

## **Regular Board of Education Meeting**

Monday, March 9, 2026 6:00 PM

Gering High School - Freshmen Academy Wing  
1500 U Street  
Gering, NE 69341



## **Minutes**

### **1. GPS Board of Education Information**

### **2. Opening Procedures**

#### 2.1. Call to Order

The meeting was called to order by Board President, Greg Trautman, at 6:00 p.m.

#### 2.2. Roll Call

#### 2.3. Pledge of Allegiance

#### 2.4. Open Meetings Act

### **3. Consent Agenda**

#### 3.1. Minutes from the previous month's board meeting(s)

#### 3.2. Approval of Claims/Bills

Fund Amount

01 General \$533,061.35

03 Employee \$209.00

05 Activity \$30,561.94

06 Nutrition \$14,992.28

08 Special Building \$231,400.00

09 Qcpuf \$1,030.00

Fund Totals: \$811,254.57

#### 3.3. Board Policy Adoption

3.3.i. First Reading of Board Policies

3.3.ii. Second Reading of Board Policies

#### 3.4. Personnel Items

3.4.i. Certified Staff Contract(s)

- 3.4.ii. Certified Staff Resignations: Denise Jensen - GMS, SPED Teacher  
Blair McDonald - GMS, Science Teacher  
Stephanie Berger - GMS, ELA Teacher

#### 4. **Celebration of Excellence**

##### 4.1. Student Athletics and Accomplishments: State Wrestling Qualifiers & Medalists:

Trell Gorsuch  
Che Molina  
Max Gardner  
Christian Murillo  
Frost Wallace  
Anthony Morales  
Rece Knight  
Gustavo Lucio  
Raleigh Dane  
Rylee Luce  
Kaydence McKee  
Meredith Zlomke  
Autumn Hahn

Jennifer Sibal presented to the board. She announced all our girls and boys wrestlers who qualified and placed at the state tournament

##### 4.2. Lincoln Elementary - Jesse Neugebauer

Jesse Neugebauer presented to the board regarding initiatives at Lincoln Elementary. He began by explaining that each year since becoming principal, he and his staff have implemented an annual theme for the school. His first year's theme was *"Lincoln Legacy,"* followed by *"Lincoln Gives."* This year, the staff wanted to do something especially meaningful and selected the theme *"Level Up Lincoln."*

Mr. Neugebauer shared that the school has demonstrated this theme in many ways, including earning an "Excellent" rating from the state, which he noted is a significant testament to the strong work being done by staff and students at Lincoln Elementary.

Mr. Neugebauer then highlighted a district elementary program housed at Lincoln Elementary called B.A.R.K.S. (Building Alternative Routes for Kids' Success).

This behavior support program replaced the previous program known as D.A.W.G.S. He explained that when the decision was made to bring the program back, it was important that it be thoughtfully redesigned and improved.

Brenda Stone, School Psychologist, explained how student placement in the program is determined. Multiple teams, including the Student Assistance Team (SAT) and Child Intervention Team (CIP), collaborate to determine whether B.A.R.K.S. is an appropriate placement for a student. These teams utilize research-based strategies and develop behavior intervention plans prior to placement. The program's goal is to help students build behavior management and academic skills within a smaller, more structured environment.

Madi Bates, B.A.R.K.S. classroom teacher, described the daily structure of the classroom. She emphasized the critical role of the paraprofessionals in supporting students and helping set a positive tone in the classroom. Ms. Bates explained that many students enter the program with missing skills, and the goal

is to help them develop those skills so they can successfully transition back to the general education classroom. Students utilize daily tracking sheets, and their progress is documented throughout the day. The program includes several phases: students enter at the **Silver** level and can progress to Gold and then Platinum. At the Gold level, students may spend part of their day in their homeroom classroom before returning to the B.A.R.K.S. classroom. At the Platinum level, students earn increased privileges and spend the majority of their day in their homeroom classroom, eventually transitioning fully out of the program.

Naomi Morales, LMHP, spoke about the importance of providing students with a strong support system. She emphasized that it is critical for students to feel valued and to know that the adults in their lives have not given up on them. Ms. Morales noted that the success of the program is the result of collaboration among many staff members working together to support both students and teachers.

## 5. Reports & Discussions

### 5.1. Board Committee Report: Curriculum & Personnel

John Maser presented to the Board. He reported that, to date, the district has received three resignations at the high school and three at the middle school, with no retirements. He also shared that the district is exploring the addition of another preschool classroom at Lincoln Elementary.

John noted that the recent Preschool and Kindergarten Expo was a great success, with 13 vendors participating and more than 150 families in attendance. He also provided an update on the High Ability Learners (HAL) program and discussed ongoing efforts to strengthen and improve the program.

Additionally, he reported that the district is in the final stages of selecting and purchasing a new science curriculum that will be used for the next seven years. The purchase is expected to come in under budget.

### 5.2. Board Committee Report: Business & Facilities

Matt Kautz presented to the Board. He reported that the district recently received a lighting presentation from Voss Lighting and noted that lighting updates will be needed throughout the district. The Board will also be voting on the purchase of a new camera system to enhance district security.

He also provided a facilities update on the auditorium project, noting that some modifications to the sound booth will be required, but overall progress is moving forward. He also reported that the district will be re-bidding for the track project, adding more flexibility to the completion timeline to encourage bids. He remains hopeful the project can be completed in time for the 2027 track season.

Finally, he gave an update regarding the middle school gym floor, which was installed improperly. The district is currently in discussions with insurance regarding replacement. He also shared that air quality testing is being conducted in the building.

### 5.3. Superintendent's Report

**Absent:** Josh Lacy, **Present:** Bryan Barrett, Matt Kautz, John Maser, Greg Trautman, Tracy Wiese.

Dear Members of the Board,

Over the past five years, I have been honored to help cultivate a district defined by connection, purpose, and a shared commitment to excellence. Together, we have worked to build a system where every classroom is a place of meaningful learning—an ecosystem in which students and staff can truly flourish.

Last week, during an 80-minute lesson in Mrs. Cline's classroom, I was reminded again of why this work matters. Her ability to spark deep thinking and genuine engagement reflects the very best of Gering Public Schools. Experiences like that have fueled my passion and affirmed the importance of the systems we have built—systems of instruction, operations, and communication that do not emerge overnight, but through steady, intentional effort.

In many ways, the challenges of leadership resemble a modern day "Midsummer Night's Dream," where communication, power, and emotion shape the complexities we navigate—from funding to access to equity. Yet our progress has always come from the same source: strong relationships and the collective belief that we can create extraordinary educational opportunities for every student.

I am profoundly grateful to the Board, my administrative team, our teachers, and our staff. Because of your dedication, the momentum we have created will continue long after my tenure. Together, we have built something that will endure.

With deep respect and appreciation, I am submitting my resignation as Superintendent effective at the conclusion of the 2026-27 school year. This decision comes with confidence that the work, the vision, and the spirit of this district will continue to flourish.

Thank you for allowing me the privilege of serving Gering Public Schools and for giving me the opportunity to show the state of Nebraska just how extraordinary this district truly is.

Sincerely,  
Nicole Regan

6. **Public Comments: 204.12**

Robert Rahmig addressed the Board and provided an FFA update.

7. **Action Items**

- 7.1. Discuss, consider, and take action to accept the resignation of Superintendent Dr. Regan, effective June 30th, 2026.
- 7.2. Discuss, consider, and take action to enter into an agreement with the Nebraska Association of School Boards (NASB) to provide professional search services in support of the district's Superintendent search process.
- 7.3. Discuss, consider, and take action to approve INAalert for installation of camera and door security system upgrades.

8. **Board Comments**

- 8.1. Tentative Upcoming Board Meeting/Event Dates

9. **Adjourn**

The meeting was adjourned at 7:03 p.m.

## Regular Board of Education Meeting

Monday, February 9, 2026 6:00 PM

Gering High School - Freshmen Academy Wing  
1500 U Street  
Gering, NE 69341



## Minutes

### 1. GPS Board of Education Information

**Absent:** John Maser, **Present:** Bryan Barrett, Matt Kautz, Josh Lacy, Greg Trautman, Tracy Wiese.

### 2. Opening Procedures

#### 2.1. Call to Order

The meeting was called to order by Board President, Greg Trautman, at 6:00 p.m.

#### 2.2. Roll Call

#### 2.3. Pledge of Allegiance

#### 2.4. Open Meetings Act

### 3. Consent Agenda

A motion to approve the Consent Agenda was presented by Tracy Wiese, seconded by Josh Lacy. After voting, motion Passed.

John Maser: Absent, Bryan Barrett: **Yea**, Matt Kautz: **Yea**, Josh Lacy: **Yea**, Greg Trautman: **Yea**, Tracy Wiese: **Yea**

#### 3.1. Minutes from the previous month's board meeting

#### 3.2. Approval of Claims/Bills

Fund Amount

01 General \$321,969.20

03 Employee \$209.00

05 Activity \$40,375.29

06 School Nutrition \$230,840.37

08 Special Building \$7,783.80

Fund Totals: \$601,177.66

#### 3.3. Board Policy Adoption

##### 3.3.i. First Reading of Board Policies

##### 3.3.ii. Second Reading of Board Policies

#### 3.4. Personnel Items

##### 3.4.i. Certified Staff Contract(s)

Jj Behrens - Activities Director

D'Angelo Murillo - Director of Maintenance

Gaby Valverde - Lincoln Elementary, R.N.

Avery Clason - GHS, ELA Teacher

## **4. Celebration of Excellence**

### **4.1. Geil Elementary - Angela Morris**

- Angela Morris presented to the Board on the district's Multi-Tiered System of Supports (MTSS). She explained that MTSS is designed to support both academic and behavioral growth for all students.
- Audrey Charbonneau, fourth-grade teacher, then shared what MTSS looks like from a classroom perspective. She described the classroom teacher's responsibility for Tier 1 instruction and for establishing clear classroom expectations. Teachers continuously assess student understanding by asking questions such as whether students comprehend the material, need additional time, require re-teaching, or would benefit from more hands-on instruction. While the goal is for 100% of students to understand the material, approximately 80% typically do so through Tier 1 instruction.
- Ms. Charbonneau explained that the remaining 20% of students receive additional support during WIN (What I Need) time. WIN time consists of data-driven interventions tailored to student needs and may also be used to pre-teach or extend content for students who are already excelling.
- Jennifer Bohnsack, Title I teacher, then presented on her role in the MTSS process. She is responsible for Tier 2 instruction and provides targeted interventions, primarily in reading and math, for students needing additional support. She also collaborates with special education teachers and paraprofessionals during WIN time.
- Matt Janecek, school counselor, presented on the next steps for students requiring further support through the Student Assistance Team (SAT) process. He explained that the team includes the classroom teacher, counselor, principal, special education teacher, and school psychologist. Mr. Janecek contacts families and works to maintain positive relationships throughout the process. The team meets every four to six weeks to review data, discuss student strengths and areas for academic improvement, and monitor progress. These data-driven meetings result in specific action plans targeting identified skill gaps.
- Ms. Morris concluded the presentation by emphasizing the importance of providing "the right support, at the right time, in the right way."

## **5. Reports & Discussions**

### **5.1. Board Committee Report: Curriculum & Personnel**

Tracy Wiese presented to the Board. She reported that there are no retirements at this time and that the district has hired an Athletic Director and a Director of Maintenance. She shared that the district has applied for a preschool grant for the upcoming school year. Enrollment is trending high for both preschool and kindergarten. She also noted that third-quarter perceptual surveys will be distributed soon to students in grades 3-12, as well as to parents and staff. Additionally, the district has received an Academic Literacy grant, which will allow teachers to enroll in a reading course to further develop instructional skills.

### **5.2. Board Committee Report: Business & Facilities**

Josh Lacy presented to the Board. He reported that demolition in the auditorium has been completed and that the HVAC units have shipped. He shared that the district has received positive feedback from the City regarding the track project. Bids for the project are due on February 12. He also noted that the middle school continues to require multiple repairs. The

district will be soliciting bids for a new camera security system, with plans to upgrade security systems across all district buildings.

#### **6. Public Comments: 204.12**

Brett Moser addressed the board on behalf of GEA and thanked the board for a smooth process.

#### **7. Action Items**

7.1. Discuss, consider, and take action regarding the GEA 2026-2028 school year negotiations.

A motion to approve the GEA 2026-2028 school year negotiations was presented by Tracy Wiese, seconded by Josh Lacy. After voting, motion Passed.

John Maser: Absent, Bryan Barrett: **Yea**, Matt Kautz: **Yea**, Josh Lacy: **Yea**, Greg Trautman: **Yea**, Tracy Wiese: **Yea**

#### **8. Board Comments**

Greg Trautman - Thanks to Geil for their presentation. We're moving in the right direction, still moving forward. We're here for students, and we have a great team at Central Office and Admin in all buildings!

Bryan Barrett - Thanks to Geil! Not all students learn the same, so it's good to see a plan in place for those that need it. Glad to see two-year negotiations passed! Leadership in buildings is strong!

Tracy Wiese - Love the momentum Gering has right now. Negotiations were a good process this year.

Josh Lacy - 2 year negotiation deal is great! Thanks to Geil! Love to see all the ins and outs of student learning. Feels confident in our future.

Matt Kautz - Thanks to Geil! Thanks to all GMS admin are doing! Leadership makes a difference.

8.1. Tentative Upcoming Board Meeting/Event Dates

#### **9. Adjourn**

The meeting was adjourned at 6:47 p.m.

## Special Board of Education Meeting

Tuesday, February 24, 2026 12:00 PM

Gering Public Schools - Central Office  
1519 10th St  
Gering, NE 69341



## Minutes

### 1. GPS Board of Education Information

**Absent:** Greg Trautman, **Present:** Bryan Barrett, Matt Kautz, Josh Lacy, John Maser, Tracy Wiese.

### 2. Opening Procedures

#### 2.1. Call to Order

The meeting was called to order by Board Vice President, Tracy Wiese, at 12:00 p.m.

#### 2.2. Roll Call

#### 2.3. Open Meetings Act

### 3. Reports and Discussions

#### 3.1. Two-Year Strategic Plan Update - Dr. Nicole Regan, Jennifer Sibal, Julie Siebke, Kory Knight, & Stacy Rodriguez

Dr. Regan and her team presented an update to the Board regarding the district's five-year strategic plan, developed in 2024 for Gering Public Schools. The plan was created through extensive collaboration with community members, staff, and students. Now two years into implementation, the district is demonstrating measurable and positive progress.

Kory Knight and Julie Siebke provided an overview of Priority #1: Academic Excellence. The district recently completed a successful accreditation visit and has strengthened its Continuous Improvement and Professional Learning Community (PLC) processes. Several schools earned Excellent and Great ratings, and the district maintains a 98% graduation rate—among the highest in the state. Academic performance has improved across multiple indicators, including ACT scores, state assessments, and SPED proficiency rates. Additionally, the district continues to expand opportunities for students through dual credit offerings and enhanced preschool programming.

Under Priority #2: Investing in Staff, the district has cultivated a strong "Grow Your Own" culture, with approximately one-third of staff members being Gering alumni. PLC time has been expanded to include all staff groups, including secretaries, paraprofessionals, and custodians. Professional development has evolved to provide more personalized learning opportunities, allowing staff to select sessions aligned with their individual needs. The district also maintains a high retention rate, with over 60% of teachers holding a master's degree.

Stacy Rodriguez addressed Priority #3: Modernizing Infrastructure and Priority #4: Operational Excellence. The district has assembled a highly skilled maintenance team representing multiple trades, reducing the need for outside contractors. A primary focus

remains ensuring the safety of students and staff through proactive facility maintenance. Ongoing projects include technology upgrades such as audio enhancements, as well as improvements to several roofs, the auditorium, and the track. Budget decisions are data-driven and transparent, with a continued emphasis on right-sizing and responsible spending.

Jennifer Sibal concluded with Priority #5: Community Engagement. The district has implemented staff forums, staff and family newsletters, bond surveys, annual reports, school day surveys, and a career advisory committee to strengthen communication and stakeholder involvement. These efforts continue to foster a strong sense of pride and engagement within the Gering community. As a district, we get better when we listen.

3.2. Strategic Priority #3: Modernizing Infrastructure, Measure of Success - Rich Evans  
Rich Evans provided an overview of the district's current camera systems across school buildings. He noted that updates are needed to enhance the safety and security of students and staff. The district is exploring a cloud-based solution that would modernize the system and potentially generate long-term cost savings.

3.3. Track Bid Update - Stacy Rodriguez  
Stacy Rodriguez provided an update on the track bidding process. The district received one bid; however, it exceeded budget expectations. As a result, the district plans to rebid the project to encourage more competitive pricing and to ensure the work is completed by a company with demonstrated experience in track installation.

#### **4. Action Items**

4.1. Discuss, consider, and take action regarding the approval of the 2026-27 and 2027-28 school calendars.

A motion to approve the 2026-27 and the 2027-28 school calendars was presented by Matt Kautz, seconded by Josh Lacy. After voting, motion Passed.

Greg Trautman: Absent, Bryan Barrett: **Yea**, Matt Kautz: **Yea**, Josh Lacy: **Yea**, John Maser: **Yea**, Tracy Wiese: **Yea**

#### **5. Public Comment: Policy 204.12**

#### **6. Adjourn**

The meeting was adjourned at 1:26 p.m.

February Check Listing

Payee Name	Amount	Fund
Cash-Wa Distributing of Kearney, Inc	\$1,133.65	1
NSAA-District VI % Troy Unzicker	\$75.00	1
Nebraska State Bandmasters Association	\$197.00	1
Menards	\$564.87	1
Menards	\$2,046.77	1
Engineered Controls, Inc.	\$5,724.00	1
City Of Gering	\$46,514.16	1
Cash-Wa Distributing of Kearney, Inc	\$2,082.95	1
Hometown Leasing	\$1,243.23	1
Mechanical Sales Parts, Inc.	\$90.78	1
Menards	\$45.90	1
Pye-Barker	\$5,458.50	1
Quadient Finance USA, Inc.	\$1,000.00	1
Tidal Wave Auto Spa	\$90.00	1
Whiting Signs Llc	\$650.00	1
Hometown Leasing	\$5,616.02	1
Eakes Office Solutions	\$1,642.43	1
Ace Hardware	\$435.55	1
Action Communications	\$115.00	1
Allo Communications	\$2,474.93	1
Benzel Pest Control	\$78.65	1
Bytes Computer & Network Solutions	\$91,789.51	1
CDW Government, LLC	\$6,702.35	1
Clemens Carpet	\$650.00	1
Column Software, PBC	\$15.27	1
Dennis Supply Company	\$644.60	1
Docu-Shred	\$105.00	1
Eakes Office Solutions	\$25,837.46	1
Emily Rose	\$33.28	1
FBG Service Corporation	\$222.00	1
Fresh Foods Inc.	\$8.00	1
Hotel 21 & Co.	\$670.00	1
Hullinger Glass & Locks, Inc.	\$756.75	1
Judith Amoo	\$350.00	1
Kiana Baldwin	\$37.70	1
Kidwell, Inc.	\$3,715.00	1
Lighthouse Electrical	\$16,298.00	1
Linweld	\$32.20	1
NASB - NE. Association of School Boards	\$500.00	1
NASB ALICAP	\$7,686.00	1

Nebraska Tire, Inc.	\$319.68	1
Northwest Pipe Fittings, Inc.	\$781.30	1
O'Reilly Auto Parts	\$84.48	1
Pearson	\$44.85	1
Platte River Glass LLC	\$351.00	1
Praise Windows, Inc.	\$180.00	1
Rebecca Chavez	\$18.85	1
SB Couny Pub Tran/Tri-City Road	\$712.00	1
School Health Corporation	\$737.84	1
SFE LLC	\$420.00	1
Sheridan Widhelm	\$73.00	1
Van Pelt Fencing	\$6,894.86	1
Winsupply Scottsbluff Ne Co	\$298.48	1
Wpci	\$1,088.00	1
YMCA	\$5,000.00	1
Retirement Plan Consultants, Llc	\$400.00	1
Menards	\$1,724.47	1
Menards	\$268.00	1
Wills Wood Craft And Co	\$2,500.00	1
New Horizons Global LLC	\$5,500.00	1
AC Electric Motor Service, LLC	\$2,790.27	1
Ace Hardware	\$597.12	1
B12 Creations	\$160.00	1
Bluffs Physical Therapy	\$8,637.38	1
Casper Winair Supply Company	\$3,786.61	1
City Of Gering	\$1,474.00	1
City of Gering - Five Rocks Amphitheater	\$300.00	1
City of Gering: LANDFILL	\$41.91	1
City of Scottsbluff	\$31.32	1
Column Software, PBC	\$129.26	1
Cornerstones of Care	\$5,180.00	1
Culligan Of Scottsbluff	\$928.50	1
Das State Accounting - Central Finance	\$317.87	1
Dennis Supply Company	\$1,208.89	1
Docu-Shred	\$175.00	1
Domino'S Pizza	\$118.99	1
Eakes Office Solutions	\$91,718.60	1
Engineered Controls, Inc.	\$4,960.00	1
ESU13	\$76,643.14	1
Fat Boys	\$225.16	1
FBG Service Corporation	\$4,452.00	1
Follett Content Solutions LLC	\$147.35	1
Fresh Foods Inc.	\$10.00	1

Gopher Sport	\$2,909.41	1
Hi Performance Car Wash	\$13.00	1
Instrumentalist Awards LLC	\$247.00	1
J.W. Pepper And Sons, Inc.	\$220.99	1
Johnson Cashway _8920	\$14.07	1
Just Right Reader Inc	\$1,685.25	1
KSB School Law	\$5,452.00	1
Linweld	\$200.26	1
McGraw Hill LLC	\$2,936.72	1
Menards	\$197.85	1
Moravek, Michael	\$190.82	1
Mosley Consulting, LLC	\$9,000.00	1
NASB - NE. Association of School Boards	\$6,771.00	1
Nebraska Library Commission	\$975.00	1
Nebraska Tire, Inc.	\$630.00	1
Northwest Pipe Fittings, Inc.	\$122.58	1
O'Reilly Auto Parts	\$694.69	1
Panhandle Power Systems LLC	\$10,500.00	1
Perry, Guthery, Haase & Gessford, P.C.,	\$6,290.00	1
PT Hose and Bearing	\$91.17	1
RAKA Rentals	\$2,655.31	1
Rotary Club of Scottsbluff/Gering	\$300.00	1
Safety-Kleen Systems, Inc.	\$464.13	1
SchoolsPLP LLC	\$2,000.00	1
Scottsbluff/Gering United Chamber Of Com	\$555.00	1
Snell Services, Inc.	\$110.00	1
Solution Tree	\$8,400.00	1
Thompson Glass, Inc.	\$600.00	1
Tree Monkeys LLC	\$1,350.00	1
Twin City Roofing & Sheet Metal, Inc.	\$1,369.60	1
University of NE at Kearney	\$30.00	1
Whiting Signs Llc	\$1,146.27	1
Winsupply Scottsbluff Ne Co	\$176.54	1
Regional Care, Inc.	\$209.00	3
Ashley Rider	\$0.00	5
Castaneda, Armond	\$130.00	5
Christopher Jackson	\$150.00	5
James S. Miller	\$316.00	5
Jeremiah Luber	\$180.00	5
Kenneth Schneider	\$333.00	5
Long, Dan	\$223.00	5
Long, Scott	\$180.00	5
Olsen, Michael	\$323.00	5

Perez, Stephanie	\$150.00	5
Salazar, Denzel E.	\$0.00	5
Tony Denke	\$401.00	5
Trevor J. Hergenreder	\$150.00	5
Van Tilburg, Alan	\$180.00	5
Castaneda, Armond	\$300.00	5
Perez, Stephanie	\$75.00	5
Castaneda, Armond	\$360.00	5
Anthony John Skalka	\$70.00	5
Ashley Newhoff	\$50.00	5
Dominic Daniel Marostica	\$135.00	5
Lily Kadolph	\$142.00	5
Linsey Smith	\$0.00	5
Mason Barrett	\$142.00	5
Megan Billie	\$75.00	5
Samuel Martindale	\$142.00	5
Timothy Lynn Milton	\$50.00	5
Poudre High School	\$300.00	5
AllTeam Sportswear	\$335.00	5
Ashley M. Keener	\$35.00	5
Ashley Strand	\$200.00	5
Awards Unlimited	\$962.91	5
Cash-Wa Distributing of Kearney, Inc	\$1,833.15	5
Domino'S Pizza	\$1,130.31	5
FloSports, Inc.	\$185.20	5
Fresh Foods Inc.	\$601.38	5
Gering Bakery-Ahlers Baking Inc.	\$113.94	5
Gordon-Rushville Public Schools	\$168.00	5
Holiday Inn Kearney	\$220.00	5
Lexington High School	\$225.00	5
Pepsi Cola Of Western Nebraska	\$3,010.60	5
Pomona High School	\$240.00	5
Scales Sales & Service LLC	\$883.75	5
SFE LLC	\$46.00	5
Sidney DECA	\$325.00	5
Two Smokin Grills	\$832.00	5
Castaneda, Armond	\$75.00	5
Perez, Stephanie	\$150.00	5
Salazar, Denzel E.	\$75.00	5
Castaneda, Armond	\$130.00	5
Perez, Stephanie	\$130.00	5
Salazar, Denzel E.	\$130.00	5
Perez, Stephanie	\$130.00	5

Salazar, Denzel E.	\$130.00	5
Fort Collins High School	\$350.00	5
Davian Palomo	\$75.00	5
Domino'S Pizza	\$416.41	5
Eakes Office Solutions	\$60.81	5
Fresh Foods Inc.	\$142.26	5
Legacy Cooperative	\$92.58	5
Logoz Llc	\$878.00	5
Pepsi Cola Of Western Nebraska	\$944.80	5
SFE LLC	\$51.00	5
Team Fitz Graphics, LLC	\$3,870.00	5
Cyrus James Frazier	\$142.00	5
Mason Barrett	\$142.00	5
Christopher Jackson	\$75.00	5
Ehler, Brock D	\$90.00	5
Lance Juelfs	\$140.00	5
Stack, Robert	\$141.00	5
Trevor J. Hergenreder	\$75.00	5
Castaneda, Armond	\$75.00	5
Christopher Jackson	\$75.00	5
Daniel J. Fox	\$75.00	5
Derek Peil	\$75.00	5
Jay Dickinson	\$210.00	5
Ryan Cheleen	\$210.00	5
Seth C, Adam	\$210.00	5
Trevor J. Hergenreder	\$75.00	5
Salazar, Denzel E.	\$75.00	5
Chadron Middle School	\$50.00	5
Domino'S Pizza	\$94.21	5
Gering Bakery-Ahlers Baking Inc.	\$132.93	5
Pepsi Cola Of Western Nebraska	\$1,178.25	5
Cash-Wa Distributing of Kearney, Inc	\$705.45	5
Bruce L. Meier	\$130.00	5
Angela C. Marquez	\$136.00	5
Audrey Worthing	\$70.00	5
Brandi J. Linders	\$105.00	5
Candise L. Johnson	\$181.00	5
Constantine P. Lapaseotes	\$105.00	5
Eben Michael Rosentrater	\$168.00	5
Jamie Sato	\$70.00	5
Jayden Gartner	\$168.00	5
Kathryn H. Fowler	\$328.00	5
Kathy Bridge	\$126.00	5

Kimberly Larson	\$70.00	5
Mason Barrett	\$70.00	5
Megan Chrisman	\$80.00	5
Melissa Pilakowski	\$216.00	5
Penny Hite	\$293.00	5
Tamika Eastman	\$80.00	5
Doug Frank	\$70.00	5
Janelle Galvan	\$105.00	5
John Coakley	\$70.00	5
Sarah Marostica	\$70.00	5
Webber, Tyler	\$70.00	5
Culligan Of Scottsbluff	\$143.00	6
Eakes Office Solutions	\$165.67	6
Gering Public Schools	\$5,074.10	6
Northwest Pipe Fittings, Inc.	\$18.62	6
Ace Hardware	\$21.59	6
Eakes Office Solutions	\$231.34	6
Menards	\$182.31	6
Winsupply Scottsbluff Ne Co	\$8,624.53	6
Ace Hardware	\$14.38	6
Culligan Of Scottsbluff	\$234.00	6
Eakes Office Solutions	\$225.59	6
O'Reilly Auto Parts	\$57.15	6
Twin City Roofing & Sheet Metal, Inc.	\$231,400.00	8
Panhandle Geotechnical & Environmental	\$1,030.00	9

**POLICY 205.2**  
**GERING PUBLIC SCHOOLS**  
**GERING, NE**

POLICY ADOPTION

The board shall give notice of proposed policy changes or adoption of new policies by placing the item on the agenda of two regular board meetings. The proposed policy changes shall be distributed and public comment will be allowed at each meeting prior to final board action. This notice procedure shall be required except for emergency situations. If the board adopts a policy in an emergency situation, a statement regarding the emergency and the need for immediate adoption of the policy shall be included in the minutes. The board shall have complete discretion to determine what constitutes an emergency situation.

The final action taken to adopt the proposed policy shall be approved by a simple majority vote of the board at the next regular meeting after the meeting allowing public discussion. The policy will be effective on the later of the date of passage or the date stated in the motion.

In the case of an emergency, a new or changed policy may be adopted by a majority vote of a quorum of the board. The emergency policy shall expire at the close of the third regular meeting following the emergency action, unless the policy adoption procedure stated above is followed and the policy is reaffirmed.

Legal Reference:           Neb. Statute 79-520 (Class III)  
                                      79-521 (Class IV)  
                                      79-522 (Class V)  
                                      79-523 (Class VI)  
                                      79-526  
                                      84-712 et seq.  
                                      NDE Rule 10.004.01A1

Cross Reference:           201.1 Board Powers and Responsibilities

**POLICY 204.12**  
**GERING PUBLIC SCHOOLS**  
**GERING, NE**

**PUBLIC PARTICIPATION IN BOARD MEETINGS**

The board recognizes the importance of citizen participation in school district matters. In order to assure citizens are heard and board meetings are conducted efficiently and in an organized manner, the board shall set time aside for citizen participation, either at a specific time during the meeting or during the discussion of agenda items. The board has the discretion to limit the amount of time set aside for public participation.

Instructions for members of the public who wish to speak:

- **Getting started:** When you have been recognized, please stand and state your name.
- **Time Limit:** Tonight the board will allow a total of 30 minutes for the presentation of ALL public comments. Individuals may speak only one time, and must limit comments to around 5 minutes. If there are more than 6 individuals who wish to address the board, the 30 minutes will be divided equally between the number of speakers. These time limits may be changed by a majority vote of the board members in attendance to extend the time for a specific item or speaker. You may only speak ONCE.
- **Personnel or Student Topic:** If you are planning to speak about a personnel or student matter involving an individual, please understand that our policies may require you to follow the district's complaint procedure before addressing the board. Board members will generally not respond to any questions you ask or comments you make about individual staff members or students. Please remember that slanderous comments will not be tolerated.
- **General Rules:** This is a public meeting for the conduct of business. Comments from within the audience while others are speaking will not be tolerated. Lewd, obscene, profane, slanderous, threatening and hostile conduct or statements and fighting words (words whose mere utterance entails a call to violence) will not be tolerated.
- **No action by the Board:** The board will not act on any matter which is not on the agenda and will not take action upon the conclusion of public comment.

If the pressure of business or other circumstances dictate, the board president may decide to eliminate this practice at a particular meeting. The board president will recognize these individuals to make their comments at the appropriate time. The orderly process of the board meeting shall not be interfered with or disrupted. Only those speakers recognized by the board president shall be allowed to speak. Comments by others are out of order. If disruptive, the individual making the comments or another individual causing disruption may be asked to leave the board meeting.

Citizens wishing to address the board on a certain agenda item must notify the superintendent prior to the board meeting. Citizens wishing to present petitions to the board may do so at this time. However, the board will only receive the petitions and not act upon them or their contents.

Subjects for comment should involve areas within the board's proper responsibility. Discussion on unrelated matters is to be discouraged.

Individuals who have a complaint about employees may bring their complaint to the board only after they have followed board policy addressing citizens' complaints. Students who have a complaint may only bring their complaint to the board after they have followed board policy addressing students' complaints.

Any written or printed materials to be circulated for a meeting of the school board must be submitted to the superintendent by the Wednesday preceding a Monday night meeting.

This material will be transmitted to the members of the board for their consideration.

Legal Reference: Nebraska Statute 84-1408 to 1414

Cross Reference: 201.7 School Board Liability  
204.3 Public Hearings  
204.10 Agenda  
403.5 Public Complaints about Employees

Approved 01/20/2003

Reviewed 02/23/2015, 10/14/2021 6/9/22

Revised 09/14/2009, 7/20/22

**INA**

*Software & Camera Solutions*



**INA Alert Inc Proposal  
For  
Gering Public Schools  
RFP Cloud-Hosted Video  
& Access Control Upgrade**



*Software & Camera Solutions*

## Table of Contents

Company Information .....	3
Company History.....	3
EXHIBIT "A": NOTICE OF INTENTION .....	4
EXHIBIT "B": INSURANCE .....	5
System Architecture .....	6
Project Methodology .....	7
Post Installation Support.....	8
System Training .....	8
Project Pricing .....	9
Product Documentation.....	10



*Software & Camera Solutions*

## Company Information

**Name:** INA Alert Inc.

**Address:** 112 N Main St  
Ellinwood, KS 67526

**Business:** Woman-Owned S-Corporation

**Contact:** Jordon Smith, VP of Sales Engineering  
112 N Main St Ellinwood, KS 67526  
P: 620-564-3766  
C: 254-315-7377  
[Jordon@inaalert.com](mailto:Jordon@inaalert.com)

## Company History

INA Alert, Inc. is a Woman-Owned Business founded in April 2011. The company began as a technology-based communications platform serving healthcare and education, developing safety and messaging systems through direct collaboration with its clients.

In 2013, INA Alert expanded into security system integration to meet the growing demand for professional video surveillance and access control solutions in west-central Kansas. The company began deploying systems from Avigilon, now part of Motorola Solutions, and steadily grew into a trusted regional partner for enterprise-grade security technologies.

Today, INA Alert employs 65 full-time professionals, including certified technicians, system designers, project managers, and dedicated support staff. The company serves clients throughout Kansas and neighboring states, providing long-term partnership, responsive service, and scalable security solutions for education, municipal, healthcare, and commercial environments.

Our business office can be reached at (620) 564-3766 Monday-Friday 8:00am-5:00pm and our Support Team is available 24/7 at 620-566-3050 \*1 or [Support@inaalert.com](mailto:Support@inaalert.com).

## EXHIBIT "A": NOTICE OF INTENTION

RFP Cloud-Hosted Video & Access Control System Upgrade

Gering Public Schools

Installer/Systems Integrator/Partner's Name: INA Alert Inc.

Authorized Representative: Jordon Smith

Telephone Number: 620-566-3050

E-Mail: Jordon@inaalert.com

Please state your intention regarding the Request for Proposal 'RFP Cloud-Hosted Access Control System Upgrade issued by Gering Public Schools' by selecting one of the following:

- Intends to respond to Gering Public School's Request for Proposal.
- Does not intend to respond to Gering Public School's Request for Proposal.



# CERTIFICATE OF LIABILITY INSURANCE

DATE (MM/DD/YYYY)

2/12/2026

THIS CERTIFICATE IS ISSUED AS A MATTER OF INFORMATION ONLY AND CONFERS NO RIGHTS UPON THE CERTIFICATE HOLDER. THIS CERTIFICATE DOES NOT AFFIRMATIVELY OR NEGATIVELY AMEND, EXTEND OR ALTER THE COVERAGE AFFORDED BY THE POLICIES BELOW. THIS CERTIFICATE OF INSURANCE DOES NOT CONSTITUTE A CONTRACT BETWEEN THE ISSUING INSURER(S), AUTHORIZED REPRESENTATIVE OR PRODUCER, AND THE CERTIFICATE HOLDER.

**IMPORTANT:** If the certificate holder is an ADDITIONAL INSURED, the policy(ies) must have ADDITIONAL INSURED provisions or be endorsed. If SUBROGATION IS WAIVED, subject to the terms and conditions of the policy, certain policies may require an endorsement. A statement on this certificate does not confer rights to the certificate holder in lieu of such endorsement(s).

<b>PRODUCER</b> IMA, Inc. - Wichita PO Box 2992 Wichita KS 67201	<b>CONTACT NAME:</b> IMA Certs Team	
	<b>PHONE (A/C, No. Ext):</b>	<b>FAX (A/C, No):</b>
<b>E-MAIL ADDRESS:</b> certificates@imacorp.com		
<b>INSURER(S) AFFORDING COVERAGE</b>		<b>NAIC #</b>
License#: PC-1210733 INAAINC-01	<b>INSURER A:</b> Philadelphia Indemnity Insurance Company	18058
<b>INSURED</b> INAAAlert, Inc. PO Box 96 Ellinwood KS 67526	<b>INSURER B:</b> Travelers Casualty Company of Connecticut	36170
	<b>INSURER C:</b>	
	<b>INSURER D:</b>	
	<b>INSURER E:</b>	
<b>INSURER F:</b>		

**COVERAGES**

CERTIFICATE NUMBER: 1012133742

REVISION NUMBER:

THIS IS TO CERTIFY THAT THE POLICIES OF INSURANCE LISTED BELOW HAVE BEEN ISSUED TO THE INSURED NAMED ABOVE FOR THE POLICY PERIOD INDICATED. NOTWITHSTANDING ANY REQUIREMENT, TERM OR CONDITION OF ANY CONTRACT OR OTHER DOCUMENT WITH RESPECT TO WHICH THIS CERTIFICATE MAY BE ISSUED OR MAY PERTAIN, THE INSURANCE AFFORDED BY THE POLICIES DESCRIBED HEREIN IS SUBJECT TO ALL THE TERMS, EXCLUSIONS AND CONDITIONS OF SUCH POLICIES. LIMITS SHOWN MAY HAVE BEEN REDUCED BY PAID CLAIMS.

INSR LTR	TYPE OF INSURANCE	ADDL INSD	SUBR WVD	POLICY NUMBER	POLICY EFF (MM/DD/YYYY)	POLICY EXP (MM/DD/YYYY)	LIMITS	
A	<input checked="" type="checkbox"/> COMMERCIAL GENERAL LIABILITY <input type="checkbox"/> CLAIMS-MADE <input checked="" type="checkbox"/> OCCUR GEN'L AGGREGATE LIMIT APPLIES PER: <input type="checkbox"/> POLICY <input checked="" type="checkbox"/> PRO-JECT <input type="checkbox"/> LOC OTHER:			PHPK2611984-005	10/5/2025	10/5/2026	EACH OCCURRENCE	\$ 1,000,000
							DAMAGE TO RENTED PREMISES (Ea occurrence)	\$ 1,000,000
							MED EXP (Any one person)	\$ 20,000
							PERSONAL & ADV INJURY	\$ 1,000,000
							GENERAL AGGREGATE	\$ 2,000,000
							PRODUCTS - COMP/OP AGG	\$ 2,000,000
								\$
A	<b>AUTOMOBILE LIABILITY</b> <input type="checkbox"/> ANY AUTO <input checked="" type="checkbox"/> OWNED AUTOS ONLY <input type="checkbox"/> SCHEDULED AUTOS <input checked="" type="checkbox"/> HIRED AUTOS ONLY <input checked="" type="checkbox"/> NON-OWNED AUTOS ONLY			PHPK2611984-005	10/5/2025	10/5/2026	COMBINED SINGLE LIMIT (Ea accident)	\$ 1,000,000
							BODILY INJURY (Per person)	\$
							BODILY INJURY (Per accident)	\$
							PROPERTY DAMAGE (Per accident)	\$
								\$
A	<input checked="" type="checkbox"/> UMBRELLA LIAB <input checked="" type="checkbox"/> OCCUR <input type="checkbox"/> EXCESS LIAB <input type="checkbox"/> CLAIMS-MADE <input type="checkbox"/> DED <input checked="" type="checkbox"/> RETENTION \$ 10,000			PHUB884979-005	10/5/2025	10/5/2026	EACH OCCURRENCE	\$ 2,000,000
							AGGREGATE	\$ 2,000,000
								\$
B	<b>WORKERS COMPENSATION AND EMPLOYERS' LIABILITY</b> ANY PROPRIETOR/PARTNER/EXECUTIVE OFFICER/MEMBER EXCLUDED? (Mandatory in NH) If yes, describe under DESCRIPTION OF OPERATIONS below	Y/N		UBC0070897	10/5/2025	10/5/2026	<input checked="" type="checkbox"/> PER STATUTE <input type="checkbox"/> OTHER	
		Y	N/A				E.L. EACH ACCIDENT	\$ 1,000,000
							E.L. DISEASE - EA EMPLOYEE	\$ 1,000,000
							E.L. DISEASE - POLICY LIMIT	\$ 1,000,000
A	Technology Errors & Omissions			PHPK2611984-005	10/5/2025	10/5/2026	Limit Retention Claims Made	\$1,000,000 \$10,000 Retro Date 10/5/20

DESCRIPTION OF OPERATIONS / LOCATIONS / VEHICLES (ACORD 101, Additional Remarks Schedule, may be attached if more space is required)

Workers Compensation Information: Proprietors/Partners/Executive Officers/Members Excluded: subject to the policy terms and conditions.

**CERTIFICATE HOLDER****CANCELLATION**

Gering Public Schools  
 1519 10th St  
 Gering NE 69341

SHOULD ANY OF THE ABOVE DESCRIBED POLICIES BE CANCELLED BEFORE THE EXPIRATION DATE THEREOF, NOTICE WILL BE DELIVERED IN ACCORDANCE WITH THE POLICY PROVISIONS.

AUTHORIZED REPRESENTATIVE

© 1988-2015 ACORD CORPORATION. All rights reserved.



*Software & Camera Solutions*

## **System Architecture**

We have utilized the Avigilon Alta line of products to implement security solutions across multiple buildings for Gering Public Schools. This includes surveillance, access control, and smart sensor applications. All systems are connected and unified through the Alta cloud-hosted platform under a five-year licensing structure.

### **System Architecture**

The proposed system architecture is designed as a fully cloud-managed, unified ecosystem leveraging Avigilon Alta Video and Alta Access. The architecture eliminates the need for traditional on-premise VMS servers and instead utilizes secure cloud infrastructure for centralized management, configuration, monitoring, and data retention.

Key architectural components include:

- **Cloud-Hosted Management Layer:**  
All video, access control, and smart sensor data is managed through the Alta cloud environment, providing centralized administration, role-based permissions, audit trails, and multi-site visibility across all district facilities.
- **Edge Devices & Smart Hardware:**  
Cameras, smart readers, intercoms, and door controllers operate as intelligent edge devices. These devices communicate securely with the cloud using encrypted TLS protocols, ensuring secure transmission of video streams, access events, and system health data.
- **Unified Video + Access Integration:**  
Access control events are natively linked with corresponding video footage, enabling door-based video verification, event-triggered recordings, and rapid incident investigation from a single interface.
- **Scalable Multi-Building Deployment:**  
The architecture supports expansion without system redesign. Additional cameras, doors, or facilities can be added within the existing cloud framework while maintaining unified administration.
- **Cybersecurity & Redundancy:**  
The cloud-first design reduces local infrastructure risk, provides automatic firmware and software updates, and maintains encrypted communications between all endpoints and the Alta platform.

This architecture ensures long-term scalability, simplified management, reduced on-premise infrastructure requirements, and a cohesive “single pane of glass” experience for administrators and operators.



*Software & Camera Solutions*

## **Project Methodology**

Upon acceptance of this proposal, INA Alert, Inc. will assign a dedicated Project Manager to oversee all phases of the project. The Project Manager will initiate communication with the designated Project Point of Contact (POC) to confirm stakeholders and establish a clear communication structure for the duration of the project.

Once stakeholders are confirmed, the Project Manager will coordinate with INA Alert's Ordering Department to initiate equipment procurement. The Ordering Department will provide updates regarding equipment lead times and delivery schedules. Upon confirmation of delivery dates, the Project Manager will work with the customer to establish an installation schedule.

Throughout this process, the Project Manager will coordinate with onsite stakeholders to ensure a smooth transition from any existing systems and address any project-specific customizations or operational requirements prior to installation.

Prior to deployment, the Installation Department will pre-configure system hardware to streamline field implementation. During installation, the Project Manager and Lead Technicians will confirm final device locations in coordination with the customer, including verification of camera fields of view and recording parameters.

Following installation, INA Alert will conduct comprehensive administrator and operator training with all designated stakeholders. Final adjustments to camera views, recording settings, and system configurations will be completed at that time.

At the conclusion of the installation phase, the project will be formally transitioned to INA Alert's Support Department to ensure ongoing service and system performance.



*Software & Camera Solutions*

## **Post Installation Support**

INA Alert provides comprehensive post-installation support, ongoing maintenance, and structured training to ensure long-term system performance and operational continuity.

Our dedicated Support Department provides a 12-hour emergency remote response for critical system-impacting issues. This includes remote diagnostics, troubleshooting, and coordination of onsite service when required. Non-emergency service requests receive a response within 24 hours and may include configuration adjustments, user updates, reporting modifications, credential management, or other operational refinements. All service activities are documented and tracked to ensure transparency and accountability.

Firmware and software updates are included as part of our service commitment to maintain system security, stability, and compatibility. Updates are coordinated to minimize disruption while ensuring the platform remains aligned with manufacturer's best practices and evolving cybersecurity standards.

Any service required on-site outside of the applicable manufacturer warranty will be subject to standard service rates. If the project is financed, INA Alert will provide a reduced service rate of ten percent (10%) off standard labor rates for non-warranty service work for the duration of the financing term.

## **System Training**

INA Alert provides structured, role-based training to ensure administrators and operators are fully prepared to manage and utilize the system effectively. Training sessions are conducted onsite or virtually, depending on client preference, and are tailored to the responsibilities of each user group.

Administrator training includes system configuration, user and role management, credential issuance and revocation, schedule configuration, reporting tools, audit logs, video search and export procedures, and incident response workflows. Operator-level training focuses on daily system use, monitoring, event review, video verification of access events, lockdown procedures, and proper documentation of incidents.

All virtual training sessions are recorded and can be provided to the customer for future reference and onboarding of new personnel. In addition, INA Alert supplies detailed PDF documentation, quick-reference guides, and manufacturer manuals to support continued learning and internal training efforts. Follow-up training or refresher sessions can also be scheduled as operational needs evolve.



Software & Camera Solutions

### Project Pricing

2/20/2026

**Security Upgrade Overview**

Quote #	Building	Project	Total
12306-26	Gering HS	Surveillance Project - Alta Video	\$ 166,559.87
12307-26	Gering HS	Access Control Project - Alta Access	\$ 135,994.75
12308-26	Northfield Elementary	Surveillance Project - Alta Video	\$ 64,667.06
12309-26	Northfield Elementary	Access Control Project - Alta Access	\$ 68,413.15
12310-26	Geil Elementary	Surveillance Project - Alta Video	\$ 59,433.16
12311-26	Geil Elementary	Access Control Project - Alta Access	\$ 64,668.19
12312-26	Lincoln Elementary	Surveillance Project - Alta Video	\$ 66,226.73
12313-26	Lincoln Elementary	Access Control Project - Alta Access	\$ 97,740.10
12314-26	Tech-Maintenance	Surveillance Project - Alta Video	\$ 16,383.24
12315-26	Tech-Maintenance	Access Control Project - Alta Access	\$ 23,232.16
11583-25	Gering HS	Panic/Intrusion Project - Alta Protect	\$ 196,162.30
12380-26	Gering District Office	Surveillance Project - Alta Video	\$ 8,189.01
12381-26	Gering District Office	Access Control Project - Alta Access	\$ 13,176.25

Quotation Prepared By:



Sales@INAalert.com  
620.566.3050  
Quotation and Pricing Valid for 30 Days.  
Not Valid After 3/22/2026

Currency: USD

Subtotal	\$ 980,845.97
Shipping & Handling	
Sales Tax %	
<b>Total</b>	<b>\$ 980,845.97</b>

#### Payment Options

One-Time Payment \$ 980,845.97

or 5 - Year Payment Plan

Please Indicate: Accept:  Decline:  \$ 225,000.00

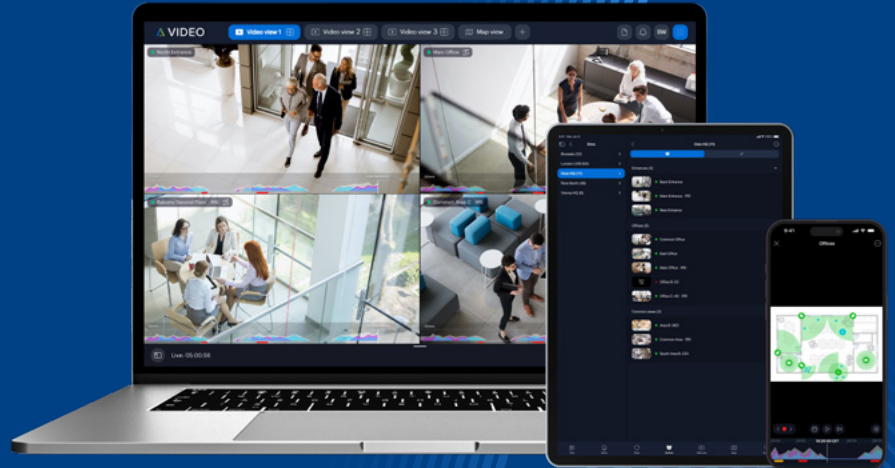
Gering Public Schools Representative

Printed Name: \_\_\_\_\_ Signature: \_\_\_\_\_ Date: \_\_\_\_\_

INA Alert Representative:

Printed Name: Jordon Smith Signature: Jordon Smith Date: 2/20/2026

# Alta Video



Actionable intelligence made easy

Agile, scalable and easy to use, Alta Video is a cloud-based VMS with machine learning capabilities. It analyzes real-time video from Avigilon Alta and third-party cameras, sending instant alerts on unusual activity to keep your team informed.



## Access anywhere

A cloud-native AI video management system offers an open, scalable platform that alerts you to critical events across cameras and locations, securely managed via browser or mobile app.



## Gain real-time location insights

Improve situational awareness with real-time insight into people and vehicle activity and counts across your locations, visualized on maps and floor plans to easily see what's happening.



## Stay informed with smart alerts

Equipped with a powerful rules engine to help keep your security teams informed. Quickly set up rules to receive real-time alerts with thumbnails, time and location data.



## See what matters

Spotlight uses deep learning to surface relevant video feeds and help keep operators informed of potential events. Real-time alerts on the video walls make it a snap to get the full picture.



## Review events with precision

Use the timeline to quickly find specific events in Alta Video's AI-powered video view that highlights people, vehicles and overall motion separately and in different colors.



## Conduct fast investigations

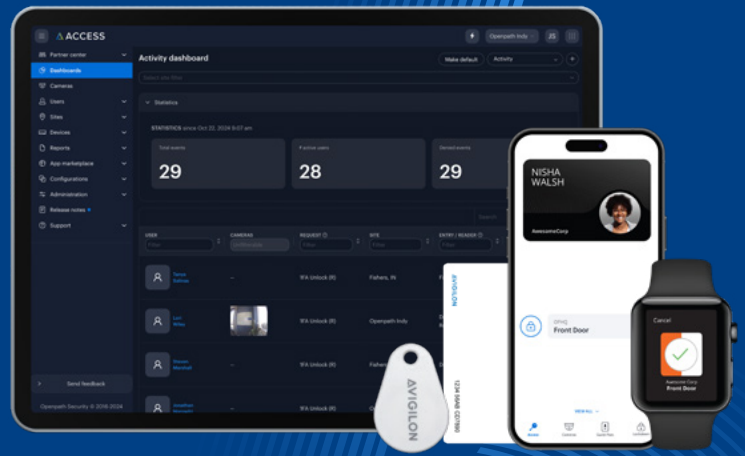
Comb through countless hours of video quickly using appearance and image detection – all powered by machine learning. Easily search across multiple cameras and days with a single click.

To learn more, visit [avigilon.com/vms/cloud](https://www.avigilon.com/vms/cloud)



Fact Sheet

# Alta Access



## Future-ready access control in the cloud

Better security starts at the door. Gain complete control and visibility over who enters your spaces with Avigilon Alta cloud-native access control. Assign mobile keys and guest passes, integrate with business tools and manage multiple sites from a unified web dashboard or mobile device.



### Built to scale

Add new sites, buildings and doors in a few clicks. Leverage seamless identity provider integrations, like SCIM for Okta to sync permissions across unlimited users, groups and roles in real time.



### Flexible ways in

Choose from encrypted DESFire keycards and mobile badges, or hands-free License Plate Credentials and Wave to Unlock. Easily send mobile guest passes, and see who's at the door with a Video Intercom Reader.



### Unified management

Set up custom dashboards, alerts and view live video and sensor data across Alta Video and Intrusion from a single pane of glass. Schedule and export reports with granular filtering to find what you need quickly.



### Keeps working offline

Maintain uninterrupted operations in the event of an Internet outage. Local storage preserves configurations and logged events for up to 60 days, syncing back to the cloud once the connection is restored.



### Secure by default

Our core architecture keeps data safe with advanced encryption and tamper-resistant hardware. Security updates are automatically installed with the latest protocols to stay ahead of evolving threats.



### Open and integrated

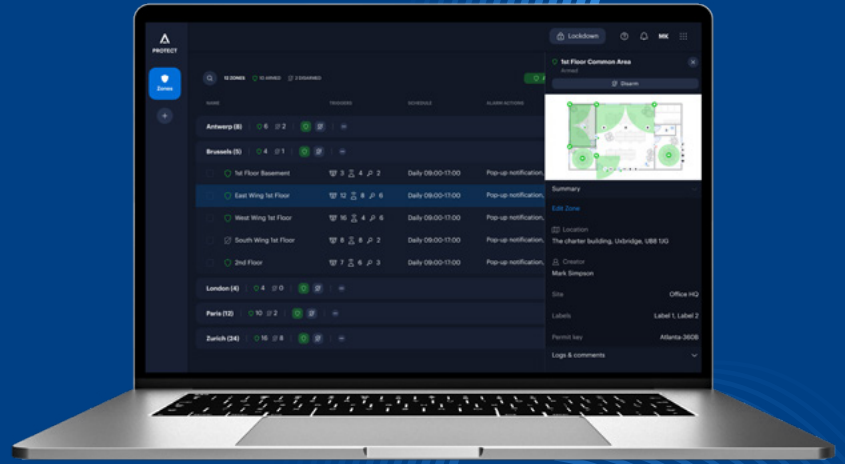
Build custom solutions using an Open API, or choose from 100+ apps to download in seconds. Leverage Mercury controllers and HID hardware for seamless hybrid and cloud deployment options.

To learn more, visit [avigilon.com/alta-access](https://www.avigilon.com/alta-access)



# Alta Protect

Modern, cloud-native site protection system



Protect what matters most with intelligent, real-time threat detection. Alta Protect is a modern, AI-powered site protection system combining video and audio analytics, sensor data and a powerful Rules engine to swiftly detect, deter and respond to suspicious activity.



## Securely manage from anywhere

Alta Protect's remote monitoring and management capabilities provide real-time access and control from anywhere, keeping your premises secure and allowing instant responses to threats.



## Intelligent alert triggers

Leverage cameras, access control points and sensors as triggers to detect real threats with precision, minimizing false alarms and improving response times to help keep your property safe.



## Powerful AI analytics

Utilize Alta Video's AI engine to detect people and other suspicious activity. Add audio analytics to get instant alerts on glass breaking, gunshots and other loud noises.



## Seamless integrations

All of the integration mechanisms for Alta Video also work for Alta Protect. Connect sensors, access control points and even ONVIF compliant cameras to trigger alarms.



## Customizable zones and rules

Easily create and modify zones, triggers and schedules and tie them to our powerful Rules engine that automatically sends alerts to the site contact or monitoring service.



## Video validated alerts

Get the full picture with video validated alerts. Use our Remote Monitoring Service or your own to verify alarms and decide whether to dispatch.

For more information, visit [avigilon.com/alta-protect](https://avigilon.com/alta-protect)



Bid For: Gering Public Schools - High School  
 POC: Richard Evans



PO BOX 96  
 112 N Main  
 Ellinwood, KS 67526

2/16/2026 Quote #12306-26

Cameras & Accessories				
QTY	MODEL NAME	DESCRIPTION	UNIT COST	LINE TOTAL
14	20C-H5A-4MH-30	5MP 4 head H5A Multisensor Camera; Alta 30 Day	\$ 2,006.43	\$ 28,090.02
6	H5AMH-AD-PEND1	Outdoor pendant mount adapter. For use with the Avigilon H5A Multisensor	\$ 149.46	\$ 896.76
10	H5AMH-DO-COVR1	Dome bubble and cover, for outdoor surface mount or pendant mount, clear. For use with the Avigilon H5A Multisensor	\$ 149.46	\$ 1,494.60
2	WLMT-1001	Wall Mount For Large Pendant Camera	\$ 90.99	\$ 181.98
2	H4AMH-AD-IRIL1	IR illuminator ring, up to 30m (100ft), for use with H4AMH-DO-COVR1.	\$ 292.05	\$ 584.10
2	CRNMT-1001	Corner Mount For Large Pendant Wall Mount WLMT-1001	\$ 108.75	\$ 217.50
4	H5AMH-AD-DOME1	Outdoor surface mount adapter. For use with the Avigilon H5A Multisensor	\$ 149.46	\$ 597.84
4	NPTA-1001	1.5 Inch NPT Adapter For Large Pendant Mount Camera	\$ 49.25	\$ 197.00
14	POE90U-1BT	PoE injector 802.3bt 90W Single Port	\$ 285.69	\$ 3,999.66
40	5.0C-H6M-D1-IR-30	5MP, 30 Day, Alta, WDR, Day/Night Indoor Minidome, 2.95mm f/2.0, integrated IR, up to 10 year warranty with an active Alta Video license	\$ 427.86	\$ 17,114.40
9	H6M-MT-NPTA1	Pendant mount for H6M dome cameras	\$ 23.17	\$ 208.53
4	10.0C-H6ADH-DO1-IR-30	2x 5MP H6A Dual Head Camera. Outdoor camera with built-in IR; Alta 30 Day	\$ 1,427.86	\$ 5,711.44
4	NPTA-1201	1.5 inch NPT Adapter for Dual Head Cameras	\$ 52.50	\$ 210.00
1	5.0C-H6SL-D1-IR-30	5MP H6SL Indoor IR Dome Camera with 3.4-10.5mm lens; Alta 30 Day	\$ 706.43	\$ 706.43
16	5.0C-H6SL-BO1-IR-30	5MP H6SL Outdoor IR Bullet Camera with 3.4-10.5mm lens; Alta 30 Day	\$ 935.00	\$ 14,960.00
9	360-W-30	Ava 360 White - 12MP - 30 days	\$ 999.29	\$ 8,993.61

Storage & Software				
QTY	MODEL NAME	DESCRIPTION	UNIT COST	LINE TOTAL
84	AWA-CLD-5Y	Alta Aware License 5 years	\$ 649.00	\$ 54,516.00

Custom Line Items				
QTY	MODEL NAME	DESCRIPTION	UNIT COST	LINE TOTAL
1	Installation	Hardware Installation & Software Configuration	\$ 24,130.00	\$ 24,130.00
1	Miscellaneous	Misc: Connectors, Mounting Brackets, Clips, Etc	\$ 3,750.00	\$ 3,750.00

Scope Of Work:

Included in this proposal is the necessary hardware and software to deploy the Avigilon Alta cloud-based video surveillance system at Gering High School. This system will include the replacement of existing IP cameras with new Avigilon Alta cloud-connected IP cameras to provide full coverage of entrances, corridors, and exterior areas. Each camera will be configured to record to the Alta Aware cloud platform with AI-driven analytics such as motion search, vehicle and person detection, and real-time alerts for safety events. Local and remote viewing will be available to authorized district and law enforcement personnel. A design map outlining proposed camera locations and viewing angles will be finalized with the district prior to installation. Any modifications to the scope of work may result in an adjustment to the final project cost.

**Quotation Prepared By:**



Sales@INAalert.com

620.566.3050

Quotation and Pricing Valid for 30 Days.

Not Valid After 3/18/2026

Project Designed By: Jordon Smith

**Initial:** \_\_\_\_\_

Currency: USD

Subtotal	\$ 166,559.87
Shipping & Handling	
Sales Tax %	
<b>Total</b>	<b>\$ 166,559.87</b>

**Payment Options**

One-Time Payment	\$ 166,559.87
or 5 - Year Payment Plan	
Please Indicate: <input type="checkbox"/> Accept: <input type="checkbox"/> Decline: <input type="checkbox"/>	\$ 41,222.42

To accept this quotation, sign here and return:

Approved By: \_\_\_\_\_

Approval Date: \_\_\_\_\_

INA Alert, Inc.  
Representative: \_\_\_\_\_

Approval Date: \_\_\_\_\_

**This quote is subject to the following conditions & parameters:**

- 1) This is a quote setting out the proposed price at which INA Alert is prepared to supply the products and services described herein. It is not intended to create a legally binding contract.
- 2) Price may include an approximation of local sales tax. Actual taxes and duties may be different than the estimate referenced herein.
- 3) Price may include an approximation of shipping charges. Actual shipping charges may be different than the estimate referenced herein.
- 4) Upon acceptance of monthly payment terms, customer will be provided ACH payment sheet to be filled out and returned to INA Alert. Monthly payments will begin on the first Monday of each month following the acceptance of the quote.
- 5) Upon acceptance of this quote, the project is subject to progress billing based on equipment and service(s) delivered to the customer.
- 6) The owner accepts all responsibility for installing equipment that is quoted to be shipped directly to the facility without installation. If INA Alert technician must be scheduled to come on-site, normal billing rates will be applied.
- 7) INA Alert assumes all existing equipment is in working order. Additional costs will apply if any existing equipment needs to be replaced.
- 8) INA Alert assumes the internet and phone lines necessary for new equipment has been installed and is in functional condition. If this is not the case, additional costs and install time may apply.
- 9) 50% of proposal due upon approval, remaining balance due upon completion\*. (Sales Tax added to final invoice if applicable)
- 10) \*If project is extended past one month from start date, then progress beyond 50% will be billed monthly on the 20th of the month until completion. Remain balance will be due upon completion.
- 11) In the event that the job requires the use of a lift, the responsibility is placed upon the customer to cover the financial costs associated with the rental of the lift equipment.

- 12) Accounts not paid in full within 30 days of the billing date on the final or monthly invoice will incur a 3% service charge, calculated on the outstanding balance before applying current payments or credits shown on the monthly statement.

Bid For: Gering Public Schools  
 POC: Richard Evans - revans@geringschools.net  
 1500 U St, Gering, NE 69341



Technology Products and Service

PO BOX 96  
 112 N Main  
 Ellinwood, KS 67526

2/16/2026 Quote #12307-26

Access Control Hardware				
QTY	MODEL NAME	DESCRIPTION	UNIT COST	LINE TOTAL
2	SYS-8ENT-DVE4	Core Series 8 port 12/24V Smart Hub, 8 entry capacity Power supply: FPO series, E4 enclosure	\$ 2,604.17	\$ 5,208.34
1	SYS-4ENT-DVE1	Core Series 4 port 12/24V Smart Hub, 4 entry capacity Power supply: FPV series, E1 enclosure	\$ 1,483.33	\$ 1,483.33
19	OP-R2X-MULL	Mullion Smart Reader V2, black, low and high frequency version	\$ 229.17	\$ 4,354.23
1	OP-VID-PRO-INT	The Openpath Video Intercom Reader Pro combines a built-in high resolution camera, intelligent intercom, and multi-technology reader into a slim and sleek form factor	\$ 833.33	\$ 833.33
15	AC-ALTA-SCH-ENGAGE-GWE	Allegion Gateway - For online locks. Supports up to (10) Engage series locks within 30' of gateway.	\$ 605.92	\$ 9,088.80
46	AC-ALTA-SCH-LE-CUSTOM	The Schlage® LE wireless mortise lock is designed to affordably extend electronic access control deeper into the building beyond traditional perimeter and high security openings.	\$ 1,361.47	\$ 62,627.62
4	HES 8000C	HES 8000C Electric Strike	\$ 189.15	\$ 756.60
1	AES-30024KIT	AES-300 - All Jamb Types - Strike body and all faceplate options	\$ 173.46	\$ 173.46
5	8080-TWG-W	Door Position Sensor, White	\$ 8.28	\$ 41.40

Access Control Credentials				
QTY	MODEL NAME	DESCRIPTION	UNIT COST	LINE TOTAL
4	OP-ACH-EV3P10	Punched DESFire EV3-B Access Card, use with high frequency readers, pack of 10	\$ 50.00	\$ 200.00

Storage & Software				
QTY	MODEL NAME	DESCRIPTION	UNIT COST	LINE TOTAL
10	SW-ALLE-OPP5-5Y	Allegion Wireless locks purchased through Openpath (5 Years)	\$ 1,000.00	\$ 10,000.00
1	SW-INTC-PRM-5Y	(License V2) Intercom Device License - Premium (5 Years)	\$ 1,500.00	\$ 1,500.00
1	SW-PRM-P10-5Y	Premium: Pack of 10 entries (5 Years)	\$ 7,500.00	\$ 7,500.00
1	SW-PRM-P5-5Y	Premium: Pack of 5 entries (5 Years)	\$ 4,500.00	\$ 4,500.00
1	SW-PRM-P1-5Y	Premium: Pack of 1 entry (5 Years)	\$ 1,250.00	\$ 1,250.00

Custom Line Items				
QTY	MODEL NAME	DESCRIPTION	UNIT COST	LINE TOTAL
1000	Access Control Cable	All in One Access Control Cable	\$ 1.05	\$ 1,050.00
3000	Indoor Cable	Cat6 Blue Indoor Cable #77-240-2A	\$ 0.43	\$ 1,290.00
4	SLA127	12V Sealed Battery for LSP Box	\$ 26.91	\$ 107.64
1	Installation	Hardware Installation & Software Configuration	\$ 21,280.00	\$ 21,280.00
1	Miscellaneous	Misc: Connectors, Mounting Brackets, Clips, Etc	\$ 2,750.00	\$ 2,750.00

**Scope Of Work:**

Included in this proposal is the necessary hardware, software, and labor to provide Avigilon Alta Access Control at the High School. This scope includes the takeover of existing access control equipment and the installation of new wired and wireless access-controlled doors as outlined below.

**High School**

**Existing Wired Doors: 13**  
**New Wired Doors: 4**  
**New Wireless Doors: 46**

INA Alert technicians will perform installation, configuration, and system commissioning to ensure proper operation and full integration with the Avigilon Alta Access platform. Any changes to the scope of work may result in an adjustment to the final project price.

**Quotation Prepared By:**



**Sales@INAalert.com**  
**620.566.3050**

Quotation and Pricing Valid for 30 Days.

Not Valid After 3/18/2026

Project Designed By: Jordon Smith

**Initial:** \_\_\_\_\_

Currency: USD

<b>Subtotal</b>	<b>\$ 135,994.75</b>
<b>Shipping &amp; Handling</b>	_____
<b>Sales Tax %</b>	_____
<b>Total</b>	<b>\$ 135,994.75</b>

**Payment Options**

**One-Time Payment \$ 135,994.75**

**or 5 - Year Payment Plan**

**Please Indicate: Accept:  Decline:  \$ 33,657.76**

To accept this quotation, sign here and return:

Approved By: \_\_\_\_\_

Approval Date: \_\_\_\_\_

INA Alert, Inc.  
Representative: \_\_\_\_\_

Approval Date: \_\_\_\_\_

**This quote is subject to the following conditions & parameters:**

- 1) This is a quote setting out the proposed price at which INA Alert is prepared to supply the products and services described herein. It is not intended to create a legally binding contract.
- 2) Price may include an approximation of local sales tax. Actual taxes and duties may be different than the estimate referenced herein.
- 3) Price may include an approximation of shipping charges. Actual shipping charges may be different than the estimate referenced herein.
- 4) Upon acceptance of monthly payment terms, customer will be provided ACH payment sheet to be filled out and returned to INA Alert. Monthly payments will begin on the first Monday of each month following the acceptance of the quote.
- 5) Upon acceptance of this quote, the project is subject to progress billing based on equipment and service(s) delivered to the customer.
- 6) The owner accepts all responsibility for installing equipment that is quoted to be shipped directly to the facility without installation. If INA Alert technician must be scheduled to come on-site, normal billing rates will be applied.
- 7) INA Alert assumes all existing equipment is in working order. Additional costs will apply if any existing equipment needs to be replaced.
- 8) INA Alert assumes the internet and phone lines necessary for new equipment has been installed and is in functional condition. If this is not the case, additional costs and install time may apply.

- 9) 50% of proposal due upon approval, remaining balance due upon completion\*. (Sales Tax added to final invoice if applicable)
- 10) \*If project is extended past one month from start date, then progress beyond 50% will be billed monthly on the 20th of the month until completion. Remain balance will be due upon completion.
- 11) In the event that the job requires the use of a lift, the responsibility is placed upon the customer to cover the financial costs associated with the rental of the lift equipment.
- 12) Accounts not paid in full within 30 days of the billing date on the final or monthly invoice will incur a 3% service charge, calculated on the outstanding balance before applying current payments or credits shown on the monthly statement.

Bid For: Gering Public Schools - Northfield Elementary  
 POC: Richard Evans - revans@geringschools.net  
 1900 Flaten Ave, Gering, NE 69341



Technology Products and Service

PO BOX 96  
 112 N Main  
 Ellinwood, KS 67526

2/16/2026 Quote #12308-26

Cameras & Accessories				
QTY	MODEL NAME	DESCRIPTION	UNIT COST	LINE TOTAL
2	20C-H5A-4MH-30	5MP 4 head H5A Multisensor Camera; Alta 30 Day	\$ 2,006.43	\$ 4,012.86
2	H5AMH-AD-PEND1	Outdoor pendant mount adapter. For use with the Avigilon H5A Multisensor	\$ 149.46	\$ 298.92
2	H5AMH-DO-COVR1	Dome bubble and cover, for outdoor surface mount or pendant mount, clear. For use with the Avigilon H5A Multisensor	\$ 149.46	\$ 298.92
2	WLMT-1001	Wall Mount For Large Pendant Camera	\$ 90.99	\$ 181.98
2	H4AMH-AD-IRIL1	IR illuminator ring, up to 30m (100ft), for use with H4AMH-DO-COVR1.	\$ 292.05	\$ 584.10
2	CRNMT-1001	Corner Mount For Large Pendant Wall Mount WLMT-1001	\$ 108.75	\$ 217.50
2	POE90U-1BT	PoE injector 802.3bt 90W Single Port	\$ 285.69	\$ 571.38
4	5.0C-H6SL-DO1-IR-30	5MP H6SL Outdoor IR Dome Camera with 3.4-10.5mm lens; Alta 30 Day	\$ 849.29	\$ 3,397.16
1	360-W-30	Ava 360 White - 12MP - 30 days	\$ 999.29	\$ 999.29
7	10.0C-H6ADH-DO1-IR-30	2x 5MP H6A Dual Head Camera. Outdoor camera with built-in IR; Alta 30 Day	\$ 1,427.86	\$ 9,995.02
7	NPTA-1201	1.5 inch NPT Adapter for Dual Head Cameras	\$ 52.50	\$ 367.50
7	WLMT-1021	Mount, Pendant Arm, 20cm Long, 1.5 NPT	\$ 78.75	\$ 551.25
1	4.0C-H6A-PTZ-DP30-30	4MP 30 days Alta Pendant PTZ Dome, 30x zoom, 5 year warranty	\$ 2,713.57	\$ 2,713.57
1	POE90U-1BT	PoE injector 802.3bt 90W Single Port	\$ 285.69	\$ 285.69
1	PPMNT-2001	Parapet Wall Arm Mount Large for Outdoor Pendant Camera	\$ 481.25	\$ 481.25
1	BULLET-TE-W	Ava Bullet Tele White - 4K	\$ 1,156.43	\$ 1,156.43
4	5.0C-H6SL-D1-IR-30	5MP H6SL Indoor IR Dome Camera with 3.4-10.5mm lens; Alta 30 Day	\$ 706.43	\$ 2,825.72
2	ACMICR-1001	Internal microphone accessory for Dome Cameras	\$ 7.50	\$ 15.00
4	15C-H5A-3MH-30	5MP 3 head H5A Multisensor Camera; Alta 30 Day	\$ 1,685.00	\$ 6,740.00
4	H5AMH-AD-CEIL1	In-ceiling adapter, must order a H5AMH-DC-COVR1.	\$ 132.75	\$ 531.00
4	H5AMH-DC-COVR1	Dome bubble and cover, for in-ceiling mount, clear. For use with the Avigilon H5A Multisensor	\$ 65.99	\$ 263.96
4	CLPNL-1001	Ceiling panel metal white 2 ft X 2 ft to replace existing ceiling tile for Multi Sensor Multi directional camera	\$ 82.64	\$ 330.56

Storage & Software				
QTY	MODEL NAME	DESCRIPTION	UNIT COST	LINE TOTAL
22	AWA-CLD-5Y	Alta Aware License 5 years	\$ 649.00	\$ 14,278.00

Custom Line Items				
QTY	MODEL NAME	DESCRIPTION	UNIT COST	LINE TOTAL
1000	Indoor Cable	Cat6 Blue Indoor Cable #77-240-2A - 23-4P UTP-CMR SOL BC CAT6 THERMOPLASTIC/FRPVC SERIES 77 BLUE POP BOX	\$ 0.43	\$ 430.00
1	Installation	Hardware Installation & Software Configuration	\$ 10,640.00	\$ 10,640.00
1	Miscellaneous	Misc: Connectors, Mounting Brackets, Clips, Etc	\$ 2,500.00	\$ 2,500.00

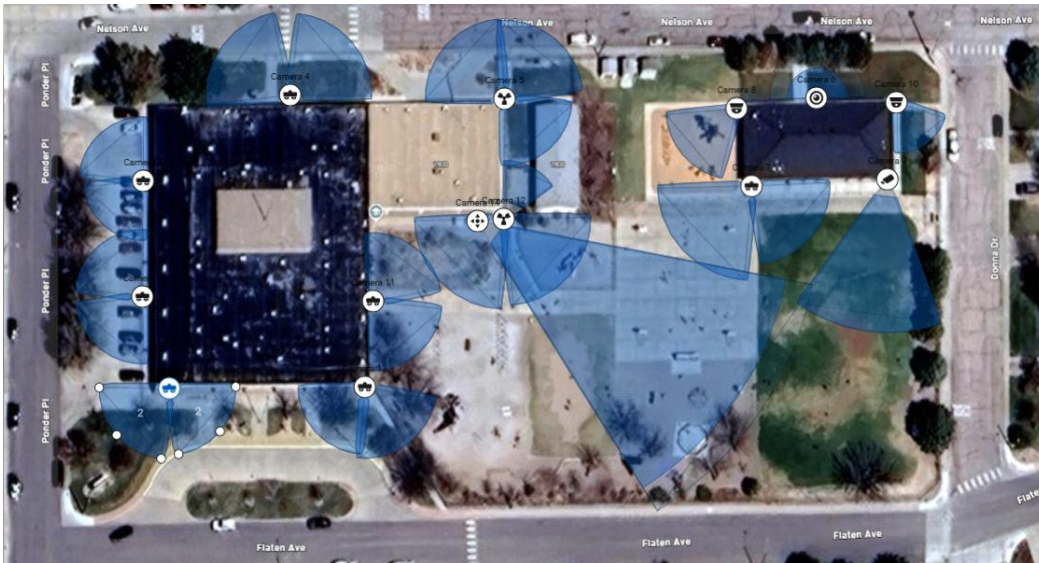
**Scope Of Work:**

This proposal includes the necessary hardware, software, and labor to install twenty-two (22) new Avigilon Alta Cloud-based cameras for Gering Public Schools. These devices will replace the existing IP camera system and provide a centralized cloud-based video management platform.

Replacement cameras will utilize existing structured cabling where available, while new camera locations will receive new cabling and be connected to the district's existing PoE network switches. The deployment includes the following breakdown:

- Exterior Cameras: 14
- Interior Cameras: 8

INA Alert technicians will coordinate installation, configuration, and system commissioning. System training will be provided upon project completion. Any changes to device quantities, camera placement, or scope of work may result in an adjustment to the final project price.



**Quotation Prepared By:**

**INAalert**  
 Sales@INAalert.com  
 620.566.3050

Quotation and Pricing Valid for 30 Days.

Not Valid After 3/18/2026

Project Designed By: Jordon Smith

**Initial:** \_\_\_\_\_

Currency: USD

<b>Subtotal</b>	<b>\$ 64,667.06</b>
<b>Shipping &amp; Handling</b>	_____
<b>Sales Tax %</b>	_____
<b>Total</b>	<b>\$ 64,667.06</b>

**Payment Options**

<b>One-Time Payment</b>	<b>\$ 64,667.06</b>
<b>or 5 - Year Payment Plan</b>	
<b>Please Indicate: Accept: <input type="checkbox"/> Decline: <input type="checkbox"/></b>	<b>\$ 16,004.65</b>

To accept this quotation, sign here and return:

Approved By: \_\_\_\_\_

Approval Date: \_\_\_\_\_

**This quote is subject to the following conditions & parameters:**

- 1) This is a quote setting out the proposed price at which INA Alert is prepared to supply the products and services described herein. It is not intended to create a legally binding contract.
- 2) Price may include an approximation of local sales tax. Actual taxes and duties may be different than the estimate referenced herein.
- 3) Price may include an approximation of shipping charges. Actual shipping charges may be different than the estimate referenced herein.
- 4) Upon acceptance of monthly payment terms, customer will be provided ACH payment sheet to be filled out and returned to INA Alert. Monthly payments will begin on the first Monday of each month following the acceptance of the quote.
- 5) Upon acceptance of this quote, the project is subject to progress billing based on equipment and service(s) delivered to the customer.
- 6) The owner accepts all responsibility for installing equipment that is quoted to be shipped directly to the facility without installation. If INA Alert technician must be scheduled to come on-site, normal billing rates will be applied.
- 7) INA Alert assumes all existing equipment is in working order. Additional costs will apply if any existing equipment needs to be replaced.
- 8) INA Alert assumes the internet and phone lines necessary for new equipment has been installed and is in functional condition. If this is not the case, additional costs and install time may apply.
- 9) 50% of proposal due upon approval, remaining balance due upon completion\*. (Sales Tax added to final invoice if applicable)
- 10) \*If project is extended past one month from start date, then progress beyond 50% will be billed monthly on the 20th of the month until completion. Remain balance will be due upon completion.
- 11) In the event that the job requires the use of a lift, the responsibility is placed upon the customer to cover the financial costs associated with the rental of the lift equipment.
- 12) Accounts not paid in full within 30 days of the billing date on the final or monthly invoice will incur a 3% service charge, calculated on the outstanding balance before applying current payments or credits shown on the monthly statement.

**Bid For: Gering Public Schools - Northfield Elementary**  
**POC: Richard Evans - revans@geringschools.net**  
**1900 Flaten Ave, Gering, NE 69341**



**Technology Products and Service**

**PO BOX 96**  
**112 N Main**  
**Ellinwood, KS 67526**

**2/16/2026 Quote #12309-26**

<b>Access Control Hardware</b>				
<b>QTY</b>	<b>MODEL NAME</b>	<b>DESCRIPTION</b>	<b>UNIT COST</b>	<b>LINE TOTAL</b>
2	SYS-8ENT-DVE4	Core Series 8 port 12/24VSmart Hub, 8 entry capacity Power supply: FPO series, E4 enclosure	\$ 2,604.17	\$ 5,208.34
4	ACTUVATE   SLA127	Rechargeable Sealed Lead Acid Batteries 12V Sealed Battery for LSP Box	\$ 26.91	\$ 107.64
10	OP-R2X-STND	Standard Smart Reader V2, black, low and high frequency version	\$ 229.17	\$ 2,291.70
3	OP-VID-PRO-INT	The Openpath Video Intercom Reader Pro combines a built-in high resolution camera, intelligent intercom, and multi-technology reader into a slim and sleek form factor	\$ 833.33	\$ 2,499.99
5	AC-ALTA-SCH-ENGAGE-GWE	Allegion Gateway - For online locks. Supports up to (10) Engage series locks within 30' of gateway.	\$ 605.92	\$ 3,029.60
20	AC-ALTA-SCH-LE-CUSTOM	The Schlage® LE wireless mortise lock is designed to affordably extend electronic access control deeper into the building beyond traditional perimeter and high security openings.	\$ 1,361.47	\$ 27,229.40
1	SECURITY DOOR CONTROLS   LR100FCK	LR100FCK FIRST CHOICE ELR KIT,36"	\$ 576.07	\$ 576.07
1	SECURITY DOOR CONTROLS   602RF	Access Control Power Supply, 115 Volt AC, 600 Milliampere, 50/60 Hertz Input, 12/24 Volt DC, 1 Ampere, Class 2 Output, 12" Width x 4" Depth x 12" Height, Steel, With Cabinet	\$ 319.46	\$ 319.46
1	SECURITY DOOR CONTROLS   FB-4	FB-4 FUSED TERMINAL BOARD	\$ 80.95	\$ 80.95

<b>Storage &amp; Software</b>				
<b>QTY</b>	<b>MODEL NAME</b>	<b>DESCRIPTION</b>	<b>UNIT COST</b>	<b>LINE TOTAL</b>
4	SW-ALLE-OPP5-5Y	Allegion Wireless locks purchased through Openpath (5 Years)	\$ 1,000.00	\$ 4,000.00
3	SW-INTC-PRM-5Y	(License V2) Intercom Device License - Premium (5 Years)	\$ 1,500.00	\$ 4,500.00
1	SW-PRM-P10-5Y	Premium: Pack of 10 entries (5 Years)	\$ 7,500.00	\$ 7,500.00

<b>Custom Line Items</b>				
<b>QTY</b>	<b>MODEL NAME</b>	<b>DESCRIPTION</b>	<b>UNIT COST</b>	<b>LINE TOTAL</b>
800	Access Control Cable	All in One Access Control Cable	\$ 1.05	\$ 840.00
1000	Indoor Cable	Cat6 Blue Indoor Cable #77-240-2A	\$ 0.43	\$ 430.00
1	Installation	Hardware Installation & Software Configuration	\$ 8,550.00	\$ 8,550.00
1	Miscellaneous	Misc: Connectors, Mounting Brackets, Clips, Etc	\$ 1,250.00	\$ 1,250.00

**Scope Of Work:**

This proposal includes the necessary hardware, software, and labor to install six (6) new access-controlled doors between the Technology Building and the Maintenance Shop. Four (4) doors will be installed at the Technology Building, including two (2) wireless interior doors serving the server room and two (2) exterior entrance doors. The Maintenance Shop will receive the remaining two (2) access-controlled doors.

This project includes Avigilon Alta Access licenses for a five (5) year term. Final door configurations and access permissions will be coordinated with the Gering Public Schools IT Department prior to system commissioning. Any changes to the scope of work or required hardware may result in an adjustment to the final project price.

**Quotation Prepared By:**



Sales@INAalert.com  
620.566.3050

Quotation and Pricing Valid for 30 Days.

Not Valid After 3/18/2026

Project Designed By: Jordon Smith

Initial: \_\_\_\_\_

Currency: USD

Subtotal	\$ 68,413.15
Shipping & Handling	
Sales Tax %	
<b>Total</b>	<b>\$ 68,413.15</b>

**Payment Options**

One-Time Payment \$ 68,413.15

or 5 - Year Payment Plan

Please Indicate: Accept:  Decline:  \$ 16,931.78

To accept this quotation, sign here and return:

Approved By: \_\_\_\_\_

Approval Date: \_\_\_\_\_

INA Alert, Inc.  
Representative: \_\_\_\_\_

Approval Date: \_\_\_\_\_

**This quote is subject to the following conditions & parameters:**

- 1) This is a quote setting out the proposed price at which INA Alert is prepared to supply the products and services described herein. It is not intended to create a legally binding contract.
- 2) Price may include an approximation of local sales tax. Actual taxes and duties may be different than the estimate referenced herein.
- 3) Price may include an approximation of shipping charges. Actual shipping charges may be different than the estimate referenced herein.
- 4) Upon acceptance of monthly payment terms, customer will be provided ACH payment sheet to be filled out and returned to INA Alert. Monthly payments will begin on the first Monday of each month following the acceptance of the quote.
- 5) Upon acceptance of this quote, the project is subject to progress billing based on equipment and service(s) delivered to the customer.
- 6) The owner accepts all responsibility for installing equipment that is quoted to be shipped directly to the facility without installation. If INA Alert technician must be scheduled to come on-site, normal billing rates will be applied.
- 7) INA Alert assumes all existing equipment is in working order. Additional costs will apply if any existing equipment needs to be replaced.
- 8) INA Alert assumes the internet and phone lines necessary for new equipment has been installed and is in functional condition. If this is not the case, additional costs and install time may apply.
- 9) 50% of proposal due upon approval, remaining balance due upon completion\*. (Sales Tax added to final invoice if applicable)

- 10) \*If project is extended past one month from start date, then progress beyond 50% will be billed monthly on the 20th of the month until completion. Remain balance will be due upon completion.
- 11) In the event that the job requires the use of a lift, the responsibility is placed upon the customer to cover the financial costs associated with the rental of the lift equipment.
- 12) Accounts not paid in full within 30 days of the billing date on the final or monthly invoice will incur a 3% service charge, calculated on the outstanding balance before applying current payments or credits shown on the monthly statement.

Bid For: Gering Public Schools - Geil Elementary  
 POC: Richard Evans - revans@geringschools.net  
 1600 D St, Gering, NE 69341



Technology Products and Service

PO BOX 96  
 112 N Main  
 Ellinwood, KS 67526

2/16/2026 Quote #12310-26

Cameras & Accessories				
QTY	MODEL NAME	DESCRIPTION	UNIT COST	LINE TOTAL
3	20C-H5A-4MH-30	5MP 4 head H5A Multisensor Camera; Alta 30 Day	\$ 2,006.43	\$ 6,019.29
3	H5AMH-AD-PEND1	Outdoor pendant mount adapter. For use with the Avigilon H5A Multisensor	\$ 149.46	\$ 448.38
3	H5AMH-DO-COVR1	Dome bubble and cover, for outdoor surface mount or pendant mount, clear. For use with the Avigilon H5A Multisensor	\$ 149.46	\$ 448.38
3	WLMT-1001	Wall Mount For Large Pendant Camera	\$ 90.99	\$ 272.97
3	H4AMH-AD-IRIL1	IR illuminator ring, up to 30m (100ft), for use with H4AMH-DO-COVR1.	\$ 292.05	\$ 876.15
2	CRNMT-1001	Corner Mount For Large Pendant Wall Mount WLMT-1001	\$ 108.75	\$ 217.50
3	POE90U-1BT	PoE injector 802.3bt 90W Single Port	\$ 285.69	\$ 857.07
1	5.0C-H6SL-BO1-IR-30	5MP H6SL Outdoor IR Bullet Camera with 3.4-10.5mm lens; Alta 30 Day	\$ 935.00	\$ 935.00
6	5.0C-H6SL-DO1-IR-30	5MP H6SL Outdoor IR Dome Camera with 3.4-10.5mm lens; Alta 30 Day	\$ 849.29	\$ 5,095.74
4	H6SL-DO-SHLD1	Weather Shield for H6SL Outdoor Dome Cameras	\$ 15.00	\$ 60.00
4	10.0C-H6ADH-DO1-IR-30	2x 5MP H6A Dual Head Camera. Outdoor camera with built-in IR; Alta 30 Day	\$ 1,427.86	\$ 5,711.44
4	NPTA-1201	1.5 inch NPT Adapter for Dual Head Cameras	\$ 52.50	\$ 210.00
4	WLMT-1021	Mount, Pendant Arm, 20cm Long, 1.5 NPT	\$ 78.75	\$ 315.00
2	BULLET-TE-W	Ava Bullet Tele White - 4K	\$ 1,156.43	\$ 2,312.86
2	5.0C-H6SL-D1-IR-30	5MP H6SL Indoor IR Dome Camera with 3.4-10.5mm lens; Alta 30 Day	\$ 706.43	\$ 1,412.86
2	ACMICR-1001	Internal microphone accessory for Dome Cameras	\$ 7.50	\$ 15.00
4	15C-H5A-3MH-30	5MP 3 head H5A Multisensor Camera; Alta 30 Day	\$ 1,685.00	\$ 6,740.00
4	H5AMH-AD-CEIL1	In-ceiling adapter, must order a H5AMH-DC-COVR1.	\$ 132.75	\$ 531.00
4	H5AMH-DC-COVR1	Dome bubble and cover, for in-ceiling mount, clear. For use with the Avigilon H5A Multisensor	\$ 65.99	\$ 263.96
4	CLPNL-1001	Ceiling panel metal white 2 ft X 2 ft to replace existing ceiling tile for Multi Sensor Multi directional camera	\$ 82.64	\$ 330.56

Storage & Software				
QTY	MODEL NAME	DESCRIPTION	UNIT COST	LINE TOTAL
20	AWA-CLD-5Y	Alta Aware License 5 years	\$ 649.00	\$ 12,980.00

Custom Line Items				
QTY	MODEL NAME	DESCRIPTION	UNIT COST	LINE TOTAL
1000	Indoor Cable	Cat6 Blue Indoor Cable #77-240-2A - 23-4P UTP-CMR SOL BC CAT6 THERMOPLASTIC/FRPVC SERIES 77 BLUE POP BOX	\$ 0.43	\$ 430.00
1	Installation	Hardware Installation & Software Configuration	\$ 10,450.00	\$ 10,450.00
1	Miscellaneous	Misc: Connectors, Mounting Brackets, Clips, Etc	\$ 2,500.00	\$ 2,500.00

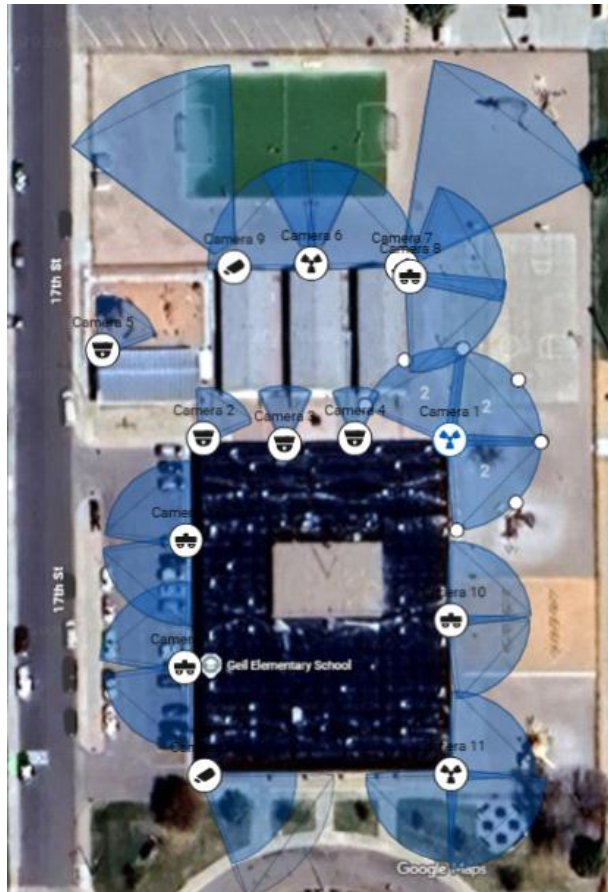
Scope Of Work:

This proposal includes the necessary hardware, software, and labor to install twenty (20) new Avigilon Alta Cloud-based cameras at Geil Elementary. These devices will replace the existing IP camera system and provide a centralized cloud-based video management platform.

Replacement cameras will utilize existing structured cabling where available, while new camera locations will receive new cabling and be connected to the school's existing PoE network switches. The deployment includes the following breakdown:

- Exterior Cameras: 12
- Interior Cameras: 8

INA Alert technicians will perform installation, configuration, and system commissioning in coordination with the school's designated point of contact. Training on the Avigilon Alta system will be provided upon project completion. Any changes to camera quantities, placement, or scope of work may result in an adjustment to the final project price.



Quotation Prepared By:

**INAalert**  
 Sales@INAalert.com  
 620.566.3050

Quotation and Pricing Valid for 30 Days.

Not Valid After 3/18/2026

Project Designed By: Jordon Smith

	<u>Initial:</u>
	Currency: USD
Subtotal	\$ 59,433.16
Shipping & Handling	<u>                    </u>
Sales Tax %	<u>                    </u>
Total	<u>\$ 59,433.16</u>

**Payment Options**

One-Time Payment	<u>\$ 59,433.16</u>
------------------	---------------------

or 5 - Year Payment Plan

Please Indicate: Accept:  Decline:  \$ 14,709.30

To accept this quotation, sign here and return:

Approved By: \_\_\_\_\_

Approval Date: \_\_\_\_\_

INA Alert, Inc.  
Representative: \_\_\_\_\_

Approval Date: \_\_\_\_\_

**This quote is subject to the following conditions & parameters:**

- 1) This is a quote setting out the proposed price at which INA Alert is prepared to supply the products and services described herein. It is not intended to create a legally binding contract.
- 2) Price may include an approximation of local sales tax. Actual taxes and duties may be different than the estimate referenced herein.
- 3) Price may include an approximation of shipping charges. Actual shipping charges may be different than the estimate referenced herein.
- 4) Upon acceptance of monthly payment terms, customer will be provided ACH payment sheet to be filled out and returned to INA Alert. Monthly payments will begin on the first Monday of each month following the acceptance of the quote.
- 5) Upon acceptance of this quote, the project is subject to progress billing based on equipment and service(s) delivered to the customer.
- 6) The owner accepts all responsibility for installing equipment that is quoted to be shipped directly to the facility without installation. If INA Alert technician must be scheduled to come on-site, normal billing rates will be applied.
- 7) INA Alert assumes all existing equipment is in working order. Additional costs will apply if any existing equipment needs to be replaced.
- 8) INA Alert assumes the internet and phone lines necessary for new equipment has been installed and is in functional condition. If this is not the case, additional costs and install time may apply.
- 9) 50% of proposal due upon approval, remaining balance due upon completion\*. (Sales Tax added to final invoice if applicable)
- 10) \*If project is extended past one month from start date, then progress beyond 50% will be billed monthly on the 20th of the month until completion. Remain balance will be due upon completion.
- 11) In the event that the job requires the use of a lift, the responsibility is placed upon the customer to cover the financial costs associated with the rental of the lift equipment.
- 12) Accounts not paid in full within 30 days of the billing date on the final or monthly invoice will incur a 3% service charge, calculated on the outstanding balance before applying current payments or credits shown on the monthly statement.

**Bid For: Gering Public Schools - Geil Elementary**  
**POC: Richard Evans - revans@geringschools.net**  
**1600 D St, Gering, NE 69341**



**Technology Products and Service**

**PO BOX 96**  
**112 N Main**  
**Ellinwood, KS 67526**

**2/16/2026 Quote #12311-26**

<b>Access Control Hardware</b>				
<b>QTY</b>	<b>MODEL NAME</b>	<b>DESCRIPTION</b>	<b>UNIT COST</b>	<b>LINE TOTAL</b>
4	OP-CR-SDC	Single Door Controller, 2 entry capacity, 2 reader inputs, 2 Wiegand inputs 2 REX, 2 contact, 2 output relays. PoE, PoE+ or DV 12V or 24V powered	\$ 770.83	\$ 3,083.32
1	SYS-8ENT-DVE4	Core Series 8 port 12/24V Smart Hub, 8 entry capacity Power supply: FPO series, E4 enclosure	\$ 2,604.17	\$ 2,604.17
2	ACTUVATE   SLA127	Rechargeable Sealed Lead Acid Batteries 12V Sealed Battery for LSP Box	\$ 26.91	\$ 53.82
8	OP-R2X-STND	Standard Smart Reader V2, black, low and high frequency version	\$ 229.17	\$ 1,833.36
2	OP-VID-PRO-INT	The Openpath Video Intercom Reader Pro combines a built-in high resolution camera, intelligent intercom, and multi-technology reader into a slim and sleek form factor	\$ 833.33	\$ 1,666.66
3	HES   1500C-630	Electric Strike, Heavy Duty, Low Profile, 12/24 Volt DC, 0.24/0.12	\$ 423.59	\$ 1,270.77
6	HES 9400	Electric Locking Door Strike	\$ 425.24	\$ 2,551.44
1	ADAMS RITE MANUFACTURING   4510-36-201-335	Door Deadlatch, Standard Duty, Right Hand/Right Hand Reverse, 1-1/8" Backset, 2-5/8" Flat Strike, Flat Clear Anodized Faceplate, For Aluminum Door	\$ 71.33	\$ 71.33
1	ADAMS RITE MANUFACTURING   4036-01-01-335	MORTISE KEY CYLINDER, SCHLAGE C KEYBOW/K	\$ 36.87	\$ 36.87
1	ADAMS RITE MANUFACTURING   4066-01-335	MORTISE CYLINDER THUMBTURN	\$ 36.54	\$ 36.54
1	ADAMS RITE MANUFACTURING   7100-510-335-00	Door Electric Strike, Standard/Fail Secure, 24 Volt DC, Black Anodized, With 4-7/8" Flat Faceplate, For Aluminum Door	\$ 146.79	\$ 146.79
5	AC-ALTA-SCH-ENGAGE-GWE	Allegion Gateway - For online locks. Supports up to (10) Engage series locks within 30' of gateway.	\$ 605.92	\$ 3,029.60
16	AC-ALTA-SCH-LE-CUSTOM	The Schlage® LE wireless mortise lock is designed to affordably extend electronic access control deeper into the building beyond traditional perimeter and high security openings.	\$ 1,361.47	\$ 21,783.52

<b>Storage &amp; Software</b>				
<b>QTY</b>	<b>MODEL NAME</b>	<b>DESCRIPTION</b>	<b>UNIT COST</b>	<b>LINE TOTAL</b>
4	SW-ALLE-OPP5-5Y	Allegion Wireless locks purchased through Openpath (5 Years)	\$ 1,000.00	\$ 4,000.00
2	SW-INTC-PRM-5Y	(License V2) Intercom Device License - Premium (5 Years)	\$ 1,500.00	\$ 3,000.00
1	SW-PRM-P10-5Y	Premium: Pack of 10 entries (5 Years)	\$ 7,500.00	\$ 7,500.00

<b>Custom Line Items</b>				
<b>QTY</b>	<b>MODEL NAME</b>	<b>DESCRIPTION</b>	<b>UNIT COST</b>	<b>LINE TOTAL</b>
600	Access Control Cable	All in One Access Control Cable	\$ 1.05	\$ 630.00

1000	Indoor Cable	Cat6 Blue Indoor Cable #77-240-2A	\$	0.43	\$	430.00
1	Installation	Hardware Installation & Software Configuration	\$	9,690.00	\$	9,690.00
1	Miscellaneous	Misc: Connectors, Mounting Brackets, Clips, Etc	\$	1,250.00	\$	1,250.00

**Scope Of Work:**

Included in this proposal is the necessary hardware, software, and labor to provide Avigilon Alta Access Control at Geil Elementary School. This scope includes the takeover of existing access control equipment and the installation of new wired and wireless access-controlled doors as outlined below.

**Geil Elementary – Main Building**

Existing Wired Doors: 3  
 New Wired Doors: 3  
 New Wireless Doors: 16

**Geil Elementary – Modular Buildings**

Existing Wired Doors: 0  
 New Wired Doors: 4  
 New Wireless Doors: 0

INA Alert technicians will perform installation, configuration, and system commissioning to ensure proper operation and full integration with the Avigilon Alta Access platform. Any changes to door quantities, hardware requirements, or scope of work may result in an adjustment to the final project price.

**Quotation Prepared By:**



Sales@INAAlert.com  
 620.566.3050

Quotation and Pricing Valid for 30 Days.

Not Valid After 3/18/2026

Project Designed By: Jordon Smith

**Initial:**

Currency: USD

Subtotal	\$	64,668.19
Shipping & Handling		
Sales Tax %		
<b>Total</b>	<b>\$</b>	<b>64,668.19</b>

**Payment Options**

**One-Time Payment** \$ 64,668.19

or 5 - Year Payment Plan

Please Indicate: Accept:  Decline:  \$ 16,004.93

To accept this quotation, sign here and return:

Approved By: \_\_\_\_\_

Approval Date: \_\_\_\_\_

INA Alert, Inc.  
 Representative: \_\_\_\_\_

Approval Date: \_\_\_\_\_

**This quote is subject to the following conditions & parameters:**

- 1) This is a quote setting out the proposed price at which INA Alert is prepared to supply the products and services described herein. It is not intended to create a legally binding contract.
- 2) Price may include an approximation of local sales tax. Actual taxes and duties may be different than the estimate referenced herein.

- 3) Price may include an approximation of shipping charges. Actual shipping charges may be different than the estimate referenced herein.
- 4) Upon acceptance of monthly payment terms, customer will be provided ACH payment sheet to be filled out and returned to INA Alert. Monthly payments will begin on the first Monday of each month following the acceptance of the quote.
- 5) Upon acceptance of this quote, the project is subject to progress billing based on equipment and service(s) delivered to the customer.
- 6) The owner accepts all responsibility for installing equipment that is quoted to be shipped directly to the facility without installation. If INA Alert technician must be scheduled to come on-site, normal billing rates will be applied.
- 7) INA Alert assumes all existing equipment is in working order. Additional costs will apply if any existing equipment needs to be replaced.
- 8) INA Alert assumes the internet and phone lines necessary for new equipment has been installed and is in functional condition. If this is not the case, additional costs and install time may apply.
- 9) 50% of proposal due upon approval, remaining balance due upon completion\*. (Sales Tax added to final invoice if applicable)
- 10) \*If project is extended past one month from start date, then progress beyond 50% will be billed monthly on the 20th of the month until completion. Remain balance will be due upon completion.
- 11) In the event that the job requires the use of a lift, the responsibility is placed upon the customer to cover the financial costs associated with the rental of the lift equipment.
- 12) Accounts not paid in full within 30 days of the billing date on the final or monthly invoice will incur a 3% service charge, calculated on the outstanding balance before applying current payments or credits shown on the monthly statement.

Bid For: Gering Public Schools - Geil Elementary  
 POC: Richard Evans - revans@geringschools.net  
 1600 D St, Gering, NE 69341



Technology Products and Service

PO BOX 96  
 112 N Main  
 Ellinwood, KS 67526

2/16/2026 Quote #12310-26

Cameras & Accessories				
QTY	MODEL NAME	DESCRIPTION	UNIT COST	LINE TOTAL
3	20C-H5A-4MH-30	5MP 4 head H5A Multisensor Camera; Alta 30 Day	\$ 2,006.43	\$ 6,019.29
3	H5AMH-AD-PEND1	Outdoor pendant mount adapter. For use with the Avigilon H5A Multisensor	\$ 149.46	\$ 448.38
3	H5AMH-DO-COVR1	Dome bubble and cover, for outdoor surface mount or pendant mount, clear. For use with the Avigilon H5A Multisensor	\$ 149.46	\$ 448.38
3	WLMT-1001	Wall Mount For Large Pendant Camera	\$ 90.99	\$ 272.97
3	H4AMH-AD-IRIL1	IR illuminator ring, up to 30m (100ft), for use with H4AMH-DO-COVR1.	\$ 292.05	\$ 876.15
2	CRNMT-1001	Corner Mount For Large Pendant Wall Mount WLMT-1001	\$ 108.75	\$ 217.50
3	POE90U-1BT	PoE injector 802.3bt 90W Single Port	\$ 285.69	\$ 857.07
2	5.0C-H6SL-DO1-IR-30	5MP H6SL Outdoor IR Dome Camera with 3.4-10.5mm lens; Alta 30 Day	\$ 849.29	\$ 1,698.58
2	H6SL-DO-SHLD1	Weather Shield for H6SL Outdoor Dome Cameras	\$ 15.00	\$ 30.00
13	10.0C-H6ADH-DO1-IR-30	2x 5MP H6A Dual Head Camera. Outdoor camera with built-in IR; Alta 30 Day	\$ 1,427.86	\$ 18,562.18
8	NPTA-1201	1.5 inch NPT Adapter for Dual Head Cameras	\$ 52.50	\$ 420.00
8	WLMT-1021	Mount, Pendant Arm, 20cm Long, 1.5 NPT	\$ 78.75	\$ 630.00
1	CRNMT-1001	Corner Mount For Large Pendant Wall Mount WLMT-1001	\$ 108.75	\$ 108.75
1	BULLET-TE-W	Ava Bullet Tele White - 4K	\$ 1,156.43	\$ 1,156.43
3	5.0C-H6SL-D1-IR-30	5MP H6SL Indoor IR Dome Camera with 3.4-10.5mm lens; Alta 30 Day	\$ 706.43	\$ 2,119.29
2	15C-H5A-3MH-30	5MP 3 head H5A Multisensor Camera; Alta 30 Day	\$ 1,685.00	\$ 3,370.00
2	H5AMH-AD-CEIL1	In-ceiling adapter, must order a H5AMH-DC-COVR1.	\$ 132.75	\$ 265.50
2	H5AMH-DC-COVR1	Dome bubble and cover, for in-ceiling mount, clear. For use with the Avigilon H5A Multisensor	\$ 65.99	\$ 131.98
2	CLPNL-1001	Ceiling panel metal white 2 ft X 2 ft to replace existing ceiling tile for Multi Sensor Multi directional camera	\$ 82.64	\$ 165.28

Storage & Software				
QTY	MODEL NAME	DESCRIPTION	UNIT COST	LINE TOTAL
23	AWA-CLD-5Y	Alta Aware License 5 years	\$ 649.00	\$ 14,927.00

Custom Line Items				
QTY	MODEL NAME	DESCRIPTION	UNIT COST	LINE TOTAL
400	Indoor Cable	Cat6 Blue Indoor Cable #77-240-2A - 23-4P UTP-CMR SOL BC CAT6 THERMOPLASTIC/FRPVC SERIES 77 BLUE POP BOX	\$ 0.43	\$ 172.00
1	Installation	Hardware Installation & Software Configuration	\$ 10,830.00	\$ 10,830.00
1	Miscellaneous	Misc: Connectors, Mounting Brackets, Clips, Etc	\$ 2,500.00	\$ 2,500.00

Scope Of Work:

This proposal includes the necessary hardware, software, and labor to install twenty-three (23) new Avigilon Alta Cloud-based cameras at Geil Elementary. These devices will replace the existing IP camera system and provide a centralized, cloud-based video management platform.

Replacement cameras will utilize existing structured cabling where available, while new camera locations will receive new cabling and be connected to the school's existing PoE network switches. The deployment includes the following breakdown:

- Exterior Cameras: 10
- Interior Cameras: 13

INA Alert technicians will perform installation, configuration, and system commissioning in coordination with the school's designated point of contact. Training on the Avigilon Alta system will be provided upon project completion. Any changes to camera quantities, placement, or scope of work may result in an adjustment to the final project price.



Quotation Prepared By:

**INAalert**  
 Sales@INAalert.com  
 620.566.3050

Quotation and Pricing Valid for 30 Days.

Not Valid After 3/18/2026

Project Designed By: Jordon Smith

	<b>Initial:</b>
	Currency: USD
Subtotal	\$ 66,226.73
Shipping & Handling	_____
Sales Tax %	_____
<b>Total</b>	<b>\$ 66,226.73</b>

**Payment Options**

One-Time Payment	\$ 66,226.73
------------------	--------------

or 5 - Year Payment Plan

Please Indicate: Accept:  Decline:  \$ 16,390.66

To accept this quotation, sign here and return:

Approved By: \_\_\_\_\_

Approval Date: \_\_\_\_\_

INA Alert, Inc.  
Representative: \_\_\_\_\_

Approval Date: \_\_\_\_\_

**This quote is subject to the following conditions & parameters:**

- 1) This is a quote setting out the proposed price at which INA Alert is prepared to supply the products and services described herein. It is not intended to create a legally binding contract.
- 2) Price may include an approximation of local sales tax. Actual taxes and duties may be different than the estimate referenced herein.
- 3) Price may include an approximation of shipping charges. Actual shipping charges may be different than the estimate referenced herein.
- 4) Upon acceptance of monthly payment terms, customer will be provided ACH payment sheet to be filled out and returned to INA Alert. Monthly payments will begin on the first Monday of each month following the acceptance of the quote.
- 5) Upon acceptance of this quote, the project is subject to progress billing based on equipment and service(s) delivered to the customer.
- 6) The owner accepts all responsibility for installing equipment that is quoted to be shipped directly to the facility without installation. If INA Alert technician must be scheduled to come on-site, normal billing rates will be applied.
- 7) INA Alert assumes all existing equipment is in working order. Additional costs will apply if any existing equipment needs to be replaced.
- 8) INA Alert assumes the internet and phone lines necessary for new equipment has been installed and is in functional condition. If this is not the case, additional costs and install time may apply.
- 9) 50% of proposal due upon approval, remaining balance due upon completion\*. (Sales Tax added to final invoice if applicable)
- 10) \*If project is extended past one month from start date, then progress beyond 50% will be billed monthly on the 20th of the month until completion. Remain balance will be due upon completion.
- 11) In the event that the job requires the use of a lift, the responsibility is placed upon the customer to cover the financial costs associated with the rental of the lift equipment.
- 12) Accounts not paid in full within 30 days of the billing date on the final or monthly invoice will incur a 3% service charge, calculated on the outstanding balance before applying current payments or credits shown on the monthly statement.

**Bid For: Gering Public Schools - Geil Elementary**  
**POC: Richard Evans - revans@geringschools.net**  
**1600 D St, Gering, NE 69341**



**Technology Products and Service**

**PO BOX 96**  
**112 N Main**  
**Ellinwood, KS 67526**

2/16/2026 Quote #12313-26

**Access Control Hardware**

QTY	MODEL NAME	DESCRIPTION	UNIT COST	LINE TOTAL
4	OP-CR-SDC	Single Door Controller, 2 entry capacity, 2 reader inputs, 2 Wiegand inputs 2 REX, 2 contact, 2 output relays. PoE, PoE+ or DV 12V or 24V powered	\$ 770.83	\$ 3,083.32
1	SYS-8ENT-DVE4	Core Series 8 port 12/24V Smart Hub, 8 entry capacity Power supply: FPO series, E4 enclosure	\$ 2,604.17	\$ 2,604.17
2	ACTUVATE   SLA127	Rechargeable Sealed Lead Acid Batteries 12V Sealed Battery for LSP Box	\$ 26.91	\$ 53.82
13	OP-R2X-STND	Standard Smart Reader V2, black, low and high frequency version	\$ 229.17	\$ 2,979.21
2	OP-VID-PRO-INT	The Openpath Video Intercom Reader Pro combines a built-in high resolution camera, intelligent intercom, and multi-technology reader into a slim and sleek form factor	\$ 833.33	\$ 1,666.66
1	HES 8000C	HES 8000C Electric Strike	\$ 189.15	\$ 189.15
1	HES   1500C-630	Electric Strike, Heavy Duty, Low Profile, 12/24 Volt DC, 0.24/0.12	\$ 423.59	\$ 423.59
4	HES 9400	Electric Locking Door Strike	\$ 425.24	\$ 1,700.96
1	PHI0003	Precision Hardware ELRK-3 Electric Latch Retraction Kit For 3' Door With Wide Stile	\$ 1,348.65	\$ 1,348.65
1	PHI0002	Precision Hardware CM150-08 Control Module For ELR Power Supply	\$ 371.25	\$ 371.25
1	PHI0001	Precision Hardware ELR151 Power Supply For Exit Devices	\$ 911.25	\$ 911.25
8	8080-TWG-W	Door Position Sensor, White	\$ 8.28	\$ 66.24
10	AC-ALTA-SCH-ENGAGE-GWE	Allegion Gateway - For online locks. Supports up to (10) Engage series locks within 30' of gateway.	\$ 605.92	\$ 6,059.20
29	AC-ALTA-SCH-LE-CUSTOM	The Schlage® LE wireless mortise lock is designed to affordably extend electronic access control deeper into the building beyond traditional perimeter and high security openings.	\$ 1,361.47	\$ 39,482.63

**Storage & Software**

QTY	MODEL NAME	DESCRIPTION	UNIT COST	LINE TOTAL
6	SW-ALLE-OPP5-5Y	Allegion Wireless locks purchased through Openpath (5 Years)	\$ 1,000.00	\$ 6,000.00
2	SW-INTC-PRM-5Y	(License V2) Intercom Device License - Premium (5 Years)	\$ 1,500.00	\$ 3,000.00
1	SW-PRM-P10-5Y	Premium: Pack of 10 entries (5 Years)	\$ 7,500.00	\$ 7,500.00
1	SW-PRM-P5-5Y	Premium: Pack of 5 entries (5 Years)	\$ 4,500.00	\$ 4,500.00

**Custom Line Items**

QTY	MODEL NAME	DESCRIPTION	UNIT COST	LINE TOTAL
600	Access Control Cable	All in One Access Control Cable	\$ 1.05	\$ 630.00
1000	Indoor Cable	Cat6 Blue Indoor Cable #77-240-2A	\$ 0.43	\$ 430.00
1	Installation	Hardware Installation & Software Configuration	\$ 13,490.00	\$ 13,490.00
1	Miscellaneous	Misc: Connectors, Mounting Brackets, Clips, Etc	\$ 1,250.00	\$ 1,250.00

**Scope Of Work:**

Included in this proposal is the necessary hardware, software, and labor to provide Avigilon Alta Access Control at Lincoln Elementary School. This scope includes the takeover of existing access control equipment and the installation of new wired and wireless access-controlled doors as outlined below.

Lincoln Elementary School

Existing Wired Doors: 9

New Wired Doors: 7

New Wireless Doors – First Floor: 17

New Wireless Doors – Second Floor: 14

INA Alert technicians will perform installation, configuration, and system commissioning to ensure proper operation and full integration with the Avigilon Alta Access platform. Any changes to the scope of work may result in an adjustment to the final project price.

**Quotation Prepared By:**



Sales@INAalert.com

620.566.3050

Quotation and Pricing Valid for 30 Days.

Not Valid After 3/18/2026

Project Designed By: Jordon Smith

Initial:

Currency: USD

Subtotal	\$ 97,740.10
Shipping & Handling	
Sales Tax %	
<b>Total</b>	<b>\$ 97,740.10</b>

**Payment Options**

One-Time Payment \$ 97,740.10

or 5 - Year Payment Plan

Please Indicate: Accept:  Decline:  \$ 24,190.00

To accept this quotation, sign here and return:

Approved By: \_\_\_\_\_

Approval Date: \_\_\_\_\_

INA Alert, Inc.  
Representative: \_\_\_\_\_

Approval Date: \_\_\_\_\_

**This quote is subject to the following conditions & parameters:**

- 1) This is a quote setting out the proposed price at which INA Alert is prepared to supply the products and services described herein. It is not intended to create a legally binding contract.
- 2) Price may include an approximation of local sales tax. Actual taxes and duties may be different than the estimate referenced herein.
- 3) Price may include an approximation of shipping charges. Actual shipping charges may be different than the estimate referenced herein.
- 4) Upon acceptance of monthly payment terms, customer will be provided ACH payment sheet to be filled out and returned to INA Alert. Monthly payments will begin on the first Monday of each month following the acceptance of the quote.

- 5) Upon acceptance of this quote, the project is subject to progress billing based on equipment and service(s) delivered to the customer.
- 6) The owner accepts all responsibility for installing equipment that is quoted to be shipped directly to the facility without installation. If INA Alert technician must be scheduled to come on-site, normal billing rates will be applied.
- 7) INA Alert assumes all existing equipment is in working order. Additional costs will apply if any existing equipment needs to be replaced.
- 8) INA Alert assumes the internet and phone lines necessary for new equipment has been installed and is in functional condition. If this is not the case, additional costs and install time may apply.
- 9) 50% of proposal due upon approval, remaining balance due upon completion\*. (Sales Tax added to final invoice if applicable)
- 10) \*If project is extended past one month from start date, then progress beyond 50% will be billed monthly on the 20th of the month until completion. Remain balance will be due upon completion.
- 11) In the event that the job requires the use of a lift, the responsibility is placed upon the customer to cover the financial costs associated with the rental of the lift equipment.
- 12) Accounts not paid in full within 30 days of the billing date on the final or monthly invoice will incur a 3% service charge, calculated on the outstanding balance before applying current payments or credits shown on the monthly statement.

Bid For: Gering Public Schools - Tech - Maintenance Buildings  
 POC: Richard Evans - revans@geringschools.net  
 1905 7th St, Gering, NE 69341



Technology Products and Service

PO BOX 96  
 112 N Main  
 Ellinwood, KS 67526

2/16/2026 Quote #12314-26

Cameras & Accessories				
QTY	MODEL NAME	DESCRIPTION	UNIT COST	LINE TOTAL
4	5.0C-H6SL-DO1-IR-30	5MP H6SL Outdoor IR Dome Camera with 3.4-10.5mm lens; Alta 30 Day	\$ 849.29	\$ 3,397.16
2	10.0C-H6ADH-DO1-IR-30	2x 5MP H6A Dual Head Camera. Outdoor camera with built-in IR; Alta 30 Day	\$ 1,427.86	\$ 2,855.72
2	NPTA-1201	1.5 inch NPT Adapter for Dual Head Cameras	\$ 52.50	\$ 105.00
2	WLMT-1021	Mount, Pendant Arm, 20cm Long, 1.5 NPT	\$ 78.75	\$ 157.50
1	BULLET-TE-W	Ava Bullet Tele White - 4K	\$ 1,156.43	\$ 1,156.43
1	5.0C-H6SL-D1-IR-30	5MP H6SL Indoor IR Dome Camera with 3.4-10.5mm lens; Alta 30 Day	\$ 706.43	\$ 706.43

Storage & Software				
QTY	MODEL NAME	DESCRIPTION	UNIT COST	LINE TOTAL
7	AWA-CLD-5Y	Alta Aware License 5 years	\$ 649.00	\$ 4,543.00

Custom Line Items				
QTY	MODEL NAME	DESCRIPTION	UNIT COST	LINE TOTAL
400	Indoor Cable	Cat6 Blue Indoor Cable #77-240-2A - 23-4P UTP-CMR SOL BC CAT6 THERMOPLASTIC/FRPVC SERIES 77 BLUE POP BOX	\$ 0.43	\$ 172.00
1	Installation	Hardware Installation & Software Configuration	\$ 3,040.00	\$ 3,040.00
1	Miscellaneous	Misc: Connectors, Mounting Brackets, Clips, Etc	\$ 250.00	\$ 250.00

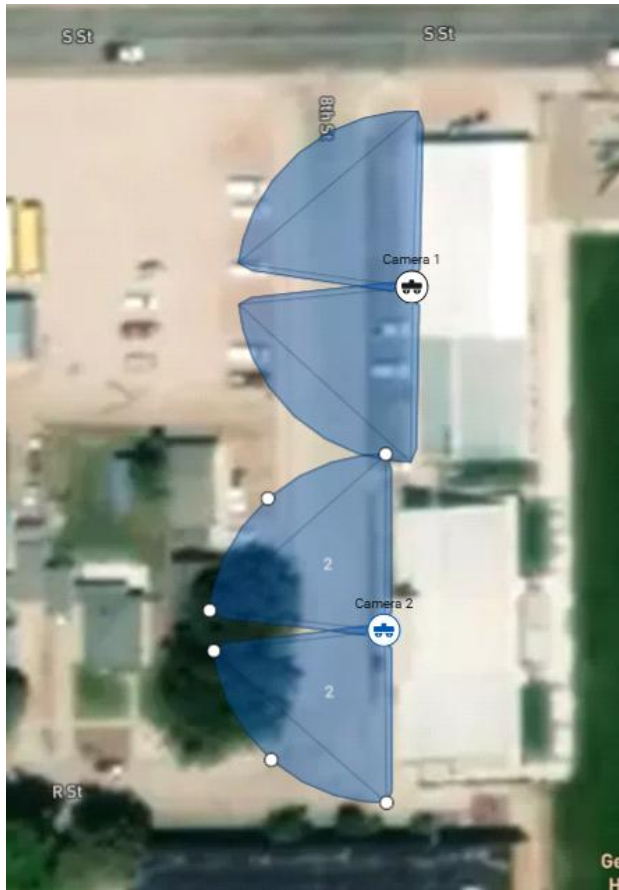
**Scope Of Work:**

This proposal includes the necessary hardware, software, and labor to install six (6) new Avigilon Alta Cloud-based cameras at the Gering Public Schools Technology and Maintenance Buildings. These devices will provide a centralized, cloud-based video management platform consistent with the district's broader Alta deployment.

Cameras will utilize existing structured cabling where available, with new cabling installed as required and connected to the buildings' existing PoE network switches. The deployment includes the following breakdown:

- Exterior Cameras: 2
- Interior Cameras: 4

INA Alert technicians will perform installation, configuration, and system commissioning in coordination with the district's designated point of contact. Training on the Avigilon Alta system will be provided upon project completion. Any changes to camera quantities, placement, or scope of work may result in an adjustment to the final project price.



Quotation Prepared By:

**INA** alert

Sales@INAalert.com

620.566.3050

Quotation and Pricing Valid for 30 Days.

Not Valid After 3/18/2026

Project Designed By: Jordon Smith

Initial:

Currency: USD

Subtotal	\$ 16,383.24
Shipping & Handling	
Sales Tax %	
<b>Total</b>	<b>\$ 16,383.24</b>

**Payment Options**

One-Time Payment	\$ 16,383.24
------------------	--------------

Ask about our financing options

To accept this quotation, sign here and return:

Approved By: \_\_\_\_\_

Approval Date: \_\_\_\_\_

INA Alert, Inc.  
Representative: \_\_\_\_\_

Approval Date: \_\_\_\_\_

**This quote is subject to the following conditions & parameters:**

- 1) This is a quote setting out the proposed price at which INA Alert is prepared to supply the products and services described herein. It is not intended to create a legally binding contract.
- 2) Price may include an approximation of local sales tax. Actual taxes and duties may be different than the estimate referenced herein.
- 3) Price may include an approximation of shipping charges. Actual shipping charges may be different than the estimate referenced herein.

- 4) Upon acceptance of monthly payment terms, customer will be provided ACH payment sheet to be filled out and returned to INA Alert. Monthly payments will begin on the first Monday of each month following the acceptance of the quote.
- 5) Upon acceptance of this quote, the project is subject to progress billing based on equipment and service(s) delivered to the customer.
- 6) The owner accepts all responsibility for installing equipment that is quoted to be shipped directly to the facility without installation. If INA Alert technician must be scheduled to come on-site, normal billing rates will be applied.
- 7) INA Alert assumes all existing equipment is in working order. Additional costs will apply if any existing equipment needs to be replaced.
- 8) INA Alert assumes the internet and phone lines necessary for new equipment has been installed and is in functional condition. If this is not the case, additional costs and install time may apply.
- 9) 50% of proposal due upon approval, remaining balance due upon completion\*. (Sales Tax added to final invoice if applicable)
- 10) \*If project is extended past one month from start date, then progress beyond 50% will be billed monthly on the 20th of the month until completion. Remain balance will be due upon completion.
- 11) In the event that the job requires the use of a lift, the responsibility is placed upon the customer to cover the financial costs associated with the rental of the lift equipment.
- 12) Accounts not paid in full within 30 days of the billing date on the final or monthly invoice will incur a 3% service charge, calculated on the outstanding balance before applying current payments or credits shown on the monthly statement.

**Bid For: Gering Public Schools - Tech - Maintenance Buildings**  
**POC: Richard Evans - revans@geringschools.net**  
**1905 7th St, Gering, NE 69341**



**Technology Products and Service**

**PO BOX 96**  
**112 N Main**  
**Ellinwood, KS 67526**

2/16/2026 Quote #12315-26

<b>Access Control Hardware</b>				
QTY	MODEL NAME	DESCRIPTION	UNIT COST	LINE TOTAL
2	SYS-4ENT-DVE1	Core Series 4 port 12/24V Smart Hub, 4 entry capacity Power supply: FPV series, E1 enclosure	\$ 1,483.33	\$ 2,966.66
2	ACTUVATE   SLA127	Rechargeable Sealed Lead Acid Batteries 12V Sealed Battery for LSP Box	\$ 26.91	\$ 53.82
4	OP-R2X-MULL	Mullion Smart Reader V2, black, low and high frequency version	\$ 229.17	\$ 916.68
2	AC-ALTA-SCH-NDE-CUSTOM	The Schlage® NDE wireless cylindrical lock is designed to affordably extend electronic access control deeper into the building beyond traditional perimeter and high security openings.	\$ 1,167.50	\$ 2,335.00

<b>Storage &amp; Software</b>				
QTY	MODEL NAME	DESCRIPTION	UNIT COST	LINE TOTAL
1	SW-PRM-P1-5Y	Premium: Pack of 1 entry (5 Years)	\$ 1,250.00	\$ 1,250.00
1	SW-PRM-P5-5Y	Premium: Pack of 5 entries (5 Years)	\$ 4,500.00	\$ 4,500.00

<b>Custom Line Items</b>				
QTY	MODEL NAME	DESCRIPTION	UNIT COST	LINE TOTAL
800	Access Control Cable	All in One Access Control Cable	\$ 1.05	\$ 840.00
1	Installation	Hardware Installation & Software Configuration	\$ 9,120.00	\$ 9,120.00
1	Miscellaneous	Misc: Connectors, Mounting Brackets, Clips, Etc	\$ 1,250.00	\$ 1,250.00

**Scope Of Work:**

This proposal includes the necessary hardware, software, and labor to install six (6) new access-controlled doors between the Technology Building and the Maintenance Shop. Four (4) doors will be installed at the Technology Building, including two (2) wireless interior doors serving the server room and two (2) exterior entrance doors. The Maintenance Shop will receive the remaining two (2) access-controlled doors.

This project includes Avigilon Alta Access licenses for a five (5) year term. Final door configurations and access permissions will be coordinated with the Gering Public Schools IT Department prior to system commissioning. Any changes to the scope of work or required hardware may result in an adjustment to the final project price.

Quotation Prepared By:



Sales@INAalert.com  
 620.566.3050

	Initial:	_____
	Currency: USD	_____
Subtotal	\$	23,232.16
Shipping & Handling		_____
Sales Tax %		_____
<b>Total</b>	<b>\$</b>	<b>23,232.16</b>

Quotation and Pricing Valid for 30 Days.

Not Valid After 3/18/2026

Project Designed By: Jordon Smith

**Payment Options**

One-Time Payment \$ 23,232.16

or 3 - Year Payment Plan

Please Indicate: Accept:  Decline:  \$ 8,941.75

To accept this quotation, sign here and return:

Approved By: \_\_\_\_\_

Approval Date: \_\_\_\_\_

INA Alert, Inc.  
Representative: \_\_\_\_\_

Approval Date: \_\_\_\_\_

**This quote is subject to the following conditions & parameters:**

- 1) This is a quote setting out the proposed price at which INA Alert is prepared to supply the products and services described herein. It is not intended to create a legally binding contract.
- 2) Price may include an approximation of local sales tax. Actual taxes and duties may be different than the estimate referenced herein.
- 3) Price may include an approximation of shipping charges. Actual shipping charges may be different than the estimate referenced herein.
- 4) Upon acceptance of monthly payment terms, customer will be provided ACH payment sheet to be filled out and returned to INA Alert. Monthly payments will begin on the first Monday of each month following the acceptance of the quote.
- 5) Upon acceptance of this quote, the project is subject to progress billing based on equipment and service(s) delivered to the customer.
- 6) The owner accepts all responsibility for installing equipment that is quoted to be shipped directly to the facility without installation. If INA Alert technician must be scheduled to come on-site, normal billing rates will be applied.
- 7) INA Alert assumes all existing equipment is in working order. Additional costs will apply if any existing equipment needs to be replaced.
- 8) INA Alert assumes the internet and phone lines necessary for new equipment has been installed and is in functional condition. If this is not the case, additional costs and install time may apply.
- 9) 50% of proposal due upon approval, remaining balance due upon completion\*. (Sales Tax added to final invoice if applicable)
- 10) \*If project is extended past one month from start date, then progress beyond 50% will be billed monthly on the 20th of the month until completion. Remain balance will be due upon completion.
- 11) In the event that the job requires the use of a lift, the responsibility is placed upon the customer to cover the financial costs associated with the rental of the lift equipment.
- 12) Accounts not paid in full within 30 days of the billing date on the final or monthly invoice will incur a 3% service charge, calculated on the outstanding balance before applying current payments or credits shown on the monthly statement.

Bid For: Gering Public Schools  
 POC: Richard Evans - revans@geringschools.net  
 1500 U St, Gering, NE 69341



Technology Products and Service

PO BOX 96  
 112 N Main  
 Ellinwood, KS 67526

2/16/2026 Quote #11583-25

Cameras & Accessories				
QTY	MODEL NAME	DESCRIPTION	UNIT COST	LINE TOTAL
3	ARMINGSTATION-PRO	Arming Station Pro	\$ 582.50	\$ 1,747.50
25	DT-SC	DT Cloud Connector	\$ 831.44	\$ 20,786.00

3	DT-SEN-TACTOUCH	Wireless Tactile Touch Sensor transmitting a message every time it is touched. Heartbeat indicating active status every 15 minutes. Requires a nearby Sensor Connector and an active license.	\$ 119.95	\$ 359.85
265	DOORANDWINDOW	Wireless Door & Window Sensor	\$ 102.50	\$ 27,162.50
34	HALO-V3.00C	HALO IoT Smart Sensor 3C	\$ 899.00	\$ 30,566.00

Storage & Software				
QTY	MODEL NAME	DESCRIPTION	UNIT COST	LINE TOTAL
1	PROT-SITE-5Y	Protect software license for one physical location, includes 15 cameras/sensors and 2 zones for 5 years	\$ 1,749.17	\$ 1,749.17
1	PROT-MON-SITE-5Y	Protect monitoring service, includes 25 verification events per month for 5 years, for one physical location	\$ 2,415.83	\$ 2,415.83
58	PROT-EXP-5Y	Protect expansion software license for 5 additional cameras/sensors and 1 additional zone for 5 years, for one physical location. Can be stacked, requires an active site license.	\$ 540.83	\$ 31,368.14
25	DT-LIC-SC-3Y	3 year DT cloud connector data subscription and integration into Aware.	\$ 138.89	\$ 3,472.25
265	DT-LIC-DOORANDWINDOW-3Y	3 years DT Alta Sensor Sub for 1 Sensor	\$ 93.33	\$ 24,732.45
34	HALO-LIC-CLOUD-5YR	5-year subscription, per Halo, to HALO Cloud and Alta Video. End user information required	\$ 547.50	\$ 18,615.00
1	DT-LIC-TACTOUCH-3Y	3 year DT and Aware Tactile Touch Button sensor subscription for 1 sensor. License only, no software.	\$ 105.61	\$ 105.61

Custom Line Items				
QTY	MODEL NAME	DESCRIPTION	UNIT COST	LINE TOTAL
3000	Plenum Cable	Cat6 Indoor Plenum Cable #66-246-2B	\$ 0.47	\$ 1,410.00
1	Installation	Hardware Installation & Software Configuration	\$ 30,172.00	\$ 30,172.00
1	Miscellaneous	Misc: Connectors, Mounting Brackets, Clips, Etc	\$ 1,500.00	\$ 1,500.00

Scope Of Work:

Included in this proposal is the necessary hardware and software to implement Avigilon Alta Protect for Gering High School. This system will focus on providing wireless door and window sensors throughout critical areas of the building to enhance perimeter awareness and intrusion detection. Additionally, one (1) wireless panic button will be provided for emergency activation, instantly alerting district staff and triggering monitoring notifications through the Alta cloud interface. Cameras integrated under the Alta Video platform will also assist in after-hours monitoring and event verification. INA Alert technicians will work with school administration to finalize sensor placement and alert procedures prior to completion.

Quotation Prepared By:



Sales@INAalert.com

620.566.3050

Quotation and Pricing Valid for 30 Days.

Not Valid After 3/18/2026

Project Designed By: Jordon Smith

Initial: \_\_\_\_\_

Currency: USD

Subtotal	\$ 196,162.30
Shipping & Handling	
Sales Tax %	
<b>Total</b>	<b>\$ 196,162.30</b>

**Payment Options**

One-Time Payment	\$ 196,162.30
or 5 - Year Payment Plan	
Please Indicate: <input type="checkbox"/> Accept: <input type="checkbox"/> Decline: <input type="checkbox"/>	\$ 48,548.82

To accept this quotation, sign here and return:

Approved By: \_\_\_\_\_

Approval Date: \_\_\_\_\_

INA Alert, Inc.  
Representative: \_\_\_\_\_

Approval Date: \_\_\_\_\_

**This quote is subject to the following conditions & parameters:**

- 1) This is a quote setting out the proposed price at which INA Alert is prepared to supply the products and services described herein. It is not intended to create a legally binding contract.
- 2) Price may include an approximation of local sales tax. Actual taxes and duties may be different than the estimate referenced herein.
- 3) Price may include an approximation of shipping charges. Actual shipping charges may be different than the estimate referenced herein.
- 4) Upon acceptance of monthly payment terms, customer will be provided ACH payment sheet to be filled out and returned to INA Alert. Monthly payments will begin on the first Monday of each month following the acceptance of the quote.
- 5) Upon acceptance of this quote, the project is subject to progress billing based on equipment and service(s) delivered to the customer.
- 6) The owner accepts all responsibility for installing equipment that is quoted to be shipped directly to the facility without installation. If INA Alert technician must be scheduled to come on-site, normal billing rates will be applied.
- 7) INA Alert assumes all existing equipment is in working order. Additional costs will apply if any existing equipment needs to be replaced.
- 8) INA Alert assumes the internet and phone lines necessary for new equipment has been installed and is in functional condition. If this is not the case, additional costs and install time may apply.
- 9) 50% of proposal due upon approval, remaining balance due upon completion\*. (Sales Tax added to final invoice if applicable)
- 10) \*If project is extended past one month from start date, then progress beyond 50% will be billed monthly on the 20th of the month until completion. Remain balance will be due upon completion.

- 11) In the event that the job requires the use of a lift, the responsibility is placed upon the customer to cover the financial costs associated with the rental of the lift equipment.
- 12) Accounts not paid in full within 30 days of the billing date on the final or monthly invoice will incur a 3% service charge, calculated on the outstanding balance before applying current payments or credits shown on the monthly statement.

Bid For: Gering Public Schools - Tech - Maintenance Buildings  
 POC: Richard Evans - revans@geringschools.net  
 1905 7th St, Gering, NE 69341



Technology Products and Service

PO BOX 96  
 112 N Main  
 Ellinwood, KS 67526

2/16/2026 Quote #12314-26

Cameras & Accessories				
QTY	MODEL NAME	DESCRIPTION	UNIT COST	LINE TOTAL
4	5.0C-H6SL-DO1-IR-30	5MP H6SL Outdoor IR Dome Camera with 3.4-10.5mm lens; Alta 30 Day	\$ 849.29	\$ 3,397.16
2	10.0C-H6ADH-DO1-IR-30	2x 5MP H6A Dual Head Camera. Outdoor camera with built-in IR; Alta 30 Day	\$ 1,427.86	\$ 2,855.72
2	NPTA-1201	1.5 inch NPT Adapter for Dual Head Cameras	\$ 52.50	\$ 105.00
2	WLMT-1021	Mount, Pendant Arm, 20cm Long, 1.5 NPT	\$ 78.75	\$ 157.50
1	BULLET-TE-W	Ava Bullet Tele White - 4K	\$ 1,156.43	\$ 1,156.43
1	5.0C-H6SL-D1-IR-30	5MP H6SL Indoor IR Dome Camera with 3.4-10.5mm lens; Alta 30 Day	\$ 706.43	\$ 706.43

Storage & Software				
QTY	MODEL NAME	DESCRIPTION	UNIT COST	LINE TOTAL
7	AWA-CLD-5Y	Alta Aware License 5 years	\$ 649.00	\$ 4,543.00

Custom Line Items				
QTY	MODEL NAME	DESCRIPTION	UNIT COST	LINE TOTAL
400	Indoor Cable	Cat6 Blue Indoor Cable #77-240-2A - 23-4P UTP-CMR SOL BC CAT6 THERMOPLASTIC/FRPVC SERIES 77 BLUE POP BOX	\$ 0.43	\$ 172.00
1	Installation	Hardware Installation & Software Configuration	\$ 3,040.00	\$ 3,040.00
1	Miscellaneous	Misc: Connectors, Mounting Brackets, Clips, Etc	\$ 250.00	\$ 250.00

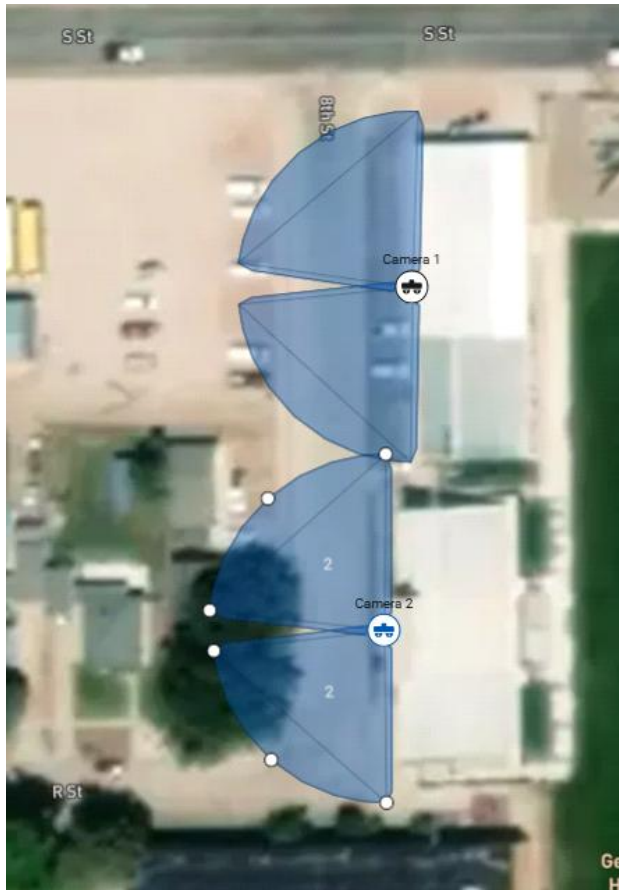
**Scope Of Work:**

This proposal includes the necessary hardware, software, and labor to install six (6) new Avigilon Alta Cloud-based cameras at the Gering Public Schools Technology and Maintenance Buildings. These devices will provide a centralized, cloud-based video management platform consistent with the district's broader Alta deployment.

Cameras will utilize existing structured cabling where available, with new cabling installed as required and connected to the buildings' existing PoE network switches. The deployment includes the following breakdown:

- Exterior Cameras: 2
- Interior Cameras: 4

INA Alert technicians will perform installation, configuration, and system commissioning in coordination with the district's designated point of contact. Training on the Avigilon Alta system will be provided upon project completion. Any changes to camera quantities, placement, or scope of work may result in an adjustment to the final project price.



Quotation Prepared By:

**INAalert**  
 Sales@INAalert.com  
 620.566.3050

Quotation and Pricing Valid for 30 Days.

Not Valid After 3/18/2026

Project Designed By: Jordon Smith

Initial:

Currency: USD

Subtotal	\$ 16,383.24
Shipping & Handling	
Sales Tax %	
<b>Total</b>	<b>\$ 16,383.24</b>

**Payment Options**

One-Time Payment	\$ 16,383.24
------------------	--------------

[Ask about our financing options](#)

To accept this quotation, sign here and return:

Approved By: \_\_\_\_\_

Approval Date: \_\_\_\_\_

INA Alert, Inc.  
 Representative: \_\_\_\_\_

Approval Date: \_\_\_\_\_

**This quote is subject to the following conditions & parameters:**

- 1) This is a quote setting out the proposed price at which INA Alert is prepared to supply the products and services described herein. It is not intended to create a legally binding contract.
- 2) Price may include an approximation of local sales tax. Actual taxes and duties may be different than the estimate referenced herein.
- 3) Price may include an approximation of shipping charges. Actual shipping charges may be different than the estimate referenced herein.

- 4) Upon acceptance of monthly payment terms, customer will be provided ACH payment sheet to be filled out and returned to INA Alert. Monthly payments will begin on the first Monday of each month following the acceptance of the quote.
- 5) Upon acceptance of this quote, the project is subject to progress billing based on equipment and service(s) delivered to the customer.
- 6) The owner accepts all responsibility for installing equipment that is quoted to be shipped directly to the facility without installation. If INA Alert technician must be scheduled to come on-site, normal billing rates will be applied.
- 7) INA Alert assumes all existing equipment is in working order. Additional costs will apply if any existing equipment needs to be replaced.
- 8) INA Alert assumes the internet and phone lines necessary for new equipment has been installed and is in functional condition. If this is not the case, additional costs and install time may apply.
- 9) 50% of proposal due upon approval, remaining balance due upon completion\*. (Sales Tax added to final invoice if applicable)
- 10) \*If project is extended past one month from start date, then progress beyond 50% will be billed monthly on the 20th of the month until completion. Remain balance will be due upon completion.
- 11) In the event that the job requires the use of a lift, the responsibility is placed upon the customer to cover the financial costs associated with the rental of the lift equipment.
- 12) Accounts not paid in full within 30 days of the billing date on the final or monthly invoice will incur a 3% service charge, calculated on the outstanding balance before applying current payments or credits shown on the monthly statement.

Bid For: Gering Public Schools - District Office  
 POC: Richard Evans - revans@geringschools.net  
 1905 7th St, Gering, NE 69341



Technology Products and Service

PO BOX 96  
 112 N Main  
 Ellinwood, KS 67526

2/16/2026 Quote #12381-26

Access Control Hardware				
QTY	MODEL NAME	DESCRIPTION	UNIT COST	LINE TOTAL
1	SYS-4ENT-DVE1	Core Series 4 port 12/24V Smart Hub, 4 entry capacity Power supply: FPV series, E1 enclosure	\$ 1,483.33	\$ 1,483.33
2	ACTUVATE   SLA127	Rechargeable Sealed Lead Acid Batteries 12V Sealed Battery for LSP Box	\$ 26.91	\$ 53.82
1	OP-R2X-MULL	Mullion Smart Reader V2, black, low and high frequency version	\$ 229.17	\$ 229.17
1	OP-R2X-STND	Standard Smart Reader V2, black, low and high frequency version	\$ 229.17	\$ 229.17
1	OP-VID-PRO-INT	The Openpath Video Intercom Reader Pro combines a built-in high resolution camera, intelligent intercom, and multi-technology reader into a slim and sleek form factor	\$ 833.33	\$ 833.33
1	HES 8000C	HES 8000C Electric Strike	\$ 189.15	\$ 189.15
1	8080-TWG-W	Door Position Sensor, White	\$ 8.28	\$ 8.28

Storage & Software				
QTY	MODEL NAME	DESCRIPTION	UNIT COST	LINE TOTAL
2	SW-PRM-P1-5Y	Premium: Pack of 1 entry (5 Years)	\$ 1,250.00	\$ 2,500.00
1	SW-INTC-PRM-5Y	(License V2) Intercom Device License - Premium (5 Years)	\$ 1,500.00	\$ 1,500.00

Custom Line Items				
QTY	MODEL NAME	DESCRIPTION	UNIT COST	LINE TOTAL
800	Access Control Cable	All in One Access Control Cable	\$ 1.05	\$ 840.00
1	Installation	Hardware Installation & Software Configuration	\$ 4,560.00	\$ 4,560.00
1	Miscellaneous	Misc: Connectors, Mounting Brackets, Clips, Etc	\$ 750.00	\$ 750.00

Scope Of Work:

This proposal includes the necessary hardware, software, and labor to provide Avigilon Alta Access Control at the District Office. The scope includes the takeover of two (2) existing access-controlled doors, one (1) of which is equipped with an intercom, and the addition of one (1) new access-controlled door.

The existing intercom-equipped door will be maintained and integrated into the Avigilon Alta Access system, while the new door will be outfitted with the required access control hardware to match district standards. Avigilon Alta Access licenses for a five (5) year term are included with this project.

INA Alert technicians will coordinate final door configuration, access permissions, and system commissioning with the Gering Public Schools IT Department. Any changes to door quantities, hardware requirements, or scope of work may result in an adjustment to the final project price.

Quotation Prepared By:



Initial: \_\_\_\_\_

Currency: USD

Subtotal \$ 13,176.25



Sales@INAalert.com

620.566.3050

Quotation and Pricing Valid for 30 Days.

Not Valid After 3/18/2026

Project Designed By: Jordon Smith

Shipping & Handling	
Sales Tax %	
Total	\$ 13,176.25

**Payment Options**

One-Time Payment	\$ 13,176.25
------------------	--------------

**Ask about our financing options**

To accept this quotation, sign here and return:

Approved By: \_\_\_\_\_

Approval Date: \_\_\_\_\_

INA Alert, Inc.  
Representative: \_\_\_\_\_

Approval Date: \_\_\_\_\_

**This quote is subject to the following conditions & parameters:**

- 1) This is a quote setting out the proposed price at which INA Alert is prepared to supply the products and services described herein. It is not intended to create a legally binding contract.
- 2) Price may include an approximation of local sales tax. Actual taxes and duties may be different than the estimate referenced herein.
- 3) Price may include an approximation of shipping charges. Actual shipping charges may be different than the estimate referenced herein.
- 4) Upon acceptance of monthly payment terms, customer will be provided ACH payment sheet to be filled out and returned to INA Alert. Monthly payments will begin on the first Monday of each month following the acceptance of the quote.
- 5) Upon acceptance of this quote, the project is subject to progress billing based on equipment and service(s) delivered to the customer.
- 6) The owner accepts all responsibility for installing equipment that is quoted to be shipped directly to the facility without installation. If INA Alert technician must be scheduled to come on-site, normal billing rates will be applied.
- 7) INA Alert assumes all existing equipment is in working order. Additional costs will apply if any existing equipment needs to be replaced.
- 8) INA Alert assumes the internet and phone lines necessary for new equipment has been installed and is in functional condition. If this is not the case, additional costs and install time may apply.
- 9) 50% of proposal due upon approval, remaining balance due upon completion\*. (Sales Tax added to final invoice if applicable)
- 10) \*If project is extended past one month from start date, then progress beyond 50% will be billed monthly on the 20th of the month until completion. Remain balance will be due upon completion.
- 11) In the event that the job requires the use of a lift, the responsibility is placed upon the customer to cover the financial costs associated with the rental of the lift equipment.
- 12) Accounts not paid in full within 30 days of the billing date on the final or monthly invoice will incur a 3% service charge, calculated on the outstanding balance before applying current payments or credits shown on the monthly statement.