

Regular Meeting

Mission: "Engaging All Learners to Achieve Success"

The Regular Meeting started at 5:30 PM on Monday, February 16, 2026. The meeting was held at Kramer Education Center
2410 16th Street, Suite A
Columbus, NE 68601

Candace Becher: Present

Michael Jeffryes: Present

Doug Molczyk: Present

Theresa Seipel: Present

Douglas Willoughby: Absent

Marv Zoucha: Absent

I. CALL TO ORDER

II. ROLL CALL OF THE BOARD

III. EXCUSE BOARD MEMBERS

Motion to excuse Doug Willoughby and Marv Zoucha. Passed with a motion by Michael Jeffryes and a second by Candace Becher.

Candace Becher: Yea, Michael Jeffryes: Yea, Doug Molczyk: Yea, Theresa Seipel: Yea

IV. PLEDGE OF ALLEGIANCE

V. MEETING COMPLIANCE

V.A. DISTRICT MISSION STATEMENT

V.B. OPEN MEETINGS ACT

V.B.1. President ensures all can hear proceedings

V.C. PUBLICATION OF MEETING NOTICE

VI. PUBLIC COMMENT

VII. GUEST PRESENTATIONS

VII.A. ESU 7 Presentation-Marci Ostmeyer and Jack Young

Marci Ostmeyer, ESU 7 Administrator, and Jack Young, ESU 7 Board Member, presented information about ESU 7. Ms. Ostmeyer said the ESU 7 structure is very similar to a school district. She shared the services that are provided and the services CPS utilizes. Ms. Ostmeyer said they serve 19 member districts and 20 nonmember districts.

VIII. RECOGNITIONS BY BOARD

IX. BUILDING OR DISTRICT PRESENTATION

X. CONSENT AGENDA

Motion to approve the consent agenda Passed with a motion by Theresa Seipel and a second by Candace Becher.

Candace Becher: Yea, Michael Jeffryes: Yea, Doug Molczyk: Yea, Theresa Seipel: Yea

X.A. Items to be removed from the Consent Agenda

There were no items removed from the Consent Agenda.

X.B. Meeting Minutes

X.C. Finance Reports

Jason Schapmann, Director of Human Resources and Fiscal Support, reported on payments listed, including Loup Power and Journeyed.com, Inc.

X.D. Staffing Reports

Mr. Schapmann reported that a science teacher has been hired for CHS, Michelle Oppliger was hired for the CHS Assistant Principal position. He also noted two resignations.

X.E. Professional Travel

XI. FOUNDATION REPORT

The Superintendent recommends that the board approve the Foundation Report, as submitted. Passed with a motion by Candace Becher and a second by Theresa Seipel.

Candace Becher: Yea, Michael Jeffryes: Yea, Doug Molczyk: Yea, Theresa Seipel: Yea

XII. DIRECTOR & SUPERINTENDENTS REPORTS OR UPDATES

XII.A. Director of Teaching and Learning

XII.B. Director of Special Education

XII.C. Assistant Director for Student Services

XII.D. Director of Human Resources

XII.E. Director of Operations

XII.F. Superintendent

Chip Kay, Superintendent shared information about LB765, and the third grade reading bill. Dr. Kay also mentioned the process of starting organizations in the district. He reported on the conference he attended, a lot of AI information was shared. Dr. Kay gave a summary of upcoming trainings and events.

XIII. MONTHLY REVIEW OF POLICIES

Dr. Kay along with CHS Principal Dave Hiebner, reviewed the Student Activism Policy. They shared a proposed new regulation to adopt.

XIV. DISCUSSION ITEMS

XV. ACTION ITEMS FOR THIS MEETING

XV.A. Surplus Requests

Motion to approve the Surplus Requests. Passed with a motion by Candace Becher and a second by Doug Molczyk.

Candace Becher: Yea, Michael Jeffryes: Yea, Doug Molczyk: Yea, Theresa Seipel: Yea

XV.B. CMS Course Handbook 2026-2027

Motion to approve the CMS Course Handbook for 2026-2027. Passed with a motion by Theresa Seipel and a second by Candace Becher.

Candace Becher: Yea, Michael Jeffryes: Yea, Doug Molczyk: Yea, Theresa Seipel: Yea

XV.C. Preschool Schedule and Instructional Enhancement Proposal

Motion to approve the Preschool Schedule and Instructional Enhancement Proposal. Passed with a motion by Candace Becher and a second by Doug Molczyk.

Candace Becher: Yea, Michael Jeffryes: Yea, Doug Molczyk: Yea, Theresa Seipel: Yea

Dr. Kay gave updated information on the proposed preschool schedule change.

XV.D. Resolution on Superintendent Outside Employment

Motion to approve Superintendent's outside employment Passed with a motion by Theresa Seipel and a second by Michael Jeffryes.

Candace Becher: Yea, Michael Jeffryes: Yea, Doug Molczyk: Yea, Theresa Seipel: Yea

XV.E. Fundraising Applications

Motion to approve the Fundraising Applications. Passed with a motion by Theresa Seipel and a second by Michael Jeffryes.

Candace Becher: Yea, Michael Jeffryes: Yea, Doug Molczyk: Yea, Theresa Seipel: Yea

Mr. Schapmann talked about the Runza/Sonic night for preschool. They will use the funds for classroom activities.

XV.F. Participation Request: Non-Public School Student

Motion to approve the Participation Request of a Non-Public School Student. Passed with a motion by Theresa Seipel and a second by Candace Becher.

Candace Becher: Yea, Michael Jeffryes: Yea, Doug Molczyk: Yea, Theresa Seipel: Yea

Dr. Kay said that home school or parochial students that live within our district can request to participate in our organizations. High school students are required to take 5 credits, middle school students do not have any requirements.

XV.G. Non-Traditional Learning and Support Center Furniture Bid

Motion to approve the Non-Traditional Learning and Support Center Furniture Bid. Passed with a motion by Candace Becher and a second by Michael Jeffryes.

Candace Becher: Yea, Michael Jeffryes: Yea, Doug Molczyk: Yea, Theresa Seipel: Yea

Leonard Kwapnioski, Director of Operations, shared the bids for the Non-traditional Learning and Support Center furniture. He said this is a decrease from the original budget.

XVI. BOARD REQUESTS FOR INFORMATION

XVII. BOARD SHARING

XVIII. EXECUTIVE SESSION

The board did not go into Executive Session.

XIX. ADJOURN

Motion to adjourn Passed with a motion by Theresa Seipel and a second by Candace Becher.

Candace Becher: Yea, Michael Jeffryes: Yea, Doug Molczyk: Yea, Theresa Seipel: Yea

The meeting was adjourned at 6:38pm.

I, the undersigned, being the duly qualified Secretary for the School District No. 1 of Columbus, Nebraska, certify that the preceding is a true and correct copy of the minutes of the Regular School Board meeting of Monday, February 16, 2026.

President

Secretary

COMMITTEE AS A WHOLE

BOARD OF EDUCATION MEETING MINUTES

Mission: "Engaging All Learners to Achieve Success"

Monday, January 12, 2026 | 5:30 PM

Kramer Education Center
2410 16th Street, Suite A, Columbus, NE 68601

I. CALL TO ORDER

II. ROLL CALL OF THE BOARD

Board Member	Attendance
Candace Becher	Present
Michael Jeffryes	Present
Doug Molczyk	Present
Theresa Seipel	Present
Douglas Willoughby	Present
Marv Zoucha	Present

IV. PLEDGE OF ALLEGIANCE

V. MEETING COMPLIANCE

V.A. District Mission Statement

V.B. Open Meetings Act

President ensures all can hear proceedings.

V.C. Publication of Meeting Notice

VI. AMERICANISM COMMITTEE MEETING

Motion to open Americanism Committee Meeting Passed 6-0 with a motion by Doug Molczyk and a second by Marv Zoucha.

Nathan Coan and Zack Wayman, American History teachers at CHS, shared information about the Federal Government Day they facilitated for CHS students. Congressman Flood and Kim Kwapnioski were instrumental in scheduling representatives to speak at the event. Representatives from the National Weather Service, the Small Business Administration, Federal District Court, the FBI, Veterans Affairs, and the Census Bureau participated. All presentations were created specifically for the students. The event was very well received, and students were highly engaged. Mr. Coan and Mr. Wayman noted that Mr. Hiebner, CHS Principal, provided tremendous support in coordinating this event.

Motion to Re-Enter the Regular Board Meeting Passed 6-0 with a motion by Michael Jeffryes and a second by Theresa Seipel.

VII. REORGANIZATION OF THE BOARD OF EDUCATION

VII.A. Appointments by the Board

VII.A.1. Appointment of Board of Education Standing Committees

Motion to appoint committees Passed 6-0 with a motion by Douglas Willoughby and a second by Candace Becher.

VII.A.2. Appointment of Authorized Representatives for State and Federal Programs

Motion to approve the authorized representatives in addition to the Superintendent to include: Jason Schapmann, Jason Harris, Leonard Kwapnioski, Sara Colford, and Teresa Hausmann for Federal Programs. Passed 6-0 with a motion by Candace Becher and a second by Theresa Seipel.

VII.A.3. Appointment of the Bus Mechanic for Bus Inspections

Motion to approve Dillon Thurman, Bus Mechanic for Bus Inspections. Passed 6-0 with a motion by Marv Zoucha and a second by Douglas Willoughby.

VII.A.4. Appointment of Non-Discrimination Compliance Coordinator

Motion to approve the Appointment of Chip Kay as the Non-Discrimination Compliance Coordinator. Passed 6-0 with a motion by Theresa Seipel and a second by Candace Becher.

VII.A.5. Appointment of Title IX Coordinators

Motion to approve the Appointment of Jason Schapmann and Tim Kwapnioski as the Title IX Coordinators. Passed 6-0 with a motion by Douglas Willoughby and a second by Theresa Seipel.

VII.A.6. Appointment of Treasurer

Motion to approve the Appointment of Jason Schapmann as the Board Treasurer. Passed 6-0 with a motion by Marv Zoucha and a second by Theresa Seipel.

VII.B. Sign and File NADC Form C-2A with the Board Secretary

VIII. PUBLIC COMMENT

XI. BUILDING OR DISTRICT PRESENTATION

XI.A. Columbus Middle School Presentation

Amy Haynes, CMS Principal, shared information about academic events, testing scores, and staff development at Columbus Middle School. The school has 1,162 students, 82 in-person teachers, and 7 virtual teachers. There are 71 classified support staff and 10 certified non-teacher staff. Mrs. Haynes shared progress on the CMS WIG and noted that their scoreboard is displayed outside the office so all students and staff can see the progress and work to be done. She discussed the pep rallies held at the end of each quarter to announce great achievements of students and staff.

XII. CONSENT AGENDA

Motion to approve Passed 6-0 with a motion by Candace Becher and a second by Marv Zoucha.

XII.A. Items to be removed from the Consent Agenda

Columbus Public Schools
Board of Education Meeting Minutes

XII.B. Meeting Minutes

XII.C. Finance Reports

XII.D. Staffing Reports

XII.E. Professional Travel

XIII. FOUNDATION REPORT

Motion to approve the Foundation Report, as submitted. Passed 6-0 with a motion by Theresa Seipel and a second by Candace Becher.

XIV. DIRECTOR & SUPERINTENDENT REPORTS OR UPDATES

XIV.A. Director of Teaching and Learning

Teresa Hausmann, Director of Teaching and Learning, gave an explanation of NSCAS Scale Scores and grading proficiency rates as compared to NSCAS proficiency rates.

XIV.B. Director of Special Education

Jason Harris, Director of Special Education, shared the Sixpence Snapshot Report for 2024-2025. Sixpence is a grant-based program that served 30 families in 2025. He discussed qualifying factors and additional stressors. The Sixpence staff conducts assessments for each family and assists with healthy and safe practices.

XIV.C. Assistant Director for Student Services

Sara Colford, Assistant Director of Student Services, discussed the Rule 17 Program. In the first semester, the program had 10 students, and nice progress is being observed.

XIV.D. Director of Human Resources

Mr. Schapmann discussed the RFP for a Food Service Company. A request for proposals will be issued, with the first draft due on Thursday.

XIV.E. Director of Operations

Leonard Kwapnioski, Director of Operations, reviewed the schedule of maintenance projects.

XIV.F. Superintendent

Chip Kay, Superintendent, shared a rough draft of the district implementation schedule for the Leader in Me and 4DX.

XVII. ACTION ITEMS FOR THIS MEETING

XVII.A. Approval of Financial Institutions

Motion to approve the financial institutions as submitted. Passed 6-0 with a motion by Doug Molczyk and a second by Douglas Willoughby.

Roll Call Vote: Candace Becher: Yea, Michael Jeffryes: Yea, Doug Molczyk: Yea, Theresa Seipel: Yea, Douglas Willoughby: Yea, Marv Zoucha: Yea

XVII.B. Approval of School Attorneys

Motion to approve the School Attorneys, as submitted. Passed 6-0 with a motion by Doug Molczyk and a second by Marv Zoucha.

Columbus Public Schools
Board of Education Meeting Minutes

Roll Call Vote: Candace Becher: Yea, Michael Jeffryes: Yea, Doug Molczyk: Yea, Theresa Seipel: Yea, Douglas Willoughby: Yea, Marv Zoucha: Yea

XVII.C. Approval of Media Outlets

Motion to approve Passed 6-0 with a motion by Doug Molczyk and a second by Douglas Willoughby.

Roll Call Vote: Candace Becher: Yea, Michael Jeffryes: Yea, Doug Molczyk: Yea, Theresa Seipel: Yea, Douglas Willoughby: Yea, Marv Zoucha: Yea

XVII.D. Discuss, Consider and Take Action on the TERIP Applications

Motion to approve the list of Media Outlets used by CPS. Passed 6-0 with a motion by Doug Molczyk and a second by Douglas Willoughby.

Motion to approve TERIP applications Passed 6-0 with a motion by Candace Becher and a second by Marv Zoucha.

Roll Call Vote: Candace Becher: Yea, Michael Jeffryes: Yea, Doug Molczyk: Yea, Theresa Seipel: Yea, Douglas Willoughby: Yea, Marv Zoucha: Yea

The TERIP memo was reviewed. Applicants have seven days to withdraw. The window for applying is over. Dr. Kay noted that 135 years of service are leaving the district.

XVII.E. Final Plat, City Development Agreement and Site Development Agreement

Discussion regarding possible approval and authorization to execute a final plat, city development agreement, and site development agreement for school district property near the intersection of 38th Street and 3rd Avenue, Columbus, Nebraska.

Motion to adopt the attached Resolution relating to a final plat, city development agreement and site development agreement for School District property near the intersection of 38th Street and 3rd Avenue, Columbus, Nebraska. Passed 6-0 with a motion by Doug Molczyk and a second by Douglas Willoughby.

Roll Call Vote: Candace Becher: Yea, Michael Jeffryes: Yea, Doug Molczyk: Yea, Theresa Seipel: Yea, Douglas Willoughby: Yea, Marv Zoucha: Yea

Dr. Kay explained that the resolution gives permission to agree upon the infrastructure that will go on the property.

XVII.F. Foundation Board Approval

Motion to approve the CPS Foundation Board Members. Passed 6-0 with a motion by Candace Becher and a second by Theresa Seipel.

Roll Call Vote: Candace Becher: Yea, Michael Jeffryes: Yea, Doug Molczyk: Yea, Theresa Seipel: Yea, Douglas Willoughby: Yea, Marv Zoucha: Yea

Mrs. Anderson explained that the CPS Foundation Board Bylaws require new board members to be approved by the school board. The new members to be added are Dennis Hirschbrunner and Dr. Troy Loeffelholz.

XVII.G. Surplus Request

Motion to approve the Surplus Requests, as submitted. Passed 6-0 with a motion by Douglas Willoughby and a second by Theresa Seipel.

XVII.H. CHS Course Handbook for 2026-2027

Motion to approve the CHS Course Handbook for 2026-2027, as submitted. Passed 6-0 with a motion by Theresa Seipel and a second by Candace Becher.

Columbus Public Schools
Board of Education Meeting Minutes

XVII.I. Proposed Positions for Non-Traditional Learning and Support Center

Discussion and action for adding proposed positions and FTE for the Non-Traditional Learning and Support Center for 2026-2027.

Motion to approve the proposed positions to add for the NTLSC. Passed 6-0 with a motion by Douglas Willoughby and a second by Doug Molczyk.

Dr. Kay shared the proposal for staffing and programming for the Non-Traditional Learning and Support Building.

XVII.J. First Reading of Policy 303.09 School Administrator Residency

Motion to approve the First Reading of Policy 303.09 School Administrator Residency, as submitted. Failed 2-4 with a motion by Marv Zoucha and a second by Michael Jeffries.

Roll Call Vote: Candace Becher: Nay, Doug Molczyk: Nay, Theresa Seipel: Nay, Marv Zoucha: Nay, Michael Jeffries: Yea, Douglas Willoughby: Yea

Motion to approve first reading of board policy 303.09 amended to include assistant principals in the group of administrators listed in policy. Passed 6-0 with a motion by Doug Molczyk and a second by Michael Jeffries.

Roll Call Vote: Candace Becher: Yea, Michael Jeffries: Yea, Doug Molczyk: Yea, Theresa Seipel: Yea, Douglas Willoughby: Yea, Marv Zoucha: Yea

Dr. Kay discussed Policy 303.09 School Administrator Residency. The Policy Committee has reviewed and made changes. This policy states administrators could live outside the district. There would be two additional ways to establish residency. The primary focus will still be to have administrators live in the district boundaries if possible.

XIX. BOARD SHARING

XIX.A. Notice of Cancellation

Notice of Cancellation of the scheduled January 19, 2026 School Board Meeting.

XX. EXECUTIVE SESSION

Motion to go into Executive Session at 8:55 pm to discuss legal guidance for certified negotiations. Passed 6-0 with a motion by Doug Molczyk and a second by Marv Zoucha.

Board President called the regular meeting back to session at 9:55 pm.

XXI. ADJOURN

Motion to adjourn at 9:56 pm. Passed 6-0 with a motion by Doug Molczyk and a second by Candace Becher.

CERTIFICATION

I, the undersigned, being the duly qualified Secretary for the School District No. 1 of Columbus, Nebraska, certify that the preceding is a true and correct copy of the minutes of the Regular School Board meeting of Monday, January 12, 2026.

President

Secretary

Columbus Public Schools
 Summary of Cash Balances
 January 31, 2026

1	DESCRIPTION	BEGINNING BALANCE	MONTH TO DATE RECEIPTS	MONTH TO DATE EXPENDITURES	END OF MONTH BALANCE	YTD BALANCE PRIOR YEAR
General Fund	Attachment M4a			\$ 4,405,936.81		
	Attachment M5 (prior Bd Mtg)			\$ 370,006.16		
	Transfer to GP ICS Savings		\$ -			
	Transfer from GP ICS Savings					
	Receipts GP checking		\$ 5,727,603.90			
	GENERAL FUND - GREAT PLAINS STATE BANK	\$ 7,702,575.06	\$ 5,727,603.90	\$ 4,775,942.97	\$ 8,654,235.99	\$ 6,728,896.39
	Transfer to GP Checking					
	Transfer from GP Checking		\$ -			
	Interest		\$ 0.71			
	GEN FUND - GP ICS SAVINGS	\$ 590.25	\$ 0.71	\$ -	\$ 590.96	\$ 67.85
<i>General Fund - Cash Balance</i>					\$ 8,654,826.95	
Temporary Funds -GF	MAJOR REFRIGERATION			\$ 632.24		
	Receipts					
	Interest		\$ 8,446.95			
	DEPRECIATION - GREAT PLAINS STATE BANK	\$ 3,304,632.12	\$ 8,446.95	\$ 632.24	\$ 3,312,446.83	\$ 976,812.44
Activities	PAYROLL - PINNACLE BANK	\$ 370,679.69	\$ 3,834,159.07	\$ 3,827,816.21	\$ 377,022.55	\$ 336,444.53
	HSA/FSA - PINNACLE BANK (Employee Benefit Fund)	\$ 75,813.30	\$ 13,387.18	\$ 17,477.47	\$ 71,723.01	\$ 62,240.78
	ACTIVITY FUNDS - COLUMBUS BANK	\$ 1,609,854.20	\$ 88,718.29	\$ 70,096.74	\$ 1,628,475.75	\$ 1,524,945.02
Nutrition Fund	Attachment M6			\$ 264,856.02		
	Interest Income		\$ 293.23			
	State Reimbursement		\$ 135,506.11			
	Rct to Expenditures		\$ 19,193.99			
	Student/ Staff meals/ alacarte sales		\$ 83,583.73			
	NSF checks		\$ -			
	NUTRITION FUND - CORNERSTONE BANK	\$ 110,324.43	\$ 238,577.06	\$ 264,856.02	\$ 84,045.47	\$ 295,682.19
Bond Fund	Platte County Treasurer		\$ 294,129.80			
	Butler County Treasurer		\$ 3,288.09			
	Polk County Treasurer		\$ 0.84			
	Investment Gain		\$ 7,304.51			
	BOND FUND - FNB	\$ 1,800,851.59	\$ 304,723.24	\$ -	\$ 2,105,574.83	\$ 1,821,986.68
Building Fund	ADVANCED CONSTULTING ENGINEERING SERVICES			\$ 2,480.00		
	CAPITAL ONE PUBLIC FUNDING			\$ 37,756.88		
	Receipts		\$ 111,126.85			
	BLDG FUND - BANK OF THE VALLEY	\$ 546,833.60	\$ 111,126.85	\$ 40,236.88	\$ 617,723.57	\$ 299,687.30
12- Student Fees Fund	Receipts		\$ 0.23			
	STUDENT FEES FUND - ONE UNITED FEDERAL CREDIT UNION	\$ 13,491.46	\$ 0.23	\$ -	\$ 13,491.69	

Columbus Public Schools
General Fund Revenue Detail
January 31, 2026

Account Number	Description	Budget	Month to Date	Year to Date	Balance	Percent
01.1.01100.000.000	Property Taxes	(\$26,625,735.00)	(\$1,555,742.20)	(\$7,850,990.93)	(\$18,774,744.07)	29.49%
01.1.01115.000.000	Carline Taxes	(\$8,000.00)	\$0.00	(\$1,951.65)	(\$6,048.35)	24.40%
01.1.01120.000.000	Public Power District Sales Tax	(\$900,000.00)	\$0.00	\$0.00	(\$900,000.00)	0.00%
01.1.01125.000.000	Motor Vehicle Taxes	(\$2,345,000.00)	(\$228,274.32)	(\$1,034,495.86)	(\$1,310,504.14)	44.11%
01.1.01323.000.000	Tuition, SpEd School Age	(\$3,250.00)	\$0.00	\$0.00	(\$3,250.00)	0.00%
01.1.01510.000.000	Interest on Investments	(\$105,638.00)	(\$15,413.39)	(\$87,194.96)	(\$18,443.04)	82.54%
01.1.01911.000.000	Local License Fees	(\$25,000.00)	\$0.00	(\$17,772.50)	(\$7,227.50)	71.09%
01.1.01990.000.000	Miscellaneous Local Receipts	(\$20,000.00)	\$0.00	\$0.00	(\$20,000.00)	0.00%
01.1.02110.000.000	County Fines & License Fees	(\$161,000.00)	(\$13,463.47)	(\$84,663.53)	(\$76,336.47)	52.59%
01.1.02210.000.000	ESU Receipts	\$0.00	\$0.00	\$0.00	\$0.00	#DIV/0!
01.1.03110.000.000	State Aid	(\$18,156,653.00)	(\$1,803,103.00)	(\$9,141,134.00)	(\$9,015,519.00)	50.35%
01.1.03120.000.000	SpEd Receipts from the State	(\$6,500,000.00)	(\$920,861.00)	(\$1,839,627.00)	(\$4,660,373.00)	28.30%
01.1.03180.000.000	Pro-Rate Motor Vehicle	(\$32,000.00)	(\$63.33)	(\$5,837.36)	(\$26,162.64)	18.24%
01.1.03400.000.000	State Apportionment	(\$1,000,000.00)	(\$1,109,548.74)	(\$1,109,548.74)	\$109,548.74	110.95%
01.1.03535.000.000	High Ability Learners Allocations	(\$25,599.00)	\$0.00	(\$20,309.00)	(\$5,290.00)	79.34%
01.1.03540.000.000	State Early Childhood Grant	(\$130,730.00)	(\$60,163.00)	(\$194,467.00)	\$63,737.00	148.75%
01.1.03541.000.000	Early Childhood Endowment Grant	(\$174,500.00)	\$0.00	(\$28,794.00)	(\$145,706.00)	16.50%
01.1.03551.000.000	CTE Grant	\$0.00	\$0.00	(\$17,056.00)	\$17,056.00	#DIV/0!
01.1.03590.000.000	Opportunity Grant	\$0.00	\$0.00	(\$1,423.04)	\$1,423.04	#DIV/0!
01.1.03599.000.000	State Categorical Programs	\$0.00	\$0.00	(\$1,500.00)	\$1,500.00	#DIV/0!
01.1.04505.000.000	ESSA Title I Part A: Improving	(\$700,176.00)	\$0.00	(\$126,308.00)	(\$573,868.00)	18.04%
01.1.04509.000.000	ESSA Title II Part A Supporting	(\$113,178.00)	\$0.00	(\$117,109.00)	\$3,931.00	103.47%
01.1.04510.000.000	ESSA Title IV Part A Student	(\$48,269.00)	\$0.00	\$0.00	(\$48,269.00)	0.00%
01.1.04516.000.000	IDEA Preschool Enrollment/Povety	(\$25,599.00)	\$0.00	(\$25,237.00)	(\$362.00)	98.59%
01.1.04518.000.000	IDEA Part B (611) Base Enrollment	(\$150,000.00)	\$0.00	\$0.00	(\$150,000.00)	0.00%
01.1.04521.000.000	IDEA Part-B Proportionate Share	(\$164,500.00)	\$0.00	(\$144,379.00)	(\$20,121.00)	87.77%
01.1.04525.000.000	Carl Perkins Grants	(\$41,471.00)	\$0.00	(\$49,309.00)	\$7,838.00	118.90%
01.1.04527.000.000	ESSA Title III Part A English	(\$96,146.00)	\$0.00	(\$3,717.00)	(\$92,429.00)	3.87%
01.1.04528.000.000	ESSA Title III Immigrant	(\$28,744.00)	\$0.00	(\$26,190.00)	(\$2,554.00)	91.11%
01.1.04531.000.000	ESSA Title IV Part B 21st Century	(\$117,000.00)	\$0.00	(\$81,066.00)	(\$35,934.00)	69.29%
01.1.04708.000.000	Medicaid in Public Schools	(\$164,500.00)	(\$13,641.44)	(\$68,207.20)	(\$96,292.80)	41.46%
01.1.04709.000.000	Medicaid Administrative Activity	\$0.00	(\$3,047.20)	(\$10,844.65)	\$10,844.65	#DIV/0!
01.1.04969.000.000	ESSA Title IV-A Sudent Support	\$0.00	\$0.00	(\$23,506.00)	\$23,506.00	#DIV/0!
01.1.04991.000.000	McKenny-Vento Grant	\$0.00	\$0.00	\$0.00	\$0.00	#DIV/0!
01.1.05200.000.000	Transfers from Other Funds	\$0.00	\$0.00	\$0.00	\$0.00	#DIV/0!
01.1.06968.000.000	Columbus After School Program	\$0.00	\$0.00	\$0.00	\$0.00	#DIV/0!
		(\$57,862,688.00)	(\$5,723,321.09)	(\$22,112,638.42)	(\$35,750,049.58)	38.22%
	Transfers					
	Reimbursements/Refunds		(\$5,161.00)			
	Interest other accounts		\$878.19			
			<u> </u>	<u> </u>		
			(5,727,603.90)			

Check Number	Vendor	Amount
21713	JARESKE, KELSEY	\$176.00
21714	ADVANCED FIRE & SAFETY	\$1,354.00
21715	BLAZERWORKS, LLC	\$15,924.25
21716	BOSWELL, ETHAN	\$133.44
21717	COLE, ZACH	\$367.08
21718	COLUMBUS AREA CHAMBER COMMERCE	\$40.00
21719	DAS STATE ACCTG-CENTRAL FINANCE OCIO	\$330.00
21720	FATHER FLANAGAN'S BOYS' HOME	\$39,000.00
21721	FIRST NATIONAL BANK & TRUST	\$320.00
21722	HIGGINS, CONNER W	\$100.00
21723	ICESYSTEMS	\$279.81
21724	JOHNSON, AMORITA	\$35.84
21725	T-BONE TRUCK STOP	\$4,295.89
21726	UPS STORE	\$25.86
21727	AMAZON CAPITAL SERVICES	\$4,203.12
21728	AMAZON CAPITAL SERVICES	\$69.22
21729	SCHOOL DISTRICT #1-PAYROLL	\$3,741,951.71
21730	AMAZON CAPITAL SERVICES	\$4,652.39
21731	HY-VEE FOOD STORES	\$26.71
21732	SUPER SAVER	\$523.77
21733	TREVIPAY-WALMART	\$582.75
21734	FIRST NATIONAL BANK & TRUST	\$125.00
21735	WELLS FARGO BANK, N.A.	\$149,400.00
21736	ASSOCIATED STAFFING, INC	\$7,499.75
21737	BLAZERWORKS, LLC	\$13,980.50
21738	CARROLL SEATING COMPANY	\$6,750.00
21739	COLUMBUS AREA UNITED WAY	\$30.00
21740	DAYLIGHT DONUTS	\$84.65
21741	EDUPOINT EDUCATIONAL SYSTEMS	\$750.00
21742	ENABLE MY CHILD LTD	\$20,400.00
21743	ESU #7 SPECIAL EDUCATION	\$59,143.61
21744	ESU #7	\$8,579.78
21745	ESU #7	\$50.00
21746	ESU #7	\$5,000.00
21747	ETR.	\$6,305.81
21748	GO PHYSICAL THERAPY, LLC	\$52,107.55
21749	GODFATHERS -COLUMBUS	\$222.50
21750	IMAGE TECH & PRINTING	\$288.09
21751	JACKSON SERVICES INC.	\$443.92
21752	JOHNSON, ARIA	\$48.38
21753	LARSON, ELIJAH	\$194.56
21754	MARQUEZ, KATIE	\$110.25
21755	NASPA (NE ASSOC. OF SCHOOL PERSONNEL ADM	\$40.00
21756	PORTER & COMPANY, P.C.	\$18,650.00
21757	STAPLES	\$45.78
21758	STEALTH BROADBAND	\$6,059.51
21759	TOBII DYNAVOX LLC	\$399.00

21760	WOODRIVER ENERGY LLC	\$10,334.90
21761	CARDIO PARTNERS INC	\$583.10
21762	FIRST NATIONAL BANK OMAHA	\$10,699.75
21763	FIRST NATIONAL BANK OMAHA	\$1,210.14
21764	FIRST NATIONAL BANK OMAHA	\$476.14
21765	FIRST NATIONAL BANK OMAHA	\$934.61
21766	FIRST NATIONAL BANK OMAHA	\$321.00
21767	FIRST NATIONAL BANK OMAHA	\$118.65
21768	FIRST NATIONAL BANK OMAHA	\$231.47
21769	FIRST NATIONAL BANK OMAHA	\$534.80
21770	LEGACY 23 APARTMENTS	\$1,495.00
21771	LEGACY 23 APARTMENTS	\$1,701.00
21772	AMAZON CAPITAL SERVICES	\$3,669.99
21773	AMAZON CAPITAL SERVICES	\$9.95
21774	HY-VEE FOOD STORES	\$147.08
21775	SUPER SAVER	\$963.05
21776	TREVIPAY-WALMART	\$176.23
21777	BOSWELL, ETHAN	\$157.82
21778	COLUMN SOFTWARE PBC	\$255.68
21779	Hoenk, Matthew E	\$115.50
21780	JOHNSON, AMORITA	\$115.20
21781	NASB (NE. ASSOCIATION OF SCHOOL BOARDS)	\$8,477.00
21782	OMAHA WORLD HERALD	\$309.40
21783	PITNEY BOWES - RESERVE ACCOUNT	\$1,000.00
21784	PITNEY BOWES GLOBAL FINANCIAL SERVICES L	\$1,486.98
21785	PLUNKETTS PEST CONTROL	\$770.76
21786	SAVVAS LEARNING COMPANY LLC	\$2,171.88
21787	U AND I SANITATION LLC	\$2,235.00
21788	ACE HARDWARE-COLUMBUS	\$38.38
21789	ARNOLD MOTOR SUPPLY-COLUMBUS	\$149.35
21790	BLAZERWORKS, LLC	\$13,185.00
21791	BOMGAARS	\$45.94
21792	BYRKIT PIANO SERVICE	\$190.00
21793	COBLE, MELISSA	\$195.51
21794	COLUMBUS MUSIC	\$1,133.73
21795	COLUMBUS TIRE & SERVICE CENTER	\$558.00
21796	DEMCO, INC	\$96.61
21797	EAKES OFFICE SOLUTIONS	\$113.84
21798	ELECTRICAL ENGINEERING & EQUIP	\$3,939.84
21799	FOLLETT CONTENT SOLUTIONS, LLC	\$590.08
21800	FOREMAN SUPPLY INC	\$63.40
21801	FREEMAN, TYLER	\$223.44
21802	GARCIA, YURI	\$235.20
21803	GEHRING CONST. & READY MIX CO.	\$78.75
21804	GUTMANN, CLIFF J	\$305.75
21805	HERLIN, REBECCA	\$12.32
21806	IMAGE TECH & PRINTING	\$205.34
21807	J.W. PEPPER & SON, INC	\$882.89

Columbus Public Schools
General Fund Expenditures
January 10-31, 2026

21808	JARECKI, KAY	\$223.44
21809	JONSON, AMANDA	\$30.80
21810	LAKESHORE LEARNING MATERIALS	\$113.97
21811	LIGHTSPEED TECHNOLOGIES INC.	\$3,004.00
21812	LUNCHTIME SOLUTIONS, INC	\$227.42
21813	MAXIM HEALTHCARE SERVICES, INC.	\$5,265.00
21814	MCGRAW-HILL EDUCATION HOLDINGS LLC	\$2,620.80
21815	MENARDS-COL	\$164.86
21816	MIDWEST DOOR & HARDWARE	\$1,834.50
21817	MURPHY, DAWN	\$1,015.00
21818	PRESENCELEARNING INC	\$93,526.65
21819	PRINTCO GRAPHICS, INC	\$84.00
21820	PRO-ED, INC.	\$87.00
21821	RUTT'S HEATING & AIR CONDITIONING, INC -	\$15,170.00
21822	SCHOOL HEALTH CORPORATION	\$588.05
21823	STAROSCIK, KRISTINE	\$558.60
21824	TIRE OUTLET INC	\$20.00
21825	TRUCK CENTER COMPANIES	\$78.74
21826	VOSS LIGHTING	\$549.76
21827	WRIGHT, ABBEY	\$223.44
21828	ASSOCIATED STAFFING, INC	\$7,057.81
21829	FRANKLIN COVEY CLIENT SALES, INC	\$26,805.04
21830	NEBRASKA UC FUND	\$2,642.00
	Total Fund Expenditures	<u><u>\$4,405,936.81</u></u>

Check Number	Vendor	Amount
3420	CUEVAS, CHRISTIAN	\$ 200.90
3421	ESU #7	\$ 30.23
3422	GALVEZ-ALFARO, YANELA	\$ 27.20
3423	JACKSON SERVICES INC.	\$ 66.56
3424	VERIZON WIRELESS	\$ 32.91
3425	SCHOOL DISTRICT #1-PAYROLL	\$ 91,329.88
3426	ADVANCED FIRE & SAFETY	\$ 608.08
3427	HY-VEE FOOD STORES	\$ 3,175.00
3428	JACKSON SERVICES INC.	\$ 66.61
3429	LUNCHTIME SOLUTIONS, INC	\$ 169,318.65
	Total Fund Expenditures	<u>\$ 264,856.02</u>

Columbus Public Schools
 Summary of Cash Balances _QCPUF
 January 31, 2026

M9	DESCRIPTION	BEGINNING BALANCE	MONTH TO DATE RECEIPTS	MONTH TO DATE EXPENDITURE	END OF MONTH BALANCE	YTD BALANCE PRIOR YEAR
	Amazon Capital Services			\$ 418.86		
	B-D Construction Inc			\$ 177,997.87		
	Clark & Enersen			\$ 2,489.90		
	Commonwealth Electric Midwest			\$ 5,062.50		
	Dell Marketing L.P.			\$ 12,505.03		
	Floors Inc			\$ 4,769.00		
	Powder Coating Plus LLC			\$ 1,280.00		
	Receipts					
	Transfers					
	Interest		\$ 4,570.90			
	QCPUF OPERATING -- COLUMBUS BANK	\$ 1,601,406.35	\$ 4,570.90	\$ 204,523.16	\$ 1,401,454.09	
	Transfers					
	Receipts		\$ 49,881.90			
	Interest		\$ 119.71			
	QCPUF BOND-- COLUMBUS BANK	\$ 45,205.33	\$ 50,001.61	\$0.00	\$95,206.94	
*Totals are the Operating and ICS Savings combined for each account						

Check Number	Vendor	Amount
21831	ALLO COMMUNICATIONS	\$197.50
21832	BLAZERWORKS, LLC	\$10,347.00
21833	CENTER 7 THEATER	\$300.00
21834	CITY OF COLUMBUS WATER & SANITATION DEPA	\$4,796.63
21835	CITY OF COLUMBUS-TRANSFER STATION	\$159.39
21836	COLE, RAELYNN	\$53.93
21837	COLUMBUS SCHOOL LUNCH FUND-CHS	\$783.29
21838	COLUMBUS SCHOOL LUNCH FUND-CHS	\$75.00
21839	COLUMBUS TOUR & TRAVEL	\$5,899.11
21840	COLUMN SOFTWARE PBC	\$18.80
21841	CULLIGAN	\$56.00
21842	DELL MARKETING L.P.	\$510.40
21843	ELECTRONIC ENGINEERING	\$408.70
21844	HOMETOWN LEASING	\$6,749.98
21845	HOMETOWN LEASING	\$178.67
21846	JACKSON SERVICES INC.	\$222.45
21847	JNW CONSULTING, LLC	\$1,500.00
21848	KWAPNIOSKI, LEONARD R	\$116.73
21849	LINCOLN JOURNAL STAR	\$99.00
21850	LOUP POWER DISTRICT	\$58,670.13
21851	LOUP POWER DISTRICT	\$253.28
21852	LOUP POWER DISTRICT	\$198.87
21853	LOUP POWER DISTRICT	\$161.29
21854	NATIONAL SCHOOL PUBLIC RELATIONS ASSOCIA	\$845.00
21855	ONE SOURCE	\$357.50
21856	PITNEY BOWES - RESERVE ACCOUNT	\$1,000.00
21857	THRYV	\$27.52
21858	UNIVERSITY OF NEBRASKA LINCOLN	\$1,000.00
21859	VERIZON WIRELESS	\$357.43
21861	AMAZON CAPITAL SERVICES	\$203.98
21862	HY-VEE FOOD STORES	\$884.09
21863	SUPER SAVER	\$647.38
21864	TREVIPAY-WALMART	\$149.75
21865	AMAZON CAPITAL SERVICES	\$6,574.34
21866	ACE HARDWARE-COLUMBUS	\$24.47
21867	ARNOLD MOTOR SUPPLY-COLUMBUS	\$43.18
21868	BATES, LINDSEY	\$297.55
21869	BERTRAND, KATIE	\$32.05
21870	BLASER, TASHA	\$210.76
21871	BLAZERWORKS, LLC	\$13,827.00
21872	BOMBERGER, KYLA	\$108.46
21873	BOMGAARS	\$290.36
21874	BOS, JENNY	\$334.74
21875	CAPITAL SANITARY SUPPLY	\$1,331.43
21876	COBLE, MELISSA	\$260.36

Check Number	Vendor	Amount
21877	COFFEY, ALANNAH	\$185.97
21878	COLE, CRYSTAL	\$282.75
21879	COLE, ZACK	\$82.65
21880	COLUMBUS MUSIC	\$944.53
21881	CONTROL DEPOT	\$180.17
21882	DAVIS, AMANDA	\$176.18
21883	DAYLIGHT DONUTS	\$47.15
21884	DUSH, REGINA	\$322.34
21885	EAKES OFFICE SOLUTIONS	\$168.71
21886	ELECTRICAL ENGINEERING & EQUIP	\$467.34
21887	FATHER FLANAGAN'S BOYS' HOME	\$46,800.00
21888	FOLLETT CONTENT SOLUTIONS, LLC	\$512.09
21889	FREEMAN, TYLER	\$281.02
21890	GALLEY, SHANNON	\$260.35
21891	GARCIA, YURI	\$208.80
21892	GO PHYSICAL THERAPY, LLC	\$66,850.85
21893	GRAFE, TARA	\$223.44
21894	HD SUPPLY	\$764.71
21895	HERLIN, REBECCA	\$32.48
21896	HOMAN, KELLY	\$57.86
21897	IMAGE TECH & PRINTING	\$220.25
21898	J.W. PEPPER & SON, INC	\$98.97
21899	JACKSON SERVICES INC.	\$116.73
21900	JARECKI, KAY	\$264.49
21901	JARESKE, KELSEY	\$260.35
21902	JENSEN, VALERIE	\$360.18
21903	JOHNSON, AMORITA	\$40.96
21904	JOURNEYED.COM INC.	\$26,959.56
21905	KOHL, CHELSEY	\$222.55
21906	KUSH, DENISE	\$297.54
21907	LUNCHTIME SOLUTIONS, INC	\$459.46
21908	MADDEN THERAPY LLC	\$11,602.60
21909	MARKING, LORI	\$57.42
21910	MARQUEZ, KATIE	\$150.50
21911	MATHESON TRI-GAS INC	\$42.50
21912	MCPHILLIPS, BRIDGET	\$16.02
21913	MENARDS-COL	\$1,106.65
21914	MIDWEST DOOR & HARDWARE	\$1,721.30
21915	MIRACLE PLAYSYSTEMS	\$597.78
21916	MUELLER, PAM	\$185.97
21917	NAPA AUTO PARTS	\$10.74
21918	NEBRASKA HARVESTORE SYSTEMS	\$389.44
21919	NORFOLK PUBLIC SCHOOLS	\$5,228.20
21920	NOYD, BECCA	\$26.39
21921	NSBA - NEBRASKA STATE BAND MASTERS ASSN	\$400.00


Check Number	Vendor	Amount
21922	OCCUPATIONAL HEALTH SERVICES	\$364.00
21923	Olcott, Caitlin L	\$115.71
21924	OMAHA MUSIC THERAPY LLC	\$4,912.50
21925	PACZOSA, MEGAN	\$281.01
21926	PEREZ, DOLORES	\$44.66
21927	PLANK ROAD PUBLISHING, INC.	\$63.40
21928	PRESENCELEARNING INC	\$127,409.15
21929	PRODUCTIVITY INC	\$260.48
21930	RENSENHOUSE	\$25.00
21931	ROBERTSON, KATIE	\$260.35
21932	ROSAS, AMANDA	\$281.02
21933	RUTT'S HEATING & AIR CONDITIONING, INC -	\$483.34
21934	SCHIEFFER SIGNS	\$87.00
21935	SCHOLASTIC INC.	\$17.40
21936	SERVICEMASTER BY SHEVLIN	\$53,959.50
21937	SETTLES, ERIN	\$297.55
21938	SHEVLIN SUPPLY	\$1,262.52
21939	SONOVA USA, INC.	\$56.19
21940	STAROSCIK, JULIE	\$20.67
21941	STAROSCIK, KRISTINE	\$214.90
21942	STEMPEK, STACI	\$247.96
21943	TWOREK, DANIEL	\$297.55
21944	VENTRIS LEARNING LLC	\$160.00
21945	VERING, CHRISTOPHER	\$43.50
21946	WRIGHT, ABBEY	\$297.55
21947	APPLE INC.	\$4,860.00
21948	ASSOCIATED STAFFING, INC	\$5,009.40
21949	Braze, Wade W	\$31.50
21950	BURESCH MEATS	\$120.00
21951	ESU #7	\$7,738.96
21952	GASCON, RAUL	\$24.36
21953	Ortiz, Kari L	\$56.00
21954	PERRY, GUTHERY, HAASE, & GESSFORD, P.C.	\$1,846.80
21955	PITNEY BOWES - RESERVE ACCOUNT	\$837.68
21956	PITNEY BOWES - RESERVE ACCOUNT	\$788.34
21957	PLUNKETTS PEST CONTROL	\$55.64
21958	SAPP BROS PETROLEUM	\$628.00
21959	T-BONE TRUCK STOP	\$4,061.02
21960	UBT - OMNIFY FSA	\$332.00
21961	UPS STORE	\$17.63
21962	Wolfe, Thomas A	\$12.28
21963	YOUNG, GAVIN	\$102.34
Total Fund Expenditures		\$508,234.30

Columbus Public Schools

Professional Leave Report

Board Report - January 30, 2026

Employee	Start Date	End Date	Event/Location
Jason Harris	09/30/2025	05/29/2026	NASES Region 3 Meeting - Norfolk
Eric Edzards	01/09/2026	01/09/2026	NPERS Meeting - Lincoln
Leonard Kwapnioski	01/09/2026	01/09/2026	NATA Meeting - Bellevue
Nicole Anderson	01/09/2026	01/09/2026	NebSPRA Monthly Meeting - Ralston
Jason Schapmann	01/16/2026	01/16/2026	Midland Career Fair
Chip Kay	01/21/2026	01/21/2026	GNSA Meeting - Lincoln
Paula Lawrence	01/21/2026	01/21/2026	NPERS Meeting - Lincoln
Sara Colford	01/22/2026	01/22/2026	UNK Teacher Job Fair
Chip Kay	01/23/2026	01/23/2026	NCSA Legislative Committee - Lincoln
Leonard Kwapnioski	01/27/2026	01/28/2026	NEFA Meeting - Lincoln
Benjamin Loeffelholz	01/28/2026	01/28/2026	SkillsUSA Board Meeting
Chip Kay	01/28/2026	01/28/2026	NCSA Executive Committee
Elissa Heibel	01/29/2026	01/29/2026	Braille Challenge - Nebraska City
Kari Tunink	01/30/2026	01/30/2026	FBLA Board Meeting
Jason Harris	01/30/2026	01/30/2026	NASES Region III - Norfolk



**COLUMBUS
PUBLIC SCHOOLS
FOUNDATION**

2410 16th Street, Suite A, P.O. Box 947, Columbus, NE 68602-0947 Phone: 402-563-7000, Ext. 13033 Fax: 402-563-7005

February 9, 2025

Mike Jeffryes
Board of Education
Columbus Public Schools

Dear President Jeffryes and Members of the Board:

The Foundation contributed the following items to Columbus Public Schools during the month of January. On behalf of the Board of Directors for the CPS Foundation and the officers of the thirteen umbrella organizations, we respectfully submit these items to the Board of Education for acceptance.

Foundation

\$3,872.84 - Columbus After School Program
\$175.00 - Educators Rising

\$608.00 - CHS Key Club
\$587.30 - National School Board

Band Boosters

\$205.00 - Decals and Banners

Centennial PAC

\$384.96 - Holiday Candy
\$64.28 - Leader in Me Breakfast for Staff

North Park PTO

\$194.28 - Classroom Support

Sports Boosters

\$1,098.19- Winter Sports Program Design and Printing
\$2,790.00 - Destro Machines Single Towers for Swim Team

Vocal Music Boosters

\$47.16 - Candy Canes and Plant
\$96.00 - Decals

West Park PTO

\$375.99 - Paper Roll Holder

The total contributions for the month of January was \$10,499.00

The total contributions for the FY 2026 total is **\$10,499.00**

**CPS Foundation's fiscal year is January 1 through December 31.*

Thank you for your consideration.

Sincerely,



Nicole Anderson
Communication & Foundation Director

LEGISLATIVE ANALYSIS

AM2026 Amendment to LB1050

Bill:	LB1050 (Nebraska Reading Improvement Act)
Amendment:	AM2026 (White Copy Amendment, dated 02/09/2026)
Prepared:	February 16, 2026
Prepared For:	Columbus Public Schools

Executive Summary

AM2026 is a **white copy amendment** that replaces the original LB1050 text entirely. While preserving the core third-grade retention framework, AM2026 significantly expands the bill by integrating Nebraska's dyslexia statutes (79-11,156 and 79-11,157) into the Nebraska Reading Improvement Act. The amendment adds mandatory dyslexia screening requirements, strengthens State Board oversight of reading interventions, and modifies several notification and exemption provisions.

Implementation Timeline: Beginning with the 2027-28 school year

Key Changes Introduced by AM2026

1. Mandatory Dyslexia Screening (New Section 8)

Beginning with the 2027-28 school year, each school district must adopt a policy to screen all students in kindergarten through grade two for risk factors related to dyslexia using a state-approved screener.

- Screening occurs annually during the spring
- Administered for kindergarten and at the beginning of grades one and two
- **Required screening components:**
 - Phonological and phonemic awareness
 - Sound symbol recognition
 - Alphabet knowledge
 - Decoding skills
 - Rapid naming skills (letter naming and letter sound fluency)
 - Encoding skills
 - Oral reading accuracy and fluency

If screening indicates risk factors for dyslexia, the school must use a multi-tiered system of support framework and notify parents with specific resource materials about dyslexia characteristics, appropriate interventions, and their option for additional educational evaluation.

2. Reduced ELL Exemption Period

Original LB1050	AM2026
Students receiving LEP instruction for less than two years are exempt	Students receiving LEP instruction for less than one year are exempt

3. State Board Oversight of Interventions (New Sections 11(4)-(5))

- State Board of Education must establish criteria for reading interventions, programs, and instructional materials used under the Act
- The State Board **shall not approve** any intervention, program, or material that is not evidence-based or utilizes the three-cueing system model
- NDE must maintain and make publicly available a list of approved evidence-based interventions and supports designed to address dyslexia

4. Enhanced Parent Notification Requirements (Section 12)

AM2026 significantly expands and restructures parent notification requirements:

1. **For students in K and Grade 1:** Notification within 15 working days of identification, informing parents that the student has/remains identified with a reading deficiency and that an individualized reading improvement plan will be established/reviewed
2. **For students in Grades 2-3:** Same notification requirements plus additional notice that if the student continues to be identified with a reading deficiency at the end of grade three and does not meet threshold levels, the student will be identified as having a persistent reading deficiency and retained
3. **Meeting opportunity:** Parents may meet to discuss the student’s individualized reading improvement plan and potential changes with the teacher, principal, or other pertinent school personnel

5. Dyslexia-Specific IRP Requirements (Section 12(3))

If a student is identified as exhibiting characteristics of dyslexia, their individualized reading improvement plan **shall include** evidence-based structured literacy instruction pursuant to section 79-11,156.

6. Technical Assistance: “Shall” vs. “May”

Original LB1050	AM2026
NDE <i>may</i> provide technical assistance	NDE shall provide technical assistance

Provisions Unchanged from Original LB1050

Core Retention Policy

- Beginning 2027-28, students with a “persistent reading deficiency” at the end of grade 3 cannot be promoted to grade 4
- Definition of “persistent reading deficiency” remains unchanged (below threshold on statewide assessment, alternate assessment, or test-based portfolio)

Exemptions from Mandatory Retention

- Students exempt from approved reading assessments
- Special education/504 students who participated in intervention for 2+ years AND were previously retained at least one year in K-3
- Any student who participated in intervention for 2+ years AND was previously retained a cumulative two years in K-3

One-Time Retention Limit

- No student may be retained in grade 3 under this Act more than once

Assessment Framework

- Three assessments per year for K-3 students
- Kindergarten: first 45 calendar days of school
- Grades 1-3: first 30 calendar days
- Same threshold-setting timeline (October 1, 2026 for statewide assessment; January 1, 2027 for portfolio option)

Intensive Acceleration Class Requirements

Same detailed requirements for retained students:

- Reduced student-teacher ratio
- Individualized instruction
- Evidence-based reading intervention practices
- Diagnostic assessments and frequent progress monitoring
- Transitional instructional setting option
- Access to before/after-school intervention

Funding

- Legislature’s intent to appropriate \$2 million annually from the Education Future Fund for regional coaches (FY 2024-25 through FY 2026-27) remains unchanged

Implementation Considerations for CPS

Immediate Planning Needs (Before 2027-28)

- **Dyslexia Screener Selection:** Identify and procure a State Board-approved dyslexia screener
- **Staff Training:** Develop training protocols for administering the dyslexia screener across all K-2 settings
- **MTSS Framework:** Ensure multi-tiered support systems are prepared to serve students identified with dyslexia risk factors
- **Parent Communication Templates:** Update notification materials to comply with enhanced requirements

ELL Program Considerations

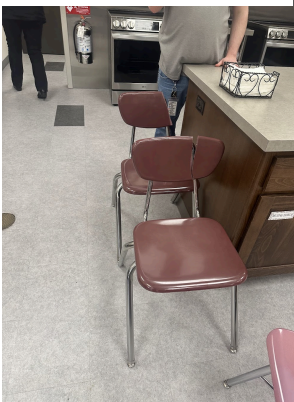

The reduced exemption period from two years to one year for students receiving specialized LEP instruction will affect how the district serves English learners in early grades. Review current ELL population data and intervention capacity.

Intervention Materials Review

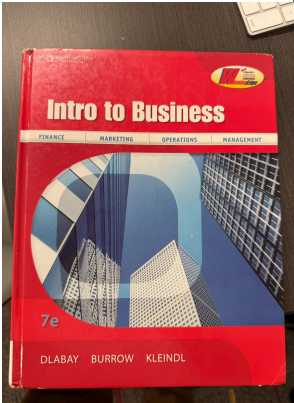
Audit current reading intervention programs and materials to ensure compliance with the State Board's forthcoming criteria. Programs using three-cueing approaches will need to be replaced.

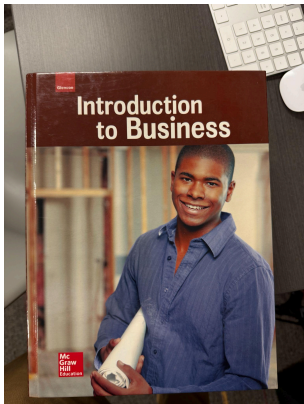
This analysis is provided for informational purposes. Districts should consult with legal counsel for specific compliance guidance.

DATE	2/6/26
BUILDING	CASSETTE House
PROGRAM	CASSETTE
PRINCIPAL/DIRECTOR SIGNATURE	
Description of materials to surplus: 2 broken classroom chairs 1 broken wooden chair	

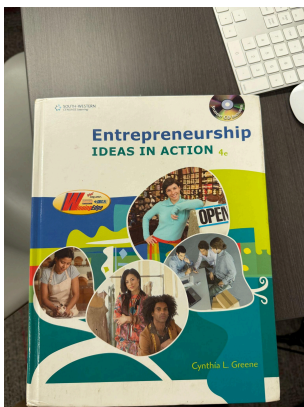
IMAGE INSERTED (If available)	DESCRIPTION	HOW WILL ITEMS BE DISPOSED OF
	<p>These two chairs are broken from being thrown by a student.</p>	<p>Trash</p>
	<p>This chair is broken from being thrown by a student.</p>	<p>Trash</p>

DATE	2-4-2026
BUILDING	High School
PROGRAM	Business
PRINCIPAL/DIRECTOR SIGNATURE	<i>Dave Hiebner</i>

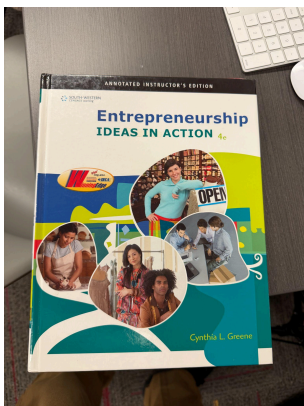
IMAGE INSERTED (If available)	DESCRIPTION	HOW WILL ITEMS BE DISPOSED OF
	<p>Qty 14 Red Intro to Business 7e Dlabay, Burrow, Kleindl</p>	<p>Trash</p>



Qty 1
Red Introduction to Business
McGraw Hill Education
Glencoe



Qty 27
Entrepreneurship: Ideas in
Action 4e
Cynthia L Greene



Qty 1
Entrepreneurship: Ideas in
Action 4e
Annotated Instructor's Edition
Cynthia L Greene

To: Board of Education
From: Leonard Kwapnioski
CC: Dr. Kay
Date: February 6, 2026
Re: Surplus

It is my recommendation that the Board of Education consider approving the following items surplus. We are looking to sell if usable or scrap if that's the best option. If we can sell them, we will place them at the warehouse on Howard Blvd and place them for sale as we had done with other vehicles in the past.

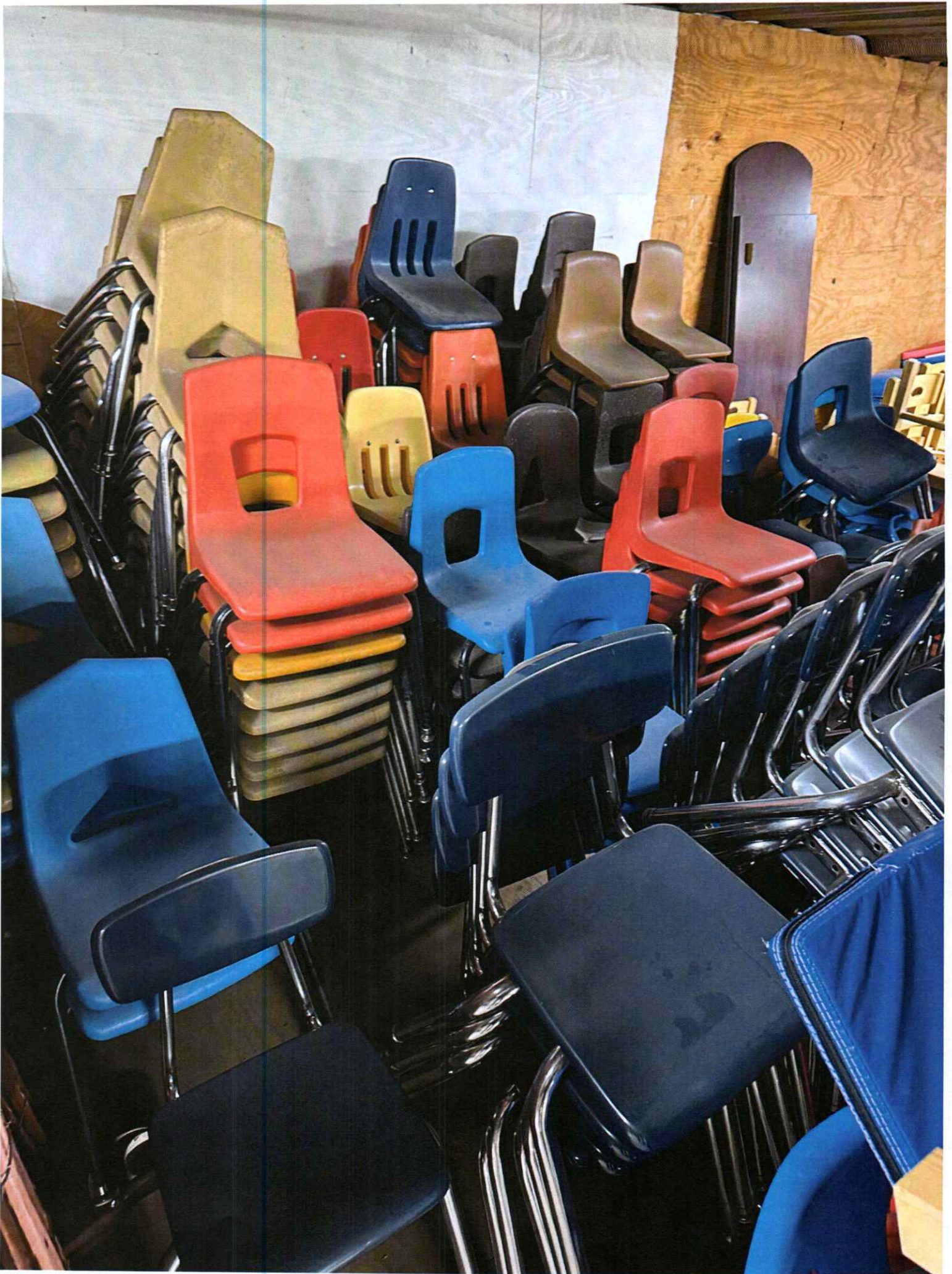
2014	Blue Bird	1BABNBCA3EF301693
2014	Blue Bird	1BABNBCA5EF301694
2008	Chevy Suburban	3GNFC16038G113728
1999	Chevy Express 3500	1GAHG39R1X1024578
1990	Chevy Cheyenne	1GCDC14Z0LE173600
	Red Trailer	86731
1998	Chevy 3500 Dump truck	1GBKC34F3WF065225
2003	Chevy Express 3500	1GAHG39U831202274
2000	Chevy Express 3500	1GAHG39R3Y1126563

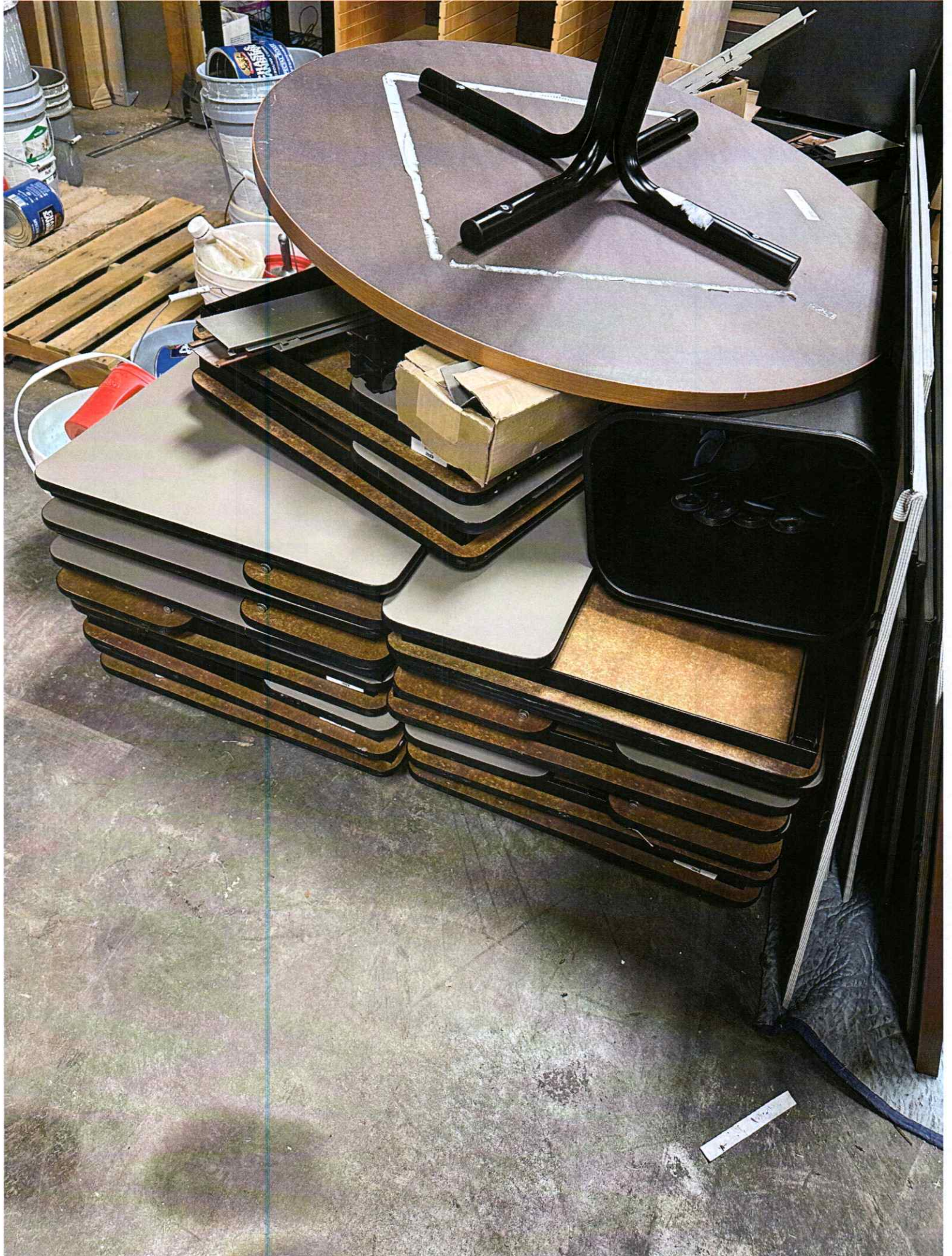
Attached are pictures of furniture that needs to be disposed of in the best way possible.

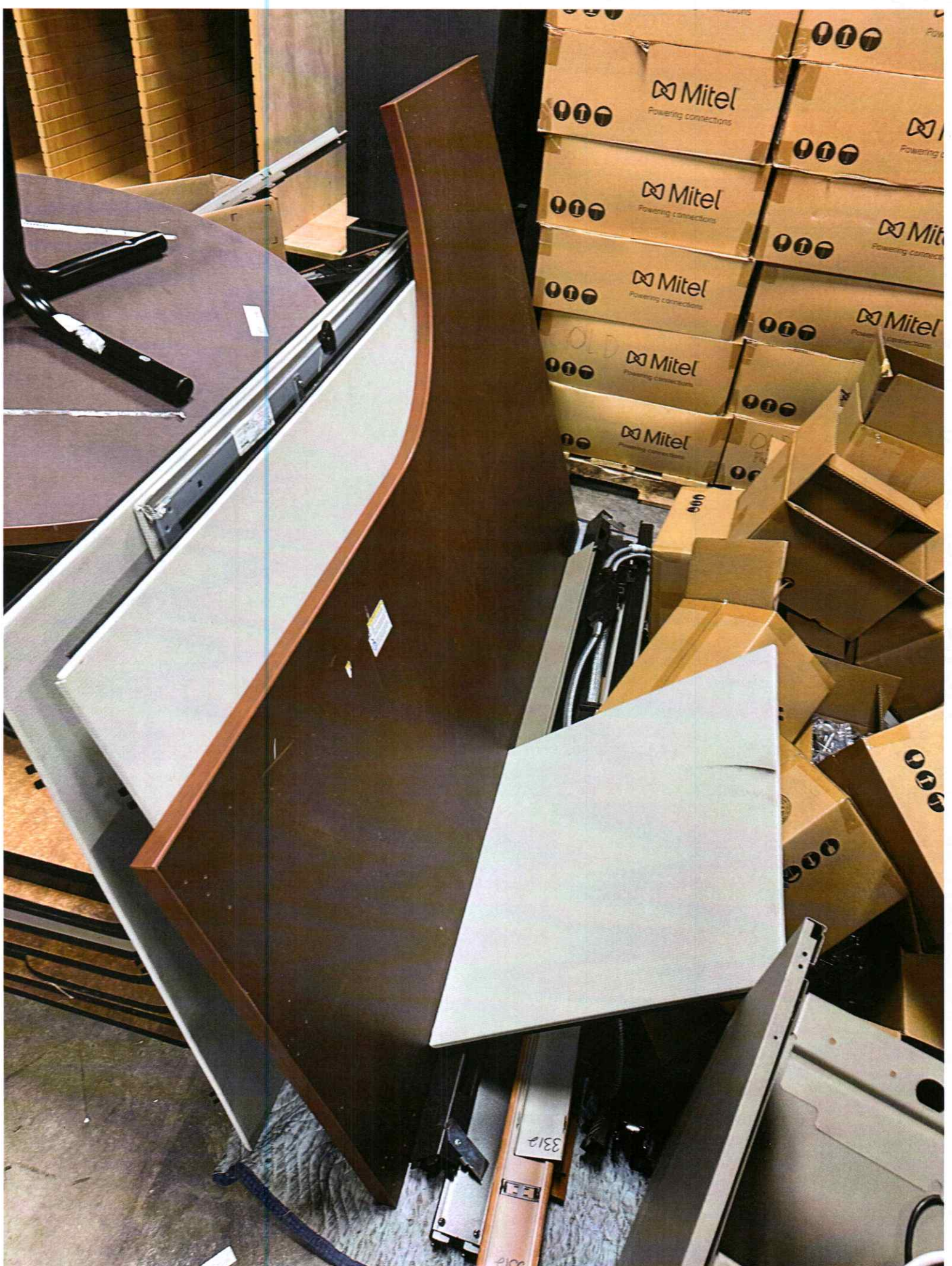
- Chairs(50)
- Old Conference room tables(20)
- Front office desk parts
- Doors from old middle school

Thanks.

Leonard









NOTICE OF NONDISCRIMINATION

Employees, students, and parents of secondary school students, are hereby notified that this institution does not discriminate on the basis of race, color, national origin, sex, age, or handicap in admission or access to, treatment or employment in its programs and activities. Any person having inquiries concerning Columbus Public School District #1 compliance with the regulations implementing Title VI, Title IX, or Section 504 is directed to contact Dr. Chip Kay, Superintendent, Columbus Public School District #1, 2410 16th Street Suite A, Columbus, Nebraska 68601, telephone number 402-563-7000. Dr. Chip Kay has been designated by Columbus Public School District #1 to coordinate the institution's efforts to comply with the regulations implementing title VI, Title IX, and Section 504. Any person may also contact the Assistant Secretary for Civil Rights, U.S. Department of Education, regarding the institution's compliance with the regulations implementing Title VI, Title IX, or Section 504.

NOTIFICATION OF AMERICAN DISABILITIES ACT

If you have any special needs requests that will assist you in participating in programs, services or activities of the Columbus Public Schools, please contact Dr. Chip Kay, Superintendent.

Columbus Middle School

2200 26th Street

Columbus NE 68601

Phone: 402-563-7060

Fax: 402-563-7068

www.columbuspublicschools.org

Principal

Amy Haynes

haynesa@discoverers.org

Assistant Principal / Activities Coordinator

Jordon Anderson

andersonj@discoverers.org

Assistant Principal

Adriana Carnes

carnesa@discoverers.org

Assistant Principal

Alex Dostal

dostala@discoverers.org

Assistant Principal

Katie Rose

rosek@discoverers.org

Table of Contents

- Staff Assignments, Continuous Improvement Goals.....4
- Principal Letter.....5
- Teaming, Grading Procedures, Daily Schedules.....6-7
- 5th through 8th Grade Class Sequence Charts.....8-11

- 5th - 6th Grade Course Descriptions
 - Required Core Classes, Fitness.....12
 - Exploratory Classes.....13-14

- 7th Grade Course Descriptions
 - Required Core Classes, Health/Fitness.....15-16
 - Exploratory Classes.....16
 - Elective Classes.....17

- 8th Grade Course Descriptions
 - Required Core Classes, Health/Fitness.....18
 - Exploratory Classes.....19
 - Elective Classes.....19-20
- Special Programs.....21
- Special Programs, English Language Learners.....22
- Special Programs, High Ability Learners.....23
- Special Programs, Special Education.....24
- Extracurricular Activities.....25

Staff Assignments

Office Phone Number: 402-563-7060

School Counselors

Malia White - 5th Grade
whitem@discoverers.org

Kim Shevlin - 6th Grade
shevlink@discoverers.org

Angie Kruse - 7th Grade
krusea@discoverers.org

Jared Johnson - 8th Grade
johnsonj@discoverers.org

School LMHP

Amy Theis - theisa@discoverers.org

School Nurses

Katie Kruse - krusek@discoverers.org
Danielle Pasonault -
pasonaultd@discoverers.org

School Psychologist

Stacey Romick-Imig -
romickimigs@discoverers.org

School Social Worker

Heidi Luebbe - luebbeh@discoverers.org

Office Support

Angie Andreasen - Secretary to Principal
andreasena@discoverers.org

Heather Christensen - Activities Secretary
christensenh@discoverers.org

Traci Seim - Counseling Office Secretary
seimt@discoverers.org

Norma Gardea - Attendance Secretary
gardean@discoverers.org

Yahaira Vasquez Beltran - Secretary
vasquezy@discoverers.org

Media Center

Amy Jahn- jahna@discoverers.org

After-School Program

Stacey Whiting - Supervisor 402-563-4901

Continuous Improvement Goals

Building Continuous Improvement Goals

Mathematics: CMS students will increase mathematics achievement.

Reading: CMS students will increase reading achievement.

Dear Parents and Students,

Our district mission statement of “Engaging All Learners to Achieve Success” is alive and well at Columbus Middle School. We are glad that you chose to learn here. We know that you will be able to find classes and activities that are of interest to you at CMS. Several factors make middle school a unique setting that is much different from the elementary level and high school.

Columbus Middle School provides:

- A strong core curriculum of reading language arts, math, science, and social studies
- Exploratory programs and activities in all areas of the curriculum to help students discover and extend interests and abilities
- An involved counseling curriculum
- A supportive environment for the physical and social development of every student
- An intramural and activity-oriented program to accommodate the needs of the early adolescent
- A positive climate that fosters self-esteem, self-discipline, and student responsibility
- Knowledgeable educators who are committed to the middle school design
- An on going program of training and professional skills that are based on the characteristics and needs of the adolescent
- Close contact and communication between parents and school
- Opportunities for intervention and acceleration when needs are identified
- A strong careers program that encourages post-secondary education
- An after-school program with workshops that reach out to a wide-range of student interests
- Interdisciplinary teams in which all students are “One of the family”

We hope that you find the information that you need in this book. Our counseling department will assist you with the registration process and make sure that you and your child have no unanswered questions.

Again, welcome to Columbus Middle School. We look forward to working with your child and you.

Amy Haynes, Principal

Teaming

What is a TEAM?

Every student who comes to Columbus Middle School will be placed on a team. Teaming is a middle school concept that enables teachers to build relationships and better monitor students' social and academic needs in a smaller learning community. Teachers within a team consistently communicate with one another about the progress of their students and work together to help them achieve success.

All students assigned to a particular team will have the same set of core teachers for their required classes. This team of teachers meets twice a week to discuss classroom and school activities, accomplishments, and concerns.

Are there differences between teams?
Teams are divided evenly. School counselors do placement on teams at the beginning of every school year.

Grading Procedures

Grade Policy

For grade point average purposes, Columbus Middle School will implement a 10 point scale.

A+	=	4.0	98 - 100%	C+	=	2.0	77 - 79%
A	=	4.0	90 - 97%	C	=	2.0	70 - 76%
B+	=	3.0	87 - 89%	D+	=	1.0	67 - 69%
B	=	3.0	80 - 86%	D	=	1.0	60 - 66%
				F	=	0.0	Below 60%

Daily Schedule

REGULAR BLOCK SCHEDULE

5th Grade

Advisory	8:00 - 8:10
1	8:13 - 8:54
2	8:57 - 9:38
3	9:41 - 10:22
4	10:25 - 11:06
5	11:09 - 11:50
6	11:53 - 12:34
7 (lunch)	12:35 - 1:18
8	1:21 - 2:02
9	2:05 - 2:46
10	2:49 - 3:30

WEDNESDAY SCHEDULE

5th Grade

Advisory	8:00 - 8:25
1	8:28 - 9:02
2	9:05 - 9:39
3	9:42 - 10:16
4	10:19 - 10:53
5	10:56 - 11:30
6	11:33 - 12:07
7 (lunch)	12:08 - 12:44
8	12:47 - 1:21
9	1:24 - 1:58
10	2:01 - 2:35

REGULAR BLOCK SCHEDULE

6th Grade

Advisory	8:00 - 8:10
1	8:13 - 8:54
2	8:57 - 9:38
3	9:41 - 10:22
4 (lunch)	10:23 - 11:06
5	11:09 - 11:50
6	11:53 - 12:34
7	12:35 - 1:18
8	1:21 - 2:02
9	2:05 - 2:46
10	2:49 - 3:30

7th Grade

Advisory	8:00 - 8:10
1	8:13 - 8:54
2	8:57 - 9:38
3	9:41 - 10:22
4	10:25 - 11:06
5 (lunch)	11:07 - 11:50
6	11:53 - 12:34
7	12:35 - 1:18
8	1:21 - 2:02
9	2:05 - 2:46
10	2:49 - 3:30

8th Grade

Advisory	8:00 - 8:10
1	8:13 - 8:54
2	8:57 - 9:38
3	9:41 - 10:22
4	10:25 - 11:06
5	11:09 - 11:50
6 (lunch)	11:53 - 12:34
7	12:35 - 1:18
8	1:21 - 2:02
9	2:05 - 2:46
10	2:49 - 3:30

WEDNESDAY SCHEDULE

6th Grade

Advisory	8:00-8:25
1	8:28-9:02
2	9:05-9:39
3	9:42-10:16
4 (lunch)	10:16-10:53
5	10:56-11:30
6	11:33-12:07
7	12:10-12:44
8	12:47-1:21
9	1:24-1:58
10	2:01-2:35

7th Grade

Advisory	8:00-8:25
1	8:28-9:02
2	9:05-9:39
3	9:42-10:16
4	10:16-10:53
5 (lunch)	10:56-11:30
6	11:33-12:07
7	12:10-12:44
8	12:47-1:21
9	1:24-1:58
10	2:01-2:35

8th Grade

Advisory	8:00-8:25
1	8:28-9:02
2	9:05-9:39
3	9:42-10:16
4	10:16-10:53
5	10:56-11:30
6 (lunch)	11:33-12:07
7	12:10-12:44
8	12:47-1:21
9	1:24-1:58
10	2:01-2:35

5th through 8th Grade Class Sequence

Career and Technical Education

Grade	Required	Elective
5th Grade	Computer Skills 5 2 STEM Courses	Art 5 Family and Consumer Sciences 5
6th Grade	2 STEM Courses Computer Skills 6	Art 6 Family and Consumer Sciences 6
7th Grade	1 Computer Class 2 STEM Courses	Fashion and Finance 7 Foods and Family 7
8th Grade	2 STEM Courses	Child Development and Care 8 Computer Science 8 Digital Media 8 Fashion and Finance 8 Foods and Family 8

English

Grade	Required	Elective
5th Grade	Language Arts 5	Reading Skills **
6th Grade	Language Arts 6	Reading Skills **
7th Grade	Language Arts 7	Introduction to Journalism
8th Grade	Language Arts 8	Yearbook **
		** Entry based on selection process

Fine Arts

Visual Arts Electives

5th Grade	Art 5
6th Grade	Art 6
7th Grade	Art Elements Art Principles
8th Grade	Art Ideas Art Methods

Music Electives

5th Grade	Music 5
6th Grade	Band 6 Music 6
7th Grade	Band 7 Chorus 7 Music 7
8th Grade	Band 8 Chorus 8 Vocal Tech (must audition)

Theater

5th & 6th Grade	Play (must audition, extracurricular)
7th & 8th Grade	Musical (must audition, extracurricular)

Physical Education & Health

5th Grade	Fitness 5
6th Grade	Fitness 6
7th Grade	Health/Fitness 7
8th Grade	Health/Fitness 8

Mathematics

Grade	Required	Elective
5th Grade	Math 5	
6th Grade	Math 6 or Math 6 Accelerated **	
7th Grade	Math 7 or Math Pre-Algebra 7**	
8th Grade	Math 8 or Math Algebra 8**	

**** Entry based on selection process**

Science

5th Grade	Science 5
6th Grade	Science 6
7th Grade	Science 7
8th Grade	Science 8

Social Studies

Grade	Required	Elective
5th Grade	Social Studies 5	
6th Grade	Social Studies 6	
7th Grade	Social Studies 7	Pre-Spanish
8th Grade	Social Studies 8	Spanish 1

5th through 8th Grade Course Descriptions

5th/6th Grade

CORE REQUIREMENTS

Year Long (required)

The courses for English-Language Arts, Math, Science, and Social Studies are aligned with Nebraska Standards.

Please visit the following link:

**[https://www.education.ne.gov/
AcademicStandards/index.html](https://www.education.ne.gov/AcademicStandards/index.html)**

MATH 6 ACCELERATED (must qualify) Year-Long / Required

The learning goals for this course are intended to fully meet the NE Math content standards for 6th grade and a portion of 7th grade in one academic year. Topics for this course relate to number sense, algebra, geometry, and data analysis concepts. Students placed at the accelerated level can quickly draw from previous learning to make connections to new learning, and thus need less review, practice, and time to reach proficiency of new math concepts. Due to the combined nature of the two courses, lessons are integrated in order to learn more material. Mathematical practices are connected to math content helping students to solve a variety of problems independently. Successful completion of this course will prepare students for Math 7-8 Accelerated.

5th Grade

Exploratory Classes

ART 5

1 Quarter

In Art 5 students will learn the basics of various art media and art elements. Students will use a variety of art media which may include paint, pastel, clay, pencil and paper, and more. Students will apply their knowledge of the art elements and art media to create unique and exciting projects.

FAMILY AND CONSUMER SCIENCES 5

1 Quarter

Students will explore the different themes of family and consumer science in this course. These themes include food and nutrition, peer and family relationships, textiles, sewing and design, personal finance, and careers. Students will participate in project-based learning opportunities to explore these themes.

COMPUTER SKILLS 5

1 Quarter / Required in either 5th OR 6th grade

Students in this class will focus on typing technique. Students will demonstrate appropriate keyboarding skills using home row keys, proper finger placements, and key reaches. Students will spend time learning about and practicing digital citizenship. Students will demonstrate ethical behavior when using technology. Students will learn the various ways to use the Google Suite.

MUSIC 5

Yearlong / Required

This is a year long class. Students will learn basic elements, theory, composition, musicals, how to play piano along with improving vocal techniques and part singing. There will be one performing opportunity required for this class.

STEM 5

2 Quarters of the Following Required

DRAFTING 5

1 Quarter

Students will be challenged with a storyline in order to solve a structural problem by implementing the Science and Engineering Practices.

ENGINEERING 5

1 Quarter

Students will be challenged with a storyline in order to solve an energy problem by implementing the Science and Engineering Practices.

MANUFACTURING 5

1 Quarter

Students will be challenged with a storyline in order to solve a design problem by implementing the Science and Engineering Practices.

6th Grade

Exploratory Classes

ART 6

1 Quarter

In Art 6 students will learn the basics of various art media and art principles. Students will use a variety of art media which may include paint, pastel, clay, pencil and paper, and more. Students will apply their knowledge of the art principles and art media to create unique and exciting projects.

FAMILY AND CONSUMER SCIENCES 6

1 Quarter

Students will explore the different areas of family and consumer science in this course. Units covered include; Food and Nutrition, Finance, Healthy Relationships, Sewing, Basic Childcare and Careers. Students will apply their knowledge of these units to create unique hands on projects.

COMPUTER SKILLS 6

1 Quarter / Required in either 5th OR 6th grade

Students in this class will focus on typing technique. Students will demonstrate appropriate keyboarding skills using home row keys, proper finger placements, and key reaches. Students will spend time learning about and practicing digital citizenship. Students will demonstrate ethical behavior when using technology. Students will learn the various ways to use the Google Suite.

MUSIC 6

Yearlong / Required

This is a year long class. Students will learn basic elements, theory, composition, musicals, how to play Orff instruments along with improving vocal techniques and part singing. There will be one performing opportunity required for this class.

STEM 6

2 Quarters of the Following Required

DRAFTING 6

1 Quarter

Students will be challenged with a storyline in order to solve a structural problem by implementing the Science and Engineering Practices.

ENGINEERING 6

1 Quarter

Students will be challenged with a storyline in order to solve an energy problem by implementing the Science and Engineering Practices.

MANUFACTURING 6

1 Quarter

Students will be challenged with a storyline in order to solve a design problem by implementing the Science and Engineering Practices.

Elective Class

BAND 6

Year-Long / Elective

This class will provide students with the opportunity to learn a musical instrument. No previous instrumental experience is necessary. All students will be expected to perform in two evening concerts, one in the fall semester and the other in the spring semester. Students will then automatically be placed in 7th grade band unless unenrolled by a parent/guardian.

7th Grade

CORE REQUIREMENTS

Year Long (required)

HEALTH/FITNESS 7

Year-Long / Required

This class is a combination of health and fitness concepts. Students will learn about prevention of drug, alcohol, and tobacco use; healthy foundations and wellness; consumerism and media influences on your health; personal fitness development; dynamic and static stretches of muscles; and personal fitness development focusing on muscular strength/endurance and aerobic capacity.

LANGUAGE ARTS 7

Year-Long / Required

Students in seventh grade Language Arts will read a variety of fiction and nonfiction texts relating to various genres. The texts will include high-interest novels, short stories, and informational articles. Students will interact with the text by analyzing various literature concepts, author's purpose, literary devices, and text elements. Learning to summarize as well as answering literal and inferential questions will be a focus of this course. Using a variety of context clue strategies, students will build their vocabulary in order to construct meaning from text. Students will apply the writing process to write in a variety of modes and genres.

MATH 7

Year-Long / Required

The learning goals for this course meet the NE Math content standards for 7th grade by helping students understand the basic structure of mathematics and develop ever-increasing mathematical ability. They will investigate and strengthen their skills in number sense, algebra, geometry, and data analysis. Students learn to collaborate with others, share information, and justify their thinking and ideas through College and Career Readiness practices.

Course Expectations: Students are expected to actively participate in lessons, complete assignments on time, and demonstrate their understanding through assessments.

MATH Pre-Algebra 7 (must qualify)

Year-Long / Required

The learning goals for this course meet the NE Math content standards for a portion of 7th grade and 8th grade in one academic year. Students will investigate and strengthen their skills in number sense, algebra, geometry, and data analysis concepts. Students placed at the accelerated level can quickly draw from previous learning and make connections to new learning. Due to the combined nature of this course, lessons are integrated to learn more material. Students collaborate with others as well as work independently to justify their thinking and ideas through College and Career Readiness practices. Successful completion of this course will prepare students for Algebra I.

Course Expectations: Students are expected to actively participate in lessons, complete assignments on time, and demonstrate their understanding through assessments.

7th Grade

SCIENCE 7

Year-Long /Required

This is an integrated science course, which includes units on Physical Science, Life Science, and Earth Science. The Earth Science portion will delve into geoscience processes, large and small, and how they impact Earth. The Physical Science portion will have students looking at the structure of matter, chemical reactions, and the chemistry behind photosynthesis. The Life Science part of the year will focus on ecosystems, biodiversity, and ecosystem threats. Throughout the entire year the students will be using different science and engineering practices and crosscutting concepts when showing proficiency in each standard.

SOCIAL STUDIES 7

Year-Long / Required

This social studies course focuses on the Middle Ages across the world. We will use Geography skills, Historical Research Skills and Critical Thinking Skills to study Medieval cultures of Africa, Europe, South and Central America and the Middle East.

Exploratory Classes

COMPUTER SKILLS 7

1 Quarter / Computer Skills 7 OR Computer Science 7 Required

Computer Skills 7 allows students to expand their knowledge and understanding of basic computer functionality while working to advance their skills using the Google Suite. Students will gain experience using word processing, presentations, and spreadsheets. Responsible use and digital etiquette will continue to be a focus in this course.

COMPUTER SCIENCE 7

1 Quarter / Computer Skills 7 OR Computer Science 7 Required

Computers Science focuses on learning various aspects of computer programming. Students will learn about the fundamentals of coding and complete a unit in block coding. Students will be introduced to other coding languages and will gain experience in python and/or javascript coding.

STEM 7

2 Quarters of the Following Required

DRAFTING 7

1 Quarter

Students will be challenged with a storyline in order to solve a structural problem by implementing the Science and Engineering Practices.

ENGINEERING 7

1 Quarter

Students will be challenged with a storyline in order to solve an energy problem by implementing the Science and Engineering Practices.

MANUFACTURING 7

1 Quarter

Students will be challenged with a storyline in order to solve a design problem by implementing the Science and Engineering Practices.

Elective Classes

PRE-SPANISH

1 Quarter

This class will introduce material that will be used in Spanish I (8th grade). The purpose of this class is to make the transition easier to Spanish I and to help students gain an understanding of learning a world language. Upon successful completion of this class, students will be able to enter Spanish I (8th grade).

7th Grade

Elective Classes

ART ELEMENTS

1 Quarter / Elective

This art class offers art at a more advanced level and would be a suggested course for students interested in creating more advanced art. Art Elements focuses on the Elements of Art: color, form, line, shape, space, texture, and value. Materials used may include clay, paper and pencil, paint, and more. Projects are subject to change based on the teacher's discretion.

ART PRINCIPLES

1 Quarter / Elective

This art class offers art at a more advanced level and would be a suggested course for students interested in creating more advanced art. Art Principles focuses on the Principles of Art: Balance, emphasis, movement, proportion, space, unity, and pattern. Materials used may include clay, paper and pencil, paint, and more. Projects are subject to change based on the teacher's discretion.

BAND 7

Year-Long / Elective

This class is open to all students who took band in 6th grade or have previous experience playing a band instrument. This class will advance the skills learned in 6th grade so students must have prior experience playing an instrument to enroll. If a student does not take band in 6th grade and wants to join in 7th grade, students must take lessons outside of school to advance their skills. Students in this class will perform in 2 formal concerts one in the fall and one in the winter. Students will also be eligible to audition for honor bands and other clinics if they wish. Students will automatically be placed in 8th grade band unless unenrolled by a parent/guardian.

CHORUS 7

Semester / Elective

Chorus class is designed to give students an experience in part singing and performance. Styles of music covered will vary and include pop, contemporary, and traditional. This class is designed for the student who enjoys singing and desires to explore the potential in their singing voice. A minimum of 2 performing opportunities will be given each semester. This is a semester class, which may be repeated the 2nd semester if the student chooses.

FASHION AND FINANCE 7

1 Quarter / Elective

Fashion & Finance focuses on the allocation of money in a budget and the use of sewing supplies. Students will learn how to develop consumer skills that help make smart financial decisions. This class goes deeper into the sewing techniques than 6th grade FCS. You will learn and practice new sewing techniques in the creation of your sewing project.

FOODS AND FAMILY 7

1 Quarter / Elective

In this class students will learn the basics of good nutrition. Students will prepare recipes from different food groups. They will become familiar with kitchen equipment and how to prepare a recipe in the kitchen. Students will get to practice safe and sanitary work habits. Students will identify personal skills necessary to build positive relationships.

GENERAL MUSIC

1 Quarter / Elective

This is a non-performance music class that lasts one quarter. We will study how to read and write Music in a variety of time signatures, compose original songs, listen in depth to a variety of music genres and movie soundtracks/scores and create their own original movie score. Students who sign up for this class should have a desire to learn about music history and basic music theory.

8th Grade

CORE REQUIREMENTS

Year-Long

HEALTH/FITNESS 8

Year-Long / Required

In this class, students will study health and fitness-related concepts and the correlation between the two areas. Typical areas of study will include: prevention of drug, alcohol and tobacco use; mental and emotional health; nutrition; growth and development; dynamic and static stretches of muscles; and personal fitness development focusing on muscular strength/endurance and aerobic capacity.

LANGUAGE ARTS 8

Year-Long / Required

Students in English Language Arts will read and analyze fiction and nonfiction texts of various genres through short stories, informational articles, and novels. Figurative language, central ideas, points of view, and themes are a few of the literary concepts that will be analyzed. Students will primarily focus on informative and persuasive writing tasks that clearly convey ideas, information, and concepts.

MATH 8

Year-Long / Required

The learning goals for this course are intended to fully meet the NE Math content standards for 8th grade, investigating number sense, algebra, geometry, and data analysis. The course is balanced among questioning, algorithms, deep conceptual understanding, problem solving, and adaptive reasoning for students to justify and communicate their thinking. Under teacher guidance, students learn to collaborate with others while sharing information, expertise, and ideas. The activities embed the 8 Mathematical Practices with math content helping students to practice the thinking processes necessary for a deeper understanding of math.

MATH ALGEBRA 8

Year-Long

(must qualify)

The learning goals for this course are intended to fully meet the NE Math content standards for high school Algebra. This course deepens and extends student understanding built in previous courses by focusing on developing fluency with solving linear equations, inequalities, systems, and data. These skills are extended to solving quadratic equations and exploring linear, quadratic, and exponential functions. Mathematical practices are connected to algebra content helping students to solve a variety of problems independently. Algebra is the first class in the traditional college preparatory sequence.

SCIENCE 8

Year-Long / Required

This course will begin with a unit on the scientific method. The culmination of this unit will be a science fair project and presentation. Students will also learn about basic cell structure, mitosis, explore differences in types of cells, and genetics during the life science unit. They will study physics by investigating energy and Newton's 3 Laws of Motion. Students will complete a unit of chemistry and investigate chemical changes and their reactions, properties of matter, atomic structure, and properties and uses of metals, nonmetals, and metalloids.

SOCIAL STUDIES 8

Year-Long / Required

This course offers a look at U.S. history, government, geography, and economics from the creation of the nation through the Progressive Era. Students will analyze primary sources, engage in critical thinking, and utilize the inquiry process to investigate key historical events, cultural developments, and civic concepts. Learners will develop the skills necessary to evaluate evidence, draw conclusions, and apply knowledge to real-world scenarios. The curriculum emphasizes active participation, encouraging students to become informed and responsible global citizens.

8th Grade

Exploratory Classes

STEM 8

2 Quarters of the Following Required

DRAFTING 8

1 Quarter

Students will be challenged with a storyline in order to solve a structural problem by implementing the Science and Engineering Practices.

ENGINEERING 8

1 Quarter

Students will be challenged with a storyline in order to solve an energy problem by implementing the Science and Engineering Practices.

MANUFACTURING 8

1 Quarter

Students will be challenged with a storyline in order to solve a design problem by implementing the Science and Engineering Practices.

Elective Classes

ART IDEAS

1 Quarter / Elective

This class focuses on new and current trends in the art world that have developed into the last 50 years. Students may create works using both digital and experimental mediums. Artwork in this class will focus more on creating thoughtful and meaningful compositions versus function. 8th grade art classes encourage more freedom and choice when creating artwork, and with this a high level of maturity and interest is required.

ART METHODS

1 Quarter / Elective

Art Methods focuses on more traditional art methods used in the art world throughout history. Students may learn various techniques such as using a printing press, painting, drawing, and creating art that serves a function. 8th grade art classes encourage more freedom and choice when creating artwork, and with this a high level of maturity and interest is required.

BAND 8

Year-Long / Elective

This class is open to all students who took band in 6th and 7th grade or have previous experience playing a band instrument. This class will advance the skills learned in 7th grade so students must have prior experience playing an instrument to enroll. If a student does not take band in 6th or 7th grade and wants to join in 8th grade, students must take lessons outside of school to advance their skills. Students in this class will perform in a winter and spring concert, a possible clinic day and/or concert band festival, and will have an opportunity to perform for a basketball game. Students will also have the opportunity to audition for various area honor bands. Students will then be eligible to join band in high school by completing this course.

CHILD DEVELOPMENT AND CARE 8

1 Quarter / Elective

Students will learn about the different ages and stages of childhood development: infants, toddlers, preschoolers, and school-age children. Students will study how children grow and develop, and how to keep them safe. This class is for those looking to take more parenting and life skills classes in high school.

8th Grade

CHORUS 8

Semester / Elective

Chorus class is designed to give students an experience in part singing and performance. Styles of music covered will vary and include pop, contemporary, and traditional. This class is designed for the student who enjoys singing and desires to explore the potential in their singing voice. A minimum of 2 performing opportunities will be given each semester. This is a semester class, which may be repeated the 2nd semester if the student chooses.

COMPUTER SCIENCE 8

1 Quarter / Elective

Computer Science focuses on learning various aspects of computer programming. Students will learn about the fundamentals of coding and complete a unit in python and/or javascript coding. Students will be introduced to other coding languages and will gain experience in web development.

DIGITAL MEDIA 8

1 Quarter / Elective

Digital Media introduces students to creative and responsible use of digital tools for communication and design. Students explore graphic design, image editing, animation, video production and basic web development. Through hands on digital projects, students create media for a variety of audiences and purposes while learning design principles, media literacy and digital citizenship.

FASHION AND FINANCE 8

1 Quarter / Elective

Fashion & Finance focuses on budgeting vocabulary with writing and using checks, in addition to the fashion unit on the designing process. This class goes deeper into color theory using the elements and principles of design. Draping, pattern making, fashion sketches and portfolios are some possible projects.

FOODS AND FAMILY 8

1 Quarter / Elective

Students will learn the basics of making healthy eating choices. Students will prepare foods from different meals of the day. They will become familiar with kitchen equipment and how to prepare a recipe in the kitchen. They will explore kitchen management and meal planning. Students will identify personal skills necessary to build positive relationships.

VOCAL TECH 8

Year-Long / Elective

(must audition)

This is a higher-level voice class that will involve the in-depth study of the voice and small ensemble singing. Students enrolled in this class must possess a sincere desire to sing. Students will study how the voice functions, techniques to improve the quality of the voice, and advanced styles of A cappella, classical, and pop literature. There will be opportunities for students to sing at State Contests and Festivals and several other public performance opportunities. Students must audition to be admitted in this class. Students in this class will also be a specialized WIN time during Semester 1 and a year long advisory class.

SPANISH I

Year-Long / Elective

Prerequisite: Middle School students enrolling in Spanish I, must have a C average or higher in both the first semester and second semester of 7th grade English.

In this class, you will dive into the Spanish language. You will be expected to memorize vocabulary, incorporate vocabulary in class, and conjugate a variety of verbs. Upon successful completion of this class, students will be able to enter Spanish II in high school.

Special Programs

5th through 8th Grade

READING SKILLS - Grades 5 & 6

1 Quarter (repeated as needed)

This course is designed to provide extra instruction and support needed to improve students' reading skills. It is an extra reading class in addition to the student's regular Language Arts class. The DIBELS Reading assessment and Core Phonics Survey are used to determine areas of needed improvement. The lessons are focused on improving students' phonics and fluency skills.

English Language Learner

ELL MATH 5-8 (must qualify) Year-Long / Required

ELL Math 5-8 is a general course in mathematics for English Language Learners. Students will learn basic operations with whole numbers, decimals, and fractions. Topics such as place value, measurement, number theory, ratios and proportions, integers, graphs, and estimation strategies will be studied. Sheltered instruction in English and increased attention to vocabulary will be used for instruction. Newcomers (less than 1 year of English language instruction) may have bilingual support to increase understanding of math concepts. The focus will be on the acquisition of mathematical terms in the English language.

ENGLISH LANGUAGE DEVELOPMENT A (5-8) (must qualify)

This course is designed for recently arrived students (students who are new to schools in the U.S.) The purpose of this course is to develop basic English skills in the categories of speaking, listening, writing and reading. Time Zones Starter and Level 1 materials will be used in this course.

ENGLISH LANGUAGE DEVELOPMENT B (5-8) (must qualify)

This course is designed for recently arrived students who have passed or tested out of English Language Development A. The purpose of this course is to develop English skills in the categories of speaking, listening, writing and reading. Time Zones Level 2 materials will be used in this course.

EL LANGUAGE ARTS (5-8) (must qualify)

This course is a Language Arts class designed for EL students who have passed or tested out of English Language Development courses for recently arrived students. Sheltered instruction will be used in this class to simultaneously improve English Language Arts skills (reading, writing, spelling) and English language skills in the domains of listening, reading, speaking and writing. This is a “bridge course” for students who have English skills beyond those of students in recently arrived classes, but still need some development in skills prior to joining regular Language Arts courses.

High Ability Learner

DISCOVERY 7

(must qualify)

1 Quarter / Elective

Discovery 7 is a class for students identified for the Gifted and Talented Program at Columbus Middle School. (Students identified for the Discovery High Ability program at the elementary level or at the 6th grade level are already identified for the Middle School Program.) The activities in the class include: logical thinking, critical thinking, creative thinking, and computer applications. Students will apply research, mathematical and writing skills to complete several projects.

DISCOVERY 8

(must qualify)

1 Quarter / Elective

Discovery 8 is a class for students identified for the Gifted and Talented Program at Columbus Middle School. (Students identified for the Discovery high ability learner program at the elementary level are already identified for the Middle School Program.) The units in the class include: logical & creative thinking, intro to economics, vector drawing, and problem solving.

Special Education

BEHAVIOR SUPPORT PROGRAM DESCRIPTION

Year-Long

Prerequisite: IEP Team Decision

The Behavior Support Program focuses interventions on the social, emotional and behavioral needs of students while providing instruction to support the students' participation and progress in the general curriculum. Behavior intervention plans will be individualized to meet the needs of each student. Students will be integrated into general education classrooms whenever possible.

HIGH NEEDS PROGRAM

Year-Long

Prerequisite: IEP Team Decision

The High Needs Program is a specialized placement for students with significant intellectual, communication, and possible mobility disabilities who need opportunities to develop basic functional communication skills; along with, skills that they will need in everyday life (life skills) as modified to the student's ability. The High Needs Program includes a higher level of staff support (small teacher to student ratio for increased supervision, para support, safety awareness, and more intensive support in demonstrated areas of need).

Students that participate in the High Needs Program may work on bathroom skills, self-feeding, communicating own needs/wants (whether verbal, nonverbal communication, via an electronic device, etc.), regulation of sensory needs, basic functional academics depending on student ability, following simple instructions, basic/functional fine/gross motor skills depending on need/ability, simple vocational/work activities (Examples: delivering messages within building with supports, shredding paper with support, etc.), simple/functional social skills, behavioral skills, etc. All interventions are selected by the demonstration of a student's individual needs.

Students that participate in the High Needs program receive an education within a special education classroom, but have opportunities with their general education peers throughout the day such as but not limited to: band, music, lunch, structured general education peer role modeling, etc. based on student ability.

Placement into the High Needs Program is an IEP team decision and is based on specific student needs and discussions regarding the placement that can meet those needs most appropriately in the least restrictive environment. The decision is made after a thorough review of the IEP components which may include present levels of performance, goals/objectives, accommodations, modifications, supplementary aids and services, state and district assessments, behavior intervention plans, teacher and parental input, and results from any previous/current evaluations.

CURRICULUM LIFE SKILLS PROGRAM (CLSP)

Year-Long

Prerequisite: IEP Team Decision

This program is designed to equip students with basic skills they will need to be successful in today's society. The program is individualized for each student based upon his or her Individualized Education Program goals.

CURRICULUM LIFE SKILLS MATH

The main goal of our math program is to develop competency in the four basic functions of addition, subtraction, multiplication, and division for positive, whole numbers. Identifying coins by name and value as well as adding money and making change. They will be introduced to basic story problem that deal with everyday issues. They will also be able to build on their time telling skills. Students will also be exposed to and using fractions and patterns. Other math topics will be covered based on the students need.

Extracurricular Activities

5th/6th

After-Hours Program
Cheer (6th)
Destination Imagination
Drumline
Flag Football (6th)
Intramural Volleyball (6th)
Musical (6th)
Play

7th/8th

After-Hours Program
Art Club
Basketball (boys & girls)
Cheer
Destination Imagination
Drumline
Football
Mathcounts
Musical
Student Council
Talent Show
Track (boys & girls)
Volleyball
Wrestling (boys and girls)
Yearbook (8th)

AFTER-HOURS PROGRAM (after-school program) in partnership with Communities-Together-Can Quarterly

After-Hours is an after-school program that focuses on enriching students' lives through a variety of workshops offered in a safe and inviting atmosphere. Inclusion, respect and social responsibility are key elements of this program. Before and after workshop time, tutors are available to help with students' homework. Each quarter, students are offered the opportunity to select one or two workshops in an area that they are interested. An example of workshops offered could include: robotics, cooking, dodge ball, or drawing. Each workshop meets a total of fifteen times during the quarter. Information sheets go out to all students each quarter. The program operates Monday, Tuesday, and Thursday until 6:00 p.m., and Wednesday until 5:30 p.m. Each workshop charges a one-time \$6 material fee.

- * Replace Dr. Loeffelholz with Dr. Kay
- * Update admin office address
- * Update counselor grade level
- * Include LMHP, Psychologist, Nurses under staff assignments
- * Update bell schedules
- * Added 7th grade Pre-Spanish elective description
- * Changed class name for 5th and 6th **Reading Language Arts/Writing** class to **Language Arts 5 and Language Arts 6**

* Here are the math course offerings:

5th Grade: Math 5

6th Grade: Math 6 OR Math 6 Accelerated

7th Grade: Math 7 OR Math Pre-Algebra 7

8th Grade: Math 8 or Math Algebra 8

Changes would take place:

pg 10, the table (change names for 6, 7, 8)

pg 12, take Math 6-7 accelerated off of 5/6 grade and put "Math 6 Accelerated" for 6th grade

pg 15, change name to "Math Pre-Algebra 7"

pg 19 change name to "Math Algebra 8"

* **NEW - Digital Media 8** introduces students to creative and responsible use of digital tools for communication and design. Students explore graphic design, image editing, animation, video production, and basic web development. Through hands-on digital projects, students create media for a variety of audiences and purposes while learning design principles, media literacy, and digital citizenship.

OLD - DIGITAL MEDIA 8

1 Quarter / Elective

Digital Media provides students with opportunities to learn valuable graphic design skills using an online design platform. Students will explore image editing and photography skills, and be introduced to image manipulation. This class will also briefly cover video production, media collaboration, media analysis, and web page creation.



Columbus Public Schools Preschool Schedule & Instructional Enhancement Proposal

Submitted by: Erin Meyer, Principal, Kramer Education Center
Date: December 8, 2025

1. Summary of Proposal

Kramer Education Center's current Preschool schedule presents challenges related to instructional equity, supervision during transitions, and alignment with early childhood best practice. Under the current structure, some students lose up to 40 minutes of instructional time per day due to meal-related transitions, while staff supervision is stretched across multiple locations at critical times of the day.

This proposal recommends a revised Preschool schedule designed to:

- Protect instructional time
- Improve supervision and safety
- Align with Rule 11 requirements
- Support high-quality curriculum implementation

Additionally, this proposal includes a request to increase paraeducator hours from 32 to 33 hours per week to support Rule 11 required professional development, collaboration, and supervision needs.

2. Why a Change Is Needed

The current PreK schedule was designed to support food access for students; however, it has resulted in several unintended challenges:

- Instructional Time Loss
 - Morning students who eat both breakfast and lunch lose approximately 40 minutes per day

- Afternoon students who eat lunch lose 10–15 minutes per day
This creates inequitable learning opportunities between students
- Supervision & Safety Concerns
 - During high-transition times, paras are responsible for meal supervision, bus unloading, hallway monitoring, and SPED supports simultaneously
 - Teachers are expected to begin instruction and morning meeting without adequate adult support
- Developmental Considerations
 - The current structure requires some students to consume two full meals and a snack within a 3.5-hour session, which exceeds developmental norms and contributes to food waste

As Kramer continues implementing Frog Street curriculum and working toward building-wide instructional goals, protecting Tier 1 instructional time and improving adult support during transitions has become increasingly important.

3. Proposed Schedule Change

Morning Session

- 7:30 – Doors open for breakfast
 - All morning session students start with breakfast at 7:30
 - Families can choose school breakfast or pack a breakfast item from home
 - Meal times are counted as instructional time per Rule 11
- 11:15 – Dismissal

Afternoon Session

- 11:45–Doors open for lunch
 - All afternoon session students start with lunch at 11:45
 - Families can choose school lunch or pack a lunch from home
 - Meal times are counted as instructional time per Rule 11
- 3:30- Dismissal

Key structural change:

Elimination of the morning lunch period, allowing morning students to remain in instruction through dismissal. All students participate in meal time to build relevant social skills.

4. Benefits of the Proposed Schedule

Instructional Equity

- Morning students regain approximately 40 minutes of instructional time per day
- Afternoon students regain 10–15 minutes per day
- More consistent access to Tier 1 instruction across sessions

Improved Supervision & Safety

- Paras and teachers are available together at the start of each session
- Reduced need for staff to be in multiple locations simultaneously
- Improved support for SPED services during instructional blocks

Alignment with Early Childhood Best Practice

- Fewer transitions during core learning time
- More predictable routines for students
- Improved conditions for language development and engagement

5. Paraeducator Hour Adjustment (32 → 33 Hours)

Paras affected: 13

To support program expectations and compliance, an increase of one additional hour per week is requested to allow time for:

- Rule 11–required early childhood professional development
- Curriculum training (Frog Street)
- Collaboration with teachers and SPED providers
- Data review and documentation
- Safety and supervision training

This adjustment provides structured, intentional time for paras to meet expectations without extending instructional transitions or reducing classroom support.

Closing

These adjustments allow Kramer Education Center to better protect instructional time, strengthen supervision, and align PreK programming with early childhood best practice. Most importantly, they support a consistent, equitable, and developmentally appropriate learning environment for our youngest students.

BOARD OF EDUCATION
PLATTE COUNTY SCHOOL DISTRICT 0001
a/k/a COLUMBUS PUBLIC SCHOOLS

Columbus, Nebraska

RESOLUTION NO. _____

A RESOLUTION APPROVING SUPERINTENDENT OUTSIDE BUSINESS ACTIVITY

WHEREAS, Dr. Chip Kay serves as Superintendent of Columbus Public Schools pursuant to the Contract of Employment with Superintendent executed on June 16, 2025, for a term beginning July 1, 2025, and expiring June 30, 2028; and

WHEREAS, Section 4 of the Superintendent Employment Contract provides that the Superintendent agrees to devote full time to the assigned duties, provided that with the advance agreement of the Board of Education, the Superintendent may undertake consultative work, speaking engagements, writing, lecturing, or other professional duties; and

WHEREAS, Board Policy 302.08 (Superintendent Consulting/Outside Employment) permits the Superintendent to accept consulting or outside employment for pay as long as, in the judgment of the Board, the work is conducted on the Superintendent's personal time and does not interfere with the performance of the Superintendent's duties; and

WHEREAS, Board Policy 402.02 (Employee Conflict of Interest) requires that employees earning more than one hundred fifty thousand dollars (\$150,000) annually in salary and benefits who may receive financial benefit from an outside activity must provide full disclosure of the activity to the Board and obtain prior approval; and

WHEREAS, Board Policy 305.01 (Administrator Code of Ethics) requires that administrators disallow consideration of private gain or personal economic interest from affecting the discharge of professional responsibilities; and

WHEREAS, Dr. Chip Kay has submitted to the Board of Education a written request for approval to establish and operate School Financial Services, LLC, a limited liability company engaged in the development of school finance and budgeting software for use by school districts; and

WHEREAS, Dr. Kay has represented that all activities related to School Financial Services, LLC will be conducted exclusively on personal time, outside of regular work hours, and will not interfere with the performance of his duties as Superintendent; and

WHEREAS, the Board of Education has reviewed the request and finds that, subject to appropriate conditions and limitations, approval of this outside business activity is consistent with Board Policy and the Superintendent Employment Contract.

NOW, THEREFORE, BE IT RESOLVED by the Board of Education of Platte County School District 0001, a/k/a Columbus Public Schools, as follows:

Section 1. Approval of Outside Business Activity.

The Board of Education hereby grants advance agreement and approval, pursuant to Section 4 of the Superintendent Employment Contract and Board Policy 302.08, for Dr. Chip Kay to establish and operate School Financial Services, LLC, a limited liability company engaged in the development and provision of school finance and budgeting software for school districts, subject to the conditions and limitations set forth in this Resolution.

Section 2. Conditions and Limitations.

The approval granted herein is subject to the following conditions and limitations, which Dr. Kay shall observe at all times:

1. **Personal Time Only.** All activities related to School Financial Services, LLC shall be conducted exclusively on Dr. Kay's personal time, including evenings, weekends, holidays, and vacation days. No activities shall be conducted during regular work hours or at times when Dr. Kay's presence is required for the performance of his duties as Superintendent.
2. **No Interference with Duties.** Activities related to School Financial Services, LLC shall not interfere with the performance of Dr. Kay's duties as Superintendent, including but not limited to attendance at Board meetings, committee meetings, school functions, and other duties set forth in the Employment Contract and Board Policy.
3. **No Use of District Resources.** Dr. Kay shall not use Columbus Public Schools' time, facilities, equipment, supplies, personnel, or other resources in connection with School Financial Services, LLC. This includes, but is not limited to, computers, phones, office space, copiers, vehicles, and support staff.
4. **No Use of Position or Official Authority.** Dr. Kay shall not use his position as Superintendent, the District's name, badge, business cards, letterhead, or other evidence of office to promote, market, or advance the interests of School Financial Services, LLC.
5. **No Transactions with Columbus Public Schools.** School Financial Services, LLC shall not enter into any contract, agreement, or transaction with Columbus Public Schools or any entity over which Dr. Kay exercises official control, inspection, review, audit, or enforcement authority in his capacity as Superintendent.
6. **Protection of Confidential Information.** Dr. Kay shall not use confidential or proprietary information obtained through his position as Superintendent to benefit School Financial Services, LLC or its clients. This includes, but is not limited to, non-public financial data, student information, personnel records, and strategic planning documents.
7. **No Solicitation of District Employees or Students.** Dr. Kay shall not solicit District employees, students, or parents for the purpose of promoting or conducting business related to School Financial Services, LLC.
8. **Compliance with Board Policy and Employment Contract.** Dr. Kay shall at all times comply with the terms and conditions of his Employment Contract, Board Policy 302.08,

Board Policy 402.02, Board Policy 305.01, and all other applicable policies, rules, and regulations of Columbus Public Schools and the State of Nebraska.

9. **Annual Reporting.** Dr. Kay shall provide to the Board President, on an annual basis by July 1 of each year, a brief written report confirming continued compliance with the conditions set forth in this Resolution and noting any material changes to the nature or scope of School Financial Services, LLC's operations.

Section 3. Board Reserved Rights.

The Board of Education reserves all rights provided under Board Policy 302.08 and the Superintendent Employment Contract, including but not limited to the right to request that Dr. Kay cease the outside business activity as a condition of continued employment, with thirty (30) days written notice, if the Board determines, in its judgment, that the activity interferes with the performance of Dr. Kay's duties as Superintendent or is otherwise inconsistent with Board Policy.

Section 4. Acknowledgment.

Dr. Kay shall sign an acknowledgment indicating that he has received a copy of this Resolution, understands the conditions and limitations set forth herein, and agrees to comply with all terms of this Resolution.

Section 5. Effective Date.

This Resolution shall take effect immediately upon adoption by the Board of Education.

ADOPTED this _____ day of _____, 2026, by the Board of Education of Platte County School District 0001, a/k/a Columbus Public Schools.

President, Board of Education

ATTEST:

Secretary, Board of Education

RECORD OF VOTE:

Ayes: _____
Nays: _____
Abstentions: _____
Absent: _____

SUPERINTENDENT ACKNOWLEDGMENT

I, Dr. Chip Kay, hereby acknowledge that I have received a copy of Resolution No. _____ adopted by the Board of Education of Platte County School District 0001, a/k/a Columbus Public Schools, on the _____ day of _____, 2026, approving my outside business activity related to School Financial Services, LLC.

I have read and understand all conditions and limitations set forth in the Resolution, and I agree to comply with all terms thereof. I understand that failure to comply with the conditions and limitations may result in the Board exercising its reserved rights, including the right to request that I cease the outside business activity as a condition of continued employment.

I further acknowledge that this approval is specific to School Financial Services, LLC as described in the Resolution, and that any material change in the nature or scope of the business, or any additional outside business activity, may require separate approval from the Board of Education.

Dr. Chip Kay, Superintendent

Date: _____



Columbus Public Schools

Date: _____

School Fundraising Application

Please submit this application to the building principal **at least two weeks in advance** of the proposed date of your money-raising project. Please read the eight guides on page two. They will help you in answering the questions below.

School: _____ Name: _____

Fund Raising Company (if applicable):

(School/Group Name), submits the following plans for its money-earning project, and requests permission to carry them out.

What is your school/group's money-earning plan?

Approximately how much does your school/group expect to earn from this project?

How will this money be used?

What are the proposed dates?

Is this a recurring activity? Yes No
(If you selected yes, please specify the dates on which the activity will occur during the next twelve months.)

Are you selling tickets or a product? Tickets Product Neither
(If you selected product, please specify the product that you are selling.)

Will members be identified by t-shirts, etc. while carrying out this project? Yes No

Have you checked with other schools to avoid any overlapping while working? Yes No

Is your product/service in direct conflict with that offered by local merchants? Yes No

Are any contracts to be signed? Yes No **If yes, by whom?**

Has your school/group devised a budget plan to expend earnings? Yes No

Does the building principal give full approval for this plan? Yes No

Principal's Signature _____ **Date** _____

(for district use only)

Approved by _____ Date _____

Approved subject to the following conditions _____

GUIDES TO SCHOOL/GROUP FUND RAISING PROJECTS

A school/group's money-earning methods should reflect basic values. Whenever your school or group is planning a money-earning project, this checklist should serve as your guide. If you answer "Yes" to all the questions that follow, it is likely the project conforms to district standards and will be approved.

1. **Do you really need a fund raising project?**
There should be a real need for raising money based on your school's programs. Groups should not engage in money-earning projects merely because someone has offered an attractive plan. Remember that individual students are expected to earn their own way. The need should be beyond normal budget items covered by building budgets.
2. **If any contracts are to be signed, will they be signed by an individual without reference to the Columbus Public Schools or the Board of Education?**
Before any person in your school/group signs a contract, he/she must make sure the venture is legitimate and worthy. If a contract is signed, he/she is responsible. He/she may not sign on behalf of Columbus Public Schools nor may he bind the Board of Education without its written authorization. If you are not sure, check with the Director of Business.
3. **Will your fund raiser prevent promoters from trading on the name and goodwill of Columbus Public Schools?**
Because of the district's good reputation, customers rarely question the quality or price of products we sell.
4. **Will the fund raising activity uphold the good name of Columbus Public Schools? Does it comply with the district's policy on games of chance and gambling?**
All items sold or awarded in connection with a fund raising activity must not detract from the ideals and principles of Columbus Public Schools and its Board of Education. Holding a lottery with gross proceeds in excess of \$1,000, a raffle with gross proceeds in excess of \$5,000, or other games of chance is a considered a violation of the district's policy on gambling. If you are not sure, check with the Director of Business/Human Relations.
5. **If a commercial product is to be sold, will it be sold on its own merits and without reference to the needs of Columbus Public Schools?**
All commercial products must sell on their own merits, not the benefit received by the school/group. The principle of value received is critical in choosing what to sell.
6. **If a commercial product is to be sold, will the fund raising activity comply with the intentions communicated by the fundraiser?**
Students must identify themselves by which group or school they represent and for what cause they are raising the money.
7. **Will the fund raising project avoid soliciting money or gifts?**
Columbus Public Schools students shall not be permitted to serve as solicitors of money for the Board of Education or district. No adults and students shall be permitted to serve as solicitors of money in support of personal gain.
8. **Does the fund raising activity avoid competition with other schools and other organizations such as the United Way?**
Check to make sure you are not in direct conflict with fund raising efforts of other schools or local agencies.

Cross Reference: 506.07 Fund Raising Activities
 506.50 School-Supporting Organizations

Exhibit

Approved: 09-17-12

Columbus Public Schools
Columbus, Nebraska



COLUMBUS PUBLIC SCHOOLS
COLUMBUS MIDDLE SCHOOL

DATE: February 11, 2026
TO: Dr. Kay
FROM: Mr. Jordon Anderson
RE: Participation Request: Non-Public School Student

Dr. Kay

We have received a formal inquiry from a family at **Columbus Christian** regarding their daughter, **Janessa Tiemeyer** (8th grade), participating in our middle school track program. As this involves a student from a non-public institution, I am seeking your review and approval to move forward with her enrollment with the CMS track program.

If the Board approves this request, I will meet with the Tiemeyer family to establish clear expectations. Specifically, I will outline that:

1. **Attendance at every meet is not guaranteed**, consistent with the policy applied to all our full-time students.
2. The program operates under **competitive meet rules**, not recreational league rules.
3. The high volume of participants necessitates a prioritized approach to entries to ensure fairness across the entire team.

If you need any clarification please let me know.

Thank you.

Mr. Jordon Anderson
CMS Assistant Principal and Athletic Director

“Engaging All Learners to Achieve Success”

2200 26th Street | Columbus, Nebraska, 68601 | Ph: 402.563.7060 | Fx: 402.563.7068

ColumbusPublicSchools.org

To: Board of Education
From: Leonard Kwapnioski
CC: Dr. Kay
Date: February 13, 2026
Re: NTLSC Furniture

I recommend that the Board of Education approve the bid from Eakes Office Solutions in the amount of \$58,158.73. This recommendation follows the RFP process discussed at the February 6, 2026, Committee of the Whole meeting. While CPS received three competitive bids, Eakes provided the most favorable and comprehensive proposal. Please note that three specialty items for the health and wellness rooms will be purchased separately. Cost is estimated at \$2000.00

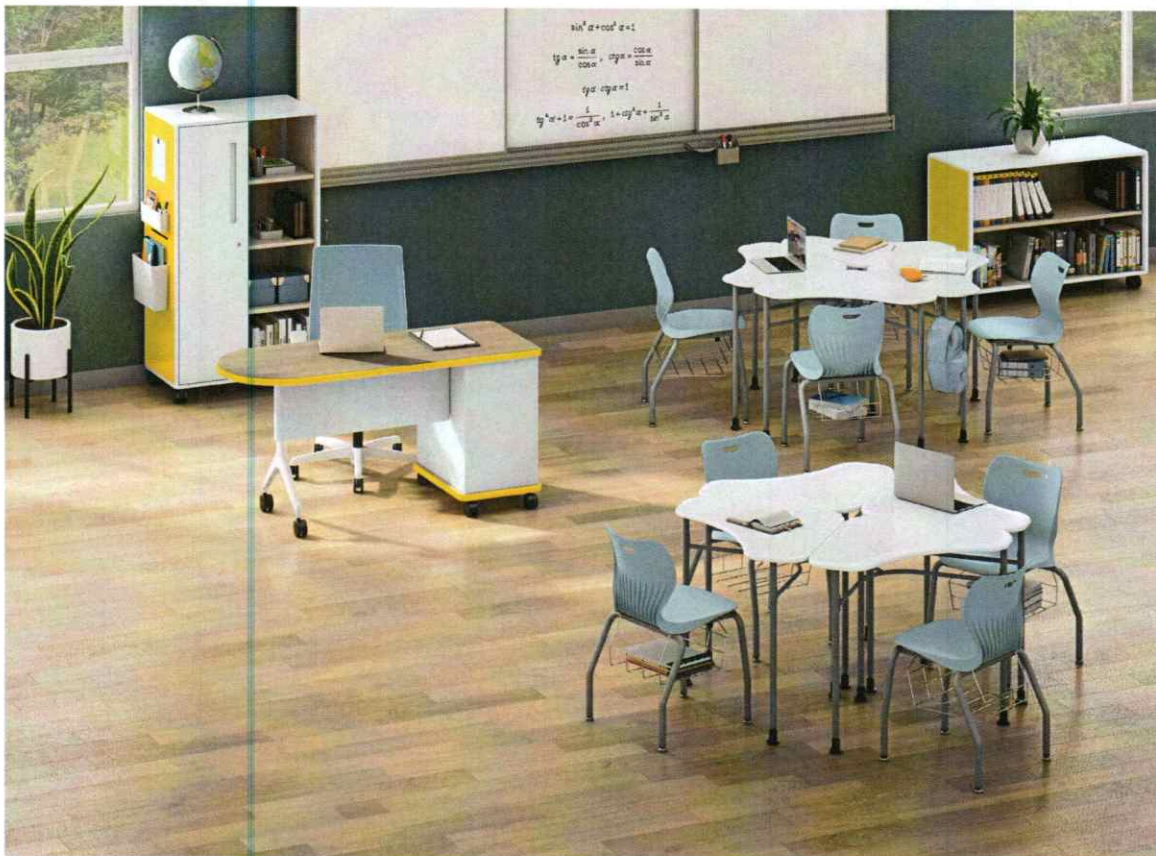
Let me know if you have any questions.

Thanks

Leonard

Lakeshore Learning	\$60,009.30 (bid not complete)
School Specialty	\$54,701.19 (warranty concerns(casters, no local support)

PROJECT PROPOSAL



Quantity	Item	Unit Cost	Total Cost
84	Student Desk-HON	\$235.54	\$19,785.36
84	Student Chair-HON	\$90.96	\$7,641.27
3	Dignity Room Table-SOI	\$590.40	\$1,771.20
4	Dignity Room Chair-HON	\$90.96	\$363.87
2	Admin L-Shape Desk-HON	\$2,151.90	\$4,303.80
2	Admin Office Chair-HON	\$432.03	\$864.06
1	Admin Straight Desk-HON	\$901.15	\$901.15
2	Admin Office Chair-HON	\$432.03	\$864.06
1	Conference Table-HON	\$1,032.24	\$1,032.24
9	Conference Chairs-OFS-(3) 3/Packs	\$866.80	\$2,600.40
1	Square Breakroom Table-HON	\$379.73	\$379.73
4	Breakroom Chairs-HON	\$150.51	\$602.02
7	Teacher Desk-Smith Systems	\$883.21	\$6,182.47
6	Teacher Chair-HON	\$252.57	\$1,515.42
1	Nurse Chair-HON	\$252.57	\$252.57
2	Student Waiting Chair-HON	\$301.01	\$301.01
6	Office Guest Chair-OFS-(2) 3/Packs	\$866.80	\$1,733.60
1	Installation	\$4,580.00	\$4,580.00
1	Manufacturer Freight	\$855.00	\$855.00
1	Manufacturer Tariff Surcharge	\$1,630.00	\$1,630.00
	All-inclusive bid (furniture, design, installation, etc.)	Total	\$58,158.73