

Board Minutes  
Oakdale Public School Board of Education Special Meeting  
Monday, May 11, 2026 6:00 PM  
Fine Arts Building - Auditorium

---

President - Caeli Williams

---

Vice President – Jodi Hietpas

---

Clerk – Kimber Shoop

---

Minutes Clerk.....Steven Huff

1. **Routine Items:**
  - **Call to Order**
  - **Roll Call**
  - **Establishment of Quorum**
  - **Possible vote to approve agenda**
2. **Pledge of Allegiance & Moment of Silence**  
**Colors presented by Boy Scout Troop 121**
3. **Oakdale's "Shining Stars", Kareem Sawan**  
**Each month the board honors a student, teacher, staff member, parent volunteer, or donor in order to showcase various examples of excellence being accomplished at Oakdale Schools.**
4. **Staff Reports & Presentations**
  - **Superintendent's Report**
  - **Principals' Reports**
  - **Sanctioned Organization Reports, if any**
5. **Presentation by Kendall Still on district capital improvement needs.**
6. **Public Comment:**  
**All meetings of the Board of Directors shall be open to the public and any regular meeting shall include an opportunity for the public to address the Board. Public Comments are limited to three (3) minutes and must be related to an agenda item or topic. Members of the public wishing to address the board must sign up before the meeting. Where several people wish to address the same subject, a spokesperson must be selected. The Board President may interrupt and terminate any comments that are not in accordance with any of these criteria or in keeping with Board Policy BED. Board members may not respond to speakers' comments. See attachment.**

7. **Consent Agenda:**  
**The following items concern reports and items of a routine nature normally approved at Board meetings. They will be considered and voted on together as a group with one vote; provided that any Board member may ask that one or more items be considered and voted on separately. The Consent Agenda includes discussion, consideration, and possible action upon the following items:**
  1. Approve minutes of the April 14, 2026 Board Meeting.
  2. Accept Treasurer's Report including: Financial statements, fund balances, expenditures, revenue, warrants, bank summary, bond reports, and investments) for the month ending April 30, 2026.
  3. Approve Encumbrances
  4. General Fund Payments #2342-2494
    1. Child Nutrition Payments are included with General Fund Payments
  5. Building Fund Payments #163-183
  6. Activity Fund Payments #229-245
  7. Bond 37 Payments #39-40
  8. Transfer of Activity Funds to the General Fund:

Activity Fund #930 AfterCare \$4774.60

Activity Fund #995 Art Class \$1,312.42.
8. **Discussion and possible action on Mutual Cooperation Agreement with The Board of County Commissioners of Oklahoma County.**
9. **Discussion and possible action on approving summer camps and sponsors as listed in Attachment B.**
10. **Discussion and possible action on stipend for summer library services. Stipend is equal to the teacher's daily rate of pay for 5 days.**
11. **Consent Agenda:**  
**The following items concern reports and items of a routine nature normally approved at Board meetings. They will be considered and voted on together as a group with one vote; provided that any Board member may ask that one or more items be considered and voted on separately. The Consent Agenda includes discussion, consideration, and possible action upon the following contracts for the 2026 - 2027 academic year.**
  1. Sylogist contract
  2. Common Goal (student informaion system)
  3. Moore Therapy Serices (OT)
  4. Alcohol & Drug Testing, Inc
  5. Shelly Ryland, Speech
  6. Republic Services
12. **Discussion and possible action on resignations.**
13. **Executive Session: Proposed executive session to discuss current certified teachers and support personnel as listed on Exhibit A: Personnel Report as per: 25 O.S. § 307(B)(1)**
  1. Possible discussion and vote to enter Executive Session
  2. Acknowledge return to open session.
  3. Executive session compliance announcement.
14. **Discussion, and possible action on hiring personnel for the 2026 - 2027 academic year as listed in attachment A.**
15. **Discussion and possible action on hiring Michael Lowe, Jr as non-certified adjunct physical education teacher for the 2026 - 2027 academic year.**
16. **Discussion and possible action on hiring seasonal maintenance as listed in attachment A for summer 2026 as needed.**
17. **Adjourn**



# CAPITAL



# IMPROVEMENTS



*Presentation*

# Focus Areas

01

## Safety and Security

Fire Monitoring and Alarm System- Updated  
Access Controlled Gates  
Front Parking Lot with Exterior Lighting

02

## Teaching and Learning

Middle School Library  
Ben-Q Boards  
Fine Arts Upgrades

03

## Operational Efficiency

HVAC and Lighting Automation System  
HVAC Replacements (RTU's)  
Roof Repair/Replacement  
Irrigation and Landscaping Front of Building

04

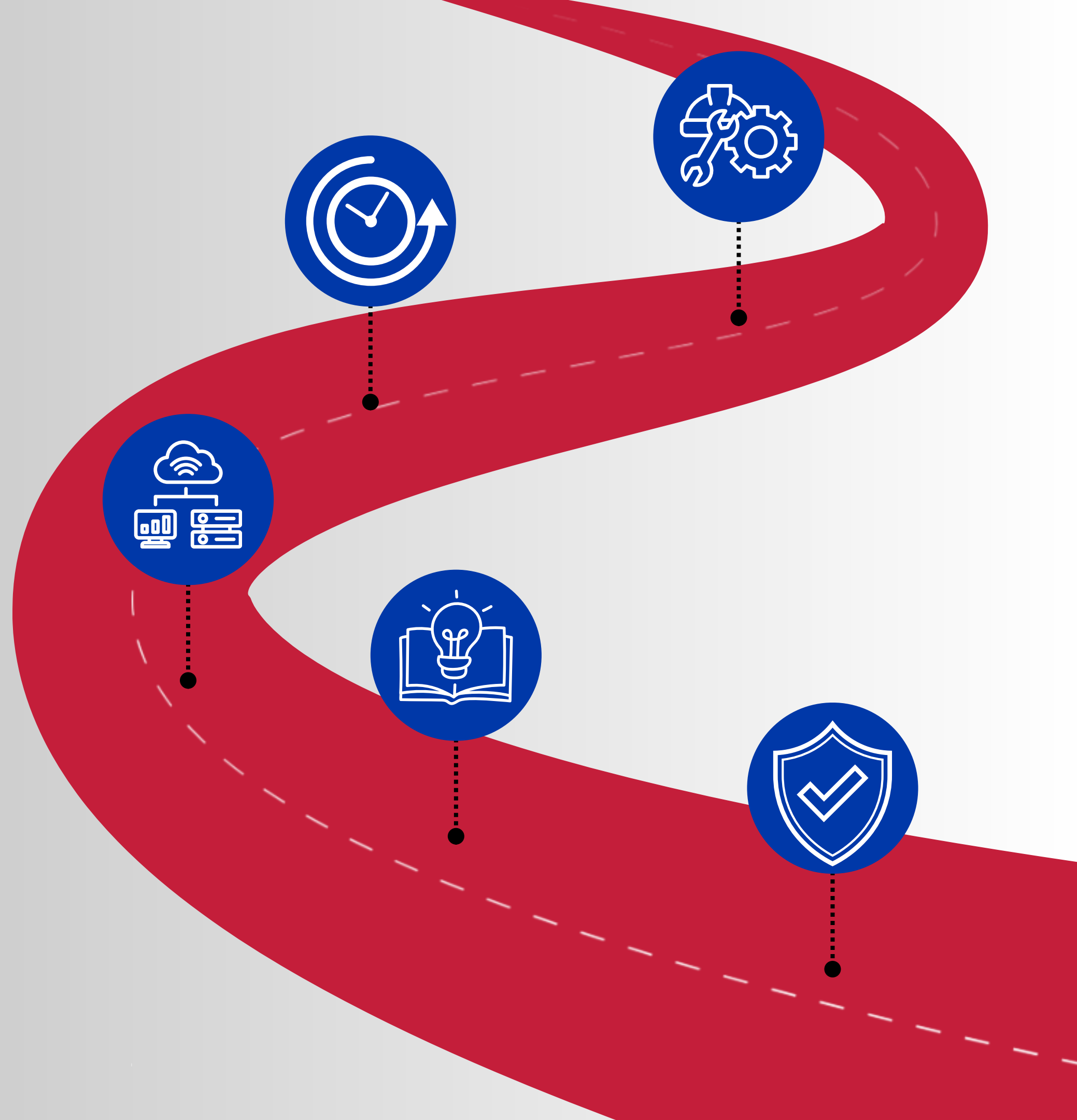
## Annual Funding

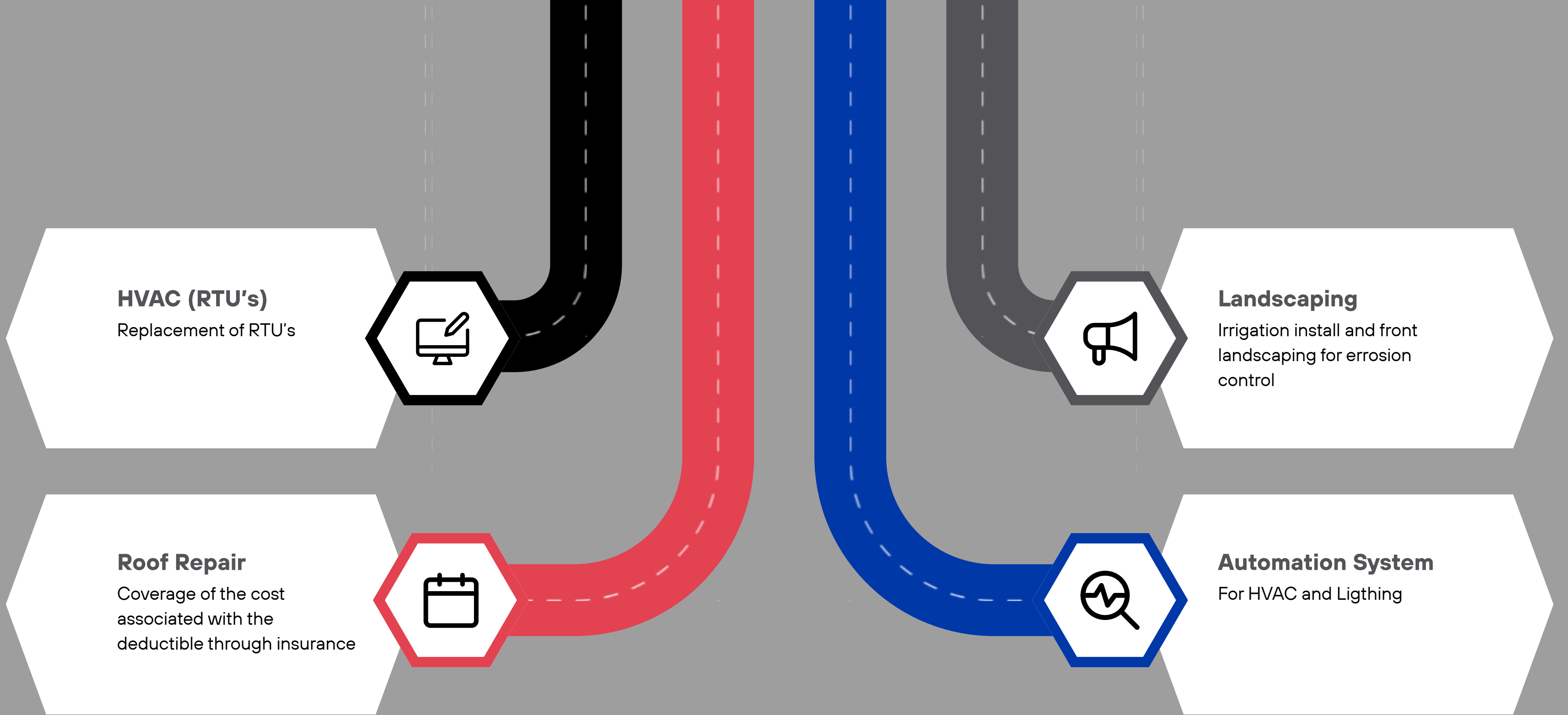
Furniture Replacement

05

## Infrastructure

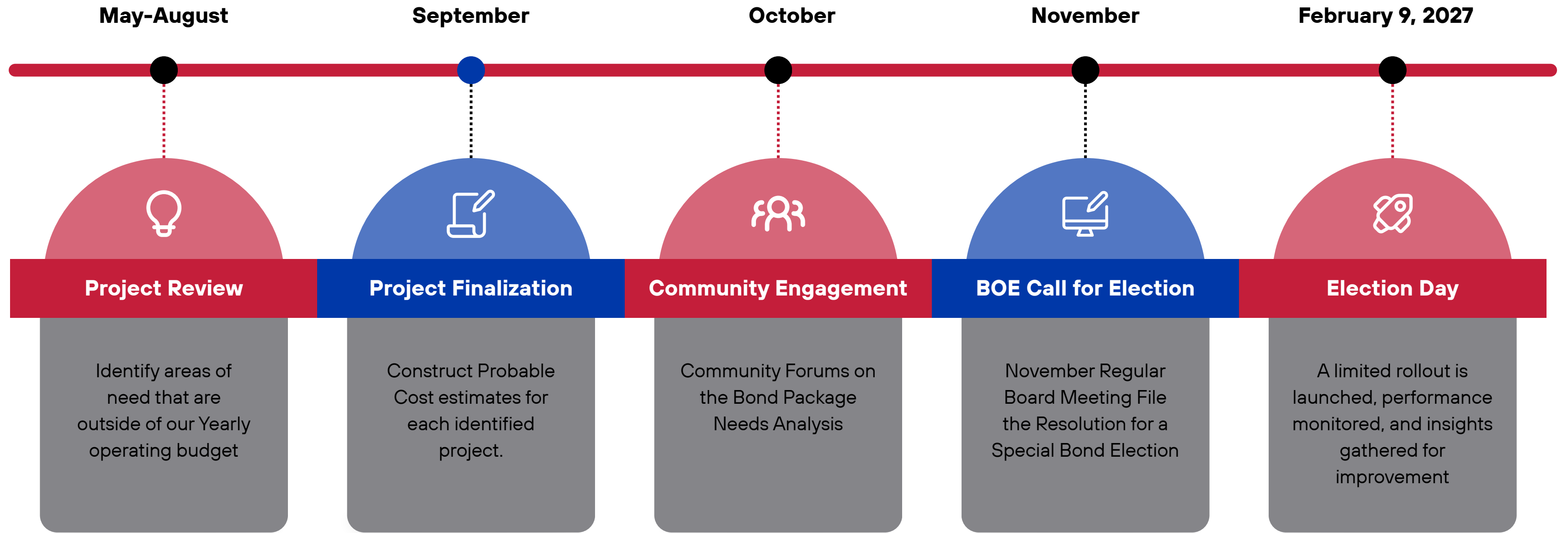
2 New Buses  
Demo Old Gym and Create Parking  
Restroom Remodel (2<sup>nd</sup>, 3<sup>rd</sup>, MS, and Gym Entrance)  
Marquee Update





# Operational Efficiency

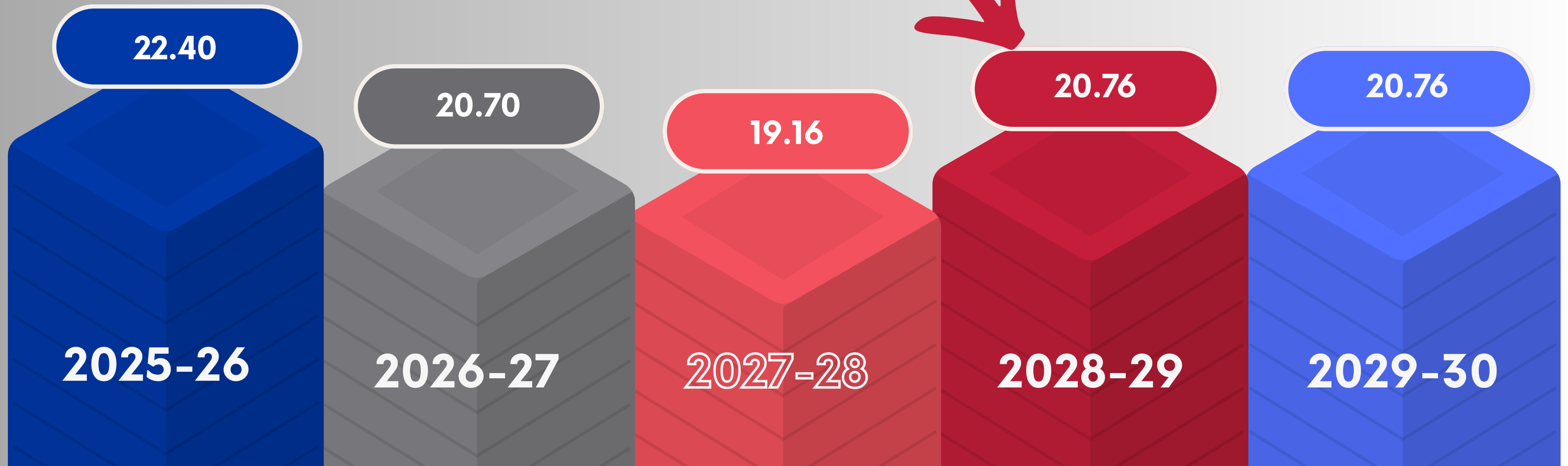
# February 2027 Bond Timeline





# Millage Rate History

*Without a 2027 Bond Passage, Millage would drop to 0 (Zero)*



Board Minutes  
Oakdale Public School Board of Education Special Meeting  
Tuesday, April 14, 2026 6:00 PM  
Fine Arts Building - Auditorium

---

President - Jodi Hietpas

---

Vice President – Eric Davis

---

Clerk – Kimber Shoop

---

Minutes Clerk.....Steven Huff

**1. Routine Items:**

- **Call to Order**
- **Roll Call**
- **Establishment of Quorum**
- **Possible vote to approve agenda**

Attendance Taken at 6:00 PM.

Jodi Hietpas: Present

Kimber Shoop: Present

Caeli Williams: Present

Present: 3.

Motion to approve the agenda. This motion, made by Kimber Shoop and seconded by Jodi Hietpas, passed.

Jodi Hietpas: Yea

Kimber Shoop: Yea

Caeli Williams: Yea

Yea: 3, Nay: 0

**2. Pledge of Allegiance & Moment of Silence**

**Colors presented by Boy Scout Troop 121**

***3. Administer the oath of office and seat Eric Davis as board member for seat #1.***

Attendance Update Taken at 6:07 PM.

Eric Davis: Present

Present: 3.

#### **4. Reorganization of the board of education.**

Motion to approve reorganization of the board: Jodi Hietpas, President; Eric Davis, Vice President; Kimber Shoop, Clerk. This motion, made by Kimber Shoop and seconded by Eric Davis, passed.

Eric Davis: Yea

Jodi Hietpas: Yea

Kimber Shoop: Yea

Yea: 3, Nay: 0

#### **5. Presentation of Oakdale Public Schools 2025 Audit S by Nicole Pearce of Bledsoe, Hewett, & Gullekson, Certified Public Accountants, PLLLP.**

#### **6. Staff Reports & Presentations**

- Superintendent's Report
- Principals' Reports
- Sanctioned Organization Reports, if any

#### **7. Public Comment:**

**All meetings of the Board of Directors shall be open to the public and any regular meeting shall include an opportunity for the public to address the Board. Public Comments are limited to three (3) minutes and must be related to an agenda item or topic. Members of the public wishing to address the board must sign up before the meeting. Where several people wish to address the same subject, a spokesperson must be selected. The Board President may interrupt and terminate any comments that are not in accordance with any of these criteria or in keeping with Board Policy BED. Board members may not respond to speakers' comments. See attachment.**

#### **8. Consent Agenda:**

**The following items concern reports and items of a routine nature normally approved at Board meetings. They will be considered and voted on together as a group with one vote; provided that any Board member may ask that one or more items be considered and voted on separately. The Consent Agenda includes discussion, consideration, and possible action upon the following items:**

Motion to approve the consent agenda. This motion, made by Kimber Shoop and seconded by Jodi Hietpas, passed.

Eric Davis: Abstain (Without Conflict)

Jodi Hietpas: Yea

Kimber Shoop: Yea

Yea: 2, Nay: 0, Abstain (Without Conflict): 1

1. Approve minutes of the March 5 and 24, 2026 Special Board Meetings.
2. Accept Treasurer's Report including: Financial statements, fund balances, expenditures, revenue, warrants, bank summary, bond reports, and investments) for the month ending 3/31/2026.
3. Approve Encumbrances
4. General Fund Payments #2082-2226
  1. Child Nutrition Payments are included with General Fund Payments
5. Building Fund Payments #142-162

6. Activity Fund #190-228

7. Bond 37 Payments #34-38

8. Transfer of Activity Funds to the General Fund:

Activity Fund #930 Aftercare: \$4,774.64.

**9. Discussion, consideration, and possible action on Application for Temporary Appropriations for FY 27.**

Motion to approve the Application for Temporary Appropriations. This motion, made by Kimber Shoop and seconded by Eric Davis, passed.

Eric Davis: Yea

Jodi Hietpas: Yea

Kimber Shoop: Yea

Yea: 3, Nay: 0

**10. Discussion and possible action on contract with KI Furniture for office furniture and library furniture.**

Motion to approve the contract with KI Furniture for office and library furniture. This motion, made by Kimber Shoop and seconded by Eric Davis, passed.

Eric Davis: Yea

Jodi Hietpas: Yea

Kimber Shoop: Yea

Yea: 3, Nay: 0

**11. Discussion and possible action on resignations.**

Motion to accept the resignation of Susie Padgett, Reading Specialist and Aubrey Stanley, Teacher. This motion, made by Jodi Hietpas and seconded by Kimber Shoop, passed.

Eric Davis: Yea

Jodi Hietpas: Yea

Kimber Shoop: Yea

Yea: 3, Nay: 0

**12. Executive Session: Proposed executive session to discuss personnel recommendations as listed on Exhibit A: Personnel Report and MOU for superintendent transitional services. as per: 25 O.S. § 307(B)(1)**

1. Possible discussion and vote to NOT enter Executive Session

Motion to not enter into executive session. This motion, made by Kimber Shoop and seconded by Eric Davis, passed.

Eric Davis: Yea

Jodi Hietpas: Yea

Kimber Shoop: Yea

Yea: 3, Nay: 0

2. Acknowledge return to open session.

3. Executive session compliance announcement.

**13. Discussion and possible action on personnel recommendations as listed in Exhibit A: Personnel Report and MOU for superintendent transitional services.**

Motion to approve the personnel recommendations: Allie Garrison, Reading Specialist-temporary contract and Kim Hancock, Teacher-temporary contract and the approve the MOU for superintendent transitional services with Kendall Still. This motion, made by Kimber Shoop and seconded by Eric Davis, passed.

Eric Davis: Yea

Jodi Hietpas: Yea

Kimber Shoop: Yea

Yea: 3, Nay: 0

#### **14. Adjourn**

Motion to adjourn @ 6:55p.m. This motion, made by Jodi Hietpas and seconded by Kimber Shoop, passed.

Eric Davis: Yea

Jodi Hietpas: Yea

Kimber Shoop: Yea

Yea: 3, Nay: 0





**Oakdale School**  
**55-C029**

**Financial Report**  
**04/30/2026**

**Oakdale Public School  
Cash Balances - Appropriated Funds  
April 30, 2026**

	Less:		Cash Balances 4/30/2026	Comparison 4/30/2025	Comparison 4/30/2024
	Balance 4/30/2026	O/S Warrants 3/31/2026			
<b>General Fund</b>					
FY 2025-26	2,795,788.33	86,309.52	2,709,478.81		
FY 2024-25	515.04	515.04	-		
<b>Total</b>	<b>2,796,303.37</b>	<b>86,824.56</b>	<b>2,709,478.81</b>	<b>2,391,894.02</b>	<b>2,276,918.53</b>
<b>Building Fund</b>					
FY 2025-26	238,200.24	0.00	238,200.24		
FY 2024-25	0.00	-	0.00		
<b>Total</b>	<b>238,200.24</b>	<b>0.00</b>	<b>238,200.24</b>	<b>175,568.05</b>	<b>173,608.95</b>
<b>Building Bond Funds</b>					
BBF (Fund 37)	2,077,826.70	-	2,077,826.70		
<b>Total</b>	<b>2,077,826.70</b>	<b>-</b>	<b>2,077,826.70</b>	<b>10,026,236.30</b>	<b>377,054.93</b>
<b>Sinking Fund</b>	2,261,537.60	-	2,261,537.60	3,106,442.27	2,333,001.81
<b>Insurance Recovery Fund</b>	-	-	-	-	-
<b>Total Cash Balances</b>	<b>7,373,867.91</b>	<b>86,824.56</b>	<b>7,287,043.35</b>	<b>15,700,140.64</b>	<b>5,160,584.22</b>

FY26 Non-Recurring (One Time) Funds			
Program	Budget	Claimed	Remaining
Project 375	34,500.00	34,500.00	-
Project 376	93,041.47	34,368.24	58,673.23
Project 511	44,655.41	28,537.65	16,117.76
Project 615	981.95	-	981.95
Project 621	118,982.50	53,407.11	65,575.39
Project 627	75,191.54	63,465.53	11,726.01
Project 641	2,258.97	2,258.97	-
<b>TOTALS</b>	<b>369,611.84</b>	<b>216,537.50</b>	<b>153,074.34</b>

**All Appropriated Funds  
Treasurer's Activity  
7/1/2025 to 4/30/2026**

<b><u>ASSETS</u></b>	<b>Beginning Balance</b>	<b>Deposits</b>	<b>Net Transfers</b>	<b>Disbursements</b>	<b>Ending Balance</b>
FNB of MWC					
Checking - General Fund	13,557,399.97	11,241,814.25	(735.80)	17,424,610.51	7,373,867.91
Fiscal Agent - Sinking Fund	-	-	-	-	-
<b>Total Assets</b>	<b>13,557,399.97</b>	<b>11,241,814.25</b>	<b>(735.80)</b>	<b>17,424,610.51</b>	<b>7,373,867.91</b>
<b><u>LIABILITIES</u></b>					
General Fund					
2025-26 FY	1,000,980.54	7,104,835.48	(735.80)	5,309,291.89	2,795,788.33
2024-25 FY	174,528.48	-	-	174,013.44	515.04
<b>Total General Fund</b>	<b>1,175,509.02</b>	<b>7,104,835.48</b>	<b>(735.80)</b>	<b>5,483,305.33</b>	<b>2,796,303.37</b>
Building Fund					
2025-26 FY	91,945.94	774,950.72	-	628,696.42	238,200.24
2024-25 FY	17,955.69	-	-	17,955.69	-
<b>Total Building Fund</b>	<b>109,901.63</b>	<b>774,950.72</b>	<b>-</b>	<b>646,652.11</b>	<b>238,200.24</b>
Building Bond Funds					
BBF (Fund 37)	9,133,243.58	-	-	7,055,416.88	2,077,826.70
<b>Total BBF</b>	<b>9,133,243.58</b>	<b>-</b>	<b>-</b>	<b>7,055,416.88</b>	<b>2,077,826.70</b>
Insurance Recovery Fund 86	11,286.19	2,750.00	-	14,036.19	-
Sinking Fund	3,127,459.55	3,359,278.05	-	4,225,200.00	2,261,537.60
<b>Total Liabilities</b>	<b>13,557,399.97</b>	<b>11,241,814.25</b>	<b>(735.80)</b>	<b>17,424,610.51</b>	<b>7,373,867.91</b>
<b><u>Investment Report</u></b>	<b>138,102.35</b>				

**General Fund Expenditures  
April 30, 2026**

	FY24 Expenditures		FY25 Expenditures		FY26 Expenditures	
	Payroll	Non-Payroll	Payroll	Non-Payroll	Payroll	Non-Payroll
July	81,438.09	40,930.41	95,730.53	94,751.21	114,058.25	53,159.83
August	281,869.17	92,218.51	319,439.63	147,621.53	319,459.85	40,375.60
September	494,019.04	118,970.01	527,077.69	134,701.41	536,971.17	67,772.57
October	497,504.23	96,498.73	524,175.88	71,499.30	541,916.65	59,432.55
November	493,481.45	60,779.47	551,599.39	66,202.33	564,222.28	85,507.40
December	507,118.70	107,266.90	784,532.30	51,704.86	592,649.17	54,153.09
January	496,680.43	46,999.59	256,292.25	44,581.38	540,674.56	31,912.42
February	508,763.40	127,506.00	528,884.92	56,999.66	552,298.83	33,976.86
March	507,613.69	72,065.13	533,758.86	56,264.80	554,690.22	48,646.84
April	512,941.12	60,856.63	541,900.04	67,381.93	547,893.83	55,759.92
May	520,054.52	112,955.43	1,613,728.18	65,028.30		
June	1,209,396.13	84,281.88	191,942.44	46,236.11		
<b>TOTALS</b>	<b>6,110,879.97</b>	<b>1,021,328.69</b>	<b>6,469,062.11</b>	<b>902,972.82</b>	<b>4,864,834.81</b>	<b>530,697.08</b>
		<b>7,132,208.66</b>		<b>7,372,034.93</b>		<b>5,395,531.89</b>
<b>YTD Comparison</b>						
	FY24 Expenditures		FY25 Expenditures		FY26 Expenditures	
	Payroll	Non-Payroll	Payroll	Non-Payroll	Payroll	Non-Payroll
July	81,438.09	40,930.41	95,730.53	94,751.21	114,058.25	53,159.83
August	281,869.17	92,218.51	319,439.63	147,621.53	319,459.85	40,375.60
September	494,019.04	118,970.01	527,077.69	134,701.41	536,971.17	67,772.57
October	497,504.23	96,498.73	524,175.88	71,499.30	541,916.65	59,432.55
November	493,481.45	60,779.47	551,599.39	66,202.33	564,222.28	85,507.40
December	507,118.70	107,266.90	784,532.30	51,704.86	592,649.17	54,153.09
January	496,680.43	46,999.59	256,292.25	44,581.38	540,674.56	31,912.42
February	508,763.40	127,506.00	528,884.92	56,999.66	552,298.83	33,976.86
March	507,613.69	72,065.13	533,758.86	56,264.80	554,690.22	48,646.84
April	512,941.12	60,856.63	541,900.04	67,381.93	547,893.83	55,759.92
May						
June						
<b>TOTALS</b>	<b>4,381,429.32</b>	<b>824,091.38</b>	<b>4,663,391.49</b>	<b>791,708.41</b>	<b>4,864,834.81</b>	<b>530,697.08</b>
		<b>5,205,520.70</b>		<b>5,455,099.90</b>		<b>5,395,531.89</b>

**Oakdale Public School  
General Fund Expenditures  
April 30, 2026**

<b>Personnel Expenses</b>		<b>2025-26</b>	<b>CURRENT MONTH</b>	<b>2025-26</b>	<b>% of YTD</b>
<b>OBJECT</b>	<b>DESCRIPTION</b>	<b>BUDGET</b>	<b>2026</b>	<b>YEAR-TO-DATE</b>	<b>BUDGET</b>
100-299	Personnel	6,600,000.00	547,893.83	4,864,834.81	73.71%
	<b>Total Personnel</b>	<b>6,600,000.00</b>	<b>547,893.83</b>	<b>4,864,834.81</b>	<b>73.71%</b>
<b>Non-Personnel Expenses</b>					
310	Administrative Services	13,957.50	-	9,007.50	64.5%
311	BOE Services	3,717.90	-	3,717.90	100.0%
320	Professional Education Services	63,454.00	3,802.50	27,925.50	44.0%
323	Student Services	1,500.00	-	-	0.0%
331	Accounting & Audit Services	8,250.00	-	8,250.00	100.0%
334	Engineering Services	17,500.00	-	-	0.0%
336	Medical Services	49,340.50	5,669.00	38,901.07	78.8%
337	Other Professional Services	15,000.00	-	11,618.10	77.5%
344	Security Services	300.00	-	300.00	100.0%
346	Technology Services	900.00	-	900.00	100.0%
358	Legal Services	5,981.10	2,614.55	8,595.65	143.7%
359	Employee Training	17,045.38	600.00	7,647.00	44.9%
410	Utility Services	7,683.65	-	1,992.51	25.9%
420	Cleaning Services	535.50	-	-	0.0%
425	Laundry Services	123.00	-	123.00	100.0%
426	Lawn Care Services	5,520.00	-	-	0.0%
430	Repairs and Maintenance	7,625.00	-	-	0.0%
432	Tech Svcs Computer	51,071.33	10,396.01	59,598.13	116.7%
435	Heating Svcs	1,825.00	-	-	0.0%
438	Oth Building Svcs	1,395.00	-	-	0.0%
439	Other Equipment Svcs	6,566.98	-	1,314.99	20.0%
440	Rentals or Lease Svcs	367.56	-	-	0.0%
442	Equip & Vehicle Svcs	8,416.05	-	2,850.00	33.9%
443	Land & Bldg Services	5,000.00	-	2,705.58	54.1%
449	Other Rentals/Lease Services	1,206.69	-	963.10	79.8%
515	Student Lodging	2,527.62	-	-	0.0%
522	Liability Insurance	9,361.00	-	9,361.00	100.0%
524	Vehicle Insurance	7,964.00	-	7,964.00	100.0%
525	Surety Bonds	1,502.50	-	1,502.50	100.0%
530	Communication Services	43,366.79	1,010.96	40,926.50	94.4%
540	Advertising	483.60	-	483.60	100.0%
580	Staff Travel	3,077.25	-	843.63	27.4%
582	Out of District Travel	431.56	-	-	0.0%
611	Copy Supplies	10,614.16	189.21	10,803.37	101.8%
612	Automotive & Bus Supplies	16,794.70	85.05	6,932.31	41.3%
614	Testing Supplies	7,936.83	-	5,927.00	74.7%
615	Audiovisual Supplies	1,025.00	-	1,025.00	100.0%
616	First Aid	10,265.02	-	610.73	5.9%
617	Kitchen Supplies	12,985.49	1,187.01	6,639.45	51.1%
618	Maintenance Supplies	11,257.05	2,475.78	8,199.10	72.8%
619	Classroom/Office Supplies	46,514.31	4,183.18	25,248.85	54.3%
625	Gasoline	14,561.60	1,959.08	10,691.86	73.4%
630	Food and Milk	135,199.38	15,267.56	113,012.96	83.6%
639	Other Food Costs	7,701.17	1,034.51	6,519.23	84.7%
641	Books	7,870.07	498.86	7,054.10	89.6%
643	Textbooks	99,135.90	-	6,189.69	6.2%
645	Workbooks	821.19	-	821.19	100.0%
651	Appliances, Furniture and Fixtures	1,981.12	-	738.99	37.3%
652	Audiovisual	14,715.00	-	-	0.0%
653	Technology Related Supplies	78,040.57	-	55,918.73	71.7%
655	Instruments	20.00	-	18.41	92.1%
657	Uniforms	3,985.88	3,985.88	4,080.88	102.4%
683	Extracurricular Supplies	1,579.86	-	713.70	45.2%
810	Dues and Fees	6,294.99	33.18	6,371.19	101.2%
850	Game Contracts & Guarantees	4,500.00	-	4,500.00	100.0%
860	Staff Registration & Tuition	400.00	-	400.00	100.0%
930	Reimbursement	2,455.90	-	21.48	0.9%
	<b>Total Non-Personnel</b>	<b>859,651.65</b>	<b>55,759.92</b>	<b>530,697.08</b>	<b>61.7%</b>
	<b>TOTALS</b>	<b>7,459,651.65</b>	<b>603,653.75</b>	<b>5,395,531.89</b>	<b>72.3%</b>

**Oakdale Public School  
Summary of Monthly Revenue - By Fund  
2025-26 FY**

<b>Month</b>	<b>Total</b>	<b>General Fund</b>	<b>Building Fund</b>	<b>BBF (Fund 37)</b>	<b>Ins. Recovery (Fund 86)</b>	<b>Sinking Fund</b>
<b>7-2025</b>	133,397.13	106,026.46	4,973.79	-	2,750.00	19,646.88
<b>8</b>	227,685.04	215,040.21	2,428.24	-	-	10,216.59
<b>9</b>	136,177.40	128,019.51	1,606.98	-	-	6,550.91
<b>10</b>	123,726.54	119,992.82	780.35	-	-	2,953.37
<b>11</b>	135,047.05	131,295.24	771.77	-	-	2,980.04
<b>12</b>	2,174,219.49	1,333,007.98	157,699.60	-	-	683,511.91
<b>1-2026</b>	5,829,305.05	3,428,212.14	449,578.90	-	-	1,951,514.01
<b>2</b>	474,175.52	341,738.46	24,804.81	-	-	107,632.25
<b>3</b>	795,404.28	538,486.07	48,097.58	-	-	208,820.63
<b>4</b>	1,212,676.75	763,016.59	84,208.70	-	-	365,451.46
<b>5</b>	-					
<b>6</b>	-					
<b>Total</b>	11,241,814.25	7,104,835.48	774,950.72	0.00	2,750.00	3,359,278.05

**Oakdale Public School  
Warrants Issued By Month - By Fund  
2025-26 FY**

<b>Month</b>	<b>Total</b>	<b>General Fund FY26</b>	<b>Building Fund FY26</b>	<b>(Fund 37) BBF</b>	<b>(Fund 86) Ins. Recovery</b>	<b>Sinking Fund</b>
<b>7-2025</b>	358,775.40	167,218.08	188,807.32	-	2,750.00	-
<b>8</b>	2,309,969.37	359,835.45	30,738.11	1,919,395.81	-	-
<b>9</b>	1,082,924.65	604,743.74	45,599.81	432,581.10	-	-
<b>10</b>	2,821,971.69	601,349.20	47,344.10	1,938,178.39	-	235,100.00
<b>11</b>	1,166,362.31	649,708.20	54,588.38	462,065.73	-	-
<b>12</b>	1,273,218.72	646,802.26	99,432.77	526,983.69	-	-
<b>1-2026</b>	811,217.84	572,586.98	22,331.15	216,299.71	-	-
<b>2</b>	1,097,565.48	586,275.69	40,587.89	470,701.90	-	-
<b>3</b>	926,972.51	603,428.06	52,126.87	271,417.58	-	-
<b>4</b>	5,080,456.69	603,653.75	47,140.02	439,562.92	-	3,990,100.00
<b>5</b>	-					
<b>6</b>	-					
<b>Totals</b>	16,929,434.66	5,395,601.41	628,696.42	6,677,186.83	2,750.00	4,225,200.00

**Oakdale Public School  
Warrants Paid By Month - By Fund  
2025-26 FY**

Month	Total	General Fund		Building Fund		(Fund 37)	(Fund 86)	Sinking Fund
		FY26	FY25	FY26	FY25	BBF	Ins. Recovery	
<b>7-2025</b>	803,321.09	138,932.23	91,588.61	188,807.32	17,955.69	352,001.05	14,036.19	-
<b>8</b>	2,299,800.74	272,903.05	50,809.77	30,463.11	-	1,945,624.81	-	-
<b>9</b>	1,201,095.60	691,024.63	31,615.06	45,874.81	-	432,581.10	-	-
<b>10</b>	2,830,494.11	610,846.62	-	46,369.10	-	1,938,178.39	-	235,100.00
<b>11</b>	1,006,607.05	488,977.94	-	55,563.38	-	462,065.73	-	-
<b>12</b>	1,311,863.73	685,447.27	-	99,432.77	-	526,983.69	-	-
<b>1-2026</b>	807,065.37	568,656.69	-	22,108.97	-	216,299.71	-	-
<b>2</b>	1,160,752.94	649,240.97	-	40,810.07	-	470,701.90	-	-
<b>3</b>	867,861.18	544,316.73	-	52,126.87	-	271,417.58	-	-
<b>4</b>	5,135,748.70	658,945.76	-	47,140.02	-	439,562.92	-	3,990,100.00
<b>5</b>	-							
<b>6</b>	-							
<b>Total</b>	17,424,610.51	5,309,291.89	174,013.44	628,696.42	17,955.69	7,055,416.88	14,036.19	4,225,200.00

**Oakdale Public School  
Warrant Accounts - By Funds  
2025-26 FY**

<b>2025-26 FY</b>	<b>Total</b>	<b>General</b>	<b>Building</b>	<b>BBF (37)</b>	<b>Ins. Rec (86)</b>	<b>Sinking (41)</b>
<b>O/S @ 7/01/25</b>	-	-	-	-	-	-
Issued to Date	16,929,434.66	5,395,601.41	628,696.42	6,677,186.83	2,750.00	4,225,200.00
Less: Paid to Date	16,843,125.14	5,309,291.89	628,696.42	6,677,186.83	2,750.00	4,225,200.00
<b>O/S @ 4/30/2026</b>	<b>86,309.52</b>	<b>86,309.52</b>	<b>0.00</b>	<b>-</b>	<b>-</b>	<b>-</b>

<b>2024-25 FY</b>	<b>Total</b>	<b>General</b>	<b>Building</b>	<b>BBF (37)</b>	<b>Ins. Rec (86)</b>	<b>Sinking (41)</b>
<b>O/S @ 7/01/25</b>	229,999.36	174,528.48	17,955.69	26,229.00	11,286.19	-
Issued to Date	-	-	-	-	-	-
Less: Paid to Date	229,484.32	174,013.44	17,955.69	26,229.00	11,286.19	-
<b>O/S @ 4/30/2026</b>	<b>515.04</b>	<b>515.04</b>	<b>-</b>	<b>-</b>	<b>-</b>	<b>-</b>

<b>All Years</b>	<b>Total</b>	<b>General</b>	<b>Building</b>	<b>BBF (37)</b>	<b>Ins. Rec (86)</b>	<b>Sinking (41)</b>
<b>O/S @ 7/01/25</b>	229,999.36	174,528.48	17,955.69	26,229.00	11,286.19	-
Issued to Date	16,929,434.66	5,395,601.41	628,696.42	6,677,186.83	2,750.00	4,225,200.00
Less: Paid to Date	17,072,609.46	5,483,305.33	646,652.11	6,703,415.83	14,036.19	4,225,200.00
<b>O/S @ 4/30/2026</b>	<b>86,824.56</b>	<b>86,824.56</b>	<b>0.00</b>	<b>-</b>	<b>-</b>	<b>-</b>

**Oakdale Public Schools  
Bank Summary  
General Fund  
2025-26 FY**

<b>Month</b>	<b>Beginning Balance</b>	<b>Deposits</b>	<b>Transfers In</b>	<b>Transfers Out</b>	<b>Disbursements</b>	<b>Ending Balance</b>
<b>7-2025</b>	13,557,399.97	133,397.13	- SC	35.00	803,321.09	12,887,441.01
<b>8</b>	12,887,441.01	227,685.04	- SC	35.00	2,299,800.74	10,815,290.31
<b>9</b>	10,815,290.31	136,177.40	- SC	35.00	1,201,095.60	9,750,337.11
<b>10</b>	9,750,337.11	123,726.54	- SC	70.00	2,830,494.11	7,043,499.54
<b>11</b>	7,043,499.54	135,047.05	- SC	70.00	1,006,607.05	6,171,869.54
<b>12</b>	6,171,869.54	2,174,219.49	- SC	70.00	1,311,863.73	7,034,155.30
<b>1-2026</b>	7,034,155.30	5,829,305.05	- SC	70.00	807,065.37	12,056,324.98
<b>2</b>	12,056,324.98	474,175.52	SC	70.00	1,160,752.94	11,369,677.56
<b>3</b>	11,369,677.56	795,404.28	SC	210.80	867,861.18	11,297,009.86
<b>4</b>	11,297,009.86	1,212,676.75	SC	70.00	5,135,748.70	7,373,867.91
<b>5</b>		0.00	SC		0.00	0.00
<b>6</b>		0.00	SC		0.00	0.00
<b>Total</b>	<b>13,557,399.97</b>	<b>11,241,814.25</b>	<b>-</b>	<b>735.80</b>	<b>17,424,610.51</b>	<b>7,373,867.91</b>

RC = Returned checks

SC = Bank service charges-ACH/POS PAY

GW = Gateway and Credit Card Processing

BC = Bank Correction

DD1=Direct Deposit Error 8/19 KH; deposit correction on 10/4

## FY26 BOND PRINCIPAL AND INTEREST SCHEDULE

### BUILDING BONDS of 2024, May 2, 2024 \$11,750,000.00

Date	Principal	Interest	Total	Date Paid	Notes
5/1/2025	\$ -	\$ 470,200.00	\$ 470,200.00	4/28/2025	
11/1/2025	\$ -	\$ 235,100.00	\$ 235,100.00	10/29/2025	
5/1/2026	\$ 3,755,000.00	\$ 235,100.00	\$ 3,990,100.00	4/27/2026	
11/1/2026	\$ -	\$ 160,000.00	\$ 160,000.00		
5/1/2027	\$ 4,000,000.00	\$ 160,000.00	\$ 4,160,000.00		
11/1/2027	\$ -	\$ 80,000.00	\$ 80,000.00		
5/1/2028	\$ 4,000,000.00	\$ 80,000.00	\$ 4,080,000.00		
<b>TOTALS</b>	<b>\$ 11,755,000.00</b>	<b>\$ 1,420,400.00</b>	<b>\$ 13,175,400.00</b>		

# Oakdale Public School

## Revenue/Expenditure Summary

**Options:** Fund: 61, Date Range: 7/1/2025 - 4/30/2026

	<b>Begin Balance</b>	<b>Receipts</b>	<b>Adjusting Entries</b>	<b>Payments</b>	<b>Cash End Balance</b>	<b>Unpaid POs</b>	<b>End Balance</b>
801 SPORTS	\$0.00	\$31,391.35	\$7,718.44	\$25,592.91	\$13,516.88	\$49.90	\$13,466.98
810 CHEER	\$0.00	\$1,016.07	\$493.76	\$1,035.02	\$474.81	\$0.00	\$474.81
831 CONCESSIONS	\$0.00	\$6,247.00	\$11,552.76	\$3,708.40	\$14,091.36	\$0.00	\$14,091.36
901 CLASS PROJECTS	\$0.00	\$8,494.53	\$1,188.27	\$6,352.26	\$3,330.54	\$0.00	\$3,330.54
930 DAYCARE	\$0.00	\$73,107.84	\$1,483.54	\$58,498.13	\$16,093.25	\$700.00	\$15,393.25
940 BOX TOPS/TARGET	\$0.00	\$61.80	\$173.58	\$0.00	\$235.38	\$0.00	\$235.38
950 BAND - STUDENTS	\$0.00	\$3,911.27	\$487.31	\$4,253.80	\$144.78	\$0.00	\$144.78
960 STEM PROGRAM	\$0.00	\$17,837.85	\$4,817.24	\$712.70	\$21,942.39	\$0.00	\$21,942.39
970 KINDNESS COUNTS	\$0.00	\$0.00	\$950.08	\$79.92	\$870.16	\$0.00	\$870.16
980 YEARBOOK	\$0.00	\$0.00	\$3,504.42	\$2,346.95	\$1,157.47	\$0.00	\$1,157.47
988 ADMINISTRATION	\$0.00	\$4,364.49	\$2,817.60	\$5,035.63	\$2,146.46	\$0.00	\$2,146.46
990 LIBRARY	\$0.00	\$15,553.14	\$14,701.49	\$10,285.04	\$19,969.59	\$493.56	\$19,476.03
991 BUILDERS CLUB	\$0.00	\$7,014.50	\$2,855.90	\$3,408.47	\$6,461.93	\$0.00	\$6,461.93
992 LEADERSHIP	\$0.00	\$8,766.76	\$5,896.53	\$7,949.03	\$6,714.26	\$1,775.55	\$4,938.71
995 ART CLASS	\$0.00	\$2,664.52	\$531.05	\$1,352.10	\$1,843.47	\$0.00	\$1,843.47
<b>Total</b>	<b>\$0.00</b>	<b>\$180,431.12</b>	<b>\$59,171.97</b>	<b>\$130,610.36</b>	<b>\$108,992.73</b>	<b>\$3,019.01</b>	<b>\$105,973.72</b>



Corporate Account Name: OAKDALE SCHOOL  
Account Name: OAKDALE SCHOOL

Corporate Number: 00005015  
Account Ending In: 1955

**Corporate Account Summary**

Previous Account Balance	\$5,719.06	<b>Statement Open/Close Date</b>	<b>04/01/2026 - 04/30/2026</b>
Payments and Credits	\$5,719.06	Days This Period	30
Purchases and Debits	\$5,094.28	Credit Limit	\$20,000.00
Cash Advances	\$0.00	Available Credit	\$14,905.00
<b>Fees</b>	\$0.00	Cash Limit	\$0.00
<b>Finance Charges</b>	\$0.00	Available Cash	\$0.00
New Ending Balance	\$5,094.28	<b>Payment Due Date</b>	<b>05/26/2026</b>
		Payment Amount Due	\$5,094.28

**Questions?** View your account information online at [www.prosperitybankusa.com](http://www.prosperitybankusa.com) or call our Customer Service Center toll free at 1-855-340-8771 or international phone number at 1-301-945-5745.

**Send Billing Inquiries and Correspondence to:**  
P.O. Box 2087, Omaha, NE 68103-2087

**Mail Payments to:** Prosperity Bank, Department #351, P. O. Box 21228, Tulsa, OK 74121-1228

**Important Information**

THANK YOU FOR CHOOSING PROSPERITY BANK FOR YOUR CREDIT CARD NEEDS.

General Fund: \$1,313.78

Activity Fund: \$1,181.58

Oakdale School Foundation: \$2,598.92

Prosperity Bank  
402 Cypress St. Suite 100  
Abilene, TX 79601-5123



Account Ending In 1955  
**Payment Due Date** 05/26/2026  
**New Balance** \$5,094.28  
**Minimum Payment Due** \$5,094.28

Make Check Payable To: \$

OAKDALE SCHOOL  
10901 N SOONER RD  
EDMOND OK 73013-8304



Prosperity Bank  
Department #351  
P.O. Box 21228  
Tulsa, OK 74121-1228



405469420008194800000509428000005094285

**LOST OR STOLEN CARDS:** If you notice the loss or theft of your credit Card or a possible unauthorized use of your Card, you should contact us immediately:

ADDRESS:

Prosperity Bank  
Credit Card Department  
402 Cypress St., Suite 100  
Abilene, Texas 79601

Telephone:

855-340-8771  
International Telephone:  
301-945-5745

Generally, you will not be liable for any unauthorized use that occurs after you notify us. You will have zero (0) liability unless we reasonably determine, based on substantial evidence, that you were fraudulent or negligent in the handling of your Card or Account. And you may be liable for unauthorized use that occurs before your notice to us. In any case, your liability will not exceed the lesser of \$50 or the amount of money, property, labor, or services obtained by the unauthorized use before notification to us.

**PAYMENT OPTIONS:** To make a payment by phone, call us toll free at 855-340-8771 and follow the instructions provided or speak to a customer service representative. To make a payment online or to set up automatic monthly payments, visit our credit card website at <https://spendtrack.fiservapp.com/prosperity-bank/> (registration required).

**MAILED PAYMENTS:** Mail your payments to the payment address specified on the statement. Overnight payments may be sent to: Prosperity Bank, ATTN: Credit Card Department, Department 351, P.O. Box 21228, Tulsa, OK, 74121-1228. Use the enclosed envelope and include the payment coupon from the bottom of the statement with your check.

**ADDRESS and EMAIL CHANGES:** Please call Customer Service toll free at 855-340-8771 and speak to a customer service representative.

**DISPUTES:**

It is your responsibility to review your statement or other documentation regarding transactions on your Account, such as without limitation reports or notices, promptly upon receipt.

If you think there is an error on your statement, write to us at:

Credit Cardholder Services Disputes  
P.O. Box 2087  
Omaha, NE 68103-2087

or call us at 1-855-340-8771, and tell us your name, Account number, dollar amount of the suspected error, and a description of the problem.

You agree to provide notice of, and at our request, reasonable documentation, regarding the problem within a reasonable time (not to exceed sixty (60) calendar days) from the date of discovery or your receipt of the first statement, report, or notice reflecting the problem, whichever occurs first, unless applicable law provides otherwise. If you fail to notify us of any discrepancy within sixty (60) calendar days of receipt of a monthly statement containing such information, you shall be precluded from asserting such discrepancy against us, and we shall not be liable for any losses resulting from your failure to give timely notice.

**BALANCE COMPUTATION METHOD:** Here is how we compute the balance subject to finance charge: We figure the balance subject to finance charge on your Account by the "average daily balance" (including current transactions) method. To get the "average daily balance," we take the beginning balance on your Account each day, add any new purchases/advances/fees, and subtract any unpaid interest or other finance charges and any payments or credits. This gives us the daily balance. Then, we add all the daily balances for the billing cycle and divide the total by the number of days in the billing cycle. This gives us the "average daily balance," which will be the balance subject to the finance charge.

**PAYING INTEREST:** You will not pay a finance charge on Credit Purchases if you fully pay your Account each month by the due date shown on your statement.



Account Name: OAKDALE SCHOOL

Account Ending In: 1955

**Corporate Account Activity**

<b>OAKDALE SCHOOL</b>					
<b>Card Ending In 1955</b>					
<b>Post Date</b>	<b>Tran Date</b>	<b>Reference Number</b>	<b>Transaction Description</b>		<b>\$Amount</b>
04/15	04/15	7421703FT00XSMKZZ	PAYMENT BY MAIL ABILENE TX		5,719.06-
<b>Total Activity</b>					5,719.06-
<b>Total Fees This Period</b>					0.00
04/30	04/30		Interest Charge on Purchases		0.00
04/30	04/30		Interest Charge on Cash Advances		0.00
<b>Total Interest This Period</b>					0.00

**Cardholder Account Activity**

<b>CARL JOHNSON</b>						
<b>Card Ending In 6719</b>						
<b>Post Date</b>	<b>Tran Date</b>	<b>Reference Number</b>	<b>Transaction Description</b>	<b>Total Amount</b>	<b>\$2,021.61</b>	<b>\$Amount</b>
04/01	03/31	2401134FA2X81TMH2	AMAZON MARK* BG48F7GR1 AMAZON.COM/MA WA			65.76
04/01	03/31		PURCHASE ID:			
04/01	03/31		ORDER DATE :03/31/2026			
04/01	03/31		ITEM DESCRIPTION:Order Summary			
04/01	03/31		ITEM QUANTITY: 10000			
04/01	03/31		UNIT COST: 65.7600			
04/01	04/01	2401134FB2X541D00	AMAZON MARK* BG4252V71 AMAZON.COM/MA WA			30.33
04/01	04/01		PURCHASE ID:			
04/01	04/01		ORDER DATE :04/01/2026			
04/01	04/01		ITEM DESCRIPTION:Order Summary			
04/01	04/01		ITEM QUANTITY: 10000			
04/01	04/01		UNIT COST: 30.3300			
04/01	04/01	2401134FB2X6NYSJJ	AMAZON MARK* BG8UZ3501 AMAZON.COM/MA WA			609.13
04/01	04/01		PURCHASE ID:			
04/01	04/01		ORDER DATE :04/01/2026			
04/01	04/01		ITEM DESCRIPTION:Order Summary			
04/01	04/01		ITEM QUANTITY: 10000			
04/01	04/01		UNIT COST: 609.1300			
04/02	04/02	2401134FQ2X6VTWYL	AMAZON MARK* BG1AW1PB0 AMAZON.COM/MA WA			49.48
04/02	04/02		PURCHASE ID:			
04/02	04/02		ORDER DATE :04/02/2026			
04/02	04/02		ITEM DESCRIPTION:Order Summary			
04/02	04/02		ITEM QUANTITY: 10000			
04/02	04/02		UNIT COST: 49.4800			
04/03	04/03	2469216FD2ZJSGR3W	AMAZON MKTPL*BG1OG17S1 Amzn.com/bill WA			199.00
04/03	04/03		PURCHASE ID:			
04/03	04/03		ORDER DATE :000000			
04/03	04/03	2494300FEBSSVGLVR	DUNKIN #356000 THE VILLAGE OK			75.92
04/05	04/05	2401134FF2X8Q70QS	AMAZON MARK* B79UV9BT2 AMAZON.COM/MA WA			105.98



Account Name: OAKDALE SCHOOL

Account Ending In: 1955

**Cardholder Account Activity (continued)**

Post Date	Tran Date	Reference Number	Transaction Description	\$Amount
04/05	04/05		PURCHASE ID:	
04/05	04/05		ORDER DATE :04/05/2026	
04/05	04/05		ITEM DESCRIPTION:Order Summary	
04/05	04/05		ITEM QUANTITY: 10000	
04/05	04/05		UNIT COST: 105.9800	
04/07	04/07	2413746FJ011L8MFN	AUTOZONE #0516 EDMOND OK	43.98
04/07	04/07		PURCHASE ID:	
04/07	04/07		ORDER DATE :04/07/2026	
04/07	04/07		ITEM DESCRIPTION:FINAL CHARGE 50/50 ANTIF	
04/07	04/07		ITEM QUANTITY: 20000	
04/07	04/07		UNIT COST: 21.9900	
04/07	04/07	2435589FHHVB23SBQ	EDCO AWARDS AND SPECIALTI HTTP://EDCOCO FL	263.59
04/07	04/07		PURCHASE ID:	
04/07	04/07		ORDER DATE :000000	
04/09	04/09	2401134FK2X7S9PS1	AMAZON MARK* BC5DN1U61 AMAZON.COM/MA WA	149.97
04/09	04/09		PURCHASE ID:	
04/09	04/09		ORDER DATE :04/09/2026	
04/09	04/09		ITEM DESCRIPTION:Order Summary	
04/09	04/09		ITEM QUANTITY: 10000	
04/09	04/09		UNIT COST: 149.9700	
04/09	04/09	2469216FKBT6QXW83	AMAZON MKTPL*BY9T48ZF2 Amzn.com/bill WA	80.13
04/09	04/09		PURCHASE ID:	
04/09	04/09		ORDER DATE :000000	
04/15	04/15	2401134FT2X4X2MFV	AMAZON MARK* B704B26Q1 AMAZON.COM/MA WA	59.99
04/15	04/15		PURCHASE ID:	
04/15	04/15		ORDER DATE :04/15/2026	
04/15	04/15		ITEM DESCRIPTION:Order Summary	
04/15	04/15		ITEM QUANTITY: 10000	
04/15	04/15		UNIT COST: 59.9900	
04/16	04/16	2401134FS2X4YQ5L9	AMAZON RETA* BS06H33L2 WWW.AMAZON.CO WA	42.99
04/16	04/16		PURCHASE ID:	
04/16	04/16		ORDER DATE :04/16/2026	
04/16	04/16		ITEM DESCRIPTION:Order Summary	
04/16	04/16		ITEM QUANTITY: 10000	
04/16	04/16		UNIT COST: 42.9900	
04/16	04/16	2469216FSBN3JM15H	AMAZON MKTPL*BS9CR6A12 Amzn.com/bill WA	24.49
04/16	04/16		PURCHASE ID:	
04/16	04/16		ORDER DATE :000000	
04/17	04/17	2469216FVBP73FY23	AMAZON MKTPL*BY0WS2N81 Amzn.com/bill WA	54.86
04/17	04/17		PURCHASE ID:	
04/17	04/17		ORDER DATE :000000	
04/20	04/20	2401134FY2X4DVDSR	AMAZON MARK* B70RW0WM0 AMAZON.COM/MA WA	7.69
04/20	04/20		PURCHASE ID:	
04/20	04/20		ORDER DATE :04/20/2026	
04/20	04/20		ITEM DESCRIPTION:Order Summary	



Account Name: OAKDALE SCHOOL

Account Ending In: 1955

**Cardholder Account Activity (continued)**

Post Date	Tran Date	Reference Number	Transaction Description	\$Amount
04/20	04/20		ITEM QUANTITY: 10000	
04/20	04/20		UNIT COST: 7.6900	
04/22	04/22	2401134G02X8LJWBP	AMAZON RETA* BY4GA3XV0 WWW.AMAZON.CO WA	11.90
04/22	04/22		PURCHASE ID:	
04/22	04/22		ORDER DATE :04/22/2026	
04/22	04/22		ITEM DESCRIPTION:Order Summary	
04/22	04/22		ITEM QUANTITY: 10000	
04/22	04/22		UNIT COST: 11.9000	
04/23	04/23	2401134G12X4VGHNN	AMAZON MARK* BJ2VS03U2 AMAZON.COM/MA WA	116.79
04/23	04/23		PURCHASE ID:	
04/23	04/23		ORDER DATE :04/23/2026	
04/23	04/23		ITEM DESCRIPTION:Order Summary	
04/23	04/23		ITEM QUANTITY: 10000	
04/23	04/23		UNIT COST: 116.7900	
04/28	04/28	2401134G62X5KWDTW	AMAZON MARK* BS6XE4T10 AMAZON.COM/MA WA	29.63
04/28	04/28		PURCHASE ID:	
04/28	04/28		ORDER DATE :04/28/2026	
04/28	04/28		ITEM DESCRIPTION:Order Summary	
04/28	04/28		ITEM QUANTITY: 10000	
04/28	04/28		UNIT COST: 29.6300	

**STEVEN HUFF**  
Card Ending In 9424

**Total Amount \$3,072.67**

Post Date	Tran Date	Reference Number	Transaction Description	\$Amount
04/02	04/02	2405523FDLE5355X2	ALL AMERICAN PIZZA EDMOND OK	455.00
04/02	04/02		PURCHASE ID:	
04/02	04/02		ORDER DATE :000000	
04/02	04/02	2469216FQ2ZQHD070	IN *AROUND THE TABLE 405-2551900 OK	258.50
04/02	04/02		PURCHASE ID:	
04/02	04/02		ORDER DATE :04/02/2026	
04/02	04/02		ITEM DESCRIPTION:BOX LUNCH	
04/02	04/02		ITEM QUANTITY: 150000	
04/02	04/02		UNIT COST: 13.5000	
04/02	04/02		ITEM DESCRIPTION:SALAD TRIO	
04/02	04/02		ITEM QUANTITY: 30000	
04/02	04/02		UNIT COST: 12.0000	
04/02	04/02		ITEM DESCRIPTION:DELIVERY FEE	
04/02	04/02		ITEM QUANTITY: 10000	
04/02	04/02		UNIT COST: 20.0000	
04/08	04/08	2405523FKLLE47L40	ALL AMERICAN PIZZA EDMOND OK	42.00
04/08	04/08		PURCHASE ID:	
04/08	04/08		ORDER DATE :000000	
04/13	04/13	2480197FPLTE6DPH5	TLC - EDMOND OKLAHOMA CITY OK	49.99
04/13	04/13		PURCHASE ID:	
04/13	04/13		ORDER DATE :04/13/2026	



Account Name: OAKDALE SCHOOL

Account Ending In: 1955

**Cardholder Account Activity (continued)**

Post Date	Tran Date	Reference Number	Transaction Description	\$Amount
04/14	04/14	2405523FTLSV4P9W3	ALL AMERICAN PIZZA EDMOND OK	35.00
04/14	04/14		PURCHASE ID:	
04/14	04/14		ORDER DATE :000000	
04/15	04/15	2405523FSLVYZR4V7	ALL AMERICAN PIZZA EDMOND OK	56.00
04/15	04/15		PURCHASE ID:	
04/15	04/15		ORDER DATE :000000	
04/17	04/17	2401134FV2X83T0NK	MIXBOOK.COM MIXBOOK.COM CA	818.30
04/17	04/17	2460794FVLXHZJ6DJ	CROWN AWARDS INC 800-227-1557 NY	290.42
04/17	04/17		PURCHASE ID:	
04/17	04/17		ORDER DATE :04/17/2026	
04/17	04/17		ITEM DESCRIPTION:4" X 6" WOOD INSERT PLQ	
04/17	04/17		ITEM QUANTITY: 240000	
04/17	04/17		UNIT COST: 8.9900	
04/17	04/17		ITEM DESCRIPTION:BLAZE MUSIC MDL GLD	
04/17	04/17		ITEM QUANTITY: 240000	
04/17	04/17		UNIT COST: 0.5000	
04/17	04/17		ITEM DESCRIPTION:EXTRA CHARACTER CHARGE	
04/17	04/17		ITEM QUANTITY: 2640000	
04/17	04/17		UNIT COST: 0.1500	
04/17	04/17		ITEM DESCRIPTION:SHIPPING & HANDLING-TROPH	
04/17	04/17		ITEM QUANTITY: 10000	
04/17	04/17		UNIT COST: 57.9900	
04/20	04/20	2444500FY8PNYXGH1	FSP* GANDY INK 800-999-8137 TX	509.40
04/20	04/20		PURCHASE ID:	
04/20	04/20		ORDER DATE :000000	
04/20	04/20		ITEM DESCRIPTION:Deposit Line	
04/20	04/20		ITEM QUANTITY: 10000	
04/20	04/20		UNIT COST: 509.4000	
04/21	04/21	2480197FZM1WW44AA	J.W. PEPPER 800-345-6296 PA	71.70
04/21	04/21		PURCHASE ID:	
04/21	04/21		ORDER DATE :04/21/2026	
04/23	04/23	2402415G2M4JYH1TY	EL CUERVERO MEXICAN REST OKLAHOMA CITY OK	124.70
04/23	04/23		PURCHASE ID:	
04/23	04/23		ORDER DATE :000000	
04/27	04/27	2444500G600MYYNPH	STAMPS.COM 888-434-0055 DC	200.00
04/27	04/27		PURCHASE ID:	
04/27	04/27		ORDER DATE :000000	
04/27	04/27		ITEM DESCRIPTION:Shipping Services	
04/27	04/27		ITEM QUANTITY: 10000	
04/27	04/27		UNIT COST: 200.0000	
04/28	04/28	2471705G685W2HJBZ	EPN TRAVEL SERVICES STUD888-3230974 PA	150.00
04/28	04/28		PURCHASE ID:	
04/28	04/28		ORDER DATE :000000	
04/28	04/28		ITEM DESCRIPTION:TRAVEL AGENCIES/TOUR OPER	
04/28	04/28		ITEM QUANTITY: 10000	



Account Name: OAKDALE SCHOOL

Account Ending In: 1955

**Cardholder Account Activity (continued)**

Post Date	Tran Date	Reference Number	Transaction Description	\$Amount
04/28	04/28		UNIT COST: 150.0000	
04/29	04/29	2411641G7MMAR5HJK	DIGITALSPACE 888-740-0502 NV	11.66
04/29	04/29		PURCHASE ID:	
04/29	04/29		ORDER DATE :04/29/2026	

**Finance Charges**

Type of Balance	Ending Balance	Annual Percentage Rate (APR)	Balance Subject To Interest Rate (ADB)	Interest Charge	Promo End Date
Purchases	\$5,094.28	0.00%	\$0.00	\$0.00	
Cash Advance	\$0.00	0.00%	\$0.00	\$0.00	
Balance Transfer	\$0.00	0.00%	\$0.00	\$0.00	

**2026 Total Year-to-Date**

Total fees charged in 2026	\$0.00
Total interest charged in 2026	\$0.00



# Oakdale Public School

## Encumbrance Register

**Options:** Year: 2025-2026, Date Range: 3/7/2026 - 3/14/2026, Fund(s): GEN FUND-FOR OP, Building, BOND FUND #37

Fund	PO No	Date	Vendor No	Vendor	Description	Amount
11	24	07/01/2025	3667	COLLECT ED	E-RATE SERVICES	927.99
11	33	07/01/2025	4042	HILAND DAIRY FOODS COMPANY, LLC	MILK	5,000.00
11	37	07/01/2025	597	HAGAR RESTAURANT	REPAIRS ON STEAMER	232.00
11	80	07/01/2025	4360	CALEB C BRYANT	CPR INSTRUCTION	300.00
11	196	03/13/2026	4777	CHRISTOPHER CLOVIS	GOLF COACH	1,500.00
11	197	03/14/2026	3571	OSDE CHILD NUTRITION PROGRAMS	REIMURSEMENT FOR OVER PAYMENT	5.20
11	198	03/14/2026	4778	LAURA MANWELL	GOLF COACH	500.00
21	3	07/01/2025	4	OKLAHOMA NATURAL GAS	GAS SERVICE	4,000.00
21	30	07/01/2025	4385	WAXIE'S ENTERPRISES LLC	CLEANING SUPPLIES	1,000.00
21	33	07/01/2025	3950	COMFORT WORKS INC	HEATING AND AIR MAINTENANCE	26,270.54
21	40	07/01/2025	48	REPUBLIC SERVICES #060	TRASH HAULING	2,000.00
21	50	07/01/2025	4728	BRADY INDUSTRIES OF KANSAS LLC	MAINTENANCE SUPPLIES	500.00
21	58	03/09/2026	4776	FLOOD RESCUE OF OKLAHOMA	MOLD ABATEMENT	6,857.46

<b>Non-Payroll Total:</b>	<b>\$49,093.19</b>
<b>Payroll Total:</b>	<b>\$6,739.17</b>
<b>Balance Forward:</b>	<b>\$16,701,608.54</b>
<b>Report Total:</b>	<b>\$16,757,440.90</b>

## Payment Register

Options: Year: 2025-2026, Fund Account: GEN FUND-FOR OP, Date Range: 4/10/2026 - 5/9/2026, Print Payroll Payments: False, Print Details: False

Payment No	Date	Vendor No	Vendor	Type	Date Voided	Void Amount	Amount
2342	04/20/2026	4079	ON BROADWAY PIZZA CO				\$1,073.50
2343	04/20/2026	3617	OAK HALL CAP & GOWN				\$2,675.00
2344	04/20/2026	3242	SOUTHERN NAZARENE UNIVERSI				\$600.00
2345	04/20/2026	3667	COLLECT ED				\$927.99
2346	04/20/2026	4341	QUO VADIMUS TECH LLC				\$10,396.01
2347	04/28/2026	85	AMERICAN FIDELITY				\$53.28
2348	04/28/2026	481	EGID				\$714.32
2472	05/09/2026	4557	BEN E KEITH LOCKBOX				\$10,195.87
2473	05/09/2026	3795	BIMBO BAKERIES USA				\$695.83
2474	05/09/2026	3488	FRONTIER PRODUCE				\$1,399.50
2475	05/09/2026	4360	CALEB C BRYANT				\$300.00
2476	05/09/2026	4777	CHRISTOPHER CLOVIS				\$1,500.00
2477	05/09/2026	4753	DEBORAH HUFF				\$2,500.00
2478	05/09/2026	4414	EXCEL FOOD MART, INC				\$1,997.58
2479	05/09/2026	4734	FOLLETT CONTENT SOLUTIONS, L				\$1,236.26
2480	05/09/2026	597	HAGAR RESTAURANT				\$232.00
2481	05/09/2026	4042	HILAND DAIRY FOODS COMPANY				\$4,946.74
2482	05/09/2026	4625	KYLE M FLEISCHOOD				\$1,500.00
2483	05/09/2026	4778	LAURA MANWELL				\$500.00
2484	05/09/2026	4713	LEGACY INDOOR SPORTS				\$5,000.00
2485	05/09/2026	5	SYLOGISTEd, Inc.				\$128.01
2486	05/09/2026	4079	ON BROADWAY PIZZA CO				\$2,302.50
2487	05/09/2026	4366	JULIE B MOORE, OTR/L				\$4,869.00
2488	05/09/2026	3571	OSDE CHILD NUTRITION PROGRA				\$5.20
2489	05/09/2026	67	OSSBA				\$150.00
2490	05/09/2026	941	GOVERNMENT ACCOUNT SERVIC				\$47.64
2491	05/09/2026	3693	PROSPERITY BANK				\$1,313.78
2492	05/09/2026	204	QUILL CORPORATION				\$414.59
2493	05/09/2026	3637	SHELLEY RYLAND				\$4,322.50
2494	05/09/2026	4548	THE CENTER FOR EDUCATION LA				\$507.50
						<b>Non-Payroll Total:</b>	<b>\$62,504.60</b>
						<b>Payroll Total:</b>	<b>\$555,903.02</b>
						<b>Balance Forward:</b>	<b>\$5,103,929.66</b>
						<b>Total:</b>	<b>\$5,722,337.28</b>

## Payment Register

Options: Year: 2025-2026, Fund Account: Building, Date Range: 4/10/2026 - 5/10/2026, Print Payroll Payments: False, Print Details: False

Payment No	Date	Vendor No	Vendor	Type	Date Voided	Void Amount	Amount
163	04/20/2026	3950	COMFORT WORKS INC				\$9,502.75
164	05/10/2026	49	ALERT 360				\$117.51
165	05/10/2026	48	REPUBLIC SERVICES #060				\$556.36
166	05/10/2026	4728	BRADY INDUSTRIES OF KANSAS L				\$644.05
167	05/10/2026	3346	CITY GREASE				\$300.00
168	05/10/2026	70038	CITY OF OKLAHOMA CITY				\$1,956.57
169	05/10/2026	3352	CLASSIC PAPER SUPPLY, INC.				\$62.10
170	05/10/2026	3950	COMFORT WORKS INC				\$8,321.50
171	05/10/2026	4776	FLOOD RESCUE OF OKLAHOMA				\$6,857.46
172	05/10/2026	3932	GREEN COUNTRY ELECTRIC AND				\$1,325.00
173	05/10/2026	4000	GREENTURF INC				\$4,558.42
174	05/10/2026	4711	JONES HARDWARE AND LUMBER				\$29.07
175	05/10/2026	503	LOWE'S				\$85.72
176	05/10/2026	3	OKLAHOMA GAS& ELECTRIC				\$12,160.33
177	05/10/2026	4	OKLAHOMA NATURAL GAS				\$2,307.11
178	05/10/2026	4299	CORNERSTONE PLUMBING				\$1,148.60
179	05/10/2026	3408	SUMNERONE				\$99.00
180	05/10/2026	3644	SUPERIOR LINEN				\$1,253.65
181	05/10/2026	3554	TLC ENTERPRISES LLC				\$3,886.53
182	05/10/2026	4436	MCCLARY ENTERPRISES				\$275.00
183	05/10/2026	4385	WAXIE'S ENTERPRISES LLC				\$489.58
<b>Non-Payroll Total:</b>							<b>\$55,936.31</b>
<b>Payroll Total:</b>							<b>\$0.00</b>
<b>Balance Forward:</b>							<b>\$619,193.67</b>
<b>Total:</b>							<b>\$675,129.98</b>

# Oakdale Public School

## Revenue/Expenditure Summary

**Options:** Fund: 61, Date Range: 7/1/2025 - 4/30/2026

	<b>Begin Balance</b>	<b>Receipts</b>	<b>Adjusting Entries</b>	<b>Payments</b>	<b>Cash End Balance</b>	<b>Unpaid POs</b>	<b>End Balance</b>
801 SPORTS	\$0.00	\$31,391.35	\$7,718.44	\$25,592.91	\$13,516.88	\$49.90	\$13,466.98
810 CHEER	\$0.00	\$1,016.07	\$493.76	\$1,035.02	\$474.81	\$0.00	\$474.81
831 CONCESSIONS	\$0.00	\$6,247.00	\$11,552.76	\$3,708.40	\$14,091.36	\$0.00	\$14,091.36
901 CLASS PROJECTS	\$0.00	\$8,494.53	\$1,188.27	\$6,352.26	\$3,330.54	\$0.00	\$3,330.54
930 DAYCARE	\$0.00	\$73,107.84	\$1,483.54	\$58,498.13	\$16,093.25	\$700.00	\$15,393.25
940 BOX TOPS/TARGET	\$0.00	\$61.80	\$173.58	\$0.00	\$235.38	\$0.00	\$235.38
950 BAND - STUDENTS	\$0.00	\$3,911.27	\$487.31	\$4,253.80	\$144.78	\$0.00	\$144.78
960 STEM PROGRAM	\$0.00	\$17,837.85	\$4,817.24	\$712.70	\$21,942.39	\$0.00	\$21,942.39
970 KINDNESS COUNTS	\$0.00	\$0.00	\$950.08	\$79.92	\$870.16	\$0.00	\$870.16
980 YEARBOOK	\$0.00	\$0.00	\$3,504.42	\$2,346.95	\$1,157.47	\$0.00	\$1,157.47
988 ADMINISTRATION	\$0.00	\$4,364.49	\$2,817.60	\$5,035.63	\$2,146.46	\$0.00	\$2,146.46
990 LIBRARY	\$0.00	\$15,553.14	\$14,701.49	\$10,285.04	\$19,969.59	\$493.56	\$19,476.03
991 BUILDERS CLUB	\$0.00	\$7,014.50	\$2,855.90	\$3,408.47	\$6,461.93	\$0.00	\$6,461.93
992 LEADERSHIP	\$0.00	\$8,766.76	\$5,896.53	\$7,949.03	\$6,714.26	\$1,775.55	\$4,938.71
995 ART CLASS	\$0.00	\$2,664.52	\$531.05	\$1,352.10	\$1,843.47	\$0.00	\$1,843.47
<b>Total</b>	<b>\$0.00</b>	<b>\$180,431.12</b>	<b>\$59,171.97</b>	<b>\$130,610.36</b>	<b>\$108,992.73</b>	<b>\$3,019.01</b>	<b>\$105,973.72</b>

## Payment Register

**Options:** Year: 2025-2026, Fund Account: ACTIVITY FUND, Date Range: 4/15/2026 - 5/11/2026, Print Payroll Payments: True, Print Details: False

Payment No	Date	Vendor No	Vendor	Type	Date Voided	Void Amount	Amount
229	04/15/2026	4207	ISABELLA PICA				\$400.00
230	04/15/2026	4206	NICOLAS PICA				\$300.00
231	04/22/2026	4207	ISABELLA PICA				\$400.00
232	04/22/2026	4206	NICOLAS PICA				\$300.00
233	04/24/2026	3115	HEARTLAND FESTIVAL, INC				\$3,051.00
234	04/27/2026	4221	COMMUNITY CHRISTIAN SCHOO				\$200.00
235	04/27/2026	3207	CROSSINGS CHRISTIAN SCHOOL				\$160.00
236	04/27/2026	3082	SHAWNEE HIGH SCHOOL				\$175.00
237	04/27/2026	99999	OAKDALE SCHOOL DISTRICT				\$4,774.64
238	04/29/2026	4207	ISABELLA PICA				\$400.00
239	04/29/2026	4206	NICOLAS PICA				\$300.00
240	04/30/2026	4207	ISABELLA PICA				\$1,640.00
241	04/30/2026	465	BANK OF OKLAHOMA				\$14.95
242	05/06/2026	4207	ISABELLA PICA				\$400.00
243	05/06/2026	4206	NICOLAS PICA				\$300.00
244	05/07/2026	38	DEMCO INC.				\$493.56
245	05/11/2026	3693	PROSPERITY BANK				\$1,181.58
<b>Non-Payroll Total:</b>							<b>\$14,490.73</b>
<b>Payroll Total:</b>							<b>\$0.00</b>
<b>Balance Forward:</b>							<b>\$118,494.77</b>
<b>Total:</b>							<b>\$132,985.50</b>

## Payment Register

**Options:** Year: 2025-2026, Fund Account: BOND FUND #37, Date Range: 5/10/2026 - 5/10/2026, Payment Range: 39 - 40,  
Print Payroll Payments: False, Print Details: False

Payment No	Date	Vendor No	Vendor	Type	Date Voided	Void Amount	Amount
39	05/10/2026	842	CMS WILLOWBROOK INC				\$100,256.55
40	05/10/2026	644	LARSON DESIGN GROUP				\$4,860.42
<b>Non-Payroll Total:</b>							<b>\$105,116.97</b>
<b>Payroll Total:</b>							<b>\$0.00</b>
<b>Balance Forward:</b>							<b>\$6,677,186.83</b>
<b>Total:</b>							<b>\$6,782,303.80</b>

**Oakdale Public School**  
**Revenue/Expenditure Summary**

**Options:** Fund: 11, Date Range: 7/1/2025 - 4/30/2026

	<b>Begin Balance</b>	<b>Receipts</b>	<b>Adjusting Entries</b>	<b>Payments</b>	<b>Cash End Balance</b>	<b>Unpaid POs</b>	<b>End Balance</b>
002 AFTERCARE	\$0.00	\$26,163.31	\$0.00	\$30,937.91	(\$4,774.60)	\$0.00	(\$4,774.60)
<b>Total</b>	<b>\$0.00</b>	<b>\$26,163.31</b>	<b>\$0.00</b>	<b>\$30,937.91</b>	<b>(\$4,774.60)</b>	<b>\$0.00</b>	<b>(\$4,774.60)</b>

**Oakdale Public School**  
**Revenue/Expenditure Summary**

**Options:** Fund: 61, Date Range: 7/1/2025 - 4/30/2026

	<b>Begin Balance</b>	<b>Receipts</b>	<b>Adjusting Entries</b>	<b>Payments</b>	<b>Cash End Balance</b>	<b>Unpaid POs</b>	<b>End Balance</b>
930 DAYCARE	\$0.00	\$73,107.84	\$1,483.54	\$58,498.13	\$16,093.25	\$700.00	\$15,393.25
<b>Total</b>	<b>\$0.00</b>	<b>\$73,107.84</b>	<b>\$1,483.54</b>	<b>\$58,498.13</b>	<b>\$16,093.25</b>	<b>\$700.00</b>	<b>\$15,393.25</b>

# Oakdale Public School

## Revenue/Expenditure Summary

**Options:** Fund: 61, Date Range: 7/1/2025 - 4/30/2026

	<b>Begin Balance</b>	<b>Receipts</b>	<b>Adjusting Entries</b>	<b>Payments</b>	<b>Cash End Balance</b>	<b>Unpaid POs</b>	<b>End Balance</b>
995 ART CLASS	\$0.00	\$2,664.52	\$531.05	\$1,352.10	\$1,843.47	\$0.00	\$1,843.47
<b>Total</b>	<b>\$0.00</b>	<b>\$2,664.52</b>	<b>\$531.05</b>	<b>\$1,352.10</b>	<b>\$1,843.47</b>	<b>\$0.00</b>	<b>\$1,843.47</b>

**AGREEMENT FOR SPECIFIC ASSISTANCE BETWEEN**

**OAKDALE PUBLIC SCHOOLS**

**&**

**THE BOARD OF COUNTY COMMISSIONERS OF OKLAHOMA COUNTY**

**THIS AGREEMENT (Agreement)** is entered into this 29th day of April, 2025~~6~~ between the **OAKDALE PUBLIC SCHOOLS**, a public school organized and existing under the laws of the State of Oklahoma (the "School"), and the **BOARD OF COUNTY COMMISSIONERS OF OKLAHOMA COUNTY**, a political subdivision organized and existing under the laws of the State of Oklahoma (the "County"). The terms and conditions of the General Mutual Cooperation Agreement for the current fiscal year entered into between the parties is incorporated by reference herein and made a part of this specific agreement.

**RECITALS:**

**WHEREAS**, the parties have previously entered into a General Mutual Cooperation Agreement allowing for the County to assist School in reconstruction, repairs and improvements, which cover the fiscal year beginning July 1, 2025 and ending June 30, 2026; and

**WHEREAS**, the School, physically located at 10901 N Sooner in Edmond, Oklahoma, is in need of assistance with the excavation and removal of material from the main campus located at 10901 N. Sooner Road, Edmond, Oklahoma, and

**WHEREAS**, it is in the mutual interest and benefit of School and the County to share in the construction, repair, and/or improvement to the aforementioned school property; and

**WHEREAS**, the School desires to retain the use of the County's equipment, materials, personnel and subcontractors to reconstruct, repair or improve that portion of the aforementioned school property; and

**WHEREAS**, the County agrees to provide the equipment and personnel for the project at an estimated cost of Ten Thousand Twenty-Two Dollars and Sixty-Four Cents (\$10,022.64), and in no event to exceed Ten Thousand Five Hundred Twenty-Three Dollars and Seventy-Seven Cents (\$10,523.77) without further written agreement; and

**WHEREAS**, Oklahoma County Highway Cash will be made 100% whole with District 1 General Funds reimbursing Highway Cash for the cost of labor, equipment, supply, inventory, and outsourcing (\$10,523.77) to Oklahoma County Highway Cash; and

**WHEREAS**, this agreement is authorized and provided for by Oklahoma Statutes, specifically by Oklahoma Statutes Title 19, 339 (18) and Title 19, 359; and

**NOW, THEREFORE**, in consideration of the mutual covenants and agreements contained herein, the parties agree as follows:

1. **PURPOSE OF AGREEMENT:** This agreement is a part of and an addendum to the original Mutual Cooperation Agreement entered into between the parties on the 1st day of July, 2025. The purpose of this agreement is to permit the County to assist the School with improvements, repairs, or maintenance on property owned by the School. County may, at their discretion, perform the requested work on property that is owned by the School, more specifically described as: construction of a parking lot located on property owned by School.

2. **DESCRIPTION OF SERVICE:**

A. **COUNTY SHALL:**

- I. Administer the Agreement.
- II. Agree to incur costs for labor, equipment, surveys, materials, traffic control, and subcontractors as necessary to complete the work/project in an amount not to exceed Ten Thousand Five Hundred Twenty-Three Dollars and Seventy-Seven Cents (\$10,523.77), as outlined in the attached project estimates. (See Attachment "A").
- III. Provide joint oversight and inspection of the project.

B. **SCHOOL SHALL:**

- I. Provide for joint inspection and oversight of the project.

3. **AUTHORIZED ADMINISTRATOR(S):** For purposes of administering this agreement, the Chief Deputy of County's District No. 1 and the School Superintendent shall be responsible for administering this agreement. Also, it is expressly understood that County shall have no right, claim or title to any real or personal property used in this project, other than that already owned by the County.

4. **PROPERTY OWNERSHIP:** School represents and warrants to County that the School owns any and all real property involved in the project and upon which work is to be performed. In the event that any person or entity attempts to hold County liable for work done on the property subject to this specific agreement, the School agrees to defend and indemnify County against any loss related to such defense, including attorney fees and costs, to the extent allowed by Oklahoma law.

5. **COMMENCEMENT OF AGREEMENT:** This agreement shall commence on the date on which the Agreement is executed in writing by all parties and will continue through completion of the project, or until the end of the current fiscal year. The parties agree that they remain bound by the terms of the original General Mutual Cooperation Agreement executed between the parties.


6. **COMMENCEMENT OF PROJECT:** The project shall commence after the agreement has been fully executed and based on the availability of the County's equipment, materials, personnel, etc.

7. **FISCAL YEAR LIMITATION:** The parties agree and understand that in the event that the project outlined in this Agreement is not completed during the fiscal year in which it was executed, Municipality must submit payment for any work completed during the fiscal year, and if funds or materials are required to be encumbered for the succeeding fiscal year in order to complete the project, that the parties are must enter into another written Agreement.
8. **INDEMNIFICATION:** Other than the defend and indemnify provisions outlined in paragraph # 4 "Property Ownership", the parties further agree and covenant that in exchange for the considerations set out herein that each party shall only be liable for their own negligence, acts or omissions, or the negligence, acts or omissions of their respective employees, nor shall any party be required to indemnify another party for the same. The parties understand and agree that this Agreement in no way relieves the School of their primary statutory duties to maintain said property in a reasonably safe condition, including for the duration of the above described project agreement.
9. **REVISIONS AND AMENDMENTS:** The parties agree that the terms of this Agreement may not be revised or amended in any form or fashion without obtaining a fully executed written revision or written amendment from the parties.
10. **ASSIGNMENT:** The rights and duties under this agreement are not assignable except upon prior written consent of the parties hereto.
11. **THIRD PARTY BENEFICIARIES:** No third party beneficiaries are created by this agreement and that is the express intent of the parties hereto.
12. **COMPLETE AGREEMENT:** The parties acknowledge and agree that this Agreement sets out the complete and total agreement between the parties.
13. **VENUE:** In the event of litigation regarding any aspect of this Agreement, the parties agree that venue shall lie in the District Court of Oklahoma County.
14. **CAPTIONS:** The captions, title, and headings contained herein are for convenience only and shall not control the interpretation of any provision.
15. **INTERPRETATION:** Any word used herein in the singular shall also include the plural, and vice versa, except where a contrary intention plainly appears. The masculine shall also include the feminine and vice versa.
16. **PRESERVATION OF RIGHTS:** Neither party waives any defenses or rights available to them under the Governmental Tort Claims Act, 51 O.S. § 151 et seq., common law, pertinent statutes and constitutions.
17. **WHOLE AGREEMENT:** This document constitutes the entire agreement, covenants and provisions agreed upon by the parties, and no agent or administrator to this agreement has authority to alter or change the terms hereof, except as provided herein, and except as provided in the original General Mutual Cooperation Agreement. No party shall be bound by any statement or representation not in conformity with this written agreement.

18. **TERMINATION OF AGREEMENT:** Prior to commencement of the project, either party may terminate this agreement by giving seven (7) days written notice to the administrator for the other party. After the commencement of the project, either party may terminate this agreement, with or without cause, by giving written notice of such termination to the administrator of the other party. In the event work has already begun by County, School shall reimburse the County for any work already performed. Otherwise, this Agreement shall terminate automatically upon completion of the project and upon receipt of the final payment of expenses by the municipality.

*APPROVED* by the *Oakdale Public Schools of Oklahoma County, Oklahoma* this \_\_\_\_\_ day of \_\_\_\_\_, 2026.

**OAKDALE PUBLIC SCHOOLS**

By  \_\_\_\_\_  
Superintendent of School

ATTEST:

\_\_\_\_\_  
Board Clerk

COUNTY

*ADOPTED AND APPROVED* by the Board of County Commissioners this 29th day  
of April, 2026.


BOARD OF COUNTY COMMISSIONERS  
OF OKLAHOMA COUNTY, OKLAHOMA

By Brian Mangham  
Chairman

By Jason Lowe  
Member

By Paul Foster  
Member

ATTEST:

Marissa Ineart   
County Clerk

*APPROVED as to form and legality* this 20 day of April, 2026.

[Signature]  
Assistant District Attorney

PO 22605849



**Project Work Order Estimate**  
**Scope of Work for Work Order Number: 29772**

Thu, April 16, 2026

Page: 1

**Activity: 66020 - GENERAL LABOR - SCHOOL**  
**Request from Oakdale. Excavation & Haul Off Material.**

<b>Cost Type</b>	<b>Task</b>	<b>Description</b>	<b>Qty</b>	<b>Rate</b>	<b>Amount</b>
Equipment	1	DA327-00107 - 2021 JOHN DEERE 85G EXCAVATOR-36" BUCKET	8.0000	48.97	\$391.76
Equipment	1	DA302-00194 - 1998 INTERNATIONAL HAUL TRUCK TRACTOR	4.0000	71.10	\$284.40
Equipment	1	DA302-00247 - 2024 Freightliner w/ 15' Dump Body	32.0000	94.94	\$3,038.08
Equipment	1	DA312-00114 - 2013 JOHN DEERE 624 K LOADER	24.0000	95.09	\$2,282.16
Equipment	1	DA323-00105 - 2015 JOHN DEERE 650K CRAWLER DOZER	16.0000	125.64	\$2,010.24
<b>Equipment for Task 1 - Request from Oakdale. Excavation &amp; Haul Off Material.</b>			<b>Sub Totals:</b>		<b>\$8,006.64</b>
<b>Equipment Sub Totals:</b>					<b>\$8,006.64</b>
Labor	1	Equipment Operator Labor Rate	84.0000	24.00	\$2,016.00
<b>Labor for Task 1 - Request from Oakdale. Excavation &amp; Haul Off Material.</b>			<b>Sub Totals:</b>		<b>\$2,016.00</b>
<b>Labor Sub Totals:</b>					<b>\$2,016.00</b>
<b>Labor &amp; Equipment &amp; Overhead Combined Total:</b>					<b>\$10,022.64</b>
<b>Supply, Inventory, Outsourcing Sub Total:</b>					
				<b>Contingency (5%):</b>	<b>\$501.13</b>
<b>Grand Totals:</b>					<b>\$10,523.77</b>



# Oakdale School District

---

10901N. Sooner Rd  
Edmond, OK 73013

[www.oakdale.org](http://www.oakdale.org)

O:405-771-3373  
F:844-678-5846

Jason Lowe  
Commissioner  
Oklahoma County District 1

Brian L. Jasper  
Superintendent  
Oklahoma County District 1

Mr. Jasper,

Oakdale Public School requests the assistance of Oklahoma County District 1 in the removal and disposal of dirt.

The area east of our new construction requires a modified grade to be safe and useful. We are requesting that District 1 assist in removing the material we don't need and hauling it to an appropriate site.

Please provide instructions for submitting any required documentation.

Thank you for your assistance,

Carl Johnson, Ph.D.  
Superintendent  
Oakdale Public School



```

=====
Bill To                               Requisition 12606288-00  FY 2026
OK COUNTY - DISTRICT 1
7321 NE 23rd St.
                                     Acct No:
                                     10191000-54047
OKLAHOMA CITY, OK                   Review:
73141                                 Buyer: 6065d1temtra
                                     Status: Released
                                     Page 1
=====

```

```

=====
Vendor                               Ship To
OKLAHOMA COUNTY HWY DIS1             OK COUNTY - DISTRICT 1
320 ROBERT S KERR AVE                7321 NE 23rd St.
                                     OKLAHOMA CITY, OK 73141
OKLAHOMA CITY, OK 73102
=====

```

```

Deliver To
OK COUNTY - DISTRICT 1
7321 NE 23rd St.
OKLAHOMA CITY, OK 73141

```

Date Ordered	Vendor Number	Date Required	Ship Via	Terms	Department
04/17/26	1000135				District #1

LN	Description / Account	Qty	Unit Price	Net Price
001	Oak Dale School Excavation & Haul off WO# 29772	1.00	10523.77000	10523.77
		EACH		
1	10191000-54047		10523.77	

```

Ship To
OK COUNTY - DISTRICT 1
7321 NE 23rd St.
OKLAHOMA CITY, OK 73141

Deliver To
OK COUNTY - DISTRICT 1
7321 NE 23rd St.
OKLAHOMA CITY, OK 73141

```

```

Requisition Link
Requisition Total 10523.77

```

```

***** General Ledger Summary Section *****
Account 10191000-54047 District #1
Amount 10523.77
Remaining Budget 9898.69
Project Reimbursement

```

```

***** Approval/Conversion Info *****
Activity Date Clerk Comment
Approved 04/17/26 Mike "Tex" Cobb Auto approved by orig/apprvr:
Approved 04/17/26 Temetra Trail Auto approved by orig/apprvr:
Queued 04/17/26 Albert Rodriguez Auto approved by orig/apprvr:
Queued 04/17/26 Bailey Owens Auto approved by orig/apprvr:
Queued 04/17/26 Brooke Smith Auto approved by orig/apprvr:

```



Bill To  
 OK COUNTY - DISTRICT 1  
 7321 NE 23rd St.

Requisition 12606288-00 FY 2026

OKLAHOMA CITY, OK  
 73141

Acct No:  
 10191000-54047  
 Review:  
 Buyer: 6065d1temtra  
 Status: Released

Page 2

Vendor  
 OKLAHOMA COUNTY HWY DIS1  
 320 ROBERT S KERR AVE

Ship To  
 OK COUNTY - DISTRICT 1  
 7321 NE 23rd St.

OKLAHOMA CITY, OK 73102

OKLAHOMA CITY, OK 73141

Deliver To  
 OK COUNTY - DISTRICT 1  
 7321 NE 23rd St.

OKLAHOMA CITY, OK 73141

Date Ordered	Vendor Number	Date Required	Ship Via	Terms	Department
04/17/26	000135				District #1
LN	Description / Account	Qty	Unit Price	Net Price	
Queued	04/17/26 Deborah McDonald	Auto	approved by orig/apprvr:		
Queued	04/17/26 Maria Pinley	Auto	approved by orig/apprvr:		
Queued	04/17/26 Sheena McGrady	Auto	approved by orig/apprvr:		
Queued	04/17/26 Chantel Boso	Auto	approved by orig/apprvr:		
Pending	Chantel Boso	Auto	approved by orig/apprvr:		
Pending	Ashley Franklin	Auto	approved by orig/apprvr:		
Pending	Ashley McMichael	Auto	approved by orig/apprvr:		
Pending	Lauren Adkison	Auto	approved by orig/apprvr:		
Pending	Long Tran	Auto	approved by orig/apprvr:		

Time stamp	Email Address	Name of Camp (just put tutoring if you are 1:1 tutoring)	Dates of camp (with start and end dates)	Is your camp A.M., P.M., or evening?	What part(s) of the building are you planning on using?	Staff or volunteers involved in the camp (list all names)	What is the age-level of your campers?	Approximately how many students?	Content or subject of your camp?
5/6/2026 1	sshelton@oakdale.org	Tutoring	Month of June and July (sporadic dates; I have not set yet)	PM	5th grade pod, but can be flexible	N/A	3rd-6th	1:1	ELA/ Math
5/6/2026 1	kvaughn@oakdale.org	Basketball Camp	Tuesday May 26- Friday May 29	Both last session 3-5 PM	Both Gyms	Kamron Vaughn Amy Andrews Matthew Hall Michael Lowe Jr	1st-8th grade	80-100	Basketball Skills
5/6/2026 1	khare@oakdale.org	Oakdale STEAM Camp	June 22-25	all day	Kindergarten Pod	Kasey Hare, Carolyn Morrison, Bryce Atkins, Lauren Branscum, Brie Camp, Lisa Pitts, Charlie Burns	K-5th Grades	200 students	STEAM Coding, BrickLab, Art, Space Camp, Arcade Camp, etc
5/6/2026 1	khare@oakdale.org	1:1 Tutoring	June, July, & beginning of August	Am or PM	My classroom, but may move to another pod if they are cleaning my classroom.	Kasey Hare	Various ages, K-7th Grades	7- at various times	Math and/or reading
5/7/2026 7	tcone@oakdale.org	1:1 tutoring	May 29 - July 31	AM	My classroom	Me	2nd grade - 5th grade	4	ELA/Math
5/7/2026 8	emarsh@oakdale.org	1:1 tutoring	June 1- Aug 1	am	my classroom	Emily Marsh	5-9	1 at a time	reading, math
5/7/2026 9	hdean@oakdale.org	Tutoring	6/8-8/3	P.M.	Room 618	Haley Dean	8-12	5	Tutoring
5/7/2026 1	cparish@oakdale.org	Tutoring	June, I have not decided on a day.	It will start in the AM and continue into early PM	My classroom. I will move where needed to not interrupt the custodian crew.	Only me and my student	Pre-K - 3rd graders	5	All subjects
5/7/2026 1	rclement@oakdale.org	1:1 Tutoring	Thursdays	A.M.	My classroom	None	Kinder -3rd	3	Tutoring
5/7/2026 1	gmccarty@oakdale.org	Rare Birds with Mighty Minds	June 1-4th or June 8-11th	P.M.	Counseling office-playground	Sofi Woodson	Incoming 2nd-5th & 6th-8th	8-10/group	Self-esteem, embracing your unique self, coping skills
5/8/2026 5	nzavarce@oakdale.org	Volleyball Camp	June 2-4	Am, pm	Gym	Candace DuRegger	3-8	40-50	Volleyball
5/8/2026 1	lhanneman@oakdale.org	Cheer Camp (if OSF approves)	August 3, 4, 5	August 3, 11:30-7:00, August 4, 9:00-4:00, August 5, 9:00-4:00	Old Gym	Lindy Hanneman, Jenna Foster	6th, 7th, and 8th	19	Cheer Camp

Tiffany Cone, Track: \$1750.00

Christopher Clovis, Golf: \$1500.00;

Kyle Fleishood, Golf: \$1500.00;

Laura Manwell, Golf: \$500.00



# Software Service Order Agreement

Term of Agreement: 7/1/2026 - 6/30/2027

**Customer:** OAKDALE PUBLIC SCHOOLS  
**Addr:** 10901 NORTH SOONER ROAD  
EDMOND OK 73013

SYLOGISTED, INC.  
**Addr:** 908 EAST 35TH STREET  
SHAWNEE, OK 74804

**October Membership:** 690

**Phone:** (800)749-5691 **Email:** accounts@sylogist.com

## Re-Occurring Fiscal Year Charges

Re-Occurring Fiscal Year Charges are based on the membership (200 minimum) from the latest October 1 count.

Description	Total
Appropriated Funds	\$5,475.00
Payroll	NA
- Usage Fee Included In Appropriated Funds	
Treasurer	\$1,140.00
Activity Funds	\$562.50
Personnel	\$1,140.00
Purchase Requisition	\$1,140.00
Fixed Assets	NA
Document Management	NA
Time & Talent	NA
Accounting Query Designer	NA

**Total 2026-2027 Fiscal Year Charges:** \$9,457.50

### Terms and Conditions

- The software charge includes phone support for one (1) designated contact per application, excluding Document Management. Additional contacts can be added at an additional cost. SylogistEd, Inc. shall provide the phone support during normal business hours of 8:00 a.m. to 5:00 p.m. CST, Monday through Friday, exclusive of holidays. SylogistEd, Inc. shall have full and free access to the Customer equipment and software to provide support.
- The software charge includes interactive online training via training videos and webinars.
- On-site training (by appointment only) will be charged \$1000.00 per day from 9:30 a.m. through 3:30 p.m. CST and round-trip mileage at the current IRS mileage rate. Additional time is \$165.00 per hour.
- For each renewal, the fees may, at SylogistEd's discretion, increase by an amount not to exceed 5%, no more than one time per annum.
- Customer agrees that SylogistEd, Inc. shall not be liable to Customer for any incidental or consequential damages, loss, or other liabilities arising out of the use or inability to use the software.
- The terms and conditions of this agreement supersede those of all previous agreements between the parties with respect to the use of the software and such use hereafter is subject to the terms and conditions of this agreement.
- This agreement shall be governed by the Laws of the State of Oklahoma.

**Software as a Service**

1. Definitions.
  - (a) Application means the software and other material used by SylogistEd, Inc. to access, configure, and provide the Services. The Application(s) identified in the Service Order Agreement are licensed on a subscription basis and delivered as hosted online software using the Software as a Service (SaaS) model.
  - (b) Charges mean the fees payable by Customer pursuant to the Software Service Order Agreement.
  - (c) Customer Data means any data that Customer sends to the Service and any data that Customer receives from the Service in fulfillment of a request, excluding any content deemed to be Intellectual Property.
  - (d) Documentation means instructions and examples pertaining to appropriate integration with and proper use of the Services.
  - (e) Intellectual Property Rights means all intellectual property rights, including patents, trademarks, trade name, service mark, copyright, trade secrets, know-how, process, technology, development tool, ideas, concepts, design right, domain names, moral right, database right, methodology, algorithm and invention, and any other proprietary information (whether registered, unregistered, pending, or applied for).
  - (f) Privacy Policy and Terms of Service means the SylogistEd, Inc. Privacy Policy and Terms of Service in effect at the time of this Agreement, which is incorporated herein by reference and which is subject to change without notice.
  - (g) Service shall have the meaning set forth in the SylogistEd, Inc. Privacy Policy and Terms of Service.
  - (h) Service Order Agreement means the Software Service Order Agreement delivered by SylogistEd, Inc. to Customer which sets forth the service and fees for the current fiscal year.
  - (i) Usage Data means any data that SylogistEd, Inc. collects or generates during the performance of the Service, including non-confidential elements of Customer Data.
2. Service.
  - (a) SylogistEd, Inc. Obligations. SylogistEd, Inc. hereby agrees, subject to and during the term of this Agreement and the Privacy Policy and Terms of Service: (i) to provide the Service to Customer; (ii) to grant or procure a right for Customer to access and use the Application as a part of the Service only; (iii) to use all commercially reasonable efforts to prevent unauthorized access to, or use of, the Service; and (iv) to notify customer promptly of any such unauthorized access to, or use of, the Service that SylogistEd, Inc. becomes aware of (provided SylogistEd, Inc. is not required to actively monitor the Customer's account access).
  - (b) Customer Obligations. Customer hereby agrees, as allowed by Oklahoma constitution or law, subject to and during the term of this Agreement: (i) to comply with the Privacy Policy and Terms of Service; (ii) not to reverse-engineer the Application; (iii) to use an appropriate integration method for the volume and/or nature of queries to the Service; (iv) that it is solely responsible for all of its activities and for the accuracy, integrity, legality, reliability, and appropriateness of all Customer Data; (v) to use all commercially reasonable efforts to prevent unauthorized access to, or use of, the Service, and notify SylogistEd, Inc. promptly of any such unauthorized use; (vi) to comply with all applicable laws in using the Service, wherever such use occurs, and not use, or require SylogistEd, Inc. to use, any Customer Data obtained via the Service for any unlawful purpose; and (vii) to accurately represent Customer's use of the Service and data obtained from the Service.
3. Service Order Agreement. The Service Order Agreement will be effective only when signed by Customer and SylogistEd, Inc. Any modifications or changes to the Services under any executed Service Order Agreement will be effective only if and when memorialized in a mutually agreed written change order signed by both Parties.
4. Access to the Service, Attribution, and Charges.
  - (a) Customer Accounts. Customer must provide SylogistEd, Inc. with valid contact information prior to receiving access to the Service in compliance with the Privacy Policy and Terms of Service.
  - (b) Data Preparation & Configuration. Customer will ensure that: (i) Customer Data is in proper format as specified by the Documentation; and (ii) no other software, data, or equipment having an adverse impact on the Service has been introduced.
5. Availability, Maintenance, and Technical Support.
  - (a) Availability & Maintenance. SylogistEd, Inc. will use commercially reasonable efforts to make the Service available. Downtime for maintenance, upgrades, enhancement, or any other reason, may be scheduled at any time.
  - (b) Technical Support. Unless otherwise provided in the Service Order Agreement, SylogistEd, Inc. will offer technical and customer support on a first-come, first-served basis during regular business hours, Central Standard Time.
6. Third-Party Software Integration Acknowledgements, Representations, and Agreements. SylogistEd, Inc. will provide software as part of the Service that will allow the Customer to share data with third-party applications.
  - (a) It is understood and agreed that SylogistEd, Inc. is not responsible for the security of the data once it has been provided by the Customer to a third party using the Service.
  - (b) It is understood and agreed that SylogistEd, Inc. is not releasing this data to a third party. It is acknowledged and agreed that under no circumstance shall SylogistEd, Inc. be deemed to be a direct or indirect transferor of information/data to any third party. SylogistEd, Inc. is only providing software that will allow the Customer to share data with third-party applications.
  - (c) Customer hereby represents that it is aware of all duties, requirements and restrictions set forth under The Family Educational Rights and Privacy Act (FERPA) (20 U.S.C. § 1232g; 34 CFR Part 99), Children's Online Privacy Protection Act (COPPA) (15 U.S.C. §§ 6501-6508), the Health Insurance Portability and Accountability Act (HIPPA), the Health Information Technology for Economic and Clinical Health Act (HITECH Act), and any other law, statute, or ordinance.
  - (d) Customer hereby represents that it shall perform all duties and requirements set forth under The Family Educational Rights and Privacy Act (FERPA) (20 U.S.C. § 1232g; 34 CFR Part 99), Children's Online Privacy Protection Act (COPPA) (15 U.S.C. §§ 6501-6508), the Health Insurance

Portability and Accountability Act (HIPAA), the Health Information Technology for Economic and Clinical Health Act (HITECH Act), and any other law, statute, or ordinance.

(e) Customer hereby represents that it shall refrain from performing any act restricted under The Family Educational Rights and Privacy Act (FERPA) (20 U.S.C. § 1232g; 34 CFR Part 99), Children's Online Privacy Protection Act (COPPA) (15 U.S.C. §§ 6501-6508), the Health Insurance Portability and Accountability Act (HIPAA), the Health Information Technology for Economic and Clinical Health Act (HITECH Act), and any other law, statute, or ordinance.

(f) Customer hereby agrees that it shall, as allowed by Oklahoma constitution or law, defend, indemnify, reimburse, and make whole in any manner, SylogistEd, Inc. for any form of damages sustained as a direct or indirect result of the Customer's failure to follow any duty, requirement, restriction or other that is mandated under The Family Educational Rights and Privacy Act (FERPA) (20 U.S.C. § 1232g; 34 CFR Part 99), Children's Online Privacy Protection Act (COPPA) (15 U.S.C. §§ 6501-6508), the Health Insurance Portability and Accountability Act (HIPAA), the Health Information Technology for Economic and Clinical Health Act (HITECH Act), and any other law, statute, or ordinance. This shall include any and all attorney fees, costs, expenses, expert fees, and other that SylogistEd, Inc. could incur.

(g) Customer represents that it shall obtain all necessary authorizations (including authorizations from any parent/guardian, student or other interested third person) as required by law before any information/data is transferred by it to a third party.

### 7. Intellectual Property Rights.

(a) SylogistEd, Inc. Intellectual Property. SylogistEd, Inc. and its third-party licensors (as appropriate) shall retain all Intellectual Property Rights in the Service and Usage Data. Except as expressly set forth herein, no SylogistEd, Inc. Intellectual Property Rights are granted to Customer.

(b) Customer Intellectual Property. Customer retains all Intellectual Property Rights in Customer Data. Customer grants SylogistEd, Inc. a license: (i) to use the Customer Data to the extent necessary for the performance of the Services; (ii) to keep an archival copy subject to the provisions of the relevant data protection regulations; and (iii) to create Usage Data by collecting non-confidential elements of Customer Data, such as dates, location codes, equipment types, carriers, and other data as determined by SylogistEd, Inc. and in conjunction with automatically generated data such as IP address, time, and frequency of access.

(c) Feedback Relating to Services. SylogistEd, Inc. shall have a perpetual, royalty-free, irrevocable, worldwide license to use and incorporate into the Services any suggestions, ideas, modification requests, feedback, or other recommendations related to the Services provided by or on behalf of Customer.

(d) Derivatives and Compilations of Usage Data. SylogistEd, Inc. shall have a perpetual, royalty-free, irrevocable, world-wide license to use, sublicense, and publish derivative works and compilations resulting from collection and analysis of Usage Data.

### 8. Privacy and Personal Information. (a) SylogistEd, Inc.'s Privacy Policy. SylogistEd, Inc.'s Privacy Policy and Terms of Service, made a part hereof, is available at <https://www.sylogist.com/privacy-policy>.

### 9. Term; Termination.

(a) Term. This Agreement is effective for the fiscal year set forth in the Software Service Order Agreement unless earlier terminated by either Customer or SylogistEd, Inc.

(b) Termination Without Cause. Customer may terminate this Agreement by discontinuing use of the Service and paying any remaining charges. SylogistEd, Inc. may terminate this Agreement by discontinuing its provision of the Service to Customer, in which case Customer is not obligated to pay any remaining charges.

(c) Breach. SylogistEd, Inc. may terminate this Agreement if Customer breaches any material obligation provided hereunder, including Customer's obligations specified in Section 2(b), which breach is not cured within five (5) days of SylogistEd, Inc.'s notice to Customer.

### 10. Confidential & Proprietary Information. For purposes of this Section, a Party receiving Confidential & Proprietary Information (as defined below) shall be the "Recipient" and the Party disclosing such information shall be the "Discloser."

(a) Acknowledgment. Customer hereby acknowledges that the Service (including any Documentation, source code, translations, compilations, partial copies, and derivative works used in connection with the Services) is provided using confidential and proprietary information belonging exclusively to SylogistEd, Inc. or its third-party licensor (as appropriate), and SylogistEd, Inc. hereby acknowledges that Customer Data contains confidential and proprietary information belonging exclusively to Customer or relating to its affairs (in each case, "Confidential & Proprietary Information").

Confidential & Proprietary Information does not include: (i) information already known or independently developed by Recipient outside the scope of this relationship by personnel not having access to any Confidential & Proprietary Information; (ii) information in the public domain through no wrongful act of Recipient, or (iii) information received by Recipient from a third-party who was free to disclose it.

(b) Covenant. Recipient hereby agrees that during the Term and at all times thereafter it shall not use, commercialize, or disclose such Confidential & Proprietary Information of the Discloser to any person or entity, except to its own employees and agents having a "need to know" (and who themselves are bound by similar nondisclosure restrictions), and to such other recipients as the Discloser may approve in writing; provided that all such recipients shall have first executed a confidentiality agreement in a form acceptable to Discloser. Recipient shall not: (i) alter or remove from any Confidential & Proprietary Information of the Discloser any proprietary legend, or (ii) decompile, disassemble, or reverse engineer the Confidential & Proprietary Information (and any information derived in violation of such covenant shall automatically be deemed Confidential & Proprietary Information owned exclusively by the Discloser). Recipient shall use at least the same degree of care in safeguarding the Confidential & Proprietary Information of the Discloser as it uses in safeguarding its own confidential information, but in any event at least reasonable care. Upon termination or expiration of this Agreement, and regardless of whether a dispute may exist, Recipient shall, upon request by Discloser, return or destroy (as instructed by Discloser) all Confidential & Proprietary Information of Discloser in its possession or control and cease all further use thereof.

(c) Injunctive Relief. Recipient acknowledges that violation of the provisions of this Section would cause irreparable harm to Discloser not adequately compensable by monetary damages. In addition to other relief, it is agreed that injunctive relief shall be available without necessity of posting bond to prevent any actual or threatened violation of such provisions.

### 11. Notices. Notices sent to either Party shall be effective when delivered in person or transmitted electronically, one (1) day after being sent by overnight



courier, two (2) days after being sent by first class mail postage prepaid to a physical address provided by the Customer, or five (5) days after being sent by email from SylogistEd, Inc. to the address in the Customer account. A copy of this Agreement and notices generated in good form shall be treated as "original" documents admissible into evidence unless a document's authenticity is genuinely placed in question.

- 12. Survival. Termination shall have no effect on the Parties' rights or obligations under Section 8 ("Privacy and Personal Information"); Section 10 ("Confidential & Proprietary Information"), Section 13 ("Independent Contractor Status"), any payment obligations or any provision which by its nature should survive.
- 13. Independent Contractor Status. Each Party and its employees and agents are independent contractors in relation to the other Party with respect to all matters arising under this Agreement. Nothing herein shall be deemed to establish a partnership, joint venture, association, or employment relationship between the Parties. Each Party shall remain responsible and shall, as allowed by Oklahoma constitution or law, indemnify and hold harmless the other Party, for the withholding and payment of all federal, state and local personal income, wage, earnings, occupation, social security, worker's compensation, unemployment, sickness and disability insurance taxes, payroll levies, or employee benefit requirements now existing or hereafter enacted and attributable to themselves and their respective people.
- 14. Miscellaneous. This document and the documents incorporated herein constitute the entire agreement between the Parties with respect to the subject matter hereof and supersede all other communications, whether written or oral. SylogistEd, Inc. reserves all rights not specifically granted herein. Neither Party shall be liable for delays caused by events beyond its reasonable control, except non-payment of amounts due hereunder shall not be excused by this provision. Any provision hereof found by a tribunal of competent jurisdiction to be illegal or unenforceable shall be automatically conformed to the minimum requirements of law and all other provisions shall remain in full force and effect. Waiver of any provision hereof in one instance shall not preclude enforcement thereof on future occasions.

Prepared By: Grant McLarnon

Date Prepared: 4/4/2026

Accepted By (please circle one): Superintendent / Board President

Signature: \_\_\_\_\_

Date Accepted: \_\_\_\_\_



**COMMON GOAL**  
SYSTEMS INC

Common Goal Systems, Inc.  
P.O. Box 392  
Lake Forest, IL 60045  
Phone: (630)592-4200  
Fax: (630)566-4202  
FEIN #36-4471064 W-9

**Subscription Order Form**

**Order Form #4528**

In accordance with the Common Goal Systems Terms of Service (version 3/2021), the school or district below ("the School") offers to enter into agreement with Common Goal Systems, Inc ("CGS") for the services ("Services"), period ("Period"), and payment terms ("Payment Terms") listed below.

The School	
<b>District Name:</b>	Oakdale School District
<b>Address:</b>	10901 N Sooner Rd
<b>City, State, Zip:</b>	Edmond OK 73013
<b>Phone:</b>	405-771-3373

Services						
Item #	Description	Paid Licenses	Min Grade Level	Max Grade Level	Yearly Unit Fee	Yearly Fee
1	TeacherEase	61			\$103.16	\$6,292.76
2	Admins	16			\$68.77	\$1,100.32
3	Core Student Management	745			\$4.08	\$3,039.60
4	Lunch	745			\$1.03	\$767.35
5	Discipline	745			\$1.03	\$767.35
6	Advanced Scheduling	300	6	12	\$1.03	\$309.00
7	Health Records	745			\$1.03	\$767.35
8	Enterprise Data Access	745			\$1.03	\$767.35
9	Online Registration	745			\$1.03	\$767.35
10	Enhanced Parent Communication	745			\$2.03	\$1,512.35
<b>Total:</b>						<b>\$16,090.78</b>

Period
<b>Start Date:</b> 7/1/2026
<b>End Date:</b> 6/30/2027

Payment Terms
Due Upon Receipt

The undersigned, an authorized representative of the School, agrees to the Common Goal Systems Terms of Service (version 3/2021).

<b>Name:</b> Dr. Carl Johnson
<b>Title:</b> Superintendent
<b>Email:</b> cjohnson@oakdale.org
<b>Signature:</b>
<b>Date:</b>

Instructions	
1	Complete and sign this order form
2	Attach a check or purchase order. Make checks payable to "Common Goal Systems, Inc."
3	Return to Common Goal Systems, Inc. P.O. Box 392 Lake Forest, IL 60045 Fax: (630)566-4202
4	If you have questions, call 630-592-4200 x1 or email sales@common-goal.com

# OCCUPATIONAL THERAPY SERVICES CONTRACT

This contract is made between Moore Therapy Services, Inc. ("Moore"), Oklahoma City, and Oakdale Public Schools, Edmond, Oklahoma.

## SECTION ONE TERM OF CONTRACT

This contract shall run from August 1, 2026, through July 31, 2027.

## SECTION TWO SERVICES TO BE PROVIDED

Occupational therapy services shall be provided by Julie Moore, Registered and Licensed Occupational Therapist ("OTR/L"), a Certified Occupational Therapy Assistant ("COTA") selected by Ms. Moore and working under her supervision, and/or an OTR/L selected by Ms. Moore and working at her direction. Ms. Moore or the OTR/L shall personally perform all evaluations, discharges, and COTA supervisory duties. Additionally, the COTA or the OTR/L shall provide student therapy treatments as Ms. Moore determines appropriate in the exercise of her professional judgment. Evaluations, discharges, supervisory duties, and treatments may be offered virtually when warranted.

## SECTION THREE SERVICES TO BE PROVIDED UNDER UNIQUE CIRCUMSTANCES

When circumstances arise that require special scheduling accommodations, services, and/or fees, Moore and Oakdale Public Schools may agree to modify the terms of this contract to provide for the unique circumstances on a case-by-case basis. Such modifications shall be in writing and attached as an exhibit to this contract or as an addendum executed separately if the annual contract has already been signed.

## SECTION FOUR THERAPY SCHEDULE

Under this contract, occupational therapy services shall be provided for up to 2.5 days per week at Oakdale Public Schools. The number of treatment sessions or days of therapy each week may be increased by mutual agreement between Moore and Oakdale Public Schools if more students are added to the schedule or if student assessments indicate that additional therapy time is required. An addendum to the contract can be written at such time.

SECTION FIVE  
PAYMENTS UNDER THE CONTRACT

Oakdale Public Schools agrees to pay Moore at the rate of \$73.50 per hour per day for Oakdale Public Schools during the 2026-2027 school year. Oakdale Schools further agrees to pay Moore at the rate of \$77.00 per hour for services provided during the 2027 summer extended school year with a three-hour minimum charge. A \$47.00 flat rate will be paid for each therapy trip to Oakdale to compensate for drive time. Oakdale School District agrees to pay Moore \$125.00 per evaluation.

SECTION SIX  
COMPENSATION FOR COTA & OTR/L

Moore is solely responsible for all compensation and mileage reimbursement for the COTA and the OTR/L. Oakdale Schools has no obligation under this contract to compensate the COTA or the OTR/L.

SECTION SEVEN  
EMPLOYMENT RELATIONSHIP NOT CREATED

Nothing in this contract is intended, or shall be deemed, to constitute an employer/employee relationship between Moore and/or the COTA or OTR/L and Oakdale Public Schools.

SECTION EIGHT  
PROFESSIONAL JUDGMENT

Oakdale Public Schools acknowledges that Moore, the COTA, and the OTR/L determine how their duties should be performed in accordance with professional occupational therapy guidelines and practices.

SECTION NINE  
DOCUMENTATION

All required documentation of daily treatments shall be kept on record at Oakdale Public Schools by Moore.

SECTION TEN  
RESCHEDULING TREATMENTS

Moore shall reschedule any therapy treatments that are missed due to the absence of Moore or the COTA or the OTR/L. Moore may, but is not required to, reschedule therapy treatments that are missed by the student for any reason.

**SECTION ELEVEN  
OVERHEAD AND OTHER EXPENSES**

Oakdale Schools is not responsible for paying any expenses incurred by Moore, the COTA, or the OTR/L that are not specifically mentioned in this contract, including but not limited to health, accident, or professional liability insurance, continuing education costs, therapy supplies not already available at the schools, and overhead expenses.

**SECTION TWELVE  
TAXES**

Moore has the duty to report income received for all tax purposes and to report withholding, social security, federal unemployment, or any other taxes that may be payable under this contract.

**SECTION THIRTEEN  
NOTICES IN WRITING**

All notices under this contract shall be in writing.

**SECTION FOURTEEN  
ASSIGNMENTS PROHIBITED**

There shall be no assignment or transfer of this contract or any interest in this contract. Nothing in this provision shall be construed as prohibiting Moore from subcontracting with a COTA or OTR/L for the performance of appropriate services rendered under this contract.

**SECTION FIFTEEN  
TERMINATION**

This contract shall continue in force and govern all transactions between the parties.

**SECTION SIXTEEN  
MODIFICATION OF CONTRACT**

No modification of this contract is binding on either party unless the modification is in writing and signed by the parties.

**SECTION SEVENTEEN  
APPLICABLE LAW**

This contract shall be governed by the laws of the State of Oklahoma both as to interpretation and performance.

SECTION EIGHTEEN  
SEVERABILITY

All of the provisions of this contract are distinct and severable, and if any provision shall be deemed illegal, void, or unenforceable, it shall not affect the validity, legality or enforceability of any other provision or portion of this contract.

In witness whereof, the parties have executed this contract.

**MOORE THERAPY SERVICES, INC.**

Signature: Julie Moore OTRh

Title: OTR/L and Owner

Date: 4/1/2026

**OAKDALE PUBLIC SCHOOLS**

Signature: \_\_\_\_\_

Title: \_\_\_\_\_

Date: \_\_\_\_\_



This Service and Price agreement is entered into by and between Alcohol and Drug Testing Inc (ADTI), an Oklahoma Corporation and \_\_\_\_\_ in \_\_\_\_\_ County, Oklahoma (Client) to set forth the terms and provisions under which ADTI shall provide drug and alcohol testing services for the Client. In consideration of the mutual promises, covenants, and agreements set forth below, the adequacy of which are acknowledged, ADTI and the Client agree as follows:

49 CFR Part 40 states that, "All agreements, written or unwritten, between and among employers and service agents concerning the implementation of DOT drug and alcohol testing requirements are deemed, as a matter of law, to require compliance with all applicable provisions of Part 40 and DOT agency drug and alcohol testing regulations. Compliance with these provisions is a material term of all such agreements and arrangements."

### **D.O.T. and STATE CERTIFICATION**

ADTI adheres to all personnel, equipment and technical procedures required for Department of Transportation (DOT) certification. ADTI's personnel are all trained as Breath alcohol Technicians (BAT) and Certified Professional Collectors as set forth in CFR Part 40 and the Oklahoma Drug Free Workplace Act. All collectors are also nationally certified by the Drug and Alcohol Testing Industry Association (DATIA). Labs, MRO's and any contractors utilized by ADTI will be certified as per federal and state regulations.

### **METHOD OF TESTING**

Alcohol testing will be conducted using an approved breath alcohol testing device. These testing devices are listed on DOT's Conforming products list. Confirmation testing will be conducted on any individual with a breath alcohol result of 0.02 and above on their screen test. Testing of individuals for prohibited controlled substances will be accomplished through urine and or oral fluid collections. The substances tested for and laboratory utilized will comply with all rules and regulations set forth in CFR 49 Part 40 and the Oklahoma Drug Free Workplace Act.

### **LOCATION OF TESTING**

All testing and collections will be conducted at a site agreed upon by ADTI and the Client. All locations must be able to meet DOT and State guidelines.

### **COMMUNICATION OF TEST RESULTS**

ADTI will communicate all test results and interpretations of samples to the Designated Employer Representative (DER) in writing, by fax or through e-mail. ADTI will retain a signed list of Client's DERs at

our offices. Any written report of test results or interpretations shall be forwarded to the authorized DER via first class mail with "CONFIDENTIAL" stamped on the outer envelope. All DERs must designate a password on the DER form for identification before giving results and names of individuals to be tested over the phone, this is required by DOT

## **SUPPLIES**

Prices for the necessary supplies for the testing conducted are included in the prices charged to the Client.

## **LITIGATION SUPPORT**

If any governmental investigation, administrative proceeding or lawsuit is brought against said Client arising from or related to the testing performed by ADTI under this agreement, ADTI will provide administrative support to said Client in defense of any such investigation, proceeding or lawsuit. Such support shall include, but is not limited to, documentation of testing procedures and certified copies of test results. ADTI will also provide expert technical testimony for an additional cost.

## **NOTICE OF CLAIMS/LITIGATION**

The Client and ADTI agree to notify each other within three (3) business days of receipt of notice of any investigation, administrative proceeding, claim, demand or lawsuit arising from or related to any alcohol testing or collections performed by ADTI for the Client pursuant to this agreement. Each party shall provide full cooperation to the other party at all times during the pending of any such matter.

## **STATISTICAL REPORTS**

ADTI will provide statistical reports from the testing lab by July 31 and January 31 of each year of this contract. Additional reports can be provided at the request of the Client with an additional processing fee charged.

## **RULES AND REGULATIONS**

By law, CFR 49 Part 40, only certain services can be legally provided by ADTI. Adherence to all federal and state rules and regulations are the ultimate responsibility of the Client. As a service agent, unless expressly permitted, ADTI can only act as an adviser on actions to be taken by the Client.

## **PAYMENT TERMS**

The Client's payment will be due thirty (30) days following the date of the invoice. If payment is late there will be a \$10 fee added for every 30 days late.

## **DURATION OF AGREEMENT**

This agreement shall continue in from July 1, 2026 until June 30, 2027 and shall be deemed renewed upon the same terms and conditions unless either party advises the other of their intent not to renew. Notice of non-renewal shall be given in writing on letterhead prior to June 01 of each year.

## **PRICING**

ADTI agrees to keep the pricing held forth by this agreement firm for the duration. This agreement and the interpretation and enforcement thereof shall be governed by the laws of the state of Oklahoma.

On-Site Drug Testing	\$54.00
On-Site Alcohol Testing	\$34.00
Mileage	\$00.35 per mile
Oral Fluid Testing	\$ TBD

\*There is no annual fee charged.

This Contract sets forth the entire Agreement between ADTI and said Client with respect to the services set forth herein. If any term or provision of the Agreement is held invalid or unenforceable by a court of competent jurisdiction, the remaining terms and provisions shall nevertheless continue in full force and effect. Any amendment or modification made to this Agreement must be set forth in writing and signed by both parties hereto.

ACCEPTED BY: \_\_\_\_\_  
(PRINT NAME) (SIGNATURE)

TITLE: \_\_\_\_\_  
(fax)

COMPANY NAME: \_\_\_\_\_  
(PHONE)

COMPANY ADDRESS: \_\_\_\_\_  
\_\_\_\_\_  
\_\_\_\_\_

DATE: \_\_\_\_\_

ACCEPTED BY: \_\_\_\_\_ DATE: \_\_\_\_\_

# DESIGNATED EMPLOYEE REPRESENTATIVE

CLIENT NAME: \_\_\_\_\_

The below listed person(s) is designated as the Employee Representative (DER) for our company. The DER will be the contact person for scheduling of testing by phone and to receive all test results via email. Each DER will also need to provide a password for identification when notified by phone. ***THIS PERSON SHOULD NOT BE ON THE RANDOM DRUG TESTING LIST.***

## **DER to Schedule Random/Receive Results**

PRINT NAME: \_\_\_\_\_ EMAIL: \_\_\_\_\_

OFFICE PHONE: \_\_\_\_\_ CELL PHONE: \_\_\_\_\_

PRINT NAME: \_\_\_\_\_ EMAIL: \_\_\_\_\_

OFFICE PHONE: \_\_\_\_\_ CELL PHONE: \_\_\_\_\_

## **Billing Information**

PRINT NAME: \_\_\_\_\_ EMAIL: \_\_\_\_\_

OFFICE PHONE: \_\_\_\_\_ CELL PHONE: \_\_\_\_\_

## **CONTRACTUAL AGREEMENT FOR SPEECH-LANGUAGE PATHOLOGY SERVICES**

**School Year: 2026-2027**

This Contractual Agreement (“Agreement”) is entered into between **Oakdale Public Schools**, represented by the Superintendent or designee, and **Shelley Ryland, M.S., CCC/SLP-L** (“Contractor”), for the provision of Speech-Language Pathology services.

### **1. Services Provided**

The Contractor agrees to provide speech-language pathology services to students identified with speech and/or language impairments within Oakdale Public Schools. Services may include, but are not limited to:

- Evaluation and assessment
- Direct therapy services
- Indirect services (consultation, documentation, IEP development, progress monitoring)
- Collaboration with staff and families

All services will be provided in compliance with local, state, and federal regulations, including IDEA and Oklahoma State Department of Education (OSDE) guidelines.

### **2. Service Hours**

- **Minimum Service Commitment:** 14 hours per week
- **Maximum Service Commitment:** Up to 28 hours per week

Additional hours may be requested by the district based on student needs and must be mutually agreed upon.

### **3. Compensation**

Oakdale Public Schools agrees to reimburse the Contractor at a rate of:

**\$65.00 per hour**

for all **direct and indirect** speech-language pathology services, including but not limited to therapy, evaluations, IEP meetings, documentation, consultation, and required communication.

### **4. Billing and Payment Terms**

- Billing must be submitted by the last day of each month.
- Payment will be made within **30 days** of invoice submission.

## 5. Licensure and Insurance

The Contractor will provide proof of:

- Current Oklahoma Speech-Language Pathology licensure
- Certificate of Clinical Competence (CCC-SLP), if applicable
- Professional liability insurance

Documentation must be submitted prior to the initiation of services.

## 6. Access to Systems

Oakdale Public Schools will provide access to **EdPlan** and any other necessary systems to ensure compliance with documentation and service requirements.

## 7. Subcontracting (SLPA Services)

The Contractor may engage a **Speech-Language Pathology Assistant (SLPA)** as a subcontractor as needed under the following conditions:

- The SLPA holds current and valid Oklahoma licensure
- All SLPA services are supervised by the Contractor in accordance with OSDE and ASHA guidelines
- The Contractor retains full responsibility for supervision, service delivery, documentation, and compliance
- Prior notification and approval from Oakdale Public Schools administration is obtained before initiating SLPA services

## 8. Term of Agreement

This Agreement shall be effective from **August 1, 2026** through **June 18,2027**, unless terminated earlier in accordance with this Agreement.

## 9. Termination

Either party may terminate this Agreement with **thirty (30) days written notice**.

## 10. Professional and Compliance Standards

Services will be delivered in a manner consistent with IDEA, state regulations, and professional standards. Service delivery is contingent upon maintaining caseloads and service models that allow for appropriate, compliant implementation of IEP services, evaluations, and documentation.

---

**Agreed to and accepted by:**

---

Authorized Representative  
Oakdale Public Schools

Date: \_\_\_\_\_

---

Shelley Ryland, M.S., CCC/SLP-L  
Contractor

Date: \_\_\_\_\_

Phone: (405) 615-2913

Email: shelly.ryland.slp@gmail.com

---



4/9/2026

Todd Thomas  
OAKDALE SCHOOL  
10901 N Sooner Rd  
Edmond, OK 73013  
Quote: A913342329

**OAKDALE SCHOOL:**

Below is our proposal of recommended services, customized for your business needs identified during our discussions. If you ever need additional services, or just need an extra pickup, please give us a call at 405-745-4141. It's that easy.

**Service Details**

**SMALL CONTAINERS**

Service Change

Equipment Qty/Type/Size:	2 - 8.0 yard Containers	\$508.32 per month
Frequency:	3/Week	
Material Type:	Solid Waste	

Price Adjustment

Equipment Qty/Type/Size:	1 - 4.0 yard Container	Base Rate:	\$85.30 per month
Frequency:	1/week		
Material Type:	Solid Waste		

**Estimated Monthly Amount \***

Small Container Base Rates	\$593.62
Administrative Fee**	\$5.95
<b>Total Estimated Amount</b>	<b>\$599.57</b>

Adam Webb  
Republic Services

[awebb2@republicservices.com](mailto:awebb2@republicservices.com)  
[www.republicservices.com](http://www.republicservices.com)

\* The Total Estimated Amount is merely an estimate of your typical monthly invoice amount without one-time start-up charges (e.g., delivery). It does not include any applicable taxes or local fees, which would be additional charges on your invoice.

\*\*FRF, RPC, ERF and ADMIN: The Fuel Recovery Fee (FRF) and the Recycling Processing Charge (RPC) are variable charges that change monthly. For more information on the FRF, RPC, Environmental Recovery Fee (ERF) and Administrative Fee, please visit [www.republicservices.com/customer-support/fee-disclosures](http://www.republicservices.com/customer-support/fee-disclosures). The proposed rates above are valid for 30 days. This proposal is not a contract or agreement or an offer to enter into a contract or agreement. The purpose of this proposal is to set forth the proposed framework of service offerings and rates and fees for those offerings. Any transaction based upon this proposal is subject to and conditioned upon the execution by both parties of Republic Services' Customer Service Agreement.

Customer Service Agreement



INVOICE TO		SITE LOCATION	
CUSTOMER NAME	OAKDALE SCHOOL	SITE NAME	OAKDALE SCHOOL
ATTN	Todd Thomas	ADDRESS	10901 N Sooner Rd
ADDRESS	10901 N SOONER RD	CITY	Edmond, OK
CITY	EDMOND, OK	STATE	OK
STATE		SUITE	
ZIP CODE	73013-8304	ZIP CODE	73013
TEL. NO.	4052492078	TEL. NO.	(405)249-2078
		FAX NO.	
		AUTHORIZED BY	Todd Thomas
		TITLE	Todd Thomas
		CONTACT	Todd Thomas
		TITLE	

AGREEMENT NUMBER	A913342329
ACCOUNT NUMBER	060-3300504

EMAIL : [tthomas@oakdale.org](mailto:tthomas@oakdale.org)

NO	CONT. GRP	TYPE	SIZE	C	QTY	ACCT. TYPE	C/O	SERV. FREQUENCY	EST. LIFTS	S	P.O. REQ	RECPT. REQ	L/F CODE	OPEN/ CLOSE DATE	LIFT CHARGE	MONTHLY SERVICE	EXTRA LIFT	DISP RATE	ADDITIONAL CHARGES	SUPPLEMENTAL CHARGES	TC/RC CMP
N	1	FL	8.0 Yd(s)	N	2	P	N	6/1W			N	N	SE11	5/1/2026		\$508.32	\$180.13		Extra Yds \$25.00 All others at prevailing rates		02/58
O	1	FL	8.0 Yd(s)	N	2	P	N	4/1W			N	N	SE11	4/30/2026	\$471.91	\$471.91					
N	2	FL	4.0 Yd(s)	N	1	P	N	1/1W			N	N	SE11	5/1/2026		\$85.30	\$180.13		All others at prevailing rates		02/58
O	2	FL	4.0 Yd(s)	N	1	P	N	1/1W			N	N	SE11	4/30/2026		\$78.50					

Allied Waste Systems, Inc. DBA Allied Waste Services of Cordell, Allied Waste Services of Oklahoma City, Republic Services of Cordell, Republic Services of Oklahoma City

HEREINAFTER REFERRED TO AS THE "COMPANY"

The undersigned individual signing this Agreement on behalf of the Customer acknowledges that he or she has read and understands the terms and conditions of this Agreement and that he or she has the authority to sign the Agreement on behalf of the Customer.

BY :

TITLE:

BY:

(AUTHORIZED SIGNATURE)

(AUTHORIZED SIGNATURE)

TITLE:

CUSTOMER NAME (PLEASE PRINT)

DATE OF AGREEMENT

COMMENTS:

**Delivery Notes:**

Safety: No Safety Concerns

Fuel Recovery Fee - No, Environmental Recovery Fee - No, Administrative Fee - Yes  
Exempt from: Fuel Recovery Fee, Environmental Recovery Fee

See reverse for Terms and Conditions

<b>Continuing Contracts FY'27</b>					<b>Summer</b>	
Amy	Andrews		Carolyn	Morrison	Tim	Welch
Julie	Blevins		Chelsea	Mosley		
Andy	Boatman		Cindy	Parish		
Lauren	Branscum		Angela	Peterson		
Mandy	Bray		Lisa	Pitts		
Charlie	Burns		Nicole	Rihn		
Peggy	Cain		Andrea	Roe		
Brie	Camp		Sheila	Scott		
Shelby	Carter		Summer	Shelton		
Lee	Cavin		Breanna	Sizemore		
Lee	Charlton		Yurry	Stratton		
Teresa	Christison		Lori	Tipton		
Rachel	Clement		Taryn	Toles		
Tiffany	Cone		Tim	Welch		
Madeline	Dunn		Jill	Willhoite		
Ashlee	Edwards		Madison	Williams		
Lissa	Erb		Natalie	Zavarce		
Nora Lee	Evans		Rachel	Clement		
Christine	Ford		Stacy	Hensley		
Jenna	Foster		Jenny	Jones		
Kim	Hall		Trica	Keyser		
Matt	Hall		Michael D.	Lowe		
Lindy	Hanneman		Emily	Marsh		
Kasey	Hare		Gina	McCarty		
Tamra	Hartman		Amanda	Moore		
<b>New Hires Temp</b>						
Candace	DuRegger					
Kim	Hancock					
<b>Continuing on Temp contract</b>						
Chris	Hall					
Shilo	DeLuca					
Haley	Dean					
Bryce	Atkins					