

**Wakefield Community School
Board of Education Regular Meeting
Monday, September 14, 2015 7:00 PM**

The Board of Education Regular Meeting convened in open and public session on Monday, September 14, 2015 at 7:00 PM in the Board of Education Room at the Boardroom 802 Highland Street Wakefield, NE 68784.

President Brown informed the group of the Open Meetings Act posted in the room and accessible to all members of the public as required by law. All board members had received notice of the meeting and the meeting notice had been published/posted in a timely manner prior to the meeting date.

ATTENDANCE TAKEN AT 7:00 PM:

Opening Procedures

Call to Order

Open Meetings Act

Roll Call

Excuse Board Member Absences

Approval of Agenda

Motion to approve the agenda Passed with a motion by Mark Victor and a second by Bree Brown.

Tim Bebee: Yea

Mrs. Karen Borg: Yea

Bree Brown: Yea

Mr. Ben Donner: Yea

Julie Rose: Yea

Mark Victor: Yea

Yea: 6, Nay: 0

Awards and Special Recognition

Recognition of Visitors/Communication from the Public

FBLA National Convention Participants

WEA

Reports

Administrators

Elementary Principal Report

Secondary Principal Report

Superintendent Report

Board Committee Reports

Board Policy

Building, Sites & Transportation

Business & Finance

Curriculum, Americanism & Technology

Public & Personnel Relations

Strategic Planning

Discussion and Action Items

Consent Agenda

Motion to approve the Consent Agenda Passed with a motion by Bree Brown and a second by Mrs. Karen Borg.

Tim Bebee: Yea

Mrs. Karen
Borg: Yea

Bree Brown: Yea

Mr. Ben
Donner: Yea

Julie Rose: Yea

Mark Victor: Yea

Yea: 6, Nay: 0

Minutes of the previous meeting

Financial Reports

Discuss and take appropriate action on the 2015-2016 budget with consideration for the following funds: General, Depreciation, Employee Benefits, Contingency, Activities, Special Building, Bond, School Lunch, Qualified Capital Purchase, Cooperative and Student Fee Funds.

I move to adopt the 2015-2016 budget Passed with a motion by Bree Brown and a second by Mark Victor.

Tim Bebee: Yea

Mrs. Karen
Borg: Yea

Bree Brown: Yea

Mr. Ben
Donner: Yea

Julie Rose: Yea

Mark Victor: Yea

Yea: 6, Nay: 0

Discuss and take appropriate action on the district property tax request(s) for the 2015-2016 school fiscal year.

Move to adopt the new property tax request for the 2015 - 2016 year Passed with a motion by Mark Victor and a second by Mrs. Karen Borg.

Tim Bebee: Yea

Mrs. Karen
Borg: Yea

Bree Brown: Yea

Mr. Ben
Donner: Yea

Julie Rose: Yea

Mark Victor: Yea

Yea: 6, Nay: 0

Discuss and take appropriate action to recognize the Wakefield Education Association as the exclusive bargaining agent for the district's non-supervisory certificated staff for the 2017-2018 year.

move the board of education recognize the Wakefield Education Association as the exclusive bargaining agent for non-supervisory certificated staff for the 2017-18 contract year. Passed with a motion by Mr. Ben Donner and a second by Mark Victor.

Tim Bebee: Yea

Mrs. Karen
Borg: Yea

Bree Brown: Yea

Mr. Ben
Donner: Yea

Julie Rose: Yea

Mark Victor: Yea

Yea: 6, Nay: 0

Discuss proposed extra-curricular drug testing program for Wakefield High School.

Upcoming Dates and Times

Set the date and time for the next regular meeting

Adjournment

Motion to adjourn the meeting at 9:55pm Passed with a motion by Mrs. Karen Borg and a second by Mr. Ben Donner.

Tim Bebee: Yea

Mrs. Karen Borg: Yea

Bree Brown: Yea

Mr. Ben Donner: Yea

Julie Rose: Yea

Mark Victor: Yea

Yea: 6, Nay: 0

Elementary Principal Report

Board of Education

September 2015

- **Goal #1: Wakefield Community School will provide students an education that develops relationships utilizing a relevant curriculum that infuses technology providing 21st Century learning for all students.**
- We continue to modify the ELL program in order to make sure we are meeting the needs of all students. Mrs. Montoya has been working inclusively for most of the school day. She currently provides direct services to K-3 and newcomer students. 4th-6th grade students are working primarily with paraprofessionals. As of now, all students K-12 have been assessed using the Woodcock Munoz Language Survey to determine ELL eligibility. This assessment has been administered by Ms. Waterman, our school psychologist.
- During the first 2 weeks of school, Mrs. Manz benchmarked all students in grades 1-3 and any new students who moved into Wakefield. Mrs. Metzler is completing running records and benchmarks on all 4-6 students.
- The elementary school improvement goal is as follows:
 - Given appropriate reading instruction using our core curriculum, guided reading and multiple interventions, 80% of our students will be at or above grade level as measured by end of the year benchmarking.
 - Given appropriate math instruction using our core curriculum and interventions, 80% of students will use math vocabulary to solve word problems with 80% accuracy as measured by teacher documentation and performance on district assessments.
 - Given appropriate modeling and practice, Wakefield Elementary students will increase their sense of school pride as measured by staff observations.
- We have begun our first round of MAP assessments. Students in grades K-2 will take the test 3 times during the school year. Students in grades 4-6 will take the test 2 times this year.
- To support our school improvement goal of increasing school Pride, we have decided that we will plan and take part in 4 Trojan Pride activities a year.
- Teachers have been increasingly integrating technology into their classrooms. These are the activities that I have witnessed numerous times over the last few weeks of school: students creating Google Slides presentations on the 6 Traits of Writing, interactive assessments using Kahoot It, IXL practice using iPads or computers, Google Drive to use learn various Google applications, iMovies for book reports, Quiz Show (Science curriculum) to practice vocabulary terms.
- This year Mr. Heitz and I have integrated “Mission Monday” for both staff and students. This is a task that both students and staff are encouraged to accomplish over the course of a week. Tasks are designed to promote a positive climate and to support our Trojan Pride goal.
- Staff members will be working on curriculum development during our late start sessions. New English/Language Arts standards were adopted last year and this year mathematics standards will be adopted. Staff will work with their teaching partner to address new standards and align their curriculum.
- Two special education paraprofessionals have been hired to replace two openings that we had. Both of the individuals are doing a great job in classrooms both supporting students and teachers. Please welcome Leah Jech and Madison McAfee.
- We currently have 2 student teachers in the elementary building. One will be working in 2nd grade splitting time between Mr. Johnson and Mrs. Schlickbernd. The other is working with Mrs. Metzler and Mrs. Carroll through out the course of this semester.

- **Goal 3: Wakefield Community School will facilitate communication with staff, parents, patrons and students.**
- Be sure to “Like” our Facebook page. Mr. Heitz and I plan to use Facebook as another tool to communicate with parents. Facebook is frequently used by many of our district patrons. We are able to post various types of communication, events and pictures for our stakeholders to see.
- If you look at the fence on the Elementary playground, you will see the addition of “Trojan Pride.” This was made possible by donations from Helena and funds from the district. Community volunteers put up the words and will also add two Trojan Heads.

**Wakefield Community School
Board of Education
High School Principal Report
September 2015**

Goal #1: Wakefield Community School will provide students an education that develops relationships utilizing a relevant curriculum that infuses technology providing 21st Century learning for all students.

- Our SAT Team meet during the 2nd week of school to discuss our students who are currently in the SAT program. Many of them finished strong last semester, and we are monitoring them. After School Program is often our first step with SAT students if they begin to have failing grades.
- We decided to do Fall MAP testing (7-12) at the beginning of the 2nd quarter this year. This gives the students a chance to be more prepared, plus it will be after Homecoming, P/T Conferences, etc.
- During our opening meetings, we discussed “Thinking Strategies.” As a result of the Data Retreat input, we are no longer requiring “L to J” quizzes, but instead will work toward developing a common sets of thinking strategies that all teachers will use. I have also asked the teachers to video themselves teaching and to do a self-evaluation from the video.
- Our first late-start faculty meeting took place today. We spent the time re-learning about CANVAS. I also handed out books for this year’s book study: “It Happens in the Hallway.”
- For the student assembly on the first day of school, I mentioned “Thinking Skills” to them as well. We also briefly talked about “Mission Mondays” and I had each class set an Academic goal and a Pride goal for the year.

Goal #3: Wakefield Community School will facilitate communication with staff, parents, patrons and students.

- Parent/Teachers Conferences are coming up on October 1. During conferences, Mr. Wulf and I will be placing laptops out for parents to be able to fill out a climate survey.
- Current Enrollment, 2015-16 (as of Sep. 9):

Grade Level	Number
7 th grade	35
8 th grade	35
9 th grade	26
10 th grade	34
11 th grade	33
12 th grade	29
Total	192

**Wakefield Community School
Board of Education
High School Principal Report
September 2015**

Miscellaneous

Homecoming Week will be the week of September 21-25. The week's activities will include hall decorating, coronation, pep rally with the elementary, and the homecoming dance. The football game is at 3:00 on the 25th, so we will have a pep rally at approx. 12:30, with a 1:00 dismissal.

The One-Act this year will be "A Deep Poetic Journey into Something." There are over 30 students involved in one-act this year, including several that are needed as crew members.

College Readiness Letter for:
WAKEFIELD CMTY SD 90-0560

August 26, 2015
Code: 287186

SUPERINTENDENT
WAKEFIELD CMTY SD 90-0560
PO BOX 330
WAKEFIELD, NE 68784



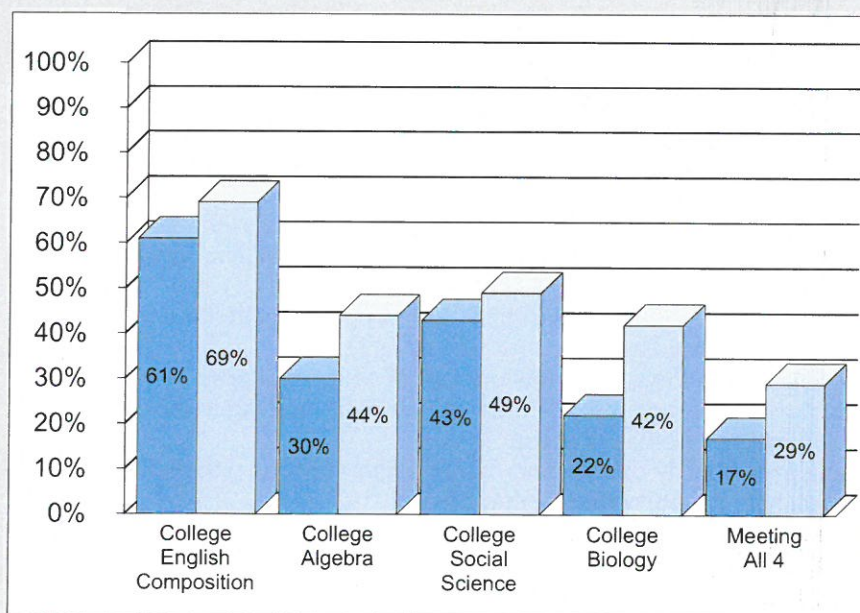
011062110

This report reflects the achievement of your graduates on the ACT over time and an indication of the extent to which they are prepared for college-level work. The ACT consists of curriculum-based tests of educational development in English, mathematics, reading, and science designed to measure the skills needed for success in first-year college coursework. Table 1 shows the five-year trend of your ACT-tested graduates. Beginning with the 2013 Graduating Class, all students whose scores are college reportable, both standard and extended time tests, are included in this report.

Table 1: Five Year Trends - Average ACT Scores

Grad Year	Total Tested		English		Mathematics		Reading		Science		Composite	
	District	State	District	State	District	State	District	State	District	State	District	State
2011	21	16,461	18.6	21.8	19.9	21.7	19.6	22.3	20.4	22.0	19.8	22.1
2012	21	16,581	19.2	21.8	20.9	21.7	20.0	22.3	20.0	21.9	20.2	22.0
2013	18	17,745	17.3	21.1	19.9	21.1	19.4	21.8	19.7	21.5	19.3	21.5
2014	17	17,768	17.7	21.3	19.1	21.1	18.1	22.0	19.0	21.7	18.6	21.7
2015	23	18,347	20.0	21.1	19.6	21.0	22.1	21.9	20.3	21.6	20.6	21.5

Figure 1. Percent of ACT-Tested Students Ready for College-Level Coursework



Are Your Students Ready for College?

Through collaborative research with postsecondary institutions nationwide, ACT has established the following as college readiness benchmark scores for designated college courses.

A benchmark score is the minimum score needed on an ACT subject-area test to indicate a 50% chance of obtaining a B or higher or about a 75% chance of obtaining a C or higher in the corresponding credit-bearing college courses.

- * English Composition: 18 on ACT English Test
- * College Algebra: 22 on ACT Mathematics Test
- * Social Science: 22 on ACT Reading Test
- * Biology: 23 on ACT Science Test

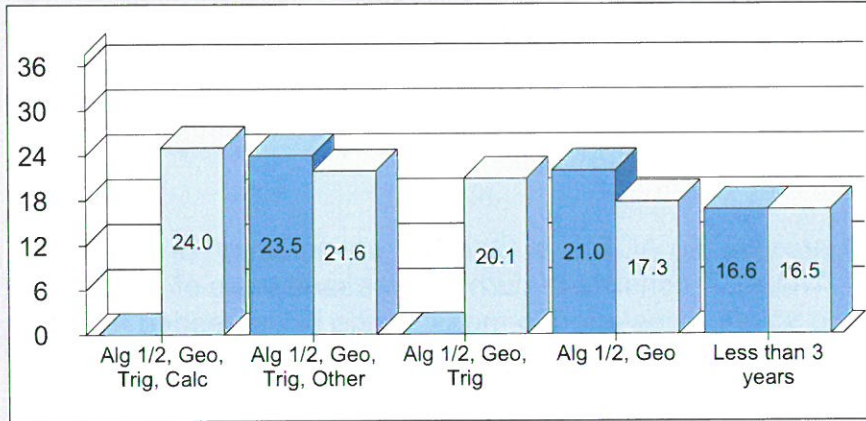
■ Your District
■ State

A High School College Readiness Letter has been sent to the Principal of each high school with at least one ACT-tested graduate.

College Readiness Letter for:
WAKEFIELD CMTY SD 90-0560

ACT Research has shown that it is the rigor of coursework - rather than simply the number of core courses - that has the greatest impact on ACT performance and college readiness. Figures 2 and 3 report the value added by increasingly rigorous coursework in mathematics and science respectively.

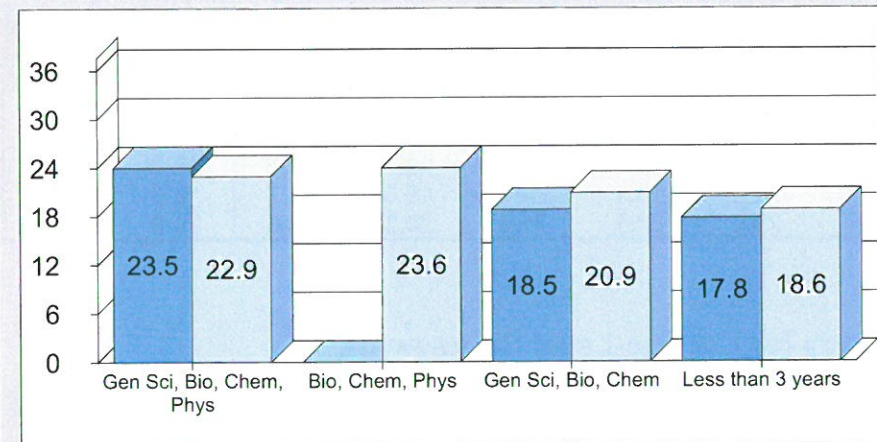
Figure 2. Average ACT Mathematics Scores by Course Sequence



Value Added by Mathematics Courses

Students who take Algebra 1, Algebra 2, and Geometry typically achieve higher ACT Mathematics scores than students who take less than three years of mathematics. In addition, students who take more advanced mathematics courses substantially increase their ACT Mathematics score.

Figure 3. Average ACT Science Scores by Course Sequence



Value Added by Science Courses

Students taking Biology and Chemistry in combination with Physics typically achieve higher ACT Science scores than students taking less than three years of science courses.

In order to ensure that all students are ready for college, an overview of vital action steps is provided.

College Readiness for All: An Action Plan for Schools and Districts

- 1. Create a Common Focus.** Establish collaborative partnerships with local and state postsecondary institutions to come to a shared understanding of what students need to know for college readiness. Use ACT's College Readiness Benchmarks as a common language to define readiness.
- 2. Establish High Expectations for All.** Create a school culture that identifies and communicates the need for all students to meet or exceed College Readiness Benchmark Scores.
- 3. Require a Rigorous Curriculum.** Review and evaluate the rigor and alignment of courses offered and required in your school in English, mathematics, and science to ensure that the foundational skills leading to readiness for college-level work are taught, reaffirmed, and articulated across courses.
- 4. Provide Student Counseling.** Engage all students in early college and career awareness, help them to set high aspirations, and ensure that they plan a rigorous high school coursework program.
- 5. Measure and Evaluate Progress.** Monitor and measure every student's progress early and often using college readiness assessments like ACT Aspire and the ACT. Make timely interventions with those students who are not making adequate progress in meeting College Readiness Benchmarks.

To learn more about these recommended action steps and ACT programs that will help improve college readiness for your students, contact ACT Customer Service at 319-337-1309 or customerservices@act.org.

ESU #1

ANNUAL REPORT

2014-15



Board



Council



Budget



Improvement



Development



Technology



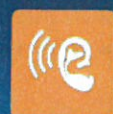
Tech Training



Materials



Media



Audiology



Speech



Deaf Ed



Psychology



PT/OT



Transition



Vision



Tower



ECSE



EDN



ILCD



Assistive Tech



ASD



BIRSST



Usher



www.esu1.org



ESU #1



Administrator



SPED Director



Core



SPED

Educational Service Unit #1



Bob Uhing

a note from the administrator

This annual report serves the following purposes:

- ▶ to meet legal requirements as set forth by state statute;
- ▶ to provide information about ESU #1 activities to area schools, our board of directors and the public;
- ▶ to provide a benchmark in our continuous improvement journey; and
- ▶ to provide data by which decisions can be made.

The Educational Service Unit #1 service area covers 2,926 square miles and includes 11,374 students and 1,162 teachers. Moreover, the ESU #1 service area includes three Native American reservations: the Santee, Winnebago and Omaha.

This annual report is an overview of the services provided by ESU #1. The service unit provides educational services to area schools as determined by the needs of individual school districts. ESU #1 maintains a staff of highly qualified individuals who provide efficient and effective educational services.

Local districts receive contracted special educational services and, in addition, each district receives assistance through core services, which include staff development, technology and media services.

By developing a partnership with each of our member districts, ESU #1 provides the educational programming and services necessary for area school districts to reach their goals of improving student learning and enhancing the capacity and skills of their staff. It is our intent to be sensitive to the requests of the 22 K-12 school districts in our service area and partner with them to meet changing needs through professional trainings, support and education.

Nebraska Department of Education (NDE) Rule 84 establishes a level of performance for ESU accreditation. The AdvancED accreditation of ESU #1 is based on a national research-based protocol for intermediate agencies and meets the highest standards of the Nebraska Department of Education.

School districts rely on ESU #1 staff as experts in the areas of special education, core services, grant activities and cooperative purchasing programs.

Within this report, you will learn about the efforts of our staff in assisting area public schools to make a difference in the lives of both students and educators.

On behalf of the ESU #1 Board of Directors, I thank you for taking the time to review this annual report. Should you have any questions, please do not hesitate to contact me.

Bob Uhing

Dr. Bob Uhing, Administrator



2014-15 Annual Report

about ESU #1



Educational Service Unit #1 provides services to the local school districts in Cedar, Dakota, Dixon, Knox, Thurston and Wayne counties in northeast Nebraska. ESU #1 is one of 17 Educational Service Units statewide.

The service units were created by the state Legislature in 1965 and later placed under the jurisdiction of the Nebraska Department of Education.

Historically, the purpose of the ESUs has been to provide services that individual school districts can't economically or efficiently provide for themselves. As the school districts identified new needs, the diversity of services offered by the ESUs evolved.

ESU #1 is headquartered in Wakefield and provides a variety of special education, staff development, technology and media services to the 22 school districts in its six-county area. ESU #1 also operates the Level III program at the Tower School in Wayne.



board of directors



ESU #1 Board of Directors members are elected to four-year terms, one representative from each of the 11 election districts.

The board meets in regular session on the second Tuesday of each month at the Central Office in Wakefield. Current board members are:



Dave Dowling Fred Boelter Ron Wenstrand



Sally Reinert Helen Sorensen Rodney Garwood



Rhonda Heise Joy Bock Jeff Messersmith



Thomas Luxford Adrian Johnson

- ▶ Dave Dowling, chairman (Hartington)
- ▶ Fred Boelter, vice-chairman (Creighton)
- ▶ Ron Wenstrand, secretary (Wakefield)
- ▶ Sally Reinert (Dakota City)
- ▶ Helen Sorensen (South Sioux City)
- ▶ Rodney Garwood (Wayne)
- ▶ Rhonda Heise (Pender)
- ▶ Joy Bock (Allen)
- ▶ Jeff Messersmith (Wynot)
- ▶ Thomas Luxford (South Sioux City)
- ▶ Adrian (AJ) Johnson (Hartington)

Educational Service Unit #1



Council

advisory council

ESU #1 is accredited by the Nebraska Department of Education and is assisted by an advisory council composed of area superintendents representing both the large and small schools within the ESU #1 service area.

The council reviews, recommends and supports the services offered by ESU #1. Current advisory council members are:

- ▶ Vern Fisher, president (South Sioux City)
- ▶ Mark Bejot (Wakefield)
- ▶ Joan Reznicek (Ponca)
- ▶ Joey Lefdal (Santee)
- ▶ Randy Klooz (Laurel-Coleridge)
- ▶ Jason Dolliver (Pender)



Vern Fisher



Mark Bejot



Joan Reznicek



Joey Lefdal



Randy Klooz



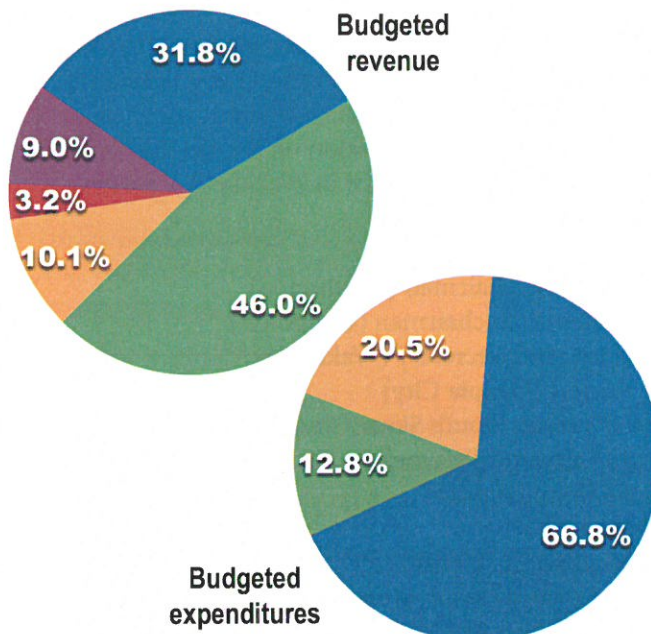
Jason Dolliver



Budget

budget

Each ESU is financed through a combination of property tax funds, state funds and service contracts with individual school districts. Because the ESU #1 service area includes several counties, the modest contribution by taxpayers provides a base from which the unit functions.



Budgeted revenue

- ▶ General fund/carryover... \$4,500,000
- ▶ Local receipts \$6,511,700
- ▶ Property tax..... \$1,424,970
- ▶ State receipts..... \$454,696
- ▶ Federal funds \$1,275,000

TOTAL \$14,166,366

Budgeted expenditures

- ▶ Local \$9,457,216
- ▶ State/federal/local \$1,809,150
- ▶ Cash reserve..... \$2,900,000

TOTAL..... \$14,166,366

2014-15 Annual Report

agency improvement process



Our mission: Proving innovation, leadership and service

ESU #1 became nationally accredited with AdvancED in October 2011. The agency improvement process continues as the Fall 2016 accreditation external review nears.

On the first Friday of each month, the ESU #1 Agency Improvement Team meets. The team consists of administration, staff developers and the communication/technology specialist. This team provides guidance, leadership and facilitation to keep continuous improvement activities moving forward.



During the monthly meetings, the team reviews ESU, district and other stakeholder data, organizes all-staff days and annual data-retreat activities, and completes AdvancED requirements through ASSIST, AdvancED's online evidence and support tool.

All ESU #1 employees support the continuous improvement process through annual goal-setting, department goal-setting, participation in all-staff days and data-retreat activities, as well as the completion of AdvancED stakeholder surveys.

Our vision — *ESU #1 will model excellence by helping schools increase educators' effectiveness and student learning as a result of expert services* — and our mission — *Providing innovation, leadership and service* — guide our continuous improvement efforts and help keep our focus on the needs of our partner districts.

special education services



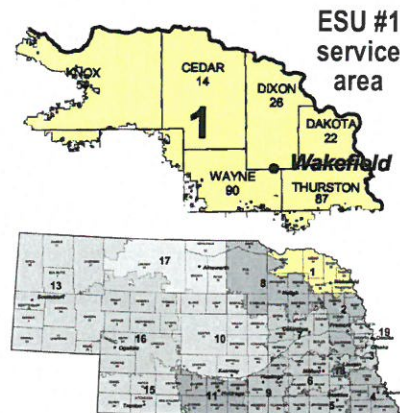
Implementing an early intervention approach

ESU #1 is bringing early childhood services into alignment with what research has shown to be best practices. Specifically, we are adopting a new way to get information from parents by:

- ▶ using the Routines Based Interview (RBI) process;
- ▶ implementing a new way to write goals for Individualized Education Programs (IEPs) and Individual Family Service Plans (IFSPs) by focusing on child and family outcomes; and
- ▶ utilizing a Primary Service Provider (PSP) or coaching approach to service delivery.

These changes are a perfect fit with the Nebraska Department of Education's plan to address the federal initiative, Results Driven Accountability (RDA). RDA is intended to close the achievement gap between students with disabilities and their non-disabled peers.

As a result of the changes we are implementing, ESU #1 has been selected as one of three pilots for the NDE plan to address RDA for early childhood.



Educational Service Unit #1



Core

core services

ESU #1 core services includes staff development, technology and instructional media. Core services provide the following:

- ▶ instructional training for administrators and teachers to ensure student learning and success;
- ▶ technology training and support for districts, administrators and teachers; and
- ▶ the provision of ancillary resources through the media center.



Rhonda Jindra



Amy Hill



Jim Hopkins



Chris Good



Kellen Conroy



Scott McIntosh

Staff development



Development

Staff developers have made a concerted effort to assist districts on-site in local school buildings. Staff developer support reached more than 655 teachers and administrators during 44 on-site visits during the 2014-15 school year. The 184 workshops and trainings sponsored by ESU #1 reached more than 3,580 participants.

- ▶ NWEA MAP (Measures of Academic Progress) — MAP assessments are used by ESU #1-area schools up to three times a year to measure growth in reading, language, math and science. Teachers analyze class and student data to set goals, differentiate instruction and prepare students for NeSA testing.
- ▶ Principal Instructional Leadership Series — The June 2014 Principal Leadership and Instructional Coaching Trainer of Trainers (TOT) was facilitated by Phil Warrick of Marzano Research Associates. The series focused on instructional leadership and coaching. Content learned during the two-day training session was incorporated into the 2014-15 August and January principal meetings.
- ▶ BYOC (Build Your Own Curriculum) — BYOC is in its second year of implementation. The online program helps schools organize and align their curriculum to state and national standards. Sixteen schools are currently using BYOC, with three more districts coming on in 2015-16.
- ▶ ALL (Adolescent Literacy Learning) — ALL is a multi-year project with schools in ESUs #1, 7 and 17. Teams of teachers in grades 4 through 12 and an administrator attend training on student engagement, vocabulary, comprehension and writing. Staff developers observe classroom lessons throughout the year and debrief individual teachers on strategies they are using from the training.
- ▶ ESO (Elementary Science Olympiad) — The first ESO made its debut to ESU #1-area schools in 2014-15. ESU #1's partnership with Wayne State College on Elementary Science Olympiad provided area teachers, students and schools an opportunity for hands-on learning and exploration in science and math.
- ▶ John Baylor — For the first time, all ESU #1-area districts participated in the John Baylor Prep (JBP) during 2014-15. JBP is an online resource that prepares juniors and seniors for the ACT. All participating districts have access to mini-training sessions that can be utilized in their respective content areas and/or in a strategic ACT preparation training session. Data submitted to the ESU demonstrates the positive results of using JBP for ACT preparation.



Core

Technology infrastructure



Technology

In 2014-15, the computer technologist received more than 8,800 emails and sent more than 3,100 responses. The need for high-bandwidth connections continues to grow, with more schools going 1-to-1. The Northeast Nebraska Network Consortium (NNNC) peak bandwidth was over two gigabits this year, with the capacity for three gigabits bandwidth to the Internet.

This year, the ESU administrators, in cooperation with NDE, introduced three technology initiatives: data, BlendEd and teacher/principal evaluations. The Technology Department at ESU #1 has been working diligently to support those initiatives by:

- ▶ collecting data and helping districts connect to and interpret that data, as well as providing guidance on educational decisions;
- ▶ updating distance-learning carts in many of the districts across ESU #1, with Canvas as our learning management system, and encouraging schools to participate in virtual field trips and to share classes via distance learning; and
- ▶ leading the way in teacher/principal evaluations, designing and using an instrument to assist in the process.

Technology training



Tech Training

The technology trainer assists students, teachers, support staff and administrators by providing instruction in the areas of technology, tech integration and instructional materials.

During the 2014-15 school year, the technology trainer assisted nine teachers with the piloting of Canvas. Canvas will be the new Learning Management System (LMS) for ESU #1 schools beginning in the 2015-16 school year. Other technology projects facilitated by the technology trainer included working with the Carl Perkins BlendIT1 project, Google Apps for Education trainings and the Clarity BrightBytes implementation and data analysis.

The annual NNNC Summer Technology Institute — a Northeast Nebraska Network Consortium collaboration that includes school districts in ESUs #1, 2, 7, 8 and 17 — was a huge success. Approximately 300 teachers and administrators attended the two-day event in May 2015.

Instructional materials



Materials

ESU #1 provides a variety of instructional materials to schools in northeast Nebraska. As a participant in IMat (Nebraska's instructional materials affiliate group), ESU #1 secures digital rights to instructional video titles and services to benefit students. Other services include access to online content such as Learn360, World Book Online and Visual Thesaurus.

Media center



Media

The ESU #1 Media Center provides instructional assistance for school districts in Cedar, Dakota, Dixon, Knox, Thurston and Wayne counties by supplying professional development resources, materials, programs, polycom access, assistive technology and inventory distribution. The media center also completes individual orders for duplication, binding, laminating and die cuts for administrators, teachers and staff.

Educational Service Unit #1



special education services

ESU #1 Special Education staff are committed to meeting the diverse needs of the families, students and schools in our service area. Our expert service is focused on increasing student achievement through collaborative problem solving and relationship building. It is a privilege to serve the districts and families in the ESU #1 service area.

Program supervision



The primary function of the Special Education Director is to recruit qualified personnel to fulfill the requirements of contracting districts in addition to the assignment, supervision and support of staff. A secondary function is to provide consultation to area districts on areas that include budget assistance, student placement, federal and state mandates and other related issues.

Audiology



The ESU #1 Audiology Department, consisting of one full-time certified/licensed audiologist and assisted by the speech/language pathologists, serves children with audiological screening, testing and follow-ups in their homes, schools and in a soundproof testing suite at the Wakefield office.

More than 15,000 screenings and follow-up tests were completed during the 2014-15 school year. In addition, the ESU #1 audiologist serves all of the students involved in the deaf education program in northeast Nebraska.

Speech/language



Focusing on a team approach, ESU #1 speech/language pathologists work with other specialists to provide: assessment and intervention to students from birth to 21 years of age; and services in areas that adversely affect student's education such as articulation, language, phonology, apraxia, voice, fluency, literacy readiness, hearing, social skills, autism and traumatic brain injuries.

The pathologists also participate in providing hearing screenings to all students in ESU #1 districts and in making sure direct and consultative services are provided in schools, homes and centers. They work as a team with local school districts, as well as other specialists.

The pathologists attend advanced trainings and share information through department meetings, as well as advocate for families and children with speech, language and hearing disorders. In 2014-15, the ESU #1 speech/language pathologists served 1,037 students in 27 school districts.

Deaf education



The ESU #1 Deaf Education Program provides direct and consultative services to students from birth to 21 years of age who have verified hearing loss. The program offers in-services to staff; provides input at Individual Education Program (IEP), Multidisciplinary Team (MDT) and Student Assistance Team (SAT) meetings; assists schools with equipment needs for deaf and hard-of-hearing students; and advocates for families and children who have hearing loss.

During the 2014-15 school year, the ESU #1 Deaf Education Program served 36 children from 15 school districts.

2014-15 Annual Report

special education services



School psychology



Psychology

The ESU #1 School Psychology Program provides services in consultation, assessment and intervention to assist educators, parents and other professionals in understanding the learning, social-emotional and behavioral needs of students, and in identifying effective strategies to help children be successful learners.

During the 2014-15 school year, ESU #1 school psychologists conducted over 600 academic and behavioral evaluations, provided individual and group counseling sessions to approximately 200 children and adolescents, completed nearly 100 behavioral intervention plans and/or functional behavioral assessments, and collected data on over 3,500 students in the area of reading fluency, reading comprehension and math to help guide instructional decisions and changes.

In addition, ESU #1 psychologists continue to implement forward-thinking programs, including Response to Intervention (RtI) and Improving Learning for Children with Disabilities (ILCD).

Physical and occupational therapy



PT/OT

Within the Physical and Occupational Therapy Department, two physical therapists and five occupational therapists served 450 students and their families and completed 95 evaluations during the 2014-15 school year. Through consultations with students and their families, as well as school personnel, therapists work to enhance learning and participation, achieve physical milestones and to foster independence.

Transition



Transition

The ESU#1 Transition Program is designed to help students with disabilities bridge the gap between school experiences and adult life, and helps students function as productively and independently as possible within an integrated adult environment.

Transition-age students are those who are 16 or older. More than 145 students were provided transition services during the 2014-15 school year. Interest and aptitude testing, job shadows, internships and information about college programs and Job Corp are some of the experiences students may receive during the transition process. The goal is to assist students in finding a realistic career that fits with their interests, preferences and strengths. The question, "What do you want to be when you grow up?" becomes easier to answer with the assistance of ESU #1's Transition Program.

Visual/orientation and mobility services



Vision

The ESU #1 Vision Program provides individualized learning environments, working to meet the unique and individual needs of students with verified visual impairments.

Services provided included direct teaching in the areas of braille instruction, orientation and mobility, technology access, low vision adaptations, visual efficiency skills and the use of magnification devices, as well as services in areas of the expanded core curriculum for the blind and visually impaired. Consultation, material preparation/adaptation, braille textbook sourcing, functional vision evaluations and orientation and mobility evaluations were also provided.

During the 2014-15 school year, one dual-certified teacher of students with visual impairments/orientation and mobility specialist served or evaluated 28 students in 12 different school districts in the six-county ESU #1 service area, as well as one student from the ESU #2 service area and four students from the ESU #8 service area.

Educational Service Unit #1



SPED

special education services

Tower School Level III Program



Tower

Tower School in Wayne, Nebraska, was built during the fiscal year of 1992-93 and provides contracted services to school districts in an alternative setting. The Tower School program consists of two specialized classrooms with students placed in classrooms based on individual needs.

The services Tower School provides focus on behavior modification, social skills, functional skills, daily living skills, job skills, transition skills and ultimately prepares students to be contributing members of society and experience success in a variety of settings.

During the 2014-15 school year, three certified teachers, along with other itinerant service providers and paraeducators, served a total of 43 students from 15 area school districts.



Early Childhood (ECSE) and Early Development Network (EDN)



ECSE



EDN

The Early Childhood Special Education Program works to provide appropriate comprehensive services to all children who are referred, ages birth to 5, and are verified as behaviorally disordered, deaf, developmentally delayed, hearing impaired, learning disabled, mentally handicapped, multi-handicapped, orthopedically impaired, speech/language impaired, visually handicapped or children with other health impairments.

The program evaluates children, coordinates necessary services and assists parents in meeting the needs of children with a variety of disabilities.

The Early Development Network strives to help families of children below age 3 with special needs understand their child's disability and provide assistance in dealing with situations that interfere with the child's development; find services to meet developmental, educational, financial, health care, child care, respite care and other needs; work with multiple providers to make sure services are provided as needed; and become coordinators of services for their own children in the future.

During 2014-15, the ECSE program was composed of 10 special education teachers, including the coordinator. The EDN included four service coordinators and one supervisor. Both departments served 282 children by providing evaluations, consultations or direct services. Of the children served, 138 were 3 years old or under.

ECSE and EDN also assisted with nine early childhood screenings, kindergarten roundups, teacher trainings, pre-service presentations at local colleges, community nights, school registration nights and pre-natal/post-natal health fairs.

special education services



SPED

Improving Learning for Children with Disabilities (ILCD) Facilitator



ILCD

The NDE Office of Special Education has implemented a revised, federally required accountability system known as Results Driven Accountability (RDA). The goal of RDA is to improve educational results, enhance functional outcomes and demonstrate growth over time for children with disabilities. According to 92 NAC 51 004.13, ILCD is a required process to ensure the achievement of RDA outcomes.

Nebraska's ILCD process was adjusted to reflect the RDA initiative. During the 2014-15 school year, ESU #1's ILCD facilitator communicated these changes, initiated data analysis activities and assisted with the creation of multiyear Targeted Improvement Plans (TIP) for 22 districts. Ongoing support will be offered as districts refine, implement and evaluate the effectiveness of the TIP and progress toward improving results for children with disabilities.

Assistive Technology Team



Assistive Tech

Assistive technology can include "high tech" tools such as switches, switch adapted toys, computer software, adaptive equipment and dedicated voice output communication aids or "low tech" tools like adapted books. The ESU #1 Assistive Technology Team aids districts in the determination of a student's need for services, including evaluations, consultations and short-term equipment loans.

During the 2014-15 school year, the ESU #1 Assistive Technology Team provided technology related consultation to seven students in five different school districts.

Autism Spectrum Disorder (ASD) Team



ASD

Autism is a behaviorally defined disorder that is generally recognized by disturbances in communication, social interaction and perceptual organization or patterns of behavior. Diagnosed individuals may exhibit a variety of symptoms, ranging from mild to severe, and may display a wide range of skills and deficits.

ESU #1's ASD Team served over five schools during the 2014-15 school year. Additionally, the ADOS-2 (Autism Diagnostic Observation Schedule, Second Edition) team traveled to five school districts to assess nine students, and the South Sioux City ADOS-2 team administered seven ADOS-2 evaluations.

Brain Injury Regional School Support Team (BIRSST)



BIRSST

The Brain Injury Regional School Support Team (BIRSST) includes speech/language pathologists, psychologists, nurses, teachers and coaches. The team consults with school staff when a child sustains a head injury; trains staff on concussion management; and educates staff on head injuries and their impact on educational performance.

During the 2014-15 school year, BIRSST consulted with seven schools and gave seven presentations on concussion management and the Return to Learn plan.

Usher Syndrome Team



Usher

Usher syndrome is an inherited condition that affects both hearing and vision. Currently, there is no cure, which makes early identification paramount in providing appropriate educational programs. The main purpose of the team is to screen those children and youths who are hearing impaired and who fit the profile for Usher's for visual acuity difficulties.



Educational Service Unit #1

2014-15

211 Tenth Street
Wakefield, NE 68784

Phone: (402) 287-2061 Fax: (402) 287-2065

Superintendent's Report

September 14, 2015

1. **Goal #1:** Wakefield Community School will provide students an education that develops relationships utilizing a relevant curriculum that infuses technology providing 21st Century learning for all students. (Curriculum, Americanism & Technology)
 - a. ACT scores are in for Wakefield Community High School and I am pleased to say that 23 students took the exam last year. Our English score improved from 17.7 to 20.0 with the state average of 21.1. Mathematics improved from 19.1 FY 2014 to 19.6 for 2015 with the state average score of 21.0. Reading improved from 18.1 FY 2014 to 22.1 last year with the state average of 21.9. This is the first time in five years that Wakefield exceeded the state average in reading. Science scores also improved FY 2014 the score was 19.0 and last year the students scored 20.3 with the state average of 21.6. The composite score which take into account all four areas of testing improved from 18.6 in 2014 to 20.6 in 2015 with a state average of 21.5. I have attached a copy of the ACT results for your review.

I like seeing the improved scores and believe the John Baylor Test Preparation is making an impact on our scores. Examining math sequence scores revealed that students taking Algebra ½, Geometry, Trig and other are exceeding the state as well as students completing an Algebra ½ and Geometry sequence. Our students exceeded the state average in science having taken a general science, Biology, Chemistry and Physics sequence.

- b. I have attached ESU #1's Annual Report for 2014-2015 for your review. The goal of Educational Service Units is to provide services that individual school districts can't economically or efficiently provide for themselves. ESU #1 serves 22 school districts in Cedar, Dakota, Dixon, Knox, Thurston and Wayne counties. Our local ESU #1 board of director is Mr. Ron Wenstrand. He currently serves as secretary for the Board of Directors.

Our ESU #1 services that Wakefield utilizes are: special education services, AdvancED, staff development, technology infrastructure (bandwidth purchasing), technology training & assistance, media center, curriculum assistance. ESU #1 is financed through a combination of property tax funds, state funds and service contracts for individual services like our school psychologist and speech therapy.

2. Goal #2: Wakefield Community School will make an efficient use of all resources.
(Business & Finance)

- a. Currently the school district is 1.53% under budget for the month of September. This figure is based upon the proposed 2015-2016 budget document.
- b. Athletic Training needs will now occur through Providence Medical Center – Wayne. The new trainers that will be serving the district are Tim Ellis and Andrea Blecke. The two trainers will provide coverage at home football games as well as our wrestling invitational meet in February. Weekly student visits at school are planned for Tuesday’s providing students are needing to see the trainer. We are excited to have Providence Medical Center meet our training needs.

3. Goal #3: Wakefield Community School will facilitate communication with staff, parents, patrons, and students (Public and Personnel Relations)

- a. The one-act play has been granted permission to practice on Sunday evenings from 6:00 – 8:00 pm. The group has experienced difficulty finding a time to meet without conflicts by other activities during the week. Time is needed when everyone is available to practice. Mrs. Borg and Mrs. Kluthe sent letters home to parents regarding the team’s request and approval to meet on Sunday evenings.

4. Miscellaneous

- a. 2015 School Board Retreat is planned for Saturday, September 26, 2015 at Educational Service Unit #1. The retreat will begin at 8:00 a.m. and conclude at 11:00 a.m., to allow the Husker Faithful to view the game against Southern Mississippi.
- b. Potential nights for a school community meeting to discuss the random drug testing policy are Wednesday, October 7th or Thursday, October 8th. October 8th has a varsity volleyball game at LHNE.

**WAKEFIELD COMMUNITY SCHOOL
PUBLIC HEARING MINUTES
AUGUST 11, 2015**

Two special board meetings of the Wakefield Community School Board of Education were held on August 11, 2015 prior to regular monthly meeting. The purpose of the first hearing was the annual review of Policy 5018 and Policy 5057 Parent Involvement in the Title 1 Program. Policy Parental Involvement In Education Practices policy involves parent's right to have access to review district-approved textbooks, curricular materials and testing used within the district. Policy 5018 allows parents to attend and observe courses, assemblies, counseling sessions and other educational activities. Parents have the right to request that their children be excused from testing, classroom instruction, surveys and other school experiences that parents find objectionable. Parental involvement assures that parents have access to view student records. Provided information regarding criterion referenced testing from the building principal. Finally parents are to be informed when student surveys occur and are allowed the right to have their son/daughter opt out of the surveys.

Parental Involvement in Title 1 Program affords parents participation in the development of the Student, Parent, and Teacher Compact, review and provide recommendations of changes in the Title 1 Program. A parent meeting was held on August 10th at the school library where the Title 1 School-wide plan was explained and questions and recommendations were received by the school administration.

President Bebee called the meeting to order at 7:00 pm with the following members present: Bebee, Borg, Brown, Donner, Rose, and Victor. Absent: None. Also present were Superintendent Bejot, Secondary Principal Heitz, Elementary Principal Wulf and recording secretary Gothier.

President Bebee opened the hearing to hear support, opposition, criticism, suggestions or observations from district patrons relating to Policy 5018.

At 7:05 pm the second hearing to review Policy 5057 - Student Fees was called to order. The student fee policy has only minor changes from last year. The FFA fees increased from \$25 to \$30 for membership fees. The second changes is in section 11, Charges for Food Consumed by Students the elementary lunch price increased from \$1.90 by five cents to \$1.95. The cost for an extra carton of milk is the same at 30 cents. Otherwise the Student Fee policy is unchanged.

The hearing is an opportunity for parents, patrons and the community to comment to the board regarding student fees.

President Bebee opened the hearing to hear support, opposition, criticism, suggestions or observations from district patrons relating to Policy 5057

Motion Passed: To adjourn the meeting at 7:13 pm passed with a motion by Rose and a second by Donner.

Yes: Bebee, Borg, Brown, Donner, Rose, Victor

No: None

Julie Rose
Secretary

Becky Gothier
Recording Secretary

**WAKEFIELD COMMUNITY SCHOOL
BOARD MINUTES
August 11, 2015**

The Board of Education Regular Meeting convened in open and public session on August 11, 2015 at 7:16 PM in the Boardroom at the Wakefield Community Schools, 802 Highland Street, Wakefield, NE.

President Bebee informed the group of the Open Meetings Act posted in the boardroom and accessible to all members of the public as required by law. All board members had received notice of the meeting and the meeting notice had been published/posted in a timely manner prior to the meeting date.

Attendance Taken at 7:16 PM

Present Board Members: Tim Bebee, Karen Borg, Bree Brown, Ben Donner, Julie Rose and Mark Victor

Absent Board Members: None

Also in attendance: Superintendent Bejot, Elementary Principal Wulf, Secondary Principal Heitz and Recording Secretary Gothier.

Approval of Agenda

Motion Passed: To approve the agenda passed with a motion by Donner and a second by Borg.

Yes: Bebee, Borg, Brown, Donner, Rose, Victor

No: None

Reports

Superintendent Report

Our current property and liability insurance carrier, Columbia Insurance, is discontinuing offering insurance for smaller C and D sized schools. We will be switching to Employers Mutual Casualty Company in Omaha. The new football uniforms arrived earlier in the week. The team is excited with the new uniforms and helmets. Trane Corporation is coming to look at leaking drip pans in seven cooling units in elementary classrooms. The building and grounds area is looking nice for the opening Flag Ceremony and beginning of school.

Discussion and Action Items

Consent Agenda

Motion Passed: To approve the Consent Agenda passed with a motion by Victor and a second by Donner.

Yes: Bebee, Borg, Brown, Donner, Rose, Victor

No: None

Bills were approved as follow: General: \$227,644.70; Lunch: \$6,455.97; Payroll: \$136,089.47; Depreciation: \$2,684.40; Employee Benefit: \$252.00.

Discuss and take appropriate action on student fee policy 5045

Motion Passed: To adopt the student fee policy 5045 for the 2015-2016 school year passed with a motion by Donner and a second by Rose.

Yes: Bebee, Borg, Brown, Donner, Rose, Victor

No: None

Discuss and take appropriate action to review and affirm Policy 5018 Parent Involvement In Education Practices.

Motion Passed: To reaffirm Policy 5018 Parent Involvement in Educational Practices passed with a motion by Borg and a second by Victor.

Yes: Bebee, Borg, Brown, Donner, Rose, Victor

No: None

Discuss and take appropriate action to review, revise or reaffirm Policy 5057 Parental Involvement in the Title 1 Program

Motion Passed: To reaffirm Policy 5057 Parental Involvement in the Title 1 Program passed with a motion by Victor and a second by Donner.

Yes: Bebee, Borg, Brown, Donner, Rose, Victor

No: None

Discuss and take appropriate action to review and affirm policy 5054 Student Bullying.

Motion Passed: To approve the review and reaffirm Policy 5054 Student Bullying passed with a motion by Donner and a second by Brown.

Yes: Bebee, Borg, Brown, Donner, Rose, Victor

No: None

Discuss and take appropriate action to reaffirm Policy 5001 Compulsory Attendance and Excessive Absenteeism

Motion Passed: To reaffirm Policy 5001 Compulsory Attendance and Excessive Absenteeism policy passed with a motion by Borg and a second by Brown.

Yes: Bebee, Borg, Brown, Donner, Rose, Victor

No: None

Discuss and take appropriate action to approve Mr. Joe Walsh and Mr. Garek Bebee as volunteer football coaches for the 2015-2016 season.

Motion Passed: To approve Joe Walsh and Garek Bebee as volunteer football coaches for 2015-16 passed with a motion by Brown and a second by Donner.

Yes: Borg, Brown, Donner, Rose, Victor

No: None

Abstain: Bebee

Discuss and take appropriate action to approve property and liability insurance from Northeast Nebraska Insurance Company.

Motion Passed: To purchase property and liability insurance from Employers Mutual Insurance passed with a motion by Victor and a second by Borg.

Yes: Bebee, Borg, Brown, Donner, Rose, Victor

No: None

Discuss and take appropriate action on a revised activity fund budget.

Motion Passed: To approve the revised 2015-2016 activities fund budget passed with a motion by Brown and a second by Donner.

Yes: Bebee, Borg, Brown, Donner, Rose, Victor

No: None

Discuss and take appropriate action to purchase iPad 2 Aire and covers from Apple Computer

Motion Passed: To purchase iPad II Aire's and covers from Apple Computer at a cost of \$14,857.50 passed with a motion by Rose and a second by Borg.

Yes: Bebee, Borg, Brown, Donner, Rose, Victor

No: None

Discuss and take appropriate action for the review and approve the payment of bills received after the board meeting on or before August 31, 2015 by the Business and Finance Committee.

Motion Passed: To approve the Business and Finance Committee to review and approve the payment of bills received after the board meeting on or before August 31, 2015 passed with a motion by Borg and a second by Rose.

Yes: Bebee, Borg, Brown, Donner, Rose, Victor

No: None

Discuss and take appropriate action on the transfer of funds to the Depreciation Fund.

Motion Passed: To allow the transfer of funds into the depreciation fund on or before August 31, 2015 passed with a motion by Brown and a second by Borg.

Yes: Bebee, Borg, Brown, Donner, Rose, Victor

No: None

Discuss and take appropriate action to declare surplus property. Donate surplus desks and chairs to Orphan Grain Train.

Motion Passed: To declare 100 elementary classroom chairs and 60 student desks as surplus property. passed with a motion by Victor and a second by Donner.

Yes: Bebee, Borg, Brown, Donner, Rose, Victor

No: None

Upcoming Dates and Times

The Business and Finance Committee will meet Wednesday, August 26 at 6:00 to review bills and proposed budget.

Set the date and time for the next regular meeting

The next regular board meeting will be Monday, September 14, 2015 at 7:00pm.

Adjournment

Motion Passed: To adjourn the meeting at 8:48 pm passed with a motion by Rose and a second by Borg.

Yes: Bebee, Borg, Brown, Donner, Rose, Victor

No: None

Julie Rose, Secretary

Becky Gothier, Recording Secretary

ALL Data

Cash Summary Report

Arranged by:
Fund ID

Date Range: 08/01/2015 thru 08/31/2015

Fund	Beginning	Revenue	Expenditures	Other	Ending	Encumbrances	Payables	Unencumbered
1	GENERAL FUND							
	1,335,759.39	41,919.15	-719,940.07	0.00	657,738.47	0.00	0.00	657,738.47
2	LUNCH FUND							
	80,987.34	14,584.92	-16,092.27	0.00	79,479.99	0.00	0.00	79,479.99
3	BOND FUND							
	61,683.22	589.66	0.00	0.00	62,272.88	0.00	0.00	62,272.88
4	COOPERATIVE FUND							
	0.00	0.00	0.00	0.00	0.00	0.00	0.00	0.00
5	DEPRECIATION FUND							
	227,430.56	250,019.50	-2,515.88	0.00	474,934.18	0.00	0.00	474,934.18
6	EMPLOYEE BENEFIT FUND							
	18,515.87	0.31	-252.00	0.00	18,264.18	0.00	0.00	18,264.18
7	SPECIAL BUILDING FUND							
	470,681.14	923.49	0.00	0.00	471,604.63	0.00	0.00	471,604.63
8	QUALIFIED CAPITAL PURPOSE UNDE							
	83,624.57	1,349.28	0.00	0.00	84,973.85	0.00	0.00	84,973.85
9	Interim							
	3,052.17	5,544.50	-3,443.60	0.00	5,153.07	0.00	0.00	5,153.07
Report Totals:	2,281,734.26	314,930.81	-742,243.82	0.00	1,854,421.25	0.00	0.00	1,854,421.25

BUDGET REPORT
August 31, 2015

		Annual Budget	Monthly Expense	YTD	Budget Balance	Percent Remain
1100	General Ed	2,456,829.00	218,640.19	2,415,914.98	40,914.02	1.67%
1125	Flex Funding	39,446.00	570.98	40,334.64	(888.64)	-2.25%
1150	LEP Plan	106,832.00	8,444.53	100,916.15	5,915.85	5.54%
1160	Poverty Plan	203,639.00	11,587.91	206,374.78	(2,735.78)	-1.34%
1180	Technology	188,003.00	11,454.96	157,100.30	30,902.70	16.44%
1190	Pre-School	60,000.00	407.77	51,460.64	8,539.36	14.23%
1200/90	Special Education	819,023.00	29,233.10	809,930.21	9,092.79	1.11%
2100	Guid/Support Services	167,119.00	23,559.05	159,675.61	7,443.39	4.45%
2212/22	Staff Dev/Media Center	109,029.00	12,559.03	105,114.32	3,914.68	3.59%
2310	Board of Ed	86,175.00	13,123.29	52,825.27	33,349.73	38.70%
2320	Superintendent	148,871.00	13,953.52	147,736.94	1,134.06	0.76%
2400	Principal	278,267.00	23,852.95	275,059.24	3,207.76	1.15%
2510	Business	124,051.00	6,990.32	117,225.73	6,825.27	5.50%
2600	Plant Oper/Maint	478,178.00	66,995.68	408,382.81	69,795.19	14.60%
2750/60	Transportation	181,147.00	20,084.74	157,746.90	23,400.10	12.92%
3135	High Ability Grant	6,200.00	604.73	7,239.38	(1,039.38)	-16.76%
4200	Title I Part A	90,821.00	7,470.73	90,562.63	258.37	0.28%
4310	Title II Part A	17,584.00	0.00	15,845.48	1,738.52	9.89%
4400	ECSE/IDEA	91,920.00	0.00	94,049.00	(2,129.00)	-2.32%
4915	Title I Part C - Migrant	38,810.00	115.88	38,666.28	143.72	0.37%
4925	Title III - Limited English	5,833.00	0.00	5,936.00	(103.00)	-1.77%
4992	REAP Grant	27,285.00	0.00	27,285.00	0.00	0.00%
6000	Summer School	5,341.00	290.71	4,857.98	483.02	9.04%
8000	Transfers	37,969.00	250,000.00	268,000.00	(230,031.00)	-605.84%
TOTAL		5,768,372.00	719,940.07	5,758,240.27	10,131.73	0.18%
PREVIOUS YEAR		5,664,083.00	371,057.32	5,276,314.87	387,768.13	6.85%

GENERAL FUND - #195103
TREASURER'S REPORT AS OF AUGUST 31, 2015

BALANCE AS OF AUGUST 1, 2015 **\$1,335,759.39**

REVENUE

WCS-General - Limited Computer Use	45.00	
WHCC - Hoffman health ins reimb	901.02	
Personal Copies	10.50	
Personal Faxes	1.75	
M Brudigam - Summer Insurance Premium	551.48	
Lost Keys	15.00	
Lost iPad Charger/Repairs	205.00	
iPad Deposits	7,100.00	
Band Supplies	7.50	
Pad Lock	8.00	
SON-Migrant Reimb	7,050.00	
Thurston County - Proceeds	231.34	
Dixon County - Proceeds	19,496.85	
Wayne County- Proceeds	15,042.82	
Bank - Interest	98.14	
TOTAL REVENUE		<u><u>\$50,764.40</u></u>

EXPENSES

August Payables	580,880.68	
August Payroll	147,904.64	
TOTAL EXPENDITURES		<u><u>\$728,785.32</u></u>

TOTAL **\$657,738.47**

GENERAL FUND AS OF AUGUST 31, 2015 **\$657,738.47**

ALL Data

Current Cash Balance Report

Date: 08/01/2015 thru 08/31/2015

Arranged by:
Group ID and Activity Number

Activity Number and Name	Beginning Cash	Receipts	Disbursements	Adjustments	Cash Balance
A ATHLETICS					
100 FOOTBALL	-6,537.40	60.00	0.00	6,537.40	60.00
105 JH FOOTBALL	0.00	0.00	0.00	0.00	0.00
110 VOLLEYBALL	3,051.27	0.00	0.00	-1,958.12	1,093.15
115 JH VOLLEYBALL	0.00	0.00	0.00	0.00	0.00
120 GIRLS GOLF	0.00	0.00	0.00	0.00	0.00
125 BOYS BASKETBALL	19,448.10	54.00	0.00	-19,448.10	54.00
130 GIRLS BASKETBALL	12,073.48	0.00	0.00	-12,073.48	0.00
135 JH BOYS BASKETBALL	0.00	0.00	0.00	0.00	0.00
140 JH GIRLS BASKETBALL	0.00	0.00	0.00	0.00	0.00
145 TRACK	-13,432.37	0.00	0.00	13,432.37	0.00
150 JH TRACK	-5.00	0.00	0.00	5.00	0.00
155 BOYS GOLF	-1,370.45	0.00	0.00	1,370.45	0.00
160 NEW UNIFORMS	10,000.00	0.00	1,869.13	0.00	8,130.87
170 WRESTLING	-8,300.48	1,500.00	0.00	8,300.48	1,500.00
175 GEN ATHLETICS	-282.51	1,964.00	768.00	4,927.15	5,840.64
180 JH WRESTLING	0.00	0.00	0.00	0.00	0.00
190 ACTIVITY PASSES	0.00	0.00	0.00	0.00	0.00
A ATHLETICS Totals:	14,644.64	3,578.00	2,637.13	1,093.15	16,678.66
B CLASSES					
200 CLASS OF 2019	0.00	0.00	0.00	0.00	0.00
205 CLASS OF 2020	0.00	0.00	0.00	0.00	0.00
210 CLASS OF 2021	0.00	0.00	0.00	0.00	0.00
233 CLASS OF 2015	0.00	0.00	0.00	0.00	0.00
234 CLASS OF 2016	0.00	0.00	0.00	0.00	0.00
235 CLASS OF 2017	933.30	0.00	0.00	0.00	933.30
236 CLASS OF 2018	0.00	0.00	0.00	0.00	0.00
B CLASSES Totals:	933.30	0.00	0.00	0.00	933.30
C ORGANIZATIONS					
301 POWER DRIVE	1,140.74	0.00	0.00	0.00	1,140.74
302 FFA	100.00	158.10	0.00	0.00	258.10
305 DISTRICT 7 FCCLA	831.62	0.00	300.00	0.00	531.62
306 MUSIC BOOSTERS	0.00	0.00	0.00	0.00	0.00
310 NATIONAL HONOR SOCIETY	3,257.61	0.00	0.00	-500.00	2,757.61
315 FBLA	1,126.07	135.00	0.00	-150.00	1,111.07
320 ANNUAL	273.46	90.00	0.00	0.00	363.46
325 TOTAD	973.22	0.00	0.00	-396.00	577.22
330 FCCLA	2,169.14	0.00	130.00	0.00	2,039.14
335 STUCO	2,784.52	0.00	0.00	-450.00	2,334.52
340 SPEECH & DRAMA	0.00	0.00	0.00	0.00	0.00
345 ONE ACT	0.00	0.00	0.00	0.00	0.00
346 ART CLUB	2,114.62	0.00	0.00	0.00	2,114.62
385 LIBRARY	1,420.45	0.00	0.00	0.00	1,420.45
395 HOMECOMING	-281.90	281.90	0.00	0.00	0.00
501 HIGH SCHOOL SWING CHOIR	3,974.73	0.00	0.00	0.00	3,974.73
553 ELEMENTARY STUCO	572.81	0.00	0.00	0.00	572.81
C ORGANIZATIONS Totals:	20,457.09	665.00	430.00	-1,496.00	19,196.09
D CONCESSIONS					
400 CONCESSIONS	-142.90	0.00	0.00	0.00	-142.90
D CONCESSIONS Totals:	-142.90	0.00	0.00	0.00	-142.90

ALL Data

Current Cash Balance Report

Date: 08/01/2015 thru 08/31/2015

Arranged by:
Group ID and Activity Number

Activity Number and Name	Beginning Cash	Receipts	Disbursements	Adjustments	Cash Balance
E MISC					
350 SCHOLARSHIPS	0.00	0.00	1,100.00	1,100.00	0.00
502 YOUTH FOUNDATION	750.00	0.00	0.00	0.00	750.00
503 LOUNGE	1,336.81	0.00	54.00	0.00	1,282.81
505 CHECKING INTEREST	12,121.66	3.65	0.00	0.00	12,125.31
510 CD INTEREST	2,506.98	0.00	0.00	0.00	2,506.98
520 ELEMENTARY	9,602.74	0.00	0.00	0.00	9,602.74
540 POP FUND	13,046.19	0.00	195.50	0.00	12,850.69
550 STUDENT FEES	240.00	0.00	0.00	0.00	240.00
555 WAKEFIELD PLAYGROUND FUND	500.00	0.00	0.00	0.00	500.00
560 MEMORIALS	200.00	0.00	0.00	0.00	200.00
576 PE UNIFORMS	-396.00	726.00	288.00	396.00	438.00
577 STATE TOURNAMENTS	8,514.69	0.00	0.00	0.00	8,514.69
E MISC Totals:	48,423.07	729.65	1,637.50	1,496.00	49,011.22
Z Inactive					
215 CLASS OF 2005	0.00	0.00	0.00	0.00	0.00
220 CLASS OF 2006	0.00	0.00	0.00	0.00	0.00
225 CLASS OF 2007	0.00	0.00	0.00	0.00	0.00
226 CLASS OF 2008	0.00	0.00	0.00	0.00	0.00
227 CLASS OF 2009	0.00	0.00	0.00	0.00	0.00
228 CLASS OF 2010	0.00	0.00	0.00	0.00	0.00
229 CLASS OF 2011	0.00	0.00	0.00	0.00	0.00
230 CLASS OF 2012	0.00	0.00	0.00	0.00	0.00
231 CLASS OF 2013	0.00	0.00	0.00	0.00	0.00
232 CLASS OF 2014	0.00	0.00	0.00	0.00	0.00
300 VOCAL/INSTRUMENTAL CONTESTS	0.00	0.00	0.00	0.00	0.00
355 ENTREPRENEURSHIP	0.00	0.00	0.00	0.00	0.00
360 CINCO DE MAYO	0.00	0.00	0.00	0.00	0.00
365 VICA	0.00	0.00	0.00	0.00	0.00
370 EMBROIDERY	0.00	0.00	0.00	0.00	0.00
390 STUDENT ASSISTANCE	0.00	500.00	0.00	0.00	500.00
405 CONSTRUCTION	0.00	0.00	0.00	0.00	0.00
551 5TH BUSINESS FAIR	0.00	0.00	0.00	0.00	0.00
552 TITLE I CARNIVAL	0.00	0.00	0.00	0.00	0.00
575 Wakefield VB	1,500.00	0.00	406.85	-1,093.15	0.00
Z Inactive Totals:	1,500.00	500.00	406.85	-1,093.15	500.00
Report Totals:	85,815.20	5,472.65	5,111.48	0.00	86,176.37

Check Summary Report

Date: 08/01/2015 thru 08/31/2015

Check Number	Status	Check / Void Date	Vendor Name	PO Number	Description	Amount
08/05/2015						
008128	C	08/05/2015	Pepsi-Cola of Siouxland		Pop	249.50
008127	C	08/05/2015	Holiday Inn-Kearney		VB	406.85
08/05/2015 Total:						656.35
08/07/2015						
008129	V	08/18/2015	Sportsman's Authentic Athletic		FB Uniforms	0.00
08/18/2015						
008132	O	08/18/2015	Stadium Sports		PE Uniforms	288.00
008133	O	08/18/2015	Wayne State College		Scholarship Alex Conley	150.00
008131	O	08/18/2015	Sportsman's Authentic Athletic		New FB Uniforms	1,869.13
008130	C	08/18/2015	Nebraska FCCLA		Fall Leadership Conference	130.00
08/18/2015 Total:						2,437.13
08/19/2015						
008134	O	08/19/2015	Northeast Community College		NECC Rental	300.00
008135	O	08/19/2015	Office of Financial Aid		Sara Martin Scholarship	150.00
008137	O	08/19/2015	Wayne State College		Taryn Hingst	150.00
008136	C	08/19/2015	Lewis & Clark Conference		Conf Coaches Meeting	288.00
08/19/2015 Total:						888.00
08/27/2015						
008146	O	08/27/2015	Wisner-Pilger High School		VB Entry Fee 10-5-2015	125.00
008140	O	08/27/2015	Emerson-Hubbard High School		VB Entry Fee	75.00
008147	O	08/27/2015	Wayne State College		Scholarship/Tim	150.00
008138	O	08/27/2015	Neil Blohm		FB Official	60.00
008141	O	08/27/2015	Roger Lueth		FB Official	60.00
008144	O	08/27/2015	Rod L'Heureux		VB Officials	50.00
008145	O	08/27/2015	University of South Dakota		Scholarship NHS/Breanna	250.00
008139	O	08/27/2015	Heidi Brown		VB Official	50.00
008142	O	08/27/2015	Mike Mogus		FB Official	60.00
008143	O	08/27/2015	Northeast Community College		Scholarship NHS/Levi Nelson	250.00
08/27/2015 Total:						1,130.00
Report Total:						5,111.48

SELECTED

Receipt History Detail

Arranged by:
Receipt Date

Receipt Date	Receipt Number	Deposit Slip Number	Received From	Receipt Description	Amount
08/03/2015	000000		Yoder Meats	Incentive	50.00
Date Total for 08/03/2015:					50.00
08/06/2015	000000		Kyle Keagle	Donation	440.00
Date Total for 08/06/2015:					440.00
08/12/2015	000000		Peitz/Klein/Nuno	Camp Registration	60.00
08/12/2015	000000		Lynn Pierce	Donation	54.00
08/12/2015	000000		Activity Passes	15-16	1,040.00
08/12/2015	000000		PE Uniforms		390.00
Date Total for 08/12/2015:					1,544.00
08/13/2015	000000		FBLA	Split the Pot	60.00
Date Total for 08/13/2015:					60.00
08/17/2015	000000		PE	Uniforms	246.00
08/17/2015	000000		Activity Passes		470.00
Date Total for 08/17/2015:					716.00
08/19/2015	000000		Walt;hill	Lewis Clark Conf	64.00
Date Total for 08/19/2015:					64.00
08/24/2015	000000		Wakefield Wrestling	transfer	1,500.00
08/24/2015	000000		PE	Uniforms	90.00
Date Total for 08/24/2015:					1,590.00
08/25/2015	000000		FBLA	Beef Sticks	25.00
Date Total for 08/25/2015:					25.00
08/26/2015	000000		Conley	FB Jersey	40.00
Date Total for 08/26/2015:					40.00
08/27/2015	000000		Yearbook	Sales	90.00
08/27/2015	000000		Presbyterian Church	Donation for Students	500.00
Date Total for 08/27/2015:					590.00
08/28/2015	000000		Activity Pass		350.00
Date Total for 08/28/2015:					350.00
08/31/2015	000000		Interest	August 2015	3.65
Date Total for 08/31/2015:					3.65
Report Total:					5,472.65

Check Register

Direct

Dep. Invoice	Check Number	Check Date	Vendor ID	Vendor Name	Amount
Invoice		Invoice Date	PO Number	PO Date	Description

Checks Printed

1 - GENERAL FUND

Bank Account :A - Iowa-Nebraska State Bank

00046624		08/24/2015	APPLECOM	Apple, Inc.	
4349196899		08/13/2015		08/24/2015 iPads	12,720.00
				Check Total	12,720.00
00046625		08/24/2015	ARAMARKS	Aramark Uniform Services	
638-3791692		08/05/2015		08/24/2015 BB Uniforms & Towels	53.20
638-3794048		08/12/2015		08/24/2015 BB Uniforms & Towels	53.20
				Check Total	106.40
00046626		08/24/2015	ASCA	American School Counselor Association	
ASC1075860		04/24/2015		08/24/2015 ASCA Natl Model	50.95
				Check Total	50.95
00046627		08/24/2015	BLACKBOA	Blackboard	
1203495		08/12/2015		08/24/2015 Blackboard Connect K-12	1,081.00
				Check Total	1,081.00
00046628		08/24/2015	BOSTWICK	Bostwick Fencing LLC	
75159727479		08/19/2015		08/24/2015 Move Fence	3,577.77
75159727481		08/19/2015		08/24/2015 Move Fence	2,745.78
				Check Total	6,323.55
00046629		08/24/2015	CASCIO	Cascio Interstate Music	
326904		08/11/2015		08/24/2015 Bass Drum Lyre	29.52
				Check Total	29.52
00046630		08/24/2015	CENTLINK	Century Link	
402 287-2012		08/04/2015		08/24/2015 Phone Service	290.77
402 287-2943		08/04/2015		08/24/2015 BB Phone Service	61.38
				Check Total	352.15
00046631		08/24/2015	CHAMPROD	Championship Productions, Inc.	
1037766		08/18/2015		08/24/2015 Coaching Material	207.94
				Check Total	207.94
00046632		08/24/2015	CUBBY'S	Cubby's Inc.	
Aug15		08/13/2015		08/24/2015 Mower Diesel	34.22
Aug15-1		08/17/2015		08/24/2015 Diesel	104.52
				Check Total	138.74
00046633		08/24/2015	EGANSUPP	Egan Supply Co.	
233368		08/12/2015		08/24/2015 Felt Floor Saver	77.02
233855		08/12/2015		08/24/2015 Gym Floor Resurfacing	3,742.81
234143		08/18/2015		08/24/2015 Supplies	499.24

Check Register

Direct

Dep.	Check Number Invoice	Check Date Invoice Date	Vendor ID PO Number	Vendor Name PO Date	Description	Amount
					Check Total	4,319.07
	00046634	08/24/2015	EKBERGAU		Ekberg Auto Parts, Inc.	
	345161	08/04/2015		08/24/2015	BB Supplies	47.54
	345461	08/11/2015		08/24/2015	Undercoating	18.98
	345545	08/13/2015		08/24/2015	Oil Filter	5.38
	345590	08/14/2015		08/24/2015	BB Supplies	30.56
	345656	08/17/2015		08/24/2015	Belts	13.98
					Check Total	116.44
	00046635	08/24/2015	ESU1		ESU #1	
	MED-0006203	06/11/2015		08/24/2015	Laminating	1.35
	SP 4651	05/23/2015		08/24/2015	Summer Billing	5,741.10
					Check Total	5,742.45
	00046636	08/24/2015	FAIRSTOR		The Fair Store	
	Aug15-1	08/17/2015		08/24/2015	PK Supplies	6.39
					Check Total	6.39
	00046637	08/24/2015	GRAINGER		Grainger Inc.	
	9818310964	08/14/2015		08/24/2015	Condensate Pump	133.52
					Check Total	133.52
	00046638	08/24/2015	HENDANGE		Angel Henderson	
	Aug15	08/01/2015		08/24/2015	Found Library Book	18.00
					Check Total	18.00
	00046639	08/24/2015	INNOPROT		Innovative Protectives, Inc.	
	253135	08/12/2015		08/24/2015	Re-Upholster Benches	540.00
					Check Total	540.00
	00046640	08/24/2015	INTESTAT		Interstate All Battery Center	
	1913699007545	08/04/2015		08/24/2015	Battery	48.60
					Check Total	48.60
	00046641	08/24/2015	KENSBAND		Ken's Band Instrument Repair	
	2015-001024	08/10/2015		08/24/2015	Sousa Tuning Bits	48.00
					Check Total	48.00
	00046642	08/24/2015	KIMBELLM		Kimball Midwest	
	4376794	08/11/2015		08/24/2015	BB Supplies	325.33
					Check Total	325.33
	00046643	08/24/2015	KLEIJOLE		Jolene Klein	
	Jul15	08/08/2015		08/24/2015	Library Supplies	27.93
					Check Total	27.93
	00046644	08/24/2015	KORNERMA		Korner Mart	
	Aug15-A	08/18/2015		08/24/2015	Fuel	258.68

Check Register

Direct

Dep.	Check Number Invoice	Check Date Invoice Date	Vendor ID PO Number	Vendor Name PO Date	Description	Amount
					Check Total	258.68
	00046645	08/24/2015	LAKELEARN		Lakeshore Learning Materials	
	4014880815	08/14/2015		08/24/2015	PK Curriculum	2,985.01
					Check Total	2,985.01
	00046646	08/24/2015	LINWELD		Matheson Tri-Gas Inc	
	11829432	08/19/2015		08/24/2015	ITE Gases	315.15
					Check Total	315.15
	00046647	08/24/2015	MARCINC		Marco, Inc	
	17193597	06/29/2015		08/24/2015	Elem Overage B/W	306.06
	17193597-1	06/29/2015		08/24/2015	HS Overage B/W	107.94
	17193597-3	06/29/2015		08/24/2015	Copier Lease - Jun	1,527.27
	17340835	07/30/2015		08/24/2015	Copier Lease - Jul	1,527.27
	17340835-1	07/30/2015		08/24/2015	Copier Lease - Aug	1,527.27
					Check Total	4,995.81
	00046648	08/24/2015	MCGRAWH2		Mcgraw- Hill School Education LLC	
	87358416001	08/18/2015		08/24/2015	Speech Textbooks	2,696.22
					Check Total	2,696.22
	00046649	08/24/2015	MILLBLDG		Miller Building Supply	
	113352	07/29/2015		08/24/2015	Joint Tape	8.31
	113603	08/04/2015		08/24/2015	Water Fountain Supplies	11.62
	113690	08/05/2015		08/24/2015	Supplies	9.36
	113696	08/05/2015		08/24/2015	Supplies	12.36
	113945	08/10/2015		08/24/2015	Pressbox Repair	41.69
	114084	08/13/2015		08/24/2015	Supplies	29.70
	114408	08/20/2015		08/24/2015	Pry Bar	9.79
					Check Total	122.83
	00046650	08/24/2015	NDEASSMT		Nebraska Dept of Education	
	SMETZLER	08/20/2015		08/24/2015	English Language Worship Reg	42.00
					Check Total	42.00
	00046651	08/24/2015	NEBCOU		Nebr Council Of School Adm	
	BGOTHIER	08/15/2015		08/24/2015	Becky Gothier NASBO Dues	125.00
	JHEITZ	08/15/2015		08/24/2015	Jason Heitz NCSA Dues	585.00
	JWULF	08/15/2015		08/24/2015	Jerad Wulf NCSA Dues	570.00
	MBEJOT	08/15/2015		08/24/2015	Mark Bejot NCSA Dues	782.00
	MBEJOT-1	08/19/2015		08/24/2015	Labor Relations Conf	140.00
					Check Total	2,202.00
	00046652	08/24/2015	NEBRAIRF		Nebraska Air Filters Inc	
	0320716-IN	08/11/2015		08/24/2015	Filters	405.56
	0320717-IN	08/11/2015		08/24/2015	Filters	396.44
					Check Total	802.00

ALL Data

Check Register

Arranged by:
Check Number

Direct	Dep.	Check Number	Check Date	Vendor ID	Vendor Name	Amount
		Invoice	Invoice Date	PO Number	Description	
		00046653	08/24/2015	NORTHEA2	Northeast Ne Insurance Agency	
		Aug15-1	08/15/2015		Unbrella - Liability	4,102.00
		Aug15-2	08/15/2015		Errors/Omissions	1,850.00
		Aug15-3	08/15/2015		Bonds	231.00
		Aug15-4	08/15/2015		Auto Renewal	6,796.00
		Aug15-5	08/15/2015		Property Insurance	20,285.00
		Aug15-6	08/15/2015		General Liability	2,983.00
		Aug15-7	08/15/2015		Inland Marine	2,075.00
					Check Total	38,322.00
		00046654	08/24/2015	PEARSONE	Pearson Education	
		BK77419232	08/21/2015		Cooking Textbooks	216.82
					Check Total	216.82
		00046655	08/24/2015	PERSONAL	Personnel Concepts	
		9328512003	08/07/2015		Compliance Subscription	336.07
					Check Total	336.07
		00046656	08/24/2015	ROSEJULI	Julie Rose	
		Aug15	08/05/2015		Meat & Greet Supplies	12.66
					Check Total	12.66
		00046657	08/24/2015	SHOPCO	Shopko Store Operating Co., LLC	
		6501	08/13/2015		Epi Pens	300.48
					Check Total	300.48
		00046658	08/24/2015	SPORTSMA	Sportsman's Inc	
		39568	07/10/2015		Football Uniforms	11,000.00
					Check Total	11,000.00
		00046659	08/24/2015	STAPLES	Staples Credit Plan	
		9726162299	07/22/2015		Trash Can	11.54
		9726927192	08/10/2015		Label Maker Tape	59.97
		9726927192-1	08/10/2015		Conf Activity Pass	53.37
					Check Total	124.88
		00046660	08/24/2015	TAYLORMU	Taylor Music, Inc	
		2090637-IN	08/11/2015		Marching Flip Folios	48.00
					Check Total	48.00
		00046661	08/24/2015	TEACSTRA	Teaching Strategies	
		Aug15	08/24/2015		LLC Online Svc Subscription	731.50
					Check Total	731.50
		00046662	08/24/2015	VISA	VISA	
		Aug15-A	08/17/2015		PK Curriculum	1,258.75
		Aug15-C	08/17/2015		Battle of the Books	1,115.00
		Aug15-D	08/17/2015		Library Conf Reg - JK	135.00
		Aug16-B	08/17/2015		Communication Textbooks	242.14

ALL Data

Check Register

Arranged by:
Check Number

Direct

Dep.	Check Number Invoice	Check Date Invoice Date	Vendor ID PO Number	Vendor Name PO Date	Description	Amount
					Check Total	2,751.32
	00046663	08/24/2015	WALMART2		Walmart Community	
	522400350273	08/12/2015		08/24/2015	Classroom Supplies	140.17
					Check Total	140.17
	00046664	08/24/2015	WALSHTJ		TJ Walsh	
	Aug15	08/01/2015		08/24/2015	Found Library Book	11.10
					Check Total	11.10
	00046665	08/24/2015	WCSINTER		Wakefield School-Interim	
	4350	08/18/2015		08/24/2015	Speaker	1,250.00
					Check Total	1,250.00
	00046666	08/24/2015	WESTERNR		Western Roofing	
	805-987	08/14/2015		08/24/2015	Roof Repair	433.02
					Check Total	433.02
					1 - GENERAL FUND Totals:	102,433.70

Check Register

Direct
 Dep. Check Number Invoice Invoice Date Vendor ID PO Number Vendor Name PO Date Description Amount

2 - LUNCH FUND

Bank Account :B - Iowa-Nebraska State Bank

00003914	08/24/2015	APPEARA	Appearra			
0053180	08/13/2015		08/24/2015	Aprons, Mops & Towels		30.33
0054952	08/20/2015		08/24/2015	Aprons, Mops & Towels		34.46
				Check Total		64.79
00003915	08/24/2015	BRAUFOOD	Braunger Foods			
40915	04/09/2015		08/24/2015	Credit		-5.00
409152	04/09/2015		08/24/2015	Credit		-10.00
465103	08/12/2015		08/24/2015	Food/Supplies		774.15
465900	08/19/2015		08/24/2015	Food		421.48
				Check Total		1,180.63
00003916	08/24/2015	EARTHBAK	Earthgrains Baking Companies, Inc.			
54164406948	08/18/2015		08/24/2015	Buns		291.51
				Check Total		291.51
00003917	08/24/2015	GRAOEDG	The Graphic Edge			
908432	08/04/2015		08/24/2015	Staff Shirts		226.77
908440	08/04/2015		08/24/2015	Staff Shirts		134.31
				Check Total		360.08
00003918	08/24/2015	HILADAIR	Hiland Dairy			
432911	08/21/2015		08/24/2015	Milk/Juice		293.22
				Check Total		293.22
00003919	08/24/2015	HOBART	Hobart Sales And Service			
OC67188	08/12/2015		08/24/2015	Knife Sharpening		88.30
				Check Total		88.30
00003920	08/24/2015	MILLBLDG	Miller Building Supply			
113621	08/04/2015		08/24/2015	Supplies		18.94
				Check Total		18.94
00003921	08/24/2015	PEGLSYSC	Sysco Lincoln			
508071622	08/07/2015		08/24/2015	Food/Supplies		1,071.75
508120214	08/12/2015		08/24/2015	Napkins		-60.30
508141121	08/14/2015		08/24/2015	Food/Supplies		3,519.88
508211128	08/21/2015		08/24/2015	Food/Supplies		2,426.44
				Check Total		6,957.77
2 - LUNCH FUND Totals:						9,255.24

ALL Data

Check Register

Arranged by:
Check Number

Direct

ep. Invoice	Check Number	Check Date	Vendor ID	Vendor Name	Amount
		Invoice Date	PO Number	PO Date	Description

5 - DEPRECIATION FUND

Bank Account :E - Nebraska State Bank

00001100		08/24/2015	PFLANZ	Pflanz Electronics	
610782		08/18/2015		08/24/2015 Football Field Sound System	2,515.88

Check Total 2,515.88

5 - DEPRECIATION FUND Totals: 2,515.88

Total of Checks Printed: 114,204.82

Report Total: 114,204.82

ALL Data

Check Register

Arranged by:
Check Number

Direct

ep.	Check Number	Check Date	Vendor ID	Vendor Name	Amount
	Invoice	Invoice Date	PO Number	PO Date Description	

Checks Printed

1 - GENERAL FUND

Bank Account :A - Iowa-Nebraska State Bank

00046667	08/26/2015	REALLYGO		Really Good Stuff, Inc	
5260907	08/14/2015		08/26/2015	Library Books	851.87

Check Total 851.87

00046668	08/26/2015	WCSBUS		Wakefield School-Depreciation Fund	
Aug 2015	08/26/2015		08/26/2015	Transfer to Depreciation Fund	250,000.00

Check Total 250,000.00

1 - GENERAL FUND Totals: 250,851.87

Total of Checks Printed: 250,851.87

Report Total: 250,851.87

USEFUL INFORMATION

Note to MAC Users:

You can use a MAC to input information but there have been issues noted in printing from the MAC. The only solution that is known is to print via a PC.

MUST COMPLETE THIS PAGE - Basic Data Input Area

The Basic Data Input Area is designed to help common information flow throughout the Budget Form.

Cover Page - Page 1

The Total Property Tax Requirement is carried forward from Page 2; however, you will need to input how much of that tax request is for Principal and Interest on Bonds.

Outstanding Bonded Indebtedness - if you complete the worksheet pages this will fill in automatically. If you do not you will need to indicate your balances as of September 1, 2013.

Pages 2 through 4 (If you utilize the Worksheet Pages - Begin Inputting on Worksheet Pages)

These pages are currently completed with formulas which pull from the Worksheet Pages. **If you utilize the Worksheet Pages, Pages 2 through 4 will be completed automatically for you.** If you do not wish to utilize the worksheet pages you can simply type in your numbers on Pages 2 through 4. The only cells with formulas that cannot be over-written are those that provide an essential calculation (example - Total Resources Available).

A complete and accurate budget should have the prior year Balance Forward **equal** Total of Beginning Balances. We have built into the spreadsheet a comparison between these two numbers. If these two numbers **do not agree** a statement will appear indicating it must equal prior year balance forward.

We have also built in a comparison between the Total Requirement and Total Resources Available. If these two numbers **do not agree** in the 2013-2014 budget you will receive the message "Budget Not Balanced".

The County Treasurer's Commission is a calculation, if you wish to alter the County Treasurer's Commission amount to round to a whole number or for a similar reason you may over-write the formula.

Worksheet Pages - **FOR YOUR USE ONLY - NOT TO BE SUBMITTED TO THE STATE**

The last 15 sheets of this file are worksheet (individual fund) pages. These pages are provided for your use; however, you do not have to use them. For more information about the worksheets, see the Budget Guidelines. **If you do utilize the Worksheet Pages, Pages 2 through 4 will be completed automatically for you.**

Moving From Page to Page:

There are several ways to move around your budget form. You can hold down the CTRL and hit either Page Down (Moves you ahead a sheet) or Page Up (Moves you to previous sheet). The other option is to use your mouse to click on the different sheet tabs.

I Want to See Descriptions on Left When Inputting Numbers in Budget Column:

On the "View" ribbon in the Window area there is an item called Freeze Panes. Freeze Panes allows you to tell the computer what columns and/or rows you wish to see at all times. Freeze Panes will freeze whatever rows are above your active cell and also whatever columns are to the left of your active cell. By choosing the option again it will turn the option off.

The Cell Is Locked:

UNDER NO CIRCUMSTANCES WILL PASSWORDS BE GIVEN OUT. Either the cell is locked because it contains a formula or you are trying to input information in the wrong cell.

You Note Any Errors Or Have Any Problems:

We have tested this spreadsheet through various methods to help identify any problem areas and to ensure formulas are correct. However, we cannot account for all the variables that occur with each individual budget. If you feel there is an error in a formula please contact us immediately so we can go over the problem(s) and if necessary correct the situation.

All of your comments or ideas to better the budget form are taken into consideration. Please feel free to **contact us at (402) 471-2111** with these items. We make this available to you to HELP in the budget process and wish to make any improvements that would make the spreadsheet more user friendly.

Due by September 20th:

- Budget Form
(If you utilized the School District Budget Worksheets, Please Do Not Mail it in.)
- Page 2, Total Resources Available (Column 4) agrees to Total Requirements (Column 9).
- Page 2, Total Beginning Balance (Column 1) agrees to Page 3 Total Ending Balance (Column 8).
- Page 3, Total Beginning Balance (Column 1) agrees to Page 4 Total Ending Balance (Column 8).
- Page 4, Total Beginning Balance (Column 1) agrees to the prior School District Budget Form, Page 4, Total Ending Balance (Column 8). If it does not agree, please provide explanation.
- Schedule B, Line 28 agrees to Schedule C District Property Tax (Column A).
- Proof of Publication for Notice of Budget Hearing (NBH).
- Schedules A, B, and C
- Certificate of Valuation(s). Total Certified Valuation was completed on Page 1.
- Lid Computation Form LC-2 and the Special Grant Fund List
- Joint Public Agency & Interlocal Agreements is indicated by checking the box. If school district answers YES, the Report of Joint Public Agency & Interlocal Agreements is due on or before December 31st.

If your school district has held a successful election to override the levy limits, which is in effect for this budget year, you will also need:

- Election Ballot and Certified Election Returns for the special election to override the levy limits.

Please Complete this **Basic Data Input Area**
 It will put information consistently throughout Budget Form.

MUST COMPLETE THESE LINES

County-District #:	90-0560
Name of School:	Wakefield Public Schools
Name of County:	Wayne County
Class:	C-2
Hearing Held On:	
Day of month:	14
Month:	September
Year:	2015
Time:	6:45
A.M. or P.M.:	P. M.
Location of Hearing:	Wakefield Board of Education Room
Special Hearing to Set Final Tax Request Held On:	
Day of month:	14
Month:	September
Year:	2015
Time:	6:55
A.M. or P.M.:	P. M.
Location of Hearing:	Wakefield Board of Education Room

**MUST
 COMPLETE
 This Yellow
 Section**

**2015-2016
STATE OF NEBRASKA
SCHOOL DISTRICT BUDGET FORM**

County-District #: 90-0560 Class #: C-2
Wakefield Public Schools
TO THE COUNTY BOARD AND COUNTY CLERK OF
Wayne County

This budget is for the Period **SEPTEMBER 1, 2015 through AUGUST 31, 2016**

Upon Filing, The School Certifies the Information Submitted on this Form to be Correct:

AMOUNT OF PERSONAL AND REAL PROPERTY TAX REQUIRED FOR:	Principal and Interest on Bonds	All Other Purposes	TOTAL
General Fund		\$ 4,593,106.01	\$ 4,593,106.01
Bond Fund(s) <i>[If More Than 1 Bond Fund - Total All Together]</i>	\$ 24,174.75		\$ 24,174.75
Special Building Fund		\$ 12,086.87	\$ 12,086.87
Qualified Capital Purpose Undertaking Fund		\$ 145,045.45	\$ 145,045.45
Total All Funds	\$ 24,174.75	\$ 4,750,238.33	\$ 4,774,413.08

NOTE: We have removed the signature from the front cover, but you are now required to remit a copy of the board minutes or resolution where the budget was adopted

Outstanding Bonded Indebtedness as of September 1, 2015
(Include Bond Fund(s) and Qualified Capital Purpose Undertaking Fund)

\$ 1,084,864.00	Principal
\$ 52,897.00	Interest
\$ 1,137,761.00	Total Outstanding Bonded Indebtedness

Total Certified Valuation (All Counties) \$ 478,654,388

*(Certification of Valuation(s) from County Assessor **MUST** be attached)*

Report of Joint Public Agency & Interlocal Agreements

Was this Subdivision involved in any Interlocal Agreements or Joint Public Agencies for the reporting period of July 1, 2014 through June 30, 2015?

YES NO

If YES, Please submit Interlocal Agreement Report by December 31, 2015.

Report of Trade Names, Corporate Names & Business Names

Did the subdivision operate under a separate Trade Name, Corporate Name, or other Business Name during the period of July 1, 2014 through June 30, 2015?

YES NO

If YES, Please submit Trade Name Report by December 31, 2015.

Has your School District held a successful election to override the levy limits provided in Statute 77-3442, which is in effect for 2014-2015 school fiscal year?

YES NO

County Clerk's Use Only

APA Contact Information

Auditor of Public Accounts
Telephone: (402) 471-2111 FAX: (402) 471-3301
Website: www.auditors.nebraska.gov
Questions - E-Mail: Deann.Haeffner@nebraska.gov

Submission Information - Adopted Budget Due by 9-20-2015

1. Auditor of Public Accounts - PO Box 98917 - Lincoln, NE 68509
Submit Adobe PDF Document via Website:
<http://www.auditors.nebraska.gov/>

2. County Board (SEC. 13-508), C/O County Clerk

3. Nebraska Dept. of Education

2015-2016 BUDGET ADOPTED									
	TOTAL BEGINNING BALANCE (Column 1)	TOTAL AVAILABLE RESOURCES BEFORE PROPERTY TAXES (Including Beginning Balances) (Column 2)	PERSONAL AND REAL PROPERTY TAXES (Column 3)	TOTAL RESOURCES AVAILABLE (Col 2 + Col 3) (Column 4)	TOTAL BUDGET OF DISBURSEMENTS & TRANSFERS - SPECIAL EDUCATION (Column 5)	TOTAL BUDGET OF DISBURSEMENTS & TRANSFERS - NON-SPECIAL EDUCATION (Column 6)	TOTAL BUDGET OF DISBURSEMENTS & TRANSFERS (Col 5 + Col 6) (Column 7)	NECESSARY CASH RESERVE (Column 8)	TOTAL REQUIREMENTS (Col 7 + Col 8) (Column 9)
General	1,118,989.00	3,028,860.00	4,547,175.00	7,576,035.00	969,432.00	5,837,875.00	6,807,307.00	768,728.00	7,576,035.00
Depreciation	474,915.00	550,365.00		550,365.00			550,365.00		550,365.00
Employee Benefit	18,264.00	20,767.00		20,767.00			20,767.00	-	20,767.00
Contingency	-	-		-			-		-
Activities	89,154.00	229,204.00		229,204.00			229,204.00	-	229,204.00
School Lunch	71,481.00	314,516.00		314,516.00			314,516.00	-	314,516.00
Bond	80,135.00	80,155.00	23,933.00	104,088.00			75,975.00	28,113.00	104,088.00
Special Building	492,992.00	493,402.00	11,966.00	505,368.00			505,368.00		505,368.00
Qualified Capital Purpose Undertaking	94,283.00	94,308.00	143,595.00	237,903.00			160,403.00	77,500.00	237,903.00
Cooperative	-	-		-			-	-	-
Student Fee	264.00	2,064.00		2,064.00			2,064.00	-	2,064.00
				-					-
TOTAL ALL FUNDS	2,440,477.00	4,813,641.00	4,726,669.00	9,540,310.00	969,432.00	5,837,875.00	8,665,969.00	874,341.00	9,540,310.00

NOTE: Total Disbursements and Transfers (Column 7) is the sum of Column 5 and Column 6 for the General Fund only. For all other funds, numbers will pull automatically from the Worksheets.

PERSONAL AND REAL PROPERTY TAX RECAP	General Fund	Bond Fund(s) [Total Of All Bond Funds]	Special Building Fund	Qualified Capital Purpose Undertaking Fund
PERSONAL AND REAL PROPERTY TAXES FROM COLUMN 3 (Line A)	4,547,175.00	23,933.00	11,966.00	143,595.00
COUNTY TREASURER'S COMMISSION AT 1% (Line B)	45,931.01	241.75	120.87	1,450.45
DELINQUENT TAX ALLOWANCE (If over 5% of Line A, see Instructions) (Line C)	-	-	-	-
TOTAL PERSONAL AND REAL PROPERTY TAXES (Line A + Line B + Line C) (Line D)	4,593,106.01	24,174.75	12,086.87	145,045.45

CERTIFIED STATE AID	MOTOR VEHICLE TAXES
\$ 437,929.00	\$ 138,000.00

COUNTY TREASURER'S BALANCE, 9-1-2015			
544,989.00	18,000.00	20,000.00	19,313.00

2014-2015 ACTUAL/ESTIMATED								
	TOTAL BEGINNING BALANCE (Column 1)	TOTAL AVAILABLE RESOURCES BEFORE PROPERTY TAXES (Including Beginning Balances) (Column 2)	PERSONAL AND REAL PROPERTY TAXES (Column 3)	TOTAL RESOURCES AVAILABLE (Col 2 + Col 3) (Column 4)	TOTAL DISBURSEMENTS & TRANSFERS - SPECIAL EDUCATION (Column 5)	TOTAL DISBURSEMENTS & TRANSFERS - NON-SPECIAL EDUCATION (Column 6)	TOTAL DISBURSEMENTS & TRANSFERS (Col 5 + Col 6) (Column 7)	TOTAL ENDING BALANCE (Col 4 - Col 7) (Column 8)
General	1,232,132.00	3,687,593.00	3,189,181.00	6,876,774.00	817,034.00	4,940,751.00	5,757,785.00	1,118,989.00
Depreciation	252,541.00	506,215.00		506,215.00			31,300.00	474,915.00
Employee Benefit	21,665.00	24,349.00		24,349.00			6,085.00	18,264.00
Contingency	-	-		-			-	-
Activities	82,830.00	207,221.00		207,221.00			118,067.00	89,154.00
School Lunch	83,443.00	319,930.00		319,930.00			248,449.00	71,481.00
Bond	75,111.00	77,998.00	79,912.00	157,910.00			77,775.00	80,135.00
Special Building	688,539.00	693,208.00	119,840.00	813,048.00			320,056.00	492,992.00
Qualified Capital Purpose Undertaking	64,403.00	70,970.00	141,290.00	212,260.00			117,977.00	94,283.00
Cooperative	-	-		-			-	-
Student Fee	240.00	1,990.00		1,990.00			1,726.00	264.00
				-				-
TOTAL ALL FUNDS	2,500,904.00	5,589,474.00	3,530,223.00	9,119,697.00	817,034.00	4,940,751.00	6,679,220.00	2,440,477.00

NOTE: Total Disbursements and Transfers (Column 7) is the sum of Column 5 and Column 6 for the General Fund only. For all other funds, numbers will pull automatically from the Worksheets.

MOTOR VEHICLE TAXES	
\$	141,826.00

2013-2014 ACTUAL								
	TOTAL BEGINNING BALANCE (Column 1)	TOTAL AVAILABLE RESOURCES BEFORE PROPERTY TAXES (Including Beginning Balances) (Column 2)	PERSONAL AND REAL PROPERTY TAXES (Column 3)	TOTAL RESOURCES AVAILABLE (Col 2 + Col 3) (Column 4)	TOTAL DISBURSEMENTS & TRANSFERS - SPECIAL EDUCATION (Column 5)	TOTAL DISBURSEMENTS & TRANSFERS - NON-SPECIAL EDUCATION (Column 6)	TOTAL DISBURSEMENTS & TRANSFERS (Col 5 + Col 6) (Column 7)	TOTAL ENDING BALANCE (Col 4 - Col 7) (Column 8)
General	1,131,285.00	3,547,758.00	2,958,972.00	6,506,730.00	805,179.00	4,469,419.00	5,274,598.00	1,232,132.00
Depreciation	665,800.00	666,101.00		666,101.00			413,560.00	252,541.00
Employee Benefit	20,785.00	24,728.00		24,728.00			3,063.00	21,665.00
Contingency	-	-		-			-	-
Activities	77,662.00	188,705.00		188,705.00			105,875.00	82,830.00
School Lunch	60,009.00	294,636.00		294,636.00			211,193.00	83,443.00
Bond	73,263.00	77,102.00	72,274.00	149,376.00			74,265.00	75,111.00
Special Building	671,759.00	1,802,486.00	158,062.00	1,960,548.00			1,272,009.00	688,539.00
Qualified Capital Purpose Undertaking	70,490.00	74,020.00	66,733.00	140,753.00			76,350.00	64,403.00
Cooperative	-	-		-			-	-
Student Fee	240.00	240.00		240.00			-	240.00
				-				-
TOTAL ALL FUNDS	\$ 2,771,293.00	6,675,776.00	3,256,041.00	9,931,817.00	805,179.00	4,469,419.00	7,430,913.00	2,500,904.00

NOTE: Total Disbursements and Transfers (Column 7) is the sum of Column 5 and Column 6 for the General Fund only. For all other funds, numbers will pull automatically from the Worksheets.

MOTOR VEHICLE TAXES	
\$	142,049.00

CORRESPONDENCE INFORMATION

ENTITY OFFICIAL ADDRESS

If no official address, please provide address where correspondence should be sent

NAME	Wakefield Public Schools
ADDRESS	802 Highland Street, Box 330
CITY & ZIP CODE	Wakefield, NE 68784
TELEPHONE	(402) 287 - 2012
WEBSITE	www.wakefieldschools.org

	BOARD CHAIRPERSON	CLERK/TREASURER/SUPERINTENDENT/OTHER	PREPARER
NAME	Mr. Tim Bebee	Mr. Mark Bejot	
TITLE /FIRM NAME	Chairperson	Superintendent	
TELEPHONE	(402) 287 - 2719	(402) 287 - 2012	
EMAIL ADDRESS	timbebee59@gmail.com	mbejot@esu1.org	

For Questions on this form, who should we contact (please √ one): Contact will be via email if supplied.

- Board Chairperson
- Clerk / Treasurer / Superintendent / Other
- Preparer

SCHEDULE A GENERAL FUND LID EXCLUSIONS

County-District #

90-0560

Wakefield Public Schools

Line No.		2015-2016 Amount Budgeted To Spend
1	Repairs to Infrastructure Damaged by a Natural Disaster: (List repair)	
2		
3		
4		
5		
6		
7		
8		
9	Total Repairs to Infrastructure Damaged by a Natural Disaster (Lines 1 through 8)	\$ -
10	Judgments: (List the types of judgments obtained against your School District to the extent such judgment is not paid by liability insurance)	
11		
12		
13		
14		
15		
16		
17	Total Judgments (Lines 11 through 16)	\$ -
18	Distance Education Courses	
19	Voluntary Termination Agreements	
20	Retirement Contribution Increase (Through Fiscal Year 2016-2017)	
21	Total General Fund Lid Exclusions - To LC-2 Form (Line 9 + Line 17 + Line 18 + Line 19 + Line 20)	\$ -

Schedule B - Exclusions From the Levy Limitation

County-District #

90-0560

Wakefield Public Schools

Line No.		General Fund (Column A)	Bond Fund (Column B)	Special Building Fund (Column C)	Qualified Capital Purpose Undertaking Fund (Column D)
1	Total Personal and Real Property Taxes (From Page 2, Property Tax Recap, Line D)	\$ 4,593,106.01	\$ 24,174.75	\$ 12,086.87	\$ 145,045.45
2	Exclusions:				
3	Voluntary termination agreements with certificated employees:				
4					
5	Special Building Fund projects commenced prior to April 1, 1996:				
6					
7					
8					
9					
10	Judgments not paid by liability insurance:				
11					
12					
13					
14	Lease-purchase contracts approved prior to July 1, 1998:				
15					
16					
17					
18					
19					
20					
21					
22	Bonded indebtedness approved according to law and secured by a levy on property:				
23	Bond Principal *		\$ 75,000.00		
24	Bond Interest *		\$ 975.00		
25	Total Exclusions before 1% County Treasurer's Commission (Lines 4 through 24)	\$ -	\$ 75,975.00	\$ -	\$ -
26	1% County Treasurer's Commission on Exclusions (.01 X Line 25)	\$ -	\$ 767.42	\$ -	\$ -
27	Total Exclusions (Line 25 + Line 26)	\$ -	\$ 76,742.42	\$ -	\$ -
28	Total Personal and Real Property Tax Requirement Subject to the Levy Limitation (Line 1 minus Line 27)	\$ 4,593,106.01	\$ -	\$ 12,086.87	\$ 145,045.45

* Taxes levied by a school district on or after April 2, 2008, for the payment of the principal of, premium of, or interest on such a general obligation bond of such school district and the payment of all costs associated with membership in a risk management pool shall be subject to the levy limit.

Schedule C - Levy Limit Calculation

School Name: Wakefield Public Schools

NOTE: This Schedule is not provided for levy setting purposes.

County-District # 90-0560

Line No.		District Property Tax Request LESS Exclusions (Should agree to Line 28 of Schedule B) (Column A)	District Assessed Valuation (Column B)	Levy Subject to Limitation [(Column A / Column B) x 100] (Column C)
1	General Fund	4,593,106.01	478,654,388.00	0.959587
2	Bond Fund	-	478,654,388.00	-
3	Bond Fund K-8		478,654,388.00	-
4	Bond Fund 9-12		478,654,388.00	-
5	Bond Fund _____		478,654,388.00	-
6	Special Building Fund	12,086.87	478,654,388.00	0.002525
7	Qualified Capital Purpose Undertaking Fund	145,045.45	478,654,388.00	0.030303
8	Qualified Capital Purpose Undertaking Fund K-8		478,654,388.00	-
9	Qualified Capital Purpose Undertaking Fund 9-12		478,654,388.00	-
10	Learning Community General Fund Levy			
11	Learning Community Special Building Levy			
12	Total Levy Subject to Limitation (Total of Lines 1 through 11)			0.992415

NOTE: If the total levy, per this Schedule (Line 12, Column C), is \$1.05, or less, the levy limitation per State Statute Section 77-3442 has been met.

If Line 12, Column C, is greater than \$1.05 and you did not hold a successful election to override the levy, you are in violation of the levy lid. The school district must reduce property taxes to meet the levy limitation.

If Line 12, Column C, is greater than \$1.05 and you held a successful election to override the levy, which is in effect for the 2012-2013 school fiscal year, you must attach a copy of the election ballot and the certified election returns to your budget.

Qualified Capital Purpose Undertaking Fund levy. A district may only exceed the maximum levy of five and one-fifth cents per one hundred dollars of taxable valuation in any year if (i) the taxable valuation of the district is lower than the taxable valuation in the year in which the district last issued capital purpose undertaking bonds or (ii) such maximum levy is insufficient to meet the annual principal and interest obligations for all capital purpose undertaking bonds. (Statute 79-10,110).

Learning Community Member Schools - The total levy, which must be \$1.05 or less, includes the Learning Community General Fund, Learning Community Special Building Fund, School District General Fund, and School District Special Building Fund.

NOTE: The sole purpose of this Schedule is to determine if the School District has met the levy limitation. This Schedule is not provided for levy setting purposes. Please note that because the property tax request (per this Schedule) does not include the property tax request attributable to the exclusion items, the levy (per this Schedule) may not reflect the levy set by your County Board of Equalization.

REMINDER: School districts that have combined levies greater than \$1.20 or the combined levies that exceeded the maximum levy approved at a special election may be subject to petitions for the free holding of territory. Combined levies do not include levies for bonded indebtedness approved by the voters of a school district or levies for the refinancing of such bonded indebtedness.

Superintendent Pay Transparency Notice—Proposed Contract Mark Bejot

Notice is hereby given that Wakefield Public Schools has approval of a proposed superintendent employment contract/contract amendment on its agenda for the board meeting to be held on March 12, 2015 at 7:00 pm at the Board of Education Room in Wakefield, Nebraska.

After the 2015/16 school year, how many years remain on the contract:
(Column F must be completed if additional years remain on contract.)

1

The estimated costs to the district for the 2015/16 year and future years are listed below:

	2015/16 Base Pay, Additional Compensation & Benefits	Future Base Pay, Additional Compensation & Benefits per Contract	TOTAL CONTRACT COST
Base Pay for the Total FTE	\$ 109,817.00	\$ 109,817.00	\$ 219,634.00
Compensation for activities outside of the regular salary:			
• <i>Extended contracts / Activities outside of regular salary</i>			\$ -
• <i>Bonus/Incentive/Performance Pay</i>			\$ -
• <i>Stipends</i>			\$ -
• <i>All other costs not mentioned above</i>			\$ -
Benefits and Payroll Costs Paid by district:			
• <i>Insurances (Health, Dental, Life, Long Term Disability)</i>	\$ 19,930.00	\$ 19,930.00	\$ 39,860.00
• <i>Cafeteria Plan Stipend</i>			\$ -
• <i>Cash in lieu of insurance</i>			\$ -
• <i>Employee's share of retirement, deferred compensation, FICA and Medicare if paid by the district</i>			\$ -
• <i>District's share of retirement, FICA and Medicare</i>	\$ 19,249.00	\$ 19,249.00	\$ 38,498.00
• <i>IRS value of housing allowance</i>			\$ -
• <i>IRS value of vehicle allowance</i>			\$ -
• <i>Additional leave days</i>	\$ 8,785.00	\$ 8,785.00	\$ 17,570.00
• <i>Annuities</i>			\$ -
• <i>Service credit purchase</i>			\$ -
• <i>Association / Membership dues</i>	\$ 830.00	\$ 830.00	\$ 1,660.00
• <i>Cell Phone/Internet reimbursement</i>	\$ 480.00	\$ 480.00	\$ 960.00
• <i>Relocation reimbursement</i>			\$ -
• <i>Travel allowance/reimbursement</i>			\$ -
• <i>Mileage Allowance</i>			\$ -
• <i>Educational tuition assistance</i>			\$ -
• <i>All other benefit costs not mentioned above</i>	\$ 612.00	\$ 612.00	\$ 1,224.00
Totals:	\$ 159,703.00	\$ 159,703.00	\$ 319,406.00

Instructions for Completing Schedule D -Superintendent Pay Transparency Act Notice

Schedule D is provided to collect current and future costs to a school district for the services of the school superintendent in accordance with LB 470.

To complete Schedule D, enter the following information (where applicable) into highlighted cells on Schedule D. Row 1 & 2 have been provided to assist with the school publication requirements of LB 470, they are not a required part of this form and may be left incomplete.

Cell Reference	Item	Description
F4	Contract Length	The number of years that remain until end of the contract.
E11	Base Pay	The total base pay before any deductions.
F14	Extended Contracts	Amount paid if number of days in contract increase. Include extra duty pay, e.g. coaching.
F15	Bonus, Incentive or Performance Pay	Amount paid if specific conditions listed in the contract are met.
F16	Stipends	Additional compensation for additional hours, days worked, or extra duty pay (sports or activities).
F17	All other costs not listed above	Any other additional compensation paid by the district.
F20	Insurance	District cost for health-related insurance [e.g., Health, Dental, Life, Long Term Disability (% rate of salary + benefits)]
F21	Cafeteria Plan Stipend	District contribution to the individual's plan. Includes individual's or family deductible.
F22	Cash in lieu of insurance	Amount paid by the district for not participating in the district insurance plan(s).
F24	Employee's share of retirement...	Amount paid by district to cover retirement contribution, deferred compensation, FICA and Medicare traditionally paid by an employee.
F25	District share of retirement...	Amount paid by district for the employer share of retirement (9.8778%), FICA (6.2% up to \$117,000) and Medicare (1.45%).
F26	IRS value of housing allowance	Amount equal to the fair market rental value of the housing (purchased or provided).
F27	IRS value of vehicle allowance	Amount equal to annual cost of a vehicle – sole use for superintendent (purchased or provided).
F28	Leave days	Estimated leave days used (e.g. 3-year average); additional leave days included in contract; value of unused leave balance from previous year.
F29	Annuities	Amount paid by the district to purchase annuities.
F30	Service Credit Purchase	Amount paid by district to purchase additional school retirement credit.
F31	Association / Membership Dues	Cost of all memberships and fees paid by district.
F32	Cell Phone/Internet Reimbursement	Cost of cell phone and internet bills reimbursed by district.
F33	Relocation reimbursement	Cost of all moving expenses for relocation reimbursed by the district.
F34	Travel allowance reimbursement	Cost transportation paid by the district; projected or based on previous year's travel; (e.g. mileage, fuel, per diem rate).
F34	Mileage allowance	Monthly mileage allowance paid by district
F36	Educational tuition assistance	Amount to be paid by district for cost of job-related tuition.
F37	All other benefit costs not listed above	Employee's share of any other benefit if paid by the district (e.g. stipends for expenses).

NOTICE OF BUDGET HEARING AND BUDGET SUMMARY

State of Nebraska
Budget Form - NBH-School District
 Statement of Publication

Wakefield Public Schools (90-0560) in Wayne County County, Nebraska

PUBLIC NOTICE is hereby given, in compliance with the provisions of State Statute Sections 13-501 to 13-513, that the governing body will meet on the 14 day of September, 2015 at 6:45 o'clock, P. M. , at Wakefield Board of Education Room for the purpose of hearing support, opposition, criticism, suggestions or observations of taxpayers relating to the following proposed budget and to consider amendments relative thereto. The budget detail is available at the office of the Clerk/Secretary during regular business hours.

Mrs. Julie Rose

Clerk/Secretary

FUNDS	Actual Disbursements & Transfers	Actual/Estimated Disbursements & Transfers	Budgeted Disbursements & Transfers	Necessary Cash Reserve	Total Available Resources Before Property Taxes	Fee and Delinquent Tax Allowance	Total Personal and Real Property Tax Requirement
	2013-2014	2014-2015	2015-2016				
	(1)	(2)	(3)	(4)	(5)	(6)	(7)
General	\$ 5,274,598.00	\$ 5,757,785.00	\$ 6,807,307.00	\$ 768,728.00	\$ 3,028,860.00	\$ 45,931.01	\$ 4,593,106.01
Depreciation	\$ 413,560.00	\$ 31,300.00	\$ 550,365.00		\$ 550,365.00		
Employee Benefit	\$ 3,063.00	\$ 6,085.00	\$ 20,767.00	\$ -	\$ 20,767.00		
Contingency	\$ -	\$ -	\$ -		\$ -		
Activities	\$ 105,875.00	\$ 118,067.00	\$ 229,204.00	\$ -	\$ 229,204.00		
School Lunch	\$ 211,193.00	\$ 248,449.00	\$ 314,516.00	\$ -	\$ 314,516.00		
Bond	\$ 74,265.00	\$ 77,775.00	\$ 75,975.00	\$ 28,113.00	\$ 80,155.00	\$ 241.75	\$ 24,174.75
Special Building	\$ 1,272,009.00	\$ 320,056.00	\$ 505,368.00		\$ 493,402.00	\$ 120.87	\$ 12,086.87
Qualified Capital Purpose Undertaking	\$ 76,350.00	\$ 117,977.00	\$ 160,403.00	\$ 77,500.00	\$ 94,308.00	\$ 1,450.45	\$ 145,045.45
Cooperative	\$ -	\$ -	\$ -	\$ -	\$ -		
Student Fee	\$ -	\$ 1,726.00	\$ 2,064.00	\$ -	\$ 2,064.00		
	\$ -	\$ -	\$ -	\$ -	\$ -		
TOTALS	\$ 7,430,913.00	\$ 6,679,220.00	\$ 8,665,969.00	\$ 874,341.00	\$ 4,813,641.00	\$ 47,744.08	\$ 4,774,413.08

Total Personal and Real Property Tax Requirement For Bonds

\$ 24,174.75

Total Personal and Real Property Tax Requirement for ALL Other

\$ 4,750,238.33

Notice of Special Hearing To Set Final Tax Request

Wakefield Public Schools (90-0560) in Wayne County County, Nebraska

PUBLIC NOTICE is hereby given, in compliance with the provisions of State Statute Section 77-1601.02, that the governing body will meet on the 14 day of September 2015 at 6:55 o'clock P. M. , at Wakefield Board of Education Room for the purpose of hearing support, opposition, criticism, suggestions or observations of taxpayers relating to setting the final tax request at a different amount than the prior year tax request.

2014/15 Budget Information

2015/16 Budget Information

Fund	2014-2015 Property Tax Request	2014 Tax Rate	Property Tax Rate (2014-2015 Request Divided By 2015 Valuation)	2015-2016 Proposed Property Tax Request	Proposed 2015 Tax Rate
General Fund	3,833,837.00	0.900427	0.800961	4,593,106.01	0.959587
Bond Fund(s) K - 12	86,014.14	0.020202	0.017970	24,174.75	0.005051
Bond Fund(s) K - 8			0.000000		0.000000
Bond Fund(s) 9 - 12			0.000000		0.000000
Bond Fund _____			0.000000		0.000000
Special Building Fund	129,024.24	0.030303	0.026956	12,086.87	0.002525
Qualified Capital Purpose Undertaking Fund K - 12	197,836.36	0.046464	0.041332	145,045.45	0.030303
Qualified Capital Purpose Undertaking Fund K - 8			0.000000		0.000000
Qualified Capital Purpose Undertaking Fund 9 - 12			0.000000		0.000000

NOTICE OF AMENDED BUDGET HEARING AND AMENDED BUDGET SUMMARY

State of Nebraska
Budget Form - NBH-School District
 Statement of Publication

Wakefield Public Schools (90-0560) in Wayne County County, Nebraska

NOTE: You need to publish both the original budget summary and the amended summary. Make sure original matches what was published if you made adjustments on the form pages

PUBLIC NOTICE is hereby given, in compliance with the provisions of State Statute Section 13-511, that the governing body will meet on the ___ day of ___, at ___ o'clock at _____ for the purpose of hearing support, opposition, criticism, suggestions or observations of taxpayers relating to amending the budget which was originally adopted on the ___ day of ___, 2015. Due to unforeseen circumstances, actual expenditures for the current fiscal year will exceed budgeted expenditures unless the current fiscal year budget of expenditures is revised. (State reasons why amending budget including dollar amount). The originally adopted budget of expenditures cannot be reduced during the remainder of the current fiscal year to meet the need for additional money because (state reasons). The budget detail is available at the office of the Clerk during regular business hours.

Clerk/Secretary

AMENDED BUDGET

FUNDS	Actual Disbursements & Transfers	Actual/Estimated Disbursements & Transfers	Budgeted Disbursements & Transfers	Necessary Cash Reserve (4)	Total Available Resources Before Property Taxes (5)	Fee and Delinquent Tax Allowance (6)	Total Personal and Real Property Tax Requirement (7)
	2013-2014 (1)	2014-2015 (2)	2015-2016 (3)				
General	\$ 5,274,598.00	\$ 5,757,785.00	\$ 6,807,307.00	\$ 768,728.00	\$ 3,028,860.00	\$ 45,931.01	\$ 4,593,106.01
Depreciation	\$ 413,560.00	\$ 31,300.00	\$ 550,365.00		\$ 550,365.00		
Employee Benefit	\$ 3,063.00	\$ 6,085.00	\$ 20,767.00	\$ -	\$ 20,767.00		
Contingency	\$ -	\$ -	\$ -		\$ -		
Activities	\$ 105,875.00	\$ 118,067.00	\$ 229,204.00	\$ -	\$ 229,204.00		
School Lunch	\$ 211,193.00	\$ 248,449.00	\$ 314,516.00	\$ -	\$ 314,516.00		
Bond	\$ 74,265.00	\$ 77,775.00	\$ 75,975.00	\$ 28,113.00	\$ 80,155.00	\$ 241.75	\$ 24,174.75
Special Building	\$ 1,272,009.00	\$ 320,056.00	\$ 505,368.00		\$ 493,402.00	\$ 120.87	\$ 12,086.87
Qualified Capital Purpose Undertaking	\$ 76,350.00	\$ 117,977.00	\$ 160,403.00	\$ 77,500.00	\$ 94,308.00	\$ 1,450.45	\$ 145,045.45
Cooperative	\$ -	\$ -	\$ -	\$ -	\$ -		
Student Fee	\$ -	\$ 1,726.00	\$ 2,064.00	\$ -	\$ 2,064.00		
	\$ -	\$ -	\$ -	\$ -	\$ -		
TOTALS	\$ 7,430,913.00	\$ 6,679,220.00	\$ 8,665,969.00	\$ 874,341.00	\$ 4,813,641.00	\$ 47,744.08	\$ 4,774,413.08

Total Personal and Real Property Tax Requirement For Bonds

\$ 24,174.75

Total Personal and Real Property Tax Requirement for ALL Other

\$ 4,750,238.33

ORIGINAL BUDGET

FUNDS	Actual Disbursements & Transfers	Actual/Estimated Disbursements & Transfers	Budgeted Disbursements & Transfers	Necessary Cash Reserve (4)	Total Available Resources Before Property Taxes (5)	Fee and Delinquent Tax Allowance (6)	Total Personal and Real Property Tax Requirement (7)
	2013-2014 (1)	2014-2015 (2)	2015-2016 (3)				
General	\$ 5,274,598.00	\$ 5,757,785.00	\$ 6,807,307.00	\$ 768,728.00	\$ 3,028,860.00	\$ 45,931.01	\$ 4,593,106.01
Depreciation	\$ 413,560.00	\$ 31,300.00	\$ 550,365.00		\$ 550,365.00		
Employee Benefit	\$ 3,063.00	\$ 6,085.00	\$ 20,767.00	\$ -	\$ 20,767.00		
Contingency	\$ -	\$ -	\$ -		\$ -		
Activities	\$ 105,875.00	\$ 118,067.00	\$ 229,204.00	\$ -	\$ 229,204.00		
School Lunch	\$ 211,193.00	\$ 248,449.00	\$ 314,516.00	\$ -	\$ 314,516.00		
Bond	\$ 74,265.00	\$ 77,775.00	\$ 75,975.00	\$ 28,113.00	\$ 80,155.00	\$ 241.75	\$ 24,174.75
Special Building	\$ 1,272,009.00	\$ 320,056.00	\$ 505,368.00		\$ 493,402.00	\$ 120.87	\$ 12,086.87
Qualified Capital Purpose Undertaking	\$ 76,350.00	\$ 117,977.00	\$ 160,403.00	\$ 77,500.00	\$ 94,308.00	\$ 1,450.45	\$ 145,045.45
Cooperative	\$ -	\$ -	\$ -	\$ -	\$ -		
Student Fee	\$ -	\$ 1,726.00	\$ 2,064.00	\$ -	\$ 2,064.00		
	\$ -	\$ -	\$ -	\$ -	\$ -		
TOTALS	\$ 7,430,913.00	\$ 6,679,220.00	\$ 8,665,969.00	\$ 874,341.00	\$ 4,813,641.00	\$ 47,744.08	\$ 4,774,413.08

Total Personal and Real Property Tax Requirement For Bonds

\$ 24,174.75

Total Personal and Real Property Tax Requirement for ALL Other

\$ 4,750,238.33

Individual Fund Pages Following This Page

These Fund Pages DO NOT need to be submitted.

THESE PAGES ARE FOR YOUR USE ONLY !

BUDGET STATEMENT AND CERTIFICATION OF TAX

County-District #

90-0560

Line No.	GENERAL FUND	Function Number	ACTUAL 9-1-2013 to 8-31-2014 (Column 1)	ACTUAL/ESTIMATED 9-1-2014 to 8-31-2015 (Column 2)	ADOPTED 9-1-2015 to 8-31-2016 (Column 3)
1	DISBURSEMENTS & TRANSFERS				
2	All Instruction Except Special Education Instructional Programs	1100	2,742,353.00	2,973,017.00	3,275,000.00
3	Special Education Instructional Programs	1200	798,730.00	809,930.00	928,338.00
4	Support Services - Pupils	2100/2150	125,094.00	159,676.00	167,377.00
5	Support Services - Staff	2200	97,736.00	104,262.00	118,954.00
6	Board of Education	2310	68,866.00	52,825.00	88,000.00
7	Executive Administration Services	2320	142,167.00	147,737.00	157,000.00
8	District Legal Services	2330	-		
9	Office of the Principal	2400	266,528.00	275,059.00	295,738.00
10	General Administration - Business Services	2510	104,321.00	116,646.00	115,000.00
11	Vehicle Acquisition & Maintenance	2520	-		
12	Maintenance and Operation of Building(s) & Site(s)	2600	496,678.00	408,383.00	450,000.00
13	Regular Pupil Transportation	2750	142,210.00	150,796.00	189,664.00
14	School Age Special Education Pupil Transportation	2760	6,449.00	7,104.00	41,094.00
15	Community Services	3000	-	-	
16	State Categorical Programs	3500	6,424.00	7,239.00	6,200.00
17	Federal Programs	4000	258,348.00	272,253.00	249,600.00
18	Debt Services	5000	-	-	-
19	Summer School	6000	694.00	4,858.00	10,000.00
20	Adult Education	7000	-		
21	Transfers to __Activity Fund	8000	18,000.00	18,000.00	35,000.00
22	Interfund Loan/Repayment to _____ Fund				
23	Trasfer to Depreciation Fund		-	250,000.00	75,000.00
24					
25	Maximize Budget Authority				605,342.00
26					
27					
28					
29					
30	Total Disbursements & Transfers (Including SPED)		5,274,598.00	5,757,785.00	
31	Total Special Education Disbursements		805,179.00	817,034.00	969,432.00
32	Total Non-Special Education Disbursements & Transfers		4,469,419.00	4,940,751.00	5,837,875.00
33	TOTAL BUDGET OF DISBURSEMENTS & TRANSFERS (Including SPED)				6,807,307.00
34	NECESSARY CASH RESERVE				768,728.00
35	TOTAL REQUIREMENTS				7,576,035.00

BUDGET STATEMENT AND CERTIFICATION OF TAX

County-District #

90-0560

Line No.	GENERAL FUND	Source Number	ACTUAL 9-1-2013 to 8-31-2014 (Column 1)	ACTUAL/ESTIMATED 9-1-2014 to 8-31-2015 (Column 2)	ADOPTED 9-1-2015 to 8-31-2016 (Column 3)
36	BEGINNING BALANCES, RECEIPTS, & TRANSFERS				
37	Cash Balance, 9-1		429,293.00	801,580.00	574,000.00
38	Investments, 9-1			-	-
39	County Treasurer's Balance, 9-1		701,992.00	430,552.00	544,989.00
40	Total Beginning Balance		1,131,285.00	1,232,132.00	1,118,989.00
41	LOCAL SOURCES				
42	Carline Tax	1115	-		
43	Public Power District Sales Tax	1120	-		
44	Motor Vehicle Taxes	1125	142,049.00	141,826.00	138,000.00
45	Tuition Received from Other Districts	1210/15/30	9,000.00	9,000.00	9,000.00
46	Tuition Received from Individuals	1220/40	-	-	
47	Other Tuition	1250/60/70	-	-	
48	Transportation Received from Other Districts	1310/30	-	-	
49	Transportation Received from Individuals	1320/40	-	-	
50	Interest	1410	474.00	969.00	900.00
51	Local License Fees/Court Fines	1610/20	1,810.00	3,927.00	3,900.00
52	Community Service Activities	1810	-	-	-
53	Other Local Receipts	1910/20/90	2,544.00	7,304.00	7,000.00
54	Nameplate Capacity Tax	3133	-		
55					
56	COUNTY AND ESU SOURCES				
57	Fines and License Fees	2110	13,054.00	14,506.00	13,000.00
58	Other County Sources	2130	-	-	
59	ESU Receipts	2210	-	-	
60					
61					
62	STATE SOURCES				
63	State Aid	3110	1,372,766.00	1,387,250.00	437,929.00
64	Special Education Programs	3120	342,962.00	389,548.00	380,000.00
65	Special Education Transportation	3125	7,610.00	7,762.00	7,000.00
66	Homestead Exemption	3130	30,625.00	29,493.00	
67	Payments for High Ability Learners	3135	4,718.00	4,947.00	4,700.00
68	Payments for Wards of the State or Court	3160/61	-	-	-
69	Pro-Rate Motor Vehicles	3180	7,497.00	8,821.00	8,100.00
70	Other State Appropriations	3145/55/ 65/75/85	-	-	

BUDGET STATEMENT AND CERTIFICATION OF TAX

County-District #

90-0560

Line No.	GENERAL FUND	Source Number	ACTUAL 9-1-2013 to 8-31-2014 (Column 1)	ACTUAL/ESTIMATED 9-1-2014 to 8-31-2015 (Column 2)	ADOPTED 9-1-2015 to 8-31-2016 (Column 3)
71	BEGINNING BALANCES, RECEIPTS, & TRANSFERS				
72	State Apportionment	3200	51,891.00	56,933.00	54,000.00
73	In-Lieu-of School Land Tax	3300			
74	State Categorical Programs	3500	5,000.00	-	1,000.00
75	Other State Receipts	3990	-	-	
76	Property Tax Credit	3131	119,198.00	89,202.00	
77	FEDERAL SOURCES				
78	Title I (Includes NCLB Title I)	4200	103,868.00	60,811.00	88,500.00
79	Innovation Education Program Strategies (Includes NCLB Title V)	4300	8,623.00	16,582.00	12,000.00
80	Title VI-B, Birth to Age 5 Special Education	4400	112,915.00	112,545.00	93,000.00
81	Medicaid in Public Schools	4450	1,092.00	3,626.00	3,000.00
82	Medicaid Administrative Activities in Public Schools	4455	33,060.00	14,497.00	12,000.00
83	Title 8 (Impact Aid)	4500	-		
84	Other Federal Non-Categorical Receipts	4600	-		
85			-		
86	Vocational Education (Carl Perkins)	4700	4,669.00	-	-
87	Other Federal Categorical Receipts ((Includes all other NCLB Programs)	4800/4900	39,588.00	78,242.00	27,000.00
88					
89	Grants from Corporations & Other Private Interests	4995	960.00	4,500.00	4,500.00
90					
91	NON-REVENUE SOURCES				
92	Tax Anticipation Notes	5150		-	
93	Long Term Loans	5200		-	
94	Insurance Adjustments	5300	500.00	13,170.00	-
95	Sale of Property	5400		-	
96	Transfers from _____ Fund	5500		-	
97	Cash Balance from Dissolved/Merged Districts	5610		-	
98	Non-Resident High School Tuition Funds	5650		-	
99	Other Non-Revenue Receipts	5690		-	605,342.00
100	Learning Community Property Taxes			-	
101	Interfund Loan/Repayment From _____ Fund				
102	Total Available Resources Before Property Taxes		3,547,758.00	3,687,593.00	3,028,860.00
103	Personal and Real Property Taxes	1110	2,958,972.00	3,189,181.00	4,547,175.00
104	TOTAL RESOURCES AVAILABLE		6,506,730.00	6,876,774.00	7,576,035.00
105	Less: Disbursements & Transfers		5,274,598.00	5,757,785.00	
106	BALANCE FORWARD		1,232,132.00	1,118,989.00	

PROPERTY TAX RECAP

1. Tax from Line 103
2. Compute County Treasurer's Commission at 1% of tax requirement.
3. Delinquent Tax Allowance (If over 5% of line 103, see instructions.)
4. Total Personal and Real Property Tax Requirement

4,547,175.00
45,931.01
4,593,106.01

Note: To present a balanced budget, TOTAL RESOURCES AVAILABLE on line 104 must agree with TOTAL REQUIREMENTS on line 35 in the Adopted Column.

BUDGET STATEMENT AND CERTIFICATION OF TAX

County-District #

90-0560

Line No.	DEPRECIATION FUND	Object/Source Number	ACTUAL 9-1-2013 to 8-31-2014 (Column 1)	ACTUAL/ESTIMATED 9-1-2014 to 8-31-2015 (Column 2)	ADOPTED 9-1-2015 to 8-31-2016 (Column 3)
1	DISBURSEMENTS & TRANSFERS				
2	Re-Appropriated Funds				
3	Capital Outlay		413,560.00		450,365.00
4	Equipment		-	31,300.00	70,000.00
5	Vehicle Acquisition				30,000.00
6					
7					
8					
9					
10					
11	Transfers to General Fund	755			
12	Total Disbursements & Transfers		413,560.00	31,300.00	
13	TOTAL BUDGET OF DISBURSEMENTS & TRANSFERS				550,365.00
14	TOTAL REQUIREMENTS				550,365.00
15	BEGINNING BALANCES, RECEIPTS, & TRANSFERS				
16	Cash Balance, 9-1		665,800.00	252,541.00	474,915.00
17	Investments, 9-1				
18	Total Beginning Balance		665,800.00	252,541.00	474,915.00
19	LOCAL SOURCES				
20	Interest	1410	301.00	174.00	450.00
21					
22	NON-REVENUE SOURCES				
23	Transfers from General Fund	5500		250,000.00	75,000.00
24	Vehicle Sale			3,500.00	
25					
26					
27	TOTAL RESOURCES AVAILABLE		666,101.00	506,215.00	550,365.00
28	Less: Disbursements & Transfers		413,560.00	31,300.00	
29	BALANCE FORWARD		252,541.00	474,915.00	

NOTE: To present a balanced budget, TOTAL RESOURCES AVAILABLE on line 27 must agree with TOTAL REQUIREMENTS on line 14 in the Adopted Column.

BUDGET STATEMENT AND CERTIFICATION OF TAX

County-District #

90-0560

Line No.	EMPLOYEE BENEFIT FUND	Object/ Source Number	ACTUAL 9-1-2013 to 8-31-2014 (Column 1)	ACTUAL/ESTIMATED 9-1-2014 to 8-31-2015 (Column 2)	ADOPTED 9-1-2015 to 8-31-2016 (Column 3)
1	DISBURSEMENTS & TRANSFERS				
2	Re-Appropriated Funds				
3	Unemployment Benefits		3,063.00	3,103.00	17,611.00
4	Purchase Services			2,982.00	3,156.00
5					
6					
7					
8					
9					
10					
11	Transfers to General Fund	755			
12	Total Disbursements & Transfers		3,063.00	6,085.00	
13	TOTAL BUDGET OF DISBURSEMENTS & TRANSFERS				20,767.00
14	NECESSARY CASH RESERVE				
15	TOTAL REQUIREMENTS				20,767.00
16	BEGINNING BALANCES, RECEIPTS, & TRANSFERS				
17	Cash Balance, 9-1		20,785.00	21,665.00	18,264.00
18	Investments, 9-1				
19	Total Beginning Balance		20,785.00	21,665.00	18,264.00
20	LOCAL SOURCES				
21	Interest	1410	4.00	4.00	3.00
22	Dual Credit Courses		3,939.00	2,680.00	2,500.00
23	NON-REVENUE SOURCES				
24	Transfers from General Fund	5500			
25					
26					
27					
28	TOTAL RESOURCES AVAILABLE		24,728.00	24,349.00	20,767.00
29	Less: Disbursements & Transfers		3,063.00	6,085.00	
30	BALANCE FORWARD		21,665.00	18,264.00	

Note: To present a balanced budget, TOTAL RESOURCES AVAILABLE on line 28 must agree with TOTAL REQUIREMENTS on line 15 in the Adopted Column.

BUDGET STATEMENT AND CERTIFICATION OF TAX

County-District #

90-0560

Line No.	CONTINGENCY FUND	Object/ Source Number	ACTUAL 9-1-2013 to 8-31-2014 (Column 1)	ACTUAL/ESTIMATED 9-1-2014 to 8-31-2015 (Column 2)	ADOPTED 9-1-2015 to 8-31-2016 (Column 3)
1	DISBURSEMENTS & TRANSFERS				
2	Legal Services	317			
3	Judgments/Settlements	643			
4					
5					
6					
7	Transfers to General Fund	755			
8	Total Disbursements & Transfers		-	-	
9	TOTAL BUDGET OF DISBURSEMENTS & TRANSFERS				-
10	TOTAL REQUIREMENTS				-
11	BEGINNING BALANCES, RECEIPTS, & TRANSFERS				
12	Cash Balance, 9-1				
13	Investments, 9-1				
14	Total Beginning Balance		-	-	-
15	LOCAL SOURCES				
16	Interest	1410			
17					
18	NON-REVENUE SOURCES				
19	Transfers from General Fund	5500			
20					
21	TOTAL RESOURCES AVAILABLE		-	-	-
22	Less: Disbursements & Transfers		-	-	
23	BALANCE FORWARD		-	-	

2014-2015 Budgeted Calculation of Maximum Total Disbursements & Transfers

$$\begin{array}{r}
 \$ \underline{\hspace{10em} 6,807,307.00} \quad \times .05 = \underline{\hspace{10em} 340,365.35} \\
 \text{(Total Budget of Disbursements \& Transfers-General Fund)} \quad \text{(Column 3, Line 9 may not exceed this amount)} \\
 \text{[From General Fund (Page 1 of 3) Line 33]}
 \end{array}$$

Note: To present a balanced budget, TOTAL RESOURCES AVAILABLE on line 21 must agree with TOTAL REQUIREMENTS on line 10 in the Adopted Column.

BUDGET STATEMENT AND CERTIFICATION OF TAX

County-District #

Line No.	ACTIVITIES FUND	Object/Source Number	ACTUAL 9-1-2013 to 8-31-2014 (Column 1)	ACTUAL/ESTIMATED 9-1-2014 to 8-31-2015 (Column 2)	ADOPTED 9-1-2015 to 8-31-2016 (Column 3)
1	DISBURSEMENTS & TRANSFERS				
2	Activities Expenses		105,875.00	118,067.00	229,204.00
3					
4					
5					
6					
7					
8					
9					
10					
11	Transfers to General Fund	755			
12	Total Disbursements & Transfers		105,875.00	118,067.00	
13	TOTAL BUDGET OF DISBURSEMENTS & TRANSFERS				229,204.00
14	NECESSARY CASH RESERVE				
15	TOTAL REQUIREMENTS				229,204.00
16	BEGINNING BALANCES, RECEIPTS, & TRANSFERS				
17	Cash Balance, 9-1		77,662.00	82,830.00	89,154.00
18	Investments, 9-1				
19	Total Beginning Balance		77,662.00	82,830.00	89,154.00
20	LOCAL SOURCES				
21	Interest	1410	45.00	58.00	50.00
22	Activities Receipts	1710	92,998.00	106,333.00	105,000.00
23					
24					
25	NON-REVENUE SOURCES				
26	Transfers from General Fund	5500	18,000.00	18,000.00	35,000.00
27					
28	TOTAL RESOURCES AVAILABLE		188,705.00	207,221.00	229,204.00
29	Less: Disbursements & Transfers		105,875.00	118,067.00	
30	BALANCE FORWARD		82,830.00	89,154.00	

NOTE: To present a balanced budget, TOTAL RESOURCES AVAILABLE on line 28 must agree with TOTAL REQUIREMENTS on line 15 in the Adopted Column.

BUDGET STATEMENT AND CERTIFICATION OF TAX

County-District #

90-0560

Line No.	SCHOOL LUNCH FUND	Object/ Source Number	ACTUAL 9-1-2013 to 8-31-2014 (Column 1)	ACTUAL/ESTIMATED 9-1-2014 to 8-31-2015 (Column 2)	ADOPTED 9-1-2015 to 8-31-2016 (Column 3)
1	DISBURSEMENTS & TRANSFERS				
2	Salaries	100	55,987.00	57,029.00	62,000.00
3	Employee Benefits	200	24,177.00	27,168.00	32,000.00
4	Purchased Services	300	4,593.00	7,144.00	20,000.00
5	Supplies & Materials (Excluding Food)	400	3,558.00	5,823.00	12,000.00
6	Food	470	122,263.00	137,863.00	167,516.00
7	Capital Outlay (New & Replacement)	500		12,560.00	20,000.00
8					
9	Other Expenses		615.00	862.00	1,000.00
10					
11	Transfers to General Fund	755			
12	Total Disbursements & Transfers		211,193.00	248,449.00	
13	TOTAL BUDGET OF DISBURSEMENTS & TRANSFERS				314,516.00
14	NECESSARY CASH RESERVE				
15	TOTAL REQUIREMENTS				314,516.00
16	BEGINNING BALANCES, RECEIPTS, & TRANSFERS				
17	Cash Balance, 9-1		60,009.00	83,443.00	71,481.00
18	Investments, 9-1				
19	Total Beginning Balance		60,009.00	83,443.00	71,481.00
20	LOCAL SOURCES				
21	Interest	1410	28.00	46.00	35.00
22	Sale of Lunches/Milk	1720	87,548.00	80,000.00	87,000.00
23					
24	STATE SOURCES				
25	State Reimbursement	3150	2,254.00	1,777.00	2,000.00
26					
27	FEDERAL SOURCES				
28	Federal Reimbursement	4800	144,797.00	154,664.00	154,000.00
29					
30	NON-REVENUE SOURCES				
31	Transfers from General Fund	5500			-
32					
33	TOTAL RESOURCES AVAILABLE		294,636.00	319,930.00	314,516.00
34	Less: Disbursements & Transfers		211,193.00	248,449.00	
35	BALANCE FORWARD		83,443.00	71,481.00	

NOTE: To present a balanced budget, TOTAL RESOURCES AVAILABLE on line 33 must agree with TOTAL REQUIREMENTS on line 15 in the Adopted Column.

School Lunch Fund

BUDGET STATEMENT AND CERTIFICATION OF TAX

County-District #

90-0560

Line No.	BOND FUND	Object/Source Number	ACTUAL 9-1-2013 to 8-31-2014 (Column 1)	ACTUAL/ESTIMATED 9-1-2014 to 8-31-2015 (Column 2)	ADOPTED 9-1-2015 to 8-31-2016 (Column 3)
1	DISBURSEMENTS & TRANSFERS				
2	Bond - Refunded	610			
3	Bond - Principal	610	70,000.00	75,000.00	75,000.00
4	Bond - Interest	620	4,265.00	2,775.00	975.00
5					
6	Transfers to General Fund	755			
7	Interfund Loan/Repayment To _____ Fund				
8	Total Disbursements & Transfers		74,265.00	77,775.00	
9	TOTAL BUDGET OF DISBURSEMENTS & TRANSFERS				75,975.00
10	NECESSARY CASH RESERVE				28,113.00
11	TOTAL REQUIREMENTS				104,088.00
12	BEGINNING BALANCES, RECEIPTS, & TRANSFERS				
13	Cash Balance, 9-1		54,639.00	58,226.00	62,135.00
14	Investments, 9-1		-		
15	County Treasurers Balance, 9-1		18,624.00	16,885.00	18,000.00
16	Total Beginning Balance		73,263.00	75,111.00	80,135.00
17	LOCAL SOURCES				
18	Carline Tax	1115			
19	Interest	1410	16.00	24.00	20.00
20					
21					
22	STATE SOURCES				
23	Homestead Exemption	3130	749.00	662.00	
24	Pro-Rate Motor Vehicle	3180	208.00	200.00	-
25	In-Lieu-Of School Land Tax	3300			
26	Property Tax Credit		2,866.00	2,001.00	
27	NON-REVENUE SOURCES				
28	Sales of Bonds (Re-funding)	5100	-		
29	Transfers from General Fund	5500	-		
30					
31	Interfund Loan/Repayment From _____ Fund		-		
32	Total Available Resources Before Property Taxes		77,102.00	77,998.00	80,155.00
33	Personal and Real Property Taxes	1110	72,274.00	79,912.00	23,933.00
34	TOTAL RESOURCES AVAILABLE		149,376.00	157,910.00	104,088.00
35	Less: Disbursements & Transfers		74,265.00	77,775.00	
36	BALANCE FORWARD		75,111.00	80,135.00	

PROPERTY TAX RECAP

1. Tax From Line 33	23,933.00
2. Compute County Treasurer's Commission at 1% of tax requirement.	241.75
3. Delinquent Tax Allowance (If over 5% of line 33, see instructions.)	
4. Total Personal and Real Property Tax Requirement.	24,174.75

Note: To present a balanced budget, TOTAL RESOURCES AVAILABLE on line 34 must agree with TOTAL REQUIREMENTS on line 11 in the Adopted Column.

Bond Fund

School District Total Debt Outstanding as of September 1, 2015

The district officers of any school district in Nebraska shall have power, on the terms and conditions set forth in sections 10-702 to 10-716, to issue the bonds of the district for the purpose of (1) purchasing a site for and erecting thereon a schoolhouse or schoolhouses or a teacherage or teacherages, or for such purchase or erection, or purchasing an existing building or buildings for use as a schoolhouse or schoolhouses, including the site or sites upon which such building or buildings are located, and furnishing the same, in such district, (2) retiring registered warrants, and (3) paying for additions to or repairs for a schoolhouse or schoolhouses or a teacherage or teacherages.

School districts also have the ability to issue bonds as set forth in State Statute Section 79-10,110 for the purpose of paying amounts necessary for the abatement of environmental hazards, accessibility barrier elimination, or modifications for life safety code violations, indoor air quality, or mold abatement and prevention.

The District has the following debt outstanding as of September 1, 2015:
(Include Bond fund(s) and Qualified Capital Purpose Undertaking Fund)

<u>Fiscal Year</u>	<u>Principal</u>	<u>Interest</u>	<u>Total</u>
2015-2016	\$ 182,737.00	\$ 11,214.00	\$ 193,951.00
2016-2017	\$ 108,804.00	\$ 9,172.00	\$ 117,976.00
2017-2018	\$ 109,933.00	\$ 8,043.00	\$ 117,976.00
2018-2019 and thereafter	\$ 683,390.00	\$ 24,468.00	\$ 707,858.00
Total All Years	\$ 1,084,864.00	\$ 52,897.00	\$ 1,137,761.00

BUDGET STATEMENT AND CERTIFICATION OF TAX

County-District #

90-0560

Line No.	SPECIAL BUILDING FUND	Object/Source Number	ACTUAL 9-1-2013 to 8-31-2014 (Column 1)	ACTUAL/ESTIMATED 9-1-2014 to 8-31-2015 (Column 2)	ADOPTED 9-1-2015 to 8-31-2016 (Column 3)
1	DISBURSEMENTS & TRANSFERS				
2	Purchased Services	300			
3	Capital Outlay (New Only)	500	1,272,009.00	308,240.00	316,236.00
4	Site Acquisition & Improvements	510	-		
5	Building Acquisition & Improvement	520		11,816.00	189,132.00
6					
7	Loan Repayment	610/620			
8	Transfers to General Fund	755			
9	Interfund Loan/Repayment To _____ Fund				
10	Total Disbursements & Transfers		1,272,009.00	320,056.00	
11	TOTAL BUDGET OF DISBURSEMENTS & TRANSFERS				505,368.00
12	TOTAL REQUIREMENTS				505,368.00
13	BEGINNING BALANCES & RECEIPTS				
14	Cash Balance, 9-1		628,237.00	666,697.00	472,992.00
15	Investments, 9-1				
16	County Treasurer's Balance, 9-1		43,522.00	21,842.00	20,000.00
17	Total Beginning Balance		671,759.00	688,539.00	492,992.00
18	LOCAL SOURCES				
19	Carline Tax	1115	-		
20	Interest	1410	459.00	412.00	410.00
21					
22					
23	STATE SOURCES				
24	Homestead Exemption	3130	1,651.00	950.00	
25	Pro-Rate Motor Vehicles	3180	465.00	305.00	
26	In-Lieu-Of School Land Tax	3300			
27	Property Tax Credit		6,232.00	3,002.00	
28	FEDERAL SOURCES				
29	Total Federal Receipts	4000	-		
30	NON-REVENUE SOURCES				
31	Sale of Bonds	5100			
32	Long Term Loans	5200	1,121,920.00	-	
33	Sale of Property	5400			
34	Learning Community Property Taxes				
35	Interfund Loan/Repayment From _____ Fund				
36	Total Available Resources Before Property Taxes		1,802,486.00	693,208.00	493,402.00
37	Personal and Real Property Taxes	1110	158,062.00	119,840.00	11,966.00
38	TOTAL RESOURCES AVAILABLE		1,960,548.00	813,048.00	505,368.00
39	Less: Disbursements & Transfers		1,272,009.00	320,056.00	
40	BALANCE FORWARD		688,539.00	492,992.00	

PROPERTY TAX RECAP

1. Tax From Line 37
2. Compute County Treasurer's Commission at 1% of tax requirement.
3. Delinquent Tax Allowance (If over 5% of Line 37, see instructions.)
4. Total Personal and Real Property Tax Requirement.

11,966.00
120.87
12,086.87

Note: To present a balanced budget, TOTAL RESOURCES AVAILABLE on line 38 must agree with TOTAL REQUIREMENTS on line 12 in the Adopted Column.

Special Building Fund

BUDGET STATEMENT AND CERTIFICATION OF TAX

County-District # **90-0560**

Line No.	QUALIFIED CAPITAL PURPOSE UNDERTAKING FUND	Object/Source Number	ACTUAL 9-1-2013 to 8-31-2014 (Column 1)	ACTUAL/ESTIMATED 9-1-2014 to 8-31-2015 (Column 2)	ADOPTED 9-1-2015 to 8-31-2016 (Column 3)
1	DISBURSEMENTS & TRANSFERS				
2	Building & Site Improvement	520			
3	Bond - Refunded	610			
4	Bond - Principal	610	75,000.00	112,055.00	150,164.00
	Bond - Interest	620	1,350.00	5,922.00	10,239.00
6	Transfers to General Fund	755			
7	Interfund Loan/Repayment To _____ Fund				
8	Total Disbursements & Transfers		76,350.00	117,977.00	
9	TOTAL BUDGET OF DISBURSEMENTS & TRANSFERS				160,403.00
10	NECESSARY CASH RESERVE				77,500.00
11	TOTAL REQUIREMENTS				237,903.00
12	BEGINNING BALANCES & RECEIPTS				
13	Cash Balance, 9-1		51,036.00	44,403.00	74,970.00
14	Investments, 9-1				
15	County Treasurers Balance, 9-1		19,454.00	20,000.00	19,313.00
16	Total Beginning Balance		70,490.00	64,403.00	94,283.00
17	LOCAL SOURCES				
18	Carline Tax	1115	-		
18	Interest	1410	10.00	26.00	25.00
20					
21	STATE SOURCES				
22	Homestead Exemption	3130	702.00	1,522.00	
23	Pro-Rate Motor Vehicle	3180	200.00	416.00	-
24	In-Lieu-Of School Land Tax	3300			
25	Property Tax Credit		2,618.00	4,603.00	
26	FEDERAL SOURCES				
27	Total Federal Receipts	4000		-	-
28	NON-REVENUE SOURCES				
29	Qualified School Construction Bonds	5100		-	
30	Long Term Loans	5200		-	
31	Interfund Loan/Repayment From _____ Fund			-	
32	Total Available Resources Before Property Taxes		74,020.00	70,970.00	94,308.00
33	Personal and Real Property Taxes	1110	66,733.00	141,290.00	143,595.00
34	TOTAL RESOURCES AVAILABLE		140,753.00	212,260.00	237,903.00
35	Less: Disbursements & Transfers		76,350.00	117,977.00	
36	BALANCE FORWARD		64,403.00	94,283.00	

PROPERTY TAX RECAP

1. Tax From Line 33	143,595.00
2. Compute County Treasurer's Commission at 1% of tax requirement.	1,450.45
3. Delinquent Tax Allowance (If over 5% of line 33, see instructions.)	
4. Total Personal and Real Property Tax Requirement.	145,045.45

Note: To present a balanced budget, TOTAL RESOURCES AVAILABLE on line 34 must agree with TOTAL REQUIREMENTS on line 11 in the Adopted Column.

Qualified Capital Purpose Undertaking Fund

BUDGET STATEMENT AND CERTIFICATION OF TAX

County-District #

90-0560

Line No.	COOPERATIVE FUND	Function/Source Number	ACTUAL 9-1-2013 to 8-31-2014 (Column 1)	ACTUAL/ESTIMATED 9-1-2014 to 8-31-2015 (Column 2)	ADOPTED 9-1-2015 to 8-31-2016 (Column 3)
1	DISBURSEMENTS				
2	All Instruction	1100/1200			
3	Support Services - Pupils	2100/2150			
4	Support Services - Staff	2200			
5	Executive Administration Services	2320			
6	Office of the Principal	2400			
7	General Administration - Business Services	2510			
8	Community Services	3000			
9	State Categorical Programs	3500			
10	Federal Programs	4000			
11	Summer School	6000			
12	Adult Education	7000			
13					
14	Total Disbursements		-	-	
15	TOTAL BUDGET OF DISBURSEMENTS				-
16	NECESSARY CASH RESERVE				
17	TOTAL REQUIREMENTS				-
18	BEGINNING BALANCES, RECEIPTS, & TRANSFERS				
19	Cash Balance, 9-1				
20	Investments, 9-1				
21	Total Beginning Balance		-	-	-
22	LOCAL SOURCES				
23	Tuition Received from Districts	1210/30			
24					
25	STATE SOURCES				
26	State Non-Categorical Programs	3100			
27	State Categorical Programs	3500			
28					
29	FEDERAL SOURCES				
30	Federal Programs	4000			
31					
32					
33	NON-REVENUE SOURCES				
34	Transfers from General Fund	5500			
35					
36	TOTAL RESOURCES AVAILABLE		-	-	-
37	Less: Disbursements		-	-	
38	BALANCE FORWARD		-	-	

NOTE: Pages should only be filled out by the school acting as the fiscal agent for the Cooperative. All schools show payment for services in the General Fund.

Note: To present a balanced budget, TOTAL RESOURCES AVAILABLE on line 36 must agree with TOTAL REQUIREMENTS on line 17 in the Adopted Column.

Cooperative Fund

BUDGET STATEMENT AND CERTIFICATION OF TAX

County-District #

90-0560

Line No.	STUDENT FEE FUND	Function/ Source Number	ACTUAL 9-1-2013 to 8-31-2014 (Column 1)	ACTUAL/ESTIMATED 9-1-2014 to 8-31-2015 (Column 2)	ADOPTED 9-1-2015 to 8-31-2016 (Column 3)
1	DISBURSEMENTS				
2	Extracurricular Activities Fees			1,726.00	2,064.00
3	Postsecondary Education Fees				
4	Summer or Night School Fees				
5					
6					
7					
8					
9					
10					
11					
12					
13					
14	Total Disbursements		-	1,726.00	
15	TOTAL BUDGET OF DISBURSEMENTS				2,064.00
16	NECESSARY CASH RESERVE				
17	TOTAL REQUIREMENTS				2,064.00
18	BEGINNING BALANCES & RECEIPTS				
19	Cash Balance, 9-1		240.00	240.00	264.00
20	Investments, 9-1				
21	Total Beginning Balance		240.00	240.00	264.00
22	LOCAL SOURCES				
23	Interest	1410			
24	Extracurricular Activities Fees	1741		1,750.00	1,800.00
25	Postsecondary Education Fees	1742			
26	Summer or Night School Fees	1743			
27					
28					
29					
30	NON-REVENUE SOURCES				
31					
32					
33					
34	TOTAL RESOURCES AVAILABLE		240.00	1,990.00	2,064.00
35	Less: Disbursements		-	1,726.00	
36	BALANCE FORWARD		240.00	264.00	

Note: To present a balanced budget, TOTAL RESOURCES AVAILABLE on line 34 must agree with TOTAL REQUIREMENTS on line 17 in the Adopted Column.

Notice of Special Hearing To Set Final Tax Request

Wakefield Public Schools (90-0560) in Wayne County County, Nebraska

PUBLIC NOTICE is hereby given, in compliance with the provisions of State Statute Section 77-1601.02, that the governing body will meet on the 14 day of September 2015 at 6:55 o'clock P. M. , at Wakefield Board of Education Room for the purpose of hearing support, opposition, criticism, suggestions or observations of taxpayers relating to setting the final tax request at a different amount than the prior year tax request.

2014/15 Budget Information

2015/16 Budget Information

Fund	2014-2015 Property Tax Request	2014 Tax Rate	Property Tax Rate (2014-2015 Request Divided By 2015 Valuation)	2015-2016 Proposed Property Tax Request	Proposed 2015 Tax Rate
General Fund	3,833,837.00	0.900427	0.800961	4,593,106.01	0.959587
Bond Fund(s) K - 12	86,014.14	0.020202	0.017970	24,174.75	0.005051
Bond Fund(s) K - 8			0.000000		0.000000
Bond Fund(s) 9 - 12			0.000000		0.000000
Bond Fund _____			0.000000		0.000000
Special Building Fund	129,024.24	0.030303	0.026956	12,086.87	0.002525
Qualified Capital Purpose Undertaking Fund K - 12	197,836.36	0.046464	0.041332	145,045.45	0.030303
Qualified Capital Purpose Undertaking Fund K - 8			0.000000		0.000000
Qualified Capital Purpose Undertaking Fund 9 - 12			0.000000		0.000000

September 8, 2015

Wakefield Community Schools

Board of Education

Wakefield, NE 68784

Dear Negotiations Committee:

The Wakefield Education Association requests that the school board of Wakefield Community Schools take action to recognize Wakefield Education Association as the exclusive bargaining agent for the district's non-supervisory certificated staff for the 2017-2018 contract year.

Please direct your response to the undersigned.

Sincerely,

A handwritten signature in cursive script that reads "Jaime Manz". The signature is written in black ink and is positioned above the printed name.

Jaime Manz

President, Wakefield Education Association

Extracurricular Drug Testing Program (PROPOSED POLICY)

The school district supports and values student participation in extracurricular activities, but such participation in school district extracurricular activities is a privilege and not a right. Students in all extracurricular activities in grades 7-12 shall be subject to mandatory and random testing for the presence of alcohol or illegal drugs. Consequences will include suspension from activities for a specified number of school days. In the case in which the school year comes to an end before the activity suspension has expired, the consequence will carry over to the following school year.

1. Purpose of Random Drug Testing

- a.** The school district has recognized that observed and suspected drug and alcohol use and abuse has increased among the student population, including students participating in extracurricular activities.
- b.** The school district seeks to provide safe, drug-free schools.
- c.** The school district seeks to deter the use of illegal and prohibited drugs and alcohol among students.
- d.** The school district recognizes that students who use illegal and prohibited drugs pose a threat to the health and safety of themselves, other students, teachers, administrators, and other persons.
- e.** The school district finds that the drug and alcohol problem among the student body will be effectively addressed by making sure that the large number of students participating in extracurricular activities do not use drugs and alcohol.

2. Notice. Each student who participates or seeks to participate in extracurricular activities shall be given a copy of this policy. This policy may also be included in the student handbook.

3. Drug Testing Coordinator. The Drug Testing Coordinator shall be the Superintendent or his or her designee unless otherwise indicated.

4. Extracurricular Activities. This policy applies to any activity that meets

the guidelines of an extracurricular activity at the school district which includes but is not necessarily limited to the following:

Art Club, Basketball, District Music Contest Participants, FBLA, FCCLA, FFA, Football, Golf, NHS, Pep Band, Quiz Bowl, Speech Team, Student Council, Swing Choir, Track, Volleyball, Wrestling.

5. For testing purposes, an emphasis will be placed on activities that are currently “in-season” but the district may draw from the roster of other “out-of-season” activities as well.

6. **Students Who Are Required to Submit to Drug Testing**

- a. **Grades.** All students in grades 7-12 who participate in any extracurricular activity or competition are part of the pool subject to random drug testing.
 - b. **Consent.** A student and his or her parent(s)/guardian(s) must sign a consent form before the student shall be eligible to try out for, practice with, or participate in the extracurricular activity. The consent form is attached to this policy.
 - c. **Selection Pool Eligibility.** Students shall remain in the selection pool for an entire school year from the date the consent form is received by the school district except that students who quit during the season or activity (prior to being selected for testing) or students who are cut from an activity will be removed from the testing pool.
 - d. **Withdrawal.** Students who have a consent form on file remain eligible for drug tests from the date the consent form is received by the school district and throughout the remainder of the school year or until the student files a Withdrawal of Student from Activity form signed by the student and his or her parent(s)/guardian(s). Upon withdrawal, the student shall not be eligible to participate in any activity that is subject to drug testing for 90 school days. A student who files a Withdrawal of Student from Activity form after selected for a random drug test but before submitting to the test or after testing positive shall be ineligible to participate in any extracurricular activities for 90 school days from the date the Withdrawal of Student from Activity form is received by the Drug Testing Coordinator.
7. **Drugs.** Students participating in extracurricular activities are prohibited from using, possessing, distributing, manufacturing, or having drugs

present in their system. “Drugs” means:

- a. Any substance considered illegal by the Uniform Controlled Substances Act, Neb. Rev. Stat. § 28-401 *et seq.*
- b. Any substance which is controlled by the Food and Drug Administration unless prescribed to the student by any licensed medical practitioner authorized to prescribe controlled substances or other prescription drugs;
- c. Alcohol for any student under the age of 21. Alcohol shall have the meaning as provided in NEB. REV. STAT. § 48-1902(1).

8. Testing Procedures

- a. **Student Selection.** All students who participate in extracurricular activities and submit a consent form will be included in a master list and will be subject to random drug screening. The master list shall be submitted to the company employed by the district to conduct the testing.
- b. **Reasonable Suspicion Testing.** In addition to random drug testing, a student is subject to drug testing at any time when the Drug Testing Coordinator determines there is individualized reasonable suspicion based upon articulable facts to believe that the student has used a drug. The Drug Testing Coordinator will notify the student and take the necessary steps to schedule a test as soon as practicable.
- c. **Parental Request.** Students who do not participate in extracurricular activities may be added to the random drug screening master list upon parental request. Parent(s)/guardians may also request that their student be subject to non-random drug screening. The school will arrange for the test as soon as practicable. The parent(s)/guardian(s) making a request under this subparagraph must submit a signed consent form and indicate which type of test is being requested. Any cost associated with tests administered as a result of parental request must be paid by the parent(s)/guardian(s) in advance of the test.
- d. **Type of Test.** The school district reserves the right to utilize breath, saliva, hair or urinalysis testing procedures. Urine and oral fluid samples which screen positive will be confirmed by GC/MS. Positive

saliva or breath alcohol tests will be confirmed by EBT (Evidential Breath Tester).

- e. **Collection Site.** The Drug Testing Coordinator will designate the collection site at which student will provide specimens. The collection site may be off the premises of the school district.
- f. **Collection Procedures.** The school board will select a Drug Program Administrator (DPA). The DPA shall randomly select the students subject to drug testing from the master list. The DPA will maintain and follow generally accepted industry standards for collecting, maintaining, shipping, and accessing all specimens. The DPA will seek to obtain the sample in a manner designed to insure accurate testing protocols while minimizing intrusion into a student's privacy. The DPA and the school district will provide a copy of the collection procedures upon request.
- g. **Drugs.** Students may be randomly tested for any drugs, including but not limited to alcohol, amphetamines, barbiturates, benzodiazepines, cocaine, methamphetamines, marijuana, opiates, phencyclidine.
- h. **Results.** The DPA shall notify the student and the Drug Testing Coordinator of any positive test after the initial screening. The school representative shall notify the student's parents. The DPA will use a secure method to transmit all positive test results to the DPA's Medical Review Officer (MRO). The MRO will be certified by an MRO accreditation body. The MRO will be responsible for reviewing test results and determining whether the use of a substance identified by the sample analysis is from illicit use or a legitimate medical use. Prior to making a final decision, the MRO or his or her assistant shall contact the student and his or parent(s)/guardian(s) to discuss the result either face-to-face or over the telephone. If the MRO determines the test results are negative, no further action shall be taken against the student. The MRO will report results of verified positives to the DPA. The DPA shall then notify the Drug Testing Coordinator of the positive test result. The Drug Testing Coordinator shall notify the student and his or her parent(s)/guardian(s) and any staff members responsible for implementing the consequences of this policy.
- i. **Request for a Retest.** A positive test will be saved by the MRO, with the exception of alcohol testing. A positive alcohol test will be

confirmed with an EBT device. A student's parent(s)/guardian(s) may request that the specimen be tested at a second nationally certified laboratory from a list provided by the MRO. The request for the test must be submitted in writing to the MRO (with a copy sent to the Drug Testing Coordinator) within 72 hours of being notified of the final testing result. The student and his or her parent(s)/guardian(s) must pay the associated costs for an additional test in advance. The costs will be reimbursed if the result of the split sample test is negative. The student will remain subject to the consequences of this policy during the retesting procedure.

9. **Negative Tests.** Students and their parents will receive verbal or written notice when the student's test result is negative.

10. **Consequences for Testing Positive.** Whenever the test results indicate the presence of drugs, Drug Testing Coordinator shall schedule and hold a confidential meeting with the student, parent/guardian, and sponsor/coach. Other members of the school's administration may also attend the meeting. At the meeting, the Drug Testing Coordinator shall explain the drug testing procedures and the policy of the district. The consequences shall be as follows. **At the end of each consequence period, the student must submit another test and the test must be negative before becoming eligible again.** All offenses are cumulative in grades 7-8. Offenses that occur in grades 7-8 shall not count as offenses in grades 9-12. All offenses are cumulative in grades 9-12:
 - a. **First Offense**
 - i. The student may be required to attend practice.
 - ii. If the student admits being guilty of a violation of the drug policy upon having their name called for random testing, but before submitting the test, this will be considered "self-reporting." The student will be ineligible to publicly perform in any extracurricular activity for 20 school days. The day of the admission of guilt shall be the first day for counting purposes.
 - iii. If student does not admit guilt prior to a positive test, the student will be ineligible to publicly perform in any extracurricular activity for 30 school days. The day of the positive test result shall be the first day for counting purposes.

b. Second Offense

- i. The student may be required to attend practice.
- ii. The student will be ineligible to publicly perform in any extracurricular activity for 60 school days. The day of the positive test result shall be the first day for counting purposes.
- iii. The student must appear before the Board of Education at a regularly scheduled meeting and formally request reinstatement into the extra-curricular activities program.

c. Third and Subsequent Offenses

- i. The student will be ineligible to publicly perform in any extracurricular activity for 180 school days. The day of the positive test result shall be the first day for counting purposes.
- ii. The student shall obtain a drug/alcohol counseling evaluation and follow said recommendations, at parents' expense.
- iii. The student must appear before the Board of Education at a regularly scheduled meeting and formally request reinstatement into the extra-curricular activities program.
- iv. The student must attend drug/alcohol counseling...

11. Refusal to Test

A student who refuses to submit to a drug test authorized under this policy, or fails or refuses to comply with any other provision of this policy, shall be deemed to have submitted a positive test.

12. Tampering

Tampering is the use of any agent or technique which is designed to avoid detection of a drug and/or compromise the integrity of a drug test and is prohibited. This includes providing false urine samples (for example, urine substitution), contaminating the urine sample with chemicals or chemical products, the use of diuretics to dilute urine samples, and the use of masking. If the Drug Testing Coordinator determines that a student

tampered with a drug test, the student shall not be eligible to participate in any activities covered under this policy including all meetings, practices, performances and competitions for 180 school days.

The use of any such agent or technique shall be treated as a positive test for drugs prohibited by this Policy and shall be subject to the penalties set forth in Section 9 of this Policy.

13. Maintenance of Records

All results of drug testing shall be confidential. Procedures for maintaining confidentiality will be developed by the school district and the testing organization. The Drug Testing Coordinator shall maintain records of positive tests in a secure location. This information will not be available to anyone other than appropriate school personnel and parents. This information will be destroyed upon the student's graduation or one year after the student's class graduates. Under no circumstances will this information become a part of the student's permanent file, nor will it be sent to another school when the student moves to another district or transfers to another school. The school district will not share drug testing results with any law enforcement agencies.

14. Appeal.

A student participating in extracurricular activities who has been determined by school district officials to be in violation of this policy shall have the right to appeal the decision to the Superintendent or his/her designee(s). The request for a review must be submitted to the Superintendent in writing within five (5) school days of notice of the positive test. A student requesting a review will be deemed ineligible to participate in any extracurricular activities until the review is completed. The Superintendent or his/her designee(s) shall then determine whether the original finding was justified. No further review of the Superintendent's decision will be provided, and his/her decision shall be final in all respects. Any necessary interpretation or application of this policy shall be in the sole and exclusive judgment and discretion of the Superintendent which shall be final and non-appealable.

15. Severability

If any portion of this policy is deemed to be contrary to the law of the state of Nebraska or the United States by judicial decision or an act of Congress, then only such portion or provision directly deemed to be unconstitutional shall be stricken, and the remainder of the policy shall remain in full force.

WAKEFIELD COMMUNITY SCHOOL

802 HIGHLAND

PO BOX 330

WAKEFIELD, NE 68784-0330

Mark Bejot, Superintendent
Jerad Wulf, Principal K-6
Jason Heitz, Principal 7-12

mbejot@esu1.org
jwulf@esu1.org
jheitz@esu1.org

Phone: 402-287-2012 (HS) 402-287-9892 (Elem)
<http://www.wakefieldschools.org>

FAX: 402-287-2014

CONSENT TO PERFORM RANDOM DRUG TESTING 2015-2016

Student Name _____ Grade _____

As a student and parent:

- < We understand and agree that participation in extracurricular activities is a privilege that may be withdrawn for violations of the Extracurricular Drug Testing Policy.
- < We have read the Extracurricular Drug Testing Policy and understand the responsibilities and consequences as an activity participant if the student violates the policy.
- < We understand that when students participate in any extracurricular activity, they will be subjected to random drug testing, and if they refuse, will not be allowed to practice or participate in any extracurricular activity. We have read this consent statement and agree to its terms.
- < We understand this is binding while a student is enrolled in Wakefield Community School District.

CONSENT TO PERFORM DRUG TESTING

We hereby consent to allow the student named on this form to undergo drug testing for the presence of drugs and alcohol in accordance with the Extracurricular Drug Testing Program adopted by the Board of Education. We understand that any samples will be sent only to a qualified laboratory for actual testing. We hereby give our consent to the medical vendor selected by the school board, their Medical Review Office (MRO), laboratory, doctors, employees, or agents, together with any clinic, hospital, or laboratory designated by the selected medical vendor to perform testing for the detection of drugs and to release the results of those tests as provided in the policy. We understand these results will be forwarded to school district officials and will also be made available to us. We agree to sign any necessary releases if requested to do so.

We understand that consent pursuant to this Consent to Perform Random Drug Testing will be effective for all extracurricular activities in which this student might participate during the current school year.

We hereby release the Wakefield Community School Board of Education and its employees from any legal responsibility or liability for the release of such information and records, pursuant to the policy.

Student Signature _____ Date _____

Parent/Guardian Signature _____ Date _____

WAKEFIELD COMMUNITY SCHOOL

802 HIGHLAND

PO BOX 330

WAKEFIELD, NE 68784-0330

Mark Bejot, Superintendent
Jerad Wulf, Principal K-6
Jason Heitz, Principal 7-12

mbejot@esu1.org
jwulf@esu1.org
jheitz@esu1.org

Phone: 402-287-2012 (HS) 402-287-9892 (Elem)
<http://www.wakefieldschools.org>

FAX: 402-287-2014

WITHDRAWAL OF STUDENT FROM ACTIVITY 2015-16 SCHOOL YEAR

I understand that by signing this form I am rescinding my permission for random drug screening and no longer wish to participate in any extracurricular activity. I further understand that I am forfeiting my privilege to participate in athletics and/or extracurricular activities for the remainder of this school year.

I hereby rescind my consent to the administration of the drug screening and forfeit all participation in extracurricular activities for the remainder of the school year at the school district.

Student's Printed Name: _____

Signature: _____ Date: _____

Parent/Guardian's Printed Name: _____

Signature: _____ Date: _____