

ESUCC  
Legislative Committee Meeting  
Tuesday, May 6, 2014, 11:30 AM  
Educational Service Unit No. 10 76 Plaza Blvd Kearney, NE 68845, 6949 South 110th Street,  
LaVista, NE 68128

Attendance Taken at 11:35 AM.

Beatty ESU 16:	Present
Bell ESU 10:	Present
David Ludwig:	Present
Gil Kettelhut:	Present
Dr Kraig Lofquist:	Absent
Shoemake ESU 06:	Present
Standish ESU 18:	Absent

1. Call to Order

2. Roll Call

3. Information Item

3.1. ESUCC Position Statement

3.2. Action Plans

3.3. LB1103

3.4. Core Funding

4. Recommended Actions Items

5. Next Meeting Agenda Items

6. Adjournment

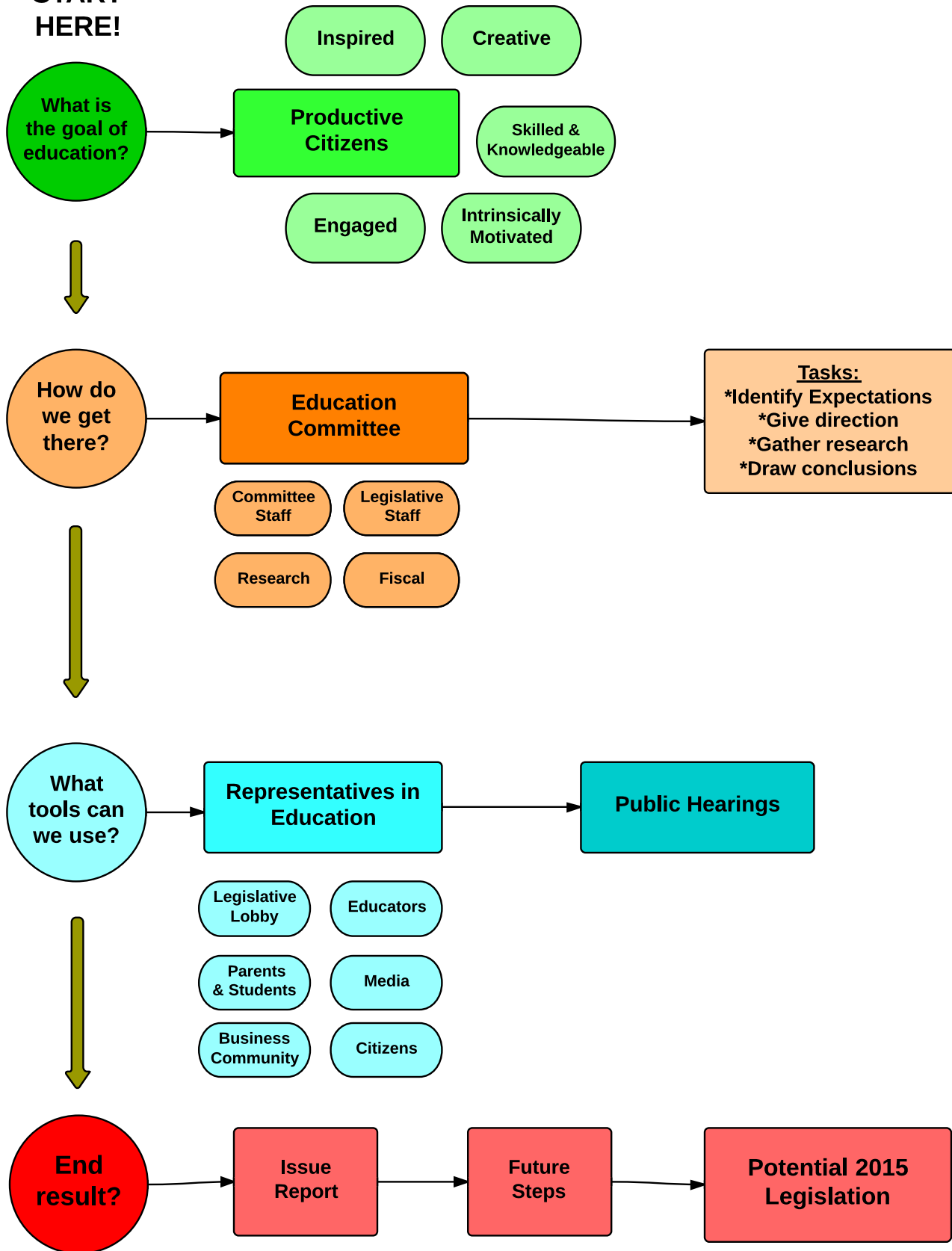
{{Name: Agenda Item Name}}  
{{Discussion: Agenda Item Discussion}}  
{{Comments: Agenda Item Comments}}  
{{Actions: Agenda Item Actions}}

# Nebraska Vision for Education Roadmap

Third Draft for Education Committee - April 9, 2014

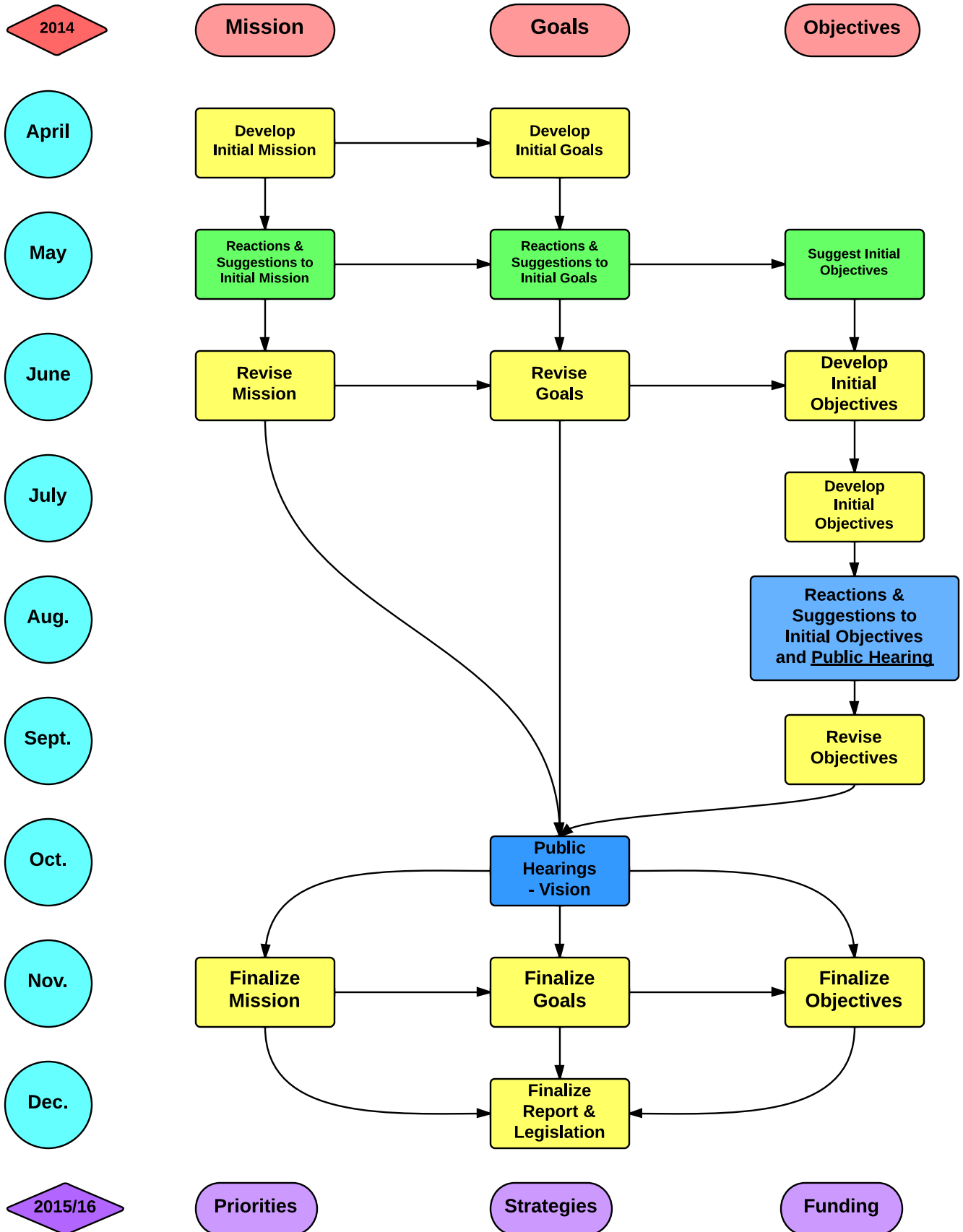
Nebraska Legislature

**START  
HERE!**

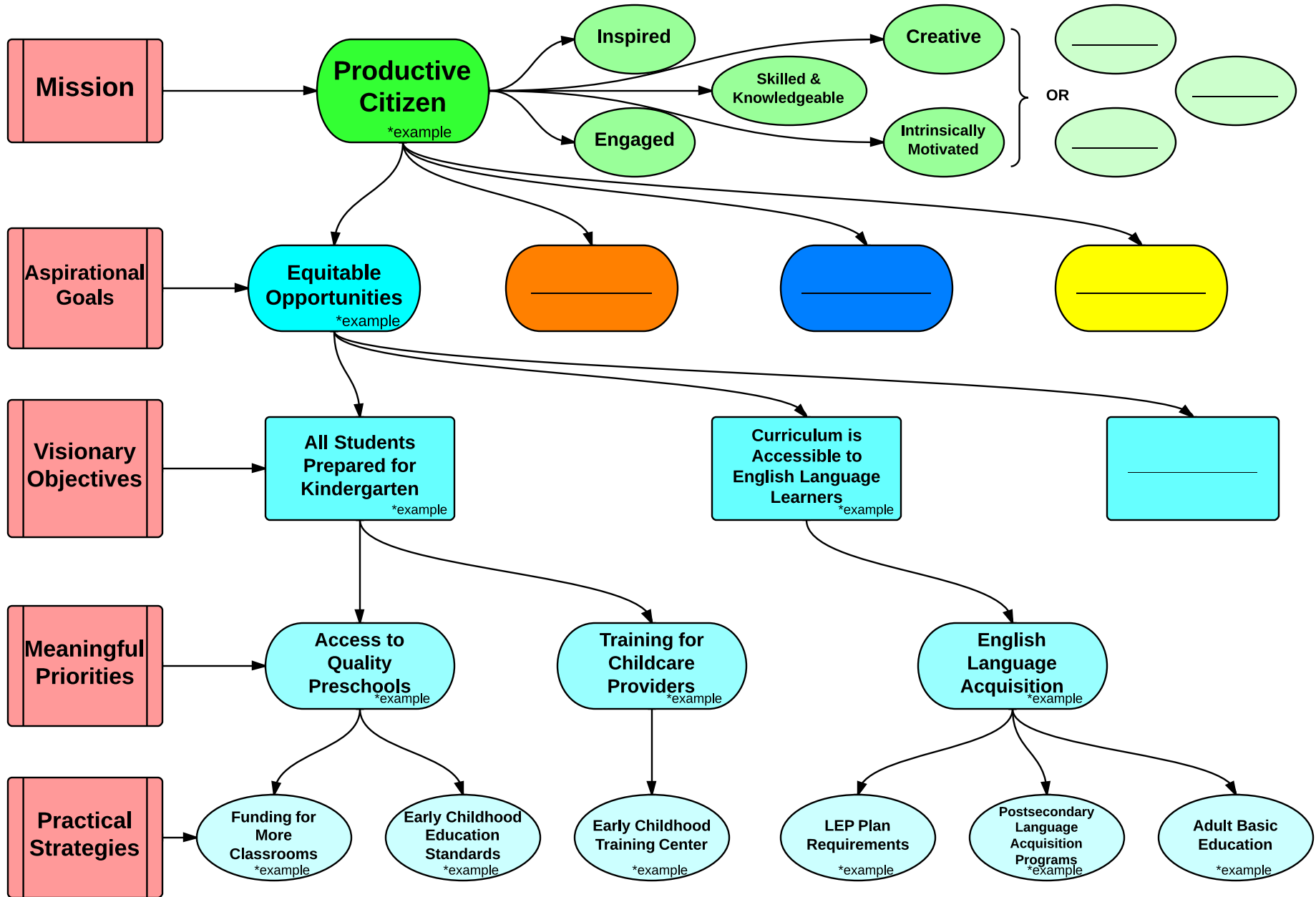


# Initial Timeline for Education Committee

KEY:  = Committee     = Community     = Committee & Community



Nebraska Vision for Education Roadmap  
 -Example of a Goal through the process-



Nebraska Department of Education  
 School Finance & Organization Services  
 2014/15 ESU Core Services & Technology Infrastructure Certification  
 Local Effort Rate is .0135

Service Unit	Distance Education Telecommunication Allowance	Base Allocation	ESU Satellite Allocation	Student Allocation	Formula Need (Base Revenue Need)	Stabilized Formula Need (Base Revenue Need)	Yield from Local Effort	Calculated Aid
ESU 01	23,697.15	337,154.20	0.00	1,128,771.08	1,489,622.43	1,489,622.43	1,060,426.53	429,195.90
ESU 02	0.00	337,154.20	0.00	1,231,023.03	1,568,177.23	1,568,177.23	1,308,748.27	259,428.96
ESU 03	17,050.01 + 17,050	337,154.20	0.00	6,916,917.68	7,271,121.89	7,271,121.89	4,190,632.10	3,080,489.79
ESU 04	0.00	337,154.20	0.00	626,398.02	963,552.22	963,552.22	709,705.43	253,846.79
ESU 05	10,497.50	337,154.20	0.00	551,539.75	899,191.45	899,191.45	724,074.05	175,117.40
ESU 06	404,553.92 + 396,532	337,154.20	0.00	1,294,601.48	2,036,309.60	2,036,309.60	1,464,122.10	572,187.50
ESU 07	13,674.85 - 31,372	337,154.20	0.00	1,223,685.70	1,574,514.75	1,574,514.75	1,717,674.20	572,187.50 + 276,078
ESU 08	0.00 + 1,233	337,154.20	134,861.68	1,083,509.46	1,555,525.34	1,555,525.34	1,334,561.41	220,963.93
ESU 09	21,289.95	337,154.20	0.00	965,347.31	1,323,791.46	1,323,791.46	1,079,410.18	244,381.28
ESU 10	102,249.89	337,154.20	134,861.68	3,001,798.90	3,576,064.67	3,576,064.67	2,164,358.30	1,411,706.37
ESU 11	53,403.50 + 53,403	337,154.20	0.00	535,612.92	926,170.62	926,170.62	764,123.03	162,047.59
ESU 13	80,962.39	337,154.20	269,723.36	1,584,719.74	2,272,559.69	2,272,559.69	1,209,490.53	1,068,069.16
ESU 15	22,658.45	337,154.20	0.00	419,024.02	778,836.67	778,836.67	526,597.93	252,238.74
ESU 16	0.00	337,154.20	134,861.68	925,168.11	1,397,183.99	1,397,183.99	925,270.85	471,913.14
ESU 17	24,995.77	337,154.20	134,861.68	226,501.35	723,513.00	723,513.00	294,861.34	428,651.66
ESU 18	708.66	337,154.20	0.00	3,595,780.05	3,933,642.91	3,933,642.91	2,316,180.86	1,617,462.05
ESU 19	3,352.17 + 3,352	337,154.20	0.00	4,287,217.54	4,627,723.91	4,627,723.91	2,324,492.89	2,303,231.02
LEARNING COMMUNITY	0.00	0.00	0.00	1,192,454.48	1,192,454.48	1,192,454.48	652,217.79	540,236.69

Distributed to ESUs 13,486,167.97  
 2% ESU Coordinating Council Distribution 275,228.03  
 Total to be Distributed 13,761,396.00