



Schuyler Community Schools
Board of Education Regular Meeting
Monday, June 8, 2020 6:30 PM
Schuyler Community Schools Board Room
120 W. 20th Street
Schuyler, NE 68661-2400

- I. Parent Involvement Hearing
- II. Student Fees Hearing
- III. Call Meeting to Order
 - III.A. Pledge of Allegiance
 - III.B. Declaration of Open Meeting
- IV. Approval of Consent Agenda
 - IV.A. Agenda
 - IV.B. Minutes
 - IV.C. Acceptance of Claims
 - IV.C.1. Bills of \$5,000 or more
 - IV.D. Financial
 - IV.E. Other Listed Reports
- V. Public Forum - We ask that all presentation be limited in their length.
 - V.A. Recognition of visitors and guests
 - V.B. Other topics (limited to 5 minutes - subject to guidelines of the Board Participation Policy)
- VI. Action Items
 - VI.A. Board Policy, Handbooks, and Support Programs
 - VI.A.1. Consider, discuss, and take action to accept the 2019-2020 student fees report and reaffirm the student fees policy for the 2020-2021 school year.
 - VI.A.2. Consider, discuss, and take action to reaffirm the bullying and harassment policy for the 2020-2021 school year.
 - VI.A.3. Consider, discuss, and take action to approve first reading on new and amended board policies
 - VI.A.4. Consider, discuss, and take action to approve administrative recommendations on 2020-2021 handbook changes.
 - VI.A.5. Consider, discuss and take action to approve admission prices and activity passes for the 2020-2021 school year.
 - VI.B. Budget, finance, negotiations, and personnel

VI.B.1. Consider, discuss, and take action to approve 2020-2021 school breakfast and lunch prices.

VI.B.2. Consider, discuss, and take action to accept staff resignations.

VI.B.3. Consider, discuss, and take action to approve new hire recommendations.

VII. Discussion Items and Reports

VII.A. Superintendent's Report

VII.B. Board Member/Committee Reports

VIII. Correspondence Items

IX. Adjournment

TITLE 1 PARENT AND FAMILY MEMBER ENGAGEMENT

The district commits to meeting all requirements of the No Child Left Behind Act of 2001 including Every Student Succeeds Act (ESSA) amendments as they apply to all Title 1 programs conducted within the District. For the purpose of this policy “parents and family members” means “parents and persons in a parental relation to the student.” This Policy will be distributed to all parents annually, in a language that parents can understand.

The District recognizes the unique needs of students who are being served through the Title 1 Program and stresses the importance of parent and family member involvement in the academic success of their children. Opportunities will be provided for parent and family member involvement in their child's education in the following manner:

1. Parents and family members will be involved in the planning, review, development and approval of the Parent and Family Member Engagement Policy through at least one annual meeting held at a convenient time during the first semester.
2. The District will strive to build the capacity for strong engagement of the school, parents and family members by developing School/Parent Compacts to strengthen communication between the home and school:
 - By providing annual meetings in Title 1 buildings to explain Title 1 to parents and family members;
 - By training parents and family members in how to help their children at home;
 - By sharing district standards, benchmarks, and assessments to parents and family members and explaining to them how to help monitor the progress of their children; and
 - By providing parent and family member resource centers at each site.
3. Parents and family members will be provided timely information regarding the District's curriculum, academic assessments used, and proficiency levels expected of all students through the student handbook, parent/teacher conferences, report cards and progress reports along with other communications opportunities.
4. Parents and family members will be provided opportunities to participate, as appropriate, in decisions relating to the education of their children regarding such matters as curriculum, assessments and student performance standards through the School Improvement Plan, Title 1 reviews and plans, and other means as available.
5. The District will coordinate and integrate parent and family member engagement programs and activities with other community programs such as Head Start, Reading First, Title III and Migrant programs, public libraries, public preschools, instructional support services and other federal, state and local programs.

Approved _____ Reviewed _____ Revised _____

PARENTAL INVOLVEMENT IN THE SCHOOLS

It is the policy of the district to provide full access to the parent of any student of the district to review textbooks, tests, curriculum and instructional materials, records of a student of any such parent, unless otherwise prohibited by law, and to any surveys of students done by the school district. Summary information regarding the district's curriculum, testing, and surveys will be provided at the beginning of each school year. Requests for access to specific instructional materials should be addressed to the teacher or administrator.

Requests by parents to attend and monitor courses, assemblies, counseling sessions and other instructional activities shall also be made to the administrator or teacher. While requests to monitor are usually granted, if the request is denied, reasons for the denial will be provided.

It is the policy of the district to provide as consistent an experience as possible in all classroom instruction, testing, surveys, and other school experiences. It is the policy of the district not to excuse students from classroom instruction, testing, and other school experiences unless an objection is submitted to the building principal or teacher outlining the specific experience, the basis for the objection and a proposed solution for dealing with the objection that would be satisfactory to the parent.

The request for the student to be excused will be reviewed by the superintendent and a decision provided to the parents. While verbal objections and decisions are valid, written follow-up to verbal communications is required from the parent and the superintendent. If a student is excused from the requested activity no penalty will be assessed but an agreed upon alternative activity must be performed to the satisfaction of the teacher and superintendent.

It is the policy of the district to use only testing methods and testing instruments that are not of an experimental nature and to avoid using any testing materials or testing techniques that are not generally recognized by educational professionals to be within sound educational standards and both educationally and academically appropriate. It is the policy of the district to notify parents of any standardized testing that may be scheduled within the school district.

It is the policy of the district to notify parents of any survey which may be scheduled and to conduct student surveys judiciously, with full consideration of the fact that parents may find items of the survey objectionable.

(In each of the following six items, the board must describe in policy how it will accomplish the goal described.)

1. The board will involve parents in the development of the Title I plan, the process for school review of the plan and the process for improvement;
2. The board will provide the coordination, technical assistance and other support necessary to assist participating schools in planning and implementing effective parent involvement activities to improve student academic achievement and school performance;
3. The board will build the schools' and parents' capacity for strong parental involvement;
4. The board will coordinate and integrate parental involvement strategies under Title I with other programs such as Head Start, Reading First, etc.;

5. The board will conduct with the involvement of parents, an annual evaluation of the content and effectiveness of the parental involvement policy in improving the academic quality of the school served including identifying barriers to greater participation by parents in Title I activities (with particular attention to low-income parents, Limited English Proficient (LEP) parents, minorities, parents with disabilities and parents with low literacy) and use the findings of the evaluation to design strategies for more effective parental involvement and to revise, as necessary, the parental involvement policies; and
6. The board will involve parents in Title I activities.

The parent or guardian of a student may have access to that student's records during normal business hours of the district according to Policy 507.01 Student Records Access.

This policy is adopted following a public hearing to receive public comments and suggestions.

Legal Reference: Neb. Statute 79-530 to 533
 No Child Left Behind, Title I, Sec. 1118, P.L. 107-110

Cross Reference: 507.01 Student Records Access
 606.03 Objection to Instructional Materials
 611.01 Student Progress Reports
 1005.01 Public Complaints

STUDENT FEES POLICY

The Board of Education of Schuyler Community Schools adopts the following student fees policy in accordance with the Public Elementary and Secondary Student Fee Authorization Act.

The District's general policy is to provide for the free instruction in school in accordance with the Nebraska Constitution and state and federal law. This generally means that the District's policy is to provide free instruction for courses which are required by state law or regulation and to provide the staff, facility, equipment, and materials necessary for such instruction, without charge or fee to the students.

The District does provide activities, programs, and services to children, which extend beyond the minimum level of constitutionally required free instruction. Students and their parents have historically contributed to the District's efforts to provide such activities, programs, and services. The District's general policy is to continue to encourage and, to the extent permitted by law, to require such student and parent contributions to enhance the educational program provided by the District.

Under the Public Elementary and Secondary Student Fee Authorization Act, the District is required to set forth in a policy its guidelines or policies for specific categories of student fees. The District does so by setting forth the following guidelines and policies. This policy is subject to further interpretation or guidance by administrative or Board regulations, which may be adopted from time to time. The Policy includes Appendix "1," which provides further specifics of student fees and materials required of students. Parents, guardians, and students are encouraged to contact their building administration or their teachers or activity coaches and sponsors for further specifics.

(1) Guidelines for non-specialized attire required for specified courses and activities. Students have the responsibility to furnish and wear non-specialized attire meeting general District grooming and attire guidelines, as well as grooming and attire guidelines established for the building or programs attended by the students or in which the students participate. Students also have the responsibility to furnish and wear non-specialized attire reasonably related to the programs, courses and activities in which the students participate where the required attire is specified in writing by the administrator or teacher responsible for the program, course or activity.

The District will provide or make available to students such safety equipment and attire as may be required by law, specifically including appropriate industrial-quality eye protective devices for courses of instruction in vocational, technical, industrial arts, chemical or chemical-physical classes which involve exposure to hot molten metals or other molten materials, milling, sawing, turning, shaping, cutting, grinding, or stamping of any solid materials, heat treatment, tempering, or kiln firing of any metal or other materials, gas or electric arc welding or other forms of welding processes, repair or servicing of any vehicle, or caustic or explosive materials, or for laboratory classes involving caustic or explosive materials, hot liquids or solids, injurious radiations, or other similar hazards. Building administrators are directed to assure that such equipment is available in the appropriate classes and areas of the school buildings, teachers are

directed to instruct students in the usage of such devices and to assure that students use the devices as required, and students have the responsibility to follow such instructions and use the devices as instructed.

(2) Personal or consumable items & miscellaneous

a. (a) Extracurricular Activities. Students have the responsibility to furnish any personal or consumable items for participation in extracurricular activities.

(b) Courses

(i) General Course Materials. Items necessary for students to benefit from courses will be made available by the District for the use of students during the school day. Students may be encouraged, but not required, to bring items needed to benefit from courses including, but not limited to, pencils, paper, pens, erasers, notebooks, trappers, protractors and math calculators. A specific class supply list will be published annually in a Board-approved student handbook or supplement or other notice. The list may include refundable damage or loss deposits required for usage of certain District property.

(ii) Damaged or Lost Items. Students are responsible for the careful and appropriate use of school property. Students and their parents or guardian will be held responsible for damages to school property where such damage is caused or aided by the student and will also be held responsible for the reasonable replacement cost of school property which is placed in the care of and lost by the student.

(iii) Materials Required for Course Materials. Students are permitted to and may be encouraged to supply materials for course projects. Some course projects (such as projects in art and shop classes) may be kept by the student upon completion. In the event the completed project has more than minimal value, the student may be required, as a condition of the student keeping the completed project, to reimburse the District for the reasonable value of the materials used in the project. Standard project materials will be made available by the District. If a student wants to create a project other than the standard course project, or to use materials other than standard project materials, the student will be responsible for furnishing or paying the reasonable cost of any such materials for the project.

(iv) Music Course Materials. Students will be required to furnish musical instruments for participation in optional music courses. Use of a musical instrument without charge is available under the District's fee waiver policy. The District is not required to provide for the use of a particular type of musical instrument for any student.

(v) Parking. Students may be required to pay for parking on school grounds or at school-sponsored activities, and may be subject payment of fines or damages for damages caused with or to vehicles or for failure to comply with school parking rules.

(3) Extracurricular Activities–Specialized equipment or attire. Extracurricular activities means student activities or organizations which are supervised or administered by the District, which do not count toward graduation or advancement between grades, and in which participation is not otherwise required by the District. The District will generally furnish students with specialized equipment and attire for participation in extracurricular activities. The District is not required to provide for the use of any particular type of equipment or attire.

Equipment or attire fitted for the student and which the student generally wears exclusively, such as dance squad, cheerleading, and music/dance activity (e.g. choir or show choir) uniforms and outfits, along with T-shirts for teams or band members, will be required to be provided by the participating student. The cost of maintaining any equipment or attire, including uniforms, which the student purchases or uses exclusively, shall be the responsibility of the participating student. Equipment which is ordinarily exclusively used by an individual student participant throughout the year, such as golf clubs, softball gloves, and the like, are required to be provided by the student participant. Items for the personal medical use or enhancement of the student (braces, mouth pieces, and the like) are the responsibility of the student participant. Students have the responsibility to furnish personal or consumable equipment or attire for participation in extra curricular activities or for paying a reasonable usage cost for such equipment or attire. For musical extracurricular activities, students may be required to provide specialized equipment, such as musical instruments, or specialized attire, or for paying a reasonable usage cost for such equipment or attire.

(4) Extracurricular Activities–Fees for participation. Any fees for participation in extracurricular activities are further specified in Appendix “1.” Admission fees are charged for extracurricular activities and events.

(5) Postsecondary education costs. Students are responsible for postsecondary education costs. The phrase “postsecondary education costs” means tuition and other fees only associated with obtaining credit from a postsecondary educational institution. For a course in which students receive high school credit and for which the student may also receive postsecondary education credit, the course shall be offered without charge for tuition, transportation, books, or other fees, except tuition and other fees associated with obtaining credits from a postsecondary educational institution.

(6) Transportation costs. Students are responsible for fees established for transportation services provided by the District as and to the extent permitted by federal and state laws and regulations.

(7) Copies of student files or records. The Superintendent or the Superintendent's designee shall establish a schedule of fees representing a reasonable cost of reproduction for copies of a student's files or records for the parents or guardians of such student. A parent, guardian or student who requests copies of files or records shall be responsible for the cost of copies reproduced in accordance with such fee schedule. The imposition of a fee shall not be used to prevent parents of students from exercising their right to inspect and review the students' files or records and no fee shall be charged to search for or retrieve any student's files or records. The fee schedule shall permit one copy of the requested records be provided for or on behalf of the student without charge and shall allow duplicate copies to be provided without charge to the extent required by federal or state laws or regulations.

(8) Participation in before-and-after-school or prekindergarten services. Students are responsible for fees required for participation in before-and-after-school or prekindergarten services offered by the District, except to the extent such services are required to be provided without cost.

(9) Participation in summer school or night school. Students are responsible for fees required for participation in summer school or night school. Students are also responsible for correspondence courses.

(10) Breakfast and lunch programs. Students shall be responsible for items which students purchase from the District's breakfast and lunch programs. The cost of items to be sold to students shall be consistent with applicable federal and state laws and regulations. Students are also responsible for the cost of food, beverages, and personal or consumable items which the students purchase from the District or at school, whether from a "school store," a vending machine, a booster club or parent group sale, a book order club, or the like. Students may be required to bring money or food for field trip lunches and similar activities.

(11) Waiver Policy. The District's policy is to provide fee waivers in accordance with the Public Elementary and Secondary Student Fee Authorization Act. Students who qualify for free or reduced-price lunches under United States Department of Agriculture child nutrition programs shall be provided a fee waiver or be provided the necessary materials or equipment without charge for: (1) participation in extracurricular activities and (2) use of a musical instrument in optional music courses that are not extracurricular activities. Participation in a free-lunch program or reduced-price lunch program is not required to qualify for free or reduced-price lunches for purposes of this section. Students or their parents must request a fee waiver prior to participating in or attending the activity, and prior to purchase of the materials.

(12) Distribution of Policy. The Superintendent or the Superintendent's designee shall publish the District's student fee policy in the Student Handbook or the equivalent (for example, publication may be made in an addendum or a supplement to the student handbook). The Student Handbook or the equivalent shall be provided to every student of the District or to every household in which at least one student resides, at no cost.

(13) Student Fee Fund. The School Board hereby establishes a Student Fee Fund. The Student Fee Fund shall be a separate school district fund not funded by tax revenue, into which all money collected from students and subject to the Student Fee Fund shall be deposited and from which money shall be expended for the purposes for which it was collected from students. Funds subject to the Student Fee Fund consist of money collected from students for: (1) participation in extracurricular activities, (2) postsecondary education costs, and (3) summer school or night school.

CERTIFICATION

On the 16th day of June, 2014, the school board held a public hearing at a meeting of the school board on a proposed student fee policy. Such public hearing followed a review of the amount of money collected from students pursuant to, and the use of waivers provided in, the student fee policy for the 2013-14 school year. The foregoing student fee policy was adopted after such public hearing by a majority vote of the school board at an open public meeting in compliance with the public meetings laws.

Superintendent or Other Authorized School Official

Legal References:

Neb. Rev. Stat. §§79-2,125 to 79-2,135 and Laws 2003, LB 249 (The Public Elementary and Secondary Student Fee Authorization Act)

Neb. Constitution, Article VII, section 1.

Neb. Rev. Stat. §§79-241, 79-605, and 79-611(transportation)

Neb. Rev. Stat. §79-2,104 (student files or records)

Neb. Rev. Stat. §79-715 (eye-protective devices)

Neb. Rev. Stat. §79-737 (liability of students for damages to school books)

Neb. Rev. Stat. §79-1104 (before-and-after-school or prekindergarten services)

Neb. Rev. Stat. §§79-1106 to 79-1108.03 (accelerated or differentiated curriculum program)

Approved _____ Reviewed 6/16/2024 Revised _____

**Appendix“1” to 2013-14 Student Fees Policy of Schuyler Community Schools—
Additional Specification of Required Materials and Fees**

Preschool Program	Activity	Total Collected
NONE		
Fees Waived:	Activity	Total Waived
NONE		
Elementary Program	Activity	Total Collected
Kindergarten and 1 st grade	Supplies/Party Fees (\$20)	\$5,120.00
2 nd through 5 th grade	Party Fees (\$5)	\$2,655.00
Kind. through 5 th grade	Field Trips (\$3)	\$2,361.00
Fees Waived:	Activity	Fees Waived:
Kindergarten and 1 st grade	Supplies/Party Fees (\$20)	Estimated: 3@ \$60.00
2 nd through 5 th grade	Party Fees (\$5)	Estimated: 5@ \$25.00
Kind. through 5 th grade	Field Trips (\$3)	Estimated: 5@ \$15.00
Middle School Program	Activity	Total Collected
7 th and 8 th Grades	ITE Class Lab Fees	\$2,000.00
7 th and 8 th Grades	FCS Class Lab Fees	\$2,500.00
8 th Grade	iPad Optional Insurance Fees	\$1,054.24
Fees Waived:	Activity	Total Waived
NONE		
High School Program	Activity	Total Collected
9-12 Grades	Ag. Ed. Class Lab Fees	\$263.00
9-12 Grades	iPad Optional Insurance Fees	\$4,217.30
9-12 Grades	ITE Class Lab Fees	\$1,128.85
9-12 Grades	FCS Class Lab Fees	\$334.44
9-12 Grades	Music Class Fees	\$1,440.00
9-12 Grades	Guidance Fees	\$252.00
Fees Waived:	Activity	Total Waived
NONE		
Extra-Curricular Programs	Activity	Total Collected
General Activity	SES Activity Pass	\$330.00
General Activity	SMS Activity Pass	\$240.00
General Activity	SCHS Activity Pass	\$630.00
Fees Waived:	Activity	Total Waived
NONE		\$0.00

**Appendix“1” to 2018-19 Student Fees Policy of Schuyler Community Schools—
Additional Specification of Required Materials and Fees**

Program 2018-19 School Year	General Description of Fee or Material	\$ Amount of Fee Collected
Rural Schools	Activity	Total Collected
Fisher’s	Field Trip (\$3)	\$210.00
Richland	Field Trip (\$5)	\$145.00
Fees Waived:	Activity	Fees Waived:
NONE	None	\$0.00
Elementary School	Activity	Total Collected
K-5	Activity Fees (\$10)	\$7,188.50
Kindergarten	Field Trip (\$5)	\$575.00
1 st Grade	Field Trip (\$5.50)	\$704.00
2 nd Grade	Field Trip (\$10)	\$1,130.00
4 th Grade	Field Trip (\$5/\$7 parents)	\$828.00
5 th Grade	Field Trip (\$8/\$5parents)	\$1,001.00
K-5	Colfax Co. Movie Trips	\$3,341.00
5 th Grade	Play in Columbus (\$1.50)	\$181.75
1 st Grade	Play in Columbus (\$1.50)	\$212.25
4 th Grade	Recorder Choir (\$5)	\$300.00
5 th Grade	Band (Fees for Reeds, books)	\$263.00
Fees Waived:	Activity	Fees Waived:
Party and Field Trip Fees	NONE	\$0
Middle School	Activity	Total Collected
6 th , 7 th & 8 th Grades	ITE Lab Fees	\$2,975.00
6 th , 7 th & 8 th Grades	FCS Lab Fees	\$2,380.00
6 th , 7 th & 8 th Grades	Band Fees	\$163.65
Fees Waived:	Activity	Fees Waived:
6 th , 7 th & 8 th Grades	ITE Lab Fees	\$90.00
6 th , 7 th & 8 th Grades	FCS Lab Fees	\$60.00
High School	Activity	Total Collected
9-12 Grades	Ag. Ed. Lab Fees	\$0.00
9-12 Grades	Science/Math Club Fees	\$210.00
9-12 Grades	Library Replacement Fee	\$928.87
9-12 Grades	FCS Lab Fees	\$25.00
9-12 Grades	Music Fees	\$111.00
9-12 Grades	Guidance (PSAT) Fees	\$0.00
9-12 Grades	iPad Tech Fees	\$5,750.00
9-12 Grades	National Honor Society Fees	\$165.00
Fees Waived:	Activity	Fees Waived:
9-12 Grades	Band Shoes	\$0.00
Extra-Curricular Programs	Activity	Total Collected
General Activity	SES Activity Pass	\$0.00
General Activity	SMS Activity Pass	\$3,770.00
General Activity	SCHS Activity Pass	\$1,260.00
Fees Waived:	Activity	Fees Waived:
9-12	Activity Pass	\$4,290.00
6-8	Activity Pass	\$100.00

**Appendix“1” to 2019-20 Student Fees Policy of Schuyler Community Schools—
Additional Specification of Required Materials and Fees**

Program 2019-20 School Year	General Description of Fee or Material	\$ Amount of Fee Collected
Rural Schools	Activity	Total Collected
Fisher’s	Movie – Schuyler Theater	\$305
Richland	Movie – Schuyler Theater	\$360
Richland	Field Trip (\$5)	\$180
Fees Waived:	Activity	Fees Waived
NONE	None	\$0
Elementary School	Activity	Total Collected
K-5	Activity Fees (\$10)	\$6,304
Kindergarten	Field Trip	\$0
1 st Grade	Field Trip	\$0
2 nd Grade	Field Trip	\$0
4 th Grade	Field Trip (\$6/\$8.50 parents)	\$791.75
5 th Grade	Field Trip (\$7)	\$1,036
K-5	Colfax Co. Movie Trips	\$2,580
5 th Grade	Play in Columbus (\$1.50)	\$0.00
1 st Grade	Play in Columbus (\$1.50)	\$169
4 th Grade	Recorder Choir (\$5)	\$280
5 th Grade	Band (Fees for Reeds, books)	\$110
Fees Waived:	Activity	Fees Waived
Party and Field Trip Fees	NONE	\$50
Middle School	Activity	Total Collected
6 th , 7 th & 8 th Grades	ITE Lab Fees	\$2,560
6 th , 7 th & 8 th Grades	FCS Lab Fees	\$960
6 th , 7 th & 8 th Grades	Band Fees	\$0
Fees Waived:	Activity	Fees Waived:
6 th , 7 th & 8 th Grades	ITE Lab Fees	\$60
6 th , 7 th & 8 th Grades	FCS Lab Fees	\$30
High School	Activity	Total Collected
9-12 Grades	Ag. Ed. Lab Fees	\$0
9-12 Grades	Science/Math Club Fees	\$171
9-12 Grades	Library Replacement Fee	\$107
9-12 Grades	Music Fees	\$210
9-12 Grades	Guidance (PSAT) Fees	\$136
9-12 Grades	iPad Tech Fees	\$7,250
Fees Waived:	Activity	Fees Waived
9-12 Grades	Band Shoes	\$0
Extra-Curricular Programs	Activity	Total Collected
General Activity	Richland Activity Pass	\$120
General Activity	Fisher’s Activity Pass	\$120
General Activity	SMS Activity Pass	\$3,690
General Activity	SCHS Activity Pass	\$5,300
Fees Waived:	Activity	Fees Waived
9-12	Activity Pass	\$550
6-8	Activity Pass	\$50



Schuyler Community Schools
Board of Education Regular Meeting
Monday, June 8, 2020 6:30 PM
Schuyler Community Schools Board Room
120 W. 20th Street
Schuyler, NE 68661-2400

I. Parent Involvement Hearing

II. Student Fees Hearing

III. Call Meeting to Order

III.A. Pledge of Allegiance

III.B. Declaration of Open Meeting

IV. Approval of Consent Agenda

IV.A. Agenda

IV.B. Minutes

IV.C. Acceptance of Claims

IV.C.1. Bills of \$5,000 or more

IV.D. Financial

IV.E. Other Listed Reports

V. Public Forum - We ask that all presentation be limited in their length.

V.A. Recognition of visitors and guests

V.B. Other topics (limited to 5 minutes - subject to guidelines of the Board Participation Policy)

VI. Action Items

VI.A. Board Policy, Handbooks, and Support Programs

VI.A.1. Consider, discuss, and take action to accept the 2019-2020 student fees report and reaffirm the student fees policy for the 2020-2021 school year.

VI.A.2. Consider, discuss, and take action to reaffirm the bullying and harassment policy for the 2020-2021 school year.

VI.A.3. Consider, discuss, and take action to approve first reading on new and amended board policies

VI.A.4. Consider, discuss, and take action to approve administrative recommendations on 2020-2021 handbook changes.

VI.A.5. Consider, discuss and take action to approve admission prices and activity passes for the 2020-2021 school year.

VI.B. Budget, finance, negotiations, and personnel

VI.B.1. Consider, discuss, and take action to approve 2020-2021 school breakfast and lunch prices.

VI.B.2. Consider, discuss, and take action to accept staff resignations.

VI.B.3. Consider, discuss, and take action to approve new hire recommendations.

VII. Discussion Items and Reports

VII.A. Superintendent's Report

VII.B. Board Member/Committee Reports

VIII. Correspondence Items

IX. Adjournment

Prepared by: Sally Jakub, Secretary to the Board



Schuyler Community Schools
Board of Education Regular Meeting
Monday, May 11, 2020 6:30 PM
Schuyler Community Schools Board Room
120 W. 20th Street
Schuyler, NE 68661-2400

Attendance Taken at 6:33 PM.

Richard Brabec: Present
Mynor Hernandez: Present
Nina Lanuza: Present
Chuck Misek: Present
Virginia Semerad: Present
Brian Vavricek: Present

Present: 6.

I. Call Meeting to Order

Procedural Item

STRIVE - COMMIT - SUCCEED - District Mission Statement

Schuyler Community Schools in partnership with parents, students, and the community is committed to educate students to become skilled, knowledgeable and responsible citizens in a global society - District Vision Statement

Notice of this meeting was given in advance according to State Law 84-1411, by giving notice of the meeting to the public. Notice of this meeting was also given in advance to all members of the Board of Education

I.A. Pledge of Allegiance

Procedural Item

I.B. Declaration of Open Meeting

Procedural Item

This meeting has been preceded by advance notice and is hereby declared to be in open session. A copy of the Open Meetings Act is posted in the front of the meeting room.

Nebraska Open Meetings

Act: http://nirc.nebraska.gov/documents/statutes/NebraskaOpenMeetingsAct_current.pdf

II. Approval of Consent Agenda

Consent Agenda

Discuss, Consider and Take Action on the consent agenda

Motion to approve the consent agenda Passed with a motion by Mynor Hernandez and a second by Virginia Semerad.

Richard Brabec: Yea, Mynor Hernandez: Yea, Nina Lanuza: Yea, Chuck Misek: Yea, Virginia Semerad: Yea, Brian Vavricek: Yea

Yea: 6, Nay: 0

II.A. Agenda
Consent Item

II.B. Minutes
Consent Item

II.C. Acceptance of Claims
Consent Item

II.C.1. Bills of \$5,000 or more
Consent Item

II.D. Financial
Consent Item

II.E. Other Listed Reports
Consent Item

III. Public Forum - We ask that all presentation be limited in their length.
Information Item

III.A. Recognition of visitors and guests
Information Item
Rich Brabec

III.B. Other topics (limited to 5 minutes - subject to guidelines of the Board Participation Policy)
Information Item

IV. Action Items
Procedural Item

IV.A. Americanism: Curriculum, Assessment, and Instructional Programs
Procedural Item
Virginia Semerad, Rich Brabec

This committee is responsible for reviewing curriculum recommendations, textbook selection, requisitions/inventory, and instructional programs.

IV.A.1. Consider, discuss, and take action to approve the 2020 Textbook Replacement Plan.
Action Item

The entire curriculum cycle is posted in the district website. Attached below is the 2020 textbook replacement plan. See attachment below.

Motion to approve the 2020 textbook replacement plan as presented. Passed with a motion by Mynor Hernandez and a second by Chuck Misek.

Richard Brabec: Yea, Mynor Hernandez: Yea, Nina Lanuza: Yea, Chuck Misek: Yea, Virginia Semerad: Yea, Brian Vavricek: Yea

Yea: 6, Nay: 0

IV.A.2. Consider, discuss, and take action to approve the 2020 Strategic Plan.

Action Item

We have worked for the last four months to finalize our recommendations for the 2020 strategic plan. We used Thoughtexchange to encourage our staff and parents and students to give input on our programs and recommendations for action plans.

Motion take action to approve the 2020 Strategic Plan. Passed with a motion by Virginia Semerad and a second by Nina Lanuza.

Richard Brabec: Yea, Mynor Hernandez: Yea, Nina Lanuza: Yea, Chuck Misek: Yea, Virginia Semerad: Yea, Brian Vavricek: Yea

Yea: 6, Nay: 0

IV.B. Board Policy, Handbooks, and Support Programs

Information Item

Holly Hild, Brian Vavricek, Rich Brabec

This committee is responsible for annual review of board policies, handbooks, and crisis/safety plans. This committee is also responsible for the support and development of support programs(nursing, food service) in the district.

IV.B.1. Consider, discuss, and take action to approve the Emergency Response Resolution Regarding Coronavirus

Action Item

Attached below is the recommended resolution supporting our application for the emergency declaration due to the impact of COVID-19 and school closure. See attached resolution prepared by our legal counsel.

Motion to approve the Emergency Response Resolution as presented. Passed with a motion by Richard Brabec and a second by Virginia Semerad.

Richard Brabec: Yea, Mynor Hernandez: Yea, Nina Lanuza: Yea, Chuck Misek: Yea, Virginia Semerad: Yea, Brian Vavricek: Yea

Yea: 6, Nay: 0

IV.C. Building, Grounds, and Transportation

Procedural Item

Chuck Misek, Eric Cerny, Virginia Semerad

This committee is responsible for recommending approval of building/grounds and transportation programs, vehicle replacement schedule, building and maintenance and upgrade schedule.

IV.C.1. Consider, discuss, and take action to approve the 2020 Building and Grounds Plan
Action Item

The building and grounds plan is on the filemaker portal. You can review the entire plan on the board website. See attached 2020 plan.

Motion to approve the 2020 building and grounds plan as presented. Passed with a motion by Mynor Hernandez and a second by Chuck Misek.

Richard Brabec: Yea, Mynor Hernandez: Yea, Nina Lanuza: Yea, Chuck Misek: Yea, Virginia Semerad: Yea, Brian Vavricek: Yea

Yea: 6, Nay: 0

IV.C.2. Consider, discuss, and take action to approve the 2020 Equipment Replacement
Plan.

Action Item

The 2020 Equipment Replacement Plan is on the filemaker portal. You can review the entire plan on the board website. See attached 2020 plan.

Motion to approve the 2020 equipment replacement plan as presented. Passed with a motion by Virginia Semerad and a second by Mynor Hernandez.

Richard Brabec: Yea, Mynor Hernandez: Yea, Nina Lanuza: Yea, Chuck Misek: Yea, Virginia Semerad: Yea, Brian Vavricek: Yea

Yea: 6, Nay: 0

IV.C.3. Consider, discuss, and take action to approve the 2020 Vehicle Replacement Plan
Action Item

The 2020 vehicle replacement plan is on the filemaker portal. You can review the entire plan on the board website. See attached 2020 plan. The only vehicle on the plan for this fall is a bus.

Motion to approve the 2020 vehicle replacement plan as presented. Passed with a motion by Richard Brabec and a second by Chuck Misek.

Richard Brabec: Yea, Mynor Hernandez: Yea, Nina Lanuza: Yea, Chuck Misek: Yea, Virginia Semerad: Yea, Brian Vavricek: Yea

Yea: 6, Nay: 0

IV.D. Governance: Public Relations, Technology, and Planning

Procedural Item

Brian Vavricek, Holly Hild, Virginia Semerad

This committee is responsible for recommending the annual district calendar, strategic planning process, technology, and promoting positive public relations and communications program.

IV.D.1. Consider, discuss, and take action on the 2020 Technology Replacement Plan.
Action Item

The entire technology replacement plan is on the board website. Attached below is the 2020 technology equipment replacement plan. See attached plan.

Motion to approve the 2020 Technology Replacement Plan as presented. Passed with a motion by Virginia Semerad and a second by Mynor Hernandez.

Richard Brabec: Yea, Mynor Hernandez: Yea, Nina Lanuza: Yea, Chuck Misek: Yea, Virginia Semerad: Yea, Brian Vavricek: Yea

Yea: 6, Nay: 0

IV.E. Budget, finance, negotiations, and personnel
Procedural Item

Chuck Misek, Rich Brabec, Brian Vavricek

This committee is responsible for budget, finance, and contract negotiations with administration, certificated staff, and support staff.

IV.E.1. Consider, discuss, and take action to approve new hire recommendation.
Action Item

New Hires:

1. Kara Blase: SCHS ELL Teacher
2. Steve Buresh: Buildings and Grounds (Marv Aldrich)
3. Cori Vavricek: SCHS School Nurse (Mary Didier)
4. Jenna Banahan: Part-Time School Nurse Position

Motion to approve new hire recommendation. Passed with a motion by Richard Brabec and a second by Mynor Hernandez.

Brian Vavricek: Abstain (With Conflict), Richard Brabec: Yea, Mynor Hernandez: Yea, Nina Lanuza: Yea, Chuck Misek: Yea, Virginia Semerad: Yea

Yea: 5, Nay: 0, Abstain (With Conflict): 1

IV.E.2. Consider, discuss, and take action to accept staff resignations
Action Item

Resignation

1. Tammy Grotelueschen

Resignation and Retirement

1. Annette Votova: SES Para Educator
2. Donna Sobota; SMS Para Educator

Motion to accept resignations, thank them for their service, and wish Annette Votava and Donna Sobota well in their retirement. Passed with a motion by Mynor Hernandez and a second by Virginia Semerad.

Richard Brabec: Yea, Mynor Hernandez: Yea, Nina Lanuza: Yea, Chuck Misek: Yea, Virginia Semerad: Yea, Brian Vavricek: Yea
Yea: 6, Nay: 0

IV.E.3. Consider, discuss, and take action to approve 2020-21 support staff salary schedule changes.

Action Item

Attached are the recommended support staff salary schedules for 2019-20 and 2020-21 for comparison.

Motion to approve support staff salary schedule changes as recommended. Passed with a motion by Virginia Semerad and a second by Mynor Hernandez.

Richard Brabec: Yea, Mynor Hernandez: Yea, Nina Lanuza: Yea, Chuck Misek: Yea, Virginia Semerad: Yea, Brian Vavricek: Yea
Yea: 6, Nay: 0

IV.E.4. Consider, discuss, and take action to approve 2020-2021 support staff contracts.

Action Item

See attached list and corresponding assigned positions for the 2020-2021 school year.

Motion to approve 2020-21 support staff contracts as presented. Passed with a motion by Mynor Hernandez and a second by Richard Brabec.

Richard Brabec: Yea, Mynor Hernandez: Yea, Nina Lanuza: Yea, Chuck Misek: Yea, Virginia Semerad: Yea, Brian Vavricek: Yea
Yea: 6, Nay: 0

V. Discussion Items and Reports

Procedural Item

V.A. Discuss Extra-Duty Assignments for the 2020-21 school year.

Action Item

The principals and activities directors have been working on the extra-duty contracts for the 2020-21 school year. Attached below are the extra-duty assignments at this time. We still have a few assignments open due to a few open teaching positions at this time. See attached information below.

V.B. Principals Reports

Information Item

Building Principals

Preschool and SES 3-5 Principal's Report: Mr. Comley

This month I want to highlight the families of the Preschool and SES. During this tough time the families have shown so much desire to do what's best for their children. We have received numerous calls and emails on how to help their children. It has been a blessing to have such supportive parents of Schuyler Community Schools. They are the true champions in this and they continue to show me why through all the conversations I have with them. Thank you parents for all you do!

SES K-2 Principal's Report: Mr. Kovar

I would like to take the time in this last board report to thank the people who have made my time here in Schuyler so memorable. First of all the students!! I take a lot of pride in the relationships that I have built with so many students here in Schuyler. From Seniors to Kindergartners, the students of Schuyler Community Schools have greatly impacted me, and made a lasting impression on me as a person. I learned as much from them, as I hope they learned from me.

Secondly the teachers. I have met some outstanding teachers who continue to make Schuyler and their students better. The amount of time and dedication that some of you have is a true testament to what an outstanding teacher looks like.

Lastly, I would like to thank Dr. Hoelsing, the Board, and my fellow Administrators. I have grown so much as an Administrator during my time here at Schuyler. I will work hard to take some of the traits and things that I have learned here into my new position. I would especially like to thank Mr. Comley. I have really enjoyed our 5 years together here at the Elementary School. I think we have made a pretty good team, and more importantly, I have made a lifelong friend. Thanks again!

Rural Schools Principal's Report: Ms. Bebout

Program Spotlight: I would like to give a shout out to ALL my teachers who have put in so much time teaching or working with students in this different environment! They have handed out packets with hands-on fun activities, zoom calls, phone calls, and many other ways to connect with their students during this hard time! I would like to give a shout out to ALL of my para-educators who have gone above and beyond helping in many different capacities. They have helped get packets together, hand out packets on pick-up days, run copies, are working on activities for next year, helping out in different buildings when needed, and para-educator training! I would finally like to give a shout out to the custodians who have been working to keep our schools a safe place to work and for the summer work they have already started on. I am very proud of ALL of my staff and of their commitment to continuing education even when it is completely different!

SMS Assistant Principal's Report: Mr. Zavadil

Packet pickup has been going smooth and our staff has been working as hard and as safely as possible to continue to provide those options to our students. Our fourth packets are underway and will be ready to be picked up on Thursday. This year has not ended as smoothly as we had wanted it, but it has been a very good year. Our staff has done a fantastic job of working with the Schuyler Instructional model and I believe we have had some of our best ratings on our observations to date. The staff has done a great job working with the curriculum department and our curriculum documents have never looked this good! There is no singular moment that I feel is a highlight for our Middle School, rather I would like to recognize our entire staff for working very well and as a cohesive unit through the year. It truly was a very good school year with a strange ending.

SMS Principal's Report: Mrs. Burton

During this historic time, I continue to be blown away by the intentionality and determination of a young adult. It is easy to lump all of our 400 plus students into one category. Instead, I would like to share individual stories of students in our district.

One 8th grade boy comes to mind. On packet pickup days, he is one of the first in the door. Why? He has work to do. He spends his day on the farm working. There are many adults that do not put in as many hours or conduct work quite as physical in their work. He loves it. It brings him joy!

Another 8th grade sister and her 7th grade brother come to mind. They are quarantined to their home and yard. Their online work? It is done. Their yard? It is impeccably mowed? The hedges and garden beds? Not a weed or errant shrub can be seen. Their windows? Sparkling! Their quarantine is an opportunity to honor their neighbors by making their home the best it can be!

There are students that come every single day to pick up lunches at SMS. They are one of the thousand. They come with smiles, some with little brothers and sisters that walk with them. Some walk. Others ride their bike. The lucky ones have parents that drop them off at the entrance or even pick up their meals for them.

I have noticed one that walks every day. He is greeted by Mrs. Shannon while he stands in line six feet apart from the others. Meanwhile, his little siblings stand off to the side. He receives the food and then has the task of hauling the heavy bags back home as he helps the little ones in his care cross the street. The children stare at the park as they walk by. Instead of stopping to play, they are hustled home to where there is little exposure. He is responsible for their care for the day until his parents get home. Every Monday through Friday, he will do it all over again. He isn't more than eleven.

Each one of our students comes from a different set of circumstances. For some, life is easier now than it was on March 17th. For others, they are raising their siblings during the day while trying to keep up with their own Zoom meetings, completing their own packets, or even just answering a text from a friend. Some are working full time hoping to save up money for their future car in high school, or better yet, college in the distant future.

Despite each circumstance, our students continue to rise above their circumstances. They continue to impress me with their courage, acceptance of responsibility, and work ethic. They are Warriors.
I couldn't be more honored to serve as their principal.

SCHS Assistant Principal's Report: Mr. Kasik

As we all know this last couple of months have been difficult to say the least. Our students and especially our seniors have been thrust into the real world with very real consequences. Many are working full-time, helping out at home and also working on educational packets. They have been asked to do this basically overnight at the cost of prom, pep rally's spring sport seasons, graduation parties and a proper way to say good bye to their teachers, coaches and class mates. I cannot imagine myself going through this. Therefore, I want to tell all these students that this has also been hard for teachers and administrators who have watched these kids mature into young adults. Through it all we want you to know that we miss you, we wish you all the success and joy in the world and that we Love you! You guys are the reason we come to work each day. God Bless You and keep you safe!

SCHS Principal's Report: Mr. Grammer

The end of this year has been stressful and challenging for teachers, classified staff, parents, and students. Through it all our school and community have shown great character and resiliency during this trying time. During such tough times, people rise to the challenge and conquer their issues and problems. Our staff and students are no different, they have stood up to the challenge and demonstrated excellence in action.

I would like to recognize individuals who have kept us up and running during this pandemic time:

- Our office staff and administrative assistants
- Custodial personnel who keep our buildings clean and sanitized
- Food service staff for providing meals for our families
- Teachers and staff for providing packets and academic work, so our students have the opportunities to succeed and move forward.
- Especially our students who have stayed positive and working hard to complete their school work

Thank you for your support and assistance. With us all working together we will overcome these challenges

V.C. Directors Reports

Information Item

Directors

Youth Sports Director's Report: Mr. Kovar

As with a lot of things, we had a disappointing finish to our year. Youth softball was cut short, and soccer was not even able to start. However, I am confident that the foundation has been set, for all our youth sports programs to continue to grow and expand in the future. The addition of hiring youth coaches, was a great idea. It will allow JH coaches a chance to build relationships with our students, and help them to have a better idea of what skills and fundamentals to continue to focus on. The calendar for next year is already set, so we should have a smooth and seamless transition to next year. We have ordered some new equipment, and jerseys for next year are already here. Thank you to all of the volunteers and parents who have given their time to help make this program successful!

Warrior Academy - After-School Program Director's Report; Ms. Bebout

Program Spotlight: Warrior Academy held the 1st (hopefully annual) Tree-a-thon on April 24th. This opportunity was presented to the program through our partnership with Beyond School Bells. Ms. Viquez, Ms. Encarnacion, and Ms. Moran were able to hand out 400 trees to the community! Trees were donated to the elementary school and the golf course, the rest of the trees were handed out to the community at the middle school during lunch pick-up. We look forward to offering this program to the Schuyler community in the future.

SMS Activities Director's Report: Mr. Zavadil

Our athletic department had a great year up until the shutdown. Our 8th grade boy's football team went 5-1 and

our girls' volleyball teams won 21 matches between the squads this season which is the most we have had in the past 5 years. Cross country teams both went to all class state with three members of each team placing in the top 100 runners out of over 300. Our Girls' basketball teams had 9 wins and our Boys' wrestling team had 26 athletes with winning records. Our Boys basketball teams had 4 wins. We were excited for track season, but unfortunately did not get to see it through. Overall it was a very successful year for our athletes and we are excited to see our 8th graders to into HS and hopefully have success. Mr. Kasik, Mr. Kovar and myself worked together and have the extra duty contracts assigned for next year. A lot of work and discussion was put forth to make sure that we have the right people in place. The Field-House remains closed, we will wait until we are given the appropriate approval by local authorities to open.

SCHS Activities Director's Report: Mr. Kasik

To our spring athletes and activity participants. Not in a million years would I have imagined a spring like this. I am sure that it does not seem fair, because it isn't. How many winning soccer games did we miss this spring, how many state qualifiers from our golf team and how many races and jumps on the track we will never see, how many outstanding fine arts performances did we miss. As painful as this time seems I think we need to keep some sort of perspective. It is the painful reality that nothing in life is guarantee. We are only given today and it is up to us to make the most of it. A speech I would always give to my teams when I coached was I have but one wish for you this season. I wish that you will make the most of your opportunities and leave this sport with no regrets! If you can walk away from High School accomplishing this you are a huge success in my eyes! God Bless and Stay safe!

SCHS Student Services Director's Report: Dr. Lefdal

Highlights from the Director of Student Services

- I am amazed at the progress of the new addition as well as the remodeling in the building. It is exciting to see things taking shape and I know our students will be amazed with the changes that have taken place.
- I want to thank the paraprofessionals for all of the work they have done at the high school. Whatever we ask them to do, they are there to help out!
- Our front office staff is also doing an amazing job of staying positive and keeping a direct link to our community over the phone. They are there to answer phone calls, collect packets, and give a smile to those coming up to the door!
- Through this tough time, I have had some amazing conversations with some of our students. It has been a great time to get to know our students and really see the challenges that they face and what they have overcome.

Special Education Director's Report: Mrs. Vrba

A question that I posed to my SPED-tacular Team:

Who has totally surprised you through this process? (like which student)

1. Dakota has been a joy to touch base with. He likes to get on the phone and tell me what he has been doing, including the packet work and fun things with his family. The neat thing I've noticed is how good he talks on the phone and I understand him clearly.
2. Keven knew his high frequency words on two pages.
3. Mauricio has asked me questions during our phone calls every week and is really trying hard on the work. He is able to tell me when he gets frustrated with his work and I believe that's a great skill he has so we can work through it.
4. They are doing a great job through the zooming process and we are able to help them.
5. Daylin is the student that has most surprised me throughout this process. A few weeks ago I was on the phone with her for 30 minutes helping her with some math. It was great to see Daylin go from being a super shy girl to someone who can work independently at home and speak with her teacher over the phone.
6. Mario has surprised me....he wants to complete his work right away.
7. Nobody has really surprised me but I was very excited to hear Jayro's mom say she was so happy to see how smart he is and how much he could do!
8. Arli She keeps in touch by email or calling a few times each week. She reports that she IS wearing her hearing aids! When I talk to her on the phone she doesn't ask me to repeat and seems to be understanding!
9. I would say Joxsemar surprised me. The first packet that I sent home was supplies and instructions to create flashcards. There was not anything that needed to be turned in, but he returned his instruction page. I had a good feeling that he really took the time to do it, but then also took the time to show me that he did it.

Curriculum, Assessment and Instruction Director's Report: Dr. Gibbons

Curriculum - We have been working on updating and preparing curriculum documents to be published in the FileMaker Pro Standards Module. Becky Lefdal, Mindy Perrin and I have met with every curriculum team over the past few weeks to help them with getting their priority standards, proficiency scales and scope and sequence ready for the beginning of the year next year. Teachers have done an excellent job of getting the documents finalized.

Professional Development - We are rolling out two new parts of our Renaissance Suite of programs at the beginning of the year next year. We will be implementing Accelerated Reader and Freckle Math. In order to prepare, we will have three professional development sessions this week. On Tuesday, we'll learn about Literacy Solutions to Accelerate Learning for All with a Focus on AR and MyON. Then Wednesday, the session will cover Differentiated Supports using Star Custom and finally, the session on Thursday will be about Getting Started with Freckle Math.

V.D. Superintendent's Report

Information Item

Dan Hoelsing

1. **End of the Year Recognition:** We will host our end of the year recognition ceremony over zoom on May 21st at 8:00AM. We will have those receiving special recognition and those retiring come to the boardroom for the presentation. The remaining staff will be in attendance over zoom.

2. **School Calendar:** Our final workday is May 21st (185 Day Contract). We will be closed on Friday, May 22nd through Monday, May 25th. Extended contracts may begin May 26th. Teachers and counselors on extended contracts must coordinate days with their building principals.

3. **Preschool-8 4th Packet Preparation:** The fourth and final packet for preschool through 8th grade should be completed today, Monday, May 11th, ready for pickup on Thursday, May 14th, remaining packets will be mailed on Friday, May 15th.

4. **9-12 Final Packet Pickup:** High school teachers and administrators are working on a 4th packet to be picked up at the high school with student awards and year-end communication to our students. These packets should be completed by Friday, May 15th and pickup will be next week. Final grades are due on Wednesday, May 20th.

5. **Graduation:** Seniors will be checking in their iPads when they are finished and will pick up their caps and gowns and have a picture taken with their diploma in their graduation attire. We have no more guidance on graduation. We are *tentatively* planning on an in-person graduation ceremony on August 1-2, or if not allowed, move to September 5-6 (Labor Day weekend).

6. **Food Service:** We are still averaging about 2,000 meals per day. Our food program will suspend services on Friday through Monday for Memorial Day (May 22-25). We are also moving the high school kitchen equipment, utensils, supplies, etc...into the connex this week.

Backpack Program and Food Pantry Programs: In addition to our daily breakfast and lunch program we are supporting the backpack and food pantry programs. The backpack program provides weekend meals for students on free and/or reduced lunch program. Schuyler's next Mobile Food Pantry will be held at SES on Thursday, May 14 at 4:30 pm. Volunteers are needed from 3:30-6:00 to help unload the truck, put food into vehicles, and clean up.

NDE and Federal Updates:

Friday's State Board Meeting. This past Friday (May 8th), the State Board of Education met. At the beginning of the meeting, Commissioner Blomstedt invited two parent/student advocates to present on schools' approaches to special education during the shutdown. The presentation was not particularly positive towards some school districts (though no names were mentioned). Towards the end of the discussion, the Commissioner commented that he will be recommending changes to State Board policy/rules to implement more "accountability" powers for NDE to take against school districts, including for special education requirements. In addition, the Omaha World Herald has reportedly started working on a story about schools' treatment of and attitudes towards special education students during the shutdown. We will keep an eye out for those proposed revisions and work with our legal counsel to respond with necessary policy changes.

CARES Act. Last Friday, the U.S. Department of Education issued new "guidance" on certain CARES Act funds. The most controversial aspect of the "guidance" includes the requirement that public school districts use their CARES Act funds to "provide equitable services to nonpublic schools." If NDE requires public schools to provide equitable services to nonpublic students, our district's portion of its CARES Act funds could be significantly decreased. These CARES Act funds can be used for any and all COVID-related expenditures that were incurred on or after March 13, 2020. CARES Act funds are available to be used through September 30, 2022. NDE will be rolling out a plan for schools to apply for and receive CARES funds.

Title IX Regulations. Last week, the U.S. Department of Education issued new Title IX regulations and guidance. The new regulations are set to go into effect on August 14, 2020. There is a reasonable likelihood that a federal court will enter a nationwide injunction to block the implementation of these regulations. There may be some policy and handbook changes that need to be updated this summer to comply with the new regulations.

Launch Nebraska. As you now know, NDE released "Launch Nebraska" last week. It remains unclear whether the "steps" within Launch Nebraska are mandatory or suggested. We will continue to secure a definitive answer on this question.

Extended School Year (ESY): It is important to remember that the purpose of ESY is to prevent regression, while compensatory services are to make up for a school's failure to deliver appropriate services as needed to deliver a free and appropriate education (FAPE). It remains unclear whether schools will be allowed to have in-person summer school. The current DHM (that prohibits all schools from educating students in-person) expires at the end of May.

Reading Improvement Act: Requires each school district to "make available a summer reading program each summer . . ." 79-2605(1)(c). Governor Ricketts' prior Executive Order only waived 79-2603(1), so the summer reading statutory requirement remains in effect. We are hoping to receive some direction from the Governor's Office as to whether the summer reading program's requirements will be waived or will continue to apply during this summer,

Fall Return to School: Depending on how the virus and DHM's play out this summer, schools may need to be prepared to act on a number of important items at their June or July (perhaps even August) board meetings. If schools are not allowed to educate students in-person (or will need to have partial remote and partial in-person), we will need to have a plan for a safe return to school. We will use thoughtexchange to receive staff perspective on the effectiveness of our current continuity of learning plan. This information is necessary prior to us making any plans for a modified start to our school year in the fall.

V.E. Board Member/Committee Reports
Information Item
Board Members

VI. Correspondence Items
Information Item

VII. Adjournment
Action Item

Motion to adjourn Passed with a motion by Chuck Misek and a second by Virginia Semerad.

Richard Brabec: Yea, Mynor Hernandez: Yea, Nina Lanuza: Yea, Chuck Misek: Yea, Virginia Semerad: Yea, Brian Vavricek: Yea

Yea: 6, Nay: 0

Schuyler Community Schools
Board of Education Regular Meeting Monday, May 11, 2020 6:30 PM Schuyler
Community Schools Board Room
120 W. 20th Street
Schuyler, NE 68661-2400

President Brabec called the regular board meeting to order at 6:33 PM. Board Members present: Brabec, Lanuza, Vavricek and Hernandez, Misek and Semerad.

President Brabec read the Mission Statement and declared the meeting to be in open session. All school board members and the public were notified of the meeting in advance according to State Law 84-1411. All present participated in the Pledge of Allegiance.

Motion to approve the consent agenda Passed with a motion by Mynor Hernandez and a second by Virginia Semerad.

Motion to approve the 2020 textbook replacement plan as presented. Passed with a motion by Mynor Hernandez and a second by Chuck Misek.

Motion take action to approve the 2020 Strategic Plan. Passed with a motion by Virginia Semerad and a second by Nina Lanuza. Thoughexchange was used to encourage our staff and parents and students to give input on our programs and recommendations for action plans.

Motion to approve the Emergency Response Resolution as presented. Passed with a motion by Richard Brabec and a second by Virginia Semerad.

Motion to approve the 2020 building and grounds plan as presented. Passed with a motion by Mynor Hernandez and a second by Chuck Misek.

Motion to approve the 2020 equipment replacement plan as presented. Passed with a motion by Virginia Semerad and a second by Mynor Hernandez.

Motion to approve the 2020 vehicle replacement plan as presented. Passed with a motion by Richard Brabec and a second by Chuck Misek. The only vehicle on the plan for this fall is a bus.

Motion to approve the 2020 Technology Replacement Plan as presented. Passed with a motion by Virginia Semerad and a second by Mynor Hernandez.

The 2020 building and grounds plan, equipment replacement plans, vehicle replacement plans, textbook replacement, technology replacement plan and the Strategic Plan all can be found on the board website.

Motion to approve new hire recommendation. Passed with a motion by Richard Brabec and a second by Mynor Hernandez. Kara Blase: SCHS ELL Teacher, Steve Buresh: Buildings and Grounds, Cori Vavricek: SCHS School Nurse and Jenna Banahan: Part-Time School Nurse Position

Motion to accept resignations, thank them for their service, Tammy Groteluseschen and wish Annette Votava and Donna Sobota well in their retirement. Passed with a motion by Mynor Hernandez and a second by Virginia Semerad.

Motion to approve support staff salary schedule changes as recommended. Passed with a motion by Virginia Semerad and a second by Mynor Hernandez.

Motion to approve 2020-21 support staff contracts as presented. Passed with a motion by Mynor Hernandez and a second by Richard Brabec.

Dr. Hoelsing reported that the principals and activities directors have been working on the extra-duty contracts for the 2020-21 school year.

One good thing was shared by all present.

Motion to adjourn Passed with a motion by Chuck Misek and a second by Virginia Semerad.

Link to watch the board meeting:

https://zoom.us/rec/share/MxMBKHx6XpITY2Usk_YVIN_Fdmmeaa82nBP_fRfxEhS0IP62q-QodtzYi5P9jQ5 Password: 1p#@6+s6

Sally Jakub, Recording Secretary

**SCHUYLER COMMUNITY SCHOOLS
MONTHLY DISBURSEMENT REPORT
For the month of JUNE 2020**

Check #	Date	Vendor	Description	Amount
41630	6/8/2020	Agri-City Insurance Agency LLC	insurance	\$159,877.00
41631	6/8/2020	Julie Albers	mileage	\$578.46
41632	6/8/2020	SYNCB/AMAZON	supplies	\$13,264.40
41633	6/8/2020	Americom Communications	contracted serv	\$1,302.50
41634	6/8/2020	Apex Learning	Credit recovery program	\$19,200.00
41635	6/8/2020	Apple Computer, Inc.	I Pads, computers	\$46,909.00
41636	6/8/2020	Awards & Engraving	retirement gifts	\$325.00
41637	6/8/2020	Jill Bailey	mileage	\$214.27
41638	6/8/2020	Best Buy Business Advantage Account	Samsung LEDs	\$18,883.71
41639	6/8/2020	Black Hills Energy	natural gas	\$73.70
41640	6/8/2020	BOMGAARS	supplies	\$813.49
41641	6/8/2020	Carrier Enterprise, LLC	supplies	\$787.90
41642	6/8/2020	Casey's Business MasterCard	fuel	\$61.25
41643	6/8/2020	CenturyLink	phone	\$201.43
41644	6/8/2020	CenturyLink	phone	\$2,830.43
41645	6/8/2020	Central Nebraska Rehab Services	OT/PT services	\$9,390.80
41646	6/8/2020	CHI Health	physicals	\$300.00
41647	6/8/2020	Central Nebraska Comm. Action Partner., Inc	3rd qtr billing	\$32,218.74
41648	6/8/2020	Computer Information Concepts, Inc.	Workflow implementation	\$5,372.00
41649	6/8/2020	Cornhusker Public Power District	electricity	\$817.90
41650	6/8/2020	Culligan Water Conditioning	soft water plan	\$82.10
41651	6/8/2020	Cyber Acoustics	headsets	\$262.50
41652	6/8/2020	Daniel F Baumert	contracted service	\$323.90
41653	6/8/2020	David City Public School	SPED services	\$5,976.47
41654	6/8/2020	Department Of Utilities	utilities	\$17,614.34
41655	6/8/2020	Didier Grocery	Sixpence gift cards	\$5,800.00
41656	6/8/2020	Theresa Dietrich	mileage	\$257.12
41657	6/8/2020	Kara Dinslage	mileage	\$207.70
41658	6/8/2020	Discovery Education, Inc.	HS STEM/DLC PD	\$12,500.00
41659	6/8/2020	Eagle Broadband	internet	\$1,990.85
41660	6/8/2020	Eakes Office Products Center	Admin fee	\$3.50
41661	6/8/2020	EBSCO	MS library periodicals	\$633.91
41662	6/8/2020	Laura Eisenmann	mileage	\$314.02
41663	6/8/2020	Electrical Engineering & Equipment Co	generator repair	\$1,905.96
41664	6/8/2020	April Elliot	mileage	\$1,069.67
41665	6/8/2020	ESU 7 Distance learning	Dist Learn 20-21 member fee	\$2,800.00
41666	6/8/2020	ESU #7 Special Education	SPED services	\$60,924.19
41667	6/8/2020	FileWave USA Inc	ipad licenses	\$276.00
41668	6/8/2020	FP Mailing Solutions	meter supplies	\$492.00
41669	6/8/2020	Fremont Winnelson Co	supplies	\$681.93
41670	6/8/2020	Frontier	phone	\$101.43
41671	6/8/2020	Cecil Hahn	mileage	\$817.56
41672	6/8/2020	Harris School Solutions	AE & Self Service Support	\$1,224.62
41673	6/8/2020	Hometown Leasing	copier lease	\$2,480.00
41674	6/8/2020	Jackson Services Inc	linens	\$861.40
41675	6/8/2020	Amanda Jedlicka	Mileage	\$544.31
41676	6/8/2020	Johnstone Supply	supplies	\$130.20

41677	6/8/2020	John's Tire Sales & Services	repair	\$30.00
41678	6/8/2020	Jostens, Inc	diplomas	\$890.96
41679	6/8/2020	Kelly Supply Company	supplies	\$142.67
41680	6/8/2020	Galen Kluck	tower equip rent	\$60.00
41681	6/8/2020	Eve Kronberg	mileage	\$680.36
41682	6/8/2020	Lincoln Journal Star	board minutes	\$238.18
41683	6/8/2020	Matheson Trigas	ag supplies	\$70.85
41684	6/8/2020	Brandon McCulloch	mileage	\$535.66
41685	6/8/2020	Cathy Mundil	mileage	\$874.31
41686	6/8/2020	Nebraska.gov	driver record subscription	\$187.00
41687	6/8/2020	Nebraska Public Health Environmental Lab	water testing	\$488.00
41688	6/8/2020	Dean Novak	Annual easement	\$240.00
41689	6/8/2020	Northwest Evaluation Association	MAP resources	\$15,337.50
41690	6/8/2020	One Source	background checks	\$280.00
41691	6/8/2020	Omaha Public Power District	electricity	\$79.59
41692	6/8/2020	Parkview One Stop LLC	fuel	\$113.75
41693	6/8/2020	Presto-X	pest control	\$329.00
41694	6/8/2020	Qc Supply, Llc	supplies	\$107.43
41695	6/8/2020	Quill	supplies	\$63.64
41696	6/8/2020	Jason Ratzlaff	mileage	\$690.80
41697	6/8/2020	Diane Sandoval	mileage	\$972.36
41698	6/8/2020	Schuyler Home & Building Supply	supplies	\$1,200.63
41699	6/8/2020	SectorNow, LLC	2020 Alumni touch display	\$467.50
41700	6/8/2020	Siteone Landscape Supply Inc	fertilizer	\$810.72
41701	6/8/2020	TBP Productions, LLP	website hosting	\$400.00
41702	6/8/2020	Staples Credit Plan	supplies	\$487.44
41703	6/8/2020	Megan Sucha	mileage	\$153.29
41704	6/8/2020	Roxann Thompson	mileage	\$556.24
41705	6/8/2020	United States Postmaster	postage	\$137.78
41706	6/8/2020	Verizon Wireless	cell phones	\$509.04
41707	6/8/2020	Virco	HS science chairs	\$1,076.40
41708	6/8/2020	Visa	supplies	\$154.27
41709	6/8/2020	VISA	Sixpence supplies	\$9,438.79
41710	6/8/2020	WageWorks	Admin fees	\$220.00
41711	6/8/2020	Waste Connections of NE, Inc.	sanitation service	\$1,030.00
41712	6/8/2020	Michael Williams	mileage	\$1,194.97
41713	6/8/2020	Roger Williams	mileage	\$1,071.33
41714	6/8/2020	Sarah Woehl	mileage	\$1,382.07
41715	6/8/2020	Kristi Wolfe	mileage	\$590.69
20-06-01	6/9/2020	Martha Arroyo	mileage	\$1,909.82
20-06-02	6/9/2020	Eugene Barr	Bus permit	\$64.50
20-06-03	6/9/2020	Ashley Faltin	tuition reimbursement	\$1,200.00
20-06-04	6/9/2020	Guillermo Gutierrez	bus permit	\$63.50
20-06-05	6/9/2020	Donald Maxwell	tuition reimbursement	\$600.00
20-06-06	6/9/2020	Mairen Montanez	tuition reimbursement	\$1,200.00
TOTAL GENERAL FUND DISBURSEMENTS				\$482,028.70

2220	6/8/2020	Columbus Carpet, Inc	MS flooring	\$4,250.00
2221	6/8/2020	George Nelson	Preschool windows	\$1,080.36
2222	6/8/2020	Sizeable Storage Solutions, LLC	bus barn rent	\$5,700.00
TOTAL DEPRECIATION FUND DISBURSEMENTS				\$11,030.36

1392	6/8/2020	The Clark Enersen Partners	professional services	\$6,899.70
1393	6/8/2020	Hausmann Construction, Inc.	payment	\$817,235.93
1394	6/8/2020	KS' Studio LLC	architect services	\$3,906.09
1395	6/8/2020	Love Signs, Inc.	new district sign	\$36,885.51
1396	6/8/2020	Mid-States School Equipment Co inc	New auditorium seating	\$15,185.60
1397	6/8/2020	Mid-State Engineering & Testing Inc	field/lab work	\$1,655.00
TOTAL SPECIAL BUILDING FUND DISBURSEMENTS				\$881,767.83

3206	6/8/2020	CenturyLink	phone	\$242.62
TOTAL COOPERATIVE FUND DISBURSEMENTS				\$242.62

SCHUYLER COMMUNITY SCHOOLS
MONTHLY DISBURSEMENT REPORT over \$5000
For the month of JUNE 2020

Check #	Date	Vendor	Description	Amount
41630	6/8/2020	Agri-City Insurance Agency LLC	insurance	\$159,877.00
41666	6/8/2020	ESU #7 Special Education	SPED services	\$60,924.19
41635	6/8/2020	Apple Computer, Inc.	I Pads, computers	\$46,909.00
41647	6/8/2020	Central Nebraska Comm. Action Partner., Inc	3rd qtr billing	\$32,218.74
41634	6/8/2020	Apex Learning	Credit recovery program	\$19,200.00
41638	6/8/2020	Best Buy Business Advantage Account	Samsung LEDs	\$18,883.71
41654	6/8/2020	Department Of Utilities	utilities	\$17,614.34
41689	6/8/2020	Northwest Evaluation Association	MAP resources	\$15,337.50
41632	6/8/2020	SYNCB/AMAZON	supplies	\$13,264.40
41658	6/8/2020	Discovery Education, Inc.	HS STEM/DLC PD	\$12,500.00
41709	6/8/2020	VISA	Sixpence supplies	\$9,438.79
41645	6/8/2020	Central Nebraska Rehab Services	OT/PT services	\$9,390.80
41653	6/8/2020	David City Public School	SPED services	\$5,976.47
41655	6/8/2020	Didier Grocery	Sixpence gift cards	\$5,800.00
41648	6/8/2020	Computer Information Concepts, Inc.	Workflow implementation	\$5,372.00
TOTAL GENERAL FUND DISBURSEMENTS				\$432,706.94
2222	6/8/2020	Sizeable Storage Solutions, LLC	bus barn rent	\$5,700.00
TOTAL DEPRECIATION FUND DISBURSEMENTS				\$5,700.00
1393	6/8/2020	Hausmann Construction, Inc.	payment	\$817,235.93
1395	6/8/2020	Love Signs, Inc.	new district sign	\$36,885.51
1396	6/8/2020	Mid-States School Equipment Co inc	New auditorium seating	\$15,185.60
1392	6/8/2020	The Clark Enersen Partners	professional services	\$6,899.70
TOTAL SPECIAL BUILDING FUND DISBURSEMENTS				\$876,206.74

Current Cash Balance

Sorted by Site ID, Group ID, Activity ID.
From 05/01/2020 to 05/29/2020.

Site ID Group ID	Site Name Group Name	Activity ID	Activity Name	Beginning Cash	Receipts	Disbursements	Adjustments	Cash Balance
SCHUYL Schuyler Community Schools								
A ACADEMIC								
1100	CONSORTIUM PAYROLL			232.84	0.00	0.00	0.00	232.84
1500	ARC EQUIP SPEC.ED.			260.85	0.00	1,409.32	0.00	-1,148.47
A Totals:				493.69	0.00	1,409.32	0.00	-915.63
B ATHLETIC								
2100	BASKETBALL B			-12,871.11	0.00	0.00	0.00	-12,871.11
2150	BASKETBALL G			-8,345.98	0.00	0.00	0.00	-8,345.98
2200	CROSS COUNTRY B & G			-1,152.86	0.00	0.00	0.00	-1,152.86
2250	CROSS COUNTRY			0.00	0.00	0.00	0.00	0.00
2300	FOOTBALL			-19,797.87	0.00	2,067.00	0.00	-21,864.87
2350	GOLF B			-1,680.85	0.00	0.00	0.00	-1,680.85
2375	GOLF G			-1,290.73	0.00	0.00	0.00	-1,290.73
2400	SOFTBALL			-1,744.20	0.00	0.00	0.00	-1,744.20
2450	SOCCER B			-6,317.15	0.00	0.00	0.00	-6,317.15
2500	SOCCER G			-1,278.28	0.00	0.00	0.00	-1,278.28
2600	TRACK			-5,885.43	0.00	0.00	0.00	-5,885.43
2700	VOLLEYBALL			-2,656.97	0.00	0.00	0.00	-2,656.97
2750	WRESTLING			-34,541.64	0.00	0.00	0.00	-34,541.64
2755	WEIGHT ROOM EQUIPMENT			369.86	0.00	0.00	0.00	369.86
2800	SMS ATHLETICS			-18,066.64	0.00	171.00	0.00	-18,237.64
2850	LAUNDRY			0.00	0.00	0.00	0.00	0.00
2900	GENERAL			49,117.32	0.00	2,698.65	0.00	46,418.67
2950	MEDICAL			-7,168.25	0.00	0.00	0.00	-7,168.25
2970	BOOSTER CLUB DONATION			-59.65	0.00	2,899.00	0.00	-2,958.65
2975	DONATIONS			7,388.37	0.00	90.95	0.00	7,297.42
B Totals:				-65,982.06	0.00	7,926.60	0.00	-73,908.66
C DISTRICT								
3100	ADULT EDUCATION			3,833.68	0.00	0.00	0.00	3,833.68
3110	COLLEGE CREDIT			-52,905.50	0.00	15,120.00	0.00	-68,025.50
3200	GENERAL			44,025.69	293.79	724.56	0.00	43,594.92
3250	FIELD HOUSE			19,943.00	0.00	0.00	0.00	19,943.00
3300	FINES			1,268.22	0.00	0.00	0.00	1,268.22
3400	HIGH SCHOOL--- BOOK FINES			4,055.16	0.00	0.00	0.00	4,055.16
C Totals:				20,220.25	293.79	15,844.56	0.00	4,669.48
D DEPARTMENTS								
3450	SCHS LIBRARY FINES			287.98	700.00	0.00	0.00	987.98
4000	BAND			2,352.11	0.00	600.00	0.00	1,752.11
4025	Musical			4,449.84	0.00	0.00	0.00	4,449.84
4050	VOCAL			231.87	0.00	5.00	0.00	226.87
4750	KOEHN TRUST (BAND DONATION)			16,083.80	517.90	0.00	0.00	16,601.70
D Totals:				23,405.60	1,217.90	605.00	0.00	24,018.50

Current Cash Balance

Sorted by Site ID, Group ID, Activity ID.
From 05/01/2020 to 05/29/2020.

Site ID Group ID	Site Name Group Name	Activity ID	Activity Name	Beginning Cash	Receipts	Disbursements	Adjustments	Cash Balance
E	UNIFORMS & EQUIPMENT							
	4500		BAND (UNIFORM DEP)	828.18	0.00	0.00	0.00	828.18
	4650		FLAG CORPS	833.28	0.00	0.00	0.00	833.28
	4700		INSTRUMENT RENTAL	0.00	0.00	0.00	0.00	0.00
	4770		AMBASSADORS	1,839.30	0.00	0.00	0.00	1,839.30
		E	Totals:	3,500.76	0.00	0.00	0.00	3,500.76

Current Cash Balance

Sorted by Site ID, Group ID, Activity ID.
From 05/01/2020 to 05/29/2020.

Site ID Group ID	Site Name Group Name	Activity ID	Activity Name	Beginning Cash	Receipts	Disbursements	Adjustments	Cash Balance
F	CLUBS ORGANIZATIONS							
5000	ART			681.73	0.00	0.00	0.00	681.73
5005	ATHS			573.39	0.00	0.00	0.00	573.39
5050	CHEERLEADERS			-278.21	600.00	404.60	0.00	-82.81
5100	DRAMATICS, SPEECH			-3,516.65	0.00	0.00	0.00	-3,516.65
5105	One Act			-4,583.48	0.00	0.00	0.00	-4,583.48
5150	DANCE TEAM			-329.76	0.00	239.95	0.00	-569.71
5175	EMERGENCY RESPNSE TEAM			3,094.77	0.00	0.00	0.00	3,094.77
5200	FFA			14,905.03	0.00	0.00	0.00	14,905.03
5250	FCCLA			2,979.95	0.00	821.08	0.00	2,158.87
5300	CULTURAL UNITY			689.50	0.00	0.00	0.00	689.50
5350	NATIONAL HONOR SOCIETY			1,461.81	104.00	0.00	0.00	1,565.81
5400	S-CLUB			402.01	0.00	300.00	0.00	102.01
5405	SPIRIT CLUB			157.93	0.00	0.00	0.00	157.93
5425	WARRIORS STAND FOR THE SILENT			183.52	0.00	0.00	0.00	183.52
5500	SCIENCE & mATH cLUB			5,478.64	0.00	0.00	0.00	5,478.64
5510	SCIENCE TRIP			31.26	0.00	0.00	0.00	31.26
5515	INDUST. TECH GRANT SCHS			2,000.00	0.00	0.00	0.00	2,000.00
5525	SCIENCE FAIR			746.17	0.00	0.00	0.00	746.17
5550	STUDENT COUNCIL			5,441.66	0.00	261.05	0.00	5,180.61
5575	504 R ACTIVITY FUND			319.22	0.00	0.00	0.00	319.22
5600	RICHLAND ACTIVITY FUND			44.15	15.40	155.93	0.00	-96.38
5610	FISHER 24 ACTIVITY FUND			4,969.89	2.20	100.00	0.00	4,872.09
5620	SCHUYLER ELEMENTARY SCHOOL			369.48	0.00	366.00	0.00	3.48
5621	SES FELICIATIONS			0.00	0.00	0.00	0.00	0.00
5622	SES FIELD DAY			7,125.30	0.00	0.00	0.00	7,125.30
5623	SES Vocal Music Club			1,110.15	0.00	0.00	0.00	1,110.15
5624	SES LIBRARY			2,156.88	0.00	0.00	0.00	2,156.88
5631	SES POP FUND			1,181.04	0.00	0.00	0.00	1,181.04
5632	SES Band CLUB			237.90	0.00	0.00	0.00	237.90
5633	SES STEM			6,945.25	0.00	0.00	0.00	6,945.25
5650	BRAINSTORMING			0.00	0.00	0.00	0.00	0.00
5675	TEEN MOM'S			133.86	0.00	0.00	0.00	133.86
5700	A.S.K.			1,609.80	0.00	0.00	0.00	1,609.80
5725	STUDENT COUNCIL MAKE A WISH			1,129.37	120.00	0.00	0.00	1,249.37
5750	FELLOWSHIP CHRISTIANS FOR ATHLETICS			84.43	0.00	0.00	0.00	84.43
5775	INDUSTRIAL TECH ACCOUNT			0.00	0.00	0.00	0.00	0.00
5800	SHEEL CREEK WATER TESTING			0.00	0.00	0.00	0.00	0.00
5825	PRESCHOOL			436.23	0.00	0.00	0.00	436.23
5900	SMS GENERAL ACTIVITY			1,714.59	0.00	411.25	0.00	1,303.34
5901	SMS STUDENT COUNCIL			10,710.99	0.00	0.00	0.00	10,710.99
5902	SMS LIBRARY			3,173.94	740.00	0.00	0.00	3,913.94
5903	SMS RESOURCE ROOM			4,680.90	0.00	0.00	0.00	4,680.90
5904	SMS BAND CLUB			890.54	0.00	0.00	0.00	890.54
5905	SMS TEACHER POP 7702463			21.02	0.00	0.00	0.00	21.02

Current Cash Balance

Sorted by Site ID, Group ID, Activity ID.
From 05/01/2020 to 05/29/2020.

Site ID Group ID	Site Name Group Name	Activity ID	Activity Name	Beginning Cash	Receipts	Disbursements	Adjustments	Cash Balance
		5906	SMS EDUCATIONQUEST FOUNDATION GRANT	750.00	0.00	0.00	0.00	750.00
		5907	SMS Entrepreneurship	0.00	0.00	0.00	0.00	0.00
		5909	SMS VOCAL MUSIC	3.25	0.00	0.00	0.00	3.25
		5910	SMS VOLLEYBALL CLUB	267.23	300.00	0.00	0.00	567.23
		5911	SMS YEARBOOK	1,046.48	0.00	0.00	0.00	1,046.48
		5915	SMS WRESTLING CLUB	495.68	0.00	0.00	0.00	495.68
		5920	SMS FOOTBALL CLUB	67.80	960.00	0.00	0.00	1,027.80
		5925	SMS BOYS BASKETBALL CLUB	475.53	0.00	0.00	0.00	475.53
		5926	SMS GIRLS BASKETBALL	0.00	0.00	0.00	0.00	0.00
		5930	YOUTH FOOTBALL	1,104.92	0.00	0.00	0.00	1,104.92
		5935	YOUTH SPORTS	3,186.52	0.00	0.00	0.00	3,186.52
			F Totals:	86,561.61	2,841.60	3,059.86	0.00	86,343.35
G			CONCESSION/VENDING					
		6000	CONCESSION	3,728.26	0.00	0.00	0.00	3,728.26
		6010	Imp. Fund-10%	2,832.43	0.00	0.00	0.00	2,832.43
		6100	SCHS PEPSI 7701503	9,298.92	0.00	0.00	0.00	9,298.92
		6125	SCHS LUNCH PEPSI	0.00	0.00	0.00	0.00	0.00
		6150	SCS FIELD HOUSE POP	2,851.83	0.00	0.00	0.00	2,851.83
		6200	STUDENT POP	972.56	0.00	0.00	0.00	972.56
		6300	TEACHER POP	4,736.50	0.00	0.00	0.00	4,736.50
		6400	S-CLUB JUICE	43.18	0.00	0.00	0.00	43.18
		6500	MAINTENANCE	8,070.33	0.00	0.00	0.00	8,070.33
		6600	MILK MACHINE - FCCLA	171.53	0.00	0.00	0.00	171.53
			G Totals:	32,705.54	0.00	0.00	0.00	32,705.54

Current Cash Balance

Sorted by Site ID, Group ID, Activity ID.
From 05/01/2020 to 05/29/2020.

Site ID Group ID	Site Name Group Name	Activity ID	Activity Name	Beginning Cash	Receipts	Disbursements	Adjustments	Cash Balance
H	SALES							
	7000		HORTICULTURE	8,093.16	5,502.00	0.00	0.00	13,595.16
	7010		HOUSE CONSTRUCTION	1,758.68	0.00	0.00	0.00	1,758.68
	7020		HOUSE RENTAL	23,500.36	0.00	0.00	0.00	23,500.36
	7050		PLASMA CAM SALES	3,669.78	0.00	0.00	0.00	3,669.78
	7150		BBB CLUB ACCOUNT	1,192.55	0.00	0.00	0.00	1,192.55
	7200		GBB CLUB ACCOUNT	758.96	0.00	0.00	0.00	758.96
	7215		BOYS GOLF CLUB ACCT.	2,726.11	448.00	0.00	0.00	3,174.11
	7225		GIRLS GOLF CLUB ACCOUNT	914.07	0.00	0.00	0.00	914.07
	7250		WRESTLING CLUB ACCOUNT	5,766.03	0.00	0.00	0.00	5,766.03
	7275		WRESTLING AIDS	385.83	0.00	0.00	0.00	385.83
	7300		BSOC CLUB ACCOUNT	4,156.33	0.00	1,286.36	0.00	2,869.97
	7325		GSOC CLUB ACCOUNT	4,272.69	320.00	0.00	0.00	4,592.69
	7350		G/B CROSS COUNTRY CLUB	1,241.70	0.00	0.00	0.00	1,241.70
	7400		FOOTBALL CLUB ACCOUNT	6,319.02	0.00	384.00	0.00	5,935.02
	7450		VOLLEYBALL CLUB ACCT.	9,897.57	0.00	0.00	0.00	9,897.57
	7500		SB CLUB ACCOUNT	1,103.17	0.00	0.00	0.00	1,103.17
	7550		STUDENT PURCHASES	243.66	0.00	0.00	0.00	243.66
	7600		TR. CLUB ACCT	2,480.94	0.00	0.00	0.00	2,480.94
		H	Totals:	78,480.61	6,270.00	1,670.36	0.00	83,080.25
I	CLASSES							
	8000		ALUMNI ACCOUNT	1,386.24	0.00	0.00	0.00	1,386.24
	8255		CLASSES OF 2013	719.22	0.00	0.00	0.00	719.22
	8260		CLASS 2014	382.63	0.00	0.00	0.00	382.63
	8265		CLASS OF 2015	219.65	0.00	0.00	0.00	219.65
	8270		CLASS OF 2016	274.99	0.00	0.00	0.00	274.99
	8275		CLASS OF 2017	1,306.71	0.00	0.00	0.00	1,306.71
	8280		CLASS 2018	96.87	0.00	0.00	0.00	96.87
	8285		CLASS OF 2019	632.82	0.00	0.00	0.00	632.82
	8290		CLASS OF 2020	1,056.60	0.00	0.00	0.00	1,056.60
	8295		CLASS OF 2021	1,925.97	0.00	105.99	0.00	1,819.98
	8300		Class of 2022	144.00	0.00	0.00	0.00	144.00
	8305		CLASS OF 2023	-100.00	0.00	0.00	0.00	-100.00
	8320		CLASS OF 2026	561.53	0.00	0.00	0.00	561.53
	8325		CLASS OF 2027	547.26	0.00	0.00	0.00	547.26
	8330		CLASS OF 2028	451.48	0.00	0.00	0.00	451.48
	8335		CLASS OF 2029	22.48	0.00	138.60	0.00	-116.12
	8340		CLASS OF 2030	1,590.95	0.00	118.00	0.00	1,472.95
	8345		CLASS OF 2031	439.44	0.00	0.00	0.00	439.44
	8350		Class of 2032	161.48	0.00	0.00	0.00	161.48
		I	Totals:	11,820.32	0.00	362.59	0.00	11,457.73

Current Cash Balance

Sorted by Site ID, Group ID, Activity ID.
From 05/01/2020 to 05/29/2020.

Site ID Group ID	Site Name Group Name	Activity ID	Activity Name	Beginning Cash	Receipts	Disbursements	Adjustments	Cash Balance
J	YEARBOOK							
	8560		YEARBOOK	5,977.69	200.00	0.00	0.00	6,177.69
		J	Totals:	5,977.69	200.00	0.00	0.00	6,177.69
K	MISCELLANEOUS							
	9000		STUDENT COUNCIL SCHOOL IMPROVMENT FUND	1,304.25	0.00	0.00	0.00	1,304.25
	9025		SAVE THE CHILDREN	300.00	0.00	0.00	0.00	300.00
	9030		AFTERSCHOOL PROGRAM	94,540.91	275.00	0.00	0.00	94,815.91
	9035		SIXPENSE	456.12	0.00	0.00	0.00	456.12
	9040		SES BACK PACK PROGRAM	3,520.00	0.00	2,528.17	0.00	991.83
	9045		BUILDING HEALTHY RELATIONSHIPS.	9,885.37	0.00	0.00	0.00	9,885.37
	9050		STAFF INSURANCE PURCHASES	356.02	25.82	61.09	0.00	320.75
	9075		KEY DEPOSITS & RENTAL FEES	7,672.25	0.00	0.00	0.00	7,672.25
	9100		BLOOD MOBILE	-131.56	0.00	0.00	0.00	-131.56
	9105		WELLNESS WARRIORS	3,524.77	0.00	0.00	0.00	3,524.77
	9110		PTO WELLNESS DAY DONATION	5,950.00	0.00	0.00	0.00	5,950.00
	9115		LUNCH CARD	2,446.05	0.00	0.00	0.00	2,446.05
	9125		TMH	71.20	0.00	0.00	0.00	71.20
	9150		PRINCIPAL	-129.90	0.00	0.00	0.00	-129.90
	9175		Technology Fee	38,058.50	60.00	0.00	0.00	38,118.50
		K	Totals:	167,823.98	360.82	2,589.26	0.00	165,595.54
L	SCHOLARSHIPS/MEMORIALS							
	9200		TOUR	176.57	0.00	0.00	0.00	176.57
	9500		COLLEGE ACCESS GRANT	4,554.30	323.00	0.00	0.00	4,877.30
		L	Totals:	4,730.87	323.00	0.00	0.00	5,053.87
		SCHUYL Totals:		369,738.86	11,507.11	33,467.55	0.00	347,778.42
		Report Totals:		369,738.86	11,507.11	33,467.55	0.00	347,778.42

REVENUE REPORT		2012-13	%	2013-14	%	2014-15	%	2015-16	%	2016-17	%	2017-18	%	2018-19	%	2019-20	%
September Total		\$3,243,881.77	20.04%	\$3,265,998.95	18.78%	\$3,689,300.73	17.69%	\$3,777,399.57	18.11%	\$3,834,741.76	18.88%	\$4,269,068.23	21.29%	\$4,203,426.68	19.61%	\$4,094,118.24	19.10%
Local/County		\$2,721,533.23	29.79%	\$2,722,697.71	27.36%	\$2,959,876.38	25.25%	\$3,296,850.19	25.42%	\$3,244,512.16	24.10%	\$3,616,567.87	24.80%	\$3,871,636.68	25.65%	\$3,604,268.24	24.38%
State		\$486,165.87	8.37%	\$517,078.69	8.34%	\$581,961.52	8.41%	\$406,284.76	7.95%	\$405,292.50	8.03%	\$318,484.56	8.39%	\$327,782.00	7.31%	\$440,597.00	8.66%
Federal		\$35,044.21	2.85%	\$26,108.00	2.12%	\$147,462.83	6.66%	\$74,077.43	2.66%	\$184,795.20	10.34%	\$334,015.80	20.00%	\$4,008.00	0.22%	\$49,218.00	3.17%
Other		\$1,118.46	11.18%	\$1,144.55	1.15%	\$0.00	0.00%	\$187.19	1.87%	\$141.90	1.42%	\$0.00	0.00%	\$0.00	0.00%	\$35,000.00	0.31%
October Total		\$800,294.79	24.99%	\$849,385.19	23.67%	\$819,772.20	21.62%	\$919,934.61	22.52%	\$800,032.03	22.82%	\$812,931.69	25.34%	\$681,958.11	27.79%	\$1,377,824.61	25.52%
Local/County		\$269,910.85	32.75%	\$259,569.32	29.96%	\$225,885.97	27.18%	\$465,936.80	29.02%	\$355,056.80	26.72%	\$334,446.13	27.10%	\$325,663.51	27.80%	\$596,074.99	28.41%
State		\$493,020.87	16.85%	\$523,529.69	16.79%	\$588,572.52	16.92%	\$444,247.15	16.65%	\$416,054.50	16.27%	\$384,749.00	15.89%	\$341,484.00	14.93%	\$391,391.00	16.34%
Federal		\$3,348.14	5.70%	\$3,548.58	6.82%	\$3,548.58	6.62%	\$9,750.51	3.02%	\$30,675.73	12.06%	\$193,736.56	31.60%	\$15,411.60	1.05%	\$390,312.22	28.31%
Other		\$2,314.94	34.33%	\$2,065.13	20.65%	\$0.00	0.00%	\$0.00	1.87%	\$245.00	3.87%	\$0.00	0.00%	\$0.00	0.00%	\$46,400.00	0.73%
November Total		\$681,651.52	29.20%	\$704,918.79	25.00%	\$704,918.79	25.00%	\$841,237.42	26.56%	\$934,567.57	27.42%	\$404,661.44	27.36%	\$647,571.18	25.81%	\$771,613.90	29.12%
Local/County		\$95,304.63	33.79%	\$112,741.80	31.10%	\$98,109.77	28.01%	\$115,861.20	29.91%	\$138,699.52	27.90%	\$111,941.11	27.87%	\$179,813.65	28.99%	\$197,185.63	29.74%
State		\$483,165.87	25.09%	\$515,078.69	25.09%	\$581,961.52	25.33%	\$405,292.50	16.65%	\$405,292.50	24.30%	\$274,019.00	23.11%	\$327,782.00	22.24%	\$468,434.00	25.55%
Federal		\$97,466.14	13.62%	\$35,415.49	5.03%	\$24,291.13	7.92%	\$723,064.57	29.03%	\$370,575.55	32.80%	\$71,103.33	32.03%	\$139,975.53	8.62%	\$105,878.47	35.13%
Other		\$5,714.88	9.14%	\$7,483.63	735.35%	\$556.37	26.22%	\$2,311.65	24.99%	\$3,800.00	3.87%	\$11,598.00	115.98%	\$0.00	0.00%	\$115,800.00	1.77%
December Total		\$862,123.68	34.53%	\$800,090.95	32.13%	\$894,066.37	32.52%	\$1,243,678.07	32.52%	\$863,838.51	31.68%	\$683,867.94	30.77%	\$745,256.34	29.28%	\$896,769.14	33.31%
Local/County		\$272,803.54	36.78%	\$192,538.93	33.03%	\$226,629.75	29.95%	\$307,081.16	32.28%	\$266,290.80	29.88%	\$264,179.54	29.68%	\$295,717.34	30.95%	\$92,217.14	30.37%
State		\$569,949.77	34.98%	\$607,161.60	34.89%	\$655,231.52	34.80%	\$14,668.35	34.57%	\$405,292.50	32.33%	\$395,674.00	33.54%	\$449,485.00	32.27%	\$492,476.00	35.22%
Federal		\$3,417.77	13.90%	\$0.00	5.03%	\$7,379.81	8.25%	\$11,844.10	9.25%	\$192,255.21	43.36%	\$24,014.40	33.47%	\$0.00	8.63%	\$312,026.00	55.23%
Other		\$15,952.50	251.00%	\$390.33	739.26%	\$5,365.29	79.87%	\$7,074.04	95.73%	\$0.00	3.87%	\$0.00	0.00%	\$0.00	0.00%	\$50,000.00	2.22%
January total		\$1,292,143.75	42.51%	\$2,125,248.63	44.35%	\$1,840,957.36	38.12%	\$2,258,459.02	43.35%	\$1,894,173.38	41.00%	\$2,829,527.97	44.88%	\$2,143,935.43	39.29%	\$1,990,036.12	42.59%
Local/County		\$665,610.57	44.07%	\$1,194,008.87	45.03%	\$1,173,520.62	39.12%	\$1,324,921.74	42.50%	\$1,361,047.88	39.98%	\$1,549,462.72	40.31%	\$1,453,969.16	40.60%	\$1,494,719.34	40.48%
State		\$572,198.87	44.83%	\$606,631.69	44.67%	\$655,231.52	44.27%	\$931,190.66	52.80%	\$522,738.50	42.68%	\$521,133.00	47.27%	\$387,974.82	45.39%	\$492,476.00	44.89%
Federal		\$44,861.18	17.55%	\$324,573.84	31.44%	\$1,844.10	8.79%	\$2,346.62	11.94%	\$3,899.88	72.77%	\$758,932.25	78.91%	\$98,991.45	13.97%	\$2,840.78	55.41%
Other		\$9,473.13	34.57%	\$34.23	739.60%	\$361.12	83.48%	\$0.00	95.73%	\$6,889.88	72.77%	\$0.00	0.00%	\$0.00	0.00%	\$0.00	2.22%
February Total		\$1,220,138.54	50.05%	\$1,148,504.60	50.96%	\$1,728,208.84	46.41%	\$852,443.43	47.44%	\$1,182,532.68	46.82%	\$968,000.97	49.70%	\$1,506,024.77	46.31%	\$1,099,000.32	47.71%
Local/County		\$247,669.25	46.84%	\$255,338.86	42.14%	\$362,178.17	44.52%	\$325,338.86	42.14%	\$285,384.80	47.20%	\$346,579.55	42.68%	\$484,057.23	43.81%	\$309,750.97	42.57%
State		\$845,016.92	59.37%	\$891,484.60	59.05%	\$1,030,370.73	59.16%	\$523,430.65	63.05%	\$735,559.01	57.25%	\$621,370.07	63.64%	\$680,247.54	60.56%	\$769,209.02	60.01%
Federal		\$3,615.29	17.84%	\$8,725.67	32.15%	\$442,490.25	28.78%	\$66,834.61	32.04%	\$161,430.75	52.79%	\$341,720.00	78.91%	\$341,720.00	32.45%	\$20,040.33	56.70%
Other		\$118,572.89	153.14%	\$625.08	745.85%	\$0.00	83.48%	\$3,488.00	95.73%	\$1,581.12	74.35%	\$51.35	116.49%	\$0.00	0.00%	\$0.00	2.22%
March total		\$1,555,657.68	59.66%	\$1,088,408.12	57.22%	\$1,211,095.78	52.21%	\$1,513,121.85	54.70%	\$876,612.25	51.14%	\$1,614,261.92	57.75%	\$1,197,908.35	51.90%	\$1,576,841.46	55.07%
Local/County		\$452,827.33	51.79%	\$322,560.66	50.76%	\$425,766.41	45.77%	\$485,798.34	48.27%	\$343,463.17	44.65%	\$874,833.73	48.68%	\$735,622.34	48.68%	\$1,050,597.26	49.68%
State		\$575,647.87	69.28%	\$628,738.00	69.19%	\$664,297.52	68.23%	\$500,780.51	72.85%	\$523,290.50	67.50%	\$505,145.00	70.63%	\$451,351.00	70.63%	\$505,545.00	69.94%
Federal		\$526,637.48	60.66%	\$136,430.87	43.25%	\$120,632.85	34.26%	\$515,712.32	50.59%	\$9,786.44	53.33%	\$232,369.39	92.82%	\$10,874.49	33.03%	\$20,699.20	58.04%
Other		\$545.00	1536.91%	\$688.59	752.73%	\$399.00	87.47%	\$10,830.68	204.04%	\$72.14	75.07%	\$1,913.80	135.63%	\$60.52	0.61%	\$0.00	2.22%
April Total		\$1,171,427.67	66.91%	\$1,633,241.15	66.61%	\$1,863,742.31	61.15%	\$2,030,684.75	64.43%	\$2,086,145.70	63.49%	\$1,883,637.98	67.14%	\$1,790,266.77	60.25%	\$2,828,317.75	68.26%
Local/County		\$549,372.21	57.81%	\$1,008,894.58	60.89%	\$998,763.70	54.29%	\$1,277,509.82	58.12%	\$1,354,835.34	54.72%	\$1,226,461.20	57.09%	\$1,335,750.77	57.53%	\$1,389,422.05	59.08%
State		\$534,523.87	78.48%	\$608,417.69	79.01%	\$684,985.53	78.66%	\$509,797.76	82.83%	\$530,337.50	78.12%	\$130,411.00	80.39%	\$452,516.00	80.72%	\$566,734.00	81.07%
Federal		\$87,131.59	67.75%	\$13,969.09	44.39%	\$180,493.08	42.38%	\$243,077.17	59.34%	\$619,472.86	124.31%	\$2,000.00	124.31%	\$2,000.00	33.14%	\$872,161.70	114.21%
Other		\$400.00	1540.91%	\$1,959.79	772.33%	\$0.00	87.47%	\$300.00	207.04%	\$3,500.00	110.07%	\$0.00	0.00%	\$0.00	0.61%	\$0.00	2.22%
May Total		\$3,940,649.71	91.25%	\$3,932,891.88	89.23%	\$4,708,506.23	83.75%	\$4,701,494.65	86.98%	\$5,182,724.79	89.01%	\$5,392,764.13	94.03%	\$4,923,775.77	83.22%	\$4,918,720.22	91.21%
Local/County		\$3,020,817.05	91.64%	\$3,268,977.47	93.74%	\$3,823,961.03	86.91%	\$3,802,992.88	87.45%	\$4,437,500.99	87.67%	\$4,473,266.24	89.42%	\$4,459,175.77	87.07%	\$4,473,266.24	88.89%
State		\$73,278.87	90.93%	\$609,889.66	88.85%	\$663,745.52	88.25%	\$516,629.50	88.35%	\$516,629.50	88.35%	\$674,811.00	98.17%	\$449,702.00	90.76%	\$506,613.00	91.02%
Federal		\$110,514.87	76.75%	\$48,453.34	48.33%	\$220,669.22	52.35%	\$342,379.48	71.65%	\$232,752.87	100.52%	\$4,686.89	124.59%	\$14,898.00	33.95%	\$4,886.00	114.53%
Other		\$16,038.92	1701.30%	\$5,771.41	828.05%	\$130.46	88.77%	\$0.00	207.04%	\$4,791.43	157.98%	\$0.00	0.00%	\$0.00	0.61%	\$0.00	2.22%
June Total		\$1,127,680.84	98.22%	\$1,133,300.30	95.75%	\$1,148,776.66	89.24%	\$1,493,688.04	94.14%	\$1,400,905.70	95.91%	\$594,899.27	97.00%	\$1,384,220.99	89.67%	\$0.00	91.21%
Local/County		\$490,950.58	97.02%	\$316,040.03	96.91%	\$300,080.50	89.47%	\$863,965.74	94.11%	\$577,183.40	91.96%	\$253,977.33	91.16%	\$659,670.31	91.44%	\$0.00	88.89%
State		\$612,293.90	101.47%	\$666,530.56	99.60%	\$700,820.68	98.38%	\$526,569.77	104.03%	\$795,801.97	104.12%	\$339,195.00	107.11%	\$508,033.00	102.09%	\$666,734.00	81.07%
Federal		\$23,735.41	78.66%	\$149,047.80	60.45%	\$146,450.68	58.97%	\$102,986.09	75.36%	\$27,920.33	102.08%	\$1,600.00	124.68%	\$216,517.68	45.66%	\$0.00	114.53%
Other		\$700.95	1708.31%	\$1,681.91	844.87%	\$1,423.00	103.02%	\$1,666.44	208.70%	\$0.00	157.98%	\$126.94	136.90%	\$0.00	0.61%	\$0.00	2.22%
July Total		\$175,787.22	98.30%	\$211,749.74	96.97%	\$389,401.73	91.10%	\$229,587.05	95.24%	\$179,037.44	96.79%	\$73,390.13	97.36%	\$732,262.67	93.09%	\$0.00	91.21%
Local/County		\$136,849.87	97.52%	\$177,114.79	97.69%	\$332,808.51	92.31%	\$103,610.47	94.91%	\$135,494.63	92.97%	\$17,969.13	91.29%	\$216,886.67	92.87%	\$0.00	88.89%
State		\$35,398.85	81.56%	\$6,837.50	99.71%	\$35,084.52	98.89%	\$35,084.52	98.89%	\$0.00	104.12%	\$0.00	107.11%	\$1			

EXPENDITURE REPORT	2012-13	2013-14	2014-15	2015-16	2016-17	2017-18	2018-19	2019-20	%
September Total	\$1,849,309.87	\$1,617,997.97	\$1,586,003.98	\$1,546,839.29	\$1,539,984.51	\$1,543,208.42	\$1,682,014.98	\$1,776,080.23	7.85%
Payroll and Benefits	\$1,227,892.31	\$1,283,591.68	\$1,293,637.93	\$1,254,278.80	\$1,406,961.65	\$1,463,973.67	\$1,477,573.31	\$1,552,280.21	8.23%
Accounts Payable	\$621,417.56	\$334,406.29	\$292,366.05	\$292,560.49	\$133,022.86	\$79,234.75	\$204,441.67	\$223,800.02	5.87%
October Total	\$1,333,822.76	\$1,401,716.38	\$1,610,650.56	\$1,643,622.29	\$1,672,110.74	\$1,769,382.25	\$1,798,070.83	\$1,750,705.33	16.23%
Payroll and Benefits	\$1,143,367.18	\$1,181,349.20	\$1,258,367.43	\$1,308,199.96	\$1,373,032.01	\$1,411,494.27	\$1,418,571.45	\$1,485,990.30	16.75%
Accounts Payable	\$190,455.58	\$220,367.18	\$352,283.13	\$335,422.33	\$299,078.73	\$357,887.98	\$379,499.38	\$264,715.03	14.78%
November Total	\$1,445,993.76	\$1,536,909.02	\$1,478,880.75	\$1,538,076.50	\$1,707,062.78	\$1,691,421.13	\$1,880,881.44	\$1,964,465.29	25.61%
Payroll and Benefits	\$1,150,477.61	\$1,198,104.30	\$1,271,292.91	\$1,306,456.33	\$1,357,595.11	\$1,408,770.79	\$1,450,737.77	\$1,513,333.46	25.10%
Accounts Payable	\$295,516.15	\$338,804.72	\$207,587.84	\$231,620.17	\$349,467.67	\$282,650.34	\$430,143.67	\$451,131.83	28.43%
December Total	\$1,357,283.75	\$1,344,398.22	\$1,446,578.00	\$1,503,918.41	\$1,573,314.08	\$1,587,829.31	\$1,690,389.95	\$1,750,121.38	32.89%
Payroll and Benefits	\$1,143,765.66	\$1,185,882.01	\$1,244,464.16	\$1,293,460.90	\$1,352,358.36	\$1,411,764.26	\$1,453,747.63	\$1,493,938.48	32.31%
Accounts Payable	\$208,518.09	\$158,516.21	\$202,113.84	\$210,457.51	\$220,955.72	\$176,065.05	\$236,642.32	\$256,182.90	35.90%
January total	\$1,264,922.47	\$1,312,879.88	\$1,416,599.92	\$1,478,112.93	\$1,575,058.75	\$1,633,516.52	\$1,704,823.80	\$1,853,600.58	40.84%
Payroll and Benefits	\$1,140,249.98	\$1,177,040.30	\$1,257,022.65	\$1,298,596.35	\$1,388,499.67	\$1,438,173.00	\$1,477,790.55	\$1,535,612.56	41.81%
Accounts Payable	\$144,672.49	\$135,839.58	\$159,577.27	\$179,516.58	\$186,559.08	\$145,343.52	\$227,033.25	\$317,988.02	45.81%
February Total	\$1,311,064.49	\$1,403,873.80	\$1,461,575.64	\$1,526,340.07	\$1,596,272.75	\$1,649,623.03	\$1,725,930.50	\$1,704,430.45	48.89%
Payroll and Benefits	\$1,137,572.54	\$1,191,361.71	\$1,256,823.51	\$1,291,244.15	\$1,349,019.62	\$1,391,119.52	\$1,435,662.72	\$1,500,331.65	50.08%
Accounts Payable	\$173,491.95	\$212,512.09	\$204,752.13	\$235,095.92	\$247,253.13	\$258,503.51	\$290,267.78	\$204,098.80	51.99%
March total	\$1,325,835.62	\$1,349,916.60	\$1,463,652.98	\$1,604,907.73	\$1,628,284.06	\$1,643,416.11	\$1,701,819.92	\$1,753,060.01	58.55%
Payroll and Benefits	\$1,153,519.72	\$1,198,109.22	\$1,290,767.24	\$1,333,219.78	\$1,385,812.13	\$1,420,120.87	\$1,443,608.06	\$1,518,851.10	58.46%
Accounts Payable	\$172,315.90	\$151,807.38	\$172,885.74	\$271,687.95	\$242,471.93	\$223,295.24	\$258,211.86	\$234,208.91	59.07%
April Total	\$1,280,538.15	\$1,330,513.12	\$1,486,270.17	\$1,604,907.73	\$1,605,283.97	\$1,595,748.63	\$1,644,321.37	\$1,719,549.38	64.50%
Payroll and Benefits	\$1,130,521.26	\$1,181,684.00	\$1,261,959.40	\$1,295,557.89	\$1,349,987.19	\$1,391,441.45	\$1,416,457.92	\$1,465,501.95	66.54%
Accounts Payable	\$150,016.89	\$148,829.12	\$224,310.77	\$209,349.84	\$255,296.78	\$204,307.18	\$227,863.45	\$153,047.43	64.70%
May Total	\$1,350,912.94	\$1,454,410.75	\$1,433,181.09	\$1,590,118.89	\$1,772,744.18	\$1,920,226.07	\$1,907,569.73	\$1,780,342.83	74.88%
Payroll and Benefits	\$1,159,091.91	\$1,192,409.39	\$1,266,060.96	\$1,288,718.16	\$1,328,667.38	\$1,403,191.42	\$1,434,293.62	\$1,447,628.60	74.52%
Accounts Payable	\$191,821.03	\$262,001.36	\$167,120.13	\$301,400.73	\$444,076.80	\$317,034.65	\$473,276.11	\$332,714.23	76.83%
June Total	\$1,147,588.16	\$1,188,929.32	\$1,786,307.10	\$1,905,598.30	\$1,913,859.70	\$1,934,814.67	\$2,007,087.28	\$2,000,000.00	82.76%
Payroll and Benefits	\$352,758.16	\$289,625.12	\$504,962.68	\$595,566.22	\$650,692.81	\$679,950.05	\$679,871.60	\$679,871.60	80.47%
Accounts Payable	\$101,829.99	\$109,304.20	\$121,344.42	\$130,032.08	\$133,166.89	\$124,900.00	\$107,926.68	\$100,128.40	76.83%
July Total	\$1,340,066.51	\$1,318,878.29	\$1,917,135.16	\$1,522,654.33	\$1,670,132.49	\$1,664,126.84	\$1,810,156.40	\$2,000,000.00	91.21%
Payroll and Benefits	\$1,119,751.82	\$1,163,519.86	\$657,324.77	\$1,306,272.91	\$1,366,690.15	\$1,397,327.62	\$1,433,090.84	\$1,465,501.95	88.45%
Accounts Payable	\$220,334.69	\$155,058.43	\$657,810.39	\$216,381.42	\$303,442.34	\$266,799.22	\$377,065.56	\$534,498.05	99.92%
August Total	\$1,326,233.19	\$1,916,892.73	\$2,304,800.20	\$2,255,212.34	\$1,643,692.26	\$1,763,664.53	\$1,869,245.30	\$2,000,000.00	99.92%
Payroll and Benefits	\$1,188,034.58	\$1,215,792.69	\$1,253,854.19	\$1,327,324.79	\$1,335,378.74	\$1,398,339.51	\$1,423,449.07	\$1,438,519.00	96.38%
Accounts Payable	\$138,198.61	\$701,100.04	\$1,050,946.01	\$927,887.55	\$308,313.52	\$365,325.02	\$445,796.23	\$561,480.00	118.18%
Total Expended	\$16,686,299.67	\$17,466,641.20	\$19,550,459.06	\$19,508,677.30	\$19,987,800.27	\$20,396,977.88	\$21,422,311.50	\$16,052,355.48	99.92%
Total Budgeted	\$17,290,444.00	\$17,764,736.00	\$19,999,791.00	\$19,999,791.00	\$20,350,895.00	\$20,400,895.00	\$21,438,519.00	\$21,438,519.00	99.92%
Payroll and Benefits	\$14,135,441.00	\$14,677,899.00	\$16,599,826.53	\$16,599,826.53	\$17,263,819.59	\$17,263,819.59	\$17,954,372.37	\$18,133,916.10	99.92%
Accounts Payable	\$3,155,003.00	\$3,086,837.00	\$3,399,964.47	\$3,399,964.47	\$3,087,075.41	\$3,137,075.41	\$3,468,146.63	\$3,304,602.90	99.92%
Over/Under	(604,144.33)	(298,094.80)	(449,331.94)	(491,113.70)	(363,094.73)	(3,917.12)	(16,207.50)	(5,386,163.52)	0.08%

2019-20 School Year

	Budgeted/Beginning	September	October	November	December	January	February	March	April	May	June	July	August	Year to Date	Balance	% Spent/Rec
01 General Fund																
SPED Expenditures	1,009,565.00	150,305.53	215,577.67	247,286.45	254,808.16	236,458.60	225,897.28	238,814.30	234,449.46	229,625.12	203,222.57	0.00	0.00	2,033,222.57	(1,023,657.57)	201.40%
Non-SPED Expenditures	20,428,954.00	1,617,928.90	1,536,147.66	1,724,004.64	1,494,875.78	1,617,141.98	1,478,970.61	1,514,245.71	1,485,099.92	1,550,717.71	1,409,821.09	0.00	0.00	14,019,132.91	6,409,821.09	68.62%
Total Expenditures	21,438,519.00	1,768,234.43	1,751,725.33	1,971,291.09	1,749,683.94	1,853,600.58	1,704,867.89	1,753,060.01	1,719,549.38	1,780,342.83	1,605,235.48	0.00	0.00	16,052,335.48	5,386,163.52	74.88%
Total Receipts	21,438,519.00	4,094,118.24	3,377,824.61	771,161.99	896,769.14	1,990,036.12	1,099,000.32	1,576,841.46	2,828,317.75	4,918,720.22	0.00	0.00	0.00	19,553,241.76	1,885,277.24	91.21%
Monthly Inter-Fund Loan	0.00	0.00	0.00	0.00	0.00	0.00	0.00	0.00	0.00	0.00	0.00	0.00	0.00	0.00	0.00	0.00%
Cash Balance	2,085,939.58	4,411,823.39	4,037,922.67	2,838,245.48	1,985,330.68	2,121,766.22	1,515,898.65	1,339,680.10	2,448,448.47	5,586,825.86	5,586,825.86	5,586,825.86	5,586,825.86	5,586,825.86	0.00	0.00%
02 Depreciation Fund																
Expenditures	850,000.00	5,400.00	0.00	0.00	5,400.00	0.00	0.00	5,400.00	0.00	13,029.84	29,229.84	0.00	0.00	29,229.84	820,770.16	3.44%
Receipts	200,000.00	126.24	112.86	252.16	106.33	101.20	244.41	61.47	49.52	156.04	0.00	0.00	0.00	1,210.23	198,789.77	0.61%
Loan to General Fund	0.00	0.00	0.00	0.00	0.00	0.00	0.00	0.00	0.00	0.00	0.00	0.00	0.00	0.00	0.00	0.00%
Loan Repayment from GF	0.00	0.00	0.00	0.00	0.00	0.00	0.00	0.00	0.00	0.00	0.00	0.00	0.00	0.00	0.00	0.00%
Cash Balance	320,233.02	314,959.26	315,072.12	315,324.28	310,030.61	310,131.81	310,376.22	305,037.69	305,087.21	292,213.41	292,213.41	292,213.41	292,213.41	292,213.41	0.00	0.00%
03 Employee Benefit																
Expenditures	145,560.00	4,083.69	10,654.27	7,872.26	4,782.14	5,507.41	9,162.66	7,168.63	6,135.38	13,164.12	68,530.56	77,029.44	0.00	77,029.44	47,08%	
Receipts	80,000.00	29,953.83	6,621.83	6,655.82	6,621.83	6,621.88	6,657.57	6,621.79	6,656.98	6,656.98	85,033.41	0.00	0.00	(3,033.41)	103.79%	
Cash Balance	51,909.77	77,779.91	73,747.47	72,531.03	74,370.72	75,485.19	72,980.10	72,433.35	72,919.76	66,412.62	66,412.62	66,412.62	66,412.62	66,412.62	0.00	0.00%
09 OCPUF																
Expenditures	4,340,000.00	0.00	0.00	0.00	119,710.00	0.00	0.00	0.00	0.00	0.00	0.00	0.00	0.00	119,710.00	4,220,290.00	2.76%
Receipts	750,000.00	130,576.31	22,031.92	119,887.82	4,549.50	53,237.41	10,762.90	38,258.53	48,732.09	156,945.34	584,981.82	0.00	0.00	584,981.82	165,018.18	78.00%
Cash Balance	3,763,989.26	3,894,565.87	3,916,597.49	4,036,485.31	3,921,324.81	3,974,562.22	3,985,325.12	4,023,583.65	4,072,315.74	4,229,261.08	4,229,261.08	4,229,261.08	4,229,261.08	4,229,261.08	0.00	0.00%
05 Activities																
Expenditures	600,000.00	48,476.35	31,005.16	27,056.66	70,545.95	25,960.11	60,873.55	12,020.14	19,076.61	33,467.55	328,492.08	271,507.92	0.00	271,507.92	51.75%	
Receipts	500,000.00	63,425.78	37,799.74	25,079.74	45,675.49	49,122.42	25,284.38	24,215.50	4,247.10	11,507.11	286,357.26	347,778.42	0.00	213,642.74	57.27%	
Cash Balance	389,913.24	404,862.67	411,657.25	409,680.33	384,809.87	407,972.18	372,383.01	394,568.37	369,738.86	347,778.42	347,778.42	347,778.42	347,778.42	347,778.42	0.00	0.00%
06 School Lunch																
Expenditures	1,225,000.00	154,946.05	119,990.71	105,844.03	106,027.06	90,356.16	114,380.51	113,093.32	100,971.50	77,957.17	983,566.51	241,433.49	0.00	241,433.49	80.29%	
Receipts	1,100,000.00	87,802.74	127,498.51	137,378.43	129,707.18	106,307.08	121,049.92	128,927.77	84,109.32	124,187.29	1,046,968.24	53,031.76	0.00	1,046,968.24	95.18%	
Cash Balance	217,277.49	150,134.18	157,641.98	189,176.38	212,856.50	228,807.42	235,476.83	251,311.28	234,449.10	280,679.22	280,679.22	280,679.22	280,679.22	280,679.22	0.00	0.00%
07 Bond																
Expenditures	1,675,000.00	0.00	0.00	0.00	725,356.36	0.00	0.00	0.00	0.00	0.00	949,643.64	43.30%	0.00	949,643.64	43.30%	
Receipts	500,000.00	127,233.92	19,147.83	5,166.20	2,080.73	98,515.40	15,320.63	72,448.09	94,522.02	311,100.22	745,535.04	0.00	0.00	(245,535.04)	149.11%	
Cash Balance	644,682.43	771,916.35	791,064.18	796,230.38	72,954.75	171,470.15	186,790.78	259,238.87	353,760.89	664,861.11	664,861.11	664,861.11	664,861.11	664,861.11	0.00	0.00%
08 Special Building																
Expenditures	13,500,000.00	194,392.75	376,843.16	773,546.62	1,485,416.99	1,002,218.48	903,441.32	1,478,346.59	957,760.92	1,305,616.67	5,022,416.50	62.80%	0.00	5,022,416.50	62.80%	
Receipts	150,000.00	139,291.18	29,201.87	15,347.22	9,776.01	9,767.10	31,643.52	4,230.04	2,657.66	2,036.72	242,151.32	161.43%	0.00	(92,151.32)	161.43%	
Loan Balance to Gen. Fund	0.00	0.00	0.00	0.00	0.00	0.00	0.00	0.00	0.00	0.00	0.00	0.00	0.00	0.00	0.00%	
Loan Repayment from GF	0.00	0.00	0.00	0.00	0.00	0.00	0.00	0.00	0.00	0.00	0.00	0.00	0.00	0.00	0.00%	
Cash Balance	13,526,044.28	13,470,942.71	13,125,301.42	12,363,302.02	10,887,661.04	9,895,209.66	9,023,411.86	7,509,295.31	6,594,192.05	5,290,612.10	5,290,612.10	5,290,612.10	5,290,612.10	5,290,612.10	0.00	0.00%
12 Student Fees																
Expenditures	70,000.00	0.00	1,184.62	1,188.00	284.81	149.00	1,402.75	862.87	556.00	149.00	64,222.95	8.25%	0.00	64,222.95	8.25%	
Receipts	36,000.00	6,629.75	1,331.90	2,803.00	688.00	290.00	762.00	2,807.00	0.00	40.00	15,351.65	42.64%	0.00	20,648.35	42.64%	
Cash Balance	75,160.25	81,790.00	81,937.28	83,552.28	83,955.47	84,096.47	83,455.72	85,399.85	84,843.85	84,734.85	84,734.85	84,734.85	84,734.85	84,734.85	0.00	0.00%
10 Cooperative Fund																
Expenditures	150,000.00	4,559.14	4,925.63	4,738.51	4,595.79	5,010.63	4,683.85	4,592.94	4,592.79	4,635.47	107,665.25	28.22%	0.00	107,665.25	28.22%	
Receipts	100,000.00	3,796.99	0.00	4,039.60	4,039.60	4,039.60	4,039.60	4,039.61	4,039.60	4,039.61	67,925.79	32.07%	0.00	67,925.79	32.07%	
Cash Balance	18,075.87	17,313.72	12,388.09	11,689.18	11,332.99	10,161.96	9,517.71	8,964.38	8,411.19	7,815.33	7,815.33	7,815.33	7,815.33	7,815.33	0.00	0.00%
Cash Balance																
Cash Balance	21,093,225.19	22,596,087.76	22,921,329.98	21,116,216.67	17,944,427.44	17,279,663.28	15,795,616.00	14,279,812.85	14,544,167.12	16,851,194.00	16,851,194.00	16,851,194.00	16,851,194.00	16,851,194.00	0.00	0.00%

SCHUYLER COMMUNITY SCHOOLS
Treasurer's Report
Fiscal Year 2020

SCHUYLER COMMUNITY SCHOOLS	May-20	YTD
GENERAL FUND		2019-2020
Beginning Cash Balance	2,448,448.47	2,085,939.58
Receipts:		
Colfax county Local District Tax	4,116,913.86	11,961,631.54
Butler county Local District Tax	289,216.93	1,163,707.04
Interest	1,090.43	15,143.26
License Fees		975.00
Rent of Facility		0.00
Curriculum Receipts		0.00
Other Local Receipts		0.00
Private grants		0.00
ESU Receipts		0.00
State Aid	376,953.00	3,392,577.00
Special Education	129,660.00	712,551.00
SPED Transportation		2,210.00
State Apportionment		276,733.02
Distant Ed Incentive		0.00
Six Pence		234,966.00
Other State Receipts		0.00
High Ability Learner		14,438.00
Title 1 Part A		618,306.00
Title I part B		14,649.00
Title I, SIG		271,732.00
Title II, Part A - Staff		102,315.00
SPED IDEA Base		92,576.00
SPED Preschool	4,886.00	9,534.00
SPED IDEA, Part B Enroll		299,737.00
SPED Ed IDEA CEIS		0.00
SPED non public		0.00
Medicaid in the Public Schools - MIPS		31,768.75
NASB MEDICAID Reimbursements		11,704.05
Carl Perkins Fund		358.00
E-Rate Reimbursement		20,699.20
Migrant		112.70
Title III		63,325.00
Title III Immigrant		18,028.00
Peak ILCD/other grants		600.00
21st Century Grant		186,706.00
Title IV A SSAE Grant		35,912.00
EducationQuest Grant		0.00
Buffett Foundation		0.00
Scott Foundation Grant - Child Well Being		0.00
Insurance Adjustments		0.00
Sale of Property		0.00
Other Non Revenue		247.20
Transfers in		0.00
Total Receipts	4,918,720.22	19,553,241.76
Non-program Receipts		
Non-program Receipts		8,283.24
Lunch & Coop Fund Reimbursements	<u>28,871.95</u>	<u>265,588.06</u>
Subtotal	28,871.95	273,871.30
Transfers from CD		
Transfers IN/OUT Money Market Accounts		<u>0.00</u>
Total Receipts & Transfers	4,947,592.17	19,827,113.06

General Fund Cash	7,396,040.64	21,913,052.64
General Fund Disbursements	-1809214.78	-16,326,226.78
Transfers In/Out Money Market Accounts		0.00
Prior Period Adjustment (Voided Checks)		0.00
Total Disbursements	<u>-1,809,214.78</u>	<u>-16,326,226.78</u>
GENERAL FUND Cash Balance	<u>5,586,825.86</u>	<u>5,586,825.86</u>

SPECIAL BUILDING FUND

Beginning Cash Balance	6,594,192.05	13,526,044.28
Colfax County Tax Collection	33.54	139,262.38
Butler County Tax Collection	4.07	18,275.72
School Project Support Donations		0.00
Sale of Property		0.00
Interest	1,999.11	59,613.22
2019 HS Bonds sold		0.00
Sale of Property		25,000.00
Non-revenue receipts		<u>0.00</u>
Total before non-program receipts	2,036.72	242,151.32
Non-program Receipts/transfers		<u>0.00</u>
Total Monthly Receipts	2,036.72	242,151.32
Cashed CD's		<u>0.00</u>
Total Building Fund Cash	6,596,228.77	13,768,195.60
Disbursements & Transfers:		
Total Expenditures	(1305616.67)	-8477583.50
Non-program Expenditures		0.00
Total Disbursements	<u>(1,305,616.67)</u>	<u>-8477583.50</u>
Special Building Fund Ending Balance	<u>5,290,612.10</u>	<u>5,290,612.10</u>

BOND FUND ACCOUNT

Beginning Balance Pinnacle Bank	353,760.78	644,682.32
New Bond K-3 2007 tax collections	311,082.08	745,257.92
Interest	18.14	277.12
		<u>0.00</u>
Total	311,100.22	745,535.04
Bond Payment		<u>-725,356.36</u>
Expenditures	0.00	<u>0.00</u>
Balance 2007 bonds	664,861.00	664,861.00
Beginning Balance - County Treasurer		0.00
Old Bond - WW 1993 - Held by Colfax Co Treasurer		0.00
Transfers		<u>0.00</u>
Total Old Bond Balance		0.00
Beatrice Bank Holding funds		0.00
Total Bond Fund Balance	<u>664,861.00</u>	<u>664,861.00</u>

DEPRECIATION FUND SAVINGS

Beginning Balance Checking accounts	218,239.60	233,687.75
Receipts		0.00
Interest on Money Market Accounts	46.59	<u>798.44</u>
Non-program receipts		
Total	218,286.19	234,486.19
Disbursements	-13,029.84	-29,229.84
Transfers		
Non-program disbursements		
Ending Balance Cash account/Money Market Ac	<u>205,256.35</u>	<u>205,256.35</u>
DEPRECIATION FUND INVESTMENTS:		
Beginning Balance (800011254, 800012522, 5830	86,847.61	86,545.27
CD's		0.00
Interest	109.45	411.79
Ending Balance Investments	86,957.06	86,957.06
Total Depreciation Funds	<u>292,213.41</u>	<u>292,213.41</u>

QUALIFIED CAPITAL PURPOSE BONDS

Beginning balance	<u>4,072,315.66</u>	<u>3,763,989.18</u>
PINNACLE BANK (initial deposit+interest)		
Colfax County Tax Collections	145,320.02	410,910.10
Butler County Tax Collections	10,242.18	40,778.44
Interest & Transfers	1,383.14	21,116.67
US Treasury Receipts		112,176.61
Total Monthly Receipts	156,945.34	584,981.82
Transfers		0.00
Payments/Transfer of interest	0.00	-119,710.00
Disbursements		
Fund Balance	<u>4,229,261.00</u>	<u>4,229,261.00</u>

EMPLOYEE BENEFITS FUND

Beginning Balance	59,363.23	38,423.01
Deposits	<u>6,621.88</u>	82,928.54
Total Revenue	65,985.11	121,351.55
Disbursements & Transfers:	<u>-13,164.12</u>	-68,530.56
Ending Balance	<u>52,820.99</u>	<u>52,820.99</u>
EMPLOYEE BENEFITS FUND INVESTMENTS:		
Beginning Balance (800010018; 55375)	13,556.53	13,486.76
SCS CD's Interest	<u>35.10</u>	104.87
Ending Balance	13,591.63	13,591.63
Total Employee Benefits Funds Investments	13,591.63	13,591.63
Total Employee Benefits Funds	<u>66,412.62</u>	<u>66,412.62</u>

SCS STUDENT FEES

Beginning Balance	84,843.85	75,160.25
Receipts	40.00	15,351.65
Total	84,883.85	<u>90,511.90</u>
Disbursements	-149.00	-5,777.05
Ending Balance	<u>84,734.85</u>	<u>84,734.85</u>

SCS ACTIVITY FUND

Beginning Balance	369,738.86	389,913.24
Receipts	11,507.11	286,357.26
Total	381,245.97	<u>676,270.50</u>
Disbursements	-33,467.55	-328,492.08
Ending Balance	<u>347,778.42</u>	<u>347,778.42</u>

Lunch Fund

Beginning Balance Checking accounts	234,449.10	217,277.49
Receipts	124,176.09	1,046,698.34
Interest	11.20	269.90
non-program receipts		<u>0.00</u>
Total Cash	358,636.39	<u>1,264,245.73</u>
Disbursements	-77,957.17	-983,566.51
non-program expenses		0.00
Total Expenditures	<u>-77,957.17</u>	<u>-983,566.51</u>
Total Lunch Funds	<u>280,679.22</u>	<u>280,679.22</u>

SCS COOPERATIVE FUND

Beginning Balance	8,411.19	18,075.87
Receipts	4,039.61	32,074.21
Total	12,450.80	<u>50,150.08</u>
Disbursements	-4,635.47	-42,334.75
Ending Balance	<u>7,815.33</u>	<u>7,815.33</u>

Submitted By:

Charles P. Misek, Treasurer

SCHUYLER COMMUNITY SCHOOLS

Revenue Summary Report

FY 2020

For the Month of MAY 2020

Account	BUDGET 2019-20	May-20	2019-20 YTD TOTALS	Percent Collected
Tax Collections	14,784,334.00	4,406,130.79	13,125,338.58	88.78%
Tuition Rec'd Other Districts	-		-	0.00%
Interest earned on Local Receipts	1,000.00	1,090.43	15,143.26	1514.33%
CD Interest	17,500.00		-	0.00%
License Fee	3,500.00		975.00	27.86%
Community Service Activities	3,000.00		-	0.00%
Grants from Corp & other private	-		-	
Other Local Receipts	19,118.00		-	0.00%
ESU Receipts	2,000.00		-	0.00%
State Aid	3,277,820.00	376,953.00	3,392,577.00	103.50%
Sp Ed Programs	558,000.00	129,660.00	712,551.00	127.70%
Sp Ed Transportation	4,000.00		2,210.00	55.25%
State Apportionment	200,482.00		276,733.02	138.03%
Other State/Distance Learning Education			-	
High Ability Learner	6,500.00		14,438.00	222.12%
Six Pence	135,000.00		234,966.00	174.05%
Other State	5,000.00		-	0.00%
Title I, Part A	200,000.00		618,306.00	0.00%
Title I, part B	400,000.00		14,649.00	0.00%
Title I - School Improvement Grant	886,985.00		271,732.00	0.00%
Title IIA	40,000.00		102,315.00	255.79%
Title IIA, ESU7 Consortium	-		-	0.00%
IDEA, to age 5	82,576.00		92,576.00	0.00%
Sp Ed - Base	250,000.00	4,886.00	9,534.00	3.81%
Sp Ed-Part B Funds Enrollment	47,595.00		299,737.00	629.77%
Sp Ed - CEIS	45,000.00		-	0.00%
Sp Ed - Non public			-	0.00%
Medicaid in Public schools	10,000.00		31,768.75	0.00%
NASB NEBMAC MEDICAID	40,000.00		11,704.05	29.26%
Carl Perkins	5,000.00		358.00	7.16%
E-Rate Reimbursement	57,000.00		20,699.20	36.31%
Migrant	-		112.70	
Title III	80,000.00		63,325.00	79.16%
Title III Immigrant	4,575.00		18,028.00	394.05%
Peak ILCD/other grants	425.00		600.00	141.18%
21st Century Grant	272,109.00		186,706.00	68.61%
Title IV-A SSAE	-		35,912.00	
Save the Children Buffett Foundation			-	
Education Quest	-		-	0.00%
Scott Grant - Child Well Being			-	
Debt Services			-	0.00%
Insurance Adjustments	-		-	0.00%
Sale of Property	-		-	0.00%
Other Non Revenue Receipts			247.20	0.00%
Total Program Receipts	21,438,519.00	4,918,720.22	19,553,241.76	91.21%
Non Program Receipts				
Non Program Receipts	-		8,283.24	
Lunch, Coop Payroll or Reimb	-	28,871.95	265,588.06	
	-			

Total Receipts	<u>21,438,519.00</u>	<u>4,947,592.17</u>	<u>19,827,113.06</u>	
Total Budgeted Beginning Cash	<u>2,085,939.58</u>			
Total Resources Available	<u>23,524,458.58</u>			
Audit adjustments				
OTHER FUND RECEIPTS				
Depreciation Fund Receipts	200,000.00	156.04	1,210.23	0.61%
Employee Benefits Fund Receipts	80,000.00	6,656.98	83,033.41	
Qualified Capital Purpose Fund	750,000.00	156,945.34	584,981.82	78.00%
Activities Fund Receipts	500,000.00	11,507.11	286,357.26	57.27%
Lunch Fund Receipts	1,100,000.00	124,187.29	1,046,968.24	95.18%
Bond Fund	500,000.00	311,100.22	745,535.04	149.11%
Special Bldg Fund	150,000.00	2,036.72	242,151.32	161.43%
Cooperative Fund	100,000.00	4,039.61	32,074.21	32.07%
Student Fee Receipts	<u>36,000.00</u>	<u>40.00</u>	<u>15,351.65</u>	42.64%
TOTAL OTHER FUND RECEIPTS	3,416,000.00	616,669.31	3,037,663.18	
Beginning Balances	19,007,285.61			
TOTAL SCS FUND RECEIPTS	<u>45,947,744.19</u>	<u>5,564,261.48</u>	<u>22,864,776.24</u>	
Transfer				
General Fund	-		-	
Depreciation Fund			-	
Employee Benefits			-	
Qualified Capital Purpose Fund			-	
Activity Fund			-	
Lunch Fund			-	
Bond Fund			-	
Special Building Fund			-	
Cooperative Fund			-	
Student Fees Fund			-	
TOTAL TRANSFERS		<u>-</u>	<u>-</u>	
TOTAL SCS RECEIPTS WITH TRANSFERS		<u>5,564,261.48</u>	<u>22,864,776.24</u>	

SCHUYLER COMMUNITY SCHOOLS
EXPENDITURE SUMMARY
FISCAL YEAR 2020
Monthly Expenditures

Account	2019-20	May-20	YTD	Percent
	Budget		2019-20	2019-20
Regular Instructional Programs	11,992,000.00	971,930.17	8,395,476.32	70.01%
Special Education Instructional Programs	1,048,005.00	160,271.82	1,431,743.88	136.62%
Summer School	42,000.00	-	10.02	0.02%
Support Services-Pupils	950,000.00	41,774.95	401,560.21	42.27%
OT/PT/Speech/Vision	50,000.00	54,652.04	464,727.48	929.45%
Support Services-Staff	652,415.00	189,080.16	944,244.73	144.73%
General Administration	500,000.00	28,642.16	325,324.57	78.43%
Office Of The Principal	1,050,000.00	92,352.93	823,483.85	105.20%
Support Services-Business	150,800.00	18,198.55	158,636.67	105.20%
Furniture and Equipment	36,400.00	-	10,425.60	28.64%
Personnel Services	10,000.00	-	10,000.00	100.00%
Support Services-Maintenance & Operation	1,928,256.00	129,296.36	1,329,702.01	68.96%
Support Services-Pupil Transportation	75,320.00	4,478.92	97,419.28	129.34%
Community Services	40,000.00	5,646.06	54,035.10	135.09%
State Categorical Programs	385,400.00	32,001.81	272,859.59	70.80%
Federal Programs	2,195,423.00	52,016.90	1,332,839.47	60.71%
Debt Service	232,500.00	-	-	0.00%
Transfers	100,000.00	-	-	0.00%
Total Program Expenditures	21,438,519.00	1,780,342.83	16,052,488.78	74.88%
Non Prog. Expenditures - Misc			8,283.24	
Non Prog. Expenditures - Lunch & Coop		28,871.95	265,588.06	
Total Expenditures	21,438,519.00	1,809,214.78	16,326,360.08	
Budgeted Cash Reserve	3,000,000.00			
Total Requirements	24,438,519.00	1,809,214.78	16,326,360.08	
OTHER FUND DISBURSEMENTS				
Depreciation Fund Disbursements	850,000.00	13,029.84	29,229.84	3.44%
Employee Benefits Fund Disbursements	145,560.00	13,164.12	68,530.56	47.08%
Qualified Capital Purpose Fund	4,340,000.00	-	119,710.00	2.76%
Activities Fund Disbursements	600,000.00	33,467.55	328,492.08	54.75%
Lunch Fund Disbursements	1,225,000.00	77,957.17	983,566.51	80.29%
Bond Fund	1,675,000.00	-	725,356.36	43.30%
Special Bldg Fund Disbursements	13,500,000.00	1,305,616.67	8,477,583.50	62.80%
Cooperative	150,000.00	4,635.47	42,334.75	28.22%
Student Fee Disbursements	70,000.00	149.00	5,777.05	8.25%
	22,555,560.00	1,448,019.82	10,780,580.65	47.80%
Other fund Cash Reserves				
TOTAL DISTRICT'S DISBURSEMENTS	46,994,079.00	3,257,234.60	27,106,940.73	
Transfer funds				
General Fund			-	
Depreciation Fund			-	
Employee Benefits			-	
Qualified Capital Purpose Fund			-	
Activity Fund			-	
Lunch Fund Transfers			-	
Bond Fund			-	
Special Building Fund			-	
Cooperative Fund			-	
Student Fees Fund			-	
Transfer funds			-	
TOTAL DISTRICT EXPENDITURES		3,257,234.60	27,106,940.73	

**SCHUYLER COMMUNITY SCHOOLS
LUNCH PROGRAM
BUDGET TO ACTUAL
FISCAL YEAR 2020**

	Budget	May	YTD Actual	% of Budget
Receipts:	2019-2020	2020	2019-2020	
Sale of Meals	174722.51	268.28	135506.84	77.56%
Interest	500.00	11.20	237.96	47.59%
State Reimbursement	7000.00	7411.51	7411.51	105.88%
Federal Reimbursement	825000.00	116496.30	892006.58	108.12%
Other Income	500.00		11805.35	2361.07%
Other Non-Revenue Income	0.00		0.00	
Transfer	0.00		0.00	
Non-program receipts	<u>0.00</u>		0.00	0.00%
Total Receipts	<u>1007722.51</u>	<u>124187.29</u>	1046968.24	<u>103.89%</u>
Beginning Cash	<u>217277.49</u>			
Transfer between accts				
Total Receipts & Beg. Cash	<u><u>1225000.00</u></u>			

Expenditures				
Regular Salaries	371000.00	26475.78	233267.21	62.88%
Substitute Salaries	15000.00		10968.50	73.12%
Employee Benefits	160500.00	15291.07	135353.29	84.33%
Contracted Services	1000.00		0.00	0.00%
Gas & Van Service	1500.00		1057.86	70.52%
Food	620000.00	33822.27	515954.46	83.22%
Software	5000.00		0.00	0.00%
Supplies & Materials	30000.00	1954.25	30470.80	101.57%
Equipment	10000.00	165.64	47663.55	476.64%
Equipment Repair	8000.00	259.34	6266.48	78.33%
Miscellaneous	3000.00	-11.18	2564.36	85.48%
Non-program Expenditures	<u>0.00</u>		<u>0.00</u>	
Total Expenditures	<u>1225000.00</u>	<u>77957.17</u>	983566.51	80.29%
Necessary Cash Reserves	0.00			
TOTAL REQUIREMENTS	<u>1225000.00</u>			
Transfers back between accts				
Revenue over Expenses		46,230.12	63,401.73	

STUDENT FEES POLICY

The Board of Education of Schuyler Community Schools adopts the following student fees policy in accordance with the Public Elementary and Secondary Student Fee Authorization Act.

The District's general policy is to provide for the free instruction in school in accordance with the Nebraska Constitution and state and federal law. This generally means that the District's policy is to provide free instruction for courses which are required by state law or regulation and to provide the staff, facility, equipment, and materials necessary for such instruction, without charge or fee to the students.

The District does provide activities, programs, and services to children, which extend beyond the minimum level of constitutionally required free instruction. Students and their parents have historically contributed to the District's efforts to provide such activities, programs, and services. The District's general policy is to continue to encourage and, to the extent permitted by law, to require such student and parent contributions to enhance the educational program provided by the District.

Under the Public Elementary and Secondary Student Fee Authorization Act, the District is required to set forth in a policy its guidelines or policies for specific categories of student fees. The District does so by setting forth the following guidelines and policies. This policy is subject to further interpretation or guidance by administrative or Board regulations, which may be adopted from time to time. The Policy includes Appendix "1," which provides further specifics of student fees and materials required of students. Parents, guardians, and students are encouraged to contact their building administration or their teachers or activity coaches and sponsors for further specifics.

(1) Guidelines for non-specialized attire required for specified courses and activities. Students have the responsibility to furnish and wear non-specialized attire meeting general District grooming and attire guidelines, as well as grooming and attire guidelines established for the building or programs attended by the students or in which the students participate. Students also have the responsibility to furnish and wear non-specialized attire reasonably related to the programs, courses and activities in which the students participate where the required attire is specified in writing by the administrator or teacher responsible for the program, course or activity.

The District will provide or make available to students such safety equipment and attire as may be required by law, specifically including appropriate industrial-quality eye protective devices for courses of instruction in vocational, technical, industrial arts, chemical or chemical-physical classes which involve exposure to hot molten metals or other molten materials, milling, sawing, turning, shaping, cutting, grinding, or stamping of any solid materials, heat treatment, tempering, or kiln firing of any metal or other materials, gas or electric arc welding or other forms of welding processes, repair or servicing of any vehicle, or caustic or explosive materials, or for laboratory classes involving caustic or explosive materials, hot liquids or solids, injurious radiations, or other similar hazards. Building administrators are directed to assure that such equipment is available in the appropriate classes and areas of the school buildings, teachers are

directed to instruct students in the usage of such devices and to assure that students use the devices as required, and students have the responsibility to follow such instructions and use the devices as instructed.

(2) Personal or consumable items & miscellaneous

a. (a) Extracurricular Activities. Students have the responsibility to furnish any personal or consumable items for participation in extracurricular activities.

(b) Courses

(i) General Course Materials. Items necessary for students to benefit from courses will be made available by the District for the use of students during the school day. Students may be encouraged, but not required, to bring items needed to benefit from courses including, but not limited to, pencils, paper, pens, erasers, notebooks, trappers, protractors and math calculators. A specific class supply list will be published annually in a Board-approved student handbook or supplement or other notice. The list may include refundable damage or loss deposits required for usage of certain District property.

(ii) Damaged or Lost Items. Students are responsible for the careful and appropriate use of school property. Students and their parents or guardian will be held responsible for damages to school property where such damage is caused or aided by the student and will also be held responsible for the reasonable replacement cost of school property which is placed in the care of and lost by the student.

(iii) Materials Required for Course Materials. Students are permitted to and may be encouraged to supply materials for course projects. Some course projects (such as projects in art and shop classes) may be kept by the student upon completion. In the event the completed project has more than minimal value, the student may be required, as a condition of the student keeping the completed project, to reimburse the District for the reasonable value of the materials used in the project. Standard project materials will be made available by the District. If a student wants to create a project other than the standard course project, or to use materials other than standard project materials, the student will be responsible for furnishing or paying the reasonable cost of any such materials for the project.

(iv) Music Course Materials. Students will be required to furnish musical instruments for participation in optional music courses. Use of a musical instrument without charge is available under the District's fee waiver policy. The District is not required to provide for the use of a particular type of musical instrument for any student.

(v) Parking. Students may be required to pay for parking on school grounds or at school-sponsored activities, and may be subject payment of fines or damages for damages caused with or to vehicles or for failure to comply with school parking rules.

(3) Extracurricular Activities–Specialized equipment or attire. Extracurricular activities means student activities or organizations which are supervised or administered by the District, which do not count toward graduation or advancement between grades, and in which participation is not otherwise required by the District. The District will generally furnish students with specialized equipment and attire for participation in extracurricular activities. The District is not required to provide for the use of any particular type of equipment or attire.

Equipment or attire fitted for the student and which the student generally wears exclusively, such as dance squad, cheerleading, and music/dance activity (e.g. choir or show choir) uniforms and outfits, along with T-shirts for teams or band members, will be required to be provided by the participating student. The cost of maintaining any equipment or attire, including uniforms, which the student purchases or uses exclusively, shall be the responsibility of the participating student. Equipment which is ordinarily exclusively used by an individual student participant throughout the year, such as golf clubs, softball gloves, and the like, are required to be provided by the student participant. Items for the personal medical use or enhancement of the student (braces, mouth pieces, and the like) are the responsibility of the student participant. Students have the responsibility to furnish personal or consumable equipment or attire for participation in extra curricular activities or for paying a reasonable usage cost for such equipment or attire. For musical extracurricular activities, students may be required to provide specialized equipment, such as musical instruments, or specialized attire, or for paying a reasonable usage cost for such equipment or attire.

(4) Extracurricular Activities–Fees for participation. Any fees for participation in extracurricular activities are further specified in Appendix “1.” Admission fees are charged for extracurricular activities and events.

(5) Postsecondary education costs. Students are responsible for postsecondary education costs. The phrase “postsecondary education costs” means tuition and other fees only associated with obtaining credit from a postsecondary educational institution. For a course in which students receive high school credit and for which the student may also receive postsecondary education credit, the course shall be offered without charge for tuition, transportation, books, or other fees, except tuition and other fees associated with obtaining credits from a postsecondary educational institution.

(6) Transportation costs. Students are responsible for fees established for transportation services provided by the District as and to the extent permitted by federal and state laws and regulations.

(7) Copies of student files or records. The Superintendent or the Superintendent's designee shall establish a schedule of fees representing a reasonable cost of reproduction for copies of a student's files or records for the parents or guardians of such student. A parent, guardian or student who requests copies of files or records shall be responsible for the cost of copies reproduced in accordance with such fee schedule. The imposition of a fee shall not be used to prevent parents of students from exercising their right to inspect and review the students' files or records and no fee shall be charged to search for or retrieve any student's files or records. The fee schedule shall permit one copy of the requested records be provided for or on behalf of the student without charge and shall allow duplicate copies to be provided without charge to the extent required by federal or state laws or regulations.

(8) Participation in before-and-after-school or prekindergarten services. Students are responsible for fees required for participation in before-and-after-school or prekindergarten services offered by the District, except to the extent such services are required to be provided without cost.

(9) Participation in summer school or night school. Students are responsible for fees required for participation in summer school or night school. Students are also responsible for correspondence courses.

(10) Breakfast and lunch programs. Students shall be responsible for items which students purchase from the District's breakfast and lunch programs. The cost of items to be sold to students shall be consistent with applicable federal and state laws and regulations. Students are also responsible for the cost of food, beverages, and personal or consumable items which the students purchase from the District or at school, whether from a "school store," a vending machine, a booster club or parent group sale, a book order club, or the like. Students may be required to bring money or food for field trip lunches and similar activities.

(11) Waiver Policy. The District's policy is to provide fee waivers in accordance with the Public Elementary and Secondary Student Fee Authorization Act. Students who qualify for free or reduced-price lunches under United States Department of Agriculture child nutrition programs shall be provided a fee waiver or be provided the necessary materials or equipment without charge for: (1) participation in extracurricular activities and (2) use of a musical instrument in optional music courses that are not extracurricular activities. Participation in a free-lunch program or reduced-price lunch program is not required to qualify for free or reduced-price lunches for purposes of this section. Students or their parents must request a fee waiver prior to participating in or attending the activity, and prior to purchase of the materials.

(12) Distribution of Policy. The Superintendent or the Superintendent's designee shall publish the District's student fee policy in the Student Handbook or the equivalent (for example, publication may be made in an addendum or a supplement to the student handbook). The Student Handbook or the equivalent shall be provided to every student of the District or to every household in which at least one student resides, at no cost.

(13) Student Fee Fund. The School Board hereby establishes a Student Fee Fund. The Student Fee Fund shall be a separate school district fund not funded by tax revenue, into which all money collected from students and subject to the Student Fee Fund shall be deposited and from which money shall be expended for the purposes for which it was collected from students. Funds subject to the Student Fee Fund consist of money collected from students for: (1) participation in extracurricular activities, (2) postsecondary education costs, and (3) summer school or night school.

CERTIFICATION

On the 16th day of June, 2014, the school board held a public hearing at a meeting of the school board on a proposed student fee policy. Such public hearing followed a review of the amount of money collected from students pursuant to, and the use of waivers provided in, the student fee policy for the 2013-14 school year. The foregoing student fee policy was adopted after such public hearing by a majority vote of the school board at an open public meeting in compliance with the public meetings laws.

Superintendent or Other Authorized School Official

Legal References:

Neb. Rev. Stat. §§79-2,125 to 79-2,135 and Laws 2003, LB 249 (The Public Elementary and Secondary Student Fee Authorization Act)

Neb. Constitution, Article VII, section 1.

Neb. Rev. Stat. §§79-241, 79-605, and 79-611(transportation)

Neb. Rev. Stat. §79-2,104 (student files or records)

Neb. Rev. Stat. §79-715 (eye-protective devices)

Neb. Rev. Stat. §79-737 (liability of students for damages to school books)

Neb. Rev. Stat. §79-1104 (before-and-after-school or prekindergarten services)

Neb. Rev. Stat. §§79-1106 to 79-1108.03 (accelerated or differentiated curriculum program)

Approved _____ Reviewed 6/16/2024 Revised _____

**Appendix“1” to 2013-14 Student Fees Policy of Schuyler Community Schools—
Additional Specification of Required Materials and Fees**

Preschool Program	Activity	Total Collected
NONE		
Fees Waived:	Activity	Total Waived
NONE		
Elementary Program	Activity	Total Collected
Kindergarten and 1 st grade	Supplies/Party Fees (\$20)	\$5,120.00
2 nd through 5 th grade	Party Fees (\$5)	\$2,655.00
Kind. through 5 th grade	Field Trips (\$3)	\$2,361.00
Fees Waived:	Activity	Fees Waived:
Kindergarten and 1 st grade	Supplies/Party Fees (\$20)	Estimated: 3@ \$60.00
2 nd through 5 th grade	Party Fees (\$5)	Estimated: 5@ \$25.00
Kind. through 5 th grade	Field Trips (\$3)	Estimated: 5@ \$15.00
Middle School Program	Activity	Total Collected
7 th and 8 th Grades	ITE Class Lab Fees	\$2,000.00
7 th and 8 th Grades	FCS Class Lab Fees	\$2,500.00
8 th Grade	iPad Optional Insurance Fees	\$1,054.24
Fees Waived:	Activity	Total Waived
NONE		
High School Program	Activity	Total Collected
9-12 Grades	Ag. Ed. Class Lab Fees	\$263.00
9-12 Grades	iPad Optional Insurance Fees	\$4,217.30
9-12 Grades	ITE Class Lab Fees	\$1,128.85
9-12 Grades	FCS Class Lab Fees	\$334.44
9-12 Grades	Music Class Fees	\$1,440.00
9-12 Grades	Guidance Fees	\$252.00
Fees Waived:	Activity	Total Waived
NONE		
Extra-Curricular Programs	Activity	Total Collected
General Activity	SES Activity Pass	\$330.00
General Activity	SMS Activity Pass	\$240.00
General Activity	SCHS Activity Pass	\$630.00
Fees Waived:	Activity	Total Waived
NONE		\$0.00

**Appendix“1” to 2018-19 Student Fees Policy of Schuyler Community Schools—
Additional Specification of Required Materials and Fees**

Program 2018-19 School Year	General Description of Fee or Material	\$ Amount of Fee Collected
Rural Schools	Activity	Total Collected
Fisher’s	Field Trip (\$3)	\$210.00
Richland	Field Trip (\$5)	\$145.00
Fees Waived:	Activity	Fees Waived:
NONE	None	\$0.00
Elementary School	Activity	Total Collected
K-5	Activity Fees (\$10)	\$7,188.50
Kindergarten	Field Trip (\$5)	\$575.00
1 st Grade	Field Trip (\$5.50)	\$704.00
2 nd Grade	Field Trip (\$10)	\$1,130.00
4 th Grade	Field Trip (\$5/\$7 parents)	\$828.00
5 th Grade	Field Trip (\$8/\$5parents)	\$1,001.00
K-5	Colfax Co. Movie Trips	\$3,341.00
5 th Grade	Play in Columbus (\$1.50)	\$181.75
1 st Grade	Play in Columbus (\$1.50)	\$212.25
4 th Grade	Recorder Choir (\$5)	\$300.00
5 th Grade	Band (Fees for Reeds, books)	\$263.00
Fees Waived:	Activity	Fees Waived:
Party and Field Trip Fees	NONE	\$0
Middle School	Activity	Total Collected
6 th , 7 th & 8 th Grades	ITE Lab Fees	\$2,975.00
6 th , 7 th & 8 th Grades	FCS Lab Fees	\$2,380.00
6 th , 7 th & 8 th Grades	Band Fees	\$163.65
Fees Waived:	Activity	Fees Waived:
6 th , 7 th & 8 th Grades	ITE Lab Fees	\$90.00
6 th , 7 th & 8 th Grades	FCS Lab Fees	\$60.00
High School	Activity	Total Collected
9-12 Grades	Ag. Ed. Lab Fees	\$0.00
9-12 Grades	Science/Math Club Fees	\$210.00
9-12 Grades	Library Replacement Fee	\$928.87
9-12 Grades	FCS Lab Fees	\$25.00
9-12 Grades	Music Fees	\$111.00
9-12 Grades	Guidance (PSAT) Fees	\$0.00
9-12 Grades	iPad Tech Fees	\$5,750.00
9-12 Grades	National Honor Society Fees	\$165.00
Fees Waived:	Activity	Fees Waived:
9-12 Grades	Band Shoes	\$0.00
Extra-Curricular Programs	Activity	Total Collected
General Activity	SES Activity Pass	\$0.00
General Activity	SMS Activity Pass	\$3,770.00
General Activity	SCHS Activity Pass	\$1,260.00
Fees Waived:	Activity	Fees Waived:
9-12	Activity Pass	\$4,290.00
6-8	Activity Pass	\$100.00

**Appendix“1” to 2019-20 Student Fees Policy of Schuyler Community Schools—
Additional Specification of Required Materials and Fees**

Program 2019-20 School Year	General Description of Fee or Material	\$ Amount of Fee Collected
Rural Schools	Activity	Total Collected
Fisher’s	Movie – Schuyler Theater	\$305
Richland	Movie – Schuyler Theater	\$360
Richland	Field Trip (\$5)	\$180
Fees Waived:	Activity	Fees Waived
NONE	None	\$0
Elementary School	Activity	Total Collected
K-5	Activity Fees (\$10)	\$6,304
Kindergarten	Field Trip	\$0
1 st Grade	Field Trip	\$0
2 nd Grade	Field Trip	\$0
4 th Grade	Field Trip (\$6/\$8.50 parents)	\$791.75
5 th Grade	Field Trip (\$7)	\$1,036
K-5	Colfax Co. Movie Trips	\$2,580
5 th Grade	Play in Columbus (\$1.50)	\$0.00
1 st Grade	Play in Columbus (\$1.50)	\$169
4 th Grade	Recorder Choir (\$5)	\$280
5 th Grade	Band (Fees for Reeds, books)	\$110
Fees Waived:	Activity	Fees Waived
Party and Field Trip Fees	NONE	\$50
Middle School	Activity	Total Collected
6 th , 7 th & 8 th Grades	ITE Lab Fees	\$2,560
6 th , 7 th & 8 th Grades	FCS Lab Fees	\$960
6 th , 7 th & 8 th Grades	Band Fees	\$0
Fees Waived:	Activity	Fees Waived:
6 th , 7 th & 8 th Grades	ITE Lab Fees	\$60
6 th , 7 th & 8 th Grades	FCS Lab Fees	\$30
High School	Activity	Total Collected
9-12 Grades	Ag. Ed. Lab Fees	\$0
9-12 Grades	Science/Math Club Fees	\$171
9-12 Grades	Library Replacement Fee	\$107
9-12 Grades	Music Fees	\$210
9-12 Grades	Guidance (PSAT) Fees	\$136
9-12 Grades	iPad Tech Fees	\$7,250
Fees Waived:	Activity	Fees Waived
9-12 Grades	Band Shoes	\$0
Extra-Curricular Programs	Activity	Total Collected
General Activity	Richland Activity Pass	\$120
General Activity	Fisher’s Activity Pass	\$120
General Activity	SMS Activity Pass	\$3,690
General Activity	SCHS Activity Pass	\$5,300
Fees Waived:	Activity	Fees Waived
9-12	Activity Pass	\$550
6-8	Activity Pass	\$50

HARASSMENT AND BULLYING POLICY

One of the missions of Schuyler Community Schools is to provide safe and secure environments for all students and staff. Positive behaviors (non-violence, cooperation, teamwork, understanding, and acceptance of others) are encouraged in the educational program and required of all students and staff. Inappropriate behaviors (bullying, intimidation and harassment) are to be identified and corrected. Students and staff are to avoid such behaviors. Strategies and practices are implemented to reinforce positive behaviors and to discourage and protect others from inappropriate behaviors.

“Bullying” is behavior where one person or group engages in harmful action towards another person or group acting on a real or perceived imbalance of power or view of superiority. The behavior typically includes verbal (e.g. teasing or name-calling) and physical aggression (e.g., hitting, pushing), threatening, excluding or ignoring, spreading rumors, or taking, defacing or destroying the others’ property. “Harassment” includes the same actions, though not necessarily from a standpoint of perceived power. Harassment is prohibited. Bullying and harassment is a violation of student conduct rules and appropriate disciplinary measures, up to expulsion, will be enforced. When bullying or harassment is done on the basis of gender, disability, race, or other protected status, it is considered a very serious offense for which expulsion may be a likely consequence depending on the severity of the conduct.

Students who are the victim of bullying or harassment or who observe such occurring are to promptly report the problem to their teacher or to the Principal so the problem can be addressed. Students who make reports of bullying activity will not be retaliated against for making the report.

RETURN TO SCHOOL COMMITTEE

The district will appoint a Return to School Committee and name a chairperson accountable for the committee's completion of activities required by the Nebraska Department of Education.

The Return to School Committee should include staff with appropriate oversight to monitor and guide individual tasks assigned to the Committee. This will include having a representative from each school site in the district. The Committee will involve external partners as needed to support its work and develop strategies for securing assistance, and procuring resources to carry out its tasks.

The Committee will determine and describe a vision in line with local values and community needs within the scope of the Committee's work and communicate this vision with all district stakeholders. The Committee will define and assign the roles and responsibilities of its work. This may include creating subcommittees as needed to carry out portions of the Committee's work.

The Committee and its subcommittees shall carry out a schedule of regular meetings..

Approved _____ Reviewed _____ Revised _____

BOARD POLICY AND TEMPORARY WAIVERS OF NDE RULES

The Board understands that due to local, state or national emergency situations, the Nebraska Department of Education may occasionally issue temporary waivers of NDE Rules and Regulations. In the case of contradictions between waivers and existing board policy, all temporary waivers of NDE Rules and Regulations shall also apply to and have priority over respective district policies for the duration of their active status.

Approved _____ Reviewed _____ Revised _____

NONRESIDENT STUDENTS/OPTION ENROLLMENT

Students who are eligible to attend a Nebraska public school but who are not legal residents of the school district may be admitted into the school district in accordance with the option enrollment program authorized by state statutes. Option enrollment students shall be accepted without charge. If the student has previously had an option enrollment accepted in any district, the application shall be rejected unless a statutory exception to this rule applies for that student.

Application for option enrollment should be made between September 1 and March 15 for enrollment during the following and subsequent school years. Upon agreement of the school boards of the resident district and the option (receiving) district, deadlines for application and approval of the option may be waived. Following the March 15 deadline, applications requesting admittance must contain a release approval from the resident district prior to the option district's consideration for acceptance.

The application for option enrollment does not require a release from the resident district and the receiving district has forty-five days to issue acceptance or rejection if:

1. after February 1 the student relocated to a different resident district, or
2. the student's option district merged with another district effective after February 1, and
3. the student's attendance would occur during the next immediate and subsequent school years.

For applications submitted by the March 15 deadline, written notification of approval or rejection of the application will be made before April 1 to the student's parent/guardian and the resident district. If the district rejects an application for a student to option in or out, the district will provide notification by certified mail to the parent/guardian of the reasons for rejection and the process for appealing the decision to the State Board of Education.

The board shall adopt standards and conditions for acceptance or rejection of a request for release of a resident student submitting an option application after March 15. Such standards shall not include the failure to meet the March 15 deadline. For those applications, the option district shall notify the parent/guardian and the resident district whether the application is accepted or rejected within sixty days after submission. False or substantively misleading information submitted by a parent/guardian on an application to an option district may be cause for the option district to reject a previously accepted application prior to the student's attendance.

The board shall adopt a resolution setting forth its specific standards for acceptance and rejection of applications as an option school. Standards will conform to those set forth by

Approved _____ Reviewed _____ Revised _____

WEAPONS

The board believes weapons and other dangerous objects and look-a-likes in school district facilities cause material and substantial disruption to the school environment or present a threat to the health and safety of students, employees and visitors on the school district premises or property within the jurisdiction of the school district.

Weapons and other dangerous objects and look-a-likes shall be taken from students and others who bring them onto the school district property or onto property within the jurisdiction of the school district or from students who are within the control of the school district.

The term "dangerous object" shall include noxious or flammable material, fireworks, devices intended to administer an electric shock (tasers, electric batons, prods, or stun guns) chemical weapons (i.e. mace, pepper spray), martial arts weapons or other instruments including those which eject a projectile or substance of any kind, or any replica or facsimile of any of the above, whether functional or nonfunctional, whether designed for use as a weapon or for some other use.

Parents of students found to possess weapons or dangerous objects or look-a-likes on school property shall be notified of the incident. Confiscation of weapons or dangerous objects shall be reported to the law enforcement officials, and students will be subject to disciplinary action including suspension or expulsion.

Students bringing firearms as defined in 18 U.S.C. 921 to school or knowingly possessing firearms at school may be expelled for a period of not less than one year. Students bringing to school or possessing dangerous weapons, including firearms, will be referred to law enforcement authorities. The superintendent shall have the authority to recommend this expulsion requirement be modified for students on a case-by-case basis. For purposes of this portion of this policy, the term "firearm" includes, but is not limited to, any weapon which is designed to expel a projectile by the action of an explosive, the frame or receiver of any such weapon, a muffler or silencer for such a weapon, or any explosive, incendiary or poison gas.

Weapons or dangerous objects under the control of law enforcement officials shall be exempt from this policy. Firearms kept in a locked firearm rack that is on a motor vehicle or that are contained within a private vehicle operated by a nonstudent adult that are not loaded are also exempt. Firearms also may be possessed by a person for the purpose of using them, with the approval of the school, in a historical reenactment, in a hunter education program, or as part of an honor guard. The principal may allow authorized persons to display weapons or other dangerous objects or look-a-likes for educational purposes and must be kept in a designated location during the school day. Such a display shall also be exempt from this policy. It shall be the responsibility of the superintendent, in conjunction with the principal, to implement this policy.

Approved _____ Reviewed _____ Revised _____

Legal Reference: Neb. Statute 79-263
Neb. Statute 28-1204.04
Improving America's Schools Act of 1994, P.L. 103-382.
18 U.S.C. § 921 (1994).
McClain v. Lafayette County Bd. of Education, 673 F.2d
106 (5th Cir. 1982).

Cross Reference: 505 Student Discipline
508 Student Health and Well-Being

WEAPONS

The board believes weapons and other dangerous objects and look-a-likes in school district facilities cause material and substantial disruption to the school environment or present a threat to the health and safety of students, employees and visitors on the school district premises or property within the jurisdiction of the school district.

Weapons and other dangerous objects and look-a-likes shall be taken from students and others who bring them onto the school district property or onto property within the jurisdiction of the school district or from students who are within the control of the school district.

The term “dangerous object” shall include noxious or flammable material, fireworks, devices intended to administer an electric shock (tasers, electric batons, prods, or stun guns) chemical weapons (i.e. mace, pepper spray), martial arts weapons or other instruments including those which eject a projectile or substance of any kind, or any replica or facsimile of any of the above, whether functional or nonfunctional, whether designed for use as a weapon or for some other use.

Parents of students found to possess weapons or dangerous objects or look-a-likes on school property shall be notified of the incident. Confiscation of weapons or dangerous objects shall be reported to the law enforcement officials, and students will be subject to disciplinary action including suspension or expulsion.

Students bringing firearms as defined in 18 U.S.C. 921 to school or knowingly possessing firearms at school may be expelled for a period of not less than one year. Students bringing to school or possessing dangerous weapons, including firearms, will be referred to law enforcement authorities. The superintendent shall have the authority to recommend this expulsion requirement be modified for students on a case-by-case basis. For purposes of this portion of this policy, the term "firearm" includes, but is not limited to, any weapon which is designed to expel a projectile by the action of an explosive, the frame or receiver of any such weapon, a muffler or silencer for such a weapon, or any explosive, incendiary or poison gas.

Weapons or dangerous objects under the control of law enforcement officials shall be exempt from this policy. Firearms kept in a locked firearm rack that is on a motor vehicle or that are contained within a private vehicle operated by a nonstudent adult that are not loaded are also exempt. Firearms also may be possessed by a person for the purpose of using them, with the approval of the school, in a historical reenactment, in a hunter education program, or as part of an honor guard. The principal may allow authorized persons to display weapons or other dangerous objects or look-a-likes for educational purposes and must be kept in a designated location during the school day. Such a display shall also be exempt from this policy. It shall be the responsibility of the superintendent, in conjunction with the principal, to implement ~~develop administrative regulations regarding~~ this policy.

Approved

Reviewed

Revised

Legal Reference: Neb. Statute 79-263
Neb. Statute 28-1204.04
Improving America's Schools Act of 1994, P.L. 103-382.
18 U.S.C. § 921 (1994).
McClain v. Lafayette County Bd. of Education, 673 F.2d
106 (5th Cir. 1982).

Cross Reference: 505 Student Discipline
508 Student Health and Well-Being

~~Approved~~ _____ ~~Reviewed~~ _____ ~~Revised~~ _____

SEARCHES, SEIZURES AND ARRESTS

School district property is held in public trust by the board. School district authorities may, without a search warrant, search students or protected student areas based on a reasonable and definable suspicion that a school district policy, rule, regulation or law has been violated.

The search shall be in a manner reasonable in scope to maintain order and discipline in the schools, promote the educational environment, and protect the safety and welfare of students, employees and visitors to the school district facilities. The furnishing of a locker, desk or other facility or space owned by the school and provided as a courtesy to a student, even if the student provides the lock for it, shall not create a protected student area and shall not give rise to an expectation of privacy with respect to the locker, desk, or other facility.

School authorities may seize any illegal, unauthorized or contraband materials discovered in the search. Items of contraband may include, but are not limited to, nonprescription controlled substances, marijuana, cocaine, amphetamines, barbiturates, apparatus used for controlled substances, alcoholic beverages, tobacco, weapons, explosives, poisons, stolen property and dangerous objects as defined in Policy 504.11. Such items are not to be possessed by a student without specific permission of the building principal while they are on school district property or on property within the jurisdiction of the school district; while on school owned and/or operated transportation; while attending or engaged in school activities; and while away from school grounds if misconduct will directly affect the good order, efficient management and welfare of the school district.

Possession of such items will be grounds for disciplinary action including suspension or expulsion and may be reported to local law enforcement officials. The board believes that illegal, unauthorized or contraband materials may cause material and substantial disruption to the school environment or presents a threat to the health and safety of students, employees, or visitors on the school district premises or property within the jurisdiction of the school district.

The superintendent or building principal shall only release minor students into the custody of a law enforcement officer upon presentation of a court order or warrant for the student's arrest, or under conditions for temporary custody of a juvenile without a warrant as provided by state statutes.

The principal or designee will attempt to notify the parent/guardian or responsible relative prior to the student's release and the place to which the student is reportedly to be taken, except in cases of child abuse.

It shall be the responsibility of the superintendent, in conjunction with the administrative team, to implement this policy.

Approved _____ Reviewed _____ Revised _____

Legal Reference: Neb. Statute 43-248 and 79-294
 New Jersey v. T.L.O., 469 U.S. 325 (1985).
 Cason v. Cook, 810 F.2d 188 (8th Cir. 1987), cert. den.,
 482 U.S. 930 (1987).

Cross Reference: 504 Student Rights and Responsibilities
 505 Student Discipline
 508.10 Referral of Students to Other Agencies

SEARCHES, SEIZURES AND ARRESTS

School district property is held in public trust by the board. School district authorities may, without a search warrant, search students or protected student areas based on a reasonable and definable suspicion that a school district policy, rule, regulation or law has been violated.

The search shall be in a manner reasonable in scope to maintain order and discipline in the schools, promote the educational environment, and protect the safety and welfare of students, employees and visitors to the school district facilities. The furnishing of a locker, desk or other facility or space owned by the school and provided as a courtesy to a student, even if the student provides the lock for it, shall not create a protected student area and shall not give rise to an expectation of privacy with respect to the locker, desk, or other facility.

School authorities may seize any illegal, unauthorized or contraband materials discovered in the search. Items of contraband may include, but are not limited to, nonprescription controlled substances, marijuana, cocaine, amphetamines, barbiturates, apparatus used for controlled substances, alcoholic beverages, tobacco, weapons, explosives, poisons, ~~and~~ stolen property and dangerous objects as defined in Policy 504.11. Such items are not to be possessed by a student without specific permission of the building principal while they are on school district property or on property within the jurisdiction of the school district; while on school owned and/or operated transportation; while attending or engaged in school activities; and while away from school grounds if misconduct will directly affect the good order, efficient management and welfare of the school district.

Possession of such items will be grounds for disciplinary action including suspension or expulsion and may be reported to local law enforcement officials. The board believes that illegal, unauthorized or contraband materials may cause material and substantial disruption to the school environment or presents a threat to the health and safety of students, employees, or visitors on the school district premises or property within the jurisdiction of the school district.

The superintendent or building principal shall only release minor students into the custody of a law enforcement officer upon presentation of a court order or warrant for the student's arrest, or under conditions for temporary custody of a juvenile without a warrant as provided by state statutes.

The principal or designee will attempt to notify the parent/guardian or responsible relative prior to the student's release and the place to which the student is reportedly to be taken, except in cases of child abuse.

It shall be the responsibility of the superintendent, in conjunction with the administrative team, to implement this policy.

Approved _____ Reviewed _____ Revised _____

Legal Reference: Neb. Statute 43-248 and 79-294
New Jersey v. T.L.O., 469 U.S. 325 (1985).
Cason v. Cook, 810 F.2d 188 (8th Cir. 1987), cert. den.,
482 U.S. 930 (1987).

Cross Reference: 504 Student Rights and Responsibilities
505 Student Discipline
508.10 Referral of Students to Other Agencies

CONCUSSION AWARENESS

Training to recognize the symptoms of concussions and brain injuries and their proper medical treatment shall be made available to coaches of the district's athletic teams.

The district will provide information on concussions and brain injuries to athletes and their parents or guardians prior to the beginning of practice or competition including at least:

1. The signs and symptoms of concussions;
2. The risks posed by sustaining a concussion; and
3. The actions a student should take in response to sustaining a concussion including the notification of coaches.

A student participating on a school athletic team shall be removed from a practice or game when reasonably suspected of having sustained a concussion or brain injury in that activity after observation by a coach or a licensed health care professional who is professionally affiliated with or contracted by the school. Any parent or guardian who suspects a student has sustained a concussion is expected to immediately notify district coaches or administrators of the injury. Students who suspect they have sustained a concussion shall immediately make such notification.

The injured student shall not be permitted to participate in any school supervised team athletic activities involving physical exertion, including, but not limited to, practices or games, until the student;

1. has been evaluated by a licensed health care professional;
2. has received written and signed clearance to resume participation in athletic activities from the licensed health care professional;
3. has submitted the written and signed clearance to resume participation in athletic activities to the school accompanied by written permission to resume participation from the student's parent or guardian.

If a student is reasonably suspected after observation of having sustained a concussion or brain injury and is removed from an athletic activity as required above, the parent or guardian of the student shall be notified by the school of the date and approximate time of the injury suffered by the student, the signs and symptoms of a concussion or brain injury that were observed, and any actions taken to treat the student.

The district shall establish a return to learn protocol for students that have sustained a concussion. The return to learn protocol shall recognize that students who have sustained a concussion and returned to school may need informal or formal accommodations, modifications of curriculum, and monitoring by medical or academic staff until the student is fully recovered. It is the responsibility of the superintendent to implement this policy.

Legal Reference: Neb. Statute 71-9104

Approved _____ Reviewed _____ Revised _____

CONCUSSION AWARENESS

Training to recognize the symptoms of concussions and brain injuries and ~~how to seek~~ their proper medical treatment shall be made available to coaches of the district's athletic teams.

The district will provide information on concussions and brain injuries to athletes and their parents or guardians prior to the beginning of practice or competition including at least:

1. The signs and symptoms of concussions;
2. The risks posed by sustaining a concussion; and
3. The actions a student should take in response to sustaining a concussion including the notification of coaches.

A student participating on a school athletic team shall be removed from a practice or game when reasonably suspected of having sustained a concussion or brain injury in that activity after observation by a coach or a licensed health care professional who is professionally affiliated with or contracted by the school. Any parent or guardian who suspects a student has sustained a concussion is expected to immediately notify district coaches or administrators of the injury. Students who suspect they have sustained a concussion shall immediately make such notification.

The injured student shall not be permitted to participate in any school supervised team athletic activities involving physical exertion, including, but not limited to, practices or games, until the student;

1. has been evaluated by a licensed health care professional;
2. has received written and signed clearance to resume participation in athletic activities from the licensed health care professional;
3. has submitted the written and signed clearance to resume participation in athletic activities to the school accompanied by written permission to resume participation from the student's parent or guardian.

If a student is reasonably suspected after observation of having sustained a concussion or brain injury and is removed from an athletic activity as required above, the parent or guardian of the student shall be notified by the school of the date and approximate time of the injury suffered by the student, the signs and symptoms of a concussion or brain injury that were observed, and any actions taken to treat the student.

The district shall establish a return to learn protocol for students that have sustained a concussion. The return to learn protocol shall recognize that students who have sustained a concussion and returned to school may need informal or formal accommodations, modifications of curriculum, and monitoring by medical or academic staff until the student is fully recovered.

It is the responsibility of the superintendent to implement this policy.

Legal Reference: Neb. Statute 71-9104

Approved _____ Reviewed _____ Revised _____

CLASSROOM ENVIRONMENT

Classrooms are expected to be maintained in a safe, orderly manner at all times in keeping with providing an appropriate, healthy learning environment. Any items for display or use in the classroom shall meet this criterion. The use of essential oils or essential oil diffusers will not be permitted in district facilities by students, staff or visitors.

Approved _____ Reviewed _____ Revised _____

BUS SAFETY PROGRAM

The superintendent shall direct the preparation of a Safe Pupil Transportation Plan that, at a minimum, shall address weapons, dangerous objects, pupil behavior, terroristic threats, severe weather, hazardous materials, medical emergencies, driver/passenger procedures in the event of mechanical breakdowns of the vehicle, and driver procedures in the event that the drop-off location is uncertain or appears unsafe to leave students. The plan shall also address general guidelines for the functional capacity of a pupil transportation driver and a process to confirm a driver's ability to conduct daily tasks and emergency evacuations.

The superintendent shall plan and implement a safety-training program for pupil transportation vehicle operators and vehicle passengers. The superintendent shall monitor the scheduling of inservice and educational opportunities for transportation personnel to improve their awareness and skills regarding pupil transportation vehicle safety. Pupil transportation vehicle operators shall attend local workshops and all inservice meetings.

Administrative rules and regulations shall be adopted to govern the safe operation of pupil transportation vehicle. Students violating these regulations may have their riding privileges revoked or suspended. Parents will be responsible for damage done to transportation vehicles or equipment by their children.

The school district shall conduct pupil transportation vehicle safe riding practices instruction and emergency safety drills at least twice a year for students who utilize school district transportation. The emergency evacuation drill procedures should be conducted according to guidelines established by the Nebraska Department of Education.

Each pupil transportation vehicle shall have, in addition to the regular emergency safety drill, a plan for helping those students who require special assistance to safety during an emergency. This shall include, but not be limited to, students with disabilities.

Pupil transportation vehicle drivers are required to attend each safety drill.

Pupil transportation operator procedures will include a prohibition against use of a handheld wireless communication device to read a written communication, manually type a written communication, or send a written communication while operating a pupil transportation vehicle which is in motion. Handheld wireless communication device means any device that provides for written communication between two or more parties and is capable of receiving, displaying, or transmitting written communication. Written communication includes, but is not limited to, a text message, an instant message, electronic mail, and Internet web sites.

All transportation vehicles shall be acquired and maintained to meet or exceed NDE

Approved _____ Reviewed _____ Revised _____

BUS SAFETY PROGRAM

The superintendent shall direct the preparation of a Safe Pupil Transportation Plan that, at a minimum, shall address weapons, dangerous objects, pupil behavior, terroristic threats, severe weather, hazardous materials, medical emergencies, driver/passenger procedures in the event of mechanical breakdowns of the vehicle, and driver procedures in the event that the drop-off location is uncertain or appears unsafe to leave students. The plan shall also address general guidelines for the functional capacity of a pupil transportation driver and a process to confirm a driver's ability to conduct daily tasks and emergency evacuations.

The superintendent shall plan and implement a safety-training program for pupil transportation vehicle operators and vehicle passengers. The superintendent shall monitor the scheduling of inservice and educational opportunities for transportation personnel to improve their awareness and skills regarding pupil transportation vehicle safety. Pupil transportation vehicle operators shall attend local workshops and all inservice meetings.

Administrative rules and regulations shall be adopted to govern the safe operation of pupil transportation vehicle. Students violating these regulations may have their riding privileges revoked or suspended. Parents will be responsible for damage done to transportation vehicles or equipment by their children.

The school district shall conduct pupil transportation vehicle safe riding practices instruction and emergency safety drills at least twice a year for students who utilize school district transportation. The emergency evacuation drill procedures should be conducted according to guidelines established by the Nebraska Department of Education.

Each pupil transportation vehicle shall have, in addition to the regular emergency safety drill, a plan for helping those students who require special assistance to safety during an emergency. This shall include, but not be limited to, students with disabilities.

Pupil transportation vehicle drivers are required to attend each safety drill.

Pupil transportation operator procedures will include a prohibition against use of a handheld wireless communication device to read a written communication, manually type a written communication, or send a written communication while operating a pupil transportation vehicle which is in motion. Handheld wireless communication device means any device that provides for written communication between two or more parties and is capable of receiving, displaying, or transmitting written communication. Written communication includes, but is not limited to, a text message, an instant message, electronic mail, and Internet web sites.

All transportation vehicles shall be acquired and maintained to meet or exceed NDE

Approved _____ Reviewed _____ Revised _____

Post-Concussion Symptom Checklist

Name: _____

Date: _____

Please indicate how much each symptom has bothered you over the past 2 days.

	Symptoms	None	Mild		Moderate		Severe	
PHYSICAL	Headache	0	1	2	3	4	5	6
	Nausea	0	1	2	3	4	5	6
	Vomiting	0	1	2	3	4	5	6
	Balance Problem	0	1	2	3	4	5	6
	Dizziness	0	1	2	3	4	5	6
	Blurry or double vision	0	1	2	3	4	5	6
	Sensitivity to Light	0	1	2	3	4	5	6
	Sensitivity to Noise	0	1	2	3	4	5	6
	Balance Problems	0	1	2	3	4	5	6
	Pain other than headache	0	1	2	3	4	5	6
THINKING/ COGNITIVE	Feeling "in a fog"	0	1	2	3	4	5	6
	Feeling Slowed Down	0	1	2	3	4	5	6
	Difficulty concentrating	0	1	2	3	4	5	6
	Difficulty Remembering	0	1	2	3	4	5	6
SLEEP ISSUES	Trouble Falling Asleep	0	1	2	3	4	5	6
	Fatigue or low energy	0	1	2	3	4	5	6
	Drowsiness	0	1	2	3	4	5	6
EMOTIONAL	Feeling more Emotional	0	1	2	3	4	5	6
	Irritability	0	1	2	3	4	5	6
	Sadness	0	1	2	3	4	5	6
	Nervousness	0	1	2	3	4	5	6

Do symptoms worsen with physical activity? Yes_____ No_____ Not Applicable_____

Do symptoms worsen with thinking/cognitive activity? Yes_____ No_____ Not Applicable_____

Activity Level: Over the past two days, compared to what I would typically do, my level of activity has been _____% of what it would normally be.


Adapted from Oregon Concussion Awareness and Management Program (OCAMP)

http://media.cbirt.org/uploads/files/sports_concussion_management_guide.pdf

Concussion Management Team (CMT) Sample Return to Learn Protocol

The CMT ensures that every student who suffers a concussion is monitored for a safe return to activity.



<p>1. Concussion occurs! </p> <ul style="list-style-type: none">• If at school sporting event or other school activity, family is notified of possible concussion
<p>2. Encourage parent to obtain medical confirmation of concussion from a licensed health care provider.</p>
<p>3. Parent signs Release of Information form allowing the school to be notified of concussion by the health care provider and for information sharing.</p>
<p>4. CMT Contact person notified of concussion by parent, coach, athletic trainer or health care provider.</p>
<p>5. CMT Contact person informs appropriate school personnel (teachers, school nurse, athletic trainer, coaches, etc.) of concussed student and specifies general accommodations from health care provider, if available.</p>
<p>6. CMT implements a gradual Return to Learn Protocol based on the individual needs of the student. (Refer to Return to Academics Progression form.)</p>
<p>7. CMT documents physical, cognitive, behavioral and emotional symptoms of concussed student and assesses the student's needs based on symptoms. (Refer to Post-Concussion Symptom Checklist).</p>
<p>8. CMT designs individual academic adjustment/accommodation plan with appropriate school staff and works with SAT process to coordinate academic adjustments/accommodations during recovery (about 2-3 weeks) and reviews with student and family.</p>
<p>9. CMT -Teachers monitor the effectiveness of adjustments, accommodations and symptoms of concussion and report progress/recovery data and results regularly to CMT contact person.</p> <ul style="list-style-type: none">• Data on progress/recovery shared with family and student.• Family tracks and regularly reports progress on physical, cognitive sleep and emotional symptoms to CMT.
<p>10. CMT makes adjustments and readjustments to individual plan until student no longer has special needs in the classroom resulting from the concussion.</p> <ul style="list-style-type: none">• Student progress and updates are communicated to appropriate school staff, family and student.
<p>11. CMT and family agree student is symptom free and function is "back to baseline" in the classroom.</p>
<p>12. Student returns to classroom full-time with no adjustments or accommodations!</p>
<p>13. Parents/guardians deliver medical clearance from the healthcare provider to the CMT and parent provides written permission for the Return to Play Progression to begin.</p>
<p>14. Student begins Return to Play Progression <u>after</u> a successful Return to Learn.</p>
<p>15. CMT ensures that the concussion date and adjustments for Return to Learn are <u>documented</u> in the student's file.</p>

- If symptoms last more than 2-3 weeks, follow up assessment and academic adjustments may need to be strengthened or remain in place longer.
- Student may need to visit physician for further evaluation.
- If problems persist, student supports may be provided through an MTSS/Rtl Plan, a Health Plan or a 504 Plan. A small percentage of students may require a referral for special education.
- CMT offers resources on concussion to educators and parents throughout the Return to Learn progression.
- **Contact BIRSST team members for information or resources on concussion for educators and parents!**



RETURN TO ACADEMICS PROGRESSION

Progression is individual. All concussions are different. Students may start at any of these steps, depending on symptoms, and may remain at a step longer if needed. If symptoms worsen, the CMT should reassess. If symptoms quickly improve, a student may also skip a step or two. Be flexible!

Steps	Progression	Description
1	HOME – Cognitive and physical rest	<ul style="list-style-type: none"> ➤ Stay at home ➤ No driving ➤ Limited mental exertion – computer, texting, video games, homework
2	HOME – Light Mental Activity	<ul style="list-style-type: none"> ➤ Stay at home ➤ No driving ➤ Up to 30 minutes mental exertion ➤ No prolonged concentration

Progress to Step 3 when student handles up to 30 minutes of sustained mental exertion without worsening of symptoms.

3	SCHOOL – Part Time Maximum adjustments Shortened day/schedule Built-in breaks	<ul style="list-style-type: none"> ➤ Provide quiet place for scheduled mental rest ➤ Lunch in quiet environment ➤ No significant classroom or standardized testing ➤ Modify rather than postpone academics ➤ Provide extra time, help, and adjustment of assignments
---	---	---

Progress to Step 4 when student handles 30-40 minutes of sustained mental exertion without worsening of symptoms.

4	SCHOOL – Part Time Maximum adjustments Shortened day/schedule	<ul style="list-style-type: none"> ➤ No standardized testing ➤ Modified classroom testing ➤ Moderate decrease of extra time, help, and modification of assignments
---	--	---

Progress to Step 5 when student handles 60 minutes of mental exertion without worsening of symptoms.

5	SCHOOL – Part Time Minimal adjustments	<ul style="list-style-type: none"> ➤ No standardized testing; routine tests are OK ➤ Continued decrease of extra time, help, and adjustment of assignments ➤ May require more support in academically challenging subjects
---	--	---

Progress to Step 6 when student handles all class periods in succession without worsening of symptoms AND receives medical clearance for full return to academics and athletics.

6	SCHOOL – Full Time Full academics No adjustments	<ul style="list-style-type: none"> ➤ Attends all classes ➤ Full homework and testing
---	---	--

When symptoms continue beyond 3-4 weeks, prolonged in-school supports are required. Request a 504 meeting to plan and coordinate student supports.

© 2013 ORCAS www.orcasinc.com Adapted with permission from Oregon Concussion and Management Program (OCAMP) and Slocum Sports Concussion Program

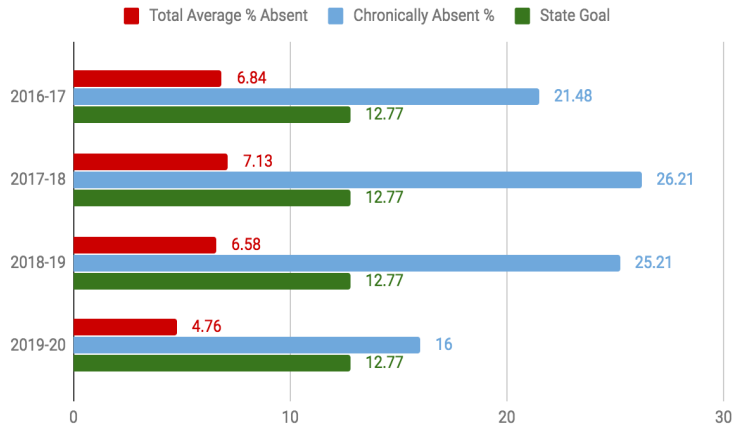
Schuyler Community Schools - 2019-2020 Priority Plan Report

Focus Goal: During the 2019-2020 school year, Schuyler Central High School will reduce its chronic absenteeism rate by five percent annually (this percent decrease matches the state chronic absenteeism reduction percentage).

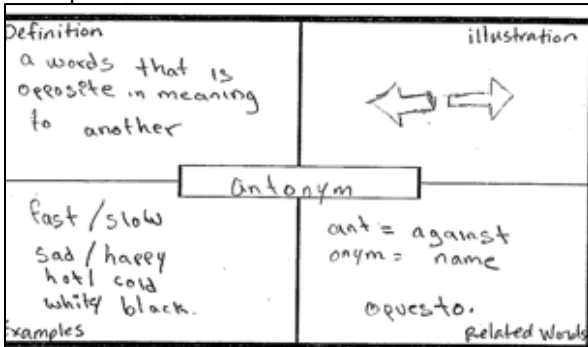
- Established an attendance team to examine and report attendance data
- Established a schoolwide campaign to communicate the importance of on-time and daily attendance ([Every Minute Counts](#)).
- Explored options of notification systems and follow-up to provide reminders
- Created a [time for time](#) system to improve tardies and ensure instructional time is a priority
 - Recovered 18,773 minutes
- The chart to the right compares Schuyler Chronic Absenteeism data to the State Goal

Next Step: Establish and implement an attendance protocol to implement in the 2020-21 school year.

Chronic Absenteeism



Sample Cornell Notes



Focus Goal: During the 2019-2020 school year, EL students will develop language acquisition and cognitive academic language skills in order to grasp the academic, social and cultural aspects of the English language to be successful students and members of society as evidenced by multiple data sources to include ELPA 21 scores, ACT scores, student perceptual data, etc.

- Identified and incorporated essential vocabulary in all classes
- Implemented a school-wide template for direct vocabulary instruction
- Adopted the use of Cornell notes and guided Cornell notes in all classes
- Expanded EL staffing and offered counseling to English Learners and lesson planning/instructional coaching support for teachers
- Fully adopted [iLit](#) and [ELLEvation](#) instructional support programs
- Focused on ACT preparation supports for English Learners, including timely and specific feedback on writing samples

Next Steps: Continue revising the English Learner intake structures currently in place to ensure proper course placement and support as well as the creation of a newcomer academy. Finalize and implement the newly created intervention protocols to better assist English Learners and students with disabilities.

Percentage of Students Progressing or Proficient				
	2016-17	2017-18	2018-19	2019-20
9th	14%	47%	60%	50%
10th	22%	26%	55%	42%
11th	39%	32%	39%	53%
12th	50%	57%	40%	67%
Overall Proficiency	0%	0%	3%	4%

Focus Goal: Schuyler Central High School will identify and construct strategies to remove barriers to student learning, track graduation progress annually for 100% of students, and increase graduation rates to at or above the State average by 2020-2021.

- Developed a Graduate Profile to identify expected characteristics of a Schuyler Graduate
- Adopted a **“Failure Isn’t Final”** mentality
- Interviewed students to determine barriers to graduation
- Created protocols for intervention of struggling students
- Utilized principles of Capturing Kids’ Hearts during FOCUS and throughout the instructional day
- Projected 80% graduation rate for 2020, which would be a 2% increase over 2019

Next Steps: Implement protocols for intervention with fidelity and add a 0 period and 9th period to increase opportunities for interventions, unfinished learning and credit recovery.



Student Interview Responses:

“It is helpful that teachers are willing to help students. They come early and stay late and try to give them the best chance to succeed. There is a positive environment from other students too that creates a good environment for all students to learn.”



Student Interview Responses:

“I agree that the teachers are really helping. The counselors help map out our plan.”

“The thing that has helped me a lot is ESL. It’s the best class. I like all the classes and how they teach. The best thing I like is the ESL class.”

Focus Goal: By May 2020, students at Schuyler Central High School will have equitable access to a high-quality education to achieve their full potential as a result of universal instruction aligned to Nebraska standards, strong Tier 2 and Tier 3 academic supports as needed and personalized learning opportunities as evidenced by multiple measures to include growth indicators on the MAP assessment, ACT data, perceptual data, etc.

- Updated all proficiency scales, essential standards, and scope & sequence
- Created, posted and communicated learning targets based on priority standards and proficiency scales
- Created essential vocabulary and learning targets for all classes
- Completed two rounds of [teaching studies](#) in the second semester
- Increased consistent coaching on evidence-based instructional practices provided to classroom teachers by administrators
- Administrators participated in a [book study](#) and read/discussed various articles related to instruction
- Created a schoolwide ACT Prep Plan and provided [ACT Writing Training/Scoring](#) for Juniors and 8th-12th grade teachers

Next Steps: Purchase and implement a new aligned ELA curriculum; implement a “data dig day” at least once a month for the 2020-21 school year.; Implement Assessment/Data Protocol

Sample of Essential Standards and Proficiency Scale

English 11

- **LA 12.1.6.a** Evaluate the meaning, reliability, and validity of text considering author’s purpose, perspective, rhetorical style, and contextual influences.
- **LA 12.1.6.b** Analyze and evaluate the relationships between elements of literary text (e.g., characterization, setting, plot development, internal and external conflict, inferred and recurring themes, point of view, tone, mood).
- **LA 12.1.6.c** Analyze the function and critique the effects of the author’s use of literary devices (e.g., allusion, symbolism, metaphor, personification, epiphany, oxymoron, dialect, tone, mood).

Analyzing Literary Texts		
Score	LA 12.1.6.b: Analyze the relationships between elements of literary texts (e.g., characterization, setting, plot development, internal and external conflict, inferred and recurring themes, point of view, tone, mood).	Sample Activities
4.0	The student will: • Provide examples of literary elements in texts or media	Defend the claim that F. Scott Fitzgerald presents several themes in <i>The Great Gatsby</i> , including greed, power, betrayal, social stratification, and the American dream, but that social stratification is the strongest theme in the text.
3.5	In addition to score 3.0 performance, partial success at score 4.0 content	
3.0	The student will: • Analyze the main ideas or themes in a text	Explain why gender is a theme of William Shakespeare’s <i>The Tragedy of Macbeth</i> or why American ideals are a main idea of Lincoln’s “Gettysburg Address”.
2.5	No major errors or omissions regarding score 2.0 content, and partial success at score 3.0 content	
2.0	The student will recognize or recall specific vocabulary (for example, <i>connection, detail, main idea, paragraph, person vs. nature, person vs. person, person vs. self, person vs. society, section, text, theme, topic</i>) and perform basic processes such as: • Identify important details and claims in a text. • Identify repeated details in a text. • Describe details and claims in a text. • Identify connections between important details or claims in a text. • Describe how repeated details change over the course of a text. • List common themes found in texts (such as person vs. nature, person vs. person, person vs. self, person vs. society, loyalty, family, ambition, independence, struggle against society). • Identify passages in a text related to a specific main idea or theme.	
1.5	Partial success at score 2.0 content, and major errors or omissions regarding score 3.0 content	
1.0	With help, partial success at score 2.0 content and score 3.0 content	
0.5	With help, partial success at score 2.0 content but not at score 3.0 content	
0.0	Even with help, no success	

Plans for addressing unfinished learning and creating a baseline:

Summer School - Schuyler Central High School will host summer school from July 6 through July 24. There will be two sessions, 8:30am to 11:30am and 12:30am to 3:30pm. Seniors who were not able to finish coursework during distance learning this spring will be required to attend. Classes will consist of less than 10 students, whether we are online or on campus in order to provide more one to one assistance. As a part of summer school, we are creating plans to assess students on specific standards using Star Custom Assessments, which are five to seven questions and are available in Spanish. The results of these formative assessments will enable teachers to personalize instruction for students.

Fall 2020 - We will administer a STAR Renaissance screener for Reading and Math and a Fall MAP Benchmark assessment in order to compare data between the two assessments and missed standards to determine unfinished learning needs. Students can then be assigned interventions in both the Renaissance system or in MAP skills. SCHS will add a zero and 9th hour in order to increase opportunities for interventions, unfinished learning and credit recovery. Schuyler administrators and priority school consultants have created protocols for consistent implementation of Assessments and Data Analysis as well as an Intervention system to implement at the start of next school year. To meet the needs of our diverse learners, an onboarding process for students new to the country and students who have a limited or interrupted formal education has also been developed and will be implemented

SCHUYLER CENTRAL HS

—

SIG Presentation 6/5/2020

Reason the building was identified

NeSA Scores

Percent Proficient: Meets/Exceeds Combined

Data Years	Mathematics	Reading	Science
2013-14	37%	61%	63%
2014-15	44%	68%	54%
2015-16	36%	58%	49%

Reporting Metrics

	2015-16	2016-17	2017-18	2018-2019	2019-2020
Percentage of LE proficient	5%	0%	0%	2%	3%
Graduation Rate	82.44%	90.24%	86.00%	78%	80%
College Enrollment Rate	43%	45%	65%	74%	67%

Leading Indicators

	2015-16	2016-17	2017-18	2018-19	2019-2020
Number of Minutes	68,982	66,540	71,649	67,377	52015
advanced coursework	64	139	159	156	159
dual enrollment	50	171	92	58	90
Advanced Coursework and Dual Enrollment	26	39	40	39	56

Leading Indicators

	2015-16	2016-17	2017-18	2018-19	2019-20
Drop out rate	2.59%	1.87%	3.06%	2.80%	2.69%
Student attendance rate	92%	93.55%	93.72%	92.77%	94%
Discipline Incidents	73	15	19	8	8
Truants	9	3	9	17	17

Leading Indicators

	2015-16	2016-17	2017-18	2018-19	2019-20
Distribution of teachers by performance level on evaluation system	Ineffective - 33% Developing - 59% Effective - 8% Highly Effective - 0%	Ineffective - 20% Developing - 50% Effective - 30% Highly Effective - 0%	Ineffective - 5% Developing - 78% Effective - 18% Highly Effective - 0%	Ineffective - 0% Developing - 40% Effective - 55% Highly Effective - 5%	Ineffective - 0% Developing - 16% Effective - 80% Highly Effective - 4%
Teacher Attendance Rate	97%	91%	92%	92%	93%

Increased Learning Time

- Schuyler Community Schools has a Friday, 1:30 dismissal for PLC's. This year the high school changed to a 2:00pm dismissal to have additional class time.
- Remote learning took place with a combination of packets and online meetings.
- We continue to expand summer school
- We have had a Saturday school for the last three years.

Average ACT Score

2016-2017	16.0
2017-2018	16.2
2018-2019	16.8
2019-2020	N/A

ACT

Percent Meeting Expectations

Data Years	ELA	Math	Science
2016-17	27%	21%	25%
2017-18	19%	23%	23%
2018-19 (preliminary)	29%	29%	29%

ACT

Average Scale Scores

Data Years	ELA	Math	Science
2016-17	14.7	16.4	16.1
2017-18	13.6	16.5	16.5
2018-19 (preliminary)	14.2	16.1	16.5

Action Plan Progress

DIGITAL LEADER CORPS

- A main goal is to build teacher leadership. Teacher Leaders show off skills in “Learning Labs”. Other teachers observe instructional strategies in classrooms of teacher leaders.
 - A new cohort of teachers began training this year.
 - Previous cohorts continued to be open for learning labs.

Action Plan Progress

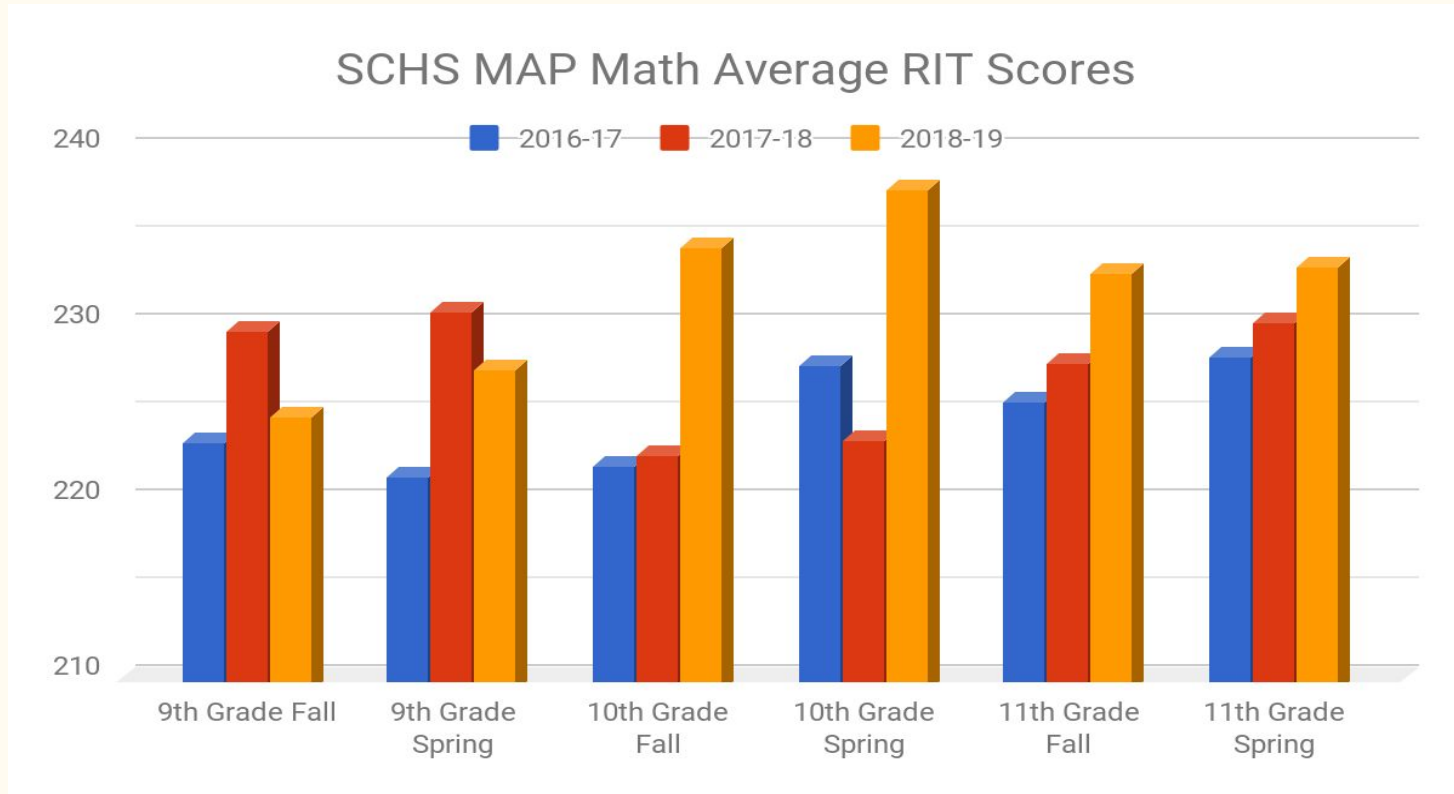
PROJECT BASED LEARNING

- Started year with new cohort and new consultant.
- Teachers have been learning Discovery Educations STEM and Project Based Learning methods
- Began developing a project around hunger in Colfax County.

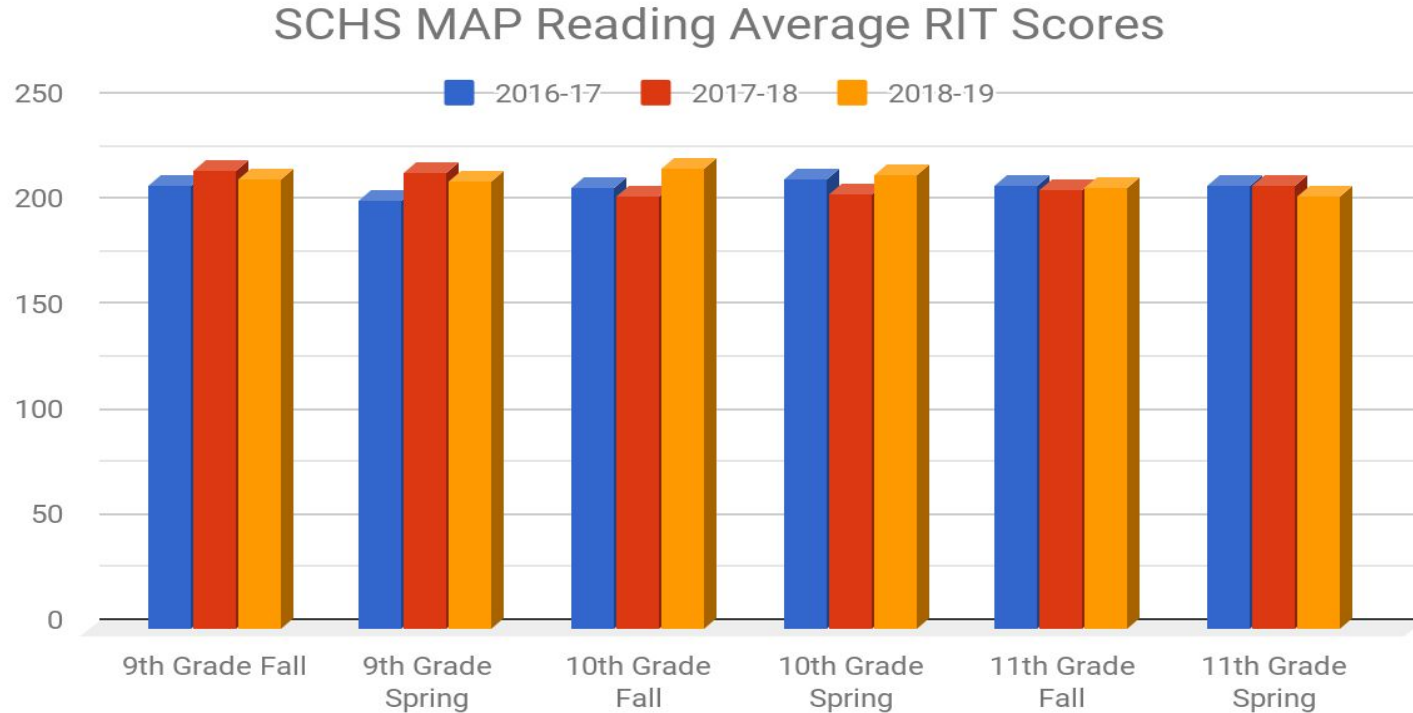
Action Plan Progress

- ESU staff developers have been engaged in Cognitive Coaching with staff and principals.
- Teachers have learned the Data Driven Dialog protocol.

Other Data - No new data for 2020



Other Data - No new data for 2020



Staff Paid by SIG

- Curriculum Director - paid a portion as IPM
 - Dave Gibbons
 - Is also director of school improvement for the district
 - Will continue after grant is over

2019 - 2020 Timeline

Discovery Education - Digital Leader Corps

- Started first year of grant. Two cohorts of 4 teachers each.
- This year - new cohort of 4 teachers.
- Met for Professional Development 4 times
- Met for Coaching 14 times
- Met with Admin 2 times
- Are planning some summer meetings to make up for meetings missed during quarantine.

2020 - 2021 Timeline

Discovery Education - Digital Leader Corps

- New PD Facilitator with Discovery Education
 - Previous retired - 6 years in the district
- We have scheduled:
 - 5 days of Professional Development
 - 15 days of Instructional Support
 - 4 days of Admin Support

2019-2020 Timeline

Discovery Education - STEM Leadership Corps

- New PD Facilitator with Discovery Education
 - New Cohort of 4 teachers
- Met 4 days of Professional development
- Met 10 days for Instructional Support - coaching
- Have met virtually twice since quarantine.

2020-2021 Timeline

Discovery Education - STEM Leadership Corps

- We have planned 5 days of PD
- 15 days of Instructional Support
- 5 days of Admin Support starting August 4 & 5.

Conclusions

- Generally speaking, improvements are being made.
 - Stronger culture
 - More engagement
 - Better instruction
- Not showing in assessment scores

Lessons Learned

- Add accountability to Discovery Ed
- Working to better coordinate Priority Plan with SIG Plan.
- Keep holding ourselves to a higher standard.

Questions?



Table of Contents

Introduction	1-2
Guiding Principles for Summer School and Summer Learning	3
Organizing for Success	4-8
Social and Emotional Learning (SEL)	9-11
Instructional Materials and Assessment.....	12-13
Professional Learning	14
Family Engagement.....	15
Endnotes	16

This guidance document is advisory in nature but binding on an agency until amended by such agency. A guidance document does not include internal procedural documents that only affect the internal operations of the agency and does not impose additional requirements or penalties on regulated parties or include confidential information or rules and regulations made in accordance with the Administrative Procedure Act. If you believe that this guidance document imposes additional requirements or penalties on regulated parties, you may request a review of the document. For comments regarding these documents contact nde.guidance@nebraska.gov.

NOTE: This document utilizes a resource created by the Council of Chief State School Officers (CCSSO) based on guidance from state education agencies and national and local organizations.

Introduction

Educators are working under extraordinary circumstances as the 2019-2020 school year ends. The transition to remote learning has shone a spotlight on long-standing inequities across communities.¹ Given the impact of extended building closures on student learning, summer school is a strong strategy to ensure that all children continue their academic and social emotional learning and receive the health services they need until they re-enter school buildings.

The purpose of this document is to provide guidance that school districts and school systems can use as they plan summer learning opportunities. This document offers resources and considerations based on what has been learned in the shift to remote learning and the research behind summer learning. It is well-documented that students often begin the academic year at achievement levels lower than when they left school the prior year, a gap known as the "summer slide."² Current projections show that there will be even greater gaps in student achievement due to extended COVID-19-related school closures.³

Together, these lessons provide a call to action for district leaders to ensure summer learning opportunities exist as a bridge between the 2019-2020 and 2020-2021 school years, especially for the most vulnerable students. In the current context, families and educators are doing their best to ensure continuity of student learning while balancing their own work, child care, and self-care. Ensuring time and the availability of resources to prioritize the social, emotional, and mental health needs of families and educators during summer school is paramount.

Consider how the focus for summer learning might shift in response to COVID-19 circumstances:

	From... Traditional Summer School	To... Summer Learning 2020
Goals of Summer Learning	<ul style="list-style-type: none"> • Intervention and remediation • Credit recovery 	<ul style="list-style-type: none"> • Frontloading the next school years' learning to give students a jumpstart to SY20-21 • Maintaining social and emotional connections and academic opportunities for at-risk students • Intervention and credit recovery
Target Students	<ul style="list-style-type: none"> • Students who are furthest behind • Secondary students who need to meet promotion requirements or complete graduation credit(s) 	<ul style="list-style-type: none"> • Students who are at risk socially or emotionally and need connections with peers and adults • Students who are furthest behind • Secondary students who need to meet promotion requirements or complete graduation credit(s)
Family Engagement	<ul style="list-style-type: none"> • Written communication to keep family members informed of student progress 	<ul style="list-style-type: none"> • Regular online meetings throughout summer learning • Written communication to keep family members informed of student progress
Assessment	<ul style="list-style-type: none"> • Assessment for evaluation or summative purposes • Frequent assessment to inform grading 	<ul style="list-style-type: none"> • Low-stakes assessment for formative purposes • Establish competencies for ELA and mathematics, aligned to focused work of the prior and upcoming grade • Capture qualitative information about a student's progress on particular competencies rather than use a traditional grade measure
Professional Learning and Collaboration for Teachers	<ul style="list-style-type: none"> • One day in advance of summer school opening for classroom set up 	<ul style="list-style-type: none"> • Grade- and curriculum-specific training in a remote delivery model • Regular common planning time for grade-like teachers to plan virtual lessons, connect with social-emotional learning (SEL) staff and intervention teachers • Regular faculty meetings to ensure staff wellness and opportunities for problem-solving

Many of the summer learning practices recommended in this document are evidence-based and applicable to any summer learning format. For example, recent evidence suggests that expanding summer learning beyond remediation to provide students with rigorous opportunities to preview and practice knowledge, and skills aligned to upcoming grade-level standards, is effective at bolstering student achievement.⁴ Likewise, providing social and emotional learning supports for students yields benefits in more traditional school contexts.

The need for these practices is even more essential in the current climate, as students and families adapt to distance learning environments. Unfinished learning is becoming more acute, and families are experiencing fatigue with distance learning and the myriad packets, video calls, and phone calls the model often entails. States have an opportunity to streamline, prioritize, and personalize virtual summer school to build meaningful academic and emotional connections for students and their families.

Guiding Principles for Summer School and Summer Learning⁵

Prioritize vulnerable students and those who need to meet promotion benchmarks and high school credit. Provide regular, additional support for specific students, especially students learning English, students with disabilities, and students who are homeless or migrants.

Focus on student success in the coming school year. Rather than focus solely on remediating learning gaps from the prior year, provide summer learning activities aligned to upcoming grade-level standards to set students up for success the following year.

Focus summer learning on a few critical areas. What are the most essential standards or knowledge and skills a student needs to gain to start the year successfully? For a shortened summer schedule, prioritize daily instruction in English language arts, mathematics, physical education, and social and emotional wellness.

Hire effective teachers to support students. Prioritize those teachers with content and pedagogical knowledge and a track record of success teaching target grade levels of students.

Prioritize regular communication with families and students. Consider how and when your students best engage in learning: What content can they work on independently? What type of guidance and support do they need? Do families have what they need to support their children?

Engage a cross-functional team in front-end planning. Teachers, principals, and principal supervisors will be the front-line providers and supporters of children, so ensure that their voices and needs are built into the plan. Include community-based partners who can provide support in a virtual model and include parents and guardians who may be the closest overseers of their children's work.

Leverage current distance learning best practices. Keeping the above guidelines in mind, use materials and formats that work best for distance learning, and supplement where needed.

Organizing for Success

While most school district/school system leaders have led rapid efforts to assess student needs and pivot to remote learning environments for the remainder of the 2019-20 school year, planning for summer learning brings unique challenges.⁶ Aligning staffing, funding, and other essential resources for larger numbers of students than may be typical, in an environment that is atypical, will require creativity and shared leadership to ensure that all learners feel safe and prepared to engage.

As you develop your summer learning plan, consider the guiding questions below. Vetted resources and tools that could support decision-making follow.

Planning & Communication

- Who needs to be at the table as you plan your summer learning strategy (e.g. teachers, specialists, IEP teams, teachers' union representatives, principals, principal supervisors, partner organizations, IT, student support services, food service, family/community advocates, etc.)?
- How are families' perspectives and experiences centered in your communication plan? How and at what points in your planning process will you communicate decisions to families and other key stakeholder groups?
- What data and information will you collect to assess the implementation and impact of your summer learning plan? With whom and how will you share information to ensure coherence?

Delivery Model

- Based on your students' access to the internet and relevant devices, will you pursue a digital, hybrid, or analog (offline) model for summer learning? If digital or hybrid, what balance will you strike between synchronous and asynchronous learning?
- For students who do not engage with instructional materials, regardless of format, what strategy will you implement to connect with them?
- For students who work in an analog environment, how will teachers meet and provide feedback on their work?

Staffing

- Will you provide counseling and/or other support services over the summer? Will these services be available to summer learning students only or to all students? How will you communicate to all staff about how and to whom referrals for wraparound services (e.g. counseling, medical services, food resources) should be directed?
- If you are enrolling a larger student group than in previous years to account for greater need for summer learning and/or need for social-emotional connection, how will you select and fund additional staff, both teaching and non-teaching, to support those additional students?
- How will you define the role of summer learning principals and other administrators in a virtual context? Will you expect them to observe instruction and provide feedback to teachers? Will principals be expected to connect regularly with students and families? How will principals support the social and emotional needs of faculty members?
- If you work with community partners, how will you communicate and align your whole child supports (e.g. use the same tech platforms, share data, and communicate jointly and consistently with teachers and families)?

Scheduling

- If implementing a shorter work day, how will you provide collaborative planning time for summer learning instructors?
- How will you structure teachers' time to allow for both individual student check-in time and the opportunity to assess student work and provide high-quality feedback? Especially at the elementary level, how often will teachers be synchronously working with a group of students?

Content Priorities

- Which content priorities or learning outcomes will you focus on for each grade level?
- If you utilize high-quality instructional materials, what is the most essential content and aligned instructional activities in which students should engage?
- If you do not utilize high-quality instructional materials, from what high-quality, standards-aligned instructional resource(s) will you select instructional activities (see resources section below for suggestions)?

Equity and Access

- For students who cannot access online materials or have difficulty accessing synchronous opportunities, how will you ensure equitable access to materials and instruction?
- How will lessons be delivered for students with IEPs? How will teachers and support staff provide appropriate supports and services for these learners and their families?
- How will you maintain communication with students experiencing homelessness or home instability? How will you support those students in accessing instructional materials, meal options, and other essential needs for summer learning?
- How will you maintain communication with multilingual learners, their families, and their communities? How will teachers and support staff provide linguistically appropriate supports for summer learning activities?

Funding

- How are you planning to pay for summer learning (e.g. Title I, II, and IV funding streams, private and public grants, etc.)?
- For anticipated higher enrollment or expanded programming, what funding sources are available to you from local, state, and federal sources?
- Can you repurpose resources reserved for in-person summer experiences or other expenses no longer needed to support summer learning instead?
- Are there private organizations or foundations in your community that you might be able to partner with to fill funding gaps and/or support wraparound services?

Privacy & Security

- How will you ensure alignment with FERPA, COPPA, and other relevant regulations?

Dimension	Resources
Planning & Communication	<p>Instruction Partners: Communication and planning templates</p> <p>Texas Ed. Agency (TEA): Four-phase toolkit for continued learning models (including Excel planning tool)</p>
Delivery Model & Staffing	<p>Instruction Partners: Decision tree and key questions for delivery models</p> <p>Louisiana DOE: Staffing toolkit</p> <p>CRPE: State and district summaries of virtual learning models</p>
Scheduling	<p>CCSSO: Sample summer learning schedule</p> <p>Texas: Sample schedules Suggested Daily Schedules and planning resources</p> <p>TNTP: Sample academic year remote learning schedule</p> <p>Instruction Partners: K-5 sample ELA & math remote learning schedules</p>
Content Priorities	<p>Nebraska Content Resources</p> <p>Instruction Partners: a comprehensive toolkit for remote learning, including sample lessons</p> <p>National Standards for Quality Online Learning: Standards and examples for the lesson, course, and program level</p> <p>Alabama DOE: Critical standards list for prioritizing instruction</p>

<p>Equity & Access</p>	<p>Minnesota DOE: Key questions for equitable distance learning</p> <p>Opportunity Culture: Guide to cost-effective technologies for engaging students</p> <p>Louisiana DOE: High-tech and low-tech options for accessibility (see appendix A)</p> <p>WIDA: Strategies for teaching multilingual learners online</p> <p>Diverse Learners Cooperative: Guidance on hosting virtual IEP meetings</p> <p>Texas Ed. Agency: Checklists for serving students with disabilities</p> <p>TNTP: Specialized supports for students with diverse learning needs</p> <p>MA DESE: Remote learning guidance for English learners</p> <p>Louisiana DOE: Continuous education for students with disabilities</p> <p>CCSSO: Resources for the education of students with disabilities</p> <p>Educating All Learners Alliance: Resource library</p>
<p>Funding</p>	<p>Committee for Children: 3 federal sources for SEL funding assistance</p> <p>Minnesota DOE: 21st Century Community Learning Centers (Title IV) state by state guidance may differ)</p>
<p>Privacy & Security</p>	<p>Nebraska Student Data Privacy Resource</p> <p>USDOE: Guidance on FERPA during COVID-19</p> <p>EdWeek: How to keep students safe videoconferencing</p>

Social and Emotional Learning (SEL)

Since mid-March, schools have struggled to determine how best to ensure continuity of learning for all students in a remote environment. This includes social emotional in addition to academic learning. Given student and staff isolation from peers and colleagues, the provision of social, emotional, and physical health supports is critical to address during summer learning.

Educators will need to pay even more attention to students' social and emotional needs in relation to learning. Some may have lost loved ones, have family members who may have lost jobs or are sick, or may have been confined themselves in unsafe situations. It will therefore be critical for schools to provide more wrap-around services that support students' mental, emotional, and physical health needs that focus on:

- Building a culture in which relationships are prioritized and all students and adults feel safe, supported, as well as a sense of belonging and agency;
- Dedicating time to re-socialization and to developing social-emotional skills and mindsets that are reinforced and practiced across instruction; and
- Identifying students who have had traumatic experiences and helping them access local and culturally relevant supports.

As provisions for these supports become a part of your summer learning plan, consider the following guiding questions:

Guiding Questions

- How much time during the summer learning schedule will you plan to attend to students' social and emotional learning? (See sample schedules in the section "Organizing for Success.")
- What materials/programs will you use? How will you ensure that they are organized around a high-quality SEL curriculum?
- How will you identify staff and students who have had traumatic experiences and help them access local and culturally relevant supports remotely?
- Will students participate in activities such as mindfulness, yoga, or other physical and emotional health practices?
- What platforms will be available for students to interact with their peers, their teachers, one on one, and in groups to build and maintain collaboration and connections?

Consider the following curricular resources for SEL:

Grade Level	Resources
K-5	The PATHS Program Second Step: COVID-19 resources Sanford Harmony
6-12	Facing History Sanford Harmony
K-12	Baltimore City Schools: Supporting SEL during COVID-19 through office hours (video) CASEL: SEL for children and adults-organized around the 5 CASEL competencies PanoramaEd: SEL toolkit for adults and students BrainPOP: SEL lessons, activities, and resources for all students (ELL resources included) Edutopia: Strategies for motivating students with disabilities at home Culturally-Responsive Teaching & The Brain: 5 tips for strengthening academic mindsets EdSurge: 10 ways parents can bring social-emotional learning home Minnesota: Strategies for SEL for gifted learners during COVID-19

Social Emotional Learning for Teachers and Staff

Providing continuity of remote instruction and services is a significant challenge. Teachers and service providers may be primary caregivers in their home and struggle to find uninterrupted time, leading to emotional and physical drain. They may have access to limited resources and face the same uncertainty and isolation experienced by workers across the nation.

So, just like their students, teachers and other staff will need social and emotional support to work effectively in this new reality. As you build staff supports into your summer learning plan, consider the following guiding questions:

Guiding Questions

- How will you engage teachers and support staff prior to the start of summer learning in order to build a community of support?
- What are the 1-3 most essential remote teaching and SEL strategies you hope educators apply during summer learning?
- Given the time and capacity constraints for summer educators, how will you deliver professional learning around these essential strategies?
- How will teachers and other staff participate in activities such as mindfulness, yoga, or other physical and emotional health practices?
- What platforms will be available for teachers and other staff to interact with their peers and/or their supervisors, in order to build and maintain collaboration and connections?

Resources

[Panorama Education: SEL and Self-Care Resources for Educators](#)

[Aperture Education: SEL strategies for adults and students](#)

[Aperture Education: Educator reflection and social-emotional training guide](#)

[Teaching Tolerance: Resources for supporting educators, including “do something” adaptable projects](#)

[Edutopia: 4 guiding questions for remote learning](#)

[Chula Vista Elementary School District: Exemplar weekly email to educators](#)

Instructional Materials and Assessment

Instructional materials play an important role in how students are taught, and evidence shows that putting high-quality instructional materials in the hands of teachers can have a significant positive impact on student achievement⁷. Districts can choose from a plethora of high-quality instructional materials (see below for vetted, and in many instances free, options) as they plan for students' summer learning in 2020.

Still, with or without high-quality instructional materials, teachers will need to determine evidence-based content priorities in mathematics and literacy to focus on throughout summer school. Time and attention must be spent on instruction and specifically on prioritized grade-level instructional content for ELA/literacy and mathematics. Educators can use information gained from formative assessment as primary data regarding what students know and can do. Formative assessment practices during summer school can occur through exit tickets, student work, and student discussions or through clear demonstration of specific competencies. In many cases, recommendations for these practices can come from high-quality instructional materials.

Guiding Questions

- What instructional materials and resources will you use? (See resources section below for vetted options.) How will you ensure that they reflect both content area standards and the instructional shifts?
- How will your summer learning instructional materials jumpstart student learning in fall 2020? How will you support teachers to prioritize essential content for the fall?
- How will you support teachers to plan and use effective formative assessment practices as a primary means of data collection to inform instructional decisions?
- How will students in K-2 who have not mastered foundational skills be assessed and taught missing skills to close knowledge gaps prior to fall 2020?
- What additional supports will be employed for students who experience unfinished learning?

Area	Resources
<p>High-Quality Curricula for ELA & Math</p>	<p>Nebraska Instructional Materials Matter</p> <p>CCSSO: High-quality curriculum resources for states for remote learning</p> <p>Student Achievement Partners: Recommended instructional materials for K-2 foundational skills</p> <p>Zearn Math Distance Learning</p> <p>Great Minds: Summer learning lessons (recommended to be used with students who have not attended, or minimally attended the 4th quarter SY2019-2020)</p>
<p>Assessing Student Progress</p>	<p>SAP's Foundational Skills Assessment Protocol</p> <p>Curriculum Assoc iReady Assessment Foundational Skills</p> <p>USDOE: Competency-based learning guidance with state and district examples</p> <p>Dylan Wiliam: Formative assessment guidance</p>

Professional Learning

Highly effective teachers are the most critical in-school variable that leads to increased student achievement. Teacher professional learning is an essential ingredient of any school's improvement path, and summer learning is no exception. All educators need time to collaborate and adjust instructional plans as they learn to teach virtually. Even in a virtual environment, the principles of effective adult learning remain constant.⁸ As you plan to provide educator professional learning in a virtual environment, consider the following guiding questions.

Guiding Questions

- Given the time and capacity constraints for summer educators, how will your district prioritize professional learning to focus on the most essential teacher skills or strategies?
- How will your district ensure that teachers are trained in the remote delivery of the summer learning and the learning management system in place?
- How will the teacher workday reflect the district's commitment to collaborative learning and coaching?
- How will your district ensure that principals are trained in virtual supervision and support of the summer learning curriculum?
- How will you prepare educators to elevate student interest and engagement in instructional tasks (though not at the expense of essential learning outcomes)?

Resources

[Learning Policy Institute: Effective professional learning principles](#)

[Novak Education: Timeline for UDL implementation \(for an academic year, but aspects adaptable\)](#)

[Learning First: How curriculum focuses teacher learning on student learning](#)

[National Staff Development Council: What does research suggest about effective professional learning?](#)

[Understood.org: Best practices for online learning](#)

Family Engagement

At-home learning has added a new level of stress and responsibility for many families. As parents and caretakers adjust to working from home or loss of work altogether, they also are becoming the key support for their children's daily learning. For families to continue to support their children's learning at home, districts and schools will need to continue to strengthen communication, support, and access to parents and caregivers.

Guiding Questions

- What forms of communication, proven to be successful with families, will you continue to use to inform and guide parents before, during, and after summer learning? What might you need to add/modify? What key district/system and school staff will be charged with these tasks?
- How will you assess the availability of devices and web access of students you serve? How will you address the gap in technology that still exists for students and families in preparation for summer learning?
- What school district/school system resources/services will you provide in order to support families with at-home summer learning? With what frequency will teachers be expected to connect with every child's family during summer learning?
- How will you work with community partners and organizations to secure resources/services for families during summer learning? What data or information-sharing structures will you need to implement? How will you communicate clearly to families about how to access these services?
- How can parent organizations mobilize to support families with communication, problem solving, and access to district and community services during summer learning?
- In what ways might parents be acknowledged, thanked, and appreciated for their work and effort with at-home learning?
- How will you communicate to families about their child's progress on specific knowledge areas or skills, as opposed to a traditional grade report?

Resources

[PTA: Coronavirus resources for families](#)

[Springboard Collaborative: Weekly at-home reading schedules and resources \(including texts\)](#)

[Parent Academy Miami: Virtual academy](#)

[PBS: Resources for parents](#)

[Iowa: Family engagement guidance](#)

[Oregon: Family engagement guidance](#)

[New Mexico: Teacher-family check-in recommendations](#)

[Minnesota: Resources for supporting mental health during COVID-19](#)

[Minnesota: School climate considerations during distance learning](#)

[Minnesota: Engaging families during distance learning](#)

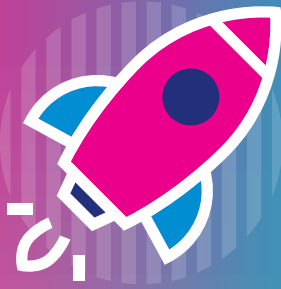
[Minnesota: Setting up individual communication systems with students and families](#)

[Minnesota: Supporting immigrant and refugee families during COVID-19](#)

[Minnesota: Age-specific engagement strategies for students](#)

Endnotes

1. AFT, et al. (2020, Apr 29). *Joint statement of education and civil rights organizations concerning equitable education during the COVID-19 pandemic school closures and beyond*. <https://www.naacpldf.org/wp-content/uploads/Joint-Statement-of-National-Education-and-Civil-Rights-Leaders-on-COVID-19-School-Closure-FINAL-4.29.20.pdf>.
2. Quinn, D. & Polikoff, M. (2017). *Summer learning loss: What is it, and what can we do about it?*
3. Brookings Institution. <https://www.brookings.edu/research/summer-learning-loss-what-is-it-and-what-can-we-do-about-it/>.
4. Kuhfeld, M. & Tarasawa, B. (2020, April). *The COVID-19 slide: What summer learning loss can tell us about the potential impact of school closures on student academic achievement*. Collaborative for Student Growth: NWEA Research. https://www.nwea.org/content/uploads/2020/04/KAP5122-Collaborative-Brief_Covid19-Slide-APR20_FW.pdf.
5. Schwartz, et al. (2018). *Getting to work on summer learning: Recommended practices for success*. Rand Corporation (2nd ed). https://www.rand.org/pubs/research_reports/RR366-1.html.
6. Adapted from Instruction Partners. (2020). *Covid-19 school resource hub*. <https://www.schoolresourcehub.org/>.
7. Reich, J., et al. (2020, Apr). *Remote learning guidance from state education agencies during the COVID-19 pandemic: A first look*. MIT Teaching Systems Lab. <https://tsl.mit.edu/covid19/>.
8. In Jacobson, L. (2020, Mar). Present and accounted for? Coronavirus-related school closures create attendance challenges. *Education Dive*. <https://www.educationdive.com/news/present-and-accounted-for-closures-create-attendance-challenges/574412/>.



LAUNCH NEBRASKA

www.launchne.com





NEBRASKA

DEPARTMENT OF EDUCATION

May 29, 2020

To: Nebraska Public School Superintendents, Non-Public School Administrators, and ESU Administrators
CC: State Board of Education, Commissioner's Cabinet, and NDE Leadership
Re: Commissioner's Message Regarding Graduation Ceremony Guidance and Interpretation

This document provides general guidance for school districts wishing to hold graduation ceremonies during the continuing threat of the coronavirus and should not be interpreted as a diminution of the threat of the virus. Failure to adhere to appropriate safeguards during the conduct of such graduation services could result in the continued spread of the virus.

The current and statewide Directed Health Measure (DHM) Order 2020-011 addresses both "gatherings" and "school activities" and the following are excerpts from that DHM Order. However, the Governor has issued an outline of changes that will update the Directed Health Measures allowing graduations to happen under the "Gatherings" portion of the DHM expected to change for most of the state on June 1.

The Nebraska Department of Education (NDE) is focused on following the guidance of public health experts when making decisions about the reopening of facilities and resumption of activities statewide. Restrictions may be gradually reduced, allowing greater flexibility, including in the operation of summer programming in schools. However, if in Nebraska as a whole, or within identified jurisdictions, disease rapidly increases, additional restrictions may need to be reinstated.

"Gatherings" under Phase II:

(Starting June 1, 2020 - All counties except Hall, Merrick, Hamilton and Dakota)

A gathering is defined as any event or convening that brings together more than ten (10) patrons, customers or other invitees, excluding staff, in a single room or single space at the same time, including but not limited to, pre-schools, daycare facility (including in-home facilities), gymnasium, fitness center, auditorium, stadium, arena, large event conference room, meeting hall, library, or any other confined indoor or outdoor space. This also includes weddings and funerals, as well as parades, fairs, festivals, concerts, auto racing, and other indoor and outdoor events.

(From [DHM Phase II](#))

- *Gatherings will be limited to the greater of 25 people (excluding staff) or 25% of rated occupancy (not to exceed 3,000) for gatherings held at:*
 - *Indoor or Outdoor Arenas, Indoor or Outdoor Auctions, Stadiums, Tracks, Fairgrounds, Festivals, Zoos, Auditoriums, Large Event Conference Rooms, Meeting Halls, Indoor Theaters, Libraries, Swimming Pools, or any other confined indoor or outdoor space.*
 - *Groups shall be no larger than six (6) individuals.*
 - *Six (6) feet separation between groups must be maintained.*
- *Parades, carnivals, midways, dances and street dances, and beer gardens are prohibited through June 30th and may be extended.*
- *Parades where patrons remain in their vehicles and the public does not line the streets are permitted.*
- *Dance recitals are permitted but must follow the Gathering requirements.*
- *Drive-in movie theaters may open at full capacity as long as patrons remain in/on their vehicles while viewing the movie and congregating at concession and restroom areas are not permitted.*
- *Plans for reopening must be submitted to the local health departments and approved for all indoor and outdoor locations/venues that hold 500 or more individuals (1,000 or more in counties over 500,000 population) before reopening is permitted. The reopening plan must contain planned number of guests, how the location will meet social distancing guidelines, and sanitation guidelines.*

DHM Related to Schools (Expires on June 1, 2020):

1. All schools; public, private and parochial: are hereby ordered to cease all in person instruction, and all extra-curricular activities except for: remote learning, child care services, meal distribution, distribution of educational materials and supplies, general building or physical plant operations and maintenance, and residential services may be continued as needed or necessary.
2. Schools are defined as public, private, and parochial elementary and secondary schools.

Six Rules:

The Governor has also emphasized six rules to keep Nebraska healthy:

1. Stay home. No non-essential errands and no social gatherings. Respect the ten-person limit.
2. Socially distance your work. Work from home or use the six-foot rule as much as possible in the workplace.
3. Shop alone and only shop once a week. Do not take family with you.
4. Help kids follow social distancing. Play at home. No group sports. And no playgrounds.
5. Help [senior citizens] stay at home by shopping for them. Do not visit long-term care facilities.
6. Exercise daily at home or with an appropriately socially-distanced activity.

Commissioner’s Interpretation and Guidance for Graduation for the Class of 2020 on or after June 1:

As such I make the following recommendation to school officials that is supported by Nebraska’s public health officials:

- The Directed Health Measure (DHM) limits apply to all types of graduation ceremonies.
- Graduation ceremonies are permissible in counties following the DHM “Gatherings” protocols for Phase II.
- All in-person graduation ceremonies and celebrations must meet the current, appropriate Directed Health Measure or should be postponed until such a time that the statewide order is lifted and when subsequent orders would clearly permit such gatherings.
- Every effort should be made to properly communicate the actions that minimize the spread of the virus during school events and for community health afterward as well. Schools should notify the public of precautions associated with private post-graduation gatherings or celebrations.

Further Considerations:

- School leaders are responsible for the safety of those who attend school-sponsored graduation ceremonies and must limit physical participation on the premises to adhere to the DHM.
- School districts may reach the decision to hold in-person graduation ceremonies after careful consideration and planning by the appropriate school personnel. Plans should be clearly communicated to the local Board of Education.

Graduation Planning Guidance:

- Provide for appropriate social distancing of both graduates and attendees.
- Provide for appropriate social distancing of both graduates and parties of guests arriving, during, and leaving the ceremony.
 - Mark standing locations of graduates waiting in line.
 - Parties of guests should be seated together at the graduation ceremony, but should maintain six feet of social distance from other parties.
 - Consider one-way direction of movements and use separate entrance and exits.
- A statement of personal responsibility to encourage those who are sick or at risk to stay home. This includes:
 - The elderly
 - People with underlying medical conditions
 - Family members who live with elderly people or those who are at risk
 - People who have access to those at risk in nursing institutions
 - People who have upper respiratory or flu-like symptoms
 - People who live with someone with upper respiratory or flu-like symptoms

- People with COVID-19 or live with someone with COVID-19
 - People who have been exposed to someone with COVID-19
- Seating, doors, restrooms, common areas, etc. should be sanitized using CDC recommended cleaning/sanitizing practices before and after the graduation ceremony.
- Fellowship, social gatherings, or other functions before or after the ceremony on the premises of the school should not be permitted as such gatherings could expose those present to the virus.
- It is essential for the safety of those attending the graduation that their arrival and departure be managed in such a way as to prevent interaction between parties. Appropriate steps should be taken to dismiss and pace the departure of those present at the conclusion of the ceremony so as to prevent the interaction between parties as distances less than six feet.
- School districts should discourage large graduation parties in their communities.
- Schools should communicate graduation ceremony procedures and directions to all graduates and their families in advance of the ceremony.

I join you in the critical need to recognize students and families who have much to celebrate. I also ask you to join me in celebrating in the safest manner possible and generally promote protocols that allow Nebraskans to keep healthy.

Matthew L. Blomstedt, Ph.D.

Commissioner of Education

6/8/2020						
TRANSFERS WITHIN THE DISTRICT						
Last Name	First Name	Transferring School Year	Date Transfer Requested	Grade Entering	SCS Resident School Building	SCS Transferring to Building
OPTIONS OUT / IN	First Name	Option School Year	Date Transfer Requested	Grade Entering	Resident District	Option district
Niles	Abigail	2020/2021	4/16/2020	K	SCS/	Columbus Public
Sulley	Jailyn	2020/2021	5/6/2020	9	SCS/RICHLAND	Howells.
CANCELED OPTIONS:						
Last Name	First Name	Option School Year	Date canceled		Resident District	Option district
Slonecker	Trista Lyn	2008/2009	5/16/2020	grad	SCS	David City
Denker	Clayton J	2015/2016	5/16/2020	grad	SCS	David City
Paseka	Riley J	2010-2011	5/16/2020	grad	SCS	David City

