

Board of Education Work Session

October 26, 2015 7:00 PM

Board Room, Central Services Building
765 Main St
Springfield, NE 68059

Agenda

- I. Meeting Roll Call
- II. Notice of Open Meetings Act - Posted
- III. Public Comment
- IV. Items for Discussion (Discussion Only)
 - IV.A. Westmont Construction Project Discussion
 - IV.B. Learning Community Common Levy and School District Boundaries
Information Night Planning
 - IV.C. Voluntary Separation Plan for 2015-16
- V. Action Items
 - V.A. Board Letter to NSAA Classification Committee
 - V.B. New substitute pay rates for district
 - V.C. Springfield Land Purchase Offer
- VI. Future Planning
- VII. Executive Session
 - VII.A. Superintendent Evaluation
- VIII. Adjourn



October 26, 2015

Dear NSAA Classification Committee and NSAA Board of Director's,

The Board of Education for Springfield Platteview Community Schools is submitting this letter to express our concern with the current NSAA classification system and how it relates to our district being a part of Class B. We are very supportive of a thorough review of the existing method and philosophy used to classify schools. The forming of a study committee is a commendable first step.

The NSAA constitution and bylaws lay out ideals for fair competition. It speaks to the issue of equity and the health and physical welfare of all participants, which include our student-athletes.

We believe the current classification system, especially in Class B, no longer serves those ideals. The disparity between the largest and the smallest high school in Class B is three and a half times in enrollment. This creates an issue, especially in football, for smaller Class B schools to compete and could jeopardize the health and welfare of our student-athletes. Our district had been placed in Class C-1 for two years in 2010-11 and 2011-12. We had good success in football by making the state quarterfinals in 10-11 and finished state runner-up in 11-12. During these two years, the number of students who went out for football significantly increased. Since moving back up to Class B in 2012-13, the number of students who play football at Platteview High School has steadily decreased and we are now down to 28 players playing in grades 10-12. Our high school has won only two football games in that two year time span. Many of our games have gone to a running clock in the second half because of the discrepancy in score.

The disparity in the number of players and the size of players from the opposing teams have had a detrimental effect on our football program. A lot of our students have decided not to participate in football because of having to play larger Class B schools. The fear from students and parents is possible injury. Parents are upset the larger Class B schools are on our schedule. There have been a few times this season where we did not know if we'd be able to finish a football game because of injuries and being forced to play freshman against varsity players. Examine the ratings for football each of the past five years, and it's mostly the same high schools at or near the top. These are mostly the larger Class B high schools in the top 10.

Instead of trying to fit high schools into a box for classification, it would make sense to come up with equitable guidelines for schools competing against each other based on enrollment. Our student-athletes should not be used as an easy win or a balance in scheduling for larger schools.

We believe this is an important issue in our community, high school, and athletic program. We recognize the undertaking in trying to find equity across the state with the many variables that exist in trying to classify schools. However, we are confident the study committee and the NSAA Board of Director's can bring forward alternatives and recommendations for change that will be in the best interest of student-athlete's health, welfare, and fairness in competition across the state. How the NSAA decides to proceed with classification changes is an important decision with the needs of our student-athletes at stake.

Thank you for your consideration.

Sincerely,

Lori Bartels
Board President

Brian Wichman
Board Vice President

Brenda Sherman
Board Treasurer

Bob Icenogle
Board Member

Jennifer Kreifels
Board Member

Brian Osborn
Board Member

| School | 2014-15 | | 2015-16 | | | |
|---|----------|-----------|----------|-----------|---------|------------|
| | Daily | Long-Term | Daily | Long-Term | Kick-in | Notes |
| Bellevue* | \$135.00 | \$145.00 | \$135.00 | \$145.00 | 10 days | No changes |
| Bennington | \$135.00 | \$145.00 | \$135.00 | \$145.00 | 10 days | No Change |
| Blair* | \$135.00 | \$176.47 | \$135.00 | \$177.67 | 10 days | No Change |
| Elkhorn | \$135.00 | \$145.00 | \$135.00 | \$145.00 | 10 days | No Change |
| Fremont* | \$130.00 | \$175.97 | \$130.00 | \$178.76 | 10 days | No Change |
| Gretna | \$135.00 | \$145.00 | \$135.00 | \$145.00 | 10 days | No changes |
| Millard | \$140.00 | \$150.00 | \$140.00 | \$150.00 | 15 days | No changes |
| OPS | \$140.00 | \$145.00 | \$150.00 | \$160.00 | 10 days | Proposed a |
| Papio LV | \$135.00 | \$145.00 | \$135.00 | \$145.00 | 15 days | No Change |
| Plattsmouth* | \$130.00 | \$140.00 | \$130.00 | \$140.00 | 10 days | No changes |
| Ralston* | \$140.00 | \$150.00 | \$140.00 | \$150.00 | 10 days | No changes |
| Westside | \$140.00 | \$150.00 | \$140.00 | \$150.00 | 10 days | No Change |
| Arlington | \$130.00 | \$140.00 | \$135.00 | \$145.00 | 10 days | Proposed a |
| Ashland | \$135.00 | \$155.00 | \$140.00 | \$155.00 | 10 days | Proposed a |
| DC West | \$130.00 | \$145.00 | \$130.00 | \$145.00 | 10 days | No changes |
| Fort Calhoun | \$100.00 | \$125.00 | \$100.00 | \$135.00 | 10 days | Added \$10 |
| Springfield* | \$115.00 | \$175.27 | \$115.00 | \$177.28 | 10 days | No Change |
| | | | | | | |
| Average | \$131.76 | \$150.16 | \$132.94 | \$152.28 | | |
| | | | | | | |
| Number of Substitute Days in 2014-15 = appx. 1,317.5 | | | | | | |
| Bellevue: \$140 after 25 days of total subbing for year and 91st day of continuous work for one position will be placed appropriately on salary | | | | | | |
| Blair: Long-term is dependent on base/contracted days (Base = \$33,225/187) | | | | | | |
| Fremont: Long-term is dependent on base/contracted days (Base = \$33,071/185) | | | | | | |
| Plattsmouth - Beginning with the 11th day \$140 for next 20 consecutive days. Beginning with the 31st consecutive day, it is \$160 per day. | | | | | | |
| Ralston - Long Term: two step - 11th day it goes to \$150, 31st day it goes to \$155 | | | | | | |
| Springfield: Long-term is dependent on base/contracted days (Base = \$32,975/186) | | | | | | |

Springfield Pines Subdivision- Engineers opinion of costs for site improvement; Lot area 9.99 acres

| ITEM | DESCRIPTION | QUANTITY | UNIT | UNIT PRICE | TOTAL | NOTES |
|------|--|----------|----------|-------------|--------------|---|
| 1 | RAW LAND PRICE | 9.99 | acre | \$30,000.00 | \$299,700.00 | Developer paid \$25-\$26K |
| 2 | DESIGN FEES | 1 | redesign | \$10,000.00 | \$10,000.00 | Cost for redesign of development with school |
| 3 | STRIP AND RESPREAD | 11,000 | C.Y. | \$1.20 | \$13,200.00 | |
| 4 | EARTHWORK EXCAVATION | 65,000 | C.Y. | \$1.45 | \$94,250.00 | |
| 5 | SEDIMENT BASIN | 1 | L.S. | \$5,000.00 | \$5,000.00 | |
| 6 | EROSION CONTROL | 1 | L.S. | \$10,000.00 | \$10,000.00 | |
| 7 | EROSION CONTROL MAINTENANCE | 9.99 | acre | \$1,500.00 | \$14,985.00 | |
| 8 | WATER DISTRIBUTION | 295 | L.F. | \$72.00 | \$21,240.00 | |
| 9 | PAVING | 875 | S.Y. | \$30.00 | \$26,250.00 | |
| 10 | STORM SEWER | 1 | L.S. | \$16,400.00 | \$16,400.00 | |
| 11 | STORM SEWER RETENTION BASIN | 0.08 | L.S. | \$10,000.00 | \$800.00 | |
| 12 | CAPITAL FACILITY FEES | | | | | will negotiate with City and pay City directly and access from Main St. |
| 13 | SANITARY SEWER | | | | | will negotiate with City and pay City directly and access from Main St. |
| | | | | TOTAL | \$511,825.00 | |
| | NOTES: | | | | | |
| 1 | Proposed land is \$5,000 more an acre than what was paid by developer | | | | | |
| 2 | Earthwork is typically grading amount for school site with average cut of 4' over the 9.99 acres | | | | | |
| 3 | School site is served by existing sewer line on Main St. ROW- no need to use SID sewer system | | | | | |
| 4 | Storm sewer estimate attached on back | | | | | |
| 5 | School will pay Capital Facility Fees directly to water supplier | | | | | |

Springfield - Platteview Elementary School
Springfield Pines Subdivision
Engineers Opinion of Costs for Storm Sewer System Serving School Site
Legal Description - Lot 1 Springfield Pines
Lot Area: 9.99 Acres

| ITEM | DESCRIPTION | QUANTITY | UNIT | UNIT PRICE | TOTAL |
|------|-------------------|----------|------|------------|-------------|
| 1 | 15" RC Storm Pipe | 60.00 | L.F. | \$20.00 | \$1,200.00 |
| 2 | 18" RC Storm Pipe | 90.00 | L.F. | \$25.00 | \$2,250.00 |
| 3 | 24" RC Storm Pipe | 410.00 | L.F. | \$35.00 | \$14,350.00 |
| 4 | Curb Inlet | 3.00 | EACH | \$3,500.00 | \$10,500.00 |
| 5 | 24" FES | 1.00 | EACH | \$1,500.00 | \$1,500.00 |
| 6 | Manhole | 10.00 | V.F. | \$300.00 | \$3,000.00 |
| | TOTAL | | | | \$32,800.00 |
| | School Share | 50.00% | | | \$16,400.00 |

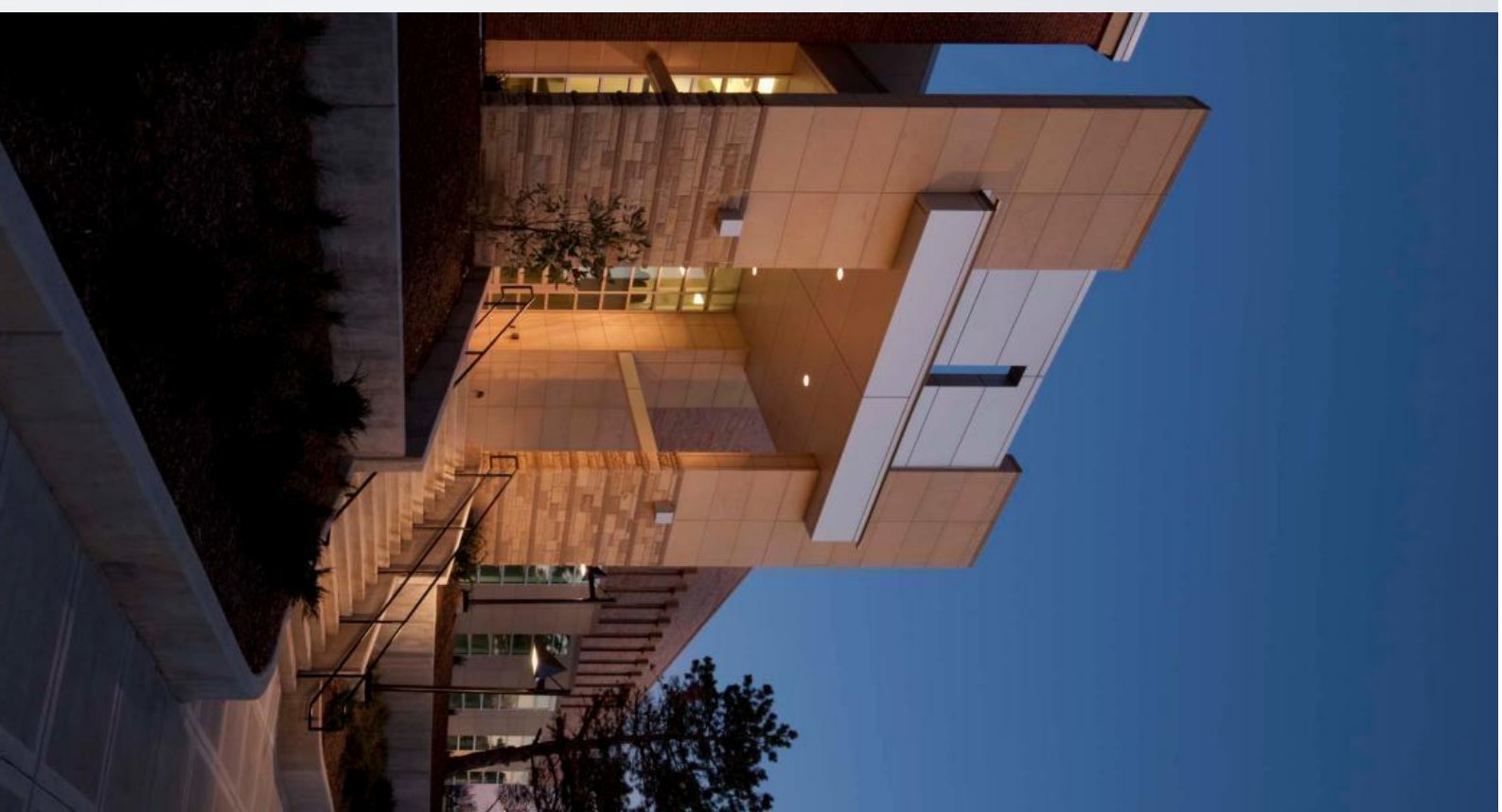


**Elementary Facility Options
School Board Update**

Agenda

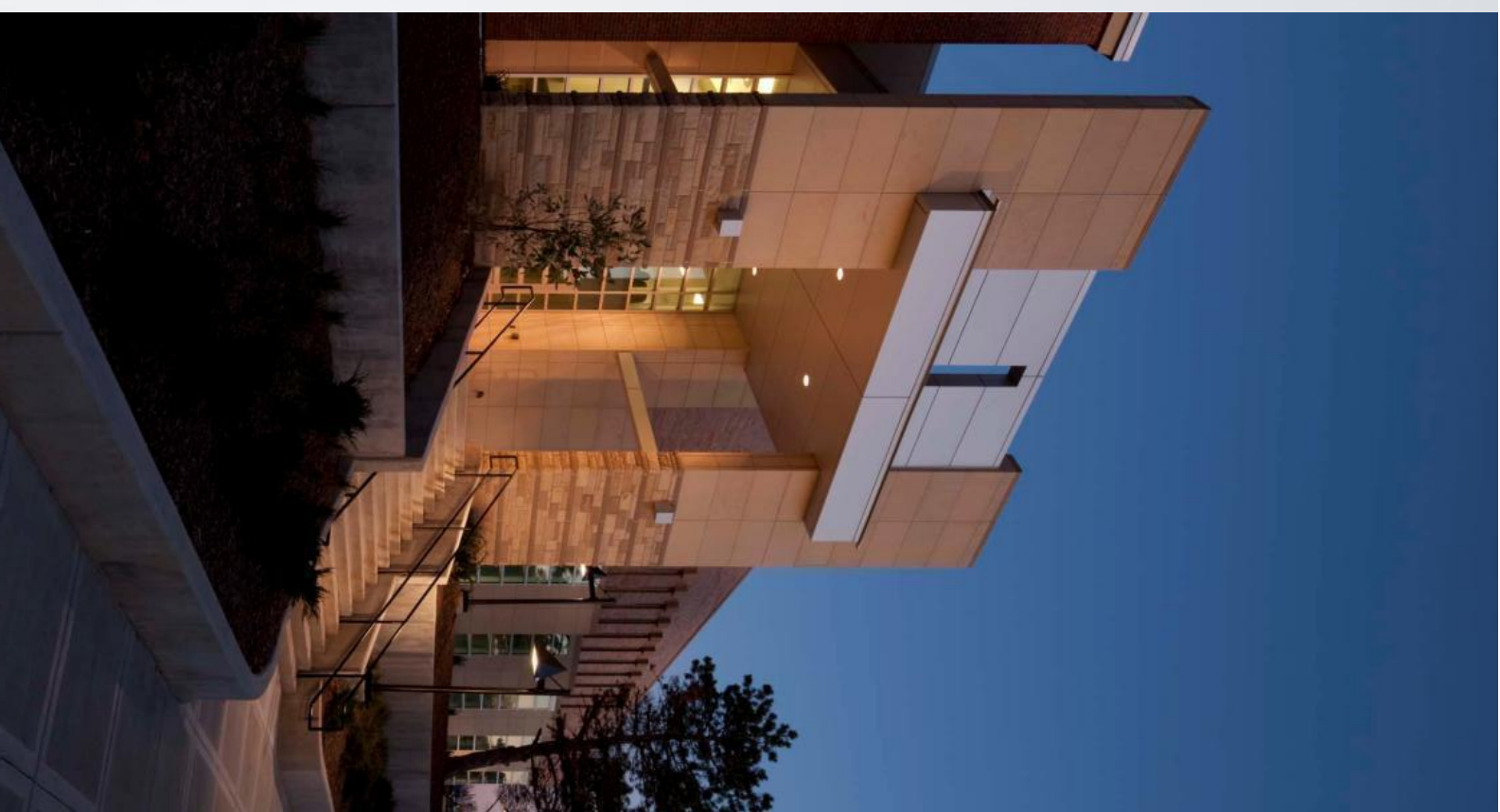
Review of Solution Options

- Review Elementary School Program Requirements
- Review Conceptual Cost Estimating Process
- Review Three Elementary School Options
- Review Cost of Options
- Discussion & Feedback



Elementary School Program Requirements

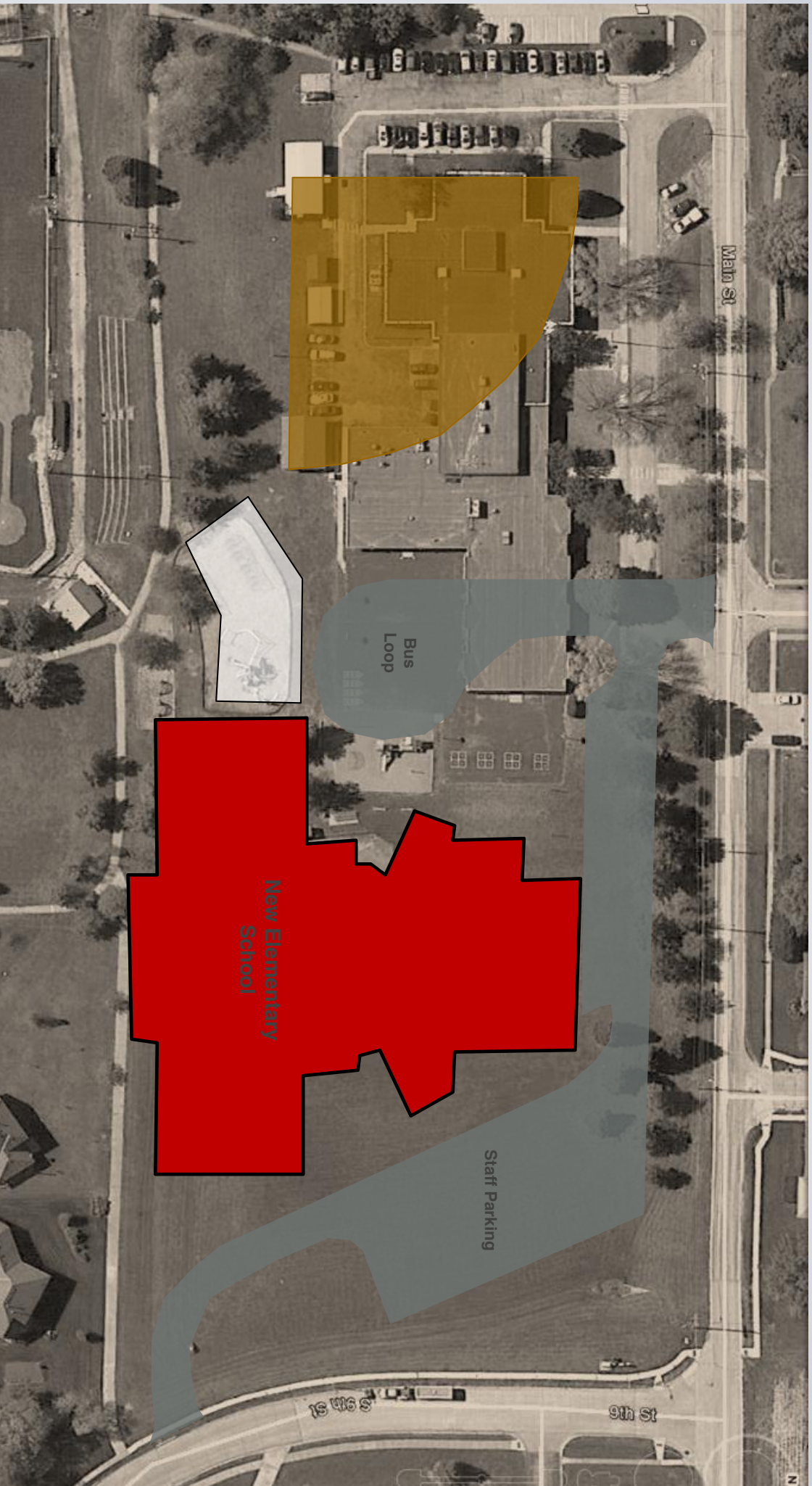
- All three options have equal programs requirements
- Grades PK-6, One PK + Three sections per K-6 grade
- Required SPED classrooms
- Shared Cafeteria / Gymnasium
- Storm shelter space included
- Geothermal heat pump system included
- Separate parent & bus loop drives





S. 132nd Street

SPRINGFIELD PLATTEVIEW SCHOOL DISTRICT
Springfield Elementary School – Concept Site Plan



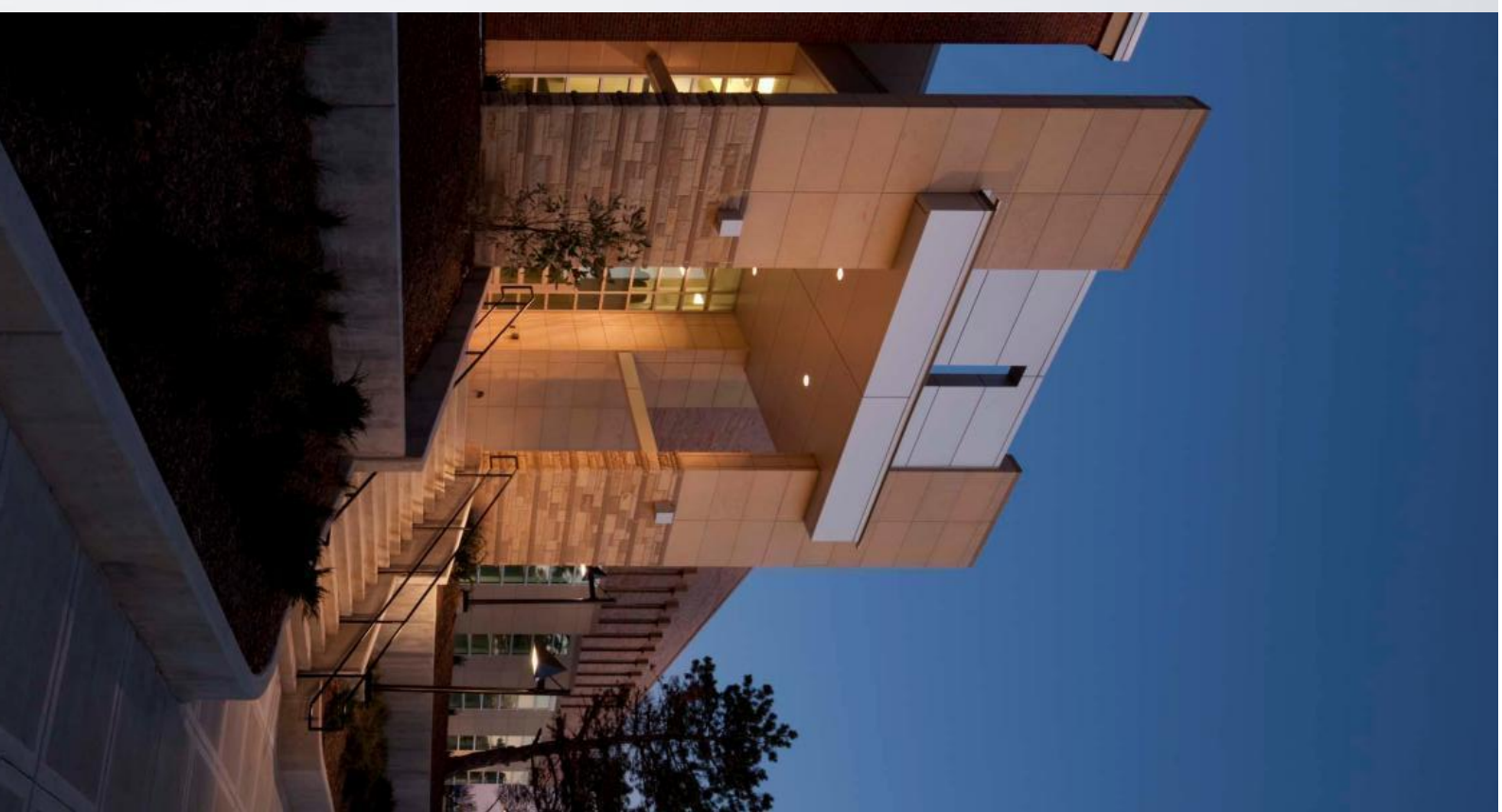
SPRINGFIELD PLATTEVIEW SCHOOL DISTRICT
Springfield Elementary School – Concept Site Plan (Existing Site)



SPRINGFIELD PLATTEVIEW SCHOOL DISTRICT Springfield Elementary School Addition & Renovation – Concept Site Plan

Conceptual Cost Consideration Issues

- Cost of renovation based on due diligence to evaluate condition of existing facility, along with input from district facility staff.
- Cost of Site Development is based upon due diligence of costs for project of similar size and scope.
- New construction costs are based upon historical construction cost data, with appropriate market escalation and inflation factors applied.
- Cost are assumed to be open, competitive public bids and would include required bid, material and performance bonding for the work as required by state statute.
- A/E fees are appropriately scaled according to project size and scope.
- Costs do not include Construction Management Fees / Costs
- Costs do not include cost for moveable furniture, computer hardware or software.
- Cost are presented as Total Project Cost and include site development allowances, renovation costs, new construction costs, A/E fees, appropriate contingencies, cost of financing and other miscellaneous expenses



New Site in Springfield Pines Development

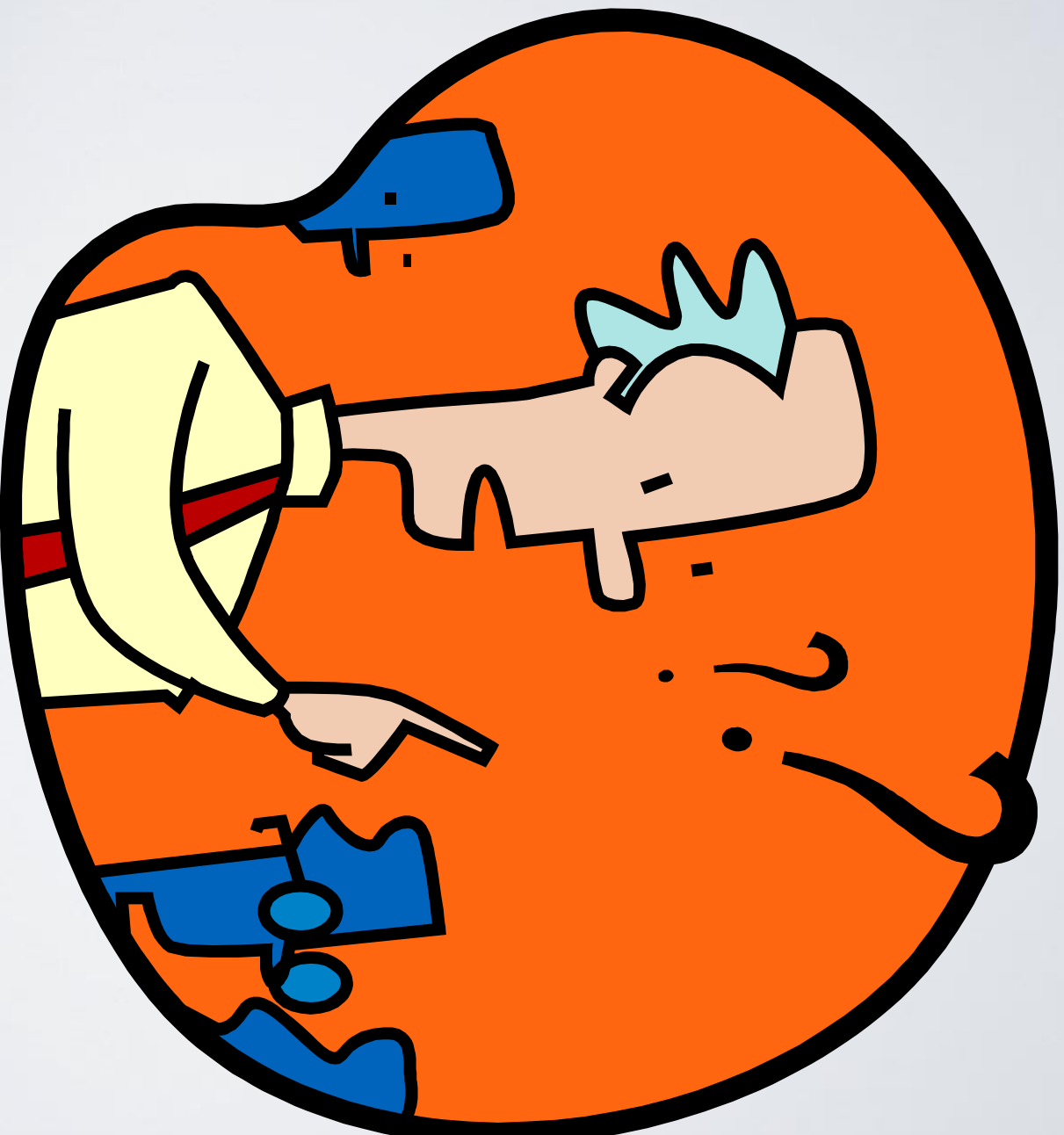
| | | | | |
|--|--|-----------|--------------|---------------------|
| Additions and New Construction Cost | | 65,932 SF | | \$13,019,460 |
| On-Site Development | | | \$1,411,303 | \$1,411,303 |
| Off-Site Development | | | \$0 | \$0 |
| Elementary School | | 65,932 SF | \$158 SF | \$10,417,236 |
| Equipment | | | | \$275,000 |
| Fixed Equipment | | | | \$0 |
| Furniture, Furnishings & Equipment (Movable) | | | | \$263,728 |
| Technology and Technology Equipment | | | | \$296,693 |
| Geothermal Well Field (included in Construction cost) | | 65,932 SF | \$ | \$296,693 |
| Support Buildings (Storage, Concessions, Restrooms, Press Boxes, etc...) | | SF | \$0 | \$0 |
| Storm Shelter Construction Premium | | | 500 # people | \$355,500 |
| Construction Management Fees | | | LS | \$0 |
| | | | - | \$0 |
| COST OF THE WORK | | | | \$13,019,460 |
| Architect / Engineering Fees | | | | \$846,265 |
| Renovation and Remodeling Cost | | | | \$0 |
| Additions and New Construction Cost | | | 6.25% | \$813,716 |
| Specialty Consultants (i.e. Food Service, Acoustical, Theatrical, Etc.) | | | 0.25% | \$32,549 |
| Multiple Bid Packages Additional Services | | | 0.00% | \$0 |
| Enhanced Construction Phase Services | | | 0.00% | \$0 |
| Site Acquisition & Development Cost | | | | \$511,825 |
| Site Acquisition | | | \$299,700 LS | \$299,700 |
| Platting Cost | | | \$0 LS | \$0 |
| Traffic Impact Study | | | \$0 LS | \$0 |
| Off-Site Street and Utilities Development (Performed by Developer) | | | \$212,125 SF | \$212,125 |
| General and Jurisdictional Expenses | | | | \$226,206 |
| Printing (Allowance) | | | 0.4% | \$52,078 |
| Reimbursable Expenses (Allowance) | | | 0.12% | \$14,972 |
| Topographic Survey (3rd Party) | | | 0.08% | \$9,765 |
| Pre-Construction Geo-Technical Soils Testing (3rd Party) | | | 0.10% | \$13,019 |
| Geothermal Test Well (Ground Source Conductivity Test) | | | \$10,000 LS | \$10,000 |
| Special Inspections (3rd Party) | | | 0.50% | \$65,097 |
| Construction Soils Testing (3rd Party) | | | 0.13% | \$16,274 |
| NPDES Permit Preparation and Coordination | | | \$4,000 LS | \$4,000 |
| Storm Water Pollution Prevention Plan (SWPPP) | | | \$4,000 LS | \$4,000 |
| Erosion Control Monitoring (SWPPP) (3rd Party) | | | \$12,000 LS | \$12,000 |
| Wetland Delineation | | | | \$0 |
| Builders Risk Insurance | | | 0.0% | \$0 |
| Contractor Proposal Evaluations (Allowance) | | | | \$0 |
| Utility Company Fees | | | | \$0 |
| Sewer | | | | \$0 |
| City Interceptor Sewer Fee | | | | \$0 |
| Water Pioneer Main | | | | \$0 |
| Gas | | | | \$0 |
| Electric | | | | \$0 |
| Estimated Electric Utility Company Rebate | | | | \$0 |
| Building Permit Fee | | | \$25,000 LS | \$25,000 |
| LEED Registration Fee | | | | \$0 |
| LEED Documentation Fee | | | 0.0% | \$0 |
| Building Commissioning Fee | | | 0.00% | \$0 |
| Mechanical Life Cycle Cost Analysis | | | LS | \$0 |
| PROJECT EXPENDITURE SUBTOTAL | | | | \$14,603,756 |
| Design Contingency | | | 3.00% | \$390,564 |
| Construction Contingency | | | 2.00% | \$260,389 |
| PROJECT BUDGET Including contingency | | | | \$15,254,729 |
| Project Escalation Factor | | | 4.00% | \$610,189 |
| TOTAL PROJECT ESCALATED BUDGET | | | | \$15,864,918 |
| Fiscal Consultant Fees | | | 1.3% | \$206,244 |
| Capitalized Interest | | | 0.0% | \$0 |
| TOTAL ESTIMATED PROJECT BUDGET | | | | \$16,071,162 |

Existing Site East of Springfield Elementary

| | | | | |
|--|--|-----------|--------------|---------------------|
| Additions and New Construction Cost | | 66,591 SF | | \$13,181,639 |
| On-Site Development (Includes Existing Building Demolition) | | | \$1,463,705 | \$1,463,705 |
| Off-Site Development | | | \$0 | \$0 |
| Elementary School | | 66,591 SF | \$158 SF | \$10,521,409 |
| Equipment | | | | \$275,000 |
| Fixed Equipment | | | | \$0 |
| Furniture, Furnishings & Equipment (Movable) | | | | \$266,365 |
| Technology and Technology Equipment | | | | \$299,660 |
| Geothermal Well Field (Included in Construction cost) | | 66,591 SF | \$ 299,660 | \$0 |
| Support Buildings (Storage, Concessions, Restrooms, Press Boxes, etc...) | | SF | \$0 | \$0 |
| Storm Shelter Construction Premium | | | 500 # people | \$355,500 |
| Construction Management Fees | | | LS | \$0 |
| | | | - | \$0 |
| COST OF THE WORK | | | | \$13,181,639 |
| Architect / Engineering Fees | | | | \$856,807 |
| Renovation and Remodeling Cost | | | | \$0 |
| Additions and New Construction Cost | | | | \$823,852 |
| Specialty Consultants (i.e. Food Service, Acoustical, Theatrical, Etc.) | | | | \$32,954 |
| Multiple Bid Packages Additional Services | | | | \$0 |
| Enhanced Construction Phase Services | | | | \$0 |
| Site Acquisition & Development Cost | | | | \$0 |
| Site Acquisition | | | | \$0 LS |
| Platting Cost | | | | \$0 LS |
| Traffic Impact Study | | | | \$0 LS |
| Off-Site Street and Utilities Development | | | | \$0 SF |
| General and Jurisdictional Expenses | | | | \$228,339 |
| Printing (Allowance) | | | | \$52,727 |
| Reimbursable Expenses (Allowance) | | | | \$15,159 |
| Topographic Survey (3rd Party) | | | | \$9,886 |
| Pre-Construction Geo-Technical Soils Testing (3rd Party) | | | | \$13,182 |
| Geothermal Test Well (Ground Source Conductivity Test) | | | | \$10,000 LS |
| Special Inspections (3rd Party) | | | | \$65,908 |
| Construction Soils Testing (3rd Party) | | | | \$16,477 |
| NPDES Permit Preparation and Coordination | | | | \$4,000 LS |
| Storm Water Pollution Prevention Plan (SWPPP) | | | | \$4,000 LS |
| Erosion Control Monitoring (SWPPP) (3rd Party) | | | | \$12,000 LS |
| Wetland Delineation | | | | \$0 |
| Builders Risk Insurance | | | | \$0 |
| Contractor Proposal Evaluations (Allowance) | | | | \$0 |
| Utility Company Fees | | | | \$0 |
| Sewer | | | | \$0 LS |
| City Interceptor Sewer Fee | | | | \$0 LS |
| Water Pioneer Main | | | | \$0 LS |
| Gas | | | | \$0 LS |
| Electric | | | | \$0 LS |
| Estimated Electric Utility Company Rebate | | | | \$25,000 LS |
| Building Permit Fee | | | | \$0 |
| LEED Registration Fee | | | | \$0 |
| LEED Documentation Fee | | | | \$0 |
| Building Commissioning Fee | | | | \$0 |
| Mechanical Life Cycle Cost Analysis | | | | \$0 LS |
| PROJECT EXPENDITURE SUBTOTAL | | | | \$14,266,784 |
| Design Contingency | | | | \$395,449 |
| Construction Contingency | | | | \$263,633 |
| PROJECT BUDGET including contingency | | | | \$14,925,866 |
| Project Escalation Factor | | | | \$597,035 |
| TOTAL PROJECT ESCALATED BUDGET | | | | \$15,522,900 |
| Fiscal Consultant Fees | | | | \$201,798 |
| Capitalized Interest | | | | \$0 |
| TOTAL ESTIMATED PROJECT BUDGET | | | | \$15,724,698 |

Questions and Discussion

FACILITY AUDIT & MASTER PLAN STUDY





14801 South 108th St.
Springfield, NE 68059
Phone: 402-592-1300
Fax: 402-597-8551

Future Planning October 26, 2015

1. 10/28/15 Site Committee Meeting on Bellevue boundaries 6:30 PM
2. 11/9/15 Board Meeting and L.C. Information Night 7 PM; Policy 5:30;
Finance 6:30 PM
3. 11/11/15 Veteran's Day program 10 AM @PHS
4. 11/13/15 Diane Ravich Breakfast 7:30 AM (Lori B., Brian O.) @UNO
5. 11/18-20/15 NASB State Education Conference- LaVista Conf. Center
6. 11/23/15 Board Work Session 7 PM
7. 12/9/15 NASB Leadership Workshop- La Vista 10 AM-3 PM
8. 12/14/15 Board Meeting 7 PM; Site 6 PM; Finance 6:30 PM
9. 12/21/15 Holiday Tea for Staff- Monday, Dec. 21?