

Board of Education Work Session

February 28, 2022 7:00 PM

Board Room, Central Services Building

14801 S 108 St

Springfield, NE 68059-4925

## **Agenda**

- I. Meeting Roll Call
- II. Notice of Open Meetings Act - Posted
- III. Public Comment
- IV. Action Items
  - IV.A. Resignation of Mr. Ron Alexander Platteview High School Principal
- V. Items for Discussion (Discussion Only)
  - V.A. Platteview High School Principal Hiring Process
  - V.B. Legislative Update- Bromm & Associates
  - V.C. Proposed Washington DC/NYC Trip
  - V.D. 2020-2021 Annual Report
  - V.E. Softball CO-OP Update
  - V.F. Classified and Administration Increases for 2022-23
  - V.G. Pandemic Plan Update- Discussion Only
- VI. Future Planning
- VII. Adjourn

Tuesday, February 15, 2022

Dr. Saunders and SPCS Board of Education Members:

Good afternoon. I am writing to inform you that I will be resigning from my positions of Platteview High School Principal and 7-12 Athletic Director at the conclusion of the 2021-22 school year, at the end of my current contract on June 30, 2022.

Six years ago, Mr. Richards and our Board of Education hired me as the Principal at Platteview High School. I believe our staff, students, and the parent community of PHS have partnered successfully over the past six years. PHS is now viewed in a different light across the metro area than it was when I arrived. We have addressed, and in many ways exceeded, numerous areas of the SPCS Strategic Plan specific to our school. A few of these areas are listed below:

- Significantly increased the number of dual credit offerings, and certified dual credit instructors, available to students at PHS. The total number of dual credit offerings and the number of academic areas represented has expanded.
- Creation of the Trojan Academic Center. Our TAC program and TAC Coordinator have fundamentally changed our approach to struggling students to a more proactive, systematic process.
- Integration of a co-teaching model serving students at all levels and abilities.
- Opening of a College and Career Center to serve students, alumni, and our community.
- The construction of the Trojan Zone which has offered a real-world internship opportunity within our school walls.
- Expansion of our Internship program that now serves a much larger population of students, in an expanded range of career experiences.
- The increase of staff talent and expertise across multiple areas; including the addition of a fourth Social Studies teacher, a TAC Coordinator, a Computer Science instructor, a College & Career Advisor, Strength and Conditioning Coordinator, etc.
- Addition of initiatives to positively impact the future ready skills of students including the tardy kiosks and the ICU program.
- Inclusion of Advisory periods as a part of the daily schedule that provides every student at least one trusted, adult advocate and mentor at PHS.
- Increased opportunities for PHS students in extracurricular activities with the addition of girls' wrestling, swimming & diving, girls' tennis, eSports, and junior high cross country.
- Facility improvements that have advanced the extracurricular opportunities for PHS students including the PHS Stadium project, new south locker rooms, Daktronics video boards in Main Gym, upgrade of City Park Softball complex, etc.
- Curricular additions and expansions to meet the needs of PHS students such as Daktronics digital media courses, Computer Science offerings, Theatre, Material Science, Strength & Conditioning offered all periods (0-8), etc.

As I look to finish my time at PHS, I think back to what one of my mentors shared with me about leadership roles. He offered that every leader is called for a specific purpose within a specific 'season' of opportunity. I agree with this belief, and I am extremely thankful to Dr. Saunders, the PHS staff, our Board of Education, our students, and our community for the support and trust that have been extended to me over the past six years. As my season comes to a close here, it will be time for the next leader(s) of PHS to continue our journey of making PHS exceptional. I will cherish my time in Springfield and at Platteview always. While I am not positive what the future will hold for me, I look forward to the next leg of my journey.

Please let me know how I can assist in the process of filling these roles and/or in the transition period.

Respectfully,

Ron Alexander



## Timeline

1. Feb 16, 2022 Position posted on following sites:  
[Nebraska Education Jobs](#)  
[District Website](#)
2. Feb 20, 2022 Posted posted in Omaha World Herald
3. Mar 1, 2022 PHS In- Person Meetings to Share Wants/ Survey
4. Mar 2, 2022 Applications Due Date
5. Mar 8, 2022 Interviews Held



## Proposed Washington DC/NYC Trip

1. Planning a trip to DC/NY area when school gets out May 2023
2. Specifically targeting Class of 2025 (next year's sophomores); however we will survey the two classes whose trips were canceled to see if any are interested
3. Shae Speth and Kirsten Ehrke to supervise; we will ask for more sponsors if numbers get higher than expected
4. Shae and Kirsten will alert parents this spring to the possibility of the trip, see how much interest there is; and then will start looking at pricing and comparing companies

# 2020-21 ANNUAL REPORT

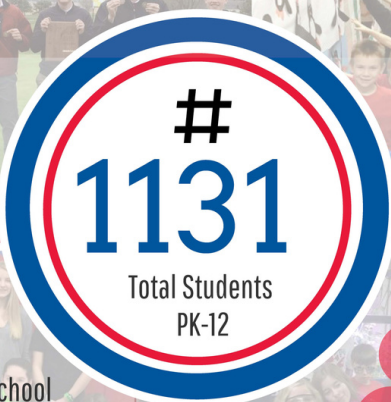


Springfield Platteview Community Schools

# SPCCS



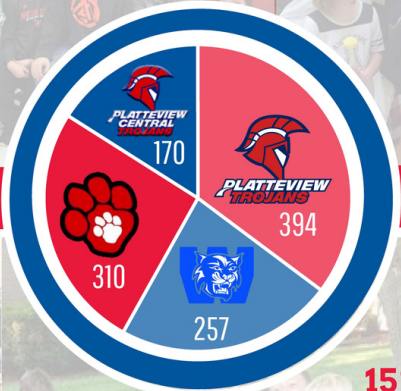
# 2020-2021 District Data Profile



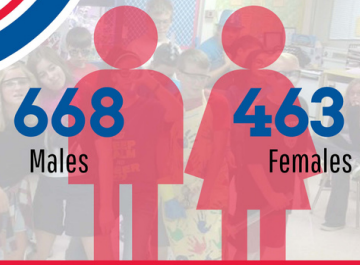
## Enrollment

PreK	- 43	6th	- 77
K	- 69	7th	- 84
1st	- 85	8th	- 86
2nd	- 60	9th	- 103
3rd	- 72	10th	- 95
4th	- 83	11th	- 102
5th	- 78	12th	- 94

Enrollment By School



Enrollment By Gender



## Students

**96%** Graduation Rate  
**96%** Attendance Rate

% Identified



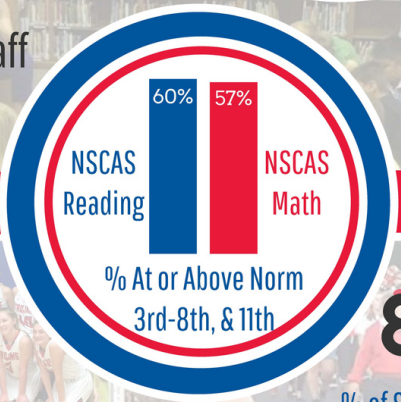
## Staff

# By Role  
Certified Staff: **101**  
Classified Staff: **95**

## Outstanding Educators

Springfield Platteview Teachers with a Masters Degree: **69%**

## District



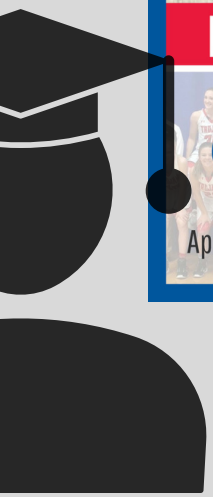
Approx. Square Miles: **92**

% of Students in Extracurriculars: **85%**

Dual Credit Courses Offered: **19**


Average Class Size: **18**

Student Devices K-12th: **1:1**



# DEAR SPRINGFIELD PLATTEVIEW COMMUNITY,

---

The success of our students, teachers, and district is strongly contributed to the support from our patrons, parents and communities who make education a priority. Annually, the district publishes an overview of our progress that includes assessment results, finance, and more. It is an opportunity to highlight the vision and the many successes of our students, teachers, and the district as a whole. Our commitment to providing educational opportunities while operating as efficiently as possible cannot be adequately communicated in a single report. We encourage all stakeholders to review the complete district profile at <https://nep.education.ne.gov//snapshot.html#77-0046-000>. 

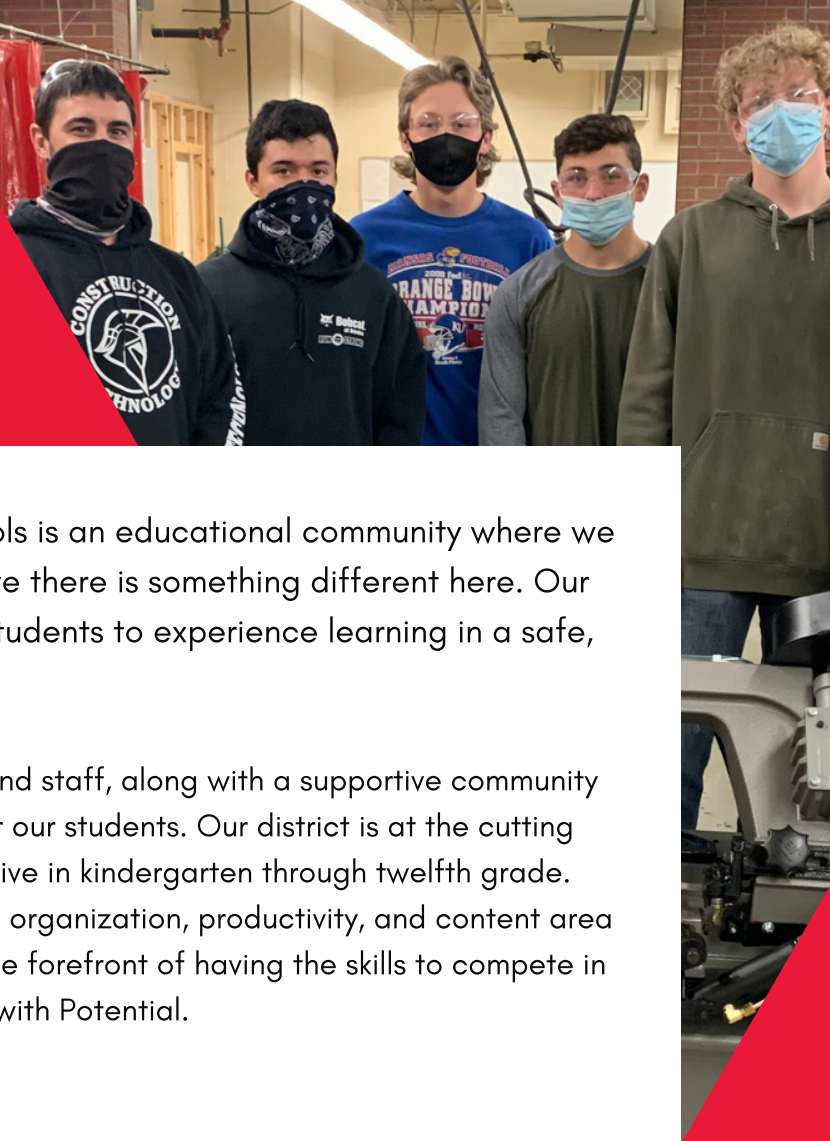


The past few years have been challenging for all of us, but we remain proud of our school-community, the collective work of many to educate our students, and our ability to remain in school for in-person learning all last year. We continue to strive for “Connecting Passion with Potential” Student achievement levels continue to be high. Based on comparative measurements, student achievement in the Springfield Platteview Community Schools continue to meet or exceed state and national levels. Graduation rates are high, exceeding the statewide averages and far exceeding the national averages. Our teaching staff is endorsed at a high level in their subject areas. Our district continues to demonstrate effective and efficient use of district funds in providing a quality educational experience for each student.

Springfield Platteview Community Schools is a special place. We have high expectations for students and employees, and continue to work to develop programs for all students. Our staff continues to rise to the challenges that are faced in education and it is important to note their passion and commitment ensures the success for our students and the district. Thank you to the students, staff, Board of Education, community members, and leadership teams. The commitment of all of us, collectively, will continue to connect passion to potential.



# OUR DISTRICT



Springfield Platteview Community Schools is an educational community where we know and value every student. We believe there is something different here. Our small schools and class sizes allow our students to experience learning in a safe, supportive, and caring environment.

We have an excellent professional faculty and staff, along with a supportive community and group of parents who want the best for our students. Our district is at the cutting edge of technology with a 1-to-1 iPad initiative in kindergarten through twelfth grade. This allows our students every opportunity in organization, productivity, and content area engagement. Our students need to be at the forefront of having the skills to compete in their future careers by Connecting Passion with Potential.

## OUR COMMUNITY

Springfield Platteview Community Schools comprises two pre-schools; two elementary schools, grades K-6; one junior high, grades 7-8; and one high school 9-12. Springfield Platteview Community Schools is approximately 92 sq/mi south of the Omaha metro area. It is located in southern Sarpy County. The district includes the communities of Springfield and many other Sanitary Improvement Districts in south Sarpy County acreages and farmland.

## OUR MISSION

The mission of Springfield Platteview Community Schools is to ensure that all students acquire the college and career ready skills and behaviors necessary for each student to succeed now and into his/her future. Personalized attention and small town values make Springfield Platteview Community Schools a great place to learn and grow. Due to these attributes, we pride ourselves on high achievement scores, graduation rates, and lower discipline issues.

# ENROLLMENT

---

**394**

**PLATTEVIEW  
HIGH  
SCHOOL**

**170**

**PLATTEVIEW  
CENTRAL JR.  
HIGH SCHOOL**

**310**

**SPRINGFIELD  
ELEMENTARY  
SCHOOL**

**257**

**WESTMONT  
ELEMENTARY  
SCHOOL**



**TOTAL** K-12

**1131**

## LOOKING AHEAD

The district and the Board of Education continue to monitor growth and be strategic to have an understanding of the needs and prepare for the future needs at Springfield Platteview Community Schools.

# TAX LEVY RATES

The tax levy is determined by the district's general, bond, building, and quality funds. Springfield Platteview Community Schools remains one of the lowest tax rate in the Omaha Metro area.

As a district, we have always believed that we are the best-kept secret in the metro area. When reviewing the financial data, we know that we are providing our students with a outstanding education while closely monitoring the spending of the district.

The district decreased the tax levy again for 2020-2021. It is expected that the tax levy will continue to be stable or decrease until more residential growth occurs. Since The Learning Community's common levy was removed in the 2017- 2018 school year, the district has been able to use the additional funding to improve facilities and programs.

## AREA SCHOOL DISTRICT TAX LEVY RATES

DC West	0.9491
<b>Springfield Platteview</b>	<b>1.0043</b>
Bellevue	1.0661
Louisville	1.1671
Omaha	1.2048
Millard	1.2201
Plattsmouth	1.2313
Ralston	1.2492
Papillion	1.2906
Westside	1.357
Gretna	1.4159
Elkhorn	1.423
Bennington	1.4298



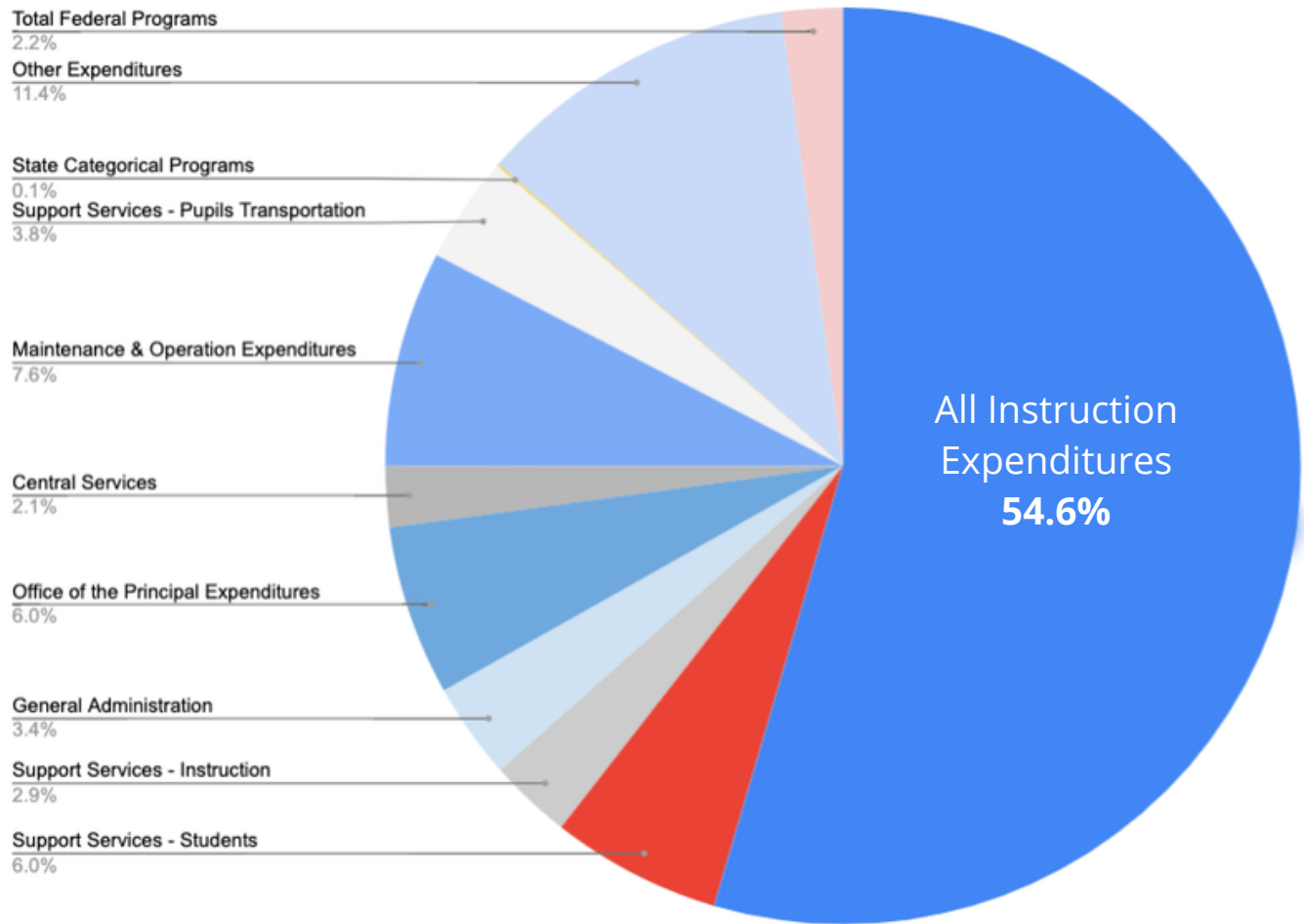
**SPCS RATE**  
**\$1.0043**



# EXPENDITURES

2020-2021

Springfield Platteview Community Schools continues to prioritize student learning.



## DISTRICT REVENUE SUMMARY

Local Receipts	<a href="#"><u>\$16,675,026</u></a>
County Receipts	<a href="#"><u>\$65,988</u></a>
State Receipts other than TEEOSA	<a href="#"><u>\$2,004,138</u></a>
State Aid (TEEOSA)	<a href="#"><u>\$762,265</u></a>
Federal Receipts	<a href="#"><u>\$418,333</u></a>
Total Other Financing Sources	<a href="#"><u>\$23,190</u></a>
<b>Total Receipts</b>	<b><a href="#"><u>\$19,948,940</u></a></b>

*\*Expenditure information is the most recent available for district reporting from the Nebraska Department of Education (NDE).*

# AQUESTT



Educator Effectiveness



Educational Opportunities & Access



Leadership



Postsecondary, Career, and Civic Readiness



Positive Partnerships, Relationships, and Success



Student Achievement and Growth



Transitions

AQESTT, the Accountability Education System Today and Tomorrow is used to rate public schools in Nebraska. The state has gone beyond measuring against standard requirements to create a next-generation accountability system that supports and rewards continuous improvement for every student, school, and educator.

The result is an innovative approach that views each student holistically, classified all schools into four performance levels. Using this system, districts across the state are classified as Excellent, Great, Good or Needs Improvement.

The information is broken into three domains that then are broken up to different tenants. In the future, the district may rework their school improvement process to reflect each tenant.

The 2020-2021 classification and designation of schools and districts are based on 2018-19 school year data. Typically, the annual report includes information in regards to assessment data. As a district, we continue to work for the highest classification and are proud of how each school was classified.

## THE FOLLOWING IS EACH BUILDING'S CLASSIFICATION:



**GREAT**



**EXCELLENT**



**GREAT**



**EXCELLENT**

# SCHOOL IMPROVEMENT PROCESS SUMMARY

# SIP

A set of goals were recommended and approved by the Springfield Platteview Community Schools Board of Education.

## GOAL 1

SPCS will consistently offer comprehensive academic pathways leading to college and career opportunities for all students.

## GOAL 2

SPCS will provide the facilities and staffing needed to keep up with growth and be competitive with other metro area schools in curricular and activities programs.

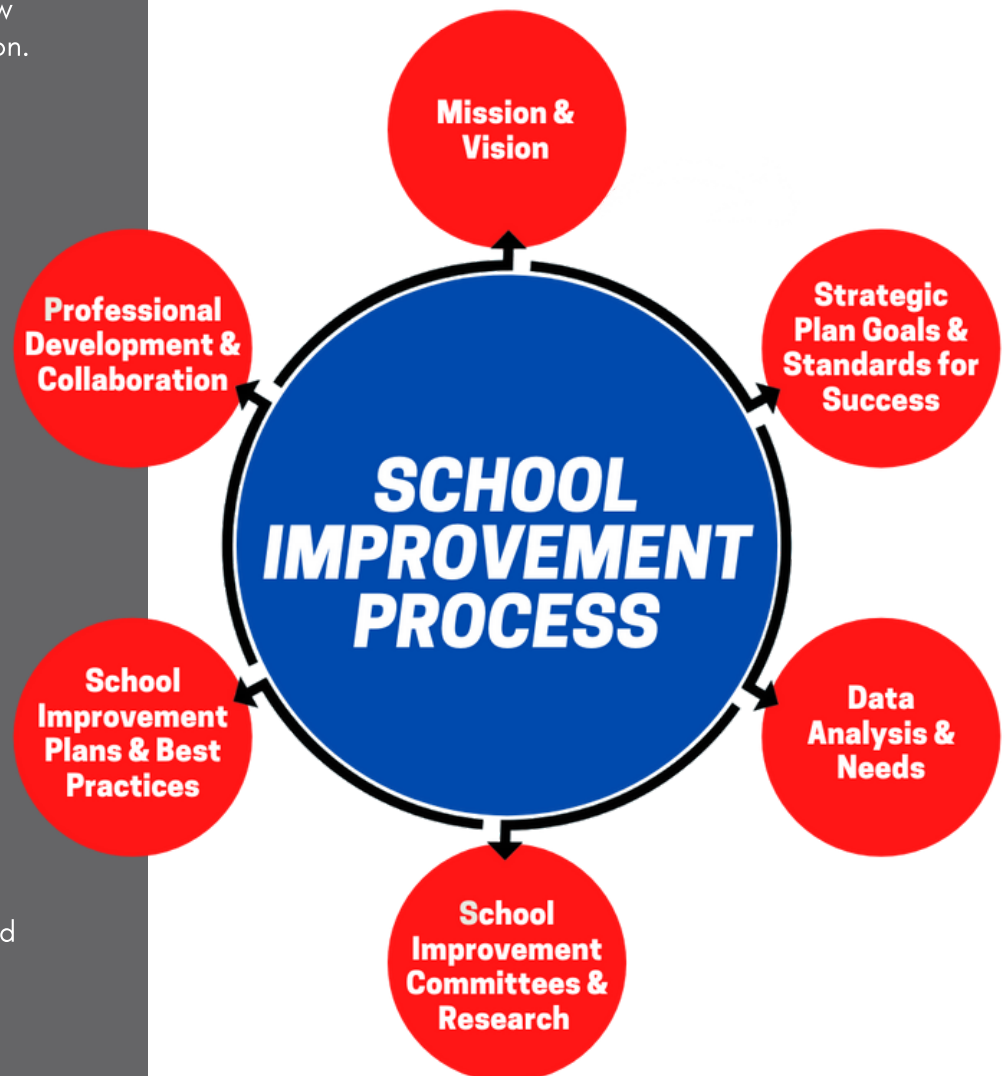
## GOAL 3

SPCS will maintain an Alumni and Friends Society to build outreach with alumni and friends of the district to increase communication, build relationships, coordinate activities, and enhance fundraising to support students, staff, and programs in the district.

The Framework focuses on four key areas: learning and teaching; leading and managing; the student environment; and community involvement.

The School Improvement Framework describes a cycle of school review. It engages many educational and community stakeholders in the process for growth and improvement.

Springfield Platteview Community Schools and the Board of Education believe in a strong plan to help guide the future of our district. Our strategic plan continues to help put us in a position to continue to have high student achievement and allow our students to have an edge over their peers heading for college or their careers.



# BOARD OF EDUCATION

---

The Board of Education believes in quality education that only a smaller district can provide. The Board has been an instrumental part of strategic planning that has brought the district great results with high student achievement scores on state and national assessments while allowing every opportunity for each student, whether they are college or career-oriented.

The Springfield Platteview Community Schools Board of Education oversees the management of the district schools and is the policy-making body. The board has overall responsibility for the curriculum, school taxes, budget, employment of the superintendent and other professional staff, and facilities.

The Board of Education believes in creating an outstanding culture for our teachers to teach in and our students to learn in. They also believe in a rigorous curriculum, effective teachers, competitive facilities, and exceptional parent involvement.

## 2022 BOARD OF EDUCATION

Cori Swanson - President

Brian Wichman - Vice President

Kyle Fisher - Board Secretary

Brenda Guenther - Board Treasurer

Lisa Roseland - Member

Brian Osborn - Member



## SPRINGFIELD PLATTEVIEW EDUCATION FOUNDATION

Each year, public schools face the difficult task of building their educational programs solely on local property taxes and limited state funds. As our district grows, so do the needs of the students, staff, and community. Unfortunately, limitations of tax funds have a direct impact on educational growth within the community. Thus, other resources must be used to help supplement our growth and needs.

The SPCS Foundation provides avenues where individuals, organizations, and businesses can help support the school system through tax deductible contributions. The Foundation is a legally incorporated and non-profit organization that was established in accordance with the state and federal tax guidelines.

A seven-member Board of Directors representing our district and the surrounding community governs the operation of the Foundation. No financial compensation is provided to board members for services.



### BOARD OF DIRECTORS

- Gene Lieneman, President
- Keith Hentzen, Vice President
- Ryan Saunders, Treasurer
- Chris Dill, Member
- Kyle Fisher, Member
- Tim Lorenz, Member
- Tom Marshall, Member
- Brenda Guenther, Member
- Financial Advisor: John Wright & Morgan Stanley

### OPPORTUNITIES & AWARDS PROVIDED

- Monetary awards to recognize meritorious instruction
- Student scholarships
- Promotion of educational technology
- Small grants for innovative instructional opportunities
- Promotion of community educational opportunities
- Career development programs
- Stimulate programs or projects in the Humanities

### FOUNDATION SUPPORT OVER THE YEARS

- Cash or securities gifts
- Memorial gifts or scholarships, honoring relatives or friends
- Deferred gifts through bequests, trusts, or life insurance policies
- Gifts designed to support a particular program

2020-2021



# NOTICES

---

## **NEBRASKA SEAT BELT/SAFETY REMINDER**

All children up to age eight must ride correctly secured in a Federally-approved car seat or booster seat. This requirement is effective for all persons operating a motor vehicle within the State of Nebraska. No matter the length of the trip, all riders should buckle up at all times in a motor vehicle.

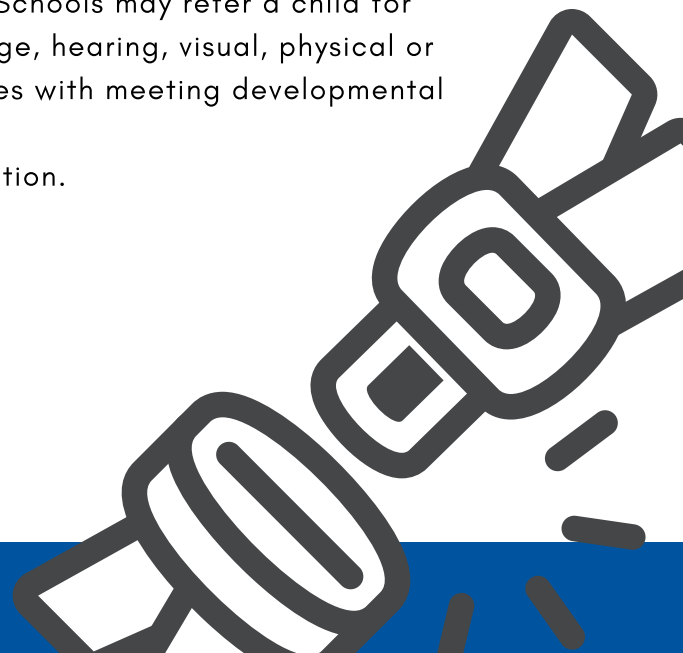
## **NOTICE OF NON-DISCRIMINATION**

Springfield Platteview Community Schools, Springfield, Nebraska, does not discriminate on the basis of sex, disability, race (including skin color, hair texture and protective hairstyles), color, religion, veteran status, national or ethnic origin, age, marital status, pregnancy, childbirth or related medical condition, sexual orientation or gender identity, or other protected status in its programs. Springfield Platteview Community Schools does not discriminate on the basis of handicap in its educational programs and activities, including its admissions and employment practices, all as required by Section 504 of The Rehabilitation Act of 1973.

## **SPECIAL EDUCATION CHILD FIND**

Any resident of the Springfield Platteview Community Schools may refer a child for special education services because of speech, language, hearing, visual, physical or behavioral impairment, learning disabilities, or struggles with meeting developmental milestones. Additional information can be found at:  
<https://www.springfieldplatteview.org/Special-Education>.

***CONTINUED ON THE NEXT PAGE.***



2020-2021

# NOTICES

---



## **STUDENT ASSISTANCE PROGRAM**

The Springfield Platteview Community Schools makes available a student assistance team through each school building to provide problem solving and assistance for students and families who may be experiencing obstacles academically and/or emotionally. Please contact your child's school to discuss in further detail.

## **TEACHER QUALIFICATION**

As part of the federal No Child Left Behind legislation, all parents have the right to request information about teacher qualifications. General information about district teacher qualifications is available on the Nebraska Department of Education website ([www.education.ne.gov](http://www.education.ne.gov)) as part of the State of the Schools report. Specific requests for teacher qualification information should be directed to the Superintendent of Springfield Platteview Community Schools.

## **SPRINGFIELD PLATTEVIEW COMMUNITY SCHOOLS**

14801 South 108th Street  
Springfield, NE 68059





***Future Planning  
February, 2022***

- 2/28/22 Board Work Session 7pm
  
- 3/14/22 Americanism Committee 6:00pm  
Finance Committee 6:30pm  
Regular Board Meeting 7:00pm
  
- Week of  
3/14/22 Spring Break
  
- 3/28/22 Board Work Session 7pm
  
- 4/1/22 NSBA National Conference
  
- 4/11/22 Policy Committee 6:00pm  
Finance Committee 6:30pm  
Regular Board Meeting
  
- 4/20/22 Day 60 Of Legislative Session