

Board of Education Work Session

April 22, 2013 7:00 PM

Board Room, Central Services Building
765 Main St
Springfield, NE 68059

Agenda

- I. Meeting Roll Call
- II. Notice of Open Meetings Act - Posted
- III. Public Comment
- IV. Items for Discussion (Discussion Only)
 - IV.A. Teammates Program
 - IV.B. Classified Staffing for 2013-14
 - IV.C. Facility Improvements Process
 - IV.D. Softball field update
- V. Action Items
 - V.A. Legislation Committee Member #13
- VI. Future Planning
- VII. Executive Session
 - VII.A. Personnel
 - VII.B. Return from Executive Session
- VIII. Adjourn

USE OF SCHOOL RESOURCES FOR POLITICAL ACTIVITIES

Under Nebraska law, school board members and employees are limited in the kinds of political activities they can engage in to support or oppose ballot measures (e.g., a levy override or bond election). Here is a list of things you may and may not do.

YOU MAY...	YOU MAY NOT...
<p>Allow both supporters and opponents of the initiative to use school facilities equally and to charge them for their use of school facilities.</p>	<p>Allow one side of the issue to use public facilities for free, deny access to one side, or reimburse one side for its costs in supporting or opposing the measure.</p>
<p>Allow students to assist in campaigning outside of the school day.</p>	<p>Pressure students to participate; allow students to campaign on only one side.</p>
<p>Make public statements in support of a ballot initiative. This includes:</p> <ul style="list-style-type: none"> • stating your personal views on the ballot question • stating how you intend to vote • urging others to vote for or against the question • stating the opinion of the school board, administration or staff • making speeches to civic clubs and other groups about the ballot issue 	<p>Use any school resources in making these statements. This includes:</p> <ul style="list-style-type: none"> • driving a school car to give a speech, • having school staff prepare these statements while on school time, • seeking reimbursement for mileage or expenses; • participating while "on the clock" • using school resources such as telephones, computers, personnel, paper, etc.

YOU MAY...	YOU MAY NOT...
Respond to a question about your views on a ballot question, even if it is on school time or involves using school resources.	Solicit questioners to ask for your opinion or call a press conference to announce your position.
Develop a strategy for educating the public on the ballot question.	Develop a strategy for supporting or defeating a ballot question using school resources.
Respond to questions about the ballot question on school stationary.	Initiate correspondence in which you offer your opinion.
Allow your name and official title to be listed in a newspaper ad in support of or opposition to a ballot question.	Use school money to pay for the ad; pay school employees to write and design the ad during school time.
Pass a school board resolution in support of a ballot.	Call a special meeting for the purpose of passing such a resolution.
Truthfully respond to phone calls to your home or office soliciting your opinion.	Place phone calls to campaign while on government property or during work time.

Newsletters and Other School Publications

There are some unique rules about what a school district may include in a school newsletter or other publication which is distributed to patrons.

YOU MAY...	YOU MAY NOT...
<p>Provide information about the ballot issue. You may:</p> <ul style="list-style-type: none"> • mail information about the ballot issue with your regular newsletter (as long as it is fair and balanced) • print a discussion of the ballot initiative in a newsletter, giving both sides • Acceptable: The school system is designed for 500 students. 600 students are currently enrolled. Demographic studies of preschoolers in the district show that in four years the school will have 850 students. The bond issue will result in building classrooms that will accommodate 900 students. Bonds will be paid through real estate taxes. This will increase by \$75.00 per year the real estate tax on a home valued at \$50,000.00. The total cost for this project is \$1 million dollars. 	<p>Use public funds to urge voters to vote one way or another. You may not:</p> <ul style="list-style-type: none"> • mail a statement expressing the views of school officials • include an "informational statement" which advocates about the ballot measure either overtly or implicitly in a newsletter • Unacceptable: The school system is designed for 500 students. Currently there are 600 students squeezed into existing facilities. Demographic studies of preschoolers in the district show that in four years there will be an explosion of students which will result in 850 students being packed into the school like sardines. The bond issue will result in the construction of new classrooms that will accommodate a total of 900 students in a modern and safe environment. The owner of a home with the value of \$50,000.00 would pay a mere 22 cents a day to insure that our children have adequate school facilities.



Use of District Resources

Goals Framework
Funding Sources
Communication



DLR Group

Architecture Engineering Planning Interiors

Cooperation

Tradition

Fundraising

Learning Environment

High Student Achievement

SPRINGFIELD PLATTEVIEW FACILITY MASTER PLAN STUDY

Student Centered Learning

Approach

FACILITY AUDIT & MASTER PLAN STUDY

Key to Master Plan Success

listen Finding the right answers starts with
DESIGN this group asking the right questions,
deliver having the humility to listen closely to
one another and having the courage
and perseverance to follow through.

Four Primary Tasks

- Existing Facility Audit & Program Assessment
- Facility Master Plan
- Cost Analysis
- Project Funding



Approach | Facility Audit

FACILITY AUDIT & MASTER PLAN STUDY

Key Issues

- Identify Stakeholders
 - Springfield Platteview Public Schools
 - City of Springfield
 - Satrpy County
 - Business Partners
 - Community Patrons
 - Design Team Members
- Determine Memorable Goals & Objectives
- Confirm Existing Facility Conditions
 - Site
 - Size
 - Activity / Athletic Facilities
 - Parking / Paving
 - Utilities
 - Building Envelope
 - Roofs
 - Walls
 - Windows & Doors
 - Interior Finishes
 - Floors
 - Walls
 - Ceilings
 - Code Requirements
 - Accessibility



Approach | Facility Audit

FACILITY AUDIT & MASTER PLAN STUDY

Key Issues

- Mechanical Systems
 - HVAC
 - Controls / EMS
 - Plumbing Systems
 - Fire Protection
- Electrical Systems
 - Power
 - Lighting
 - Fire Alarm
- Data & Communication Systems
 - Cabling
 - Networking
 - Telephone / Intercom



Approach | Facility Planning

FACILITY AUDIT & MASTER PLAN STUDY

Key Educational Trends & Program Assessment Issues

- Follow District's Strategic Plan
- Identify Program Strengths & Weaknesses
- Staff & Student Needs
- Integrated Technology
- Safety & Security
- High Performance Design
- Facility as Teaching Tool
- Flexibility / Adaptability
- Hands-on Applied Learning
- Interdisciplinary Teams
- Independent Study
- Teaming
- Community Use



Approach | Facility Planning

FACILITY AUDIT & MASTER PLAN STUDY

Key Issues

- Confirm Program Requirements
 - Enrollment & Capacity
 - Class size standards
 - Educational Space Program
 - Utilization Analysis
 - Existing space use
 - Deficiencies
 - Program Examples
- Site Amenities
 - Activity Fields
 - Parking
 - Traffic flow
- Facility Plan Conceptual Options
 - How the use existing facility assets to meet identified programmatic needs
 - Floor Plans
 - Remodeling / Renovation Scope
 - Additions (if required)
 - Site Plans



Approach | Cost Analysis

FACILITY AUDIT & MASTER PLAN STUDY

Key Issues

- Clearly Defined Project Scope
 - Site & Utility Related Costs
 - Remodeling & Renovation
 - Additions / New Construction
 - Building Construction Systems
 - Quality Considerations
- Determine **TOTAL** Project Cost
 - Site & Infrastructure
 - Construction
 - Equipment
 - A/E Services
 - Misc Expenses
 - Contingency



Approach | Project Funding Assistance

FACILITY AUDIT & MASTER PLAN STUDY

Key Issues

- Funding Options & Sources
 - General Building Fund
 - QCPUF
 - General Obligation Bonds
 - Tax Levy Impact
 - Grants & Contribution Opportunities



Approach | Future Meeting Dates

FACILITY AUDIT & MASTER PLAN STUDY

Tentative Future Meeting Dates

Meeting # 2 Thursday April 18th (Springfield Elementary)

Enrollment & Educational Program Assessment Report (HS, MS, EL's)
Building Tour – Middle School

Meeting # 3 Thursday, May 2nd (Westmont Elementary)

Physical Plant Needs Assessment Report
Building Tour

Meeting # 4 (Date & Location to be determined)

Review of Facility Improvement Options & Costs
Open Small & Large Group Discussion

Meeting # 5 (Date & Location TBD & Perhaps Joint Facility Committee / School Board Meeting)

Develop Consensus for Recommendation





QUESTIONS?



SPRINGFIELD PLATTEVIEW FACILITY MASTER PLAN STUDY
Meeting # 2

School District & County Population History

FACILITY AUDIT & MASTER PLAN STUDY

SCHOOL DISTRICT TOTAL POPULATION

<u>Year</u>	<u>Total</u>	<u>% Variance</u>
1990	6,950	-
2000	6,985	+0.5%
2010	7,906	+13.1%

TOTAL INCREASE SINCE 1990 OF +13.7% (ANNUAL AVERAGE OF +0.69%)

SARPY COUNTY TOTAL POPULATION

<u>Year</u>	<u>Total</u>	<u>% Variance</u>
1990	102,583	-
2000	122,595	+19.5%
2010	158,840	+29.6%

TOTAL INCREASE SINCE 1990 OF +54.8% (ANNUAL AVERAGE OF +2.7%)

Enrollment History

FACILITY AUDIT & MASTER PLAN STUDY

<u>Year</u>	<u>Total Enrollment</u>	<u>% Variance</u>
1996-97	1268	-
1997-98	1250	-1.4%
1998-99	1188	-4.9%
1999-00	1159	-2.4%
2000-01	1086	-6.3%
2001-02	1094	+7%
2001-03	1058	-3.3%
2003-04	1045	-1.2%
2004-05	1041	-.3%
2005-06	1066	+2.4%
2006-07	1072	+6%
2007-08	1106	+3.1%
2008-09	1065	-3.7%
2009-10	1054	-1%
2010-11	1009	-4.3%
2011-12	1025	+1.6%
2012-13	1021	-.3%

TOTAL DECREASE SINCE 1996-97 OF -19.7% (ANNUAL AVERAGE OF -1.2%)

Educational Program Needs

FACILITY AUDIT & MASTER PLAN STUDY

Springfield Elementary - Key Issues

- **Age of Building** –Original Building – 1960, Addition - 1976
- **Building Size** – 31,876 SF
- **Enrollment & Capacity**
 - Current Enrollment – 286
 - Building Capacity – 352 including portable classrooms (Currently at 81% of capacity)
 - Building Capacity – 277 excluding portable classrooms (Currently at 103% of capacity)
- **Educational Space Program Needs**
 - Add security & building access control
 - Prefer to have Pre-School classroom on site
 - Portable classrooms (Art & DLC) are inadequate
 - Remodel & expand media center
 - Band space is inadequate
 - Open / Demountable walls in classrooms is inadequate
 - ADA upgrades
- **Site Amenity Needs**
 - Additional parking
 - Traffic flow needs to be improved
 - Resurface hard surface play area
- **Physical Plant Needs**
 - HVAC upgrade to original building
 - Roof beams in gym are dry rotted
 - Electrical upgrades throughout original building
 - Upgrade telephone & intercom systems
 - Improve drainage around the perimeter of original building
 - Replace food service dishwasher
 - Replace ceiling tile throughout
 - Kitchen equipment is getting towards the end of its useful life
 - Fire sprinkler addition

Educational Program Needs

FACILITY AUDIT & MASTER PLAN STUDY

Westmont Elementary - Key Issues

- **Age of Building -1974**
- **Building Size – 33,656 SF**
- **Enrollment & Capacity**
 - Current Enrollment – 255
 - Building Capacity – 342 including portable classroom (Currently at 75% of capacity)
 - Building Capacity – 317 excluding portable classroom (Currently at 80% of capacity)
- **Educational Space Program Needs**
 - Add security & building access control
 - Open / Demountable walls in classrooms is inadequate
 - Portable classroom (Guidance) is inadequate
 - Add classroom storage cabinets
 - Update media center
 - Band space is inadequate
 - ADA upgrades
- **Site Amenity Needs**
 - Add parking
 - Traffic flow needs to be improved
 - Resurface hard surface play area
- **Physical Plant Needs**
 - HVAC upgrade to original building (Cooling tower, piping, heat pumps & controls)
 - Replace lighting in media center and gymnasium
 - Replace skylight
 - Replace exterior windows & doors
 - Replace food service dishwasher
 - Electrical upgrades
 - Kitchen equipment is getting towards the end of its useful life
 - Fire sprinkler addition

Educational Program Needs

FACILITY AUDIT & MASTER PLAN STUDY

Platteview Central - Key Issues

- **Age of Building - 1974**
- **Building Size – 33,566 SF**
- **Enrollment & Capacity**
 - Current Enrollment – 158
 - Building Capacity – 221 (Currently at 72% of capacity)
- **Educational Space Program Needs**
 - Add security & building access control
 - Open / Demountable walls in classrooms is inadequate
 - Gymnasium space is inadequate
 - Connection to HS is required for shared programs & staff
 - Remodel science lab to meet Jr. High needs
 - Several open classrooms
 - Pre-School program located in building due to space availability
- **Site Amenity Needs**
 - Additional parking is needed
 - Traffic flow needs to be improved
- **Physical Plant Needs**
 - HVAC upgrade to entire building (Cooling tower media, piping, heat pumps & controls)
 - Add fire sprinkler system (if building addition is added)
 - Replace skylight & repair gyp. board bulkhead
 - Replace lighting in classroom areas
 - Replace all exterior windows & doors
 - Replace food service dishwasher
 - Kitchen equipment is getting towards the end of its useful life
 - Fire sprinkler addition

Educational Program Needs

FACILITY AUDIT & MASTER PLAN STUDY

Springfield – Platteview High School - Key Issues

- **Age of Building – Original Building – 1960, Additions – 1974, 1976, 2004**
- **Building Size – 139,398 SF**
- **Enrollment & Capacity**
 - Current Enrollment – 322, Building Capacity – 466 (Currently at 69% of capacity)
- **Educational Space Program**
 - Add security & building access control
 - Update & enlarge science labs
 - Update existing media center
 - Expand weight / fitness room
 - Locker room spaces are inadequate
- **Site Amenities**
 - Parking lot size and location is inadequate
 - Traffic flow needs to be improved
 - Need outdoor equipment storage at track / football field
 - Add practice field irrigation
 - Add football field visitor side bleachers, restrooms and concessions
- **Physical Plant Needs**
 - Sewage lagoons need to be renovated and resealed
 - HVAC upgrade to original building (Cooling tower, piping, heat pumps & controls)
 - Add proper ventilation in locker rooms
 - Replace remaining windows in original building
 - Repair roof deck and roof membrane in original building
 - Repair through wall flashing leaks at Band room
 - Replace ceiling tiles throughout original building
 - Add lighting in scene shop
 - Improve finish room ventilation

Educational Program Needs

FACILITY AUDIT & MASTER PLAN STUDY

District Administration Building - Key Issues

- Age of Building - 1987
- Building Size – 6,400 SF

- Space Program Needs
 - Add security & building access control
 - Addition staff development space
 - Addition district supply storage

- Site Amenities
 - Parking lot size and location is inadequate
 - Traffic flow needs to be improved

- Physical Plant Needs
 - Improve building exterior insulation / energy efficiency

District Bus Maintenance & Storage Buildings - Key Issues

- Age of Building - Old
- Building Size -2,300 SF & 1,400 SF

- Space Program Needs
 -

- Site Amenities
 - Bus parking area is not paved and conflicts with HS event parking & access

- Physical Plant Needs
 - Improve building exterior insulation / energy efficiency

School District Tax Levy & Financial Information

FACILITY AUDIT & MASTER PLAN STUDY

Total Levy Comparison

Springfield Platteview – 1.0784

Common LC Levy - .95, General – .0999, Bond – 0.028485, QCPU – 0.000

Bellevue	1.0494 (Federal Impact Aid District)
Springfield / Platteview	1.0784
Douglas County West	1.0957
Blair	1.1768
Norris	1.1887
Louisville	1.1900
Omaha	1.2046
Millard	1.2210
Waverly	1.2167
Elmwood Murdock	1.2233
Ralston	1.2324
Papillion	1.2559
Plattsmouth	1.2607
Westside	1.3001
Elkhorn	1.3100
Raymond Central	1.3139
Nebraska City	1.3652
Bennington	1.3900
Gretna	1.3901

TOTAL SPRINGFIELD – PLATTEVIEW DISTRICT PROPERTY VALUATION - \$1,095,649,000

Approach | Future Meeting Dates

FACILITY AUDIT & MASTER PLAN STUDY

Tentative Future Meeting Dates

Meeting # 2 Thursday April 18th (Springfield Elementary)

Enrollment & Educational Program Assessment Report (HS, MS, EL's)
Building Tour – Middle School

Meeting # 3 Thursday, May 2nd (Westmont Elementary)

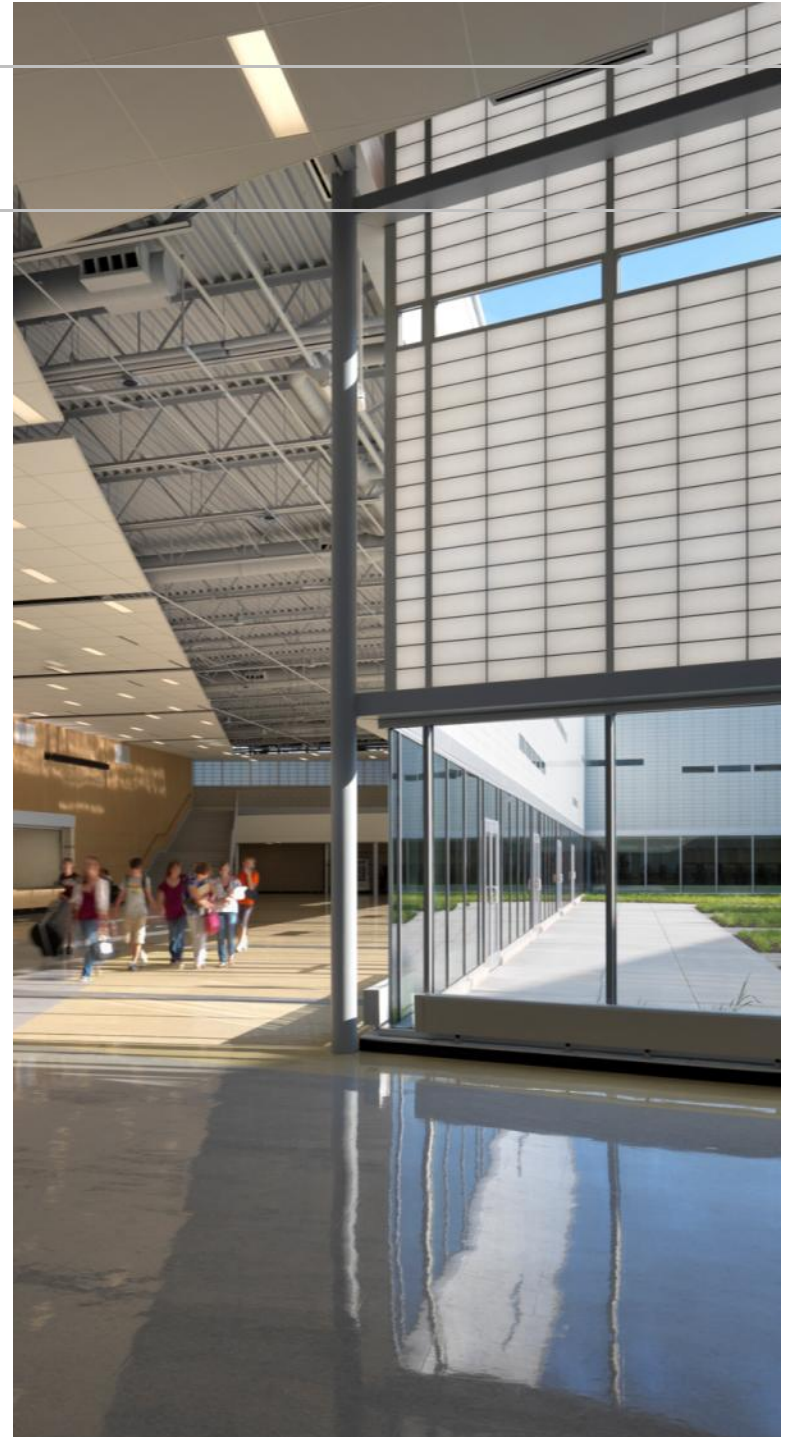
Physical Plant Needs Assessment Report
Building Tour

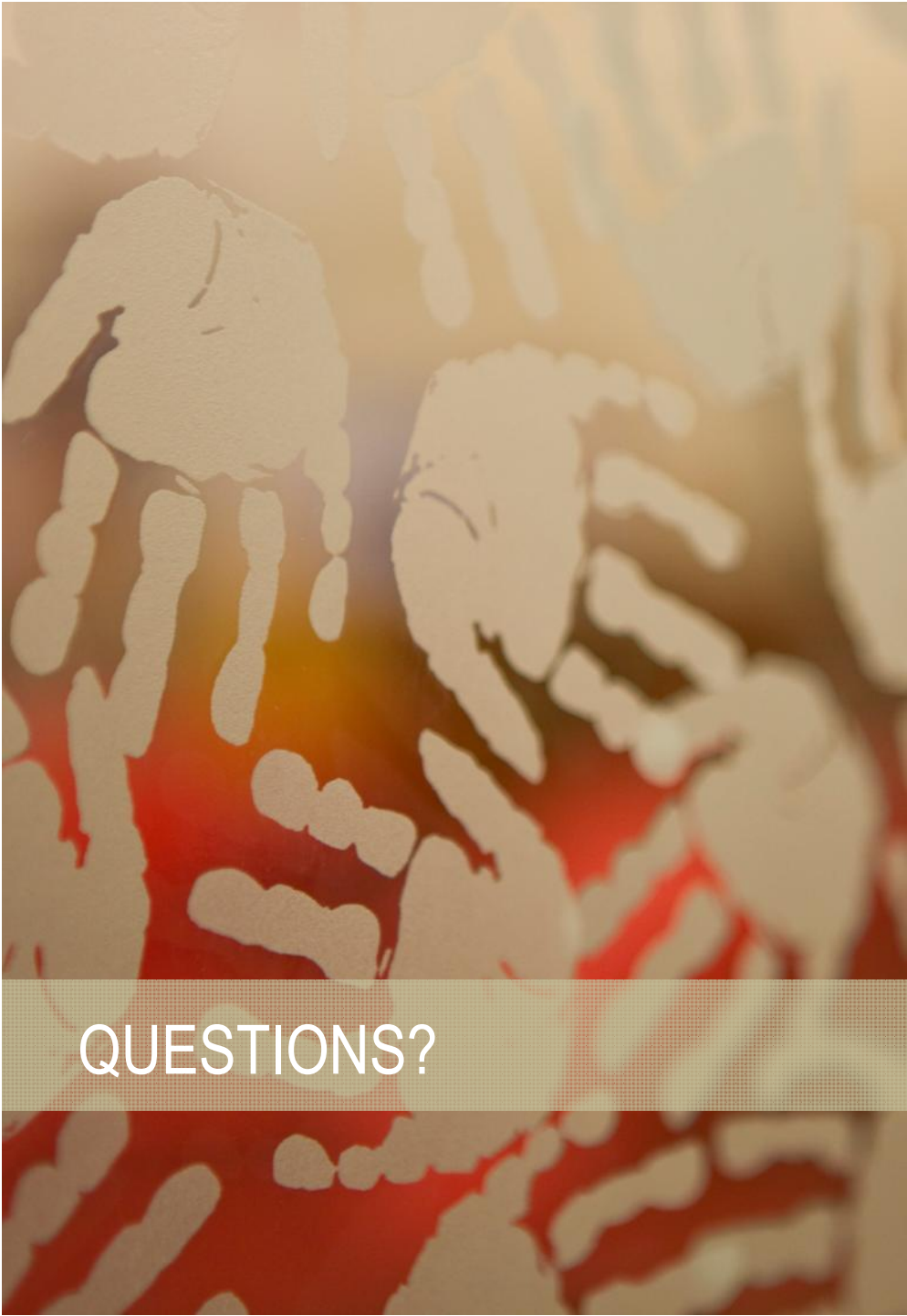
Meeting # 4 (Date & Location to be determined)

Review of Facility Improvement Options & Costs
Open Small & Large Group Discussion

Meeting # 5 (Date & Location TBD & Perhaps Joint Facility Committee /
School Board Meeting)

Develop Consensus for Recommendation





QUESTIONS?

\$10,000,000

Projected Levy Increase

6.2 Cents

Springfield-Platteview Community Schools

\$10,000,000

How will 6.2 cents affect me?

Valuation	Annually	Monthly	Daily
\$100,000	\$62.00	\$5.16	\$0.17
\$150,000	\$93.00	\$7.75	\$0.25
\$200,000	\$124.00	\$10.33	\$0.34
\$500,000	\$310.00	\$25.83	\$0.85
\$1,000,000	\$620.00	\$51.67	\$1.70

***Average home Valuation for Sarpy County = \$163,947**

Agricultural Land (Quarter Section)

1 Quarter Section	Annually	Monthly	Daily
Irrigated 1A1 (\$584,320)	\$362.28	\$30.19	\$0.99
Irrigated 2A <u>48.54%</u> (\$472,800)	\$291.13	\$24.43	\$0.80
Irrigated 4A (\$266,720)	\$165.36	\$13.78	\$0.45

1 Quarter Section	Annually	Monthly	Daily
Dry 1D1 (\$580,480)	\$359.90	\$29.99	\$0.98
Dry 3D1 <u>43.28%</u> (\$415,680)	\$257.72	\$21.47	\$0.70
Dry 4D (\$228,640)	\$141.75	\$11.81	\$0.39

Agricultural Land (Per Acre)

1 Quarter Section	Annually
Irrigated 1A1 (\$3,652)	\$2.26
Irrigated 2A <u>48.54%</u> (\$2,955)	\$1.83
Irrigated 4A (\$1,667)	\$1.03

1 Quarter Section	Annually
Dry 1D1 (\$3,628)	\$2.25
Dry 3D1 <u>43.28%</u> (\$2,598)	\$1.61
Dry 4D (\$1,429)	\$0.88

\$12,000,000

Projected Levy Increase

7.4 Cents

Springfield-Platteview Community Schools

\$12,000,000

How will 7.4 cents affect me?

Valuation	Annually	Monthly	Daily
\$100,000	\$74.00	\$6.16	\$0.20
\$150,000	\$111.00	\$9.25	\$0.30
\$200,000	\$148.00	\$12.33	\$0.40
\$500,000	\$370.00	\$30.83	\$1.01
\$1,000,000	\$740.00	\$61.66	\$2.02

***Average home Valuation for Sarpy County = \$163,947**

Agricultural Land (Quarter Section)

1 Quarter Section	Annually	Monthly	Daily
Irrigated 1A1 (\$584,320)	\$432.39	\$36.03	\$1.18
Irrigated 2A <u>48.54%</u> (\$472,800)	\$349.87	\$29.15	\$0.95
Irrigated 4A (\$266,720)	\$197.37	\$16.44	\$0.54

1 Quarter Section	Annually	Monthly	Daily
Dry 1D1 (\$580,480)	\$429.55	\$35.79	\$1.17
Dry 3D1 <u>43.28%</u> (\$415,680)	\$307.60	\$25.63	\$0.84
Dry 4D (\$228,640)	\$169.19	\$14.10	\$0.46

Agricultural Land (Per Acre)

1 Quarter Section	Annually
Irrigated 1A1 (\$3,652)	\$2.70
Irrigated 2A <u>48.54%</u> (\$2,955)	\$2.18
Irrigated 4A (\$1,667)	\$1.23

1 Quarter Section	Annually
Dry 1D1 (\$3,628)	\$2.68
Dry 3D1 <u>43.28%</u> (\$2,598)	\$1.92
Dry 4D (\$1,429)	\$1.05

\$15,000,000

Projected Levy Increase

9.3 Cents

Springfield-Platteview Community Schools

\$15,000,000

How will 9.3 cents affect me?

Valuation	Annually	Monthly	Daily
\$100,000	\$93.00	\$7.75	\$0.25
\$150,000	\$139.50	\$11.62	\$0.38
\$200,000	\$186.00	\$15.50	\$0.51
\$500,000	\$465.00	\$38.75	\$1.27
\$1,000,000	\$930.00	\$77.50	\$2.54

***Average home Valuation for Sarpy County = \$163,947**

Agricultural Land (Quarter Section)

1 Quarter Section	Annually	Monthly	Daily
Irrigated 1A1 (\$584,320)	\$543.41	\$45.28	\$1.48
Irrigated 2A <u>48.54%</u> (\$472,800)	\$439.70	\$36.64	\$1.20
Irrigated 4A (\$266,720)	\$248.05	\$20.67	\$0.68

1 Quarter Section	Annually	Monthly	Daily
Dry 1D1 (\$580,480)	\$539.84	\$44.98	\$1.48
Dry 3D1 <u>43.28%</u> (\$415,680)	\$386.58	\$32.21	\$1.06
Dry 4D (\$228,640)	\$212.63	\$17.72	\$0.58

Agricultural Land (Per Acre)

1 Quarter Section	Annually
Irrigated 1A1 (\$3,652)	\$3.39
Irrigated 2A <u>48.54%</u> (\$2,955)	\$2.75
Irrigated 4A (\$1,667)	\$1.55

1 Quarter Section	Annually
Dry 1D1 (\$3,628)	\$3.37
Dry 3D1 <u>43.28%</u> (\$2,598)	\$2.41
Dry 4D (\$1,429)	\$1.33



1317 Stockwell Street
Lincoln, NE 68502
Phone: 800-422-4572
www.nasbonline.org

TO: School Board President
FROM: Sallie Svatora, Director of Operations
DATE: April 9, 2013
SUBJECT: Legislation Committee Member #13

This memo and its enclosures contain information about the nomination and election of members to the Legislation Committee of the Nebraska Association of School Boards (NASB). Legislation Committee Member #13 is up for special election due to the early resignation of Kathy Bartek. Seat #13 has two years remaining in the current three-year term and will be up for election again in 2015. As an active member board, which will be represented by Legislation Committee Member #13, you are invited to submit a nomination and to participate in the election. Due to the timing of this resignation, nominations are due **no later than April 24, 2013**.

For your information, here is a copy of the typical nomination and election schedule; however, due to the recent resignation of this seat, the schedule is altered and the nomination process needs your immediate attention:

February	Mailing of Legislation Committee appointment/nomination forms.
March 15	Legislation Committee appointment/nomination forms deadline.
May <i>Bulletin</i>	Call for Resolutions/Standing Positions.
June	NASB Board of Directors Meeting (Board will vote on the recommendations from the Nominating Committee for the elected Legislation Committee seats).
July 1	New Legislation Committee term starts.
July	Resolutions/Standing Positions deadline.
July 20	Legislation Committee Meeting at Holiday Inn in Kearney.
August	NASB Board of Directors Meeting (Board acts on resolutions and standing positions advanced from the Legislation Committee).
Aug -Oct.	Area Membership Meeting Legislative Report.
October	Action Book in hands of membership (35 days prior to D.A.).
November 15	Delegate Assembly at the LaVista Convention Center/Embassy Suites, LaVista, NE.
Jan./Feb., 2014	Legislative Issues Conference, Lincoln, NE.

PC Superintendent and Administrative Assistant

Enclosures

Nebraska Association of School Boards
Legislation Committee
Duties and Reimbursement of Expenses

Committee Duties:

1. To attend and participate in the July 20, 2013 meeting of the Committee.
2. To attend and participate in one of NASB's Fall Area Membership Meetings in August, September, and October, 2013.
3. To attend and participate in the NASB Delegate Assembly to be held as part of the State Education Conference in Omaha on November 13-15, 2013.
4. To attend and participate in the Legislative Issues Conference in January or February, 2014.
5. To attend and participate in Legislative activities or hearings when scheduled by NASB staff.
6. To attend and participate in any other special meetings of the Legislation Committee which may be called. Such special meetings may be held in person, by phone or electronic means.
7. To receive, consider, and act upon legislative resolution and position statement proposals submitted by member boards, officers, and directors.
8. To meet and provide advice, instructions, and interpretations of legislative resolutions.

Expense Reimbursement:

1. Legislation Committee meetings held as part of another NASB meeting: No expenses will be reimbursed. (Example: the November 13-15 State Education Conference.)
2. Legislation Committee meetings not held as part of another NASB meeting: Expenses will be reimbursed in accordance with the provisions listed, below. (Example: the annual July meeting.)

Mileage: The reimbursement rate for personal automobile travel shall be the state mileage reimbursement rate for designated events and approved travel. (Current rate is 56.5 cents per mile)

Lodging: Single rate.

Meals: Actual cost up to a maximum amount established annually by the Board of Directors.

3. Legislative Issues Conference held in January or February: Complimentary registration fee for Monday only.

Expense claims must be submitted on the standard expense form supplied by the Association. Receipts for lodging and meal expenses are required.



NASB Legislation Committee Nomination Form for Member #13

THIS FORM MUST BE RECEIVED AT NASB BY APRIL 24, 2013

Name: _____

Address: _____

City, State, Zip: _____

Telephone: _____

Home

Work

Cellular

Email Address: _____

Local Board Service

Name of local school board: _____

Years of service on local board: _____

Current office held on local school board: _____

Past offices held on local school board: _____

Association Participation

State Conferences: _____

National (NSBA) Conventions: _____

Workshops: _____

Awards Received: _____

(OVER)



**Board of Education
Future Planning
April 8, 2013**

1. 4/29/13- Community Advisory Meeting
2. 5/2/13- Parent/ Community Night on facilities @ Westmont Elem. 7 PM
3. 5/5/13- Baccalaureate 2 PM at PHS
4. 5/13/13- Regular Board Meeting, Policy Committee 6 PM, Finance 6:30 PM
5. 5/15/13- Recognition Banquet at Millard Social Hall, 6 PM
6. 5/19/13- PHS Commencement Ceremony, 1 PM
7. 5/20/13- Foundation Board Meeting, 7:30 AM
8. 6/7/13- NASB School Law Workshop- Kearney
9. 6/21/13- Foundation Golf Tournament, Tregaron Golf Course, 1 PM
10. 7/12/13- Foundation Dinner/ Auction, Millard Social Hall, 6 PM
9. 7/21/13- Board Retreat