



**POSTED AGENDA  
Regular Meeting of  
Independent School District No. 71  
Kay County, Oklahoma  
Ponca City Board Of Education  
Board Room  
Administration Center  
613 East Grand Avenue  
Ponca City, Oklahoma  
Monday, February 9, 2026  
6:00 PM**

**1. CALL TO ORDER**

- 1. Call Meeting to Order** *(President)*
- 2. Flag Salute**
- 3. Roll Call** *(Minutes Clerk of the Board)*

**2. PRESENTATIONS AND RECOGNITIONS**

- 1. Presentation of the Employee of the Month and Friend of Education Awards**  
The President of the Board will preside over presenting the February Employee of the Month and Friend of Education Awards to the following employees. **Certified Employee of the Month - Anthony McCrary**  
*Wildcat Way/Oklahoma History Teacher, Ponca City High School*  
**Support Employee of the Month - Kelly Bales**  
*Library Monitor, Woodlands Elementary*  
**Friend of Education - Mackenzie Hartwig**  
*Speech-Language Pathologist, Chatterbox*

**3. PUBLIC COMMENT**

**1. Comments From the Public**

The Ponca City Public Schools Board of Education recognizes the value of public comment in effective school governance and the importance of providing community members an opportunity to address the Board on educational issues. To ensure meetings are conducted in an orderly and efficient manner, the Board has established the following guidelines governing public participation.

Individuals or groups wishing to speak during the public comment portion of a Board meeting must check in with the Board Clerk no later than fifteen (15) minutes prior to the start of the meeting and complete the required public comment form.

The following must be provided in writing:

- Name and address of the individual
- The agenda item(s) the individual wishes to address
- The organization the individual represents or is affiliated with, if applicable

Speakers must be recognized by the Board President or other presiding officer prior to speaking and must state their name and organizational affiliation, if applicable, before beginning remarks. Comments must be limited to items listed on the meeting agenda. Unless otherwise modified by the presiding officer with Board approval, each speaker will be limited to a maximum of three (3) minutes. Total public comment during any regular meeting shall not exceed fifteen (15) minutes, and no individual may speak more than once during the same meeting. All remarks must be directed to the presiding officer; speakers may not address or question individual Board members.

For additional information regarding speaking privileges, please refer to Board Policy 1.3-6.0 Speaking Privileges of the Public, which is available at Board meetings and in the Board Policy Manual located on the district website, [www.pcps.us](http://www.pcps.us), under Board of Education.

4. **SUPERINTENDENT’S REPORT WITH POTENTIAL BOARD DISCUSSION**

1. **Legislative Update**
2. **District Updates**

5. **CONSENT AGENDA**

Motion required for the approval of the Consent Agenda as printed or as amended. Board members may, however, call for a separate vote on any or all items listed on the Consent Agenda.

1. **Minutes from the January 12, 2026, Regular Board of Education Meeting**
2. **Surplus Resolution**
3. **Approval of FY26 Budget Amendments**
4. **Approval of FY26 General Fund 11 Encumbrances #1014-#1175 in the amount of \$893,974.45**
5. **Approval of FY26 Building Fund 21 Encumbrances #162-#177 in the amount of \$98,774.22**
6. **Approval of FY26 Child Nutrition Fund 22 Encumbrances #94-#102 in the amount of \$83,408.05**
7. **Approval of Bond 33 Encumbrance #2 in the amount of \$3,261.03**
8. **Approval of Bond 35 Encumbrances #13-#20 in the amount of \$834,513.92**
9. **Approval of FY26 Gifts and Endowment Fund 81 Encumbrances #140-#153 in the amount of \$18,576.95**
10. **Approval of Change Order Listings as of February 4, 2026, for Funds 11, 21, 22, 30, 34, and 81**
11. **Approval of Budget Analysis Reports**
12. **Approval of Bond Fund Reports**
13. **Approval of Booster Club Reports**
14. **Approval of Activity Fund Reports/Requests**
15. **Approval of Treasurer’s Reports**
16. **Approval of Out of State Travel**
17. **Approval of the Ratification and Approval of Payrolls**
18. **Approval of an agreement with Adrenaline Fundraising for the Ponca City High School track team to conduct a fundraiser selling cookies, jerky, and**

popcorn. The agreement will be effective February 15, 2026, through March 15, 2026. All proceeds and expenses associated with this fundraiser will be handled through the Activity Fund.

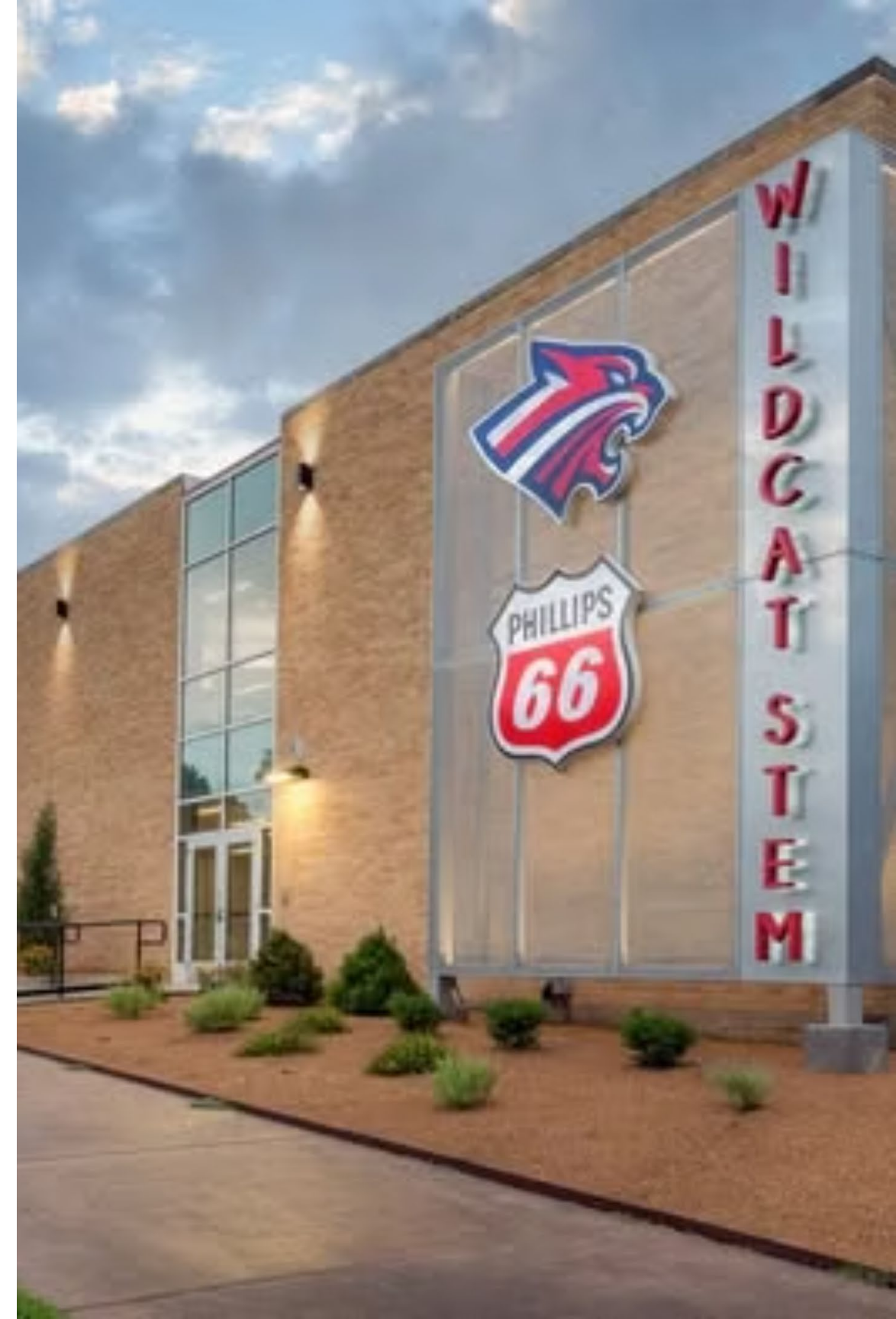
19. **Approval of an agreement with Associated Therapeutic Services to provide virtual professional behavioral health services to students. The agreement is effective February 9, 2026, through July 31, 2026, at no cost to the district.**
  20. **Approval of an agreement with Complete Weddings + Events to provide a DJ for the 2026 Prom to be held April 18, 2026. The total cost is \$795.00 and will be paid from the Activity Fund.**
  21. **Approval of a quote from Grimsleys, effective February 9, 2026, for a Chariot floor scrubber to be used at the high school. The total cost is \$9,300.00 and will come from the Building Fund.**
  22. **Approval to rescind the contract with Kirkhart Entertainment, originally approved at the January 12, 2026, board meeting for DJ services for prom. This action is requested because the district has entered into a new agreement with Complete Weddings + Events for the same services.**
  23. **Approval of a ratification of an agreement with Kuta Software LLC, effective October 25, 2024, through October 25, 2027, for a site license for the Infinite Pre-Algebra software used by the West Middle School Math Department. The original cost of \$320.00 was paid in the first year from Title I funds. This is the third year of a three-year agreement, and there is no cost to the district.**
  24. **Approval of a logo agreement with the Ponca City Police Department for patches commissioned for use during the Special Olympics. The logo agreement is for the 2025-2026 school year. There is no royalty fee.**
  25. **Approval of a Memorandum of Understanding/Program Services Agreement between Western New Mexico University (WNMU) and Ponca City Public Schools (PCPS), effective January 29, 2026, through May 31, 2028. This MOU is to designate field experience sites and define certain conditions to the satisfaction of both WNMU and PCPS. WNMU students will be placed in the schools in coordination with the Clinical Education division of the College of Education. There is no cost to the district.**
  26. **Approval of an agreement with Nellie Zotigh, effective March 2, 2026, to teach Wildcat Academy students how to bead. The total cost is \$100.00 and will come from Title VI funds.**
6. **ACTION ITEMS (MOTION REQUIRED)**
1. **Board to Consider and Take Action on a Resolution Determining the Maturities of, and Setting a Date, Time, and Place for the Sale of the \$11,840,000 General Obligation Building Bonds of the School District**
  2. **Consider and Approve an Agreement for Bond Counsel Services with Floyd & Driver, P.L.L.C., Attorneys at Law**
  3. **Consider and Take Action on the Ponca City School District Calendar for the 2026-2027 School Year**
  4. **Consider and Take Action to Approve an Update to Board Policy 5.12 - Wellness, to add Appendix A Identifying Designated District Wellness Leadership for Compliance Purposes**

5. **Consider and Take Action on Declaring March 2, 2026, as "Read Across America Day" in Ponca City Public Schools**
6. **Consider and Take Action on the following Contracts/Agreements:**
  - A. **A quote from Interworks for maintenance and licensing support for district wired and wireless networking equipment**
  - B. **An agreement with Marzano Evaluation for iObservation**
  - C. **An agreement with SHI International Corp. for Carbon Black software used throughout the district**
  - D. **An agreement with Softchoice for Microsoft licensing for the district**
  - E. **A quote from Trafera for Chromebooks and cases for the 2026-27 school year**
  - F. **A quote from Trafera for laptops and desktop computers**
7. **Motion and Vote to Convene in Executive Session for the Following Purposes: to Discuss the Possible Termination, Reassignment, Resignation, and Employment of Personnel on the Attached Detailed Personnel Report [Authority for Executive Session: 25 O.S. Section 307 (B) (1)]; to Discuss the Superintendent of Schools' Contract [Authority for Executive Session: 25 O.S. Section 307 (B) (1)]**
8. **Return to Open Session.**
9. **Recital by Board President that Minutes of Executive Session Were Kept by the Board Minutes Clerk and Will Remain Confidential**
10. **Consider and Take Action on Ratification/Renewal of the Contract or New Contract for the Superintendent of Schools**
11. **Consider and Take Action on Recommendations for Termination, Reassignment, Resignation, and Employment of Personnel**
7. **NEW BUSINESS**
8. **ADJOURNMENT (Motion required)**

The agenda was posted on the inside of the front east window of the Administration Building located at 613 E. Grand Avenue and on the district website located at [www.pcps.us](http://www.pcps.us) on February 5, 2026, at 2:00 p.m.

# PCPS Strategic Planning Update

A comprehensive overview of facility planning, strategic planning progress and legislative priorities



# Board Overview: Strategic Planning Journey

01

## Data Collection Phase

Completed enrollment analysis and facility audits across all district sites

02

## Partnership Kickoff

Formal collaboration with K20 Center from OU and OSSBA meeting this morning!

03

## Legislative Strategy

Monitoring state funding implications and key bills for 2024 session

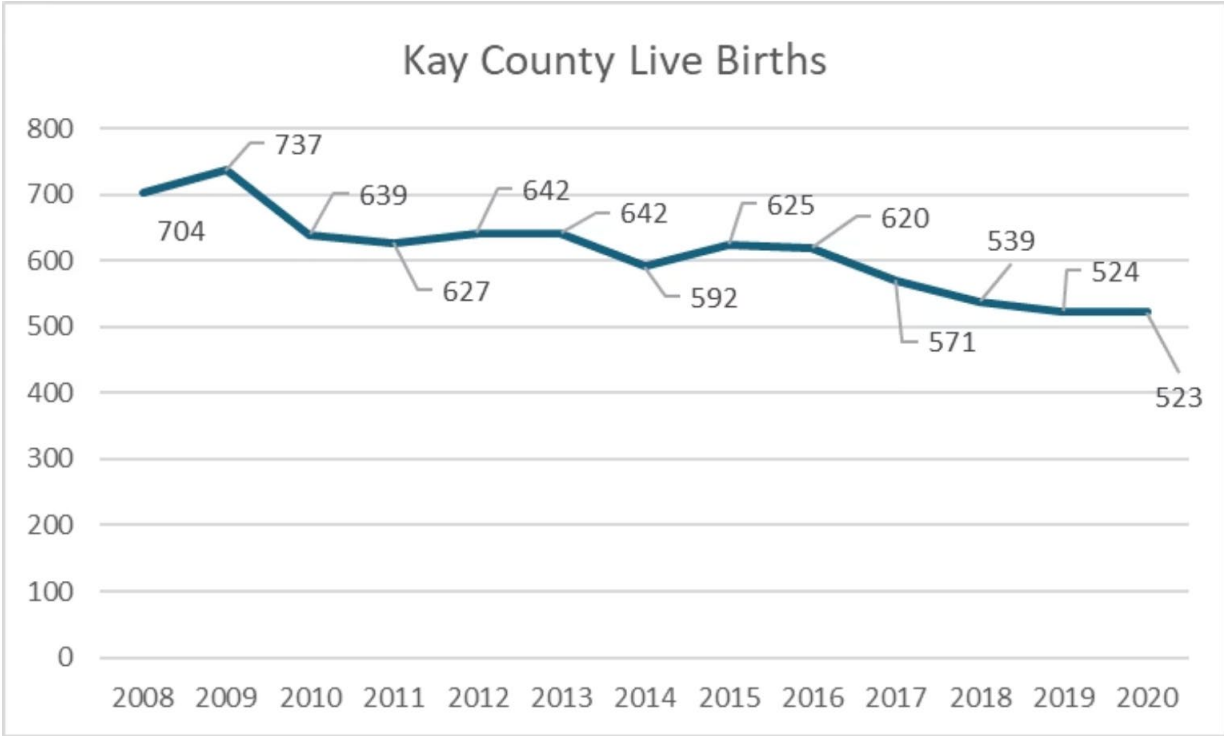
# Enrollment Data Submission Complete

## Comprehensive Historical Analysis

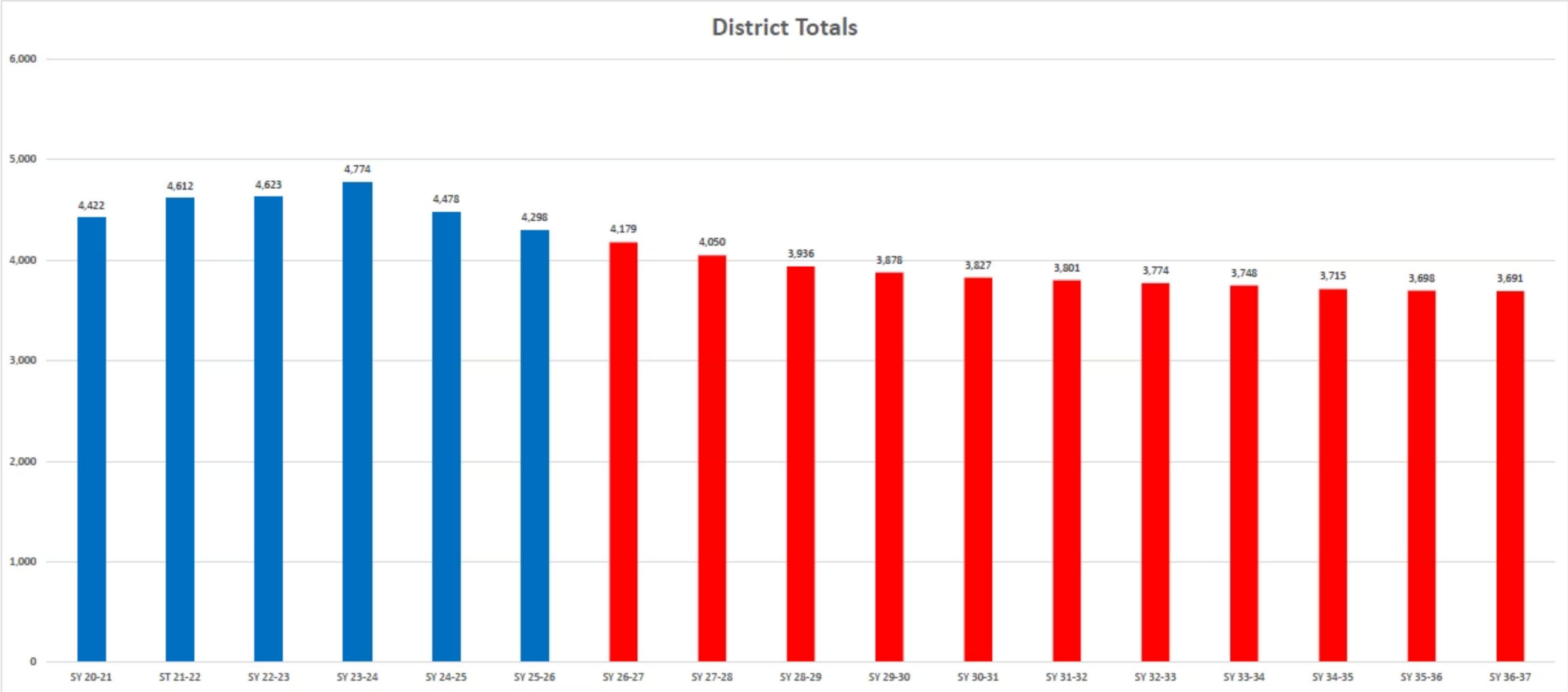
Our district has successfully compiled and submitted six full years of detailed enrollment data, providing critical insights into student population trends.

### Key Data Components

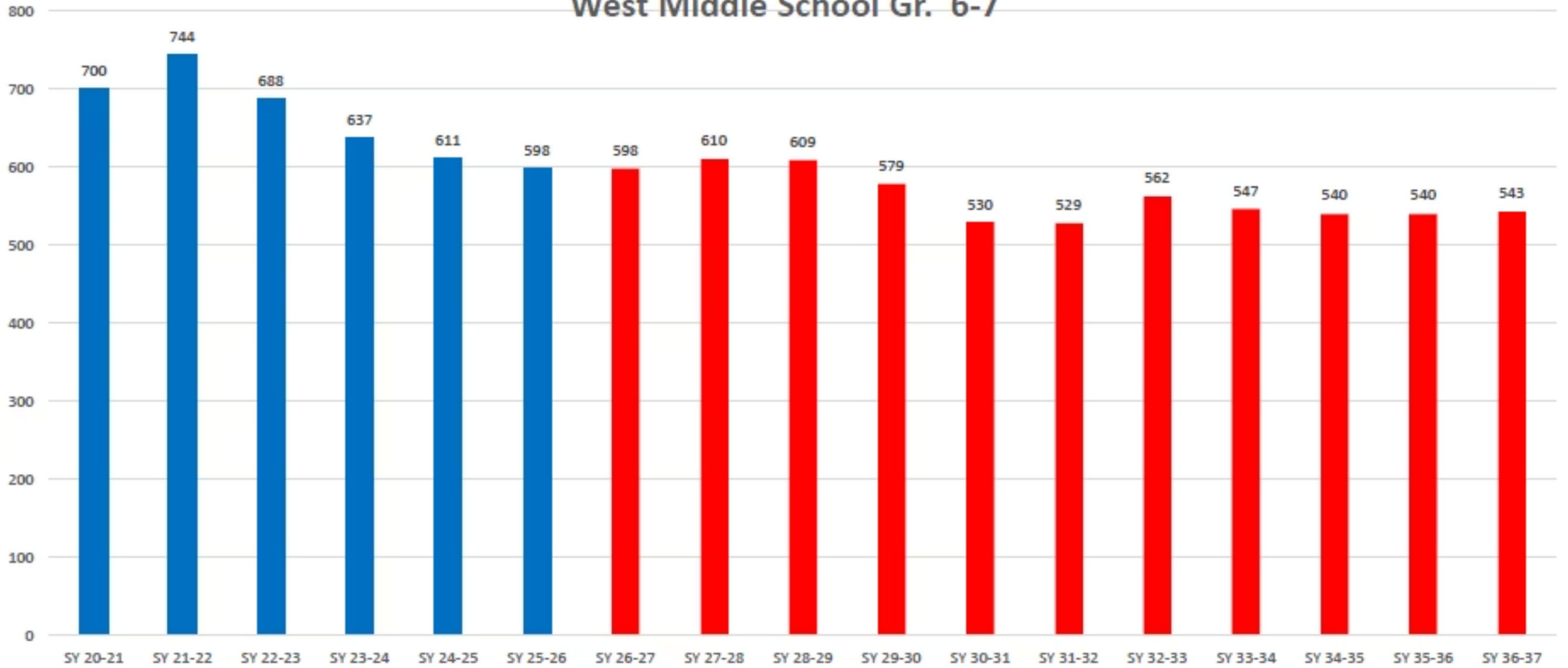
- Year-over-year enrollment by site and grade level
- Live births in Kay County
- Historical patterns informing future projections
- Capacity utilization analysis



# Enrollment Forecast



## West Middle School Gr. 6-7





# Continuous Strategic Improvement

## Part I: ENGAGE

Timelines for deliverables - Staff, Student, Parent, Community Surveys

## Part II: PLAN

Develop Goal Areas, Objectives, SMART measures

# Today's Kickoff Meeting

## Partnership Launch

Formal kickoff with OU and OSSBA representatives (today)

## Team Formation

Identify and assign Ponca City stakeholders to the community - 30 people (by March 11th)

1

2

3

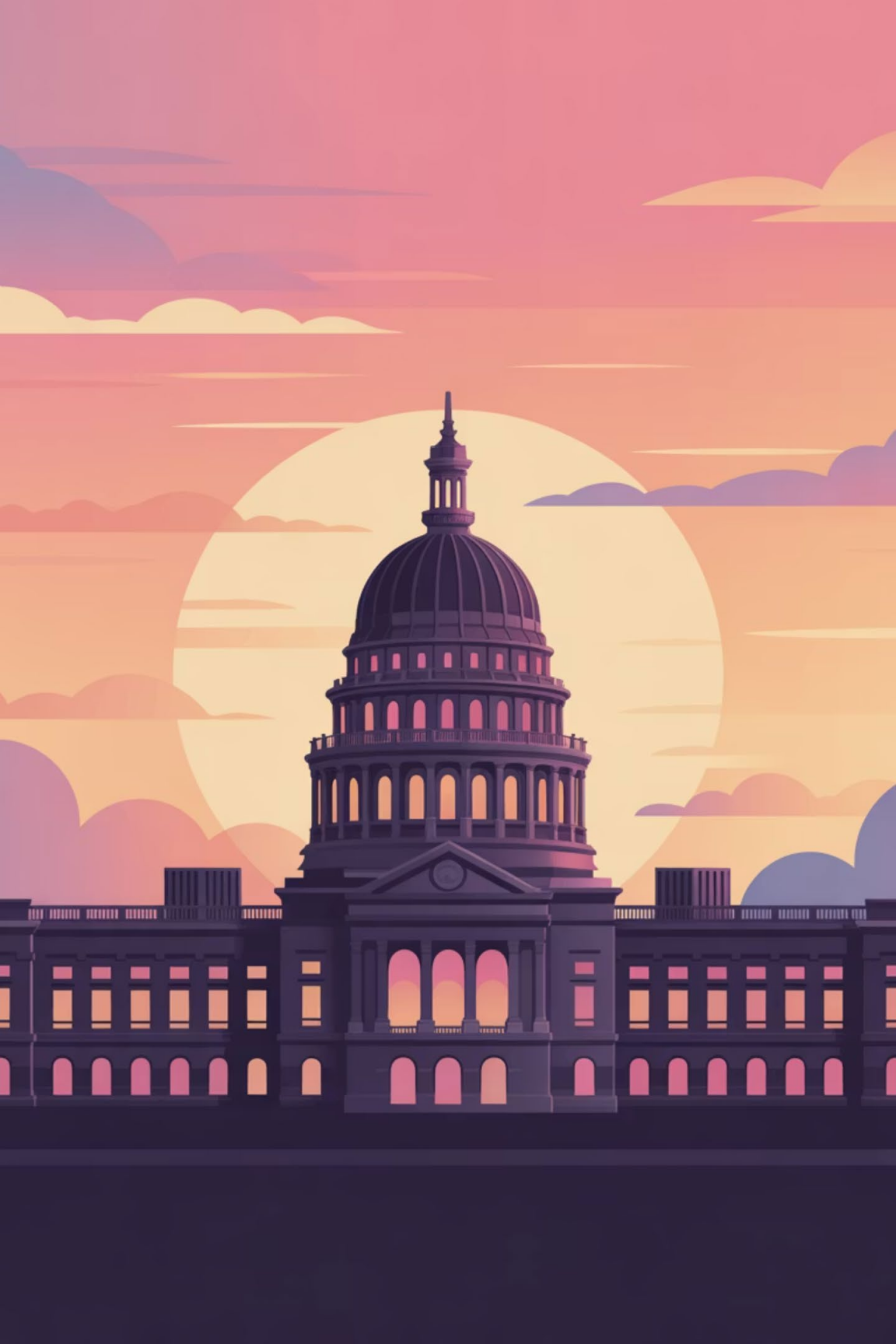
4

Surveys start this week and go through March 6th

## Roadmap Development

Map strategic pathway to comprehensive facility and strategic plan (May 12/July 28th - 29th/Sept 21st)

📄 Goal: November 9th - Board ready plan - November 10th communicating with Principals



# State Funding Landscape

## Legislative Session Implications

The upcoming legislative session presents opportunities and potential challenges for our district. State budget decisions will directly impact our system's capacity.

### Property Tax reform

Property taxes (Ad Valorem) are the largest source of local funding for schools.  
About \$16 - \$20million for PCPS

### Literacy

Effective reading instruction, training teachers/principals, long term commitments,  
Science of Reading

### Teacher Recruitment/Retention

Quality teachers, Sign on bonuses, Special education recruitment,

# Legislative Priorities & Action Items

## Advocacy Focus Areas

Permanent ban for cell phones

Extending OHLAP for all school personnel

School Resource Officer/Safety funding

Spending caps on school funds

Graduation requirement changes (computer science)

Centers of Excellence

Tax credit reform

414/398



📅 **Next Step:** Schedule district legislative advocacy day for February 2024

**Ponca City Public Schools**  
**Regular Board of Education Meeting**  
**Administration Center, Board Room, 613 East Grand Ave., Ponca City, Oklahoma 74601**  
**Monday, January 12, 2026 at 5:59 PM**

**NOTICE OF MEETING**

Prior to December 15 of the last calendar year, the date, time and place of the regular meetings were filed in the Office of the County Clerk of Kay County, Oklahoma. At least twenty-four (24) hours prior to this meeting, excluding Saturdays, Sundays, and holidays, notice of the date, time, place and agenda of this meeting was posted in prominent public view at the Ponca City Administration Building, 613 East Grand Avenue and on the school district's website located at www.pcps.us (posted on January 8, at 2:00 p.m.)

**1. CALL TO ORDER**

Attendance Taken at 5:59 PM.

Robin Riley: Present  
Anna Roland: Present  
Judy Throop: Present  
Joe Vaden: Present  
Nancy Zimmerschied: Present

1.1. **Call Meeting to Order** 5:59 pm *(President)*

1.2. **Flag Salute**

1.3. **Roll Call** *(Minutes Clerk of the Board)*

**2. PRESENTATIONS AND RECOGNITIONS**

2.1. **Special Presentation to the Board Members in Appreciation for Their Years of Service to the Children of Ponca City**

2.2. **Presentation of the Employee of the Month and Friend of Education Awards**

The President of the Board will preside over presenting the January Employee of the Month and Friend of Education Awards to the following employees:

**Certified Employee of the Month - Angela Shelton**

Counselor, Roosevelt Elementary

**Support Employee of the Month - Jen Cargill**

Payroll Specialist Assistant, BOE

**Friend of Education - Allison Miller**

Community Health Foundation

**3. PUBLIC COMMENT**

3.1. **Comments From the Public**

The Ponca City Public School Board of Education recognizes the value of school governance

of public comment on educational issues and the importance of involving members of the public in board meetings. The board has established guidelines to govern public participation in board meetings necessary to conduct its meetings and to maintain order. After checking in with the board clerk, individuals or groups wishing to speak during the public comment period must provide the following information in writing, in order to speak before the board:

- Name and address of the individual
- The agenda action item(s) the individual wishes to address
- The organization the individual represents or is affiliated with, if applicable

Anyone who would like to speak to the board during the public comment period of the meeting must check in with the board clerk at least 15 minutes prior to the start of the board meeting. There will be a form available they will need to fill out and return to the board clerk before they can be heard by the board.

Participants must be recognized by the president or other presiding officer and must preface their comments with an announcement of their name and group affiliation, if applicable. Comments by the speaker must relate to an item on the meeting agenda. Generally, participants shall be limited to comments of a maximum of three (3) minute duration unless altered by the presiding officer, with the approval of the board. All public comments during any one regular meeting shall be limited to no more than fifteen (15) minutes. No participant may speak more than once during a single meeting. All statements shall be directed to the presiding officer; no participant may address or question board members individually.

For more information regarding Speaking Privileges of the Public, please refer to Board Policy 1.3-6.0 Speaking Privileges of the Public, which is available at the board meeting, or in the board policy manual located on the district website, [www.pcps.us](http://www.pcps.us), under Board of Education.

#### **4. PRESENTATION FROM JENKINS & KEMPER ON ANNUAL AUDIT REPORT**

##### **4.1. Consider and Take Action on Receiving Annual Audit Report from Jenkins & Kemper**

#### **5. REPORTS WITH POTENTIAL BOARD DISCUSSION** *(Erika Johnson, Executive Director of Finance)*

##### **5.1. OASC State Convention Financial Update**

##### **5.2. Bond Project Financial Review**

#### **6. SUPERINTENDENT'S REPORT WITH POTENTIAL BOARD DISCUSSION**

##### **6.1. District Updates**

#### **7. CONSENT AGENDA**

Motion required for the approval of the Consent Agenda as printed or as amended. Board members may, however, call for a separate vote on any or all items listed on the Consent Agenda.

Motion to approve the Consent Agenda as printed or as amended Items 7.1 thru 7.24. Board members may, however, call for a separate vote on any or all items listed on the Consent Agenda. This motion, made by Nancy Zimmerschied and seconded by Judy Throop, passed.

Robin Riley: Yea  
Anna Roland: Yea  
Judy Throop: Yea  
Joe Vaden: Yea  
Nancy Zimmerschied: Yea  
Yea: 5, Nay: 0

**7.1. Approval of the Minutes from the December 8, 2025, Board Meeting**

**7.2. Approval of the Budget Analysis Reports**

**7.3. Approval of the FY26 Budget Amendments**

**7.4. Approval of the FY26 Bond Fund Reports**

**7.5. Approval of the FY26 Change Order Listings as of January 8, 2026, for Funds 11, 21, 30, and 81**

**7.6. Approval of FY26 General Fund 11 Encumbrances #960-#1013 in the amount of \$116,958.79**

**7.7. Approval of FY26 Building Fund 21 Encumbrances #139-#161 in the amount of \$84,187.30**

**7.8. Approval of FY26 Child Nutrition Fund 22 Encumbrances #90-#93 in the amount of \$100,163.75**

**7.9. Approval of FY26 Bond 34 Encumbrance #8 in the amount of \$3,700.00**

**7.10. Approval of FY26 Gifts and Endowment Fund 81 Encumbrance #139 in the amount of \$500.00**

**7.11. Approval of Booster Club Fundraiser Requests**

**7.12. Approval of Activity Fund Reports/Requests**

**7.13. Approval of Treasurer's Reports**

**7.14. Ratification & Approval of Payrolls**

**7.15. Approval of a renewal agreement with CDW Education/CDW Amplified for Education, effective February 1, 2026, through January 31, 2028, for Chrome Gopher Premium software, which provides district-wide tools to support efficient management of Google accounts for teachers, staff, and students. The total cost is \$3,700.00 and will come from Bond 34.**

**7.16. Approval of an agreement with the E.W. Marland Estate for rental of the facility to host the Ponca City High School Prom on April 18, 2026. Total cost is \$1,750.00 and will come from the Activity Fund.**

**7.17. Approval of a contract with Kirkhart Entertainment to provide a DJ for the prom on April 18, 2026. Total cost is \$1,500.00 and will come from the Activity Fund.**

7.18. **Approval of a ratification of an agreement between Northwestern Oklahoma State University (NWOSU) and Ponca City Public Schools (PCPS), effective October 16, 2024, through October 15, 2027, wherein PCPS agrees to provide the authorization, supervision, and instruction of NWOSU candidates completing the University's nursing education program. This would include activities such as observation, job-shadowing, and other activities as approved by both NWOSU and PCPS. This is year two of a three-year agreement. There is no cost to the district.**

7.19. **Approval of an agreement with the Oklahoma Department of Human Services (ODHS), effective for the 2025-2026 school year. Ponca City Public Schools (PCPS) participates in the USDA/National School Breakfast and Lunch Program and receives a meal assistance allocation for commodities based on the number of reimbursable meals served. The commodity allocation or credit is handled by the ODHS who assesses a storage/handling fee based on the total dollars allocated for commodities. PCPS also pays the commodity storage fee for St. Mary's since they contract with PCPS to provide meals. This is an annual amount paid for warehousing and delivering the commodities. The total cost is \$6,178.94 and will be paid from Fund 22.**

7.20. **Approval of a contract with Photography By Jes to provide photos at the Promenade and inside photo booth on April 18, 2026. The total cost is \$450.00 and will come from the Activity Fund.**

7.21. **Approval of a quote from Photography By Jes, dated June 19, 2025, for session fees to take head shots for principals and Executive Directors on January 15, 2026. The total cost for 40 employees is \$2,250.00 and will come from the General Fund.**

7.22. **Approval of a quote from RTI Scheduler, effective January 1, 2026, through June 30, 2026, for a software license for 1,300 students at the Ponca City High School. The quote also includes virtual training and consulting. The total cost is \$2,300.00 and will come from the Gap Grant 515.**

7.23. **Approval of a quote from XtraMath, effective January 1, 2026, through May 31, 2026, for an XtraMath premium license for math fact fluency for West Middle School. This quote includes unlimited teacher and student access. The total cost is \$250.00 and will come from Title I funds.**

7.24. **Approval to rescind the contract originally approved on June 9, 2025, between the District and Angela Montenegro, effective December 31, 2025, due to a change in the contractor's legal entity and federal tax identification number (EIN).**

## **8. ACTION ITEMS (MOTION REQUIRED)**

### **8.1. Consider and Take Action to Approve the District's Annual Application to the Oklahoma State Department of Education for Designation of Federal Program Authorized Representatives**

Motion to Approve the District's Annual Application to the Oklahoma State Department of Education for Designation of Federal Program Authorized Representatives. This motion, made by Anna Roland and seconded by Judy Throop, passed.

Robin Riley:                 Yea

Anna Roland:                Yea

Judy Throop: Yea  
Joe Vaden: Yea  
Nancy Zimmerschied: Yea  
Yea: 5, Nay: 0

**8.2. Consider and Take Action on the following Contracts/Agreements:**

**8.2.A. An agreement with Angela's Academic Assessment (formerly doing business as Angela Montenegro, NCSP, M.S., Ed.S. , M.S.) for school psychology services**

Motion to Approve the following Contracts/Agreement: 8.2.A This motion, made by Judy Throop and seconded by Anna Roland, passed.

Robin Riley: Yea  
Anna Roland: Yea  
Judy Throop: Yea  
Joe Vaden: Yea  
Nancy Zimmerschied: Yea  
Yea: 5, Nay: 0

**8.2.B. A Statement of Understanding between Oklahoma State School Boards Association (OSSBA) and Ponca City Public Schools (PCPS), effective January 12, 2026, through December 31, 2026, for Continuous Strategic Improvement (CSI) services**

Motion to postpone item 8.2.B for more information. This motion made by Joe Vaden and Seconded by Robin Riley, failed.

Robin Riley: Yea  
Anna Roland: Nay  
Judy Throop: Nay  
Joe Vaden: Yea  
Nancy Zimmerschied: Nay  
Yea: 2, Nay: 3

Motion to Approve 8.2.B. A Statement of Understanding between Oklahoma State School Boards Association (OSSBA) and Ponca City Public Schools (PCPS), effective January 12, 2026, through December 31, 2026, for Continuous Strategic Improvement (CSI) services. This motion, made by Anna Roland and seconded by Nancy Zimmerschied, passed.

Robin Riley: Nay  
Anna Roland: Yea  
Judy Throop: Yea  
Joe Vaden: Nay  
Nancy Zimmerschied: Yea  
Yea: 3, Nay: 2

**8.2.C. An agreement with Oklahoma State School Boards Association (OSSBA), effective January 12, 2026, through December 31, 2026, to provide Facility Planning Services for the District**

Motion to Approve 8.2.C. An agreement with Oklahoma State School Boards Association (OSSBA), effective January 12, 2026, through December 31, 2026, to provide Facility Planning Services for the District. This motion, made by Judy Throop and seconded by Nancy Zimmerschied, passed.

Robin Riley: Nay  
Anna Roland: Yea  
Judy Throop: Yea  
Joe Vaden: Nay  
Nancy Zimmerschied: Yea  
Yea: 3, Nay: 2

**8.3. Motion and Vote to Convene in Executive Session for the Following Purposes: to Discuss the Possible Termination, Reassignment, Resignation, and Employment of Personnel on the Attached Detailed Personnel Report [Authority for Executive Session: 25 O.S. Section 307 (B)(1)]; to Discuss the Resignation of Elizabeth Post Pursuant to OKLA. STAT. tit. 25, § 307 (B)(1) & (7); to Discuss the Superintendent of Schools' Contract [Authority for Executive Session: 25 O.S. Section 307 (B)(1)]; and to Discuss Employment of Superintendent [Authority for Executive Session: 25 O.S. Section 307 (B)(1)]**

Motion and Vote to Convene in Executive Session for the Following Purposes: to Discuss the Possible Termination, Reassignment, Resignation, and Employment of Personnel on the Attached Detailed Personnel Report [Authority for Executive Session: 25 O.S. Section 307 (B)(1)]; to Discuss the Resignation of Elizabeth Post Pursuant to OKLA. STAT. tit. 25, § 307 (B)(1) & (7); to Discuss the Superintendent of Schools' Contract [Authority for Executive Session: 25 O.S. Section 307 (B)(1)]; and to Discuss Employment of Superintendent [Authority for Executive Session: 25 O.S. Section 307 (B)(1)]. This motion, made by Anna Roland and seconded by Judy Throop, passed.

Robin Riley: Yea  
Anna Roland: Yea  
Judy Throop: Yea  
Joe Vaden: Yea  
Nancy Zimmerschied: Yea  
Yea: 5, Nay: 0

**Executive Session Convened at 7:30pm**

**8.4. Return to Open Session at 9:14pm**

**8.5. Recital by Board President that Minutes of Executive Session Were Kept by the Board Minutes Clerk and Will Remain Confidential**

**8.6. Discussion and Vote to Either Approve the Resignation Agreement with Elizabeth Post and Accept her Resignation or Not Approve the Resignation Agreement with Elizabeth Post and Not Accept Her Resignation**

Motion to Either Approve the Resignation Agreement with Elizabeth Post and Accept her Resignation or Not Approve the Resignation Agreement with Elizabeth Post and Not Accept Her Resignation. Motion to accept her Resignation made by Joe Vaden and seconded by Judy Throop, passed.

Robin Riley: Yea  
Anna Roland: Yea  
Judy Throop: Yea  
Joe Vaden: Yea  
Nancy Zimmerschied: Yea  
Yea: 5, Nay: 0

**8.7. Consider and Take Action on Ratification/Renewal of the Contract or New Contract for the Superintendent of Schools**

No Action Taken

**8.8. Consider and Take Action on Recommendations for Termination, Reassignment, Resignation, and Employment of Personnel**

Motion to approve the Recommendations for Termination, reassignment, Resignation, and Employment of Personnel made by Anna Roland, Seconded by Joe Vaden, passed.

Robin Riley: Yea  
Anna Roland: Yea  
Judy Throop: Yea  
Joe Vaden: Yea  
Nancy Zimmerschied: Yea  
Yea: 5, Nay: 0

**9. NEW BUSINESS**

**10. ADJOURNMENT at 9:15pm.**

---

Erika Johnson  
Minutes Clerk of the Board

APPROVED DATE:

---

President, Board of Education

## Encumbrance Register

Options: Year: 2025-2026, Date Range: 7/1/2025 - 6/30/2026, PO Range: 1014 - 1175, Fund(s): GENERAL FUND

Fund	PO No	Date	Vendor No	Vendor	Description	Amount
11	1014	01/09/2026	30544	CITY OF PONCA CITY	UTILITIES/WATER/TRASH/SEWA GE FOR DISTRICT #2	110,000.00
11	1015	01/09/2026	30544	CITY OF PONCA CITY	UTILITIES/ELECTRIC FOR DISTRICT #2	390,000.00
11	1016	01/09/2026	12331	PONCA CITY SCHOOLS/COPY CENTER	TROUT/INSTR/8 cases of paper	350.00
11	1017	01/09/2026	68773	SPORTS SURFACE MANAGEMENT, LLC	Ath/Baseball Turf Repair	1,000.00
11	1018	01/12/2026	68723	SYLOGISTED, INC	HR/DISTRICT FORMS W-2/1095-C FORMS	1,900.00
11	1019	01/12/2026	87716	SHELLI JACOBS	WEST/INSTR/TRAVEL TO IDEA-B JAN 16	165.00
11	1020	01/12/2026	11852	PROSPERITY BANK 46514	WCA/INST/CLASSROOM SUPPLIES	1,500.00
11	1021	01/13/2026	10257	BSN SPORTS,LLC	Ath/Football Junior High Reversible Jerseys x 100	7,297.50
11	1022	01/13/2026	35007	ALL AMERICAN SPORTS CORP	Ath/Football Helmet Reconditioning	3,817.20
11	1023	01/13/2026	30445	OK DEPT. OF CAREER & TECHNOLOGY	HS/BLUE/MINI CONF REGIST/JAN	50.00
11	1024	01/13/2026	88711	JACKSON BLUE	HS/STEM/MINI CONF MILEAGE REIMB	147.90
11	1025	01/13/2026	11852	PROSPERITY BANK 46514	HS/GT/AP LIT GUIDE/NONFICTION/ACT GUIDES	260.00
11	1026	01/13/2026	11852	PROSPERITY BANK 46514	HS/STEM/NINTENDO SWITCH FAMILY MEMBERSHIP	34.99
11	1027	01/13/2026	11852	PROSPERITY BANK 46514	EAST/FACS/CLSSRM ITEMS/FOOD/FABRIC/WAL-MART	1,000.00
11	1028	01/13/2026	11852	PROSPERITY BANK 46514	EAST/FACS/SEWING SUPPLIES/HOBBY LOBBY	300.00
11	1029	01/13/2026	11852	PROSPERITY BANK 46514	WEST/INST/SUPPLIES	1,000.00
11	1030	01/13/2026	84271	VINA J GOWDY	CARL PERKINS/TRANSPORATION/ISTE	350.00
11	1031	01/13/2026	11852	PROSPERITY BANK 46514	CURR/SUPPLIES	400.00
11	1032	01/13/2026	11875	PROSPERITY BANK-HOLIDAY INN	SPED/HOTEL/AUTISM TRNG	150.00
11	1033	01/13/2026	87956	BARBARA SANDERS	SPED/TRAVEL/AUTISM TRNG	247.90
11	1034	01/13/2026	85562	AMY M SWARTZ	SPED/TRAVEL/SPED LAW CONFERENCE	147.90
11	1036	01/13/2026	67827	PROSPERITY BANK-WALMART	TITLE IV/PE SUPPLIES/FL	100.40
11	1037	01/13/2026	21021	THE PROPHET CORPORATION	TITLE IV/PE SUPPLIES/FL	168.29
11	1038	01/13/2026	10810	TEACHERS' RETIREMENT SYSTEM	GF/TRS PENALTIES	1,000.00
11	1039	01/13/2026	69067	JOHN A MARSHALL CO	CARL PERKINS/SOUNDPROOF BOOTH/HS	29,177.87
11	1040	01/13/2026	38563	B&H FOTO & ELECTRONICS CORP	CARL PERKINS/SOUND BOOTH CAMERAS & LIGHTING/HS	16,769.32
11	1041	01/15/2026	11852	PROSPERITY BANK 46514	WCA/INST/REG FEE FOR 2026 MIDWEST ACT SUMMIT	170.00
11	1042	01/15/2026	83238	KATRINA HEIDLAGE	WCA/INST/TRAVEL REIMB	190.00
11	1043	01/15/2026	83113	KARLA R STREETER	WCA/INSTR/REIMB/ALT ED CONF	124.70

## Encumbrance Register

Options: Year: 2025-2026, Date Range: 7/1/2025 - 6/30/2026, PO Range: 1014 - 1175, Fund(s): GENERAL FUND

Fund	PO No	Date	Vendor No	Vendor	Description	Amount
11	1044	01/15/2026	11852	PROSPERITY BANK 46514	WCA/LIBRARY/BOOKS	670.00
11	1045	01/15/2026	11852	PROSPERITY BANK 46514	BUS OFC/REGIST FOR OSSBA ACADEMY	900.00
11	1046	01/15/2026	20932	OSSBA, INC	SUP/REGIST/SPRING CONFERENCES	300.00
11	1047	01/15/2026	20932	OSSBA, INC	DIST/FACILITY PLANNING SERVICES	43,418.00
11	1048	01/15/2026	20932	OSSBA, INC	DIST/CONTIN STRATEGIC IMPROVEMENT SERVICES	52,000.00
11	1049	01/15/2026	11852	PROSPERITY BANK 46514	HS/GT/LAB SUPPLIES FOR PRE-AP CHEMISTRY	150.00
11	1050	01/15/2026	11852	PROSPERITY BANK 46514	HS/BMITE/ALBEE/STREAM DECK/STARTER KIT/MOUSE	1,765.16
11	1051	01/15/2026	11852	PROSPERITY BANK 46514	HS/BMITE/ALBEE/80" POSTER SCREEN/PROJECTOR	4,863.00
11	1052	01/15/2026	45445	OKLAHOMA BPA	EAST/BITE/REGIST/MID LEVEL DAY/FEB 20	85.00
11	1053	01/15/2026	40464	OKLAHOMA FCCLA	WEST/FACS/FCCLA REGISTRATION	30.00
11	1054	01/15/2026	99070	TRANSPORTATION DEPARTMENT	WEST/FACS/TRANSPORTATION	225.00
11	1055	01/15/2026	35638	GALE/CENGAGE GROUP	HS/Library/Gale Ebooks Hosting Fee	50.00
11	1056	01/15/2026	11852	PROSPERITY BANK 46514	HS/BMITE/Graham/Ink, Paper, Tech, Office Supplies	2,000.00
11	1057	01/15/2026	45445	OKLAHOMA BPA	HS/BMITE/Parr/BPA State Leadershipt Advisor Reg	225.00
11	1058	01/15/2026	67544	JOURNEYED.COM, INC	HS/BMITE/Albee/Adobe K-12 License	833.33
11	1059	01/15/2026	67544	JOURNEYED.COM, INC	HS/BMITE/Graham/Adobe K-12 License	833.34
11	1060	01/15/2026	67544	JOURNEYED.COM, INC	HS/BMITE/Parr/Adobe K-12 License	833.33
11	1061	01/15/2026	86428	SEAN D TAGLIALATELA	HS/INSTRUC/Mileage Reimb Yukon RTI Observ	222.00
11	1062	01/15/2026	11871	PROSPERITY BANK-AMAZON	TITLE III/ROLLING CART/DISTRICT	67.98
11	1063	01/15/2026	11912	PROSPERITY BANK-HILTON	SPED/HOTEL/SPED LAW CONFERENCE	150.00
11	1064	01/15/2026	69068	ROBOSTORE LLC	LOTTERY GRANT/AI ROBOTIC QUADRUPLED	9,660.00
11	1065	01/15/2026	99070	TRANSPORTATION DEPARTMENT	SPED/TRANSPORTATION/MTSS WINTER CONF.	336.00
11	1066	01/19/2026	33639	OKLAHOMA MUSIC EDUCATORS ASSN	LINCOLN/INSTRU/MUSICCONFER ENCE	190.00
11	1067	01/19/2026	11852	PROSPERITY BANK 46514	LINCOLN/INSTRU/LODGING	328.97
11	1068	01/19/2026	88549	SARAH HUNSUCKER	LINCOLN/INSTRU/MEALSMILEAG E	290.65
11	1069	01/19/2026	11852	PROSPERITY BANK 46514	LIBERTY/INST/CLASSROOM SUPPLIES	500.00
11	1070	01/19/2026	36673	HERTZBERG-NEW METHOD, INC	Garfield/Library /Books	834.12
11	1071	01/19/2026	69069	PROSPERITY BANK-OKANA RESORT	SPED/HOTEL/WISL CONF	330.00

## Encumbrance Register

Options: Year: 2025-2026, Date Range: 7/1/2025 - 6/30/2026, PO Range: 1014 - 1175, Fund(s): GENERAL FUND

Fund	PO No	Date	Vendor No	Vendor	Description	Amount
11	1072	01/19/2026	12292	PROSPERITY BANK-OMNI	SPED/HOTEL/CCOSA CONFERENCE	660.00
11	1073	01/20/2026	31160	COOP COUNCIL FOR OK SCHOOL ADMIN	SPED/REGISTRATION/CCOSA	950.00
11	1074	01/20/2026	11852	PROSPERITY BANK 46514	HS/BMITE/A. Monks/Printer Paper	500.00
11	1075	01/20/2026	12130	FLINN SCIENTIFIC, INC	HS/Instruc/Science/Magnetic Powder Applicator	356.29
11	1076	01/21/2026	10132	MERRIFIELD OFFICE AND SCHOOL SUPPLY	LIBERTY/TITLE 1/CARDSTOCK	300.00
11	1077	01/21/2026	12292	PROSPERITY BANK-OMNI	LIBERTY/INST/HOTEL CCOSA CONFERENCE	700.00
11	1078	01/21/2026	11852	PROSPERITY BANK 46514	LIBERTY/INST/STORAGE CABINET FOR SUPPLIES	150.00
11	1079	01/21/2026	31160	COOP COUNCIL FOR OK SCHOOL ADMIN	LIBERTY/INST/REGISTRATION	575.00
11	1080	01/21/2026	31160	COOP COUNCIL FOR OK SCHOOL ADMIN	OPER/CCOSA TRAINING FOR LARIN	575.00
11	1081	01/21/2026	12292	PROSPERITY BANK-OMNI	OPER/ HOTEL FOR LARIN AT CCOSA	500.00
11	1082	01/21/2026	20932	OSSBA, INC	OPER/TRAINING FOR LARIN DAVIS	500.00
11	1083	01/21/2026	11852	PROSPERITY BANK 46514	NYCP/OKCTHUNDER/STEMNIGHT	1,600.00
11	1084	01/21/2026	99070	TRANSPORTATION DEPARTMENT	NYCP/TRANSP/OKCTHUNDER	1,000.00
11	1085	01/21/2026	11852	PROSPERITY BANK 46514	NYCP/BRICKOPOLIS/FOOD/DINN ER	800.00
11	1086	01/21/2026	10992	LAMINATION DEPOT, INC	UNION/TITLE 1/LAMINATION ROLLS	465.00
11	1087	01/21/2026	30074	DEMCO, INC.	WEST/LIBRARY/SUPPLIES	176.82
11	1088	01/21/2026	11852	PROSPERITY BANK 46514	WEST/INST/SUPPLIES	1,000.00
11	1090	01/21/2026	11852	PROSPERITY BANK 46514	WEST/INST/OFFICE CHAIR	150.00
11	1091	01/21/2026	83082	LAURA J GLOWACKI	GF/INSTRU/OUT OF DISTRICT TRAVEL	290.00
11	1092	01/21/2026	12292	PROSPERITY BANK-OMNI	CURR/HOTEL/CCOSA LEADERSHIP	554.01
11	1093	01/21/2026	68398	PROSPERITY BANK-CCOSA	CURR/REGISTRATION/CCOSA LEADERSHIP	1,150.00
11	1094	01/21/2026	83995	TERI A VOGELE	CURR/TRAVEL/CCOSA	347.25
11	1095	01/21/2026	12331	PONCA CITY SCHOOLS/COPY CENTER	TROUT/TITLE 1/PAPER FOR PARENT INVOLVEMENT	987.85
11	1096	01/21/2026	11871	PROSPERITY BANK-AMAZON	TROUT/TITLE1/HEAD PHONES/STORAGE	3,880.45
11	1097	01/21/2026	68667	PROSPERITY BANK-TEACHERS PAY TE	TROUT/TITLE 1/READING AND MATH CENTER SUPPLIES	500.00
11	1098	01/21/2026	12449	PROSPERITY BANK-REALLY GOOD STUFF	TROUT/TITLE1/READING AND MATH CENTER SUPPLIES	500.00
11	1099	01/21/2026	35318	PRIME ED PRODUCTS, LLC	TROUT/TITLE1/READING AND MATH CENTER SUPPLIES	2,500.00
11	1100	01/21/2026	10298	FROG PUBLICATIONS, INC	TROUT/TITLE1/READING AND MATH CENTER SUPPLIES	500.00

## Encumbrance Register

Options: Year: 2025-2026, Date Range: 7/1/2025 - 6/30/2026, PO Range: 1014 - 1175, Fund(s): GENERAL FUND

Fund	PO No	Date	Vendor No	Vendor	Description	Amount
11	1101	01/21/2026	31787	LAKESHORE PARENT, LLC	TROUT/TITLE 1/READING AND MATH CENTER SUPPLIES	1,000.00
11	1102	01/21/2026	99999	COUNTY OF KAY/PONCA CITY PUBLIC SCH	REIMB DIST FOR STIPEND PD	277.05
11	1103	01/21/2026	67571	REDLANDS OFFICE SOLUTIONS, LLC	LINCOLN/INSTRU/CLASSROOM	1,288.62
11	1104	01/21/2026	67571	REDLANDS OFFICE SOLUTIONS, LLC	LINCOLN/TITLE1/HEADPHONES	1,471.22
11	1105	01/21/2026	68808	KLINGERS COLLISION CENTER, LLC	TRANSP/VEHICLE REPAIR/2022 CHEV SUB/1092	4,588.69
11	1106	01/21/2026	11852	PROSPERITY BANK 46514	BUS OFC/CONCERT HALL PHOTO	250.00
11	1107	01/21/2026	11852	PROSPERITY BANK 46514	TECH/SSL and PCPS Domain Renewal	300.00
11	1108	01/21/2026	68104	MCGRAW-HILL LLC	UNION/TITLE 1/SRA READING LAB KITS	6,000.00
11	1109	01/21/2026	68622	MARENEM, INC	UNION/TITLE 1/SECRET STORIES KITS	675.00
11	1110	01/21/2026	11871	PROSPERITY BANK-AMAZON	UNION/TITLE 1/MATH FLASHCARDS	665.00
11	1111	01/21/2026	11852	PROSPERITY BANK 46514	WEST/TECH ED/CLASSROOM SUPPLIES	2,000.00
11	1112	01/21/2026	99070	TRANSPORTATION DEPARTMENT	HS/Esports/Bixby Tournament 2/2/26	565.00
11	1113	01/21/2026	11852	PROSPERITY BANK 46514	HS/INSTRUC/Office Supplies, Books, Folders, Etc	4,500.00
11	1114	01/22/2026	68398	PROSPERITY BANK-CCOSA	ROOS/TITLE 1/REGISTRATION/CCOSA SUMMER CONFERENCE	575.00
11	1115	01/22/2026	12292	PROSPERITY BANK-OMNI	ROOS/TITILE 1/LODGING/CCOSA LEADERSHIP CONFERENCE	822.79
11	1116	01/22/2026	88124	JERA KIESPERT	ROOS/TITLE 1/CCOSA/PD/TRAVEL EXPENSES	400.00
11	1117	01/23/2026	68208	SCHOOL SPECIALTY, LLC	LINCOLN/TITLE1/STUDENTSUPPLIES	6,183.93
11	1118	01/23/2026	11852	PROSPERITY BANK 46514	HS/INSTRUC/Plaud Note Annual Pro Plan	100.00
11	1119	01/23/2026	11852	PROSPERITY BANK 46514	HS/FACS/Buller/Items for Class Assignments	500.00
11	1120	01/27/2026	31019	READ NATURALLY, INC	LINCOLN/TITLE1/READING	5,568.20
11	1121	01/27/2026	99070	TRANSPORTATION DEPARTMENT	EAST/GT/TRANSP TO IFLY STEM	459.00
11	1122	01/28/2026	99070	TRANSPORTATION DEPARTMENT	EAST/BITE/TRANSP TO STILLWATER/TULSA	688.50
11	1123	01/28/2026	31160	COOP COUNCIL FOR OK SCHOOL ADMIN	HR/JENNIFER DYE LEADERSHIP CONFERENCE	575.00
11	1124	01/28/2026	88558	CLARK CRAWFORD	TITLE II/TRAVEL/RTI AT WORK INSTITUTE	150.00
11	1125	01/28/2026	68208	SCHOOL SPECIALTY, LLC	TITLE IV/ART SUPPLIES/MILLER/HS	1,664.64
11	1126	01/28/2026	68208	SCHOOL SPECIALTY, LLC	TITLE IV/ART SUPPLIES/MORGAN/HS	1,747.96
11	1127	01/28/2026	11871	PROSPERITY BANK-AMAZON	CURR/BOOKS/MATH	1,039.22

## Encumbrance Register

Options: Year: 2025-2026, Date Range: 7/1/2025 - 6/30/2026, PO Range: 1014 - 1175, Fund(s): GENERAL FUND

Fund	PO No	Date	Vendor No	Vendor	Description	Amount
11	1128	01/28/2026	68710	MINDWORKS INNOVATIONS, INC	CURR/LOVE AND LOGIC EDUCATOR BUNDLE	495.00
11	1129	01/28/2026	11852	PROSPERITY BANK 46514	WEST/INST/SUPPLIES	2,000.00
11	1130	01/28/2026	11138	PONCA CITY SCHOOLS/COPY CENTER	WEST/INST/INSTRUCTIONAL COPIES	1,000.00
11	1131	01/28/2026	10074	BRACE BOOKS & MORE, INC.	WEST/TITLE 1/BOOKS	500.00
11	1132	01/29/2026	37076	RENAISSANCE LEARNING	ROOS/INSTR/MATH MANIPULATIVES/SUBSCRIPTION	450.00
11	1133	01/29/2026	68398	PROSPERITY BANK-CCOSA	ROOS/INST/REGISTRATION/CCOSA TRAINING	700.00
11	1134	01/29/2026	99070	TRANSPORTATION DEPARTMENT	ROOS/TRANS/ TRAVEL /CCOSA TRAINING	325.00
11	1135	01/29/2026	99070	TRANSPORTATION DEPARTMENT	HS/VOCAL MUSIC/ TRANS FOR FY 26	2,425.50
11	1136	01/29/2026	32415	UNIVERSITY OF CENTRAL OKLAHOMA	HR/UCO NSSLHA EMPLOYMENT EXPO	100.00
11	1137	01/29/2026	25923	GALAXIE BUSINESS EQUIP. INC.	HR/COPIER MAINT 2025-26	1,000.00
11	1138	01/29/2026	11871	PROSPERITY BANK-AMAZON	UNION/TITLE 1/FLASHCARD SUPPLIES	660.00
11	1139	01/29/2026	11138	PONCA CITY SCHOOLS/COPY CENTER	WEST/TITLE 1/INSTRUCTIONAL COPIES	2,000.00
11	1140	01/29/2026	25923	GALAXIE BUSINESS EQUIP. INC.	CURR/COPIERS-PRINTERS/BOE	1,500.00
11	1141	01/30/2026	11852	PROSPERITY BANK 46514	TRANS/BUS/OFFICE/MISC SUPPLIES	8,000.00
11	1142	01/30/2026	12331	PONCA CITY SCHOOLS/COPY CENTER	WOOD/Title 1/Parent involvement paper	187.50
11	1143	01/30/2026	20863	A+ PRINTING LLC	HR/ENVELOPES/CARDS/FORMS	1,000.00
11	1144	01/30/2026	69074	NELLIE ZOTIGH	TITLEVI/VISITOR/BEADED CRAFT/WCA	100.00
11	1145	01/30/2026	83875	KARA B ANDERSON	UNION/TITLE 1/INSTRUCTIONAL COACH VISIT MILEAGE	110.00
11	1146	01/30/2026	99070	TRANSPORTATION DEPARTMENT	HS/INSTRUC/Student Development Conf 2/9/26	255.00
11	1147	02/02/2026	99070	TRANSPORTATION DEPARTMENT	HS/BMITE/A. Monks/DECA State 2/3-4/2026	390.00
11	1148	02/02/2026	11852	PROSPERITY BANK 46514	HS/BITE/GRAHAM/DECA STATE/HOTEL	150.00
11	1149	02/02/2026	88710	APRIL GRAHAM	HS/BITE/GRAHAM/DECA STATE/TRAVEL EXP	100.00
11	1150	02/02/2026	11852	PROSPERITY BANK 46514	OPER/REGISTRATION FEE FOR ALICIA OWEN/OKASBO	150.00
11	1151	02/02/2026	88689	KATHERINE PARR	PUBLIC INFO/REIMB FOR TRAVEL/K PARR/12-10-25	161.00
11	1152	02/02/2026	11852	PROSPERITY BANK 46514	BOE/REGISTRATIONS	3,000.00
11	1153	02/02/2026	11852	PROSPERITY BANK 46514	EAST/BITE/ISTE HOTEL/6/28-6/30	975.00
11	1154	02/02/2026	84271	VINA J GOWDY	EAST/BITE/ISTE TRAVEL/6/28-6/30	490.00
11	1155	02/02/2026	11805	OKLAHOMA ASBO	BUS OFC/REGIST/SPRING CONF	750.00

## Encumbrance Register

Options: Year: 2025-2026, Date Range: 7/1/2025 - 6/30/2026, PO Range: 1014 - 1175, Fund(s): GENERAL FUND

Fund	PO No	Date	Vendor No	Vendor	Description	Amount
11	1156	02/03/2026	68807	PRNOSS LLC	TRANS/BUS REPAIRS FROM ACCIDENT	11,041.97
11	1157	02/03/2026	10614	MIDWEST BUS SALES, INC	TRANS/BUS REPAIRS FROM ACCIDENT	24,335.24
11	1158	02/03/2026	11871	PROSPERITY BANK-AMAZON	LINCOLN/INSTRU/MUSIC SUPPLIES	225.00
11	1159	02/03/2026	36819	FOWLER VENDING CORPORATION	GF/COPY PAPER FOR FY 26	29,131.20
11	1160	02/03/2026	31160	COOP COUNCIL FOR OK SCHOOL ADMIN	GARFIELD/INSTR/CCOSA CONF REGIST	575.00
11	1161	02/03/2026	11852	PROSPERITY BANK 46514	HS/BMITE/A.Monks/HP Laserjet Ink	800.00
11	1162	02/03/2026	11852	PROSPERITY BANK 46514	HS/GT/AP US History Curriculum Materials	40.00
11	1163	02/03/2026	12108	PROSPERITY BANK-SOLUTION TREE	TITLE II/SOLUTION TREE/BOOKS	500.00
11	1164	02/03/2026	10006	THOMPSON SCHOOL BK DEPOSITORY, INC	TEXTBOOKS/SS WORKBOOKS/ELEMENTARY	25,752.94
11	1165	02/04/2026	11852	PROSPERITY BANK 46514	OPER/LODGING/ALICIA OWEN TRAINING	124.00
11	1166	02/04/2026	10298	FROG PUBLICATIONS, INC	LINCOLN/TITLE1/BOOK	60.00
11	1167	02/04/2026	11852	PROSPERITY BANK 46514	BUS OFC/HOTEL FOR OKASBO CONFR	600.00
11	1168	02/04/2026	11871	PROSPERITY BANK-AMAZON	TROUT/TITLE I/BOOK/NOVEL SETS	3,000.00
11	1169	02/04/2026	11875	PROSPERITY BANK-HOLIDAY INN	TROUT/TITLE I/LODGING FOR ITEEA CONFERENCE	1,700.00
11	1170	02/04/2026	31019	READ NATURALLY, INC	SRA/CURR/WORD WARMUPS & COMP BUILDER	5,283.00
11	1171	02/04/2026	11138	PONCA CITY SCHOOLS/COPY CENTER	SRA/SUMMER SCHOOL COPIES/DISTRICT	400.00
11	1172	02/04/2026	11852	PROSPERITY BANK 46514	CURR/SUMMER SCHOOL/DISTRICT	1,500.00
11	1173	02/04/2026	12273	UNITED UPTIME SERVICES INC	TRANS/FUEL EQUIPMENT REPAIRS	2,848.76
11	1174	02/04/2026	11852	PROSPERITY BANK 46514	WCA/STATE ART GRANT SUPPLIES	500.00
11	1175	02/04/2026	69076	THE RESPONSIVE COUNSELOR LLC	ROOS/GRANT/COUNSELING CURRICULUM	451.00

<b>Non-Payroll Total:</b>	<b>\$893,974.45</b>
<b>Payroll Total:</b>	<b>\$0.00</b>
<b>Balance Forward:</b>	<b>\$0.00</b>
<b>Report Total:</b>	<b>\$893,974.45</b>

## Encumbrance Register

Options: Year: 2025-2026, Date Range: 7/1/2025 - 6/30/2026, PO Range: 162 - 177, Fund(s): BUILDING FUND

Fund	PO No	Date	Vendor No	Vendor	Description	Amount
21	162	01/12/2026	20371	W.W. GRAINGER, INC	OPER/OUTDOOR LITTER VACUUM	3,465.94
21	163	01/13/2026	68619	HERC RENTALS INC	OPER/SCISSORLIFT RENTAL FOR EMS AND PO HI	817.63
21	164	01/19/2026	31719	KYLER CONSTRUCTION GROUP	OPER/FOR EMERGENCY FLASHING REPAIR AT LN	1,000.00
21	165	01/19/2026	10161	CARY'S SEPTIC LLC	OPER/VO-AG SEPTIC TANK	2,000.00
21	166	01/19/2026	68773	SPORTS SURFACE MANAGEMENT, LLC	OPER/TURF MAINTENANCE AT BASEBALL	5,450.00
21	167	01/21/2026	67558	CHARLES R BELKNAP	OPER/DISTRICT PIANO TUNING	2,000.00
21	168	01/21/2026	20675	GRIMSLEY'S INC	OPER/ CHARIOT SCRUBBER FOR MAINTENANCE	9,300.00
21	169	01/21/2026	20365	WARD'S AIR CONDITIONING, INC	OPER/EMER/DISTRICT HVAC REPAIR	8,000.00
21	170	01/23/2026	20100	H & T GLASS CO, INC	OPER/HS WEIGHT ROOM MIRROR REPLACEMENT	3,600.00
21	171	01/27/2026	68460	SOFTCHOICE CORPORATION	OPER/MICROSOFT OFFICE 365/EMAIL RENEWAL	48,883.83
21	172	01/29/2026	49844	P&K EQUIPMENT, INC	OPER/BACKPACK SNOW BLOWERS	1,438.02
21	173	01/29/2026	11852	PROSPERITY BANK 46514	OPER/MERRIFIELD/HORSESHOE TABLE AT WMS	681.52
21	174	01/29/2026	20549	STOLHAND-WELLS PLUMB,HEAT,AIR	OPER/HOWELL GAS LINE LEAK REPAIR #2	8,077.41
21	175	01/30/2026	67982	TRAFERA HOLDINGS, LLC	OPER/LAPTOPS NEEDED TO RUN HVAC CONTROL SOFTWARE	1,796.00
21	176	02/02/2026	11871	PROSPERITY BANK-AMAZON	OPER/IPAD PROTECTOR CASE FOR MAINTENANCE IPAD	30.98
21	177	02/04/2026	11852	PROSPERITY BANK 46514	OPER/EMERGENCY/REPLACEMENT PUMP AT ROBSON	2,232.89

<b>Non-Payroll Total:</b>	<b>\$98,774.22</b>
---------------------------	--------------------

<b>Payroll Total:</b>	<b>\$0.00</b>
-----------------------	---------------

<b>Balance Forward:</b>	<b>\$0.00</b>
-------------------------	---------------

<b>Report Total:</b>	<b>\$98,774.22</b>
----------------------	--------------------

## Encumbrance Register

Options: Year: 2025-2026, Date Range: 7/1/2025 - 6/30/2026, PO Range: 94 - 102, Fund(s): CHILD NUTRITION FUND

Fund	PO No	Date	Vendor No	Vendor	Description	Amount
22	94	01/09/2026	86440	BRANDI TURNER	travel reimbursement in district	250.00
22	95	01/09/2026	87759	AMBER HUTSON	travel reimbursement in district	250.00
22	96	01/09/2026	68338	MEWE INC	cellular hub connections	180.00
22	97	01/21/2026	35515	US FOODS, INC	purchase food for school sites	75,000.00
22	98	01/21/2026	11852	PROSPERITY BANK 46514	purchase washer for CN at Po Hi	660.00
22	99	01/22/2026	69047	EEC GP BLOCKER, INC	repairs to West CNP dishmachine	6,500.00
22	100	01/22/2026	69073	ASHLEY VIERS	LUNCH REFUND/HS	47.05
22	101	02/03/2026	86861	REGINA BURNS	mileage reimbursement in district travel	500.00
22	102	02/04/2026	67700	BUFFY JOHNSTON	LUNCH REFUND/HS	21.00
<b>Non-Payroll Total:</b>						<b>\$83,408.05</b>
<b>Payroll Total:</b>						<b>\$0.00</b>
<b>Balance Forward:</b>						<b>\$0.00</b>
<b>Report Total:</b>						<b>\$83,408.05</b>

**Ponca City Public Schools**

**Encumbrance Register**

**Options:** Year: 2025-2026, Date Range: 7/1/2025 - 6/30/2026, PO Range: 2 - 2, Fund(s): BOND FUND 33

<b>Fund</b>	<b>PO No</b>	<b>Date</b>	<b>Vendor No</b>	<b>Vendor</b>	<b>Description</b>	<b>Amount</b>
33	2	01/21/2026	67546	PALEN MUSIC CENTER, INC	INSTRU/BAND INSTRUMENTS/MOUTHPIECES/KI TS	3,261.03
<b>Non-Payroll Total:</b>						<b>\$3,261.03</b>
<b>Payroll Total:</b>						<b>\$0.00</b>
<b>Balance Forward:</b>						<b>\$0.00</b>
<b>Report Total:</b>						<b>\$3,261.03</b>

## Encumbrance Register

Options: Year: 2025-2026, Date Range: 7/1/2025 - 6/30/2026, PO Range: 13 - 20, Fund(s): BOND FUND 35

Fund	PO No	Date	Vendor No	Vendor	Description	Amount
35	13	01/13/2026	67982	TRAFERA HOLDINGS, LLC	Chromebook Refresh for High Schools and Elem	576,000.00
35	14	01/21/2026	49690	STANDARD & POOR'S RATINGS SERVICES	NEW BOND RATINGS	30,000.00
35	15	01/21/2026	68314	FLOYD & DRIVER PLLC	BOND COUNSEL SERVICE	10,000.00
35	16	01/21/2026	10120	STEPHEN H. MCDONALD & ASSOC., INC.	COST OF ISSUANCE/FINANCIAL ADV SERV	57,250.00
35	17	01/21/2026	11267	OFFICE OF ATTORNEY GENERAL	TRANSCRIPT EXAM FEE	4,000.00
35	18	01/29/2026	67982	TRAFERA HOLDINGS, LLC	Laptop Desktop Refresh for TR, LN, LB, WO	99,780.00
35	19	01/30/2026	11718	SHI INTERNATIONAL, CORP	Carbon Black Anti Virus Renewal	40,618.75
35	20	01/30/2026	68947	INTERWORKS, INC	Ruckus Network Management Licensing Renewal	16,865.17
<b>Non-Payroll Total:</b>						<b>\$834,513.92</b>
<b>Payroll Total:</b>						<b>\$0.00</b>
<b>Balance Forward:</b>						<b>\$0.00</b>
<b>Report Total:</b>						<b>\$834,513.92</b>

## Encumbrance Register

Options: Year: 2025-2026, Date Range: 7/1/2025 - 6/30/2026, PO Range: 140 - 153, Fund(s): GIFT FUND

Fund	PO No	Date	Vendor No	Vendor	Description	Amount
81	140	01/13/2026	33060	C.C. IMEX	HS/STEM/FORENSICS/MINI LAB ITEMS	436.00
81	141	01/13/2026	11852	PROSPERITY BANK 46514	HS/STEM/WIPES/CABLE/MICROPHONE W STAND	355.61
81	142	01/13/2026	40092	NORTHERN OKLAHOMA COLLEGE	HS/PONCA CITY CLASS OF 1962 SCHOLARSHIP/ H.LECLAIR	2,500.00
81	143	01/19/2026	67571	REDLANDS OFFICE SOLUTIONS, LLC	LINCOLN/GIFT/LAMINATOR	3,631.60
81	144	01/21/2026	68601	PROJECT LEAD THE WAY, INC	WEST/PLTW/SUPPLIES	2,767.00
81	145	01/21/2026	11852	PROSPERITY BANK 46514	HS/STEM/Consumables STEM Sparks PK-8th	2,000.00
81	146	01/21/2026	11852	PROSPERITY BANK 46514	HS/STEM/Consumables for STEM Program-PoHi	3,000.00
81	147	01/27/2026	40235	PONCA CITY AREA CHAMBER OF COMMERCE	HOF/CHAMBER BLAST/JOHNSON EVENT	200.00
81	148	01/27/2026	32966	DANNY'S BBQ HEAD QUARTERS, INC	HOF/CATERING FOR JOHNSON EVENT	2,000.00
81	149	01/27/2026	10470	PIONEER TECHNOLOGY CENTER	HOF/JANITORIAL SERVICE/JOHNSON EVENT	150.00
81	150	01/27/2026	20863	A+ PRINTING LLC	HOF/PRINTING JOHNSON TICKETS	300.00
81	151	01/27/2026	20863	A+ PRINTING LLC	HOF/JOHNSON EVENT/PROGRAMS	600.00
81	152	01/27/2026	20863	A+ PRINTING LLC	HOF/JOHNSON EVENT/VIP SIGNS	100.00
81	153	02/03/2026	12039	STEMFINITY, LLC	HS/STEM/3D Printer Filament & Shipping	536.74

<b>Non-Payroll Total:</b>	<b>\$18,576.95</b>
<b>Payroll Total:</b>	<b>\$0.00</b>
<b>Balance Forward:</b>	<b>\$0.00</b>
<b>Report Total:</b>	<b>\$18,576.95</b>

## 5.12 WELLNESS

### **Preamble**

Ponca City Public Schools (hereto referred to as the District) is committed to the optimal development of every student. The District believes that for students to have the opportunity to achieve personal, academic, developmental, and social success, we need to create positive, safe, and health-promoting learning environments at every level, in every setting, throughout the school year.

Research shows that two components, good nutrition and physical activity before, during, and after the school day, are strongly correlated with positive student outcomes. For example, student participation in the U.S. Department of Agriculture's (USDA) School Breakfast Program is associated with higher grades and standardized test scores, lower absenteeism, and better performance on cognitive tasks.<sup>1,2,3,4,5,6,7</sup> Conversely, less-than-adequate consumption of specific foods including fruits, vegetables, and dairy products, is associated with lower grades among students.<sup>8,9,10</sup> In addition, students who are physically active through active transport to and from school, recess, physical activity breaks, high-quality physical education, and extracurricular activities – do better academically.<sup>11,12,13,14</sup>

This policy outlines the District's approach to ensuring environments and opportunities for all students to practice healthy eating and physical activity behaviors throughout the school day while minimizing commercial distractions. Specifically, this policy establishes goals and procedures to ensure that:

- Students in the District have access to healthy foods throughout the school day—both through reimbursable school meals and other foods available throughout the school campus—in accordance with Federal and state nutrition standards;
- Students receive quality nutrition education that helps them develop lifelong healthy eating behaviors;
- Students have opportunities to be physically active before, during, and after school; Schools engage in nutrition and physical activity promotion and other activities that promote student wellness;
- School staff are encouraged and supported to practice healthy nutrition and physical activity behaviors in and out of school;
- The community is engaged in supporting the work of the District in creating continuity between school and other settings for students and staff to practice lifelong healthy habits; and
- The District establishes and maintains an infrastructure for management, oversight, implementation, communication about, and monitoring of the policy and its established goals and objectives.

This policy applies to all students, staff, and schools in the District.

## **I. SCHOOL WELLNESS COMMITTEE**

### ***Community Role, Membership, Outreach, and Communications***

The District will convene a representative district wellness committee (hereto referred to as the DWC or work within an existing school health committee) that meets at least two times per year to establish goals for and oversee school health and safety policies and programs, including development, implementation, and periodic review and update of this district-level wellness policy (hereto referred to as “wellness policy”)

The District will permit parents, students, representatives of the school food authority, physical education teachers, school health professionals, the school board, school administrators, and the general public to serve on the local school wellness policy committee and participate in the development, implementation, review, and update of the local school wellness policy. To encourage broad public participation in the process, the District will do the following:

- Actively notify parents and the broader community about the content and implementation of as well as any changes to the wellness policy, whether through electronic communications (e.g., email, District website, etc.), non-electronic means (e.g., mailings, presentations, etc.), or both.
- Ensure that all outreach and communication is culturally appropriate and translated as needed.
- Educate community stakeholders on how they can participate in the development, implementation, review, and update of the wellness policy and let them know why their participation is important to the health and wellness of students and the broader community.

### ***Leadership***

The District will designate one or more official(s) to facilitate the development of the local school wellness policy, oversee appropriate updates to the policy, and ensure each school’s compliance with the policy. The District will ensure that the designated official(s) fully understand(s) the federal and state laws related to wellness policies.

The Executive Director of Operations and Director of Child Nutrition, or designee (s), will convene at the DWC and facilitate development of and updates to the wellness policy, and will ensure each school’s compliance with the policy.

Name(s), position(s), and contact information of the designated official(s) is included in Appendix A.

## **II. WELLNESS POLICY IMPLEMENTATION, MONITORING, ACCOUNTABILITY, AND COMMUNITY ENGAGEMENT**

### ***Implementation Plan***

The District will develop and maintain a plan for implementation to manage and coordinate the execution of this wellness policy. The plan delineates roles, responsibilities, actions, and timelines specific to each school, and includes information about who will be responsible to make what change, by how much, where, and when, as well as specific goals and objectives for nutrition standards for all foods and beverages available on the school campus, food and

beverage marketing, nutrition promotion and education, physical activity, physical education, and other school-based activities that promote student wellness.

This wellness policy and the progress reports can be found at <http://ponca.ok.schoolwebpages.com/educaiton/components/>

The District will retain records to document compliance with the requirements of the wellness policy at 613 E. Grand. Documentation maintained in this location will include but will not be limited to:

- The written wellness policy;
- Documentation demonstrating compliance with community involvement requirements, including (1) Efforts to actively solicit DWC membership from the required stakeholder groups; and (2) These groups' participation in the development, implementation, and periodic review and update of the wellness policy;
- Documentation of annual policy progress reports for each school under its jurisdiction; and
- Documentation of the triennial assessment\* of the policy for each school under its jurisdiction;
- Documentation demonstrating compliance with public notification requirements, including: (1) Methods by which the wellness policy, annual progress reports, and triennial assessments are made available to the public; and (2) Efforts to actively notify families about the availability of the wellness policy.

### ***Annual Progress Reports***

The District will compile and publish an annual report to share basic information about the wellness policy and report on the progress of the school within the district in meeting wellness goals. This annual report will be published around the same time each year in May, and will include information from each school within the District. This report will include but is not limited to:

- The website address for the wellness policy and /or how the public and receive/access a copy of the wellness policy;
- A description of each school's progress in meeting the wellness policy goals;
- A summary of each school's events or activities related to the wellness policy implementation;
- The name, person title, and contact information of the designated District policy leader(s) identified in Section I; and
- Information on how individuals and the public can get involved with the DWC or SWC

The annual report will be available at 613 E. Grand, Ponca City, OK 74601

The DWC, will establish and monitor goals and objectives for the District's schools, specific and appropriate for each instructional unity (elementary or secondary OR elementary, middle, and high school, as appropriate, for each of the content-specific components listed in sections IIII-V of this policy.

### ***Triennial Progress Assessments***

At least once every three years, the District will measure the extent to which schools are in compliance with the local wellness policy, as well as progress made in attaining the policy's goals. Additionally:

- Parents, students, physical education teachers, school health professionals, the school board, school administrators, and the general public will be allowed to participate in the development, implementation, and periodic review and update of the local wellness policy.
- The District will assess how its policy compares with the latest national recommendations on school health, and will update the policy accordingly.
- The District will inform and update the public about the content and implementation of the local wellness policy (via the District's website, handouts, newsletters sent directly to families' homes, etc.).

The position/person responsible for managing the triennial assessment and contact information is the District Executive Director of Operations and/or Director of Child Nutrition.

The DWC, in collaboration with individual schools, will monitor schools' compliance with this wellness policy.

### ***Revisions and Updating the Policy***

The DWC will update or modify the wellness policy based on the results of the annual progress reports and triennial assessments, and/or as District priorities change; community needs change, wellness goals are met; new health science, information, and technology emerge; and new Federal or state guidance or standards are issued. **The wellness policy will be assessed and updated as indicated at least every three years, following the triennial assessment.**

## **III. NUTRITION**

### ***School Meals***

The District will make nutritious foods available on campus during the school day to promote student and staff health. At a minimum, the District Child Nutrition Program will serve reimbursable meals that meet the United States Department of Agriculture's (USDA) requirements and follow the Dietary Guidelines for Americans (DGA).

All Schools within the District are committed to offering school meals through the National School Lunch Program (NSLP) and School Breakfast Program (SBP) and Summer Feeding Program, and other applicable Federal Child Nutrition programs, that:

- Menus will be posted on the District website or individual school websites, and will include nutrient content and ingredients.
- The Child Nutrition Program will work with the local distributor to highlight locally sourced products in the school meal program.
- Accessible, appealing, and attractive to all children
- Served in a clean, pleasant, and supervised setting
- High in fiber, free of added trans fats, and lower in added fats, sugar, and sodium

- Respectful of cultural diversity (e.g., students will be encouraged to suggest local, cultural, and favorite ethnic foods) and religious preferences
- Reviewed by a registered dietitian or other certified nutrition professional / based on a meal plan provided by a professional resource (such as the State Department of Education, the USDA, the Alliance for a Healthier Generation, or The Lunch Box).
- School meals are administered by a team of child nutrition professionals.
- The District child nutrition program will accommodate students with special dietary needs as directed by an IEP.
- Encourage students to start the day with a healthy breakfast.
- Provide breakfast through the USDA School Breakfast Program.
- Participation in Federal Child Nutrition Programs will be promoted among students and families to help ensure that families know what programs are available in their children's school.
- Promote healthy food and beverage choices using at least ten of the following Smarter Lunchroom techniques:
  - Whole fruit options are displayed in attractive bowls or baskets (instead of chafing dishes or hotel pans)
  - Sliced or cut fruit is available daily
  - Daily fruit options are displayed in a location in the line of sight and reach of students
  - All available vegetable options are displayed in allocation in the line of sight and reach of students
  - All available vegetable options have been given creative or descriptive names
  - Daily vegetable options are bundled into all grab-and-go meals available to students
  - All staff members, especially those serving, have been trained to politely prompt students to select and consume the daily vegetable options with their meal
  - White milk is placed in front of other beverages in all coolers
  - A reimbursable meal can be created in any service area available to students (e.g., salad bars, snack room, etc.)
  - Student surveys and taste testing opportunities are used to inform menu development, dining space décor, and promotion ideas
  - Daily announcements are used to promote and market menu options.

### ***Staff Qualifications and Professional Development***

The District will follow the USDA's Professional Standards for State and Local Nutrition Programs in selecting local school nutrition program directors. Also, the District will require all personnel in the school nutrition programs to complete annual continuing education and training. In addition, Child Nutrition Staff will do the following:

- Receive training in basic nutrition, nutrition education, safe food preparation, and nutrition standards for healthy meals and snacks.
- Organize and participate in educational activities that support healthy eating behaviors and food safety.

### ***Water***

Schools will make clean drinking water available and accessible without restriction and at no charge at every district facility (including cafeterias and eating areas, classrooms, hallways,

playgrounds, and faculty lounges) throughout the school day. Schools will also ensure the following:

- Water cups/jugs will be available in the cafeteria if a drinking fountain is not present.
- Students may be provided drinking cups, glasses, or reusable water bottles in places where meals and snacks are served.
- Students will be allowed to bring drinking water from home and take water into the classroom, provided that the water is in a capped, clear container, such as a bottle, to prevent spills.

All water sources and containers will be maintained on a regular basis to ensure good hygiene standards (including drinking fountains, water jugs, hydration stations, and other methods for delivering drinking water).

**Information and Promotion:** As required under the National School Lunch Program (7 CFR 210.12), the District will promote activities to involve students and parents in the School Lunch Program. In addition, the District will do the following:

- Inform families about the availability of breakfasts for students.
- Distribute materials to inform families of the availability and location of free Summer Food Service Program meals for students when school is not in session.
- Post information on the nutritional content and ingredients of school meals on menus in the cafeteria, on the District website, and/or websites of individual schools, and/or in school newsletters.
- Send applications for reimbursable meal programs to families at the beginning of the school year and make applications available on the District website.

**Adequate Time to Eat:** The District will allow students at least 10 minutes to eat breakfast and 20 minutes to eat lunch from the time they are seated.

### ***Competitive Foods and Beverages***

The District is committed to ensuring that all foods and beverages available to students on the school campus\* during the school day\* support healthy eating. All competitive foods and beverages sold (and served outside of the school meal programs) to students during the school day must meet or exceed the USDA's Smart Snacks standards. Smart Snacks aim to improve student health and well-being, increase consumption of healthful foods during the school day, and create an environment that reinforces the development of healthy eating habits. A summary of the standard and information is available at: <http://www.fns.usda.gov/healthierschoolday/tools-schools-smart-snack>. The Alliance for a Healthier Generation provides a set of tools to assist with the implementation of Smart Snacks available at [www.healthiergeneration.org/smartsnacks](http://www.healthiergeneration.org/smartsnacks). These standards will apply in all locations and through all services where foods and beverages are sold, which may include, but are not limited to, a la carte options in cafeterias, vending machines, school stores, and snack or food carts.

### ***Celebrations and Rewards***

Other foods and beverages provided (not sold) on campus (e.g., for classroom parties, celebrations, shared snacks, afterschool-programming) must meet the USDA's Smart Snacks standards.

1. Celebrations and parties: The District will provide parents and teachers with a list of ideas for healthy food as well as non-food alternatives for classroom parties (e.g., the USDA's resources on "[Healthy Celebrations](#)") and after-school programming (including celebrations). Healthy party ideas can be found from the Alliance for a Healthier Generation and the USDA.
2. Rewards and incentives: The district will provide teachers and other relevant school staff with a list of alternate ways to reward children.
3. **If parents bring a classroom snack, the District will provide parents with a list of foods and beverages that meet Smart Snack nutrition standards.**

### ***Rewards and Punishment***

Food, beverages, and candy will not be used to reward or punish academic performance or student behavior.

### ***Fundraising***

Foods and beverages that meet or exceed the USDA Smart Snacks in Schools nutrition standards may be sold through fundraisers on the school campus\* during the school day\*. Fundraising during school hours will sell only non-food items or foods and beverages that meet or exceed the Smart Snacks nutrition standards. This may include, but is not limited to, donation nights at restaurants, cookie-dough, candy, and pizza sales, and market days.

The following will also occur:

- Fundraising activities will not promote any particular food brands.
- The District will encourage fundraisers that do not sell food and/or that promote physical activity.
- The District will make available to parents and teachers a list of healthy fundraising ideas [examples from the Alliance for a Healthier Generation and the USDA]

**After-School Concessions and Fundraisers:** Foods and beverages offered at after-school concessions or as part of fundraisers held outside of school hours are encouraged to comply with the USDA's Smart Snack standards.

### ***Nutrition Promotion***

The District will promote healthy food and beverage choices and appropriate portion sizes by doing the following:

- Exhibiting posters, signs, or other displays on the school campus that promote healthy nutrition choices.
- Providing age-appropriate activities, such as contests, food demonstrations, and taste-testing, that promote healthy eating habits.

- Offering information to families (via communications with parents, educational workshops, screening services, and health-related exhibitions and fairs) and encouraging them to teach their children about nutrition and healthy eating behaviors.
- Encouraging school staff to display healthy eating habits and physical activity choices to students (e.g., by eating with students during meal times, consuming only healthy snacks, meals, and beverages in front of students, sharing positive experiences with physical activity with students, etc.).

The District will promote healthy food and beverage choices for all students throughout the school campus, as well as encourage participation in school meal programs through:

- Implementing evidence-based healthy food promotion techniques through the school meal programs using Smarter Lunchroom techniques.
- Promoting foods and beverages that meet the USDA Smart Snacks in School nutrition standards. Additional promotional techniques the District and individual schools may use are available at [www.healthergeneration.org/smartsnack](http://www.healthergeneration.org/smartsnack).

### ***Nutrition Education***

Schools will offer—and integrate into the core curriculum—nutrition education to all grades (K-12), providing students the knowledge and skills necessary for lifelong healthy eating behaviors, including the following:

- What it means to eat healthfully, consume the proper nutrients, and maintain a wholesome and balanced diet. How to read labels and understand the problems associated with unhealthy food marketing to children.
- Complies with state learning objectives and standards.
- Is part of not only health education classes, but also integrated into other classroom instruction through subjects such as math, science, language arts, social sciences, and elective subjects.
- Include enjoyable, developmentally-appropriate, culturally-relevant, and participatory activities, such as cooking demonstrations or lessons, promotions, taste-testing, farm visits, and school gardens.
- Provides opportunities for students to practice and apply the skills and knowledge taught in the classroom (e.g., by using the cafeteria as a learning lab, visiting local farms, etc.).
- Is made available for staff.
- Is promoted to families and the community.
- Promote fruits, vegetables, whole-grain products, low-fat and fat-free dairy products, and healthy food preparation methods.
- Emphasize caloric balance between food intake and energy expenditure (promotes physical activity/exercise)
- Link with school meal programs, cafeteria nutrition promotion activities, school gardens, Farm to School Programs, other school foods, and nutrition-related community services
- Teach media literacy with an emphasis on food and beverage marketing

### ***Essential Healthy Eating Topics in Health Education***

The District may include in the health education curriculum the following essential topics on healthy eating:

- The relationship between healthy eating and personal health and disease prevention
- Food guidance from MyPlate
- Reading and using the USDA's food labels
- Eating a variety of foods every day
- Balancing food intake and physical activity
- Eating more fruits, vegetables, and whole grain products
- Choosing foods that are low in fat, saturated fat, and cholesterol and do not contain trans-fat
- Choosing foods and beverages with little added sugar
- Eating more calcium-rich foods
- Preparing healthy meals and snacks
- Risks of unhealthy weight control practices
- Accepting body size differences
- Food safety
- Importance of water consumption
- Making healthy choices when eating at restaurants
- Eating disorders
- The Dietary Guidelines for Americans
- Reducing sodium intake
- Social influences on healthy eating, including media, family, peers, and culture
- How to find valid information or services related to nutrition and dietary behavior
- How to develop a plan and track progress toward achieving a personal goal to eat healthfully
- Resisting peer pressure related to unhealthy dietary behavior
- Influencing, supporting, or advocating for others' healthy dietary behavior

### ***Food and Beverage Marketing***

The District is committed to providing a school environment that ensures opportunities for all students to practice healthy eating and physical activity behaviors throughout the school day while minimizing commercial distractions. The District strives to teach students how to make informed choices about nutrition, health, and physical activity. These efforts will be weakened if students are subjected to advertising on District property that contains messages inconsistent with the health information the District is imparting through nutrition education and health promotion efforts. It is the intent of the District to protect and promote students' health by permitting advertising and marketing for only those foods and beverages that are permitted to be sold on the school campus, consistent with the District's wellness policy.

Any foods and beverages marketed or promoted to students on the school campus\* during the school day\* will meet or exceed the USDA Smart Snacks in School nutrition standards.

Food advertising and marketing is defined<sup>15</sup> as an oral, written, or graphic statement made for the purpose of promoting the sale of a food or beverage product made by the producer, manufacturer, seller, or any other entity with a commercial interest in the product. This term includes, but is not limited to, the following:

- Brand names, trademarks, logos, or tags, except when placed on a physically present food or beverage product or its container.
- Displays, such as on vending machine exteriors.
- Corporate brand, logo, name, or trademark on school equipment, such as marquees, message boards, scoreboards, or backboards (Note: immediate replacement of these items is not required; however, districts will consider replacing or updating scoreboards or other durable equipment over time so that decisions about the replacement include compliance with the marketing policy.)
- Corporate brand, logo, name, or trademark on cups used for beverage dispensing, menu boards, coolers, trash cans, and other food service equipment; as well as on posters, book covers, pupil assignment books, or school supplies displayed, distributed, offered, or sold by the District.
- Advertisements in school publications or school mailings.
- Free product samples, taste tests, or coupons for a product, or free samples displaying advertising of a product.

### ***Farm-to-School Programs and School Gardens***

The District will allow school gardens on District property.

The following will also occur:

- The District will dedicate resources (e.g., tools, materials, volunteer hours, etc.) to build a school garden on District property and/or actively participate in community gardens by dedicating the same resources as would be required for gardens on District property.
- The District will incorporate local and/or regional products into the school meal program.
- Schools are encouraged take field trips to local farms.
- As part of their education, students will learn about agriculture and nutrition.

## **IV. PHYSICAL ACTIVITY**

The District will encourage all students to participate in a minimum of 60 minutes of physical activity each day, whether through physical education, exercise programs, after-school athletics, fitness breaks, recess, classroom activities, or wellness and nutrition education. A substantial percentage of students' physical activity can be provided through a comprehensive, school-based physical activity program (CSPSP) that includes the components: physical education, recess, classroom-based physical activity, walking and bicycling to school, and out-of-school time activities, and the district is committed to providing these opportunities. Schools will ensure that these varied opportunities are in addition to, and not as a substitute for, physical education (addressed in the "Physical Education" subsection).

To the extent practicable, the District will ensure the availability of proper equipment and facilities that meet safety standards and will conduct necessary inspections and repairs.

### ***Punishment and Rewards***

- Physical activity will not be used or withheld as punishment. (This does not apply to participation on sports teams that have specific academic requirements.)

- The District will provide a list of alternative ways for teachers and staff to discipline students.
- The District will strongly encourage teachers to use physical activity (e.g., extra recess) as a reward.

### ***Physical Education (PE)***

The District will require all schools to establish a comprehensive, standards-based PE curriculum for each grade (K-12). Schools will ensure that PE classes and equipment afford all students (K-12) an equal opportunity to participate in PE, consistent with national and state standards for physical education.

**Elementary school students (K-5)** will participate in at least 60-89 minutes of physical education per week throughout the school year. Elementary students will participate in at least 150 minutes of PE/ Physical Activity per week throughout the entire school year. Activity may be through recess, daily physical activity integrated into the school day, and physical education time.

**Middle and high school students (6-12)** who participate in PE will participate in at least 225 minutes of PE per week throughout the entire school year.

In addition, the following requirements apply to all students (K-12):

- During PE, students will be given the opportunity to participate in many types of physical activity, including both cooperative and competitive games.
- All students will be provided equal opportunity to participate in physical education classes. The District will make appropriate accommodations to allow for equitable participation for all students and will adopt physical education classes and equipment as necessary.
- Students will engage in moderate to vigorous physical activity for more than 50 percent of the PE class time.
- Only medical waivers/exemptions from participation in physical education will be allowed.
- PE classes may have a teacher/student ratio comparable to core subject classroom size.

The District's physical education program will promote student physical fitness through individualized fitness and activity assessments (via the Presidential Youth Fitness Program or other appropriate assessment tool) and will use criterion-based reporting for each student.

### ***Recess***

Recess will complement, not substitute, physical education class. The District will require schools to provide elementary school students (K-5) with at least 20 minutes of recess each day (in addition to the PE requirements). Recess monitors or teachers will encourage students to be active, and will serve as role models by being physically active alongside the students whenever feasible. Additionally, the District will do the following:

- Develop indoor recess guidelines to ensure elementary school students (K-5) can have adequate physical activity on days when recess must be held indoors.

- Encourage schools to hold recess before lunch, in order to increase food consumption, reduce waste, and improve classroom attentiveness when students return from lunch.<sup>1</sup>

### ***Physical Activity Breaks***

The district recognizes that students are more attentive and ready to learn if provided with periodic breaks when they can be physically active or stretch. Thus, the District will require schools to provide all students (K-12) with short breaks (three to five minutes) throughout the day to let them stretch, move around, and break up their time spent sitting. These physical activity breaks may take place during and/or between classroom times. These physical activity breaks will complement, not substitute, for physical education class, recess, and class transition periods.

### ***Active Transportation***

The District will do the following:

- Encourage children and their families to walk and bike to and from school.
- Work with local officials to designate safe or preferred routes to school.
- Promote National and International Walk and Bike to School Week/Day.
- Provide bike racks for students, faculty, and staff.
- Encourage parents to supervise groups of children who walk or bike together to and from school.

### ***Teacher Qualifications, Training, and Involvement***

- Teachers will receive training on how to integrate physical activity into the curriculum. Some portion of this training will be incorporated into annual professional development.
- Schools will allow teachers the opportunity to participate in or lead physical activities before, during, and after school.
- PE classes will be taught by licensed teachers who are certified or endorsed to teach PE when possible.

### ***Community Use of Recreational Facilities***

The District will encourage school staff, students, and their families to participate in physical activity outside of the school day. Allowing staff, students, and their families to use school recreational facilities during non-school hours is one way to increase opportunities to engage in physical activity.

### ***After-School Programs: Physical Activity and Screen Time***

After-school programming will do the following:

- Dedicate at least 20%, or at least 30 minutes (whichever is more), of program time to physical activity, which includes a mixture of moderate to vigorous physical activity.
- Utilize outdoor space for physical activity as much as possible each day (weather permitting and with appropriate protection from the elements).
- Provide equal opportunities for children and youth with disabilities to be physically active.
- Encourage staff to join children and youth in physical activity whenever possible.

- Limit screen time to less than 60 minutes per day to be used only for homework and other educational or physical activity purposes.

## **V. OTHER ACTIVITIES THAT PROMOTE SCHOOL WELLNESS**

The District will integrate wellness activities across the entire school setting, not just in the cafeteria, other food and beverage venues, and physical activity facilities. The District will coordinate and integrate other initiatives related to physical activity, physical education, nutrition, and other wellness components so all efforts are complementary, not duplicative, and work towards the same set of goals and objectives promoting student well-being, optimal development, and strong educational outcomes.

Schools in the District are encouraged to coordinate content across curricular areas that promote student health, such as teaching nutrition concepts in mathematics, with consultation provided by either the school or the District's curriculum experts.

All efforts related to obtaining federal, state, or association recognition for efforts, or grants/funding opportunities for healthy school environments will be coordinated with and complementary to the wellness policy, including but not limited to ensuring the involvement of the DWC/SWC.

All school-sponsored events will adhere to the wellness policy. All school-sponsored wellness events will include physical activity opportunities.

### ***Community Partnerships***

The District will build relationships with community partners (i.e., hospitals, universities/colleges, local businesses, etc.) in support of this wellness policy's implementation. Existing and new community partnerships and sponsorships will be evaluated to ensure that they are consistent with the wellness policy and its goals.

### ***Community Health Promotion and Engagement***

The District will promote to parents/caregivers, families, and the general community the benefits of and approaches for healthy eating and physical activity throughout the school year. Families will be informed and invited to participate in school-sponsored activities and will receive information about health promotion efforts.

As described in the "Community Involvement, Outreach, and Communications" subsection, the District will use electronic mechanisms (such as email or displaying notices on the district's website), as well as non-electronic mechanisms, (such as newsletters, presentations to parents, or sending information home to parents), to ensure that all families are actively notified of opportunities to participate in school-sponsored activities and receive information about health promotion efforts.

### ***Staff Wellness***

The District recognizes that employee health is essential to student health and to creating healthy school environments. Accordingly, the District will implement an employee wellness program that promotes healthy eating, physical activity, and overall health. The District may partner with

community agencies and organizations to assist in providing education, services, and resources for staff.

The District will do the following to support staff wellness:

### **Nutrition**

- Encourage only those foods and beverages that meet Smart Snacks standards at all staff meetings, trainings, special occasions (e.g., birthdays and retirement parties), and other workplace gatherings.
- Provide employees with access to a refrigerator, microwave, and sink with a water faucet.
- Provide or partner with community organizations or agencies to offer nutrition education through activities such as seminars, workshops, classes, meetings, and newsletters.
- Partner with community organizations or agencies to offer staff accessible and free or low-cost healthy eating/weight management programs.

### **Physical Activity**

- Promote walking meetings.
- Encourage 10-minute physical activity breaks into every hour of sedentary meetings, trainings, and other workplace gatherings.
- Provide access to on-campus athletic facilities, such as gyms, running tracks, basketball courts, tennis courts, and swimming pools.
- Promote employee participation in physical activity by creating exercise clubs or groups and/or sponsoring employee sports teams.
- Use posters, pamphlets, and other forms of communication to promote physical activity (including stairwell use, if applicable).
- Provide information about local physical activity resources and facilities, such as walking trails, community parks, and recreation facilities.

### **General Wellness**

- Partner with community organizations or agencies to offer voluntary health screenings annually to staff, including free or low-cost health assessments.
- Partner with community organizations or agencies to provide stress management programs and/or information annually to staff.
- Promote tobacco prevention and provide referral information on cessation services through the Oklahoma Tobacco Helpline.
- Provide access to a private space (other than a restroom) that has an electrical outlet, and provide flexible paid or unpaid break times to allow mothers to express breast milk and/or breastfeed.
- Partner with community organizations or agencies to offer immunization clinics (e.g., flu, Tdap, etc.) to staff.
- Provide or partner with community organizations or agencies to offer free or low-cost first aid and CPR training.

### ***Professional Development***

The District will provide staff with educational resources and annual training in health and health-related topics.

### ***Health Education***

Where applicable, schools' health education curricula will follow the *Oklahoma Academic Standards*.

### ***Coordinated School Health***

The District will incorporate the Whole School, Whole Community, Whole Child model as a framework for improving students' learning and health in a school. This model combines and builds on elements of the traditional Coordinated School Health approach from the Centers for Disease Control and Prevention and the Whole Child Framework by the ASCD.

### ***Glossary***

**School campus** - areas that are owned or leased by the school and used at any time for school-related activities such as the school building or on the school campus, including on the outside of the school building, school buses or other vehicles used to transport students, athletic fields, and stadiums (e.g. on scoreboards, coolers, cups, and water bottles), or parking lots.

**School day**- The period of time from midnight before to 30 minutes after the end of the instructional day.

**Competitive foods and beverages**- Foods and beverages that are sold on campus outside of the federal reimbursable school meals program during the school day (e.g., in vending machines or school stores).

**Smart Snacks standards**- Nutrition standards, issued by the USDA, that set limits on the amount of calories, salt, sugar, and fat in competitive foods and beverages.

**Extended School Day**- time during before and after school activities that includes clubs, intramural sports, band and choir practice, drama rehearsals, etc.

**Triennial** – recurring every three years.

## Appendix A: School Level Contact

<u>Department</u>	<u>Name</u>	<u>Title</u>	<u>Email Address</u>	<u>Role</u>
Operations	Larin Davis	Executive Director of Operations	<a href="mailto:davis@pcps.us">davis@pcps.us</a>	Committee Member
Campus Nutrition	Jeff Denton	Director of Campus Nutrition	<a href="mailto:dentoj@pcps.us">dentoj@pcps.us</a>	Committee Member
Special Services	Dr. Kait Pressnall	Director of Intervention and Special Services	<a href="mailto:pressk@pcps.us">pressk@pcps.us</a>	Committee Member

## **References**

1. Bradley, B, Green, AC. Do Health and Education Agencies in the United States Share Responsibility for Academic Achievement and Health? A Review of 25 years of Evidence About the Relationship of Adolescents' Academic Achievement and Health Behaviors, *Journal of Adolescent Health*. 2013; 52(5):523–532.
2. Meyers AF, Sampson AE, Weitzman M, Rogers BL, Kayne H. School breakfast program and school performance. *American Journal of Diseases of Children*. 1989;143(10):1234–1239.
3. Murphy JM. Breakfast and learning: an updated review. *Current Nutrition & Food Science*. 2007; 3:3–36.
4. Murphy JM, Pagano ME, Nachmani J, Sperling P, Kane S, Kleinman RE. The relationship of school breakfast to psychosocial and academic functioning: Cross-sectional and longitudinal observations in an inner-city school sample. *Archives of Pediatrics and Adolescent Medicine*. 1998;152(9):899–907.
5. Pollitt E, Mathews R. Breakfast and cognition: an integrative summary. *American Journal of Clinical Nutrition*. 1998; 67(4), 804S–813S.
6. Rampersaud GC, Pereira MA, Girard BL, Adams J, Metz J. Breakfast habits, nutritional status, body weight, and academic performance in children and adolescents. *Journal of the American Dietetic Association*. 2005;105(5):743–760, quiz 761–762.
7. Taras, H. Nutrition and student performance at school. *Journal of School Health*. 2005;75(6):199–213.
8. MacLellan D, Taylor J, Wood K. Food intake and academic performance among adolescents. *Canadian Journal of Dietetic Practice and Research*. 2008;69(3):141–144.
9. Neumark-Sztainer D, Story M, Dixon LB, Resnick MD, Blum RW. Correlates of inadequate consumption of dairy products among adolescents. *Journal of Nutrition Education*. 1997;29(1):12–20.
10. Neumark-Sztainer D, Story M, Resnick MD, Blum RW. Correlates of inadequate fruit and vegetable consumption among adolescents. *Preventive Medicine*. 1996;25(5):497–505.
11. Centers for Disease Control and Prevention. The association between school-based physical activity, including physical education, and academic performance. Atlanta, GA: US Department of Health and Human Services, 2010.
12. Singh A, Uijtdewilligne L, Twisk J, van Mechelen W, Chinapaw M. Physical activity and performance at school: A systematic review of the literature including a methodological quality assessment. *Arch Pediatr Adolesc Med*, 2012; 166(1):49-55.
13. Haapala E, Poikkeus A-M, Kukkonen-Harjula K, Tompuri T, Lintu N, Väistö J, Leppänen P, Laaksonen D, Lindi V, Lakka T. Association of physical activity and sedentary behavior with academic skills – A follow-up study among primary school children. *PLoS ONE*, 2014; 9(9): e107031.
14. Hillman C, Pontifex M, Castelli D, Khan N, Raine L, Scudder M, Drollette E, Moore R, Wu C-T, Kamijo K. Effects of the FITKids randomized control trial on executive control and brain function. *Pediatrics* 2014; 134(4): e1063-1071.
15. Change Lab Solutions. (2014). District Policy Restricting the Advertising of Food and Beverages Not Permitted to be Sold on School Grounds. Retrieved from <http://changelabsolutions.org/publications/district-policy-school-food-ads>.

ADOPTED: October 9, 2017

REVISED: August 13, 2018; October 14, 2019, February 9, 2026

PONCA CITY SCHOOLS PERSONNEL REPORT February 9, 2026				
<u>NAME</u>	<u>ASSIGNMENT</u>	<u>EFFECTIVE DATE</u>	<u>PROJ. #</u>	<u>SALARY</u>
<b><u>EMPLOYMENTS</u></b>				
<b><u>CERTIFIED PERSONNEL</u></b>				
Heppler, Kellie	Contract sub 60%	1/20/2026	000	Salary Schedule
<b><u>SUPPORT PERSONNEL</u></b>				
Hay, Kaitlyn	SpEd Para @ Union	2/9/2026	028	Salary Schedule
Rathbun, Rose	Registrar @ West	2/9/2026	000	Salary Schedule
Tisdale, Amber	Site Secretary @ East	2/9/2026	000	Salary Schedule
<b><u>SEPARATIONS</u></b>				
<b><u>CERTIFIED PERSONNEL</u></b>				
Collenback, Lynne	English @ PoHi	5/22/2026		
<b><u>SUPPORT PERSONNEL</u></b>				
Currier, Deborah	SpEd Para @ West	5/21/2026		
Epperson, Lacey	CNP Admin secretary	2/6/2026		
Hoach, Isolde	Adjunct teacher 4th grade @ Union	5/22/2026		
Jawin, Mona	CNP @ PoHi	1/8/2026		
McMillan, Marayah	CNP @ West	1/8/2026		
Miner, Lori	Site Secretary @ Roosevelt	1/22/2026		
Shaw, Devon	Custodian (floater)	1/6/2026		
Vaughan, Steve	8th grade assistant boys basketball coach	1/21/2026		
Wood, Brenda	SpEd Para @ Union	1/20/2026		
<b><u>CHANGE OF STATUS</u></b>				
<b><u>CERTIFIED PERSONNEL</u></b>				
Meador, Sandy	from SpEd @ Union to SpEd @ WA, PCVA, SHARE	2026-2027	028	Salary Schedule
<b><u>SUPPORT PERSONNEL</u></b>				
Bauer, David	from bus aide to bus driver	1/7/2026	000	Salary Schedule
Hall, Angela	from Title I TA @ Liberty to SpEd Para @ Garfield	1/13/2026	028	Salary Schedule
Patton, Cassandra	from Custodian to CNP	2/9/2026	CNP	Salary Schedule

PONCA CITY SCHOOLS PERSONNEL REPORT

February 9, 2026

PAGE 2

<u>NAME</u>	<u>ASSIGNMENT</u>	<u>EFFECTIVE DATE</u>	<u>PROJ. #</u>	<u>SALARY</u>
<b><u>EXTRA DUTY</u></b>				
<b><u>CERTIFIED PERSONNEL</u></b>				<b><u>NON-CONTRACT DUTY</u></b>
Brown, Christie	Spring Tutors	2025-2026	511	\$27.60/hr up to 12 hrs
Brown, Megan	Spring Tutors	2025-2026	511	\$27.60/hr up to 12 hrs
Crossland, Katrina	Spring Tutors	2025-2026	511	\$27.60/hr up to 12 hrs
Fisher, Valerie	Spring Tutors	2025-2026	511	\$27.60/hr up to 12 hrs
Goss, Kristi	After School Tutoring	2025-2026	511	\$27.60/hr up to 30 hrs
Gowdy, Vina	Athletics	2025-2026	171	\$14.40 per hour
Guenther, Kaila	Spring Tutors	2025-2026	511	\$27.60/hr up to 12 hrs
Hoach, Isolde	Gifted and Talented	2025-2026	162	\$27.60/hr up to 37 hrs
Shoup, Linda	Spring Tutors	2025-2026	511	\$27.60/hr up to 12 hrs
Smith, Stephanie	Oklahoma paid student teacher stipend	2025-2026	311	\$1,625
Snelding, Deb	Spring Tutors	2025-2026	511	\$27.60/hr up to 12 hrs
Stewart, Elizabeth	After School Tutoring	2025-2026	511	\$27.60/hr up to 30 hrs
Waterman, Deb	Spring Tutors	2025-2026	511	\$27.60/hr up to 12 hrs
<b><u>CERTIFIED PERSONNEL</u></b>				<b><u>CONTRACT DUTY</u></b>
Cochran, Paula	Mentor teacher for Luke McHenry	2025-2026	541	\$350.00
Naile, Andrea	Master's Degree Stipend	2025-2026	000	\$1,500.00
<b><u>SUPPORT PERSONNEL</u></b>				<b><u>NON-CONTRACT DUTY</u></b>
Enninga, Miracle	Spring Tutors	2025-2026	511	\$27.60/hr up to 12 hrs
Fisher, Thomas	Reimbursement for State and City License	2025-2026	000	\$200/\$75
Hagar, Kaitlyn	8th grade Assistant Volleyball Coach	2025-2026	170	Salary Schedule
Kilgore, Navena	Title I TA	2025-2026	511	\$12.35 per hour
Owen, Alicia	Athletics	2025-2026	171	\$14.40 per hour
Sims, Terry	Reimbursement for State and City License	2025-2026	000	\$200/\$75
<b><u>SUPPORT PERSONNEL</u></b>				<b><u>CONTRACT DUTY</u></b>
<b><u>SUBSTITUTES</u></b>				
<b><u>ADDITIONS FOR THE 2025-2026 SCHOOL YEAR</u></b>				
(Teacher Substitute: \$80/day, Teacher Asst. Substitute: \$70/day)				
<b>*See Attachment A</b>				

Ponca City Public Schools  
Personnel Report  
February 9, 2026  
Attachment A

**FOR BOARD APPROVAL  
SUBSTITUTE TEACHERS  
FEBRUARY 2026**

1. Heppler, Kellie&\$(CONT)
2. Richard, Connor&\$(CONT)

#=Receiving OTRS Payment  
\$=Bachelors  
\*=Certified  
&=Contract Bachelor's  
(CONT)=Contract Sub