



AGENDA
Shawnee Public Schools
Board of Education - Administration Building
326 N. Union Ave.
Shawnee, OK 74801
Monday, December 15, 2025
6:00 PM

Special Session

NOTE: The Shawnee School District Board of Education may discuss, vote to approve, disapprove, table, or decide not to vote or take action on any item on this agenda.

1. Call to Order
 - A. Roll Call
 - B. Board Recognizes Hannah Holland, Principal of Jim Thorpe Academy, to introduce students.
 - C. Minute of Silence and Invocation
 - D. Flag Salute
2. Presentation from Jim Thorpe Academy
3. Report of the Superintendent
 - A. Superintendent's Items, Announcements & Recognition
 - a. Recognitions & Announcements
 - Cross Country State Recognition
 - Bill Huskey Retirement
 - B. Presentation from Secondary Education Graduation Credits/Requirements task force.
 - C. Presentation from Middle School task force regarding new Graduation Requirements for the Class of 2030.
 - D. Presentation by Secondary Education Career Pathways Task Force on Academic Academies and their Pathways.
 - E. Board discussion and possible action on a \$250 per full time employee Christmas Bonus.
 - F. Central Office Reports
 - Educational Services Report
 - Special Services Report
 - Counseling and Community Engagement

- Communications Report
 - Operations Report
4. Consent Docket Items: All of the following items will be approved by one vote unless any Board Member desires to have a separate vote on any or all of these items. Possible action by the Board of Education to approve:
- A. Minutes of the 11-3-25 Regular Board Meeting and minutes of the 11-20-25 Special Board Meeting
 - B. Report of the Chief Financial Officer
 - a. Treasurer's Report
 - b. Encumbrance Registers for 25-26FY

BOND FUND 03 PAYMENT REGISTER 21-26
 GENERAL FUND 11 ENCUMBRANCES 671-777
 BUILDING FUND 21 ENCUMBRANCES 146-156
 BOND FUND 33 ENCUMBRANCES 23-34
 BOND FUND 34 ENCUMBRANCES 5
 GIFT FUND 81 ENCUMBRANCES 14-49

- C. New School Activity Fund Account for Shawnee Middle School - National History Day #883
 - D. School Activity Fund Transfers for the 25-26 FY
 - E. Disposal of Surplus School Property
 - F. Organizations Requesting Sanctioning for the 25-26 SY
 - a) Shawnee Wrestling Booster Club
 - G. Agreements:
 - a) Speech-Language Pathology Contract w/Trilby D. Schmidt
 - b) OSSAA - South Rock Creek & Shawnee Middle School (Soccer)
 - c) Pott County Sales Tax - Sovereign Bank Ideal Impact Payoff
 - d) Pott County Sales Tax - Sovereign Bank Windows Payoff
5. Vote to convene or not to convene into Executive Session
- A. Proposed Executive Session (25 O.S. §307 (B) (1)) to discuss:
 - 1. Evaluation of the Superintendent
 - 2. Superintendent's Personnel Report
6. Acknowledge to return to Open Session
7. Board President's Statement of Executive Session Minutes.
8. Approval of Superintendent's Personnel Reports, Exhibit A (and Exhibit B that was presented under separate cover)
9. Board member comments and announcements
10. Adjournment

Any persons with a disability and needing special accommodations to attend the Board of Education Meeting should notify the Superintendent's Office at least 24 hours prior to the scheduled time of the meeting, if possible. The telephone number is 273-0653, extension 3125.

Shawnee Board of Education

326 North Union (Front Doors)
Shawnee OK. 74801

Posted by Wendy Tucker, Executive Administrative Assistant to the Superintendent/Board
Minutes Clerk

Posted this ___ at ___ at the front glass doors of the Shawnee Board of Education Central
Offices, Shawnee Public Schools, 326 N. Union, Shawnee, Oklahoma 74801

Jim Thorpe Academy



Shawnee Public Schools



Vision & Mission

“At Jim Thorpe Academy we embrace challenges with tenacity and rigor, working hard to serve our community and ready ourselves for **employment, enlistment, or enrollment** in postsecondary opportunities. We carry the TORCH!”

T - tenacity

O - opportunity

R - rigor

C - community

H - hard work

Outdoor Education & Family Sciences

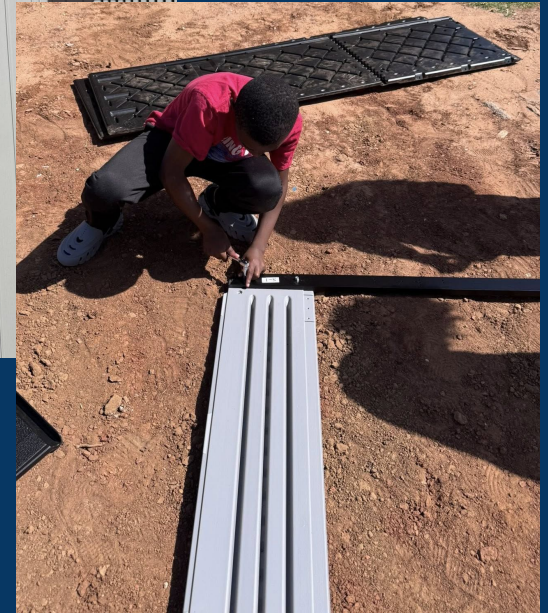


What's the *Purpose*?

The purpose is to give students real-world skills that go beyond the classroom. Through hands-on learning, students build confidence, leadership, and teamwork while exploring career pathways in wellness, education, environmental science, and community service. These programs help students prepare to **live independently, work responsibly, and make a positive impact in their communities**

Tool Shed

- Constructed by JTA students
- Incorporates geometry, outdoor ed, family science standards



Garden.....thank you SEF & ReNutrient!



- Constructed by JTA students
- Incorporates geometry, Oklahoma history, outdoor ed, family sciences standards



Greenhouse.....thank you SEF & BancFirst!

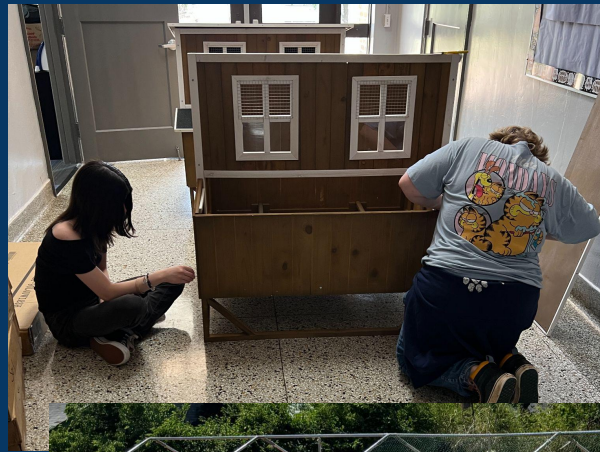


- Constructed by JTA staff & students
- Incorporates earth science, family sciences, outdoor ed standards



Chicken Coop

- Constructed by JTA staff & students
- Incorporates geometry, family science, outdoor ed, biology, and earth science standards



Tiny House.....thank you Sovereign Bank!



- Constructed by JTA staff, students, and Lowe's partners
- Incorporates geometry, family science, outdoor ed standards



Outdoor Education & Family Sciences



Outdoor Education & Family Sciences



Thank you to our JTA partners!

- BOE - approval of Family Science & Outdoor Ed standards
- Dr. Jason James - partnership with ReNutrient
- Matt Johnson - guidance and resources
- Shawnee Educational Foundation - Outdoor Ed grants
- BancFirst - Outdoor Ed grant
- Sovereign Bank - Tiny House grant
- ReNutrient & OSU - garden partnership
- Lowe's of Shawnee - Tiny House partnership

Credits for Graduation

SHAWNEE HIGH SCHOOL



Current Shawnee High School Requirements:

- Shawnee requires a student to earn 50 credits to meet graduation requirements
- SHS uses the 1.0-credit-per-unit system
 - Meaning a student earns one credit for every completed course per semester.
 - English I first semester = 1 credit
 - A student would potentially earn 7 credits per semester
- Starting with the 2026-2027 school year, we would like to move to a 24 credit graduation system.
 - The following slides will demonstrate why we feel this change is necessary.

Counting Credits by .5 or by 1:

- The State Department counts each semester course or credit as 0.5.
 - Among the many in-state students transferring to Shawnee High School, only three students came from schools that award full 1.0-credit courses; more than 25 students transferred from schools that use a 0.5-credit system.
 - We are not aligned with most of the districts in our state in how we count credits
 - This change would help streamline transcribing students who transfer into our district and reduce errors when matching credit values.

Yukon High School

1777 S. Yukon Parkway, Yukon, OK 73099

Phone: 405-354-6692 Fax: 405-354-6641

Website: www.yukonps.com

Student Name	Date of Birth	State ID

Total Credits	Weighted GPA	Unweighted GPA	Current Class
17.00	4.0769	3.9231	96 out of 74

Course Name / Course Number	S1		S2	
	Gr	Cr	Gr	Cr
21-22 Seminole Middle School, Seminole, OK				
Algebra I 4411	B	1	B	1
Family and Consumer Science 8415	A	1	B	1
22-23 Yukon High School				
Accelerated Geometry 4520	A	1	A	1
Biology I 5031	A	1	A	1
English I 4045			A	1
English I* 4045	A	1		
Female Strength and Conditioning 3320	A	1		
G. Wrestling 3330			A	1
G. Wrestling Weights 3320			A	1
Keystone 2745	A	1		
Oklahoma History 5615			B	1
Spanish I 3161	A	1	A	1

2021-2022 (GPA: 3.25)

Course	Area	Grade	Credits Attempted	Credits Earned	Code
Algebra I A (Seminole Middle School)	Mathematics	B	0.50	0.50	
Algebra I B (Seminole Middle School)	Mathematics	B	0.50	0.50	
Family & Consumer Science A (Seminole Middle School)	Other	A	0.50	0.50	
Family & Consumer Science B (Seminole Middle School)	Other	B	0.50	0.50	
			2.00	2.00	

2022-2023 (GPA: 3.92)

Course	Area	Grade	Credits Attempted	Credits Earned	Code
Spanish I A (Yukon High School)	Humanities	A	0.50	0.50	
Spanish I B (Yukon High School)	Humanities	A	0.50	0.50	
English 9 A (Yukon High School)	Language Arts	A	0.50	0.50	
English 9 B (Yukon High School)	Language Arts	A	0.50	0.50	
Accelerated Geometry A (Yukon High School)	Mathematics	A	0.50	0.50	
Accelerated Geometry B (Yukon High School)	Mathematics	A	0.50	0.50	
Female Strength Conditioning (Yukon High School)	Other	A	0.50	0.50	
G Wrestling (Yukon High School)	Other	A	0.50	0.50	
G Wrestling Weights (Yukon High School)	Other	A	0.50	0.50	
Keystone (Yukon High School)	Other	A	0.50	0.50	
Biology I A (Yukon High School)	Science	A	0.50	0.50	
Biology I B (Yukon High School)	Science	A	0.50	0.50	
Oklahoma History (Yukon High School)	Social Studies	B	0.50	0.50	
			6.50	6.50	

Then student comes to SHS:

Shawnee High School Official Transcript

Student Name:
Date of Birth: :
State ID:
Graduation Date:

1001 N Kennedy
Shawnee, OK 74801
(405) 275-3084

	SEMESTER 1	SEMESTER 2			
24-25 Shawnee High School			State Assessments		
American History	A 1.00	A 1.00	English Language Arts:		
Chemistry I	C 1.00	C 1.00	Math:		
College Art Survey		B 1.00	Science:		
Contemporary Issues		A 1.00	History:		
Design Basics		A 1.00			
English III AP	A 1.00	B 1.00			
Family and Consumer Science I	A 1.00				
Film as Literature I	A 1.00				
Film as Literature: Adaptations		A 1.00			
Internship	A 1.00				
Survey of College Prep Math	C 1.00				
23-24 Oklahoma Connections Academy			ACT SCORES		
Algebra 2	B 1.00	A 1.00	Date Taken:	Date Taken:	Date Taken:
English 10	A 1.00	A 1.00	04/25/2025		
High School Health: Life Skills	A 1.00	A 1.00	English: 21	English:	English:
Personal Finance	A 1.00		Math: 17	Math:	Math:
Physical Science/Lab	A 1.00	A 1.00	Reading: 21	Reading:	Reading:
Spanish II	A 1.00	A 1.00	Science: 15	Science:	Science:
World History Beginnings to Present	A 1.00	A 1.00	Composite: 19	Composite:	Composite:
22-23 Yukon High School, OK			Graduation Endorsements		
Accelerated Geometry	A 1.00	A 1.00	The student has satisfactorily met the CPR/AED requirement.		
Biology	A 1.00	A 1.00			
English I	A 1.00	A 1.00	The student has satisfactorily completed the 14 areas of instruction for Personal Financial Literacy.		
Female Strength & Conditioning	A 1.00				
G. Wrestling		A 1.00			
G. Wrestling Weights		A 1.00			
Keystone	A 1.00				
Oklahoma History		B 1.00			
Spanish I	A 1.00	A 1.00			
21-22 Seminole Middle School, OK					
Algebra I	B 1.00	B 1.00			
Family & Consumer Science	A 1.00	B 1.00			

Reasons to change to .5 from 1 credit:

- Mistakes can easily happen when converting from .5 credits to 1 credits.
- Takes more time to convert .5 credits to 1 credit due to not straight typing the information from previous transcript.
- Confusion when explaining to parents coming from a school who counted by .5 credits why they need 14 more credits to graduate then just saying 7 more credits to graduate their senior year.

Changing credit requirements:

- We are asking for 24 credits to be the requirement.
- Students will still be one full credit above the state minimum requirement which is 23 credits.
- If a student does pass everything while attending SHS, they will be graduating with 28 credits.
- This allows a little more room for students to do credit recovery if needed and stay on track for graduation.
- We would like to start the new graduation requirements and the shift from a 1.0-credit system to a 0.5-credit system to begin with the school year of 2026-2027.

SHAWNEE MIDDLE SCHOOL

Expanding Opportunities:
Personalized Learning, Acceleration,
and Educational Pathways



Personalized Learning: Additional Elective Options

- With the creation of pathways, we now have an opportunity to expand and enhance our middle school offerings to better align with Enroll, Enlist, Employ.
- Potential New Elective Offerings:
 - Financial Literacy
 - Outdoor Education
 - Home Maintenance
 - Photography
 - Podcasting/Journalism
 - Creative Writing
 - Additional High School Credit Opportunities

Personalized Learning: Accelerated Courses

- We also aim to meet the needs of individual students, particularly those seeking greater academic challenge, by expanding our accelerated course offerings.

Shawnee Middle School currently offers:

1. Spanish I (8th grade)
2. Algebra I (8th grade)

Potential High School Credit Courses:

1. Fine Art Credit
2. Geometry
3. English I
4. Oklahoma History
5. Psychology
6. Biology
7. Computers

The Journey: What We've Done, Where We Are, What's Next

What We've Accomplished:

1. Students completed the Interest Profiler and a Career Cluster Survey
2. We surveyed Teachers
3. Counselors surveyed Students
4. Discussions with Curriculum Coordinator, Aimee King

Where We are Now:

1. Analyzing Student IXL Data
2. Math/ELA Alignment Meetings
3. Reviewing Student Survey Information

What is Next:

1. Individual Student Minute Meetings with the Counselors
2. Curriculum/Standards for New Courses
3. Student Course Selection

Academies and Pathways: Building Future-Ready Students

A collaborative initiative to align career pathways with student aspirations and post-secondary success



Meeting Overview

November 13, 2025 | 2:00-4:00 PM

Our district leadership team convened to refine and implement a comprehensive academy and pathway system that will transform how students plan for their futures. This collaborative session brought together counselors, administrators, and curriculum specialists to establish clear structures that align with state standards and industry needs.

The focus: creating six distinct academies that provide students with meaningful pathways to enroll in college, enlist in military service, or gain employment with industry-ready skills immediately upon graduation.

Key Participants

- Michelle Wallace
- Courtney Lewellen
- Amanda Chandler
- Jackie Noble
- Keely Tolin
- Hannah Holland
- Tara Hill & Tara Cook
- Megan Bloom
- Dianne DeYoung
- Dr. Dominguez
- Aimee King

Three Pathways to Success

Enroll

Pursue higher education through college, university, or specialized training programs. Students gain the academic foundation and credentials needed for post-secondary success.

Enlist

Serve through military branches with preparation including ASVAB testing, physical readiness, and leadership development. Build discipline, skills, and opportunities for continued education.

Employ

Enter the workforce with industry-ready certifications, hands-on experience, and technical skills valued by employers. Graduate prepared for immediate career opportunities.

Every academy and career pathway is intentionally designed to support at least one—and often all three—of these post-graduation options, ensuring students have clear direction and purpose in their coursework.

Six Academies Aligned to Student Futures

Our district has established six comprehensive academies, each aligned with ICAP standards and state career pathways. These academies replace the previous "fields and clusters" terminology with a more student-friendly and actionable framework.

01

Human Services and Resources

Education and Training | Law, Government and Public Service | Service Industries

03

Communication and Information Systems

Arts and Communications | IT and Computer Science

05

Business

Marketing and Management | Finance and Accounting

02

Health Sciences

Advanced Health Careers | Applied Health Careers | Health Careers

04

Manufacturing and Engineering Systems

STEM (engineering, robotics, aviation) | Industrial Trades (automotive, construction, manufacturing, electrical, HVAC, welding)

06

Environmental and Agricultural Systems

Agriculture, Food, and Natural Resources | Environmental and Outdoor Sciences

Implementation Strategy: Counselor-Led Guidance



Personalized Pathway Selection

No student will choose a pathway in isolation. Instead, trained counselors will guide each student through a deliberate, informed process that considers their interests, strengths, and post-graduation goals.

This counselor-led approach ensures students understand the full scope of each academy, the career opportunities available, and how their coursework connects to real-world outcomes. Counselors will use interest inventories, career assessments, and one-on-one conversations to help students make confident, informed decisions.

- ❏ **Critical:** All secondary counselors will meet to align on pathway guidance protocols before student advising begins.

Visual Communication and Parent Education

Graphics and Posters

Amanda Johnson will create professional graphics for classroom display, ensuring pathways are visible and accessible. Posters will clarify academy structures and show connections between coursework and careers.

Grade Level Titles

Titles will be reworked to reflect years in the program rather than traditional grade levels, helping students see progression and commitment within their chosen pathway.

Parent Engagement

Early education for parents is essential. Beginning with 5th graders entering middle school, families will learn how academies and pathways align with their student's future, empowering them to support informed decisions.



December Board Presentation

December 15, 2025 | Approximately 5 Minutes

1

Credit Changes

Presenters: Tara Cook and Dianne DeYoung

Explanation of updated graduation credit requirements and how various transfer scenarios are accommodated within the new system.

2

Graduation Requirements

Presenter: Megan Bloom (full team requested to attend)

Comprehensive overview of pathway classes, academy structures, and how students prepare for enrollment, enlistment, or employment opportunities.

3

Accelerated Courses

Presenter: Keely Tolin

Review of SMS accelerated course offerings designed to maximize post-secondary opportunities through personalized learning experiences.



Current Status: Inventories and Interest Assessments

SMS (Middle School)

Interest inventories are being administered next week, providing critical data about student interests and helping counselors prepare targeted pathway conversations.

SHS (High School)

Currently gathering student interest information to gauge pathway preferences and ensure appropriate course offerings align with student goals and career aspirations.

JTA (Junior/Technical Academy)

Interest inventory completed this year, with results informing technical program enrollment and ensuring students are placed in pathways matching their skills and interests.

34%

SPS Mobility Rate

Last year's student mobility rate across the district

10%

Current Mobility

Year-to-date mobility rate, showing improvement in student retention and stability

Understanding mobility helps us design flexible pathways that accommodate students who transfer mid-year while maintaining continuity in their career preparation.

Next Steps: Coordination and Implementation

1 — January 14, 2026 | 2:00 PM | PDC

All Counselors and Admin Reps Meeting

Emphasis on course advising protocols to ensure consistency across all buildings. Counselors will align on how to present pathway information, incorporate Enroll-Enlist-Employ framework, and support student decision-making.

2 — **Career Tech Codes Discussion**

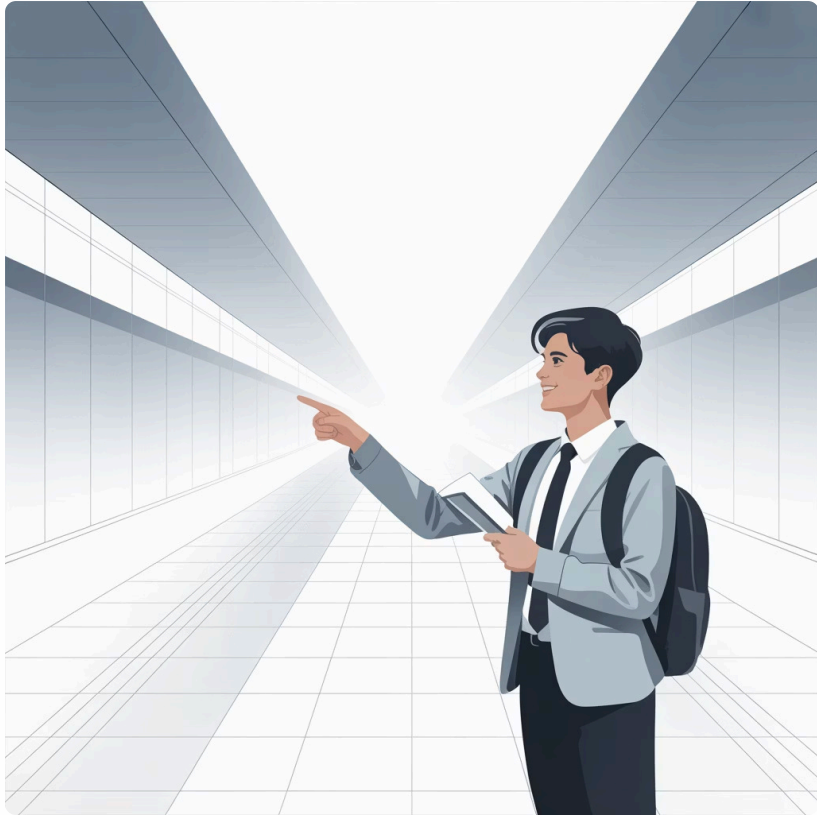
Review and finalize Career Tech Code applications required by the state. All submissions must be completed and submitted to the state department by July 1, 2026.

3 — **SHS Course Review**

High school will conduct comprehensive review of current course offerings, identifying additions needed to support pathway completion and removing courses that no longer align with academy goals.



Building Pathways That Lead Somewhere



Our academies and pathways represent more than just a reorganization of courses—they represent a commitment to helping every student discover their strengths, connect their learning to meaningful goals, and graduate with a clear plan for success.

Whether a student dreams of attending medical school, serving their country, or stepping into a skilled trade, our six academies provide the structure, support, and coursework to make those dreams achievable.

By aligning with ICAP standards, engaging parents early, and ensuring counselors are equipped to guide students thoughtfully, we're building a system where every graduate leaves prepared—not just with a diploma, but with direction, skills, and confidence for what comes next.

"Every student deserves a pathway that leads somewhere. Through intentional planning, collaboration, and student-centered guidance, we're making that vision a reality."



ACADEMIES

PATHWAYS

ACADEMY DESIGN

PHILOSOPHY

1. Support students in planning for life after high school.
2. Help families make informed decisions about coursework, academies, and long-term goals.
3. Align with ICAP, technical education programs, and state mandates regarding pathways.
4. Enroll, Enlist, Employ

SIX STRATEGIC ACADEMY AREAS

Human Services and Resources: Careers in education, government, and social services.

Health Sciences: Prepares students for medical, dental, nursing, and allied health professions.

Communication and Information Systems: Covers the arts, media, technology, and digital communication fields.

Manufacturing and Engineering Systems: Provides hands-on training and supports economical development in high-tech productions.

Business: Develops skills in management, entrepreneurship, finance, and marketing.

Environmental and Agricultural Systems: Prepares for economy jobs and environmental needs, includes outdoor sciences and education.

ACADEMY COMPONENTS

Our pathways were intentionally developed within each category to meet the specific needs of students preparing to enlist, enroll, or enter the workforce immediately after graduation.

For example:

The Health Sciences Academy Pathways

- college enrollment in medical or allied health program
- enlist in health-related military specialties
- certifications/skills required to enter the healthcare workforce directly after graduation

ACADEMY COMPONENTS

The Health Sciences

Pathway 1: College enrollment in medical or allied health program

- Doctor, Administration, Pharmaceuticals

Pathway 2: Enlist in health-related military specialties

- Medic, Healthcare Specialist, Civilian Certs

Pathway 3: Certifications/skills required to enter the healthcare workforce directly after graduation

- EMT, Phlebotomy, Skilled Trades

ACADEMY COMPONENTS

Academy	Focus Area	State/Regional Need Addressed
Human Services and Resources	Education, government, and social services.	Addresses growing workforce needs in the public sector.
Health Sciences	Medical, dental, nursing, and allied health professions.	Responds to critical shortages in the healthcare workforce.
Communication and Information Systems	Arts, media, technology, and digital communication fields.	Aligns with rapid digital transformation across industries.
Manufacturing and Engineering Systems	Hands-on training in advanced manufacturing and engineering.	Supports regional economic development in high-tech production.
Business	Management, entrepreneurship, finance, and marketing.	Meets demand for business innovation and commercial leadership.
Environmental and Agricultural Systems	Sustainable agriculture, environmental science, and natural resources.	Prepares for green economy jobs and climate resilience needs.



SHAWNEE PUBLIC SCHOOLS

326 NORTH UNION AVENUE | SHAWNEE, OKLAHOMA 74801-7099 | (405) 273-0653

JACKIE NOBLE

DIRECTOR OF ACADEMIC SERVICES

Academic Services Board Update 12/8/25

- **Enrollment** (as of)

PreK - 152	K - 218	1st gr - 242	2nd gr - 214	3rd gr - 207	4th gr - 246	5th gr - 227
6th gr - 223	7th gr - 234	8th gr - 225	9th gr - 255	10th gr - 260	11th gr - 247	12th gr - 231

- **Native American Heritage Month**

- Our Wolf Spirit Dancers held several performances during the month of November. They showcased a variety of dances by students of all ages, drumming, singing by our own Graham Primeaux, and they shared information about tribal customs and history.

- **Instruction/Curriculum Support**

- Aimee King, Curriculum Coordinator, and our a couple of our Instructional Coaches are working with the SMS administrative team on vertical alignment & the development of Essential Standards in ELA and Math
-

- **Professional Development**

-
- Our November 'New Teacher' training focused on.



SHAWNEE PUBLIC SCHOOLS

326 NORTH UNION AVENUE | SHAWNEE, OKLAHOMA 74801-7099 | (405) 273-0653

MICHELLE WALLACE
DIRECTOR OF COUNSELING
AND COMMUNITY ENGAGEMENT

Board Update December 15, 2025

- **Community Engagement:**
 - Kiwanis Christmas - On Sunday December 7, the Kiwanis Club of Shawnee along with many teachers and counselors, shopped for 100 Shawnee students from SECC, Horace Mann, Jefferson, Sequoyah and Will Rogers. Each child had a list of wants and needs and the Kiwanians spent \$100 per child. This is all made possible from their annual Pancake Feed which is the first Wednesday of April.
 - Excellence in Education Gala (Teacher of the Year) is scheduled for Monday, February 23 at the Grand Casino. More information to come as we just had our first planning meeting.
- **Counseling/Pathways**
 - Academic Academies & Pathways
 - 8th grade students were presented with information by their counselor regarding planning for 9th grade with the new graduation requirements. General information about what academies and pathways are and how they will select classes for 9th grade year.
 - A meeting about the transition between 8th and 9th and scheduling was held on the 12th.
 - The 8th grade counselor will begin minute meetings with all 8th graders after the break.



SHAWNEE PUBLIC SCHOOLS

326 NORTH UNION AVENUE | SHAWNEE, OKLAHOMA 74801-7099 | (405) 273-0653

ALLYSON CLEVELAND
DIRECTOR OF SPECIAL SERVICES

Student Services Board Report - December 8, 2025

- Two high school students have been approved for employment at SHS through the Department of Rehabilitation Services bringing the district total to four. Offering these in-house opportunities has a direct correlation to successful post secondary opportunities.
- Nolan Price has been granted a Mild/Moderate Certificate from SDE after passing the subject area test in November. This allows us to shift the caseloads at SHS which balances the work load on the teachers. While Mr. Price's certification helps, the District must file a Caseload Load Exception Request for four teachers who are over the recommended number.
- The implementation dates for Ed Plan Health have been adjusted. Nurses will attend a 3 hour training as part of the professional day on January 5, 2026.
- Child Count data was certified this week with a final number of 669.



SHAWNEE PUBLIC SCHOOLS

326 NORTH UNION AVENUE | SHAWNEE, OKLAHOMA 74801-7099 | (405) 273-0653

MATT JOHNSON
DIRECTOR OF OPERATIONS

Operations Board Update – Dec 8, 2025

- **Nutrition** – The new pass thru coolers are going to be delivered to MS on 12/9. Nutrition continues to update and replace outdated equipment in the site kitchens to better serve our students.
- **Transportation** - We will have 3 buses the Annual Shawnee Christmas Parade this year for the first time. Bi-Directional Chargers are due to be installed in January. These are being funded by a National Science Foundation Grant working with OU Heath Science Center and OG&E. The program is called Re-Charge Oklahoma. This will allow the district to sell stored electricity from the EV Buses back to OG&E which will offset the cost of Charging. Holiday Dinner celebration for Transportation / Maintenance on December 19th 12:00 – 1:30 PM.
- **Technology** - We have received Chromebooks from GearUp for the Middle School and High School. Technology department volunteered for 3 hours at the Community Market in November. Renewed Security Certificates for the year. We added door access at SEQ NE doors to accommodate the new parking lot.
- **Construction** – Middle school flooring is almost complete. It will all be complete prior to Christmas break. The canopy at SECC is complete. The moving of the signage is the only thing left to do. Sequoyah should be complete prior to Christmas break. We are updating the baseball press box to make it look a little nicer for when we host state events. The football press box is nearing completion. It should be complete by Christmas barring any material delivery issues.



Minutes of the Monday, November 3, 2025, Board Meeting

The Board of Education of Independent School District No. 93, Pottawatomie County, met in Regular Session on Monday, November 3, 2025 at the Board of Education - Administration Building, 326 N. Union Ave., Shawnee, OK 74801.

1. Call to Order

A. Roll Call

Attendance Taken at 6:00 PM.

Present: Clif Harden	President
Russ Oliver	1 st Vice President
Jeanne Swinney	Clerk
Turner Bass	Member
Casey White	Member
Mandy Hillhouse	Member

Absent: Kristen Wilson 2nd Vice President

B. Board Recognizes Molly Wilson, Principal of Will Rogers Elementary, to introduce students.

C. Minute of Silence and Invocation

D. Flag Salute

2. Student Performance from Will Rogers Elementary.

3. Report of the Superintendent

A. Jim Thorpe Art Award Winners and Contestants

Graham Primeaux, Director of Indian Education, presented the winners to the board.

B. Angel Cazares

Dr. James shared that since the Community Pep Rally, Angel has been approached by school sites, businesses, and individuals requesting his artwork. The painting that was unveiled during the Board Meeting was presented to the Shawnee School Board to be displayed in the boardroom.

C. Central Office Reports

- Educational Services Report

- Special Services Report
Allyson Cleveland, Director of Special Services, shared that the District Data Profile was received and the target was met for graduation. State percentage is 78% and Shawnee was at 80%.
- Counseling and Community Engagement
- Communications Report
- Operations Report

D. 2024-2025 Shawnee Public Schools Student College Remediation Report

E. 2024-2025 Shawnee Public Schools Drop out Report

F. Board discussion and possible action on updating the following board policies:

BEC: Executive Sessions

GBA: Open Records Requests

GBA-E: Open Records Request Form

GJ: School Visitors

GJ-P: School Visitors Appeals

Motion was made by Mandy Hillhouse and seconded by Jeanne Swinney to approve updating the following board policies, BEC: Executive Sessions, GBA: Open Records Requests, GBA-E: Open Records Request Form, GJ: School Visitors, and GJ-P: School Visitors Appeals. Motion carried.

Kristen Wilson: Absent, Jeanne Swinney: Yes, Mandy Hillhouse: Yes, Clif Harden: Yes, Russ Oliver: Yes, Turner Bass: Yes, Casey White: Yes
Yes: 6, No: 0, Absent: 1

G. Board of Education Resolution to County Election Board (SBE10).

Motion was made by Jeanne Swinney and seconded by Mandy Hillhouse to approve the Board of Education Resolution to County Election Board (SBE10). Motion carried.

Kristen Wilson: Absent, Turner Bass: Yes, Jeanne Swinney: Yes, Casey White: Yes, Clif Harden: Yes, Mandy Hillhouse: Yes, Russ Oliver: Yes
Yes: 6, No: 0, Absent: 1

H. Board discussion and possible action on amendment to Guaranteed Maximum Price on the following projects:

- Sequoyah Elementary Bid Package #001
- SECC Bid Package #002

Motion was made by Turner Bass and seconded by Russ Oliver to approve amendment to Guaranteed Maximum Price on Sequoyah Elementary Bid Package #001 and SECC Bid Package #002. Motion carried.

Kristen Wilson: Absent, Clif Harden: Yes, Mandy Hillhouse: Yes, Russ Oliver: Yes, Turner Bass: Yes, Casey White: Yes, Jeanne Swinney: Yes
Yes: 6, No: 0, Absent: 1

4. Opportunity for Public Comment
No Public Comment.

5. The Board will hear an appeal for Kayla Winchester's removal from School Premises. Order of the written appeal process is as follows:

1. The superintendent shall present each of the board members with a copy of the written summary provided to the complainant;
2. Kayla Winchester shall present each of the board members with a copy of a written response to the superintendent's paperwork;
3. Members of the board of education shall be afforded the opportunity to ask questions related to the summary and response;
4. The board of education shall vote to accept, amend, or reject the recommendation of the superintendent with regard to the directive to Kayla Winchester.

Motion was made by Mandy Hillhouse and seconded by Jeanne Swinney to accept the recommendation of the superintendent to uphold the directive to Kayla Winchester. Motion carried.

Kristen Wilson: Absent, Jeanne Swinney: Yes, Clif Harden: Yes, Russ Oliver: Yes, Turner Bass: Yes, Mandy Hillhouse: Yes, Casey White: No
Yes: 5, No: 1, Absent: 1

6. Consent Docket Items: All of the following items will be approved by one vote unless any Board Member desires to have a separate vote on any or all of these items. Possible action by the Board of Education to approve:

Motion was made by Turner Bass and seconded by Mandy Hillhouse to approve Consent Agenda as presented. Motion carried.

Kristen Wilson: Absent, Mandy Hillhouse: Yes, Casey White: Yes, Clif Harden: Yes, Jeanne Swinney: Yes, Russ Oliver: Yes, Turner Bass: Yes
Yes: 6, No: 0, Absent: 1

A. Minutes of the October 6th Regular Board Meeting.

B. Report of the Chief Financial Officer

a. Treasurer's Report

b. Encumbrance Registers for 25-26FY
Bond Fund 03 Payment Registers 1-19 & 1-47
General Fund 11 Encumbrances 609-671
CO-OP Fund 12 Encumbrances 9-12
Building Fund 21 Encumbrances 137-144
Bond Fund 33 Encumbrances 20-22
Gift Fund 81 Encumbrances 11-13
Insurance Fund 86 Encumbrance 3

c. School Activity Fund Transfers for the 25-26 FY

C. In State, Out of State, and Overnight Trip requests:

a) Shawnee boys soccer team to the Smokey Mountain Cup, High School Soccer tournament in Gatlinburg, Tennessee March 11th - March 16th, 2026.

D. Organizations Requesting Sanctioning for the 25-26 SY

- a) Jefferson PTO
- b) Shawnee High School Cheer Booster Club

E. Agreements:

a) Oklahoma Department of Career and Technology Education Contract for Secondary Career and Technology Education Program(s) for the 25-26 SY

b) Pressbox AIA Contract with A&S Roofing and Construction

c) Pre-ETS Collaborative Agreement

d) First United Bank Signatories Update

7. Proposed Executive Session (25 O.S. §307 (B) (1)) to discuss:

- 1. Evaluation of the Superintendent
- 2. Superintendent's Personnel Report

A. Vote to convene or not to convene into Executive Session

Motion was made by Casey White and seconded by Russ Oliver to approve to convene to Executive Session at 6:37 p.m. Motion carried.

Kristen Wilson: Absent, Clif Harden: Yes, Russ Oliver: Yes, Turner Bass: Yes, Casey White: Yes, Jeanne Swinney: Yes, Mandy Hillhouse: Yes
Yes: 6, No: 0, Absent: 1

8. Acknowledge to return to Open Session

Board Members returned from Executive Session at 7:11pm.

9. Board President's Statement of Executive Session Minutes

Board Members in attendance were, Clif Harden, Russ Oliver, Jeanne Swinney, Turner Bass, Casey White, Mandy Hillhouse, and Superintendent Dr. Jason James.

No votes were taken and no other matters were discussed in Executive Session.

10. Discussion and possible action of Superintendent's Personnel Reports, Exhibit A (and Exhibit B that was presented under separate cover)

Motion was made by Turner Bass and seconded by Russ Oliver to approve Superintendent's Personnel Reports, Exhibit A (and Exhibit B that was presented under separate cover).

Motion carried.

Kristen Wilson: Absent, Turner Bass: Yes, Jeanne Swinney: Yes, Mandy Hillhouse: Yes, Clif Harden: Yes, Casey White: Yes, Russ Oliver: Yes
Yes: 6, No: 0, Absent: 1

11. New Business: New business means any matter not known about or which could not have been reasonably foreseen prior to the time of posting. 25 O.S. § 311.

12. Board member comments and announcements

Mandy Hillhouse acknowledged Graham Primeaux for being recognized by the State Department of Education for Jim Thorpe Night at Shawnee

Mandy Hillhouse also shared that she attended the Middle School band concert and was impressed with the three faculty members and all they have accomplished with the students. The teachable moments that were shared with parents as far as the whys and hows of practice and also, concert etiquette. Mandy stated that it was a great job.

Jeanne Swinney wanted to compliment everyone who was involved with the Community pep rally and hopes that is an event that will continue in the future.

Clif Harden seconded what Jeanne stated and added that events have run smoothly from the football games down to the elementary events. Clif stated that everyone is following the new security protocols. Clif said it was great in turning that page for safety and security.

Clif Harden also wished everyone a Happy Thanksgiving!

13. Adjournment

Motion was made by Clif Harden, Board President, to adjourn meeting at 7:15pm.
Motion unseconded.

ATTEST: _____ President

Clerk: _____

I hereby certify that I accurately transcribed the forgoing minutes and furnished copies to the executive officers, the board clerk and all board members prior to this meeting, but the original of the same was retained at all times in the administrative office of the School District and that the provisions of the 1977 Open Meeting Law (Title 25, Section 201-314 of Oklahoma Statutes) were adhered to.

Approved: _____

Secretary: _____



Minutes of the Thursday, November 20, 2025 Board Meeting

The Board of Education of Independent School District No. 93, Pottawatomie County, met in Special Session on Thursday, November 20, 2025 at the Board of Education - Administration Building, 326 N. Union Ave., Shawnee, OK 74801.

1. Call to Order

A. Roll Call

Attendance Taken at 1:00 P.M.

Present: Clif Harden	Board President
Jeanne Swinney	Clerk
Russ Oliver	1 st Vice President
Turner Bass	Member
Mandy Hillhouse	Member
Absent: Kristen Wilson	2 nd Vice President
Casey White	Member

2. The Board will hear an appeal for Cyndi Berger's removal from School Premises. Order of the written appeal process is as follows:

1. The superintendent shall present each of the board members with a copy of the written summary provided to the complainant;
2. Cyndi Berger shall present each of the board members with a copy of a written response to the superintendent's paperwork;
3. Members of the board of education shall be afforded the opportunity to ask questions related to the summary and response;
4. The board of education shall vote to accept, amend, or reject the recommendation of the superintendent with regard to the directive to Cyndi Berger.

Motion was made by Turner Bass to amend the directive to change the time period from 6 months to 2 months effective November 1, 2025. No second was made. Motion failed.

Motion was made by Mandy Hillhouse and seconded by Jeanne Swinney to accept the recommendation from the Superintendent with regard to the directive of Cyndi Berger. Motion carried.

Casey White: Absent, Kristen Wilson: Absent, Turner Bass: No, Jeanne Swinney: Yes, Russ Oliver: Yes, Clif Harden: Yes, Mandy Hillhouse: Yes

Yes: 4, No: 1, Absent 1

3. Board discussion and possible action on the Memorandum of Understanding between Seminole State College and Shawnee Public Schools regarding an Early College High School option for Shawnee High School students for 25-26 AY.

Motion was made by Mandy Hillhouse and seconded by Turner Bass to approve the Memorandum of Understanding between Seminole State College and Shawnee Public Schools regarding an Early College High School option for Shawnee High School students for 25-26 AY. Motion carried.

Casey White: Absent, Kristen Wilson: Absent, Turner Bass: Yes, Jeanne Swinney: Yes, Russ Oliver: Yes, Clif Harden: Yes, Mandy Hillhouse: Yes
Yes: 5, No: 0, Absent: 2

4. Board discussion and possible action on the Memorandum of Understanding with Seminole State College for Concurrent/Dual Enrollment for the 25-26.

Motion was made by Turner Bass and seconded by Russ Oliver to approve the Memorandum of Understanding with Seminole State College for Concurrent/Dual Enrollment for the 25-26. Motion carried.

Casey White: Absent, Kristen Wilson: Absent, Jeanne Swinney: Yes, Mandy Hillhouse: Yes, Turner Bass: Yes, Russ Oliver: Yes, Clif Harden: Yes
Yes: 5, No: 0, Absent: 2

5. Presentation of GMax and Bid Tabulation document for the Mary Jo Stucker Event Center.

- A) Justin Beaty of Wynn Construction
- B) Matthew Radclif of MASS Architects

6. Board discussion and possible action on the Guaranteed Maximum Cost for the Mary Jo Stucker Event Center.

Motion was made by Turner Bass to approve the Guaranteed Maximum Cost for the Mary Jo Stucker Event Center as presented. Motion carried.

Casey White: Absent, Kristen Wilson: Absent, Clif Harden: Yes, Jeanne Swinney: Yes, Russ Oliver: Yes, Mandy Hillhouse: Yes, Turner Bass: Yes
Yes: 5, No: 0, Absent: 2

7. Adjournment

Motion was made by Clif Harden, Board President, to adjourn meeting at 1:28pm.
Motion was unseconded.

ATTEST: _____ President

Clerk: _____

I hereby certify that I accurately transcribed the forgoing minutes and furnished copies to the executive officers, the board clerk and all board members prior to this meeting, but the original of the same was retained at all times in the administrative office of the School District and that the provisions of the 1977 Open Meeting Law (Title 25, Section 201-314 of Oklahoma Statutes) were adhered to.

Approved: _____

Secretary: _____

Shawnee Public Schools - Statement of Financial Activity

	General	CooP Funds	Building	Bond Funds	Sinking Funds	Gift Funds	Insurance Funds	Total
Beginning Balance 10/01/2025	\$ 3,917,520.43	\$ (2,427.99)	\$ 2,235,315.60	\$ 1,674,721.41	\$ 917,006.27	\$ 963,977.90	\$ 1,652,545.57	\$ 11,358,504.19
								\$ -
Receipts - Local Revenue	\$ 46,922.17	\$ -	\$ 39,601.69	\$ -	\$ 18,446.30	\$ 33,609.26	\$ -	\$ 138,579.42
Receipts - Intermediate Revenue	\$ -	\$ -	\$ 10,559.25	\$ -	\$ -	\$ -	\$ -	\$ 10,559.25
Receipts - State Revenue	\$ 2,091,950.34	\$ -	\$ -	\$ -	\$ -	\$ -	\$ -	\$ 2,091,950.34
Receipts - Federal Revenue	\$ 119,426.28	\$ -	\$ -	\$ -	\$ -	\$ -	\$ -	\$ 119,426.28
Receipts - Misc Revenue/Adjusting Entries	\$ 280.00	\$ -	\$ 1,000.00	\$ -	\$ -	\$ -	\$ -	\$ 1,280.00
Total Receipts	\$ 2,258,578.79	\$ -	\$ 51,160.94	\$ -	\$ 18,446.30	\$ 33,609.26	\$ -	\$ 13,720,299.48
Disbursements - FY 25 Checks Paid	\$ 1,125.00	\$ -	\$ -		\$ -	\$ -	\$ 186,455.91	\$ 187,580.91
Disbursements - FY 26 Checks Paid	\$ 3,600,115.20	\$ 163.33	\$ 721,756.64	\$ 138,040.14		\$ 2,336.19	\$ 211,933.59	\$ 4,674,345.09
Total Disbursements	\$ 3,601,240.20	\$ 163.33	\$ 721,756.64	\$ 138,040.14	\$ -	\$ 2,336.19	\$ 398,389.50	\$ 4,861,926.00
Adjusting Entries - Deposit In Transit	\$ -							
Adjusting Entries - Interest								
Ending Cash Balance 10/31/2025	\$ 2,574,859.02	\$ (2,591.32)	\$ 1,564,719.90	\$ 1,536,681.27	\$ 935,452.57	\$ 995,250.97	\$ 1,254,156.07	\$ 8,858,528.48
Outstanding Checks - FY 25	\$ 2,286.82	\$ -	\$ 450.00	\$ -	\$ -	\$ -	\$ -	\$ 2,736.82
Outstanding Checks - FY 26	\$ 113,643.13	\$ -	\$ 34,170.50	\$ 4,697.89	\$ 109,706.25	\$ 635.48	\$ -	\$ 262,853.25
Book End Balance (UNAUDITED)	\$ 2,458,929.07	\$ (2,591.32)	\$ 1,530,099.40	\$ 1,531,983.38	\$ 825,746.32	\$ 994,615.49	\$ 1,254,156.07	\$ 8,592,938.41
FY 26 Appropriations	\$ 40,647,236.62	\$ -	\$ 5,204,826.73					
FY 26 Encumbrances	\$ 36,691,584.88		\$ 4,244,053.68					
Estimated FY 26 Fund Balance	\$ 3,955,651.74		\$ 960,773.05					

Shawnee Public Schools

Payment Clearing Register

Options: Fund: Governmental Funds, Show Detail: Yes, Date Range: 10/1/2025 - 10/31/2025, Account: All, Status: All

Clearing No	Date		Account No	Account Type	Amount	Status
	Year	Fund	Payment No	Amount		
65	10/1/2025		101	AC	\$20,004.32	Posted
	2026	11	1472	\$3,673.68		
	2026	11	1458	\$42.00		
	2026	11	1446	\$880.00		
	2026	11	1439	\$232.73		
	2026	11	1437	\$167.00		
	2026	11	1407	\$5,544.85		
		2026	11 Total	\$10,540.26		
	2026	21	185	\$8,626.06		
	2026	21	166	\$180.00		
		2026	21 Total	\$8,806.06		
	2026	33	10	\$658.00		
		2026	33 Total	\$658.00		
66	10/2/2025		101	AC	\$403,535.19	Posted
	2026	11	1461	\$425.33		
	2026	11	851	\$99.00		
	2026	11	848	\$422.43		
	2026	11	1428	\$225.00		
	2026	11	1481	\$303,758.06		
	2026	11	1444	\$96.69		
	2026	11	1479	\$96.10		
	2026	11	1425	\$58,892.00		
	2026	11	1406	\$26,617.24		
	2026	11	1408	\$5,806.10		
		2026	11 Total	\$396,437.95		
	2026	21	178	\$4,968.24		
	2026	21	177	\$1,456.00		
	2026	21	165	\$569.30		
	2026	21	167	\$103.70		
		2026	21 Total	\$7,097.24		
67	10/3/2025		101	AC	\$39,412.23	Posted
	2026	11	1480	\$25,000.00		
	2026	11	1466	\$1,250.00		
	2026	11	1465	\$5,395.11		
	2026	11	386	\$230.87		
	2026	11	1453	\$1,300.00		
	2026	11	1482	\$1,671.17		
	2026	11	1485	\$1,524.74		
	2026	11	1508	\$1,173.00		
	2026	11	1490	\$311.32		
	2026	11	1501	\$42.99		
	2026	11	1505	\$1,358.55		
		2026	11 Total	\$39,257.75		
	2026	12	2	\$99.99		
		2026	12 Total	\$99.99		
	2026	81	8	\$54.49		
		2026	81 Total	\$54.49		

Shawnee Public Schools

Payment Clearing Register

Options: Fund: Governmental Funds, Show Detail: Yes, Date Range: 10/1/2025 - 10/31/2025, Account: All, Status: All

Clearing No	Date		Account No	Account Type	Amount	Status
	Year	Fund	Payment No	Amount		
68	10/6/2025		101	AC	\$106,821.44	Posted
	2026	11	1509	\$245.84		
	2026	11	1497	\$553.98		
	2026	11	1493	\$8,715.49		
	2026	11	1471	\$362.25		
	2026	11	1460	\$150.66		
	2026	11	1454	\$3,979.05		
	2026	11	837	\$2,247.82		
	2026	11	199	\$230.87		
	2026	11	1468	\$6,264.02		
	2026	11	1489	\$6,749.53		
			2026 11 Total	\$29,499.51		
	2026	21	191	\$794.48		
	2026	21	188	\$76,527.45		
			2026 21 Total	\$77,321.93		
69	10/7/2025		101	AC	\$77,759.74	Posted
	2026	11	1511	\$40.01		
	2026	11	1506	\$5,245.34		
	2026	11	1499	\$1,475.00		
	2026	11	1496	\$8,793.75		
	2026	11	1495	\$226.52		
	2026	11	1491	\$27.50		
	2026	11	1488	\$141.15		
	2026	11	1484	\$5,576.75		
	2026	11	1483	\$30.00		
	2026	11	1448	\$2,890.00		
	2026	11	801	\$9,352.00		
	2026	11	778	\$34,411.67		
	2026	11	1504	\$9,550.05		
			2026 11 Total	\$77,759.74		
70	10/8/2025		101	AC	\$4,447.80	Posted
	2026	11	1487	\$53.50		
	2026	11	1486	\$1,246.00		
	2026	11	1457	\$83.30		
	2026	11	1498	\$2,000.00		
	2026	11	1510	\$1,065.00		
			2026 11 Total	\$4,447.80		
71	10/9/2025		101	AC	\$8,484.89	Posted
	2026	21	190	\$8,484.89		
			2026 21 Total	\$8,484.89		
72	10/10/2025		101	AC	\$84,041.21	Posted
	2025	11	9198	\$1,125.00		
			2025 11 Total	\$1,125.00		
	2026	11	1516	\$8,887.74		
	2026	11	1529	\$10,391.56		
	2026	11	1561	\$436.92		
	2026	11	1546	\$2,115.43		

Shawnee Public Schools

Payment Clearing Register

Options: Fund: Governmental Funds, Show Detail: Yes, Date Range: 10/1/2025 - 10/31/2025, Account: All, Status: All

Clearing No	Date	Account No	Account Type	Amount	Status
	Year Fund	Payment No	Amount		
	2026 11	1553		\$240.00	
		2026 11 Total		\$22,071.65	
	2026 21	189		\$686.40	
	2026 21	203		\$47,885.94	
	2026 21	195		\$6,114.76	
	2026 21	192		\$3,000.00	
	2026 21	199		\$1,015.57	
	2026 21	200		\$81.69	
		2026 21 Total		\$58,784.36	
	2026 81	9		\$2,060.20	
		2026 81 Total		\$2,060.20	
73	10/14/2025	101	AC	\$2,036,292.53	Posted
	2026 11	1558		\$469.38	
	2026 11	1552		\$1,440.00	
	2026 11	1544		\$14,343.75	
	2026 11	1543		\$350.00	
	2026 11	1535		\$275.20	
	2026 11	1527		\$18,958.62	
	2026 11	1519		\$361.94	
	2026 11	1515		\$120.00	
	2026 11	1502		\$25.00	
	2026 11	1494		\$45.00	
	2026 11	1513		\$792.61	
	2026 11	1514		\$1,652.36	
	2026 11	2127		\$1,517,111.43	
	2026 11	2121		\$293,632.38	
	2026 11	2120		\$131,557.53	
	2026 11	1532		\$5,116.00	
	2026 11	1534		\$125.00	
	2026 11	1518		\$742.50	
		2026 11 Total		\$1,987,118.70	
	2026 21	194		\$88.28	
	2026 21	228		\$37,730.39	
	2026 21	223		\$7,531.56	
	2026 21	222		\$3,479.43	
		2026 21 Total		\$48,829.66	
	2026 34	6		\$344.17	
		2026 34 Total		\$344.17	
74	10/15/2025	101	AC	\$130,150.58	Posted
	2026 11	1559		\$309.95	
	2026 11	1555		\$132.84	
	2026 11	1550		\$217.40	
	2026 11	1548		\$1,528.98	
	2026 11	1545		\$422.72	
	2026 11	1542		\$30.00	
	2026 11	1540		\$375.00	
	2026 11	1539		\$64,717.50	

Shawnee Public Schools

Payment Clearing Register

Options: Fund: Governmental Funds, Show Detail: Yes, Date Range: 10/1/2025 - 10/31/2025, Account: All, Status: All

Clearing No	Date		Account No	Account Type	Amount	Status
	Year	Fund	Payment No	Amount		
	2026	11	1528	\$25.44		
	2026	11	1526	\$32.20		
	2026	11	1523	\$350.00		
	2026	11	1522	\$4,570.83		
	2026	11	1507	\$231.20		
	2026	11	370	\$230.87		
	2026	11	1537	\$101.50		
			2026 11 Total	\$73,276.43		
	2026	21	205	\$530.19		
	2026	21	202	\$652.00		
	2026	21	201	\$5,715.00		
	2026	21	197	\$877.71		
			2026 21 Total	\$7,774.90		
	2026	33	13	\$49,099.25		
			2026 33 Total	\$49,099.25		
75	10/16/2025		101	AC	\$55,794.37	Posted
	2026	11	1551	\$200.00		
	2026	11	1547	\$250.00		
	2026	11	1533	\$19,738.88		
	2026	11	1531	\$916.04		
	2026	11	1530	\$1,322.68		
	2026	11	1524	\$8,960.00		
	2026	11	1517	\$4,000.00		
	2026	11	1492	\$5,926.32		
	2026	11	1520	\$6,450.00		
			2026 11 Total	\$47,763.92		
	2026	21	196	\$4,369.00		
	2026	21	147	\$1,666.00		
			2026 21 Total	\$6,035.00		
	2026	33	12	\$1,490.45		
	2026	33	11	\$505.00		
			2026 33 Total	\$1,995.45		
76	10/17/2025		101	AC	\$7,263.48	Posted
	2026	11	1560	\$163.05		
	2026	11	1554	\$2,504.71		
	2026	11	1525	\$2,118.92		
	2026	11	1500	\$80.00		
	2026	11	824	\$364.00		
	2026	11	799	\$1,694.42		
			2026 11 Total	\$6,925.10		
	2026	21	193	\$338.38		
			2026 21 Total	\$338.38		
77	10/20/2025		101	AC	\$28,499.19	Posted
	2026	11	1557	\$1,693.57		
	2026	11	2141	\$8,448.00		
	2026	11	2140	\$198.00		
			2026 11 Total	\$10,339.57		

Shawnee Public Schools

Payment Clearing Register

Options: Fund: Governmental Funds, Show Detail: Yes, Date Range: 10/1/2025 - 10/31/2025, Account: All, Status: All

Clearing No	Date		Account No	Account Type	Amount	Status
	Year	Fund	Payment No	Amount		
	2026	21	204		\$17,069.44	
	2026	21	198		\$1,090.18	
			2026 21 Total		\$18,159.62	
78	10/21/2025		101	AC	\$1,462.01	Posted
	2026	11	2132		\$285.00	
	2026	11	1521		\$201.39	
	2026	11	1512		\$124.75	
	2026	11	210		\$230.87	
			2026 11 Total		\$842.01	
	2026	21	229		\$30.00	
	2026	21	221		\$590.00	
			2026 21 Total		\$620.00	
79	10/22/2025		101	AC	\$403,439.06	Posted
	2025	86	79		\$186,455.91	
			2025 86 Total		\$186,455.91	
	2026	11	1549		\$73.06	
	2026	11	1656		\$304.50	
	2026	11	1536		\$4,512.50	
	2026	11	949		\$159.50	
			2026 11 Total		\$5,049.56	
	2026	86	4		\$211,933.59	
			2026 86 Total		\$211,933.59	
80	10/23/2025		101	AC	\$2,293.74	Posted
	2026	11	2139		\$50.00	
	2026	11	2138		\$650.00	
	2026	11	2135		\$558.91	
	2026	11	2129		\$115.60	
	2026	11	2122		\$469.23	
	2026	11	2134		\$450.00	
			2026 11 Total		\$2,293.74	
81	10/24/2025		101	AC	\$28,693.03	Posted
	2026	11	2170		\$290.74	
	2026	11	2146		\$1,602.88	
	2026	11	2136		\$225.00	
	2026	11	2118		\$100.00	
	2026	11	2178		\$18,998.10	
	2026	11	2148		\$2,657.58	
	2026	11	2173		\$1,207.30	
	2026	11	2149		\$1,141.11	
	2026	11	2156		\$371.73	
	2026	11	2167		\$934.68	
			2026 11 Total		\$27,529.12	
	2026	21	234		\$7.69	
	2026	21	235		\$733.45	
	2026	21	243		\$422.77	
			2026 21 Total		\$1,163.91	
82	10/27/2025		101	AC	\$347,110.21	Posted

Shawnee Public Schools

Payment Clearing Register

Options: Fund: Governmental Funds, Show Detail: Yes, Date Range: 10/1/2025 - 10/31/2025, Account: All, Status: All

Clearing No	Date		Account No	Account Type	Amount	Status
	Year	Fund	Payment No	Amount		
	2026	11	2168		\$3,168.00	
	2026	11	2159		\$331.16	
	2026	11	2152		\$405.00	
	2026	11	2151		\$23,315.88	
	2026	11	2147		\$5,079.50	
	2026	11	2145		\$2,055.00	
	2026	11	2131		\$359.47	
	2026	11	2128		\$50.00	
	2026	11	2126		\$270,696.06	
	2026	11	2125		\$3,011.80	
	2026	11	2124		\$18,187.80	
	2026	11	2123		\$3,512.44	
	2026	11	2112		\$252.90	
	2026	11	1503		\$2,985.00	
	2026	11	822		\$208.03	
	2026	11	2175		\$2,135.35	
	2026	11	2158		\$57.24	
			2026 11 Total		\$335,810.63	
	2026	21	227		\$6,428.40	
	2026	21	226		\$53.00	
	2026	21	225		\$494.38	
	2026	21	224		\$68.96	
	2026	21	240		\$4,254.84	
			2026 21 Total		\$11,299.58	
83		10/28/2025	101	AC		\$101,443.46 Posted
	2026	11	2176		\$300.00	
	2026	11	2163		\$603.46	
	2026	11	2160		\$11,962.06	
	2026	11	2157		\$23.09	
	2026	11	2111		\$39.00	
	2026	11	1538		\$750.00	
	2026	11	2119		\$583.38	
	2026	11	2177		\$250.00	
			2026 11 Total		\$14,510.99	
	2026	21	246		\$624.02	
	2026	21	239		\$304.12	
	2026	21	237		\$85.00	
			2026 21 Total		\$1,013.14	
	2026	33	14		\$85,919.33	
			2026 33 Total		\$85,919.33	
84		10/29/2025	101	AC		\$747,588.67 Posted
	2026	11	2164		\$10,064.67	
	2026	11	2155		\$1,760.00	
	2026	11	2150		\$68.24	
	2026	11	2130		\$50.00	
	2026	11	2117		\$1,060.00	
	2026	11	2142		\$309,678.12	

Shawnee Public Schools

Payment Clearing Register

Options: Fund: Governmental Funds, Show Detail: Yes, Date Range: 10/1/2025 - 10/31/2025, Account: All, Status: All

Clearing No	Date		Account No	Account Type	Amount	Status
	Year	Fund	Payment No	Amount		
	2026	11	2113		\$12,046.00	
	2026	11	2133		\$60,201.00	
			2026 11 Total		\$394,928.03	
	2026	21	245		\$190.00	
	2026	21	242		\$2,259.62	
	2026	21	238		\$145.50	
	2026	21	236		\$343,631.28	
	2026	21	231		\$4,968.24	
	2026	21	230		\$1,466.00	
			2026 21 Total		\$352,660.64	
85		10/30/2025	101	AC		\$39,712.83 Posted
	2026	11	2166		\$378.76	
	2026	11	2116		\$5,806.10	
	2026	11	2114		\$26,620.50	
	2026	11	2115		\$5,544.85	
	2026	11	2179		\$436.64	
			2026 11 Total		\$38,786.85	
	2026	21	218		\$569.30	
	2026	21	220		\$103.70	
	2026	21	219		\$180.00	
	2026	21	249		\$72.98	
			2026 21 Total		\$925.98	
86		10/31/2025	101	AC		\$187,676.02 Posted
	2026	11	2194		\$363.46	
	2026	11	2188		\$56.42	
	2026	11	2172		\$91.95	
	2026	11	2154		\$799.50	
	2026	11	2153		\$61,012.24	
	2026	11	2180		\$594.01	
	2026	11	2182		\$11,173.91	
	2026	11	2206		\$534.40	
	2026	11	2205		\$300.00	
			2026 11 Total		\$74,925.89	
	2026	12	3		\$63.34	
			2026 12 Total		\$63.34	
	2026	21	244		\$35,157.12	
	2026	21	250		\$9.89	
	2026	21	253		\$63,282.38	
	2026	21	251		\$36.96	
	2026	21	247		\$7,955.00	
	2026	21	248		\$6,000.00	
			2026 21 Total		\$112,441.35	
	2026	34	7		\$23.94	
			2026 34 Total		\$23.94	
	2026	81	10		\$221.50	
			2026 81 Total		\$221.50	

Year and Fund Totals:

Payment Clearing Register

Options: Fund: Governmental Funds, Show Detail: Yes, Date Range: 10/1/2025 - 10/31/2025, Account: All, Status: All

2025	11	\$1,125.00
2025	86	\$186,455.91
2026	11	\$3,600,115.20
2026	12	\$163.33
2026	21	\$721,756.64
2026	33	\$137,672.03
2026	34	\$368.11
2026	81	\$2,336.19
2026	86	\$211,933.59

Total Payment Clearing Posted = \$4,861,926.00

Total Payment Clearing Not Posted = \$0.00

Receipt Analysis

Options: Date Range: 10/1/2025 - 10/31/2025

Year	Receipt No	Date	Received From	Amount
11 GEN FUND-FOR OP				
2026	147	10/1/2025	POTT CO	\$2,765.08
2026	147	10/1/2025	POTT CO	\$26,195.03
2026	147	10/1/2025	POTT CO	\$594.79
2026	147	10/1/2025	POTT CO	\$7,794.17
2026	147	10/1/2025	POTT CO	\$103.14
2026	148	10/1/2025	CN - D SEEBECK	\$245.00
2026	148	10/1/2025	CN - D SEEBECK	\$2.00
2026	148	10/1/2025	CN - D SEEBECK	\$5.15
2026	148	10/1/2025	CN - D SEEBECK	\$5.15
2026	148	10/1/2025	CN - D SEEBECK	\$1.00
2026	148	10/1/2025	CN - D SEEBECK	\$5.15
2026	148	10/1/2025	CN - D SEEBECK	\$29.00
2026	148	10/1/2025	CN - D SEEBECK	\$6.00
2026	148	10/1/2025	CN - D SEEBECK	\$30.75
2026	148	10/1/2025	CN - D SEEBECK	\$49.50
2026	149	10/1/2025	JOSHUA CHISM - SPS PUP PACK - DAYCARE	\$654.00
2026	150	10/1/2025	OKARCHE & VANOSS PS - BASEBALL FIELD RENTAL	\$50.00
2026	150	10/1/2025	OKARCHE & VANOSS PS - BASEBALL FIELD RENTAL	\$50.00
2026	152	10/2/2025	CN - D SEEBECK	\$4.50
2026	152	10/2/2025	CN - D SEEBECK	\$15.45
2026	152	10/2/2025	CN - D SEEBECK	\$34.00
2026	152	10/2/2025	CN - D SEEBECK	\$2.00
2026	152	10/2/2025	CN - D SEEBECK	\$18.40
2026	152	10/2/2025	CN - D SEEBECK	\$54.00
2026	153	10/2/2025	BIG FIRE SHOWCASE - BASEBALL FIELD RENTAL	\$200.00
2026	154	10/3/2025	SPS - PUP PACK MEALS	\$1,358.55
2026	155	10/3/2025	CN - D SEEBECK	\$1.00
2026	155	10/3/2025	CN - D SEEBECK	\$15.45
2026	155	10/3/2025	CN - D SEEBECK	\$49.75
2026	155	10/3/2025	CN - D SEEBECK	\$3.00
2026	155	10/3/2025	CN - D SEEBECK	\$20.00
2026	155	10/3/2025	CN - D SEEBECK	\$29.25
2026	156	10/3/2025	KELSEY BROOKS - SPS PUP PACK - DAYCARE	\$1,368.00
2026	157	10/6/2025	MSB - HS, JEFF, WR	\$10.00
2026	157	10/6/2025	MSB - HS, JEFF, WR	\$20.00
2026	157	10/6/2025	MSB - HS, JEFF, WR	\$50.00
2026	157	10/6/2025	MSB - HS, JEFF, WR	\$20.00
2026	158	10/6/2025	CN - D SEEBECK	\$9.00
2026	158	10/6/2025	CN - D SEEBECK	\$5.15
2026	158	10/6/2025	CN - D SEEBECK	\$95.30
2026	158	10/6/2025	CN - D SEEBECK	\$55.25
2026	158	10/6/2025	CN - D SEEBECK	\$5.15
2026	159	10/7/2025	CN - D SEEBECK	\$4.00
2026	159	10/7/2025	CN - D SEEBECK	\$5.15
2026	159	10/7/2025	CN - D SEEBECK	\$48.65
2026	159	10/7/2025	CN - D SEEBECK	\$1.00
2026	159	10/7/2025	CN - D SEEBECK	\$5.15
2026	159	10/7/2025	CN - D SEEBECK	\$33.25
2026	159	10/7/2025	CN - D SEEBECK	\$3.00
2026	159	10/7/2025	CN - D SEEBECK	\$35.75
2026	159	10/7/2025	CN - D SEEBECK	\$54.50
2026	160	10/8/2025	CN - D SEEBECK	\$5.15
2026	160	10/8/2025	CN - D SEEBECK	\$0.75
2026	160	10/8/2025	CN - D SEEBECK	\$25.75
2026	160	10/8/2025	CN - D SEEBECK	\$51.25
2026	160	10/8/2025	CN - D SEEBECK	\$20.00
2026	161	10/9/2025	CN - D SEEBECK	\$4.00

Shawnee Public Schools

Receipt Analysis

Options: Date Range: 10/1/2025 - 10/31/2025

Year	Receipt No	Date	Received From	Amount
2026	161	10/9/2025	CN - D SEEBECK	\$41.00
2026	161	10/9/2025	CN - D SEEBECK	\$35.45
2026	161	10/9/2025	CN - D SEEBECK	\$44.50
2026	162	10/9/2025	BIG FIRE SHOWCASE - BASEBALL FIELD RENTAL	\$100.00
2026	163	10/10/2025	OTC	\$6,512.48
2026	163	10/10/2025	OTC	\$199.88
2026	163	10/10/2025	OTC	\$125,723.33
2026	164	10/10/2025	SHAWNEE BAND BOOSTERS ASSOC - BAND TECHS	\$1,527.00
2026	165	10/10/2025	CN - D SEEBECK	\$2.00
2026	165	10/10/2025	CN - D SEEBECK	\$15.30
2026	165	10/10/2025	CN - D SEEBECK	\$59.50
2026	165	10/10/2025	CN - D SEEBECK	\$5.00
2026	165	10/10/2025	CN - D SEEBECK	\$28.25
2026	166	10/10/2025	CN - D SEEBECK	\$2.00
2026	166	10/10/2025	CN - D SEEBECK	\$5.15
2026	166	10/10/2025	CN - D SEEBECK	\$54.00
2026	166	10/10/2025	CN - D SEEBECK	\$36.05
2026	166	10/10/2025	CN - D SEEBECK	\$15.45
2026	166	10/10/2025	CN - D SEEBECK	\$66.75
2026	167	10/14/2025	OSDE - TITLE I SCHOOL IMPROVEMENT - 515	\$10,371.36
2026	168	10/16/2025	OSDE - FOUNDATION & SALARY INCENTIVE AID	\$1,574,060.47
2026	169	10/16/2025	OSDE - CERT HEALTH ALLOW - 334	\$195,471.36
2026	170	10/16/2025	OSDE - SUPPORT HEALTH ALLOW - 335	\$97,735.68
2026	171	10/16/2025	OSDE - CERT HEALTH ALLOW IN LIEU OF FBA - 331	\$4,140.77
2026	172	10/16/2025	OSDE - SUPPORT HEALTH ALLOW IN LIEU OF FBA - 332	\$19,871.92
2026	173	10/16/2025	OSDE - TEXTBOOKS - 333	\$18,378.13
2026	174	10/20/2025	MSB - HS	\$166.00
2026	175	10/20/2025	SPS PUP PACK - DAYCARE - VARIOUS EMPLOYEES	\$8,448.00
2026	176	10/20/2025	STATE OF OK - DEPT AG FOOD & FORESTRY	\$191.52
2026	176	10/20/2025	STATE OF OK - DEPT AG FOOD & FORESTRY	\$191.52
2026	176	10/20/2025	STATE OF OK - DEPT AG FOOD & FORESTRY	\$191.52
2026	176	10/20/2025	STATE OF OK - DEPT AG FOOD & FORESTRY	\$191.52
2026	176	10/20/2025	STATE OF OK - DEPT AG FOOD & FORESTRY	\$417.62
2026	176	10/20/2025	STATE OF OK - DEPT AG FOOD & FORESTRY	\$510.72
2026	177	10/20/2025	OSDE - PROJECT RESPECT LEA - 780	\$53,976.32
2026	178	10/20/2025	COL - SCHOOL LAND EARNINGS	\$49,753.18
2026	179	10/20/2025	OSDE - CACFP - 769	\$1,363.59
2026	179	10/20/2025	OSDE - CACFP - 769	\$5,022.72
2026	179	10/20/2025	OSDE - CACFP - 769	\$1,201.72
2026	179	10/20/2025	OSDE - CACFP - 769	\$6,415.74
2026	179	10/20/2025	OSDE - CACFP - 769	\$1,505.83
2026	179	10/20/2025	OSDE - CACFP - 769	\$6,239.16
2026	179	10/20/2025	OSDE - CACFP - 769	\$1,329.25
2026	179	10/20/2025	OSDE - CACFP - 769	\$5,836.95
2026	179	10/20/2025	OSDE - CACFP - 769	\$29.43
2026	181	10/21/2025	CN - D SEEBECK	\$17.00
2026	181	10/21/2025	CN - D SEEBECK	\$1.00
2026	181	10/21/2025	CN - D SEEBECK	\$40.45
2026	181	10/21/2025	CN - D SEEBECK	\$66.75
2026	182	10/21/2025	JAMES & ALEXANDRA WATKINS - SPS PUP PACK - DAYCARE	\$654.00
2026	183	10/22/2025	OK HEALTH CARE AUTH - MEDICAID	\$10,734.49
2026	184	10/22/2025	CN - D SEEBECK	\$2.00
2026	184	10/22/2025	CN - D SEEBECK	\$70.30
2026	184	10/22/2025	CN - D SEEBECK	\$60.75
2026	184	10/22/2025	CN - D SEEBECK	\$20.00
2026	184	10/22/2025	CN - D SEEBECK	\$1.00
2026	184	10/22/2025	CN - D SEEBECK	\$23.25
2026	184	10/22/2025	CN - D SEEBECK	\$5.15

Receipt Analysis

Options: Date Range: 10/1/2025 - 10/31/2025

Year	Receipt No	Date	Received From	Amount
2026	185	10/23/2025	CN - D SEEBECK	\$100.00
2026	185	10/23/2025	CN - D SEEBECK	\$11.00
2026	185	10/23/2025	CN - D SEEBECK	\$40.60
2026	185	10/23/2025	CN - D SEEBECK	\$61.00
2026	185	10/23/2025	CN - D SEEBECK	\$2.00
2026	187	10/23/2025	EMILY FLEMING - CPR	\$280.00
2026	188	10/24/2025	OSDE - NEW TEACHER SIGNING BONUS - K MCCOY	\$10,765.00
2026	189	10/24/2025	OSDE - FRESH FRUIT/VEG - SEPTEMBER	\$571.78
2026	189	10/24/2025	OSDE - FRESH FRUIT/VEG - SEPTEMBER	\$612.48
2026	189	10/24/2025	OSDE - FRESH FRUIT/VEG - SEPTEMBER	\$612.48
2026	189	10/24/2025	OSDE - FRESH FRUIT/VEG - SEPTEMBER	\$449.35
2026	189	10/24/2025	OSDE - FRESH FRUIT/VEG - SEPTEMBER	\$694.21
2026	190	10/24/2025	CN - D SEEBECK	\$7.75
2026	190	10/24/2025	CN - D SEEBECK	\$25.15
2026	190	10/24/2025	CN - D SEEBECK	\$26.35
2026	190	10/24/2025	CN - D SEEBECK	\$23.25
2026	190	10/24/2025	CN - D SEEBECK	\$63.25
2026	190	10/24/2025	CN - D SEEBECK	\$5.15
2026	191	10/27/2025	MSB - HS, SECC, JEFF, HM	\$55.00
2026	191	10/27/2025	MSB - HS, SECC, JEFF, HM	\$20.00
2026	191	10/27/2025	MSB - HS, SECC, JEFF, HM	\$10.00
2026	191	10/27/2025	MSB - HS, SECC, JEFF, HM	\$35.00
2026	193	10/27/2025	CN - D SEEBECK	\$0.50
2026	193	10/27/2025	CN - D SEEBECK	\$10.30
2026	193	10/27/2025	CN - D SEEBECK	\$49.00
2026	193	10/27/2025	CN - D SEEBECK	\$20.00
2026	194	10/27/2025	SPS - PUP PACK MEALS	\$2,135.35
2026	196	10/28/2025	CN - D SEEBECK	\$5.15
2026	196	10/28/2025	CN - D SEEBECK	\$1.00
2026	196	10/28/2025	CN - D SEEBECK	\$16.00
2026	196	10/28/2025	CN - D SEEBECK	\$3.00
2026	196	10/28/2025	CN - D SEEBECK	\$18.25
2026	196	10/28/2025	CN - D SEEBECK	\$2.00
2026	196	10/28/2025	CN - D SEEBECK	\$19.00
2026	196	10/28/2025	CN - D SEEBECK	\$5.15
2026	196	10/28/2025	CN - D SEEBECK	\$1.00
2026	196	10/28/2025	CN - D SEEBECK	\$36.05
2026	196	10/28/2025	CN - D SEEBECK	\$67.45
2026	197	10/29/2025	CN - D SEEBECK	\$70.15
2026	197	10/29/2025	CN - D SEEBECK	\$1.00
2026	197	10/29/2025	CN - D SEEBECK	\$86.05
2026	197	10/29/2025	CN - D SEEBECK	\$59.25
2026	197	10/29/2025	CN - D SEEBECK	\$1.00
2026	197	10/29/2025	CN - D SEEBECK	\$5.15
2026	197	10/29/2025	CN - D SEEBECK	\$34.25
2026	197	10/29/2025	CN - D SEEBECK	\$5.65
2026	198	10/29/2025	BIG FIRE SHOWCASE - BASEBALL FIELD RENTAL	\$100.00
2026	199	10/30/2025	CN - D SEEBECK	\$5.15
2026	199	10/30/2025	CN - D SEEBECK	\$0.50
2026	199	10/30/2025	CN - D SEEBECK	\$0.50
2026	199	10/30/2025	CN - D SEEBECK	\$10.30
2026	199	10/30/2025	CN - D SEEBECK	\$49.85
2026	199	10/30/2025	CN - D SEEBECK	\$7.00
2026	199	10/30/2025	CN - D SEEBECK	\$37.50
2026	200	10/31/2025	CN - D SEEBECK	\$15.00
2026	200	10/31/2025	CN - D SEEBECK	\$3.75
2026	200	10/31/2025	CN - D SEEBECK	\$32.70
2026	200	10/31/2025	CN - D SEEBECK	\$8.50

Receipt Analysis

Options: Date Range: 10/1/2025 - 10/31/2025

Year	Receipt No	Date	Received From	Amount
2026	200	10/31/2025	CN - D SEEBECK	\$1.50
2026	200	10/31/2025	CN - D SEEBECK	\$125.75
2026	200	10/31/2025	CN - D SEEBECK	\$40.85
2026	201	10/31/2025	MSB - HS, JEFF	\$20.00
2026	201	10/31/2025	MSB - HS, JEFF	\$50.00
11 GEN FUND-FOR OP Total				\$2,269,138.04
21 BUILDING				
2026	147	10/1/2025	POTT CO	\$3,738.95
2026	192	10/27/2025	DJ\$ INC - REIM FOR DAMAGE TO AG GATE	\$1,000.00
2026	202	10/31/2025	FIRST UNITED - INTEREST - OCTOBER	\$35,862.74
21 BUILDING Total				\$40,601.69
41 41 SINKING				
2026	147	10/1/2025	POTT CO	\$18,446.30
41 41 SINKING Total				\$18,446.30
60 60 SCHOOL ACTIVITY FNDS				
2026	233	10/1/2025	SHAWNEE SWIM BOOSTER - CAPS/BACKPACKS	\$2,850.00
2026	234	10/1/2025	TODD BOYER - BASEBALL CHAMPIONSHIP HATS	\$500.00
2026	235	10/1/2025	VOLLEYBALL VS LAWTON MCARTHUR	\$331.00
2026	236	10/1/2025	HS CHOIR DUES	\$363.00
2026	237	10/1/2025	FOOTBALL VS EL RENO	\$1,166.00
2026	238	10/1/2025	HAT DAY FR# 505-11	\$16.00
2026	239	10/1/2025	JASMINE MORAN FIELD TRIP	\$128.00
2026	240	10/1/2025	JEFF FY26 CHOC BAR FR 130-1	\$960.00
2026	241	10/2/2025	TONI'S FUNKY CANTINA - FR 505-10/FY26	\$32.50
2026	241	10/2/2025	TONI'S FUNKY CANTINA - FR 505-10/FY26	\$32.50
2026	242	10/2/2025	CHICAGO BLACKHAWKS FOUND - NA AMERICAN CLUB	\$500.00
2026	243	10/2/2025	FFA FY26 FALL MEAT SALE FR#705-2	\$90.00
2026	244	10/2/2025	DAMAGED YONDR - D CARTER	\$10.00
2026	245	10/2/2025	LOST BUS TAG - A NANAETO	\$5.00
2026	246	10/2/2025	WR RECORDERS - FR 145-4 FY26	\$100.00
2026	247	10/2/2025	JASMINE MORAN FIELD TRIP	\$14.00
2026	248	10/2/2025	JASMINE MORAN FIELD TRIP	\$22.00
2026	249	10/2/2025	JEFF MUSIC PROG SHIRTS FR 130-4 FY26	\$30.00
2026	250	10/2/2025	CTSWS - JEFF	\$90.00
2026	251	10/2/2025	JEFF FY26 CHOC BAR FR 130-1	\$600.00
2026	252	10/2/2025	HM HOSPITALITY	\$100.00
2026	253	10/3/2025	FFA FY26 FALL MEAT SALE FR#705-2	\$60.00
2026	254	10/3/2025	FFA FY26 FALL MEAT SALE FR#705-2	\$361.00
2026	255	10/3/2025	LOST BUS TAGS - EH/DP/MS	\$15.00
2026	256	10/3/2025	LOST BUS TAGS - AD/IB/NH/GD	\$20.00
2026	257	10/3/2025	LOST BUS TAG - T HARDEMAN	\$5.00
2026	258	10/3/2025	WR FALL BOOK FAIR 145-3 FY26	\$653.73
2026	259	10/3/2025	JEFF FY26 CHOC BAR FR 130-1	\$180.00
2026	260	10/3/2025	PUMPKIN PATCH FIELD TRIP	\$99.00
2026	261	10/6/2025	STRIPE - FOOTBALL/SOFTBALL/VOLLEYBALL	\$40.00
2026	261	10/6/2025	STRIPE - FOOTBALL/SOFTBALL/VOLLEYBALL	\$281.00
2026	261	10/6/2025	STRIPE - FOOTBALL/SOFTBALL/VOLLEYBALL	\$59.00
2026	261	10/6/2025	STRIPE - FOOTBALL/SOFTBALL/VOLLEYBALL	\$47.00
2026	261	10/6/2025	STRIPE - FOOTBALL/SOFTBALL/VOLLEYBALL	\$108.00
2026	262	10/6/2025	SWIMMING CALANDER FR 705-16	\$220.00
2026	263	10/6/2025	SWIMMING CALANDER FR 705-16	\$345.00
2026	264	10/6/2025	FFA FY26 FALL MEAT SALE FR#705-2	\$165.00
2026	265	10/6/2025	ORR FAMILY FARM FIELD TRIP-2ND GR	\$12.00
2026	266	10/6/2025	JASMINE MORAN FIELD TRIP	\$120.00
2026	267	10/6/2025	JASMINE MORAN FIELD TRIP	\$297.00
2026	268	10/6/2025	WR FALL BOOK FAIR 145-3 FY26	\$1,707.33
2026	269	10/7/2025	FOOTBALL VS BOOKER T WASHINGTON	\$3,720.00
2026	270	10/7/2025	LOST BUS TAG - B BYRD	\$5.00

Receipt Analysis

Options: Date Range: 10/1/2025 - 10/31/2025

Year	Receipt No	Date	Received From	Amount
2026	271	10/7/2025	CORNERSTONE FIELD TRIP (POND)	\$429.00
2026	272	10/7/2025	WR FALL BOOK FAIR 145-3 FY26	\$1,515.54
2026	273	10/8/2025	JV FOOTBALL VS CARL ALBERT	\$758.00
2026	274	10/8/2025	WR FALL BOOK FAIR 145-3 FY26	\$435.56
2026	275	10/8/2025	ORR FAMILY FARM FIELD TRIP-2ND GR	\$84.00
2026	276	10/8/2025	SNACK SHACK FR 145-6 FY26	\$106.00
2026	277	10/8/2025	JASMINE MORAN FIELD TRIP	\$52.00
2026	278	10/8/2025	WR FALL BOOK FAIR 145-3 FY26	\$290.12
2026	279	10/8/2025	PUMPKIN PATCH FIELD TRIP	\$72.00
2026	280	10/8/2025	CTSWS - JEFF	\$60.00
2026	281	10/8/2025	JEFF FY26 CHOC BAR FR 130-1	\$360.00
2026	282	10/9/2025	REIMBURSEMENT FOR BROKEN/LOST TECHNOLOGY	\$38.00
2026	283	10/9/2025	TONI'S FUNKY CANTINA - FR 505-10/FY26	\$30.00
2026	283	10/9/2025	TONI'S FUNKY CANTINA - FR 505-10/FY26	\$30.00
2026	284	10/9/2025	BANCFIRST DONATION - JTA	\$250.00
2026	285	10/9/2025	FIELD TRIP - MCALISTER	\$153.00
2026	286	10/9/2025	WR FALL BOOK FAIR 145-3 FY26/CASH RETURN	\$100.00
2026	286	10/9/2025	WR FALL BOOK FAIR 145-3 FY26/CASH RETURN	\$228.93
2026	287	10/9/2025	MS CHOIR DUES/DONATION	\$203.00
2026	287	10/9/2025	MS CHOIR DUES/DONATION	\$25.00
2026	288	10/9/2025	PUMPKIN PATCH FIELD TRIP	\$126.00
2026	289	10/9/2025	JEFF FY26 CHOC BAR FR 130-1	\$180.00
2026	290	10/10/2025	CO JEAN DAYS FR# 050-7 (W TUCKER)	\$5.00
2026	291	10/10/2025	DAMAGED YONDR - D MAURICIO	\$30.00
2026	292	10/10/2025	SAGE FR 705-27 - DONATION PLEDGES	\$635.00
2026	293	10/10/2025	AP TESTING	\$20.00
2026	294	10/10/2025	OK SPECIAL OLYMPICS/BANCFIRST DONATIONS	\$650.00
2026	295	10/10/2025	LOST BUS TAGS/DAMAGE TO BUS SEAT	\$65.00
2026	295	10/10/2025	LOST BUS TAGS/DAMAGE TO BUS SEAT	\$75.00
2026	296	10/10/2025	ORR FAMILY FARM FIELD TRIP-2ND GR	\$72.00
2026	297	10/10/2025	WR HONOR CHOIR T-SHIRTS 145-5	\$120.00
2026	298	10/10/2025	ORR FAMILY FARM FIELD TRIP-2ND GR/DONATION	\$100.00
2026	298	10/10/2025	ORR FAMILY FARM FIELD TRIP-2ND GR/DONATION	\$28.00
2026	299	10/10/2025	JASMINE MORAN FIELD TRIP	\$13.00
2026	300	10/10/2025	SEQU POP CORN/PICKLES FR 137-3	\$135.00
2026	301	10/10/2025	BANCFIRST DONATION - HM GARDEN CLUB	\$250.00
2026	302	10/10/2025	HM POPCORN & PICKLES FR# 120-1 FY26	\$345.75
2026	302	10/10/2025	HM POPCORN & PICKLES FR# 120-1 FY26	\$115.25
2026	303	10/14/2025	STRIPE - FOOTBALL/VOLLEYBALL/DRAMA	\$2,255.00
2026	303	10/14/2025	STRIPE - FOOTBALL/VOLLEYBALL/DRAMA	\$333.00
2026	303	10/14/2025	STRIPE - FOOTBALL/VOLLEYBALL/DRAMA	\$132.00
2026	303	10/14/2025	STRIPE - FOOTBALL/VOLLEYBALL/DRAMA	\$75.00
2026	304	10/20/2025	STRIPE - FAMILY PASSES/FOOTBALL/DRAMA	\$125.00
2026	304	10/20/2025	STRIPE - FAMILY PASSES/FOOTBALL/DRAMA	\$3,230.00
2026	304	10/20/2025	STRIPE - FAMILY PASSES/FOOTBALL/DRAMA	\$554.00
2026	304	10/20/2025	STRIPE - FAMILY PASSES/FOOTBALL/DRAMA	\$60.00
2026	305	10/20/2025	VOLLEYBALL VS NEWCASTLE	\$747.00
2026	306	10/20/2025	SWIMMING CALANDER FR 705-16	\$660.00
2026	307	10/20/2025	HS CHOIR DUES	\$80.00
2026	308	10/20/2025	GIBSONS & REYNOLDS PC - DRAMA DONATION	\$225.00
2026	309	10/20/2025	SWIMMING CALANDER FR 705-16	\$300.00
2026	310	10/20/2025	OSSAA - STATE FALL BASEBALL	\$5,902.00
2026	311	10/20/2025	CO JEAN DAYS FR# 050-7	\$198.00
2026	312	10/20/2025	FFA FY26 FALL MEAT SALE FR#705-2	\$60.00
2026	313	10/20/2025	ROBOTICS - LED LIGHTS FR#705-23	\$120.00
2026	314	10/20/2025	SAGE FR 705-27 - DONATION PLEDGES	\$100.00
2026	315	10/20/2025	FALL FIELD TRIP (GOERS)	\$164.00
2026	316	10/20/2025	LOST BUS TAG - A LASKEY	\$5.00

Receipt Analysis

Options: Date Range: 10/1/2025 - 10/31/2025

Year	Receipt No	Date	Received From	Amount
2026	317	10/21/2025	OSSAA - STATE FALL BASEBALL	\$2,730.00
2026	318	10/21/2025	FOOTBALL VS COWETA	\$4,545.00
2026	319	10/21/2025	ONE ACT FY26	\$1,060.00
2026	320	10/21/2025	ROBOTICS - LED LIGHTS FR#705-23	\$30.00
2026	321	10/21/2025	ADA BOTTLING CO - SEPT COMMISSION	\$207.88
2026	322	10/21/2025	SAGE FR 705-27 - DONATION PLEDGES	\$210.00
2026	323	10/21/2025	SHUTTERFLY - MS YEARBOOK COMMISSION	\$933.41
2026	324	10/21/2025	LOST BUS TAG - T DAN	\$5.00
2026	325	10/21/2025	FALL FIELD TRIP (COWDER)	\$141.00
2026	326	10/21/2025	2nd GR FIELD TRIP	\$48.00
2026	327	10/21/2025	SCHOOL STORE.COM - FR 145-10	\$533.97
2026	327	10/21/2025	SCHOOL STORE.COM - FR 145-10	\$133.49
2026	328	10/21/2025	LOST BUS TAGS - E STATES/Z DEDMAN	\$10.00
2026	329	10/22/2025	ONE ACT FY26	\$1,081.50
2026	330	10/22/2025	TFCU - SWIM DONATION	\$448.00
2026	331	10/22/2025	SHS VOLLEYBALL BOOSTERS - DONATION	\$1,875.00
2026	332	10/22/2025	FOOTBALL VS DEL CITY	\$393.00
2026	333	10/22/2025	FOOTBALL VS NOBLE	\$1,335.00
2026	334	10/22/2025	FOOTBALL	\$125.00
2026	335	10/22/2025	SHAWNEE MILLING COMPANY-MS ACADEMIC TEAM	\$200.00
2026	336	10/22/2025	OKLAHOMA SHIRT CO - TOY FR 050-6 COMMISSION	\$425.99
2026	337	10/23/2025	STATE FAIR/T&D MEATS	\$75.00
2026	337	10/23/2025	STATE FAIR/T&D MEATS	\$17.47
2026	338	10/23/2025	AP TESTING	\$210.00
2026	339	10/23/2025	REIMB FOR BROKEN/LOST TECHNOLOGY/BUS TAG/DON	\$38.00
2026	339	10/23/2025	REIMB FOR BROKEN/LOST TECHNOLOGY/BUS TAG/DON	\$2.00
2026	339	10/23/2025	REIMB FOR BROKEN/LOST TECHNOLOGY/BUS TAG/DON	\$5.00
2026	340	10/23/2025	8TH GR HAT DAY FR 505-6	\$80.00
2026	341	10/23/2025	LOST BUS TAGS (DP/JG/LA/CG/BC/BT/SS/DK/BM)	\$45.00
2026	342	10/23/2025	FALL FIELD TRIP (NEAL)	\$144.00
2026	343	10/23/2025	FALL FIELD TRIP (SAVAGE)	\$153.00
2026	344	10/23/2025	FALL FIELD TRIP (OGDEN)	\$135.00
2026	345	10/23/2025	FALL FIELD TRIP (FLORA)	\$162.00
2026	346	10/23/2025	FALL FIELD TRIP (BENNETT)	\$142.00
2026	347	10/23/2025	FALL FIELD TRIP (MCCABE)	\$153.00
2026	348	10/23/2025	FALL FIELD TRIP	\$18.00
2026	349	10/23/2025	LOST BUS TAG - N SHAW	\$5.00
2026	350	10/23/2025	HM FY26 CANDY BAR FR 120-3	\$1,020.00
2026	351	10/24/2025	GF CENTRAL PLASTICS - DONATION FENCE PANELS	\$1,080.00
2026	352	10/24/2025	SAGE FR 705-27 - DONATION PLEDGES/ZOO TICKETS	\$100.00
2026	352	10/24/2025	SAGE FR 705-27 - DONATION PLEDGES/ZOO TICKETS	\$150.00
2026	353	10/24/2025	ROBOTICS - LED LIGHTS FR#705-23	\$15.00
2026	354	10/24/2025	AP TESTING	\$140.00
2026	355	10/24/2025	LOST BUS TAGE BERGER	\$5.00
2026	356	10/24/2025	TONI'S FUNKY CANTINA - FR 505-10/FY26	\$28.50
2026	356	10/24/2025	TONI'S FUNKY CANTINA - FR 505-10/FY26	\$28.50
2026	357	10/24/2025	LOST BUS TAG - H HARRIS	\$5.00
2026	358	10/24/2025	FALL FIELD TRIP (WALKER)	\$147.00
2026	359	10/24/2025	FALL FIELD TRIP (MCKEY)	\$135.00
2026	360	10/27/2025	STRIPE - FOOTBALL/DEL CITY/TULSA EDISON	\$111.00
2026	360	10/27/2025	STRIPE - FOOTBALL/DEL CITY/TULSA EDISON	\$100.00
2026	361	10/27/2025	FOOTBALL VS TULSA EDISON	\$3,080.00
2026	362	10/27/2025	HAT DAY FR# 505-11	\$26.00
2026	363	10/27/2025	2nd GR FIELD TRIP	\$85.00
2026	364	10/27/2025	LOST BUS TAG - A FACTOR	\$5.00
2026	365	10/27/2025	JEFF 4th GR SHIRTS 130-4	\$150.00
2026	366	10/27/2025	JEFF HOSPITALITY DONATIONS	\$50.00
2026	367	10/27/2025	CTSWS - JEFF	\$30.00

Receipt Analysis

Options: Date Range: 10/1/2025 - 10/31/2025

Year	Receipt No	Date	Received From	Amount
2026	368	10/27/2025	LOST BUS TAG - S CASTRO	\$5.00
2026	369	10/27/2025	PUMPKIN PATCH FIELD TRIP	\$99.00
2026	370	10/27/2025	POP/VENDING FR# 070-1	\$69.00
2026	371	10/28/2025	MS TICKETS TO FOOTBALL GAME	\$45.00
2026	372	10/28/2025	HM FALL BOOK FAIR 120-2 FY26	\$147.31
2026	373	10/28/2025	HM FY26 CANDY BAR FR 120-3	\$3,065.00
2026	374	10/29/2025	BAND DUES	\$834.00
2026	375	10/29/2025	CC ENTRY FEES - GUTHRIE/EL RENO/NOBLE	\$450.00
2026	376	10/29/2025	SIMPLE MODERN CUPS FR 705-3	\$160.00
2026	377	10/29/2025	FACE PAINTING FR#705-15	\$51.00
2026	378	10/29/2025	2nd GR FIELD TRIP	\$110.00
2026	379	10/29/2025	SNACK SHACK FR 145-6 FY26	\$104.00
2026	380	10/29/2025	CTSWS - WR	\$280.00
2026	381	10/29/2025	WR HONOR CHOIR T-SHIRTS 145-5	\$60.00
2026	382	10/29/2025	HM FALL BOOK FAIR 120-2 FY26	\$268.00
2026	383	10/29/2025	HM FY26 CANDY BAR FR 120-3	\$1,260.00
2026	384	10/30/2025	SIMPLE MODERN CUPS FR 705-3	\$200.00
2026	385	10/30/2025	AP TESTING	\$150.00
2026	386	10/30/2025	JEFF MUSIC PROG DONATIONS/S THOMPSON/K KELLY/R FRY	\$105.00
2026	387	10/30/2025	HM FALL BOOK FAIR 120-2 FY26	\$108.73
2026	388	10/30/2025	HM FY26 CANDY BAR FR 120-3	\$780.00
2026	389	10/31/2025	SIMPLE MODERN CUPS FR 705-3	\$160.00
2026	390	10/31/2025	MS CHOIR DUES	\$261.00
2026	391	10/31/2025	AP TESTING	\$30.00
2026	392	10/31/2025	PUMPKIN PATCH FIELD TRIP	\$108.00
2026	393	10/31/2025	JEFF MUSIC PROG DONATIONS	\$475.00
2026	394	10/31/2025	POP CORN/PICKLES FR 120-1	\$159.75
2026	394	10/31/2025	POP CORN/PICKLES FR 120-1	\$53.25
2026	395	10/31/2025	HM FY26 CANDY BAR FR 120-3	\$840.00
2026	396	10/31/2025	FIRST UNITED - INTEREST - OCTOBER	\$1,894.01
60 60 SCHOOL ACTIVITY FNDS Total				\$76,648.97
81 81 GIFT FUND				
2026	151	10/1/2025	JENIFER STEVENSON REALTY - SHS FOOTBALL SCOREBOARD	\$1,000.00
2026	180	10/20/2025	ARVEST CREDIT CARD	\$376.53
2026	180	10/20/2025	ARVEST CREDIT CARD	\$131.55
2026	186	10/23/2025	WOLVES BASEBALL BOOSTERS - CENTER FIELD SIGN	\$1,000.00
2026	195	10/28/2025	SHAWNEE EDUCATIONAL FOUNDATION - GRANTS	\$1,237.37
2026	195	10/28/2025	SHAWNEE EDUCATIONAL FOUNDATION - GRANTS	\$1,174.59
2026	195	10/28/2025	SHAWNEE EDUCATIONAL FOUNDATION - GRANTS	\$1,238.52
2026	195	10/28/2025	SHAWNEE EDUCATIONAL FOUNDATION - GRANTS	\$1,940.99
2026	195	10/28/2025	SHAWNEE EDUCATIONAL FOUNDATION - GRANTS	\$747.35
2026	195	10/28/2025	SHAWNEE EDUCATIONAL FOUNDATION - GRANTS	\$968.71
2026	195	10/28/2025	SHAWNEE EDUCATIONAL FOUNDATION - GRANTS	\$1,157.15
2026	195	10/28/2025	SHAWNEE EDUCATIONAL FOUNDATION - GRANTS	\$862.47
2026	195	10/28/2025	SHAWNEE EDUCATIONAL FOUNDATION - GRANTS	\$1,099.69
2026	195	10/28/2025	SHAWNEE EDUCATIONAL FOUNDATION - GRANTS	\$1,246.76
2026	195	10/28/2025	SHAWNEE EDUCATIONAL FOUNDATION - GRANTS	\$1,002.91
2026	195	10/28/2025	SHAWNEE EDUCATIONAL FOUNDATION - GRANTS	\$1,223.04
2026	195	10/28/2025	SHAWNEE EDUCATIONAL FOUNDATION - GRANTS	\$780.00
2026	195	10/28/2025	SHAWNEE EDUCATIONAL FOUNDATION - GRANTS	\$1,050.00
2026	195	10/28/2025	SHAWNEE EDUCATIONAL FOUNDATION - GRANTS	\$1,320.00
2026	195	10/28/2025	SHAWNEE EDUCATIONAL FOUNDATION - GRANTS	\$580.00
2026	195	10/28/2025	SHAWNEE EDUCATIONAL FOUNDATION - GRANTS	\$757.50
2026	195	10/28/2025	SHAWNEE EDUCATIONAL FOUNDATION - GRANTS	\$464.98
2026	195	10/28/2025	SHAWNEE EDUCATIONAL FOUNDATION - GRANTS	\$764.38
2026	195	10/28/2025	SHAWNEE EDUCATIONAL FOUNDATION - GRANTS	\$1,163.99
2026	195	10/28/2025	SHAWNEE EDUCATIONAL FOUNDATION - GRANTS	\$1,961.65
2026	195	10/28/2025	SHAWNEE EDUCATIONAL FOUNDATION - GRANTS	\$1,001.24

Receipt Analysis

Options: Date Range: 10/1/2025 - 10/31/2025

Year	Receipt No	Date	Received From	Amount
2026	195	10/28/2025	SHAWNEE EDUCATIONAL FOUNDATION - GRANTS	\$692.96
2026	195	10/28/2025	SHAWNEE EDUCATIONAL FOUNDATION - GRANTS	\$1,134.04
2026	195	10/28/2025	SHAWNEE EDUCATIONAL FOUNDATION - GRANTS	\$1,196.94
2026	195	10/28/2025	SHAWNEE EDUCATIONAL FOUNDATION - GRANTS	\$1,250.00
2026	195	10/28/2025	SHAWNEE EDUCATIONAL FOUNDATION - GRANTS	\$1,135.94
2026	195	10/28/2025	SHAWNEE EDUCATIONAL FOUNDATION - GRANTS	\$1,948.01
			81 81 GIFT FUND Total	\$33,609.26
			Receipts Total	\$2,438,444.26

Shawnee Public Schools - Statement of Financial Activity

	General	CooP Funds	Building	Bond Funds	Sinking Funds	Gift Funds	Insurance Funds	Total
Beginning Balance 11/01/2025	\$ 2,574,859.02	\$ (2,591.32)	\$ 1,564,719.90	\$ 1,536,681.27	\$ 935,452.57	\$ 995,250.97	\$ 1,254,156.07	\$ 8,858,528.48
								\$ -
Receipts - Local Revenue	\$ 31,049.26	\$ -	\$ 55,324.25	\$ -	\$ 6,531.70	\$ 1,463.68	\$ 238.25	\$ 94,607.14
Receipts - Intermediate Revenue	\$ 9,482.20	\$ -	\$ -	\$ -	\$ -	\$ -	\$ -	\$ 9,482.20
Receipts - State Revenue	\$ 2,167,346.72	\$ -	\$ 27.13	\$ -	\$ 128.64	\$ -	\$ -	\$ 2,167,502.49
Receipts - Federal Revenue	\$ 527,497.38	\$ -	\$ -	\$ -	\$ -	\$ -	\$ -	\$ 527,497.38
Receipts - Misc Revenue/Adjusting Entries	\$ 4,611.16	\$ -	\$ -	\$ -	\$ -	\$ -	\$ 75,122.99	\$ 79,734.15
Total Receipts	\$ 2,739,986.72	\$ -	\$ 55,351.38	\$ -	\$ 6,660.34	\$ 1,463.68	\$ 75,361.24	\$ 11,737,351.84
Disbursements - FY 25 Checks Paid	\$ -	\$ -	\$ -		\$ -	\$ -	\$ -	\$ -
Disbursements - FY 26 Checks Paid	\$ 2,484,410.70	\$ -	\$ 197,396.38	\$ 10,248.89	\$ 109,706.25	\$ 95,092.47	\$ 346,977.56	\$ 3,243,832.25
Total Disbursements	\$ 2,484,410.70	\$ -	\$ 197,396.38	\$ 10,248.89	\$ 109,706.25	\$ 95,092.47	\$ 346,977.56	\$ 3,243,832.25
Adjusting Entries - Deposit In Transit	\$ -							
Adjusting Entries - Interest								
Ending Cash Balance 11/30/2025	\$ 2,830,435.04	\$ (2,591.32)	\$ 1,422,674.90	\$ 1,526,432.38	\$ 832,406.66	\$ 901,622.18	\$ 982,539.75	\$ 8,493,519.59
Outstanding Checks - FY 25	\$ -	\$ -	\$ -	\$ -	\$ -	\$ -	\$ -	\$ -
Outstanding Checks - FY 26	\$ 2,484,410.70	\$ -	\$ 197,396.38	\$ 10,248.89	\$ 109,706.25	\$ 95,092.47	\$ 346,977.56	\$ 3,243,832.25
Book End Balance (UNAUDITED)	\$ 346,024.34	\$ (2,591.32)	\$ 1,225,278.52	\$ 1,516,183.49	\$ 722,700.41	\$ 806,529.71	\$ 635,562.19	\$ 5,249,687.34
FY 26 Appropriations	\$ 40,647,236.62	\$ -	\$ 5,204,826.73					
FY 26 Encumbrances	\$ 36,956,730.61		\$ 4,167,582.87					
Estimated FY 26 Fund Balance	<u>\$ 3,690,506.01</u>		<u>\$ 1,037,243.86</u>					

Shawnee Public Schools

Payment Clearing Register

Options: Fund: Governmental Funds, Show Detail: Yes, Date Range: 11/1/2025 - 11/30/2025, Account: All, Status: All

Clearing No	Date		Account No	Account Type	Amount	Status
	Year	Fund	Payment No	Amount		
87	11/3/2025		101	AC	\$16,940.08	Posted
	2026	11	2190	\$9,796.63		
	2026	11	2171	\$61.67		
	2026	11	2165	\$3,287.76		
	2026	11	2144	\$187.00		
	2026	11	2204	\$2,812.60		
	2026	11	2195	\$492.10		
	2026	11	2184	\$302.32		
		2026	11 Total	\$16,940.08		
88	11/4/2025		101	AC	\$34,926.27	Posted
	2026	11	2199	\$245.84		
	2026	11	2197	\$4,372.47		
	2026	11	2196	\$2,235.00		
	2026	11	2191	\$881.46		
	2026	11	2186	\$3,617.40		
	2026	11	2181	\$15.00		
	2026	11	2161	\$1,000.00		
	2026	11	147	\$230.87		
		2026	11 Total	\$12,598.04		
	2026	21	255	\$280.00		
	2026	21	252	\$2,522.00		
	2026	21	241	\$18,890.75		
		2026	21 Total	\$21,692.75		
	2026	81	11	\$635.48		
		2026	81 Total	\$635.48		
89	11/5/2025		101	AC	\$179,921.48	Posted
	2026	11	2193	\$34,638.64		
	2026	11	2189	\$710.81		
	2026	11	2185	\$17,641.45		
	2026	11	1683	\$3,603.19		
	2026	11	825	\$58.25		
		2026	11 Total	\$56,652.34		
	2026	21	256	\$7,915.00		
	2026	21	233	\$950.00		
		2026	21 Total	\$8,865.00		
	2026	33	15	\$4,697.89		
		2026	33 Total	\$4,697.89		
	2026	41	1	\$109,706.25		
		2026	41 Total	\$109,706.25		
90	11/6/2025		101	AC	\$51,166.17	Posted
	2026	11	2203	\$531.40		
	2026	11	2202	\$14.68		
	2026	11	2198	\$490.00		
	2026	11	2137	\$33.36		
	2026	11	1429	\$29.19		
	2026	11	854	\$1,800.00		
	2026	11	2162	\$131.60		

Shawnee Public Schools

Payment Clearing Register

Options: Fund: Governmental Funds, Show Detail: Yes, Date Range: 11/1/2025 - 11/30/2025, Account: All, Status: All

Clearing No	Date		Account No	Account Type	Amount	Status	
	Year	Fund	Payment No	Amount			
91	2026	11	2228		\$250.00		
			2026 11 Total		\$3,280.23		
	2026	21	270		\$47,885.94		
			2026 21 Total		\$47,885.94		
		11/7/2025	101	AC		\$127,512.50	Posted
	2026	11	2209		\$1,112.65		
	2026	11	2201		\$1,647.00		
	2026	11	2249		\$88,721.51		
	2026	11	2212		\$20,198.29		
	2026	11	2222		\$8,874.62		
	2026	11	2236		\$722.78		
	2026	11	2232		\$2,336.83		
			2026 11 Total		\$123,613.68		
	2026	21	257		\$3,000.00		
	2026	21	263		\$463.96		
		2026 21 Total		\$3,463.96			
2026	81	12		\$344.86			
2026	81	13		\$90.00			
		2026 81 Total		\$434.86			
92		11/10/2025	101	AC		\$10,772.66	Posted
	2026	11	2225		\$470.10		
	2026	11	2220		\$31.34		
	2026	11	2200		\$765.00		
	2026	11	2174		\$106.00		
	2026	11	259		\$230.87		
	2026	11	2214		\$316.25		
	2026	11	2208		\$619.69		
			2026 11 Total		\$2,539.25		
	2026	21	271		\$883.69		
	2026	21	269		\$646.00		
	2026	21	265		\$2,991.22		
	2026	21	254		\$466.50		
			2026 21 Total		\$4,987.41		
	2026	33	16		\$3,246.00		
		2026 33 Total		\$3,246.00			
93		11/12/2025	101	AC		\$58,854.19	Posted
	2026	11	2238		\$4,875.00		
	2026	11	2235		\$511.92		
	2026	11	2231		\$13,537.50		
	2026	11	2226		\$112.64		
	2026	11	2223		\$6,884.25		
	2026	11	2221		\$192.00		
	2026	11	2218		\$17,719.52		
	2026	11	2216		\$62.50		
	2026	11	2213		\$4,000.00		
	2026	11	2187		\$41.00		
	2026	11	2169		\$144.00		

Shawnee Public Schools

Payment Clearing Register

Options: Fund: Governmental Funds, Show Detail: Yes, Date Range: 11/1/2025 - 11/30/2025, Account: All, Status: All

Clearing No	Date		Account No	Account Type	Amount	Status
	Year	Fund	Payment No	Amount		
	2026	11	224		\$230.87	
	2026	11	182		\$230.87	
	2026	11	2229		\$2,000.00	
	2026	11	2243		\$860.51	
	2026	11	2244		\$660.56	
	2026	11	2246		\$199.95	
			2026 11 Total		\$52,263.09	
	2026	21	272		\$75.20	
	2026	21	267		\$1,000.00	
	2026	21	262		\$698.51	
	2026	21	261		\$539.96	
	2026	21	258		\$3,360.00	
	2026	21	266		\$917.43	
			2026 21 Total		\$6,591.10	
94		11/13/2025	101	AC		\$20,620.25
	2026	11	2242		\$50.00	
	2026	11	2217		\$470.00	
	2026	11	2215		\$391.23	
	2026	11	2211		\$4,253.50	
	2026	11	2240		\$1,154.96	
	2026	11	2275		\$150.00	
			2026 11 Total		\$6,469.69	
	2026	21	264		\$9,374.56	
	2026	21	260		\$4,369.00	
	2026	21	273		\$407.00	
			2026 21 Total		\$14,150.56	
95		11/14/2025	101	AC		\$22,260.77
	2026	11	2266		\$213.16	
	2026	11	2239		\$500.00	
	2026	11	2227		\$669.00	
	2026	11	2210		\$165.00	
	2026	11	2183		\$1,748.00	
	2026	11	2251		\$3,100.93	
	2026	11	2252		\$5,104.41	
	2026	11	2271		\$1,061.58	
	2026	11	2263		\$558.93	
	2026	11	2269		\$567.94	
	2026	11	2207		\$113.00	
	2026	11	2253		\$68.24	
			2026 11 Total		\$13,870.19	
	2026	21	268		\$5,812.12	
	2026	21	275		\$623.40	
	2026	21	281		\$1,680.03	
	2026	21	279		\$139.75	
	2026	21	284		\$72.96	
	2026	21	283		\$62.32	
			2026 21 Total		\$8,390.58	

Shawnee Public Schools

Payment Clearing Register

Options: Fund: Governmental Funds, Show Detail: Yes, Date Range: 11/1/2025 - 11/30/2025, Account: All, Status: All

Clearing No	Date		Account No	Account Type	Amount	Status
	Year	Fund	Payment No	Amount		
96	11/17/2025		101	AC	\$20,117.18	Posted
	2026	11	2264	\$608.94		
	2026	11	2259	\$7,770.36		
	2026	11	2241	\$60.00		
	2026	11	2219	\$7,927.34		
	2026	11	2273	\$1,902.00		
	2026	11	1541	\$400.00		
			2026 11 Total	\$18,668.64		
	2026	21	282	\$1,448.54		
			2026 21 Total	\$1,448.54		
97	11/18/2025		101	AC	\$16,908.60	Posted
	2026	11	2278	\$309.95		
	2026	11	2277	\$7,287.14		
	2026	11	2276	\$1,089.92		
	2026	11	2272	\$240.00		
	2026	11	2268	\$105.68		
	2026	11	2265	\$364.56		
	2026	11	2261	\$1,265.44		
	2026	11	2258	\$155.39		
	2026	11	2257	\$55.00		
	2026	11	2256	\$2,817.40		
	2026	11	2255	\$196.38		
	2026	11	296	\$230.87		
	2026	11	2233	\$235.93		
	2026	11	2260	\$49.29		
			2026 11 Total	\$14,402.95		
	2026	21	280	\$1,432.05		
	2026	21	259	\$1,073.60		
			2026 21 Total	\$2,505.65		
98	11/19/2025		101	AC	\$6,371.00	Posted
	2026	21	276	\$6,371.00		
			2026 21 Total	\$6,371.00		
99	11/20/2025		101	AC	\$2,043,696.36	Posted
	2026	11	2274	\$105.00		
	2026	11	2250	\$376.50		
	2026	11	2192	\$1,020.72		
	2026	11	1556	\$6,112.50		
	2026	11	2254	\$150.00		
	2026	11	2859	\$1,542,988.05		
	2026	11	2852	\$135,881.23		
	2026	11	2853	\$299,218.20		
	2026	11	2873	\$8,448.00		
	2026	11	2872	\$210.00		
			2026 11 Total	\$1,994,510.20		
	2026	21	277	\$444.78		
	2026	21	309	\$37,730.39		
	2026	21	304	\$7,531.56		

Shawnee Public Schools

Payment Clearing Register

Options: Fund: Governmental Funds, Show Detail: Yes, Date Range: 11/1/2025 - 11/30/2025, Account: All, Status: All

Clearing No	Date		Account No	Account Type	Amount	Status
	Year	Fund	Payment No	Amount		
	2026	21	303		\$3,479.43	
			2026 21 Total		\$49,186.16	
100		11/21/2025	101	AC		\$58,999.86 Posted
	2026	11	2878		\$509.69	
	2026	11	2904		\$51,628.46	
	2026	11	2881		\$2,124.32	
	2026	11	2898		\$776.43	
	2026	11	2885		\$480.39	
	2026	11	2890		\$110.60	
			2026 11 Total		\$55,629.89	
	2026	21	285		\$483.90	
	2026	21	286		\$2,800.00	
	2026	21	316		\$86.07	
			2026 21 Total		\$3,369.97	
101		11/24/2025	101	AC		\$544,482.79 Posted
	2026	11	2887		\$9,357.28	
	2026	11	2884		\$405.00	
	2026	11	2864		\$255.00	
	2026	11	2374		\$261.00	
	2026	11	2267		\$750.00	
	2026	11	2865		\$61,547.00	
	2026	11	2906		\$8,834.97	
	2026	11	2883		\$1,446.34	
			2026 11 Total		\$82,856.59	
	2026	21	317		\$942.88	
	2026	21	310		\$30.00	
	2026	21	302		\$590.00	
	2026	21	311		\$1,466.00	
	2026	21	319		\$50.75	
	2026	21	320		\$10.00	
	2026	21	321		\$15,231.88	
			2026 21 Total		\$18,321.51	
	2026	33	17		\$2,305.00	
			2026 33 Total		\$2,305.00	
	2026	81	14		\$94,022.13	
			2026 81 Total		\$94,022.13	
	2026	86	5		\$346,977.56	
			2026 86 Total		\$346,977.56	
102		11/25/2025	101	AC		\$10,365.16 Posted
	2026	11	2903		\$3,108.92	
	2026	11	2895		\$30.00	
	2026	11	2892		\$80.40	
	2026	11	2860		\$115.60	
	2026	11	2270		\$67.60	
	2026	11	314		\$230.87	
	2026	11	2851		\$188.90	
	2026	11	2283		\$696.03	

Shawnee Public Schools

Payment Clearing Register

Options: Fund: Governmental Funds, Show Detail: Yes, Date Range: 11/1/2025 - 11/30/2025, Account: All, Status: All

Clearing No	Date		Account No	Account Type	Amount	Status
	Year	Fund	Payment No	Amount		
	2026	11	2143		\$5,700.59	
			2026 11 Total		\$10,218.91	
	2026	21	232		\$146.25	
			2026 21 Total		\$146.25	
103		11/26/2025	101	AC	\$14,940.14	Posted
	2026	11	2902		\$76.75	
	2026	11	2897		\$7,816.46	
	2026	11	2891		\$226.42	
	2026	11	2879		\$45.00	
	2026	11	2877		\$2,055.00	
	2026	11	2871		\$50.00	
	2026	11	2870		\$650.00	
	2026	11	2862		\$302.02	
	2026	11	2861		\$50.00	
	2026	11	2854		\$469.23	
	2026	11	2843		\$252.90	
	2026	11	2279		\$827.50	
	2026	11	2262		\$1,229.86	
	2026	11	2889		\$49.00	
	2026	11	2866		\$450.00	
	2026	11	2849		\$100.00	
	2026	11	2905		\$270.00	
			2026 11 Total		\$14,920.14	
	2026	21	278		\$20.00	
			2026 21 Total		\$20.00	
104		11/28/2025	101	AC	\$4,976.79	Posted
	2026	11	2882		\$1,373.60	
	2026	11	2402		\$3,603.19	
			2026 11 Total		\$4,976.79	
Year and Fund Totals:						
	2026	11			\$2,484,410.70	
	2026	21			\$197,396.38	
	2026	33			\$10,248.89	
	2026	41			\$109,706.25	
	2026	81			\$95,092.47	
	2026	86			\$346,977.56	
Total Payment Clearing Posted =					\$3,243,832.25	
Total Payment Clearing Not Posted =					\$0.00	

Receipt Analysis

Options: Date Range: 11/1/2025 - 11/30/2025

Year	Receipt No	Date	Received From	Amount
11 GEN FUND-FOR OP				
2026	203	11/3/2025	CN - D SEEBECK	\$1.00
2026	203	11/3/2025	CN - D SEEBECK	\$15.45
2026	203	11/3/2025	CN - D SEEBECK	\$51.00
2026	205	11/3/2025	JOSHUA CHISM - SPS PUP PACK - DAYCARE	\$654.00
2026	207	11/3/2025	POTT CO	\$1,277.23
2026	207	11/3/2025	POTT CO	\$9,306.86
2026	207	11/3/2025	POTT CO	\$255.69
2026	207	11/3/2025	POTT CO	\$8,204.97
2026	207	11/3/2025	POTT CO	\$49.33
2026	207	11/3/2025	POTT CO	\$190.05
2026	208	11/4/2025	CN - D SEEBECK	\$4.75
2026	208	11/4/2025	CN - D SEEBECK	\$25.75
2026	208	11/4/2025	CN - D SEEBECK	\$34.50
2026	208	11/4/2025	CN - D SEEBECK	\$3.00
2026	208	11/4/2025	CN - D SEEBECK	\$29.00
2026	208	11/4/2025	CN - D SEEBECK	\$13.25
2026	208	11/4/2025	CN - D SEEBECK	\$2.75
2026	208	11/4/2025	CN - D SEEBECK	\$38.10
2026	208	11/4/2025	CN - D SEEBECK	\$15.15
2026	209	11/5/2025	CN - D SEEBECK	\$2.00
2026	209	11/5/2025	CN - D SEEBECK	\$35.30
2026	209	11/5/2025	CN - D SEEBECK	\$56.75
2026	209	11/5/2025	CN - D SEEBECK	\$4.50
2026	209	11/5/2025	CN - D SEEBECK	\$23.25
2026	209	11/5/2025	CN - D SEEBECK	\$5.15
2026	209	11/5/2025	CN - D SEEBECK	\$6.00
2026	209	11/5/2025	CN - D SEEBECK	\$29.15
2026	209	11/5/2025	CN - D SEEBECK	\$2.00
2026	210	11/5/2025	SHANNON RODEN - PURCHASE COMPUTER	\$142.86
2026	211	11/5/2025	THE STATE TREASURER - INS PREM REFUND- (LC)	\$828.88
2026	212	11/6/2025	CN - D SEEBECK	\$0.75
2026	212	11/6/2025	CN - D SEEBECK	\$10.00
2026	212	11/6/2025	CN - D SEEBECK	\$4.00
2026	212	11/6/2025	CN - D SEEBECK	\$5.15
2026	212	11/6/2025	CN - D SEEBECK	\$30.50
2026	212	11/6/2025	CN - D SEEBECK	\$3.00
2026	212	11/6/2025	CN - D SEEBECK	\$16.45
2026	212	11/6/2025	CN - D SEEBECK	\$54.35
2026	213	11/7/2025	CN - D SEEBECK	\$5.15
2026	213	11/7/2025	CN - D SEEBECK	\$2.00
2026	213	11/7/2025	CN - D SEEBECK	\$34.75
2026	213	11/7/2025	CN - D SEEBECK	\$2.25
2026	213	11/7/2025	CN - D SEEBECK	\$5.15
2026	213	11/7/2025	CN - D SEEBECK	\$38.25
2026	214	11/7/2025	SPS - CATERING - OROS/SEQU	\$90.00
2026	214	11/7/2025	SPS - CATERING - OROS/SEQU	\$108.00
2026	215	11/7/2025	OSDE - NAT'L SCH LUNCH - FED - 763	\$112,206.33
2026	216	11/7/2025	OSDE - NAT'L SCH LUNCH - FED - 763	\$217,149.84
2026	217	11/7/2025	OSDE - SCH BREAKFAST PROG - 764	\$40,639.62
2026	218	11/7/2025	OSDE - SCH BREAKFAST PROG - 764	\$81,549.72
2026	219	11/10/2025	MSB - HS	\$70.00
2026	219	11/10/2025	MSB - HS	\$50.00
2026	220	11/10/2025	CN - D SEEBECK	\$4.00
2026	220	11/10/2025	CN - D SEEBECK	\$20.00
2026	220	11/10/2025	CN - D SEEBECK	\$5.00
2026	220	11/10/2025	CN - D SEEBECK	\$5.15
2026	220	11/10/2025	CN - D SEEBECK	\$56.25

Receipt Analysis

Options: Date Range: 11/1/2025 - 11/30/2025

Year	Receipt No	Date	Received From	Amount
2026	220	11/10/2025	CN - D SEEBECK	\$20.00
2026	220	11/10/2025	CN - D SEEBECK	\$1.00
2026	220	11/10/2025	CN - D SEEBECK	\$20.60
2026	220	11/10/2025	CN - D SEEBECK	\$44.75
2026	221	11/11/2025	CN - D SEEBECK	\$2.00
2026	221	11/11/2025	CN - D SEEBECK	\$5.15
2026	221	11/11/2025	CN - D SEEBECK	\$49.75
2026	221	11/11/2025	CN - D SEEBECK	\$1.50
2026	221	11/11/2025	CN - D SEEBECK	\$2.95
2026	221	11/11/2025	CN - D SEEBECK	\$33.20
2026	221	11/11/2025	CN - D SEEBECK	\$5.15
2026	221	11/11/2025	CN - D SEEBECK	\$5.15
2026	222	11/12/2025	OTC	\$7,493.85
2026	222	11/12/2025	OTC	\$170.82
2026	222	11/12/2025	OTC	\$119,361.97
2026	223	11/12/2025	CN - D SEEBECK	\$5.15
2026	223	11/12/2025	CN - D SEEBECK	\$2.00
2026	223	11/12/2025	CN - D SEEBECK	\$5.90
2026	223	11/12/2025	CN - D SEEBECK	\$58.50
2026	224	11/13/2025	OSDE - FOUNDATION & SALARY INCENTIVE AID	\$1,574,060.46
2026	225	11/13/2025	OSDE - CERT HEALTH ALLOW - 334	\$195,471.36
2026	226	11/13/2025	OSDE - SUPPORT HEALTH ALLOW - 335	\$97,735.68
2026	227	11/13/2025	OSDE - CERT HEALTH ALLOW IN LIEU OF FBA - 331	\$4,140.78
2026	228	11/13/2025	OSDE - SUPPORT HEALTH ALLOW IN LIEU OF FBA - 332	\$19,871.93
2026	229	11/13/2025	OSDE - TEXTBOOKS - 333	\$18,378.14
2026	230	11/13/2025	OSDE - READING SUFFICIENCE (367)	\$85,969.73
2026	231	11/13/2025	CN - D SEEBECK	\$2.00
2026	231	11/13/2025	CN - D SEEBECK	\$5.15
2026	231	11/13/2025	CN - D SEEBECK	\$19.00
2026	231	11/13/2025	CN - D SEEBECK	\$2.00
2026	231	11/13/2025	CN - D SEEBECK	\$5.15
2026	231	11/13/2025	CN - D SEEBECK	\$29.25
2026	231	11/13/2025	CN - D SEEBECK	\$20.00
2026	231	11/13/2025	CN - D SEEBECK	\$2.45
2026	231	11/13/2025	CN - D SEEBECK	\$15.45
2026	231	11/13/2025	CN - D SEEBECK	\$58.25
2026	231	11/13/2025	CN - D SEEBECK	\$5.15
2026	231	11/13/2025	CN - D SEEBECK	\$5.15
2026	232	11/14/2025	CN - D SEEBECK	\$7.15
2026	232	11/14/2025	CN - D SEEBECK	\$20.00
2026	232	11/14/2025	CN - D SEEBECK	\$2.00
2026	232	11/14/2025	CN - D SEEBECK	\$5.15
2026	232	11/14/2025	CN - D SEEBECK	\$73.00
2026	232	11/14/2025	CN - D SEEBECK	\$1.00
2026	232	11/14/2025	CN - D SEEBECK	\$20.00
2026	232	11/14/2025	CN - D SEEBECK	\$10.15
2026	232	11/14/2025	CN - D SEEBECK	\$2.25
2026	233	11/17/2025	MSB - HS, SECC, HM	\$55.00
2026	233	11/17/2025	MSB - HS, SECC, HM	\$50.00
2026	233	11/17/2025	MSB - HS, SECC, HM	\$10.00
2026	233	11/17/2025	MSB - HS, SECC, HM	\$35.00
2026	234	11/17/2025	OSDE - PROJECT RESPECT LEA - 780	\$13,588.28
2026	235	11/17/2025	OSDE - TITLE I SCHOOL IMPROVEMENT - 515	\$4,896.76
2026	236	11/17/2025	CN - D SEEBECK	\$5.00
2026	236	11/17/2025	CN - D SEEBECK	\$29.50
2026	238	11/17/2025	STATE OF OK - DEPT OF REHABILITATION SERVICES	\$304.50
2026	238	11/17/2025	STATE OF OK - DEPT OF REHABILITATION SERVICES	\$166.75
2026	239	11/17/2025	SPS - PUP PACK MEALS	\$1,902.00

Shawnee Public Schools

Receipt Analysis

Options: Date Range: 11/1/2025 - 11/30/2025

Year	Receipt No	Date	Received From	Amount
2026	240	11/18/2025	TEACHER'S RETIREMENT - REFUND	\$3,782.28
2026	241	11/18/2025	CN - D SEEBECK	\$3.00
2026	241	11/18/2025	CN - D SEEBECK	\$30.00
2026	241	11/18/2025	CN - D SEEBECK	\$13.25
2026	241	11/18/2025	CN - D SEEBECK	\$28.75
2026	241	11/18/2025	CN - D SEEBECK	\$37.00
2026	241	11/18/2025	CN - D SEEBECK	\$2.75
2026	241	11/18/2025	CN - D SEEBECK	\$72.40
2026	241	11/18/2025	CN - D SEEBECK	\$55.25
2026	242	11/18/2025	SHAWNEE BAND BOOSTERS ASSOC - BAND TECHS	\$1,527.00
2026	243	11/18/2025	JAMES & ALEXANDRA WATKINS - SPS PUP PACK - DAYCARE	\$654.00
2026	246	11/19/2025	CN - D SEEBECK	\$10.00
2026	246	11/19/2025	CN - D SEEBECK	\$5.15
2026	246	11/19/2025	CN - D SEEBECK	\$28.00
2026	246	11/19/2025	CN - D SEEBECK	\$5.15
2026	246	11/19/2025	CN - D SEEBECK	\$66.50
2026	246	11/19/2025	CN - D SEEBECK	\$5.15
2026	246	11/19/2025	CN - D SEEBECK	\$11.50
2026	248	11/20/2025	COL - SCHOOL LAND EARNINGS	\$44,452.62
2026	249	11/20/2025	DOEP TREAS - TITLE VII - IMPACT AID - 591	\$36,882.00
2026	251	11/20/2025	SPS PUP PACK - DAYCARE - VARIOUS EMPLOYEES	\$8,448.00
2026	252	11/20/2025	CN - D SEEBECK	\$1,228.90
2026	252	11/20/2025	CN - D SEEBECK	\$1.00
2026	252	11/20/2025	CN - D SEEBECK	\$165.15
2026	252	11/20/2025	CN - D SEEBECK	\$53.50
2026	252	11/20/2025	CN - D SEEBECK	\$3.00
2026	252	11/20/2025	CN - D SEEBECK	\$29.25
2026	252	11/20/2025	CN - D SEEBECK	\$2.00
2026	252	11/20/2025	CN - D SEEBECK	\$2.00
2026	253	11/21/2025	OSDE - FRESH FRUIT/VEG - OCT	\$779.13
2026	253	11/21/2025	OSDE - FRESH FRUIT/VEG - OCT	\$617.59
2026	253	11/21/2025	OSDE - FRESH FRUIT/VEG - OCT	\$753.50
2026	253	11/21/2025	OSDE - FRESH FRUIT/VEG - OCT	\$685.78
2026	253	11/21/2025	OSDE - FRESH FRUIT/VEG - OCT	\$868.13
2026	254	11/21/2025	JOSHUA CHISM - SPS PUP PACK - DAYCARE	\$654.00
2026	255	11/21/2025	CN - D SEEBECK	\$1,171.00
2026	255	11/21/2025	CN - D SEEBECK	\$635.65
2026	255	11/21/2025	CN - D SEEBECK	\$5.00
2026	255	11/21/2025	CN - D SEEBECK	\$31.10
2026	255	11/21/2025	CN - D SEEBECK	\$10.00
2026	255	11/21/2025	CN - D SEEBECK	\$45.30
2026	255	11/21/2025	CN - D SEEBECK	\$76.25
2026	256	11/21/2025	CN - D SEEBECK	\$2.25
2026	256	11/21/2025	CN - D SEEBECK	\$39.90
2026	256	11/21/2025	CN - D SEEBECK	\$32.00
2026	256	11/21/2025	CN - D SEEBECK	\$0.60
2026	256	11/21/2025	CN - D SEEBECK	\$6.00
2026	256	11/21/2025	CN - D SEEBECK	\$973.50
2026	256	11/21/2025	CN - D SEEBECK	\$751.50
2026	257	11/24/2025	OSDE - IDEA-B MONITORING ASST - 615	\$2,546.20
2026	258	11/26/2025	OK HEALTH CARE AUTH - MEDICAID	\$13,863.25
2026	259	11/30/2025	MSB - HS, HN, JEFF, SECC, WR	\$25.50
2026	259	11/30/2025	MSB - HS, HN, JEFF, SECC, WR	\$15.00
2026	259	11/30/2025	MSB - HS, HN, JEFF, SECC, WR	\$10.00
2026	259	11/30/2025	MSB - HS, HN, JEFF, SECC, WR	\$5.00
2026	259	11/30/2025	MSB - HS, HN, JEFF, SECC, WR	\$35.75

11 GEN FUND-FOR OP Total

\$2,739,986.72

Receipt Analysis

Options: Date Range: 11/1/2025 - 11/30/2025

Year	Receipt No	Date	Received From	Amount
2026	207	11/3/2025	POTT CO	\$1,328.43
2026	207	11/3/2025	POTT CO	\$27.13
2026	237	11/17/2025	CITY OF SHAWNEE - SDRPP - TIF -TAXES	\$22,805.15
2026	260	11/30/2025	FIRST UNITED - INTEREST - NOVEMBER	\$31,190.67
21 BUILDING Total				\$55,351.38
41 41 SINKING				
2026	207	11/3/2025	POTT CO	\$6,531.70
2026	207	11/3/2025	POTT CO	\$128.64
41 41 SINKING Total				\$6,660.34
60 60 SCHOOL ACTIVITY FNDS				
2026	397	11/3/2025	STRIPE - FAM PASS/FOOTBALL	\$125.00
2026	397	11/3/2025	STRIPE - FAM PASS/FOOTBALL	\$355.00
2026	398	11/3/2025	ROBOTICS - LED LIGHTS FR#705-23	\$30.00
2026	399	11/3/2025	ROBOTICS - LED LIGHTS FR#705-23	\$30.00
2026	400	11/3/2025	LOST BUS TAGS - LA/UN/KC/MK/AH/GH/PP/AM	\$40.00
2026	401	11/3/2025	2nd GR FIELD TRIP	\$156.00
2026	402	11/3/2025	CTSWS - WR	\$105.00
2026	403	11/3/2025	HM FALL BOOK FAIR 120-2 FY26	\$114.83
2026	404	11/3/2025	HM FALL BOOK FAIR 120-2 FY26	\$91.67
2026	405	11/4/2025	FOOTBALL VS BISHOP KELLEY	\$2,635.00
2026	406	11/4/2025	AP TESTING	\$288.00
2026	407	11/4/2025	4TH GR SHIRTS	\$70.00
2026	408	11/4/2025	PUMPKIN PATCH FIELD TRIP	\$603.00
2026	409	11/5/2025	WOLVES BASEBALL BOOSTERS - UNIFORMS/HOODIES	\$7,949.20
2026	410	11/5/2025	OAMJHSC CONFERENCE	\$1,320.00
2026	411	11/5/2025	HM FALL BOOK FAIR 120-2 FY26	\$59.68
2026	412	11/5/2025	HM FY26 CANDY BAR FR 120-3	\$3,600.00
2026	413	11/6/2025	CROSS COUNTRTY ENTRY - MID-DEL	\$150.00
2026	414	11/6/2025	ROBOTICS - LED LIGHTS FR#705-23/DONATION	\$15.00
2026	414	11/6/2025	ROBOTICS - LED LIGHTS FR#705-23/DONATION	\$5.00
2026	415	11/6/2025	2026 HS YEARBOOKS/ADS/TRIBUTES FR 705-13	\$300.00
2026	416	11/6/2025	AP TESTING	\$99.00
2026	417	11/6/2025	SAC AND FOX NATION - DONATION/NA CLUB	\$500.00
2026	418	11/6/2025	OK ST FAIR - FFA	\$50.00
2026	419	11/6/2025	OAMJHSC CONFERENCE	\$30.00
2026	420	11/6/2025	BOO GRAMS FR 505-15	\$205.00
2026	421	11/7/2025	DA COLLECTION FOR RETURNED CHECK FY23(A HARVEY)	\$31.00
2026	422	11/7/2025	BOO GRAMS FR 705-20	\$80.00
2026	423	11/7/2025	SIMPLE MODERN CUPS FR 705-3	\$360.00
2026	424	11/7/2025	QDOBA GIVE BACK - HS LIBRARY FR 70521	\$122.14
2026	425	11/7/2025	3rd GR T-SHIRTS 130-4	\$40.00
2026	426	11/10/2025	STRIPE - FAMILY PASSES/FOOTBALL/B BASKETBALL	\$1,425.00
2026	426	11/10/2025	STRIPE - FAMILY PASSES/FOOTBALL/B BASKETBALL	\$90.00
2026	426	11/10/2025	STRIPE - FAMILY PASSES/FOOTBALL/B BASKETBALL	\$78.00
2026	427	11/10/2025	AP TESTING	\$578.00
2026	428	11/11/2025	BUNDT CAKE FR 505-13	\$3,169.00
2026	429	11/11/2025	B BASKETBALL VS EL RENO	\$1,142.00
2026	430	11/11/2025	AP TESTING	\$418.00
2026	431	11/11/2025	ADA BOTTLING CO - OCT COMMISSION	\$141.65
2026	432	11/11/2025	LOST BUS TAG - E GRASS	\$5.00
2026	433	11/11/2025	ADA BOTTLING CO - OCT COMMISSION	\$24.84
2026	434	11/11/2025	SECC FALL BOOK FAIR 150-1 FY26	\$320.20
2026	435	11/11/2025	SNACK SHACK FR 145-6 FY26	\$351.00
2026	436	11/11/2025	SEQU POPCORN/PICKLES FR 137-3 FY26	\$146.00
2026	437	11/12/2025	7/8/9 BOYS BASKETBALL VS CARL ALBERT	\$877.00
2026	438	11/12/2025	AP TESTING	\$1,129.00
2026	439	11/12/2025	REIMBURSEMENT FOR BROKEN/LOST TECHNOLOGY	\$208.00
2026	440	11/12/2025	OBU NURSING PROG - (FUNCTIONAL SKILLS CLASS)	\$710.00

Receipt Analysis

Options: Date Range: 11/1/2025 - 11/30/2025

Year	Receipt No	Date	Received From	Amount
2026	441	11/12/2025	6TH GR B/G BASKETBALL VS MLOUD	\$270.00
2026	441	11/12/2025	6TH GR B/G BASKETBALL VS MLOUD	\$270.00
2026	442	11/12/2025	KICKAPOO TRIBE OF OKLAHOMA-INDIAN STUDENTS	\$500.00
2026	443	11/13/2025	GIBSONS & REYNOLDS PC - B TENNIS DONATION FR705-32	\$250.00
2026	444	11/13/2025	AP TESTING	\$1,587.00
2026	445	11/13/2025	LOST BUS TAG - J OLIVER	\$5.00
2026	446	11/13/2025	CTSWS - WR	\$70.00
2026	447	11/13/2025	ORR FAMILY FARM FIELD TRIP-2ND GR	\$12.00
2026	448	11/13/2025	WR HONOR CHOIR T-SHIRTS 145-5	\$30.00
2026	449	11/13/2025	HM FALL BOOK FAIR 120-2 FY26	\$109.30
2026	450	11/13/2025	HM FALL BOOK FAIR 120-2 FY26	\$101.00
2026	451	11/13/2025	HM FALL BOOK FAIR 120-2 FY26	\$77.59
2026	452	11/13/2025	HM FALL BOOK FAIR 120-2 FY26-CASH RETURN	\$78.98
2026	452	11/13/2025	HM FALL BOOK FAIR 120-2 FY26-CASH RETURN	\$40.00
2026	453	11/14/2025	7/8/9 GR GIIRS VS EL RENO	\$374.00
2026	454	11/14/2025	LOST BUS TAG - A MORRISON	\$5.00
2026	455	11/14/2025	ROBOTICS - LED LIGHTS FR#705-23/DONATIONS	\$535.00
2026	455	11/14/2025	ROBOTICS - LED LIGHTS FR#705-23/DONATIONS	\$225.00
2026	456	11/14/2025	AP TESTING	\$30.00
2026	457	11/14/2025	LOST BUS TAGS	\$80.00
2026	458	11/14/2025	SECC FALL BOOK FAIR 150-1 FY26	\$293.13
2026	459	11/14/2025	SECC FALL BOOK FAIR 150-1 FY26	\$490.98
2026	460	11/14/2025	START-UP CASH RETURN	\$50.00
2026	461	11/14/2025	HM POPCORN & PICKLES FR# 120-1 FY26	\$126.00
2026	461	11/14/2025	HM POPCORN & PICKLES FR# 120-1 FY26	\$42.00
2026	462	11/17/2025	STRIPE - BASKETBALL-EL RENO - CARL ALBERT - MLOUD	\$19.00
2026	462	11/17/2025	STRIPE - BASKETBALL-EL RENO - CARL ALBERT - MLOUD	\$253.00
2026	462	11/17/2025	STRIPE - BASKETBALL-EL RENO - CARL ALBERT - MLOUD	\$15.00
2026	462	11/17/2025	STRIPE - BASKETBALL-EL RENO - CARL ALBERT - MLOUD	\$15.00
2026	462	11/17/2025	STRIPE - BASKETBALL-EL RENO - CARL ALBERT - MLOUD	\$12.00
2026	463	11/17/2025	ROBOTICS - LED LIGHTS FR#705-23	\$30.00
2026	464	11/17/2025	SIMPLE MODERN CUPS FR 705-3	\$160.00
2026	465	11/17/2025	SEQU POPCORN/PICKLES FR 137-3 FY26	\$139.00
2026	466	11/18/2025	7/8/9 GR BOYS BASKETBALL VS GUTHRIE	\$762.00
2026	467	11/18/2025	ANONYMOUS DONATION	\$100.00
2026	468	11/18/2025	8TH GR DANCE/CONCESSION/CASH RETURN 505-8	\$770.00
2026	468	11/18/2025	8TH GR DANCE/CONCESSION/CASH RETURN 505-8	\$500.00
2026	468	11/18/2025	8TH GR DANCE/CONCESSION/CASH RETURN 505-8	\$754.50
2026	469	11/18/2025	LOST BUS TAG - T HARDEMAN	\$5.00
2026	470	11/18/2025	SECC FALL BOOK FAIR 150-1 FY26	\$487.24
2026	471	11/18/2025	FALL FIELD TRIP BRADY, BULLOCK, BLAIR)	\$385.00
2026	472	11/18/2025	HM FY26 CANDY BAR FR 120-3	\$1,743.00
2026	473	11/18/2025	LOST BUS TAG - M DUGAN, W WALDRUP	\$10.00
2026	474	11/19/2025	ROBOTICS - LED LIGHTS FR#705-23	\$75.00
2026	475	11/19/2025	LOST BUS TAG	\$50.00
2026	476	11/19/2025	LOST BUS TAG - B HARGROVE	\$5.00
2026	477	11/19/2025	LOST BUS TAG - C WARREN	\$5.00
2026	478	11/19/2025	3rd GR T-SHIRTS	\$50.00
2026	479	11/20/2025	CO JEAN DAYS FR# 050-7	\$210.00
2026	480	11/20/2025	ROBOTICS - LED LIGHTS FR#705-23/DONATION	\$15.00
2026	480	11/20/2025	ROBOTICS - LED LIGHTS FR#705-23/DONATION	\$2,500.00
2026	481	11/21/2025	2026 HS YEARBOOKS/ADS/TRIBUTES FR 705-13	\$150.00
2026	482	11/21/2025	2026 HS YEARBOOKS/ADS/TRIBUTES FR 705-13	\$525.00
2026	483	11/24/2025	STRIPE - GIRLS BASK VS ELRENO/BOYS BASK VS GUTHRIE	\$31.00
2026	483	11/24/2025	STRIPE - GIRLS BASK VS ELRENO/BOYS BASK VS GUTHRIE	\$118.00
2026	484	11/30/2025	FIRST UNITED - INTEREST - NOVEMBER	\$1,902.35

60 60 SCHOOL ACTIVITY FNDS Total

\$47,820.28

Receipt Analysis

Options: Date Range: 11/1/2025 - 11/30/2025

Year	Receipt No	Date	Received From	Amount
2026	206	11/3/2025	OHIOPYLE PRINTS INC - COMMISSION	\$46.16
2026	244	11/18/2025	AMERICAN FIDELITY - FLEX	\$219.78
2026	245	11/19/2025	ARVEST CREDIT CARD	\$433.81
2026	245	11/19/2025	ARVEST CREDIT CARD	\$263.93
2026	247	11/19/2025	SIDNEY R CLARKE III REVOCALBE TRUST-BASEBALL TURF	\$500.00
81 81 GIFT FUND Total				\$1,463.68
86 86 INSURANCE RECOVERY FUND				
2026	204	11/3/2025	GALLAGHER BASSETT SERV INC - FINAL SUPPLEMENT	\$238.25
2026	250	11/20/2025	A & S ROOFING - REFUND FOR OVERPAYMENT	\$75,122.99
86 86 INSURANCE RECOVERY FUND Total				\$75,361.24
Receipts Total				\$2,926,643.64

Payment Register

Options: Year: 2025-2026, Fund Account: 2024 LR Bond, Date Range: 11/1/2025 - 11/30/2025, Print Payroll Payments: True, Print Details: False

Payment No	Date	Vendor No	Vendor	Type	Date Voided	Void Amount	Amount
21	11/11/2025	50770	EFFICIENT HEATING & COOLING				\$9,500.00
22	11/11/2025	10661	SCHOOL SPECIALTY LLC				\$10,082.27
23	11/21/2025	50852	WYNN CONSTRUCTION CO, INC				\$143,920.75
24	11/21/2025	51130	TULSA CHRISTIAN BROS PAINTIN				\$19,505.50
25	11/21/2025	50852	WYNN CONSTRUCTION CO, INC				\$231,447.15
26	11/21/2025	50852	WYNN CONSTRUCTION CO, INC				\$233,183.25
Non-Payroll Total:							\$629,638.92
Payroll Total:							\$0.00
Balance Forward:							\$1,790,512.27
Total:							\$2,494,521.19

Encumbrance Register

Options: Year: 2025-2026, Date Range: 7/1/2025 - 6/30/2026, PO Range: 670 - 49999, Fund(s): GEN FUND-FOR OP

Fund	PO No	Date	Vendor No	Vendor	Description	Amount
11	671	10/31/2025	50866	ENERGYCAP, LLC	ENERGY MANAGEMENT SOFTWARE	1,500.00
11	672	10/31/2025	1231	GREAT PLAINS GRAPHICS	MADONNA/FOOTBALL PINK OUT	255.00
11	673	10/31/2025	40758	ANDREA LYNN SHREVE	External Assessor for Sequoyah and Will Rogers	1,000.00
11	674	10/31/2025	39214	ARVEST BANK	Quality Kits for Self Assessment for 553/554	1,320.00
11	675	10/31/2025	3290	BSN SPORTS, LLC	EQUIPMENT/GEAR AD	400.00
11	676	10/31/2025	40802	HEATHER JAMES dba HJ AWARDS CO LLC	HUNTER BURNETT/HS VOLLEYBALL	300.00
11	677	11/03/2025	1177	PERMA BOUND BOOKS	PURCHASE LIBRARY BOOKS	661.25
11	678	11/04/2025	4788	AMAZON	3D PRINTING / HOLIDAY	500.00
11	679	11/04/2025	3290	BSN SPORTS, LLC	JEFF SHAFER/HS BASEBALL	900.00
11	680	11/04/2025	51085	CURTIS RESTAURANT SUPPLY	PASS-THRU REFRIGERATOR & DISPOSER	17,044.20
11	681	11/04/2025	4788	AMAZON	READING NIGHT	44.05
11	682	11/04/2025	39214	ARVEST BANK	Classroom supplies and materials	2,000.00
11	683	11/05/2025	3290	BSN SPORTS, LLC	JEFF SHAFER/HS BASEBALL	630.00
11	684	11/07/2025	10625	OKLA. STATE SCHOOL BOARDS ASSC	Workshop	100.00
11	685	11/10/2025	4788	AMAZON	HM 25-26 TITLE 1 FAMILY NIGHT PURCHASE ITEMS	220.62
11	686	11/10/2025	11026	SCHOLASTIC BOOKCLUBS INC	HM 25-26 Title 1 Family Night /Purchase items	450.00
11	687	11/10/2025	55	LAKESHORE LEARNING MATERIALS	Pup Pack	1,500.00
11	688	11/11/2025	39214	ARVEST BANK	STEM Supplies for Jefferson Nov/Dec Allocation	150.00
11	689	11/11/2025	4788	AMAZON	STEM Supplies for Jefferson Nov/Dec Allocation	100.00
11	690	11/11/2025	39214	ARVEST BANK	STEM Supplies for Horace Mann Nov/Dec Allocation	125.00
11	691	11/11/2025	4788	AMAZON	STEM Supplies for Horace Mann Nov/Dec Allocation	125.00
11	692	11/11/2025	4788	AMAZON	STEM Supplies for Sequoyah Nov/Dec Allocation	250.00
11	693	11/11/2025	4788	AMAZON	STEM Supplies for Will Rogers Nov/Dec Allocation	250.00
11	694	11/12/2025	3290	BSN SPORTS, LLC	WENDI WELLS/HS GIRLS BASKETBALL CREW NECKS	1,050.00
11	695	11/12/2025	39214	ARVEST BANK	JTA building fund purchase	67.98
11	696	11/12/2025	3290	BSN SPORTS, LLC	JEFF SHAFER/ BOYS BASKETBALL-REPLACEMENT PANTS	310.00
11	697	11/12/2025	3290	BSN SPORTS, LLC	JEFF SHAFER/ BOYS BASKETBALL-CAPS	525.00
11	698	11/12/2025	3290	BSN SPORTS, LLC	JEFF SHAFER/ BOYS BASKETBALL-UNIFORM PANTS	630.00
11	700	11/12/2025	4788	AMAZON	SHS SPED SUPPLIES	400.00
11	701	11/12/2025	2580	GARRETT BOOK COMPANY	SHS LIBRARY BOOKS	810.00
11	702	11/12/2025	35705	STAPLES BUSINESS ADVANTAGE	SPED SUPPLIES	2,000.00

Encumbrance Register

Options: Year: 2025-2026, Date Range: 7/1/2025 - 6/30/2026, PO Range: 670 - 49999, Fund(s): GEN FUND-FOR OP

Fund	PO No	Date	Vendor No	Vendor	Description	Amount
11	703	11/12/2025	4788	AMAZON	WR-145 FAMILY NIGHT STARLA HOWARD	104.70
11	704	11/12/2025	11026	SCHOLASTIC BOOKCLUBS INC	WR-145 FAMILY NIGHT STARLA HOWARD	479.85
11	705	11/12/2025	4788	AMAZON	WR-145 FAMILY NIGHT STARLA HOWARD	100.00
11	706	11/14/2025	38922	Ann Elizabeth Mills	Jan 5 on site PD	100.00
11	707	11/14/2025	51055	AMIRA LEARNING INC	Jan 5 on site PD	2,890.00
11	708	11/18/2025	39214	ARVEST BANK	JTA building funds	36.12
11	709	11/18/2025	4788	AMAZON	TITLE I ART NIGHT	550.00
11	710	11/18/2025	38	BLICK ART MATERIALS	TITLE I ART NIGHT	4,250.00
11	711	11/18/2025	38885	SCHOOL SAFE ID LLC	HM SafeID Replacement	1,014.95
11	712	11/18/2025	4788	AMAZON	Purchase items for classroom and office	1,000.00
11	713	11/18/2025	34085	ARLEN GOODFOX	SINGER	400.00
11	714	11/18/2025	39214	ARVEST BANK	ESKIMO JOES	663.65
11	715	11/18/2025	3290	BSN SPORTS, LLC	SEBASTIAN BARAHONA/ HS BOYS SOCCER	2,560.00
11	716	11/18/2025	39214	ARVEST BANK	TESTING SUPPLIES	1,000.00
11	717	11/18/2025	3290	BSN SPORTS, LLC	JASON MADONNA/ FOOTBALL	5,200.00
11	718	11/18/2025	646	FOLLETT SOFTWARE, LLC	LIBRARY LABELING AND PROCESSING	96.58
11	719	11/19/2025	4788	AMAZON	RBI SUPPLIES	538.45
11	720	11/19/2025	39214	ARVEST BANK	SMS MEALS	591.00
11	721	11/19/2025	51172	TYLER THURMAN	Dance Troupe	150.00
11	722	11/20/2025	6638	MARTY THURMAN	MC	150.00
11	723	11/20/2025	10625	OKLA. STATE SCHOOL BOARDS ASSC	Asst Superintendent PD Training Registrations	500.00
11	724	11/20/2025	50910	KOY BEARSTAIL	DANCER	150.00
11	725	11/20/2025	85	SHAWNEE OFFICE SYSTEMS INC	SHAWNEE OFFICE SYSTEMS COPIER MAINT	20,000.00
11	726	11/20/2025	39214	ARVEST BANK	NOTARY FOR MARIA CAMPBELL	36.40
11	727	11/20/2025	39214	ARVEST BANK	NOTARY FOR BAILEE MILNER	36.40
11	728	11/20/2025	11	BANCFIRST INSURANCE SERVICES INC	NOTARY BOND/STAMP FOR MARIA CAMPBELL	53.50
11	729	11/20/2025	11	BANCFIRST INSURANCE SERVICES INC	NOTARY BOND/STAMP FOR BAILEE MILNER	53.50
11	730	11/21/2025	4827	OKLAHOMA CHORAL DIRECTOR ASSOC	MCKENZIE GRAVES/HS CHOIR	250.00
11	731	11/21/2025	37492	OKMEA	MCKENZIE GRAVES/HS CHOIR	150.00
11	732	11/21/2025	3290	BSN SPORTS, LLC	JEFF SHAFER/ HS BASEBALL	550.00
11	733	11/21/2025	39214	ARVEST BANK	MCKENZIE GRAVES/HS CHOIR	650.00
11	734	11/21/2025	39214	ARVEST BANK	MCKENZIE GRAVES/HS CHOIR	700.00
11	735	11/21/2025	4788	AMAZON	Classroom supplies	2,000.00
11	736	12/01/2025	2150	PINECLIFF PRINTERS INC	Handouts for Jan 5 PD	900.00
11	737	12/01/2025	51176	OSTEMA	STEM Midwinter Conference Registration	50.00

Encumbrance Register

Options: Year: 2025-2026, Date Range: 7/1/2025 - 6/30/2026, PO Range: 670 - 49999, Fund(s): GEN FUND-FOR OP

Fund	PO No	Date	Vendor No	Vendor	Description	Amount
11	738	12/01/2025	51176	OSTEMA	STEM Midwinter Conference Registration (Hilton)	50.00
11	739	12/01/2025	39214	ARVEST BANK	Project Respect Conference Travel	105.00
11	740	12/02/2025	4788	AMAZON	MIKEL BLITCH/GIRLS SOCCER	514.27
11	741	12/02/2025	4788	AMAZON	GRAVES/HS CHOIR	150.00
11	742	12/02/2025	4788	AMAZON	STAPLER , CONSTRUCTION PAPER , TAPE , BATTERIES	500.00
11	743	12/03/2025	51179	FAST LANE LEARNING, LLC	Jan 5 on site PD	4,400.00
11	744	12/03/2025	39214	ARVEST BANK	Shelves for GT	750.00
11	745	12/03/2025	4788	AMAZON	Toner	100.00
11	746	12/03/2025	10661	SCHOOL SPECIALTY LLC	McKinney Vento	1,000.00
11	747	12/03/2025	39214	ARVEST BANK	McKinney Vento	2,000.00
11	748	12/03/2025	39214	ARVEST BANK	SMS Gen Fund 11-LITERACY SUPPORT	495.00
11	749	12/04/2025	39214	ARVEST BANK	Indian Ed Christmas	260.00
11	750	12/04/2025	11026	SCHOLASTIC BOOKCLUBS INC	HM 25-26 TITLE 1 FAMILY Night PURCHASE ITEMS	571.20
11	751	12/04/2025	4788	AMAZON	HM 25-26 TITLE 1 FAMILY NIGHT PURCHASE ITEMS	289.60
11	752	12/04/2025	39214	ARVEST BANK	Classroom Supplies	2,000.00
11	753	12/04/2025	36902	KAGAN PROFESSIONAL DEVELOPEMENT	JAN 5 PD DAY	9,090.00
11	754	12/05/2025	39214	ARVEST BANK	Food Science	3,000.00
11	755	12/05/2025	4788	AMAZON	FCS Classroom Supplies from Amazon	1,600.00
11	756	12/05/2025	4788	AMAZON	Classroom supplies for kindergarten new room Budka	200.00
11	757	12/05/2025	4788	AMAZON	LIBRARY ALLOCATED FUNDS	253.56
11	758	12/05/2025	2580	GARRETT BOOK COMPANY	LIBRARY ALLOCATED FUNDS	917.74
11	759	12/05/2025	50401	SIDELINE POWER	CHAD JOHNSON/HS BOYS BASKETBALL	385.00
11	760	12/05/2025	3290	BSN SPORTS, LLC	JEFF SHAFER/HS BASEBALL	45.00
11	761	12/05/2025	3290	BSN SPORTS, LLC	LICKLIDER-STAPLETON/ HS TRACK	2,000.00
11	762	12/05/2025	39214	ARVEST BANK	ANDREW MCCUNE/WRESTLING	1,500.00
11	763	12/05/2025	51178	SUSAN R DUECK	NonPublic Para	13,853.21
11	764	12/05/2025	51170	SONYA DUECK	NonPublic Para	13,853.21
11	765	12/08/2025	3290	BSN SPORTS, LLC	HOLLAND- BASKETBALL NETS	200.00
11	766	12/08/2025	37492	OKMEA	Winter Conference	960.00
11	767	12/09/2025	51182	TRILBY SCHMIDT	CONTRACT SPEECH THERAPY	36,000.00
11	768	12/09/2025	1231	GREAT PLAINS GRAPHICS	JOHNSON-NIKE HOODIES	315.00
11	769	12/09/2025	35705	STAPLES BUSINESS ADVANTAGE	KFarris-SMS	747.30
11	770	12/09/2025	35011	Graham M Primeaux	travel ocie	60.00
11	771	12/09/2025	40731	W Buffalo Girl Frances Simmons	travel ocie	60.00
11	772	12/09/2025	37594	TARA GOODFOX	travel ocie	60.00
11	773	12/09/2025	33973	Angela L Goodfox	travel ocie	60.00
11	774	12/09/2025	50702	Paula James L Smith	travel ocie	60.00

Encumbrance Register

Options: Year: 2025-2026, Date Range: 7/1/2025 - 6/30/2026, PO Range: 670 - 49999, Fund(s): GEN FUND-FOR OP

Fund	PO No	Date	Vendor No	Vendor	Description	Amount
11	775	12/09/2025	37693	Nancy Fehmer	travel ocie	60.00
11	776	12/10/2025	50371	McKenzie E Graves	OKMEA Conference Travel	150.00
11	777	12/10/2025	51076	Leah K Willis	OKMEA Conference Travel	150.00
Non-Payroll Total:						\$182,338.29
Payroll Total:						\$0.00
Balance Forward:						\$0.00
Report Total:						\$182,338.29

Encumbrance Register

Options: Year: 2025-2026, Date Range: 7/1/2025 - 6/30/2026, PO Range: 145 - 49999, Fund(s): BUILDING

Fund	PO No	Date	Vendor No	Vendor	Description	Amount
21	146	11/04/2025	38855	JOHNSON FENCE CO INC	LOWER FENCE AT BASEBALL PRESSBOX	1,000.00
21	147	11/12/2025	39501	SIMPLOT TURF & HORTICULTURE	KERRY WILSON/GROUNDS-SEED	225.00
21	148	11/12/2025	39989	SUNBELT RENTALS	MAINTENANCE EQUIPMENT RENTALS	2,000.00
21	152	11/18/2025	4952	HERC RENTALS	MAINTENANCE EQUIPMENT RENTAL	2,500.00
21	153	11/18/2025	38954	GLASS ACTION	JTA GLASS REPLACEMENT	1,100.00
21	154	11/20/2025	33327	MIKE'S LAWN EQUIPMENT INC	ATHLETICS-LAWN EQUIPMENT REPAIR	470.00
21	155	12/04/2025	35036	OKLAHOMA DEPT OF LABOR	DISTRICT HOT WATER HEATER INSPECTIONS	2,450.00
21	156	12/05/2025	39214	ARVEST BANK	VEHICLE GPS	2,000.00
Non-Payroll Total:						\$11,745.00
Payroll Total:						\$0.00
Balance Forward:						\$0.00
Report Total:						\$11,745.00

Encumbrance Register

Options: Year: 2025-2026, Date Range: 7/1/2025 - 6/30/2026, PO Range: 23 - 49999, Fund(s): 33 2023 BUILDING BOND FUND

Fund	PO No	Date	Vendor No	Vendor	Description	Amount
33	23	11/05/2025	38885	SCHOOL SAFE ID LLC	Surface GO2 TABLET, ENCLOSURE, AND BADGE PRINTER	1,648.00
33	24	11/12/2025	38651	MASS ARCHITECTS INC	TENNIS ARCHITECT FEES	16,267.45
33	25	11/12/2025	32759	ULINE SUPPLY SPECIALISTS	ULINE UTILITY TILT TRUCK	693.70
33	26	11/12/2025	37330	TEKK INTERNATIIONAL	TEKK RADIOS	1,703.00
33	27	11/12/2025	39214	ARVEST BANK	FENCE PANIC BAR-WILL ROGERS	543.97
33	28	11/14/2025	51167	Walco LLC	MS SKYLIGHT	15,931.20
33	29	11/14/2025	35092	GO CS INC	PRESSBOX INTERNET	6,155.90
33	30	12/09/2025	50174	ADIRA LLC	District part for fcc cybersecurity pilot	15,100.00
33	31	12/09/2025	32536	DELL MARKETING L.P.	Desktop for Concurrent Class Program	863.54
33	32	12/09/2025	51181	HOWARD TECHNOLOGY SOLUTIONS	Go BOX -A device to help setup Chromebooks	775.00
33	33	12/09/2025	10669	UNITED SYSTEMS INC	Adding Access Control JTA	3,187.62
33	34	12/09/2025	39069	CLASS LINK	Classlink Features - 2 Years	1,648.00

Non-Payroll Total:	\$64,517.38
Payroll Total:	\$0.00
Balance Forward:	\$0.00
Report Total:	\$64,517.38

Encumbrance Register

Options: Year: 2025-2026, Date Range: 7/1/2025 - 6/30/2026, PO Range: 5 - 49999, Fund(s): 34 2024 BUILDING BOND FUND

Fund	PO No	Date	Vendor No	Vendor	Description	Amount
34	5	10/27/2025	13190	WINKLER O'HEAD DOOR INC	OVERHEAD DOOR REPLACEMENTS- TRANSPORTATION	9,670.00
Non-Payroll Total:						\$9,670.00
Payroll Total:						\$0.00
Balance Forward:						\$0.00
Report Total:						\$9,670.00

Encumbrance Register

Options: Year: 2025-2026, Date Range: 7/1/2025 - 6/30/2026, PO Range: 14 - 49999, Fund(s): 81 GIFT FUND

Fund	PO No	Date	Vendor No	Vendor	Description	Amount
81	14	10/31/2025	51157	WINTCO MANAGEMENT CORP	COMPUTER MONITORS	500.00
81	15	11/07/2025	3290	BSN SPORTS, LLC	JEFF SHAFER/HS BASEBALL	1,000.00
81	16	11/07/2025	39214	ARVEST BANK	KATHY CHAMBLIN/GIRLS GOLF	80.00
81	17	11/10/2025	4788	AMAZON	SEF GRANT LACY ARNOLD JEFF	1,246.76
81	18	11/10/2025	4788	AMAZON	SEF GRANT LESLIE GOTHARD - JEFF	1,099.69
81	19	11/12/2025	39214	ARVEST BANK	JTA SEF grant Wells	1,135.94
81	20	11/12/2025	39214	ARVEST BANK	JTA SEF Grant Rendleman	1,196.94
81	21	11/12/2025	50463	RULING OUR EXPERIENCES, INC (ROX)	JTA ROX Grant	1,000.00
81	22	11/12/2025	39214	ARVEST BANK	JTA ROX SEF Grant	250.00
81	23	11/12/2025	39214	ARVEST BANK	JTA SEF Grant Wilcox	1,134.04
81	24	11/12/2025	39214	ARVEST BANK	WR-145 ROBYN BUTLER SEF GRANT	580.00
81	25	11/12/2025	4788	AMAZON	SEF GRANT-LIBRARY MAKERSPACE	692.96
81	26	11/12/2025	4788	AMAZON	SEF GRANT-EXPANDING GEOMETRIC KNOWLEDGE	1,001.24
81	27	11/12/2025	4788	AMAZON	SMS-Gift Fund 81-SEF GRANT-Supplies-Keely Tolin	1,961.65
81	28	11/12/2025	4788	AMAZON	SEF GRANT WOMACK-SEQ	1,002.91
81	29	11/12/2025	4788	AMAZON	SEF GRANT GROUP-SEQ	1,223.04
81	30	11/12/2025	4788	AMAZON	SEF GRANT HAYNES-SEQ	1,320.00
81	31	11/20/2025	39214	ARVEST BANK	JTA SEF Grant Ice, Ice Baby	1,948.01
81	32	11/20/2025	55	LAKESHORE LEARNING MATERIALS	SEF GRANT 25-26 PURCHASE ITEMS FOR Bushong's grant	747.35
81	33	11/20/2025	4788	AMAZON	HM SEF GRANT 25-26 PURCHASE ITEMS FOR Heck's grant	968.71
81	34	11/20/2025	40903	CTBOOK HOLDINGS, LLC	HM SEF Grant 25-26 Kroenke purchase books	1,157.15
81	35	11/20/2025	4788	AMAZON	SEF GRANT 25-26 Purchase items Lovelady	448.58
81	36	11/20/2025	39214	ARVEST BANK	HM SEF GRANT 25-26 PURCHASE ITEMS FOR Lovelady	135.24
81	37	11/20/2025	11026	SCHOLASTIC BOOKCLUBS INC	SEF GRANT24-25 PURCHASE ITEMS FOR LOVELADY'S GRANT	241.98
81	38	11/20/2025	51165	ENLIGHTENED MINDS, LLC	STARLA HOWARD SEF WR-145	464.98
81	39	11/20/2025	4788	AMAZON	WR-145 SHELBY COWDEN & EMILY PARRIS SEF	757.50
81	40	11/20/2025	39214	ARVEST BANK	SEF GRANT FIELDS-SEQ	780.00
81	41	11/20/2025	4788	AMAZON	SEF GRANT BATTIGE-SEQ	650.00
81	42	11/20/2025	44	FOLLETT CONTENT SOLUTIONS LLC	SEF GRANT BATTIGE-SEQ	400.00
81	43	11/20/2025	39214	ARVEST BANK	SMS-Gift Fund 81-SEF GRANT-Printers-C Pennington	758.00
81	44	11/20/2025	4788	AMAZON	SMS-Gift Fund 81-SEF GRANT-Supplies-C Pennington	404.89
81	45	12/03/2025	4788	AMAZON	SEF grant for Hannah Jett	1,174.59
81	46	12/03/2025	4788	AMAZON	SEF GRANT FOR KAREN WATKINS	1,940.99

Encumbrance Register

Options: Year: 2025-2026, Date Range: 7/1/2025 - 6/30/2026, PO Range: 14 - 49999, Fund(s): 81 GIFT FUND

Fund	PO No	Date	Vendor No	Vendor	Description	Amount
81	47	12/03/2025	4788	AMAZON	SEF GRANT FOR MCKEY	1,238.52
81	48	12/03/2025	55	LAKESHORE LEARNING MATERIALS	SEF GRANT MCCABE	1,237.37
81	49	12/09/2025	4788	AMAZON	SMS Gift Fund 81 SEF GRANT- Katy McCoy-Garden	760.44
Non-Payroll Total:						\$32,639.47
Payroll Total:						\$0.00
Balance Forward:						\$0.00
Report Total:						\$32,639.47

MEMO

To: The Board of Education
From: Anita Miller, School Activity Fund Clerk *AM*
Date: December 8, 2025
Subject: New School Activity Fund Account

I am requesting the addition of a new School Activity Fund Account for Shawnee Middle School. The new account will be as follows:

National History Day #883

The addition of this account will allow National History Day group to raise and deposit funds in to the account. The funds will used to pay for entry fees, travel cost and any other expenses that may be encumbered.

RECOMMENDATION: That the Board approves the request as presented.

**Request to Set-Up or Revise
An Activity Account**

(This form must be submitted and approved by the Finance Department before it is put on the Board Agenda.)

Date: Nov. 13, 2025
From: Cherity Pennington
Name of New Account: National History Day
Purpose of Account: _____

This account will be used for funds needed for Shawnee Middle School students to
participate in regional, state, or national-level National History Day competitions.

Person Responsible for Account:

Cherity Pennington Shawnee Middle School (405) 273-0403, ext. 7129

(Name) **(Address/Site)** **(Phone #/Ext.)**

Cherity Pennington Librarian _____
(Signature) **(Title)**

Principal/Administrator for Account:

_____ SMS 405-273-0403
(Signature) **(Site)** ext 1003
(Phone #/Ext.)

Finance Department:

_____ 11/17/25
(Signature) **(Date)**

ACTIVITY OFFICE USE ONLY - DO NOT WRITE BELOW

Date approved by Board: f

Name of Account: National History Day

Project Number: 883

MEMO

To: The Board of Education
From: Anita Miller, School Activity Fund Clerk *AM*
Date: December 8, 2025
Subject: School Activity Fund Transfers

I am requesting the transfer of \$1,029.50 from various School Activity Funds to the Refunds & Reimbursement account # 942.

The transfer is to reimburse the bus driver's salary, FICA, and mileage for various trips taken during October 2025.

RECOMMENDATION: That the Board approves the transfer as presented.

OCTOBER ACTIVITY TRIP REPORT 2025

Trip ID	Description	Trip Date	Driver Description	Driver Hours	Driver Rate	OT Hours	OT Rate	Total Time	Mileage	Total	District Paid Trip?	Within 30 Miles?	Adjusted Mileage	Adjusted Charges	
Account Name: 833 - SHS Gifted and Talented															
833 - SHS Gifted and Talented	AT-01656	HS GT - Zoo	10/22/2025	BLOOM, MEGAN	0.00	\$0.00	0.00	\$0.00	0	85	\$85.00	N	N	55	\$ 27.50
833 - SHS Gifted and Talented	AT-00901	HS GT - OBU	10/3/2025	BURNETT, JEREMY	0.00	\$0.00	0.00	\$0.00	0	10	\$10.00	N	Y	0	\$ -
														\$ 27.50	
Account Name: 837 - SHS FCCLA															
837 - SHS FCCLA	AT-01558	HS FCCLA - Seminole	10/2/2025	STANTON, LYNDA	0.00	\$0.00	0.00	\$0.00	0	54	\$54.00	N	Y	0	\$ -
														\$ -	
Account Name: 849 - SHS E-SPORTS															
849 - SHS E-SPORTS	AT-01609	HS Esports - Norman North	10/27/2025	BOREN, RYAN	0.00	\$0.00	0.00	\$0.00	0	89	\$89.00	Y	N	59	\$0.00
														\$ -	
Account Name: 882 - Academic Team															
882 - Academic Team	AT-01606	MS ACAD BOWL - Bethel	10/3/2025	MURRAY, STEPHANIE	0.00	\$0.00	0.00	\$0.00	0	31	\$31.00	Y	Y	0	\$0.00
														\$ -	
Account Name: 888 - SMS E Sports															
888 - SMS E Sports	AT-01661	MS Esports - Norman North	10/27/2025	SATAWAKE, DEVIN	0.00	\$0.00	0.00	\$0.00	0	95	\$95.00	Y	N	65	\$0.00
														\$ -	
Account Name: 896 SMS Cheerleaders															
896 SMS Cheerleaders	AT-01411	MS CHEER - Del City	10/21/2025	THOMAS, BRADLEY	2.00	\$21.08	3.50	\$31.62	5.5	69	\$221.83	N	N	39	\$ 58.50
														\$ 58.50	
Account Name: 909 - SMS Eighth Grade															
909 - SMS Eighth Grade	AT-01591	MS - PAAC	10/10/2025	RELIFORD, STEVEN	0.00	\$0.00	2.00	\$25.16	2	11	\$61.32	N	Y	0	\$ -
909 - SMS Eighth Grade	AT-01591	MS - PAAC	10/10/2025	WILBURN, JENNIFER	2.00	\$17.72	0.00	\$0.00	2	11	\$46.44	N	Y	0	\$ -
909 - SMS Eighth Grade	AT-01591	MS - PAAC	10/10/2025	CAGLE, RHONDA	2.00	\$20.60	0.00	\$0.00	2	13	\$54.20	N	Y	0	\$ -
909 - SMS Eighth Grade	AT-01591	MS - PAAC	10/10/2025	WELCH, JOYCE	0.00	\$0.00	2.00	\$28.74	2	10	\$67.48	N	Y	0	\$ -
														\$ -	
Account Name: 922 JTA															
922 JTA	AT-01500	JTA - OU	10/29/2025	HOLLAND, HANNAH	0.00	\$0.00	0.00	\$0.00	0	87	\$87.00	N	N	57	\$ 28.50
922 JTA	AT-01517	JTA - Sunshine Shelly's	10/10/2025	THOMAS, BRADLEY	0.00	\$0.00	2.00	\$31.62	2	12	\$75.24	N	Y	0	\$ -
922 JTA	AT-01517	JTA - Sunshine Shelly's	10/10/2025	ORTON, JAMIE	2.00	\$19.16	0.00	\$0.00	2	14	\$52.32	N	Y	0	\$ -
922 JTA	AT-01586	JTA - OKC Fairgrounds	10/9/2025	KOCH, CHRIS	0.00	\$0.00	0.00	\$0.00	0	85	\$85.00	N	N	55	\$ 27.50
														\$ 56.00	
Account Name: 924 - Will Rogers Elementary															
924 - Will Rogers Elementary	AT-01528	WR 1st Gr - Jasmine Moran Seminole	10/10/2025	POWER, JAMIELYN	0.00	\$0.00	4.50	\$20.09	4.5	42	\$132.41	N	Y	0	\$ -
924 - Will Rogers Elementary	AT-01528	WR 1st Gr - Jasmine Moran Seminole	10/10/2025	ANTHONY, DONALD	0.00	\$0.00	4.50	\$32.34	4.5	47	\$192.53	N	Y	0	\$ -
924 - Will Rogers Elementary	AT-01588	WR Leadership - Legacy Parenting	10/2/2025	NEELY, SERENA	0.00	\$0.00	0.00	\$0.00	0	8	\$8.00	N	Y	0	\$ -
924 - Will Rogers Elementary	AT-01626	WR 1st-3rd Gr - OKC Civic Center	10/21/2025	WILBURN, JENNIFER	5.00	\$17.72	0.00	\$0.00	5	78	\$166.60	N	N	48	\$ 72.00
924 - Will Rogers Elementary	AT-01626	WR 1st-3rd Gr - OKC Civic Center	10/21/2025	RICHARDSON, JEFF	5.00	\$19.16	0.00	\$0.00	5	77	\$172.80	N	N	47	\$ 70.50
924 - Will Rogers Elementary	AT-01626	WR 1st-3rd Gr - OKC Civic Center	10/21/2025	LAKINS, GARY	3.00	\$23.92	2.00	\$35.88	5	76	\$219.52	N	N	46	\$ 69.00
924 - Will Rogers Elementary	AT-01626	WR 1st-3rd Gr - OKC Civic Center	10/21/2025	RELIFORD, STEVEN	0.00	\$0.00	5.00	\$25.16	5	78	\$203.80	N	N	48	\$ 72.00
924 - Will Rogers Elementary	AT-01626	WR 1st-3rd Gr - OKC Civic Center	10/21/2025	POWER, JAMIELYN	0.00	\$0.00	5.00	\$20.09	5	76	\$176.45	N	N	46	\$ 69.00
														\$ 352.50	
Account Name: 926 - Shawnee Early Childhood Center															
926 - Shawnee Early Childhood Center	AT-01454	SECC - Cornerstone Kids Ranch	10/10/2025	LAKINS, GARY	4.00	\$23.92	0.50	\$35.88	4.5	98	\$211.62	N	N	68	\$ 102.00
926 - Shawnee Early Childhood Center	AT-01454	SECC - Cornerstone Kids Ranch	10/10/2025	JOHNSON, NANCY	0.00	\$0.00	5.00	\$30.90	5	101	\$255.50	N	N	71	\$ 106.50
926 - Shawnee Early Childhood Center	AT-01490	SECC - Cornerstone Kids Ranch	10/21/2025	JOHNSON, NANCY	0.00	\$0.00	5.00	\$30.90	5	106	\$260.50	N	N	76	\$ 114.00
926 - Shawnee Early Childhood Center	AT-01490	SECC - Cornerstone Kids Ranch	10/21/2025	ANTHONY, DONALD	0.00	\$0.00	5.00	\$32.34	5	101	\$262.70	N	N	71	\$ 106.50
926 - Shawnee Early Childhood Center	AT-01490	SECC - Cornerstone Kids Ranch	10/21/2025	ORTON, JAMIE	5.00	\$19.16	0.00	\$0.00	5	101	\$196.80	N	N	71	\$ 106.50
926 - Shawnee Early Childhood Center	AT-01603	SECC - Jasmine Moran	10/23/2025	RELIFORD, STEVEN	0.00	\$0.00	5.00	\$25.16	5	46	\$171.80	N	Y	0	\$ -
														\$ 535.50	
Account Name: 975 SMS FCCLA															
975 SMS FCCLA	AT-01554	MS FCCLA - Seminole	10/2/2025	JOHNSON, SHELLY	0.00	\$0.00	0.00	\$0.00	0	54	\$54.00	N	Y	0	\$ -
														\$ -	

total \$1,029.50

MEMO

To: The Board of Education
From: Anita Miller, School Activity Fund Clerk *AM*
Date: December 8, 2025
Subject: School Activity Fund Transfers

I am requesting the transfer of \$250.00 from School Activity Fund account # 917 (Jefferson Elementary) to SHS Theatre account # 842.

The transfer is to pay for students from Jefferson attending a play performed by SHS Theatre.

RECOMMENDATION: That the Board approves the transfer as presented.



Anita Miller <anmiller@shawnee.k12.ok.us>

Donation to SHS Theatre

Sarah Haynes <sarhaynes@shawnee.k12.ok.us>
To: Anita Miller <anmiller@shawnee.k12.ok.us>

Thu, Dec 4, 2025 at 10:22 AM

Jefferson (130) would like to request a transfer of \$250 from Student Activity Account (917) to SHS Theatre for play attendance.

Thank you for your help.

On Thu, Dec 4, 2025 at 9:40 AM Sarah Haynes <sarhaynes@shawnee.k12.ok.us> wrote:

Needing a purpose.

[Quoted text hidden]

MEMO

To: The Board of Education
From: Anita Miller, School Activity Fund Clerk *AM*
Date: December 8, 2025
Subject: School Activity Fund Transfers

I am requesting the transfer of \$220.00 from School Activity Fund account # 915 (Horace Mann Elementary) to SHS Theatre account # 842.

The transfer is to pay for students from Horace Mann attending the play "North Pole's Got Talent" performed by SHS Theatre.

RECOMMENDATION: That the Board approves the transfer as presented.



Anita Miller <anmiller@shawnee.k12.ok.us>

Donation to SHS Theater from HM

1 message

Christi Lovelady <chrlovelady@shawnee.k12.ok.us>
To: Anita Miller <anmiller@shawnee.k12.ok.us>
Cc: Debra Pinkston <debpinkston@shawnee.k12.ok.us>

Fri, Dec 5, 2025 at 10:56 AM

We need to donate \$220.00 to SHS Theater (account 842) from our Horace Mann Student Activity (account 915) for attending the play "North Pole's Got Talent" on December 5, 2025 at 9:30am.

Thank you

--

Christi Lovelady, M.Ed.
Principal
Horace Mann Elementary
412 N. Draper
Shawnee, OK 74801
405-273-1806
Shawnee Public Schools



Well Being Notice: Receiving this email outside of normal working hours? Managing work and life responsibilities is unique for everyone. I have sent this email at a time that works for me. Please respond, if necessary, at a time that works for you.

Maintenance Surplus

1-Dec-25

Site	Description of Item	Condition (Good, Fair, Poor)	Quantity
DISTRICT-MAINTENANCE	ASSORTED STEEL PIPE	FAIR	ASSORTED
DISTRICT-MAINTENANCE	ROCKWELL LATHE	FAIR	1
DISTRICT-MAINTENANCE	DELTA PLANER	FAIR	1
DISTRICT-MAINTENANCE	DELTA BANDSAW	FAIR	1

MAR 11-19-25

APPLICATION FOR SANCTIONING
OF PARENT ORGANIZATIONS AND BOOSTER CLUBS

Organization Name: Shawnee Wrestling Organization

Officer's Name	Position	Term Ends	Address	Phone Number
Travis Gilbert	President	09/2025		405-481-0566
Oz Mitchell	Vice President	09/2025		405-973-5426
Renae Taber	Treasurer	09/2025		405-973-4864
Monique Davis	Secretary	09/2025		405-788-8255
Jennifer Carter	Boys Rep	09/2025		405-305-9696
Rodney Thomason	Girls Rep	09/2025		405-820-2668
Chicago Herron	Alumni Rep	09/2025		405-493-4049

Describe how officers are appointed or elected: Open elections are held at the May Booster Club meeting or the next meeting with a quorum.

Are dues or fees required to be a member of the organization? Yes No
If yes, explain: No, Membership dues are not required to be a part of the Shawnee Wrestling Org.

Describe the organization's purpose: We promote the sport of Wrestling, good sportmanship and positive leadership in the Shawnee Community. We hope to be able to support our Wrestling program with any items not provided in the School Wrestling program budget.

Proposed list of fundraisers:

- | | |
|---|----------------------------|
| A. <u>Jerky</u> | Month
<u>Year round</u> |
| B. <u>Wrestling Sponsorships / Telethon</u> | <u>Sept - Nov</u> |
| C. <u>Egg my Yard</u> | <u>April</u> |

Proposed list of monetary contributions:

- | | |
|--|-------------|
| A. <u>No designated list of strictly monetary contributions - most money's received are part of fundraisers.</u> | Est. Amount |
| B. _____ | _____ |
| C. _____ | _____ |

Proposed list of material contributions:

- | | |
|---------------------------------------|-------------------------------|
| A. <u>Shawnee Mills - Pancake Mix</u> | Est. Value
<u>\$100.00</u> |
| B. _____ | _____ |
| C. _____ | _____ |

Please attach a copy of the organization's by-laws and/or constitution, surety bond, budget for previous year and current year, to this application and submit to the Superintendent. Reapplication for sanctioning is required annually.

Signature of Applicant: Renae Taber Date: 05/19/2025

SPEECH-LANGUAGE PATHOLOGY CONTRACT SERVICES AGREEMENT

This agreement is made and entered into December 1, 2025, through May 31, 2026 by Shawnee Public Schools and Trilby D. Schmidt M.S., CCC-SLP, a licensed, ASHA certified, speech-language pathologist. Whereas, Shawnee Public Schools and the Speech-Language Pathologist desire to enter into a written agreement setting forth the terms of the speech-language pathology services contract. Now therefore in consideration of the covenants and agreements hereinafter set forth by the parties hereto mutually agree as follows:

Retention of the Provider

Shawnee Public Schools hereby retains the Speech-Language Pathologist (SLP) as an independent contractor, to perform speech and language therapy for Shawnee Public School students with a current annual IEP or requiring initial placement. .

1. Shawnee Public Schools hereby engages the services of the SLP for the above stated time frame.
2. Contract Relationship between Parties: Shawnee Public Schools and the SLP agree and understand that the relationship between them is based on contract only and is not an employer/employee relationship.
3. Shawnee Public Schools acknowledges that it has no right to control the means or methods by which the Speech-Language Pathologist performs duties or schedules students, so long as those means and methods constitute sound, prudent and professional speech-language therapy practices, that stay within the guidelines of annual timelines and fulfills the eligibility and speech IEP requirements. Speech Pathologist will also comply by the ASHA code of ethics as instituted.
4. All records kept by the SLP are confidential.
5. The SLP is responsible and will comply with all licensing laws for continuing education expenses and licensing dues that occur annually.
6. The SLP will submit weekly notes for Medicaid services for Shawnee Public Schools in accordance with Medicaid guidelines set forth.

Terms

1. Trilby D. Schmidt M.S. CCC-SLP will invoice Shawnee Public Schools every 2 weeks at the rate of \$75.00 per hour for 24 hours weekly per a pay schedule provided by the schools. Mileage will be submitted to Shawnee Public Schools monthly as calculated by the current IRS standard mileage rate for business use. From driveway to driveway, Edmond, OK to Shawnee Public Schools site one way.
2. Term: SLP will be allotted non-paid sick days if needed.
3. Term: No Insurance will be provided by Shawnee Public Schools during the term of this Agreement including accident nor health, nor any other fringe benefits. The Speech-Language Pathologist will be responsible for his/her own professional liability and malpractice insurance, and a copy provided to the

district.

4. Shawnee Public Schools or the Speech-Language Pathologist can terminate the terms of this contract given a written notice of 2 weeks.

No Guarantee As to Results

The SLP represents to Shawnee Public Schools that she will perform the services above as set forth to the best of her ability; however, it is understood and agreed that no guarantee is made by the SLP as to the results to be achieved for the students with which speech-language services are rendered.

Governing Law

This agreement shall be governed by and construed and enforced in accordance with the laws of the State of Oklahoma.

Non-Assigning /Binding Affect

The parties hereto agree and acknowledge that this constitutes their entire agreement and that no other oral or other representations have been made between themselves or any other agent of either of them with respect to the terms of this agreement and that the same may only be modified by a subsequent written agreement.

This agreement is signed and dated:

_____ Date: _____
Speech-Language Pathologist

Allyson Cleveland Date: *12/1/2025*

_____ Date: _____



SHAWNEE PUBLIC SCHOOLS

326 NORTH UNION AVENUE | SHAWNEE, OKLAHOMA 74801-7099 | (405) 273-0653

December 15, 2025

Shawnee Public Schools Board

Board Members,

Oklahoma Secondary School Activities Association (OSSAA) Cooperative Agreement with South Rock Creek School and Shawnee Middle School for the 25-26 school year has been submitted for discussion and for the following activity:

Soccer



SHAWNEE PUBLIC SCHOOLS

326 NORTH UNION AVENUE | SHAWNEE, OKLAHOMA 74801-7099 | (405) 273-0653

Dear Shawnee Board of Education,

I am submitting this request for approval to pay-off our lease purchase with Sovereign Bank for the purchase of Ideal Impact HVAC Control Systems, in the payoff amount of \$589,241.62 using Pottawatomie County sales tax funds designated for capital improvements and facility needs.

Project Purpose and Justification

The payoff will leverage current funding from Pottawatomie County to minimize the cost of interest on our current lease purchase.

Approval

_____ Board of Education President

_____ Superintendent



SHAWNEE PUBLIC SCHOOLS

326 NORTH UNION AVENUE | SHAWNEE, OKLAHOMA 74801-7099 | (405) 273-0653



SHAWNEE PUBLIC SCHOOLS

326 NORTH UNION AVENUE | SHAWNEE, OKLAHOMA 74801-7099 | (405) 273-0653

Dear Shawnee Board of Education,

I am submitting this request for approval to pay-off our lease purchase with Sovereign Bank for the purchase of Windows at Central Office, in the payoff amount of \$158,623.74 using Pottawatomie County sales tax funds designated for capital improvements and facility needs.

Project Purpose and Justification

The payoff will leverage current funding from Pottawatomie County to minimize the cost of interest on our current lease purchase.

Approval

_____ Board of Education President

_____ Superintendent



SHAWNEE PUBLIC SCHOOLS

326 NORTH UNION AVENUE | SHAWNEE, OKLAHOMA 74801-7099 | (405) 273-0653

Current Employees Only

Exhibit A

DECEMBER 15, 2025 - PERSONNEL BOARD ACTION

NAME	JOB & SITE	EFFECTIVE DATE
RETIREMENT SUPPORT		
Huskey, Bill	Director of Maintenance / CO	1/30/26
McKinney, Alicia	Paraprofessional / Will Rogers	10/31/25
RESIGNATION CERTIFIED		
Bennett, Shawna	Teacher / SECC	12/19/25
Lewis, Laura	Teacher/ SHS	12/19/25
RESIGNATION SUPPORT		
Fox, Karleigh	Special Ed Paraprofessional / SMS	12/19/25
Gawf, Betty	Bus Monitor / Transportation	10/28/25
Jesseph, Julia	Director of Child Nutrition / CO	01/02/26
Ledinski, Terrie	Food Service Manager / SECC	11/12/25 (Deceased)
McCain, Whitney	Administrative Assistant / Will Rogers	11/13/25
Wilburn, Jennifer	Bus Driver / Transportation	10/29/25
CONTINUING CONTRACT FROM TEMPORARY CONTRACT 1/1/2026		
Koch, Christopher		
Manion, Natalie		
Tiger, Emily		
4TH SEMESTER ON TEMPORARY CONTRACT 1/1/2026		
Ahhaitty, Misty	Lyle, Stephanie	
Baggett, aLanna	Maltos, Miranda	
Beheler, Kataryna	Meadows, Anna	
Brock, Emily	Mehlhoff, Hannah	
Burnett, Hunter	Mincher, Destiny	
Chism, Natalie	Murray, Stephanie	
Clayton, Abigail	Rowell, Mallory	
Crowder, Victoria	Ryan, Sarah	
Davis, Callie	Setzer, Rosco	
Dickens, Pamela	Shields, Troy	
Douglas, Kyle	Speers, Reba	
Evans, Joanna	Stanton, Linda	
Hall, Christopher N	States, Amy	
Hanke, Shae	Swadley, Thresa	
Higgins, Daniel	Townsend, Jeseca	
Hilton, William	Washburn, Tina Coker	
Irvine, Anna	Wendelberger, Matthew	
Jones, Omar	Willburn, Kaylee	
Jonker, Alisha	Wilcox, Brenda	
Kime, Jamie		

3RD SEMESTER ON TEMPORARY CONTRACT 1/1/2026

McGuire, Kilby	Rittenhouse, Adaleena
Morris, Lara	Wahpepah, Candice

2ND SEMESTER ON TEMPORARY CONTRACT 1/1/2026

Alley, Katy	Kennedy, Savanna
Baker, Brittany	Knutson, Jordan
Battige, Stacy	Koster, Haley
Bias, Sarah	Kuehn, Erin
Boatman, Mason	Nichols, Anthony
Boren, Samantha	Owens, Michelle
Bullock, Richard	Paolini-Long, Jennifer
Charron, Emily	Payne, Katie
Craven, Joseph	Price, Nolan
Donaghey, Holly	Ramsey, Russell
Farris, Cierra	Rose, Sarah
Ford, Stephen	Sartin, Kristyn
Gomez, Harmony	Simmons, Brent
Goodnight, Abbigail	Smith, Stephen
Grove, Hailee	Steiner, Krista
Haworth, Robin	Wellman, Derek
Holmes, Chason	Whiteman, Desiree
Johnson, Chadwick	Wiley, Jaden
Jones, Ashleigh	Willis, Leah

New to the District Employees

Exhibit B

DECEMBER 15, 2025 - PERSONNEL BOARD ACTION

NAME	JOB & SITE	EFFECTIVE DATE
------	------------	----------------

RECOMMEND TO HIRE ON TEMPORARY CONTRACT 25-26

SUPPORT

RECOMMEND TO HIRE

Adams, Destiny	Daycare Paraprofessional / SECC	11/13/25
Burnett, Hayden	Adjunct Biology Teacher / SHS	01/05/26
Campbell, Maria	Administrative Assistant / Will Rogers	11/12/25
Horstman, Jessah	Special Ed Paraprofessional / Will Rogers	12/01/25
Plank, Shirley	Custodian / PAAC	11/13/25
Stiles, Evan	Director of Maintenance / CO	12/01/25