

RAYMOND CENTRAL PUBLIC SCHOOLS - DISTRICT #55-0161
BOARD OF EDUCATION REGULAR MEETING, WEDNESDAY, NOVEMBER 16, 2022
- 6:00 PM
RAYMOND CENTRAL JR-SR HIGH SCHOOL - MUSTANG ROOM
1800 WEST AGNEW ROAD
RAYMOND, NE 68428-9783

AGENDA

1. Call to Order and Pledge of Allegiance
2. Motion to Excuse Board Member's Absence
3. Open Meeting Law
4. Consent Agenda
 - 4.1. Regular Minutes of October 12, 2022
 - 4.2. Financial Statement/Report
 - 4.3. Monthly Bills
5. Correspondence/Recognition
6. Public Forum
7. Reports
 - 7.1. Update from BVH on facility master plans
 - 7.2. Administrative Reports
 - 7.3. Student Board Member
 - 7.4. Superintendent's Report
 - 7.4.1. NASB Monthly Update
 - 7.4.2. Update on Superintendent Goals
 - Goal 1: Develop a visible presence within the schools, the school community, and the state.
 - Goal 2: Foster a learning environment in which every student has the maximum opportunity to achieve academic excellence.
 - Goal 3: Continue the development of a 10 year facilities strategic plan for implementation that addresses maintenance and improvements for existing building assets and new construction.

Goal 4: Continue the development of safety and security practices for Raymond Central Public Schools.

7.4.3. Safety Report

7.4.4. Important Upcoming Dates:

7.5. Facilities Report

7.6. Review of Technology Plan

7.7. Board Committee Reports

7.7.1. Committee on American Civics (Breitkreutz-chair, Burklund, Matulka)

7.7.2. Transportation Committee (Breitkreutz-chair, Lange, Matulka)

7.7.3. Finance Committee (Blanchard-chair, Breitkreutz, Burklund)

7.7.4. Facilities Committee (Blanchard-chair, Burklund, Matulka)

7.7.5. Negotiations Committee (Blanchard-chair, Gould, Lange)

7.7.6. Curriculum Committee (Gould-chair, Burklund, Lange)

7.7.7. Policy Committee (Gould-chair, Lange, Matulka)

7.8. Review Public Forum Presentation(s) - Consider, discuss, and take all necessary action

8. Old Business

9. New Business

9.1. Discuss, Consider and Take Necessary Action to Approve an early graduation request

9.2. Discuss, Consider and Take Necessary Action to Approve staff hires

9.3. Discuss, Consider and Take Necessary Action to Approve Staff Resignations

9.4. Discuss, Consider and Take Necessary Action to Approve Substitute(s)

9.5. Discuss, Consider and Take Necessary Action to approve student teachers

9.6. Discuss, Consider and Take Necessary Action to approve the purchase of a 2024 electric bus funded through a grant rebate

9.7. Discuss, Consider and Take Necessary action to approve snow removal bids

9.8. Discuss, Consider and Take Necessary Action to approve the superintendent's evaluation

10. Approval of Next Regular Board Meeting

11. Adjournment

Raymond Central Public Schools Board of Education Regular Meeting

Wednesday, October 12, 2022 at 6:00 PM Central

Raymond Central Jr-Sr High School - Mustang Room

1800 West Agnew Road

Raymond, NE 68428-9783

Present: Matt Blanchard, Brad Breitzkreutz, Cathy Burklund, Dr. Harriet Gould, Bill Lange, Derek Matulka. Also attending were: Lynn Johnson, Superintendent; Scott Shepard, Jr-Sr High School Principal; Tony Kobza, Asst Principal/Activities Director; Steve Rose, Elementary Principal; Deb Kruse, Asst Elementary Principal; and Amanda Coufal, SpEd Director.

Call to Order and Pledge of Allegiance

President Gould called the regular meeting to order at 6:00 PM and the Pledge of Allegiance was said.

Motion to Excuse Board Member's Absence

All members were present.

Open Meeting Law

The audience was reminded that Open Meeting Laws would be followed.

Presentation from John Spatz, NASB Executive Director

John Spatz, Executive Director of NASB gave a presentation on School and State Investments in Nebraska.

Consent Agenda

Motion by Matulka, second by Lange to approve the consent agenda as presented including the September 14, 2022 Budget/Tax Asking Hearing and Regular Meeting minutes; the September 23, 2022 Special Meeting minutes; the September financial statement; and monthly bills. RCV 6-0. Motion carried.

Regular Minutes and Budget/Tax Asking Hearing Minutes of September 14, 2022; and Special Meeting Minutes of September 23, 2022

Financial Statement/Report

Monthly Bills

Correspondence/Recognition

Public Forum

Tammy Sharping addressed the Board during Public Forum about keeping elementary schools in town in their current configuration, possible facility improvements and opposition to a central site.

Reports

Administrative Reports

Submitted by Scott Shepard, Jr-Sr High School Principal

Relationships - On Monday during our Professional Development time, we took a few minutes to identify every student that is connected with an adult in our building. We will use this information along with tracking activity involvement to determine which students we need to find additional ways to engage them in the RC experience. This is critical to our success as a school in fully preparing them for their futures.

Student Engagement - We are continuing to focus on student engagement in all aspects of our school day. As I mentioned last month, we want to use the 90 minute class period to engage students with other students, teachers, and curriculum. We are also trying to connect students with career options that will help them plan for the future. Tasha and I continue to meet with 9th-11th graders during Advisory to get them engaged with the Naviance program. A letter was sent to parents this week to highlight a student that had a great career experience and how parents can engage during P-T Conferences.

Community Engagement - Veterans Day Program to be held on November 11, 2022 at 9:00 AM. Please plan to attend this program that will honor our local veterans while educating our students (K-12) on the importance of respecting those that have served our country. We are working with the local American Legion Posts to invite over 350 veterans and their families. Our school families have also been encouraged to invite friends and family members that have served. Former Governor Dave Heineman will be our main speaker.

Celebrations - Fall Seasons are coming to an end. It has been great to see our students compete in the various activities. One of the highlights was the volleyball pink out game. We had a good crowd, with a full student body section, cheerleaders and pep band. I want to congratulate Asher Lahm for receiving a Letter of Commendation in the National Merit Scholarship Program. We will recognize him in front of the student body at the Homecoming Pep Rally on Friday!

Submitted by Tony Kobza, Asst Jr-Sr High School Principal/Athletic Director

Athletic Fall Season - Athletics are moving forward towards the end of the Fall Season. We have had many great successes this fall and are hoping to finish strong.

Concussion Protocol - We are in the process of getting a concussion baseline testing application called Sway that students can test from their smartphones or tablets. Sway will allow us to have better management and evaluation for athletes with possible concussions.

Drug Testing - We implemented our first round of drug testing this past week. We have a schedule developed where we will test at least three students every other week. This schedule will help us to realize testing at least 20% of the eligible students as identified in the board policy.

LED ScoreVision - The LED ScoreVision scoreboards are on track to be installed on November 1. The boards are fully funded through Business Sponsorships and family donations. This will be an exciting upgrade to our current Competitive Gym experience. I am discussing with Jared what we will do with the current scoreboards that are in the competition gym. We may move the better scoreboard to the practice gymnasium or even to Valparaiso. If we don't find it to be both beneficial and cost effective to move the scoreboards, then we will approach the board about surplus of the items.

Homecoming - Homecoming is the week of October 10.

HOMEcomings WEEK

We are so excited to be entering our Homecoming Week festivities here at Raymond Central. Below is a timeline of events for the week. We hope to see you involved in any way you can!

Thursday, October 6, and Friday, October 7

- Class Hallway Decorations during advisory

Monday, October 10 (No School)

- JV Home Football Game - 6:00PM
- Bonfire behind school - 7:30PM
- Homecoming Court Finalists will be announced at 8:00PM at the Bonfire
 - Bonfire will include FREE Hot Dogs, Chips and Water while supplies last provided by the RC Booster Club

Tuesday, October 11

- Adam Sandler Day - Dress as your favorite SCHOOL APPROPRIATE Adam Sandler Character
- NCC Volleyball Tournament - 1st Round at Ashland-Greenwood at 7:00 PM

Wednesday, October 12

- Despicable Me Day - Dress as your favorite Minion or other character

Thursday, October 13

- Anything But A Backpack - Bring your books in anything but a backpack
 - You must be able to carry your "backpack" on your own and should not interfere with the learning environment. Anything deemed unacceptable will not be allowed in the building.
- NCC Volleyball Tournament - 2nd Round at 7:00 PM - Location TBD

Friday, October 14

- Mustang Spirit Day - Show your school spirit and pride today!
- Homecoming Pep Rally - Advisory will be moved to the end of the day. Pep Rally will start at 2:45 PM.
- Homecoming Court walk through immediately following the Pep Rally on the Track.
- HOMECOMING COURT ANNOUNCED AT 6:20 PM. Crowning will be on the Track in front of the bleachers.
- Varsity Football Game vs Lincoln Christian - 7:00 PM
- Decorations for Dance following the game in the New Gym

Saturday, October 15

- NCC Volleyball Tournament Finals
- Oxbow Marching Band Competition at Ashland at 4:15 PM
- Homecoming Dance - Dance will be in New Gym and Commons will hold refreshments and photo opportunities
 - Doors Open at 8:00 PM - No one will be allowed in after 9:00 PM. If you leave, you may not return.
 - Dance Ends at 11:00 PM
 - All entrants will be subject to a breathalyzer test before entering the dance
 - All non RC Student Dates must be registered through the Main Office with Admin Approval

Submitted by Steve Rose, Elementary Principal and Deb Kruse, Assistant Elementary Principal

- Targeted Professional Development - This is structured to attend to increasing our capacity of reaching our Campus Improvement Goal of 80% Reading Proficiency.
 - **Continued...** Steve and Deb are conducting multiple walkthroughs weekly in teacher classrooms to determine district and individual teacher needs. Through those walkthroughs we have identified a need for staff instruction on the following:
 - **Continued...** Staff Meetings every 3 weeks to discuss
 - 10 Big Ideas / Checks for Understanding with 100% active participation
 - Based on Explicit Instruction: Anita L. Archer
 - 2nd Staff Development was on [Big Idea #4](#)
 - Active participation procedures are structured
 - Verbal, Written, Gestures
 - Staff is asked to determine where and when these will be used in their lessons to check for understanding. We are seeing a lot of effort to complete this and teachers are continuing to grow and ask questions about how to make this work better in their classrooms.
- [Science of Reading](#)
 - Session 3, and 4 completed during late starts and PD days with [Caryn Zietlow](#) from the ESU.
 - During these last sessions we are starting to develop the understanding of what we need to implement to bolster instruction in the areas of Word Recognition that will lead to the advancement of Reading Comprehension. We are in the process of evaluating materials that will be used to replace the outdated and non-instructionally sound Wonders Reading Program that we have used for the last several years.
 - Caryn from the ESU is aiding in the evaluation and selection of these materials with her knowledge of what we need and what other schools in this process have already chosen. We hope to have the curricular materials decided on by the first of the year.
- School News
 - Life Skills/Special Education Students attending the Sensory Safari at the Lincoln Children's Zoo - They had a great experience getting to touch and interact with the animals.
 - Teachers are beginning to meet with Student Problem Solving Teams (SPS) on a regular basis to discuss reaching students early with targeted interventions. The purpose of these meetings is to identify students who need additional support.
- Testing
 - NSCAS Growth - Fall testing has been completed and data is currently being analyzed. We have been given the Spring data to unpack. We have lower scores in regards to proficiency levels across all grades. Plans are in place to address these issues as we move forward. It will not be a quick fix, but we are looking to see immediate improvement in Active Participation per our Professional Development Plan which will directly impact student performance.
 - NWEA MAP - Being administered to 2nd Grade - the window is being finalized and we will begin looking at the district data shortly. Individual data is already being utilized to make determinations for support of students.

Submitted by Amanda Coufal, Director of Special Education
Nebraska Part B Parent Survey Results (2021-2022):

- The results from Improving Learning for Children with Disabilities (ILCD) parent survey have been released. This survey allowed parents to provide information on parent opportunities to

participate in program/school improvement activities that result in improved outcomes for students with disabilities. The Office of Special Education requires parent involvement information as part of their State Performance Plan to measure aspects of Nebraska's Special Education programs. Each year the state must provide information on an Annual Performance Report, indicating the state's progress toward meeting the targets for each of the indicators. The Nebraska Department of Education must gather information on each school district's efforts in meeting the rigorous targets and report those results publicly.

- From the results of the survey, the following are areas of concern that the school district will work on to improve:
 - Before my child was referred for special education services, the teachers and school tried different ways to help my child in the general education classroom - 68.1% agreed.
 - The school helped my child with transitions (i.e., Preschool to Kindergarten; Elementary to Middle School/Junior High; and Middle School/Junior High to High School) - 76.0% agreed.
- The following are areas of celebration:
 - I have received information about special education for my child in a language I understand - 100%.
 - I have opportunities to be involved in school activities - 98.0% agree.
 - I have received information from my school or school district about my Parent Rights - 96.6% agree.
 - As a member of the Individualized Education Program (IEP) team, I have input in decisions about the special education and related services that my child receives - 96.6% agree.

Sensory Safari:

- On October 5th, twelve special education students, ranging from Kindergarten to Seniors, had the opportunity to participate in a Sensory Safari at the Lincoln Children's Zoo. Students had the opportunity to touch, feel, hear, and smell at interpretive stations located throughout the Zoo. Nature experts and Nebraska Game and Parks engaged visitors at each station. Some of the highlights included:
 - Petting animals such as horses, goats, birds, rabbits, turtles, snakes and fish. They also had the opportunity to feel an elephant's hide.
 - Listening to devices that made frog and bird sounds. They also had the chance to do their own turkey call.
 - There was a sand pit to dig through.
 - Smell different animals and insects such as bees.
- Students then had a picnic at the Zoo after the event. A special thank you to our amazing cooks for packing a sack lunch for our students. A special thank you to our students' parents for allowing their child to participate in this fun event along with our wonderful staff: Nicole Kliment, Paige Mestl, Stacey Doan, Melani Nelson, Jody Albrecht, Michelle Gerdes, Amanda Ehlers, Matt Smith, and Leann Wiese. Everyone had a great time with great weather!

Student Board Member

Submitted by Madison Parham, Student Body President

Good evening Board Members. A lot of exciting events have occurred since the last board meeting on September 14th. On September 21st, the seniors had an Apply to College Day where they were provided with Raising Canes for lunch and learned about financial aid, scholarships, grants, and more. They were able to apply to colleges like the University of Nebraska-Lincoln, the University of Nebraska-Kearney,

and the University of Nebraska-Omaha, as well as attend a career/college fair to explore their interests in more depth. This week has been a busy, but fun week so far as we highlight Homecoming. The homecoming themes this week are Adam Sandler Day (which occurred yesterday), Minion Day (today), Anything But A Backpack Day tomorrow, and Raymond Central spirit theme on Friday. Our 2022-2023 Homecoming Queen candidates are Josie Lahm, Olyvia Korthanke, Madison Parham, Rachel Bos, Madysen Ayres, and Lizzie Potter. Our Homecoming King candidates are Isaak Fredrickson, Wyatt Svoboda, Rhet Cotter, Tyson Malousek, Mason Kreikemeier, and Colby DenHartog. Our Mr. Mustang candidates are Jace Lickliter, Danny Jackson, Wyatt Svoboda, Cameron Shultz, Jack Edwards, and Tie Hollandsworth. Royalty and Mr. Mustang will be announced before Friday's football game at 6:20 p.m. After our football players picked up two straight wins on the road these past two weeks, everyone is excited to see what they will do in Friday's football game against Lincoln Christian. The theme for the Homecoming dance this year is Glowing Galaxy and the Student Council members have worked tremendously hard to gather supplies for decorating and organizing the dance. The dance will be this Saturday, October 15th starting at 8 p.m. This will no doubt be a great opportunity for all students to get together and create a more unified environment while having fun!

Superintendent's Report

Superintendent Johnson followed up on items mentioned at the September Board Meeting. Free lighting - all three providers were contacted (BPPD, NPPD & OPPD) and they do not offer a free EnergyWise program to schools. Consolidation of printers - our current contract expires within a year and we intend to develop a new plan going forward that will eliminate several printers and attempt to standardize in a reasonable and affordable manner. Concern with fire alarm in Valparaiso - no current issues but will need to be updated if any renovation is done. Facility master planning - facilities continue to be maintained as we explore other options. As we move forward, there will be differences of opinion, however, everyone is encouraged to be respectful and not look for conflict.

NASB Monthly Update

Important Upcoming Dates:

Discuss the Superintendent Evaluation process and timeline

Facilities Report

Review of Technology Plan

Submitted by Jaxn Kobza, Technology Director
Infrastructure

- Finishing up Ruckus Virtual Smartzone project.
 - This will allow us to own our own licensing and save money with renewals for Ruckus licensing.
- Working on getting an idea of what we have in our network and creating a solid inventory.

Technology Projects

- Getting E-gold fax setup at all schools. This is cheaper and more flexible for our needs than typical analog faxing.
- Working on Building a 7 year plan for all technology rotations and system implementations.
- Looking at new websites and mass communication platforms.

Issues/Concerns

- Working on securing our network and meeting the requirements for cyber insurance.
- Still waiting for our servers to be built to start that project.

Board Committee Reports

Committee on American Civics (Breitkreutz-chair, Burklund, Matulka)

Transportation Committee (Breitkreutz-chair, Lange, Matulka)

Finance Committee (Blanchard-chair, Breitkreutz, Burklund)

Facilities Committee (Blanchard-chair, Burklund, Matulka)

Negotiations Committee (Blanchard-chair, Gould, Lange)

Curriculum Committee (Gould-chair, Burklund, Lange)

Policy Committee (Gould-chair, Lange, Matulka)

Review Public Forum Presentation(s) - Consider, discuss, and take anll necessary action

Old Business

Discuss, Consider and Take Necessary Action regarding next steps with master facility planning

BVH architect, Cleve Reeves, reviewed the four potential scenarios for facility improvement including an estimated cost of those projects. Craig Jones from First National Capital Markets spoke about possible financing and levy impact if we were to move forward with a project requiring a new bond. The next Patron Committee Meeting is scheduled for Monday, October 17 to further discuss next steps with master facility planning.

New Business

Discuss, Consider and Take Necessary Action to approve an early graduation request

Motion by Blanchard, second by Burklund to approve the early graduation request of Zavier Jurgens-Miller. RCV 6-0. Motion carried.

Discuss, Consider and Take Necessary Action to approve staff hires

Motion to approve Celia Newman as FBLA Assistant; and Dr. Harriet Gould, Hannah Evans and Miranda Otte as Volunteer Sponsors of the Future Teachers Club. RCV 6-0. Motion carried.

Discuss, Consider and Take Necessary Action to approve substitute teacher

Motion by Burklund, second by Matulka to approve Michael Sterns as substitute teacher. RCV 6-0. Motion carried.

Discuss, Consider and Take Necessary Action to approve RCEA as Exclusive Bargaining Agent for Non-Supervisory Certificated Staff

Motion by Breitreutz, second by Burklund to approve the Raymond Central Education Association as Exclusive Bargaining Agent for the District's non-supervisory certificated staff for the 2024-2025 contract year. RCV 6-0. Motion carried.

Discuss, Consider and Take Necessary Action to approve the surplus items

Motion by Matulka, second by Breitreutz to approve 23 iPads as surplus. RCV 6-0. Motion carried.

Discuss, Consider and Take Necessary Action to approve the purchase of Aptegy software for website, rapid notification, and social media coordination

Motion by Breitreutz, second by Lange to approve the purchase of Aptegy software for website, rapid notification, and social media coordination. RCV 6-0. Motion carried.

Discuss, Consider and Take Necessary Action to allow Lancaster County Sheriff's to locate a gun safe on school premises to house arms while SRO is on site

This item was tabled at this time.

Discuss, Consider and Take Necessary Action to approve the purchase of a used 2020 Thomas bus

Motion by Lange, second by Blanchard to approve the purchase of a used 2020 Thomas bus at a cost of \$88,350.00 as compared to a new bus at \$125,330.00 with almost a 2-year wait. RCV 6-0. Motion carried.

Discuss, Consider and Take Necessary Action to consider adding additional custodial support

Motion by Matulka, second by Lange to approve adding an additional custodian at the high school. RCV 6-0. Motion carried.

Approval of Patron Committee Meeting on Monday, October 17 and Next Regular Board Meeting - Wednesday, November 16, 2022

Motion by Lange, second by Matulka to approve next Patron Meeting on Monday, October 17, 2022 and Regular Board Meeting on Wednesday, November 16, 2022. RCV 6-0. Motion carried.

Adjournment

Motion by Matulka, second by Breitreutz to adjourn the meeting at 8:30 PM. RCV 6-0. Motion carried.

**RAYMOND CENTRAL PUBLIC SCHOOLS
 FINANCIAL REPORT TO THE BOARD OF EDUCATION
 POOLED CASH - BANK RECONCILIATION
 October 31, 2022**

	10/1/2022 Thru 10/31/2022	10/1/2021 Thru 10/31/2021
Bank Balance - Beginning of month	\$3,543,206.45	\$2,895,542.32
Deposits	\$330,606.44	\$395,742.08
Interest	\$2,024.21	\$251.83
Less Debits	<u>-\$830,300.89</u>	<u>-\$1,066,875.36</u>
Bank Balance - End of Month	\$3,045,536.21	\$2,224,660.87
Plus Outstanding Deposits	\$0.00	\$0.00
Less Outstanding Checks	<u>-\$146,210.45</u>	<u>-\$297,976.65</u>
Book Balance - End of month	<u>\$2,899,325.76</u>	<u>\$1,926,684.22</u>

**RAYMOND CENTRAL PUBLIC SCHOOL
FINANCIAL STATEMENT NOVEMBER 1, 2022**

GENERAL FUND

Cash Balance - October 1, 2022		\$3,361,523.38
October Receipts		\$330,606.44
October Interest Earned		<u>\$2,024.21</u>
	Total	\$3,694,154.03
October Disbursements		<u>-\$794,828.27</u>
	Cash Balance - October 31, 2022	\$2,899,325.76

LUNCH FUND

Cash Balance - October 1, 2022		\$256,202.93
October Receipts		\$27,096.30
October Interest Earned		<u>\$44.23</u>
	Total	\$283,343.46
October Disbursements		<u>-\$52,309.73</u>
	Cash Balance - October 31, 2022	\$231,033.73

BUILDING/SINKING FUND

Cash Balance - October 1, 2022		\$2,238,672.58
October Receipts		\$73,162.22
October Interest Earned		<u>\$1,398.34</u>
	Total	\$2,313,233.14
October Disbursements		<u>\$0.00</u>
	Cash Balance - October 31, 2022	\$2,313,233.14
Certificate of Deposit + Interest		<u>\$559,841.74</u>
	Combined Balance - October 31, 2022	\$2,873,074.88

HIGH SCHOOL BOND FUND

Cash Balance - October 1, 2022		\$837,451.34
October Receipts		\$78,016.03
October Interest Earned		<u>\$626.85</u>
	Total	\$916,094.22
October Disbursements		<u>\$0.00</u>
	Cash Balance - October 31, 2022	\$916,094.22

DEPRECIATION FUND

Cash Balance - October 1, 2022		\$1,303,786.98
October Receipts		\$0.00
October Interest Earned		<u>\$332.19</u>
	Total	\$1,304,119.17
October Disbursements		<u>\$0.00</u>
	Cash Balance - October 31, 2022	\$1,304,119.17
Certificate of Deposit + Interest		<u>\$628,903.49</u>
	Combined Balance - October 31, 2022	\$1,933,022.66

QUALIFIED CAPITAL PURPOSE UNDERTAKING FUND

Cash Balance - October 1, 2022		\$10,509.43
October Receipts		\$0.00
October Interest Earned		<u>\$3.01</u>
	Total	\$10,512.44
October Disbursements		<u>\$0.00</u>
	Cash Balance - October 31, 2022	\$10,512.44

EMPLOYEE BENEFIT FUND - UNEMPLOYMENT

Cash Balance - October 1, 2022		135062.48
October Receipts		\$0.00
October Interest Earned		<u>\$38.15</u>
	Total	\$135,100.63
October Disbursements		\$0.00
	Cash Balance - October 31, 2022	\$135,100.63
Certificate of Deposit + Interest		<u>\$16,140.35</u>
	Combined Balance - October 31, 2022	\$151,240.98

TAXES - 2022-2023

Requested Amount of Taxes	\$8,135,208.00	
Taxes Received	<u>\$1,165,479.80</u>	10/31/22: 14.33%
Balance	\$6,969,728.20	Received

**RAYMOND CENTRAL PUBLIC SCHOOLS
GENERAL FUND RECEIPTS AND DISBURSEMENTS - OCTOBER 2022**

OCTOBER 1, 2022 BOOK BALANCE		3,361,523.38
LANCASTER COUNTY TREASURER		
	TAXES	53,686.41
	MOTOR VEHICLE TAXES	21,002.07
	FINES & FEES	1,190.54
	PERSONAL PROPERTY TAX CREDIT	1,037.72
	MV PRO RATE	1,387.85
SAUNDERS COUNTY TREASURER		
	TAXES	99,138.08
	MOTOR VEHICLE TAXES	16,915.07
	FINES & FEES	1,548.25
	MV PRO RATE	1,049.92
SEWARD COUNTY TREASURER		
	MOTOR VEHICLE TAXES	848.44
	FINES & FEES	319.11
	MV PRO RATE	34.27
BUTLER COUNTY TREASURER		
	FINES & FEES	9.04
	MV PRO RATE	2.36
FEDERAL		
	MEDICAID	2,769.48
	MEDICAID DIRECT SERVICE	818.14
STATE OF NEBRASKA		
	STATE AID	96,348.00
PRIVATE GRANT		
	EDUCATION QUEST COLLEGE ACCESS GRANT	3,101.61
INSURANCE		
	EMC HAIL DAMAGE CLAIM	6,747.50
	EMC- PREMIUM ADJUSTMENT	2,131.00
TUITION COLLECTED		
	PRE K TUITION	1,348.68
NON REVENUE RECEIPTS		
	JURY DUTY PAY 1 DAY	35.00
JONES BANK		
	GENERAL FUND INTEREST - Sept	2,024.21
	PAYROLL ACH RETURN	143.14
RCPS HOT LUNCH FUND		
	SEPT EXPENSES	18,994.76
	TOTAL AUGUST RECEIPTS	332,630.65
	TOTAL RECEIPTS	3,694,154.03
	AUGUST DISBURSEMENTS	794,828.27
OCTOBER 1, 2022 BOOK BALANCE		2,899,325.76

OCTOBER 2022	Percent of Year Completed		16.00%			
2022-2023 RECEIPTS		M-T-D	Y-T-D	Y-T-D	Y-T-D	Y-T-D
	2022-2023	RECEIVED	RECEIVED	RECEIVED	% Received	% Received
ACCOUNT	ANTICIPATED	2022-2023	2022-2023	2021-2022	2022-2023	2021-2022
Property Taxes	\$8,135,208.00	\$152,824.49	\$1,163,858.67	\$1,237,169.20	14.31%	16.06%
Motor Vehicle Tax	\$450,000.00	\$38,765.58	\$90,378.18	\$84,013.28	20.08%	18.67%
Public Power Tax (5% Gross)	\$35,000.00	\$0.00	\$3,826.29	\$0.00	10.93%	0.00%
Carline Taxes	\$3,000.00	\$0.00	\$474.26	\$1,078.82	15.81%	35.96%
Other Tuition	\$0.00	\$0.00	\$0.00	\$0.00	0.00%	0.00%
Interest	\$3,200.00	\$2,024.21	\$3,840.64	\$511.79	120.02%	5.12%
Local License Fees	\$2,000.00	\$0.00	\$0.00	\$300.00	0.00%	25.00%
Other Local Receipts(Pre-School)	\$12,000.00	\$1,348.68	\$2,673.02	\$60.00	22.28%	1.20%
Fines & License Fees	\$30,000.00	\$3,066.94	\$5,324.26	\$4,155.78	17.75%	10.39%
ESU Receipts	\$7,000.00	\$0.00	\$3,312.96	\$0.00	0.00%	0.00%
State Aid	\$963,483.00	\$96,348.00	\$192,696.00	\$187,822.00	20.00%	20.00%
Special Education	\$490,000.00	\$0.00	\$0.00	\$0.00	0.00%	0.00%
Special Education Transportation	\$21,000.00	\$0.00	\$0.00	\$0.00	0.00%	0.00%
Homestead Exemption	\$0.00	\$0.00	\$0.00	\$0.00	0.00%	0.00%
Payments for High Ability Learners	\$6,000.00	\$0.00	\$0.00	\$0.00	0.00%	0.00%
Pro-Rate Motor Vehicles	\$18,000.00	\$2,474.40	\$2,474.40	\$2,662.42	13.75%	17.75%
State Apportionment	\$70,000.00	\$0.00	\$0.00	\$0.00	0.00%	0.00%
Relief to Property Tax Payers	\$0.00	\$0.00	\$0.00	\$0.00	0.00%	0.00%
Other State Receipts	\$23,000.00	\$0.00	\$0.00	\$0.00	0.00%	0.00%
Personal Property Tax Credit	\$0.00	\$1,037.72	\$7,941.36	\$7,644.23	0.00%	100.00%
Title I Funds	\$27,000.00	\$0.00	\$0.00	\$41,010.00	0.00%	91.13%
Title II, Part A ESSA (NCLB)	\$0.00	\$0.00	\$0.00	\$0.00	0.00%	0.00%
Other Federal Receipts	\$0.00	\$0.00	\$0.00	\$0.00	0.00%	0.00%
SPED IDEA Grant	\$123,000.00	\$0.00	\$0.00	\$0.00	0.00%	0.00%
Private Grants	\$0.00	\$3,101.61	\$3,101.61	\$2,500.00	0.00%	13.89%
Carl Perkins	\$500.00	\$0.00	\$0.00	\$325.00	0.00%	8.13%
Other Non-Revenue Receipts	\$0.00	\$178.14	\$597.41	\$6,901.31	0.00%	100.00%
Ag Land Property Credit	\$0.00	\$0.00	\$0.00	\$0.00	0.00%	0.00%
ESSER (COVID-19) Funds	\$0.00	\$0.00	\$0.00	\$0.00	0.00%	0.00%
Sale of Property	\$3,000.00	\$0.00	\$0.00	\$0.00	0.00%	0.00%
MIPS-Medicaid in Public Schools	\$9,400.00	\$3,587.62	\$3,587.62	\$0.00	0.00%	0.00%
Transfer from Other Fund/ Imprest	\$0.00	\$0.00	\$0.00	\$0.00	0.00%	0.00%
Insurance Adjustments	\$0.00	\$8,878.50	\$9,231.50	\$931.80	0.00%	100.00%
TOTAL	\$10,431,791.00	\$313,635.89	\$1,493,318.18	\$1,577,085.63	14.32%	15.81%
2021-2022 DISBUREMENTS		M-T-D	Y-T-D	Y-T-D	Y-T-D	Y-T-D
	2022-2023	DISBURSED	DISBURSED	DISBURSED	% Disbursed	% Disbursed
CATEGORY	BUDGET	2022-2023	2022-2023	2021-2022	2022-2023	2021-2022
Instructional Services	\$5,206,425.00	\$369,342.73	\$748,963.05	\$728,666.34	14.39%	15.71%
Special Education	\$1,996,647.00	\$120,470.14	\$281,063.75	\$233,434.83	14.08%	12.98%
Guidance	\$227,900.00	\$19,198.14	\$38,587.75	\$33,797.73	16.93%	16.95%
School Health Nurse	\$112,750.00	\$9,617.67	\$18,621.86	\$12,647.03	16.52%	13.68%
Safety & Security	\$52,151.00	\$336.16	\$336.16	\$24,660.16	0.64%	94.85%
Activities	\$95,020.00	\$14,051.70	\$20,158.95	\$22,499.61	21.22%	40.18%
Media, Audio Visual, Technology	\$710,125.00	\$50,495.81	\$89,245.54	\$164,916.72	12.57%	22.09%
General Administration	\$428,800.00	\$30,665.46	\$64,223.70	\$61,784.27	14.98%	13.78%
School Administration	\$762,100.00	\$51,174.57	\$108,613.04	\$121,370.02	14.25%	21.77%
Business	\$322,600.00	\$2,738.68	\$9,420.67	\$13,628.90	2.92%	19.63%
Operation of Plant	\$789,500.00	\$49,606.39	\$97,915.02	\$111,157.35	12.40%	17.25%
Maintenance of Plant	\$517,500.00	\$28,703.62	\$47,360.22	\$163,070.03	9.15%	29.72%
Pupil Transportation	\$536,549.00	\$15,613.24	\$36,690.18	\$45,551.22	6.84%	8.73%
Fed. Grants Includes Covid /ESSRS	\$129,975.00	\$9,764.28	\$20,387.75	\$70,402.25	15.69%	20.43%
Transfers	\$75,000.00	\$0.00	\$0.00	\$0.00	0.00%	0.00%
TOTAL	\$11,963,042.00	\$771,778.59	\$1,581,587.64	\$1,807,586.46	13.22%	15.69%
Cash Reserves in General Fund	\$1,939,135.00			\$0.00	0.00%	0.00%
TOTAL	\$13,902,177.00		\$1,581,587.64			

RAYMOND CENTRAL PUBLIC SCHOOLS

Student Activities Account Balances - October 2022

<u>Activity Name</u>	<u>Beginning Balance</u>	<u>Revenues</u>	<u>Expenses</u>	<u>Balance</u>
After School Club	2,387.13	0.00	0.00	2,387.13
Class of 2028 Field Trips V	326.00	0.00	0.00	326.00
Class of 2029 Field Trip Funds V	361.37	0.00	0.00	361.37
Class 2030 Field Trip Funds V	338.19	0.00	0.00	338.19
Class 2031 Field Trip Funds V	298.49	0.00	0.00	298.49
Class 2032 Field Trip Funds V	308.42	0.00	0.00	308.42
Class 2033 Field Trip Funds 2033	358.03	0.00	0.00	358.03
APEX	369.05	0.00	0.00	369.05
ART CLUB	270.48	0.00	0.00	270.48
Service Fees (Activity Acct)	1,279.02	132.70	36.46	1,375.26
Class 2022	498.33	0.00	0.00	498.33
Class 2023	370.99	0.00	0.00	370.99
Class 2024	(857.10)	0.00	0.00	(857.10)
Class 2025	91.78	0.00	0.00	91.78
Class of 2026	165.00	0.00	0.00	165.00
Class of 2027	2,028.49	0.00	0.00	2,028.49
Class 2028	2,342.84	0.00	0.00	2,342.84
Class 2029 Field Trip Funds C	241.23	0.00	0.00	241.23
Class 2030 Field Trip Funds C	348.12	0.00	0.00	348.12
Class 2031 Field Trip Funds C	487.82	0.00	0.00	487.82
Class 2032 Field Trip Funds C	328.27	0.00	0.00	328.27
Class 2033 Field Trip Funds C	318.34	0.00	0.00	318.34
Athletics	204,621.34	15,257.48	9,167.97	210,710.85
Score Vision	54,232.12	100.00	0.00	54,332.12
Boys BB	1,572.76	344.10	0.00	1,916.86
Cross Country	1,543.56	178.00	0.00	1,721.56
Baseball	810.49	0.00	0.00	810.49
Football	7,079.44	368.30	0.00	7,447.74
Girls BB	1,738.66	0.00	0.00	1,738.66
Golf Activity	1,068.91	0.00	0.00	1,068.91
Softball	7,832.09	391.77	2,429.80	5,794.06
Track	1,351.20	0.00	0.00	1,351.20
VolleyBall	6,821.29	765.84	175.87	7,411.26
Weight Room	4,000.00	0.00	0.00	4,000.00
Wrestling	3,441.25	0.00	648.57	2,792.68
Spanish Club	1,324.82	0.00	0.00	1,324.82
Life Skills	2.41	0.00	0.00	2.41
Ceresco Book Fair	25.61	970.14	0.00	995.75
Ceresco Box Tops	414.49	0.00	0.00	414.49
Ceresco Field Trips	2,994.32	0.00	0.00	2,994.32
Ceresco Playground	1,462.75	0.00	0.00	1,462.75
Ceresco Pop	36.86	7.38	0.00	44.24
Elem Fines	526.05	0.00	0.00	526.05
Elem PE	2,167.50	0.00	0.00	2,167.50
Elem Pictures	3,070.62	0.00	0.00	3,070.62
Elem Prof Development	2,028.73	0.00	0.00	2,028.73
Elem Reading Promotion	548.06	0.00	60.00	488.06
Elem Student Council	483.85	0.00	0.00	483.85
JH Boys BB	15.31	0.00	0.00	15.31
JH Football	869.19	0.00	383.08	486.11
JH Girls BB	112.68	0.00	0.00	112.68
JH Student Council	872.31	404.33	0.00	1,276.64
JH Track	515.96	0.00	0.00	515.96
JH Volleyball	1,015.38	0.00	0.00	1,015.38
JH Speech	380.35	0.00	0.00	380.35
Computer	7,581.91	0.00	0.00	7,581.91

HS Pop	37.17	84.81	0.00	121.98
HS Caring Shelves	5,156.62	0.00	205.61	4,951.01
AP Funds	34,666.73	0.00	7,305.75	27,360.98
Fines	2,220.58	0.00	0.00	2,220.58
HAL	59.66	0.00	0.00	59.66
Hot Lunch	347.63	0.00	0.00	347.63
Pre-Kindergarten	5,474.47	0.00	200.00	5,274.47
PTO	(353.31)	0.00	0.00	(353.31)
Restitution	0.00	140.00	0.00	140.00
Staff Inservice	854.92	0.00	0.00	854.92
Testing	4,437.23	108.00	0.00	4,545.23
TFK - Ceresco	347.92	0.00	0.00	347.92
TFK - Valparaiso	2,127.82	0.00	0.00	2,127.82
Val Book Fair	9,559.51	657.23	0.00	10,216.74
Val Box Tops	3,315.33	0.00	0.00	3,315.33
Val Field Trips	6,022.24	0.00	0.00	6,022.24
Val In-Service	1,815.96	0.00	0.00	1,815.96
Val Movie Night	3,310.84	0.00	0.00	3,310.84
Val Office Book Fund	953.25	0.00	0.00	953.25
Culinary Snack Cart	1,209.47	0.00	0.00	1,209.47
Val Pop	1,098.80	6.20	0.00	1,105.00
College Access Grant	685.53	3,111.61	1,134.69	2,662.45
Annual	11,168.11	520.00	1,553.21	10,134.90
Band	622.96	0.00	74.00	548.96
Band Trip	10,669.76	0.00	0.00	10,669.76
Cheerleaders	9,826.84	851.25	1,449.19	9,228.90
Choir	14,194.03	0.00	0.00	14,194.03
DI	4,614.68	0.00	0.00	4,614.68
Drama Act	2,096.27	0.00	0.00	2,096.27
Drill Team	362.17	30.00	0.00	392.17
FBLA Act	4,633.33	673.53	904.59	4,402.27
FFA Act	16,680.36	2,800.00	1,833.28	17,647.08
'Stang Gang Student Section	15.98	0.00	0.00	15.98
JR Achievements	629.57	0.00	0.00	629.57
Kindness Acct	19,420.73	0.00	0.00	19,420.73
Library	2,613.66	19.00	0.00	2,632.66
Mock Trial	380.96	0.00	0.00	380.96
National Honor Society	382.85	385.40	0.00	768.25
Rain Garden	459.50	0.00	0.00	459.50
SADD	61.17	0.00	0.00	61.17
Social Justice	194.12	0.00	0.00	194.12
Speech	8,528.12	6,434.05	0.00	14,962.17
Student Council	4,344.87	1,922.77	476.32	5,791.32
Tonettes	159.86	0.00	0.00	159.86
RC Foundation	110.62	213.87	331.48	(6.99)
Concessions	21,325.57	0.00	0.00	21,325.57
RC Concessions	8,555.54	12,051.09	12,228.28	8,378.35
Student Pop	361.07	117.60	0.00	478.67
Professional Development	21,945.12	0.00	317.26	21,627.86

RAYMOND CENTRAL PUBLIC SCHOOLS
Student Fees Account Balances - October 2022

<u>Activity Name</u>	<u>Beginning Balance</u>	<u>Receipts</u>	<u>Expenses</u>	<u>Balance</u>
Activity Pass	14,145.00	65.00	0.00	14,210.00
Service Fees (Student Fees)	145.87	17.41	18.22	145.06
Ag-Ed Labs	4,032.52	25.00	304.11	3,753.41
Art Class	16.47	25.00	0.00	41.47
Band Dry Cleaning	235.52	0.00	0.00	235.52
Band Repair/Rental	1,294.12	0.00	0.00	1,294.12
Choir Dry Cleaning	433.10	0.00	0.00	433.10
Chromebooks	15,370.55	420.00	0.00	15,790.55
Computer Science	387.96	0.00	0.00	387.96
Drama	391.64	0.00	0.00	391.64
FBLA	(212.91)	670.00	360.00	97.09
FFA	2,155.58	115.00	972.00	1,298.58
Foods Class	3,265.45	25.00	170.55	3,119.90
Mock Trial	450.01	0.00	0.00	450.01
NFL	15.00	0.00	0.00	15.00
Skills USA	2,110.95	0.00	0.00	2,110.95
Speech	250.00	25.00	0.00	275.00
Sports Fees	22,405.22	40.00	0.00	22,445.22
Tech Ed	4,446.24	60.00	2,021.70	2,484.54

RAYMOND CENTRAL PUBLIC SCHOOLS
BOARD OF EDUCATION MEETING November 16, 2022

General Fund - Report of Bills Paid Sept 2022

<u>Check Date</u>	<u>Vendor Name</u>	<u>Description</u>	<u>Amount</u>
1 10/20/2022	RCPS District #161	October Payroll	671,490.59
2 10/28/2022	ESU Coordinating Council	PowerSchool Membership 22-23	14,359.48
3 10/13/2022	Norris Public Power	Electricity HS	12,790.27
4 10/18/2022	Hamilton Equipment Company	Bobcat Attach./ Rock/Light Snow Sweeper	9,039.05
5 10/14/2022	Farmers Cooperative	Service-PropaneTank Bus Barn Propane C,V	5,471.57
6 10/28/2022	St of NE-DAS State Acctg-Central Finance	Erate Cost Recovery	5,368.22
7 10/28/2022	JourneyEd.com, Inc.	Microsoft Renewal- all sites	4,661.45
8 10/13/2022	Butler Public Power District	Electricity V	3,393.84
9 10/28/2022	RC College Access Grant	Transfer Educ Quest Deposit to CAG	3,101.61
10 10/28/2022	Omaha Public Power Dist	Electricity C	2,530.44
11 10/14/2022	CDW Government	Document Cams for Val and Projectors	2,195.71
12 10/14/2022	Kidwell	Install Door/Push Button Entry Supt Off	2,133.82
13 10/14/2022	Lou's Sporting Goods	Footballs, Helmets	1,767.15
14 10/14/2022	Lou's Sporting Goods	JrHS Football Supplies, SB Pitching Mach	1,676.98
15 10/14/2022	Crane Sales/Service	Replace 4 Batteries	1,551.90
16 10/14/2022	CDW Government	Laptops for Teachers (2)	1,282.00
17 10/14/2022	Brooke L. Cheleen	Sept. 2022 SPED Physical Therapy	1,263.72
18 10/13/2022	Waste Connections Co	Aug/Sept Garbage HS, V	1,156.75
19 10/18/2022	Wahoo-Wav.-Ashl. News	Publications	1,152.92
20 10/13/2022	Nebraska Dept Of Revenue	Motor Fuel Tax	893.00
21 10/14/2022	Hydro Optimization & Automation Sol	Well Pump Repairs HS	798.00
22 10/14/2022	CDW Government	Ceresco Comp. Lab Chromebooks(4)	759.96
23 10/14/2022	Liberty Lawn & Landscape	Lawn Txt- Week Spray HS	748.00
24 10/17/2022	Nebraska Sports	JrHS & HS FB Supplies	745.97
25 10/28/2022	Green's Furnace & Plumbing Co. Inc.	Heat Pump Service Calls - C	743.24
26 10/13/2022	Scott Tvrdy	Sept. Mowing C, V	720.00
27 10/17/2022	Pioneer Manufacturing Company	Paint - Ground Supplies FB Field. HS	677.00
28 10/18/2022	MCS	Custodial Supplies, all Locations	657.15
29 10/24/2022	US Bank	Hardware /Hinges for lockers - C	647.10
30 10/14/2022	Eakes Office Solutions	Custodial Supplies HS	597.71
31 10/28/2022	Johnstone Supply	Building Maint Supplies C	592.86
32 10/28/2022	D B Nebraska Service Company	Heat Pump Repair C	562.50
33 10/13/2022	Doty, Marita	SLP Services at NA Martyrs Sept 2022	522.50
34 10/14/2022	Johnson Hardware Co.	Maint. Supplies HS	497.17
35 10/18/2022	Village Of Ceresco	Utilities C	472.14
36 10/17/2022	Nelson Gas & Oil Co.	Oil, DEF	468.40
37 10/24/2022	US Bank	Tech Ed Equip. Jointer cutter head	456.99
38 10/17/2022	Windstream	Phone HS	453.49
39 10/24/2022	US Bank	Kind. Supplies C	433.65
40 10/14/2022	Douglas Bush	Marching band drill.	400.00
41 10/24/2022	US Bank	Principals' Prof. Dev C,V,HS	399.96
42 10/24/2022	US Bank	SPED Classroom Supplies	399.16
43 10/13/2022	Steve Rose	Reimbursement Mileage	385.63
44 10/24/2022	US Bank	Rooms for NSCTA Convention- Speech	384.00
45 10/13/2022	BrightArrow Technologies Inc.	3 month renewal Phone/email support	377.55
46 10/14/2022	Bishop Business	Printer Toner/ Semi Gloss Paper HS	377.36
47 10/17/2022	National Time & Signal	Wall Clocks C	375.19
48 10/13/2022	Windstream	Faxes Supt , C , V	374.73
49 10/13/2022	Nelson, Ritch	Sept Activity Work	352.50
50 10/14/2022	Lancaster County Sheriff's Office	SRO Piitz & Paige FB Games	336.16
51 10/14/2022	Computer Hardware	IPad - SPED	329.95
52 10/13/2022	Village Of Valparaiso	Utilities V	309.62
53 10/14/2022	Educational Service Unit #2	LETRS Reading Training C,V,HS	300.00
54 10/24/2022	US Bank	HS Prof. Develop. Veteran's Day Invites	293.96
55 10/24/2022	US Bank	Chemistry Lab Burners	284.87
56 10/24/2022	US Bank	STEM supplies HS	283.26
57 10/24/2022	US Bank	F&CS Classroom Student Supplies	262.21
58 10/13/2022	Coufal, Amanda	Sept Mileage Reimbursement	249.38
59 10/24/2022	US Bank	Building Maint Supplies/Tools	248.88

60	10/17/2022	Perry Guthery Haase & Gessford P.C.	Legal Services	241.49
61	10/24/2022	US Bank	RN Prof. Development	235.00
62	10/28/2022	Varsity Spirit Fashion Attn: AR	Dance Team Supplies	233.50
63	10/24/2022	US Bank	Colored Pencils HS Art Supplies	231.98
64	10/14/2022	Wahoo Public Schools	Entry fee for Cross Country Meet @ Wahoo	230.00
65	10/28/2022	Intermedia.net, INC	Phone Service	215.66
66	10/17/2022	William V. MacGill & Co	Med kit supplies for coaching/trainers	212.01
67	10/14/2022	Menards Lincoln	Maint/Custodial Supplies HS, C	208.22
68	10/13/2022	Trenhaile, Clair	Sept. Mileage Reimbursement	205.13
69	10/13/2022	Weyers, Rick	Activity worker Sept	202.50
70	10/14/2022	Educational Service Unit #2	New Teacher Academy EH, AR	200.00
71	10/28/2022	SHAPE America	Registration for the SHAPE Conference	200.00
72	10/24/2022	US Bank	Hitch/Trailer Security Lock Boxes	199.94
73	10/14/2022	J.W. Pepper	Band and Choir Sheet Music	199.75
74	10/17/2022	Nebraska Association of School Boards	Reg Fee Facilities/Construction BB&LJ	190.00
75	10/24/2022	US Bank	Supt. Office supplies	185.51
76	10/18/2022	Jackson Services Inc.	Mats/Mops	181.38
77	10/17/2022	RCPS Volleyball	Sept. Activity Work	180.00
78	10/17/2022	RCPS Volleyball	Sept. Activity Work	180.00
79	10/13/2022	Oak Valley Lumber Co	Building Maint Supplies	177.19
80	10/13/2022	Crees, Jennifer	Mileage Reimbursement Health Tech	173.75
81	10/24/2022	US Bank	Headphones for class/sticker prizes	169.88
82	10/14/2022	Menards Lincoln	books, and materials Tech Ed	167.34
83	10/14/2022	Home Depot Pro	Custodial /Maintenc. Supplies	165.74
84	10/24/2022	US Bank	Classroom Supplies SPED C,V	159.49
85	10/24/2022	US Bank	SPED Classroom Supplies C, V	158.07
86	10/14/2022	Nebraska Sports	Kicking Screen FB	150.47
87	10/14/2022	Bennington High School	Entry fee for XC meet at Bennington	150.00
88	10/13/2022	Kobza, Jaxn	Sept Mileage Reimb. Tech Director	150.00
89	10/18/2022	SFM	Workers Compensation Invoice	150.00
90	10/24/2022	US Bank	Monitor Stand HS	141.99
91	10/13/2022	Steve Rose	Reimb General Ed Supplies Elem	129.41
92	10/14/2022	Aqua Systems	Repair Water System HS	129.00
93	10/24/2022	US Bank	Psych Eval. Materials	123.01
94	10/14/2022	Beatrice High School	Cross Country Entry Fee	120.00
95	10/24/2022	US Bank	Projector Lamps	117.98
96	10/24/2022	US Bank	Interior Design/Textiles Class Supplies	109.84
97	10/24/2022	US Bank	7 Background checks	108.50
98	10/24/2022	US Bank	Culinary/Foods Groceries and Sewing Supp	105.67
99	10/17/2022	RC Jr HS Student Council	Sept. Activity Work	105.00
100	10/17/2022	RC National Honor Society	Sept. Activity Work	105.00
101	10/13/2022	Shepard, Taylor	Sept. Activity Work	105.00
102	10/13/2022	Ralston High School	Quiz Bowl Entry Fee	100.00
103	10/24/2022	US Bank	Online Payment for PTC Scheduler	100.00
104	10/24/2022	US Bank	Cyber Security Conference JK	99.00
105	10/18/2022	School Specialty	Supplies SPED V	97.39
106	10/13/2022	Company Care	DOT Follow Up/Drug Test	94.00
107	10/18/2022	Dietze Music	Band Supplies HS	92.10
108	10/24/2022	US Bank	Ethernet cable and monitor cables.	90.89
109	10/24/2022	US Bank	Spanish classroom supplies.	88.29
110	10/24/2022	US Bank	Spch Path Supplies	86.98
111	10/24/2022	US Bank	supplies for veteran's day program	85.96
112	10/14/2022	East Butler Public School	Entry Fee for East Butler X Country Meet	75.00
113	10/28/2022	Woods, Carrie	Reimb.- CDL Permits	75.00
114	10/24/2022	US Bank	HS Counc. Office Supplies	68.93
115	10/28/2022	Demco	Reading Room Supplies V	67.41
116	10/24/2022	US Bank	Classroom Supplies F&CS	66.30
117	10/14/2022	Matheson Tri-Gas Inc.	Welding Tank Rental	65.56
118	10/14/2022	KSB School Law PC LLO	Legal Service	65.00
119	10/24/2022	US Bank	Kind Supplies C	59.71
120	10/13/2022	Amanda Ehlers	Sept Mileage Reimbursement	57.88
121	10/13/2022	Teacher Created Resources	Classroom Supplies Reading Rm V	55.93
122	10/24/2022	US Bank	Sheet Music - HS Choir	51.70
123	10/13/2022	ASI	Payflex Admin Fees	50.00
124	10/17/2022	NMLEA	Prof Dev AK 6th	50.00
125	10/24/2022	US Bank	AD Office Supplies	49.93

126	10/24/2022	US Bank	Stem Supplies JR/SR HS	49.50
127	10/14/2022	Lou`s Sporting Goods	CC Supplies	43.38
128	10/24/2022	US Bank	HS Office Supplies	42.18
129	10/28/2022	WalMart Capital One	F&CS Classroom Supplies	39.35
130	10/13/2022	Tvrdy`s One Stop	Antifreeze	36.90
131	10/18/2022	National Academic Quiz Tournaments LLC	Tournament Practice Q's- Quiz Bowl	31.00
132	10/24/2022	US Bank	Art Supplies HS	29.99
133	10/28/2022	Home Depot Pro	Maint.Supplies HS	27.04
134	10/24/2022	US Bank	Classroom Supplies SPED C	23.63
135	10/28/2022	Brad Breitkreutz	Reimb. BOE Mtg Kearney, Meals	21.65
136	10/17/2022	NWF	Zoobook Subscription Renewal C Library	21.35
137	10/24/2022	US Bank	HS Art Supplies	16.00
138	10/17/2022	Omaha World-Herald	Publications	10.00
139	10/18/2022	School Specialty	Classroom Supplies V 5th	7.92
140	10/18/2022	School Specialty	Classroom Supplies V 5th	7.92
141	10/24/2022	US Bank	Parking Fee Mtg/Supt	7.50
142	10/18/2022	Seward County Clerk	LB644 Postcard Reimbursement	4.52
143	10/07/2022	RevTrak	Rev Trak Fees	4.34

Hot Lunch Fund - Report of Bills Paid August 2022

1	10/18/2022	Cash-Wa Distributing	Food	19,807.67
2	10/20/2022	RCPS District #161	October Hot Lunch Payroll	18,994.76
3	10/18/2022	Sysco Lincoln	Food	6,801.48
4	10/18/2022	Hiland Dairy	Milk	3,774.23
5	10/18/2022	Kelly's Produce	Fresh Produce	1,470.50
6	10/17/2022	Sentry Electric Inc.	Kitchen Exhaust Circuits HS	1,140.14
7	10/24/2022	US Bank	HL Food	535.24
8	10/18/2022	US Foods Inc.	Food	420.90
9	10/07/2022	RevTrak	RevTrak Fees	364.67
10	10/18/2022	Jackson Services Inc.	Kitchen Linens	120.93
11	10/27/2022	Sabata, Clarice	Reimb Hot Lunch Food Purchase	47.52

RAYMOND CENTRAL PUBLIC SCHOOLS
Student Activities Checks - October 2022

<u>Activity Name</u>	<u>Date</u>	<u>Vendor</u>	<u>Description</u>	<u>Amount</u>
Service Fees-Activity Acct	10/07/2022	RevTrak	Service Fees (Activity Acct)	36.46
Athletics	10/10/2022	Foote, Jeremy	10/10 JV FB Official	60.00
Athletics	10/10/2022	Wiles, Brian	10/10 JV FB Official	60.00
Athletics	10/10/2022	Lanham, Todd	10/10 JV FB Official	60.00
Athletics	10/11/2022	Schulte, Vern	10/11 JH FB Official	90.00
Athletics	10/11/2022	Burmood, Adam	10/11 JH FB Official	90.00
Athletics	10/11/2022	Wiles, Brian	10/11 JH FB Official	90.00
Athletics	10/11/2022	Woita, Andrea	D team game from 10/3	35.00
Athletics	10/11/2022	Kobza, Anthony	Reimb.-Hospitality Room Supplies	152.28
Athletics	10/11/2022	Pippitt, Kylie	D team game from 10/3	35.00
Athletics	10/13/2022	Hickson, Mark	10/14 Varsity FB Official	120.00
Athletics	10/13/2022	Super C	Hospitality Room Supplies 10/1vb	28.56
Athletics	10/13/2022	Ohler, Scott	10/14 Varsity FB Official	120.00
Athletics	10/13/2022	Pappas, Jeff	10/14 Varsity FB Official	120.00
Athletics	10/13/2022	Bokowski, Jason	10/14 Varsity FB Official	120.00
Athletics	10/13/2022	Fagler, Joe	10/14 Varsity FB Official	120.00
Athletics	10/13/2022	Dolnicek, Terry	NCC VB Official 10/13	100.00
Athletics	10/13/2022	Dolnicek, Terry	Mileage	10.00
Athletics	10/13/2022	Shepard, Kathy	NCC VB Official 10/13	100.00
Athletics	10/13/2022	Shepard, Kathy	Mileage	10.00
Athletics	10/14/2022	VABA	Field Prep for Softball games	200.00
Athletics	10/14/2022	Lou's Sporting Goods	Softball	125.36
Athletics	10/14/2022	Lou's Sporting Goods	Athletics	164.00
Athletics	10/14/2022	Lou's Sporting Goods	Athletics	51.42
Athletics	10/14/2022	Lou's Sporting Goods	Athletics	1,244.70
Athletics	10/17/2022	rSchool Today (DWC)	Scheduling Software Renewal	900.00
Athletics	10/18/2022	Sway Medical	Athletics/Concussion baseline Testing	897.50
Athletics	10/18/2022	Nanonation, Inc.	Digital Trophy Case: Annual Support	300.00
Athletics	10/20/2022	Mar, Ken	10/21 Varsity FB Official	120.00
Athletics	10/20/2022	Mar, Jack	10/21 Varsity FB Official	120.00
Athletics	10/20/2022	Miller, Tom	10/21 Varsity FB Official	120.00
Athletics	10/20/2022	Christiansen, Nick	10/21 Varsity FB Official	120.00
Athletics	10/20/2022	Fleeces, Andrew	10/21 Varsity FB Official	120.00
Athletics	10/23/2022	US Bank	Athletics	215.94
Athletics	10/23/2022	US Bank	Athletics	269.94
Athletics	10/23/2022	US Bank	Game Ball Stands for storage	19.98
Athletics	10/23/2022	US Bank	Hospitality Room Supplies vb invite	153.88
Athletics	10/23/2022	US Bank	Athletics	10.54
Athletics	10/28/2022	Awards Unlimited Inc	Athletics Awards	1,387.96
Athletics	10/28/2022	Awards Unlimited Inc	Athletics Awards	1,105.91
Softball	10/14/2022	Lou's Sporting Goods	Softball	2,363.80
Softball	10/14/2022	Lou's Sporting Goods	Softball	66.00
VolleyBall	10/13/2022	Mead Public Schools	Vball Tournament	50.00
VolleyBall	10/28/2022	Baker, Allison	Reimb.VB Supplies	96.37
VolleyBall	10/28/2022	Lapin, Jeff	Reimb.VB Supplies	29.50
Wrestling	10/14/2022	Lou's Sporting Goods	Coaches shirts	373.57
Wrestling	10/18/2022	NE Wrestling Camps, Inc	Rules mtg/clinic	275.00
Elem Reading Promotion	10/14/2022	Grafton&Associates -Education Rising	Elem Reading Promotion	60.00
JH Football	10/18/2022	RC Concessions	JH football end of year party	30.00
JH Football	10/17/2022	Super C	Pizza for jh football	153.00
JH Football	10/23/2022	US Bank	RC Concession Supplies	200.08
HS Caring Shelves	10/18/2022	Tasha Osten	Perishable grocery items	71.86
HS Caring Shelves	10/20/2022	Tasha Osten	Winter coats, gloves hats for Students	133.75
AP Funds	10/22/2022	US Bank	Adv. Math Texts	7,305.75
College Access Grant	10/11/2022	Cash	UNL Showcase Senior Visit	55.00
College Access Grant	10/22/2022	US Bank	SCC Beatrice Tour 11th Grade meals	333.50
College Access Grant	10/22/2022	US Bank	College Access Grant	746.19
Annual	10/23/2022	US Bank	Camera, memory cards	328.26
Annual	10/23/2022	US Bank	Annual Supplies	1,224.95
Band	10/28/2022	Awards Unlimited Inc	Band Awards	54.00
Band	10/28/2022	Nebraska State Bandmasters Assoc.	Fee-8th Grade All-State auditions	20.00
Cheerleaders	10/14/2022	5678 Solutions	Competition props	395.00
Cheerleaders	10/18/2022	Heartland Championships	Competition fee	590.00

Cheerleaders	10/20/2022	Deidel, Shay	Reimb.Party City Signs/Cheer Supplies	114.19
Cheerleaders	10/20/2022	Nebraska Coaches Association	State registration	350.00
FBLA Act	10/14/2022	Awards Unlimited Inc	FBLA Act	363.25
FBLA Act	10/22/2022	US Bank	Thank you Cards	10.97
FBLA Act	10/22/2022	US Bank	FBLA Meeting Supplies	125.13
FBLA Act	10/28/2022	Schaffer, Keely	FBLA Meeting Supplies	405.24
FFA Act	10/14/2022	National FFA Organization	Registration costs	810.00
FFA Act	10/14/2022	Indianapolis Motor Speedway Museum	Tours - FFA Nationals	180.00
FFA Act	10/14/2022	Beasley's Orchard, LLC	Tours - FFA Nationals	108.00
FFA Act	10/14/2022	Ozark Fisheries	Tours - FFA Nationals	125.00
FFA Act	10/18/2022	Hailee, Nelson	Pumpkins	160.00
FFA Act	10/22/2022	US Bank	Parking Pass FFA Nationals	55.00
FFA Act	10/22/2022	US Bank	Game Show Battle Room FFA National	336.57
FFA Act	10/23/2022	US Bank	FFA Meeting Supplies	37.96
FFA Act	10/23/2022	US Bank	FFA Meeting Supplies	20.75
Student Council	10/14/2022	Complete Weddings and Events	Homecoming DJ	225.00
Student Council	10/18/2022	Munford, Brooke	Reimb.Homecoming Flowers	70.00
Student Council	10/18/2022	BOS, Linda	Gift cards for HC Royalty	40.00
Student Council	10/23/2022	US Bank	Hoco crowns	101.32
RC Foundation	10/22/2022	US Bank	Teacher Wish List - Reimb. By RCEF	179.34
RC Foundation	10/23/2022	US Bank	Teacher Wish List - Reimb. By RCEF	82.62
RC Foundation	10/23/2022	US Bank	Teacher Wish List - Reimb. By RCEF	34.99
RC Foundation	10/23/2022	US Bank	Teacher Wish List - Reimb. By RCEF	34.53
RC Concessions	10/13/2022	Sysco Lincoln	Concessions restock	322.92
RC Concessions	10/13/2022	Del Gould Meat Co., Inc	RC Conc.: hot dogs restock	264.00
RC Concessions	10/13/2022	Super C	RC conc. pizza for 9/29 conc.	68.00
RC Concessions	10/14/2022	VABA	payment for 3 gallons of popcorn oil	65.07
RC Concessions	10/17/2022	Raymond Central High School Football	profit from 10/10 football conc.	129.00
RC Concessions	10/17/2022	RC Athletics	profit from 10/10 football conc.	86.00
RC Concessions	10/17/2022	RC Athletics	profit from 10/6 jhvb conc.	135.99
RC Concessions	10/17/2022	RC Athletics	conc. profit 10/1 vb, 10/3 vb&fb	404.64
RC Concessions	10/17/2022	RC Athletics	rc conc. Pizza for 10/4 vb	288.22
RC Concessions	10/17/2022	RCPS FBLA	profit from 10/6 jhvb conc.	203.99
RC Concessions	10/17/2022	RC National Honor Society	profit from 10/1 vb conc.	280.40
RC Concessions	10/17/2022	Jr High Student Council	profit from 10/4 vb conc.	279.33
RC Concessions	10/18/2022	RC Softball	Conc. profit from 10/13 ncc VB	106.37
RC Concessions	10/18/2022	RCPS Speech	Conc profit from 10/14 VFB	843.80
RC Concessions	10/18/2022	RC Athletics	Conc. profit 10/13 and 10/14	633.44
RC Concessions	10/18/2022	RC Athletics	profit from 9/26, 9/27, 9/29 conc.	365.96
RC Concessions	10/18/2022	RCPS FBLA	profit from 9/27 conc.	198.54
RC Concessions	10/18/2022	RCPS Boys BB	profit from 9/29 conc.	194.10
RC Concessions	10/17/2022	Pepsi Cola Of Lincoln	pop/water for concessions	1,718.30
RC Concessions	10/17/2022	RC Booster Club	profit from 10/3 jhvb and jvfb conc.	326.55
RC Concessions	10/17/2022	RC Post Prom	profit from 10/4 jhfb conc.	153.00
RC Concessions	10/17/2022	Super C	Pizza Concessions	816.00
RC Concessions	10/18/2022	Sysco Lincoln	popcorn for concessions	50.88
RC Concessions	10/18/2022	Del Gould Meat Co., Inc	RC Conc. hot dogs	132.00
RC Concessions	10/18/2022	Del Gould Meat Co., Inc	rc conc. hamburgers	71.80
RC Concessions	10/22/2022	US Bank	RC Concession Supplies	69.40
RC Concessions	10/22/2022	US Bank	Storage cabinet for concessions	263.73
RC Concessions	10/22/2022	US Bank	RC Conc. chip holder	29.52
RC Concessions	10/22/2022	US Bank	Storage cabinet for concessions	738.48
RC Concessions	10/23/2022	US Bank	RC Concession Supplies	153.12
RC Concessions	10/23/2022	US Bank	RC Concession Supplies	1,922.83
RC Concessions	10/23/2022	US Bank	RC Concessions	456.80
RC Concessions	10/23/2022	US Bank	RC Conc. restock	362.42
RC Concessions	10/23/2022	US Bank	RC Conc. restock	30.68
Professional Dev.	10/22/2022	US Bank	Prof. Development Supplies	98.82
Professional Dev.	10/22/2022	US Bank	Prof. Development Supplies	34.98
Professional Dev.	10/23/2022	US Bank	Prof. Development Supplies	148.48
Professional Dev.	10/23/2022	US Bank	Prof. Development Supplies	34.98
Pre-Kindergarten	10/07/2022	Martin's Hillside Orchard	Field Trip Fee K-V	200.00

RAYMOND CENTRAL PUBLIC SCHOOLS
Student Fees Checks - October 2022

<u>Activity Name</u>	<u>Date</u>	<u>Vendor</u>	<u>Description</u>	<u>Amount</u>
Ag-Ed Labs/Student Fees	10/14/2022	Matheson Tri-Gas Inc.	Welding Supplies	279.12
Tech Ed/Student Fees	10/14/2022	Menards Lincoln	Student Materials	739.49
FFA/Student Fees	10/17/2022	NE FFA Assoc.	Dues	972.00
Ag-Ed Labs/Student Fees	10/22/2022	US Bank	Safety Glasses	24.99
Tech Ed/Student Fees	10/23/2022	US Bank	Blades and Student Supplies	1,282.21
Foods Class/Student Fees	10/23/2022	US Bank	Foods Groceries	76.75
Foods Class/Student Fees	10/23/2022	US Bank	Groceries Foods/Culinary	93.80
FBLA/Student Fees	10/28/2022	FBLA-Phi Beta Lambda, Inc	FBLA HS Dues	170.00
FBLA/Student Fees	10/28/2022	FBLA-Phi Beta Lambda, Inc	FBLA ML Dues	190.00
Service Fees (Student Fees)	10/07/2022	RevTrak	Service Fees (Student Fees)	18.22



**RAYMOND
CENTRAL
MUSTANGS**

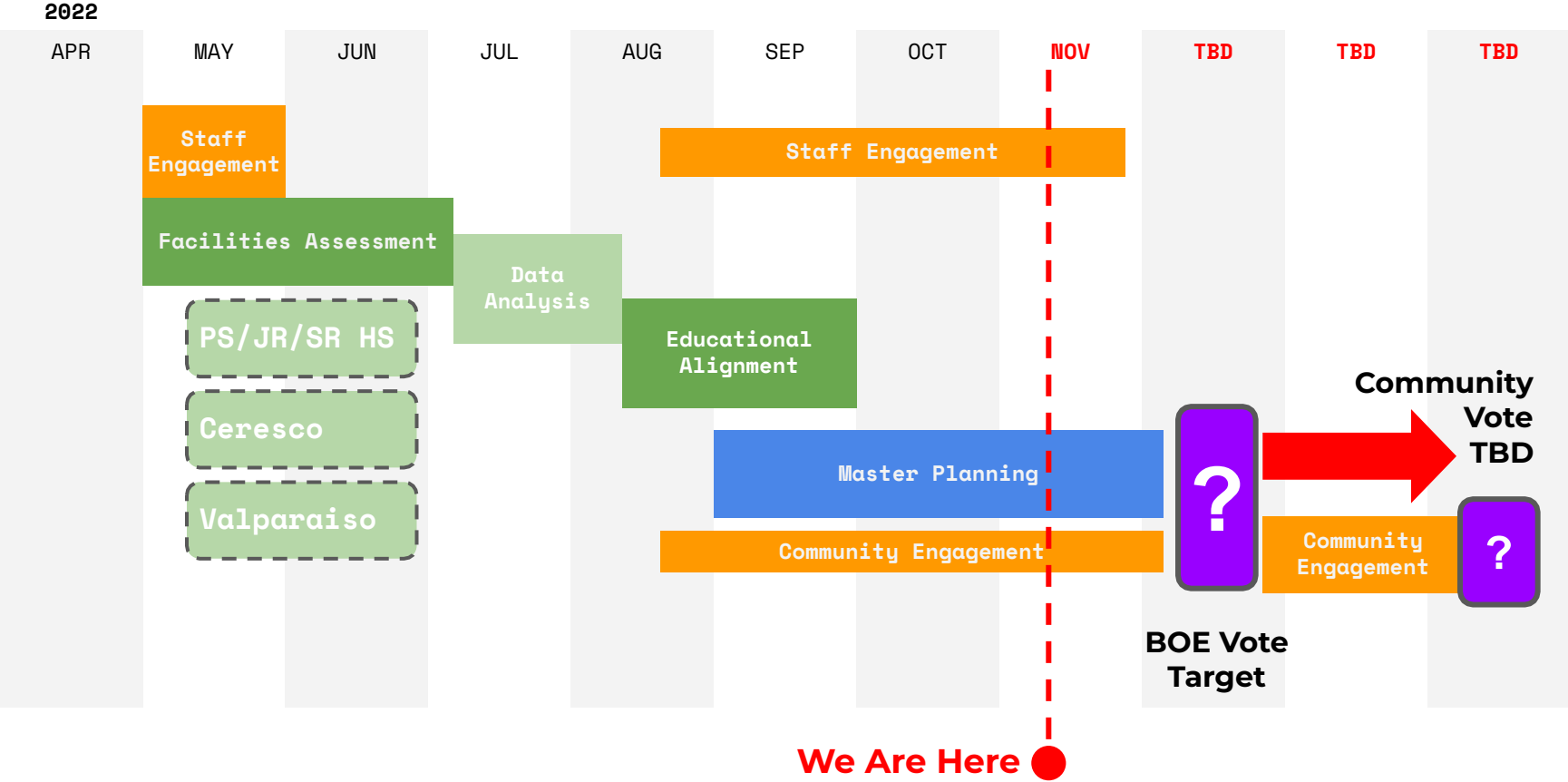
BVH
ARCHITECTURE

**BOARD OF EDUCATION MEETING
11/16/2022**

Agenda

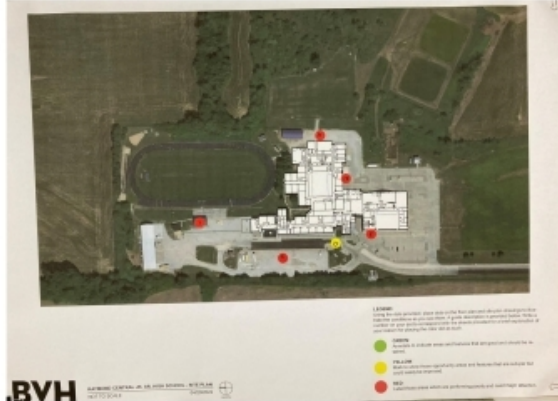
- **Past Information Review**
- **Review Community Meeting Results**
- **Review Admin Work Session Results**
- **Discuss Next Steps**

Master Planning Timeline



PAST INFO REVIEW

Jr. - Sr. High



Raymond Central Public Schools - Jr-Sr High School					
Building Condition Report Card - Single Level Structure					
Date: 6.14.2022		Building Name: Jr-Sr High School		Area: GSF - 117,950	
Prepared by: RS/AM		Site Area: Approx. 107 acres		Floors: One	
		Date Constructed: 1968 - 2016		Building Category: High School	
System	Subsystem			System	
Subsystem	Value	Grade	Score	Value	Score
Site			77.30	9.0%	6.96
Improvements	5.0%	85	4.25		
Earthwork	44.0%	70	30.80		
Utilities	11.0%	75	8.25		
Paving	40.0%	85	34.00		
Structure			94.42	17.0%	16.05
Foundations	18.0%	100	18.00		
Soil Foundations	0.0%		0.00		
Below-grade Walls	0.0%		0.00		
Slab-on-grade	16.0%	92	14.72		
Structure Frame / Walls	45.0%	92	41.40		
Elevated Floor Structure	7.0%	100	7.00		
Roof Structure	14.0%	95	13.30		
Exterior Enclosure			81.01	16.0%	12.96
Walls	45.0%	92	41.40		
Windows	13.0%	55	7.15		
Doors/ Storefront	12.0%	83	9.96		
Roofing	30.0%	75	22.50		
Interior Construction			79.78	18.0%	14.36
Partitions	36.0%	88	30.80		
Doors	10.0%	75	7.50		
Fittings / Millwork	16.0%	70	11.20		
Stairs	1.0%	88	0.88		
Wall Finishes	12.0%	85	10.20		
Floor Finishes	16.0%	70	11.20		
Ceiling Finishes	10.0%	80	8.00		
Conveying Systems			10.00	1.0%	0.10
Elevator	100.0%	10	10.00		
Mechanical			78.50	24.0%	18.84
HVAC	55.0%	80	44.00		
Temperature Controls	10.0%	75	7.50		
Plumbing	30.0%	90	27.00		
Fire Protection	5.0%	95			
Electrical			58.28	12.0%	6.99
Lighting & Controls	36.0%	75	26.25		
Service & Distribution	35.0%	70	24.50		
Fire Alarm	10.0%	75	7.50		
IT Systems	10.0%	70	0.01		
Security/Access Control	10.0%	0			
Accessibility			77.60	1.5%	1.16
Parking & Exterior Route	20.0%	88	17.60		
Interior Route	20.0%	90	10.00		
Doors & Hardware	20.0%	100	20.00		
Restrooms, Lockers & Showers	20.0%	100	20.00		
Special Systems	20.0%	90	10.00		
Code Compliance			77.50	1.5%	1.16
Exiting & Exit Pathway	25.0%	100	25.00		
Vertical Separations	25.0%	80	20.00		
Area Separations	25.0%	80	20.00		
Special Systems	25.0%	90	12.50		
Building Grade					78.59

Building Upgrades Needed:

- Exterior Wall Repairs
- Drainage Improvements
- Window Replacement
- Roof (partial)
- Finishes Worn / Dated
- Elevator
- Doors / Hardware (partial)
- Kitchen Exhaust
- Kitchen Equipment (partial)
- Mechanical System (partial)
- Lighting and Controls
- Electrical Panels (original)
- Alarm System
- Access Control
- Clock System
- AV and IT Infrastructure

Ceresco Elem.



Raymond Central Schools - Ceresco Elementary					
Building Condition Report Card - Single Level Structure					
Date: 6.16.2022		Building Name: Ceresco		GSF - 31,790	
Prepared by: RS/AM		Area: Approx. 4 acres		Site Area: One	
		Floors: 2000		Date Constructed: Elementary	
System	Subsystem			System	
Subsystem	Value	Grade	Score	Value	Score
Site			69.70	9.0%	6.27
Improvements	5.0%	75	3.75		
Earthwork	44.0%	70	30.80		
Utilities	11.0%	65	7.15		
Paving	40.0%	70	28.00		
Structure			92.79	17.0%	15.77
Foundations	19.0%	100	19.00		
Soil Foundations	0.0%	0	0.00		
Below-grade Walls	0.0%	0	0.00		
Slab-on-grade	17.0%	87	14.79		
Structural Frame / Walls	46.0%	95	43.70		
Elevated Floor Structure	0.0%	0	0.00		
Roof Structure	18.0%	85	15.30		
Exterior Enclosure			60.20	18.0%	9.63
Walls	45.0%	92	41.40		
Windows	13.0%	20	2.60		
Doors/ Storefront	12.0%	85	10.20		
Roofing	30.0%	20	6.00		
Interior Construction			71.45	19.0%	13.58
Partitions	35.0%	85	29.75		
Doors	10.0%	85	8.50		
Fittings / Millwork	17.0%	60	8.50		
Stairs	0.0%	0	0.00		
Wall Finishes	12.0%	85	10.20		
Floor Finishes	16.0%	50	8.00		
Ceiling Finishes	10.0%	65	6.50		
Conveying Systems			0.00	0.0%	0.00
Elevator	0.0%	0	0.00		
Mechanical			67.75	24.0%	16.26
HVAC	55.0%	75	41.25		
Temperature Controls	10.0%	85	8.50		
Pumfing	30.0%	60	18.00		
Fire Protection	5.0%	90	4.50		
Electrical			65.26	12.0%	7.83
Lighting & Controls	35.0%	80	28.00		
Service & Distribution	35.0%	85	29.75		
Fire Alarm	10.0%	75	7.50		
IT Systems	10.0%	60	6.00		
Security/Access Control	10.0%	25	2.50		
Accessibility			97.00	1.5%	1.46
Parking & Exterior Route	20.0%	85	17.00		
Interior Route	20.0%	100	20.00		
Doors & Hardware	20.0%	100	20.00		
Restrooms, Lockers & Showers	20.0%	100	20.00		
Special Systems	20.0%	100	20.00		
Code Compliance			90.00	1.5%	1.35
Exit & Exit Pathway	25.0%	90	22.50		
Vertical Separations	25.0%	90	22.50		
Area Separations	25.0%	90	22.50		
Special Systems	25.0%	90	22.50		
Building Grade					72.15

Building Upgrades Needed:

- Roof
- Attic Ventilation
- Attic Walkways
- Lockers
- Finishes Worn / Dated
- Kitchen Exhaust
- Kitchen Equipment (partial)
- Drainage Improvements
- Window Replacement
- Plumbing
- HVAC System (partial)
- Lighting and Controls
- Access Control
- AV and IT Infrastructure
- Clock System
- Playground Surface and Accessibility

Valparaiso Elem.

Raymond Central Public Schools - Valparaiso Elementary

Building Condition Report Card - Single Level Structure

Date: 6.16.2022
Prepared by: RS/am

Building Name: Valparaiso
Area: GSF - 37,295
Site Area: Approx. 4 acres
Floors: Two
Date Constructed: 1920 - 2000
Building Category: Elementary

System	Subsystem			System		
	Value	Grade	Score	Value	Grade	Score
Site				74.15	9.0%	6.67
Improvements	5.0%	75	3.75			
Earthwork	44.0%	70	30.80			
Utilities	11.0%	80	8.80			
Paving	40.0%	77	30.80			
Structure			86.50	17.0%	14.71	
Foundations	18.0%	95	17.10			
Basement Foundations	0.0%		0.00			
Below-grade Walls	0.0%		0.00			
Slab-on-grade	16.0%	95	15.20			
Structural Frame / Walls	40.0%	90	36.00			
Elevated Floor Structure	7.0%	70	4.90			
Roof Structure	14.0%	95	13.30			
Exterior Enclosure			79.10	16.0%	12.66	
Walls	45.0%	89	38.70			
Windows	13.0%	20	2.60			
Doors/ Storefront	12.0%	85	10.20			
Roofing	30.0%	92	27.60			
Interior Construction			67.85	18.0%	12.21	
Partitions	35.0%	80	28.00			
Doors	10.0%	85	8.50			
Fittings / Millwork	16.0%	60	8.00			
Stairs	1.0%	85	0.85			
Wall Finishes	12.0%	80	9.60			
Floor Finishes	16.0%	40	6.40			
Ceiling Finishes	10.0%	85	6.50			
Conveying Systems			60.00	1.0%	0.60	
Elevator	100.0%	60	60.00			
Mechanical			45.50	24.0%	10.92	
HVAC	55.0%	40	22.00			
Temperature Controls	10.0%	40	4.00			
Plumbing	30.0%	65	19.50			
Fire Protection	5.0%	80				
Electrical			65.26	12.0%	7.83	
Lighting & Controls	35.0%	80	28.00			
Service & Distribution	35.0%	85	29.75			
Fire Alarm	10.0%	75	7.50			
IT Systems	10.0%	60	6.00			
Security/Access Control	10.0%	25				
Accessibility			81.00	1.5%	1.22	
Parking & Exterior Route	20.0%	55	11.00			
Interior Route	20.0%	50	10.00			
Doors & Hardware	20.0%	100	20.00			
Restrooms, Lockers & Showers	20.0%	100	20.00			
Special Systems	20.0%	100	20.00			
Code Compliance			77.50	1.5%	1.16	
Exiting & Exit Pathway	25.0%	70	17.50			
Vertical Separations	25.0%	85	21.25			
Area Separations	25.0%	85	21.25			
Special Systems	25.0%	70	17.50			
Building Grade						67.98

Building Upgrades Needed:

- Accessibility
- Elevator
- 1st & 2nd Floor Structural
- Exterior Wall Repairs
- Finishes Worn / Dated
- Kitchen Exhaust
- Kitchen Equipment (partial)
- Drainage Improvements
- Window Replacement
- Water Coolers
- Grease Interceptor
- Heat Pump Water Pumps
- Boiler
- Temperature Controls
- Lighting and Controls
- Access Control
- Fire Alarm System
- AV and IT Infrastructure
- Clock System
- Playground Surface and Accessibility



RAYMOND CENTRAL PS

Composite Results

<u>Site</u>	<u>Educational Alignment</u>	<u>Facility Assessment</u>	<u>Composite Score</u>
Ceresco	48.67	72.15	60.41
Valparaiso	46.46	67.98	57.22
Pre-School/JR/SR High School	47.56	78.59	63.12

Scale:

Excellent = 90-100

Good = 70-89

Fair = 50-69

Poor = 0-49

Learning Environment Importance



A study by the University of Salford found that **the school environment can affect a typical child's academic progress by 25%** (negative or positive) in one academic year. This study reinforces that the most powerful impact is made by the physical design of the particular classroom. *(Smith System)*



SCHOOL COMMUNITY



INDOOR ENVIRONMENT



QUALITY OF ARCHITECTURE

PRIMARY ISSUES

1. Age and Condition of Buildings:
 - Valparaiso - c1923 2-Story Building with Additions
 - Ceresco - c2000 Poor Original Construction, Topography
 - PS/JR/SR High - c1959 Military Complex with Additions
2. Building Upgrade Needs (per Facility Audit)
3. Educational Needs:
 - 2 Elementary Attendance Centers Dilute Effectiveness
 - Travelling Staff & Students Dilute Effectiveness & Efficiencies
 - Specialized Education Utilizing Make-Shift Accommodations
 - HS Science and Fine Arts Need Upgrades
 - Accessibility is Limited By Buildings
 - Security Could be Improved

TEACHER/STAFF QUOTES

“A majority of the classrooms feel like there isn’t enough space for the learning that needs to take place.”

“We need more room in general - especially as we continue to grow!”

“[The current facilities] makes is nearly impossible for handicapped students to fully participate and join their classmates.”

“[Staff] are not able to meet kids needs at the right time... staff are travelling so much that it is really hard to be in the right place at the right time.”

“We could do more with less if the spaces were all together.”

“We’re not able to be in the right place at the right time because we are so spread out.”

“If we could team teach in a pod setting, we could work to everyone’s strengths.”

ADMINISTRATOR QUOTES

“Our students deserve facilities that provide them with opportunities and inspiration at least at the same level as surrounding districts.”

“The current facilities and travel times do not allow us to put teachers and students in the best place for success - if we could combine all grades at the central site it would change the game.”

“We are already out of space for the students and programs of today.”

“Teaching and Learning has changed a lot since the elementaries were built or remodeled. Our students and teachers are doing the best they can with the obstacles these old buildings provide.”

“RCPS needs a long term vision for how we can modernize the facilities to match the educational approaches of today and those to come.”

8/31/2022 COMMUNITY INSIGHT

Option #1		Option #2		Option #3		Option #4	
PK-3 @ Ceresco / 4-6 @ Val		New PK-6 @ Central Site		HS Additions / Renovation		Existing Central Campus-Elem / New-HS	
Pros	Cons	Pros	Cons	Pros	Cons	Pros	Cons
Utilizes space	Splits families more	One facility	Not improving HS	Provide the extra room that is needed	Always need repairs - always have cost	Option kids more	Lots of \$\$
Numbers solution	Transportation logistics	Everyone can work together	Every kid will travel	Address preschool accessibility	Cost	Better facility for HS	Convert HS to elementary = \$\$
Collaboration of teaching	Constant school change	Eliminate travel time for teachers/specials/admin	Money spent/Increase Property taxes	Improve current repairs needed - we have no auditorium	Doesn't solve all concerns-travel to 3 sites, facility deficiencies	Less bus time	Loss of state aid for two two elementary sites/currently \$360K
Co-teaching	Unity (lack of)	Consolidate kitchen & more efficient	Taking away from community presence and involvement/Kids can't walk to business	Address Fine Arts and SpEd needs	Same core structure - ongoing issue - old original building	Brings everyone together	Little kids riding w/older siblings dangerous
More cost effective	Increase bus / travel time - safety	Collaboration of grades	Safety due to kids traveling	Transform temporary classrooms to permanent space	New facility last the length of time to pay for it	All athletics to one site including softball, auditorium, gyms	Kill towns?
Communities keep their schools	Bandaid - temporary solution	Increase security	Travel - Older patrons may not drive to assist in classrooms	Improve safety, security & accessibility (ADA)	Life expectancy of facilities/additions	Gain state aid 2 year new school adjustment	
Earlier integration of towns/kids	Doesn't solve playground or site issues	Better lighting - everything state-of-the-art	Loss of state aid for two two elementary sites/currently \$360K	Improved traffic flow			
Small town EMTs closer	Still an old building	Money saved	Kill towns?	Improve teaching efficiency of staff, students, facilities			
	Class sizes - rooms big enough?	Share gym space for activities/ practices					
	3X utilities, support staff	Collaboration of all RC students at one site					
	3X mow, snow, etc	Parents only need to take students to one site					
	No resource officers	Gain state aid 2 year new school adjustment					

INGREDIENT OPTIONS

A) ELEMENTARY REMODELS

PK-3 @ Ceresco	\$14,546,000
4-6 @ Valparaiso	<u>\$9,454,000</u>
	\$24,000,000

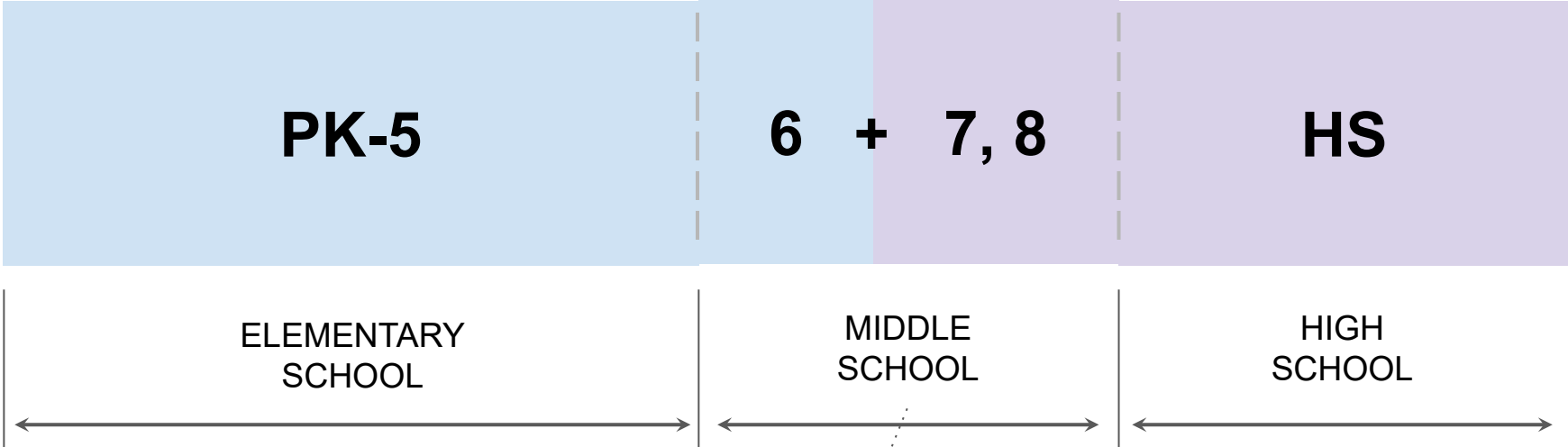
B) NEW PK-6 CAMPUS **\$33,200,000**

C) HS ADDITIONS & REMODELS **\$28,401,000**

D) RECONFIGURE PK-12

Remodel Central HS to PK-8	\$32,657,000
New High School Campus	<u>\$71,920,000</u>
	\$104,577,000

ADMIN PHASE 1 PRIORITIES



#1 Consolidated Central Site

LONG TERM SOLUTION

#2 Extended Life via Remodels + Additions

ADMIN *REVISED* PRIORITIES

#1

PK-6

Combined at Central Site

Team Teaching

55 Students per Class = 3 Section Building

Practice or Competition Gym?

#2

JR/SR High School

CTE Labs Remodel

SPED, Science Classrooms Remodel

Upgrade Elevator

10/17/2022

COMMUNITY
COMMITTEE
MEETING

EDUCATIONAL PRIORITIES

<u>Response</u>	<u># Responses</u>
Elementary Student Collaboration & Equity	7
HS Upgrades	7
Shared Space/Site, Central Location	6
Modern Learning Environment	6
Elementary Team Instruction & Learning	5
Faculty Collaboration	3
Reduce Teacher Travel	2
HS Fine Arts, Science, Vocal Upgrades	1
Update Sports Facilities	1
Special Education Modificatoin	1
Splitting Grade Levels @ Val/Ceresco	1
Cost Effective	1
Need Advanced Learning or Accelerated Options	1
It's Not Going to Get Any Cheaper	1
Building Bigger than Current Needs	1

OBSTACLES

<u>Response</u>	<u># Responses</u>
Cost to Build	12
More Bussing - Having Enough Drivers	4
Water Availability	3
Get Over Old School Thinking - IE: Focusing on What Was Good Enough in the Past	2
Moving 6th Back to Elementary Setting	2
Community School Sentiment	2
Loss of Some State Aid	2
Need to See Beyond Elementary/What Could Those Buildings Bring to Town	1
Concern of the Unknown - Will Towns Go Away	1
Staff Shortages	1
Will it Cause an Enrollment Cap?	1

KEY QUESTIONS

<u>Response</u>	<u># Responses</u>
Water Availability/Support/Cleanliness?	5
Bussing Cost/Availability of Drivers?	3
Will Costs Get Better in the Future?	2
How can We Improve the Entire System to Provide the Best Outcomes for Students?	1
When will the Patron Committee Questions from Feb 2022 be Updated Again?	1
What Security Operations are Being Discussed?	1
Is It Really Responsible to Build a New Site in This Uncertain Economy?	1

Next Steps

- **BVH to Work with Hausmann Construction to Review Estimates**
- **BOE Work Sessions to Discuss Scope and Budgets?**
- **Other Discussion?**

Thank you

BVH
ARCHITECTURE

November AD Board Report
Mr. Tony Kobza
Assistant Principal/AD

Athletic Fall Season

Fall Seasons have wrapped up. We had a softball player, Cam Simmons, receive All-Conference Honorable Mention. Volleyball had a 2nd team All-Conference player in Quincy Cotter and Honorable Mention for Taylor Oldfield. Football awards are still being finalized.

Activities

Our FFA students represented us well at FFA Nationals and we had a team qualify for the State Land Judging Competition held in Scottsbluff. Speech and Quiz Bowl have begun their competitions with varying levels of success. Our public One Act performance is Friday, November 18th. We also held our first Band and Choir Concert with some amazing performances by our students.

Athletic Winter Season

The Winter Sport Season started on Monday, November 14th. Girls and Boys basketball have begun as well as wrestling. This year is our first year that we will be offering Girls wrestling. We are looking forward to growing that program! Our Junior High Boys have begun their basketball season and our High School basketball and wrestling teams will begin playing games the week of November 28th.

Concussion Protocol

This week we will be establishing baseline testing for our Winter athletes through our new Sway App. I believe we will benefit greatly from having a baseline test to help us better evaluate students as they recover from possible concussions.

Drug Testing

We are continuing to randomly test students every other week. So far, each test has been a negative result, which we are happy to see. More students have been added to our pool as we enter the Winter Seasons.

LED ScoreVision

The LED ScoreVision scoreboards have been installed and look AMAZING! We were able to host our first public event for Veterans Day. On the boards we were able to have the American Flag waving throughout the program. We also showed a video of a graduate of Raymond Central who is serving overseas. We look forward to expanding on the functionality of the boards. A huge thank you to the families that donated and the businesses that have purchased advertising space on the boards to fully fund the cost.

Concession Stand

We have made several upgrades to our indoor concession stand. Some of the upgrades are new storage solutions, nacho cheese dispensers and a new popcorn machine. This has cleaned up the area and created more space and organization.

East of Building Tree Clearing

We have established plans to clear out the trees and grade an area of land that is just East of the football practice field. We are hoping to clear and grade this land to potentially allow more practice space for softball and baseball which would keep our students on campus for after school practices. We are scheduled to have the trees, including stumps removed in January as well as

November SpEd Board Report
Mrs. Amanda Coufal
Special Education Director

504's on SRS:

- The SRS Advisory board approved the launch of changes to SRS, including the 504 roll out, on November 1st. This information was shared with our district's 504 coordinators. This feature will allow all 504 plans to be housed in one place just like our IEP records and can be transferred from one school to the next if they are an SRS school. Our 504 coordinators have begun the process to transfer 504 plans into the SRS system but this will take some time. This will be a beneficial tool for our district.

Special Education Law Conference:

- Caitlin Roussan and myself attended the Tri-State Regional Special Education Law Conference in Omaha on November 3rd & 4th. We will be sharing what we learned with the special education staff. Some of the topics that we attended were:
 - What's Been Happening in Special Education Law
 - Lessons from Recent State Complaints & Due Process Hearing Decisions
 - Writing a Legally Defensible Transition-Focused IEP
 - Child Find, Rewind: The Ways You're Behind
 - Least Restrictive Environment: Using Data and Legal Requirements to Drive Improvement
 - Setting Ambitious, Gap-Closing, IEP Goals
 - The Requirement to Conduct FBAs and to Develop and Implement BIPs
 - Meaningful Parent Participation
 - Discipline Dilemmas
 - FAPE: Where are We in 2022

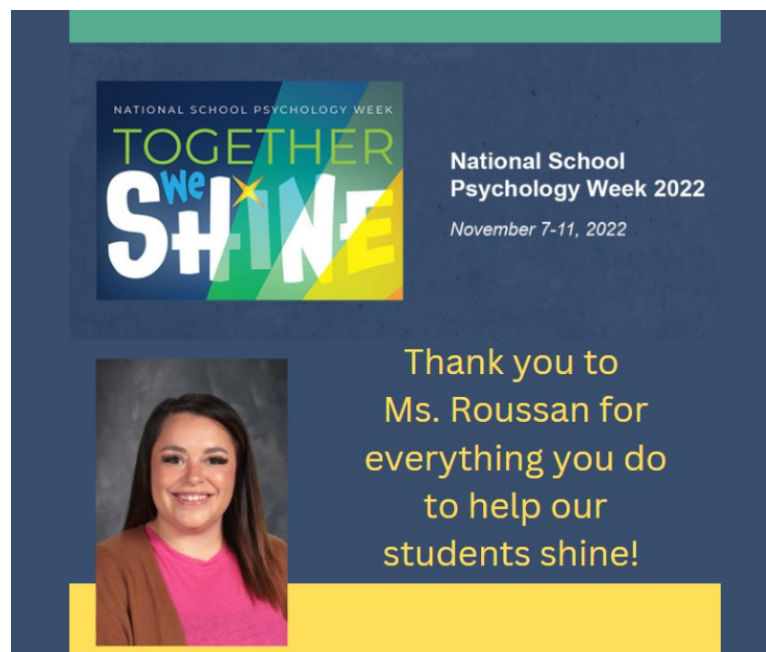
Paraeducator Conference:

- Matt Smith, Kristen Lovell, Ashley Matulka, and myself attend the 33rd Annual Nebraska Paraeducator Conference in Kearney on November 8th. This is a great opportunity for our paraeducators to be recognized, appreciated, and gain valuable knowledge that they can take back to their respective schools. This is always a great opportunity for our paraeducators. Some of the topics that we attended were:
 - Paras Make It Possible
 - Be Informed, Confident, and Empowered
 - Augmentative & Alternative Communication Assistive Technology
Paraeducator Bootcamp

- Beyond the Flashcards: How Children Learn to Read
- Behavior is Communication
- Para (Legal) Update: What Every Paraeducator Should Know About the Law
- Building Relationships for Meaningful Learning

National School Psychology Week:

- The week of November 7th-11th, we celebrated our awesome School Psychologist. Caitlin Roussan is a vital member of our district. Not only does she bring expertise in the area of school psychology, but she is always looking for ways to improve our school district. She leads our SPS elementary school team meetings, is the 504 coordinator in our elementary schools, and runs our SAT meetings. She also works 1:1 with many students to help them process their emotions. She does a great job explaining testing results to parents, and provides strategies for teachers to try in their classrooms. Raymond Central School District is lucky to have Caitlin as our school psychologist!



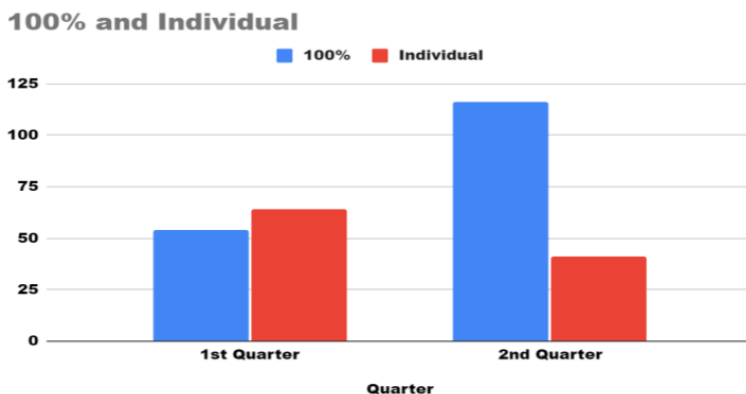
November Board Report
Mr. Steve Rose
Principal | Elementary

Mrs. Deb Kruse
Assistant Principal | Elementary

Topics

- Targeted Professional Development - This is structured to attend to increasing our capacity of reaching our Campus Improvement Goal of 80% Reading Proficiency.
 - **Continued...** Steve and Deb are conducting multiple walkthroughs weekly in teachers classrooms to determine district and individual teacher needs. Through those walkthroughs we have identified a need for staff instruction on the following:
 - **Continued...** Staff Meetings every 3 weeks to discuss
 - 10 Big Ideas / Checks for Understanding with 100% active participation
 - Based on Explicit Instruction: Anita L. Archer
 - PD #3 and PD #4
 - #3 was delivered around [Big Idea #2](#) and Big Idea #9
 - These 2 ideas are centered around making sure that responses are used to check for understanding of an objective and that they are preplanned and connected to the purpose for learning.
 - #4 was delivered to tie everything that we've been doing back to our School Improvement Goal and give teachers the opportunity to share via "carousel" what they have learned so far and how the application of our PD has impacted instruction in their classrooms. We also used this opportunity to share some data that amplifies the needs that we have laid out for our professional development this year. We also shared our data related to our goal of increasing 100% Active Participation to show the shift that we have seen in our walkthroughs.

100% Active Participation Data (OTRs)



-
- [Science of Reading](#)
 - **Continued...** During these last sessions we are starting to develop the understanding of what we need to implement to bolster instruction in the areas of Word Recognition that will lead to the advancement of Reading Comprehension.

We are in the process of evaluating materials that will be used to replace the outdated and non-instructionally sound Wonders Reading Program that we have used for the last several years.

- Caryn from the ESU is aiding in the evaluation and selection of these materials with her knowledge of what we need and what other schools in this process have already chosen. We hope to have the curricular materials decided on by the first of the year.
- We have received copies of three different sets of reading materials. The staff will be working on evaluating these materials in relation to information that we have been learning in our in-services with ESU2. These are the three:
 - Amplify [CKLA](#)
 - [EL](#)
 - [Wit & Wisdom / Geodes](#)
- Monica Blank with Caryn Zietlow are working on developing the grouping and evaluation process that we will start during our late start on Dec. 7th.
- School News
 - Lori Morgan applied and was approved for the ESUCC GEER Robotics Grant and will be receiving 12 [Cue Robots](#) to enhance her STEM / Computer instruction at the Elementary Level.
 - Lori also has created and submitted a grant application for the Region II Classroom Grant which will award her materials to use in the STEM Classroom if awarded up to \$400 worth of supplies.
 - Steve attended the Project Lead the Way (PLTW) Summit in Orlando from 10/27-10/30. The summit provided information about the next phase of the EIR Grant that we might be implementing at Raymond Central. We went to learn about the program as well as discuss and network with other schools that are similar to us about how this might be implemented effectively in our current setting. There was a lot of great information received but also more questions that will need to be answered from our Grant managers at the ESU before we move forward with this process.

Scott Shepard, 6-12 Principal
November Board Report

Student Engagement

This month during our late start, we took our staff through the Naviance Career Finder module. It is the same module we have all students go through along with the other programs in Naviance that will hopefully help them as they consider future careers and opportunities. Tasha continues to do a great job leading this initiative as staff will be expected to engage students in career conversations. Tony then led the staff through a curriculum mapping activity that will bring consistency to all classes by the end of the year. Lastly, we talked about questioning and engagement. Tony and I are looking for student engagement as we are completing observations.

Community Engagement

The Veterans Day Program was a success! It was awesome to have all K-12 students attend. We posted artwork from our elementary students and they all did the pledge and sang a song for the Vets. We had over 60 veterans in attendance for the program in which Dave Heineman did a great job educating our students and honoring the Vets. Our band and choirs sounded great! We used the new video boards for a special message from one of our graduates serving overseas. Thanks for your support of the program. We hope to grow it even larger next year!





Data

Our 6th-8th graders completed their fall NSCAS testing and will be tested again in the spring. 9th and 10th graders took the MAP test. This is an opportunity for us to see where our students are currently and then measure growth in the spring. I will report out data in future reports.

Events

The Winter Season fired up last week with our first jr. high boys basketball game. High School practices start this week and the One-Act play will perform this Friday on our stage at 7:30 pm.

Go Stangs!
Scott Shepard

Good evening Board Members, there have been a few eventful things that have occurred over the past month. This past Friday, we celebrated Veterans Day with a very honorable and memorable Veterans Day program here at the high school. In past years, student involvement within the Veterans Day program was very minimal. This year though, students had the opportunity to have a high amount of involvement within the program. To add to that, the entire student body as a whole was very engaged and attentive throughout the full duration of the program. A portion of the National Honor Society and Student Council members spent part of their afternoon at both elementaries assisting with Grandparents Day last Friday as well. I was one of the students who participated in this and I really enjoyed it because I was able to interact with kids whose grandparents didn't attend and engage in activities with them.

The Student Council has just put two fundraisers in action. The Decal Fundraiser just began this week, which will end on November 22nd. There is also a Toy Drive beginning as well to give toys to families in need so that children can have presents for Christmas. The Salvation Army, which oversees the drive also stated that they are in dire need of children's hats and gloves, which can also be brought in with toy donations. All donations can be brought here to the high school up until December 15th. On top of that, the Student Council has also established a new set of rules in regards to our attendance policy and action that would be taken following getting in trouble in class, suspensions, trouble with the law, etc. The Student Council is also looking into new ways to create more student involvement within the school by trying to collect ideas and collaborate with other students.

Student Council Rule Changes

Toy Drive and Drop Off Places?

Decal Fundraiser

Wrestling and Basketball just started

NASB BOARD NOTES

A MONTHLY PUBLICATION FROM THE NEBRASKA ASSOCIATION OF SCHOOL BOARDS



Leadership

Innovation

Vision

Engagement

#liveNASB

#weLIVEhere

1,960,000 Nebraskans 324,000 Students 1,700 Locally Elected School Board Members 260 Member Districts/ESUs ONE NEBRASKA

TWO BOARDS RECEIVE PRESIDENT'S BOARD AWARD ELEVEN OTHERS RECEIVE THE BOARD OF EXCELLENCE AWARD 38 SBMs SEE THEIR NAMES ETCHED IN STONE

<http://members.nasbonline.org/index.php/programs-services/awards-of-achievement-program>

As NASB wraps up our annual Area Membership Meetings, we would like to take a moment to highlight this year's boards who were honored for their collective volunteer time and commitment to education. This year, ESU 3 and Gretna Public Schools achieved NASB's highest full-board honor, earning the President's Board Award. Some of the criteria for this award include: having a voting delegate participate in the annual NASB Delegate Assembly; members of the board must each attend a minimum of three learning opportunities during the year, and each board member must participate in at least one local leadership team planning retreat per year. The full criteria can be found on the "President's Board Award" page at the link above.



ESU 3

STUART DORNAN, BRETT KUHN, ALAN MOORE, RON PEARSON, MARY SCARBOROUGH, BRENDA SHERMAN, TED STILWILL & STAN TURNER. ESU ADMINISTRATOR, DAN SCHNOES



GRETNA PUBLIC SCHOOLS

DAVID GULIZIA, MARK HAUPTMAN, RICK HOLLENDIECK, KYLE JANSSEN, DAWN STOCK & ANN WRIGHT. SUPERINTENDENT: RICH BERAN

In addition to the two President's Board Award winners, 11 boards received the Board of Excellence Award. Some of the criteria for this award includes having a voting delegate participate in the annual NASB Delegate Assembly; members must each attend a minimum of two learning opportunities during the year; and board members must participate in at least one local leadership team planning retreat per year. The full criteria can be found on the "Board of Excellence Criteria" page at the link above.

AINSWORTH COMMUNITY SCHOOLS - CEDAR BLUFFS PUBLIC SCHOOLS - GERING PUBLIC SCHOOLS - HEARTLAND COMMUNITY SCHOOLS - HERSHEY PUBLIC SCHOOLS
LINCOLN PUBLIC SCHOOLS - NORRIS SCHOOL DISTRICT 160 - OSCEOLA PUBLIC SCHOOLS - RALSTON PUBLIC SCHOOLS - ST. PAUL PUBLIC SCHOOLS - YORK PUBLIC SCHOOLS



CONTINUED ON PAGE 3

TRAINING, NETWORKING, ENGAGEMENT & EVENTS

Leadership

Innovation

Vision

Engagement

#liveNASB

#weLIVEhere



1,960,000 Nebraskans

324,000 Students

1,700 Locally Elected School Board Members

260 Member Districts/ESUs

ONE NEBRASKA

<http://members.nasbonline.org/index.php/events>



Your Monthly Board Agenda Update Video Links from NASB

<http://members.nasbonline.org/index.php/news-resources/videos>



WATCH: NASB Member Virtual w/ Gubernatorial Candidates Pillen & Blood from October 17

WATCH: State Board of Education Candidate Video Quick Q&As ... Recorded in October



Statewide General Election - November 8

Sparq Data Solutions Open House - November 15 - Omaha

State Education Conference - November 16-18 - Omaha

2022 NASB Delegate Assembly - Friday, November 18 - 8:00 AM CT - Omaha

View and Download the 2022 Advocacy Handout for the Delegate Assembly now at:

<http://members.nasbonline.org/index.php/advocacy-handbook>



13th Annual Nebraska Children's Health & Education Summit - November 30 - Boys Town



New Board Member Workshops - December

DECEMBER 5 - GERING

DECEMBER 6 - NORTH PLATTE

DECEMBER 7 - KEARNEY

DECEMBER 8 - YORK

DECEMBER 13 - LA VISTA

DECEMBER 14 - NORFOLK



Check out dates for 2023 at <http://members.nasbonline.org/index.php/events>

38 SBMs SEE THEIR NAMES ETCHED IN STONE ...

Leadership

Innovation

Vision

Engagement

#liveNASB

#weLIVEhere



1,960,000 Nebraskans

324,000 Students

1,700 Locally Elected School Board Members

260 Member Districts/ESUs

ONE NEBRASKA

CONTINUED FROM PAGE 1

<http://members.nasbonline.org/index.php/programs-services/awards-of-achievement-program>

Technically it is glass, wood and metal, but yes, this year 38 locally elected, volunteer school board and ESU members serving their districts and communities were recognized as a Level VII, VIII, IX or X during this year's Area Membership Meetings for achieving new levels of success during the awards year. Board members are awarded for their advocacy efforts, participation in NASB Services and Programs, as well as attendance at NASB workshops and events. Just as board members have made a commitment to provide a quality education for students in their districts, NASB strives to provide quality resources and opportunities for its members. There are ten total levels.

CONGRATULATIONS TO THE ONE LEVEL X RECIPIENT FOR 2022

Kurt Moore - Cross County Community Schools

CONGRATULATIONS TO THE LEVEL XI RECIPIENTS FOR 2022

Mark Johnson - Ainsworth Community Schools, Brenda Sherman - ESU 3, Cheri Wirthele - ESU 4

Terry Brown - Grand Island Public Schools, David Gulizia - Gretna Public Schools, Dave Welsch - Milford Public Schools

Kathy Wolfe - Palmer Public Schools, John Mandl - Stanton Community Schools, Cheryl Landon - Waverly School District 145

CONGRATULATIONS TO THE LEVEL VIII RECIPIENTS FOR 2022

Brad Wilkins - Ainsworth Community Schools, Kim Burry - Bayard Public Schools, Jon Zimmerman - Beatrice Public Schools
Stephanie Summers - David City Public Schools, Don Ellison - ESU 7, Richard Stephens - ESU 7, Jim Vlach - Lyons-Decatur Northeast
Casey Meyer - Maxwell Public Schools, Keith Rudeen - Overton Public Schools

CONGRATULATIONS TO THE LEVEL VII RECIPIENTS FOR 2022

Jim Arens - Ainsworth Community Schools, Garlyn Grosse - Cedar Bluffs Public Schools, Shad Stamm - Dundy County Stratton Schools
Lynette Mitchell - Elm Creek Public Schools, Stuart Dornan - ESU 3, Sharon Ebke - Fairbury Public Schools
Mary Winn - Gering Public Schools, Dan Brosz - Grand Island Public Schools, Lisa Albers - Grand Island Public Schools
Kent Allen - Heartland Community Schools, Don Mayhew - Lincoln Public Schools, Cindy Ericson - Loup City Public Schools
Wayne Klein - Loup City Public Schools, Jeff Jenkins - Mitchell Public Schools, Teri Stukenholtz - Nebraska City Public Schools
Jennifer Boruch - Osceola Public Schools, Ken Winters - Plattsmouth Community Schools, Matt Glup - Plattsmouth Community Schools
Marcia Mahon - South Sioux City Community Schools

TWENTY-TWO BOARD MEMBERS HAVE REACHED LEVEL X

Wayne Heine - Centennial, Kent Malm - Central City
Kurt Moore - Cross County, Ron Pearson - ESU 3
Glen Larsen - ESU 9, Marilyn Bohn - ESU 10/Ravenna
Richard Zimmerman - Fairbury, Kathy Bartek - Falls City
Jacqueline Maynard - Hastings, Steve Koch - Hershey
Julie Agard - Kearney, Brian Holcomb - Laurel-Concord-Coleridge
Kathy Danek - Lincoln, Linda Poole - Millard
Patty Bentzinger - Norris, Nancy Kratky - Omaha
Sandra Jensen - Omaha, Linda Richards - Ralston
Kyle Fisher - Springfield Plattview, Suzan DeCamp - St. Paul
Lila Koop - Wallace, Robert Sykes - Wilber-Clatonia



AT THE BOARD TABLE

Leadership

Innovation

Vision

Engagement

#liveNASB

#weLIVEhere



1,960,000 Nebraskans

324,000 Students

1,700 Locally Elected School Board Members

260 Member Districts/ESUs

ONE NEBRASKA

BOARD CALENDAR AGENDA ITEMS FOR YOUR NOVEMBER MEETINGS

<http://members.nasbonline.org/index.php/board-leadership>

Each month, this space reflects the recommended and required upcoming agenda items to be included in the regular board meeting agenda. If you have questions about the monthly board meeting agenda items or recommendations for improving the Annual Board Calendar, please never hesitate to contact Marcia at 800-422-4572 or mherring@NASBonline.org. View the full calendar at: <http://members.nasbonline.org/index.php/resources>

MISSION, VISION & GOALS

- Strategic Plan Update; District Goals Update

POLICY GOVERNANCE

- Review, update, and adopt policy

DISTRICT/ESU RESOURCES (BUDGET)

- Review District Audit Report

BOARD-SUPERINTENDENT RELATIONS

- Distribute the superintendent evaluation to be completed by each board member. *NASB Online Survey System, direct the Association to distribute links to each individual board member to complete the superintendent evaluation. Note: Review board policy and superintendent contract to ensure the board is meeting the directives of both documents. Reminder to Superintendents and Board Members:
 - review the current superintendent contract for language pertaining to the superintendent reminder in writing to evaluate and discuss contract renewal
 - review deadline dates for the renewal of the superintendent contract
 - post proposed contract and Schedule D on website per Superintendent Transparency Act

REPORTS

- November 8, 2022, Statewide General Election - Register newly elected board members for State Conference and the Conference Board
- Mentor/Mentee Session Thursday, November 17, 2022, at 7:15 a.m.
- Board Committees; Superintendent; Administrators

BOARD LEADERSHIP DEVELOPMENT

- Review and discuss Board Governance Standard IX. Professional Development
- NASA/NASB State Education Conference
- NASB Delegate Assembly

2022 NEW BOARD MEMBER WORKSHOPS

Monday, December 5 - Gering Civic Center
Tuesday, December 6 - North Platte - Venue 304
Wednesday, December 7 - Kearney Holiday Inn
Thursday, December 8 - York - Holthus Center
Register By Tuesday, November 29

Tuesday, December 13 - La Vista - Embassy Suites
Wednesday, December 14 Norfolk Country Club
Register By Wednesday, December 7

The workshop agenda will include Open Meetings Law, Public Comment, Conflict of Interest, Closed Session, Policy, Community/Stakeholder Engagement, social media, Accountability and Student Achievement, Rule 10, Advocacy, Budget Finance, Board Meeting Protocols and Procedures, Superintendent Evaluation, and Board Self-Assessment, breakout session for ESU board members, and more. Register at www.NASBonline.org.

Questions regarding the NBMW, please contact Marcia Herring, NASB Director of Board Leadership at mherring@NASBonline.org or 402-817-0296.



STATE EDUCATION CONFERENCE UPDATE

REG NOW!

Leadership

Innovation

Vision

Engagement

#liveNASB

#weLIVEhere



1,960,000 Nebraskans 324,000 Students 1,700 Locally Elected School Board Members 260 Member Districts/ESUs ONE NEBRASKA

<http://members.nasbonline.org/index.php/state-education-conference>

WEDNESDAY, NOVEMBER 16

PRE-CONFERENCE SESSIONS - 1:00 TO 4:00 PM

EXHIBITOR RECEPTION - 4:00 TO 5:30 PM

THURSDAY, NOVEMBER 17

BOARD MEMBER/MENTOR COLLABORATION - 7:15 TO 8:15 AM

OPENING KEYNOTE SPEAKER - 8:30 TO 9:45 AM

A - BREAKOUT SESSIONS - 10:00 TO 11:00 AM

B - BREAKOUT SESSIONS - 11:30 AM TO 12:30 PM

THURSDAY LUNCHEON KEYNOTE SPEAKER - 12:45 TO 2:00 PM

C - BREAKOUT SESSIONS - 2:15 TO 3:15 PM

D - BREAKOUT SESSIONS - 3:30 TO 4:30 PM

FRIDAY, NOVEMBER 18

CLASSROOM SHOWCASE - 7:30 TO 11:30 AM

NASB DELEGATE ASSEMBLY - 8:00 TO 9:30 AM

E - BREAKOUT SESSIONS - 9:15 TO 10:15 AM

F - BREAKOUT SESSIONS - 10:30 TO 11:30 AM

FRIDAY LUNCHEON KEYNOTE SPEAKER - 11:45 AM TO 1:15 PM



WEDNESDAY, NOVEMBER 16

PRE-CONFERENCE SESSIONS

**EDUCATOR SHORTAGE:
TAKING CARE OF BUSINESS**

**A CIVIL DISCOURSE: BOARD,
ADMINISTRATION, AND INDIVIDUAL
RESPONSES IN TENSE SITUATIONS**



KEYNOTES

GUIDING THROUGH THE STORM - JEFF EVANS

Jeff's skills have been acquired not only on the highest peaks around the world, but also through guiding blind climber Erik Weihenmayer on extraordinarily challenging objectives including the summit of Mt Everest and a 2nd place finish on ABC's adventure series, Expedition Impossible. Jeff reminds us that, in fact, we are all guides in some capacity...professionally and personally. These experiences highlight the importance of adopting an expeditionary mindset necessary to succeed in our current VUCA (Volatile, Uncertain, Complex, and Ambiguous) world, which often involves the ability to evaluate and adjust the ever-changing route up the mountain, the tools in your pack and the trajectory of the team.

STATE OF THE ASSOCIATIONS ADDRESS - NASB & NCSA LEADERSHIP

CREATING THE CHAMPION WITHIN - MOLLY KENNEDY

Her heart's work is to inspire you to paradigm shift your way to developing a resilient mindset that breeds confidence and success. Molly's message will empower you to get UNstuck from any challenge or transition life throws at you. You'll learn practical, user-friendly strategies applicable to every aspect of life. This message will stick to your ribs! She 'walks the walk' when it comes to resiliency, grit and perseverance. Molly grew up in a dysfunctional family with addiction, divorce, abuse, neglect, abandonment, suffered from an eating disorder, was suicidal and a runaway at 15 years old. Prepare yourself for a message of how to overcome obstacles, reach goals and create the best version of yourself!

BE SURE TO INVITE YOUR NEWLY ELECTED BOARD MEMBERS TO ATTEND THE STATE EDUCATION CONFERENCE. HERE ARE A FEW REASONS WHY: THERE IS A LEARNING TRACK FOR NEWLY ELECTED BOARD MEMBERS. NETWORKING WITH OTHER BOARD MEMBERS. LEARNING FROM EXPERTS. NEW BOARD MEMBER MENTOR PROGRAM.

NEWLY ELECTED BOARD MEMBERS CAN REGISTER ONSITE FOR \$175.

CHOOSING YOUR BOARD'S DELEGATE

Leadership

Innovation

Vision

Engagement

#liveNASB

#weLIVEhere



1,960,000 Nebraskans 324,000 Students 1,700 Locally Elected School Board Members 260 Member Districts/ESUs ONE NEBRASKA

<http://members.nasbonline.org/index.php/advocacy-handbook>

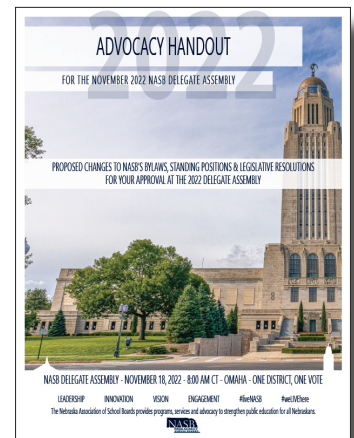
CHOOSING YOUR BOARD'S DELEGATE FOR THE 2022 DELEGATE ASSEMBLY

This year's Delegate Assembly will take place Friday, November 18, at 8:00 AM, in conjunction with the State Education Conference, at the CHI Health Center - downtown Omaha. Per the NASB Bylaws, each member district and ESU board of education is allowed and encouraged to have one board member as their voting delegate. As a reminder, having a representative of your board attend Delegate Assembly is a requirement for all boards working towards either the Board of Excellence Award or the President's Board Award highlights on page 1.

All items within the *Advocacy Handout* will be considered by this Assembly. The NASB Advocacy Handout of proposed changes to the bylaws, standing positions and legislative resolutions for your review prior to the 2022 Delegate Assembly is now posted at the NASB website. To better prepare you and your board's voting representative for the Delegate Assembly, please download, review, and bring this Handout with you to Omaha.

<http://members.nasbonline.org/index.php/advocacy-handbook>

If you haven't already, each board should select one board member to represent the district or ESU as the voting delegate, although multiple members from each board may attend. As a school board member, this is YOUR chance to be heard and help craft the 2023 legislative and leadership initiatives for NASB.



2022 NASB MEMBER DELEGATE ASSEMBLY - FRIDAY, NOVEMBER 18 - 8:00 AM - OMAHA

WHY IS IT IMPORTANT FOR YOUR DISTRICT TO BE REPRESENTED AT THE DELEGATE ASSEMBLY?

The Delegate Assembly determines NASB's annual legislative and leadership agenda.

The Delegate Assembly is a key cog in securing laws, regulations, and a vision in Nebraska to benefit public education.

The Delegate Assembly is where your voice can be heard.

The Delegate Assembly is your governance meeting for the entire year.

The Delegate Assembly allows for equal representation. One district. One vote.



LEADERSHIP CHOICES OF EFFECTIVE ELECTED OFFICIALS

Leadership

Innovation

Vision

Engagement

#liveNASB

#weLIVEhere



1,960,000 Nebraskans 324,000 Students 1,700 Locally Elected School Board Members 260 Member Districts/ESUs ONE NEBRASKA

Prior to her election to the State Board of Education in November 2020, Patti Gubbels served on the Norfolk Board of Education, and was a member of the NASB Board of Directors, and the NASB Legislation Committee since 2016.

Effective elected leaders possess not only typical skills associated with leadership such as open-mindedness, sound decision-making and empowerment of others, but also qualities that are derived from conscious or subconscious choices they make.

Consider the choice of providing public service versus promoting oneself. Service is contributing time and effort for the betterment of something without the expectation of getting something in return. For example, State Board of Education service is focused on “leading and supporting the preparation of all Nebraskans for learning, earning, and living.” Service is contrary to choosing to participate with the expectation of personal gain or predetermined outcomes. Effective public servants choose to *serve*.



Elected officials are on public display because of the Public Records statutes and because they are recognized in public spaces. That is, text messages, phone conversations, and emails may be subject to public records requests if they contain business communications. Elected officials can choose to communicate in professional ways that model qualities such as respect, integrity, and honesty, or choose to communicate in ways that fuel anger, foster mistrust, are disrespectful, or erode credibility.

Leaders are often recognized and scrutinized when in public spaces. The line between private and public life becomes blurred. Elected officials have opportunities, through the choices they make and because of their visibility, to model admirable qualities or open themselves up to criticism.

For example, when I taught prospective teachers, I stressed that parents and community members view teachers as teachers no matter where they are or what they are doing. I encouraged prospective teachers to use that visibility to model exemplary behaviors they hope to develop and experience with students they teach.

I was reminded of the blurred line between private and public life some years ago when the co-ed volleyball team I played with went to a bar after a game to socialize and have a drink. One of my college students happened to be in the same establishment. She came over to our table to say hello. Her first comment was “Dr. Gubbels, what are *you* doing here?” I responded by saying, “Josi, what are *you* doing here?” Then we had a conversation about the importance of recognizing when you are in the public eye your behaviors influence how others “see” you.

Finally, public servants can choose to be conscientious, by trying to do the right thing and expressing genuine regret when they have made a mistake or said something hurtful. Or, elected officials can choose thinly veiled apologies that truly express regret at being caught in a wrongful act.

I am grateful for public servants who serve because they believe they have an obligation to help, who give others respect and dignity, who model professionalism, who try to do the right thing and have the courtesy to apologize when they make mistakes. As a civilized society we should expect and accept nothing less from our elected leaders.

Disclaimer: The opinions from Dr. Patti S. Gubbels are hers and do not represent the Nebraska State Board of Education.

“Service is contributing time and effort for the betterment of something without the expectation of getting something in return. Effective public servants choose to serve.”

NASB'S CANDIDATE RESOURCES LEADING UP TO NOV 8

Leadership

Innovation

Vision

Engagement

#liveNASB

#weLIVEhere



1,960,000 Nebraskans

324,000 Students

1,700 Locally Elected School Board Members

260 Member Districts/ESUs

ONE NEBRASKA

<http://members.nasbonline.org/index.php/government-relations>

LEGISLATIVE ... GUBERNATORIAL ... STATE BOARD GET TO KNOW YOUR CANDIDATES

With the November 8th General Election coming up, Nebraska's 1,700 locally elected school board members are eager to learn more about the views and opinions of their fellow elected leaders and candidates running for the Legislature, Governor and the State Board of Education, many of whom we will be working with come January. Here are the resources, pages, links, and upcoming dates to keep you as informed as possible heading into November.

NASB Member Virtual w/ Gubernatorial Candidates Pillen & Blood

RECORDED OCTOBER 17

<http://members.nasbonline.org/index.php/government-relations>

See The Nebraska Examiner's Q&A with the Candidates as well ...

<https://nebraskaexaminer.com/2022/10/19/q-and-a-in-nebraska-governors-race-pillen-blood-talk-about-education-property-taxes/>

State Board of Education Candidate Video Quick Q&As

RECORDED THROUGHOUT OCTOBER

<http://members.nasbonline.org/index.php/government-relations>

Legislative Candidate Questionnaires

SURVEYS ARE POSTED AT:

<http://members.nasbonline.org/index.php/2022-legislative-candidate-questionnaire>

Legislative Meet & Greets

<http://members.nasbonline.org/index.php/legislative-lunches>

NASB has hosted Meet & Greets with District 42 Candidate Jacobson in North Platte, D44 Candidate Ibach in Lexington, D34 Candidate Lippincott in Central City, D36 Candidate Holdcroft in Springfield, D24 Candidate Hughes in York, D36 Candidate Lauritsen in Papillion, D48 Candidate Lease II in Scottsbluff, D40 Candidate DeKay in Plainview, D18 Candidate Young in Elkhorn, D24 Candidate Hotovy in Stromsburg, D48 Candidate Hardin in Scottsbluff, and D16 Candidate Petersen in Blair.



VOTE

NASB does not endorse candidates and does not make recommendations to members, or anyone, on whom to support for election. NASB may, from time to time, provide opportunities for candidates for elected office to meet with or communicate with its membership. Any NASB event allowing candidates for office to meet or communicate with its membership should not be considered a direct or passive endorsement of any candidate.

SAMSUNG'S SOLVE FOR TOMORROW STEM COMPETITION

Leadership

Innovation

Vision

Engagement

#liveNASB

#weLIVEhere



1,960,000 Nebraskans 324,000 Students 1,700 Locally Elected School Board Members 260 Member Districts/ESUs ONE NEBRASKA

<https://news.samsung.com/us/samsung-solve-for-tomorrow-annual-2-million-contest-passion-stem-education/>

Samsung Opens Applications for Annual \$2 million Solve for Tomorrow Contest Igniting Passion for STEM Education

Nebraska School Districts, are you aware of Samsung's Solve for Tomorrow STEM Competition? The competition challenges students in grades 6 to 12 to use STEM to create innovative, sustainable solutions that transform location communities. Public school teachers can apply for the program through November 2. Samsung will award \$2 million in technology and supplies to classrooms in every state as part of the program. To learn more information about the competition visit

<https://news.samsung.com/us/samsung-solve-for-tomorrow-annual-2-million-contest-passion-stem-education/>

SPARQ DATA SOLUTIONS

Tuesday, November 15 | 7-11 p.m.

The Old Mattress Factory Bar & Grill
501 North 13th Street
Omaha, NE 68102

JOIN US FOR OUR
OPEN HOUSE

GIFT CARD GIVEAWAYS EVERY HOUR
APPETIZERS AND DRINKS ALL SPONSORED BY SPARQ

RSVP to Nicole at nkobus@nasbonline.org

THIS MONTH IN ...

Leadership

Innovation

Vision

Engagement

#liveNASB

#weLIVEhere



1,960,000 Nebraskans

324,000 Students

1,700 Locally Elected School Board Members

260 Member Districts/ESUs

ONE NEBRASKA

... SEARCH, STRENGTHS & AWARDS

EDUCATION LEADERSHIP SEARCH SERVICE

Contact us with questions on superintendent search protocol, to schedule a proposal, or inquire about a vacancy. The deadline is approaching for Anselmo-Merna, followed by Boone Central, Cambridge and Osmond.

<https://nasb.myrevelus.com>

GALLUP STRENGTHSFINDER

Authentic leaders are always investing in strengths – their own strengths as well as those of their staff members. Consider a Gallup Strengthsfinder team session to gain valuable insight on individual and team strengths. If you have *Activator* in your Top 5, you may be described as catalytic, influential, and dynamic.

Email sbecker@NASBonline.org for these programs/services.

- Shari -

... BOARD LEADERSHIP

Check out “*At the Board Table*” on page 4.

NEW BOARD MEMBER WORKSHOPS

- December 5 - Gering
- December 6 - North Platte
- December 7 - Kearney
- December 8 - York
- December 13 - La Vista
- December 14 - Norfolk

Marcia, Kari, Katie, Caden & Spencer

... ADVOCACY & GOVERNMENT RELATIONS

Local Control, School Funding, The Role of Education in the State, Educational Workforce, Mandates & more! See how this year’s candidates for the Legislature, Governor & State Board of Education feel about these topics at: <http://members.nasbonline.org/index.php/government-relations>

NASB Delegate Assembly

Friday, November 18, at 8:00 AM

Each member district/ESU is allowed and encouraged to have one board member as their voting delegate. If you haven’t already, select your representative now! This is your chance to help craft NASB’s legislative and leadership initiatives for 2023.

Call Colby & Matt with any questions!

... POLICY

As many of you have found, state and federal agencies are doing far more monitoring lately of your district’s fiscal policies whenever project grants and ESSER funds are being handled. It’s well worth your time to make certain these are updated and kept together for each grant or federal funding disbursement you receive. Although they do require significant time, it’s important that your records be kept current as the projects progress so all project mandates can be met on a timely and accurate basis by the final deadlines.

Contact Jim to learn more!

... ENERGY PURCHASING

With the end of the long summer heat waves, one of the nation’s major natural gas export facilities not yet online from last winter’s fire damage, and a temporary stabilizing of the Ukraine war, storage volumes are finally rising a bit. These unpredictable elements in the natural gas supplies are another good reason for joining our NJUMP and CJUMP gas purchasing consortiums to help stretch your scarce resource dollars and provide budget certainty for utility costs. Your NJUMP and CJUMP gas purchasing consortiums have already locked in large quantities of gas for this winter providing protection for your scarce budget resources.

Contact Jim to learn more!

... DATA ANALYTICS

Now that your budget is set for the year, taking a look at the changes in your levy rates, per pupil costs, mobility and poverty rates compared with nearby districts or districts of a similar size can tell you much about the future your own district may face. Good planning needs to be a continual process, and understanding the direction of your district is basic to all your decisions. We are here to help you examine that data.

Contact Jim to learn more!

... MEMBER ENGAGEMENT

We are less than 30 days until the State Education Conference! Can’t wait to see you there!

Sharon

THIS MONTH IN ...

Leadership

Innovation

Vision

Engagement

#liveNASB

#weLIVEhere



1,960,000 Nebraskans

324,000 Students

1,700 Locally Elected School Board Members

260 Member Districts/ESUs

ONE NEBRASKA

... ALICAP & INSURANCE

ATTENTION ALICAP MEMBERS

The Annual ALICAP Membership Meeting is scheduled for Wednesday, November 16th from 4:00-5:00 at the CHI Center in Omaha, Room 210!

All ALICAP Administrators and School Board Members are invited to attend.

We hope to see many of you there!!!

Thanks, Megan!

... SOCIAL MEDIA

SOCIAL MEDIA EXPLAINED WITH DONUTS

FACEBOOK = I like donuts

TWITTER = I'm eating a #donut

INSTAGRAM = Here's the perfect photo of my donut

SNAPCHAT = Hi! Here's me currently chewing a donut

TIKTOK = Watch me shove a dozen donuts in my mouth

LINKEDIN = My skills include donut eating

PINTEREST = Here's a wedding cake MADE of donuts

WHATEVER PLATFORM YOU USE ... POST/SHARE WITH A PURPOSE!

Be strategic ... Be helpful ... Be judicious ... Be careful ...

Follow and tag @NASBOnline on social media at:

www.twitter.com/NASBOnline

www.facebook.com/NASBOnline

#liveNASB #weLIVEhere

... TECHNOLOGY

MARK YOUR CALENDARS

Join us for appetizers and drinks at the Old Mattress Factory Bar and Grill on Tuesday, November 15 from 7-11 pm.

We hope to see you there!

WELCOME NEW SUBSCRIBERS

North Bend Central Public Schools

Newman Grove Public Schools

Mullen Public Schools

Elmwood-Murdock Public Schools

Darion - dmiller@NASBOnline.org

Nicole - nkobus@NASBOnline.org

www.sparqdata.com



Paul Grieger
(800) 528-5145
pgrieger@dadco.com



Cody Wickham
(866) 809-5596
cwickham@dadco.com



Andy Forney
(866) 809-5443
aforney@dadco.com

Building a Better Future with Nebraska's Public Finance Partner

D.A. Davidson & Co. has long been a leader in innovative debt financing for school districts. What we're most proud of are the relationships we've nourished and the strong community improvements that are made as a result.

Our public finance professionals take a personal interest and a hands-on approach, carrying our deals from start to finish. Because you deserve solutions tailored to fit you.

- School Bond Issues
- Tax Anticipation / Construction Notes
- Lease-Purchase Financing
- QCPUF Bonds
- Refinancing Bond Issues



D | A | DAVIDSON

450 Regency Parkway, Suite 400 | Omaha, NE 68114

dadavidson.com | D.A. Davidson & Co. member FINRA and SIPC

Board Notes is published on a monthly basis as a member service. Advertising is available in every issue. To advertise or become an Affiliate, please contact Matt Belka for further information. Articles or advertising contained herein do not necessarily represent the views or policies of NASB.

Nebraska Association of School Boards
1311 Stockwell Street - Lincoln, NE 68502
Matt Belka, Editor - John Spatz, Publisher

YOUR NASB BOARD OF DIRECTORS & STAFF

Leadership

Innovation

Vision

Engagement

#liveNASB

#weLIVEhere



1,960,000 Nebraskans 324,000 Students 1,700 Locally Elected School Board Members 260 Member Districts/ESUs ONE NEBRASKA

YOUR NASB OFFICERS

<http://members.nasbonline.org/index.php/brdofdirectors>



Brad Wilkins - President
Ainsworth



Kim Burry - President-Elect
Bayard



Sandy Noffsinger - Vice President
Dundy County Stratton



Stacie Higgins - Past President
Nebraska City

YOUR NASB REGION DIRECTORS

<http://members.nasbonline.org/index.php/brdofdirectors>



Region 1 - Neal Kanel
HTRS



Region 2 - Sarah Centineo
Bellevue



Region 3 - Robin Richards
Ralston



Region 4 - Alan Moore
ESU 3



Region 5 - Shavonna Holman
Omaha



Region 6 - Tracy Casady
Omaha



Region 7 - Nancy Kratky
Omaha



Region 8 - Bob Rauner
Lincoln



Region 9 - Annie Mumgaard
Lincoln



Region 10 - Ed Swotek
Malcolm



Region 11 - Jim Vlach
Lyons-Decatur Northeast



Region 12 - Lisa Wagner
Central City



Region 13 - Marilyn Bohn
ESU 10



Region 14 - Steve Koch
Hershey



Region 15 - Joel Carlson
Cozad



Region 16 - Stephanie Summers
David City



Region 17 - Michelle Reikofski
Osmond



Region 18 - Doug Keener
Mitchell



Region 19 - Stacy Jolley
Millard

YOUR NASB STAFF

<http://members.nasbonline.org/index.php/nasb-staff>

John Spatz
Executive Director



Makenzie Barry
ALICAP Data &
Financial Specialist



Shari Becker
Director of Education
Leadership Search Service



Matt Belka
Director of Marketing,
Communications & Advocacy



Megan Boldt
Associate Executive Director/
Director of ALICAP



Craig Caples
Director of Technology



Abi Carlson
Event & Search Service
Associate



Colby Coash
Associate Executive Director/
Dir. of Government Relations



Katie Coble
Board Leadership Associate



Sharon Endorf
Director of
Member Engagement



Caden Frank
Board Leadership Associate



Marcia Herring
Director of Board Leadership



Sallie Horky
Chief Operating Officer



Rachel Horstman
Business Manager



Nicole Kraus
Events & Engagement
Associate



Kem Loecker
Executive Administrative
Assistant



Jim Luebbe
Director of Policy Services



Kari Stephens
Board Leadership Associate



Spencer Vogt
Board Leadership Data Analyst



Lindsey Wooton
Administrative Specialist



YOUR 2022 NASB AFFILIATES

Leadership

Innovation

Vision

Engagement

#liveNASB

#weLIVEhere



1,960,000 Nebraskans 324,000 Students 1,700 Locally Elected School Board Members 260 Member Districts/ESUs ONE NEBRASKA

YOUR 2022 PLATINUM AFFILIATES

<http://members.nasbonline.org/index.php/affiliate-member>

YOUR 2022 GOLD AFFILIATES

ACCOUNTING

Watts and Hershberger, P.C.
 Jim Watts
 402-483-7512 - jw1cpa@aol.com - <https://gowh.com/>
 (CPA, Accounting)

ARCHITECTS

BCDM Architects
 Pat Carson - 402-384-6422
pcarson@bcdm.net - www.bcdm.net
 (Creating environments that form people)
 * PLATINUM LEVEL AFFILIATE

BVH Architecture
 Cleve Reeves - 402-475-4551
creeves@bvh.com - www.bvh.com
 (A design-centered critical practice embracing a creative and collaborative process to design architecture that enhances the community in which it serves.)
 * PLATINUM LEVEL AFFILIATE

ARCHITECTS

Clark & Enersen
 Steve Miller - 402-477-9291
steve.miller@clarkenersen.com - www.clarkenersen.com
 (From the very beginning, partnership has defined us.)
 * PLATINUM LEVEL AFFILIATE

CMBA Architects
 Jim Brisnehan - brisnehan.j@cmbaarchitects.com
 Troy Keilig - keilig.t@cmbaarchitects.com
 Courtney Koch - koch.c@cmbaarchitects.com
 308-384-4444 - www.cmbaarchitects.com
 (Architecture, Master Planning, Interiors, Bond Assistance/Community Engagement)
 * PLATINUM LEVEL AFFILIATE

Carlson West Povondra Architects
 Jamie Eckmann - 402-551-1500
jeckmann@cwparchitects.com - www.cwparchitects.com
 (Architecture, planning, feasibility studies)
 * GOLD LEVEL AFFILIATE

ARCHITECTS

DLR Group
 Vanessa Schutte - 402-393-4100
vschutte@dlrgroup.com - www.dlrgroup.com
 (Architecture, engineering, Ed. facility planning)

AWARDS & PLAQUES

Awards Unlimited
 Tim Moravec - 402-474-0815
tmoravec@awardsunlimited.com
www.awardsunlimited.com
 (Trophies, awards, plaques, etc.)

BUILDING CONTROLS/SERVICES

Control Management Inc.
 Nathan Haug - 402-571-9454
nathan@cmiomaha.com - www.cmiomaha.com
 (Building Automation, Security and Energy Optimization for New and Existing Systems)

YOUR 2022 NASB AFFILIATES

Leadership

Innovation

Vision

Engagement

#liveNASB

#weLIVEhere

CONSULTING

Akagi Consulting LLC
Mark Akagi - markakagi3@gmail.com

CONSTRUCTION SERVICES

BD Construction
Marsha Wilkerson - 308-234-1836
mwilkerson@bdconstruction.com - BDconstruction.com
(Construction Management at Risk and as Agent, Facility Planning, Site Selection, Pre-bond Community Education, Stakeholder Engagement)
*GOLD LEVEL AFFILIATE

Boyd Jones Construction
Emily Bannick - 402-550-1808
ebannick@boydjones.biz - www.boydjones.biz
(Construction Mgmt, Pre-Bond, Pre-Construction, Facility Evaluation, Early Stage Planning)
* PLATINUM LEVEL AFFILIATE

Cheever Construction
Douglas Klute - 402-477-6745
dklute@cheeverconstruction.com
www.cheeverconstruction.com
* GOLD LEVEL AFFILIATE

Kingery Construction Co
Rod Berens - 402-465-4400
rodb@kccobuilders.com - www.kccobuilders.com
(Design-Bid-Build, Design-Build, Construction Mgmt, General Contractor, Pre-Bond/Pre-Construction)
* GOLD LEVEL AFFILIATE

MCL Construction
Heather Fredrick - 402-339-2221
haf@mcconstruction.com - www.mcconstruction.com
(Navigating the entire construction process)
* GOLD LEVEL AFFILIATE

Nemaha Sports Construction Inc
Don Traska - 402-434-5488
don.traska@nemaha.net - www.nemaha.net
(Athletic Fields, Parks & Recreation, Hardscapes)
* GOLD LEVEL AFFILIATE

Tetrad Property Group
Cassie Paben - 402-580-2355
cpaben@tetradpropertygroup.com - tetradpropertygroup.com
(Owner's Representative, Facility Planning, Site Selection, Pre-Bond Community Education, Stakeholder Engagement, Facility Management)

W. A. Klinger
Matt Thompson - 712-233-3233
mthompson@waklinger.com - www.waklinger.com
(Pre-Construction, Construction Management, Design-Build, and General Contracting Services.)

DATA SECURITY, VIDEO & COMMUNICATIONS

Filament Essential Services
Lisa Lewis - 402-479-6661
lisal@fes.org - www.filamentservices.org
(SOCS websites+apps, Marketing/Branding/Video, Data, Filament Essential Services is a new division of FES)
* PLATINUM LEVEL AFFILIATE

DESIGN BUILD

Ayars & Ayars, Inc.
Darl Naumann - 402-435-8600 - 402-570-9214
dnaumann@ayarsayars.com - www.ayarsayars.com
(Design-build leader focused on creating opportunities by building beneficial relationships, processes, and projects)
*GOLD LEVEL AFFILIATE

ENERGY SERVICES

Community Building Solutions
Jacob Hurla - 785-580-3014
jhurla@communitybuildingsolutions.com
(Providing a cost-effective avenue for school districts to address outdated equipment, resolve comfort challenges, and reduce energy and maintenance costs. Serving underserved rural communities cost-effectively is the core of our mission.)
* PLATINUM LEVEL AFFILIATE

Facility Advocates
Dave Raymond - 402-206-8777
draymond@facilityadvocates.com
www.facilityadvocates.com
(Building Construction & Energy Services)
* GOLD LEVEL AFFILIATE

Navitas
Nick Rosenberry - 402-840-0370
nrosenberry@navitas.us.com - https://navitas.us.com/
(Energy Savings, Building Construction, Energy Management, Guaranteed Results)
* GOLD LEVEL AFFILIATE

Optimized Systems
Peter Larson - 605-212-0783
peter.larson@optimized-systems.com
www.Optimized-Systems.com
(Energy Optimization, Energy Management, Commissioning, Metering, Energy Studies, Mechanical System Assessments, Troubleshooting)
* GOLD LEVEL AFFILIATE

TRANE
Matt Foertsch - 402-596-8007
mfoertsch@trane.com - www.trane.com/omaha
(Building Construction & Energy Services. A global provider of indoor comfort systems)
* GOLD LEVEL AFFILIATE

FINANCIAL SERVICES

Ameritas Investment Company
Jennifer Kobza - 402-214-2118
jennifer.kobza@ameritas.com - (Public Finance)
* PLATINUM LEVEL AFFILIATE

D.A. Davidson & Co.
Paul Grieger - 402-392-7986 - pgrieger@dadco.com
Cody Wickham - 402-392-7989 - cwickham@dadco.com
Andy Forney - 402-392-7988 - aforney@dadco.com
www.dadavidson.com
(Bonds/Election Services, Lease Purchase)
* PLATINUM LEVEL AFFILIATE

FINANCIAL SERVICES

First National Capital Markets
Tobin Buchanan - 308-352-8328 - tbuchanan@fnni.com
Carl Dietz - 308-289-3920 carldietz@fnni.com
Matt Fisher - 308-380-3831 mfisher@fnni.com
www.fncapitalmarkets.com
(Public Finance, Election Guidance)
* GOLD LEVEL AFFILIATE

Nebraska Liquid Asset Fund - NLAFF
Barry Ballou - 402-705-0350
balloub@pfmam.com - www.NLAFFpool.org
(Liquid Asset Fund, financing programs)
* PLATINUM LEVEL AFFILIATE

Piper Sandler
Jay Spearman - 402-599-0307
jay.spearman@psc.com
(Financing for Capital Construction Products, Bonds, Refunding Bonds, Notes, NASB Lease Purchase)
* PLATINUM LEVEL AFFILIATE

FOOD SERVICE

Lunchtime Solutions
Susan Gracey - 402-984-4546
s.gracey@lunchtimesolutions.com
www.lunchtimesolutions.com
(Progressive Food Service Management)
* GOLD LEVEL AFFILIATE

Opaa! Food Management of Nebraska
Greg Frost - 816-210-9359
gfrost@opaafod.com - www.opaafod.com
(Contract Food Service Management)

FUNDRAISING

Omaha Public Schools Foundation
Toba Cohen-Dunning
402-502-3003 - toba.cohendunning@ops.org
https://omahapublicschoolsfoundation.org
(The Omaha Public Schools Foundation enriches students' lives by funding opportunities for success.)

INSURANCE SERVICES

American Fidelity
Stacey Anderson
402-432-2251 - Stacey.anderson@americanfidelity.com
www.americanfidelity.com/nebraska
(Solutions built for the education community)
* PLATINUM LEVEL AFFILIATE

Blue Shield of Nebraska
Cortney Ray - 402-458-4823
cortney.ray@nebraskablue.com
www.nebraskablue.com
(Group health insurance)
* GOLD LEVEL AFFILIATE

National Insurance Services
Steve Ott - 800-627-3660
sott@nisbenefits.com - www.nisbenefits.com
(Group LTD, Life, Vision, Special Pay Plans, HRA's)

YOUR 2022 NASB AFFILIATES

Leadership

Innovation

Vision

Engagement

#liveNASB

#weLIVEhere

INSURANCE SERVICES

Public Risk Management
Sheri Shonka - 402-884-3751 - 877-649-4612
sheri.shonka@prmne.com - www.alicap.org
(ALICAP, Insurance services)
* PLATINUM LEVEL AFFILIATE

LEGAL SERVICES

Mueller Robak, LLC
William Mueller - 402-434-3399
mueller@muellerrobak.com
(Lobby firm)

MENTORING

TeamMates Mentoring
Hannah Miller - 319-610-8538
hannah@teammates.org - www.teammates.org
(Together we transform lives)
* Silver Level Affiliate

PLAYGROUND/SCOREBOARDS/SURFACING

Creative Sites, LLC
Julie Kutilek - 402-614-4606 - 800-266-1250
julie@creativesitesllc.com
(Playground equipment and site furnishings)
* GOLD LEVEL AFFILIATE

Crouch Recreation
Eric Crouch - 402-496-2669
eric@crouchrec.com - www.crouchrec.com
(Playgrounds, Shelters, Scoreboards, Safety Surfacing & Site Amenities Manufacturers Rep)
* PLATINUM LEVEL AFFILIATE

Fisher Tracks, Inc.
Jordan Fisher - 800-432-3191 - 515-432-3191
jfisher@fishertracks.com - www.fishertracks.com
(Installation, Refurbishment & Design Build of All-Weather Running Tracks)

Outdoor Recreation Products
Don Wilson - 402-289-0400 - don@outdoorrec.net
www.outdoorrecreationproducts.com
(Your choice for a reputable playground and splashpad company serving Nebraska)
* GOLD LEVEL AFFILIATE

SAFETY & SECURITY SERVICES

One Source The Background Check Company
Neal Josten - 402-933-9999
njosten@onesourcebackground.com
www.onesourcebackground.com
(Employment, Volunteer, Contractor Screening)
* GOLD LEVEL AFFILIATE

TECHNOLOGY CONSULTING

PRISM advisors
Jason Richards - 402-593-8911
jprichards@prism-advisors.com
www.prism-advisors.com
(PEOPLE, PROCESS & SYSTEMS. IT strategic planning and project management through RFP to implementation)

TECHNOLOGY/SOFTWARE

JMC
Shelby Valkos - 800-524-8182
shelby@jmcinc.com - https://www.jmcinc.com/
(Smart software for even smarter schools)
* PLATINUM LEVEL AFFILIATE

Midwest Alarm Services
Mike Wells - 402-331-6111 - 402-474-3737
Mike.Wells@mw-as.com
(Life Safety Systems provider)
* GOLD LEVEL AFFILIATE

Sparq Data Solutions
Craig Caples - 402-423-4951
ccaples@sparqdata.com - www.sparqdata.com
(Paperless Board Meetings, Teacher Negotiations, Public Document Management, Document Imaging & Scanning, Online Policy)
* PLATINUM LEVEL AFFILIATE

THERAPY SERVICES

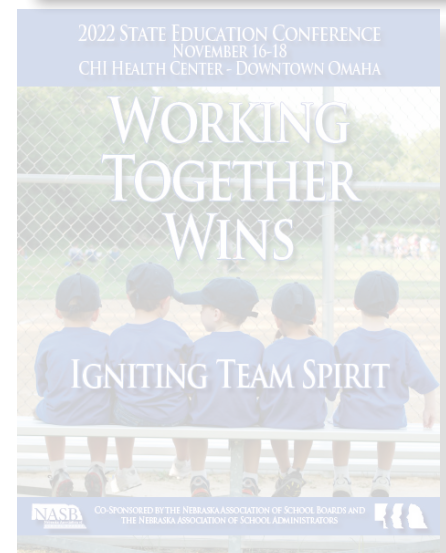
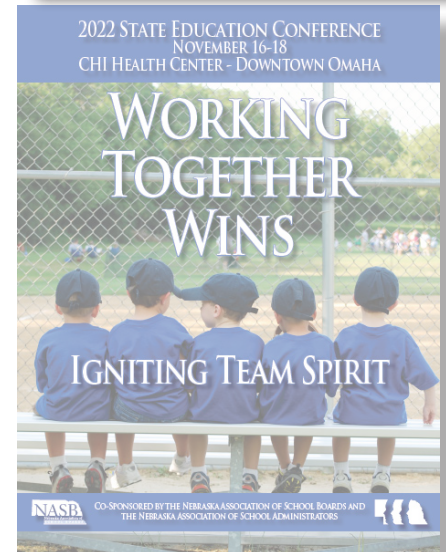
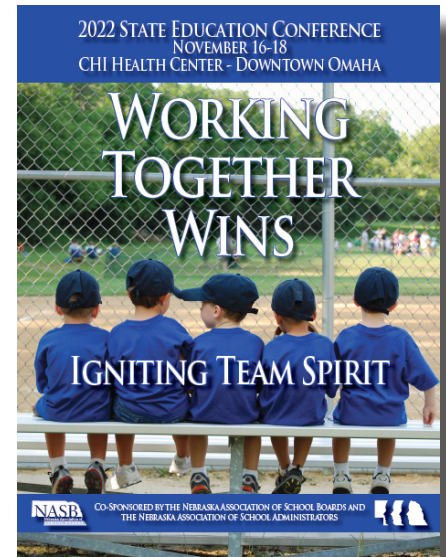
Central Nebraska Rehabilitation Services
Mary Walsh-Sterup - 308-675-1853 ext. 3222
mary@cnrehab.com - www.cnrehab.com
(Providing PT, OT and Speech therapy in the school system)

TRANSPORTATION

Cornhusker International
Russ Folts - 402-466-8461 ext 206
russ.folts@cornhuskerinternational.com
www.cornhuskerinternational.com
(With six locations across Nebraska, Cornhusker International offers your best choice in new and pre-owned School Buses, Compliant Activity Buses, plus full parts and service for all makes and models)
* GOLD LEVEL AFFILIATE

Master's Transportation
Mariya Goodbrake - 800-783-3613
mgoodbrake@masterstransportation.com
www.masterstransportation.com
(Your trusted source for safe, reliable, and innovative group transportation solutions.)
* GOLD LEVEL AFFILIATE

BOARD NOTES IS PUBLISHED ON A MONTHLY BASIS AS A MEMBER SERVICE. ADVERTISING IS AVAILABLE IN EVERY ISSUE. TO ADVERTISE OR BECOME AN AFFILIATE, PLEASE CONTACT MATT BELKA FOR FURTHER INFORMATION. ARTICLES OR ADVERTISING CONTAINED HEREIN DO NOT NECESSARILY REPRESENT THE VIEWS OR POLICIES OF NASB.





1311 STOCKWELL STREET
LINCOLN, NE 68502
WWW.NASBONLINE.ORG

RETURN SERVICE REQUESTED

NASB BOARD NOTES



A MONTHLY PUBLICATION FROM THE NEBRASKA ASSOCIATION OF SCHOOL BOARDS



Leadership Innovation Vision Engagement #liveNASB #weLIVEhere

1,960,000 Nebraskans 324,000 Students 1,700 Locally Elected School Board Members 260 Member Districts/ESUs ONE NEBRASKA

TWO BOARDS RECEIVE PRESIDENT'S BOARD AWARD ... ELEVEN OTHERS RECEIVE THE BOARD OF EXCELLENCE AWARD

38 SBMs SEE THEIR NAMES ETCHED IN STONE

AT THE BOARD TABLE: BOARD CALENDAR AGENDA ITEMS FOR YOUR NOVEMBER MEETINGS

STATE EDUCATION CONFERENCE UPDATE ... CHOOSING YOUR BOARD'S DELEGATE

LEADERSHIP CHOICES OF EFFECTIVE ELECTED OFFICIALS

NASB'S CANDIDATE RESOURCES LEADING UP TO NOV 8

SAMSUNG'S SOLVE FOR TOMORROW STEM COMPETITION

THIS MONTH IN ...

... AND MUCH MORE!

The Nebraska Association of School Boards provides programs, services and advocacy to strengthen public education for all Nebraskans. Learn more at www.NASBonline.org



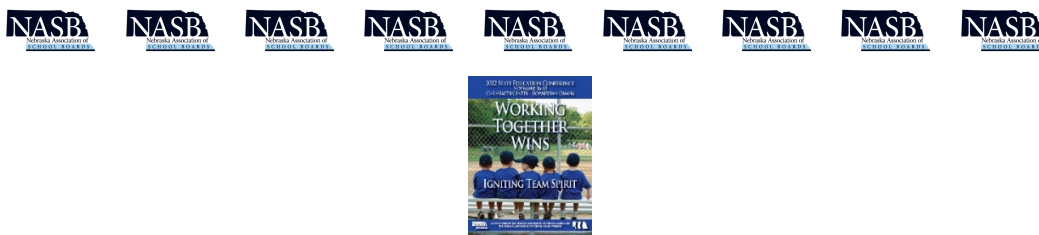
NASB Monthly Update for Board Meeting Agenda Item

November 2022

Monthly Agenda Video Updates

<http://members.nasbonline.org/index.php/news-resources/videos>

(www.NASBonline.org - News & Resources – Video Library)



State Conference Info & Registration

<http://members.nasbonline.org/index.php/state-education-conference>

(www.NASBonline.org - Events – State Education Conference)



Latest 'Board Notes' – Monthly Newsletters

(www.NASBonline.org - News & Resources - Board Notes)

- *Two Boards Receive President’s Board Award ... Eleven Others Receive the Board of Excellence Award*
- *38 SBMs See Their Names Etched in Stone*
- *At The Board Table: Board Calendar Agenda items for your November Meetings*
- *State Education Conference Update ... Choosing Your Board’s Delegate*
- *Leadership Choices of Effective Elected Officials*
- *NASB’s Candidate Resources Leading Up to November 8*
- *Samsung’s Solve for Tomorrow STEM Competition*
- *... And Much More!*



YOUR 2022 ADVOCACY HANDOUT IS NOW POSTED

In Preparation for the 2022 Delegate Assembly – 8:00 AM, Friday, November 18 in Omaha

<http://members.nasbonline.org/index.php/advocacy-handbook>

(www.NASBonline.org – Government Relations – NASB Advocacy Handbook)

Proposed changes to the bylaws, standing positions and legislative resolutions for your review prior to the Delegate Assembly. To better prepare you and your board’s voting representative for the Delegate Assembly, please download, review, and bring this Handout with you to Omaha.

“NASB Update – Annual Board Calendar Summary”

View the full detailed calendar at: <http://members.nasbonline.org/index.php/resources>

(www.NASBonline.org – Board Leadership – Resources)

As a board, some items you should doing, or have on the monthly agenda include:

MISSION, VISION & GOALS

- Strategic Plan Update; District Goals Update

POLICY GOVERNANCE

- Review, update, and adopt policy

DISTRICT/ESU RESOURCES (BUDGET)

- Review District Audit Report

BOARD-SUPERINTENDENT RELATIONS

- Distribute the superintendent evaluation to be completed by each board member. *NASB Online Survey System, direct the Association to distribute links to each individual board member to complete the superintendent evaluation. Note: Review board policy and superintendent contract to ensure the board is meeting the directives of both documents. Reminder to Superintendents and Board Members:
 - review the current superintendent contract for language pertaining to the superintendent reminder in writing to evaluate and discuss contract renewal
 - review deadline dates for the renewal of the superintendent contract
 - post proposed contract and Schedule D on website per Superintendent Transparency Act

REPORTS

- November 8, 2022, Statewide General Election - Register newly elected board members for State Conference and the Conference Board
- Mentor/Mentee Session Thursday, November 17, 2022, at 7:15 a.m.
- Board Committees; Superintendent; Administrators

BOARD LEADERSHIP DEVELOPMENT

- Review and discuss Board Governance Standard IX. Professional Development
- NASA/NASB State Education Conference
- NASB Delegate Assembly



NASB's Video Resources

<http://members.nasbonline.org/index.php/news-resources/videos>

(www.NASBonline.org – News & Resources – Videos)

Legal Resources, NASB's Live & Learn Series, Member Zoom's, Q&A's with the Governor and Commissioner Blomstedt, EHA Updates, Advocacy breakdowns, Monthly Board Agendas, and MUCH more!

Networking & Events ... Register Now

<http://members.nasbonline.org/index.php/events>

(www.NASBonline.org – Events)

All Dates & Locations Tentative & Subject to Change

State Education Conference

<http://members.nasbonline.org/index.php/state-education-conference>

November 16-18 – Omaha

**Sparq Open House ... Tuesday, November 15th – 7:00 to 11:00 PM*

New Board Member Workshops

<http://members.nasbonline.org/index.php/new-board-member-workshops>

December 5 – Gering

December 6 – North Platte

December 7 – Kearney

December 8 – York

December 13 – La Vista

December 14 – Norfolk

Legislative Issues Conference

<http://members.nasbonline.org/index.php/legislative-issues-conference>

January 22-23, 2023 – Embassy Suites Lincoln

NASB Board President Retreats

<http://members.nasbonline.org/index.php/president-retreat>

January 29-30, 2023 – York

February 5-6, 2023 - Ogallala



Advocacy

<http://members.nasbonline.org/index.php/government-relations>

(www.NASBonline.org – Government Relations)

NOW ON NASB'S GR PAGE

WATCH: NASB Member Virtual w/ Gubernatorial Candidates Pillen & Blood

WATCH: State Board of Education Candidate Q&A's w/ all 8 Candidates

LB 644 – The Postcard Bill – What You Need to Know

2022 Legislative Candidate Questionnaires

<http://members.nasbonline.org/index.php/2022-legislative-candidate-questionnaire>

Previous Legislative Meet & Greets include:

District 42 Legislative Candidate Jacobson - North Platte

District 44 Legislative Candidate Ibach - Lexington

District 34 Legislative Candidate Lippincott - Central City

District 36 Legislative Candidate Holdcroft - Springfield

District 24 Legislative Candidate Hughes - York

District 36 Legislative Candidate Lauritsen - Papillion

District 48 Legislative Candidate Lease II - Scottsbluff

District 40 Legislative Candidate DeKay - Plainview

District 18 Legislative Candidate Young - Elkhorn
District 24 Legislative Candidate Hotovy - Stromsburg
District 48 Legislative Candidate Hardin – Scottsbluff
District 16 Legislative Candidate Petersen - Blair

All Dates & Locations Tentative & Subject to Change

NASB does not endorse candidates and does not make recommendations to members, or anyone, on whom to support for election. NASB may, from time to time, provide opportunities for candidates for elected office to meet with or communicate with its membership. Any NASB event allowing candidates for office to meet or communicate with its membership should not be considered a direct or passive endorsement of any candidate.



NASB Member Virtuals

<http://members.nasbonline.org/index.php/nasb-member-virtuals>

(www.NASBonline.org – Events – NASB Member Virtuals)

- WATCH: Gubernatorial Candidates Q&A w/ Blood & Pillen
- Previous Member Virtuals Available to Watch Include:
 - 2022 Legislative Recap & Look Ahead
 - Tough Times & Tough Meetings: The Board’s Role in Navigating Hot Button Issues
 - NASB Member Virtuals w/ Commissioner Blomstedt & Dr. Jeffrey Gold of UNMC, Bryce Wilson of NDE on Cares Act Funds Q&A for School Boards, and More ...



Follow NASB on twitter at www.twitter.com/NASBonline using the hashtag #liveNASB
and on Facebook at www.facebook.com/NASBonline

Watch all of the NASB videos at <http://members.nasbonline.org/index.php/news-resources/videos>

(www.NASBonline.org – News & Resources – Videos)

To see a quick glimpse at the various items the NASB is involved in, check out pages 10 & 11 each month in the Board Notes newsletter for “This Month In ...” To access the latest newsletter, click here:

<http://members.nasbonline.org/index.php/news-resources/board-notes>

(www.NASBonline.org - News & Resources - Board Notes)

November Board Report
Mr. Jaxn Kobza
Technology Director

Infrastructure

- Working on getting an idea of what we have in our network and creating a solid inventory of what we have.

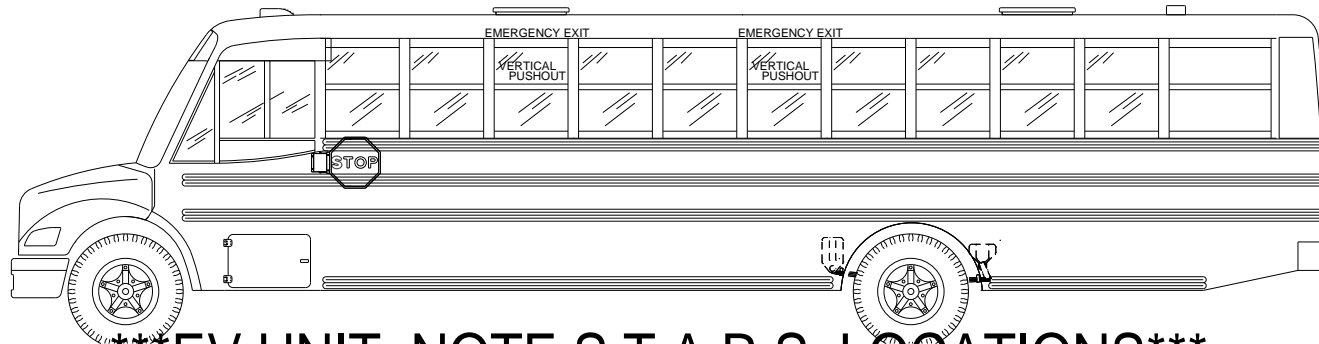
Technology Projects

- Working on Building a 7 year plan for all technology rotations and system implementations.
- Getting the new website migrated and ready to go. Should be ready to be operational mid January.

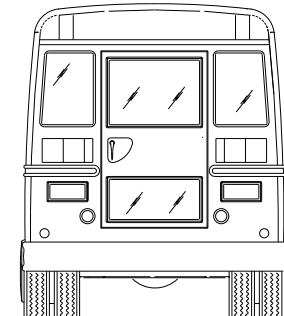
Concerns

- Working on securing our network and meeting the requirements for cyber insurance.
- Still waiting for our servers to be built to start that project.

SEATING CAPACITY: 71+ DRIVER

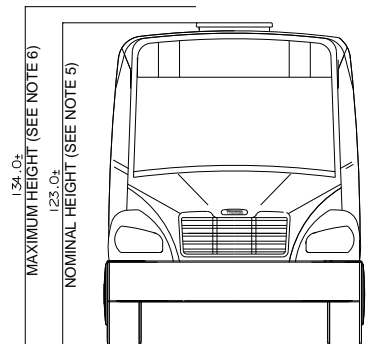
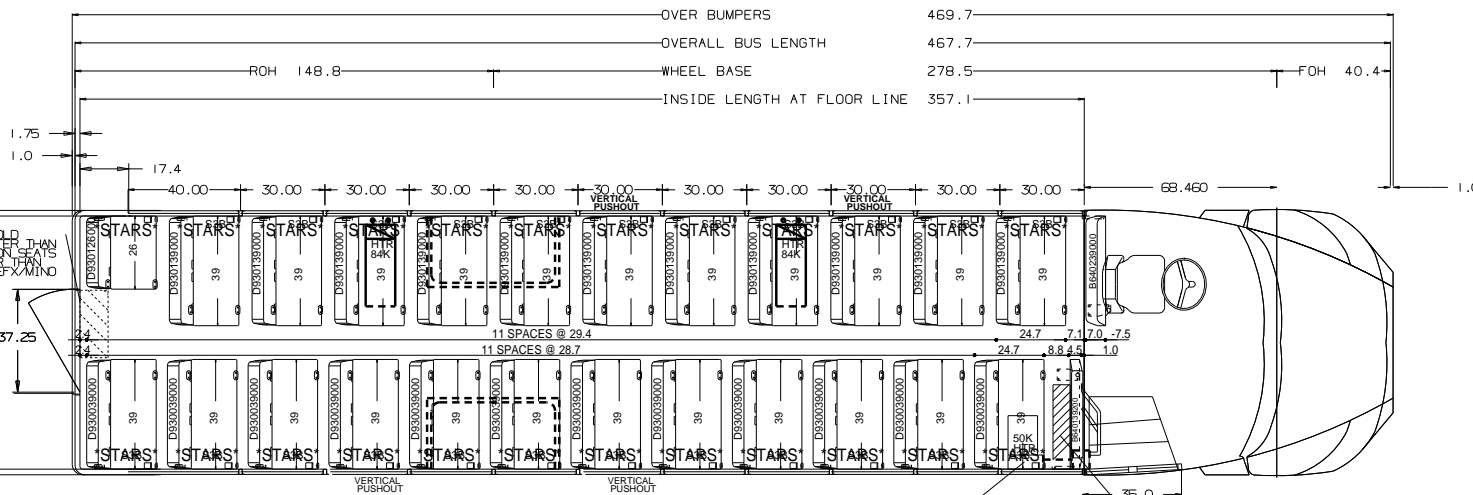


*****EV UNIT: NOTE S.T.A.R.S. LOCATIONS*****

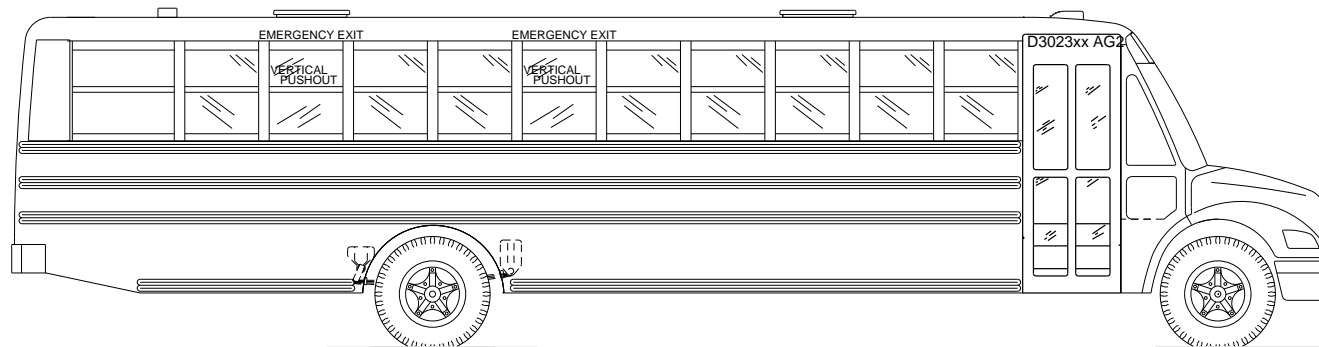


CAUTION! - LEFT SIDE BARRIER IS NOT IN STANDARD LOCATION, SEE SEATING PLAN.

CAUTION! - RIGHT SIDE BARRIER IS NOT IN STANDARD LOCATION, SEE SEATING PLAN.



UNDERBODY BOX WITH HEATER DIM TO FIRST SEAT MUST BE GREATER THAN 6.0



Model: Saf-T-Liner C2
Quote Number: 392659
Locality: NE

ALL DIMENSIONS ARE FOR REFERENCE ONLY

GENERAL NOTES

- SOME ITEMS, SUCH AS CV MIRRORS, ROOF LUGGAGE RACKS, AND OTHER ITEMS, ARE SHOWN IN ONE VIEW ONLY FOR CLARITY.
- THIS DRAWING IS A REPRESENTATION ONLY AND MAY NOT HAVE ALL ITEMS REQUIRED. PLEASE REFER TO ORDER!
- THE CLEARANCE BETWEEN BOTTOM OF BUS OR BOTTOM OF UNDERBODY COMPARTMENTS AND GROUND WILL VARY ACCORDING TO TIRE SIZE, BUS LOAD, AND SUSPENSION TYPE.
- THE MAXIMUM WIDTH AT BELT LINE OVER GUARD RAILS IS 96.
- THE NOMINAL BUS HEIGHT IS BASED ON A STANDARD BODY AND LARGEST TIRE SIZE.
- THE MAXIMUM BUS HEIGHT IS BASED ON BODY WITH OPTIONS SUCH AS A/C UNITS, STROBE LIGHT, LARGEST SUSPENSION ETC.
- OVER BUMPER DIMENSION DOES NOT TAKE INTO ACCOUNT OPTIONS THAT MAY ADD TO THE TOTAL LENGTH OF THE BUS, SUCH AS MIRRORS, LIGHTS AND CROSSING ARMS.

THIS DRAWING AND ALL INFORMATION PROVIDED WITH IT ARE THE PROPERTY OF THOMAS BUILT BUSES, INC. ANY REPRODUCTION OR DISTRIBUTION OF THIS MATERIAL OR ANY PART WITHOUT WRITTEN PERMISSION OF THOMAS BUILT BUSES, INC. IS STRICTLY PROHIBITED. COPYRIGHT THOMAS BUILT BUSES, INC.

THOMAS BUILT BUSES, INC			
HIGH POINT, NC			
TITLE PLAN AND ELEVATION BODY 340TS			
DRN:11-04-22 BY:T. Dean		SIZE	DWG. NO.
SCALE 3/8"=12"		S	866930



2024 Freightliner – Thomas C2 ‘Jouley’

71 Passenger Capacity

PRICE.....\$375,000.00

Quote Valid Until: November 20, 2022

Approximate Delivery: 8-9 months from order

Engine: Proterra Electric Motor 120 KW (2 Proterra 110KW batteries)

Transmission: Eaton 2 Speed Electric

Brakes: **Air ‘Disc’**

Mileage: NEW

ADDITIONAL SPECIFICATIONS:

-Air conditioning - driver’s dash. (Thomas is the only OEM that does this from the factory)

-Axle/front: 10,000 lb. set back

-Axle/rear: 23,000 lb.

-Barriers: (2) 39” with proform fireblock covering

-Batteries: Dual (2) Alliance, 1500 CCA

-Brakes: Air disc with heated air dryer and heated moisture ejector on wet tank

-Cell Phone Charger for Driver

-Cruise Control

-Entrance Door: Air operated with push button in dash

-Fenderettes: Mounted over rear wheels (steel)

-Floor Covering: 5/8” plywood covered with heavy duty vinyl covering

-Glove Box and Storage: Large glove box above driver and floor mounted clip board holder

-GVWR: 33,000 lbs

-Heaters/Defrosters:

-93,000 BTU left front heater/defroster

-53,000 BTU stepwell heater

-Dual (2) rear 84,000 BTU heaters

-Bergstrom heater booster pump

-(2) defroster fans mounted above windshield

-Headroom: 78” interior height

-Horns: Dual electric with center steering wheel activation

-Insulation Package: Acoustic ceiling above driver

-Lettering: RAYMOND CENTRAL PUBLIC SCHOOLS, Unit numbers as requested

-Lights: LED headlights with daytime running lights, driver’s dome light on separate switch, dual row of dome lights on separate switch. All interior dome lights are LED

LED Clearance/Marker- red rear/amber rear, back-up- clear, stop/tail- red.

LED Marker/Cluster-Per FMVSS .

LED side mounted turn signals on fender and side panels

LED eight lamp warning system flush mounted.

LED Stepwell light

LED Strobe Light

-Manuals: Printed operator's maintenance manual

-Mirrors: Open View heated/self-defrosting rear view mirrors with Remote Control

-Heated Cross-over mirrors

-Mud Flaps: Front and Rear

-Paint: Yellow w/ black trim. Interior light gray. Undercoated chassis

-Roof Painted White

-Parcel Racks: Interior tubular type with padding on ends

-Radio: AM/FM with PA and 6 roof mounted speakers

-Roof Hatches: 2 installed in self-sealing pre-cut panels

-Rub Rails: Four (4) exterior side rub rails located at window level, seat level, floor, level, and bottom skirt. Sealed with Saf-T-Bond structural adhesive.

-Safety Equipment: (2) Nebraska first aid kits, one mounted front and one at rear of bus. 5 lb chemical type fire extinguisher, moisture proof body fluid clean up kit, triangle safety kit.

-Safety Solenoid Switch: Single switch for complete shutdown of all heaters and radio

Seat/Driver: National high back adjustable **'Heated' Air Ride** seat with three point retractable shoulder harness, dual armrests, and adjustable lumbar support.

-Seats/Passenger: (23) 39" & (1) 26" passenger seats covered with 42 oz. Proform leatherette fire block material and pivot cushion for cleaning. Powder-coated frames

-Steering: Tilt steering wheel

-Stop Arm: Highly reflective and equipped with high intensity LED lights

-Suspension/Front: 10,000 lb. soft ride springs

-Suspension/Rear: 23,000 lb. Air Ride

-Tires: Michelin 11R22.5 w/ mud & snow tread on rear

-Tow Hooks: Front and rear

-Ventilator: Static type, non-closable

-Wheelbase: 279"

-Wheels: 22.5 x 8.25 10 hole hub mounted – painted black

-Windows: All side and rear passenger windows tinted
4 push/out windows (2 per side)

-Windshield: Automotive style one piece, bonded, and curved, slanted to reduce glare and breakage and provide maximum vision. The tinted safety plate laminated glass provides 3362 square inches of windshield area.

-WARRANTY:

Thomas/Freightliner comes standard with a 3 year/50,000 mile bumper to bumper warranty....the best in the industry!

Base: Limited 3 year bumper to bumper

Poterra Batteries: 8 years/175,000 miles

Body: Limited 5 years on body

Power Train: Limited 5 year/100,000 miles

Axles: Limited 5 years/unlimited includes king pins

ESTIMATE

Proven Property Maintenance LLC

1634 County Road A
Ceresco, NE 68017
(402) 413-9776



To:
Raymond Cental Elementary (Jared Shanahan)
114 S Third
Ceresco, NE 68017

Estimate # 1369
Estimate Date 09/29/2022
Total Amount \$457.50

Item	Quantity	Price	Tax1	Tax2	Line Total
Snow Removal- Commercial	1.0	\$270.00 / Storm			\$270.00
Ice Melt	250.0	\$0.75 / Pound			\$187.50
Subtotal:					\$457.50
Tax:					\$0.00
Past Due Amount:					\$0.00
Total Amount:					\$457.50

Notes

Service parameters are as follows: snow will be removed from all marked areas anytime the snow reaches 2 inches. In the event of freezing rain or snow less than 2 inches we will come and spread ice melt on all marked surfaces. If just ice melt is required with no snow removal it will result in a \$50 trip charge plus the cost of ice melt



Jared Shanahan <jared.shanahan@rcentral.org>

Snow removal Valparaiso RC

1 message

Richard Haxton <haxtongrading@gmail.com>
To: Jared.shanahan@rcentral.org

Wed, Oct 12, 2022 at 4:50 PM

Hey Jared,

I should be able to clear the lot for \$350.00 per push. That is to be done before school opens and the administration arrives. This includes snow removal after 2 inches of snow have accumulated. If it needs to be plowed a second time after the initial clearing ill leave that up to you and the staff to notify me ie: it continues snowing after 7am and needs cleared again at noon. I would like to meet at the school with you prior to snow fall to walk the premises and make sure we have everything you want cleared marked and highlighted on a map. I would also like to determine an area to pile snow if need be.

I was waiting to give you the bid until I had spoken with my insurance company, sorry for the delay. They still haven't called back, but I am assuming everything will be covered.

Thanks for your time and patients!

-Rick Haxton
Haxton Excavating and Grading LLC
132 n. cedar st. Valparaiso NE , 68065
402-217-9616

Rating Scale: 1-6

Standard : Mission, Vision & Goals	5.50
Standard II: Policy	5.48
Standard III: Budget Planning & Management	5.64
Standard IV: Educational Leadership	5.29
Standard V: Organizational & Cultural Leadership	5.53
Standard VI: Community Relations	5.41
Standard VII: Professional Leadership	5.67
Standard VIII: Board-Superintendent Relations	5.58