

RAYMOND CENTRAL PUBLIC SCHOOLS - DISTRICT #55-0161
BOARD OF EDUCATION REGULAR MEETING, WEDNESDAY, SEPTEMBER 13, 2017
- 7:00 PM
RAYMOND CENTRAL JR-SR HIGH SCHOOL - MUSTANG ROOM
1800 WEST AGNEW ROAD
RAYMOND, NE 68428-9783

AGENDA

1. Budget Hearing

SCHOOL DISTRICT BUDGET FORM LC-2
2017/18

	District Number: 55-0161-000	
	District Name: RAYMOND CENTRAL PUBLIC SCHOOLS	
	Class: 3	

Instructions

2017/18 Section A: Calculation of Total Allowable Budget Authority		
Certified Budget Authority	A-101	7,735,811
Access to Prior Year's Unused Budget Authority [Maximum Amount: \$14,979]	A-355	0
Total Adjusted Budget Authority	A-361	7,735,811
Total Allowable Budget Authority	A-780	7,735,811

The School District Budget Spreadsheet provided by the Auditor of Public Accounts may be uploaded here.

MAKE SURE THE SPREADSHEET IS CLOSED BEFORE YOU UPLOAD.

No file chosen

Excel file ONLY - 20MB limit
Update the budget data any time a change is made to the Budget Spreadsheet.

2017/18 General Fund Budget of Disbursements & Transfers and Unused Budget Authority		
2017/18 General Fund Budget of Disbursements & Transfers	B-100	9,523,879
2017/18 Special Grant Funds	B-110	314,098
2017/18 Special Education Budget of Disbursements & Transfers	B-120	1,346,239
2017/18 General Fund Lid Exclusions	B-130	127,731
Total Adjusted General Fund Budget of Disbursements & Transfers	B-140	7,735,811
2017/18 Unused Budget Authority	B-150	0
Update the LC2 System budget data any time a change is made to your School District Budget Spreadsheet.		
Total Unused Budget Authority		
2016/17 Total Unused Budget Authority	B-160	14,979
2017/18 General Fund Expenditure Growth	B-162	0
Adjusted Unused Budget Authority	B-165	14,979
2017/18 Unused Budget Authority	B-170	0

Total Unused Budget Authority
(Carries forward into future school fiscal years)

B-175

Did you hold a successful special election for additional **BUDGET** Authority?
(Not a levy override)

B-180 Yes No

2017/18 Allowable Reserves and Total Reserves

2017/18 Applicable Allowable Reserve Percentage	C-170	<input type="text" value="35.00"/>
2017/18 Total Allowable Reserves	C-180	<input type="text" value="3,333,358"/>
<hr/>		
2017/18 General Fund Necessary Cash Reserve	C-300	1,800,000
2017/18 Depreciation Fund Total Requirements	C-310	1,330,452
2017/18 Employee Benefit Fund Necessary Cash Reserve	C-320	0
Total Reserves	C-340	<input type="text" value="3,130,452"/>

Recalculate LC-2 after making changes to individual lines (*Form not saved*)

Save a copy of the LC-2 without submitting to NDE (*Save before moving to another page*)

Submit completed LC-2 to NDE.

You can upload your Budget Documentation on the next screen.
Mailed or emailed budgets will not be accepted by NDE.

Log Out of LC-2 system (*If you log out without saving and/or submitting your data, changes will be lost.*)

SCHOOL DISTRICT BUDGET FORM LC-2
2017/18

District Number: 55-0161-000

District Name: RAYMOND CENTRAL PUBLIC SCHOOLS

Class: 3

Special Grant Fund List

Return to LC-2

Total Special Grant Funds 3.00 314,098

[Save Grants](#) If you made any changes to the Special Grant Fund List, click here before returning to the LC2.

[Print Grants](#)

* Items denoted with a * must be approved by the State Board of Education.
Email your request for approval of these items to:
Bill Biven at bill.biven@nebraska.gov

Grant Description	Line	Amount
Adult Basic Education Grants	1.01	0
Adult Education - English Literacy/Civics Grants	1.02	0
Adult Education Volunteer Coordination Program	1.03	0
Advance Placement Test Fee Reduction Program Grants	1.04	0
Annenberg Foundation Grants (Rural Challenge)	1.05	0
Artist-in-Schools/Communities Grants	1.06	0
Beyond School Bells Grant	1.07	0
Building Safe and Responsive Schools Grants	1.08	0
Career and Technical Education Grants (Carl Perkins)	1.09	26,800
Career Education Grants	1.10	0
Century Link/NETA Grants	1.11	0
Community Incentive Grants	1.12	0
Distance Learning Grants (Federal)	1.13	0
Early Childhood Education Endowment Program Ages Birth-3 (Sixpence) Grants	1.14	0
Early Childhood Education Program Ages 3-5 Grants	1.15	0
Early Childhood Training Program Grants (discretionary)	1.16	0
Early Intervention Act and IDEA Part C (Infants/Toddlers with Disabilities) Grants Learning Opportunity Grants and Innovation Grants)	1.17	0
Education Improvement Fund Grants (includes Distance Education Incentive Grants, Expanded Learning Opportunity Grants and Innovation Grants)	1.18	0
EducationQuest Foundation Community Grants	1.19	0
Forest Service Grants (Conservation Education)	1.20	0
Great Plains Communications Grants (Commitment to the Schools)	1.21	0
Head Start Grants	1.22	0
High Ability Learner Incentive Grants (Gifted)	1.23	

		6,418
High School Equivalency Assistance Act Grants	1.24	0
IDEA Part B & Sec 619 Flow-Through Grants (includes Base, Enrollment/Poverty, CEIS, and Non-public)	1.25	0
IDEA Special Education Discretionary Grants (includes State Improvement Grants (SpDG/PBIS), Deaf-Blind Grants, Part B Sec 611 & Sec 619 State Set-Aside Grants, and other Office of Special Education Program (OSEP) Grants	1.26	172,478
Immigrant Impact Education Grants	1.27	0
Improving Health & Education Outcomes for Young People	1.28	0
Indian Education Grants	1.29	0
Innovation in Education Program Grants (includes funds from USDE)	1.30	0
Johnson-O'Malley Grants	1.31	0
Kiewit Foundation Grants	1.32	0
Magnet School Grants	1.33	0
Medicaid Administrative Activities in Public Schools (MAAPS) Grants	1.34	0
Mentoring for Success Grants	1.35	0
Microsoft Settlement Agreement	1.36	0
National Science Foundation Grants	1.37	0
ESEA Title I Grants (includes Accountability, Disadvantaged, Migrant Education, and Neglected or Delinquent)	1.38	42,000
ESEA Title II Part A - Teacher Quality Grants (Principal and Teacher Training and Recruiting/Class Size Reduction)	1.39	13,302
ESEA Title II Part B - Mathematics and Science Partnership Grants	1.40	0
ESEA Title III Grants - Immigrant Education Grants	1.41	0
ESEA Title III Grants - Limited English Proficiency	1.42	0
ESEA Title IV Part A - Student Support & Academic Enrichment Grants	1.43	0
ESEA Title IV Part B - 21st Century Community Learning Center Grants	1.44	0
ESEA Title VI Grants - Rural and Low-Income (Rural Education Achievement Program (REAP) Grants)	1.45	45,000
NCLB Title VII Grants - Indian, Native Hawaiian, and Alaska Native Education	1.46	0
NCLB Title IX - McKinney Vento Homeless Education Grants	1.47	0
Nebraska Arts Council Grants	1.48	0
Nebraska Community Foundation/TeamMates Grants	1.49	0
Nebraska Environmental Trust Grants	1.50	0
Nebraska Game & Parks Commission Grants (Conservation Education, Outdoor Classroom)	1.51	0
Nebraska Humanities Grants	1.52	0
Nebraska Natural Resources Commission Grants	1.53	0
Ritonya-Buscher-Poehling Foundation Grants	1.54	0
Safe Routes to Schools Grant	1.55	0
Save the Children Grant	1.56	0
School Health Program Grants	1.57	0
Smaller Learning Communities Program Grants	1.58	0
Summer Food Service Program	1.59	0
Teaching American History (TAH) Grants	1.60	0
Technology Information Infrastructure Assistance Program Grants (U.S. Department of Commerce)	1.61	0
Textbook Loan Grants (Rule 4)	1.62	0

Vocational Rehabilitation Grants	1.63	0
WindTurbine Project Grants	1.64	0
*Insurance Settlements	1.65	0
*Interfund Loans	1.66	0
*Reimbursements for Wards of the Court	1.67	0
*Short-Term Borrowings	1.68	0
*Special Supplementary Grants from City or County Governments	1.69	0
*Special Supplementary Grants from City or County Governments	1.70	0
*Special Supplementary Grants from Corporations, Foundations, or Other Private Interests	1.71	8,100
*Special Supplementary Grants from Corporations, Foundations, or Other Private Interests	1.72	0

*** Items denoted with a * must be approved by the State Board of Education.
Email your request for approval of these items to:
Bill Biven at bill.biven@nebraska.gov**

2017 - 2018 BUDGET RECEIPTS

		PERCENT OF BUDGET
TOTAL BUDGET RECEIPTS	8,223,001	
LOCAL SOURCES	6,500	0.0790%
COUNTY SOURCES	444,500	5.4056%
STATE AID	101,349	1.2325%
STATE SOURCES	424,310	5.1600%
FEDERAL SOURCES	235,202	2.8603%
NON-REVENUE SOURCES	200	0.0024%
TAXES	7,010,940	85.2601%
TOTAL	8,223,001	100.0000%

2017 - 2018 BUDGET EXPENDITURES

		PERCENT OF BUDGET
TOTAL BUDGET EXPENDITURES	9,523,879	
TOTAL SALARIES/BENEFITS	6,809,034	71.4943%
TOTAL INSTRUCTIONAL	1,107,145	11.6249%
TOTAL OPERATION/MAINTENANCE	1,213,208	12.7386%
TOTAL TRANSPORTATION	394,492	4.1421%
TOTAL	9,523,879	100.0000%

LEVY PROJECTION - GENERAL FUND

2017-2018
VALUATIONS

	2016	2017	INC/DEC	
BUTLER	862,820	853,620	(9,200)	-1.07%
LANCASTER	371,637,921	396,528,081	24,890,160	6.70%
SAUNDERS	319,543,460	326,304,904	6,761,444	2.12%
SEWARD	9,426,310	9,533,245	106,935	1.13%
TOTAL VALUATION	701,470,511	733,219,850	31,749,339	4.53%
			31,749,339	
PERCENT OF INCREASE IN VALUATION				4.53%

2017-2018

BUDGET	9,523,879.00
CASH RESERVE	1,800,000.00
TOTAL REQUIREMENTS	11,323,879.00

BANK BALANCE PROJECTED	2,400,878.00
COUNTY TREASURER BALANCE	700,000.00
STATE AID	101,349.00
ESTIMATED RECEIPTS	1,110,712.00
TOTAL RECEIPTS PROJECTED	4,312,939.00
PROPERTY TAXES REQUIRED	7,010,940.00
TOTAL RECEIPTS	11,323,879.00

VALUATION	733,219,850.00
-----------	----------------

TAXES REQUIRED	7,010,940.00
COMMISSION AT 1%	70,817.50
DELINQUENT TAX @3%	0.00

TOTAL REQUIREMENTS	7,081,757.50
--------------------	--------------

LEVY	0.965844
------	----------

EACH CENT IS WORTH	73,321.99
--------------------	-----------

This includes everything, no exclusions.

VALUATIONS - HS BOND FUND

2017-2018

Valuations

	2016	2017	INC/DEC	
BUTLER	862,820	853,620	(9,200)	-1.07%
LANCASTER	371,637,921	396,528,081	24,890,160	6.70%
SAUNDERS	322,038,980	328,936,984	6,898,004	2.14%
SEWARD	9,426,310	9,533,245	106,935	1.13%
TOTAL VALUATION	703,966,031	735,851,930	31,885,899	4.53%
			31,885,899	
PERCENT OF INCREASE IN VALUATION				4.53%

2017-2018

BUDGET	1,742,759.00
CASH RESERVE	
TOTAL REQUIREMENTS	1,742,759.00

BANK BALANCE PROJECTED	788,487.00
COUNTY TREASURER BALANCE	50,000.00
SALE OF BONDS	
INTEREST	1,100.00
TOTAL RECEIPTS PROJECTED	839,587.00
PROPERTY TAXES REQUIRED	903,172.00
TOTAL RECEIPTS	1,742,759.00

VALUATION 735,851,930.00

TAXES REQUIRED	903,172.00
COMMISSION AT 1%	9,122.94
DELINQUENT TAX @3%	

Delinquent Charge Part of \$1.05 Levy-Don't Use

TOTAL REQUIREMENTS 912,294.94

LEVY 0.123978

EACH CENT IS WORTH 73,585.19

VALUATION - LEVY PROJECTION-HS BOND

VALUATIONS BUILDING FUND

2017-2018

VALUATIONS

	2016	2017	INC/DEC	
BUTLER	862,820	853,620	(9,200)	-1.07%
LANCASTER	371,637,921	396,528,081	24,890,160	6.70%
SAUNDERS	319,543,460	326,304,904	6,761,444	2.12%
SEWARD	9,426,310	9,533,245	106,935	1.13%
TOTAL VALUATION	701,470,511	733,219,850	31,749,339	4.53%
			31,749,339	
PERCENT OF INCREASE IN VALUATION				4.53%

2017-2018

BUILDING FUND

TAXES REQUIRED	290,000.00
COMMISSION AT 1%	2,929.29
TOTAL REQUIRMENTMENTS	292,929.29
LEVY	0.039951
EACH CENT IS WORTH	73,321.99

VALUATION - LEVY PROJECTION

VALUATIONS - QUALIFIED CAPITAL PURPOSE UNDERTAKING FUND

2017-2018

Valuations

	2016	2017	INC/DEC	
BUTLER	862,820	853,620	(9,200)	-1.07%
LANCASTER	371,637,921	396,528,081	24,890,160	6.70%
SAUNDERS	319,543,460	326,304,904	6,761,444	2.12%
SEWARD	9,426,310	9,533,245	106,935	1.13%
TOTAL VALUATION	701,470,511	733,219,850	31,749,339	4.53%
			31,749,339	
PERCENT OF INCREASE IN VALUATION				4.53%

2017-2018

BUDGET	112,490.00
CASH RESERVE	0.00
TOTAL REQUIREMENTS	112,490.00

BANK BALANCE PROJECTED	69,149.00
COUNTY TREASURER BALANCE	5,000.00
INTEREST	100.00
TOTAL RECEIPTS PROJECTED	74,249.00
PROPERTY TAXES REQUIRED	38,241.00
TOTAL RECEIPTS	112,490.00

VALUATION 733,219,850.00

TAXES REQUIRED	38,241.00	
COMMISSION AT 1%	386.27	
DELINQUENT TAX @3%		Delinquent Charge Part of \$1.05 Levy-Don't Use

TOTAL REQUIREMENTS 38,627.27

LEVY 0.005268

EACH CENT IS WORTH 73,321.99

VALUATION - LEVY PROJECTION-QUALIFIED CAPITAL PURPOSE UNDERTAKING FUND

5.2 cents only allowed for levy

LEVY ESTIMATION
2017-2018

VALUATION	PROPERTY TAX	LEVY	FUND
733,219,850	7,081,757.50	0.965844	General Fund
			Bond Fund
735,851,930	912,294.94	0.123978	HS Bond Fund
733,219,850	292,929.29	0.039951	Building Fund
733,219,850	38,627.27	0.005268	Qualified Capital Purpose Undertaking Fund
	8,325,609.00	1.135041	

LEVY ESTIMATION
2016-2017

VALUATION	PROPERTY TAX	LEVY	FUND
701,470,511	6,842,548.00	0.975458	General Fund
700,369,840	171,045.52	0.024422	Bond Fund
703,966,031	813,443.90	0.115552	HS Bond Fund
701,470,511	212,100.00	0.030236	Building Fund
701,470,511	36,953.88	0.005268	Qualified Capital Purpose Undertaking Fund
	8,076,091.30	1.150936	
		(0.015895)	

valuations

TAX ASKING

	2016-2017	2017-2018	DIFFERENCE	%CHANGE
GENERAL	6,842,548	7,081,758	239,210	3.50%
BUILDING	212,100	292,929	80,829	38.11%
TOTAL	7,054,648	7,374,687	320,039	4.54%

CERTIFIED VALUATION

	2016-2017	2017-2018	DIFFERENCE	%CHANGE
LANCASTER	371,637,921	396,528,081	24,890,160	6.70%
SAUNDERS	319,543,460	326,304,904	6,761,444	2.12%
SEWARD	9,426,310	9,533,245	106,935	1.13%
BUTLER	862,820	853,620	(9,200)	-1.07%
TOTAL	701,470,511	733,219,850	31,749,339	4.53%

BUDGET

NOTICE OF BUDGET HEARING AND BUDGET SUMMARY

Raymond Central Public School (55-0161) in Lancaster County, Nebraska

PUBLIC NOTICE is hereby given, in compliance with the provisions of State Statute Sections 13-501 to 13-513, that the governing body will meet on the 13 day of September, 2017 at 7:00 o'clock, P.M., at Swing Class Room for the purpose of hearing support, opposition, criticism, suggestions or observations of taxpayers relating to the following proposed budget and to consider amendments relative thereto. The budget detail is available at the office of the Clerk/Secretary during regular business hours.

FUNDS	Actual Disbursements & Transfers	Actual/Estimated Disbursements & Transfers	Budgeted Disbursements & Transfers	Necessary Cash Reserve	Total Available Resources Before Property Taxes	Fee and Delinquent Tax Allowance	Total Personal and Real Property Tax Requirement
	(1)	(2)	(3)				
General	\$ 7,598,541.00	\$ 7,927,221.00	\$ 9,523,879.00	\$ 1,800,000.00	\$ 4,312,939.00	\$ 70,817.50	\$ 7,081,757.50
Depreciation	\$ 84,730.00	\$ 725,568.00	\$ 1,330,452.00		\$ 1,330,452.00		
Employee Benefit	\$ -	\$ -	\$ 53,620.00	\$ -	\$ 53,620.00		
Contingency	\$ -	\$ -	\$ -	\$ -	\$ -		
Activities	\$ 383,945.00	\$ 390,859.00	\$ 625,000.00	\$ -	\$ 625,000.00		
School Nutrition	\$ 328,613.00	\$ 308,690.00	\$ 700,000.00	\$ -	\$ 700,000.00		
Bond	\$ 4,631,235.00	\$ 1,032,797.00	\$ 1,742,759.00	\$ -	\$ 839,587.00	\$ 9,122.94	\$ 912,294.94
Special Building	\$ -	\$ 488,182.00	\$ 1,139,165.00		\$ 849,165.00	\$ 2,929.29	\$ 292,929.29
Qualified Capital Purpose Undertaking	\$ 52,025.00	\$ 51,738.00	\$ 112,490.00	\$ -	\$ 74,249.00	\$ 386.27	\$ 38,627.27
Cooperative	\$ -	\$ -	\$ -	\$ -	\$ -		
Student Fee	\$ 36,890.00	\$ 50,000.00	\$ 100,000.00	\$ -	\$ 100,000.00		
TOTALS	\$ 13,115,979.00	\$ 10,975,055.00	\$ 15,327,365.00	\$ 1,800,000.00	\$ 8,885,012.00	\$ 83,256.00	\$ 8,325,609.00

Clerk/Secretary

Total Personal and Real Property Tax Requirement For Bonds

\$ 912,294.94

Total Personal and Real Property Tax Requirement for ALL Other

\$ 7,413,314.06

Notice of Special Hearing To Set Final Tax Request

Raymond Central Public School (55-0161) in Lancaster County County, Nebraska

PUBLIC NOTICE is hereby given, in compliance with the provisions of State Statute Section 77-1601.02, that the governing body will meet on the 13 day of September 2017 at 7:15 o'clock P.M., at Swing Class Room for the purpose of hearing support, opposition, criticism, suggestions or observations of taxpayers relating to setting the final tax request at a different amount than the prior year tax request.

2016/17 Budget Information

2017/18 Budget Information

Fund	2016-2017 Property Tax Request	2016 Tax Rate	Property Tax Rate (2016-2017 Request Divided By 2017 Valuation)	2017-2018 Proposed Property Tax Request	Proposed 2017 Tax Rate
General Fund	6,842,548.00	0.975458	0.933219	7,081,757.50	0.965844
Bond Fund(s) K - 12			0.000000		0.000000
Bond Fund(s) K - 8	813,443.90	0.024422	0.110941		0.000000
Bond Fund(s) 9 - 12	171,045.52	0.115552	0.023328	912,294.94	0.124423
Bond Fund			0.000000		0.000000
Special Building Fund	212,100.00	0.030236	0.028927	292,929.29	0.039951
Qualified Capital Purpose Undertaking Fund K - 12	36,953.88	0.005268	0.005040	38,627.27	0.005268
Qualified Capital Purpose Undertaking Fund K - 8			0.000000		0.000000
Qualified Capital Purpose Undertaking Fund 9 - 12			0.000000		0.000000

SCHEDULE OF TAX COLLECTIONS (GENERAL FUND)

SCHOOL YEAR	TAXES CERTIFIED	AMOUNT COLLECTED	DIFFERENCE	% COLLECTED
2002-2003	2,516,342.00	2,426,544.13	(89,797.87)	96%
2003-2004	2,949,506.00	2,800,619.44	(148,886.56)	95%
2004-2005	3,063,982.00	2,996,303.53	(67,678.47)	98%
2005-2006	3,238,384.00	3,082,103.53	(156,280.47)	95%
2006-2007	3,587,239.00	3,493,013.00	(94,226.00)	97%
2007-2008	3,746,964.00	3,574,982.30	(171,981.70)	95%
2008-2009	4,065,651.00	3,842,217.56	(223,433.44)	95%
2009-2010	4,064,350.00	3,793,341.04	(271,008.96)	93%
2010-2011	4,214,751.00	3,974,732.43	(240,018.57)	94%
2011-2012	4,627,090.00	4,313,295.02	(313,794.98)	93%
2012-2013	5,036,828.00	4,630,619.39	(406,208.61)	92%
2013-2014	5,854,227.00	5,544,728.06	(309,498.94)	95%
2014-2015	6,288,000.00	5,940,314.67	(347,685.33)	94%
2015-2016	6,650,000.00	6,095,774.10	(554,225.90)	92%
2016-2017	6,774,800.00	6,425,477.33	(349,322.67)	95%

VALUES FOR TAX LEVY PURPOSES (AFFILIATES NOT INCLUDED)

SCHOOL YEAR	VALUATION	INCREASE(DECREASE) VS PRIOR YEAR	
		AMOUNT	PERCENT
2002-2003	260,735,027.00		
2003-2004	291,912,090.00	31,177,063.00	11.96%
2004-2005	300,430,451.00	8,518,361.00	2.92%
2005-2006	316,281,306.00	15,850,855.00	5.28%
2006-2007	353,206,713.00	36,925,407.00	11.67%
2007-2008	363,480,026.00	10,273,313.00	2.91%
2008-2009	387,840,542.00	24,360,516.00	6.70%
2009-2010	410,192,751.00	22,352,209.00	5.76%
2010-2011	415,312,107.00	5,119,356.00	1.25%
2011-2012	458,786,630.00	43,474,523.00	10.47%
2012-2013	501,205,610.00	42,418,980.00	9.25%
2013-2014	574,039,034.00	72,833,424.00	14.53%
2014-2015	616,522,944.00	42,483,910.00	7.40%
2015-2016	665,032,665.00	48,509,721.00	7.87%
2016-2017	701,470,511.00	36,437,846.00	5.48%
2017-2018	733,219,850.00	31,749,339.00	4.53%

TAX RATES (AFFILIATES INCLUDED)

SCHOOL YEAR	GENERAL FUND LEVY	INCREASE(DECREASE) VS PRIOR YEAR		
		BUILDING FUND	TOTAL LEVY	EASE/DECREASE
2002-2003	0.9742	0.0558	1.0300	
2003-2004	1.0199	0.0569	1.0768	0.0468
2004-2005	1.0283	0.0403	1.0686	(0.0082)
2005-2006	1.0318	0.0383	1.0701	0.0015
2006-2007	1.0258	0.0429	1.0687	(0.0014)
2007-2008	1.0412	0.0278	1.0690	0.0003
2008-2009	1.0588	0.0130	1.0718	0.0028
2009-2010	1.0008	0.0492	1.0500	(0.0218)
2010-2011	1.0250	0.0249	1.0499	(0.0001)
2011-2012	1.0186	0.0423	1.0609	0.0110
2012-2013	1.0150	0.0450	1.0600	(0.0009)
2013-2014	1.0300	0.0200	1.0500	(0.0010)
2014-2015	1.0301	0.0199	1.0500	0.0000
2015-2016	1.0100	0.0400	1.0500	0.0000
2016-2017	0.9755	0.0302	1.0057	(0.0443)
2017-2018	0.9658	0.0400	1.0058	0.0001

TAXABLE VALUATION (2017) - TOTAL**733,219,850**

INCLUDES SAUNDERS COUNTY	326,304,904
INCLUDES LANCASTER COUNTY	396,528,081
INCLUDES SEWARD COUNTY	9,533,245
INCLUDES BUTLER COUNTY	853,620

TOTAL VALUATION**733,219,850****RECEIPTS**

	GENERAL FUND	INCREASE(DECREASE)	PERCENT
2007-2008	6,886,406		
2008-2009	7,663,620	777,214	11.2862%
2009-2010	7,860,952	197,332	2.5749%
2010-2011	7,640,389	(220,563)	-2.8058%
2011-2012	7,694,475	54,086	0.7079%
2012-2013	8,145,231	450,756	5.8582%
2013-2014	8,627,407	482,176	5.9197%
2014-2015	9,044,986	417,579	4.8401%
2015-2016	9,849,421	804,435	8.8937%
2016-2017	10,532,852	683,431	6.9388%
2017-2018	11,323,879	791,027	7.5101%

EXPENDITURES

	GENERAL FUND	INCREASE(DECREASE)	PERCENT
2007-2008	6,286,406		
2008-2009	7,163,620	877,214	13.9541%
2009-2010	7,360,952	197,332	2.7546%
2010-2011	7,040,389	(320,563)	-4.3549%
2011-2012	7,044,475	4,086	0.0580%
2012-2013	7,495,231	450,756	6.3987%
2013-2014	7,900,407	405,176	5.4058%
2014-2015	8,144,986	244,579	3.0958%
2015-2016	8,449,421	304,435	3.7377%
2016-2017	9,032,852	583,431	6.9050%
2017-2018	9,523,879	491,027	5.4360%

COMPARISON OF MONTHLY TAXES RECEIVED

Month	2009-2010	2010-2011	2011-2012	2012-2013	2013-2014	2014-2015	2015-2016	2016-2017	2017-2018
September	505,139.34	584,169.61	670,548.90	801,884.47	924,595.72	1,033,133.05	1,436,934.88	1,440,911.82	1,440,911.82
October	266,777.83	243,084.75	182,914.95	161,154.94	169,416.15	252,914.64	261,868.90	217,780.85	217,780.85
November	771,917.17	827,254.36	853,461.85	963,039.41	1,094,011.87	1,156,047.69	1,208,803.78	1,358,692.67	1,358,692.67
December	55,912.77	68,137.96	55,893.83	58,867.33	54,712.54	64,694.21	64,380.63	76,061.56	76,061.56
January	827,829.94	895,392.32	909,355.68	1,021,906.74	1,148,724.41	1,220,741.90	1,273,184.41	1,434,754.23	1,434,754.23
February	21,727.73	24,136.12	28,083.21	31,744.06	33,120.07	32,451.50	42,116.76	36,938.51	36,938.51
March	849,557.67	919,528.44	937,438.89	1,053,650.80	1,181,844.48	1,253,193.40	1,315,301.17	1,471,992.74	1,471,992.74
April	377,147.34	309,230.97	398,187.55	483,800.58	612,946.22	884,610.94	677,269.38	772,526.26	772,526.26
May	1,226,705.01	1,228,759.41	1,335,626.44	1,517,631.38	1,794,790.70	2,137,804.34	1,992,570.55	2,244,219.00	2,244,219.00
June	96,614.35	170,943.60	171,776.88	211,034.22	267,777.49	210,928.57	375,390.54	349,478.11	349,478.11
July	1,322,319.36	1,399,703.01	1,507,403.32	1,728,665.60	2,062,568.19	2,348,732.91	2,367,961.09	2,593,997.11	2,593,997.11
August	67,738.54	75,021.92	83,323.45	61,836.21	125,035.61	89,697.42	124,371.32	114,529.14	114,529.14
Total for YTD	1,390,057.90	1,474,724.93	1,590,726.77	1,790,501.81	2,187,603.80	2,438,430.33	2,492,332.41	2,708,226.25	2,708,226.25
	34.20%	34.99%	34.99%	34.38%	35.56%	37.37%	38.78%	42.92%	42.92%
	714,420.96	787,261.95	790,634.17	834,631.03	948,914.86	1,100,966.40	1,035,385.13	1,059,739.12	1,059,739.12
	51.78%	53.67%	53.67%	51.47%	52.12%	53.58%	56.29%	53.05%	53.05%
	708,682.87	721,862.54	835,591.47	1,089,986.22	1,142,773.65	1,076,552.37	1,406,223.06	1,370,724.85	1,370,724.85
	69.22%	70.80%	69.52%	73.96%	73.10%	73.10%	73.41%	74.19%	74.19%
	2,813,161.73	2,983,849.42	3,216,952.41	3,725,119.06	4,279,292.31	4,615,979.10	4,933,940.50	5,138,690.22	5,138,690.22
	76.35%	77.49%	76.73%	77.47%	78.76%	79.67%	80.11%	81.11%	81.11%
	3,103,023.67	3,266,066.26	3,550,363.73	3,901,991.78	4,311,066.10	4,663,990.62	5,037,208.82	5,228,022.49	5,228,022.49
	77.12%	78.81%	77.52%	78.31%	79.31%	80.73%	82.16%	83.16%	83.16%
	3,134,400.65	3,321,595.44	3,586,996.90	3,944,529.05	4,279,292.31	4,663,990.62	5,037,208.82	5,228,022.49	5,228,022.49
	77.12%	78.81%	77.52%	78.31%	79.31%	80.73%	82.16%	83.16%	83.16%
	656,940.39	653,136.99	726,298.12	686,090.34	880,737.33	903,105.82	867,751.61	937,249.86	937,249.86
	93.33%	94.31%	93.22%	91.94%	91.94%	94.71%	94.47%	91.67%	91.67%
	3,793,341.04	3,974,732.43	4,313,295.02	4,630,619.39	5,044,727.95	5,940,314.67	6,095,774.10	6,425,477.33	6,425,477.33
	93.33%	94.31%	93.22%	91.94%	91.94%	94.71%	94.47%	91.67%	91.67%

COMPARISON OF TAXES REQUESTED TO TAXES RECEIVED

	2009-2010	2010-2011	2011-2012	2012-2013	2013-2014	2014-2015	2015-2016	2016-2017	2017-2018
Taxes Requested	4,064,350.00	4,214,751.00	4,627,090.00	5,036,828.00	5,854,227.00	6,288,000.00	6,650,000.00	6,774,800.00	6,774,800.00
Taxes Received	3,793,341.04	3,974,732.43	4,313,295.02	4,630,619.39	5,544,727.95	5,940,314.67	6,095,774.10	6,425,477.33	6,425,477.33
Difference	271,008.96	240,018.57	313,794.98	406,208.61	309,499.05	347,685.33	554,225.90	349,322.67	349,322.67
%compliance	93.33%	94.31%	93.22%	91.94%	91.94%	94.71%	94.47%	91.67%	91.67%

2. System-Wide Tax Request Hearing
3. Call to Order and Pledge of Allegiance
4. Oath of Office - Cicely Pickel

RAYMOND CENTRAL PUBLIC SCHOOL DISTRICT
BOARD OF EDUCATION

OATH OF OFFICE

I, COURTNEY POTTER, do solemnly swear that I will support the Constitution of the United States and the Constitution of State of Nebraska, against all enemies, foreign and domestic; that I will bear true faith and allegiance to the same; that I take this obligation freely and without mental reservation or for purpose of evasion; and that I will faithfully and impartially perform the duties of the Office as a "Student Member" of the Board of Education of Lancaster County School District #55-0161 according to law, and to the best of my ability. And I do further swear that I do not advocate, nor am I a member of any political party or organization that advocates the overthrow of the government of the United States or of this state by force or violence; and that during such time as I am in this position I will not advocate nor become a member of any political party or organization that advocates the overthrow of the government of the United States or of this state by force or violence. So help me God.

Dated this 14th day of September, 2016.

Student Member, Board of Education
Lancaster County School District
#55-0161 a/k/a Raymond Central Public
School District

Witnessed by:

5. Motion to Excuse Board Member's Absence
6. Open Meeting Law
7. Consent Agenda
8. Regular Minutes of August 16th, 2017

Board of Education Regular Meeting
Wednesday, August 16, 2017 7:00 PM Central

Raymond Central Junior Senior High School -
Swing Classroom #108
1800 West Agnew Road
Raymond, NE 68428-9783

Present: Scott Black, Matt Blanchard, Brad Breitreutz, Harriet Gould, Lori Springer, Susan Urbom. Present: 6. Also in attendance were Derrick Joel, Superintendent, Kolin Haecker, Secondary Principal, Shelly Dostal, Valparaiso Elementary Principal and Ann Egr, Ceresco Elementary Principal.

1. Call to Order and Pledge of Allegiance

President Gould called the meeting to order at 7:00 PM and the Pledge of Allegiance was said.

2. Motion to Excuse Board Member's Absence

All members were present.

3. Open Meeting Law

President Gould reminded the audience that the Open Meeting Laws are displayed in the back of the room for their review.

4. Consent Agenda

Motion by Black, second by Urbom approve the consent agenda as presented, regular meeting minutes of July 12, 2017, August Financial Statement and monthly bills as presented. RCV 6-0. Motion carried.

4.1. Regular Minutes of July 12th, 2017

4.2. Financial Statement/Report

4.3. Monthly Bills

5. Correspondence/Recognition

There was no correspondence/recognition.

6. Public Forum

Cicely Pickel was introduced to the Board as the Student Board Member for 2017-18.

7. Discussion Items

7.1. Administrative Reports

The first day of school begins on August 16. We have had a big jump in number of students at Raymond Central with 72 more than at the start of 2016-17. We are looking forward to the start of a great school year.

Meet and Greet Night is scheduled for Monday, August 14. Kindergarteners and their families will start the evening at 5:30. Grades 1-5 will visit from 6:00-7:00. Students will meet their teachers, bring supplies, and enjoy a treat from PTO. We will have 6th, 7th grade and new student Open House on Tuesday, August 15 from 6:00-7:00 pm.

The PTO is hosting a pool party at the Aquatic Center in Wahoo from 6-8pm on August 12. PTO had the first planning meeting for the year on August 8. Items discussed included the Meet and Greet Night, first day snacks for students, the annual fundraiser, Fall Festival, Multi-Cultural Night, and other event dates for the school year. They also plan to provide lunch for the elementary staff on August 16. Raymond Central is very lucky to have such a supportive group!

We will have a "safety day" on August 18 to practice all the various emergency procedures that we hope we never have to use. We will hold bus evacuations, a fire drill, a tornado drill, and a lockdown drill.

The Food Bank Backpack Program will again offer backpacks of food at RC. The RCEF helps with the accounting and a committee including staff, parents, and community members is in charge of oversight. Backpacks filled with food are distributed to families at the end of each week at each elementary school. Families may apply for the program similar to the Free and Reduced Lunch Program and Student Fee Waiver. Funds for the program are from private donations by organizations and individuals, the Hustle Fun Run and pancake feed. Mark your calendars for the Hustle on October 28 this year. A big thank you to all the organizations and individuals who have donated their money, time, and energy to make this program successful. A special thank you to Immanuel Lutheran Church for housing the food and all volunteers who pack the bags each week.

Submitted by Kolin Haecker, 6-12 Principal & Curriculum Director

A new beginning in the history of Raymond Central as we begin another 50 years of education for our students. We bring the 6th grade students together for the first time at the high school building now making it the Middle/High school building.

Students in grades 6-8 will be going to the Haymarket Park for fun activities learning about the eclipse on Monday, August 21. Students in grades 9-12 will go outside at the appropriate time to observe the eclipse from the school property. We want to thank Mike Unverferth for providing glasses for all the high school students and staff. We would also like to thank Mrs. Trautman for organizing the day for the middle school students. She applied for a grant that supplied the glasses for students.

Mrs. Dostal and I will be presenting NeSA & ACT data from this past school year at the September board meeting, granted they have lifted the embargo by our next meeting.

Mr. Luke conducted band camp August 7-11 at the high school.

Submitted by Greg Wilmes, Assistant Secondary Principal/Activities Director

Fall sports practices starting on Monday, August 7. Volleyball will have a jamboree game on August 21 and their opener will be August 29. First contest for softball will be Thursday, August 17 against Wahoo. First meet for cross country will be at East Butler on August 24, and first football game will be August 24 at Aquinas. Preliminary numbers for sports are CC: 15-18, SB: 16, FB: 39, VB: 24. Due to low numbers in softball, some JV games will be shortened or even cancelled depending on # of games in a short time span. Junior high football will start Thursday, August 17, with their first game September 7. Junior high VB will start the week of August 21, with their first game September 7 as well.

Gym floors were refinished this summer, with the main gym getting sanded down and repainted as well. Final pads for the pillars next to the stage will hopefully be here the first week of school. Special thanks to CSI for their work with the pads, as well as Mr. Harrington's construction class for installation of the doors and wall pads.

We are in the process of hiring a baseball coach to represent Raymond Central in the co-op with Malcolm. Lincoln Lutheran will continue to co-op with Wahoo and Neumann.

Schedules have been posted for the 17-18 school year with other events as well. Please visit "rcentral.org" and go to the "Activities Calendar" for the most current schedules and events.

Submitted by Shelly Dostal, Elementary Principal at Valparaiso, and Curriculum Director for K-5

Enrollment at Valparaiso - Total enrollment K-5 is 173 students as of 8/10/17. We are watching the 1st grade class size and the 5th grade class size closely with 26 and 28 students respectively.

Summer Learning - Staff attended various trainings this summer. English Language Arts (ELA) teachers participated in a day long training for Study Sync (gr 6-8) or Wonders (K-5) in August. We will continue to learn together throughout the year. Many teachers also attended graduate level classes. Our teachers continue to grow and learn and we appreciate their efforts to continue their lifelong learning journey.

Opening Workshops - All staff workshops will begin on Monday, August 14. We are excited to begin a new year! Agenda items include Curriculum/Instruction/Assessments, Advanced Ed/School Improvement, Board Policies, Health/Safety Procedures and training, and a guest speaker.

District Curriculum and Assessment - We have been informed that data will be made public in late August. Mr. Haecker and I will plan to share data at the September Board meeting. All results are embargoed until made public. Districts have seen NeSA Math and Science data, but we are awaiting ELA results as well ACT.

Submitted by Ann Egr, Elementary Principal at Ceresco and District Special Education Director

Enrollment at Ceresco - Total enrollment K-5 is 123 students as of 8/10/17. Last year at this time the enrollment was 108 and the school year ended with 115 students. There are 22 kindergarteners registered. It is exciting to see the increase!

Administrator Days were held in Kearney on July 26-28. NDE reviewed changes made in Rule 51:Regulations and Standards for Special Education Programs. The district is currently serving 98 students with 15 of them falling in the B-5 category.

Meredith Hoxmeier and I spent an entire day on August 10 receiving new curriculum training. Unique Learning System® is an award-winning, online, standards-based set of interactive tools specifically designed for students with special needs to access the general curriculum. Unique Learning System provides preschool through transition students with rigorous, standards-based materials specifically designed to meet their instructional needs. The Special Education Department would like to extend a HUGE thank-you to the PTO for this generous contribution!!

NDE and NASES annual fall conference will be held the end of August. The focus of the meeting will be updates regarding rules, regulations, and IDEA (Individuals with Disabilities Educational Act) grant.

Dr. Joel and I will attend a meeting hosted by NDE regarding Medicaid Reimbursements on August 30, 2017.

ESU2 Updates: The service unit's new Director of Student Services is Daniel Bombeck. Mr. Bombeck is now the contact person for CASES (National Council of Administrators of Special Education). For the 2017-2018 school year, the following personnel will serve our students and staff: Jodie Sams - Special Education Student Services Supervisor; Heather Walla - Speech Pathologist; and Phillip Scherer - School Psychologist.

7.2. Curriculum Report

No additional information.

7.3. Superintendent's Report

The federal government re-opened the REAP Grant, which allowed for us to complete the application. We could receive \$40,000 depending upon how many school districts applied. We will be running 6 bus routes for the 2016-2017 school year. After reviewing the routes and times, we could have added a 7th route if another driver was available. We continue to search for substitute bus drivers.

Dr. Joel attended Open Meetings Law Workshop Topics that included an interactive analysis of factual scenarios based on Attorney General disposition letters and questions received by NASB. It was a great night of learning and networking.

Administrator days were held in Kearney July 25-28. The three keynote speakers were: Margaret Buckton (IA, 3rd grade retention), Eric Sheninger (Digital Leadership), and Jon Gordon (author of the Energy Bus and many others). The last speaker, Jon Gordon, did an outstanding job promoting the importance to always stay positive and other leadership advice. It was also nice to spend time together as an administrative team discussing priorities for next year. Dr. Joel was able to attend a variety of learning sessions: Personnel Rights and Issues A to Z, The Changing Workplace: Improving Communication and Collaboration, What Do School Leaders Need to Know About Early Childhood, and an update on Nebraska's legislation.

The School Improvement Team met Wednesday, August 9 to discuss goals for the 2017-2018 school year. Our primary focus for professional development will be on differentiated instruction. Preliminary data analysis indicates high levels of proficiency, however, growth is needed to get more students to the "exceeds" category. We will again be working with Dr. Nunnally who will focus on both differentiation through the use of research based instructional practices.

7.3.1. Develop a visible presence within the schools, the school community, and state.

7.3.2. Develop a 5 year facilities strategic plan for implementation that addresses maintenance and improvements for existing building assets.

7.3.3. Develop a thorough understanding of Nebraska School Finance and the Raymond Central budgeting process.

7.3.4. Develop an understanding of existing internal and external district communications and develop strategies to improve transparency and messaging.

7.4. Facilities Report

We have applied for a grant through the Nebraska Department of Health and Human Services Division of Water System Security to purchase a security camera that will give us eyes over the pump house, gas pump and bus barn. We have also asked for money to construct a fence around the pump house to secure the building. Total dollar amount asked for was \$9,000.

There was a meeting to discuss removal of the portable building and semi-truck off school grounds. In order to remove both, a new storage facility will need to be constructed to hold one act, track and other school related supplies and material. Kolin, Greg and I met with Mr. Harrington and Mr. Carriker to build a storage shed on the northeast side of campus. The project would connect to the curriculum of Mr. Harrington's construction class and provide a hands on experience for students. As we continue the conversation, more information will be provided along with cost estimates.

Dr. Joel met with Terry from Air Fluid Management to go through the balance report. The report is attached, however, is very difficult to read. Terry is going to replace a part on one of the exhaust fans in the kitchen. The next step in the process is to contact an engineering firm recommended by Terry, Davis Design, who can use the balance report and issues we have had to create action steps we can take to keep the humidity and mold out.

Dr. Joel has a meeting with Dave Bayne, the mold expert, Monday August 16th to take more samples and discuss ways to be proactive in making sure the building stays mold free.

An open house has been scheduled for the new addition Friday September 1st from 5:30 PM - 7:00 PM. Our goal is to catch as many people going to the first football game as possible.

7.5. Americanism Committee Report (Breitkreutz - chair, Urbom, Springer)

7.6. Transportation Committee (Black - chair, Breitkreutz, Springer)

7.7. Finance Committee (Springer - chair, Blanchard, Breitkreutz)

7.8. Facilities Committee (Blanchard - chair, Urbom, Springer)

7.9. Negotiations Team (Black - chair, Gould, Blanchard)

7.10. Curriculum Committee (Gould - chair, Black, Urbom)

7.11. Policy Committee (Springer - chair, Gould, Black)

7.12. 2017-2018 Activity Handbook - Consider, discuss, and take all necessary action
Motion by Springer, second by Breitkreutz to approve the 2017-18 Activity Handbook as presented. RCV 6-0. Motion carried.

7.13. 2017-2019 Cooperative Baseball Agreement - Consider, discuss, and take all necessary action
The 2017-19 Cooperative Baseball Agreement was tabled until the next meeting to refine some of the pieces.

7.14. Review of Technology Plan

Each building has been updated with new wireless. We will be getting bids for two exterior cameras that are still needed for the Pre-Kindergarten playground and the 6th Grade basketball court.

7.15. 2017-2018 School District Renewal Fee - Consider, discuss, and take all necessary action

Motion by Urbom, second by Blanchard to approve the district's annual insurance premium policy from EMC for \$111,776. RCV 6-0. Motion carried.

8. Action Items

8.1. Approve Substitute Teachers / Support Staff

Motion by Breitzkreutz, second by Blanchard to approve substitute teachers Randy Wilmes, Sandra Spangler and Barb Ohnoutka and substitute cook Alicia Schweitzer. RCV 6-0. Motion carried.

8.2. Approval of Step 1 2 Hour Jr./Senior High School Kitchen Staff

Motion by Blanchard, second by Urbom to approve the addition of Rhonda Madsen to work in the kitchen for 2 hours in the afternoon. RCV 6-0. Motion carried.

8.3. Approval of Hearings for 2017-2018 Budget and Tax Request Hearing

Motion by Black, second by Springer to hold the hearing for the 2017-18 budget summary and to review the system wide tax request on Wednesday, September 13 at 7:00 PM. RCV 6-0. Motion carried.

8.4. Approval of Next Regular Board of Education Meeting Wednesday, September 13th, 2017 at 7:00 PM

Motion by Springer, second by Blanchard to approve the next Regular Board of Education Meeting on Wednesday, September 13. RCV 6-0. Motion carried.

9. Adjournment

Motion by Breitzkreutz, second by Urbom to adjourn the meeting at 8:25 PM. RCV 6-0. Motion carried.

9. Financial Statement/Report

August		Percent of Year Completed		100.00%			
RECEIPTS	2016-2017		M-T-D	Y-T-D	Y-T-D	Year To Date	Year To Date
	2016-2017	RECEIVED	RECEIVED	RECEIVED	RECEIVED	% Received	% Received
ACCOUNT	ANTICIPATED	2016-2017	2016-2017	2015-2016	2015-2016	2016-2017	2015-2016
Property Taxes	\$6,774,800.00	\$937,249.86	\$6,425,477.33	\$6,095,774.10		94.84%	91.67%
Motor Vehicle Tax	\$398,000.00	\$34,499.65	\$409,336.51	\$397,492.80		102.85%	101.92%
Carline Taxes	\$3,500.00	\$0.00	\$3,586.55	\$4,190.21		102.47%	119.72%
Other Tuition	\$0.00	\$0.00	\$0.00	\$0.00			
Transportation from Individuals	\$0.00	\$0.00	\$0.00	\$0.00			
Interest	\$5,000.00	\$1,367.53	\$11,826.82	\$7,938.47		236.54%	396.92%
Local License Fees	\$1,500.00	\$705.00	\$2,025.00	\$2,310.00		135.00%	154.00%
Other Local Receipts	\$0.00	\$0.00	\$0.00	\$0.00			
Fines & License Fees	\$32,000.00	\$1,654.42	\$40,126.42	\$38,758.09		125.40%	121.12%
ESU Receipts	\$0.00	\$3,780.00	\$6,974.21	\$390.00			
State Aid	\$146,509.00	\$0.00	\$146,509.00	\$166,152.49		100.00%	100.00%
Special Education	\$300,000.00	\$0.00	\$433,465.00	\$400,555.00		144.49%	143.06%
Special Education Transportation	\$5,000.00	\$0.00	\$17,539.00	\$15,213.00		350.78%	101.42%
Homestead Exemption	\$0.00	\$25,814.01	\$153,122.57	\$156,098.42			
Payments for High Ability Learners	\$6,310.00	\$0.00	\$6,418.00	\$6,310.00		101.71%	103.80%
Pro-Rate Motor Vehicles	\$13,000.00	\$1,611.28	\$16,890.17	\$16,971.70		129.92%	125.72%
State Apportionment	\$100,000.00	\$0.00	\$134,297.77	\$130,645.83		134.30%	130.65%
Relief to Property Tax Payers	\$0.00	\$0.00	\$334,206.24	\$341,081.56			
Contracted Teacher Services	\$26,300.00	\$0.00	\$0.00	\$0.00		0.00%	0.00%
Other State Receipts	\$0.00	\$0.00	\$0.00	\$0.00			
Personal Property Tax Credit	\$0.00	\$10,058.80	\$22,699.37	\$0.00			
NCLB Grant	\$16,451.00	\$16,258.00	\$32,709.00	\$0.00		198.83%	0.00%
Other Federal Receipts	\$0.00	\$0.00	\$0.00	\$0.00			
Preschool SPED	\$100,000.00	\$10,037.00	\$125,725.00	\$0.00		125.73%	0.00%
SPED IDEA Grant	\$0.00	\$0.00	\$0.00	\$141,188.00			
Title I Funds	\$42,000.00	\$3,271.00	\$40,158.00	\$42,159.00		95.61%	100.38%
Universal Service Fund - E Rate	\$0.00	\$0.00	\$8,563.74	\$0.00			
State Fiscal Stabilization Funds	\$0.00	\$0.00	\$0.00	\$0.00			
Carl Perkins	\$500.00	\$500.00	\$500.00	\$500.00			
Insurance Adjustments	\$0.00	\$0.00	\$676.00	\$1,325.00			
Sale of Property	\$100.00	\$0.00	\$25.00	\$2,798.25		25.00%	2798.25%
MIPS-Medicaid in Public Schools	\$0.00	\$0.00	\$11,128.51	\$10,297.57			
Other Non-Revenue Receipts	\$100.00	\$3,228.43	\$3,900.26	\$916.64		3900.26%	916.64%
Cash Balance Dissolved/Merged Districts	\$0.00	\$0.00	\$1.12	\$1.18			
Balance Non-Resident HS Tuition	\$0.00	\$0.00	\$12.08	\$12.61			
TOTAL	\$7,971,070.00	\$1,050,034.98	\$8,387,898.67	\$7,979,079.92		105.23%	101.69%
DISBURSEMENTS	2016-2017		M-T-D	Y-T-D	Y-T-D	Year To Date	Year To Date
	2016-2017	DISBURSED	DISBURSED	DISBURSED	DISBURSED	% Disbursed	% Disbursed
CATEGORY	BUDGET	2016-2017	2016-2017	2015-2016	2015-2016	2016-2017	2015-2016
Instructional Services	\$3,889,068.00	\$451,587.91	\$3,698,831.66	\$3,319,801.02		95.11%	89.00%
Special Education	\$1,196,404.00	\$77,002.33	\$983,234.62	\$979,969.81		82.18%	88.94%
Guidance	\$172,429.00	\$13,316.64	\$149,688.18	\$147,062.55		86.81%	90.09%
Safety & Security	\$15,291.00	\$0.00	\$15,291.00	\$11,784.36		100.00%	99.99%
Activities	\$348,343.00	\$20,351.06	\$310,198.71	\$293,347.33		89.05%	95.40%
Media, Audio Visual, Technology	\$451,839.00	\$167,129.04	\$553,966.92	\$376,024.56		122.60%	99.40%
General Administration	\$293,613.00	\$26,426.88	\$307,473.69	\$283,161.83		104.72%	100.08%
School Administration	\$454,084.00	\$37,987.88	\$402,756.39	\$383,622.11		88.70%	92.83%
Business	\$364,783.00	\$99,855.99	\$165,897.36	\$177,889.50		45.48%	49.93%
Operation of Plant	\$774,582.00	\$60,693.57	\$535,508.66	\$503,151.31		69.14%	67.28%
Maintenance of Plant	\$352,905.00	\$294,164.78	\$443,812.44	\$510,166.35		125.76%	172.87%
Pupil Transportation	\$534,659.00	\$150,431.89	\$399,034.18	\$457,933.72		74.63%	91.63%
Grants	\$84,852.00	\$4,539.89	\$57,027.69	\$59,626.50		67.21%	68.88%
Transfers	\$100,000.00	\$2,500.00	\$2,500.00	\$95,000.00		2.50%	126.67%
TOTAL	\$9,032,852.00	\$1,405,987.86	\$8,025,221.50	\$7,598,540.95		88.84%	89.93%

RAYMOND CENTRAL PUBLIC SCHOOLS
 FINANCIAL REPORT TO THE BOARD OF EDUCATION
 POOLED CASH - BANK RECONCILIATION
 August 31, 2017

	8/1/2017 Thru 8/31/2017	8/1/2016 Thru 8/31/2016
Book Balance - Beginning of month	\$ 2,637,637.16	\$ 2,218,193.01
Total Receipts	\$ 1,061,794.89	\$ 1,007,001.26
Total Disbursements	\$ <u>(1,416,966.77)</u>	\$ <u>(1,305,406.16)</u>
Actual Book Balance - End of Month	<u>\$ 2,282,465.28</u>	<u>\$ 1,919,788.11</u>
Bank Balance - Beginning of month	\$ 2,720,497.01	\$ 2,312,372.89
Deposits	\$ 1,057,207.01	\$ 1,006,083.82
Interest	\$ <u>1,353.50</u>	\$ <u>914.38</u>
Total Receipts	\$ 3,779,057.52	\$ 3,319,371.09
Total Warrants	\$ <u>(1,210,273.31)</u>	\$ <u>(1,191,325.07)</u>
Bank Balance - End of Month	\$ 2,568,784.21	\$ 2,128,046.02
Plus Outstanding Deposits	\$ 3,234.38	\$ 3.06
Less Outstanding Checks	\$ (289,553.31)	\$ (208,260.97)
Reconciled Bank Balance - End of month	<u>\$ 2,282,465.28</u>	<u>\$ 1,919,788.11</u>

AUGUST RECEIPTS & DISBURSEMENTS

AUGUST 1, 2017 BANK BALANCE	2,637,637.16	
SAUNDERS COUNTY TREASURER		
TAXES	78,310.88	
MOTOR VEHICLE TAXES	16,623.85	
FINES & LICENSES	1,271.60	
PERSONAL PROPERTY TAX CREDIT	5,558.31	
HOMESTEAD EXEMPT	13,399.04	
MOTOR VEHICLE PRO-RATE	1,611.28	
LANCASTER COUNTY TREASURER		
TAXES	857,645.28	
MOTOR VEHICLE TAXES	17,005.56	
HOMESTEAD EXEMPT	12,414.97	
PERSONAL PROPERTY TAX CREDIT	4,402.35	
SEWARD COUNTY TREASURER		
TAXES	1,293.70	
MOTOR VEHICLE TAXES	775.10	
FINES & LICENSES	363.09	
PERSONAL PROPERTY TAX CREDIT	49.86	
BUTLER COUNTY TREASURER		
MOTOR VEHICLE TAXES	95.14	
FINES & LICENSES	19.73	
PERSONAL PROPERTY TAX CREDIT	48.28	
STATE OF NEBRASKA		
TITLE 11A	16,258.00	
IDEA	10,037.00	
EDUCATIONAL SERVICE UNIT NO 2		
TITLE 1 REIMBURSEMENT - AUGUST	3,271.00	
SUBSTITUTE REIMBURSEMENT - GRANT	3,780.00	
RCPS HOT LUNCH FUND		
AUGUST PAYROLL	10,267.44	
RCPS IMPREST ACCOUNT		
AUGUST REIMBURSEMENT	3,228.43	
VILLAGE OF CERESCO		
LIQUOR AND TOBACCO LICENSE FEE	705.00	
NEBRASKA COMMUNITY FOUNDATION GRANT		
BASTIAN & DUNKER GRANT	1,492.47	
EDUCATIONAL SERVICE UNIT NO 6		
CARL PERKINS GRANT	500.00	
OAK CREEK VALLEY BANK		
GENERAL FUND INTEREST - AUGUST	1,353.50	
IMPREST INTEREST - JULY & AUGUST	14.03	
	TOTAL AUGUST RECEIPTS	1,061,794.89
	TOTAL RECEIPTS	3,699,432.05
	AUGUST DISBURSEMENTS	1,416,966.77
SEPTEMBER 1, 2017 BANK BALANCE	2,282,465.28	

WE RECEIVED A TOTAL OF \$6,425,477.33 IN PROPERTY TAXES FOR YEAR TO DATE.

RAYMOND CENTRAL PUBLIC SCHOOL
FINANCIAL STATEMENT - SEPTEMBER 1, 2017

GENERAL FUND

Cash Balance - August 1, 2017		\$2,637,637.16
August Receipts		\$1,060,441.39
August Interest Earned		<u>\$1,353.50</u>
	Total August Receipts	\$3,699,432.05
August Disbursements		<u>\$1,416,966.77</u>
	Cash Balance - September 1, 2017	\$2,282,465.28

LUNCH FUND

Cash Balance - August 1, 2017		\$134,507.49
Deposits		\$33,478.40
ALA Carte, Milk, Kdg Milk, Snack & Other		\$5,400.51
Federal Reimbursement		\$0.00
State Reimbursement		\$0.00
Transfer from General Fund		\$2,500.00
Interest Earned on NOW Account		<u>\$47.36</u>
	Total August Receipts	\$175,933.76
Salaries		\$10,267.44
Other Purchases		<u>\$13,423.92</u>
	Total August Disbursement	\$23,691.36
	Cash Balance - September 1, 2017	\$152,242.40

SINKING FUND

Cash Balance - August 1, 2017		\$429,107.18
August Receipts		\$30,279.41
August Interest Earned		<u>\$143.26</u>
	Total August Receipts	\$459,529.85
August Disbursements		<u>\$165,695.92</u>
	Cash Balance - September 1, 2017	\$293,833.93
Certificate of Deposit + Interest		<u>\$529,473.62</u>
	Cash Balance - September 1, 2017	\$823,307.55

BOND FUND

Cash Balance - August 1, 2017		\$207,105.32
August Receipts		\$22,951.95
August Interest Earned		<u>\$121.28</u>
	Total August Receipts	\$230,178.55
August Disbursements		<u>\$0.00</u>
	Cash Balance - September 1, 2017	\$230,178.55

RAYMOND CENTRAL PUBLIC SCHOOL
FINANCIAL STATEMENT - SEPTEMBER 1, 2017

Page -2-

DEPRECIATION FUND

Cash Balance - August 1, 2017		\$344,688.64
August Receipts		\$392,100.00
August Interest Earned		<u>\$174.78</u>
	Total August Receipts	\$736,963.42
August Disbursements		<u>\$20,475.81</u>
	Cash Balance - September 1, 2017	\$716,487.61
Certificate of Deposit + Interest		<u>\$598,989.42</u>
	Cash Balance - September 1, 2017	\$1,315,477.03

QUALIFIED CAPITAL PURPOSE UNDERTAKING FUND

Cash Balance - August 1, 2017		\$63,892.00
August Receipts		\$5,257.87
August Interest Earned		<u>\$36.87</u>
	Total August Receipts	\$69,186.74
August Disbursements		<u>\$0.00</u>
	Cash Balance - September 1, 2017	\$69,186.74

HIGH SCHOOL BOND FUND

Cash Balance - August 1, 2017		\$449,815.66
August Receipts		\$108,614.19
August Interest Earned		<u>\$281.20</u>
	Total August Receipts	\$558,711.05
August Disbursements		<u>\$0.00</u>
	Cash Balance - September 1, 2017	\$558,711.05

EMPLOYEE BENEFIT FUND - UNEMPLOYMENT

Cash Balance - August 1, 2017		\$38,014.62
August Receipts		\$0.00
August Interest Earned		<u>\$4.84</u>
	Total August Receipts	\$38,019.46
August Disbursements		<u>\$0.00</u>
	Cash Balance - September 1, 2017	\$38,019.46
Certificate of Deposit + Interest		<u>\$15,450.83</u>
	Cash Balance - September 1, 2017	\$53,470.29

TAXES - 2016-2017

Taxes Budgeted	\$6,774,800.00
Taxes Received	<u>\$6,425,477.33</u>
Balance	\$349,322.67

10. Monthly Bills

Raymond Central Public Schools

Monday, August 21, 2017

	Payment Vendor	Invoice Description	Invoice Total
1	Alexandra Bastian	Reimburse NCE Conference Expenses	\$70.86
2	Alternative Service & Repair	08-A - Oil Change, Filters, Lube, Inspection, Replaced Air Dryer	\$788.97
3	Ann Egr	June-August Mileage	\$223.63
4	Ashland-Greenwood Music Boosters	Oxbow Marching Band Invitational Fee - Band - S	\$100.00
5	ASI	Payflex Administration Costs - August	\$96.00
6	Becky Studebaker	Annual Bus Washing	\$120.00
7	Bishop Business	Toner Purchases for District	\$2,673.00
8	Bluffs Sanitary Supply	Office Supplies - C - 13.50, V - 12.20, S - 23.40	\$49.10
9	Brad Breitzkreutz	Annual Bus Washing	\$120.00
10	Brian Dunker	Reimburse NCE Conference Expenses	\$40.91
11	Brooke L. Cheleen	Pre-School SPED Services	\$460.09
12	Butler Public Power District	Electricity - V	\$3,274.01
13	Casey Carriker	Mileage	\$226.84
14	Cengage Learning	Library Subscription - S	\$844.78
15	Christine Genrich	Instructional Supplies - C	\$213.67
16	Comfortechs	Replaced Control Board - AC - V	\$1,285.00
17	ComplianceSigns	Signs - S	\$152.50
18	Concordia University	Title 1 Conference Registration - V	\$99.00
19	Donald R. Prentice	Monthly Exterminating - C - 50.00, V - 50.00, S - 90.00	\$190.00
20	Eakes Office Solutions	Cleaning Supplies - C - 423.41, V - 130.47, S - 603.28	\$1,157.16
21	Educational Service Unit #2	Pre-School SPED Services	\$1,130.35
22	Educational Service Unit #3	Registration Workshop - Hoxmeier	\$20.00
23	Electronic Sound, Inc.	Clocks - S	\$483.31
24	Engineered Controls	Thermostats Repairs - C	\$642.00
25	Frey Scientific	Science Supplies - S	\$110.67
26	Genesis Contracting Group	Main Entrance Lettering	\$1,865.00
27	Govconnection, Inc.	Ink Cartridges for all Schools	\$2,786.02
28	Govconnection, Inc.	Technology Equipment - S	\$131.10
29	Green's Furnace & Plumbing Co., Inc.	Clean & Service Heat Pump - C	\$250.40
30	Inspro, Inc.	Annual Premium	\$111,776.00
31	James Marsh	Technology Supplies - S	\$170.08
32	JCD Repair	Ipad Repair - S	\$104.00
33	Jim Krutz	Percussion Repairs & Drumline Camp - Band - S	\$246.00
34	Johnson Hardware Co.	Building Upkeep Supplies - S	\$91.20
35	JourneyEd.com. Inc.	Computer Software Updates - C - 360.00, V - 360.00, S - 1,080.00	\$1,800.00
36	Kiner Supply Company	Building Upkeep Supplies - S	\$66.56
37	Leann Wiese	Annual Bus Washing	\$120.00
38	Mark A. Connett	Repair to Puncture, Open Seam Intersection and Wall Seam - C	\$145.00
39	Master Lock Company	Master Lock Keys - HS Addition	\$52.88
40	Matt Smith	Annual Bus Washing	\$240.00
41	Menards Lincoln	Building Upkeep Supplies - C -162.08, S - 280.73	\$442.81
42	Midwest Office Automations	Copier Leases	\$1,228.00

43	Midwest Pump & Equipment Co.	Repaired Unleaded System That Would Not Pump Fuel - Bus Expense	\$629.00
44	Mr. Amoto Lawn & Tree Service	Elm Removal - Ceresco	\$2,050.00
45	NACIA	Membership - Dostal	\$15.00
46	Nasco	Science Supplies - S	\$146.92
47	NE DOL/Boiler Inspection Program	Boiler Inspections - C - 24.00, V - 24.00, S - 96.00	\$144.00
48	Nebraska Council Of School Adm	Labor Relations Conference - Supt	\$75.00
49	Nebraska Public Health Environmental Laboratory	Water Tests - S	\$282.00
50	Nebraska State Patrol	Criminal Checks - New Employees	\$100.00
51	Neco Security	Security Monitoring - V - 108.00, S - 72.00	\$180.00
52	Norris Public Power	Electricity - S	\$13,800.64
53	Office Depot	Printer - Technology - S	\$119.99
54	Pam Rasmussen	Chemistry Text Books - S	\$65.76
55	Paul E. Hass, JR	Annual Bus Washing	\$120.00
56	Paul L. Kess, Inc.	Filters - C	\$910.00
57	Randall J. Rieck	Rock for Driveway - S	\$855.12
58	Rcps Depreciation Fund	Furniture & Equipment - C - 2,000.00, V - 3,000.00, S - 5,000.00, Choir Robes - 6,500.00, Art Text Books - 1,600.00, Building Repairs - C - 50,000.00, S - 50,000.00, Technology Updates - 59,000.00	\$177,100.00
59	Rcps Hot Lunch	Transfer	\$2,500.00
60	Rcps Imprest Account	August Reimbursement	\$15,898.78
61	Really Good Stuff, Inc.	SPED Supplies - S	\$67.43
62	Rhonda Madsen	Annual Bus Washing	\$120.00
63	Saunders County Youth Services	Annual Fee	\$614.00
64	Sentry Electric, Inc.	Repair Chime for Door Bell - S	\$146.93
65	Seth Strouf	Choir Supplies - S	\$44.67
66	Shelly Dostal	Inservice Supplies - 401.68, Chairs for 6th grade - 197.76	\$599.44
67	Sherwin-Williams	Building Upkeep Supplies - S	\$134.47
68	Steve Rose	Technology Supplies - C	\$266.24
69	Supplyworks	Pressure Washer - Bus Expense	\$89.70
70	Teaching Strategies LLC	SPED - 284.70, Instructional - 328.50, Pre-School Curriculum - 3,432.41	\$4,045.61
71	TechMasters Heating & Air	A/C Repairs - V	\$1,549.44
72	Textbook Warehouse	American History Textbooks - S	\$262.00
73	Textbook Warehouse	Geometry Textbooks - S	\$1,498.50
74	US Bank	Textbooks - Art - S	\$228.99
75	Verizon Wireless	Cellular Phones - Technology - 41.66, Maintenance - 38.54	\$80.20
76	Village Of Ceresco	Water - 110.00, Sewer - 74.30, Garbage - 88.00 - C	\$272.30
77	Wahoo-Waverly-Ashland Newspaper	Publication	\$9.25
78	Waste Connections Co	Garbage Service - S	\$264.00
79	Waverly News	Renewal - Library - S	\$62.00
80	Windstream	Phones - C - 182.03, S - 460.46, Supt - 193.40	\$835.89
			\$362,270.17

Depreciation Fund			
1	DLR Group	HS Addition	\$ 2,665.80
2	Olsson Associates	HS Addition	\$ 95.00
			\$ 2,760.80
Hot Lunch Fund			
1	Hockenbergs	Supplies for Pre-School	\$ 227.45
2	Patty Hudson	Supplies	\$ 670.23
3	US Bank	Wall Mount Brackets - Grant	\$ 99.99
			\$ 997.67

Hot Lunch			
1	Cash-Wa Distributing	V - 47.83, S - 352.43	\$ 400.26
2	Dean Foods	C - 232.53, V - 308.80, S - 406.83	\$ 948.16
3	Hockenbergs	C - 138.83, S - 8.06	\$ 146.89
4	Jackson Services	C - 28.52, V - 29.56, S - 20.06	\$ 78.14
5	James Marsh	Monitor - Grant Funds - C	\$ 158.24
6	Sysco Lincoln	C - 1,091.51, V - 1,061.95, S - 2,202.20	\$ 4,355.66
7	Thompson Co.	S	\$ 668.85
			\$ 6,756.20

RAYMOND CENTRAL PUBLIC SCHOOLS
August Imprest Checks 2017

WHO	DATE	VENDOR	WHAT	AMOUNT
Unleaded	8/2/2017	Farmers Coop	Unleaded Gas	3,154.20
Bus Diesel	8/2/2017	Farmers Coop	Bus Diesel	5,251.75
Heating Fuel	8/2/2017	Farmers Coop	Heating Fuel - S	4,726.75
Furniture	8/15/2017	Addison Kenning	Teacher's Chairs	332.45
Cross Country	8/16/2017	East Butler	Entry Fees	70.00
Softball	8/16/2017	Freeman High School	Entry Fees	120.00
Softball	8/16/2017	Auburn Public School	Entry Fees	110.00
Supt's Office	8/23/2017	Ne Secretary of State	Notary Commission	30.00
Softball	8/23/2017	Fillmore Central	Entry Fees	80.00
General	8/31/2017	RCPS Dist #161	Reimburse	3,228.43
Field Trips	8/3/2017	RCPS Dist #161	Reimburse Val Field Trips	(441.38)
Field Trips	8/3/2017	RCPS Dist #161	Reimburse Ceresco Field Trips	(123.75)
College Access	8/3/2017	RCPS Dist #161	Reimburse College Visits	(348.81)
Class 2017	8/3/2017	RCPS Dist #161	Reimburse Field Trip	(64.46)
FBLA	8/3/2017	RCPS Dist #161	Reimburse Field Trip	(92.98)
Speech	8/3/2017	RCPS Dist #161	Reimburse Field Trip	(23.42)
				16,008.78

RAYMOND CENTRAL PUBLIC SCHOOLS
August Activity Checks 2017

WHO	DATE	VENDOR	WHAT	AMOUNT
Val Field Trips	8/1/2017	RCPS	2016-2017 Field Trips	441.38
Ceresco Field Trips	8/1/2017	RCPS	2016-2017 Field Trips	123.75
Athletics	8/1/2017	Wahoo High School	Baseball 2016/2017	3,452.09
Softball	8/1/2017	Columbus Screen Printing	Apparel	1,411.00
Softball	8/1/2017	Nicole Kliment	Total Control Balls	184.43
Pre-Kindergarten	8/1/2017	Sarah Bos	Jumpstart	270.00
Pre-Kindergarten	8/1/2017	Erica Carlson	Jumpstart	90.00
College Access Gran	8/1/2017	RCPS Dist #161	College Visits	348.81
Class 2017	8/1/2017	RCPS Dist #161	Senior Trip	64.46
FBLA	8/1/2017	RCPS Dist #161	Mahoney State Park	92.98
Speech	8/1/2017	RCPS Dist #161	Mahoney Field Trip	23.42
RC Concessions	8/3/2017	Ceresco Bank	Extra change bags	400.00
Athletics	8/3/2017	Ceresco Bank	Gate Bags	1,500.00
RC Concessions	8/3/2017	Ceresco Bank	Concession Bags	1,400.00
Athletics	8/3/2017	Lou's Sporting Goods	SB Pants	895.49
PTO	8/7/2017	School Datebooks, Inc.	School Planners 2017-18	340.70
Speech	8/7/2017	Carolyn Enevoldsen	Cabins	416.50
Wrestling	8/8/2017	RBS Activewear	Polos	193.20
Athletics	8/11/2017	Joel Kruse	SB 8/17	115.00
Athletics	8/11/2017	Jeff Sweeney	SB 8/17	115.00
FFA	8/15/2017	Casey Carriker	Supplies	136.01
Softball	8/15/2017	Fundraising University	Cookie Dough	4,719.60
Student Pop	8/15/2017	US Bank	Rubber Stamps	329.82
Pre-Kindergarten	8/15/2017	Schoolsin	Rug	426.40
Pre-Kindergarten	8/15/2017	Really Good Stuff, LLC	Supplies	286.79
Kindness Acct	8/15/2017	Miranda Hornung	Work Plant Sale	30.00
Kindness Acct	8/15/2017	Amber Heyen	Work Plant Sale	30.00
Kindness Acct	8/15/2017	Ann Egr	Refund 2 plants	12.00
Kindness Acct	8/15/2017	Pre-Kindergarten	Transfer	4,029.79
Athletics	8/16/2017	Mark Hickson	FB 8/17	55.00
Athletics	8/16/2017	Tyler Fitzke	FB 8/17	55.00
Athletics	8/16/2017	Steve Nelson	FB 8/17	55.00
Athletics	8/16/2017	Jeremy Foote	FB 8/17	55.00
Athletics	8/16/2017	Adam Burmood	FB 8/17	55.00
Athletics	8/16/2017	Paul Keeney	VB Jamboree 8/21	45.00
Athletics	8/16/2017	Chuck Gubbels	VB Jamboree 8/21	45.00
Elem Prof Developme	8/17/2017	Ann Egr	Workshop	135.00
Elem Prof Developme	8/17/2017	Heather Bohac	Workshop	135.00
Elem Prof Developme	8/17/2017	Laci Pebley	Workshop	135.00
Elem Prof Developme	8/17/2017	Kim Hudson	Workshop	135.00
Elem Prof Developme	8/17/2017	Diane Ahlstrand	Workshop	135.00
Elem Prof Developme	8/17/2017	Nikole Farr	Workshop	135.00
Elem Prof Developme	8/17/2017	Christine Genrich	Workshop	135.00
Elem Prof Developme	8/17/2017	Crystal Haecker	Workshop	135.00
Elem Prof Developme	8/17/2017	Meredith Hoxmeier	Workshop	135.00
Elem Prof Developme	8/17/2017	Shelly Dostal	Workshop	135.00
Elem Prof Developme	8/17/2017	Kendra Carlson	Workshop	135.00
Elem Prof Developme	8/17/2017	Jamie Enevoldsen	Workshop	135.00
Elem Prof Developme	8/17/2017	Cindy Peterson	Workshop	135.00
Elem Prof Developme	8/17/2017	Barb Schiefen	Workshop	405.00
Elem Prof Developme	8/17/2017	Erin Brewer	Workshop	135.00

WHO	DATE	VENDOR	WHAT	AMOUNT
Elem Prof Developme	8/17/2017	Megan Brown	Workshop	135.00
Elem Prof Developme	8/17/2017	Shelly Hlavaty	Workshop	135.00
RC Concessions	8/18/2017	Sam's Club	Supplies	521.64
TFK-Valparaiso	8/22/2017	Time for Kids	Subscription	846.67
TFK-Ceresco	8/22/2017	Time for Kids	Subscription	193.05
Exxon Mobil Grant	8/22/2017	Christine Genrich	Headphones	175.00
Athletics	8/22/2017	Nebraska Sports	Supplies	50.97
Softball	8/22/2017	Nebraska Sports	Helmets	553.40
Val Box Tops	8/22/2017	Petty Cash	Box Tops Labels	11.86
Athletics	8/22/2017	Awards Unlimited, Inc.	Plaques	64.80
College Access Gran	8/22/2017	SCC Bookstore	Eng Books	1,138.95
Cheerleaders	8/22/2017	Connie Hansen	Alterations	75.00
Student Pop	8/22/2017	Kolin Haecker	Eclipse Glassess	128.06
Athletics	8/22/2017	John A. Gale	Logo	100.00
Exxon Mobil Grant	8/22/2017	Heather Bohac	Supplies	215.65
TFK-Ceresco	8/22/2017	Heather Bohac	Supplies	215.65
Cheerleaders	8/22/2017	Augstums Printing Service, Inc.	Calendars	900.00
FFA	8/23/2017	NVAA District 2	Dues	150.00
FFA	8/23/2017	Awards Unlimited, Inc.	Plaques	57.50
Student Pop	8/23/2017	US Bank	Lanyards	110.00
Student Pop	8/23/2017	US Bank	Rubber stamps	219.82
Student Pop	8/23/2017	Tasha Osten	Rubber Stamp	10.98
Athletics	8/23/2017	Nebraska High School Sports Hall c	VB Jamboree	392.00
RC Concessions	8/23/2017	JH Football	VB Concessions 8/21	63.46
Annual	8/23/2017	Walsworth	2016-17 yearbooks	2,495.45
RC Concessions	8/23/2017	Sysco Lincoln	Supplies	15.85
RC Concessions	8/23/2017	Pepsi-Cola of Lincoln	Pop	291.75
RC Concessions	8/23/2017	Del Gould Meat Co., Inc.	Hot Dogs	167.96
JH Football	8/24/2017	Corey Serrano	Volunteer Coach	325.00
RC Foundation	8/24/2017	C-K Katering	Foundation Dinner	4,263.75
HS Pop	8/24/2017	Delores K. Smith	Newman Baby Gift	40.00
Athletics	8/25/2017	NSAA	NSAA Rules Books	32.00
Student Council	8/25/2017	Complete Weddings and Events	Homecoming DJ	395.00
RC Concessions	8/28/2017	Del Gould Meat Co., Inc.	Hamburgers/Hot Dogs	227.59
RC Concessions	8/28/2017	Greg Wilmes	Staff Picnic	36.24
Athletics	8/28/2017	NIAAA	Membership	210.00
RC Concessions	8/28/2017	Sysco Lincoln	Nachos	31.70
RC Concessions	8/28/2017	Sam's Club	Supplies	1,033.04
Athletics	8/28/2017	Dan Oberembt	SB 8/29	60.00
Athletics	8/28/2017	Bob Barrientos	SB 8/29	60.00
Athletics	8/29/2017	Nebraska Sports	FB Pants	66.15
Football	8/29/2017	Corey Serrano	Assistant Volunteer	300.00
Cheerleaders	8/29/2017	Varsity Spirit Fashion	Apparel	624.45
Hot Lunch	8/31/2017	Hot Lunch	Transfer	7,972.55
				49,651.56

RAYMOND CENTRAL PUBLIC SCHOOLS
August Activity Balances 2017

NAME	BEGINNING BALANCE	RECEIPTS	DISBURSEMENTS	BALANCE
Annual	2,312.13	1,120.00	2,495.45	936.68
AP Funds	14,479.90			14,479.90
Athletics	133,739.56	13,486.54	7,478.50	139,747.60
Autism Grant	76.91			76.91
Band	615.22	280.00		895.22
Band Trip	8,185.05			8,185.05
Boys BB	483.82			483.82
Ceresco Book Fair	285.16			285.16
Ceresco Box Tops	1,275.89			1,275.89
Ceresco Field Trips	308.86	603.86	123.75	788.97
Ceresco Playground	2,891.75			2,891.75
Ceresco Pop	214.30			214.30
Cheerleaders	2,450.91	1,497.50	1,599.45	2,348.96
Choir	14,119.91			14,119.91
Class 2017	91.79		64.46	27.33
Class 2018	232.84	420.00		652.84
Class 2019	1,750.44	300.00		2,050.44
Class 2020	558.85			558.85
Class 2021	137.00	260.00		397.00
Class 2022	60.00			60.00
College Access Grant	(58.85)		1,487.76	(1,546.61)
Concessions	16,572.69			16,572.69
Cross Country	433.32			433.32
DI	4,200.67			4,200.67
Drama	2,294.60			2,294.60
Drill Team	1,049.20	2,165.70		3,214.90
Elem Fines	300.56			300.56
Elem PE	167.50			167.50
Elem Pictures	1,096.15			1,096.15
Elem Prof Development	6,000.00		2,565.00	3,435.00
Elem Reading Promotion	649.85			649.85
Elem Student Council	253.73			253.73
Exxon Mobil Grant	1,119.65		390.65	729.00
FBLA	2,874.59		92.98	2,781.61
FFA	(61.06)	87.99	343.51	(316.58)
Fine Arts	3.83			3.83
Fines	423.77	3.00		426.77
Football	491.67	4,955.00	300.00	5,146.67
Future Educators Assn	133.95			133.95
Girls BB	1,241.13			1,241.13
Golf Activity	1,158.59			1,158.59
HAL	263.45			263.45
Hot Lunch	0.00	7,972.55	7,972.55	0.00
HS Computer	2,248.84	300.00		2,548.84
HS Pop	1,631.94		40.00	1,591.94
JH Boys BB	35.21			35.21
JH Football	337.00	63.46	325.00	75.46
JH Girls BB	161.49			161.49
JH Student Council	203.55			203.55
JH Track	84.98			84.98
JH Volleyball	476.33			476.33
JR Achievement	649.57			649.57
Kindness Acct	18,001.37		4,101.79	13,899.58
Library	2,031.23			2,031.23

NAME	BEGINNING BALANCE	RECEIPTS	DISBURSEMENTS	BALANCE
Mock Trial	380.96			380.96
National Honor Society	57.61			57.61
Pre-Kindergarten	1,885.38	4,029.79	1,073.19	4,841.98
PTO	1,006.78		340.70	666.08
Rain Garden	607.00			607.00
RC 50th Celebration	2,291.96			2,291.96
RC Concessions	2,441.64	210.25	4,189.23	(1,537.34)
RC Foundation	2,975.00	4,263.75	4,263.75	2,975.00
RC PACTS	376.16			376.16
Restitution	188.00			188.00
SADD	91.11			91.11
Social Justice	298.87			298.87
Softball	3,487.63	9,030.00	6,868.43	5,649.20
Spanish Club	422.45	50.00		472.45
Speech	4,321.11		439.92	3,881.19
Staff Inservice	1,372.94			1,372.94
Student Council	5,888.12		395.00	5,493.12
Student Pop	1,801.73		798.68	1,003.05
Testing	4,575.23			4,575.23
TFK - Ceresco	1,554.09	8.00	408.70	1,153.39
TFK - Valparaiso	5,275.14		846.67	4,428.47
Tonettes	159.86			159.86
Track	244.63			244.63
Val Assignment Book	0.00			0.00
Val Book Fair	6,867.14			6,867.14
Val Box Tops	3,403.81		11.86	3,391.95
Val Field Trips	4,002.81	441.38	441.38	4,002.81
Val In-Service	1,512.59			1,512.59
Val Movie Night	3,161.15			3,161.15
Val Office Book Fund	953.25			953.25
Val Pop	1,218.90			1,218.90
Val Sower Club	182.28			182.28
Val Technology	0.00			0.00
Volleyball	3,291.18	21.00		3,312.18
Weight Room	49.00			49.00
Wrestling	1,677.02		193.20	1,483.82
	318,763.32	51,569.77	49,651.56	320,681.53

RAYMOND CENTRAL PUBLIC SCHOOLS
August Student Fees Balances 2017

NAME	BEGINNING BALANCE	RECEIPTS	DISBURSEMENTS	BALANCE
Activity Pass	250.00	165.00		415.00
Ag-Ed Labs	(1,383.42)	1,454.76		71.34
Art Class	36.52	280.00	46.97	269.55
Band Dry Cleaning	44.01	55.00		99.01
Band Repair/Rental	975.64	210.00	125.45	1,060.19
Choir Dry Cleaning	52.60	40.00		92.60
Drama	396.00			396.00
FBLA	16.06	50.00		66.06
FFA	293.84	1,350.00		1,643.84
Foods Class	1,531.72	125.00		1,656.72
Mock Trial	450.01			450.01
NFL	15.00			15.00
Skills USA	69.62			69.62
Speech	9.92	150.00		159.92
Sports Fees	7,564.18	6,195.67	7,564.18	6,195.67
Tech Ed	280.19	835.00	295.47	819.72
	10,601.89	10,910.43	8,032.07	13,480.25

RAYMOND CENTRAL PUBLIC SCHOOLS
August Student Fees 2017

WHO	DATE	VENDOR	WHAT	AMOUNT
Sports Fees	8/3/2017	Athletics	Transfer	7,564.18
Band Repair/Rental	8/22/2017	Dietze Music	Repairs	125.45
Tech Ed	8/22/2017	Menards	Supplies	45.47
Tech Ed	8/24/2017	CareerSafe Online	Class	250.00
Art Class	8/29/2017	Jean Rempfer	Supplies	46.97
				8,032.07

11. Correspondence/Recognition
12. Public Forum
13. Discussion Items
14. Administrative Reports

Activities Director/Assistant Principal Board Meeting Notes 9-13-17

- Fall activities are now underway, so hold onto your hats!
- Football has opened up with losses at Aquinas and home vs Boys Town, and will host DC West for homecoming on 9-8, before finishing non-district play at Syracuse on 9-15. JV football has lost a close one at Wilber-Clatonia, and will host Ashland-Greenwood on Monday 9-11.
- JH football starts their season Thursday 9-7 @ Lincoln Lutheran and then travel to Lincoln Christian on 9-12. They have 13-7th and 13-8th graders out.
- JH VB starts their season Thursday 9-7 hosting DC West.
- Volleyball has started their season, with a tough loss to York in the jamboree game, and losses to Lincoln Lutheran and Wahoo. They traveled to Plattsmouth on Sat 9-2 and lost to Platteview, Nebraska City and Plattsmouth. They travel to DC West on 9-5 before heading to North Bend Central for a small tourney on Sat 9-9.
- CC has traveled to East Butler, Beatrice, and now Wahoo on Thursday 9/7. Times were greatly improved from East Butler to Beatrice, and hoping the same for Wahoo. Austin Anderson has won both of his JH races.
- Softball continues to stay busy. They most recently won the Fillmore Central Invite (3-0) and finished runner-up at the Auburn Invite (2-1). They hosted Arlington and Platteview on 9/5 and won both, and now host a tough triangular with Malcolm and Tekamah-Herman on Saturday 9/9. Currently, as of 9/6, they are 15-4 on the season.
- Our final pads for the gym were delivered as of 9/1. They will go on the two pillars on each end of the stage to cover up the corners. Mr. Harrington's class is going to finalize things by attaching them to the wall. Once more, a big thanks to him and his students for the time they have put into the gym.
- Homecoming football game is Friday 9/8, with the dance taking part afterwards in the commons.
- We have been selected to host district softball on Thursday and Friday Oct 5-6, as well as a D1 volleyball sub-district on Monday/Tuesday Oct 30th/31st. Two new fences for the softball fields were purchased with VABA and the school each paying for one.
- Believers and Achievers nominees for the school were Brandon Unverferth and Cicely Pickel. We will see later from the NSAA if they were selected as state winners!

September 7, 2017

To: Dr. Joel and the Raymond Central Board of Education

From: Ann Egr - Ceresco Principal and Director of Special Education

1. The school year is off to a great start!
2. The PTO fundraiser is underway. The final date for sales is September 13. The kids are doing an excellent job.
3. The week of September 5-8, the students are encouraged to show their school spirit by participating in Homecoming week festivities.
4. The Food Bank Backpack Program started September 8. This program is a valuable service to Raymond Central families. Thank-you to all of the volunteers who pack the bags each week, and to all who donate to the program each year. . . your contributions are appreciated. Please mark your calendars for the annual fundraiser, The Hustle, on October 28.
5. Christine Genrich will be running the homework club again this year. It is scheduled to begin on September 11 from 3:15-4:00. This useful program is part of our student support system.
6. Raymond Central is a generous community and wants to help after the devastating disaster Hurricane Harvey. The elementary will be conducting a coin drive September 5-8. Each classroom will have a change jar for collection. The change collected will be sent to the American Red Cross as a donation from Raymond Central Elementary.
7. Training - On August 31 and September 1 Mrs. Dostal and myself attended the MTSS/RTI training sponsored by NDE. RTI is practices used to determine eligibility for Special Education. MTSS is a service delivery system based on concept that some students require early and powerful general education interventions of increasing intensity.

Board Items from the High School Principal/Curr. Director (September)

1. We are off to a great year. Thanks to all of the staff and faculty for such a great start.
2. We have 49 students enrolled in 90 college classes.
3. Congratulations to the FFA students who participated in the State Fair. Here are the award winners:

FFA State Fair Results:

Kale Strizek

Grand Champion Purebred Market Gilt
Reserve Champion Crops

Nick Nelson

Reserve Champion Purebred Breeding Gilt
Reserve Champion Purebred Market Gilt

Duke Nelson

Reserve Champion Purebred Market Gilt

Jack Nelson

Reserve Champion Poland Breeding Gilt

Skylar Sterns

Reserve Champion Market Heifer

4. Ten FFA students are headed off to Husker Harvest Days on Wednesday, Sept. 13.
5. We have several test dates scheduled for our students. The Juniors will be taking the PSAT test on Oct. 11. MAP testing for grades 6-9 will be the week of September 17, 2017
6. October 18, we will be taking the seniors on a college visit. The seniors will go to UNL, SCC-Lincoln as well as other schools they are interested in attending. The juniors will attend the College fair at Beatrice in the morning and then go to Doane in the afternoon on Oct. 4.
7. Homecoming is scheduled for September 8. Royalty will be at 6:30 with the dance following the game. The 2017 Candidates are:

Heyen	Ashley	Boyd	Nathaniel
Jones	Kylee	Burkland	Jett
Komenda	Holly	Fowler	Jackson
Nacke	Mine	Hughes	Emmett
Pickel	Cicely	Nelson	Duke
Stover	Madison	Randall	Tucker

Mr Mustang candidates:

Nathan Boyd, Joe Coulter, Jackson Fowler, Riley Robbins, Duke Nelson & Tucker Randall

8. Cicely will be giving her report at the meeting.
9. Guidance: Great start to the school year! Our new students are settling into their new home at Raymond Central. Sixth and Seventh graders are transitioning well. Seniors are engaging in discussion regarding post-secondary plans.

Board Items from the High School Principal/Curr. Director (September)

College Prep -

Mini College/Career Fair will be September 12, during 5th hour.

Apply to College Day for our seniors is Sept 18- students will be given time and support in completing applications and registering for Scholarshipquest

Financial Aid Meeting with Education Quest on Sept. 20th

September 6, 2017

To: Dr. Joel and Raymond Central Board of Education

From: Shelly Dostal, Elementary Principal at Valparaiso, and Curriculum Director for K-5

RE: Principal's Report

1. Curriculum/Instruction – Teachers have developed daily routines and procedures for their classrooms as well as curriculum pacing schedules for the year. DIBELS Next assessments are complete and progress monitoring and interventions are beginning. The new materials for ELA, Wonders, are being implemented for grades K-5. Grades 6-8 are implementing Study Sync. In addition, K-1 has started using the new EnVision 2.0 materials for math. Teachers are spending more time preparing and planning as they use the materials for the first time.
2. Curriculum/Instruction - DARE, a drug and alcohol resistance program coordinated by the Saunders County Sheriff's Department, has started. Thank you to Deputy Thomas Janecek for leading the lessons for our 5th grade classrooms. Homework Club and Band lessons are starting, too.
3. Assessment Update – I will be attending meetings in October for NDE updates about assessment. Special thanks to Nikole Farr who will be the teacher representative for RC at the NDE workshop for item content and bias review in September. The latest news from NDE about assessment data is that it will be available in late September. Mr. Haecker and I will share district data with staff when it becomes available. We will plan to share district data with you at the board meeting in October. The plan will be for families to receive their individual student's report for NeSA at Parent-Teacher Conferences at the High School or with their Parent-Teacher Conference note for elementary students as long as the reports are available.
4. Advanced Ed/School Improvement – The committee met on August 28 to finalize the goals for the year and discuss professional learning time plans. The Committee will be meeting again on September 12 at 7am.
5. Professional Learning – The faculty met on August 29 for professional learning time. Dr. Joel encouraged each teacher to have one word for the year which they can use as a motto for the year. Teachers wrote a note to a student, too. Dr. Joel reviewed PRIDE evaluation and shared goals for the year. Dr. Gary Nunnally led a refresher about GANAG and the High Yield Strategies and introduced information about differentiation.
6. Professional Learning - Mrs. Egr and I attended the NDE Workshop - Ensuring Quality MTSS/Rtl Implementation Conference on August 31 and Sept. 1. Sessions I attended focused on tier support, explicit instruction, and implementing MTSS with fidelity. I will be attending NACIA (Curriculum Director's) meetings on October 5 and 6.
7. Patriot Day Observance –On Sept. 11, all students and staff will gather around the flag pole for a short ceremony in observance of Patriot Day. Students are encouraged to wear red, white, and blue to show their patriotism. The student body will recite the Pledge of Allegiance, and we will play the Star-Spangled Banner. Teachers will observe Patriot Day in their classrooms with a variety of lessons.
8. RC PTO – Jennifer Schultz is the PTO chair. In conjunction with Believe Kids, the annual fundraiser kicked off on August 30 and ends on Sept. 13. Families can continue to order online throughout the year to benefit our school. PTO will sponsor a family night at Raising 'Canes on Thursday, Sept. 7. A percentage of the sales will go to the PTO.

9. Other Happenings at Valparaiso:

- a. The Food Bank Backpack Program will start distribution of backpacks each Friday beginning on Sept. 8. We thank Immanuel Lutheran Church in Ceresco for their continued support of housing and organizing the packing each week. The Committee is organizing the fundraising event for the year. The Hustle, a fun run/walk of 1 mile or 5K or 10K run, is scheduled for Oct. 28 along the Oak Creek Trail in Valparaiso. A pancake feed is being planned to coincide with the run. We hope to see you there!
- b. We have picture day on September 7. Lifetouch will provide the photography services at the elementary schools.
- c. Elementary Students is participating in Homecoming Week festivities. We will have character day, color day, dress up for picture day, and Mustang Spirit day.

15. Curriculum Report
16. Superintendent's Report - First Review of Mutual Goals
17. Develop a visible presence within the schools, the school community, and state.

Goal #1: Develop a visible presence within the schools, the community, and the media
Holidays in United States

	Mon 7/3	Tue 7/4	Wed 7/5	Thu 7/6	Fri 7/7
		Independence Day			
7am					
8am					
9am					
10am					
11am					
12pm					
1pm					
2pm					
3pm					
4pm					
5pm					

**Goal #1: Develop a visible presence within the schools, the school community, and the
Holidays in United States**

	Sat 7/8	Sun 7/9	Mon 7/10	Tue 7/11	Wed 7/12
9am				Meeting with Randy Nelson 9am - 10am	
10am				Retirement Meeting 10:30am - 4pm	
11am					
12pm					
1pm					
2pm					
3pm					
4pm					
5pm					
6pm					
7pm				Val Village Board Meeting 7pm - 8:30pm	
8pm					

**Goal #1: Develop a visible presence within the schools, The school community, and the
Holidays in United States**

	Thu 7/13	Fri 7/14	Sat 7/15	Sun 7/16	Mon 7/17
12pm					
1pm					
2pm					
3pm					
4pm		Meet with John and Brian (Norris) 4pm - 7pm			
5pm					
6pm					
7pm					
8pm					
9pm					
10pm					
11pm					

Goal #1: Develop a visible presence within the schools, the school community, and the public
Holidays in United States

Tue Jul 18 - Sat Jul 22, 2017 (Central Time)

	Tue 7/18	Wed 7/19	Thu 7/20	Fri 7/21	Sat 7/22
7am			New Superintendent Orientation @ 215 Centennial Mall S, Lincoln, NE 68508, USA 6:30am - 3pm		
10am					
11am		Nebraska Association of School Board Member Orientation @ 1311 Stockwell St Lincoln, NE 68502, USA 10:30am - 3pm			
12pm					
1pm					
2pm					
3pm					
4pm					
5pm					
6pm					
7pm	Open Meetings Law @ The Career Acadmy, 8600 O St, Lincoln, NE 68520, USA 6:30pm - 8:30pm				
8pm					

**Goal #1: Develop a visible presence within the schools, Sun Jul 23 - Thu Jul 27, 2017 (Central Time)
, Holidays in United States**

	Sun 7/23	Mon 7/24	Tue 7/25	Wed 7/26	Thu 7/27
				Administrator Days - Kearney Nebraska	
8am					
9am					
10am			NRCSA Golf Tournament @ Meadowlark Hills Golf Course, 3300 30th Ave, Kearney, NE 68845, USA 9:30am - 2:30pm		
11am					
12pm		TeamMates Conference (Innovation Campus, Lincoln) Lunch at NOON @ 2021 Transformation Dr, Lincoln, NE 68508 12pm - 4:30pm			
1pm					
2pm					
3pm					
4pm					
5pm					
6pm					

**Goal #1: Develop a visible presence within the schools, the school community, and the
Holidays in United States**

	Fri 7/28	Sat 7/29	Sun 7/30	Mon 7/31	Tue 8/1
	Administrator Days - Kearney Nebraska				
6am					
7am					
8am					
9am					
10am					Meeting w/ Dave Bayne from AI Solutions at Ceresco Elementary @ Ceresco Elementary 10am - 12pm
11am					
12pm					
1pm					
2pm					
3pm					
4pm					

Goal #1: Develop a visible presence within the schools Wed Aug 2 – Sun Aug 6, 2017 (Central Time)
Holidays in United States

	Wed 8/2	Thu 8/3	Fri 8/4	Sat 8/5	Sun 8/6
10am					
11am					
12pm					
1pm		Lunch with Dr. Gary Nunnally Applebees on N 27th @ Applebee's, 3951 N 27th St, Lincoln, NE 68521, USA 12pm - 1:30pm			
2pm					
3pm					
4pm					
5pm					
6pm					
7pm	TeamMates Mentoring Meeting 7pm - 8pm				
8pm					
9pm					

Goal #1: Develop a visible presence within the schools **Mon Aug 7 – Fri Aug 11, 2017 (Central Time)**
, Holidays in United States

	Mon 8/7	Tue 8/8	Wed 8/9	Thu 8/10	Fri 8/11
6am					
7am					
8am					
9am	WONDERS Training at Ceresco Elementary (Lunch at 11:45) @ Ceresco Elementary (Lunch 8:30am - 3pm)				Terry from Air Fluid Management (Ceresco Elementary) 8:30am - 10am
10am			PK-6th Tour with Sara Fritsch 10am - 11am		Meet with Mike Eden 10am - 11am
11am					
12pm					
1pm					Meet with Dan Endorf at Chip's @ Chip's 1pm - 3:30pm
2pm					
3pm					
4pm					
5pm					

Goal #1: Develop a visible presence within the school and school community, 2017 (Central Time)
, Holidays in United States

	Sat 8/12	Sun 8/13	Mon 8/14	Tue 8/15	Wed 8/16
8am			First Day Back with Staff 8am - 2pm		
9am					
10am					
11am					
12pm					
1pm					
2pm					
3pm					
4pm					
5pm					
6pm			Valpo and Ceresco 1st - 5th Grade Open House 6pm - 7pm	6th - 7th Grade Open House (High School) 6pm - 7pm	
7pm					

Goal #1: Develop a visible presence within the school community **Thu Aug 17 - Mon Aug 21, 2017 (Central Time)**
Holidays in United States

	Thu 8/17	Fri 8/18	Sat 8/19	Sun 8/20	Mon 8/21
12pm					
1pm					
2pm					
3pm					
4pm					
5pm					
6pm		Raymond Central Foundation Prime Rib Dinner 6pm - 9pm			
7pm	Gatorade Football Scrimmage 7pm - 8:30pm				Home Volleyball Game vs. York 7pm - 8:30pm
8pm					
9pm					
10pm					
11pm					

Goal #1: Develop a visible presence within the schools Tue Aug 22 - Sat Aug 26, 2017 (Central Time)
Holidays in United States

	Tue 8/22	Wed 8/23	Thu 8/24	Fri 8/25	Sat 8/26
8am					
9am					
10am					
11am					
12pm					
1pm		Meet with Scott Larson 1pm - 2pm			
2pm			Meet with ESU Dr. Ted DeTurk 1:30pm - 2:30pm		
3pm					
4pm					
5pm					
6pm					
7pm					

Goal #1: Develop a visible presence within the school community, August 27 - Thursday, 2017 (Central Time)
Holidays in United States

	Sun 8/27	Mon 8/28	Tue 8/29	Wed 8/30	Thu 8/31
9am				ESU #2 Superintendent Meeting (Fremont) 8:30am - 12pm	
10am					
11am					
12pm					
1pm					
2pm					
3pm					
4pm					
5pm					
6pm					
7pm			Girls Softball vs. Fort Callhoun 6:30pm - 9pm		
8pm					

Goal #1: Develop a visible presence within the schools, the community, and the media, Fri Sep 1 - Tue Sep 5, 2017 (Central Time), Holidays in United States

	Fri 9/1	Sat 9/2	Sun 9/3	Mon 9/4	Tue 9/5
				Labor Day	
7am					
8am					
9am					
10am					
11am					
12pm					
1pm					
2pm					
3pm					
4pm					
5pm					

Goal #1: Develop a visible presence within the schools, Wed Sep 6 - Sat Sep 9, 2017 (Central Time)
, Holidays in United States

	Wed 9/6	Thu 9/7	Fri 9/8	Sat 9/9
10am				
11am				
12pm				
1pm	Labor Relations (Negations Workshop) 12:30pm - 6:30pm			
2pm				
3pm				
4pm				
5pm				
6pm				
7pm				
8pm				
9pm				

Goal #1: Develop a visible presence within the school community, Holidays in United States Sun Sep 10 - Wed Sep 13, 2017 (Central Time)

	Sun 9/10	Mon 9/11	Tue 9/12	Wed 9/13
6am				
7am				
8am				
9am				
10am				
11am				
12pm				
1pm				
2pm				
3pm				
4pm				
5pm				

18. Develop a 5 year facilities strategic plan for implementation that addresses maintenance and improvements for existing building assets.

Jr. Sr. High School Projects	Date	Cost
2017-2018 School Year		
Plant Trees in Center Island of Parking Lot	Fall 2017	1000
Foam Soap Dispensers	December	
Fence around Pump House (grant)	Fall 2017	5000
Camera to view pumphouse, gas pump, etc...	Fall 2017	3100
New storage shed to replace portable	School Year	15,000
Clean up bus barn and surrounding area	School Year	
Summer 2018		
Remove portable	5000	
Landscape preschool entrance	850	
2 Year		
Construct a stadium entrance (student project)	\$5,000	
Replace wood stadium seats with aluminum	\$15,000	
Maintain High School Entrance Road (asphalt)	\$20,000+	
Concrete replacement south of Building J		
5 Year		
New Track and Football Field Work	Summer 2022	
Roof over special education area (24 years old)	Summer 2022	
Roof over senior hall (22 years old)	Summer 2022	
Concrete stadium entrance and parking lot		

Ceresco Projects	Date	Cost
2017-2018 School Year		
Fix and repaint EIFS	Fall 2017	1700
Replace old fixtures in RR due to hard water	School Year	
Summer 2018		
Phase 1 of carept replacement (20 years old)		
Air Quality (mold removal and reduce humidity)		
2 Year		
Replace roof on south gym	Summer 2019	
Phase 2 Carpet Replacement		
5 Year		
10 Year Plan		
Make playground ADA compliant		

Valparaiso Projects	Date	Cost
2017-2018 School Year		
Security cameras for playground and front entrance		\$5,000
Replace guardrail on hill by playground / Concrete barriers		
Summer 2018		
Trench back parking lot ditch to drain away from lot		
Gravel in parking lot area to reduce mowing		
Phase 1 Carpet Replacement		
Phase 1 Painting Classrooms		
Update wall cork boards in classrooms		
EIFS painting around gym		
2 Year		
Window replacement - northside		
Phase 2 Carpet Replacement		
Update chairs in classrooms to match and correct size		
Remove old tree on west side of playground and replace		
Phase 2 Painting Classrooms		
5 Year		
Level and overseed green space		
Tile in Kitchen workspace		
Roof replacement (area TBD) - Gym roof 1996		
Create a windbreak on northside of field		
Tuckpointing around the building		
10 Year		
Make Playground ADA compliant / remove rock		

19. Develop a thorough understanding of Nebraska School Finance and the Raymond Central budgeting process.
20. Develop an understanding of existing internal and external district communications and develop strategies to improve transparency and messaging.
21. Facilities Report

Air & Fluid Management

217 S. Wilson - P.O. Box 667 - Wilber, NE 68465 - Ph. (402) 821-3266 - Fax 821-3280

GENERAL INFORMATION

PROJECT: Ceresco Elementary School

LOCATION: Ceresco, Nebraska

ARCHITECT: Ciaccio Dennell Group

MECHANICAL ENGINEER: Farris Engineering

MECHANICAL CONTRACTOR: None

GENERAL CONTRACTOR: None

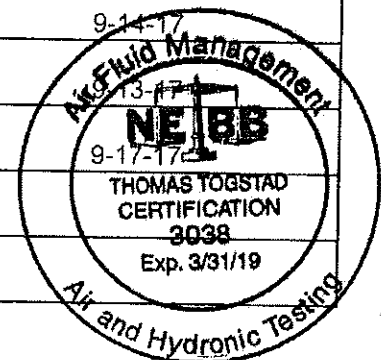
ELECTRICAL CONTRACTOR: None

CONTROL CONTRACTOR: None

BALANCING TECHNICIAN: Terry Togstad, Brian Togstad,
Anthony Warta, Jesse Brueggemann

Issues:
- HUMIDITY
- MOIST
- DAVE BAYNE
- TOMMY KAM AIR FLUID
MANAGEMENT.
DAVE BAYNE CAN HELP W/
EXISTING UNITS.

APPLICATION	INSTRUMENT SERIAL NO.	CAL. TEST DATE
C.F.M.	Shortridge Flowhood ADM 870	9-14-17
Vel.	Pacer Inst. DA420	1-11-17
Amps/Volts	Fluke Corp. 902	9-8-17
RPMS	Monarch Inst. PLT200	9-22-17
Pressure	Shortridge Flowhood ADM 870	9-14-17
Water Pressure Diff.	Shortridge Mod. 250	9-17-17
Temperature	Testo 0609	9-17-17



DIFFUSER, REGISTER, AND GRILLE MANUFACTURE: Existing

DATE: 6-1-17

PAGE 1 OF 37

HEAT PUMP TEST REPORT

PROJECT: Ceresco Elementary School

NEBB CERTIFIED

MANUFACTURE: Mammoth Inc.

FAN NO.		HP-4	HP-4	HP-4	HP-2
AREA SERVED		Area A, A12	Area A, A11	Area A, A10	Area A, A8
MODEL OR TYPE		F035HLE	F035HLE	F035HLE	D020HLG
CFM	DESIGN	1130	1130	1130	600
	ACTUAL	960	1070	1110	640
FAN SP	DESIGN	.50"	.50"	.50"	.40"
	ACTUAL	-.15"/+.25"/+.40"	-.20"/+.20"/+.40"	-.15"/+.20"/+.35"	-.15"/+.10"/+.25"
FAN RPM'S	DESIGN	DD	DD	DD	DD
	ACTUAL	DD	DD	DD	DD
BELT SIZE NO. REQUIRED	DESIGN	DD	DD	DD	DD
	ACTUAL	DD	DD	DD	DD
HP.	DESIGN	NA	NA	NA	NA
	ACTUAL	1/3	1/3	1/3	1/5
AMPS	DESIGN	2.4	2.4	2.4	1.7
	ACTUAL	2.0	2.3	2.1	1.4
VOLTS	DESIGN	208-230/1	208-230/1	208-230/1	208-230/1
	ACTUAL	208/1	208/1	208/1	208/1
MOTOR RPM'S	DESIGN	DD	DD	DD	DD
	ACTUAL	DD	DD	DD	DD
HEATERS		None	None	None	None
SERVICE FACTOR		NA	NA	NA	NA
FAN SHEAVE		DD	DD	DD	DD
MOTOR SHEAVE		DD	DD	DD	DD

REMARKS: DD-Direct Drive

HEAT PUMP TEST REPORT

PROJECT: Ceresco Elementary School

NEBB CERTIFIED

MANUFACTURE: Mammoth Inc.

FAN NO.		HP-4	HP-1	HP-4	HP-4
AREA SERVED		Area A, A9	Area A, A2-A6	Area A, A21	Area A, A20
MODEL OR TYPE		F035HLE	D014HLG	F035HLE	F035HLE
CFM	DESIGN	1130	350	1130	1130
	ACTUAL	910	450	1000	1120
FAN SP	DESIGN	.50"	.40"	.50"	.40"
	ACTUAL	-.15"/+.20"/+.35"	-.15"/+.15"/+.35"	-.20"/+.20"/+.40"	-.15"/+.15"/+.30"
FAN RPM'S	DESIGN	DD	DD	DD	DD
	ACTUAL	DD	DD	DD	DD
BELT SIZE		DD	DD	DD	DD
NO. REQUIRED		DD	DD	DD	DD
HP.	DESIGN	NA	NA	NA	NA
	ACTUAL	1/3	1/10	1/3	1/3
AMPS	DESIGN	2.4	.7	2.4	2.4
	ACTUAL	2.2	.6	2.2	2.3
VOLTS	DESIGN	208-230/1	208-230/1	208-230/1	208-230/1
	ACTUAL	208/1	208/1	208/1	208/1
MOTOR RPM'S	DESIGN	DD	DD	DD	DD
	ACTUAL	DD	DD	DD	DD
HEATERS		None	None	None	None
SERVICE FACTOR		NA	NA	NA	NA
FAN SHEAVE		DD	DD	DD	DD
MOTOR SHEAVE		DD	DD	DD	DD

REMARKS: DD-Direct Drive

HEAT PUMP TEST REPORT

PROJECT: Ceresco Elementary School

NEBB CERTIFIED

MANUFACTURE: Mammoth Inc.

FAN NO.		HP-2	HP-4	HP-5	HP-5
AREA SERVED		Area A, A15	Area A, A19	Area A, A16	Area A, A25-A27
MODEL OR TYPE		D020HLG	F035HLE	F045HLG	F045HLG
CFM	DESIGN	600	1130	1320	1320
	ACTUAL	595	1140	1315	1220
FAN SP	DESIGN	.40"	.50"	.50"	.50"
	ACTUAL	-.10"/+.10"/+.20"	-.15"/+.20"/+.35"	-.20"/+.20"/+.40"	-.20"/+.20"/+.40"
FAN RPM'S	DESIGN	DD	DD	DD	DD
	ACTUAL	DD	DD	DD	DD
BELT SIZE		DD	DD	DD	DD
NO. REQUIRED		DD	DD	DD	DD
HP.	DESIGN	NA	NA	NA	NA
	ACTUAL	1/5	1/3	1/2	1/2
AMPS	DESIGN	1.7	2.4	3.2	3.2
	ACTUAL	1.5	2.0	3.1	3.0
VOLTS	DESIGN	208-230/1	208-230/1	208-230/1	208-230/1
	ACTUAL	208/1	208/1	208/1	208/1
MOTOR RPM'S	DESIGN	DD	DD	DD	DD
	ACTUAL	DD	DD	DD	DD
HEATERS		None	None	None	None
SERVICE FACTOR		NA	NA	NA	NA
FAN SHEAVE		DD	DD	DD	DD
MOTOR SHEAVE		DD	DD	DD	DD

REMARKS: DD-Direct Drive

HEAT PUMP TEST REPORT

PROJECT: Ceresco Elementary School

NEBB CERTIFIED

MANUFACTURE: Mammoth Inc.

FAN NO.		HP-4	HP-3	HP-5	HP-4
AREA SERVED		Area A, A29, A30	Area A, A28, A29	Area A, A31	Area B, B15
MODEL OR TYPE		F035HLE	D025HLG	F045HLG	F035HLE
CFM	DESIGN	1130	875	1320	1130
	ACTUAL	1090	820	1210	985
FAN SP	DESIGN	.50"	.50"	.50"	.50"
	ACTUAL	-.15"/+.20"/+.35"	-.10"/+.10"/+.20"	-.20"/+.20"/+.40"	-.15"/+.20"/+.35"
FAN RPM'S	DESIGN	DD	DD	DD	DD
	ACTUAL	DD	DD	DD	DD
BELT SIZE		DD	DD	DD	DD
NO. REQUIRED		DD	DD	DD	DD
HP.	DESIGN	NA	NA	NA	NA
	ACTUAL	1/3	1/3	1/2	1/3
AMPS	DESIGN	2.4	2.4	3.2	2.4
	ACTUAL	2.3	2.1	3.0	2.1
VOLTS	DESIGN	208-230/1	208-230/1	208-230/1	208-230/1
	ACTUAL	208/1	208/1	208/1	208/1
MOTOR RPM'S	DESIGN	DD	DD	DD	DD
	ACTUAL	DD	DD	DD	DD
HEATERS		None	None	None	None
SERVICE FACTOR		NA	NA	NA	NA
FAN SHEAVE		DD	DD	DD	DD
MOTOR SHEAVE		DD	DD	DD	DD

REMARKS: DD-Direct Drive

HEAT PUMP TEST REPORT

PROJECT: Ceresco Elementary School

NEBB CERTIFIED

MANUFACTURE: Mammoth Inc.

FAN NO.		HP-3	HP-4	HP-2	HP-7
AREA SERVED		Area B, B8-B14	Area B, B16	Area B, B5-B6,B18	Area B, B20, B22
MODEL OR TYPE		D025HLG	F035HLE	D020HLG	G070HLE
CFM	DESIGN	875	1130	600	2450
	ACTUAL	805	1020	735	2450
FAN SP	DESIGN	.50"	.50"	.40"	.80"
	ACTUAL	-.15"/+.15"/+.30"	-.15"/+.20"/+.35"	-.10"/+.15"/+.25"	-.20"/+.40"/+.60"
FAN RPM'S	DESIGN	DD	DD	DD	NA
	ACTUAL	DD	DD	DD	755
BELT SIZE		DD	DD	DD	A47
NO. REQUIRED		DD	DD	DD	1
HP.	DESIGN	NA	NA	NA	1
	ACTUAL	1/3	1/3	1/5	2
AMPS	DESIGN	2.4	2.4	1.7	6.2 - 6.2 - 3.1
	ACTUAL	2.0	2.2	1.6	2.6 - 2.5 - 2.4
VOLTS	DESIGN	208-230/1	208-230/1	208-230/1	208-230-460/1
	ACTUAL	208/1	208/1	208/1	480/3
MOTOR RPM'S	DESIGN	DD	DD	DD	1725
	ACTUAL	DD	DD	DD	1745
HEATERS		None	None	None	None
SERVICE FACTOR		NA	NA	NA	1.15
FAN SHEAVE		DD	DD	DD	1" x 10"
MOTOR SHEAVE		DD	DD	DD	5/8" x 5 1/2"

REMARKS: DD-Direct Drive

HEAT PUMP TEST REPORT

PROJECT: Ceresco Elementary School

NEBB CERTIFIED

MANUFACTURE: Mammoth

FAN NO.		HP-7	HP-4	HP-4	HP-3
AREA SERVED		Area B, B22	Area B, B23	Area B, B23-B27	Area B, B2
MODEL OR TYPE		G070HLE	F035HLE	F035HLE	D025HLG
CFM	DESIGN	2450	1130	1130	875
	ACTUAL	2235	1110	1150	800
FAN SP	DESIGN	.80"	.50"	.50"	.50"
	ACTUAL	-.20"/+.45"/+.65"	-.20"/+.20"/+.40"	-.15"/+.20"/+.35"	-.15"/+.20"/+.35"
FAN RPM'S	DESIGN	NA	DD	DD	DD
	ACTUAL	775	DD	DD	DD
BELT SIZE		4L480	DD	DD	DD
NO. REQUIRED		1	DD	DD	DD
HP.	DESIGN	NA	NA	NA	NA
	ACTUAL	2	1/3	1/3	1/3
AMPS	DESIGN	6.2 - 6.2 - 3.1	2.4	2.4	2.4
	ACTUAL	2.9 - 2.9 - 2.8	2.1	2.2	2.0
VOLTS	DESIGN	208-230-460/3	208-230/1	208-230/1	208-230/1
	ACTUAL	480/3	208/1	208/1	208/1
MOTOR RPM'S	DESIGN	1725	DD	DD	DD
	ACTUAL	1745	DD	DD	DD
HEATERS		None	None	None	None
SERVICE FACTOR		1.15	NA	NA	NA
FAN SHEAVE		1" x 10"	DD	DD	DD
MOTOR SHEAVE		5/8" x 5 1/2"	DD	DD	DD

REMARKS: DD-Direct Drive

HEAT PUMP TEST REPORT

PROJECT: Ceresco Elementary School

NEBB CERTIFIED

MANUFACTURE: Mammoth

FAN NO.		HP-2	HP-4	HP-6	HP-6
AREA SERVED		Area B, B30-B32	Area B, B33-B38	Area B, B3	Area B, B3
MODEL OR TYPE		D020HLG	F035HLE	VVW-181-2-G	VVW-181-2-G
CFM	DESIGN	600	1130	6400	6400
	ACTUAL	650	995	7025	7015
FAN SP	DESIGN	.40"	.50"	1.0"	1.0"
	ACTUAL	-.10"/+.15"/+.25"	-.20"/+.20"/+.40"	-.10"/+.25"/+.35"	-.15"/+.20"/+.35"
FAN RPM'S	DESIGN	DD	DD	NA	NA
	ACTUAL	DD	DD	1250	1240
BELT SIZE		DD	DD	B57	B57
NO. REQUIRED		DD	DD	2	2
HP.	DESIGN	NA	NA	NA	NA
	ACTUAL	1/5	1/3	7.5	7.5
AMPS	DESIGN	1.7	2.4	9.7	9.7
	ACTUAL	1.5	2.2	8.7 - 8.6 - 8.6	8.4 - 8.3 - 8.3
VOLTS	DESIGN	208-230/1	208-230/1	460/3	460/3
	ACTUAL	208/1	208/1	484/3	484/3
MOTOR RPM'S	DESIGN	DD	DD	1760	1760
	ACTUAL	DD	DD	1780	1780
HEATERS		None	None	None	None
SERVICE FACTOR		NA	NA	1.15	1.15
FAN SHEAVE		DD	DD	1" x 8 3/4"	1" x 8 3/4"
MOTOR SHEAVE		DD	DD	1 5/8" x 6 1/4"	1 5/8" x 6 1/4"

REMARKS: DD-Direct Drive

HEAT PUMP TEST REPORT

PROJECT: Ceresco Elementary School

NEBB CERTIFIED

MANUFACTURE: Mammoth Inc.

FAN NO.		HP-4		
AREA SERVED		Middle Pump Area C, Mech. C1		
MODEL OR TYPE		F035HLE		
CFM	DESIGN	1130		
	ACTUAL	1115		
FAN SP	DESIGN	.50"		
	ACTUAL	----		
FAN RPM'S	DESIGN	DD		
	ACTUAL	DD		
BELT SIZE		DD		
NO. REQUIRED		DD		
HP.	DESIGN	NA		
	ACTUAL	1/3		
AMPS	DESIGN	2.4		
	ACTUAL	2.2		
VOLTS	DESIGN	208-230/1		
	ACTUAL	210/1		
MOTOR RPM'S	DESIGN	DD		
	ACTUAL	DD		
HEATERS		None		
SERVICE FACTOR		NA		
FAN SHEAVE		DD		
MOTOR SHEAVE		DD		

REMARKS: DD-Direct Drive

DIFFUSER AND GRILL TEST REPORT

NEBB CERTIFIED

SYSTEM: HP-4, HP-4, HP-4

AREA SERVED: Area A

LOCATION: Ceiling A14. A8

TOTAL CFM: -----

NO.	ROOM NO.	OUTLET SIZE	DESIGN CFM	TEST - 1 VEL-CFM	FINAL VEL-CFM	COMMENTS
HP-4						
1	A12	10" 0	280	250	220	
2	A12	10" 0	280	235	210	
3	A12	10" 0	280	210	220	
4	A12	10" 0	280	195	210	
4A	A13	6" 0	NA	90	100	
HP-4						
5	A11	10" 0	280	250	275	
6	A11	10" 0	280	240	270	
7	A11	10" 0	280	300	265	
8	A11	10" 0	280	335	260	
HP-4						
9	A10	10" 0	280	290	280	
10	A10	10" 0	280	225	270	
11	A10	10" 0	280	295	290	
12	A10	10" 0	280	285	270	

REMARKS:

DIFFUSER AND GRILL TEST REPORT

NEBB CERTIFIED

SYSTEM: HP-2, HP-4, HP-1, HP-4

AREA SERVED: Area A

LOCATION: Ceiling A8, A7

TOTAL CFM: -----

NO.	ROOM NO.	OUTLET SIZE	DESIGN CFM	TEST - 1 VEL-CFM	FINAL VEL-CFM	COMMENTS
HP-2						
13	A8	10" 0	300	330	330	
14	A8	10" 0	300	320	320	
HP-4						
15	A9	10" 0	280	250	230	
16	A9	10" 0	280	235	230	
17	A9	10" 0	280	225	225	
18	A9	10" 0	280	215	225	
HP-1						
19	A3	8" x 4"	100	160	130	
20	A2	6" 0	115	90	140	
21	A4	8" x 4"	100	165	135	
22	A6	8" x 4"	35	100	45	
HP-4						
23	A21	10" 0	280	240	245	
24	A21	10" 0	280	240	255	
25	A21	10" 0	280	270	245	
26	A21	10" 0	280	230	255	

REMARKS:

DIFFUSER AND GRILL TEST REPORT

NEBB CERTIFIED

SYSTEM: HP-4, HP-2, HP-4, HP-5

AREA SERVED: Area A

LOCATION: Ceiling A15

TOTAL CFM: -----

NO.	ROOM NO.	OUTLET SIZE	DESIGN CFM	TEST - 1 VEL-CFM	FINAL VEL-CFM	COMMENTS
HP-4						
27	A20	10" 0	280	315	225	
28	A20	10" 0	280	305	230	
29	A20	10" 0	280	100	225	
30	A20	10" 0	280	265	225	
HP-2						
31	A15	10" 0	300	330	300	
32	A15	10" 0	300	270	295	
HP-4						
33	A19	10" 0	280	290	295	
34	A19	10" 0	280	280	285	
35	A19	10" 0	280	310	285	
36	A19	10" 0	280	260	275	
HP-5						
37	A16	10" 0	330	310	325	
38	A16	10" 0	330	350	330	
39	A16	10" 0	330	345	330	
40	A16	10" 0	330	320	330	

REMARKS:

DIFFUSER AND GRILL TEST REPORT

NEBB CERTIFIED

SYSTEM: HP-5, HP-4, HP-3

AREA SERVED: Area A

LOCATION: Ceiling A15, A14, A8

TOTAL CFM: ----

NO.	ROOM NO.	OUTLET SIZE	DESIGN CFM	TEST - 1 VEL-CFM	FINAL VEL-CFM	COMMENTS
HP-5						
41	A27	8" 0	160	110	150	
42	A26	10" 0	300	270	280	
43	A26	10" 0	300	270	275	
44	A26	10" 0	300	275	280	
45	A25	10" 0	260	325	240	
HP-4						
46	A29	8" 0	205	220	200	
47	A29	8" 0	205	190	195	
48	A29	8" 0	205	205	200	
49	A30	6" 0	110	85	100	
50	A29	8" 0	205	215	200	
51	A29	8" 0	205	190	195	
HP-3						
52	A29	8" 0	195	190	190	
53	A28	6" 0	100	120	90	
54	A29	8" 0	195	165	180	
55	A29	8" 0	195	155	180	
56	A29	8" 0	195	200	180	

REMARKS:

DIFFUSER AND GRILL TEST REPORT

SYSTEM: HP-5, HP-4, HP-3

NEBB CERTIFIED

AREA SERVED: Area A & B

LOCATION: Ceiling A14, Mech. C1, Ceiling B8

TOTAL CFM: -----

NO.	ROOM NO.	OUTLET SIZE	DESIGN CFM	TEST - 1 VEL-CFM	FINAL VEL-CFM	COMMENTS
HP-5						
57	A31	10" 0	330	275	300	
58	A31	10" 0	330	290	300	
59	A31	10" 0	330	295	310	
60	A31	10" 0	330	360	300	
HP-4						
61	B15	10" 0	280	235	245	
62	B15	10" 0	280	245	250	
63	B15	10" 0	280	265	245	
64	B15	10" 0	280	240	245	
HP-3						
65	B12	8" 0	180	145	165	
66	B12	8" 0	180	170	165	
67	B14	8" 0	200	125	180	
68	B10	6" x 6"	50	75	50	
69	B9	12" x 6"	185	285	170	
70	B8	8" x 4"	80	210	75	
Return						
R1	B8	6" x 6"	80	85	85	

REMARKS:

DIFFUSER AND GRILL TEST REPORT

NEBB CERTIFIED

SYSTEM: HP-4, HP-2

AREA SERVED: Area B

LOCATION: Mech. C1, Ceiling B18

TOTAL CFM: -----

NO.	ROOM NO.	OUTLET SIZE	DESIGN CFM	TEST - 1 VEL-CFM	FINAL VEL-CFM	COMMENTS
HP-4						
71	B16	10" 0	280	245	255	
72	B16	10" 0	280	280	255	
73	B16	10" 0	280	245	255	
74	B16	10" 0	280	245	255	
HP-2						
75	B6	12" x 6"	185	270	225	
76	B5	8" x 4"	90	170	110	Duct not connected, duct taped around it to balance
77	B18	8" x 4"	120	105	150	<i>FOLLOW UP ON LITIGATION - ADD VOLUME DAMPERS</i>
78	B7	8" x 4"	50	120	60	
79	B21	8" x 4"	65	95	80	No volume damper, used face damper to balance.
80	B20	8" x 4"	90	185	110	Duct not connected, duct taped around it to balance
Return						
R2	B5	6" x 6"	90	80	90	
R3	B21	6" x 6"	65	85	65	
R4	B18	6" x 6"	120	110	115	

REMARKS:

DIFFUSER AND GRILL TEST REPORT

NEBB CERTIFIED

SYSTEM: HP-7, HP-4, HP-4

AREA SERVED: Area B

LOCATION: Ceiling B22, B23

TOTAL CFM: -----

NO.	ROOM NO.	OUTLET SIZE	DESIGN CFM	TEST - 1 VEL-CFM	FINAL VEL-CFM	COMMENTS
HP-7						
87	B22	12" 0	490	720	445	
88	B22	12" 0	490	755	450	
89	B22	12" 0	490	390	445	
90	B22	12" 0	490	675	445	
91	B22	12" 0	490	820	450	
HP-4						
92	B23	10" 0	280	300	300	
93	B23	10" 0	280	310	310	
94	B23	10" 0	280	225	225	
95	B23	10" 0	280	275	275	
HP-4						
96	B23	10" 0	280	275	280	
97	B23	8" 0	180	290	290	
98	B27	8" x 4"	90	70	90	
99	B24	8" x 4"	40	85	40	
100	B25	8" x 4"	90	135	90	
101	B23	10" 0	280	175	180	
102	B23	8" 0	180	180	180	

REMARKS: #101 is reduced in size in ceiling to fit under duct. Left #96 & #97 at 280 since it is outside wall and #101 will not make 280 CFM.

DIFFUSER AND GRILL TEST REPORT

NEBB CERTIFIED

SYSTEM: HP-3, HP-2, HP-4

AREA SERVED: Area B

LOCATION: Ceiling B2, B34

TOTAL CFM: -----

NO.	ROOM NO.	OUTLET SIZE	DESIGN CFM	TEST - 1 VEL-CFM	FINAL VEL-CFM	COMMENTS
HP-3						
103	B2	10" 0	290	265	270	
104	B2	10" 0	290	245	265	
105	B2	10" 0	290	275	265	
HP-2						
106	B30	8" 0	150	195	165	
107	B31	10" 0	380	420	410	
108	B32	8" x 4"	70	120	75	
HP-4						
109	B38	8" 0	200	170	155	
110	B38	8" 0	200	185	155	
111	B37	10" 0	330	270	280	
112	B35	8" x 4"	50	105	85	Damper 100% closed
113	B36	8" x 4"	50	155	85	Damper 100% closed.
114	B33	10" 0	300	170	235	

REMARKS:

DIFFUSER AND GRILL TEST REPORT

NEBB CERTIFIED

SYSTEM: HP-6, HP-6

AREA SERVED: Area C

LOCATION: Mech. C1

TOTAL CFM: -----

NO.	ROOM NO.	OUTLET SIZE	DESIGN CFM	TEST - 1 VEL-CFM	FINAL VEL-CFM	COMMENTS
HP-6 South						
115	B3	26" x 10"	800	520	520	
116	B3	26" x 10"	800	520	520	
117	B3	26" x 10"	800	520	520	
118	B3	26" x 10"	800	520	520	
119	B3	26" x 10"	800	520	520	
120	B3	26" x 10"	800	520	520	
121	B3	26" x 10"	800	520	520	
122	B3	26" x 10"	800	520	520	
HP-6 North						
123	B3	26" x 10"	800	601	601	
124	B3	26" x 10"	800	601	601	
125	B3	26" x 10"	800	601	601	
126	B3	26" x 10"	800	601	601	
127	B3	26" x 10"	800	601	601	
128	B3	26" x 10"	800	601	601	
129	B3	26" x 10"	800	601	601	
130	B3	26" x 10"	800	601	601	

REMARKS: CFM averaged from traverse total.

ROUND DUCT TRAVERSE REPORT

NEBB Certified

PROJECT: Ceresco Elem. School
 LOCATION/ZONE: Mech. C1
 ALTITUDE: -----

DENSITY: -----

SYSTEM/UNIT: HP-6 North
 SERVICE: Area C
 CORR.FACTOR: -----

DUCT	REQUIRED	ACTUAL
S.P.: +.05" Air Temp ----- F (C)		
Size: 28" 0 Area: 4.28	FPM: 1495	FPM: 1639
	SCFM: ----- CFM: 6400	SCFM: ----- CFM: 7015

											1778											
											1622											
											1519											
											1379											
											1395											
856	1095	1024	1188	1131	1129	1023	1206	1082	1497													
											1244	Vert. Subtotal: 11257										
											851	Horiz. Subtotal: 11231										
											805	Total: 22488										
											664	No. of Points: 20										
											0	Average: 1124										

	<u>P.1</u>	<u>P.2</u>	<u>P.3</u>	<u>P.4</u>	<u>P.5</u>
6	0.204	0.354	0.456		
8	0.177	0.306	0.395	0.468	
10	0.158	0.274	0.354	0.418	0.474

REMARKS:

TEST DATE: 4-13-17

READINGS BY: TT, BT

PAGE 21

(*) - DAVIS DESIGN

- SES: SPECIALIZED ENGINEER SOLUTIONS
#2 - ENGINEERING TECHNOLOGY INC.

- HAD BUILDING BALANCE
- WHAT CAN WE DO TO IMPROVE?

ENERGY RECOVERY UNIT TEST REPORT

PROJECT: Ceresco Elementary School

NEBB CERTIFIED

MANUFACTURE: Greenheck

NEBB LABOR MOTOR

FAN NO.		ERU-1 Supply	ERU-1 Exhaust		
AREA SERVED		Area A, B, C	Area A, B		
MODEL OR TYPE		ERV-522H-A-ES	ERV-522-A-ES		
CFM	DESIGN	7315	6175		
	ACTUAL	*5735	*4810		
FAN SP	DESIGN	1.0"	1.0"		
	ACTUAL	-.50"/+.60"/+1.10"	-.45"/+.65"/+1.10"		
FAN RPM'S	DESIGN	NA	NA		
	ACTUAL	1000	735		
BELT NO. REQUIRED	SIZE	AX80	A80		
		2	2		
HP.	DESIGN	7 1/2	5		
	ACTUAL	7.5	5		
AMPS	DESIGN	21.4 - 19.6 - 9.8	13.6 - 12.4 - 6.2		
	ACTUAL	9.8 - 9.8 - 9.7	5.0 - 4.8 - 4.8		
VOLTS	DESIGN	208-230-1460/3	208-230-460/3		
	ACTUAL	484/3	484/3		
MOTOR RPM'S	DESIGN	1760	1745		
	ACTUAL	1770	1755		
HEATERS		Adj. 11	Adj. 7.5		
SERVICE FACTOR		1.15	1.15		
FAN SHEAVE		1 1/2" x 10 1/4"	1 1/2" x 9 1/4"		
MOTOR SHEAVE		1 3/8" x 6 1/2"	1 1/8" x 5 5/8"		

REMARKS: Supply is at maximum amps.
Left exhaust low so building would not be in negative
*Traverse total

- BASED IN MOST SUPPLY THAN OUTSIDE AIR.
- THE BUILDING HAD NEVER BEEN BALANCED
- DAMPERS AND CURTAINS W/ INSULATION

TEST DATE: 4-18-17

READINGS BY: TT
NATIONAL ENVIRONMENTAL BALANCING BUREAU

RECTANGULAR DUCT TRAVERSE REPORT

NEBB Certified

PROJECT: Ceresco School
 LOCATION/ZONE: Mech. Rm.
 ALTITUDE: -----

DENSITY: -----

SYSTEM/UNIT: ERU-1
 SERVICE: Supply
 CORR. FACTOR: -----

DUCT	REQUIRED	ACTUAL
S.P.: +.60" Air Temp: -----F (C)		
Size: 20" x 30" Area: 4.17	FPM: NA SCFM: ----- CFM: NA	FPM: 1168 SCFM: ----- CFM: 4870

Distance From Bottom	Position	1	2	3	4	5	6	7	8	9	10	11	12	13
	1	1103	1250	1607	1621	815								
	2	803	1810	1557	924	912								
	3	478	1213	941	1543	945								
	4													
	5													
	6													
	7													
	8													
	9													
	10													
	11													
	12													
	13													
DISTANCE FROM DUCT EDGE														
VELOCITY														
SUB-TOTALS														

REMARKS:

RECTANGULAR DUCT TRAVERSE REPORT

NEBB Certified

PROJECT: Ceresco School
 LOCATION/ZONE: Mech. Rm.
 ALTITUDE: -----

DENSITY: -----

SYSTEM/UNIT: ERU-1
 SERVICE: Supply
 CORR. FACTOR: -----

DUCT	REQUIRED	ACTUAL
S.P.: +.30" Air Temp: -----F (C)		
Size: 16" x 24" Area: 2.67	FPM: NA SCFM: ----- CFM: NA	FPM: 324 SCFM: ----- CFM: 865

Distance From Bottom	Position	1	2	3	4	5	6	7	8	9	10	11	12	13
	1	343	310	259	273									
	2	370	334	320	319									
	3	387	331	373	263									
	4													
	5													
	6													
	7													
	8													
	9													
	10													
	11													
	12													
	13													
DISTANCE FROM DUCT EDGE														
VELOCITY														
SUB-TOTALS														

REMARKS:

RECTANGULAR DUCT TRAVERSE REPORT

NEBB Certified

PROJECT: Ceresco School
 LOCATION/ZONE: Mech. Rm.
 ALTITUDE: -----

DENSITY: -----

SYSTEM/UNIT: ERU-1
 SERVICE: Exhaust
 CORR. FACTOR: -----

DUCT		REQUIRED			ACTUAL	
S.P.: -.45"	Air Temp: -----F (C)			SCFM: -----		SCFM: -----
Size: 30" x 20"	Area: 4.17	FPM: NA		CFM: NA	FPM: 364	CFM: 1518

Distance From Bottom	Position	1	2	3	4	5	6	7	8	9	10	11	12	13
	1	492	440	433	381	378								
	2	475	401	265	289	270								
	3	477	332	306	326	195								
	4													
	5													
	6													
	7													
	8													
	9													
	10													
	11													
	12													
	13													
DISTANCE FROM DUCT EDGE														
VELOCITY														
SUB-TOTALS														

REMARKS:

RECTANGULAR DUCT TRAVERSE REPORT

NEBB Certified

PROJECT: Ceresco School
 LOCATION/ZONE: Mech. Rm.
 ALTITUDE: -----

DENSITY: -----

SYSTEM/UNIT: ERU-1
 SERVICE: Exhaust
 CORR. FACTOR: -----

DUCT		REQUIRED			ACTUAL	
S.P.: -.45"	Air Temp: -----F (C)			SCFM: -----		SCFM: -----
Size: 30" x 20"	Area: 4.17	FPM: NA		CFM: NA	FPM: 789	CFM: 3290

Distance From Bottom	Position	1	2	3	4	5	6	7	8	9	10	11	12	13
	1	1022	922	769	500	0								
	2	999	1174	1008	798	422								
	3	1025	1134	923	788	355								
	4													
	5													
	6													
	7													
	8													
	9													
	10													
	11													
	12													
	13													
DISTANCE FROM DUCT EDGE														
VELOCITY														
SUB-TOTALS														

REMARKS:

DUCT TRAVERSE SHEET

WHAT WE NEED

WHAT WE ARE

PROJECT: Ceresco Elementary School

SYSTEM: ERU-1

FI-#	LOCATION	SUPPLY	SIZE	AREA	No. RD	SP	REQUIRED TEST RESULTS			
							F.P.M.	C.F.M.	F.P.M.	C.F.M.
133	A21	HP-4	12" x 8"	.67	----	----	560	375	269	180
134	A21	HP-4	12" x 8"	.67	----	----	560	375	268	180
135	A19	HP-4	12" x 8"	.67	----	----	560	375	268	180
136	A15	HP-5	12" x 8"	.67	----	----	560	375	277	185
137	A16	HP-5	12" x 8"	.67	----	----	560	375	271	180
138	A14	HP-4	12" x 8"	.67	----	----	560	375	278	185
139	A14	HP-5	12" x 8"	.67	----	----	560	375	269	180
140	A9	HP-4	12" x 8"	.67	----	----	560	375	405	270
141	A11	HP-4	12" x 8"	.67	----	----	560	375	267	180
142	A8	HP-4	12" x 8"	.67	----	----	560	375	275	185
143	A29	HP-3	12" x 8"	.67	----	----	560	375	268	180
144	A14	HP-4	12" x 8"	.67	----	----	560	375	270	180
145	B30	HP-2	8" x 4"	.22	----	----	409	90	206	45
146	B31	HP-4	10" x 4"	.28	----	----	536	150	267	75
147	B2	HP-3	10" x 4"	.28	----	----	536	150	266	75
148	B23	HP-4	10" x 8"	.56	----	----	643	360	313	175
149	B23	HP-4	10" x 8"	.56	----	----	643	360	304	170
150	B22	HP-7	7" 0	.34	----	----	720	245	353	120
Cont.	Next Page									

REMARKS: #140 has no volume damper.

DUCT TRAVERSE SHEET

PROJECT: Ceresco Elementary School

SYSTEM: ERU-1

FI-#	LOCATION	SUPPLY	SIZE	AREA	No. RD	SP	REQUIRED TEST RESULTS			
							F.P.M.	C.F.M.	F.P.M.	C.F.M.
151	B22	HP-7	10" x 8"	.56	---	----	438	245	215	120
152	B18	HP-2	8" x 4"	.22	---	----	409	90	205	45
153	Mech. C1	HP-4	12" x 8"	.67	---	----	560	375	267	180
154	Mech. C1	HP-4	12" x 8"	.67	---	----	560	375	276	185
155	Mech. C1	HP-6	24"x 14"	2.33	---	----	966	2250	473	1100
156	Mech. C1	HP-3	10" x 10"	.69	---	----	560	375	261	180
157	Mech. C1	HP-6	24" x 16"	2.67	---	----	966	2250	415	1105

REMARKS:

DIFFUSER AND GRILL TEST REPORT

NEBB CERTIFIED

SYSTEM: ERU-1 Exhaust

AREA SERVED: Area A & B

LOCATION: Mech. C1

TOTAL CFM: -----

NO.	ROOM NO.	OUTLET SIZE	DESIGN CFM	TEST - 1 VEL-CFM	FINAL VEL-CFM	COMMENTS
E1	A20	12" x 24"	340	170	225	
E2	A21	12" x 24"	340	220	230	
E3	A19	12" x 24"	340	50	225	
E4	A18	6" x 6"	50	105	30	
E5	A16	12" x 24"	340	280	225	
E6	A29	12" x 24"	340	350	225	
E7	B11	6" x 6"	55	70	35	
E8	A31	12" x 24"	340	195	230	
E9	A3	12" x 6"	215	30	145	
E10	A4	12" x 6"	220	45	145	
E11	A6	6" x 6"	50	35	30	
E12	A10	12" x 24"	340	150	225	
E13	A9	12" x 24"	340	195	225	
E14	A11	12" x 24"	340	190	225	
E15	A26	12" x 24"	340	190	230	
E16	A12	12" x 24"	340	360	225	No volume damper
E17	A29	12" x 24"	340	325	225	
E18	B15	12" x 24"	340	335	225	
E19	B27	12" x 6"	150	95	100	
E20	B25	12" x 6"	150	105	100	
Cont.	Next Page					

REMARKS: Registers marked No Volume Damper were set with tape then taken off.

*Need to add -
TAPED RESULT Now*

TEST DATE: 5-25-17

READINGS BY: TT

NATIONAL ENVIRONMENTAL BALANCING BUREAU

MAKE-UP UNIT TEST REPORT

PROJECT: Ceresco Elementary School

NEBB CERTIFIED

MANUFACTURE: Greenheck

*Kitchen
N6250 LAUREL MOTOR*

FAN NO.		MU-1		
AREA SERVED		Area B, Kitchen		
MODEL OR TYPE		KSU-112H20-DBC		
CFM	DESIGN	3400		
	ACTUAL	2795		
FAN SP	DESIGN	1.093"		
	ACTUAL	NA		
FAN RPM'S	DESIGN	NA		
	ACTUAL	1000		
BELT SIZE		A44		
NO. REQUIRED		1		
HP.	DESIGN	1 1/2		
	ACTUAL	1 1/2		
AMPS	DESIGN	4.8 - 4.8 - 2.4		
	ACTUAL	4.6 - 4.6 - 4.6		
VOLTS	DESIGN	208-230-460/3		
	ACTUAL	210/3		
MOTOR RPM'S	DESIGN	1725		
	ACTUAL	1745		
HEATERS		Adj @ 5.5		
SERVICE FACTOR		1.15		
FAN SHEAVE		1" x 6"		
MOTOR SHEAVE		5/8" x 3 1/4"		

REMARKS: DD-Direct Drive
At maximum amps.

EXHAUST FAN TEST REPORT

PROJECT: Ceresco Elementary School

NEBB CERTIFIED

MANUFACTURE: Greenheck

- Low Backair Hood
 - New to show
 - Keston
 - Cuzv.

FAN NO.		EF-1	EF-2	EF-3	EF-4
AREA SERVED		Area A, A5	Area B, KH-1	Area B, KH-2	Area B, B36
MODEL OR TYPE		GB-100-4-22	CUBE-220-15-G	CUBE-100-4	SP-6-B
CFM	DESIGN	400	3775	600	85
	ACTUAL	645	3015	745	90
FAN SP	DESIGN	.25"	1.2"	.625"	.125"
	ACTUAL	NA	NA	NA	NA
FAN RPM'S	DESIGN	NA	NA	NA	DD
	ACTUAL	990	660	1290	DD
BELT SIZE		3L190	A31	3L190	DD
NO. REQUIRED		1	1	1	DD
HP.	DESIGN	1/4	1 1/2	1/4	40 W
	ACTUAL	1/3	1 1/2	1/4	NA
AMPS	DESIGN	6.4	4.8 - 4.8 - 2.4	5.0	.5
	ACTUAL	6.7	3.2 - 3.2 - 3.1	3.5	.5
VOLTS	DESIGN	115/1	208-230-460/3	115/1	120/1
	ACTUAL	120/1	210/3	120/1	120/1
MOTOR RPM'S	DESIGN	1725	1725	1725	DD
	ACTUAL	1745	1745	1745	DD
HEATERS		None	Adj @ 5	None	None
SERVICE FACTOR		1.15	1.15	1.15	NA
FAN SHEAVE		3/4" 3 5/8"	1" x 8 1/2"	3/4" x 3"	DD
MOTOR SHEAVE		1/2" x 2 1/2"	5/8" x 4 1/4"	1/2" x 2 1/2"	DD

REMARKS: DD-Direct Drive
 EF-1 does not have adjustable sheave.
 EF-2 left low to be within 10% of MU-1.
 EF-3 sheave is slowed down 100%.

EXHAUST FAN TEST REPORT

PROJECT: Ceresco Elementary School

NEBB CERTIFIED

MANUFACTURE: Greenheck

FAN NO.		EF-5	EF-6		
AREA SERVED		Area A, A32	Area B, B28		
MODEL OR TYPE		SP-224	SP-226		
CFM	DESIGN	250	250		
	ACTUAL	230	270		
FAN SP	DESIGN	.125"	.25"		
	ACTUAL	----	----		
FAN RPM'S	DESIGN	DD	DD		
	ACTUAL	DD	DD		
BELT SIZE		DD	DD		
NO. REQUIRED		DD	DD		
HP.	DESIGN	121 W	81 W		
	ACTUAL	NA	NA		
AMPS	DESIGN	NA	.72		
	ACTUAL	.7	.7		
VOLTS	DESIGN	NA	120/1		
	ACTUAL	120/1	120/1		
MOTOR RPM'S	DESIGN	DD	DD		
	ACTUAL	DD	DD		
HEATERS		None	None		
SERVICE FACTOR		NA	NA		
FAN SHEAVE		DD	DD		
MOTOR SHEAVE		DD	DD		

REMARKS: DD-Direct Drive

P U M P T E S T R E P O R T

PROJECT: Ceresco Elementary School

NEBB CERTIFIED

PUMP NUMBER	P-1		P-1A	
LOCATION	Mechanical C1		Mechanical C1	
SERVICE	Heat Pump Loop		Heat Pump Loop	
MANUFACTURER	Taco		Taco	
MODEL OR SIZE	FE2510E251F2L0		FE2510E251F2L0	
IMPELLER SIZE	NA		NA	
	DESIGN	ACTUAL	DESIGN	ACTUAL
G.P.M.	290	NA	290	NA
FULL FLOW TOTAL HEAD	108	NA	108	NA
PUMP PRESSURE SUCTION - DISCH.	NA	NA	NA	NA
SHUT OFF TOTAL HEAD	NA	NA	NA	NA
SHUT - OFF PRESS SUCTION - DISCH.	NA	NA	NA	NA
MOTOR HP	15	15	15	15
MOTOR RPM'S	1765	1785	1765	1785
VOLTAGE/PHASE	230-460/3	480/3	230-460/3	480/3
F. L. AMPS	35.4 - 17.7	16.9 - 16.9 - 16.8	35.4 - 17.7	16.9 - 16.8 - 16.8
HEATERS	-----	VFD	-----	VFD
SERVICE FACTOR	-----	1.15	-----	1.15

REMARKS: Unable to test pumps at 100%. Can not command all valves to 100%.

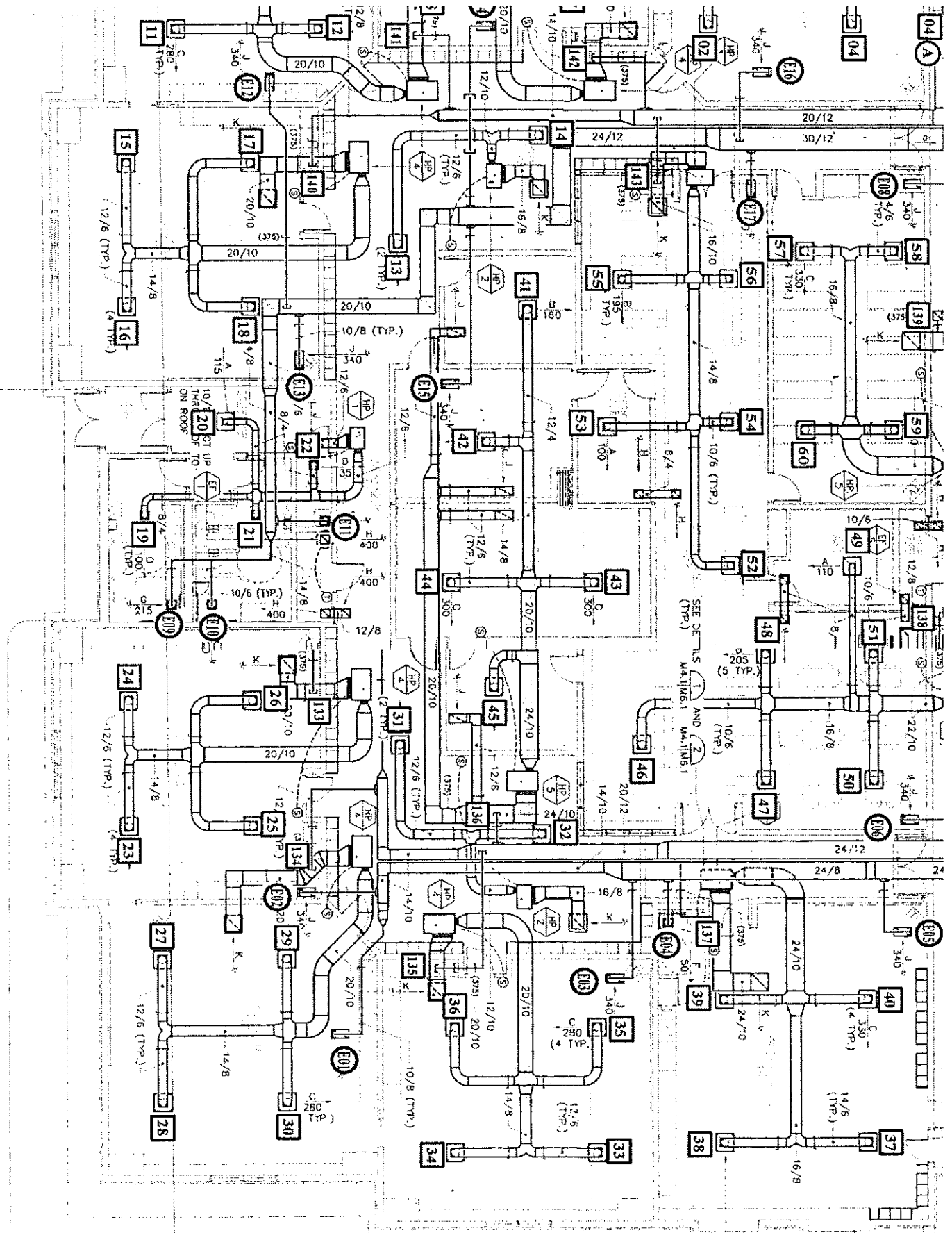
WATER BALANCE TEST REPORT

PROJECT: Ceresco Elementary School
PUMP: P-1, P-1A

MANUFACTURER: Watts
SYSTEM: Heat Pump Loop

FI NO.	LOCATION	SYSTEM	SIZE	DESIGN		BYPASS		TEST - 1		FINAL		GPM
				PD	GPM	PD	GPM	PD	SET	PD	SET	
1	A15	HP-5	1 1/4"	NA	11.0	----	----	7	----	7	----	11
2	A15	HP-2	1"	NA	5.0	----	----	6	----	6	----	5
3	A15	HP-5	1 1/4"	NA	11.0	----	----	8	----	8	----	11
4	A15	HP-4	1 1/4"	NA	10.0	----	----	7	----	7	----	10
5	A15	HP-4	1 1/4"	NA	10.0	----	----	10	----	10	----	10
6	A7	HP-4	1 1/4"	NA	10.0	----	----	7	----	7	----	10
7	A7	HP-1	3/4"	NA	3.5	----	----	7	----	7	----	3.5
8	A8	HP-4	1 1/4"	NA	10.0	----	----	9	----	9	----	10
9	A8	HP-4	1 1/4"	NA	10.0	----	----	7	----	7	----	10
10	A8	HP-2	1"	NA	5.0	----	----	10	----	10	----	5
11	A8	HP-4	1 1/4"	NA	10.0	----	----	7	----	7	----	10
12	A8	HP-3	1"	NA	7.0	----	----	9	----	9	----	5
13	A14	HP-4	1 1/4"	NA	10.0	----	----	10	----	10	----	10
14	A14	HP-4	1 1/4"	NA	10.0	----	----	12	----	12	----	10
15	A14	HP-5	1 1/4"	NA	11.0	----	----	10	----	10	----	11
16	B2	HP-2	1"	NA	5.0	----	----	10	----	10	----	5
17	B31	HP-4	1 1/4"	NA	10.0	----	----	7	----	7	----	10
18	B2	HP-3	1 1/2"	NA	7.0	----	----	10	----	10	----	5
19	B23	HP-4	1 1/4"	NA	10.0	----	----	10	----	10	----	10
20	B23	HP-4	1 1/4"	NA	10.0	----	----	7	----	7	----	10
Cont.	Next Page											

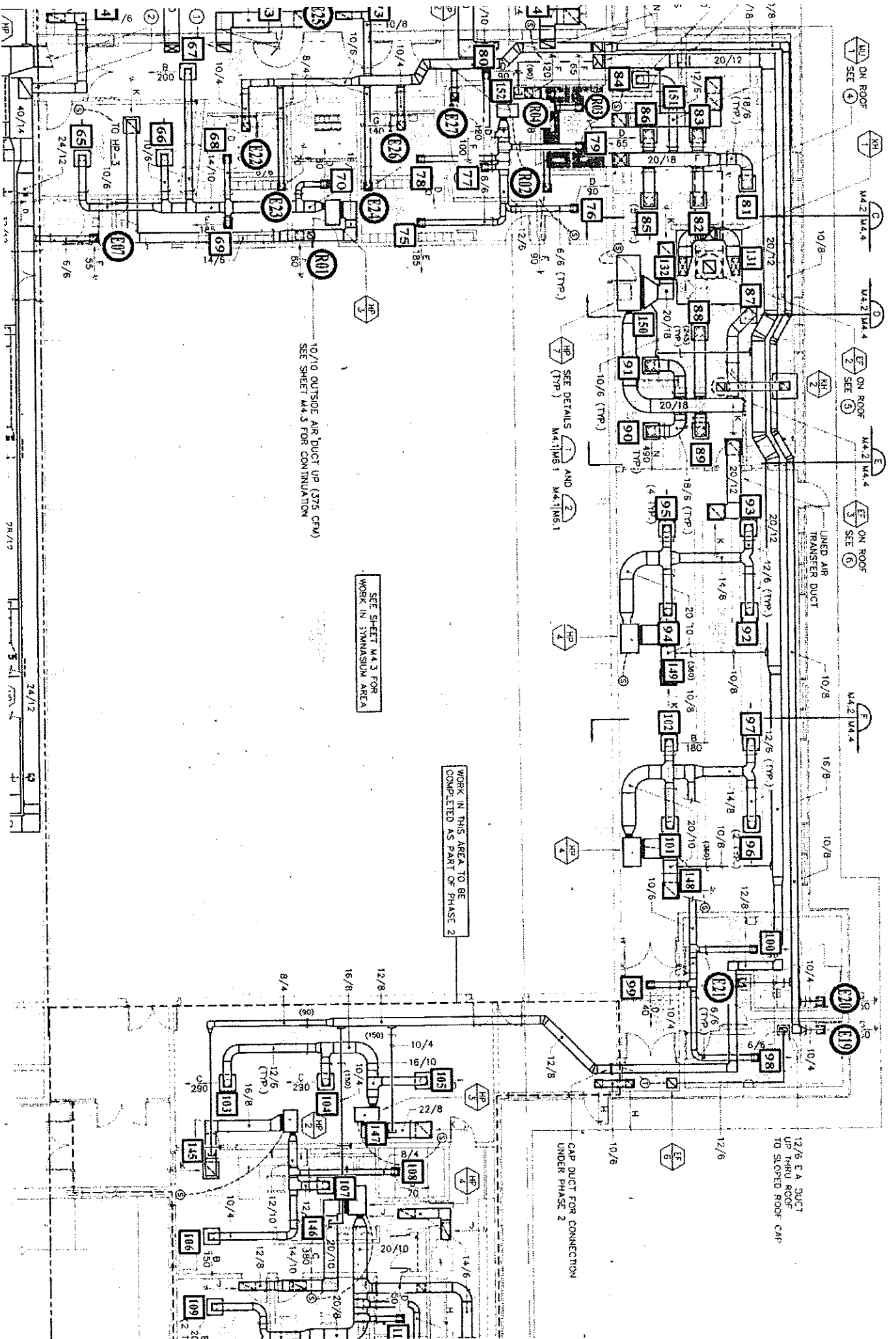
REMARKS:



SUPPLY AIR DISTRIBUTER
 SEE DETAIL M4.1106.1

Cere
 B:

HVAC Floor Plan - Area B



10/10 OUTSIDE AIR DUCT UP (375 CFM)
SEE SHEET M4.3 FOR CONTINUATION

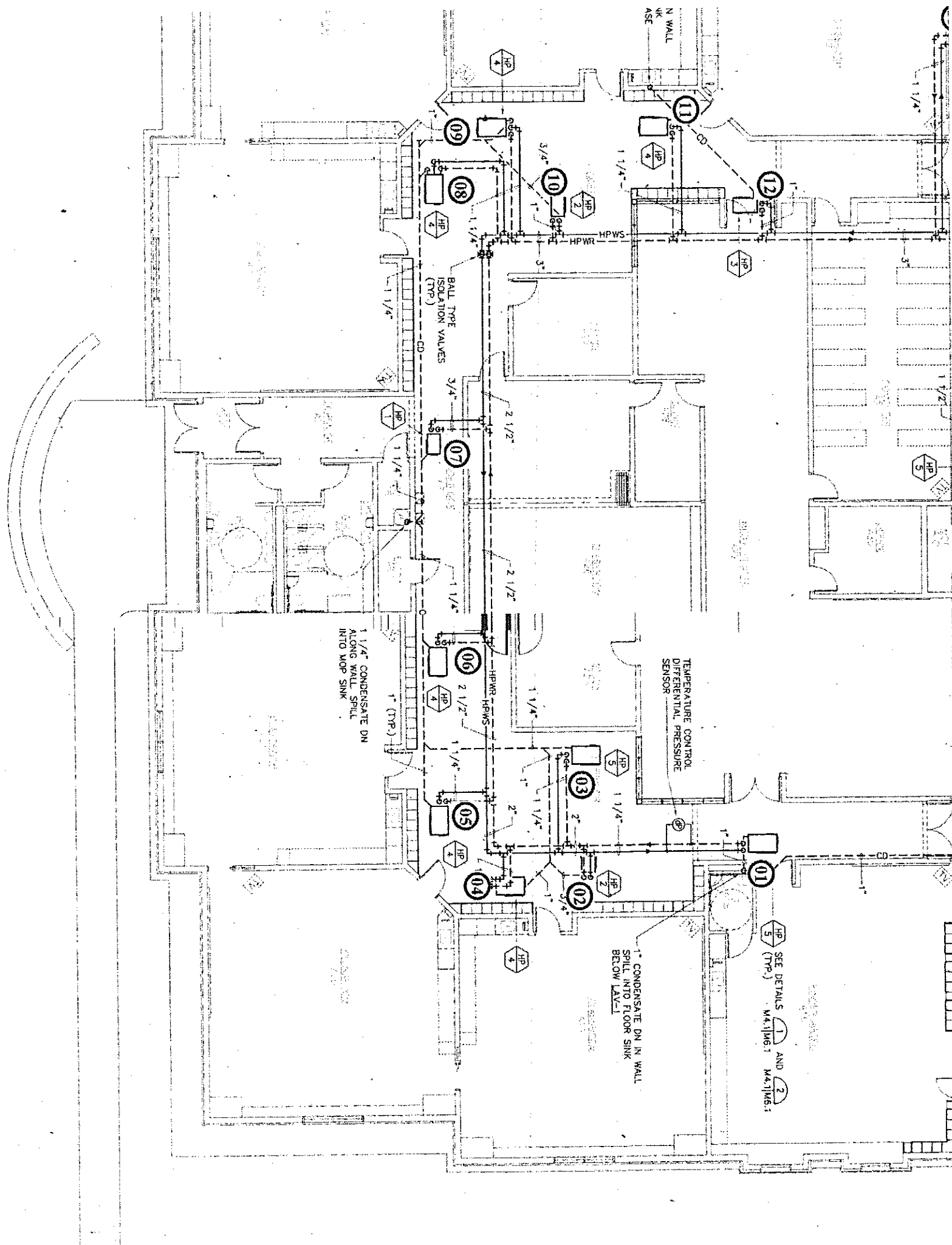
SEE SHEET M4.3 FOR
WORK IN SYMANSUM AREA

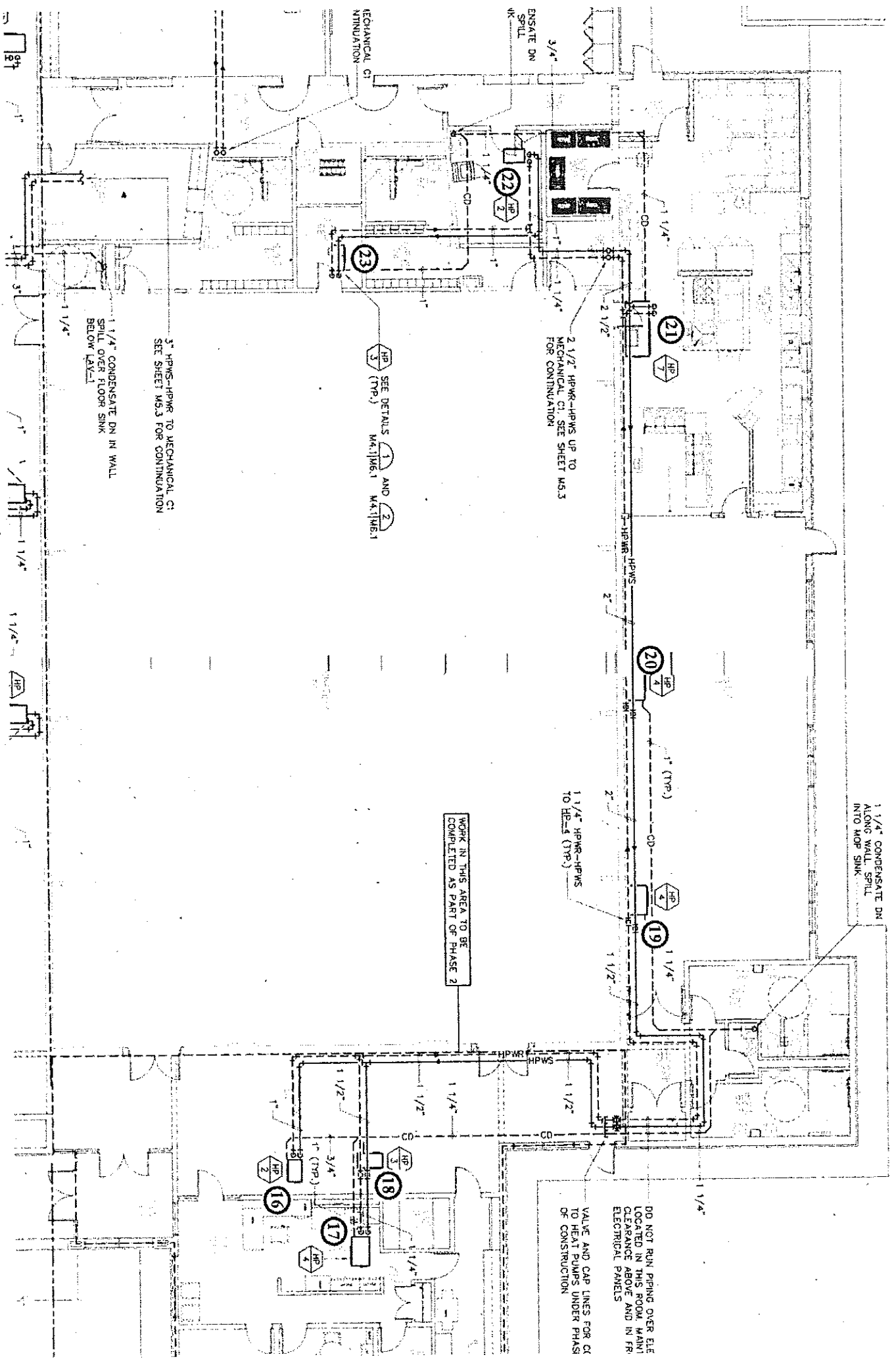
WORK IN THIS AREA TO BE
COMPLETED AS PART OF PHASE 2

CAP DUCT FOR CONNECTION
UNDER PHASE 2

12/6 E.A. DUCT
UP FROM ROOF
TO SLOPED ROOF CAP







1 1/4" CONDENSATE DN
ALONG WALL SPILL
INTO HOP SINK

2 1/2" HPWR-HPWS UP TO
MECHANICAL CI. SEE SHEET M5.3
FOR CONTINUATION

HP SEE DETAILS 1 AND 2
3 (TYP.) M4.1/M6.1 M4.1/M6.1

3" HPWS-HPWR TO MECHANICAL CI.
SEE SHEET M5.3 FOR CONTINUATION

1 1/4" CONDENSATE DN IN WALL
SPILL OVER FLOOR SINK
BELOW LEVEL

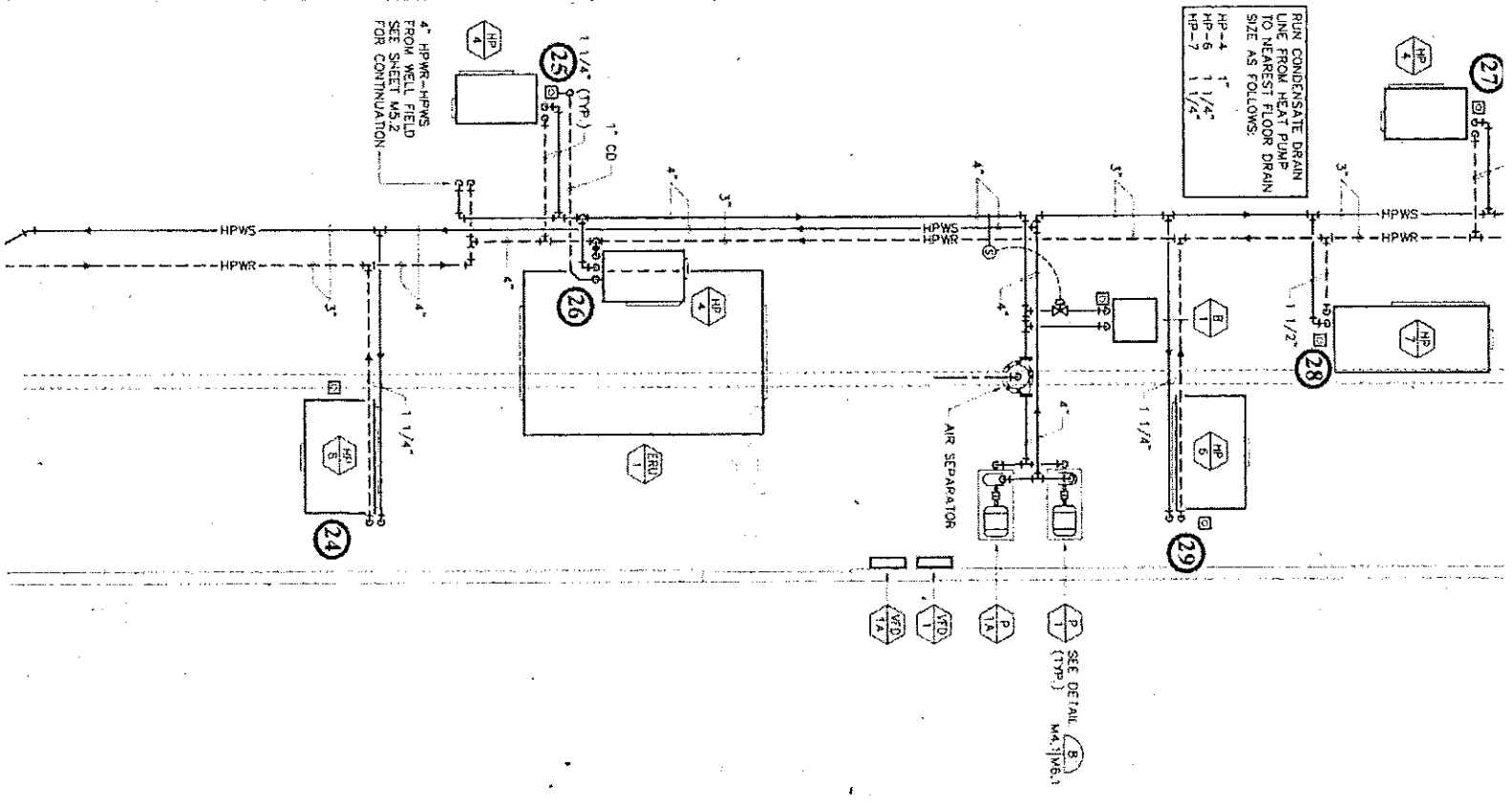
WORK IN THIS AREA TO BE
COMPLETED AS PART OF PHASE 2

DO NOT RUN PIPING OVER ELEC
LOCATED IN THIS ROOM. MAINT
CLEARANCE ABOVE AND IN FR
ELECTRICAL PANELS

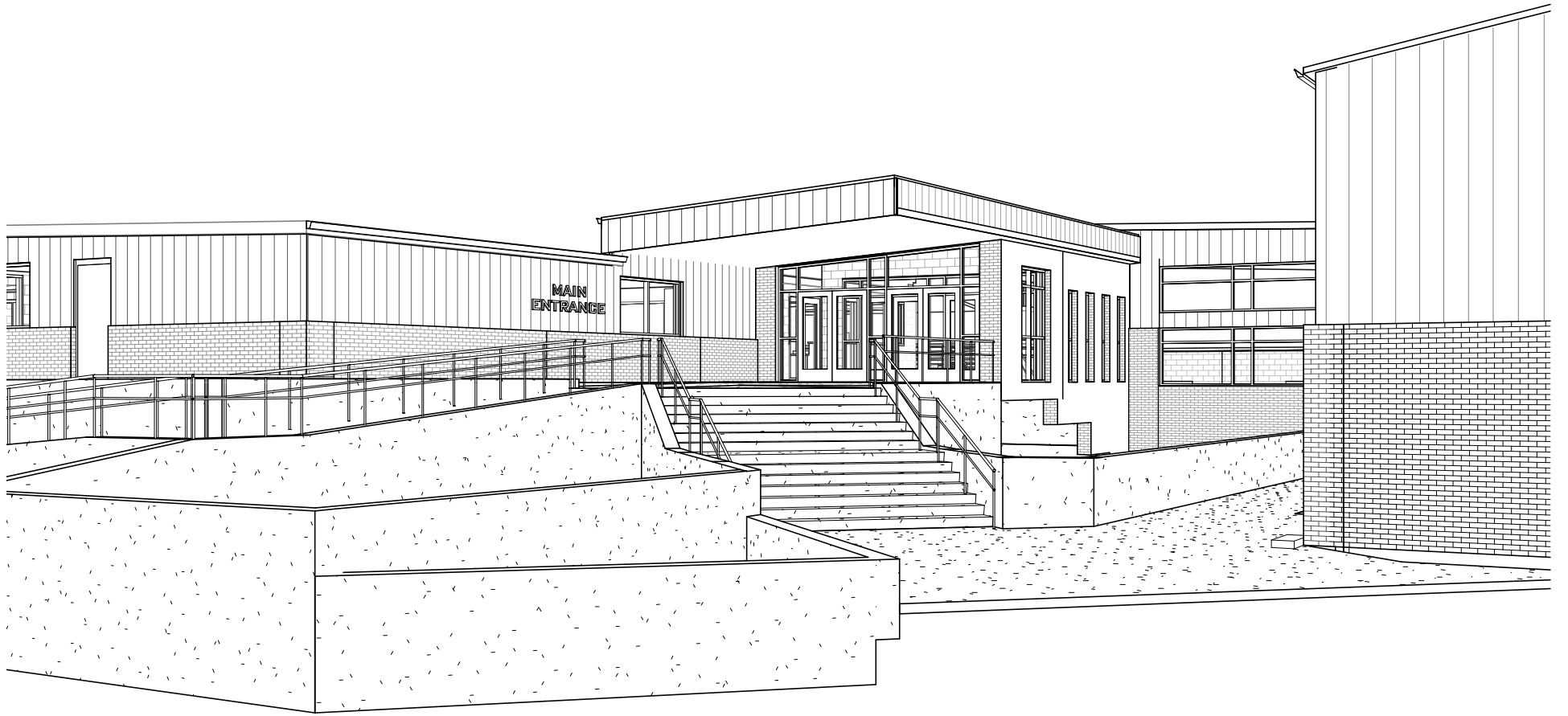
VALVE AND CAP LINES FOR C
TO HEAT PUMPS UNDER PHASE
OF CONSTRUCTION

HVAC Piping Floor Plan - Area B

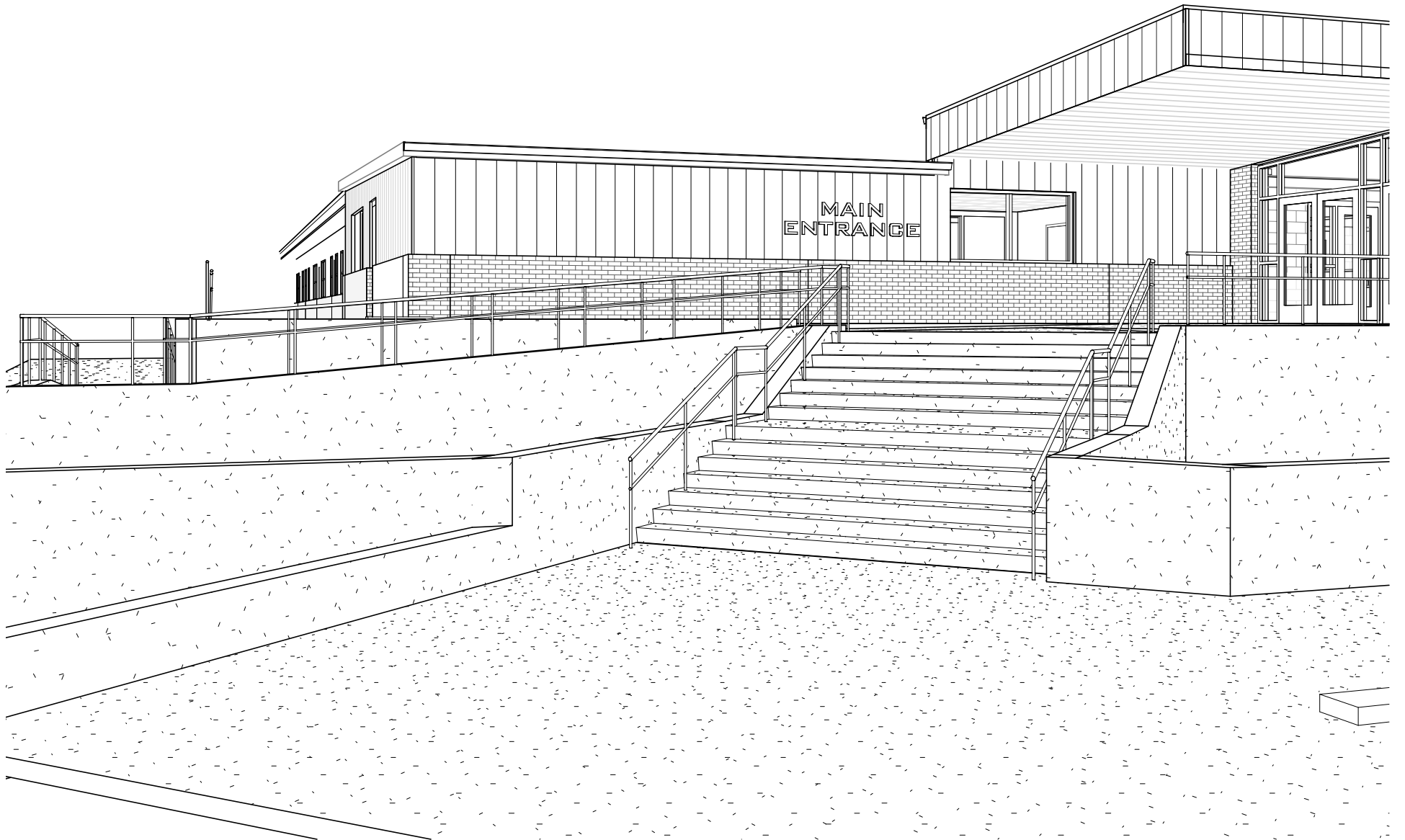
Ceresco Ele
M5.2
Balancing



Ceresco Elementary School
M5.3
Balancing Report



MAIN
ENTRANCE



22. Student Board Member Report
23. Americanism Committee Report (Breitkreutz - chair, Urbom, Springer)
24. Transportation Committee (Black - chair, Breitkreutz, Springer)
25. Finance Committee (Springer - chair, Blanchard, Breitkreutz)
26. Facilities Committee (Blanchard - chair, Urbom, Springer)
27. Negotiations Team (Black - chair, Gould, Blanchard)
28. Curriculum Committee (Gould - chair, Black, Urbom)
29. Policy Committee (Springer - chair, Gould, Black)
30. Review of Technology Plan
31. 2017-2019 Cooperative Baseball Agreement - Consider, discuss, and take all necessary action

AGREEMENT FOR COOPERATIVE SPONSORSHIP:

[Guidelines for Cooperative Sponsorships \(PDF\)](#)

Is this a **NEW** Cooperative Sponsorship or a **RENEWAL** of an existing Cooperative Sponsorship?

NEW RENEWAL

This Agreement is made between/among the School Boards of:

School District No. , Raymond Central , Nebraska and

School District No. , , Nebraska and

School District No. , , Nebraska and

School District No. , , Nebraska.

The parties agree as follows:

- 1. Joint Application.** The above-named governing boards shall jointly make an application to the Nebraska School Activities Association (NSAA) Board of Directors before (June 1 for fall activities, September 1 for winter activities or January 1 for spring activities) **2017**, for approval for cooperative sponsorship of a joint high school program.

Please check the activity or activities for which the above-named governing boards are applying for cooperative sponsorship.

FALL	<input type="checkbox"/> FB6	<input type="checkbox"/> FB8	<input type="checkbox"/> FB11	<input type="checkbox"/> VB	<input type="checkbox"/> BCC	<input type="checkbox"/> GCC	<input type="checkbox"/> GGO	<input type="checkbox"/> BTE	<input type="checkbox"/> SB	<input type="checkbox"/> UBO	<input type="checkbox"/> PP
WINTER	<input type="checkbox"/> BSW	<input type="checkbox"/> GSW	<input type="checkbox"/> WR	<input type="checkbox"/> BBB	<input type="checkbox"/> GBB	<input type="checkbox"/> SP	<input type="checkbox"/> DE				
SPRING	<input checked="" type="checkbox"/> BA	<input type="checkbox"/> BTR	<input type="checkbox"/> GTR	<input type="checkbox"/> GTE	<input type="checkbox"/> BGO	<input type="checkbox"/> BSO	<input type="checkbox"/> GSO				
OTHER	<input type="checkbox"/> VM	<input type="checkbox"/> IM	<input type="checkbox"/> JO								

hereinafter "combined program," for students attending the above-named schools for years:

2017-2018

2018-2019

2019-2020

(Check all school years to be covered.)

- 2. Purpose.** The purposes for the above-named boards agreeing to apply for authority to cooperatively sponsor the combined program are as follows: (Specify conditions which have prompted the Boards to agree.)

a.

b.

c.

d.

3. **Agreement to Cooperate.** If the joint application is approved by the NSAA Board of Directors, the above-named governing boards agree that they will cooperatively sponsor the combined program in the school years specified, provided that nothing in this provision shall be deemed to require that the governing boards offer that combined program at all in any particular year.
4. **Terms and Conditions of Cooperative Sponsorship.** Any combined program shall be cooperatively sponsored upon the following terms and conditions:

a. **Team Name, Mascot and Team Colors.** The team shall be known as (Name) , (Mascot) , with School District No. serving as host school district. The team colors are .

b. **Contracts.** Except as otherwise provided herein, contracts related to the cooperatively sponsored team with groups such as referee associations, with individuals, or with other schools or school districts, shall be made by the governing board of School District No. , after consultation with the governing board of the cooperating school district. **In the event this co-op qualifies for reimbursement for any state championships, the check should be written to the head school.**

c. **Allocation of Costs.** All costs of the combined program shall be allocated between/among the parties in the manner indicated below for each expenditure category listed:

- I. Expenses for transportation, including daily transportation of participants to and from practice sessions and contests. (Specify method of allocation.)

Daily practices will be the responsibility of the students with regards to transportation. Schools will work together for transportation to contests with either one providing bus(es) or vans. //

- II. Expenses for transportation to "away contests." (Specify method of allocation.)

Expenses for transportation will be split evenly between the schools. Schools will determine pick-up locations and logistics depending on which way students are traveling to the away contest. //

- III. Expenses for spectator buses. (Specify method of allocation.)

n/a //

- IV. Expenses for facilities, lights, heating, showers, towels, laundry, etc., of the host school, including maintenance of practice and competitive facilities. (Specify method of allocation.)

Malcolm and Raymond Central will split hosting practices and home contests. All costs will be split evenly between the schools. Malcolm and Raymond Central will be responsible for maintaining their respective home fields. //

- V. Expenses for banquets and awards. (Specify method of allocation.)

Each school will provide the necessary awards for their respective banquets if applicable. //

- VI. Expenses for scouting, coaches' meetings and workshops. (Specify method of allocation.)

Each school will split the cost of these expenses. //

- VII. Expenses for payment of referees and other personnel necessary to stage the event. (Specify method of allocation.)

Each school will split the cost of these expenses. //

- VIII. Expenses for purchasing of supplies and equipment. (Specify method of allocation.)

Each school will split the cost of these expenses. //

- IX. Expenses for salary and fringe benefit costs for coaches and other activity personnel. (Specify method of allocation.)

Each school will split the cost of these expenses. //

- X. Other expenses. (Specify method of allocation.)

Total expenses for the season will be split at the end of the year with each school paying 50%. //

In the event that the allocation of an expenditure item is not specified above, the costs of that item shall be shared EQUALLY between/among the cooperating parties.

- d. **Allocation of Gate Receipts.** Funds from gate receipts shall be divided by the parties after payment of referees and other personnel in the following manner: (Specify method of allocation.)

Gate receipts will be kept by the hosting school. We will allocate for it in our budget to help offset costs for the program together.

In the event the gate receipts are insufficient to make the payments, the parties shall make up the difference in the following manner: (Specify method of allocation.)

To make up any deficit after gate receipts are accounted for, the schools will split the remaining cost 50% each.

- e. **Concessions.** The provision of concessions at home contests shall be the responsibility of the home location school, and concession revenues shall not be covered by the provisions of this Agreement unless the parties specifically agree to the contrary herein.
- f. **Utilization of Resources.** Personnel in charge of the program shall make every attempt to utilize the resources of each of the cooperating schools, such as equipment and uniforms.

g. **Employment of Personnel.**

- I. The head coach of the combined program shall be employed by the school board of School District No. 148 and.
- II. Other joint program personnel, if any, shall be employed as follows:

POSITION	EMPLOYER
Co-head coach	Malcolm High School
Co-head coach	Raymond Central High School

- III. Recommendations for employment of personnel by each board shall be in accordance with the board's policies.
- IV. Coaches and other personnel employed by a school district shall meet applicable state requirements.

- h. **Control and Supervision of Programs and Participants.** The control and supervision of a combined program, and of the behavior of student participants in the program, shall be the responsibility of the host school district.

The control and supervision of student participants while in transport to and from the host school district shall be the responsibility of the home school district.

5. **Interdistrict Advisory Board.** An Interdistrict Advisory Board may be formed from members of the schools to work on the improvement of the various co-sponsored programs.
6. **Resolution of Disputes.** Any disputes relating to this Agreement, or items in this Agreement requiring clarification, will be investigated by the school superintendents from each school, and they will present their findings and recommendations to their respective boards.
7. **Term, Dissolution.** The term of this Agreement shall be for school years 2017 and 2018. The Agreement shall terminate at the end of the last school year specified, unless extended by mutual agreement. If the parties determine to extend the Agreement beyond the period specified, they agree to submit a "Cooperative Program Renewal Agreement" form to the NSAA Board of Directors prior to June 1 for fall activities, September 1 for winter activities and January 1 for spring activities, preceding the school year or season in which the coop program is to be implemented. If the parties determine to dissolve the Agreement at an earlier date, they agree to submit an application requesting dissolution by April 1 of the school year prior to the school year in which dissolution is requested, i.e., April 1, 2017, for dissolution for the 2017-2018 school year. If the early dissolution of the Agreement is not approved, the combined program must be offered cooperatively, or not at all, during the remaining terms of the Agreement.
8. **Liability, Insurance.** Nothing contained in this Agreement shall relieve any party to this Agreement from liability for its negligence or that of its officers, agents and employees. Each party shall carry liability insurance in the amount of \$5,000,000 for any claimant and \$5,000,000 for any number of claims arising out of a single occurrence. The policy shall name the officers, agents and employees of the other party as named insured. Each party shall provide the other party with a certificate evidencing such insurance coverage.

Status of Cooperative Sponsorship Agreement Forms required of each school:

1. Raymond Central has not yet submitted their Cooperative Sponsorship Agreement Form
2. Malcolm has not yet submitted their Cooperative Sponsorship Agreement Form

Once all of the schools have completed their individual Cooperative Sponsorship Agreement Forms, the final portion of this application will be shown below for you to complete and submit to the NSAA office.



This would be the document to approve the sponsorship, filled in with who motions/seconds and what the vote would be.

[Return to Main Application Form](#) | [Return to Coops Main Menu](#)

The main application form was successfully saved. Please complete the following form, which is required of each school in the proposed cooperative agreement.

COOPERATIVE SPONSORSHIP:

The following information is to be provided by each school before the application form can be submitted to the NSAA.

SCHOOL: Raymond Central

- Please list the number of students enrolled in your high school.

	GRADE 9		GRADE 10		GRADE 11		GRADE 12	
	Girls	Boys	Girls	Boys	Girls	Boys	Girls	Boys
Current School Year:	22	35	15	30	38	24	21	27
Anticipated Next Year:	25	27	22	35	15	30	38	24
Anticipated Two Years Hence:	16	21	25	27	22	35	15	30

Board Member introduced the following resolution and moved its adoption:

Resolution Approving Cooperative Sponsorship Agreement

WHEREAS, a proposed Agreement has been negotiated and drafted regarding the cooperative sponsorship of a joint high school Baseball program.

WHEREAS, a copy of the proposed draft is attached and incorporated by reference.

NOW, THEREFORE, BE IT RESOLVED by the School Board of School District No. 181 as follows:

1. That the attached Cooperative Sponsorship Agreement do and hereby is approved;
2. That the Chair and Clerk are hereby authorized to execute the attached Cooperative Sponsorship Agreement and to make the required application to the Board of Directors of the Nebraska School Activities Association; and
3. That this resolution shall be effective only upon the adoption of a similar resolution by the Governing Board or School Board of the cooperating school(s) or school district(s).

The motion for adoption of the foregoing resolution was duly seconded by Board Member

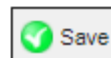
and upon vote being taken thereon, the following voted in favor thereof:

and the following voted against the same:

whereupon said resolution was declared duly passed and adopted.

Chair, Board of Education

Clerk, Board of Education



32. Security Cameras - Consider, discuss, and take all necessary action

33. Action Items

34. Approval of 2017-2018 Budget

NOTICE OF BUDGET HEARING AND BUDGET SUMMARY

** PUBLISHED **

Raymond Central Public School (55-0161) in Lancaster County County, Nebraska

PUBLIC NOTICE is hereby given, in compliance with the provisions of State Statute Sections 13-501 to 13-513, that the governing body will meet on the 13 day of September, 2017 at 7:00 o'clock, P.M., at Swing Class Room for the purpose of hearing support, opposition, criticism, suggestions or observations of taxpayers relating to the following proposed budget and to consider amendments relative thereto. The budget detail is available at the office of the Clerk/Secretary during regular business hours.

Clerk/Secretary

FUNDS	Actual Disbursements & Transfers	Actual/Estimated Disbursements & Transfers	Budgeted Disbursements & Transfers	Necessary Cash Reserve (4)	Total Available Resources Before Property Taxes (5)	Fee and Delinquent Tax Allowance (6)	Total Personal and Real Property Tax Requirement (7)
	2015-2016 (1)	2016-2017 <i>ACTUAL</i> (2)	2017-2018 <i>BUDGET</i> (3)				
General	\$ 7,598,541.00	\$ 7,927,221.00	\$ 9,523,879.00	\$ 1,800,000.00	\$ 4,312,939.00	\$ 70,817.50	\$ 7,081,757.50
Depreciation	\$ 84,730.00	\$ 725,568.00	\$ 1,330,452.00		\$ 1,330,452.00		
Employee Benefit	\$ -	\$ -	\$ 53,620.00	\$ -	\$ 53,620.00		
Contingency	\$ -	\$ -	\$ -		\$ -		
Activities	\$ 383,945.00	\$ 390,859.00	\$ 625,000.00	\$ -	\$ 625,000.00		
School Nutrition	\$ 328,613.00	\$ 308,690.00	\$ 700,000.00	\$ -	\$ 700,000.00		
Bond	\$ 4,631,235.00	\$ 1,032,797.00	\$ 1,742,759.00	\$ -	\$ 839,587.00	\$ 9,122.94	\$ 912,294.94
Special Building	\$ -	\$ 488,182.00	\$ 1,139,165.00		\$ 849,165.00	\$ 2,929.29	\$ 292,929.29
Qualified Capital Purpose Undertaking	\$ 52,025.00	\$ 51,738.00	\$ 112,490.00	\$ -	\$ 74,249.00	\$ 386.27	\$ 38,627.27
Cooperative	\$ -	\$ -	\$ -	\$ -	\$ -		
Student Fee	\$ 36,890.00	\$ 50,000.00	\$ 100,000.00	\$ -	\$ 100,000.00		
	\$ -	\$ -	\$ -	\$ -	\$ -		
TOTALS	\$ 13,115,979.00	\$ 10,975,055.00	\$ 15,327,365.00	\$ 1,800,000.00	\$ 8,885,012.00	\$ 83,256.00	\$ 8,325,609.00

Total Personal and Real Property Tax Requirement For Bonds

\$ 912,294.94

Total Personal and Real Property Tax Requirement for ALL Other

\$ 7,413,314.06

35. Approval to Set System-Wide 2017-2018 Property Tax Request for General Fund, Building Fund, High School Bond Fund, and Qualified Capital Purpose Undertaking Fund.

Notice of Special Hearing To Set Final Tax Request

Raymond Central Public School (55-0161) in Lancaster County County, Nebraska

PUBLIC NOTICE is hereby given, in compliance with the provisions of State Statute Section 77-1601.02, that the governing body will meet on the 13 day of September 2017 at 7:15 o'clock P.M., at Swing Class Room for the purpose of hearing support, opposition, criticism, suggestions or observations of taxpayers relating to setting the final tax request at a different amount than the prior year tax request.

2016/17 Budget Information

2017/18 Budget Information

Fund	2016-2017 Property Tax Request	2016 Tax Rate	Property Tax Rate (2016-2017 Request Divided By 2017 Valuation)	2017-2018 Proposed Property Tax Request	Proposed 2017 Tax Rate
General Fund	6,842,548.00	0.975458	0.933219	7,081,757.50	0.965844
Bond Fund(s) K - 12			0.000000		0.000000
Bond Fund(s) K - 8	813,443.90	0.024422	0.110941		0.000000
Bond Fund(s) 9 - 12	171,045.52	0.115552	0.023328	912,294.94	0.124423
Bond Fund _____			0.000000		0.000000
Special Building Fund	212,100.00	0.030236	0.028927	292,929.29	0.039951
Qualified Capital Purpose Undertaking Fund K - 12	36,953.88	0.005268	0.005040	38,627.27	0.005268
Qualified Capital Purpose Undertaking Fund K - 8			0.000000		0.000000
Qualified Capital Purpose Undertaking Fund 9 - 12			0.000000		0.000000

36. Approval of RCEA as Exclusive Bargaining Agent for Non-Supervisory Certified Staff

August 25, 2017

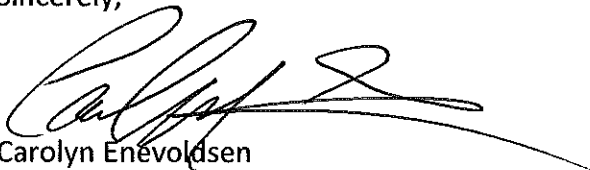
Raymond Central Public School
Board of Education
1800 W. Agnew Road
Raymond, NE 68428

Dear Negotiations Committee:

The Raymond Central Education Association requests that the school board of the Raymond Central Public Schools take action to recognize the Raymond Central Education Association as exclusive bargaining agent for the district's non-supervisory certificated staff for the 2019-2020 contract year.

Please direct your response to the undersigned.

Sincerely,

A handwritten signature in black ink, appearing to read 'Carolyn Enevoldsen', with a long horizontal flourish extending to the right.

Carolyn Enevoldsen
Raymond Central Education Association

37. Approval of Snow Removal Agreement for Ceresco Elementary



Raymond Central Public Schools

Agnew • Ceresco • Davey • Raymond • Valparaiso

Snow Removal Agreement
Ceresco Elementary School
Raymond Central Public Schools
Winter of 2017-18

Raymond Central Public Schools agrees to contract with Craig Rech for snow removal at the Raymond Central Elementary School in Ceresco, NE, for the winter of 2017-18. The District agrees to pay Craig Rech One Hundred Seventy-Five Dollars (\$175.00) per occurrence for snow removal.

Mr. Rech will furnish his own equipment and agrees to remove snow from the following areas:

- 1) The east parking lot – move snow to southeast grass area.
- 2) The snow from asphalted play area.
- 3) The south sidewalk along the entire school property, this sidewalk runs along the south boundary and then south to private property.
- 4) The parking area along the Ceresco/Valparaiso Road.
- 5) The loading area at the northwest edge of school.

Craig Rech will communicate with Phil Carlson, Operations Manager, and/or David Christensen, Ceresco Custodian, when snow removal is requested. The snow will need to be removed before 8:00 AM on regular school days. If there is a late start, a later time can be arranged with Phil Carlson. When school is cancelled due to excessive snow, an initial snow removal will be required. If a second removal of snow is needed, it must be approved by Phil Carlson before any additional snow removal takes place.

Signature of Contractor

Date

Signature of School Official

Date

Craig Rech Snow Removal

3350 Rock Creek Road
Davey, Ne. 68336
(402)-432-6990
craigrech78@yahoo.com
08/28/2017

BID ONLY

Bill To:
Raymond Central Public Schools
Attn: Cheryl
RR
Raymond, Ne. 68428
Fax#402-785-2097

Description:

Estimate for the 2017-2018 Ceresco \$175.00

Remove Snow from parking lot, food truck drive, basketball area, and snow blow sidewalks

*Note-Additional charge if larger equipment is needed. This has been done in the past. This is for the cooks drive and the back door south side!

THIS IS A BID ONLY

TOTAL DUE: \$0.00

PLEASE MAKE CHECKS PAYABLE TO: CRAIG RECH

Snow Removal Agreement
Ceresco Elementary School
Raymond Central Public Schools
Winter of 2016-2017

Raymond Central Public Schools agrees to contract with Craig Rech for snow removal at the Ceresco Elementary School in Ceresco, Nebraska for the winter of 2016-17. The District agrees to pay Craig Rech one hundred seventy-five dollars (\$175.00) per occurrence for snow removal.


Mr. Rech will furnish his own equipment and agrees to remove snow from the following areas:

- 1) The east parking lot – move snow to southeast grass area
- 2) The snow from asphalted play area
- 3) The south sidewalk along the entire school property, this sidewalk runs along the south boundary and then south to private property.
- 4) The parking area along the Ceresco/Valparaiso Road
- 5) The loading area at the northwest edge of the school

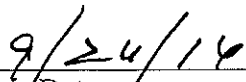
Craig Rech will communicate with Phil Carlson - Head Maintenance Person and/or David Christensen, Ceresco custodian, when snow removal is requested. The snow will need to be removed before 8:00 A.M. on regular school days. If there is a late start, a later time can be arranged with Phil Carlson. When school is cancelled due to excessive snow an initial snow removal will be required. If a second removal of snow is possibly needed, this second snow removal must be approved by Phil Carlson before any additional snow removal takes place.



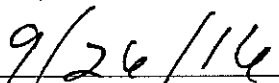
Signature of Contractor



Signature of School Official



Date



Date

38. Approve Substitute Teachers

39. Approval of Next Regular Board of Education Meeting Wednesday, October 11th, 2017
at 7:00 PM

40. Adjournment