



# North East Independent School District

8961 Tesoro Drive, San Antonio, Texas 78217

## NOTICE OF MEETING OF THE BOARD OF TRUSTEES

Notice is hereby given that a meeting of the Board of Trustees of the North East Independent School District will be held on March 23, 2026 at 5:30 PM, in the Boardroom on the first floor of the Richard A. Middleton Education Center, 8961 Tesoro Drive, San Antonio, Texas. Such meeting is a special meeting.

The open session portion of the meeting is livestreamed, and members of the public may view the meeting by going to the North East Independent School District's YouTube channel. Click the link below, or type it into your browser.

<https://www.youtube.com/c/NEISDtv>

- I. ESTABLISHMENT OF QUORUM AND CALL TO ORDER
  - II. EXECUTIVE SESSION
    - A. Personnel, including but not limited to Administrative Appointments pursuant to Government Code Section 551.074
      - 1. Routine Personnel including but not limited to Administrative Appointments
        - a. Principal of Steubing Ranch Elementary School
        - b. Athletic Coordinator/Head Football Coach of Madison High School
    - B. Purchase, Exchange, Lease, or Value of Real Property pursuant to Government Code Section 551.072
  - III. RECONVENE INTO OPEN SESSION
  - IV. MATTERS FROM EXECUTIVE SESSION
    - A. Personnel, including but not limited to Administrative Appointments pursuant to Government Code Section 551.074
      - 1. Possible Action Regarding Routine Personnel, including but not limited to Administrative Appointments 3
        - Presenter:** Rudy Jimenez, Chief of Schools and Leadership
        - a. Principal of Steubing Ranch Elementary School
        - b. Athletic Coordinator/Head Football Coach of Madison High School
- V. NEW BUSINESS FOR POSSIBLE BOARD ACTION
  - A. Operations
    - 1. Possible Action Regarding Consideration and Approval of Design Build Firms for the 2025 Bond Capital Improvement Program and District's Maintenance and Operations (RFQ 09-26) 4
      - Presenter:** Deb Caldwell, Chief Operations Officer
    - 2. Possible Action Regarding Consideration and Approval of HVAC Chiller Suppliers for the 2025 Bond Program 10
      - Presenter:** Deb Caldwell, Chief Operations Officer

3. Possible Action Regarding Right of Way Agreements with Outer Loop Utility at Reagan High School and Hill Middle School	14
<b>Presenter:</b> Deb Caldwell, Chief Operations Officer	
B. Consent	
1. 2026 Construction Prevailing Wage Rates Approval for North East ISD Construction Program	30
VI. ADJOURNMENT	

---

*If, during the course of the meeting, discussion of any item on the agenda should be held in an Executive or Closed Session, the Board will convene in such Executive or Closed Session in accordance with the Open Meetings Act, Texas Government Code, Section 551.071, 551.072, and 551.074.*

### **CERTIFICATE AS TO POSTING OR GIVING OF NOTICE**

On this 17th day of March, no later than 5:30 PM, this notice was posted on a bulletin board located at a place readily accessible and convenient to the public at the Richard A. Middleton Education Center, 8961 Tesoro Drive, San Antonio, Texas.

---

The North East Independent School District does not discriminate on the basis of race, color, religion, gender, national origin, age, or disability



## NORTH EAST INDEPENDENT SCHOOL DISTRICT

Date: March 23, 2026

Presenter: Rudy Jimenez  
Chyla Whitton, Executive  
Director for Human  
Resources

Subject: Employment of Personnel  
New Hires

Related Page(s): None

### **ACTION ITEM**

#### **BACKGROUND INFORMATION**

Policy DC (LOCAL) states: "The Superintendent has sole authority to make recommendations to the Board regarding the selection of contractual personnel in the following categories: central office administrator from the director level and above and campus administrator, including principals and assistant principals." Final authority for employment of contractual personnel in these categories shall be retained by the Board.

#### **ADMINISTRATIVE CONSIDERATION**

Campus personnel are recommended for employment by campus principals in accordance with TEC § 11.202(b). All other personnel are recommended by appropriate supervisors. In both cases, the candidate deemed "best qualified" has been selected.

#### **BUDGETARY CONSIDERATION**

New hires associated with replacement of personnel have been budgeted prior to the hiring process. New hires associated with recently established positions are covered by a contingency fund established by the Board for this purpose. Should the cost of such positions exceed the funds so budgeted, then a separate budget amendment is brought before the Board prior to additional positions being filled.

#### **ADMINISTRATIVE RECOMMENDATION**

It is recommended that the Board of Trustees of the North East Independent School District approve the hiring of new personnel as presented.

#### **BOARD ACTION REQUIRED**

Approval/Disapproval



## NORTH EAST INDEPENDENT SCHOOL DISTRICT

Date: March 23, 2026

Presenter: Deb Caldwell  
Jorge Cabello, Executive  
Director, Construction  
Management & Engineering

Subject: Consideration and Approval of  
Design-Build Firms for 2025  
Bond Capital Improvement  
Program and District's  
Maintenance & Operations  
(RFQ 09-26)

Related Page(s): Attachments

### ACTION ITEM

#### **BACKGROUND INFORMATION**

On November 17, 2025, the North East ISD Board of Trustees approved a Request for Qualifications # 09-26 for Design-Build (DB) Firms in support of the 2025 Bond and Maintenance & Operations Programs. The RFQ was open from November 18, 2025, until January 8, 2026. Statement of Qualifications (SOQs) were received from 68 DB Firms across multiple trades --General Contracting, Civil, Electrical, Mechanical HVAC, Plumbing, etc.

The District's RFQ Evaluation Committee, comprised of community members and staff, used a two-step process to evaluate firms – 1. Independent evaluation of the SOQs to award up to 60 points and 2. Interview evaluation to award up to 40 points (if deemed necessary). As a result and pursuant to the RFQ guidelines, 5 General Construction DB Firms plus 1 Alternate, 3 Civil DB Firms plus 1 Alternate, 4 Electrical DB Firms plus 1 Alternate, 5 Mechanical (HVAC) DB Firms plus 1 Alternate, 4 Plumbing DB Firms plus 1 Alternate, 3 Direct Digital Controls DB Firms are recommended to the Board of Trustees for Design Build Projects needed for various projects under the 2025 Bond Capital Improvement Program and District's Maintenance & Operations Program.

#### **ADMINISTRATIVE CONSIDERATION**

Board Policy CV requires that contracts that exceed \$100,000 in total cost be appointed by the Board of Trustees.

#### **BUDGETARY CONSIDERATION**

Funds for award of construction contracts will be provided by the 2025 Bond program or the General Fund Balance, depending on project purpose.

#### **ADMINISTRATIVE RECOMMENDATION**

The District recommends that the Board of Trustees approve the list of recommended DB Firms for General Construction Projects in support of the 2025 Bond and Maintenance & Operations Programs.

#### **BOARD ACTION REQUIRED**

Approval/Disapproval

4

4





**North East Independent School District  
Authorized Pool of Design Build Firms  
Bond 2025**



**General Construction**

F. A. Nunnely Company dba Nunnely General Contractor

Joeris General Contractors, LLC

Marksmen General Contractors, LLC

Satterfield & Pontikes Construction, Inc.

Skanska USA Building, Inc.

Waterman Construction, LLC - Alternate

**Civil Engineering Projects - Site & Infrastructure Division 31, 32, & 33 - Earthwork, Exterior Improvements, & Utilities**

Marksmen General Contractors, LLC

Skanska USA Building, Inc.

Waterman Construction, LLC

F. A. Nunnely Company dba Nunnely General Contractor - Alternate

**Electrical Systems Related Projects - Facility Services Division 26 - Electrical**

AiRCO Mechanical

Central Electric Ent. & Co., Inc.

Noble Texas Builders

Waterman Construction, LLC

LED Electric & Lighting Contractors - Alternate

**Mechanical (HVAC) Systems Related Projects - Facility Services Division 23 - Heating, Ventilating, & Air Conditioning (HVAC)**

Comfort Air Engineering, Inc.

F.A. Nunnely Company dba Nunnely General Contractor

Skanska USA Building, Inc.

Texas Chiller Systems

Yates Company, LLC

Marksmen General Contractors, LLC - Alternate

**Plumbing Systems Related Projects - Facility Services Division 22 - Plumbing**

Marksmen General Contractors, LLC

Satterfield & Pontikes Construction, Inc.

Skanska USA Building, Inc.

Waterman Construction, LLC

Comfort Air Engineering, Inc. - Alternate

**Direct Digital Control DDC Related Projects - Facility Services Division 25 - Integrated Automation**

Automated Logic Contracting Services, Inc.

Texas Chiller Systems

Yates Company, LLC



Design-Build Firms

RFQ # 09-26

2025 Bond Program



# Evaluation Score Sheet

Design/Build Firms	Step 1 - Qualifications Evaluation (60 Points Maximum)		Step 1A - Interview Evaluation (40 Points Maximum)		Average Overall Score	Final Overall Ranking
	Average Score	1st Round Ranking	Average Score	2nd Round Ranking		
<b>Architectural / General Construction</b>						
1 CGC General Contractors	49.79	8				
2 CMC Development & Construction Corpotation, LLC						
3 D. L. Bandy Constructors, Inc.	50.57	7				
4 Dodson House Moving, LLC	23.14	12				
5 F. A. Nunnely Company dba Nunnely General Contractor	51.86	5				
6 Joeris General Contractors, LLC	56.21	1				
7 Marksmen General Contractors, LLC	54.57	2				
8 Noble Texas Builders	47.64	9				
9 Satterfield & Pontikes Construction, Inc.	53.86	4				
10 Skanska USA Building, Inc.	54.14	3				
11 Triun, LLC	41.00	11				
12 Unify Energy Solutions	46.79	10				
13 Waterman Construction, LLC	51.79	6				
<b>Civil</b>						
1 CEI Engineering Associates, Inc.						
2 F. A. Nunnely Company dba Nunnely General Contractor	51.43	4				
3 Marksmen General Contractors, LLC	54.00	1				
4 Noble Texas Builders	45.86	5				
5 Skanska USA Building, Inc.	53.57	2				
6 Triun, LLC	41.00	6				
7 Waterman Construction, LLC	51.86	3				
<b>Electrical</b>						
1 AIRCO Mechanical	49.39	7	37.57	2	86.96	2
2 Central Electric Ent. & Co., Inc.	52.79	4	38.79	1	91.57	1
3 Comfort Air Engineering, Inc.	47.79	8				
4 Dalki Energy Solutions, LLC (US)	37.14	11				
5 F. A. Nunnely Company dba Nunnely General Contractor	51.21	5				
6 JSJ Rodriguez, Inc. dba Tele-Pro Communications	35.14	13				
7 LED Electric & Lighting Contractors	46.71	9	35.00	4	81.71	5
8 Marksmen General Contractors, LLC	54.71	1				
9 Noble Texas Builders	46.50	10	37.14	3	83.64	4
10 Safeguard Fire	35.79	12				
11 Skanska USA Building, Inc.	53.29	2				
12 Waterman Construction, LLC	53.00	3	32.71	5	85.71	3
13 Yates Company, LLC	50.14	6				

Design/Build Firms	Step 1 - Qualifications Evaluation (60 Points Maximum)		Step 1A - Interview Evaluation (40 Points Maximum)		Average Overall Score	Final Overall Ranking
	Average Score	1st Round Ranking	Average Score	2nd Round Ranking		
<b>Mechanical (HVAC)</b>						
1 AIRCO Mechanical	49.96	8				
2 Automated Logic Contracting Services, Inc.	49.07	10				
3 Comfort Air Engineering, Inc.	52.64	5	35.71	1	88.36	1
4 F. A. Nunnely Company dba Nunnely General Contractor	51.64	6	34.21	4	85.86	4
5 Flo-Aire Service / McDuff Enterprises	49.36	9				
6 JSJ Rodriguez, Inc. dba Tele-Pro Communications	27.00	15				
7 Marksmen General Contractors, LLC	55.07	1	31.00	6	84.86	6
8 Noble Texas Builders	44.57	12				
9 Optimus Air / Rodriquez Controls	29.50	14				
10 REC Industries, Inc.	42.07	13				
11 Skanska USA Building, Inc.	53.71	2	34.00	5	87.71	3
12 Texas Chiller Systems	50.64	7	34.43	3	85.07	5
13 Unify Energy Solutions	46.64	11				
14 Waterman Construction, LLC	53.14	3				
15 Yates Company, LLC	53.14	3	34.79	2	87.93	2
<b>Plumbing</b>						
1 AIRCO Mechanical	46.68	9				
2 Comfort Air Engineering, Inc.	52.00	5				
3 F. A. Nunnely Company dba Nunnely General Contractor	51.93	6				
4 Marksmen General Contractors, LLC	55.00	1				
5 Noble Texas Builders	45.71	11				
6 REC Industries, Inc.	46.21	10				
7 Satterfield & Pontikes Construction, Inc.	53.21	3				
8 Skanska USA Building, Inc.	54.36	2				
9 Texas Chiller Systems	49.00	8				
10 Waterman Construction, LLC	52.57	4				
11 Yates Company, LLC	51.64	7				
<b>Direct Digital Controls DDC</b>						
1 Automated Logic Contracting Services, Inc.	52.07	2				
2 Texas Chiller Systems	49.79	3				
3 Unify Energy Solutions	47.93	4				
4 Yates Company, LLC	52.86	1				
5 Optimus Air / Rodriquez Controls						
<div style="display: flex; justify-content: space-between;"> <span>2951.82</span> <span>385.00</span> <span>385.36</span> <span>36.00</span> </div>						







## NORTH EAST INDEPENDENT SCHOOL DISTRICT

Date: March 23, 2026

Presenter: Deb Caldwell  
Barry Lanford, Executive  
Director, Facility  
Maintenance and  
Operations

Subject: Consideration and Approval of  
HVAC Chiller Suppliers for the  
2025 Bond Program

Related Page(s): Attachments

### ACTION ITEM

#### **BACKGROUND INFORMATION**

On November 4, 2025, North East ISD voters approved the 2025 Bond Program totaling \$482,990,000 to address districtwide priorities including safety and security, technology, facility infrastructure, and athletic improvements. The bond includes replacement of R22 chillers and end-of-life chillers. Chillers have a long-lead time and scheduling installation often occurs during a limited period of time when campuses are not operational.

The District's HVAC Evaluation Committee, comprised of six staff members from the Facility Maintenance Department, used a multi-step process to evaluate HVAC chiller products -- 1. Independent evaluation of the products to award up to 50 points; 2. In-person product demonstrations; and 3. Site visits to area schools and businesses to inspect and observe chillers and talk with personnel regarding performance, maintenance, costs, etc. A total of four systems were part of the evaluation process. At the conclusion of the evaluation, two HVAC chiller brands are recommended to the Board of Trustees for project assignments of the 2025 Bond Program.

#### **ADMINISTRATIVE CONSIDERATION**

In pursuit of best value and timeliness, District staff recommends purchasing chillers directly from manufacturers rather than obtaining equipment through Design Build firms. Board Policy CV requires that purchases which exceed \$100,000 in total cost be approved by the Board of Trustees.

#### **BUDGETARY CONSIDERATION**

Funds for awarding of HVAC chiller purchases will be provided by the 2025 Bond program.

#### **ADMINISTRATIVE RECOMMENDATION**

The District recommends that the Board of Trustees approve the list of HVAC chiller suppliers in support of the 2025 Bond Program.

#### **BOARD ACTION REQUIRED**

Approval/Disapproval



## Chiller Vendor Rubric

				Score 1-5																							
				E1	E2	E3	E4	E5	E6	E1	E2	E3	E4	E5	E6	E1	E2	E3	E4	E5	E6	E1	E2	E3	E4	E5	E6
Criteria		Weight		TRANE						Daikin						Dunham Bush						Carrier					
		Percent	Multiplier																								
Equipment Quality-Performance		25%	(x2.5)	11	12.5	12.5	12.5	12.5	12.5	11	10	10	10	10	10	0	2.5	2.5	2.5	2.5	2.5	8	7.5	7.5	7.5	7.5	7.5
Service and Support		25%	(x2.5)	11	12.5	12.5	12.5	12.5	12.5	13	12.5	12.5	12.5	12.5	12.5	0	2.5	2.5	2.5	2.5	2.5	2	2.5	2.5	2.5	2.5	2.5
Longevity of Rep. to Equip.		15%	(x1.5)	12	7.5	7.5	7.5	7.5	7.5	10	7.5	7.5	7.5	7.5	7.5	0	1.5	1.5	1.5	1.5	1.5	10	1.5	1.5	1.5	1.5	1.5
Equipment Price		10%	(x1)	3	3	3	3	3	3	3	3	3	3	3	3	3	3	3	3	3	3	4	5	5	5	5	5
5 Year PM/ Warranty		5%	(x.5)	3	2.5	2.5	2.5	2.5	2.5	3	2.5	2.5	2.5	2.5	2.5	3	2.5	2.5	2.5	2.5	2.5	3	2.5	2.5	2.5	2.5	2.5
Lead Time	Scroll	5%	(x.5)	2	2	2	2	2	2	3	2.5	2.5	2.5	2.5	2.5	1	1.5	1.5	1.5	1.5	1.5	1	1.5	1.5	1.5	1.5	1.5
	Screw	5%	(x.5)	2	2	2	2	2	2	1	1	1	1	1	1	1	1	1	1	1	1	2	2.5	2.5	2.5	2.5	2.5
	Mag/Cent	5%	(x.5)	2	1.5	1.5	1.5	1.5	1.5	2	1.5	1.5	1.5	1.5	1.5	2	1	1	1	1	1	3	2	2	2	2	2
Sound Level/ Attenuation		5%	(x.5)	2	1.5	1.5	1.5	1.5	1.5	2	1.5	1.5	1.5	1.5	1.5	2	1.5	1.5	1.5	1.5	1.5	2	1.5	1.5	1.5	1.5	1.5
<b>TOTAL</b>		<b>100%</b>		<b>48</b>	<b>45</b>	<b>45</b>	<b>45</b>	<b>45</b>	<b>45</b>	<b>48</b>	<b>42</b>	<b>42</b>	<b>42</b>	<b>42</b>	<b>42</b>	<b>12</b>	<b>17</b>	<b>17</b>	<b>17</b>	<b>17</b>	<b>17</b>	<b>35</b>	<b>26.5</b>	<b>26.5</b>	<b>26.5</b>	<b>26.5</b>	<b>26.5</b>

Equipment Quality-Performance		5) 16-20 years working equip., 4) 11-15 years working equip., 3) 6-10 years working equip., 2) <5 years working equip. 1) <1 years working equip.
Service and Support		5) Used in the past, great relationship with manufacturer, 3) Used in the past, not always supported by manufacturer, 1) Never used in the past
Longevity of Rep. to Equip.		5) 10+ years of representing 3) 5 years of representing 1) <5 years of representing
Equipment Price		5) Lowest 3) Mid range 1) Highest <span style="float: right;">11</span>
5 Year PM/ Warranty		5) Manufacturer offers 5 year P/L/R and 5 year PM, 3) Manufacturer offers 5 year P/L/R OR 5 year PM, 1) Manufacturer doesn't offer any warranty
Lead Time	Scroll	5) <10 weeks, 4) 11-15 weeks, 3) 16-20 weeks 2) 26-30 weeks, 1) >30 weeks
	Screw	5) <15 weeks, 4) 16-20 weeks, 3) 21-25 weeks 2) 26-30 weeks, 1) >31 weeks
	Mag/Cent	5) <15 weeks, 4) 16-20 weeks, 3) 21-25 weeks 2) 26-30 weeks, 1) >31 weeks
Sound Level/ Attenuation		5) 76-80 DB, 3) 81-85 DB, 1) 86-90 DB

Important Note: York chillers weren't evaluated based on price and past performance

## Daikin Chiller Recommendations (32 Chillers)

Campus Location	Area on Campus	Equipment Type	Size of Chiller	Recommended Manufacturer	Manufacturer Rep.
Bradley	Science	Scroll	125 ton	Daikin	HTS
Bush	Gym	Scroll	125 ton	Daikin	HTS
Camelot	Cafeteria and Classrooms	Scroll	90 ton	Daikin	HTS
Camelot	Cafeteria and Classrooms	Scroll	90 ton	Daikin	HTS
Eisenhower	Science	Scroll	125 ton	Daikin	HTS
Garner	Science	Scroll	125 ton	Daikin	HTS
Huebner	Main Building	Scroll	90 ton	Daikin	HTS
Johnson	Central Plant	Mag Bearing	650 ton	Daikin	HTS
Johnson	Central Plant	Mag Bearing	650 ton	Daikin	HTS
Johnson	Central Plant	Screw	275 ton	Daikin	HTS
Krueger	Main	Scroll	125 ton	Daikin	HTS
Krueger	Science	Scroll	125 ton	Daikin	HTS
Larkspur	Main	Scroll	100 ton	Daikin	HTS
Larkspur	Main	Scroll	100 ton	Daikin	HTS
Lopez	Main	Mag Bearing	325 ton	Daikin	HTS
Lopez	Main	Scroll	125 ton	Daikin	HTS
Maintenance Complex	Transpotation Training Area	Scroll	30 ton	Daikin	HTS
Northwood	Annex	Scroll	70 ton	Daikin	HTS
Oak Grove	Main	Scroll	125 ton	Daikin	HTS
Oak Grove	Main	Scroll	125 ton	Daikin	HTS
Oak Meadow	Main	Scroll	160 ton	Daikin	HTS
Oak Meadow	Main	Scroll	160 ton	Daikin	HTS
Roan Forest	Main	Scroll	150 ton	Daikin	HTS
Roan Forest	Main	Scroll	150 ton	Daikin	HTS
Roosevelt	Data	Scroll	90 ton	Daikin	HTS
Walzem	Main	Scroll	100 ton	Daikin	HTS
Walzem	Main	Scroll	100 ton	Daikin	HTS
Wetmore	Main	Scroll	150 ton	Daikin	HTS
Wetmore	Main	Scroll	150 ton	Daikin	HTS
White	Science	Scroll	125 ton	Daikin	HTS
Windcrest	Library and Classroom	Scroll	100 ton	Daikin	HTS
Windcrest	Library and Classroom	Scroll	100 ton	Daikin	HTS

With =

5 year parts, labor, refrigerant warranty

5 year Annuals/digital reports

Architectural Louvered Panels

## TRANE Chiller Recommendations (25 chillers)

Campus Location	Area on campus	Equipment Type	Size of Chiller	Recommended Manufacturer	Manufacturer Rep
Hardy Oak	Main	Screw	155 ton	Trane	Trane
Hardy Oak	Main	Screw	155 ton	Trane	Trane
Harmony Hills	Main	Screw	140 ton	Trane	Trane
Harmony Hills	Main	Screw	140 ton	Trane	Trane
Harris	Main	Mag Bearing	325 ton	Trane	Trane
Harris	Main	Mag Bearing	325 ton	Trane	Trane
Harris	Main	Scroll	125 ton	Trane	Trane
Hidden Forest	Annex	Scroll	100 ton	Trane	Trane
MacArthur	Main	Screw	300 ton	Trane	Trane
MacArthur	Main	Screw	300 ton	Trane	Trane
MacArthur	Gym	Scroll	125 ton	Trane	Trane
Nimitz	Main	Scroll	125 ton	Trane	Trane
Royal Ridge	Main	Screw	185 ton	Trane	Trane
Royal Ridge	Main	Screw	185 ton	Trane	Trane
Stone Oak	Main	Scroll	90 ton	Trane	Trane
Tejeda	Gym	Scroll	125 ton	Trane	Trane
Tejeda	Main	Screw	170 ton	Trane	Trane
Tejeda	Main	Screw	170 ton	Trane	Trane
Tejeda	Main	Screw	170 ton	Trane	Trane
Tejeda	Main	Screw	170 ton	Trane	Trane
Wilderness Oak	Main	Screw	200 ton	Trane	Trane
Wilderness Oak	Main	Screw	200 ton	Trane	Trane
Wood	Main	Screw	300 ton	Trane	Trane
Wood	Main	Screw	300 ton	Trane	Trane
Wood	Science	Scroll	125 ton	Trane	Trane

With =

5 year parts, labor, refrigerant warranty

5 year Annuals/digital reports

Architectural Louvered Panels



# NORTH EAST INDEPENDENT SCHOOL DISTRICT

Date: March 23, 2026

Presenter: Deb Caldwell

Subject: Possible action regarding Right of Way Agreements with Outer Loop Utility at Reagan High School and Hill Middle School

Related Attachments  
Page(s):

## ACTION ITEM

### **BACKGROUND INFORMATION**

Outer Loop Utility LLC sent a notice to North East ISD to acquire easement interests for the construction of an underground natural gas pipeline on portions of the district properties of Ronald Reagan High School and Tex Hill Middle School. Outer Loop Utility offered a fair market value for the easement interests of \$274,091 at Reagan High School and \$258,256 at Hill Middle School. The fair market value was obtained through an appraisal from CBRE Valuation & Advisory Services. There is no expectation or intent by the utility to interfere with the educational operations of either property. A presentation about the project was made at the March 2, 2026 Regular Board Meeting.

Howard Energy Partners will construct, own, operate and maintain the Outer Loop Utility pipeline and easement. CPS Energy will be a customer, transporting natural gas on the Outer Loop Utility pipeline. The Outer Loop Utility is designated as a public utility, similar to water, sewer, and telecommunications lines.

### **ADMINISTRATIVE CONSIDERATION**

Outer Loop Utility has the power to condemn the easement interests, if necessary, pursuant to Chapter 21 of the Texas Property Code.

### **BUDGETARY CONSIDERATION**

Outer Loop will pay NEISD a total offer of \$532,347.

### **ADMINISTRATIVE RECOMMENDATION**

The District recommends that the Board of Trustees approve the Right-Of-Way Agreements with Outer Loop Utility, LLC.

### **BOARD ACTION REQUIRED**

Approval/Disapproval

NOTICE OF CONFIDENTIALITY RIGHTS: IF YOU ARE A NATURAL PERSON, YOU MAY REMOVE OR STRIKE ANY OF THE FOLLOWING INFORMATION FROM THIS INSTRUMENT BEFORE IT IS FILED FOR RECORD IN THE PUBLIC RECORD: YOUR SOCIAL SECURITY NUMBER OR YOUR DRIVER'S LICENSE NUMBER

**RIGHT-OF-WAY AGREEMENT**

STATE OF TEXAS           §  
  §  
COUNTY OF BEXAR       §

For and in consideration of Ten and No/100 Dollars (\$10.00) and other good and valuable consideration, the receipt and sufficiency of which is hereby acknowledged, the undersigned **North East Independent School District**, a Texas municipal corporation, whose address is 8961 Tesoro Drive, Suite 602, San Antonio, Texas 78217, (“Grantor”, whether one or more) does hereby GRANT, BARGAIN, SELL and CONVEY to **Outer Loop Utility, LLC**, a Delaware Limited Liability Company, its successors and assigns (“Grantee”), whose address is 16211 La Cantera Pkwy., Suite 202, San Antonio, Texas 78256, the right, privilege, and permanent, non-exclusive, unobstructed easement and right-of-way fifty feet (50’) in width as described and depicted on Exhibit A, attached hereto and incorporated herein (the “Easement”), to survey, lay, construct, maintain, operate, patrol, protect, test, change the size of (but not more than the maximum diameter herein), relocate within the Easement, repair, alter, access, replace, improve, and remove or, with respect to any pipeline no longer in use that is below four (4) feet underground, abandon in place with any remaining unused pipeline being remediated, capped, and/or removed if needed to allow Grantor to enhance or improve its property in connection with its educational mission, one (1) pipeline, not to exceed twenty (20”) in nominal diameter, together with above- or below-ground appurtenant facilities including, but not limited to, equipment, infrastructure, LACT units, valves, vents, communication facilities, electric facilities, data transmission, fiber optic facilities, pumps, drips, taps, meters, risers, regulators, cathodic protection equipment, pigging facilities, test leads, and aerial markers (such pipeline and facilities, together, “Pipeline”), for the transportation of natural gas, natural gas liquids (including its derivatives and products), gaseous products, crude oil, water, and other hydrocarbons or minerals, whether in gaseous or liquid form, across, under and upon the Easement on lands of Grantor in the County of Bexar, State of Texas, described on Exhibit A. Grantee agrees to provide written notice to Grantor in the event Grantee abandons or intends to abandon the pipeline contemplated under this Agreement.

Grantee shall have all of the rights and benefits reasonably necessary or convenient for the full enjoyment or use of the rights herein granted, including but not limited to the right of ingress and egress within the Easement, with reasonable notice to Grantor so as to minimize any disruption to Grantor’s regular school operations and minimize any safety and/or security issues to Grantor’s students and schools from Grantee’s ingress and egress. It is further agreed as follows:

1. Grantor shall have the right to use and enjoy the surface of said Easement described herein (but not any areas where above-ground facilities are installed within the Easement), provided such use shall not interfere with Grantee’s full enjoyment or use of the rights herein granted. Grantor shall not erect, construct, nor permit the erection or construction of any houses,

lakes, ponds, dams, wells, other pipelines, or other obstructions that might interfere with any of Grantee's rights hereunder, on, or within said Easement. Grantor is also not permitted to remove soil or change the slope or grade of the Easement in such a manner that interferes with Grantee's operation of the pipeline, impound surface water on the Easement, or plant trees or other landscaping (other than grasses) on the Easement, unless otherwise required by applicable local ordinance and/or applicable state and/or federal law or regulation and with prior written notice to Grantee. Absent direct interference with the operation of the pipeline, nothing in this Agreement prevents Grantor from enhancing or improving its property for the purpose of providing educational services to students. Grantor agrees not to alter, move, or remove Grantee's survey markings.

2. Grantee agrees that where any damage results from Grantee's or its employees' or agents' use of the improved roads of, or other improvements, to include any trees or similar vegetation on, Grantor's lands for the purpose of ingress and egress, said roads shall be restored within a reasonable time as nearly as practicable to the condition as they existed prior to Grantee's use.

3. Grantee may also utilize temporary easements fifty feet (50') wide as depicted on Exhibit A, along with any additional temporary workspace in the width depicted on Exhibit A, if any, (collectively, the "Temporary Easement") during any period of construction or other operation requiring the use of the Temporary Easement. Grantee shall also not erect any temporary structure on the Temporary Easement absent Grantor's written consent. Upon completion of any such construction or other operation, the Temporary Easement shall automatically expire. Where appropriate, the Temporary Easement is included in the term "Easement." In addition, Grantor agrees that in the event the route of the Pipeline should cross any roads, railroads, creeks, or other waterways located on Grantor's land, or in the event that extra workspace is otherwise required in the exercise of the rights granted hereunder, then Grantee shall have the right and temporary access to additional temporary workspace, with written approval of Grantor, at no additional cost, at roads, railroads, creeks, ditches, waterways, or at areas with unique terrain considerations as depicted on Exhibit A, and such additional temporary workspace will be treated as part of the Temporary Easement. The Temporary Easement shall be non-exclusive, except that if Grantee is utilizing the Temporary Easement for construction, Grantor may not also utilize such area until such time as Grantor's construction is complete. For purposes of this Agreement, "construction" shall mean only the period of time necessary to complete the installation and restoration of the specific portions of the pipeline specifically contemplated in this Agreement.

4. Grantee shall have the right to remove or cut all fences and install, maintain, repair, replace, and use gates in all fences which now cross or in the future may cross the Easement, or which provide access to Grantor's property or the Easement. Grantor shall allow Grantee to install its own lock on the gates if Grantee so chooses. If Grantee installs above-ground appurtenant facilities on the Easement, Grantee may fence those above-ground facilities and install, maintain, and use gates in those fences to the exclusion of all others, including Grantor. Any such above-ground appurtenant facilities and/or fences Grantee intends to install or maintain shall be subject to Grantor's approval, with such approval shall not to be unreasonably withheld and should not interfere with Grantor's use of its Property for its educational mission.



5. Within a reasonable time after the laying and installation of the Pipeline, or within a reasonable time after removal of the Pipeline or other operations that damage the surface of the Easement, Grantee agrees to restore the surface of the Easement, as nearly as reasonably feasible, to its condition immediately prior to such operations.

6. The pipeline to be laid hereunder shall be buried to a minimum depth of thirty-six inches from the top of the pipe to the then-existing surface of the ground (including any drainage ditches, creeks, and roads) except that at those locations where rock is encountered, the Pipeline may be buried at a lesser depth of at least twelve inches.

7. Grantee agrees to pay actual monetary damages for any physical damage to growing crops, trees, foliage, fences, gates, other structural improvements, and all other property owned by or under the control of Grantor (except for trees and shrubbery within the Easement and property installed in violation of this Agreement, unless such trees and shrubbery were required to be installed by applicable local ordinance and/or applicable state or federal law or regulation) caused by maintenance, inspection, replacement, operation, or removal of its Pipeline; however, the initial consideration paid to Grantor shall include all damages for initial construction of the Pipeline, including but not limited to damages to gates, fences, vegetation, crops, and income loss for existing leases or agricultural production. If Grantee repairs, replaces or removes the Pipeline or any part thereof, Grantor shall be paid surface damages for the disturbed area based on the prevailing rates being paid in the area at the time.

8. Grantee shall use the Easement solely for the purposes specified in this Agreement. There shall be no hunting or fishing on the Easement or any of Grantor's lands by Grantee, its officers, agents, employees, contractors, invitees, guests, or representatives at any time. Grantee shall not permit any firearms or fishing equipment to be brought out of vehicles upon the Easement. Grantee may not grant a third party access to the Easement for a purpose that is not related to the construction, safety, repair, maintenance, inspection, replacement, operation, or removal of the Pipeline.

9. Grantee has the right to trim or cut down or eliminate trees or shrubbery, in the sole judgment of Grantee, its successors and assigns, as may be reasonably necessary for the initial installation of the Pipeline or, after initial installation, to prevent possible interference with the safety of the Pipeline. Grantee also has the right to remove or prevent possible hazard to the Pipeline, and the right to remove or prevent the construction of any and all buildings, structures, reservoirs, or other obstructions on the Easement (including but not limited to any violation of Section 1 herein) which, in the sole judgment of Grantee, may endanger or interfere with the safety of the Pipeline. Grantee must ensure that any removal of trees or shrubbery shall be in accordance with any and all applicable local ordinances or regulations pertaining to tree and shrubbery maintenance, to include replacement of any trees or shrubbery in another part of Grantor's property that is required by such local ordinance or regulation at Grantee's expense. Should Grantee seek to prevent Grantor from making any improvements to Grantor's property utilizing this clause, Grantee agrees to work cooperatively with Grantor to determine the safest possible methods to accomplish Grantor's need for improvements necessary to accomplish its educational mission. Such cooperation will include monetary contribution to offset any additional costs incurred by Grantor for having to utilize any other portion of its property to accomplish the same project and

purpose. During operation of the Pipeline, Grantee will maintain the Easement and the Pipeline in good repair and appearance and in a manner consistent with the purposes for which the Easement will be used by Grantee. All construction debris shall be cleaned up and removed by Grantee at their sole expense from the Easement and Grantor's lands upon completion of installation and construction of the Pipeline. Grantee shall be responsible for any damages to Grantor's property, to include any facilities on Grantor's property, caused by the Easement and Pipeline.

10. IF ALLOWED BY APPLICABLE LAW, GRANTEE AGREES TO INDEMNIFY AND HOLD GRANTOR HARMLESS FROM ANY THIRD-PARTY CLAIMS, DEMANDS, CAUSES OF ACTION, LIABILITY, OR DAMAGES OCCASIONED BY GRANTEE'S USE AND/OR OPERATION OF THE PIPELINE ON THE EASEMENT GRANTED HEREIN; PROVIDED HOWEVER, GRANTEE SHALL NOT INDEMNIFY GRANTOR AND SHALL NOT BE LIABLE FOR INJURIES OR DAMAGES RESULTING FROM THE NEGLIGENCE OR INTENTIONAL ACT OF GRANTOR, THE OPERATOR(S) OF GRANTOR'S SURFACE ESTATE, OR ANY OF THEIR AGENTS, REPRESENTATIVES, LICENSEES, CONTRACTORS, EMPLOYEES, OR TENANTS.

11. Grantee agrees to comply in all material respects at its sole cost, with all applicable federal, state and local laws, rules, and regulations which are applicable to Grantee's activities hereunder, including without limitation, the construction, use, operation, maintenance, repair and service of Grantee's Pipeline.

12. The estate and interest granted herein is only an easement and hence does not cover or include any right, title, interest or estate in any of the oil, gas or other minerals lying in, on, under or which may be produced from the Easement premises, nor does the same confer or imply any other right or interest not expressly authorized herein; provided, however, that Grantor shall not be permitted to drill or operate equipment for the production or development of minerals on the Easement, but it will be permitted to extract the oil and other hydrocarbons from and under the Easement by directional drilling and other means, so long as such activities do not damage, destroy, injure, and/or interfere with Grantee's use of the Easement or the Pipeline.

13. This Agreement may be executed in several counterparts, each of which shall be an original of this Agreement but all of which, when taken together, shall constitute one and the same Agreement and be binding upon the parties who executed any counterpart, regardless of whether it is executed by all parties named herein.

14. Subject to Grantor's written approval, which said approval shall not be unreasonably withheld, conditioned or delayed, with respect to non-affiliate assignees, Grantee may assign this grant in whole or in part, in which event Grantor acknowledges and agrees that the assignee shall succeed to the rights and obligations of Grantee to the extent conveyed in such assignment. Grantee will remain responsible for any obligation it incurs under this Agreement prior to any such assignment. Except for assignments to an affiliate or to a successor through merger, consolidation, or other sale or transfer, Grantee will provide advance written notice within 30 days prior the transfer to the Chief Operations Officer of the Grantee and subsequently when Grantee assigns the interest under this Agreement to another entity. Grantor is under no obligation

to and will not recognize any assignment by Grantee to any non-affiliate assignee which has not been approved by Grantor.

15. It is agreed that this grant covers the entire agreement between the parties and that no representation or statements, verbal or written, have been made modifying, adding to, or changing the terms of this Agreement. Grantor represents that Grantor owns the lands described in Exhibit A.

16. It is agreed that this Agreement shall not be filed in any public records. In lieu of filing this Agreement for record, Grantor and Grantee agree that a memorandum of this Agreement making appropriate reference hereto shall be filed for record in the county wherein the property is located, provided that the publicly filed memorandum shall provide notice that there are terms, conditions, and limitations in this Agreement which run with the title to the Easement granted hereby. In the event of any conflict between recitations contained in such memorandum and those contained herein, the provisions of this Agreement shall control.

17. All of the terms of this Agreement shall be binding upon and shall be for the benefit of the heirs, successors, representatives, and assigns of Grantor and Grantee, and the agreements herein contained shall be covenants running with the land affected thereby and shall inure to the benefit of and be binding upon Grantor and Grantee and their respective heirs, executors, administrators, successors, and assigns. Grantee, its successors and assigns, may not use the Easement for any use other than a use stated in this Agreement, without the express written consent of Grantor.

18. Section 1445 of the Internal Revenue Code provides that a grantee of a real property interest in this country must withhold tax if the grantor is a foreign person. To inform Grantee that withholding of tax is not required upon my disposition of a U.S. real property interest, each Grantor hereby certifies under oath and subject to penalties of perjury that he/she/it is not a foreign person, foreign corporation, foreign trust or foreign estate, for purposes of Internal Revenue Code compliance. Grantor's identifying information as required to certify that Grantor is not a foreign person or entity, including Grantor's U.S. taxpayer identifying number and home or office address, is located on each Grantor's I.R.S. form W-9, in Grantee's possession.

19. By entering into this Agreement, Grantor warrants that Grantor is the fee owner of the property herein described and that Grantor has the authority to convey said rights and interest to the Grantee. TO THE EXTENT PERMITTED BY APPLICABLE LAW, GRANTOR FURTHER AGREES TO DEFEND, INDEMNIFY, AND HOLD HARMLESS GRANTEE, IT SUCCESSORS AND ASSIGNS FROM ANY AND ALL CLAIMS DISPUTING GRANTOR'S LEGAL RIGHT TO CONVEY THE EASEMENT AND ALL RIGHTS HEREUNDER TO GRANTEE. GRANTOR DOES NOT WAIVE ANY IMMUNITY OR OTHER LEGAL DEFENSE AFFORDED TO IT UNDER ANY APPLICABLE STATE AND/OR FEDERAL LAW BY VIRTUE OF ITS STATUS AS A POLITICAL SUBDIVISION OF AND PUBLIC SCHOOL DISTRICT IN THE STATE OF TEXAS.

20. This Agreement shall be governed by and construed in accordance with the laws of the State of Texas and Bexar County shall be the proper venue for any matter arising under this Agreement.

21. At the time of execution of this Agreement, the survey plat and legal description intended to be attached hereto as Exhibit A was still being prepared. Grantor agreed to execute this Agreement using the sketch previously attached as Exhibit "A-1" for a depiction of the centerline of the right-of-way. Grantor agrees that after a survey and legal description of the easement is completed, the survey and legal description will be attached hereto as Exhibit A, replacing Exhibit "A-1". Grantor agrees to fully cooperate and execute any additional documents necessary to facilitate this process. If Grantee requires additional temporary workspace and/or permanent easements as reflected in the final surveys and plats that are not contemplated by this Agreement, then an additional payment shall be made to Grantor on a pro rata basis of the amount agreed to as consideration herein for the easement. If the final survey does not increase or decrease the size of the easement or include additional temporary workspace other than what is described herein, then Grantor shall retain all consideration paid to it by Grantee with no refund required.

22. Grantee shall inspect, monitor, and maintain the Pipeline in accordance with applicable federal and state laws, rules, regulations, permits, and accepted industry standards for pipeline safety and integrity management, which such shall include, without limitation, the following operations and/or activities: (i) prior to placing the Pipeline into service, Grantee shall perform appropriate construction quality control and commissioning activities, including pressure testing, weld inspections, and other testing and verification measures customarily used in the industry to confirm the integrity of the Pipeline; (ii) following commencement of service, Grantee shall monitor the Pipeline's operating conditions through its control and monitoring systems, including pressures, flows, and other relevant operational data, on a continuous basis, twenty-four (24) hours per day, seven (7) days per week, as applicable to Grantee's system operations; (iii) Grantee shall perform periodic in-line inspections of the Pipeline using Inline inspection tools, or other functionally similar or applicable/approved integrity assessment methods, at intervals consistent with applicable law, regulatory requirements, prudent industry practice, and the age of the Pipeline; (iv) Grantee shall install and operate mainline valves, isolation valves, and related safety devices designed to segment the project and permit isolation and depressurization of affected sections in the event of an emergency, maintenance activity, or integrity concern; and (v) Grantee shall maintain emergency response procedures and appropriate response capabilities, including coordination with qualified emergency response personnel, contractors, and local emergency responders, as reasonably necessary to address incidents involving the Pipeline. Notwithstanding the foregoing, if future inspection, monitoring, and maintenance practices within the industry make any operation and/or activity in items (i) through (v) above obsolete, then Grantee may forego compliance with such obsolete provision(s) as long as Grantee complies with the corresponding, current, and applicable federal and state laws, rules, regulations, permits, and accepted industry standards. In the event of any such obsolescence, Grantee shall notify Grantor in writing of the same and any required and/or additional actions Grantee will take to comply with the corresponding current and applicable federal and state laws, rules, regulations, permits, and accepted industry standards, with the primary goal in mind of safety for Grantor's students, staff, and community by maintaining pipeline safety and integrity. Any alternative inspection, monitoring, or maintenance actions that Grantee proposes to undertake in lieu of the obsolete provision(s) shall be subject to Grantor's approval, which shall not unreasonably withheld.

TO HAVE AND TO HOLD the rights, privileges, and authority hereby granted unto Grantee, its successors and assigns, forever, and Grantor does hereby agree to warrant and defend

all and singular said Easement unto Grantee, its successors and assigns, against every person or entity whomsoever claiming the same or any part of it.

**[Signature Pages to Follow]**





GRANTEE:

**Outer Loop Utility, LLC**

By: Howard Midstream Energy Partners, LLC  
its sole member

By: \_\_\_\_\_  
Name: Mitch Smolik  
Title: Vice President, Operations and Engineering

STATE OF TEXAS                   §  
  §  
COUNTY OF \_\_\_\_\_       §

This instrument was acknowledged before me on this \_\_\_\_\_ day of \_\_\_\_\_, 20\_\_, by Mitch Smolik, the Vice President, Operations and Engineering of Howard Midstream Energy Partners, LLC, a Delaware limited liability company, the sole member of Outer Loop Utility, LLC, a Delaware limited liability company, on behalf of said limited liability company.

\_\_\_\_\_  
Notary Public in and for the State of Texas

**EXHIBIT "A"**  
**BEXAR COUNTY, TEXAS**  
**PIPELINE EASEMENT DESCRIPTION**  
**OUTER LOOP - SEGMENT 3**  
**TRACT NO.: TX-BX-03-276.0-R**

DESCRIPTION OF A 2.36 ACRE PIPELINE EASEMENT, SITUATED IN THE WILLIAM HOTCHKISS SURVEY NO. 92, ABSTRACT 337, BEXAR COUNTY, TEXAS, IN A CALLED 80.75 ACRE TRACT OF LAND, RECORDED IN VOLUME 9110, PAGE 1823, OFFICIAL PUBLIC RECORDS BEXAR COUNTY, TEXAS (O.P.R.B.C.T.), THE SIDELINES OF THE HEREIN DESCRIBED PIPELINE EASEMENT BEING LENGTHENED OR SHORTENED TO MEET THE BOUNDARIES OF SAID TRACT, AND BEING MORE PARTICULARLY DESCRIBED BY METES AND BOUNDS AS FOLLOWS:


**POINT OF BEGINNING (P.O.B.: X: 2154879.57, Y: 13779958.52)** of the herein described easement being at the East line of said 80.75 tract, and the West line of a called 4.953 acre tract, described as "Tract 2 known as Tract 13" recorded in Volume 17020, Page 1158, (O.P.R.B.C.T.) from which a 1/2-inch iron rod found for the Southeast corner of said 80.75 acre tract of land bears South 07°26'19" East, a distance of 54.59 feet;

**THENCE**, South 77°00'14" West, a distance of 1,564.09 feet;  
**THENCE**, South 55°07'37" West, a distance of 99.35 feet;  
**THENCE**, South 76°53'29" West, a distance of 718.77 feet;  
**THENCE**, South 31°45'59" West, a distance of 24.53 feet;  
**THENCE**, South 76°58'04" West, a distance of 70.46 feet;  
**THENCE**, North 31°45'59" East, a distance of 66.73 feet;  
**THENCE**, North 76°53'29" East, a distance of 699.75 feet;  
**THENCE**, North 74°24'43" East, a distance of 54.17 feet;  
**THENCE**, North 34°05'37" East, a distance of 58.03 feet;  
**THENCE**, North 76°43'49" East, a distance of 375.23 feet;  
**THENCE**, North 57°27'51" West, a distance of 17.24 feet;  
**THENCE**, North 75°40'50" East, a distance of 46.66 feet;  
**THENCE**, North 77°00'14" East, a distance of 1,214.49 feet;  
**THENCE**, South 07°26'19" East, a distance of 50.24 feet, to the **POINT OF BEGINNING**, containing 2.36 acres or 102,703 square feet.

Together with temporary workspaces required during construction as depicted on attached plat.

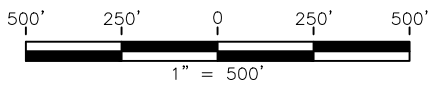
All bearings, distances and coordinates contained herein are grid, based upon the Texas State Plane Coordinate System, South Central Zone, of the North American Datum 1983 (NAD83, Realization 2011, Epoch 2010.0000), in U.S. Survey Feet.

A survey exhibit of even date accompanies and is considered an integral part of this easement description.

  
**Codi Lamberson**  
**Texas RPLS No. 6480**



**Date: 12-16-2025**  
**Date of Field Survey: October, 2025**  
**Date of Revision: 2-3-2026**



# EXHIBIT "A"

## BEXAR COUNTY, TEXAS

### EASEMENT PLAT

TOTAL EASEMENT: 2.36 ACRES  
 (102,703 SQUARE FEET)  
 TEMPORARY WORKSPACE: 2.36 ACRES



LEGEND	
	PIPELINE EASEMENT
	TEMPORARY WORKSPACE
	ADDITIONAL TEMPORARY WORKSPACE (A.T.W.S.)
	EXISTING PIPELINE
	FENCE
	ROAD WAY
	SUBJECT TRACT
	OVERHEAD UTILITY LINE
	WATER LINE
	FIBER OPTIC LINE
	MONUMENT FOUND

LINE TABLE		
LINE	BEARING	DISTANCE
1	S 77°00'14" W	1564.09'
2	S 55°07'37" W	99.35'
3	S 76°53'29" W	718.77'
4	S 31°45'59" W	24.53'
5	S 76°58'04" W	70.46'
6	N 31°45'59" E	66.73'
7	N 76°53'29" E	699.75'
8	N 74°24'43" E	54.17'
9	N 34°05'37" E	58.03'
10	N 76°43'49" E	375.23'
11	N 57°27'51" W	17.24'
12	N 75°40'50" E	46.66'
13	N 77°00'14" E	1214.49'
14	S 07°26'19" E	50.24'

EL PASO IRRIG. CO.  
 SURVEY 92.1  
 A-845

WILLIAM HOTCHKISS  
 SURVEY 92  
 A-337

TX-BX-03-275.0-R  
 CALLED 19.881 ACRES  
 TRACT 1 KNOWN AS TRACT 12  
 VOLUME 17020 PAGE 1158  
 O.P.R.B.C.T.

TX-BX-03-275.0-R  
 CALLED 4.953 ACRES  
 TRACT 2 KNOWN AS  
 TRACT 13  
 VOLUME 17020 PAGE 1158  
 O.P.R.B.C.T.

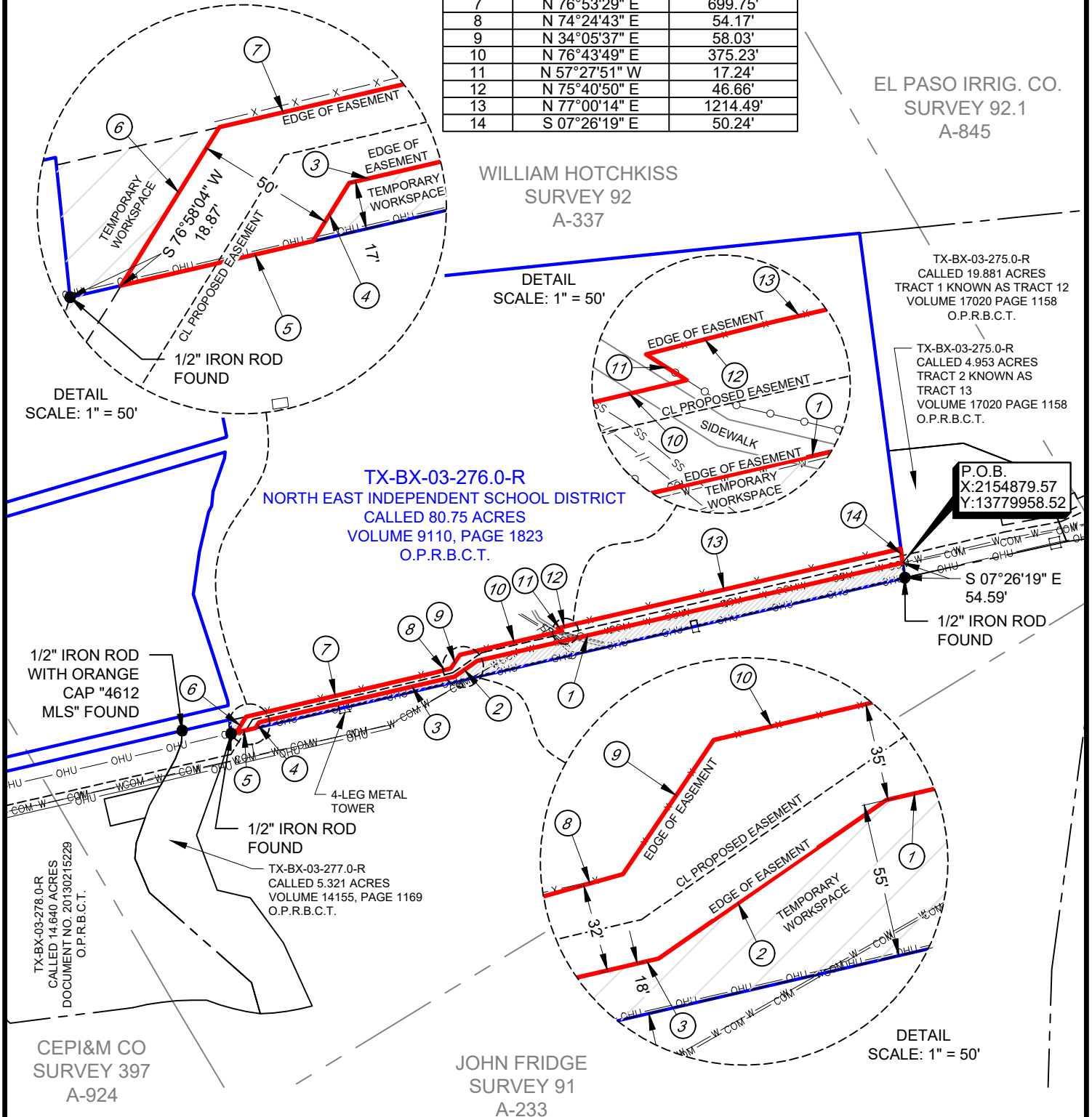
P.O.B.  
 X:2154879.57  
 Y:13779958.52

TX-BX-03-276.0-R  
 NORTH EAST INDEPENDENT SCHOOL DISTRICT  
 CALLED 80.75 ACRES  
 VOLUME 9110, PAGE 1823  
 O.P.R.B.C.T.

DETAIL  
 SCALE: 1" = 50'

DETAIL  
 SCALE: 1" = 50'

DETAIL  
 SCALE: 1" = 50'



- CERTIFICATION IS MADE ONLY TO THE LOCATION OF THIS EASEMENT ACCORDING TO EVIDENCE AND/OR LINES OF OCCUPATION OBSERVED UPON THE DATE OF THIS FIELD SURVEY. ONLY UTILITIES/EASEMENTS THAT WERE VISIBLE AND APPARENT ON THE DATE OF THIS SURVEY, WITHIN/ADJOINING THE DESCRIBED EASEMENT, HAVE BEEN LOCATED, SHOWN AND/OR DESCRIBED HEREON OF WHICH I HAVE KNOWLEDGE OF. THIS CERTIFICATION IS LIMITED TO THOSE PERSONS OR ENTITIES SHOWN ON THE FACE OF THIS EXHIBIT, IS NON-TRANSFERABLE AND MADE FOR THIS TRANSACTION ONLY.
- TITLE INFORMATION HAS BEEN PROVIDED BY THE CLIENT; AS SUCH, OPEN RANGE FIELD SERVICES DOES NOT WARRANT OR GUARANTEE THAT ALL CONFLICTS, EASEMENTS OR ENCUMBRANCES ARE SHOWN. ADJOINER INFORMATION SHOWN OR DESCRIBED IS FOR INFORMATIONAL PURPOSES ONLY.
- ALL BEARINGS, DISTANCES AND COORDINATES CONTAINED HEREIN ARE GRID, BASED UPON THE TEXAS STATE PLANE COORDINATE SYSTEM, SOUTH CENTRAL ZONE, OF THE NORTH AMERICAN DATUM 1983 (NAD83, REALIZATIONS 2011, EPOCH 2010.0000), IN U.S. SURVEY FEET.
- THE OUTER LIMITS OF THE PIPELINE EASEMENT EXTENDS OR SHORTENS TO THE RESPECTIVE TRACT LINES. TEMPORARY WORKSPACE LIES ADJACENT AND CONTINUOUS TO THE PIPELINE EASEMENT UNLESS NOTED OTHERWISE.
- EASEMENT CENTERLINE IS NOT NECESSARILY THE SAME AS PIPELINE CENTERLINE. THE INTENT IS FOR THE PIPELINE TO BE CONSTRUCTED WITHIN THE PIPELINE EASEMENT AS DESCRIBED HEREON.
- EASEMENT DESCRIPTION OF EVEN DATE ACCOMPANIES AND IS A PART OF THIS SURVEY EXHIBIT.

*Codi Lamberson*

2/3/2026

CODI LAMBERSON, R.P.L.S. 6480

REVISION				SURVEYED BY		
NO.	DESCRIPTION	BY	DATE	DRAWN BY	KS	11/13/25
1	ADD ATWS	CL	12-10-25	CHECKED BY	CL	11/13/25
2	ADJUST TWS	DG	01-21-26	PROJECT MGR.	DG	
3	RE-ROUTE	MRP	02-03-26			
				PROJ. NO. P25-112		
				DWG NAME: TX-BX-03-276.0-R_REV3.dwg		

OUTER LOOP  
 25  
 UTILITY, LLC

1503 S. BARNES, PAMPA, TX 79065  
 TBPELS No.: 10193994  
 OFFICE: 806-666-0770

39350 IH-10 WEST, BOERNE, TX 78006  
 TBPELS No.: 10194069  
 OFFICE: 830-816-5009

OUTER LOOP - SEGMENT 3

SHT 2 OF 2





26

Hill Middle School

50' WIDE PERMANENT EASEMENT







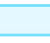


TWS

30' WIDE PERMANENT EASEMENT

ATWS

TWS

50' WIDE PERMANENT EASEMENT

-  30' WIDE PERMANENT EASEMENT
-  50' WIDE PERMANENT EASEMENT
-  ATWS
-  TWS
-  Proposed Pipeline
-  Survey Permanent Easement
-  Boundary Property Line
-  Survey Temporary Work Space
-  Survey Additional Temporary Work Space





**EXHIBIT "A"**  
**BEXAR COUNTY, TEXAS**  
**PIPELINE EASEMENT DESCRIPTION**  
**OUTER LOOP - SEGMENT 3**  
**TRACT NO.: TX-BX-03-303.0-R**

DESCRIPTION OF A 50 FOOT WIDE PIPELINE EASEMENT, BEING 25 FEET LEFT OF AND 25 FEET RIGHT OF THE HEREIN DESCRIBED EASEMENT CENTERLINE, SITUATED IN THE B.S.&F. CO. SURVEY NO. 11, ABSTRACT 114, BEXAR COUNTY, TEXAS IN A CALLED 83.43 ACRE TRACT OF LAND RECORDED IN VOLUME 3316, PAGE 1908, OFFICIAL PUBLIC RECORDS BEXAR COUNTY, TEXAS (O.P.R.B.C.T.), THE SIDELINES OF THE HEREIN DESCRIBED PIPELINE EASEMENT BEING LENGTHENED OR SHORTENED TO MEET THE BOUNDARIES OF SAID TRACT, AND BEING MORE PARTICULARLY DESCRIBED AS FOLLOWS:

**POINT OF BEGINNING (P.O.B.: X: 2132310.81, Y: 13774408.28)** of the herein described easement centerline being at the East line of said 83.43 acre tract, and the West line of a called 19.400 acre tract recorded in Volume 17692, Page 1024 (O.P.R.B.C.T.), from which a 1/2-inch iron rod with cap found for a corner on the East line of said 83.43 acre tract bears North 32°10'07" East, a distance of 31.29 feet;

**THENCE** South 86°29'52" West, a distance of 1,301.31 feet to the **POINT OF TERMINATION (P.O.T.: X: 2131011.93, Y: 13774328.79)**, at the West line of said 83.43 acre tract, and the East line of a called 5.773 acre tract recorded in Volume 13459, Page 2194 (O.P.R.B.C.T.), from which a 1/2-inch iron rod found on the West line of said 83.43 acre tract, for the Southeast corner of said 5.773 acre tract, bears South 16°45'17" West, a distance of 632.09 feet.

The herein described easement centerline having a total distance of 1,301.31 linear feet (78.87 rods), and said pipeline easement containing 1.49 acres of land.

All bearings, distances and coordinates contained herein are grid, based upon the Texas State Plane Coordinate System, South Central Zone, of the North American Datum 1983 (NAD83, Realization 2011, Epoch 2010.0000), in U.S. Survey Feet.

A survey exhibit of even date accompanies and is considered an integral part of this easement description.



**Codi Lamberson**  
Texas RPLS No. 6480



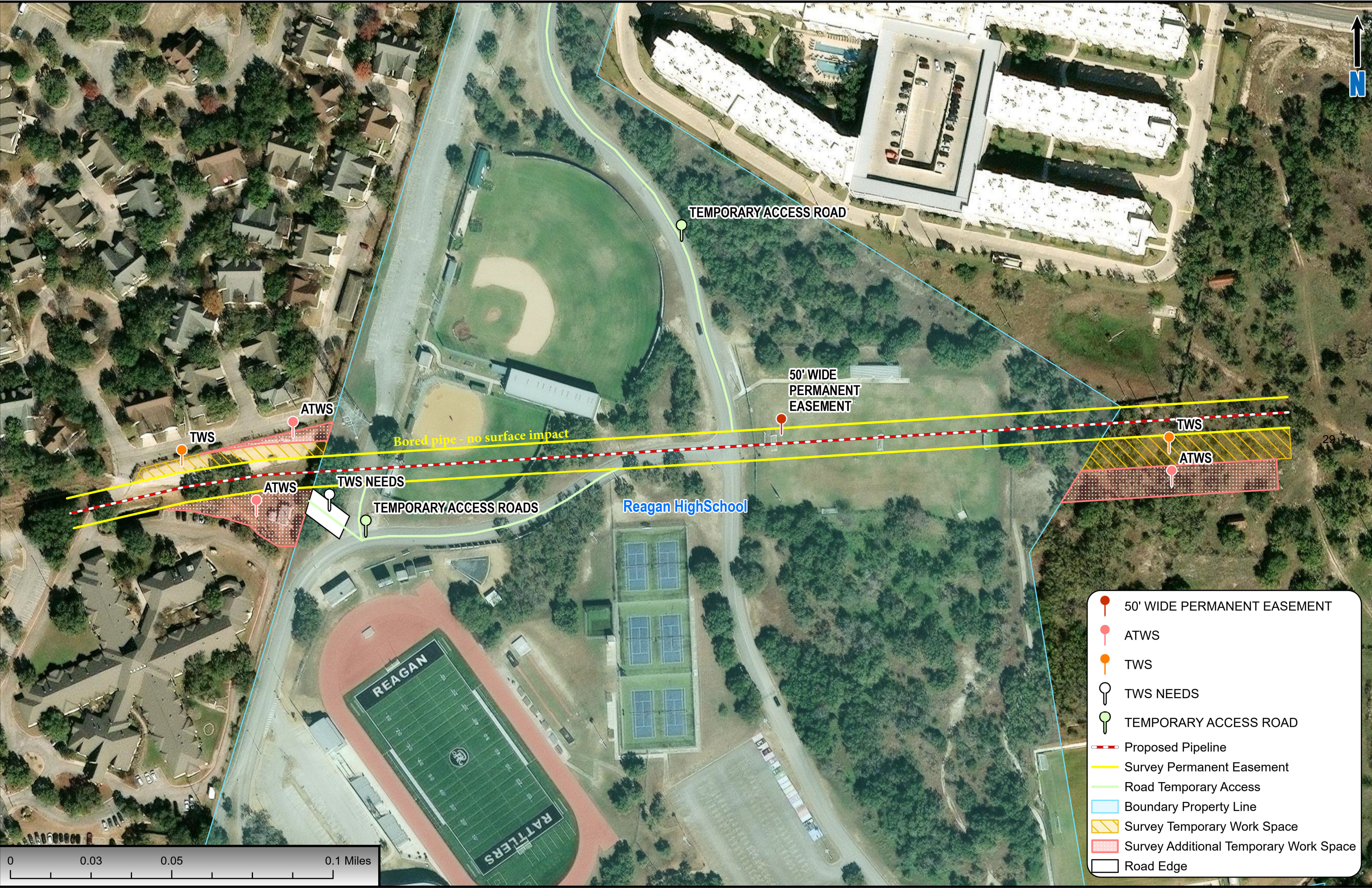
**Date: 12-15-2025**







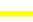
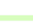




**Date of Field Survey: November, 2025**

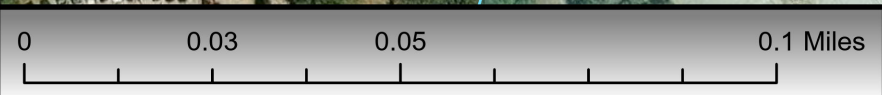
**Date of Revision 2: 1-19-2026**







-  50' WIDE PERMANENT EASEMENT
-  ATWS
-  TWS
-  TWS NEEDS
-  TEMPORARY ACCESS ROAD
-  Proposed Pipeline
-  Survey Permanent Easement
-  Road Temporary Access
-  Boundary Property Line
-  Survey Temporary Work Space
-  Survey Additional Temporary Work Space
-  Road Edge







## NORTH EAST INDEPENDENT SCHOOL DISTRICT

Date: March 23, 2026

Presenter: Deb Caldwell  
Jorge Cabello, Executive  
Director, Construction  
Management & Engineering

Subject: 2026 Construction Prevailing  
Wage Rates – Approval for  
North East ISD Construction  
Program

Related Page(s): Attachments

### CONSENT ITEM

#### **BACKGROUND INFORMATION**

Board Policy CV (Legal) and Government Code 2258.021 stipulates that the Board of Trustees shall determine the general prevailing rate of per diem wages for each craft or type of worker needed to execute a construction contract by either conducting a survey of the wages received by classes of workers employed on projects of a character similar to the contract work in the district in which the public work is to be performed; or using the prevailing wage rate as determined by the U.S. Department of Labor in accordance with the Davis-Bacon Act.

The proposed 2026 Construction Prevailing Wage Rates is attached as Appendix A and if approved will be effective beginning March 24, 2026. The proposed 2026 Prevailing Wage Rates reflect labor rates relevant to the current labor market conditions in the San Antonio/Bexar County area. A comparison of the 2025 and 2026 rates is included as Appendix B. A description of the occupation classifications is included as Appendix C.

#### **ADMINISTRATIVE CONSIDERATION**

The board shall determine the general prevailing rate of per diem wages as a sum certain, expressed in dollars and cents and the board's determination of the general prevailing rates of per diem wages is final.

#### **BUDGETARY CONSIDERATION**

Funding for North East ISD construction project(s) could be provided from multiple approved sources, such as the District's Maintenance & Operations (M&O) and/or 2025 Bond Program.

#### **ADMINISTRATIVE RECOMMENDATION**

It is recommended for the Board of Trustees to adopt the 2026 Annual Construction Prevailing Wage Rates, as provided in Appendix A for the North East ISD Construction Programs.

#### **BOARD ACTION REQUIRED**

Approval/Disapproval



APPENDIX A

**NORTH EAST INDEPENDENT SCHOOL DISTRICT  
2026 PREVAILING WAGE RATE**



Effective Date: March 24, 2026

Standard Occupation Classification Code	Classification	2026 Wage Rate (Adjusted by ECI)
37-3011	Landscaping and Groundskeeping Workers	\$17.98
47-2021	Brick Masons and Block Masons	\$25.55
47-2022	Stone Masons	\$23.00
47-2031	Carpenters	\$23.84
47-2041	Carpet Installers	\$25.95
47-2042	Floor Layers, Except Carpet, Wood, and Hard Tiles	\$20.65
47-2043	Floor Sanders and Finishers	\$23.09
47-2044	Tile and Marble Setters	\$21.56
47-2051	Cement Masons and Concrete Finishers	\$23.66
47-2053	Terrazzo Workers and Finishers	\$24.43
47-2061	Construction Laborers	\$20.10
47-2071	Paving, Surfacing, and Tamping Equipment Operators	\$23.13
47-2073	Operating Engineers and Other Construction Equipment Operators	\$25.77
47-2081	Drywall and Ceiling Tile Installers	\$24.01
47-2082	Tapers	\$22.73
47-2111	Electricians	\$27.60
47-2121	Glaziers	\$22.65
47-2131	Insulation Workers, Floor, Ceiling, and Wall	\$23.43
47-2132	Insulation Workers, Mechanical	\$24.44
47-2141	Painters, Construction and Maintenance	\$21.72
47-2151	Pipelayers	\$21.62
47-2152	Plumbers, Pipefitters, and Steamfitters	\$29.09
47-2161	Plasterers and Stucco Masons	\$22.83
47-2171	Reinforcing Iron and Rebar Workers	\$22.53
47-2181	Roofers	\$23.13
47-2211	Sheet Metal Workers	\$27.54
47-2221	Structural Iron and Steel Workers	\$25.58
47-3011	Helpers - Brick, Block, & Stone Masons, and Tile And Marble Setters	\$19.18
47-3012	Helpers - Carpenters	\$18.36
47-3013	Helpers - Electricians	\$21.81
47-3014	Helpers - Painters, Paper Hangers, Plasterers, and Stucco Masons	\$17.35
47-3015	Helpers - Pipelayers, Plumbers, Pipefitters, and Steamfitters	\$19.26
47-3016	Helpers - Roofers	\$16.97
47-3019	Helpers, Construction Trades, All Other	\$19.97
47-4011	Construction and Building Inspectors	\$31.98
47-4021	Elevator Installers and Repairers	\$42.75
47-4099	Construction and Related Workers, All Other	\$24.58
47-5022	Excavating and Loading Machine and Dragline Operators, Surface Mining	\$26.52
47-5023	Earth Drillers, Except Oil and Gas	\$29.36
47-5032	Explosives Workers, Ordnance Handling Experts, and Blasters	\$34.04

Standard Occupation Classification Code	Classification	2026 Wage Rate (Adjusted by ECI)
49-2022	Telecommunications Equipment Installers and Repairers (except Line Installers)	\$29.56
49-2098	Security and Fire Alarm Systems Installers	\$25.97
49-9021	Heating, Air Conditioning, and Refrigeration Mechanics and Installers	\$28.80
49-9052	Telecommunications Line Installers and Repairers	\$32.29
51-2041	Structural Metal Fabricators and Fitters	\$25.71
51-4121	Welders, Cutters, Soldering, and Braziers	\$25.41
53-3032	Heavy and Tractor - Trailer Truck Drivers	\$26.34
53-3033	Light Truck or Delivery Services Drivers	\$22.16
53-7021	Crane and Tower Operators	\$32.44
53-7051	Industrial Truck and Tractor Operators	\$21.77

The Federal Government requires the payment of Prevailing Wages for all Construction Contracts that have federal funding that exceeds \$2,000, which includes federal, state and local public works projects. Texas adopted a prevailing wage statute in 1933 that was titled Vernon's Civil Statutes 5159a and then amended and re-codified in 1995 to Texas Government Code Chapter 2258. Effective September 1, 2007, all political subdivisions in the State of Texas may adopt either the Federal Davis/Bacon Wage Determinations or adopt their own wage determinations. North East ISD per Board Policy CV-Facilities Construction adopts the attached Prevailing Construction Wage Rates.



APPENDIX B

NORTH EAST INDEPENDENT SCHOOL DISTRICT  
COMPARISON OF 2025 & 2026 PREVAILING WAGE RATE



Standard Occupation Classification Code	Classification	2025 Wage Rate	2026 Wage Rate	Amount Change	% Change
37-3011	Landscaping and Groundskeeping Workers	\$17.21	\$17.98	\$0.77	4.5%
47-2021	Brick Masons and Block Masons	\$24.74	\$25.55	\$0.81	3.3%
47-2022	Stone Masons	\$18.94	\$23.00	\$4.05	21.4%
47-2031	Carpenters	\$22.95	\$23.84	\$0.89	3.9%
47-2041	Carpet Installers	\$20.89	\$25.95	\$5.06	24.2%
47-2042	Floor Layers, Except Carpet, Wood, and Hard Tiles	\$20.38	\$20.65	\$0.27	1.3%
47-2043	Floor Sanders and Finishers	\$24.19	\$23.09	-\$1.10	-4.5%
47-2044	Tile and Marble Setters	\$20.53	\$21.56	\$1.03	5.0%
47-2051	Cement Masons and Concrete Finishers	\$22.50	\$23.66	\$1.15	5.1%
47-2053	Terrazzo Workers and Finishers	\$23.59	\$24.43	\$0.84	3.6%
47-2061	Construction Laborers	\$19.46	\$20.10	\$0.64	3.3%
47-2071	Paving, Surfacing, and Tamping Equipment Operators	\$23.07	\$23.13	\$0.06	0.2%
47-2073	Operating Engineers and Other Construction Equipment Operators	\$24.65	\$25.77	\$1.11	4.5%
47-2081	Drywall and Ceiling Tile Installers	\$22.93	\$24.01	\$1.08	4.7%
47-2082	Tapers	\$24.35	\$22.73	-\$1.62	-6.7%
47-2111	Electricians	\$27.23	\$27.60	\$0.37	1.4%
47-2121	Glaziers	\$22.16	\$22.65	\$0.49	2.2%
47-2131	Insulation Workers, Floor, Ceiling, and Wall	\$23.53	\$23.43	-\$0.10	-0.4%
47-2132	Insulation Workers, Mechanical	\$25.23	\$24.44	-\$0.79	-3.1%
47-2141	Painters, Construction and Maintenance	\$21.57	\$21.72	\$0.15	0.7%
47-2151	Pipelayers	\$21.11	\$21.62	\$0.51	2.4%
47-2152	Plumbers, Pipefitters, and Steamfitters	\$26.60	\$29.09	\$2.48	9.3%
47-2161	Plasterers and Stucco Masons	\$23.77	\$22.83	-\$0.94	-4.0%
47-2171	Reinforcing Iron and Rebar Workers	\$23.75	\$22.53	-\$1.22	-5.1%
47-2181	Roofers	\$21.60	\$23.13	\$1.53	7.1%
47-2211	Sheet Metal Workers	\$27.05	\$27.54	\$0.49	1.8%
47-2221	Structural Iron and Steel Workers	\$25.10	\$25.58	\$0.48	1.9%
47-3011	Helpers - Brick, Block, & Stone Masons, and Tile And Marble Setters	\$19.24	\$19.18	-\$0.06	-0.3%
47-3012	Helpers - Carpenters	\$19.17	\$18.36	-\$0.81	-4.2%
47-3013	Helpers - Electricians	\$20.95	\$21.81	\$0.86	4.1%
47-3014	Helpers - Painters, Paper Hangers, Plasterers, and Stucco Masons	\$17.39	\$17.35	-\$0.04	-0.2%
47-3015	Helpers - Pipelayers, Plumbers, Pipefitters, and Steamfitters	\$18.37	\$19.26	\$0.89	4.8%
47-3016	Helpers - Roofers	\$18.19	\$16.97	-\$1.22	-6.7%
47-3019	Helpers, Construction Trades, All Other	\$19.14	\$19.97	\$0.83	4.3%
47-4011	Construction and Building Inspectors	\$30.86	\$31.98	\$1.12	3.6%
47-4021	Elevator Installers and Repairers	\$40.64	\$42.75	\$2.11	5.2%
47-4099	Construction and Related Workers, All Other	\$24.55	\$24.58	\$0.03	0.1%
47-5022	Excavating and Loading Machine and Dragline Operators, Surface Mining	\$24.70	\$26.52	\$1.82	7.4%
47-5023	Earth Drillers, Except Oil and Gas	\$27.86	\$29.36	\$1.50	5.4%
47-5032	Explosives Workers, Ordnance Handling Experts, and Blasters	\$30.05	\$34.04	\$3.99	13.3%
49-2022	Telecommunications Equipment Installers and Repairers (except Line Installers)	\$29.22	\$29.56	\$0.34	1.2%
49-2098	Security and Fire Alarm Systems Installers	\$26.06	\$25.97	-\$0.09	-0.3%

Standard Occupation Classification Code	Classification	2025 Wage Rate	2026 Wage Rate	Amount Change	% Change
49-9021	Heating, Air Conditioning, and Refrigeration Mechanics and Installers	\$26.00	\$28.80	\$2.80	10.7%
49-9052	Telecommunications Line Installers and Repairers	\$31.96	\$32.29	\$0.33	1.0%
51-2041	Structural Metal Fabricators and Fitters	\$22.92	\$25.71	\$2.79	12.2%
51-4121	Welders, Cutters, Soldering, and Braziers	\$25.25	\$25.41	\$0.15	0.6%
53-3032	Heavy and Tractor - Trailer Truck Drivers	\$25.42	\$26.34	\$0.92	3.6%
53-3033	Light Truck or Delivery Services Drivers	\$21.61	\$22.16	\$0.55	2.5%
53-7021	Crane and Tower Operators	\$31.34	\$32.44	\$1.10	3.5%
53-7051	Industrial Truck and Tractor Operators	\$20.74	\$21.77	\$1.03	4.9%

The Federal Government requires the payment of Prevailing Wages for all Construction Contracts that have federal funding that exceeds \$2,000, which includes federal, state and local public works projects. Texas adopted a prevailing wage statute in 1933 that was titled Vernon's Civil Statutes 5159a and then amended and re-codified in 1995 to Texas Government Code Chapter 2258. Effective September 1, 2007, all political subdivisions in the State of Texas may adopt either the Federal Davis/Bacon Wage Determinations or adopt their own wage determinations. North East ISD per Board Policy CV-Facilities Construction adopts the attached Prevailing Construction Wage Rates.





**NORTH EAST INDEPENDENT SCHOOL DISTRICT  
DESCRIPTION OF CLASSIFICATIONS**



Standard Occupation Classification Code	Classification
<a href="#">37-3011</a> -	<b>Landscaping and Groundskeeping Workers</b> Landscape or maintain grounds of property using hand or power tools or equipment. Workers typically perform a variety of tasks, which may include any combination of the following: sod laying, mowing, trimming, planting, watering, fertilizing, digging, raking, sprinkler installation, and installation of mortarless segmental concrete masonry wall units. Excludes "Farmworkers and Laborers, Crop, Nursery, and Greenhouse" (45-2092).
<a href="#">47-2021</a> -	<b>Brick masons and Block Masons</b> Lay and bind building materials, such as brick, structural tile, concrete block, cinder block, glass block, and terra-cotta block, with mortar and other substances to construct or repair walls, partitions, arches, sewers, and other structures. Installers of mortarless segmental concrete masonry wall units are classified in "Landscaping and Groundskeeping Workers" (37-3011). Excludes "Stonemasons" (47-2022).
<a href="#">47-2022</a> -	<b>Stone Masons</b> Build stone structures, such as piers, walls, and abutments. Lay walks, curbstones, or special types of masonry for vats, tanks, and floors.
<a href="#">47-2031</a>	<b>Carpenters</b> Construct, erect, install, or repair structures and fixtures made of wood, such as concrete forms; building frameworks, including partitions, joists, studding, and rafters; wood stairways, window and door frames, and hardwood floors. May also install cabinets, siding, drywall and batt or roll insulation. Include brattice builders who build doors or brattices (ventilation walls or partitions) in underground passageways.
<a href="#">47-2041</a>	<b>Carpet Installers</b> Lay and install carpet from rolls or blocks on floors. Install padding and trim flooring materials. Excludes "Floor Layers, Except Carpet, Wood, and Hard Tiles" (47-2042).
<a href="#">47-2042</a>	<b>Floor Layers, Except Carpet, Wood, and Hard Tiles</b> Apply blocks, strips, or sheets of shock-absorbing, sound-deadening, or decorative coverings to floors.
<a href="#">47-2043</a>	<b>Floor Sanders and Finishers</b> Scrape and sand wooden floors to smooth surfaces using floor scraper and floor sanding machine, and apply coats of finish.
<a href="#">47-2044</a>	<b>Tile and Stone Setters</b> Apply hard tile, marble, and wood tile to walls, floors, ceilings, and roof decks.
<a href="#">47-2051</a>	<b>Cement Masons and Concrete Finishers</b> Smooth and finish surfaces of poured concrete, such as floors, walks, sidewalks, roads, or curbs using a variety of hand and power tools. Align forms for sidewalks, curbs, or gutters; patch voids; use saws to cut expansion joints. Classify installers of mortarless segmental concrete masonry wall units in "Landscaping and Groundskeeping Workers. (37-3011).
<a href="#">47-2053</a>	<b>Terrazzo Workers and Finishers</b> Apply a mixture of cement, sand, pigment, or marble chips to floors, stairways, and cabinet fixtures to fashion durable and decorative surfaces.
<a href="#">47-2061</a>	<b>Construction Laborers</b> Perform tasks involving physical labor at construction sites. May operate hand and power tools of all types: air hammers, earth tampers, cement mixers, small mechanical hoists, surveying and measuring equipment, and a variety of other equipment and instruments. May clean and prepare sites, dig trenches, set braces to support the sides of excavations, erect scaffolding, and clean up rubble, debris, and other waste materials. May assist other craft workers. Construction laborers who primarily assist a particular craft worker are classified under "Helpers, Construction Trades" (47-3010). Excludes "Hazardous Materials Removal Workers" (47-4041).
<a href="#">47-2071</a>	<b>Paving, Surfacing, and Tamping Equipment Operators</b> Operate equipment used for applying concrete, asphalt, or other materials to road beds, parking lots, or airport runways and taxiways, or equipment used for tamping gravel, dirt, or other materials. Include concrete and asphalt paving machine operators, form tampers, tamping machine operators, and stone spreader operators.
<a href="#">47-2073</a>	<b>Operating Engineers and Other Construction Equipment Operators</b> Operate one or several types of power construction equipment, such as motor graders, bulldozers, scrapers, compressors, pumps, derricks, shovels, tractors, or front-end loaders to excavate, move, and grade earth, erect structures, or pour concrete or other hard surface pavement. May repair and maintain equipment in addition to other duties. Excludes "Extraction Workers" (47-5000) and "Crane and Tower Operators" (53-7021).
<a href="#">47-2081</a>	<b>Drywall and Ceiling Tile Installers</b>

Standard Occupation Classification Code	Classification
	Apply plasterboard or other wallboard to ceilings or interior walls of buildings. Apply or mount acoustical tiles or blocks, strips, or sheets of shock-absorbing materials to ceilings and walls of buildings to reduce or reflect sound. Materials may be of decorative quality. Include lathers who fasten wooden, metal, or rock board lath to walls, ceilings or partitions of buildings to provide support base for plaster, fire-proofing, or acoustical material. Exclude "Carpenters" (47-2031), and "Tile and Marble Setters" (47-2044).
<a href="#">47-2082</a>	<b>Tapers</b> Seal joints between plasterboard or other wallboard to prepare wall surface for painting or papering.
<a href="#">47-2111</a>	<b>Electricians</b> Install, maintain, and repair electrical wiring, equipment, and fixtures. Ensure that work is in accordance with relevant codes. May install or service street lights, intercom systems, or electrical control systems. Exclude "Security and Fire Alarm Systems Installers" (49-2098).
<a href="#">47-2121</a>	<b>Glaziers</b> Install glass in windows, skylights, store fronts, and display cases, or on surfaces, such as building fronts, interior walls, ceilings, and tabletops.
<a href="#">47-2131</a>	<b>Insulation Workers, Floor, Ceiling, and Wall</b> Line and cover structures with insulating materials. May work with batt, roll, or blown insulation materials.
<a href="#">47-2132</a>	<b>Insulation Workers, Mechanical</b> Apply insulating materials to pipes or ductwork, or other mechanical systems in order to help control and maintain temperature.
<a href="#">47-2141</a>	<b>Painters, Construction and Maintenance</b> Paint walls, equipment, buildings, bridges, and other structural surfaces, using brushes, rollers, and spray guns. May remove old paint to prepare surface prior to painting. May mix colors or oils to obtain desired color or consistency. Exclude "Paperhangers" (47-2142).
<a href="#">47-2151</a>	<b>Pipelayers</b> Lay pipe for storm or sanitation sewers, drains, and water mains. Perform any combination of the following tasks: grade trenches or culverts, position pipe, or seal joints. Exclude "Welders, Cutters, Solderers, and Braziers" (51-4121).
<a href="#">47-2152</a>	<b>Plumbers, Pipefitters, and Steamfitters</b> Assemble, install, alter, and repair pipelines or pipe systems that carry water, steam, air, or other liquids or gases. May install heating and cooling equipment and mechanical control systems. Includes sprinkler fitters.
<a href="#">47-2161</a>	<b>Plasterers and Stucco Masons</b> Apply interior or exterior plaster, cement, stucco, or similar materials. May also set ornamental plaster.
<a href="#">47-2171</a>	<b>Reinforcing Iron and Rebar Workers</b> Position and secure steel bars or mesh in concrete forms in order to reinforce concrete. Use a variety of fasteners, rod-bending machines, blowtorches, and hand tools. Include rod busters.
<a href="#">47-2181</a>	<b>Roofers</b> Cover roofs of structures with shingles, slate, asphalt, aluminum, wood, and related materials. May spray roofs, sidings, and walls with material to bind, seal, insulate, or soundproof sections of structures.
<a href="#">47-2211</a>	<b>Sheet Metal Workers</b> Fabricate, assemble, install, and repair sheet metal products and equipment, such as ducts, control boxes, drainpipes, and furnace casings. Work may involve any of the following: setting up and operating fabricating machines to cut, bend, and straighten sheet metal; shaping metal over anvils, blocks, or forms using hammer; operating soldering and welding equipment to join sheet metal parts; inspecting, assembling, and smoothing seams and joints of burred surfaces. Include sheet metal duct installers who install prefabricated sheet metal ducts used for heating, air conditioning, or other purposes.
<a href="#">47-2221</a>	<b>Structural Iron and Steel Workers</b> Raise, place, and unite iron or steel girders, columns, and other structural members to form completed structures or structural frameworks. May erect metal storage tanks and assemble prefabricated metal buildings. Exclude "Reinforcing Iron and Rebar Workers" (47-2171).
<a href="#">47-3011</a>	<b>Helpers--Brick masons, Block masons, Stonemasons, and Tile and Marble Setters</b> Help brick masons, block masons, stonemasons, or tile and marble setters by performing duties requiring less skill. Duties include using, supplying, or holding materials or tools, and cleaning work area and equipment. Construction laborers who do not primarily assist brick masons, block masons, and stonemasons or tile and marble setters are classified under "Construction Laborers" (47-2061). Apprentice workers are classified with the appropriate skilled construction trade occupation (47-2011 through 47-2231).
<a href="#">47-3012</a>	<b>Helpers--Carpenters</b> Help carpenters by performing duties requiring less skill. Duties include using, supplying, or holding materials or tools, and cleaning work area and equipment. Construction laborers who do not primarily assist carpenters are classified under "Construction Laborers" (47-2061). Apprentice workers are classified with the appropriate skilled construction trade occupation (47-2011 through 47-2231).
<a href="#">47-3013</a>	<b>Helpers--Electricians</b>

Standard Occupation Classification Code	Classification
	Help electricians by performing duties requiring less skill. Duties include using, supplying, or holding materials or tools, and cleaning work area and equipment. Construction laborers who do not primarily assist electricians are classified under "Construction Laborers" (47-2061). Apprentice workers are classified with the appropriate skilled construction trade occupation (47-2011 through 47-2231).
<a href="#">47-3014</a>	<b>Helpers--Painters, Paperhangers, Plasterers, and Stucco Masons</b> Help painters, paperhangers, plasterers, or stucco masons by performing duties of lesser skill. Duties include using, supplying or holding materials or tools, and cleaning work area and equipment. Construction laborers who do not primarily assist painters, paperhangers, plasterers, or stucco masons are classified under "Construction Laborers" (47-2061). Apprentice workers are classified with the appropriate skilled construction trade occupation (47-2011 through 47-2231).
<a href="#">47-3015</a>	<b>Helpers--Pipefitters, Plumbers, Pipefitters, and Steamfitters</b> Help plumbers, pipefitters, steamfitters, or pipelayers by performing duties requiring less skill. Duties include using, supplying, or holding materials or tools, and cleaning work area and equipment. Construction laborers who do not primarily assist plumbers, pipefitters, steamfitters, or pipelayers are classified under "Construction Laborers" (47-2061). Apprentice workers are classified with the appropriate skilled construction trade occupation (47-2011 through 47-2231).
<a href="#">47-3016</a>	<b>Helpers--Roofers</b> Help roofers by performing duties requiring less skill. Duties include using, supplying, or holding materials or tools, and cleaning work area and equipment. Construction laborers who do not primarily assist roofers are classified under "Construction Laborers" (47-2061). Apprentice workers are classified with the appropriate skilled construction trade occupation (47-2011 through 47-2231).
<a href="#">47-3019</a>	<b>Helpers, Construction Trades, All Other</b> All construction trades helpers not listed separately.
<a href="#">47-4011</a>	<b>Construction and Building Inspectors</b> Inspect structures using engineering skills to determine structural soundness and compliance with specifications, building codes, and other regulations. Inspections may be general in nature or may be limited to a specific area, such as electrical systems or plumbing.
<a href="#">47-4021</a>	<b>Elevator and Escalator Installers and Repairers</b> Assemble, install, repair, or maintain electric or hydraulic freight or passenger elevators, escalators, or dumbwaiters.
<a href="#">47-4090</a>	<b>Miscellaneous Construction and Related Workers</b> This occupation includes the 2018 SOC occupations 47-4091 Segmental Pavers and 47-4099 Construction and Related Workers, All Other.
<a href="#">47-5022</a>	<b>Excavating and Loading Machine and Dragline Operators, Surface Mining</b> Operate or tend machinery at surface mining site, equipped with scoops, shovels, or buckets to excavate and load loose materials.
<a href="#">47-5023</a>	<b>Earth Drillers, Except Oil and Gas</b> Operate a variety of drills such as rotary, churn, and pneumatic to tap subsurface water and salt deposits, to remove core samples during mineral exploration or soil testing, and to facilitate the use of explosives in mining or construction. Includes horizontal and earth boring machine operators.
<a href="#">47-5032</a>	<b>Explosives Workers, Ordnance Handling Experts, and Blasters</b> Place and detonate explosives to demolish structures or to loosen, remove, or displace earth, rock, or other materials. May perform specialized handling, storage, and accounting procedures.
<a href="#">49-2022</a>	<b>Telecommunications Equipment Installers and Repairers, Except Line Installers</b> Install, set up, rearrange, or remove switching, distribution, routing, and dialing equipment used in central offices or headends. Service or repair telephone, cable television, Internet, and other communications equipment on customers' property. May install communications equipment or communications wiring in buildings. Excludes "Telecommunications Line Installers and Repairers" (49-9052).
<a href="#">49-2098</a>	<b>Security and Fire Alarm Systems Installers</b> Install, program, maintain, and repair security and fire alarm wiring and equipment. Ensure that work is in accordance with relevant codes. Exclude "Electricians" (47-2111) who do a broad range of electrical wiring.
<a href="#">49-9021</a>	<b>Heating, Air Conditioning, and Refrigeration Mechanics and Installers</b> Install or repair heating, central air conditioning, or refrigeration systems, including oil burners, hot-air furnaces, and heating stoves.
<a href="#">49-9052</a>	<b>Telecommunications Line Installers and Repairers</b> Install and repair telecommunications cable, including fiber optics.
<a href="#">51-2041</a>	<b>Structural Metal Fabricators and Fitters</b> Fabricate, position, align, and fit parts of structural metal products. Shipfitters are included in "Layout Workers, Metal and Plastic" (51-4192).
<a href="#">51-4121</a>	<b>Welders, Cutters, Solderers, and Braziers</b>

Standard Occupation Classification Code	Classification
	Use hand-welding, flame-cutting, hand soldering, or brazing equipment to weld or join metal components or to fill holes, indentations, or seams of fabricated metal products.
<a href="#">53-3032</a>	<b>Heavy and Tractor-Trailer Truck Drivers</b>
	Drive a tractor-trailer combination or a truck with a capacity of at least 26,001 pounds Gross Vehicle Weight (GVW). May be required to unload truck. Requires commercial drivers' license. Includes tow truck drivers. Excludes "Refuse and Recyclable Material Collectors" (53-7081).
<a href="#">53-3033</a>	<b>Light Truck Drivers</b>
	Drive a light vehicle, such as a truck or van, with a capacity of less than 26,000 pounds Gross Vehicle Weight (GVW), primarily to deliver or pick up merchandise or to deliver packages. May load and unload vehicle. Excludes "Couriers and Messengers" (43-5021) and "Driver/Sales Workers" (53-3031).
<a href="#">53-7021</a>	<b>Crane and Tower Operators</b>
	Operate mechanical boom and cable or tower and cable equipment to lift and move materials, machines, or products in many directions.
<a href="#">53-7051</a>	<b>Industrial Truck and Tractor Operators</b>
	Operate industrial trucks or tractors equipped to move materials around a warehouse, storage yard, factory, construction site, or similar location. Exclude "Logging Equipment Operators" (45-4022).