

Public Property, Safety, and Works Committee
Monday, July 11, 2022 4:00 PM
Council Chambers
2500 14 Street
Columbus, NE 68601

The Mayor and City Council reserve the right to go into closed session as per Section 84-1410 of the Nebraska Revised Statutes. A current agenda is on file at the office of the city clerk at City Hall, 2424 14 Street, Columbus, Nebraska. For more information, call 402-562-4224 or visit our website at www.columbusne.us.

- 1. Statement of compliance with Open Meetings Act and roll call.**

Open Meetings Act

Neb. Rev. Stat. § 84-1407. Act, how cited.

Sections 84-1407 to 84-1414 shall be known and may be cited as the Open Meetings Act.

Neb. Rev. Stat. § 84-1408. Declaration of intent; meetings open to public.

It is hereby declared to be the policy of this state that the formation of public policy is public business and may not be conducted in secret.

Every meeting of a public body shall be open to the public in order that citizens may exercise their democratic privilege of attending and speaking at meetings of public bodies, except as otherwise provided by the Constitution of Nebraska, federal statutes, and the Open Meetings Act.

Neb. Rev. Stat. § 84-1409. Terms, defined.

For purposes of the Open Meetings Act, unless the context otherwise requires:

(1)(a) Public body means (i) governing bodies of all political subdivisions of the State of Nebraska, (ii) governing bodies of all agencies, created by the Constitution of Nebraska, statute, or otherwise pursuant to law, of the executive department of the State of Nebraska, (iii) all independent boards, commissions, bureaus, committees, councils, subunits, or any other bodies created by the Constitution of Nebraska, statute, or otherwise pursuant to law, (iv) all study or advisory committees of the executive department of the State of Nebraska whether having continuing existence or appointed as special committees with limited existence, (v) advisory committees of the bodies referred to in subdivisions (i), (ii), and (iii) of this subdivision, and (vi) instrumentalities exercising essentially public functions; and

(b) Public body does not include (i) subcommittees of such bodies unless a quorum of the public body attends a subcommittee meeting or unless such subcommittees are holding hearings, making policy, or taking formal action on behalf of their parent body, except that all meetings of any subcommittee established under section 81-15,175 are subject to the Open Meetings Act, and (ii) entities conducting judicial proceedings unless a court or other judicial body is exercising rulemaking authority, deliberating, or deciding upon the issuance of administrative orders;

(2) Meeting means all regular, special, or called meetings, formal or informal, of any public body for the purposes of briefing, discussion of public business, formation of tentative policy, or the taking of any action of the public body; and

(3) Virtual conferencing means conducting or participating in a meeting electronically or telephonically with interaction among the participants subject to subsection (2) of section 84-1412.

Neb. Rev. Stat. § 84-1410. Closed session; when; purpose; reasons listed; procedure; right to challenge; prohibited acts; chance meetings, conventions, or workshops.

(1) Any public body may hold a closed session by the affirmative vote of a majority of its voting members if a closed session is clearly necessary for the protection of the public interest or for the prevention of needless injury to the reputation of an individual and if such

individual has not requested a public meeting. The subject matter and the reason necessitating the closed session shall be identified in the motion to close. Closed sessions may be held for, but shall not be limited to, such reasons as:

- (a) Strategy sessions with respect to collective bargaining, real estate purchases, pending litigation, or litigation which is imminent as evidenced by communication of a claim or threat of litigation to or by the public body;
- (b) Discussion regarding deployment of security personnel or devices;
- (c) Investigative proceedings regarding allegations of criminal misconduct;
- (d) Evaluation of the job performance of a person when necessary to prevent needless injury to the reputation of a person and if such person has not requested a public meeting;
- (e) For the Community Trust created under section 81-1801.02, discussion regarding the amounts to be paid to individuals who have suffered from a tragedy of violence or natural disaster; or
- (f) For public hospitals, governing board peer review activities, professional review activities, review and discussion of medical staff investigations or disciplinary actions, and any strategy session concerning transactional negotiations with any referral source that is required by federal law to be conducted at arms length.

Nothing in this section shall permit a closed meeting for discussion of the appointment or election of a new member to any public body.

(2) The vote to hold a closed session shall be taken in open session. The entire motion, the vote of each member on the question of holding a closed session, and the time when the closed session commenced and concluded shall be recorded in the minutes. If the motion to close passes, then the presiding officer immediately prior to the closed session shall restate on the record the limitation of the subject matter of the closed session. The public body holding such a closed session shall restrict its consideration of matters during the closed portions to only those purposes set forth in the motion to close as the reason for the closed session. The meeting shall be reconvened in open session before any formal action may be taken. For purposes of this section, formal action shall mean a collective decision or a collective commitment or promise to make a decision on any question, motion, proposal, resolution, order, or ordinance or formation of a position or policy but shall not include negotiating guidance given by members of the public body to legal counsel or other negotiators in closed sessions authorized under subdivision (1)(a) of this section.

(3) Any member of any public body shall have the right to challenge the continuation of a closed session if the member determines that the session has exceeded the reason stated in the original motion to hold a closed session or if the member contends that the closed session is neither clearly necessary for (a) the protection of the public interest or (b) the prevention of needless injury to the reputation of an individual. Such challenge shall be overruled only by a majority vote of the

members of the public body. Such challenge and its disposition shall be recorded in the minutes.

(4) Nothing in this section shall be construed to require that any meeting be closed to the public. No person or public body shall fail to invite a portion of its members to a meeting, and no public body shall designate itself a subcommittee of the whole body for the purpose of circumventing the Open Meetings Act. No closed session, informal meeting, chance meeting, social gathering, email, fax, or other electronic communication shall be used for the purpose of circumventing the requirements of the act.

(5) The act does not apply to chance meetings or to attendance at or travel to conventions or workshops of members of a public body at which there is no meeting of the body then intentionally convened, if there is no vote or other action taken regarding any matter over which the public body has supervision, control, jurisdiction, or advisory power.

Neb. Rev. Stat. § 84-1411. Meetings of public body; notice; method; contents; when available; right to modify; duties concerning notice; virtual meetings authorized; emergency meeting without notice; appearance before public body.

(1)(a) Each public body shall give reasonable advance publicized notice of the time and place of each meeting as provided in this subsection. Such notice shall be transmitted to all members of the public body and to the public.

(b)(i) Except as provided in subdivision (1)(b)(ii) of this section, in the case of a public body described in subdivision (1)(a)(i) of section 84-1409 or such body's advisory committee, such notice shall be published in a newspaper of general circulation within the public body's jurisdiction and, if available, on such newspaper's web site.

(ii) In the case of the governing body of a city of the second class or village or such body's advisory committee, such notice shall be published by:

(A) Publication in a newspaper of general circulation within the public body's jurisdiction and, if available, on such newspaper's web site; or

(B) Posting written notice in three conspicuous public places in such city or village. Such notice shall be posted in the same three places for each meeting.

(iii) In the case of a public body not described in subdivision (1)(b)(i) or (ii) of this section, such notice shall be given by a method designated by the public body.

(c) In addition to a method of notice required by subdivision (1)(b)(i) or (ii) of this section, such notice may also be provided by any other appropriate method designated by such public body or such advisory committee.

(d) Each public body shall record the methods and dates of such notice in its minutes.

(e) Such notice shall contain an agenda of subjects known at the time of the publicized notice or a statement that the agenda, which shall be kept continually current, shall be readily available for public inspection at the principal office of the public body during normal business hours. Agenda items shall be sufficiently descriptive to give the public reasonable notice of the matters to be considered at the

meeting. Except for items of an emergency nature, the agenda shall not be altered later than (i) twenty-four hours before the scheduled commencement of the meeting or (ii) forty-eight hours before the scheduled commencement of a meeting of a city council or village board scheduled outside the corporate limits of the municipality. The public body shall have the right to modify the agenda to include items of an emergency nature only at such public meeting.

(2)(a) The following entities may hold a meeting by means of virtual conferencing if the requirements of subdivision (2)(b) of this section are met:

(i) A state agency, state board, state commission, state council, or state committee, or an advisory committee of any such state entity;

(ii) An organization, including the governing body, created under the Interlocal Cooperation Act, the Joint Public Agency Act, or the Municipal Cooperative Financing Act;

(iii) The governing body of a public power district having a chartered territory of more than one county in this state;

(iv) The governing body of a public power and irrigation district having a chartered territory of more than one county in this state;

(v) An educational service unit;

(vi) The Educational Service Unit Coordinating Council;

(vii) An organization, including the governing body, of a risk management pool or its advisory committees organized in accordance with the Intergovernmental Risk Management Act;

(viii) A community college board of governors;

(ix) The Nebraska Brand Committee;

(x) A local public health department;

(xi) A metropolitan utilities district;

(xii) A regional metropolitan transit authority;

(xiii) A natural resources district; and

(xiv) The Judicial Resources Commission.

(b) The requirements for holding a meeting by means of virtual conferencing are as follows:

(i) Reasonable advance publicized notice is given as provided in subsection (1) of this section, including providing access to a dial-in number or link to the virtual conference;

(ii) In addition to the public's right to participate by virtual conferencing, reasonable arrangements are made to accommodate the public's right to attend at a physical site and participate as provided in section 84-1412, including reasonable seating, in at least one designated site in a building open to the public and identified in the notice, with: At least one member of the entity holding such meeting, or his or her designee, present at each site; a recording of the hearing by audio or visual recording devices; and a reasonable opportunity for input, such as public comment or questions, is provided to at least the same extent as

would be provided if virtual conferencing was not used;

(iii) At least one copy of all documents being considered at the meeting is available at any physical site open to the public where individuals may attend the virtual conference. The public body shall also provide links to an electronic copy of the agenda, all documents being considered at the meeting, and the current version of the Open Meetings Act; and

(iv) Except as otherwise provided in this subdivision or subsection (4) of section 79-2204, no more than one-half of the meetings of the state entities, advisory committees, boards, councils, organizations, or governing bodies are held by virtual conferencing in a calendar year. In the case of an organization created under the Interlocal Cooperation Act that sells electricity or natural gas at wholesale on a multistate basis or an organization created under the Municipal Cooperative Financing Act, the organization may hold more than one-half of its meetings by virtual conferencing if such organization holds at least one meeting each calendar year that is not by virtual conferencing. The governing body of a risk management pool that meets at least quarterly and the advisory committees of the governing body may each hold more than one-half of its meetings by virtual conferencing if the governing body's quarterly meetings are not held by virtual conferencing.

(3) Virtual conferencing, emails, faxes, or other electronic communication shall not be used to circumvent any of the public government purposes established in the Open Meetings Act.

(4) The secretary or other designee of each public body shall maintain a list of the news media requesting notification of meetings and shall make reasonable efforts to provide advance notification to them of the time and place of each meeting and the subjects to be discussed at that meeting.

(5) When it is necessary to hold an emergency meeting without reasonable advance public notice, the nature of the emergency shall be stated in the minutes and any formal action taken in such meeting shall pertain only to the emergency. Such emergency meetings may be held by virtual conferencing. The provisions of subsection (4) of this section shall be complied with in conducting emergency meetings. Complete minutes of such emergency meetings specifying the nature of the emergency and any formal action taken at the meeting shall be made available to the public by no later than the end of the next regular business day.

(6) A public body may allow a member of the public or any other witness to appear before the public body by means of virtual conferencing.

(7)(a) Notwithstanding subsections (2) and (5) of this section, if an emergency is declared by the Governor pursuant to the Emergency Management Act as defined in section 81-829.39, a public body the territorial jurisdiction of which is included in the emergency declaration, in whole or in part, may hold a meeting by virtual conferencing during such emergency if the public body gives reasonable advance publicized notice as described in subsection (1) of this section. The notice shall include information regarding access for the public and news media. In addition to any formal action taken pertaining to the emergency, the public body may hold such meeting for the purpose of briefing, discussion of public business, formation of tentative policy, or the taking of any action by the public body.

(b) The public body shall provide access by providing a dial-in
Open Meetings Act

number or a link to the virtual conference. The public body shall also provide links to an electronic copy of the agenda, all documents being considered at the meeting, and the current version of the Open Meetings Act. Reasonable arrangements shall be made to accommodate the public's right to hear and speak at the meeting and record the meeting. Subsection (4) of this section shall be complied with in conducting such meetings.

(c) The nature of the emergency shall be stated in the minutes. Complete minutes of such meeting specifying the nature of the emergency and any formal action taken at the meeting shall be made available for inspection as provided in subsections (5) and (6) of section 84-1413.

Neb. Rev. Stat. § 84-1412. Meetings of public body; rights of public; public body; powers and duties.

(1) Subject to the Open Meetings Act, the public has the right to attend and the right to speak at meetings of public bodies, and all or any part of a meeting of a public body, except for closed sessions called pursuant to section 84-1410, may be videotaped, televised, photographed, broadcast, or recorded by any person in attendance by means of a tape recorder, a camera, video equipment, or any other means of pictorial or sonic reproduction or in writing.

(2) It shall not be a violation of subsection (1) of this section for any public body to make and enforce reasonable rules and regulations regarding the conduct of persons attending, speaking at, videotaping, televising, photographing, broadcasting, or recording its meetings, including meetings held by virtual conferencing. A body may not be required to allow citizens to speak at each meeting, but it may not forbid public participation at all meetings.

(3) No public body shall require members of the public to identify themselves as a condition for admission to the meeting nor shall such body require that the name of any member of the public be placed on the agenda prior to such meeting in order to speak about items on the agenda. The body shall require any member of the public desiring to address the body to identify himself or herself, including an address and the name of any organization represented by such person unless the address requirement is waived to protect the security of the individual.

(4) No public body shall, for the purpose of circumventing the Open Meetings Act, hold a meeting in a place known by the body to be too small to accommodate the anticipated audience.

(5) No public body shall be deemed in violation of this section if it holds its meeting in its traditional meeting place which is located in this state.

(6) No public body shall be deemed in violation of this section if it holds a meeting outside of this state if, but only if:

(a) A member entity of the public body is located outside of this state and the meeting is in that member's jurisdiction;

(b) All out-of-state locations identified in the notice are located within public buildings used by members of the entity or at a place which will accommodate the anticipated audience;

(c) Reasonable arrangements are made to accommodate the public's right to attend, hear, and speak at the meeting, including making virtual conferencing available at an in-state location to members, the public, or the press, if requested twenty-four hours in advance;

(d) No more than twenty-five percent of the public body's meetings in a calendar year are held out-of-state;

(e) Out-of-state meetings are not used to circumvent any of the public government purposes established in the Open Meetings Act; and

(f) The public body publishes notice of the out-of-state meeting at least twenty-one days before the date of the meeting in a legal newspaper of statewide circulation.

(7) Each public body shall, upon request, make a reasonable effort to accommodate the public's right to hear the discussion and testimony presented at a meeting.

(8) Public bodies shall make available at the meeting or the in-state location for virtual conferencing as required by subdivision (6)(c) of this section, for examination and copying by members of the public, at least one copy of all reproducible written material to be discussed at an open meeting, either in paper or electronic form. Public bodies shall make available at least one current copy of the Open Meetings Act posted in the meeting room at a location accessible to members of the public. At the beginning of the meeting, the public shall be informed about the location of the posted information.

Neb. Rev. Stat. § 84-1413. Meetings; minutes; roll call vote; secret ballot; when.

(1) Each public body shall keep minutes of all meetings showing the time, place, members present and absent, and the substance of all matters discussed.

(2) Any action taken on any question or motion duly moved and seconded shall be by roll call vote of the public body in open session, and the record shall state how each member voted or if the member was absent or not voting. The requirements of a roll call or viva voce vote shall be satisfied by a public body which utilizes an electronic voting device which allows the yeas and nays of each member of such public body to be readily seen by the public.

(3) The vote to elect leadership within a public body may be taken by secret ballot, but the total number of votes for each candidate shall be recorded in the minutes.

(4) The minutes of all meetings and evidence and documentation received or disclosed in open session shall be public records and open to public inspection during normal business hours.

(5) Minutes shall be written, except as provided in subsection (6) of this section, and available for inspection within ten working days or prior to the next convened meeting, whichever occurs earlier, except that cities of the second class and villages may have an additional ten working days if the employee responsible for writing the minutes is absent due to a serious illness or emergency.

(6) Minutes of the meetings of the board of a school district or educational service unit may be kept as an electronic record.

(7) Beginning July 31, 2022, the governing body of a natural resources district, the city council of a city of the metropolitan class, the city council of a city of the primary class, the city council of a city of the first class, the county board of a county with a population greater than twenty-five thousand inhabitants, and the school board of a school district shall make available on such entity's public web site the agenda and minutes of any meeting of the governing body. The agenda shall be placed on the web site at least twenty-four hours before the meeting of

the governing body. Minutes shall be placed on the web site at such time as the minutes are available for inspection as provided in subsection (5) of this section. This information shall be available on the public web site for at least six months.

Neb. Rev. Stat. § 84-1414. Unlawful action by public body; declared void or voidable by district court; when; duty to enforce open meeting laws; citizen's suit; procedure; violations; penalties.

(1) Any motion, resolution, rule, regulation, ordinance, or formal action of a public body made or taken in violation of the Open Meetings Act shall be declared void by the district court if the suit is commenced within one hundred twenty days of the meeting of the public body at which the alleged violation occurred. Any motion, resolution, rule, regulation, ordinance, or formal action of a public body made or taken in substantial violation of the Open Meetings Act shall be voidable by the district court if the suit is commenced more than one hundred twenty days after but within one year of the meeting of the public body in which the alleged violation occurred. A suit to void any final action shall be commenced within one year of the action.

(2) The Attorney General and the county attorney of the county in which the public body ordinarily meets shall enforce the Open Meetings Act.

(3) Any citizen of this state may commence a suit in the district court of the county in which the public body ordinarily meets or in which the plaintiff resides for the purpose of requiring compliance with or preventing violations of the Open Meetings Act, for the purpose of declaring an action of a public body void, or for the purpose of determining the applicability of the act to discussions or decisions of the public body. It shall not be a defense that the citizen attended the meeting and failed to object at such time. The court may order payment of reasonable attorney's fees and court costs to a successful plaintiff in a suit brought under this section.

(4) Any member of a public body who knowingly violates or conspires to violate or who attends or remains at a meeting knowing that the public body is in violation of any provision of the Open Meetings Act shall be guilty of a Class IV misdemeanor for a first offense and a Class III misdemeanor for a second or subsequent offense.

Neb. Rev. Stat. § 84-1415. Open Meetings Act; requirements; waiver; validity of action.

No motion, resolution, rule, regulation, ordinance, or formal action made, adopted, passed, or taken at a meeting as defined in section 84-1409 of a public body as defined in such section shall be invalidated because such motion, resolution, rule, regulation, ordinance, or formal action was made, adopted, passed, or taken at a meeting or meetings on or after March 17, 2020, and on or before April 30, 2021, pursuant to a Governor's Executive Order which waived certain requirements of the Open Meetings Act.

2. Traffic Control Device Committee report for 2nd Quarter 2022.

TRAFFIC CONTROL DEVICE COMMITTEE

Quarterly Report

April – June 2022

April

No meeting held this month

May

NEW BUSINESS

A. Van Berg Drive from 8th Street south for speed control:

Discussion vehicles are speeding south to Van Berg. Chief Sherer will have the traffic trailer set up and collect data, and has tasked Captain Thalken and Patrol Sergeants to put together an enforcement plan.

No action taken.

B. Review of Traffic Device needs within the City:

Nothing to discuss

OLD BUSINESS

A. Intersection of 31st Street and 39th Avenue for traffic control:

Discussion of vehicle speed and traffic. This was also a topic at October 13, 2021 Traffic Control Device Committee meeting. Discussion on past information and current data and observations. Recommendation made by Sliva to install a four way stop at 31st Street and 39th Avenue and seconded by Vasicek. Bogus, Vasicek, Sherer, and Sliva voted "Aye" and none voted "Nay". Absent Borchers

B. 10th Street between 12th & 23rd Avenues for speed control:

Guest Charlie Bahr discussed the concerns from residents in the area of cars speeding on 10th Street. Vehicles are coming off 12th Avenue viaduct southbound turning west onto 10th Street. There are not any controls on avenues on 10th Street until 18th Avenue, which has a stop sign and then a Yield sign on 21st Avenue. This was also a topic at October 13, 2021 Traffic Control Device Committee meeting. Chief Sherer provided a Traffic Speed Survey done April 21, 2022, which showed average speed 23.4 mph. Chief Sherer has tasked Captain Thalken and Patrol Sergeants to put a strategy together for enforcement on 10th Street.

No Action Taken

C. Unfinished business:

Follow up to December 13, 2021 meeting of vehicles parked on north side of 15th Street west of 12th Avenue intersection which causes traffic flow concerns with turning vehicles going west on 10th Street. Decision made to place "No Parking" sign on north side of street within the 15' set back of crosswalk, which is city code.

June

NEW BUSINESS

A. Pedestrian & Cycling Access throughout the City:

Request received from resident of City asking for the city to discuss and consider applying for grants to help keep pedestrians safe and cycling access through the city.

Safe Streets for All (SS4A) grant applications will be opening soon. On June 15, 2022, a group of city staff will be attending a webinar which will review the grant eligibility and opportunities and the application process. The City intends to apply for the SS4A grant's first step of eligibility which may be the Action Plan.

City staff is proposing to order 14 sets of pedestrian and school crossing actuated controllers as part of this fiscal year budget. Controllers will be set by the Street Department.

No action taken.

B. Review of Traffic Device needs within the City:

Downtown Revitalization Survey in progress and many comments have been received by stakeholders and the public.

25th Avenue from 11th Street to the UPRR tracks – Review existing parking and access to determine if restriping parking would add additional parking stalls meeting the standards

UNFINISHED BUSINESS

No unfinished business to discuss.

3. 2023 Pavement Management Program and Priority List.

The City of **Columbus**

MEMORANDUM

DATE: July 7, 2022
FROM: Richard J. Bogus, P.E., City Engineer
TO: Tara Vasicek, City Administrator
RE: Pavement Management Program 2023

RECOMMENDATION:

I recommend approval of the 2023 Pavement Management Program and Priority List for use by the Engineering and Public Works Departments for design and scheduling of roadway rehabilitation services.

DISCUSSION:

The Engineering Department and Public Works Department have worked together for several years on the locations and priorities of street concrete or asphalt rehabilitation. The City has over 500 lane miles of streets.

The departments conduct pavement condition surveys which includes a visual analysis and testing if needed, to determine paving defects, extent of roughness or rutting, and if storm water is entering the subgrade. The locations are then field data collected with global position satellite coordinates. The projects are then determined if the work can be done by the Street Department or should be included in the Engineering design, bid, and contractor build project. Annual projects are then determined based on priority and amount of funding available in the fiscal year budget.

The attached list contains those locations in the current fiscal year for inclusion in the Concrete and Asphalt Rehabilitation Plans and Specifications for construction in 2023 along with the remaining list. The roadway conditions are constantly being evaluated, thus the need to revise the priorities and add to the list.

FISCAL IMPACT:

City Council sets the annual street rehabilitation budget amount each fiscal year.

ALTERNATIVE:

Revise the priority order and/or include additional locations

SIGNATURE:

By: Richard J. Bogus

Approved By: Tara Vasicek

2023 Pavement Management Program

Engineering Design and Bid Projects

FY 2022-2023	Cost Estimate
48th Avenue Driving Lanes from Howard Boulevard to 27th Street and 34th Street to 38th Street - Concrete and ADA Ramps	\$ 950,000.00
Downtown Parking Lot, Pedestrian Nodes, Ramps, Walks - Concrete Patching	\$ 250,000.00
Total FY 2022-2023	\$ 1,200,000.00
Projected Future FY 2023-2024 (subject to annual evaluation and budgeting)	
17th Street, 26th Avenue to 33rd Avenue and 10th Avenue to 26th Avenue - Asphalt Overlay	\$ 700,000.00
17th Street, 26th Avenue to 33rd Avenue and 10th Avenue to 26th Avenue - Concrete and ADA Ramps	\$ 600,000.00
Wagner's Lake Phase 1 - Concrete Patching	\$ 500,000.00
Total Projected Future FY 2023-2024	\$ 1,800,000.00
Projected Future FY 2024-2025 (subject to annual evaluation and budgeting)	
Downtown 12th Street and Avenues - Asphalt Overlay	\$ 700,000.00
Downtown 12th Street and Avenues - Concrete and ADA Ramps	\$ 750,000.00
19th Street, Howard Boulevard to 48th Avenue - Concrete Paving and ADA Ramps	\$ 600,000.00
Christopher Cove Phase 1 - Concrete Patching	\$ 350,000.00
Country Club Shores - Concrete Patching	\$ 300,000.00

Total Projected Future FY 2024-2025	\$ 2,700,000.00
Projected Future FY (subject to annual evaluation)	
Downtown Avenue Phase 2 + Asphalt Overlay	\$ 950,000.00
Downtown Phase 2 + Concrete and ADA	\$ 700,000.00
3rd Avenue, 23rd Street to Air Vista Drive - Concrete Paving and ADA Ramps	\$ 325,000.00
Wagner's Lake Phase 2 - Concrete Patching	\$ 300,000.00
33rd Avenue 27th Street to 38th Street	\$ 500,000.00
36th Street, 48th Avenue to 50th Avenues - Concrete Patching and ADA Ramps	\$ 325,000.00
2nd Street, 7th Avenue to 10th Avenue / 9th Street, 2nd Street to Lovers Lane - Concrete Paving	\$ 300,000.00
18th Avenue, 23rd Street to 38th Street - Concrete Paving	\$ 325,000.00
45th Avenue, 11th Street to Sunrise Place/Sunrise Place/Solar Place - Concrete Paving	\$ 325,000.00
38th Street, 18th Avenue to 48th Avenue	\$ 250,000.00
19th Street, 3rd Avenue to 10th Avenue	\$ 150,000.00
Gruenther Drive - 19th Street to 30th Street/20th Street Cul-De-Sac Road - Concrete Paving	\$ 125,000.00
Cul-De-Sac 16th Street and 12th Avenue	\$ 100,000.00
Wagner Lakes Phase 3 +	\$ 1,600,000.00
Christoper Cove Phase 2 +	\$ 700,000.00

4. 2022 One and Six Year Road Plan.

The City of **Columbus**

M E M O R A N D U M

DATE: July 7, 2022
FROM: Richard J. Bogus, P.E., City Engineer
TO: Tara Vasicek, City Administrator
RE: Nebraska Board of Public Roads Classifications and Standards
2022-2023 Fiscal Year One and Six Year Road Plan

RECOMMENDATION:

I recommend approval of the 2022-2023 fiscal year One and Six Year Road Plan and related forms.

DISCUSSION:

The 2023 One Year Plan (Form 8) consists of the following. Refer to the One and Six Year Road Plan map and Form 7s for locations and details.

Total number of projects: 16
Continued projects from last year: 6
City projects: 13
Private development projects: 3

Total One Year Plan estimated cost: \$49.8 million
Public projects: \$49.175 million
Private projects: \$0.625 million

Estimated amount to be completed within this One Year Plan timeframe: \$28 million

The 2023 Six Year Plan (Form 9) consists of the following. Refer to the One and Six Year Road Plan map and Form 7s for locations and details.

Total number of additional projects from the One Year Plan: 23
Total estimated additional project costs from the One Year Plan: \$20.11 million

Maintenance projects are not included by rule in the One and Six Year Road Plans.

FISCAL IMPACT:

The City has included its portion of the One Year plan costs in the 2021-2022 and/or 2022-2023 budgets

ALTERNATIVE:

Annual 1&6 Year Road Plan certification is required to obtain Highway-user revenue.

SIGNATURE:

By: Richard J. Bogus

Approved By: Tara Vasicek

BOARD OF PUBLIC ROADS CLASSIFICATIONS AND STANDARDS
FORM 7 ONE-AND SIX-YEAR PLAN
HIGHWAY OR STREET IMPROVEMENT PROJECT

County PLATTE	City: COLUMBUS	Village:				
Location Description: <div style="text-align: center;">12th Street from 12th Avenue to 16th Avenue</div> <hr/> <div style="text-align: center;">12th Street from 18th Avenue to 19th Avenue</div> <hr/>						
EXISTING SURFACE TYPE AND STRUCTURES: (Such As Dirt, Gravel, Asphalt, Concrete, Culvert Or Bridge) <div style="text-align: center;">Gravel</div> <hr/>						
Average Daily Traffic: 2022 = <u>200</u> , 2042 = <u>400</u>	Classification Type: (As Shown On Functional Classification Map) Local					
Proposed Improvement						
Design Standard Number: Municipal	Surfacing Concrete	Thickness 6" Width 33'				
<input checked="" type="checkbox"/> Grading <input checked="" type="checkbox"/> Concrete <input type="checkbox"/> Right Of Way <input type="checkbox"/> Lighting <input type="checkbox"/> Aggregate <input checked="" type="checkbox"/> Curb & Gutter <input checked="" type="checkbox"/> Utility Adjustments <input type="checkbox"/> Armor Coat <input checked="" type="checkbox"/> Drainage Structures <input type="checkbox"/> Fencing <input type="checkbox"/> Asphalt <input checked="" type="checkbox"/> Erosion Control <input checked="" type="checkbox"/> Sidewalks						
Bridge To Remain In Place:	Roadway Width	Length	Type			
New Bridge:	Roadway Width	Length	Type			
Box Culvert:	Span	Rise	Length	Type		
Culvert:	Diameter	Length	Type			
Bridges and Culverts Sized	<input type="checkbox"/> Yes <input checked="" type="checkbox"/> N/A <input type="checkbox"/> Hydraulic Analysis Pending					
OTHER CONSTRUCTION FEATURES: <div style="text-align: center;">Paving over existing Gravel Roadway w/Misc. grading</div> <hr/>						
ESTIMATED COST (In Thousands) *OPTIONAL	*COUNTY	*CITY	*STATE	*FEDERAL	*OTHER	TOTAL
		290				290
PROJECT LENGTH (Nearest Tenth, State Unit of Measure) 0.3 Miles				Project No.: M211(35)		
Signature:				Title: City Engineer		Date:

BOARD OF PUBLIC ROADS CLASSIFICATIONS AND STANDARDS
FORM 7 ONE-AND SIX-YEAR PLAN
HIGHWAY OR STREET IMPROVEMENT PROJECT

County PLATTE	City: COLUMBUS	Village:
Location Description: 14th, 15th, and 20th Avenues between 11th Street & 12th Street		
EXISTING SURFACE TYPE AND STRUCTURES: (Such As Dirt, Gravel, Asphalt, Concrete, Culvert Or Bridge) Gravel		
Average Daily Traffic: 2022 = <u>200</u> , 2042 = <u>300</u>	Classification Type: (As Shown On Functional Classification Map) Local	
Proposed Improvement		
Design Standard Number: Municipal	Surfacing Concrete	Thickness 6"
		Width 33'
<input checked="" type="checkbox"/> Grading	<input checked="" type="checkbox"/> Concrete	<input type="checkbox"/> Right Of Way
<input type="checkbox"/> Aggregate	<input checked="" type="checkbox"/> Curb & Gutter	<input checked="" type="checkbox"/> Utility Adjustments
<input type="checkbox"/> Armor Coat	<input checked="" type="checkbox"/> Drainage Structures	<input type="checkbox"/> Fencing
<input type="checkbox"/> Asphalt	<input checked="" type="checkbox"/> Erosion Control	<input checked="" type="checkbox"/> Sidewalks
<input type="checkbox"/> Lighting		
Bridge To Remain In Place:	Roadway Width	Length
		Type
New Bridge:	Roadway Width	Length
		Type
Box Culvert:	Span	Rise
		Length
		Type
Culvert:	Diameter	Length
		Type
Bridges and Culverts Sized	<input type="checkbox"/> Yes <input checked="" type="checkbox"/> N/A <input type="checkbox"/> Hydraulic Analysis Pending	
OTHER CONSTRUCTION FEATURES: Paving over existing Gravel Roadway w/Misc. grading		
ESTIMATED COST (In Thousands) *OPTIONAL	*COUNTY	*CITY
		290
	*STATE	*FEDERAL
	*OTHER	TOTAL
		290
PROJECT LENGTH (Nearest Tenth, State Unit of Measure) 0.3 Miles	Project No.: M211(36)	
Signature:	Title: City Engineer	Date:

BOARD OF PUBLIC ROADS CLASSIFICATIONS AND STANDARDS
FORM 7 ONE-AND SIX-YEAR PLAN
HIGHWAY OR STREET IMPROVEMENT PROJECT

County PLATTE	City: COLUMBUS	Village:				
Location Description: Curb & Gutter (6th Street) 24th Avenue to 26th Avenue, north side of 6th Street, 26th Avenue to 27th Avenue <p style="text-align: center;">The above is what remains of this project</p>						
EXISTING SURFACE TYPE AND STRUCTURES: (Such As Dirt, Gravel, Asphalt, Concrete, Culvert Or Bridge) <p style="text-align: center;">20' - 6" Concrete Paving (no curb and gutter)</p>						
Average Daily Traffic: 2022 = <u>300</u> , 2042 = <u>500</u>	Classification Type: (As Shown On Functional Classification Map) <p style="text-align: center;">Local</p>					
Proposed Improvement						
Design Standard Number: <p style="text-align: center;">Municipal</p>	Surfacing <p style="text-align: center;">Concrete</p>	Thickness <p style="text-align: center;">6"</p>				
		Width <p style="text-align: center;">33'</p>				
<input checked="" type="checkbox"/> Grading <input checked="" type="checkbox"/> Concrete <input type="checkbox"/> Right Of Way <input type="checkbox"/> Lighting <input type="checkbox"/> Aggregate <input checked="" type="checkbox"/> Curb & Gutter <input checked="" type="checkbox"/> Utility Adjustments <input type="checkbox"/> Armor Coat <input checked="" type="checkbox"/> Drainage Structures <input type="checkbox"/> Fencing <input type="checkbox"/> Asphalt <input checked="" type="checkbox"/> Erosion Control <input type="checkbox"/> Sidewalks						
Bridge To Remain In Place:	Roadway Width	Length	Type			
New Bridge:	Roadway Width	Length	Type			
Box Culvert:	Span	Rise	Length Type			
Culvert:	Diameter	Length	Type			
Bridges and Culverts Sized	<input type="checkbox"/> Yes <input checked="" type="checkbox"/> N/A <input type="checkbox"/> Hydraulic Analysis Pending					
OTHER CONSTRUCTION FEATURES: <p style="text-align: center;">Curb & Gutter 5 1/2 ' extension on present 22' paving on both sides makes a 33' paving.</p>						
ESTIMATED COST (In Thousands) *OPTIONAL	*COUNTY	*CITY	*STATE	*FEDERAL	*OTHER	TOTAL
		110				110
PROJECT LENGTH (Nearest Tenth, State Unit of Measure) <p style="text-align: center;">0.3 Miles</p>				Project No.: <p style="text-align: center;">M211(39)</p>		
Signature:				Title: City Engineer		Date:

BOARD OF PUBLIC ROADS CLASSIFICATIONS AND STANDARDS
FORM 7 ONE-AND SIX-YEAR PLAN
HIGHWAY OR STREET IMPROVEMENT PROJECT

County PLATTE	City: COLUMBUS	Village:				
Location Description: Storm Sewer East Park Addition and 17 Street to Agricultural Park						
EXISTING SURFACE TYPE AND STRUCTURES: (Such As Dirt, Gravel, Asphalt, Concrete, Culvert Or Bridge) Asphalt and Concrete Street Crossings						
Average Daily Traffic: 2022 = <u>NA</u> , 2042 = <u>NA</u>		Classification Type: (As Shown On Functional Classification Map) N/A				
Proposed Improvement						
Design Standard Number: Municipal		Surfacing	Thickness	Width		
<input type="checkbox"/> Grading	<input type="checkbox"/> Concrete	<input type="checkbox"/> Right Of Way	<input type="checkbox"/> Lighting			
<input type="checkbox"/> Aggregate	<input type="checkbox"/> Curb & Gutter	<input type="checkbox"/> Utility Adjustments			
<input type="checkbox"/> Armor Coat	<input checked="" type="checkbox"/> Drainage Structures	<input type="checkbox"/> Fencing			
<input type="checkbox"/> Asphalt	<input checked="" type="checkbox"/> Erosion Control	<input type="checkbox"/> Sidewalks			
Bridge To Remain In Place:	Roadway Width	Length	Type			
New Bridge:	Roadway Width	Length	Type			
Box Culvert:	Span	Rise	Length	Type		
Culvert:	Diameter 48" to 54"	Length	Type RCP			
Bridges and Culverts Sized	<input type="checkbox"/> Yes <input checked="" type="checkbox"/> N/A <input type="checkbox"/> Hydraulic Analysis Pending					
OTHER CONSTRUCTION FEATURES: Assist drainage East Park by enlarging storm sewer system.						
ESTIMATED COST (In Thousands) *OPTIONAL	*COUNTY	*CITY	*STATE	*FEDERAL	*OTHER	TOTAL
		2,000				2,000
PROJECT LENGTH (Nearest Tenth, State Unit of Measure) 0.5 Miles			Project No.: M211(44)			
Signature:			Title: City Engineer		Date:	

BOARD OF PUBLIC ROADS CLASSIFICATIONS AND STANDARDS
FORM 7 ONE-AND SIX-YEAR PLAN
HIGHWAY OR STREET IMPROVEMENT PROJECT

County PLATTE	City: COLUMBUS	Village:				
Location Description: <p style="text-align: center;">Storm Sewer Improvement: 30th Avenue from 22nd to 23rd Streets</p> <p style="text-align: center;">20th Street from 30th Avenue to 33rd Avenue</p>						
EXISTING SURFACE TYPE AND STRUCTURES: (Such As Dirt, Gravel, Asphalt, Concrete, Culvert Or Bridge) <p style="text-align: center;">Concrete</p>						
Average Daily Traffic: 2022 = <u>400</u> , 2042 = <u>500</u>	Classification Type: (As Shown On Functional Classification Map) <p style="text-align: center;">Local</p>					
Proposed Improvement						
Design Standard Number:	Surfacing	Thickness				
<input type="checkbox"/> Grading <input type="checkbox"/> Concrete <input type="checkbox"/> Right Of Way <input type="checkbox"/> Lighting <input type="checkbox"/> Aggregate <input checked="" type="checkbox"/> Curb & Gutter <input type="checkbox"/> Utility Adjustments <input type="checkbox"/> Armor Coat <input checked="" type="checkbox"/> Drainage Structures <input type="checkbox"/> Fencing <input type="checkbox"/> Asphalt <input checked="" type="checkbox"/> Erosion Control <input type="checkbox"/> Sidewalks						
Bridge To Remain In Place:	Roadway Width	Length	Type			
New Bridge:	Roadway Width	Length	Type			
Box Culvert:	Span	Rise	Length	Type		
Culvert:	Diameter 18"	Length	Type RCP			
Bridges and Culverts Sized	<input type="checkbox"/> Yes <input checked="" type="checkbox"/> N/A <input type="checkbox"/> Hydraulic Analysis Pending					
OTHER CONSTRUCTION FEATURES: <p style="text-align: center;">Improve storm sewer drainage in this area.</p>						
ESTIMATED COST (In Thousands) *OPTIONAL	*COUNTY	*CITY	*STATE	*FEDERAL	*OTHER	TOTAL
		110				110
PROJECT LENGTH (Nearest Tenth, State Unit of Measure)				Project No.:		
				M211(57)		
Signature:				Title:		Date:
				City Engineer		

BOARD OF PUBLIC ROADS CLASSIFICATIONS AND STANDARDS
FORM 7 ONE-AND SIX-YEAR PLAN
HIGHWAY OR STREET IMPROVEMENT PROJECT

County PLATTE	City: COLUMBUS	Village:				
Location Description: <p style="text-align: center;">Air Vista Drive southwest from 30th Street to point 211' north of 27th Street</p> <p style="text-align: center;">Where it joins 33' concrete paving.</p>						
EXISTING SURFACE TYPE AND STRUCTURES: (Such As Dirt, Gravel, Asphalt, Concrete, Culvert Or Bridge) <p style="text-align: center;">Gravel</p>						
Average Daily Traffic: 2022 = <u>100</u> , 2042 = <u>200</u>	Classification Type: (As Shown On Functional Classification Map) Local					
Proposed Improvement						
Design Standard Number: Municipal	Surfacing Concrete	Thickness 6"				
		Width 33'				
<input checked="" type="checkbox"/> Grading	<input checked="" type="checkbox"/> Concrete	<input type="checkbox"/> Right Of Way				
<input type="checkbox"/> Aggregate	<input checked="" type="checkbox"/> Curb & Gutter	<input checked="" type="checkbox"/> Utility Adjustments				
<input type="checkbox"/> Armor Coat	<input checked="" type="checkbox"/> Drainage Structures	<input type="checkbox"/> Fencing				
<input type="checkbox"/> Asphalt	<input checked="" type="checkbox"/> Erosion Control	<input checked="" type="checkbox"/> Sidewalks				
<input checked="" type="checkbox"/> Lighting						
Bridge To Remain In Place:	Roadway Width	Length	Type			
New Bridge:	Roadway Width	Length	Type			
Box Culvert:	Span	Rise	Length	Type		
Culvert:	Diameter	Length	Type			
Bridges and Culverts Sized	<input type="checkbox"/> Yes <input checked="" type="checkbox"/> N/A <input type="checkbox"/> Hydraulic Analysis Pending					
OTHER CONSTRUCTION FEATURES: <p style="text-align: center;">Paving over existing Gravel Roadway w/Misc. grading</p>						
ESTIMATED COST (In Thousands) *OPTIONAL	*COUNTY	*CITY	*STATE	*FEDERAL	*OTHER	TOTAL
		350				350
PROJECT LENGTH (Nearest Tenth, State Unit of Measure) 0.3 Miles				Project No.: M211(62)		
Signature:				Title: City Engineer		Date:

BOARD OF PUBLIC ROADS CLASSIFICATIONS AND STANDARDS
FORM 7 ONE-AND SIX-YEAR PLAN
HIGHWAY OR STREET IMPROVEMENT PROJECT

County PLATTE	City: COLUMBUS	Village:
Location Description: 12th Street, 37th Avenue to 38 1/2 Avenue - 40 1/2 Avenue to 41st Avenue 13th Street, 40 1/2 Avenue to 41st Avenue, 37th Avenue, 13th Street 1/2 block South 38th Avenue, 12th Street to 13th Street, 1/2 block North, Oida Addition		
EXISTING SURFACE TYPE AND STRUCTURES: (Such As Dirt, Gravel, Asphalt, Concrete, Culvert Or Bridge) Gravel		
Average Daily Traffic: 2022 = <u>100</u> , 2042 = <u>200</u>	Classification Type: (As Shown On Functional Classification Map) Local	
Proposed Improvement		
Design Standard Number: Municipal	Surfacing Concrete	Thickness 6"
		Width 33'
<input checked="" type="checkbox"/> Grading	<input checked="" type="checkbox"/> Concrete	<input type="checkbox"/> Right Of Way
<input type="checkbox"/> Aggregate	<input checked="" type="checkbox"/> Curb & Gutter	<input checked="" type="checkbox"/> Utility Adjustments
<input type="checkbox"/> Armor Coat	<input checked="" type="checkbox"/> Drainage Structures	<input type="checkbox"/> Fencing
<input type="checkbox"/> Asphalt	<input checked="" type="checkbox"/> Erosion Control	<input type="checkbox"/> Sidewalks
<input type="checkbox"/> Lighting		
Bridge To Remain In Place:	Roadway Width	Length
		Type
New Bridge:	Roadway Width	Length
		Type
Box Culvert:	Span	Rise
		Length
		Type
Culvert:	Diameter	Length
		Type
Bridges and Culverts Sized	<input type="checkbox"/> Yes <input checked="" type="checkbox"/> N/A <input type="checkbox"/> Hydraulic Analysis Pending	
OTHER CONSTRUCTION FEATURES: 33' Concrete, Curb & Gutter and Storm Sewer		
ESTIMATED COST (In Thousands) *OPTIONAL	*COUNTY	*CITY
		260
	*STATE	*FEDERAL
		*OTHER
		TOTAL
		260
PROJECT LENGTH (Nearest Tenth, State Unit of Measure) 0.2 Miles	Project No.: M211(64)	
Signature:	Title: City Engineer	Date:

BOARD OF PUBLIC ROADS CLASSIFICATIONS AND STANDARDS
FORM 7 ONE-AND SIX-YEAR PLAN
HIGHWAY OR STREET IMPROVEMENT PROJECT

County PLATTE	City: COLUMBUS	Village:				
Location Description: <div style="text-align: center;">22nd Avenue between 6th Street to 7th Street</div> <hr/> <div style="text-align: center;">25th Avenue between 6th Street to 7th Street</div>						
EXISTING SURFACE TYPE AND STRUCTURES: (Such As Dirt, Gravel, Asphalt, Concrete, Culvert Or Bridge) <div style="text-align: center;">Gravel</div>						
Average Daily Traffic: 2022 = <u>100</u> , 2042 = <u>200</u>		Classification Type: (As Shown On Functional Classification Map) Local				
Proposed Improvement						
Design Standard Number: Municipal		Surfacing Concrete	Thickness 6"	Width 33'		
<input checked="" type="checkbox"/> Grading	<input checked="" type="checkbox"/> Concrete	<input type="checkbox"/> Right Of Way	<input checked="" type="checkbox"/> Lighting			
<input type="checkbox"/> Aggregate	<input checked="" type="checkbox"/> Curb & Gutter	<input checked="" type="checkbox"/> Utility Adjustments			
<input type="checkbox"/> Armor Coat	<input checked="" type="checkbox"/> Drainage Structures	<input type="checkbox"/> Fencing			
<input type="checkbox"/> Asphalt	<input checked="" type="checkbox"/> Erosion Control	<input checked="" type="checkbox"/> Sidewalks			
Bridge To Remain In Place:	Roadway Width	Length	Type			
New Bridge:	Roadway Width	Length	Type			
Box Culvert:	Span	Rise	Length	Type		
Culvert:	Diameter	Length	Type			
Bridges and Culverts Sized	<input type="checkbox"/> Yes <input checked="" type="checkbox"/> N/A <input type="checkbox"/> Hydraulic Analysis Pending					
OTHER CONSTRUCTION FEATURES: <div style="text-align: center;">33' Concrete, Curb & Gutter and Storm Sewer</div>						
ESTIMATED COST (In Thousands) *OPTIONAL	*COUNTY	*CITY	*STATE	*FEDERAL	*OTHER	TOTAL
		115				115
PROJECT LENGTH (Nearest Tenth, State Unit of Measure) 0.1 Miles			Project No.: M211(71)			
Signature:			Title: City Engineer		Date:	

BOARD OF PUBLIC ROADS CLASSIFICATIONS AND STANDARDS
FORM 7 ONE-AND SIX-YEAR PLAN
HIGHWAY OR STREET IMPROVEMENT PROJECT

County PLATTE	City: COLUMBUS	Village:				
Location Description: Gates 1st Subdivision – 2nd Avenue, 8th Street to 10th Street, 10th Street, 3rd Avenue to 2nd Avenue Gates 2nd Subdivision – 2nd Avenue south and southeasterly and return to 9th Avenue.						
EXISTING SURFACE TYPE AND STRUCTURES: (Such As Dirt, Gravel, Asphalt, Concrete, Culvert Or Bridge) <p style="text-align: center;">Gravel</p>						
Average Daily Traffic: 2022 = <u>100</u> , 2042 = <u>200</u>		Classification Type: (As Shown On Functional Classification Map) Local				
Proposed Improvement						
Design Standard Number: Municipal		Surfacing Concrete	Thickness 6"	Width 33'		
<input checked="" type="checkbox"/> Grading	<input checked="" type="checkbox"/> Concrete	<input type="checkbox"/> Right Of Way	<input checked="" type="checkbox"/> Lighting			
<input type="checkbox"/> Aggregate	<input checked="" type="checkbox"/> Curb & Gutter	<input checked="" type="checkbox"/> Utility Adjustments			
<input type="checkbox"/> Armor Coat	<input checked="" type="checkbox"/> Drainage Structures	<input type="checkbox"/> Fencing			
<input type="checkbox"/> Asphalt	<input checked="" type="checkbox"/> Erosion Control	<input checked="" type="checkbox"/> Sidewalks			
Bridge To Remain In Place:	Roadway Width	Length		Type		
New Bridge:	Roadway Width	Length		Type		
Box Culvert:	Span	Rise	Length		Type	
Culvert:	Diameter	Length			Type	
Bridges and Culverts Sized	<input type="checkbox"/> Yes <input checked="" type="checkbox"/> N/A <input type="checkbox"/> Hydraulic Analysis Pending					
OTHER CONSTRUCTION FEATURES: <p style="text-align: center;">33' Concrete, Curb & Gutter and Storm Sewer</p>						
ESTIMATED COST (In Thousands) *OPTIONAL	*COUNTY	*CITY	*STATE	*FEDERAL	*OTHER	TOTAL
		360				360
PROJECT LENGTH (Nearest Tenth, State Unit of Measure) 0.3 Miles			Project No.: M211(111)			
Signature:			Title: City Engineer		Date:	

BOARD OF PUBLIC ROADS CLASSIFICATIONS AND STANDARDS
FORM 7 ONE-AND SIX-YEAR PLAN
HIGHWAY OR STREET IMPROVEMENT PROJECT

County PLATTE	City: COLUMBUS	Village:				
Location Description: Crumley Subdivision – 6th Street and 3rd Avenue – 5th Street east to City Limits, also 2nd Avenue cul-de-sac.						
EXISTING SURFACE TYPE AND STRUCTURES: (<i>Such As Dirt, Gravel, Asphalt, Concrete, Culvert Or Bridge</i>) Gravel						
Average Daily Traffic: 2022 = <u>100</u> , 2042 = <u>200</u>		Classification Type: (<i>As Shown On Functional Classification Map</i>) Local				
Proposed Improvement						
Design Standard Number: Municipal		Surfacing Concrete	Thickness 6"	Width 33'		
<input checked="" type="checkbox"/> Grading	<input checked="" type="checkbox"/> Concrete	<input type="checkbox"/> Right Of Way	<input checked="" type="checkbox"/> Lighting			
<input type="checkbox"/> Aggregate	<input checked="" type="checkbox"/> Curb & Gutter	<input checked="" type="checkbox"/> Utility Adjustments			
<input type="checkbox"/> Armor Coat	<input checked="" type="checkbox"/> Drainage Structures	<input type="checkbox"/> Fencing			
<input type="checkbox"/> Asphalt	<input checked="" type="checkbox"/> Erosion Control	<input checked="" type="checkbox"/> Sidewalks			
Bridge To Remain In Place:	Roadway Width	Length	Type			
New Bridge:	Roadway Width	Length	Type			
Box Culvert:	Span	Rise	Length	Type		
Culvert:	Diameter	Length		Type		
Bridges and Culverts Sized	<input type="checkbox"/> Yes <input checked="" type="checkbox"/> N/A <input type="checkbox"/> Hydraulic Analysis Pending					
OTHER CONSTRUCTION FEATURES: 33' Concrete, Curb & Gutter and Storm Sewer						
ESTIMATED COST (<i>In Thousands</i>) *OPTIONAL	*COUNTY	*CITY	*STATE	*FEDERAL	*OTHER	TOTAL
		260				260
PROJECT LENGTH (Nearest Tenth, State Unit of Measure) 0.1 Miles			Project No.: M211(112)			
Signature:			Title: City Engineer		Date:	

BOARD OF PUBLIC ROADS CLASSIFICATIONS AND STANDARDS
FORM 7 ONE-AND SIX-YEAR PLAN
HIGHWAY OR STREET IMPROVEMENT PROJECT

County PLATTE	City: COLUMBUS	Village:				
Location Description: Sand Subdivision and (Replat Part) of Sand Subdivision, 17 th Street, Public Access Road <hr/> From East 12 th Avenue & East 11 th Avenue from 17 th Street north to Public Access <hr/> Road, 17 th Street from East 11 th Avenue west. <hr/>						
EXISTING SURFACE TYPE AND STRUCTURES: (Such As Dirt, Gravel, Asphalt, Concrete, Culvert Or Bridge) <hr/> <p style="text-align: center;">Gravel</p> <hr/>						
Average Daily Traffic: 2022 = <u>400</u> , 2042 = <u>600</u>		Classification Type: (As Shown On Functional Classification Map) <p style="text-align: center;">Local</p>				
Proposed Improvement						
Design Standard Number: <p style="text-align: center;"><u>Municipal</u></p>		Surfacing <p style="text-align: center;">Concrete</p>	Thickness <p style="text-align: center;">8"</p>	Width <p style="text-align: center;">33'</p>		
<input checked="" type="checkbox"/> Grading <input checked="" type="checkbox"/> Concrete <input type="checkbox"/> Right Of Way <input checked="" type="checkbox"/> Lighting <input type="checkbox"/> Aggregate <input checked="" type="checkbox"/> Curb & Gutter <input checked="" type="checkbox"/> Utility Adjustments <input type="checkbox"/> Armor Coat <input checked="" type="checkbox"/> Drainage Structures <input type="checkbox"/> Fencing <input type="checkbox"/> Asphalt <input checked="" type="checkbox"/> Erosion Control <input checked="" type="checkbox"/> Sidewalks						
Bridge To Remain In Place:	Roadway Width	Length		Type		
New Bridge:	Roadway Width	Length		Type		
Box Culvert:	Span	Rise	Length		Type	
Culvert:	Diameter	Length			Type	
Bridges and Culverts Sized	<input type="checkbox"/> Yes <input checked="" type="checkbox"/> N/A <input type="checkbox"/> Hydraulic Analysis Pending					
OTHER CONSTRUCTION FEATURES: <hr/> <p style="text-align: center;">33' Concrete, Curb & Gutter and Storm Sewer</p> <hr/>						
ESTIMATED COST (In Thousands) *OPTIONAL	*COUNTY	*CITY	*STATE	*FEDERAL	*OTHER	TOTAL
		1130				1130
PROJECT LENGTH (Nearest Tenth, State Unit of Measure) <p style="text-align: center;">0.8 Miles</p>				Project No.: <p style="text-align: center;">M211(114)</p>		
Signature:			Title: City Engineer		Date:	

BOARD OF PUBLIC ROADS CLASSIFICATIONS AND STANDARDS
FORM 7 ONE-AND SIX-YEAR PLAN
HIGHWAY OR STREET IMPROVEMENT PROJECT

County PLATTE	City: COLUMBUS	Village:				
Location Description: West Parkway 1st and 2nd Subdivisions; 12th Street - Munroe Avenue to 46th Avenue; 13th Street - 46th Avenue to 48th Avenue; 14th Street - 248' East of Munroe Avenue to 48th Avenue; Munroe Avenue - 11th Street to 14th Street; 46th Avenue - 11th Street to 14th Street						
EXISTING SURFACE TYPE AND STRUCTURES: (Such As Dirt, Gravel, Asphalt, Concrete, Culvert Or Bridge) <p style="text-align: center;">Gravel</p>						
Average Daily Traffic: 2022 = <u>100</u> , 2042 = <u>200</u>		Classification Type: (As Shown On Functional Classification Map) <p style="text-align: center;">Local</p>				
Proposed Improvement						
Design Standard Number: Municipal		Surfacing Concrete	Thickness 6"	Width 33'		
<input checked="" type="checkbox"/> Grading	<input checked="" type="checkbox"/> Concrete	<input type="checkbox"/> Right Of Way	<input checked="" type="checkbox"/> Lighting			
<input type="checkbox"/> Aggregate	<input checked="" type="checkbox"/> Curb & Gutter	<input checked="" type="checkbox"/> Utility Adjustments			
<input type="checkbox"/> Armor Coat	<input checked="" type="checkbox"/> Drainage Structures	<input type="checkbox"/> Fencing			
<input type="checkbox"/> Asphalt	<input type="checkbox"/> Erosion Control	<input checked="" type="checkbox"/> Sidewalks			
Bridge To Remain In Place:	Roadway Width	Length	Type			
New Bridge:	Roadway Width	Length	Type			
Box Culvert:	Span	Rise	Length	Type		
Culvert:	Diameter	Length	Type			
Bridges and Culverts Sized	<input type="checkbox"/> Yes <input checked="" type="checkbox"/> N/A <input type="checkbox"/> Hydraulic Analysis Pending					
OTHER CONSTRUCTION FEATURES: <p style="text-align: center;">Concrete Paving, Curb & Gutter 33' Wide and Storm Sewer</p>						
ESTIMATED COST (In Thousands) *OPTIONAL	*COUNTY	*CITY	*STATE	*FEDERAL	*OTHER	TOTAL
		440				440
PROJECT LENGTH (Nearest Tenth, State Unit of Measure) 0.4 Miles				Project No.: M211(118)		
Signature:			Title: City Engineer		Date:	

BOARD OF PUBLIC ROADS CLASSIFICATIONS AND STANDARDS
FORM 7 ONE-AND SIX-YEAR PLAN
HIGHWAY OR STREET IMPROVEMENT PROJECT

County PLATTE	City: COLUMBUS	Village:				
Location Description: 26th Avenue from 3 rd to 5 th Streets; 25 th Avenue from 4 th to 5 th Streets; 24 th Avenue from 4 th Street North and South ½ Block; 4 th Street from 23 rd to 24 th Avenue						
EXISTING SURFACE TYPE AND STRUCTURES: (Such As Dirt, Gravel, Asphalt, Concrete, Culvert Or Bridge) Gravel						
Average Daily Traffic: 2022 = <u>200</u> , 2042 = <u>300</u>		Classification Type: (As Shown On Functional Classification Map) Local				
Proposed Improvement						
Design Standard Number: <u>Municipal</u>		Surfacing Concrete	Thickness 6"	Width 33'		
<input checked="" type="checkbox"/> Grading	<input checked="" type="checkbox"/> Concrete	<input type="checkbox"/> Right Of Way	<input checked="" type="checkbox"/> Lighting			
<input type="checkbox"/> Aggregate	<input checked="" type="checkbox"/> Curb & Gutter	<input checked="" type="checkbox"/> Utility Adjustments			
<input type="checkbox"/> Armor Coat	<input checked="" type="checkbox"/> Drainage Structures	<input type="checkbox"/> Fencing			
<input type="checkbox"/> Asphalt	<input checked="" type="checkbox"/> Erosion Control	<input checked="" type="checkbox"/> Sidewalks			
Bridge To Remain In Place:	Roadway Width	Length	Type			
New Bridge:	Roadway Width	Length	Type			
Box Culvert:	Span	Rise	Length	Type		
Culvert:	Diameter	Length		Type		
Bridges and Culverts Sized	<input type="checkbox"/> Yes <input checked="" type="checkbox"/> N/A <input type="checkbox"/> Hydraulic Analysis Pending					
OTHER CONSTRUCTION FEATURES: 33' Concrete Paving, Curb & Gutter, Storm Sewer						
ESTIMATED COST (In Thousands) *OPTIONAL	*COUNTY	*CITY	*STATE	*FEDERAL	*OTHER	TOTAL
		340				340
PROJECT LENGTH (Nearest Tenth, State Unit of Measure) .3 Miles			Project No.: M211(157)			
Signature:			Title: City Engineer		Date:	

BOARD OF PUBLIC ROADS CLASSIFICATIONS AND STANDARDS
FORM 7 ONE-AND SIX-YEAR PLAN
HIGHWAY OR STREET IMPROVEMENT PROJECT

County PLATTE	City: COLUMBUS	Village:				
Location Description: <p style="text-align: center;">Johannes Subdivision</p>						
EXISTING SURFACE TYPE AND STRUCTURES: (Such As Dirt, Gravel, Asphalt, Concrete, Culvert Or Bridge) <p style="text-align: center;">Gravel</p>						
Average Daily Traffic: 2022 = <u>150</u> , 2042 = <u>300</u>		Classification Type: (As Shown On Functional Classification Map) <p style="text-align: center;">Local</p>				
Proposed Improvement						
Design Standard Number: <p style="text-align: center;">Municipal</p>		Surfacing <p style="text-align: center;">Concrete</p>	Thickness <p style="text-align: center;">6"</p>	Width <p style="text-align: center;">33'</p>		
<input checked="" type="checkbox"/> Grading	<input checked="" type="checkbox"/> Concrete	<input type="checkbox"/> Right Of Way	<input type="checkbox"/> Lighting			
<input type="checkbox"/> Aggregate	<input checked="" type="checkbox"/> Curb & Gutter	<input checked="" type="checkbox"/> Utility Adjustments			
<input type="checkbox"/> Armor Coat	<input checked="" type="checkbox"/> Drainage Structures	<input type="checkbox"/> Fencing			
<input type="checkbox"/> Asphalt	<input checked="" type="checkbox"/> Erosion Control	<input checked="" type="checkbox"/> Sidewalks			
Bridge To Remain In Place:	Roadway Width	Length	Type			
New Bridge:	Roadway Width	Length	Type			
Box Culvert:	Span	Rise	Length	Type		
Culvert:	Diameter	Length		Type		
Bridges and Culverts Sized	<input type="checkbox"/> Yes <input checked="" type="checkbox"/> N/A <input type="checkbox"/> Hydraulic Analysis Pending					
OTHER CONSTRUCTION FEATURES: <p style="text-align: center;">Paving over existing Gravel Roadway w/Misc. grading</p>						
ESTIMATED COST (In Thousands) *OPTIONAL	*COUNTY	*CITY	*STATE	*FEDERAL	*OTHER	TOTAL
		2,500				2,500
PROJECT LENGTH (Nearest Tenth, State Unit of Measure) <p style="text-align: center;">1.4 Miles</p>			Project No.: <p style="text-align: center;">M211(190)</p>			
Signature:			Title: City Engineer		Date:	

BOARD OF PUBLIC ROADS CLASSIFICATIONS AND STANDARDS
FORM 7 ONE-AND SIX-YEAR PLAN
HIGHWAY OR STREET IMPROVEMENT PROJECT

County PLATTE	City: COLUMBUS	Village:				
Location Description: 10 th Avenue Lovers Lane to 5 th Street, Lovers Lane 5 th Street to 10 th Avenue, 7 th Avenue from Lovers Lane to South 5 th Street East to 3 rd Avenue.						
EXISTING SURFACE TYPE AND STRUCTURES: (Such As Dirt, Gravel, Asphalt, Concrete, Culvert Or Bridge) Asphalt						
Average Daily Traffic: 2022 = <u>765</u> , 2042 = <u>950</u>	Classification Type: (As Shown On Functional Classification Map) Collector					
Proposed Improvement						
Design Standard Number: <u>Municipal</u>	Surfacing Concrete	Thickness 8"				
		Width 41'				
<input checked="" type="checkbox"/> Grading <input checked="" type="checkbox"/> Concrete <input type="checkbox"/> Right Of Way <input type="checkbox"/> Lighting <input type="checkbox"/> Aggregate <input checked="" type="checkbox"/> Curb & Gutter <input checked="" type="checkbox"/> Utility Adjustments <input type="checkbox"/> Armor Coat <input checked="" type="checkbox"/> Drainage Structures <input type="checkbox"/> Fencing <input type="checkbox"/> Asphalt <input checked="" type="checkbox"/> Erosion Control <input checked="" type="checkbox"/> Sidewalks						
Bridge To Remain In Place:	Roadway Width	Length	Type			
New Bridge:	Roadway Width	Length	Type			
Box Culvert:	Span	Rise	Length Type			
Culvert:	Diameter	Length	Type			
Bridges and Culverts Sized	<input type="checkbox"/> Yes <input checked="" type="checkbox"/> N/A <input type="checkbox"/> Hydraulic Analysis Pending					
OTHER CONSTRUCTION FEATURES: 41' Concrete Paving, Curb & Gutter with Storm Sewer.						
ESTIMATED COST (In Thousands) *OPTIONAL	*COUNTY	*CITY	*STATE	*FEDERAL	*OTHER	TOTAL
		2500				2,500
PROJECT LENGTH (Nearest Tenth, State Unit of Measure) 1.6 Miles				Project No.: M211(220)		
Signature:				Title: City Engineer		Date:

BOARD OF PUBLIC ROADS CLASSIFICATIONS AND STANDARDS
FORM 7 ONE-AND SIX-YEAR PLAN
HIGHWAY OR STREET IMPROVEMENT PROJECT

County PLATTE	City: COLUMBUS	Village:				
Location Description: <p style="text-align: center;">East 14th Avenue from 23rd Street north ¾ mile</p>						
EXISTING SURFACE TYPE AND STRUCTURES: (Such As Dirt, Gravel, Asphalt, Concrete, Culvert Or Bridge) <p style="text-align: center;">Asphalt rural section, 2 lane</p>						
Average Daily Traffic: 2022 = <u>1350</u> , 2042 = <u>1800</u>	Classification Type: (As Shown On Functional Classification Map) <p style="text-align: center;">Collector</p>					
Proposed Improvement						
Design Standard Number: <p style="text-align: center;">Municipal</p>	Surfacing <p style="text-align: center;">Concrete</p>	Thickness <p style="text-align: center;">8"</p>				
		Width <p style="text-align: center;">41'</p>				
<input checked="" type="checkbox"/> Grading	<input checked="" type="checkbox"/> Concrete	<input checked="" type="checkbox"/> Right Of Way				
<input type="checkbox"/> Aggregate	<input checked="" type="checkbox"/> Curb & Gutter	<input checked="" type="checkbox"/> Utility Adjustments				
<input type="checkbox"/> Armor Coat	<input checked="" type="checkbox"/> Drainage Structures	<input type="checkbox"/> Fencing				
<input type="checkbox"/> Asphalt	<input checked="" type="checkbox"/> Erosion Control	<input type="checkbox"/> Sidewalks				
<input type="checkbox"/> Lighting						
Bridge To Remain In Place:	Roadway Width	Length	Type			
New Bridge: X	Roadway Width	Length	Type			
Box Culvert:	Span	Rise	Length			
Culvert:	Diameter	Length	Type			
Bridges and Culverts Sized	<input type="checkbox"/> Yes <input checked="" type="checkbox"/> N/A <input type="checkbox"/> Hydraulic Analysis Pending					
OTHER CONSTRUCTION FEATURES: <p style="text-align: center;">Federal Funds, Purchase Program and Assessments</p>						
ESTIMATED COST (In Thousands) *OPTIONAL	*COUNTY	*CITY	*STATE	*FEDERAL	*OTHER	TOTAL
		1900				1900
PROJECT LENGTH (Nearest Tenth, State Unit of Measure) <p style="text-align: center;">0.8 MILES</p>				Project No.: <p style="text-align: center;">M211(257)</p>		
Signature:				Title: <p style="text-align: center;">City Engineer</p>		Date:

BOARD OF PUBLIC ROADS CLASSIFICATIONS AND STANDARDS
FORM 7 ONE-AND SIX-YEAR PLAN
HIGHWAY OR STREET IMPROVEMENT PROJECT

County PLATTE	City: COLUMBUS	Village:				
Location Description: 26th Avenue from 27rd Street to 32nd Street						
EXISTING SURFACE TYPE AND STRUCTURES: (Such As Dirt, Gravel, Asphalt, Concrete, Culvert Or Bridge) Concrete						
Average Daily Traffic: 2022 = <u>5450</u> , 2042 = <u>7500</u>	Classification Type: (As Shown On Functional Classification Map) Collector					
Proposed Improvement						
Design Standard Number: Municipal	Surfacing Concrete 8" Thickness 33' Width					
<input type="checkbox"/> Grading	<input checked="" type="checkbox"/> Concrete	<input type="checkbox"/> Right Of Way				
<input type="checkbox"/> Aggregate	<input checked="" type="checkbox"/> Curb & Gutter	<input checked="" type="checkbox"/> Utility Adjustments				
<input type="checkbox"/> Armor Coat	<input type="checkbox"/> Drainage Structures	<input type="checkbox"/> Fencing				
<input type="checkbox"/> Asphalt	<input checked="" type="checkbox"/> Erosion Control	<input type="checkbox"/> Sidewalks				
<input type="checkbox"/> Lighting						
Bridge To Remain In Place:	Roadway Width	Length	Type			
New Bridge:	Roadway Width	Length	Type			
Box Culvert:	Span	Rise	Length	Type		
Culvert:	Diameter	Length	Type			
Bridges and Culverts Sized	<input type="checkbox"/> Yes <input checked="" type="checkbox"/> N/A <input type="checkbox"/> Hydraulic Analysis Pending					
OTHER CONSTRUCTION FEATURES: Federal Funds Purchase Program						
ESTIMATED COST (In Thousands) *OPTIONAL	*COUNTY	*CITY	*STATE	*FEDERAL	*OTHER	TOTAL
		820				820
PROJECT LENGTH (Nearest Tenth, State Unit of Measure) 0.3 MILES				Project No.: M211(264)		
Signature:				Title: CITY ENGINEER		Date:

BOARD OF PUBLIC ROADS CLASSIFICATIONS AND STANDARDS
FORM 7 ONE-AND SIX-YEAR PLAN
HIGHWAY OR STREET IMPROVEMENT PROJECT

County PLATTE	City: COLUMBUS	Village:				
Location Description: <p style="text-align: center;">23rd Street, Howard Blvd. to 54th Avenue</p>						
EXISTING SURFACE TYPE AND STRUCTURES: (<i>Such As Dirt, Gravel, Asphalt, Concrete, Culvert Or Bridge</i>) <p style="text-align: center;">Asphalt rural section, 2 lane</p>						
Average Daily Traffic: 2022 = <u>1600</u> , 2042 = <u>3000</u>		Classification Type: (<i>As Shown On Functional Classification Map</i>) <p style="text-align: center;">Collector</p>				
Proposed Improvement						
Design Standard Number: <p style="text-align: center;">Municipal</p>		Surfacing <p style="text-align: center;">Concrete</p>	Thickness <p style="text-align: center;">9"</p>	Width <p style="text-align: center;">33'</p>		
<input checked="" type="checkbox"/> Grading	<input checked="" type="checkbox"/> Concrete	<input checked="" type="checkbox"/> Right Of Way	<input checked="" type="checkbox"/> Lighting			
<input type="checkbox"/> Aggregate	<input checked="" type="checkbox"/> Curb & Gutter	<input checked="" type="checkbox"/> Utility Adjustments			
<input type="checkbox"/> Armor Coat	<input checked="" type="checkbox"/> Drainage Structures	<input type="checkbox"/> Fencing			
<input type="checkbox"/> Asphalt	<input checked="" type="checkbox"/> Erosion Control	<input type="checkbox"/> Sidewalks			
Bridge To Remain In Place:	Roadway Width	Length		Type		
New Bridge:	Roadway Width	Length		Type		
Box Culvert:	Span	Rise	Length	Type		
Culvert:	Diameter	Length			Type	
Bridges and Culverts Sized	<input type="checkbox"/> Yes <input checked="" type="checkbox"/> N/A <input type="checkbox"/> Hydraulic Analysis Pending					
OTHER CONSTRUCTION FEATURES: <p style="text-align: center;">41' Concrete, Curb and Gutter, and Storm Sewer. Transition of 48th Ave. from 23rd St. North approximately 100 feet.</p>						
ESTIMATED COST (<i>In Thousands</i>) *OPTIONAL	*COUNTY	*CITY	*STATE	*FEDERAL	*OTHER	TOTAL
		2300				2300
PROJECT LENGTH (Nearest Tenth, State Unit of Measure) <p style="text-align: center;">1.4 Miles</p>			Project No.: <p style="text-align: center;">M211(273)</p>			
Signature:			Title: City Engineer		Date:	

BOARD OF PUBLIC ROADS CLASSIFICATIONS AND STANDARDS
FORM 7 ONE-AND SIX-YEAR PLAN
HIGHWAY OR STREET IMPROVEMENT PROJECT

County PLATTE	City: COLUMBUS	Village:				
Location Description: 48 th Ave. Bradshaw Park Entrance to 11 th St., 11 th St. from 48 th Ave. to 41 st Ave.						
EXISTING SURFACE TYPE AND STRUCTURES: (Such As Dirt, Gravel, Asphalt, Concrete, Culvert Or Bridge) Asphalt & concrete rural section						
Average Daily Traffic: 2022 = <u>1300</u> , 2042 = <u>2300</u>		Classification Type: (As Shown On Functional Classification Map) Collector				
Proposed Improvement						
Design Standard Number: Municipal		Surfacing Concrete	Thickness 9"	Width 33'		
<input checked="" type="checkbox"/> Grading	<input checked="" type="checkbox"/> Concrete	<input type="checkbox"/> Right Of Way	<input checked="" type="checkbox"/> Lighting			
<input type="checkbox"/> Aggregate	<input checked="" type="checkbox"/> Curb & Gutter	<input checked="" type="checkbox"/> Utility Adjustments			
<input type="checkbox"/> Armor Coat	<input checked="" type="checkbox"/> Drainage Structures	<input type="checkbox"/> Fencing			
<input type="checkbox"/> Asphalt	<input checked="" type="checkbox"/> Erosion Control	<input checked="" type="checkbox"/> Sidewalks			
Bridge To Remain In Place:	Roadway Width	Length		Type		
New Bridge:	Roadway Width	Length		Type		
Box Culvert:	Span	Rise	Length		Type	
Culvert:	Diameter	Length			Type	
Bridges and Culverts Sized	<input type="checkbox"/> Yes <input checked="" type="checkbox"/> N/A <input type="checkbox"/> Hydraulic Analysis Pending					
OTHER CONSTRUCTION FEATURES: 33' Wide concrete roadway w/curb & gutter						
ESTIMATED COST (In Thousands) *OPTIONAL	*COUNTY	*CITY	*STATE	*FEDERAL	*OTHER	TOTAL
		2000				2000
PROJECT LENGTH (Nearest Tenth, State Unit of Measure) 0.8 Miles				Project No.: M211(288)		
Signature:			Title: City Engineer		Date:	

BOARD OF PUBLIC ROADS CLASSIFICATIONS AND STANDARDS
FORM 7 ONE-AND SIX-YEAR PLAN
HIGHWAY OR STREET IMPROVEMENT PROJECT

County PLATTE	City: COLUMBUS	Village:				
Location Description: <p style="text-align: center;">Deerfield Park 2nd Add.</p>						
EXISTING SURFACE TYPE AND STRUCTURES: (Such As Dirt, Gravel, Asphalt, Concrete, Culvert Or Bridge) <p style="text-align: center;">Undeveloped</p>						
Average Daily Traffic: 2022 = <u>0</u> , 2042 = <u>200</u>		Classification Type: (As Shown On Functional Classification Map) <p style="text-align: center;">Local</p>				
Proposed Improvement						
Design Standard Number: <p style="text-align: center;">Municipal</p>		Surfacing Concrete	Thickness 6"	Width 33'		
<input checked="" type="checkbox"/> Grading	<input checked="" type="checkbox"/> Concrete	<input type="checkbox"/> Right Of Way	<input checked="" type="checkbox"/> Lighting			
<input type="checkbox"/> Aggregate	<input checked="" type="checkbox"/> Curb & Gutter	<input type="checkbox"/> Utility Adjustments			
<input type="checkbox"/> Armor Coat	<input checked="" type="checkbox"/> Drainage Structures	<input type="checkbox"/> Fencing			
<input type="checkbox"/> Asphalt	<input checked="" type="checkbox"/> Erosion Control	<input checked="" type="checkbox"/> Sidewalks			
Bridge To Remain In Place:	Roadway Width	Length		Type		
New Bridge:	Roadway Width	Length		Type		
Box Culvert:	Span	Rise	Length	Type		
Culvert:	Diameter	Length			Type	
Bridges and Culverts Sized	<input type="checkbox"/> Yes <input checked="" type="checkbox"/> N/A <input type="checkbox"/> Hydraulic Analysis Pending					
OTHER CONSTRUCTION FEATURES:						
.....						
.....						
.....						
.....						
ESTIMATED COST (In Thousands) *OPTIONAL	*COUNTY	*CITY	*STATE	*FEDERAL	*OTHER	TOTAL
					180	180
PROJECT LENGTH (Nearest Tenth, State Unit of Measure) <p style="text-align: center;">0.2 Miles</p>				Project No.: <p style="text-align: center;">M211(289)</p>		
Signature:			Title: City Engineer		Date:	

BOARD OF PUBLIC ROADS CLASSIFICATIONS AND STANDARDS
FORM 7 ONE-AND SIX-YEAR PLAN
HIGHWAY OR STREET IMPROVEMENT PROJECT

County PLATTE	City: COLUMBUS	Village:
Location Description: Ag Park Drainage 10 th Ave. & 19 th St. drainage to Lost Creek rail road bridge SE corner Christopher's Cove		
EXISTING SURFACE TYPE AND STRUCTURES: (Such As Dirt, Gravel, Asphalt, Concrete, Culvert Or Bridge) Open channel drainage		
Average Daily Traffic: 2022 = <u>N/A</u> , 2042 = <u>N/A</u>	Classification Type: (As Shown On Functional Classification Map) N/A	
Proposed Improvement		
Design Standard Number:		
<input checked="" type="checkbox"/> Grading	<input type="checkbox"/> Concrete	<input type="checkbox"/> Right Of Way
<input type="checkbox"/> Aggregate	<input type="checkbox"/> Curb & Gutter	<input type="checkbox"/> Utility Adjustments
<input type="checkbox"/> Armor Coat	<input checked="" type="checkbox"/> Drainage Structures	<input type="checkbox"/> Fencing
<input type="checkbox"/> Asphalt	<input checked="" type="checkbox"/> Erosion Control	<input type="checkbox"/> Sidewalks
<input type="checkbox"/> Lighting		
Bridge To Remain In Place:	Roadway Width	Length
New Bridge:	Roadway Width	Length
Box Culvert:	Span	Rise
Culvert:	Diameter 24" to twin 30"	Length
Bridges and Culverts Sized	<input type="checkbox"/> Yes <input checked="" type="checkbox"/> N/A <input type="checkbox"/> Hydraulic Analysis Pending	
OTHER CONSTRUCTION FEATURES: Clean out and upgrade drainage system and build retention structure		
ESTIMATED COST (In Thousands) *OPTIONAL	*COUNTY	*CITY
		250
		750
		1,000
PROJECT LENGTH (Nearest Tenth, State Unit of Measure) 0.9 Miles	Project No.: M211(290)	
Signature:	Title: City Engineer	Date:

BOARD OF PUBLIC ROADS CLASSIFICATIONS AND STANDARDS
FORM 7 ONE-AND SIX-YEAR PLAN
HIGHWAY OR STREET IMPROVEMENT PROJECT

County PLATTE	City: COLUMBUS	Village:				
Location Description: 21 st Avenue from 1 st to 3 rd Street; 21 st Avenue from 3 rd Street North ½ Block; 4 Street from 20 th to 21 st Avenue; 4 th Street from 19 th to 20 th Avenue; 3 rd Street from 19 th to 20 th Avenue						
EXISTING SURFACE TYPE AND STRUCTURES: (Such As Dirt, Gravel, Asphalt, Concrete, Culvert Or Bridge) Gravel						
Average Daily Traffic: 2022 = <u>200</u> , 2042 = <u>300</u>		Classification Type: (As Shown On Functional Classification Map) Local				
Proposed Improvement						
Design Standard Number: Municipal		Surfacing Concrete	Thickness 6"	Width 33'		
<input checked="" type="checkbox"/> Grading	<input checked="" type="checkbox"/> Concrete	<input type="checkbox"/> Right Of Way	<input type="checkbox"/> Lighting			
<input type="checkbox"/> Aggregate	<input checked="" type="checkbox"/> Curb & Gutter	<input checked="" type="checkbox"/> Utility Adjustments			
<input type="checkbox"/> Armor Coat	<input checked="" type="checkbox"/> Drainage Structures	<input type="checkbox"/> Fencing			
<input type="checkbox"/> Asphalt	<input checked="" type="checkbox"/> Erosion Control	<input type="checkbox"/> Sidewalks			
Bridge To Remain In Place:	Roadway Width	Length	Type			
New Bridge:	Roadway Width	Length	Type			
Box Culvert:	Span	Rise	Length	Type		
Culvert:	Diameter	Length	Type			
Bridges and Culverts Sized	<input type="checkbox"/> Yes <input checked="" type="checkbox"/> N/A <input type="checkbox"/> Hydraulic Analysis Pending					
OTHER CONSTRUCTION FEATURES: 33' Concrete Paving and Storm Sewer						
ESTIMATED COST (In Thousands) *OPTIONAL	*COUNTY	*CITY	*STATE	*FEDERAL	*OTHER	TOTAL
		370				370
PROJECT LENGTH (Nearest Tenth, State Unit of Measure) 0.3 Miles			Project No.: M211(301)			
Signature:			Title: City Engineer		Date:	

BOARD OF PUBLIC ROADS CLASSIFICATIONS AND STANDARDS
FORM 7 ONE-AND SIX-YEAR PLAN
HIGHWAY OR STREET IMPROVEMENT PROJECT

County PLATTE	City: COLUMBUS	Village:				
Location Description: <p style="text-align: center;">4 Street from 16th to 17th Avenue; 4 Street From 14th to 15th Avenue</p> <p style="text-align: center;">3rd Street from 14th to 15th Avenue; 3rd Street from 13th to 14th Avenue</p> <p style="text-align: center;">2nd Street from 14th to 15th Avenue; 2nd Street from 13th to 14th Avenue; 15th Avenue 3rd to 4th Street; 13th Avenue from 2nd to 3rd Street</p>						
EXISTING SURFACE TYPE AND STRUCTURES: (Such As Dirt, Gravel, Asphalt, Concrete, Culvert Or Bridge) <p style="text-align: center;">Gravel</p>						
Average Daily Traffic: 2022 = <u>200</u> , 2042 = <u>300</u>	Classification Type: (As Shown On Functional Classification Map) <p style="text-align: center;">Local</p>					
Proposed Improvement						
Design Standard Number: Municipal	Surfacing Concrete	Thickness 6"				
		Width 33'				
<input type="checkbox"/> Grading <input type="checkbox"/> Concrete <input type="checkbox"/> Right Of Way <input type="checkbox"/> Lighting <input type="checkbox"/> Aggregate <input type="checkbox"/> Curb & Gutter <input type="checkbox"/> Utility Adjustments <input type="checkbox"/> Armor Coat <input type="checkbox"/> Drainage Structures <input type="checkbox"/> Fencing <input type="checkbox"/> Asphalt <input type="checkbox"/> Erosion Control <input type="checkbox"/> Sidewalks						
Bridge To Remain In Place:	Roadway Width	Length	Type			
New Bridge:	Roadway Width	Length	Type			
Box Culvert:	Span	Rise	Length Type			
Culvert:	Diameter	Length	Type			
Bridges and Culverts Sized	<input type="checkbox"/> Yes <input checked="" type="checkbox"/> N/A <input type="checkbox"/> Hydraulic Analysis Pending					
OTHER CONSTRUCTION FEATURES: <p style="text-align: center;">33' Concrete Paving and Storm Sewer</p>						
ESTIMATED COST (In Thousands) *OPTIONAL	*COUNTY	*CITY	*STATE	*FEDERAL	*OTHER	TOTAL
		525				525
PROJECT LENGTH (Nearest Tenth, State Unit of Measure) 0.4 Miles				Project No.: M211(302)		
Signature:				Title: City Engineer		Date:

BOARD OF PUBLIC ROADS CLASSIFICATIONS AND STANDARDS
FORM 7 ONE-AND SIX-YEAR PLAN
HIGHWAY OR STREET IMPROVEMENT PROJECT

County PLATTE	City: COLUMBUS	Village:				
Location Description: Powerhouse Park Trail, Phase 1 North side of Lost Creek Parkway along Lost Creek Flood Control Ditch from 3 rd to Wilderness Park Rd.						
EXISTING SURFACE TYPE AND STRUCTURES: (Such As Dirt, Gravel, Asphalt, Concrete, Culvert Or Bridge) Undeveloped land.						
Average Daily Traffic: 2022 = <u> N/A </u> , 2042 = <u> N/A </u>		Classification Type: (As Shown On Functional Classification Map) N/A				
Proposed Improvement						
Design Standard Number: Municipal		Surfacing Concrete	Thickness 6"	Width 10'		
<input checked="" type="checkbox"/> Grading	<input checked="" type="checkbox"/> Concrete	<input type="checkbox"/> Right Of Way	<input type="checkbox"/> Lighting			
<input type="checkbox"/> Aggregate	<input type="checkbox"/> Curb & Gutter	<input type="checkbox"/> Utility Adjustments	<input checked="" type="checkbox"/> Trail			
<input type="checkbox"/> Armor Coat	<input checked="" type="checkbox"/> Drainage Structures	<input type="checkbox"/> Fencing				
<input type="checkbox"/> Asphalt	<input checked="" type="checkbox"/> Erosion Control	<input checked="" type="checkbox"/> Sidewalks				
Bridge To Remain In Place:	Roadway Width	Length		Type		
New Bridge: X	Roadway Width	Length		Type		
Box Culvert:	Span	Rise	Length	Type		
Culvert:	Diameter	Length			Type	
Bridges and Culverts Sized	<input type="checkbox"/> Yes <input checked="" type="checkbox"/> N/A <input type="checkbox"/> Hydraulic Analysis Pending					
OTHER CONSTRUCTION FEATURES: Nebraska Game & Parks Recreational Trail Grant (50%) Lower Loup NRD (15%)						
ESTIMATED COST (In Thousands) *OPTIONAL	*COUNTY	*CITY	*STATE	*FEDERAL	*OTHER	TOTAL
		175	250		75	500
PROJECT LENGTH (Nearest Tenth, State Unit of Measure) 1.0 Miles				Project No.: M211(316)		
Signature:			Title: City Engineer		Date:	

BOARD OF PUBLIC ROADS CLASSIFICATIONS AND STANDARDS
FORM 7 ONE-AND SIX-YEAR PLAN
HIGHWAY OR STREET IMPROVEMENT PROJECT

County PLATTE	City: COLUMBUS	Village:				
Location Description: <p style="text-align: center;">Power House Park Trail Phase 2</p> <p style="text-align: center;">North side of Lost Creek Parkway along Lost Creek Flood Control ditch from Wilderness Park Road to 3rd Ave.</p>						
EXISTING SURFACE TYPE AND STRUCTURES: (Such As Dirt, Gravel, Asphalt, Concrete, Culvert Or Bridge) <p style="text-align: center;">Undeveloped Land</p>						
Average Daily Traffic: 2022 = <u>0</u> , 2042 = <u>N/A</u>	Classification Type: (As Shown On Functional Classification Map) <p style="text-align: center;">N/A</p>					
Proposed Improvement						
Design Standard Number: Municipal	Surfacing Concrete	6" 10'				
<input checked="" type="checkbox"/> Grading <input checked="" type="checkbox"/> Concrete <input type="checkbox"/> Right Of Way <input type="checkbox"/> Lighting <input type="checkbox"/> Aggregate <input type="checkbox"/> Curb & Gutter <input type="checkbox"/> Utility Adjustments <input checked="" type="checkbox"/> Trail..... <input type="checkbox"/> Armor Coat <input checked="" type="checkbox"/> Drainage Structures <input type="checkbox"/> Fencing <input type="checkbox"/> Asphalt <input checked="" type="checkbox"/> Erosion Control <input checked="" type="checkbox"/> Sidewalks						
Bridge To Remain In Place:	Roadway Width	Length Type				
New Bridge:	Roadway Width	Length Type				
Box Culvert:	Span	Rise Length Type				
Culvert:	Diameter	Length Type				
Bridges and Culverts Sized	<input type="checkbox"/> Yes <input checked="" type="checkbox"/> N/A <input type="checkbox"/> Hydraulic Analysis Pending					
OTHER CONSTRUCTION FEATURES: <p style="text-align: center;">Proposed: Nebraska Games & Park Recreational Trail Grant (50%)</p> <p style="text-align: center;">Proposed: Lower Loup NRD (15%)</p>						
ESTIMATED COST (In Thousands) *OPTIONAL	*COUNTY	*CITY	*STATE	*FEDERAL	*OTHER	TOTAL
		175	250		75	500
PROJECT LENGTH (Nearest Tenth, State Unit of Measure) 1.0 Miles				Project No.: M211(324)		
Signature:				Title: City Engineer		Date:

BOARD OF PUBLIC ROADS CLASSIFICATIONS AND STANDARDS
FORM 7 ONE-AND SIX-YEAR PLAN
HIGHWAY OR STREET IMPROVEMENT PROJECT

County PLATTE	City: COLUMBUS	Village:				
Location Description: <p style="text-align: center;">23 Street From 32 Avenue to East of East 11 Avenue</p>						
EXISTING SURFACE TYPE AND STRUCTURES: (Such As Dirt, Gravel, Asphalt, Concrete, Culvert Or Bridge) <p style="text-align: center;">Asphalt over Concrete</p>						
Average Daily Traffic: 2022 = <u>23,730</u> , 2042 = <u>40,000</u>	Classification Type: (As Shown On Functional Classification Map) <p style="text-align: center;">Expressway</p>					
Proposed Improvement						
Design Standard Number: Highway	Surfacing Concrete	Thickness TBD	Width 60' Plus			
<input checked="" type="checkbox"/> Grading	<input checked="" type="checkbox"/> Concrete	<input checked="" type="checkbox"/> Right Of Way	<input checked="" type="checkbox"/> Lighting			
<input type="checkbox"/> Aggregate	<input checked="" type="checkbox"/> Curb & Gutter	<input checked="" type="checkbox"/> Utility Adjustments	<input checked="" type="checkbox"/> Traffic Signals			
<input type="checkbox"/> Armor Coat	<input checked="" type="checkbox"/> Drainage Structures	<input type="checkbox"/> Fencing				
<input type="checkbox"/> Asphalt	<input checked="" type="checkbox"/> Erosion Control	<input checked="" type="checkbox"/> Sidewalks				
Bridge To Remain In Place:	Roadway Width	Length	Type			
New Bridge:	Roadway Width	Length	Type			
Box Culvert:	Span	Rise	Length	Type		
Culvert:	Diameter	Length	Type			
Bridges and Culverts Sized	<input type="checkbox"/> Yes <input checked="" type="checkbox"/> N/A <input type="checkbox"/> Hydraulic Analysis Pending					
OTHER CONSTRUCTION FEATURES: NDOT Project – State and City funds. Sidewalk replacement, traffic signal replacement, Partial access elimination property acquisition						
ESTIMATED COST (In Thousands) *OPTIONAL	*COUNTY	*CITY	*STATE	*FEDERAL	*OTHER	TOTAL
		10,800	21,200			32,000
PROJECT LENGTH (Nearest Tenth, State Unit of Measure) 2.7 Miles				Project No.: M211(325)		
Signature:				Title: City Engineer		Date:

BOARD OF PUBLIC ROADS CLASSIFICATIONS AND STANDARDS
FORM 7 ONE-AND SIX-YEAR PLAN
HIGHWAY OR STREET IMPROVEMENT PROJECT

County PLATTE	City: COLUMBUS	Village:				
Location Description: <p style="text-align: center;">Riverside 3rd Addition</p>						
EXISTING SURFACE TYPE AND STRUCTURES: (Such As Dirt, Gravel, Asphalt, Concrete, Culvert Or Bridge) <p style="text-align: center;">Undeveloped Land</p>						
Average Daily Traffic: 2022 = <u>0</u> 0 2042 = <u>100</u>	Classification Type: (As Shown On Functional Classification Map) <p style="text-align: center;">Local</p>					
Proposed Improvement						
Design Standard Number: <p style="text-align: center;">Municipal</p>	Surfacing <p style="text-align: center;">Concrete</p>	Thickness <p style="text-align: center;">6"</p>				
		Width <p style="text-align: center;">33'</p>				
<input checked="" type="checkbox"/> Grading <input checked="" type="checkbox"/> Concrete <input type="checkbox"/> Right Of Way <input checked="" type="checkbox"/> Lighting <input type="checkbox"/> Aggregate <input checked="" type="checkbox"/> Curb & Gutter <input type="checkbox"/> Utility Adjustments <input type="checkbox"/> <input type="checkbox"/> Armor Coat <input checked="" type="checkbox"/> Drainage Structures <input type="checkbox"/> Fencing <input type="checkbox"/> Asphalt <input type="checkbox"/> Erosion Control <input type="checkbox"/> Sidewalks						
Bridge To Remain In Place:	Roadway Width	Length	Type			
New Bridge:	Roadway Width	Length	Type			
Box Culvert:	Span	Rise	Length			
Culvert:	Diameter	Length	Type			
Bridges and Culverts Sized	<input type="checkbox"/> Yes <input checked="" type="checkbox"/> N/A <input type="checkbox"/> Hydraulic Analysis Pending					
OTHER CONSTRUCTION FEATURES: <p style="text-align: center;">Private development. Roads turned over to city.</p>						
ESTIMATED COST (In Thousands) *OPTIONAL	*COUNTY	*CITY	*STATE	*FEDERAL	*OTHER	TOTAL
					125	125
PROJECT LENGTH (Nearest Tenth, State Unit of Measure) <p style="text-align: center;">0.1 Miles</p>				Project No.: <p style="text-align: center;">M211(346)</p>		
Signature:				Title: <p style="text-align: center;">City Engineer</p>		Date:

BOARD OF PUBLIC ROADS CLASSIFICATIONS AND STANDARDS
FORM 7 ONE-AND SIX-YEAR PLAN
HIGHWAY OR STREET IMPROVEMENT PROJECT

County PLATTE	City: COLUMBUS	Village:				
Location Description: <p style="text-align: center;">23rd Street / Shady Lake Road from 54th Avenue to West Corporate Limits</p> <p style="text-align: center;">SID #188</p>						
EXISTING SURFACE TYPE AND STRUCTURES: (Such As Dirt, Gravel, Asphalt, Concrete, Culvert Or Bridge) <p style="text-align: center;">24' Rural Asphalt</p>						
Average Daily Traffic: 2022 = <u>1,360</u> 0 2042 = <u>2,500</u>		Classification Type: (As Shown On Functional Classification Map) <p style="text-align: center;">Arterial</p>				
Proposed Improvement						
Design Standard Number: Municipal		Surfacing Concrete	Thickness 9"	Width 41'		
<input checked="" type="checkbox"/> Grading	<input checked="" type="checkbox"/> Concrete	<input type="checkbox"/> Right Of Way	<input checked="" type="checkbox"/> Lighting			
<input type="checkbox"/> Aggregate	<input checked="" type="checkbox"/> Curb & Gutter	<input type="checkbox"/> Utility Adjustments	<input type="checkbox"/>			
<input type="checkbox"/> Armor Coat	<input checked="" type="checkbox"/> Drainage Structures	<input type="checkbox"/> Fencing			
<input type="checkbox"/> Asphalt	<input type="checkbox"/> Erosion Control	<input checked="" type="checkbox"/> Sidewalks			
Bridge To Remain In Place:	Roadway Width	Length	Type			
New Bridge:	Roadway Width	Length	Type			
Box Culvert:	Span	Rise	Length	Type		
Culvert:	Diameter	Length	Type			
Bridges and Culverts Sized	<input type="checkbox"/> Yes <input checked="" type="checkbox"/> N/A <input type="checkbox"/> Hydraulic Analysis Pending					
OTHER CONSTRUCTION FEATURES: <p style="text-align: center;">Federal Funds Purchase Program Assessments</p>						
ESTIMATED COST (In Thousands) *OPTIONAL	*COUNTY	*CITY	*STATE	*FEDERAL	*OTHER	TOTAL
		3,450				3,450
PROJECT LENGTH (Nearest Tenth, State Unit of Measure) 0.6 Miles				Project No.:M211(352)		
Signature:			Title: City Engineer		Date:	

BOARD OF PUBLIC ROADS CLASSIFICATIONS AND STANDARDS
FORM 7 ONE-AND SIX-YEAR PLAN
HIGHWAY OR STREET IMPROVEMENT PROJECT

County PLATTE	City: COLUMBUS	Village:				
Location Description: <p style="text-align: center;">48th Avenue to 23rd Street South to Bradshaw Park</p> <p style="text-align: center;">SID #189</p>						
EXISTING SURFACE TYPE AND STRUCTURES: (Such As Dirt, Gravel, Asphalt, Concrete, Culvert Or Bridge) <p style="text-align: center;">24' rural asphalt</p>						
Average Daily Traffic: 2022 = <u>1,345</u> 0 2042 = <u>1,900</u>		Classification Type: (As Shown On Functional Classification Map) <p style="text-align: center;">Collector</p>				
Proposed Improvement						
Design Standard Number: Municipal		Surfacing Concrete	Thickness 9"	Width 33'		
<input checked="" type="checkbox"/> Grading	<input checked="" type="checkbox"/> Concrete	<input type="checkbox"/> Right Of Way	<input checked="" type="checkbox"/> Lighting			
<input type="checkbox"/> Aggregate	<input checked="" type="checkbox"/> Curb & Gutter	<input type="checkbox"/> Utility Adjustments	<input type="checkbox"/>			
<input type="checkbox"/> Armor Coat	<input checked="" type="checkbox"/> Drainage Structures	<input type="checkbox"/> Fencing			
<input type="checkbox"/> Asphalt	<input type="checkbox"/> Erosion Control	<input checked="" type="checkbox"/> Sidewalks			
Bridge To Remain In Place:	Roadway Width	Length		Type		
New Bridge:	Roadway Width	Length		Type		
Box Culvert:	Span	Rise	Length		Type	
Culvert:	Diameter	Length			Type	
Bridges and Culverts Sized	<input type="checkbox"/> Yes <input checked="" type="checkbox"/> N/A <input type="checkbox"/> Hydraulic Analysis Pending					
OTHER CONSTRUCTION FEATURES: <p style="text-align: center;">Federal Funds Purchase Program</p> <p style="text-align: center;">Assessments</p>						
ESTIMATED COST (In Thousands) *OPTIONAL	*COUNTY	*CITY	*STATE	*FEDERAL	*OTHER	TOTAL
		2,650				2,650
PROJECT LENGTH (Nearest Tenth, State Unit of Measure) 0.5 Miles				Project No.: M211(353)		
Signature:			Title: City Engineer		Date:	

BOARD OF PUBLIC ROADS CLASSIFICATIONS AND STANDARDS
FORM 7 ONE-AND SIX-YEAR PLAN
HIGHWAY OR STREET IMPROVEMENT PROJECT

County PLATTE	City: COLUMBUS	Village:				
Location Description: <p style="text-align: center;">Downtown Evaluation UPRR Separation Study</p>						
EXISTING SURFACE TYPE AND STRUCTURES: (Such As Dirt, Gravel, Asphalt, Concrete, Culvert Or Bridge) <p style="text-align: center;">At grade crossings at 23rd Avenue and 26th Avenue</p>						
Average Daily Traffic: 2022 = <u>NA</u> 0 2042 = <u>NA</u>	Classification Type: (As Shown On Functional Classification Map)					
Proposed Improvement						
Design Standard Number: Municipal	Surfacing Concrete	Thickness 6"				
		Width 33'				
<input type="checkbox"/> Grading <input type="checkbox"/> Concrete <input type="checkbox"/> Right Of Way <input type="checkbox"/> Lighting <input type="checkbox"/> Aggregate <input type="checkbox"/> Curb & Gutter <input type="checkbox"/> Utility Adjustments <input checked="" type="checkbox"/> Study <input type="checkbox"/> Armor Coat <input type="checkbox"/> Drainage Structures <input type="checkbox"/> Fencing <input type="checkbox"/> Asphalt <input type="checkbox"/> Erosion Control <input type="checkbox"/> Sidewalks						
Bridge To Remain In Place:	Roadway Width	Length	Type			
New Bridge:	Roadway Width	Length	Type			
Box Culvert:	Span	Rise	Length	Type		
Culvert:	Diameter	Length	Type			
Bridges and Culverts Sized	<input type="checkbox"/> Yes <input checked="" type="checkbox"/> N/A <input type="checkbox"/> Hydraulic Analysis Pending					
OTHER CONSTRUCTION FEATURES: <p style="text-align: center;">UPRR Tracks</p>						
ESTIMATED COST (In Thousands) *OPTIONAL	*COUNTY	*CITY	*STATE	*FEDERAL	*OTHER	TOTAL
		275				275
PROJECT LENGTH (Nearest Tenth, State Unit of Measure)				Project No.:		
				M211(355)		
Signature:				Title: City Engineer		Date:

BOARD OF PUBLIC ROADS CLASSIFICATIONS AND STANDARDS
FORM 7 ONE-AND SIX-YEAR PLAN
HIGHWAY OR STREET IMPROVEMENT PROJECT

County PLATTE	City: COLUMBUS	Village:				
Location Description: <p style="text-align: center;">48th Avenue</p> <p style="text-align: center;">Howard Boulevard to 27th Street and 34th Street to 38th Street</p>						
EXISTING SURFACE TYPE AND STRUCTURES: (Such As Dirt, Gravel, Asphalt, Concrete, Culvert Or Bridge) <p style="text-align: center;">Concrete</p>						
Average Daily Traffic: 2022 = <u>6,900</u> 0 2042 = <u>9,800</u>	Classification Type: (As Shown On Functional Classification Map) <p style="text-align: center;">Local</p>					
Proposed Improvement						
Design Standard Number: Municipal	Surfacing Concrete	Thickness 9"				
		Width 33'				
<input checked="" type="checkbox"/> Grading <input checked="" type="checkbox"/> Concrete <input type="checkbox"/> Right Of Way <input type="checkbox"/> Lighting <input type="checkbox"/> Aggregate <input checked="" type="checkbox"/> Curb & Gutter <input checked="" type="checkbox"/> Utility Adjustments <input type="checkbox"/> Study <input type="checkbox"/> Armor Coat <input checked="" type="checkbox"/> Drainage Structures <input type="checkbox"/> Fencing <input type="checkbox"/> Asphalt <input type="checkbox"/> Erosion Control <input checked="" type="checkbox"/> Sidewalks						
Bridge To Remain In Place:	Roadway Width	Length	Type			
New Bridge:	Roadway Width	Length	Type			
Box Culvert:	Span	Rise	Length Type			
Culvert:	Diameter	Length	Type			
Bridges and Culverts Sized	<input type="checkbox"/> Yes <input checked="" type="checkbox"/> N/A <input type="checkbox"/> Hydraulic Analysis Pending					
OTHER CONSTRUCTION FEATURES: <p style="text-align: center;">Reconstruct driving lanes & add ADA ramps</p>						
ESTIMATED COST (In Thousands) *OPTIONAL	*COUNTY	*CITY	*STATE	*FEDERAL	*OTHER	TOTAL
		950				950
PROJECT LENGTH (Nearest Tenth, State Unit of Measure) 0.3 Miles				Project No.: M211(356)		
Signature:				Title: City Engineer		Date:

BOARD OF PUBLIC ROADS CLASSIFICATIONS AND STANDARDS
FORM 7 ONE-AND SIX-YEAR PLAN
HIGHWAY OR STREET IMPROVEMENT PROJECT

County PLATTE	City: COLUMBUS	Village:				
Location Description: <div style="text-align: center;">63rd Avenue</div> <hr/> <div style="text-align: center;">Howard Boulevard to Lost Creek Parkway (Private Development)</div>						
EXISTING SURFACE TYPE AND STRUCTURES: (Such As Dirt, Gravel, Asphalt, Concrete, Culvert Or Bridge) <div style="text-align: center;">Gravel</div>						
Average Daily Traffic: 2022 = _____ 0 2042 = _____		Classification Type: (As Shown On Functional Classification Map) <div style="text-align: center;">Collector</div>				
Proposed Improvement						
Design Standard Number: Municipal		Surfacing Concrete	Thickness 9"	Width 41'		
<input checked="" type="checkbox"/> Grading	<input checked="" type="checkbox"/> Concrete	<input type="checkbox"/> Right Of Way	<input checked="" type="checkbox"/> Lighting			
<input type="checkbox"/> Aggregate	<input checked="" type="checkbox"/> Curb & Gutter	<input checked="" type="checkbox"/> Utility Adjustments		<input type="checkbox"/> Study		
<input type="checkbox"/> Armor Coat	<input checked="" type="checkbox"/> Drainage Structures	<input type="checkbox"/> Fencing				
<input type="checkbox"/> Asphalt	<input type="checkbox"/> Erosion Control	<input checked="" type="checkbox"/> Sidewalks				
Bridge To Remain In Place:	Roadway Width	Length		Type		
New Bridge:	Roadway Width	Length		Type		
Box Culvert:	Span	Rise	Length		Type	
Culvert:	Diameter	Length			Type	
Bridges and Culverts Sized	<input type="checkbox"/> Yes <input checked="" type="checkbox"/> N/A <input type="checkbox"/> Hydraulic Analysis Pending					
OTHER CONSTRUCTION FEATURES: <hr/> <hr/> <hr/>						
ESTIMATED COST (In Thousands) *OPTIONAL	*COUNTY	*CITY	*STATE	*FEDERAL	*OTHER	TOTAL
					2,500	2,500
PROJECT LENGTH (Nearest Tenth, State Unit of Measure) 0.5 Miles				Project No.: M211(357)		
Signature:			Title: City Engineer		Date:	

BOARD OF PUBLIC ROADS CLASSIFICATIONS AND STANDARDS
FORM 7 ONE-AND SIX-YEAR PLAN
HIGHWAY OR STREET IMPROVEMENT PROJECT

County PLATTE	City: COLUMBUS	Village:				
Location Description: <p style="text-align: center;">East Park / 17th Street from 16th to 18th Avenues</p> <p style="text-align: center;">Storm Sewer</p>						
EXISTING SURFACE TYPE AND STRUCTURES: (Such As Dirt, Gravel, Asphalt, Concrete, Culvert Or Bridge) <p style="text-align: center;">Concrete</p>						
Average Daily Traffic: 2022 = <u>NA</u> 0 2042 = <u>NA</u>	Classification Type: (As Shown On Functional Classification Map) <p style="text-align: center;">Collector</p>					
Proposed Improvement						
Design Standard Number: Municipal	Surfacing	Thickness				
<input type="checkbox"/> Grading <input type="checkbox"/> Concrete <input type="checkbox"/> Right Of Way <input type="checkbox"/> Lighting <input type="checkbox"/> Aggregate <input type="checkbox"/> Curb & Gutter <input type="checkbox"/> Utility Adjustments <input type="checkbox"/> Study <input type="checkbox"/> Armor Coat <input checked="" type="checkbox"/> Drainage Structures <input type="checkbox"/> Fencing <input type="checkbox"/> Asphalt <input type="checkbox"/> Erosion Control <input type="checkbox"/> Sidewalks						
Bridge To Remain In Place:	Roadway Width	Length	Type			
New Bridge:	Roadway Width	Length	Type			
Box Culvert:	Span	Rise	Length	Type		
Culvert:	Diameter	Length	Type			
Bridges and Culverts Sized	<input type="checkbox"/> Yes <input checked="" type="checkbox"/> N/A <input type="checkbox"/> Hydraulic Analysis Pending					
OTHER CONSTRUCTION FEATURES: <p style="text-align: center;">Storm Sewer improvements from East Park Rain Garden to 17th Street to 16th Avenue</p>						
ESTIMATED COST (In Thousands) *OPTIONAL	*COUNTY	*CITY	*STATE	*FEDERAL	*OTHER	TOTAL
		350				350
PROJECT LENGTH (Nearest Tenth, State Unit of Measure) 0.2 Miles				Project No.: M211(358)		
Signature:				Title: City Engineer		Date:

BOARD OF PUBLIC ROADS CLASSIFICATIONS AND STANDARDS
FORM 7 ONE-AND SIX-YEAR PLAN
HIGHWAY OR STREET IMPROVEMENT PROJECT

County PLATTE	City: COLUMBUS	Village:				
Location Description: <p style="text-align: center;">Signal Upgrades 27th Street & 33rd Avenue</p>						
EXISTING SURFACE TYPE AND STRUCTURES: (Such As Dirt, Gravel, Asphalt, Concrete, Culvert Or Bridge)						
Average Daily Traffic: 2022 = <u>9,000</u> 0 2042 = <u>11,500</u>	Classification Type: (As Shown On Functional Classification Map) <p style="text-align: center;">Arterial</p>					
Proposed Improvement						
Design Standard Number: Municipal	Surfacing	Thickness				
<input type="checkbox"/> Grading <input type="checkbox"/> Concrete <input type="checkbox"/> Right Of Way <input type="checkbox"/> Lighting <input type="checkbox"/> Aggregate <input type="checkbox"/> Curb & Gutter <input type="checkbox"/> Utility Adjustments <input type="checkbox"/> Study <input type="checkbox"/> Armor Coat <input type="checkbox"/> Drainage Structures <input type="checkbox"/> Fencing <input checked="" type="checkbox"/> Traffic Signal <input type="checkbox"/> Asphalt <input type="checkbox"/> Erosion Control <input type="checkbox"/> Sidewalks						
Bridge To Remain In Place:	Roadway Width	Length	Type			
New Bridge:	Roadway Width	Length	Type			
Box Culvert:	Span	Rise	Length	Type		
Culvert:	Diameter	Length	Type			
Bridges and Culverts Sized	<input type="checkbox"/> Yes <input checked="" type="checkbox"/> N/A <input type="checkbox"/> Hydraulic Analysis Pending					
OTHER CONSTRUCTION FEATURES: <p style="text-align: center;">Existing Signal Upgrades</p>						
ESTIMATED COST (In Thousands) *OPTIONAL	*COUNTY	*CITY	*STATE	*FEDERAL	*OTHER	TOTAL
		100				100
PROJECT LENGTH (Nearest Tenth, State Unit of Measure)				Project No.:		
				M211(359)		
Signature:				Title:		Date:
				City Engineer		

BOARD OF PUBLIC ROADS CLASSIFICATIONS AND STANDARDS
FORM 7 ONE-AND SIX-YEAR PLAN
HIGHWAY OR STREET IMPROVEMENT PROJECT

County PLATTE	City: COLUMBUS	Village:
Location Description: <p style="text-align: center;">Signal Upgrades Wilderness Road and Lost Creek Parkway</p>		
EXISTING SURFACE TYPE AND STRUCTURES: (Such As Dirt, Gravel, Asphalt, Concrete, Culvert Or Bridge)		
Average Daily Traffic: 2022 = <u>7,000</u> 0 2042 = <u>10,200</u>		Classification Type: (As Shown On Functional Classification Map) Major Arterial
Proposed Improvement		
Design Standard Number: Municipal	Surfacing	Thickness Width
<input type="checkbox"/> Grading <input type="checkbox"/> Concrete <input type="checkbox"/> Right Of Way <input type="checkbox"/> Lighting <input type="checkbox"/> Aggregate <input type="checkbox"/> Curb & Gutter <input type="checkbox"/> Utility Adjustments <input type="checkbox"/> Study <input type="checkbox"/> Armor Coat <input type="checkbox"/> Drainage Structures <input type="checkbox"/> Fencing <input checked="" type="checkbox"/> Traffic Signal <input type="checkbox"/> Asphalt <input type="checkbox"/> Erosion Control <input type="checkbox"/> Sidewalks		
Bridge To Remain In Place:	Roadway Width	Length Type
New Bridge:	Roadway Width	Length Type
Box Culvert:	Span	Rise Length Type
Culvert:	Diameter	Length Type
Bridges and Culverts Sized	<input type="checkbox"/> Yes <input checked="" type="checkbox"/> N/A <input type="checkbox"/> Hydraulic Analysis Pending	
OTHER CONSTRUCTION FEATURES: <p style="text-align: center;">Existing Signal Upgrades</p>		
ESTIMATED COST (In Thousands) *OPTIONAL	*COUNTY	*CITY 100
	*STATE	*FEDERAL
	*OTHER	TOTAL 100
PROJECT LENGTH (Nearest Tenth, State Unit of Measure)		Project No.: M211(360)
Signature:		Title: City Engineer
		Date:

BOARD OF PUBLIC ROADS CLASSIFICATIONS AND STANDARDS
FORM 7 ONE-AND SIX-YEAR PLAN
HIGHWAY OR STREET IMPROVEMENT PROJECT

County PLATTE	City: COLUMBUS	Village:
Location Description: <p style="text-align: center;">Private Development</p> <p style="text-align: center;">Meadow Ridge Office Park Addition – 43rd Street, from 48th Avenue west 340'</p>		
EXISTING SURFACE TYPE AND STRUCTURES: (Such As Dirt, Gravel, Asphalt, Concrete, Culvert Or Bridge) <p style="text-align: center;">Undeveloped Land</p>		
Average Daily Traffic: 2022 = <u>100</u> 0 2042 = <u>250</u>	Classification Type: (As Shown On Functional Classification Map) <p style="text-align: center;">Local</p>	
Proposed Improvement		
Design Standard Number: <p style="text-align: center;">Municipal</p>	Surfacing <p style="text-align: center;">Concrete</p>	Thickness <p style="text-align: center;">6"</p>
		Width <p style="text-align: center;">33'</p>
<input checked="" type="checkbox"/> Grading	<input checked="" type="checkbox"/> Concrete	<input type="checkbox"/> Right Of Way
<input type="checkbox"/> Aggregate	<input checked="" type="checkbox"/> Curb & Gutter	<input type="checkbox"/> Utility Adjustments
<input type="checkbox"/> Armor Coat	<input checked="" type="checkbox"/> Drainage Structures	<input type="checkbox"/> Fencing
<input type="checkbox"/> Asphalt	<input type="checkbox"/> Erosion Control	<input checked="" type="checkbox"/> Sidewalks
		<input checked="" type="checkbox"/> Lighting
		<input type="checkbox"/> Study
Bridge To Remain In Place:	Roadway Width	Length
		Type
New Bridge:	Roadway Width	Length
		Type
Box Culvert:	Span	Rise
		Length
		Type
Culvert:	Diameter	Length
		Type
Bridges and Culverts Sized	<input type="checkbox"/> Yes <input checked="" type="checkbox"/> N/A <input type="checkbox"/> Hydraulic Analysis Pending	
OTHER CONSTRUCTION FEATURES:		
ESTIMATED COST (In Thousands) *OPTIONAL	*COUNTY	*CITY
		*STATE
		*FEDERAL
		*OTHER
		150
		TOTAL
		150
PROJECT LENGTH (Nearest Tenth, State Unit of Measure) <p style="text-align: center;">0.1 Miles</p>		Project No.: <p style="text-align: center;">M211(361)</p>
Signature:		Title: City Engineer
		Date:

BOARD OF PUBLIC ROADS CLASSIFICATIONS AND STANDARDS
FORM 7 ONE-AND SIX-YEAR PLAN
HIGHWAY OR STREET IMPROVEMENT PROJECT

County PLATTE	City: COLUMBUS	Village:				
Location Description: <p style="text-align: center;">Private Development – Centennial Park 8th Addition</p> <p style="text-align: center;">2nd Street from 3rd to 7th Avenues; 5th Avenue from 2nd Street north and south 200' and</p> <p style="text-align: center;">6th Avenue from 2nd Street south 200'</p>						
EXISTING SURFACE TYPE AND STRUCTURES: (Such As Dirt, Gravel, Asphalt, Concrete, Culvert Or Bridge) <p style="text-align: center;">Undeveloped Land</p>						
Average Daily Traffic: 2022 = <u>200</u> 0 2042 = <u>400</u>	Classification Type: (As Shown On Functional Classification Map) <p style="text-align: center;">Local</p>					
Proposed Improvement						
Design Standard Number: Municipal	Surfacing Concrete	Thickness 6"				
		Width 33'				
<input checked="" type="checkbox"/> Grading <input checked="" type="checkbox"/> Concrete <input type="checkbox"/> Right Of Way <input checked="" type="checkbox"/> Lighting <input type="checkbox"/> Aggregate <input checked="" type="checkbox"/> Curb & Gutter <input type="checkbox"/> Utility Adjustments <input type="checkbox"/> Study <input type="checkbox"/> Armor Coat <input checked="" type="checkbox"/> Drainage Structures <input type="checkbox"/> Fencing <input type="checkbox"/> Asphalt <input type="checkbox"/> Erosion Control <input checked="" type="checkbox"/> Sidewalks						
Bridge To Remain In Place:	Roadway Width	Length	Type			
New Bridge:	Roadway Width	Length	Type			
Box Culvert:	Span	Rise	Length			
Culvert:	Diameter	Length	Type			
Bridges and Culverts Sized	<input type="checkbox"/> Yes <input checked="" type="checkbox"/> N/A <input type="checkbox"/> Hydraulic Analysis Pending					
OTHER CONSTRUCTION FEATURES: <p>.....</p> <p>.....</p> <p>.....</p>						
ESTIMATED COST (In Thousands) *OPTIONAL	*COUNTY	*CITY	*STATE	*FEDERAL	*OTHER	TOTAL
					350	350
PROJECT LENGTH (Nearest Tenth, State Unit of Measure) 0.4 Miles				Project No.: M211(362)		
Signature:				Title: City Engineer		Date:

BOARD OF PUBLIC ROADS CLASSIFICATIONS AND STANDARDS
FORM 7 ONE-AND SIX-YEAR PLAN
HIGHWAY OR STREET IMPROVEMENT PROJECT

County PLATTE	City: COLUMBUS	Village:				
Location Description: <p style="text-align: center;">South Thoroughfare</p> <p style="text-align: center;">8th Street Intersection Improvements</p> <p style="text-align: center;">18th, 23rd, and 26th Avenues</p>						
EXISTING SURFACE TYPE AND STRUCTURES: (Such As Dirt, Gravel, Asphalt, Concrete, Culvert Or Bridge)						
Average Daily Traffic: 2022 = <u>1500</u> 0 2042 = <u>2100</u>		Classification Type: (As Shown On Functional Classification Map) Arterial				
Proposed Improvement						
Design Standard Number: Municipal		Surfacing Concrete	Thickness 9"	Width 41'		
<input checked="" type="checkbox"/> Grading	<input checked="" type="checkbox"/> Concrete	<input type="checkbox"/> Right Of Way	<input checked="" type="checkbox"/> Lighting			
<input type="checkbox"/> Aggregate	<input checked="" type="checkbox"/> Curb & Gutter	<input type="checkbox"/> Utility Adjustments	<input checked="" type="checkbox"/> Trails			
<input type="checkbox"/> Armor Coat	<input checked="" type="checkbox"/> Drainage Structures	<input type="checkbox"/> Fencing				
<input type="checkbox"/> Asphalt	<input type="checkbox"/> Erosion Control	<input checked="" type="checkbox"/> Sidewalks				
Bridge To Remain In Place:	Roadway Width	Length	Type			
New Bridge:	Roadway Width	Length	Type			
Box Culvert:	Span	Rise	Length	Type		
Culvert:	Diameter	Length	Type			
Bridges and Culverts Sized	<input type="checkbox"/> Yes <input checked="" type="checkbox"/> N/A <input type="checkbox"/> Hydraulic Analysis Pending					
OTHER CONSTRUCTION FEATURES: <p style="text-align: center;">Design Only 2022/2023</p> <p style="text-align: center;">Residential Type Roundabouts</p> <p style="text-align: center;">Trails 8th Street to 18th Avenue</p>						
ESTIMATED COST (In Thousands) *OPTIONAL	*COUNTY	*CITY	*STATE	*FEDERAL	*OTHER	TOTAL
		300				300
PROJECT LENGTH (Nearest Tenth, State Unit of Measure) 0.3 Miles				Project No.: M211(363)		
Signature:				Title: City Engineer		Date:

Board of Public Roads Classifications and Standards
Form 9 Summary of Six-Year Plan

Six-Year Period Ending: December 31, 2028

Sheet 1 of 2

County: PLATTE		City: COLUMBUS		Village:	
PRIORITY NUMBER	PROJECT NUMBER	LENGTH (Nearest Tenth)	UNIT OF MEASURE	ESTIMATED COST (Thousands)	REMARKS
1	M211(316)	1.0	Miles	500	Powerhouse Park Trail Phase 1
2	M211(257)	0.8	Miles	3,600	E 14 Ave. N to City Limits
3	M211 (325)	2.7	Miles	26,800	23 St. 32 Ave. to E 11 Ave Habitat Drive
4	M211(273)	0.6	Miles	2,300	23 St. Howard Blvd to 54 Ave
5	M211(356)	0.3	Miles	950	48 Ave Howard to 27 St & 34-38 St
6	M211(355)			275	Downtown Eval. UPRR Sep Study
7	M211 (357)	0.5	Miles	2,500	63 Ave howard Blvd to Lost Creek Pkwy
8	M211 (352)	0.4	Miles	2,000	23 Ave/Shady Lake 54 Ave/WCI
9	M211 (353)	0.5	Miles	2,100	48 Ave 23 St. S 2440'
10	M211 (358)	0.2	Miles	350	East Park/17 St. from 16-18 Ave S
11	M211 (359)	-	-	100	Signal UG 27 St - 33 Ave
12	M211 (360)	-	-	100	Signal UG Wilderness & ICP
13	M211 (361)	0.1	Miles	150	Meadow Ridge Office Park Add
14	M211 (362)	0.4	Miles	350	Centennial Pak 8 th Addition
15	M211 (363)	0.3	Miles	300	South Thoroughfare
16	M211(346)	0.1	Miles	125	Riverside 3 rd Addition
17	M211(290)	-	-	1,000	Ag Park Drainage
18	M211(272)	1.0	Miles	2,700	Howard Blvd. 33 Ave to 23 St
19	M211(220)	1.6	Miles	2,500	10 Ave Lovers Lane to 5 St
20	M211(289)	0.5	Miles	180	Deerfield Park 2 nd Addition
21	M211(44)	-	-	10,300	Storm Sewer East Park/11 St
22	M211(288)	0.3	Miles	2,000	48 Ave. Park to 11 St 11 St 41-48 Ave
23	M211(39)	0.3	Miles	110	Curb & Gutter 6 St 24-26 Ave
24	M211(36)	0.3	Miles	290	14,15,& 20 Ave between 11 & 12St
25	M211(264)	0.3	Miles	820	26 Ave from 27-32 St
Signature:			Title: City Engineer		Date:

Board of Public Roads Classifications and Standards
Form 9 Summary of Six-Year Plan
Six-Year Period Ending: December 31, 2028

Sheet 2 of 2

County: PLATTE		City: COLUMBUS		Village:	
PRIORITY NUMBER	PROJECT NUMBER	LENGTH (Nearest Tenth)	UNIT OF MEASURE	ESTIMATED COST (Thousands)	REMARKS
26	M211(112)	0.3	Miles	260	Crumley Subdivision
27	M211(114)	0.8	Miles	1,100	Sand Subdivision
28	M211(57)			110	Storm Sewer Impr 30 Ave 22-23 St
29	M211(190)	1.4	Miles	2,500	Johannes Addition
30	M211(64)	0.2	Miles	250	Oida Addition
31	M211 (111)	0.3	Miles	360	Gates 1&2 Subdivisions
32	M211 (157)	0.3	Miles	340	26 Ave from 3-5 St 25 Ave 3-5 St
33	M211 (324)	1.0	Miles	500	Power House Trail Phase 2
34	M211 (62)	0.3	Miles	350	Air Vista Drive
35	M211 (35)	0.3	Miles	290	12 St. from 12-16 St & 18-19 Ave
36	M211 (118)	0.4	Miles	440	West Parkway 1 & 2 Subdivision
37	M211 (71)	0.1	Miles	115	22 & 25 Ave. between 6&7 St
38	M211 (301)	0.3	Miles	370	21 Ave from 1 to 1/2 Blk N on 3 St
39	M211 (302)	0.4	Miles	525	2-4 St. from 16-17 Ave/14-15 Ave
Signature:			Title: City Engineer		Date:

Board of Public Roads Classifications and Standards
Form 11 Report of Previous Year
Highway or Street Improvement

Year Ending: December 31, 2022

Sheet 1 of 1

County: PLATTE		City: COLUMBUS			Village:	
PROJECT NUMBER	LENGTH (Nearest Tenth)	UNIT OF MEASURE	PROJECTED COST (Thousands)	CONTRACT PROJECT	OWN FORCES	DATE COMPLETED (Actual or Estimated)
M211(247)	0.1	Miles	150	X		8/22
M211(257)	0.8	Miles	3,600	X		Continues
M211 (273)	0.6	Miles	2,400	X		Continues
M211(316)	1.0	Miles	500	X		Continues
M211 (325)	2.7	Miles	32,000	X		Continues
M211 (338)	0.2	Miles	350	X		1/22
M211 (339)	0.6	Miles	1,070	X		9/21
M211 (364)	0.1	Miles	100	X		7/22
M211 (365)	0.1	Miles	160	X		8/22
M211 (346)	0.1	Miles	125	X		Continues
M211 (347)	0.3	Miles	300	X		6/22
M211 (348)	0.2	Miles	250	X		7/22
M211 (349)	0.2	Miles	250	X		7/22
M211 (350)	0.2	Miles	1,200	X		8/22
M211 (351)	0.5	Miles	1,200	X		8/22
M211 (354)	-	-	200	X		3/22
M211 (355)	-	-	275	X		Continues
M211 (366)	0.2	Miles	170	X		8/22
Signature:		Title: City Engineer			Date:	

Board Of Public Roads Classifications And Standards
FORM 10 Notification of Revision of One-Year Plan

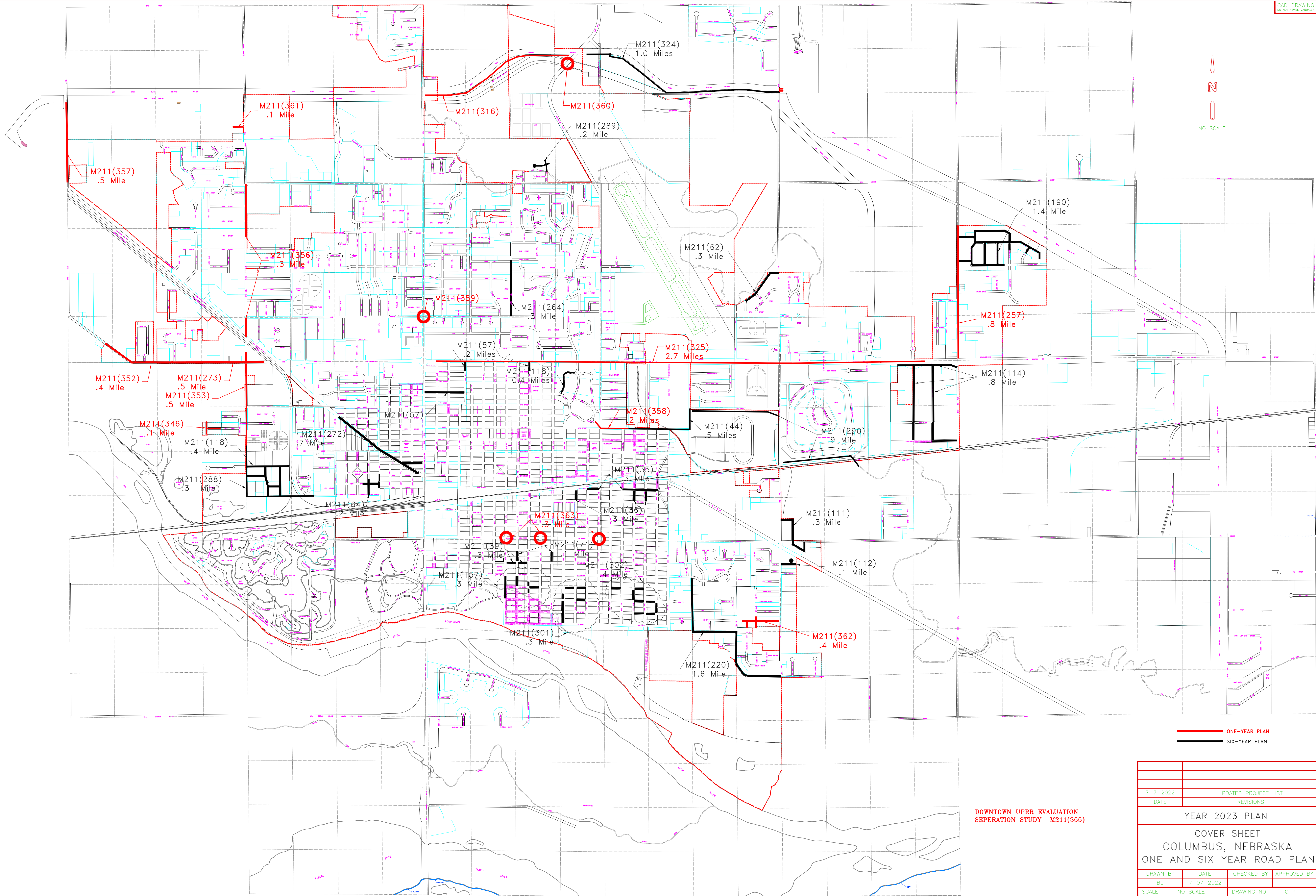
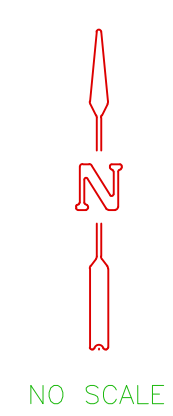
County PLATTE	City: COLUMBUS	Village:
REASON FOR REVISION: <p style="text-align: center;">Private developer subdivision: Frontier Park 2nd Addition</p>		
LOCATION DESCRIPTION <p style="text-align: center;">Frontier Park 2nd Addition</p>		
EXISTING SURFACE TYPE AND STRUCTURES: (Such As Dirt, Gravel, Asphalt, Concrete, Culvert Or Bridge) <p style="text-align: center;">Undeveloped Land</p>		
Average Daily Traffic: 2023 = <u>0</u> , 2043 = <u>200</u>	Classification Type: (As Shown On Functional Classification Map) <p style="text-align: center;">Local</p>	
Proposed Improvement		
Design Standard Number: Municipal	Surfacing	Thickness 6" Width 33'
<input checked="" type="checkbox"/> Grading	<input checked="" type="checkbox"/> Concrete	<input type="checkbox"/> Right Of Way
<input type="checkbox"/> Aggregate	<input checked="" type="checkbox"/> Curb & Gutter	<input checked="" type="checkbox"/> Lighting
<input type="checkbox"/> Armor Coat	<input checked="" type="checkbox"/> Drainage Structures	<input type="checkbox"/> Utility Adjustments
<input type="checkbox"/> Asphalt	<input type="checkbox"/> Erosion Control	<input type="checkbox"/> Fencing
		<input type="checkbox"/> Sidewalks
Bridge To Remain In Place:	Roadway Width	Length Type
New Bridge:	Roadway Width	Length Type
Box Culvert:	Span	Rise Length Type
Culvert:	Diameter	Length Type
Bridges and Culverts Sized	<input type="checkbox"/> Yes <input checked="" type="checkbox"/> N/A <input type="checkbox"/> Hydraulic Analysis Pending	
OTHER CONSTRUCTION FEATURES: <p style="text-align: center;">Private development. Roads turned over to city.</p>		
ESTIMATED COST (In Thousands) *OPTIONAL	*COUNTY	*CITY
		*STATE
		*FEDERAL
		*OTHER
		100
		TOTAL
		100
PROJECT LENGTH (Nearest Tenth, State Unit of Measure) <p style="text-align: center;">0.1 Miles</p>	Project No.: <p style="text-align: center;">M211 (364)</p>	
Signature:	Title: City Engineer	Date:

Board Of Public Roads Classifications And Standards
FORM 10 Notification of Revision of One-Year Plan

County PLATTE	City: COLUMBUS	Village:
REASON FOR REVISION: <p style="text-align: center;">Private developer subdivision: Park Place 9th Addition</p>		
LOCATION DESCRIPTION <p style="text-align: center;">Park Place 9th Addition</p>		
EXISTING SURFACE TYPE AND STRUCTURES: (Such As Dirt, Gravel, Asphalt, Concrete, Culvert Or Bridge) <p style="text-align: center;">Undeveloped Land</p>		
Average Daily Traffic: 2023 = <u>0</u> , 2043 = <u>200</u>	Classification Type: (As Shown On Functional Classification Map) <p style="text-align: center;">Local</p>	
Proposed Improvement		
Design Standard Number: Municipal	Surfacing	Thickness 6" Width 33'
<input checked="" type="checkbox"/> Grading	<input checked="" type="checkbox"/> Concrete	<input type="checkbox"/> Right Of Way
<input type="checkbox"/> Aggregate	<input checked="" type="checkbox"/> Curb & Gutter	<input checked="" type="checkbox"/> Lighting
<input type="checkbox"/> Armor Coat	<input checked="" type="checkbox"/> Drainage Structures	<input type="checkbox"/> Utility Adjustments
<input type="checkbox"/> Asphalt	<input type="checkbox"/> Erosion Control	<input type="checkbox"/> Fencing
		<input type="checkbox"/> Sidewalks
Bridge To Remain In Place:	Roadway Width	Length Type
New Bridge:	Roadway Width	Length Type
Box Culvert:	Span	Rise Length Type
Culvert:	Diameter	Length Type
Bridges and Culverts Sized	<input type="checkbox"/> Yes <input checked="" type="checkbox"/> N/A <input type="checkbox"/> Hydraulic Analysis Pending	
OTHER CONSTRUCTION FEATURES: <p style="text-align: center;">Private development. Roads turned over to city.</p>		
ESTIMATED COST (In Thousands) *OPTIONAL	*COUNTY	*CITY
		*STATE
		*FEDERAL
		*OTHER
		160
		TOTAL
		160
PROJECT LENGTH (Nearest Tenth, State Unit of Measure) <p style="text-align: center;">0.1 Miles</p>	Project No.: <p style="text-align: center;">M211 (365)</p>	
Signature:	Title: City Engineer	Date:

Board Of Public Roads Classifications And Standards
FORM 10 Notification of Revision of One-Year Plan

County PLATTE	City: COLUMBUS	Village:
REASON FOR REVISION: <p style="text-align: center;">Private developer subdivision: Park Place 10th Addition</p>		
LOCATION DESCRIPTION <p style="text-align: center;">Park Place 10th Addition</p>		
EXISTING SURFACE TYPE AND STRUCTURES: (Such As Dirt, Gravel, Asphalt, Concrete, Culvert Or Bridge) <p style="text-align: center;">Undeveloped Land</p>		
Average Daily Traffic: 2023 = <u>0</u> , 2043 = <u>200</u>	Classification Type: (As Shown On Functional Classification Map) <p style="text-align: center;">Local</p>	
Proposed Improvement		
Design Standard Number: Municipal	Surfacing	Thickness 6" Width 33'
<input checked="" type="checkbox"/> Grading	<input checked="" type="checkbox"/> Concrete	<input type="checkbox"/> Right Of Way
<input type="checkbox"/> Aggregate	<input checked="" type="checkbox"/> Curb & Gutter	<input checked="" type="checkbox"/> Lighting
<input type="checkbox"/> Armor Coat	<input checked="" type="checkbox"/> Drainage Structures	<input type="checkbox"/> Utility Adjustments
<input type="checkbox"/> Asphalt	<input type="checkbox"/> Erosion Control	<input type="checkbox"/> Fencing
		<input type="checkbox"/> Sidewalks
Bridge To Remain In Place:	Roadway Width	Length Type
New Bridge:	Roadway Width	Length Type
Box Culvert:	Span	Rise Length Type
Culvert:	Diameter	Length Type
Bridges and Culverts Sized	<input type="checkbox"/> Yes <input checked="" type="checkbox"/> N/A <input type="checkbox"/> Hydraulic Analysis Pending	
OTHER CONSTRUCTION FEATURES: <p style="text-align: center;">Private development. Roads turned over to city.</p>		
ESTIMATED COST (In Thousands) *OPTIONAL	*COUNTY	*CITY
		*STATE
		*FEDERAL
		*OTHER
		170
		TOTAL
		170
PROJECT LENGTH (Nearest Tenth, State Unit of Measure) <p style="text-align: center;">0.2 Miles</p>	Project No.: <p style="text-align: center;">M211 (366)</p>	
Signature:	Title: City Engineer	Date:



— ONE-YEAR PLAN
— SIX-YEAR PLAN

DOWNTOWN UPRR EVALUATION
SEPERATION STUDY M211(355)

7-7-2022	UPDATED PROJECT LIST		
DATE	REVISIONS		
YEAR 2023 PLAN			
COVER SHEET COLUMBUS, NEBRASKA ONE AND SIX YEAR ROAD PLAN			
DRAWN BY BLU	DATE 7-07-2022	CHECKED BY	APPROVED BY
SCALE: NO SCALE	DRAWING NO.	CITY	

5. **Request for Proposals to purchase and renovate library building at 2419 14 Street.**



The City of Columbus

RESPONSIBLE • RESPONSIVE • REPUTABLE

Administration Office (402) 562-4232

Fax (402) 563-1380

memorandum

DATE: June 26, 2022
 TO: Tara Vasicek
 FROM: Jean Van Iperen, Planning and Economic Development Coordinator
 RE: Existing Library Building RFP

With the construction of the new Community Building in downtown Columbus, the City needs to look at the future of the existing library facility. With no immediate need for the facility, it should be listed as surplus property and sold for future development in the area. An RFP has been prepared for the sale of the building using comps from past sales of property in the downtown area. Based on those comps and the condition of the building a proposed starting price of \$192,000 has been included in the RFP. By making the RFP available to future investors now the City allows them time to prep for the development of the building eliminating a lot of “vacant” building time. The City has already had a few inquiries about the future use of the space, so interest in the building exists.

The price of the starting bid for the building was based on these factors: Library Building at 1369 24 Ave 132x132 Lot Built in 1947 and 1971 Approximately 9,200 sq. ft.

2506 13 Street Built in 1900 22x132 lot, 3540 sq. ft. Sold 4/22 for \$75,000 or \$21.18644/sq. ft.

2504 13 Street Built in 1890 22 x 132 lot, 3456 sq. ft. Sold 3/22 for \$65,000 or \$18.80787 sq. ft.

2422 13 Street Built in 1965 80x132 lot, 11,421 sq. ft. Sold 12/19 for \$260,000 or \$22.76508 sq. ft.

2517 13 Street Built in 1900 60x22 lot, 2,640 sq. ft. Sold 3/19 for \$90,000 or \$34.0909

2415 13 Street Built in 1982 44 x 132 lot, 4,647 sq. ft. Sold 1/22 for \$365,000 or \$78.545 sq. ft.

1371 26 Avenue Built in 1950 66 x 114 lot, 4,400 sq. ft. Sold 4/22 for \$350,000 or \$82.46936 sq. ft.

Due to the condition of the building and the repairs needed to the roof and AC – averaged the sale of the top three sales (buildings have similar repairs needed – last 3 buildings sales were excluded due to the updated condition of the facilities.) Average sq. ft. cost was \$20.919814. (9,200 sq. ft. x 20.919814 = \$192,462.28 – rounded down to \$192,000)

FISCAL IMPACT:

Based on the proposed starting bid price the City would receive \$192,000 or more in revenue for the facility.





CITY OF COLUMBUS

Request for
Proposals

710001372



REQUEST FOR PROPOSALS LIBRARY BUILDING

2419 14th St

starting Price :

\$192,000

FEATURES

- 3 levels
- Life safety updates
- Maintenance Records available
- Sold "As Is"

The City of Columbus (City) plans to select a proposal from interested parties (proposer) to purchase and develop a property located in Downtown Columbus.

The City is seeking proposals from individuals or businesses who will purchase and develop 2419 14th St. Legal description: Lots 3 and 4, Block 59, Original City of Columbus, Platte County, Nebraska. The property described here will not be needed by the City after the library moves to their new location, therefore the City would like to sell the property to be developed and eventually be an improvement of the Downtown area. A base bid has been set at \$192,000 (one hundred ninety-two thousand dollars) for the property.

The selected proposal will commit to a plan to develop the property into a vibrant, viable space. The ideal plan would include a project to attract visitors, customers and activity to the property and Downtown area.

Proposal

In order to facilitate review of proposals by the Selection Committee, the following information must be included in the proposal.

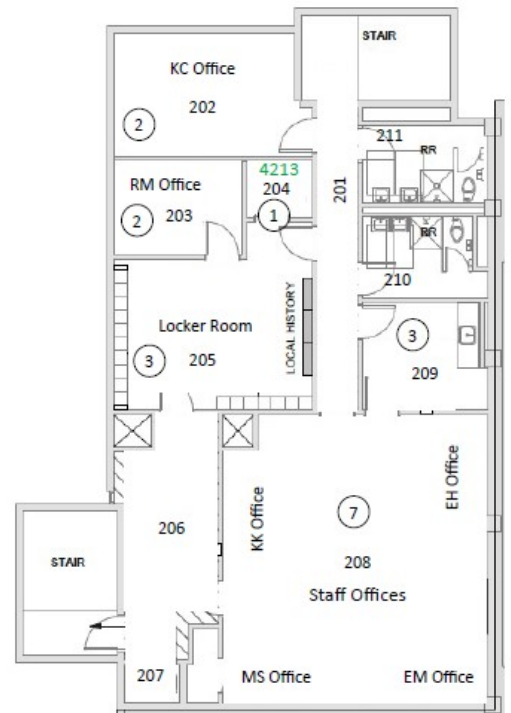
1. Detailed description of the project.
2. Listing of organization(s) who are included in the development. This should include the primary areas of responsibility of each organization.
3. Purchase Price. (Minimum of \$192,000) The offered price must be for the entire property and may not require any terms or warranties of the City.
4. Financing plan for the entire project and proof of funds.
5. Business Plan for the finished space.
6. Renovation Plans and estimate of cost.
7. A project schedule outlining the time line and estimated start and completion date.
8. A discussion of similar projects the organizations of your team have completed.

Selection Process

1. The City of Columbus reserves the right to select the proposer based on the submitted proposals or may select a short list of proposers and request additional information.
2. The City of Columbus reserves the right to interview the proposers if desired.
3. The Selection Committee will be the City Administrator, City Engineer, Chief Building Inspector, and two elected officials which are members of the Public Property Committee.
4. All submittals must be received in the office of the City Clerk at the address noted below by 4:30 p.m. on Monday, August 15, 2022. Proposers shall submit one (1) hard copy and one (1) digital format (thumb drive). Submittals shall be labeled:

Proposal 2419 14th Street
City of Columbus
Attn: City Clerk's Office
2424 14 Street
PO Box 1677
Columbus, NE 68602-1677

5. All discussions with the City shall be directed in writing to Jean Van Iperen, Planning and Economic Development, via email: jean.vaniperen@columbusne.us. Van Iperen may direct any questioning or contact with others.
6. The selected proposal notification is anticipated to be on or before Friday, August 19, 2022.
7. The City reserves the right to negotiate with the second best proposer if a mutually accepted agreement cannot be established with the first selected proposer.
8. This Request for Proposals does not commit the City of Columbus to sell the property reference in this RFP. The City of Columbus reserves the right to modify or cancel this Request of Proposals.



6. Adjournment.