

Projects Committee Meeting
Thursday, September 28, 2023 7:30 AM
Lower Platte North NRD Office
P.O. Box 126
Wahoo, NE 68066

1. UNFINISHED BUSINESS
2. JOINT WATER MANAGEMENT ADVISORY BOARD (JWMAB)
 - 2.A. East Fremont/Elkhorn Township Drainage - FEMA HMPG
A Notice of Intent to apply for federal grant funds was submitted to NEMA (Nebraska Emergency Management Agency). The federal grant announcement has yet to be published due to FEMA's (Federal Emergency Management Agency) financial issues.
 - 2.B. West Fremont - FEMA BRIC
A progress meeting occurred on September 14 at Fremont City Council Chambers. Structural and nonstructural alternatives were discussed. Coincident flow maps and rough costs area attached.
 - 2.C. Rawhide Creek Watershed - NRCS WFPO
A public open house was held on September 6th at the Fremont Extension office. A good turnout of approximately 40 showed up with good questions and feedback. The official summary document will be shared with projects committee once it is completed.
3. SHELL CREEK WATERSHED
 - 3.A. Shell Creek Implementation - 319 & NET
A SCWIG meeting occurred on September 19th at the Columbus NRCS office. As a reminder, the kids will present at our November Board meeting located in Newman Grove. A request was made from Newman Grove to provide consumable supplies needed by the students to continue analyzing groundwater samples. Project coordinator Bill Bos continues to make progress on implementing BMPs and staff are working on plans to rehabilitate six existing billboards and producing other promotional items including flyers and signs. The next SCWIG meeting is scheduled for December 5th at the Columbus NRCs office.
 - 3.A.1. Tom Sprunk Grade Stabilization Project
Bill Bos submitted paperwork (attachment) for project certification and payment for Tom Sprunk's grade stabilization project along Shell Creek. The final cost of the project came in at \$24,444.60, approved application cost was \$19,144.60. Cost overruns are due to cost of trucking in the fill material to meet compaction specs. Reimbursement for this project will come through the Shell Creek NET grant.
4. WAHOO CREEK WATERSHED

4.A. Dam Site Planning Update

4.A.1. Design - Olsson

Multiple meetings the past month regarding delays; USACE is requesting a further review by FWS for impacts related to Northern Long-eared bat, which is newly listed as endangered. Initial review by NRCS shows no impact to these species, but will require concurrence from FWS.

USACE will allow a Nationwide Permit (NWP) for the first 3 sites which will expedite the process by eliminating the alternative analysis and public comment period.

Design update: initially Olsson was operating that Nebraska DNR would supply edits to site 26A and any comments should be applied to further site designs and NRCS conducted reviews. Now, DNR will be reviewing all sites which will add to total review time.

Olsson invoice for \$63,439.25 is attached along with a progress report.

4.A.2. Real Estate - Olsson & Great Plains Appraisal

Olsson Real Estate invoice is attached for \$1,436.81.

Most work over the past month involved agency meeting and coordination with Great Plains appraisal scheduling. Overall work has slowed due to permitting delays.

5. HAZARD MITIGATION PLAN UPDATE

FEMA requested a few clarifications regarding our grant application for updating the HMP. JEO is submitting those on our behalf. This grant is also affected by FEMA's financial issues.

6. NEBRASKA BUFFER STRIP PROGRAM PAYMENTS

Our annual NeBSP (listed below) contract payments are due to be dispersed. Funding for the contracts comes from Nebraska Dept of Agriculture, while the NRD holds the contracts and performs status reviews. The NRD is reimbursed \$40.00 per status review.

Contract Holder	Acres	NDA #	Annual Payment
Janice Wilke Trust	2.98	99400a	\$190.16
Mary Theresa Norton Trust	8	20062	\$1,757.44
Mary Theresa Norton Trust	13.7	20062	\$3,009.62
Mary Theresa Norton Trust	11.2	20059	\$2,399.04
Mark Wilke	4.81	99400b	\$457.91
Charles Barjenbruch	9.5	100	\$2,033.00
Randall Brabec	1	22010	\$250.00
James Barjenbruch	2.5	23015	\$595.88
James Barjenbruch	8.2	362	\$1,661.98

Ed Luetkenhaus	4.5	10058	\$967.50
Larry Bruhn	4.7	21007	\$876.36
Tom Sprunk	13.3		\$2,992.50
Tom Sprunk	2.8		\$630.00
Tom Sprunk	2.1		\$472.50
Dean Klug Family Trust	6.3	99074a	\$232.72
Norman Lindgren	2.1	20027	\$83.16
Rod Julsen*	23.1	451	\$5,197.50
Kaye Lidolph	7.8	20037	\$1,381.30
Rezac Farms Inc	4.7		\$1,057.50
Rezac Farms Inc	3.6		\$786.96
Rezac Farms Inc	1		\$218.60
Rezac Farms Inc	1.4		\$306.04
Rezac Farms Inc	1.7		\$371.62
Rezac Farms Inc	3.5		\$787.50
Dan Gehring/Arlis Plummer	8.9	21020	\$2,148.46
Reece/Beau Klug	11.7	21024	\$2,632.50
David Luckey	12.7	21022	\$2,818.89
Diann Svatora	5.5	21023	\$1,327.70
Sam Welch	4.9	21025	\$1,050.32
River Road Land INC	13	00143a	\$3,250.00
Craig Foltz	27.3	00574a	\$6,825.00
Dry Creek Farms (Vavricek)	11.7		\$2,925.00
Charlene Klug (Welch)	2.1	23016	\$467.10
Total	228.49		\$52,161.76

7. OTHER

The Village of Colon is planning on building a new park. Representatives from the Village will be present to discuss the project.

8. ADJOURNMENT



West Fremont-Platte Township Progress Meeting

DATE AND TIME | September 14, 2023

PROJECT | Dodge County – West Fremont Scoping Project

JEO Project #201901.00

EMK-2020-BR-013-0015

MEETING | Progress Meeting

LOCATION | Fremont City Hall – Council Chambers

1. Goal of today's meeting
 - i. **Review structural alternatives**
 - ii. **Discuss Nonstructural actions**
 - iii. **Discussion of next steps**

2. Review of Structural Flood Risk Reduction Actions
 - a. Presented at February-23 progress meeting and discussed further at April-23
 - b. Dedicated/directed overflow of Platte River through sandpit lakes
 - i. Eliminated from further consideration at April-23 meeting
 - c. Modifications in Hormel Park to improve conveyance
 - i. Eliminated from further consideration at April-23 meeting
 - d. Hardening existing County/City culvert crossings
 - i. Eliminated from further consideration at April-23 meeting
 - e. Strategic road raises (Big Island, Ridgeland and Ridge Rd)
 - i. Eliminated from further consideration at April-23 meeting
 - f. Lake Ventura Cutt-off Improvements
 - i. Improvement further developed – to be discussed
 - g. Improvements to Farmland Levee
 - i. Improvement further developed – to be discussed

3. Lake Ventura Cutoff Improvement
 - a. Review of 2019 Flood Impacts
 - i. Fremont Cutoff east bank overtopping adjacent to UPRR
 - ii. Broke thru berm on north side of Lake Ventura
 - iii. Overflows into Lake Ventura
 - b. Repairs/Improvements post-2019
 - i. Additional rock rip rap at UPRR bridge
 - ii. Berm on north of the lake was repaired
 - c. Project Description
 - i. Raise short reach of east bank of Fremont Cutoff to UPRR level
 - ii. Rock Rip Rap on back slope for erosion protection
 - d. Review of Impacts/Benefits (see attached)
 - e. Review of Costs (see attached)

- f. Other Factors for Consideration
 - i. UPRR ROW
 - ii. Access for Construction
 - iii. Project Sponsorship

- 4. Farmland Levee Improvement - Alternate A
 - a. Review of 2019 Flood Impacts
 - b. Repairs/Improvements post-2019
 - c. Project A Description
 - i. Eliminate low spots/raise levee to a consistent 50yr+0 level of protection
 - ii. Add clay cap on riverside
 - d. Review of Impacts/Benefits (see attached)
 - e. Review of Costs
 - f. Other Factors for Consideration

- 5. Farmland Levee Improvement - Alternate B
 - a. Project B Description
 - i. Eliminate low spots/raise levee to a consistent 50yr+0 level of protection
 - ii. Add clay cap on riverside
 - iii. Underseepage Control
 - b. Review of Impacts/Benefits
 - c. Review of Costs

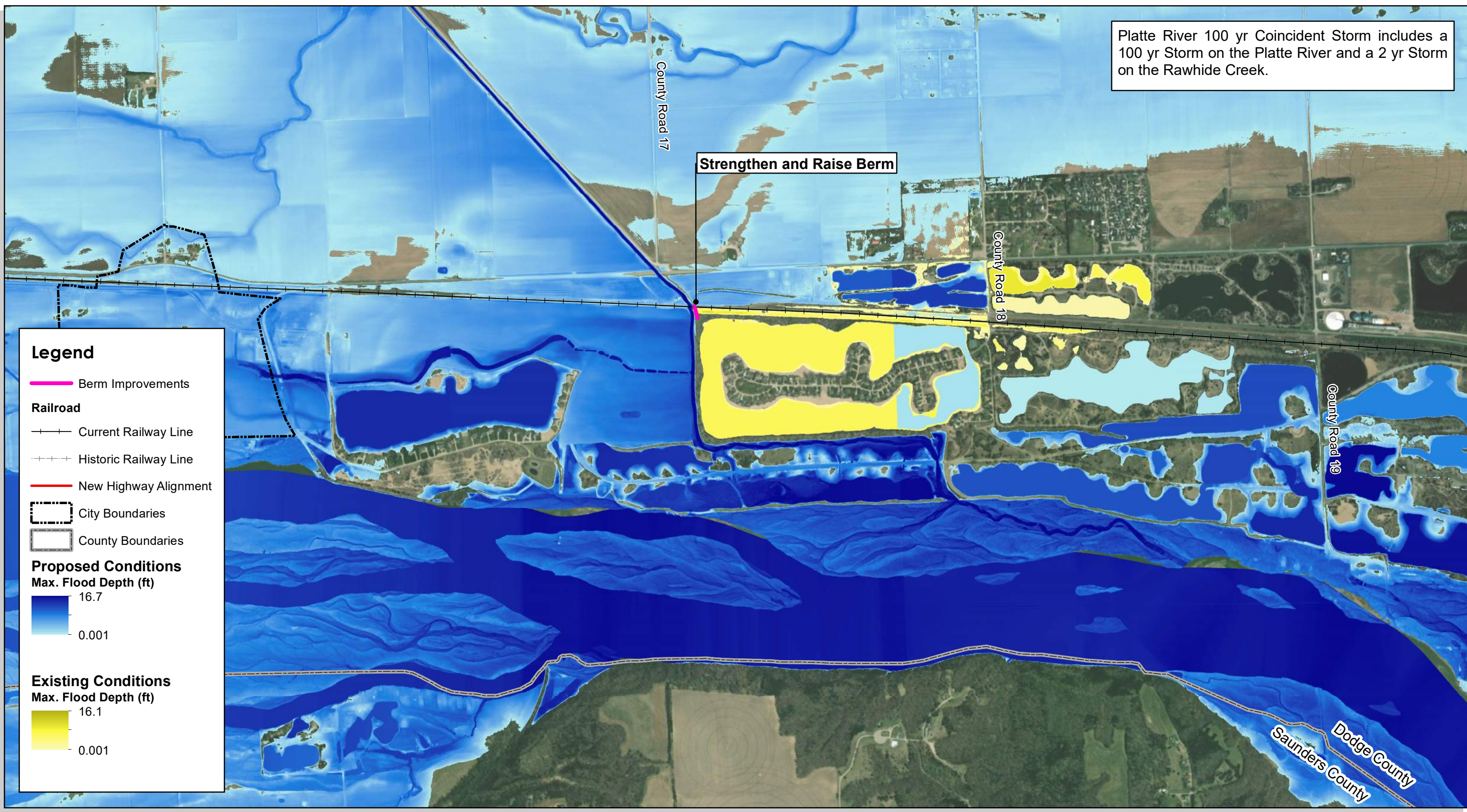
- 6. Farmland Levee Improvement - Alternate C
 - a. Project C Description
 - i. Overtopping erosion protection on landside
 - b. Review of Impacts/Benefits
 - c. Review of Cost

- 7. Nonstructural Mitigation
 - a. Development of a Flood Risk Management Program and Funding
 - i. Flood Risk Assessment
 - ii. Policy Recommendations – Risk Avoidance or Mitigation for New Development
 - iii. Retrofitting
 - iv. Acquisition
 - b. Public Outreach
 - c. Review with NEMA/FEMA on eligibility

- 8. Next steps
 - a. Open Discussion on Preferred Alternative(s)
 - b. Review Preferred Alternative(s) with NEMA/FEMA
 - c. Review/Discussion on ***Phase 2 – Advancement of Preferred Alternative***



Platte River 100 yr Coincident Storm includes a 100 yr Storm on the Platte River and a 2 yr Storm on the Rawhide Creek.



Legend

- Berm Improvements

Railroad

- Current Railway Line
- - - Historic Railway Line
- New Highway Alignment

City Boundaries

- - - City Boundaries

County Boundaries

- - - County Boundaries

Proposed Conditions

Max. Flood Depth (ft)

- 16.7
- 0.001

Existing Conditions

Max. Flood Depth (ft)

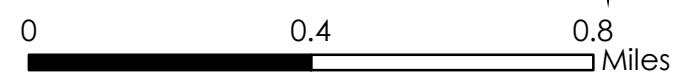
- 16.1
- 0.001

Created By: CEO
 Date: 9/13/23
 Software: ArcGIS 10.8.1

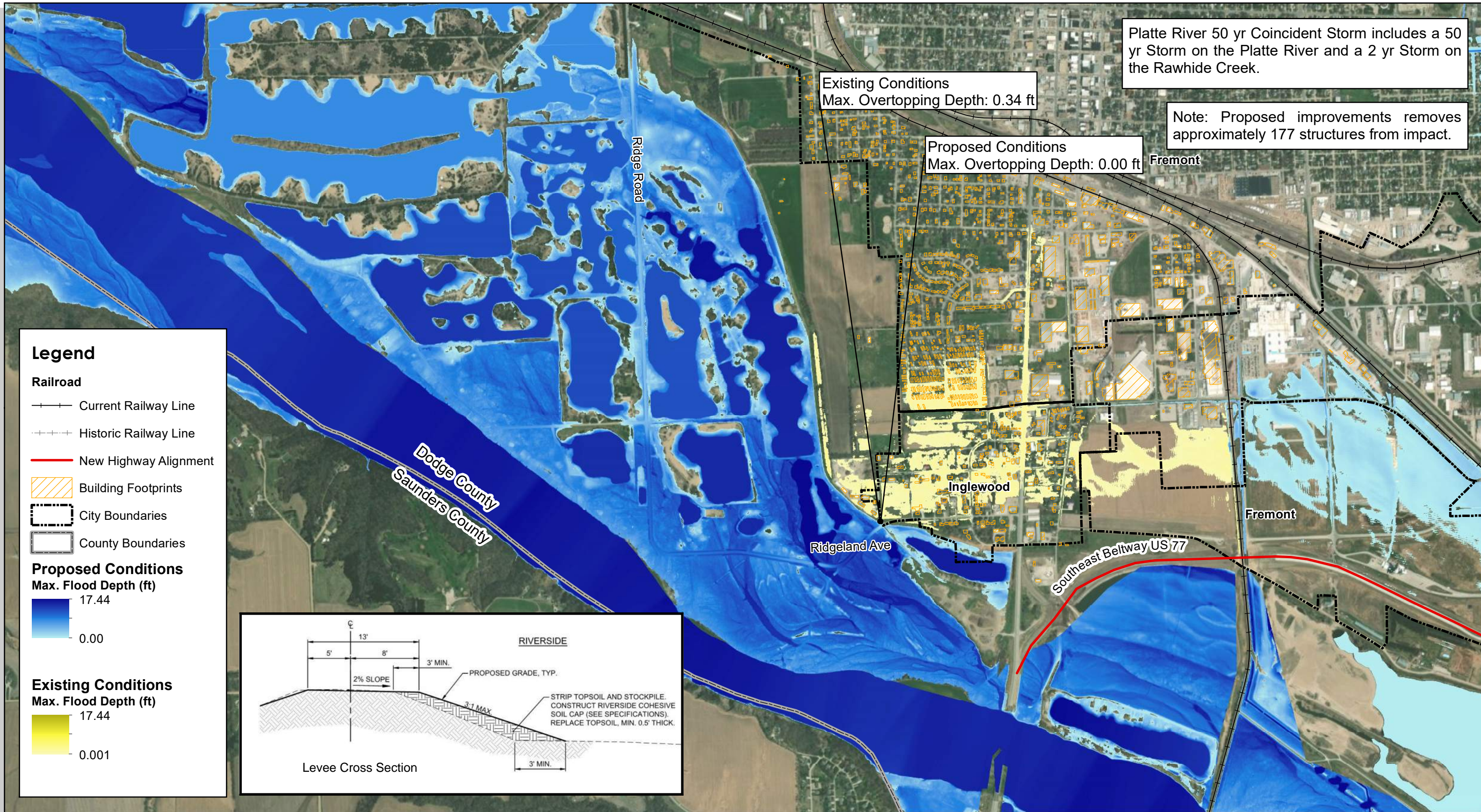
Platte River 100 - year Coincident Flow - Ventura Embankment Improvements

DRAFT

Platte Township - West Fremont Drainage Study



This map was prepared using information from record drawings supplied by JEO and/or other applicable city, county, federal, or public or private entities. JEO does not guarantee the accuracy of this map or the information used to prepare this map. This is not a scaled plat.



Created By: CEO
Date: 9/12/2023
Software: ArcGIS 10.8.1

Platte River 50-year Coincident Flow - Farmland Levee 50-year+0 ft

DRAFT

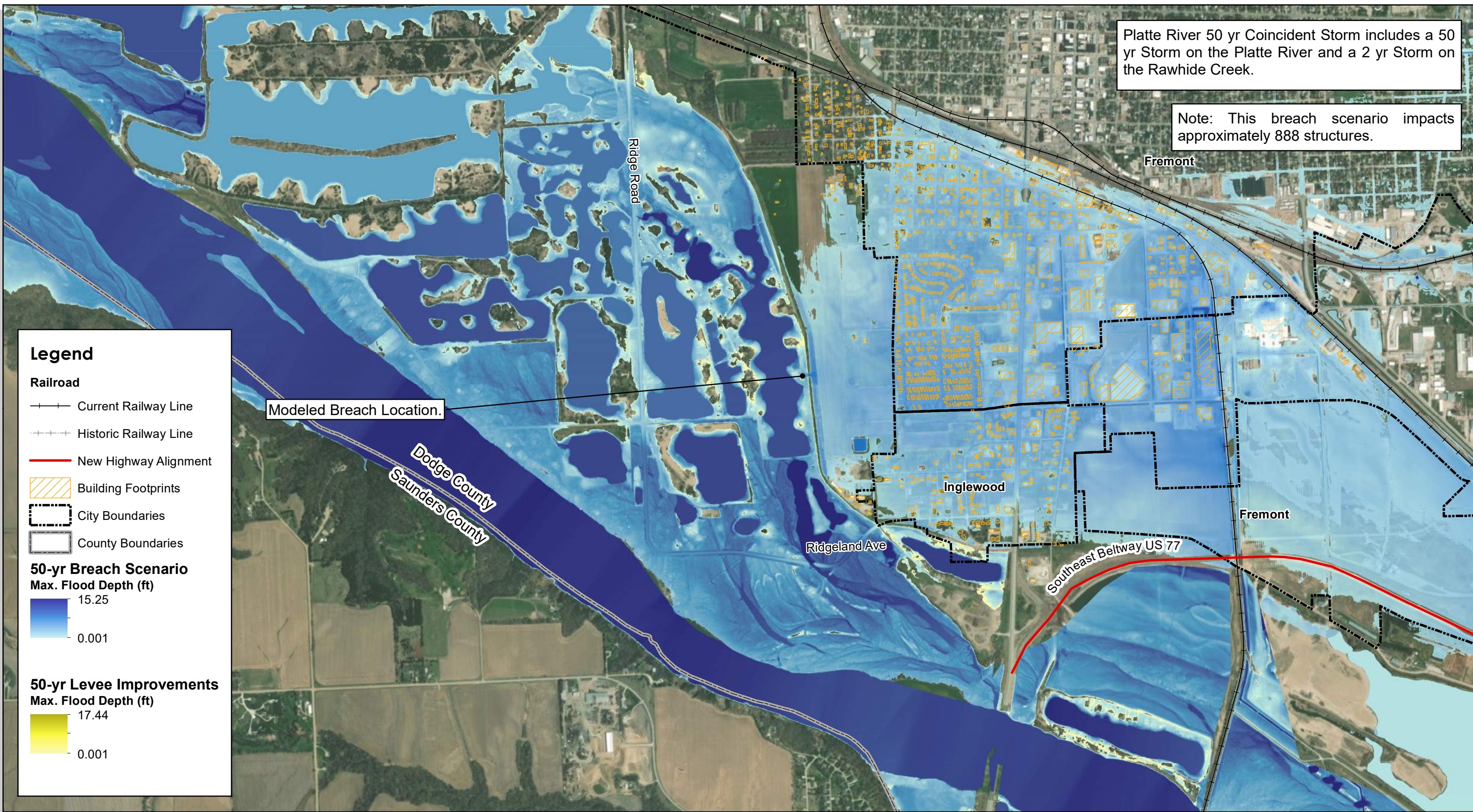
Platte Township - West Fremont Drainage Study



This map was prepared using information from record drawings supplied by JEO and/or other applicable city, county, federal, or public or private entities. JEO does not guarantee the accuracy of this map or the information used to prepare this map. This is not a scaled plat.

Platte River 50 yr Coincident Storm includes a 50 yr Storm on the Platte River and a 2 yr Storm on the Rawhide Creek.

Note: This breach scenario impacts approximately 888 structures.



Legend

Railroad

- +— Current Railway Line
- - - Historic Railway Line

Highway

- New Highway Alignment

Building Footprints

- ▨ Building Footprints

City Boundaries

- - - City Boundaries

County Boundaries

- ▭ County Boundaries

50-yr Breach Scenario

Max. Flood Depth (ft)

- 15.25
- 0.001

50-yr Levee Improvements

Max. Flood Depth (ft)

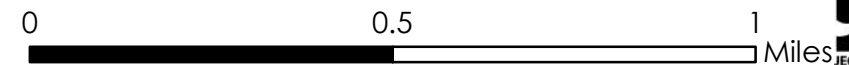
- 17.44
- 0.001

Created By: CEO
 Date: 9/12/2023
 Software: ArcGIS 10.8.1

Platte River 50-year Coincident Flow - Farmland Levee 50-year+0 ft Breach Scenario

DRAFT

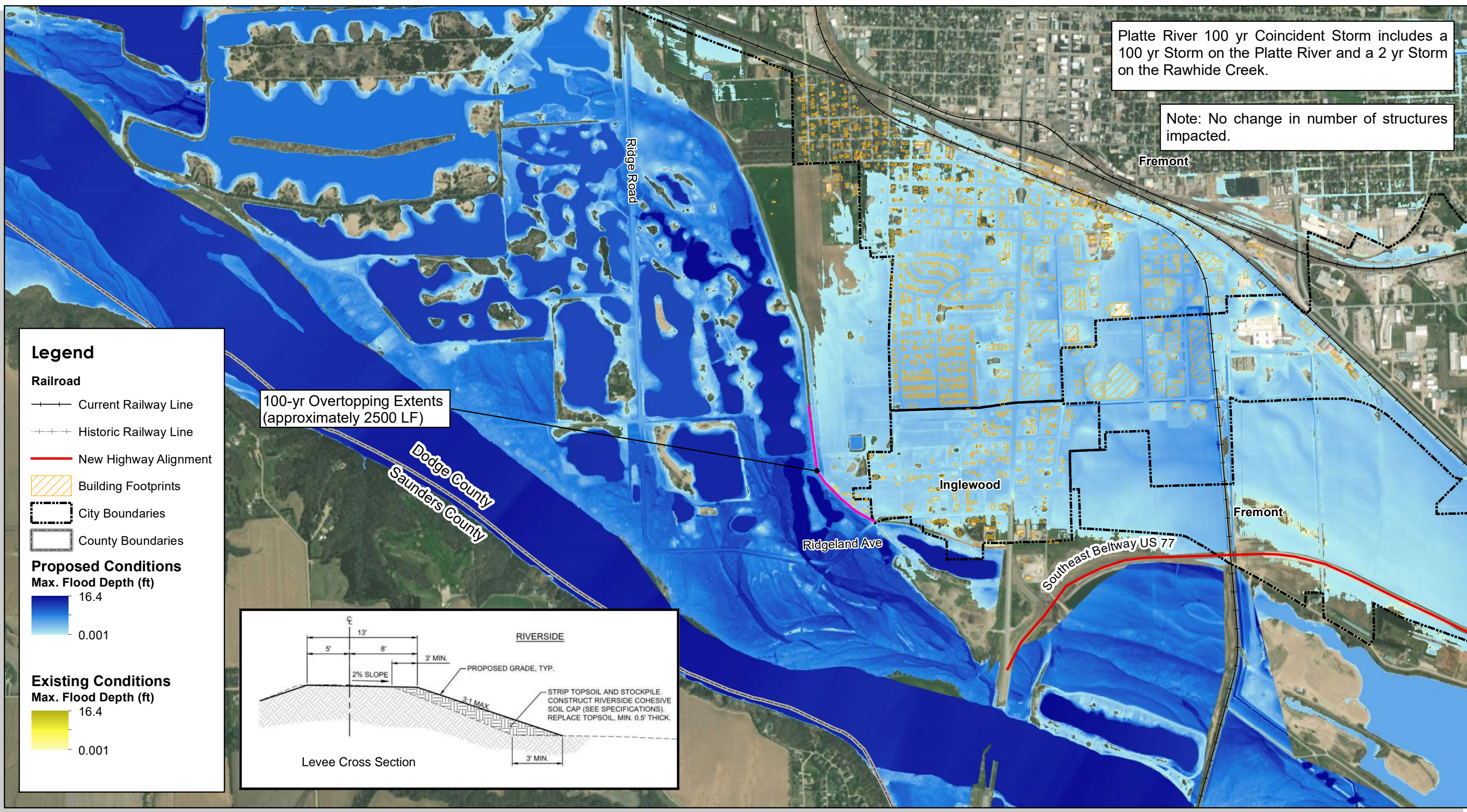
Platte Township - West Fremont Drainage Study



This map was prepared using information from record drawings supplied by JEO and/or other applicable city, county, federal, or public or private entities. JEO does not guarantee the accuracy of this map or the information used to prepare this map. This is not a scaled plat.

Platte River 100 yr Coincident Storm includes a 100 yr Storm on the Platte River and a 2 yr Storm on the Rawhide Creek.

Note: No change in number of structures impacted.



Legend

Railroad

- +— Current Railway Line
- - - Historic Railway Line
- New Highway Alignment

Building Footprints

City Boundaries

County Boundaries

Proposed Conditions

Max. Flood Depth (ft)

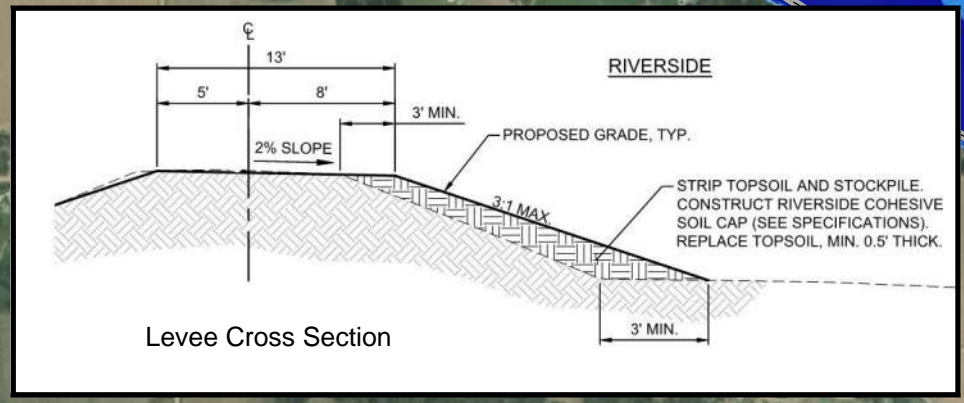
- 16.4
- 0.001

Existing Conditions

Max. Flood Depth (ft)

- 16.4
- 0.001

100-yr Overtopping Extents (approximately 2500 LF)

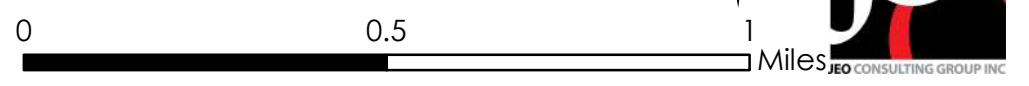


Created By: CEO
 Date: 9/12/2023
 Software: ArcGIS 10.8.1

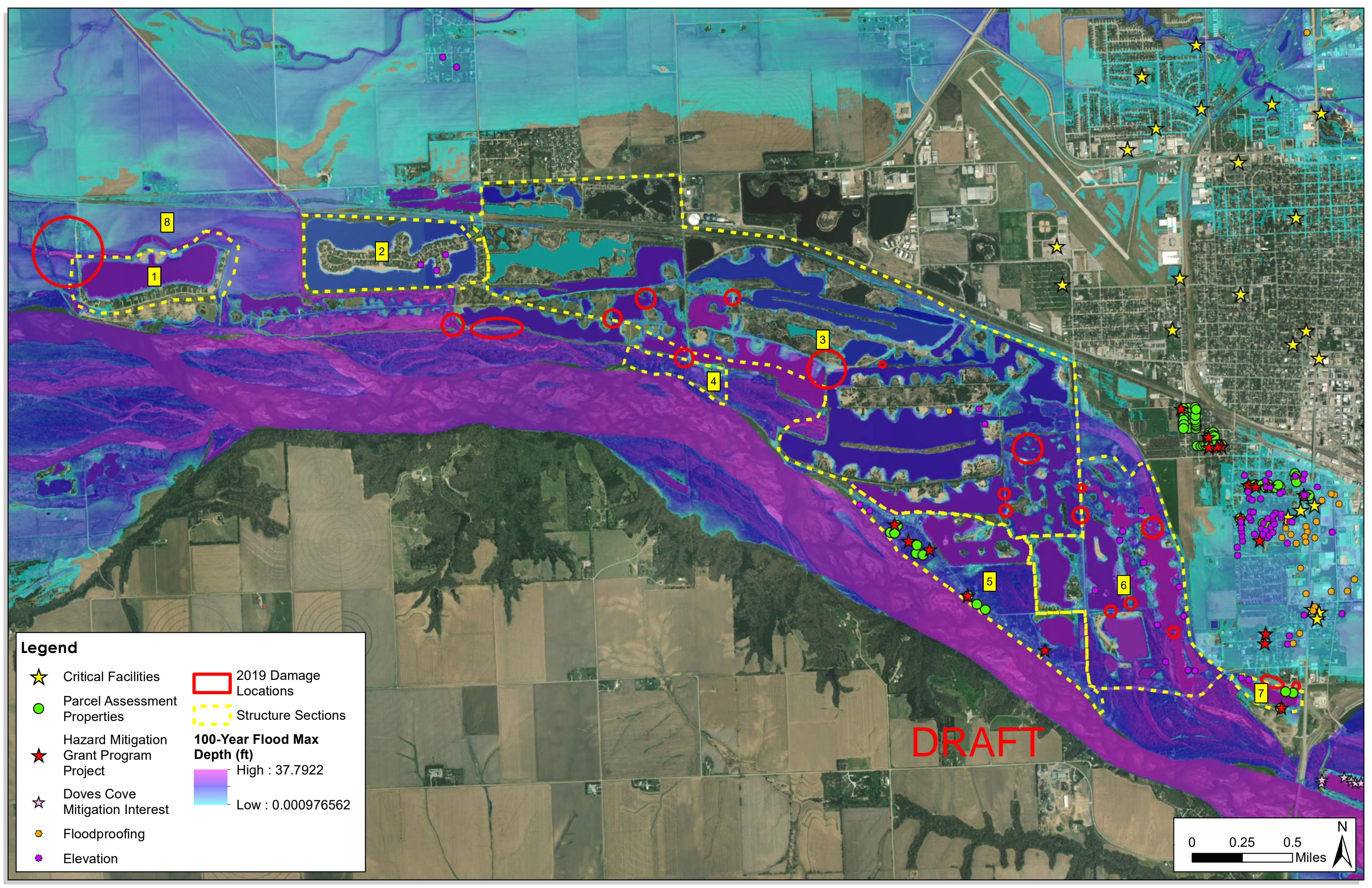
Platte River 100-year Coincident Flow - Farmland Levee 50-year+0 ft

DRAFT

Platte Township - West Fremont Drainage Study



This map was prepared using information from record drawings supplied by JEO and/or other applicable city, county, federal, or public or private entities. JEO does not guarantee the accuracy of this map or the information used to prepare this map. This is not a scaled plat.



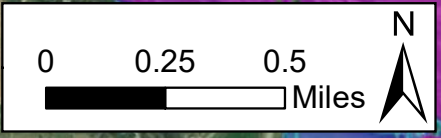
Legend

- ★ Critical Facilities
- Parcel Assessment Properties
- ★ Hazard Mitigation Grant Program Project
- ★ Doves Cove Mitigation Interest
- Floodproofing
- Elevation
- 2019 Damage Locations
- Structure Sections

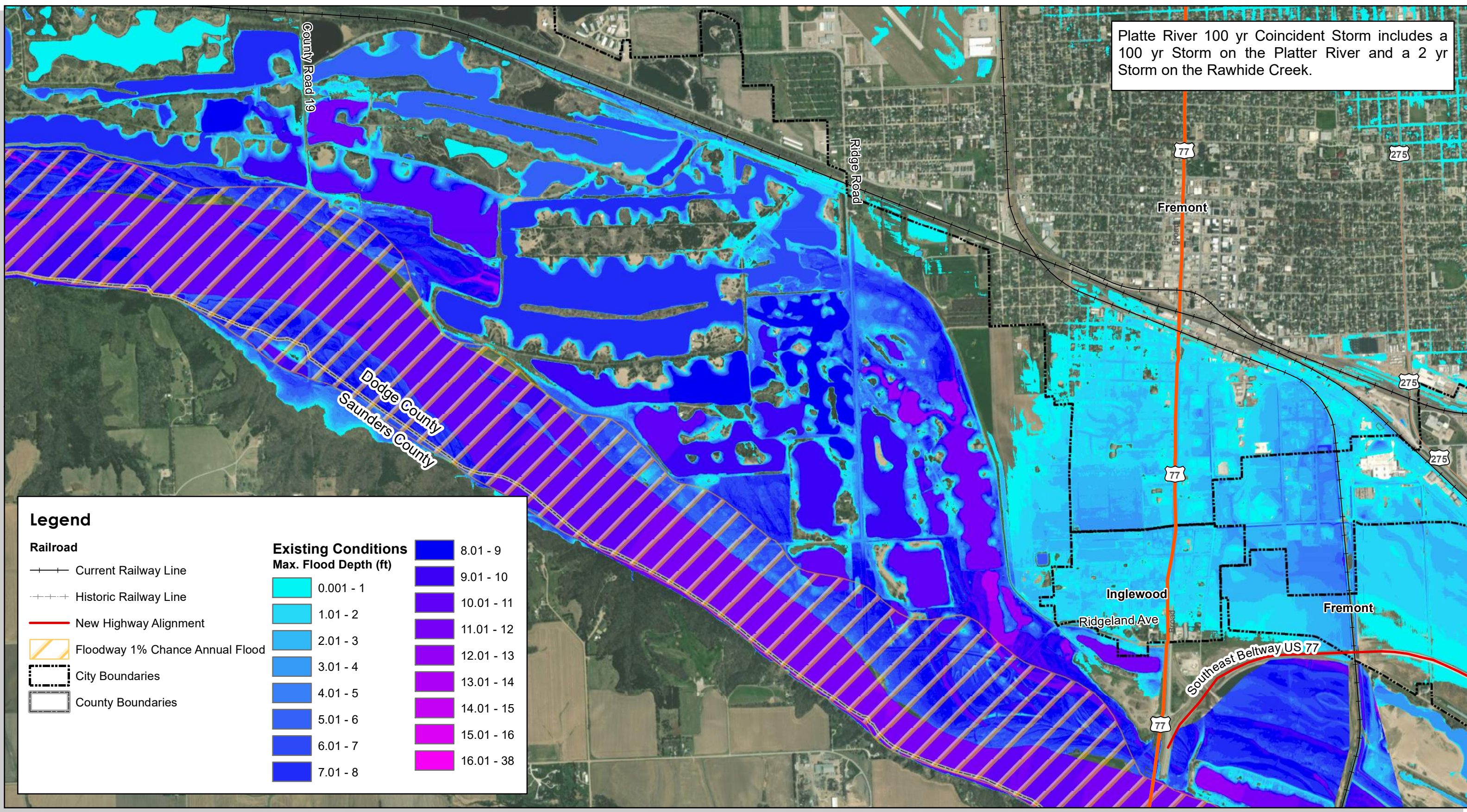
100-Year Flood Max Depth (ft)

- High : 37.7922
- Low : 0.000976562

DRAFT



Platte River 100 yr Coincident Storm includes a 100 yr Storm on the Platte River and a 2 yr Storm on the Rawhide Creek.



Legend

Railroad

- Current Railway Line
- Historic Railway Line
- New Highway Alignment

Existing Conditions

Max. Flood Depth (ft)

0.001 - 1	8.01 - 9
1.01 - 2	9.01 - 10
2.01 - 3	10.01 - 11
3.01 - 4	11.01 - 12
4.01 - 5	12.01 - 13
5.01 - 6	13.01 - 14
6.01 - 7	14.01 - 15
7.01 - 8	15.01 - 16
	16.01 - 38

Other Legend Items:

- Floodway 1% Chance Annual Flood
- City Boundaries
- County Boundaries

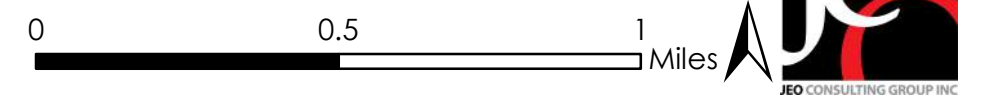
Created By: CEO
 Date: 8/22/23
 Software: ArcGIS 10.8.1

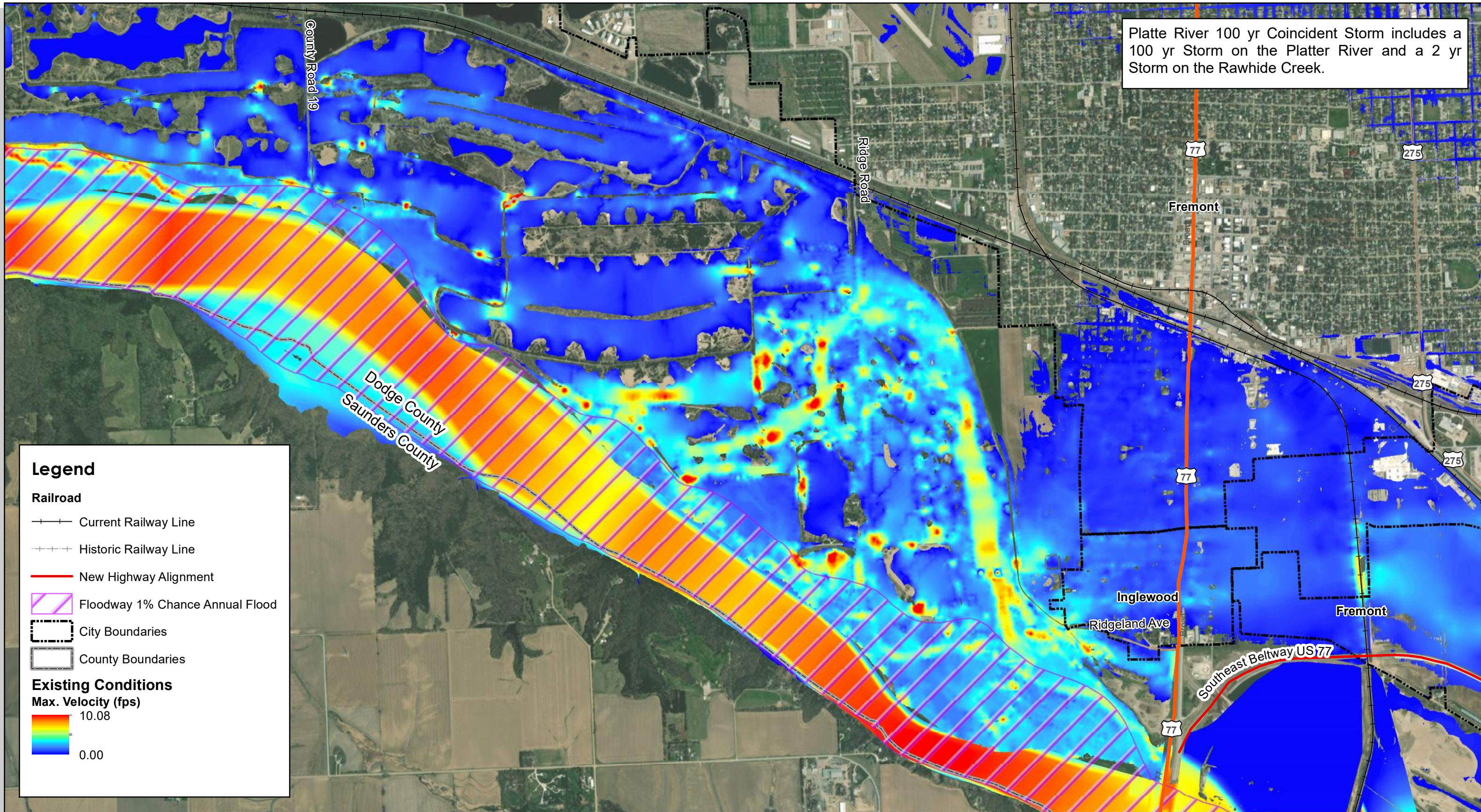
This map was prepared using information from record drawings supplied by JEO and/or other applicable city, county, federal, or public or private entities. JEO does not guarantee the accuracy of this map or the information used to prepare this map. This is not a scaled plat.

DRAFT

Platte River 100 - year Coincident Flow

Platte Township - West Fremont Drainage Study





Platte River 100 yr Coincident Storm includes a 100 yr Storm on the Platte River and a 2 yr Storm on the Rawhide Creek.

Legend

Railroad

- Current Railway Line
- - - Historic Railway Line

New Highway Alignment

- New Highway Alignment

Floodway 1% Chance Annual Flood

- ▨ Floodway 1% Chance Annual Flood

City Boundaries

- ⋯ City Boundaries

County Boundaries

- ⋯ County Boundaries

Existing Conditions

Max. Velocity (fps)

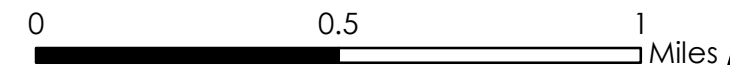
- 10.08
- 0.00

Created By: CEO
 Date: 8/22/23
 Software: ArcGIS 10.8.1

Platte River 100 - year Coincident Flow Velocity

DRAFT

Platte Township - West Fremont Drainage Study



This map was prepared using information from record drawings supplied by JEO and/or other applicable city, county, federal, or public or private entities. JEO does not guarantee the accuracy of this map or the information used to prepare this map. This is not a scaled plat.

ENGINEER'S CONCEPTUAL OPINION OF PROBABLE COST**Dodge County Platte Township - West Fremont Drainage Study****Fremont, NE****JEO Project No. 201901.00***Date Prepared:
September 13, 2023***SUMMARY OF CONCEPTUAL PROJECT COSTS****PROJECT A - Eliminate Low Spots (50-yr + 0') and Riverside Clay Cap**

Construction Cost	\$884,800
Non-Construction Cost	\$382,700
Total Project Cost	\$1,267,500

PROJECT B - Project A + Underseepage Control

Construction Cost	\$4,202,100
Non-Construction Cost	\$1,868,700
Total Project Cost	\$6,070,800

PROJECT C - Overtopping Protection Landside Riprap

Construction Cost	\$3,493,400
Non-Construction Cost	\$1,251,700
Total Project Cost	\$4,745,100

PROJECT D - Ventura Closure

Construction Cost	\$252,000
Non-Construction Cost	\$132,200
Total Project Cost	\$384,200

JEO Consulting Group Inc.'s (JEO) Opinions of Probable Cost provided for herein are to be made on the basis of JEO's experience and qualifications and represent JEO's best judgment. However, since JEO has no control over the cost of labor, materials, equipment, or services furnished by others, or over the Contractor's methods of determining prices, or over competitive bidding or market conditions, JEO cannot and does not guarantee that proposals, bids, or actual construction cost will not vary from Opinions of Probable Cost prepared by JEO.

ENGINEER'S CONCEPTUAL OPINION OF PROBABLE COST

Dodge County Platte Township - West Fremont Drainage Study

Fremont, NE

JEO Project No. 201901.00

Date Prepared:
September 13, 2023



ESTIMATE OF QUANTITIES

Item #	Description	Unit	Quantity	Unit Price	Total
PROJECT A - Eliminate Low Spots (50-yr + 0') and Riverside Clay Cap					
1.	Mobilization	LS	1	\$50,265	\$50,265
2.	Bonding and Insurance	LS	1	\$16,755	\$16,755
3.	Clearing and Grubbing	LS	1	\$20,000	\$20,000
4.	Remove Tree, > 24" Dia.	EA	10	\$2,000	\$20,000
5.	Remove Fence	LF	0	\$20	\$0
6.	Earthwork, Measured in Embankment (Fill)	CY	6,500	\$30	\$195,000
7.	Earthwork, Measured in Embankment (Cut)	CY	0	\$20	\$0
8.	Crushed Rock Surface Course, 3" Thick	TONS	1,720	\$60	\$103,200
9.	8" Concrete Pavement	SY	1,100	\$80	\$88,000
10.	Utility Pole Relocation	EA	5	\$5,000	\$25,000
11.	Remove and Replace 12' Wide Swing Gate	EA	2	\$2,000	\$4,000
12.	Stabilized Construction Entrance	EA	5	\$5,000	\$25,000
13.	Silt Fence, Low Porosity	LF	10,000	\$6	\$60,000
14.	Seeding and Hydromulch	ACRE	13	\$10,000	\$130,000
Construction Subtotal					\$737,300
Contingency 20%					\$147,500
Total Opinion of Construction Cost					\$884,800
NON-CONSTRUCTION ITEMS					
1.	Design Services (Engineering, Survey, Cons. Admin.)	24%		\$	212,400
2.	Overhead (Legal, Fiscal, Etc.)	5%		\$	44,200
3.	Permitting	6%		\$	53,100
4.	Land Acquisition (\$20k/acre)	2 Acres		\$	40,000
5.	Temp Land Access (\$3k/acre)	11 Acres		\$	33,000
6.	Spoils Disposal Site(s) (\$3k/acre)	Acres		\$	-
Subtotal					\$ 382,700
Total Opinion of Project Cost					\$ 1,267,500

JEO Consulting Group Inc.'s (JEO) Opinions of Probable Cost provided for herein are to be made on the basis of JEO's experience and qualifications and represent JEO's best judgment. However, since JEO has no control over the cost of labor, materials, equipment, or services furnished by others, or over the Contractor's methods of determining prices, or over competitive bidding or market conditions, JEO cannot and does not guarantee that proposals, bids, or actual construction cost will not vary from Opinions of Probable Cost prepared by JEO.

ENGINEER'S CONCEPTUAL OPINION OF PROBABLE COST

Dodge County Platte Township - West Fremont Drainage Study

Fremont, NE

JEO Project No. 201901.00

Date Prepared:
September 13, 2023



ESTIMATE OF QUANTITIES

Item #	Description	Unit	Quantity	Unit Price	Total
PROJECT B - Project A + Underseepage Control					
1.	Mobilization	LS	1	\$238,748	\$238,748
2.	Bonding and Insurance	LS	1	\$79,583	\$79,583
3.	Clearing and Grubbing	LS	1	\$100,000	\$100,000
4.	Remove Tree, > 24" Dia.	EA	30	\$2,000	\$60,000
5.	Remove Fence	LF	0	\$20	\$0
6.	Earthwork, Measured in Embankment (Fill)	CY	6,500	\$30	\$195,000
7.	Earthwork, Measured in Embankment (Cut)	CY	0	\$20	\$0
8.	Seepage Berm (Fill)	CY	76,500	\$25	\$1,912,500
9.	Toe Drain Pipe, 10" PVC Perforated	LF	1,000	\$200	\$200,000
10.	Crushed Rock Surface Course, 3" Thick	TONS	1,720	\$60	\$103,200
11.	8" Concrete Pavement	SY	1,100	\$80	\$88,000
12.	Utility Pole Relocation	EA	5	\$5,000	\$25,000
13.	Remove and Replace 12' Wide Swing Gate	EA	2	\$2,000	\$4,000
14.	Stabilized Construction Entrance	EA	5	\$5,000	\$25,000
15.	Silt Fence, Low Porosity	LF	15,100	\$6	\$90,600
16.	Seeding and Hydromulch	ACRE	38	\$10,000	\$380,000
Construction Subtotal					\$3,501,700
Contingency 20%					\$700,400
Total Opinion of Construction Cost					\$4,202,100

NON-CONSTRUCTION ITEMS

1.	Design Services (Engineering, Survey, Cons. Admin.)	24%	\$	1,008,500
2.	Overhead (Legal, Fiscal, Etc.)	5%	\$	210,100
3.	Permitting	6%	\$	252,100
4.	Land Acquisition (\$20k/acre)	19 Acres	\$	380,000
5.	Temp Land Access (\$3k/acre)	6 Acres	\$	18,000
6.	Spoils Disposal Site(s) (\$3k/acre)	Acres	\$	-
Subtotal				\$ 1,868,700
Total Opinion of Project Cost				\$ 6,070,800

JEO Consulting Group Inc.'s (JEO) Opinions of Probable Cost provided for herein are to be made on the basis of JEO's experience and qualifications and represent JEO's best judgment. However, since JEO has no control over the cost of labor, materials, equipment, or services furnished by others, or over the Contractor's methods of determining prices, or over competitive bidding or market conditions, JEO cannot and does not guarantee that proposals, bids, or actual construction cost will not vary from Opinions of Probable Cost prepared by JEO.

ENGINEER'S CONCEPTUAL OPINION OF PROBABLE COST

Dodge County Platte Township - West Fremont Drainage Study

Fremont, NE

JEO Project No. 201901.00

Date Prepared:
September 13, 2023



ESTIMATE OF QUANTITIES

Item #	Description	Unit	Quantity	Unit Price	Total
PROJECT C - Overtopping Protection Landside Riprap					
1.	Mobilization	LS	1	\$198,480.00	\$198,480
2.	Bonding and Insurance	LS	1	\$66,160.00	\$66,160
3.	Clearing and Grubbing	LS	1	\$20,000.00	\$20,000
4.	Remove Tree, > 24" Dia.	EA	10	\$2,000.00	\$20,000
5.	Remove Fence	LF	0	\$20.00	\$0
6.	Earthwork, Measured in Embankment (Fill)	CY	0	\$25.00	\$0
7.	Earthwork, Measured in Embankment (Cut)	CY	0	\$20.00	\$0
8.	Rock Riprap, NDOR Type B	TONS	24,000	\$105.00	\$2,520,000
9.	Crushed Rock Surface Course, 3" Thick	TONS	440	\$60.00	\$26,400
10.	8" Concrete Pavement	SY	0	\$75.00	\$0
11.	Utility Pole	EA	0	\$5,000.00	\$0
12.	Remove and Replace 12' Wide Swing Gate	LS	0	\$2,000.00	\$0
13.	Stabilized Construction Entrance	EA	2	\$5,000.00	\$10,000
14.	Silt Fence, Low Porosity	LF	2,500	\$8.00	\$20,000
15.	Seeding and Hydromulch	ACRE	3	\$10,000.00	\$30,000
Construction Subtotal					\$2,911,100
Contingency 20%					\$582,300
Total Opinion of Construction Cost					\$3,493,400

NON-CONSTRUCTION ITEMS

1.	Design Services (Engineering, Survey, Cons. Admin.)	24%	\$	838,400.00
2.	Overhead (Legal, Fiscal, Etc.)	5%	\$	174,700.00
3.	Permitting	6%	\$	209,600.00
4.	Land Acquisition (\$20k/acre)	1 Acres	\$	20,000.00
5.	Temp Land Access (\$3k/acre)	3 Acres	\$	9,000.00
6.	Spoils Disposal Site(s) (\$3k/acre)	Acres	\$	-
Subtotal				\$ 1,251,700.00
Total Opinion of Project Cost				\$ 4,745,100

JEO Consulting Group Inc.'s (JEO) Opinions of Probable Cost provided for herein are to be made on the basis of JEO's experience and qualifications and represent JEO's best judgment. However, since JEO has no control over the cost of labor, materials, equipment, or services furnished by others, or over the Contractor's methods of determining prices, or over competitive bidding or market conditions, JEO cannot and does not guarantee that proposals, bids, or actual construction cost will not vary from Opinions of Probable Cost prepared by JEO.

ENGINEER'S CONCEPTUAL OPINION OF PROBABLE COST

Dodge County Platte Township - West Fremont Drainage Study

Fremont, NE

JEO Project No. 201901.00

Date Prepared:
September 13, 2023



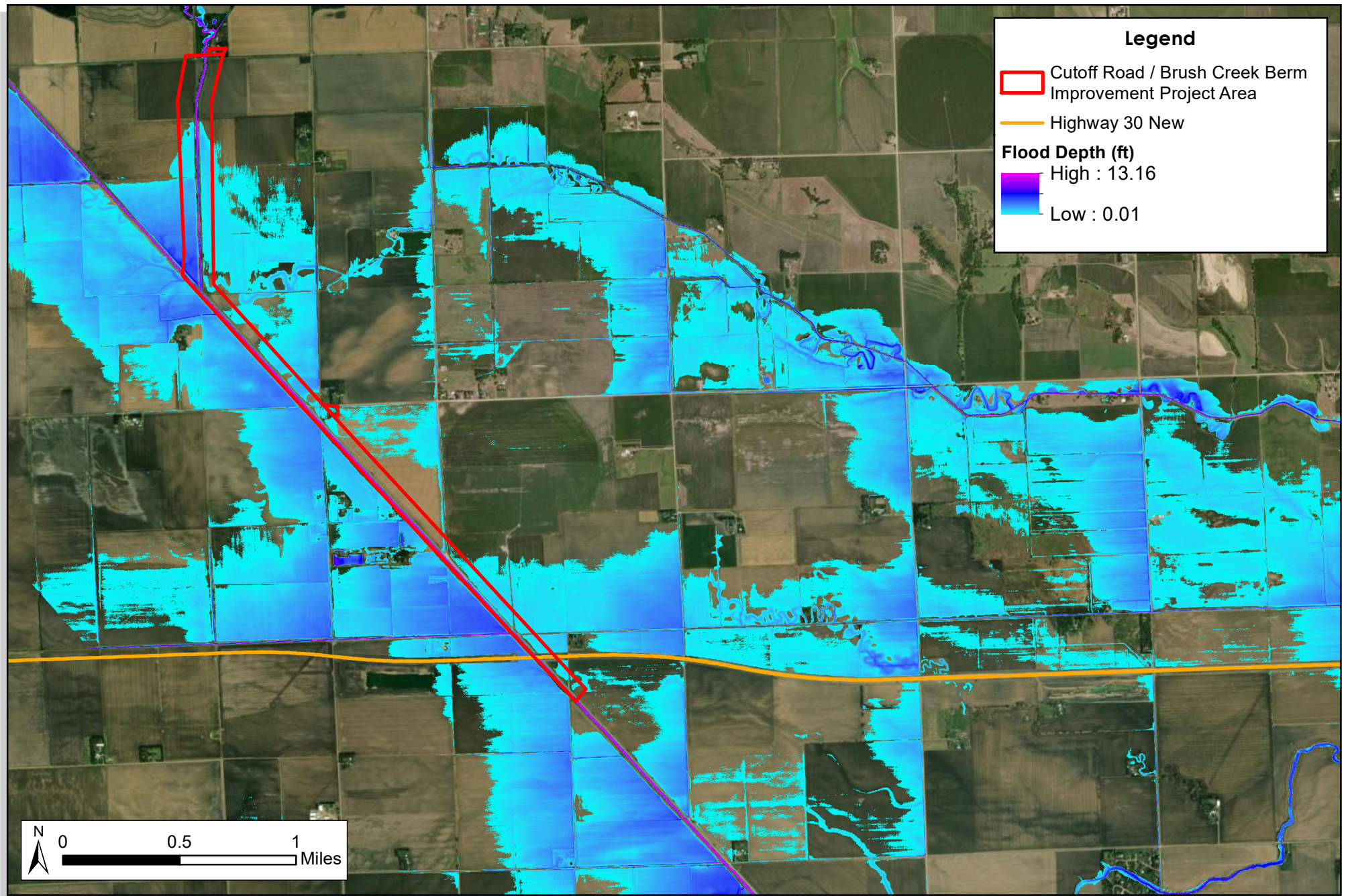
ESTIMATE OF QUANTITIES

Item #	Description	Unit	Quantity	Unit Price	Total
PROJECT D - Ventura Closure					
1.	Mobilization	LS	1	\$14,313.00	\$14,313
2.	Bonding and Insurance	LS	1	\$4,771.00	\$4,771
3.	Clearing and Grubbing	LS	1	\$5,000.00	\$5,000
4.	Remove Tree, > 24" Dia.	EA	4	\$2,000.00	\$8,000
5.	Remove Fence	LF	0	\$20.00	\$0
6.	Earthwork, Measured in Embankment (Fill)	CY	260	\$30.00	\$7,800
7.	Earthwork, Measured in Embankment (Cut)	CY	0	\$20.00	\$0
8.	Rock Riprap, NDOR Type B	TONS	1,000	\$105.00	\$105,000
9.	Crushed Rock Surface Course, 3" Thick	TONS	0	\$60.00	\$0
10.	24" RCP, Class III	LF	64	\$500.00	\$32,000
11.	24" RCP Flared End Section	EA	1	\$3,500.00	\$3,500
12.	Automatic Flap Gate	EA	1	\$8,500.00	\$8,500
13.	Wooden Pipe Support	EA	1	\$5,000.00	\$5,000
14.	Stabilized Construction Entrance	EA	1	\$5,000.00	\$5,000
15.	Silt Fence, Low Porosity	LF	130	\$8.00	\$1,040
16.	Seeding and Hydromulch	ACRE	1	\$10,000.00	\$10,000
Construction Subtotal					\$210,000
Contingency 20%					\$42,000
Total Opinion of Construction Cost					\$252,000

NON-CONSTRUCTION ITEMS

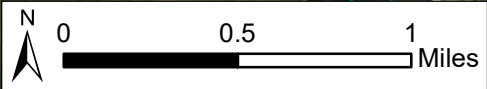
1.	Design Services (Engineering, Survey, Cons. Admin.)	24%	\$	60,500.00
2.	Overhead (Legal, Fiscal, Etc.)	5%	\$	12,600.00
3.	Permitting	6%	\$	15,100.00
4.	Land Acquisition (\$20k/acre)	1 Acres	\$	20,000.00
5.	Temp Land Access (\$3k/acre)	3 Acres	\$	9,000.00
6.	UPRR Coordination		\$	15,000.00
Subtotal				\$ 132,200.00
Total Opinion of Project Cost				\$ 384,200

JEO Consulting Group Inc.'s (JEO) Opinions of Probable Cost provided for herein are to be made on the basis of JEO's experience and qualifications and represent JEO's best judgment. However, since JEO has no control over the cost of labor, materials, equipment, or services furnished by others, or over the Contractor's methods of determining prices, or over competitive bidding or market conditions, JEO cannot and does not guarantee that proposals, bids, or actual construction cost will not vary from Opinions of Probable Cost prepared by JEO.



Legend

- Cutoff Road / Brush Creek Berm Improvement Project Area
- Highway 30 New
- Flood Depth (ft)**
- High : 13.16
- Low : 0.01



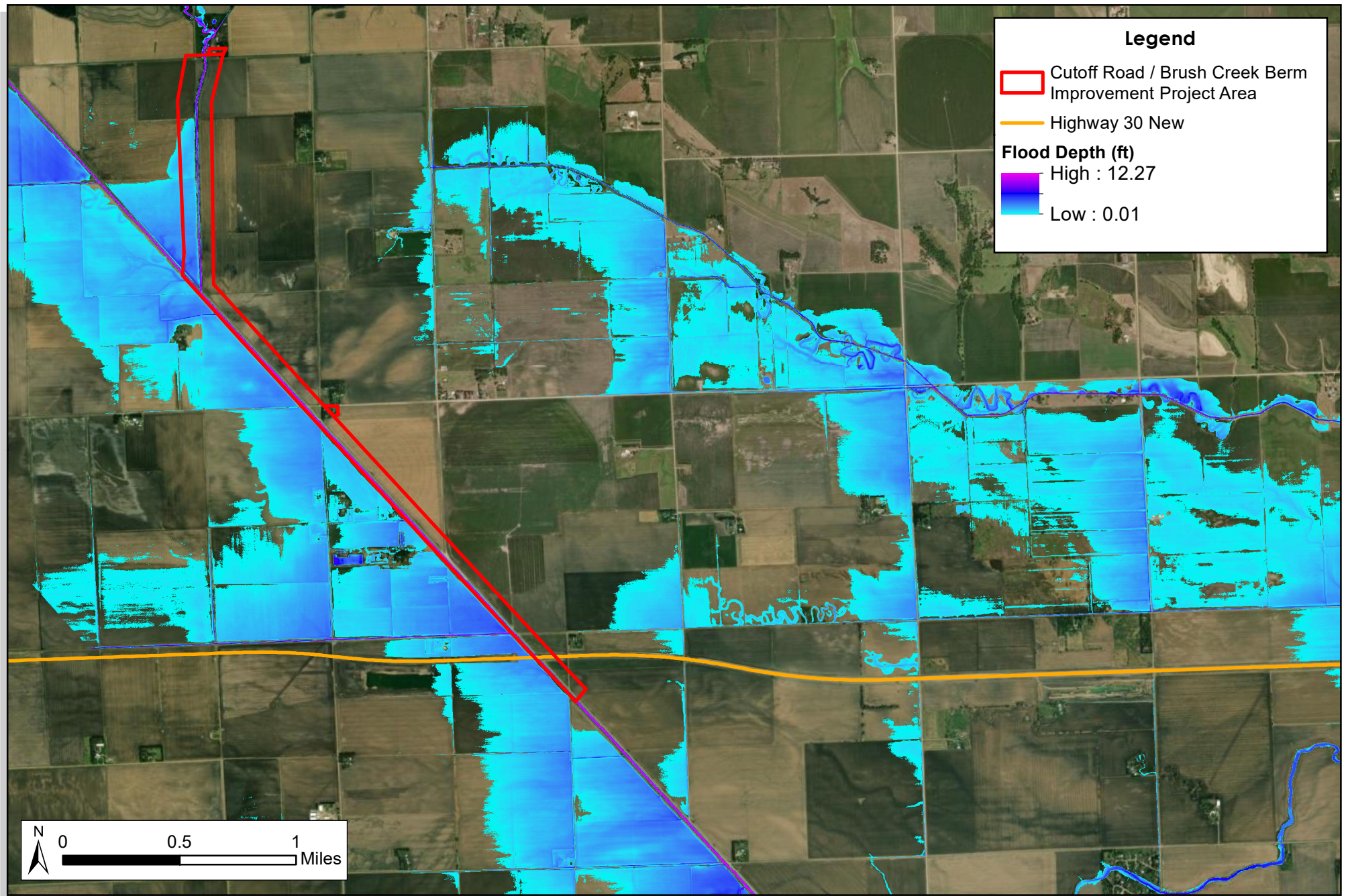
Created By: DJV
 Date: 9/26/2023
 Software: ArcGIS 10.8.1

Existing Conditions - 100 Yr Flood

Rawhide Creek WFPO

This map was prepared using information from record drawings supplied by JEO and/or other applicable city, county, federal, or public or private entities. JEO does not guarantee the accuracy of this map or the information used to prepare this map. This is not a scaled plot.



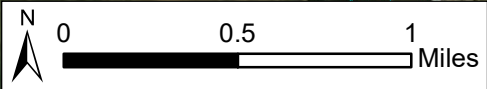


Legend

- Cutoff Road / Brush Creek Berm Improvement Project Area
- Highway 30 New

Flood Depth (ft)

- High : 12.27
- Low : 0.01



Created By: DJV
 Date: 9/26/2023
 Software: ArcGIS 10.8.1

Proposed Conditions - 100 Yr Flood

Rawhide Creek WFPO

This map was prepared using information from record drawings supplied by JEO and/or other applicable city, county, federal, or public or private entities. JEO does not guarantee the accuracy of this map or the information used to prepare this map. This is not a scaled plot.



LPNNRD

Cover Sheet For NSWCP Cost-Share Applications

Date 4-10-23 Land Legal See Attached Aerial photo

Landowner Tom Sprunk Phone # 402.910.6797

Address _____ SS# _____

City Columbus State NE Zip 68601

Operator JAMB Phone# _____

Address _____

City _____ State _____ Zip _____

1. Cost-Share Request: (circle one option per application)

- A. Establishment of warm or cool season grass on cropland.
- B. New Terraces with Tile Outlets
(has never been terraced before) (existing terraces on field are 20 years old or older)
- C. New Terraces with grass waterways
(has never been terraced before) (existing terraces on field are 20 years old or older)
- D. Install Tile outlets into existing terrace system
(this practice is for summer sign-up only, with a \$3,500.00 cost-share limit and limited payment on dirt work.)

E. Water Impoundment Structure
(75% land treatment required above structure site)

F. Other Grad. Stab. w/ cme inlet conjunction w/ Neb. Bufferstrip

2. If approved, when do you plan to do the work?

Summer or Fall

3. Has this area been in grass or trees in the last 5 years?

Yes or No

4. Is the proposed project located within the drainage of an existing or proposed NRD watershed structure, or watershed targeted for accelerated land treatment?

Yes or No If yes which watershed? Shell Creek

5. Comments Plans to do summer 2023

NRCS Estimate \$ 19,144.00

Stankoski Dozing and Excavating

42436 220th Street
Monroe, NE 68647
402-948-0199



INVOICE

BILL TO

Tom Sprunk
9680 63rd Ave
Columbus, NE 68601

*Actual Bill
9/23*

INVOICE # 1205

DATE 09/20/2023

DUE DATE 10/20/2023

TERMS Net 30

DATE	ACTIVITY	DESCRIPTION	QTY	RATE	AMOUNT
09/08/2023	Culvert	culvert	1	4,829.75	4,829.75
09/08/2023	Dozer	level area	12	170.00	2,040.00
09/09/2023	Excavator	prep area for culvert instillation, install culvert, load dirt into trucks	25	170.00	4,250.00
09/09/2023	Engine idle time	Excavator	2	-170.00	-340.00
09/11/2023	Dirt expense	48 loads @ 28yrd per load=1344 yards \$4 per yard	1,344	4.00	5,376.00
09/11/2023	Trucking	Zarek trucking to move the dirt to jobsite	16	130.00	2,080.00
09/11/2023	Trucking	Johnson trucking to move dirt to jobsite	31.50	135.00	4,252.50
09/11/2023	Rock	3/4 inch rock	1	1,190.35	1,190.35
09/11/2023	Labor	Air compressor w/tamper	1	500.00	500.00
09/11/2023	seed	tri-grain mix	3	22.00	66.00
09/11/2023	seed	pasture mix	4	50.00	200.00

Thank you for doing business with us!

BALANCE DUE

\$24,444.60

1.5% interest will be charged per month to accounts not paid in full by due date

Stankoski Dozing and Excavating

42436 220th Street
Monroe, NE 68647
402-948-0199



Estimate

Tom Sprunk
9680 63rd Ave
Columbus, NE 68601

1028
03/01/2023

DATE		DESCRIPTION	QTY	RATE	AMOUNT
05/01/2023	Dozer	Clear area, install pipe, load dirt, smooth and pack dirt	13	170.00	2,210.00
05/01/2023	Excavator	Clear area, install pipe, load dirt, smooth and pack dirt	20	170.00	3,400.00
05/01/2023	Trucking	Side dumper use 37 loads	37	120.00	4,440.00
05/01/2023	Dirt expense	Dirt needed for project 28 yards per load x 37 loads at \$4 per yard	1,036	4.00	4,144.00

TOTAL

\$14,194.00

PIPE 4,450.00
18,644.00
5x5 rock 500.00
19,144.00



Request for Assistance (On-Site Waste System) Shell Creek Watershed Land & Water Improvement Program

NAME & ADDRESS: Tom Sprunk
9680 63rd Ave.
Columbus, NE. 68601

PHONE NUMBER: 402.910.6797 COUNTY: Platte Co.

SOCIAL SECURITY or TAX IDENT NO: X - - - - - LEGAL: NW 4 Sec. 26-18-1W

IN ACCOUNT WITH THE SHELL CREEK WATERSHED IMPROVEMENT GROUP (SCWIG)

Please Check Appropriate Box:

Individual/Sole Proprietor Corporation Partnership Other

Approximate Completion Date _____ Expiration Date _____

Practice Number	Description of Practice	Extent Requested	Other Funding	SCWIG Share	Total Amt Obligated	Payment
	Grade Stab. Structure w/CMP	1 ⁰⁰	-0-	75%	\$14,358.00	
	Installed	1 ⁰⁰	-0-	75%		\$18,333.45
		TOTAL		\$ -		\$18,333.45

LANDOWNER AND/OR APPLICANT CERTIFICATION: I request assistance under the Shell Creek Watershed Land and Water Improvement program administered by the SCWIG. If applicable, the Practice(s) shown above is in accordance with NDEQ regulations developed by the State Of Nebraska. I further certify that I have the authority on behalf of the Landowner(s) to make this request and carry out the above practices and assume full responsibilities of the same. I agree that I am obligated to pay the contractor 100% of the cost and request reimbursement for 60% (up to \$300) for pump and inspection fees and 60% (up to \$3000) of the repair/replacement cost. Any reduction in the contractor's billing or refund of payment must be reported to the SCWIG. Violation of these rules will result in a lawsuit against me.

SIGNATURE: X Tom Sprunk DATE: 4-10-23

TECHNICIAN'S STATEMENTS:
 The Landowner has applied for EQIP Funds YES NO or NA Amount Approved \$ _____
 TECHNICIAN'S SIGNATURE: Buil Boos DATE: 4-10-23

REMARKS:

The SCWIG approved the extent and amount shown above
 For SCWIG Board: _____ DATE: _____

CERTIFICATION:
 The practice shown above has been performed to the extent shown in practice units performed column and meets NDEQ specifications

 TECHNICIAN'S SIGNATURE DATE: 9/25/23

FOR SCWIG OFFICE USE:	
Actual Cost:	_____
Total Cost Share:	_____
Less Other:	_____
SCWIG Payment:	_____
Date Paid:	_____

NEBRASKA SOIL AND WATER CONSERVATION PROGRAM
Cost-Share Assistance Application, Payment Claim and Agreement

FOR DNR USE ONLY
 B# _____
 AB# _____

IN ACCOUNT WITH THE STATE OF NEBRASKA DEPARTMENT OF NATURAL RESOURCES	4-10-2023 DATE	Tom Sprunk LANDOWNER		
	SOC SEC OR TAX IDENT NO	9680 63rd Ave. ADDRESS	Columbus NE. CITY STATE	68601 ZIP CODE +4
TELEPHONE NUMBER (including Area Code)				

- 1 (we) the undersigned do hereby request cost-share assistance to help defray the cost of installing the soil and water conservation practices as listed below. It is understood and agreed that
- 2 before receiving any cost-share funds it will be necessary for the landowner(s) to sign the agreement below relating to the maintenance of practices installed.
- 3 Practices must be planned and installed in accordance with technical specifications of the Natural Resources Conservation Service.
- 4 The responsible technician must make prior determination that the practices are feasible on the site where they are to be installed, that they are properly planned and installed, and that estimates of quantities are proper and reasonable.
- 5 Items of cost for which reimbursement is later claimed are to be supported by documentation of payments made or due to contractors or other workers.
- 6 This application will not be effective until approved by the Natural Resources District. Claims for payment will not be accepted more than nine (9) months from the date this application is approved unless an extension is granted by the Natural Resources District.
- 7 Maximum reimbursement will be limited to 75 percent of the actual cost to the landowner, the percentage of average costs specified below or the amount obligated by the Natural Resources District whichever amount is the least.

LOCATION OF PRACTICE NW4 1/4 SEC 26 TWP 18 RNG 14 Platte COUNTY

APPLICANT'S REQUEST					PRACTICE UNITS PERFORMED				
PRACTICE NO. & DESCRIPTION	UNIT	EXTENT	AVE. COST/ Unit	MAXIMUM ASSISTANCE		EXTENT	SHARE RATE		COST-SHARE EXTENT X SMALLEST RATE
				%	\$		% AVE.	% ACT	
Grade - Stab. Structure w/CMP	ea	1	19,144.00	75	14,358.00	1ea		18,333.45	\$18,333.45
TOTAL						14,358.00	TOTAL		\$18,333.45
Signature of Landowner or Authorized Rep: <u>Tom Sprunk</u> Date: <u>4-10-23</u>					LESS OTHER COST-SHARE ASSISTANCE				\$ -0-
					TOTAL AMOUNT NSWCP CLAIM				\$18,333.45

Practices and Quantities requested are needed and practical and will be planned in accordance with Natural Resources Conservation Service technical specifications.

Buil Boz 4-10-23
 Signature of Technician Date

LANDOWNER(S) CERTIFICATION AND AGREEMENT
 I certify that the items for which payment is claimed were furnished under authority of the law and that the charges are reasonable, proper, and correct and no part of the claim has been paid. I further certify that I am the owner of the above described property and agree that if any or all of above installed practices shall be removed, altered, or modified so as to lessen their effectiveness without consent of the Natural Resources District for a period of ten years after the date of receiving payment, that a portion of the claimed amount shall be refunded to the Nebraska Department of Natural Resources if title to this land is transferred to another party. It shall be my responsibility to advise the new owner that this agreement is in force and to obtain such new owner's acceptance of the responsibilities herein.

APPLICATION APPROVAL
 The _____ NRD Board of Directors approved the Applicant's Request and hereby obligate \$ _____

 Signature of NRD Representative Date

SIGNATURE OF LANDOWNER(S)
Tom Sprunk

COMPLETION AND DOCUMENTATION CERTIFICATION
Buil Boz 9/25/23
 Signature of Technician Date

 Signature of NRD Representative Date

NEBRASKA DEPARTMENT OF NATURAL RESOURCES CERTIFICATION
 I hereby certify that the above claim has been reviewed by me and I find it a proper claim against the Nebraska Soil and Water Conservation Fund.

 Authorized Signature Date

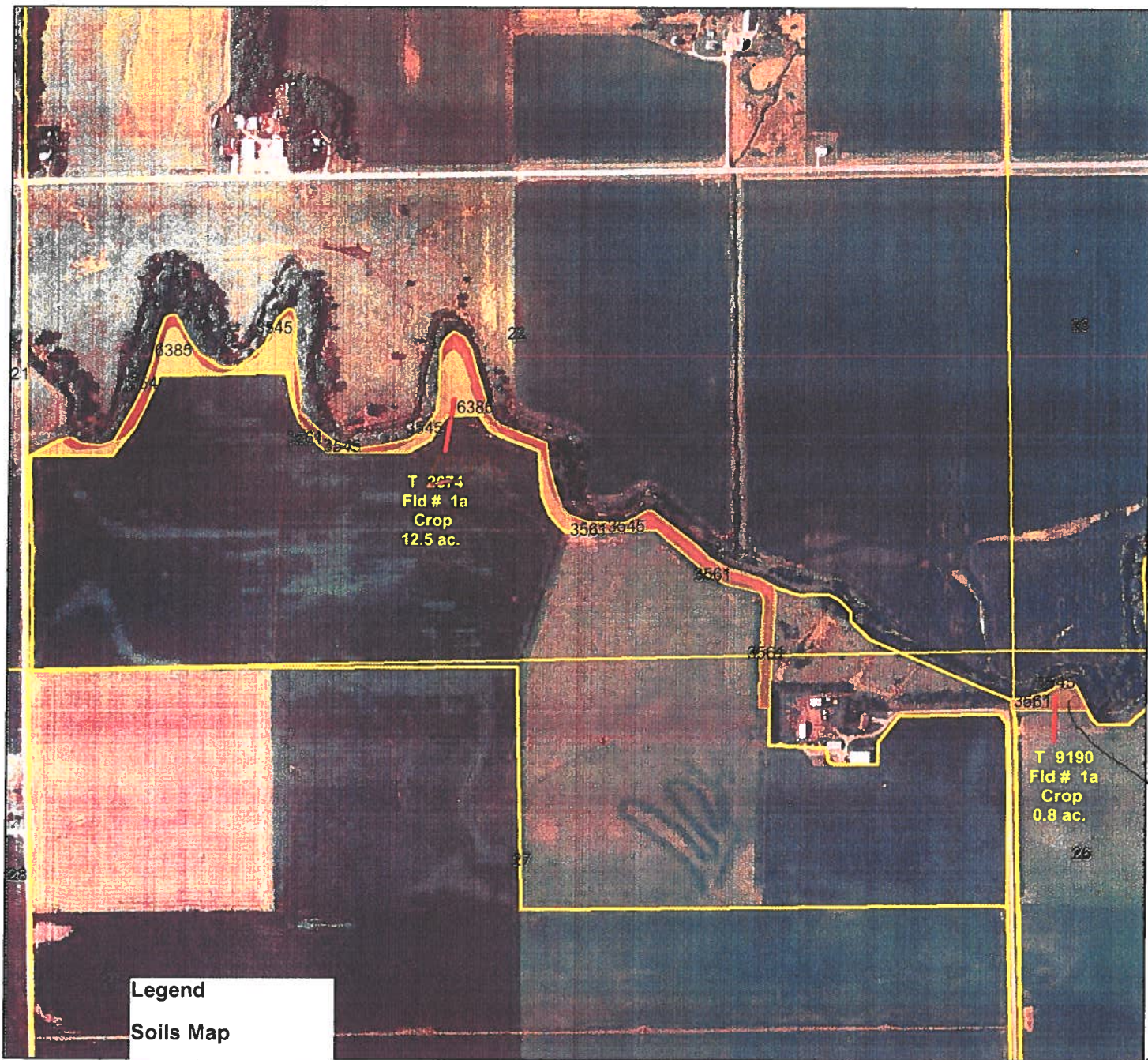
Conservation Plan Map

Date: 12/1/2009

Customer(s): THOMAS FRANCIS SPRUNK
District: LOWER PLATTE NORTH NATURAL RESOURCES DISTRICT
Approximate Acres: 13.3
Legal Description: NW4 26-18-1W, S2 22-18-1W

Field Office: COLUMBUS SERVICE CENTER
Agency: NRCS
Assisted By: Eric J Smith

Land Units: Tract: 2674-Field: 1a, Tract: 9190 Field: 1a



Legend
Soils Map
<all other values>

- musym**
- 3545
 - 3561
 - 6385
 - NBS_09_t2674
 - plss_a_ne141

*Area of
Grade Stab.
and Nebr.
Bufferstrip*



Invoice



601 P St Suite 200
PO Box 84608
Lincoln, NE 68501-4608
Tel 402.474.6311, Fax 402.474.5063

September 27, 2023
Invoice No: 472374

Ryan Chapman
Lower Platte North NRD
PO Box 126
Wahoo, NE 68066-0126

Invoice Total \$63,439.25

Olsson Project # A18-34230 Lower Platte North NRD Wahoo Creek Watershed & 7 Dam Sites
Phase II

Professional services rendered August 6, 2023 through September 9, 2023 for work completed in accordance with agreement.

Phase	100	Sites 55 66 77 82 84 85 86 Project Management		
Labor				
			Hours	Amount
Designer			2.00	323.34
	Totals		2.00	323.34
	Total Labor			323.34
			Total this Phase	\$323.34

Phase	110	Geotechnical Engineering		
Labor				
			Hours	Amount
Assistant Engineer			14.25	1,394.93
Project Professional			88.25	12,303.82
Assistant Professional			61.25	7,137.43
Administrative/Clerical			2.50	198.60
	Totals		166.25	21,034.78
	Total Labor			21,034.78
			Total this Phase	\$21,034.78

Phase	120	Dam Design		
Labor				
			Hours	Amount
Principal			3.25	506.12
Assistant Professional			75.50	8,771.96
Designer			62.00	7,650.80
CAD Operator			98.50	6,069.37
	Totals		239.25	22,998.25
	Total Labor			22,998.25

INVOICE PAYMENT IS REQUESTED WITHIN 30 DAYS

Reimbursable Expenses

Personal Vehicle Mileage	55.68	
Total Reimbursables	55.68	55.68

	Total this Phase	\$23,053.93
--	-------------------------	--------------------

Phase	130	Permitting
-------	-----	------------

Labor

	Hours	Amount
Principal	52.75	9,301.23
Assistant Professional	68.00	7,389.91
Totals	120.75	16,691.14
Total Labor		16,691.14

Reimbursable Expenses

Filing Fees	302.50	
Total Reimbursables	302.50	302.50

Unit Billing

Postage	11.90	
Total Units	11.90	11.90

	Total this Phase	\$17,005.54
--	-------------------------	--------------------

Phase	140	Survey & Legal Descriptions
-------	-----	-----------------------------

Labor

	Hours	Amount
Survey Technical Manager	6.25	911.06
Surveyor	11.25	1,110.60
Totals	17.50	2,021.66
Total Labor		2,021.66

	Total this Phase	\$2,021.66
--	-------------------------	-------------------

	AMOUNT DUE THIS INVOICE	\$63,439.25
--	--------------------------------	--------------------

Authorized By: Andrew Phillips

Progress Report for Wahoo Creek Watershed Dams Sites



Lower Platte North NRD

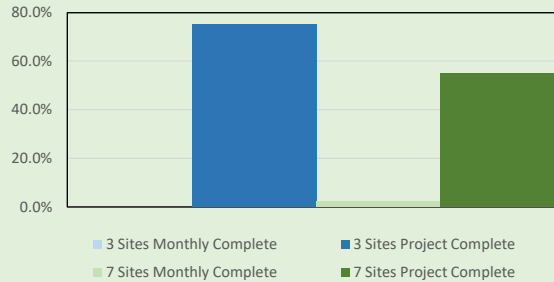
For Work Completed During The Month Of : **August, 2023**
(through 9/9/23)

Project # 018-3423 Dam Site 26A, 26B, &27 Project Phase	Phase Budget	Billings for Month		Project Total Billings to Date	
		Current Earned/Billings	% Completed This Month	JTD Earned/Billings	% Completed Overall
010 - Project Management/Meetings	\$ 23,213		0.0%	\$ 14,067.55	60.6%
020 - Geotechnical Engineering	\$ 224,493		0.0%	\$ 226,775.48	101.0%
030 - Dam Design	\$ 184,885		0.0%	\$ 199,168.83	107.7%
040 - Permitting	\$ 86,634		0.0%	\$ 60,884.18	70.3%
050 - Survey and Legal Descriptions	\$ 11,142		0.0%	\$ 23,636.47	212.1%
060 - Community/Public Participation	\$ -			\$ -	
070 - Construction Services	\$ 171,962			\$ 1,590.75	0.9%
				\$ -	
3 Sites Totals	\$ 702,329	\$ -	0.0%	\$ 526,123.26	74.9%

Project # A18-3423 (separate invoice) Sites 55, 66, 77, 82, 84, 85, &86 Project Phase	Phase Totals	Billings for Month		Project Total Billings to Date	
		Current Earned/Billings	% Completed This Month	JTD Earned/Billings	% Completed Overall
100 - Project Management/Meetings	\$ 60,813	\$ 323.34	0.5%	\$ 33,240.14	54.7%
110 - Geotechnical Engineering	\$ 592,047	\$ 21,034.78	3.6%	\$ 550,817.35	93.0%
120 - Dam Design	\$ 425,202	\$ 23,053.93	5.4%	\$ 399,831.35	94.0%
130 - Permitting	\$ 244,810	\$ 17,005.54	6.9%	\$ 128,932.80	52.7%
140 - Survey and Legal Descriptions	\$ 28,165	\$ 2,021.66	7.2%	\$ 33,529.76	119.0%
150 - Community/Public Participation	\$ 30,000		0.0%	\$ 5,899.20	19.7%
160 - Other	\$ -			\$ -	
170- Construction Services	\$ 603,992			\$ -	0.0%
7 Sites Totals	\$ 1,985,029	\$ 63,439.25	3.2%	\$ 1,152,250.60	58.0%

Billings For Month	\$ 63,439.25
Total Billings To Date	\$ 1,678,373.86
Project Budget	\$ 2,687,358.00
Budget Remaining	\$ 1,008,984.14

% Budget Spent Per Site



Summary Of Work Completed This Month	
Sites 26A, 26B, & 27	Sites 55,66,77,82,84,85, & 86
-Awaiting comments from State for submittal of 26a, 26b and 27	- H&H excavation modeling and sheets, principal spillway modeling, plan sheet updates for 60% submittal for Sites 84, 85, and 86. -Geotechnical analysis, laboratory and report prep for sites 84, 85, and 86. -Project management -Environmental: Coordination with USACE and NRCS, wetland mitigation calculations, permit preparation

Planned Work For Next Month	
Site 26A, 26B, & 27	Sites 55, 66, 77, 82, 84, 85, & 86
-Anticipating comments from the State of Nebraska from October through December	-Update comments from 60% for Site 77 -Update comments for Site 55 and complete 90% submittal -Submit sites 84, 85, & 86

For questions regarding billings, please contact Andrew Phillips at (402) 440-8807 or aphillips@olsson.com

Invoice



601 P St Suite 200
PO Box 84608
Lincoln, NE 68501-4608
Tel 402.474.6311, Fax 402.474.5063

September 27, 2023
Invoice No: 472399

Ryan Chapman
Lower Platte North NRD
PO Box 126
Wahoo, NE 68066-0126

Invoice Total \$1,436.81

Olsson Project # 023-00443 LPNNRD Wahoo Creek Watershed Flood Reduction Project Real Estate Services
Professional services rendered through September 9, 2023 for work completed in accordance with our Agreement dated February 17, 2023.

Phase	100	Real Estate Acquisitions	Hours	Amount
Labor				
Principal			6.25	1,436.81
Totals			6.25	1,436.81
Total Labor				1,436.81
			Total this Phase	\$1,436.81

Billing Limits	Current	Prior	To-Date
Total Billings	1,436.81	22,008.01	23,444.82
Limit			210,000.00
Balance Remaining			186,555.18
	AMOUNT DUE THIS INVOICE		\$1,436.81

Billings to Date	Current	Prior	Total
Labor	1,436.81	19,489.64	20,926.45
Expense	0.00	2,518.37	2,518.37
Totals	1,436.81	22,008.01	23,444.82

Email invoices to: rchapman@lpnnrd.org; selliott@lpnnrd.org and CC: jbreunig@lpnnrd.org

Authorized By: Danielle Allen