

Operations Committee Meeting  
Thursday, August 3, 2023 8:30 AM  
Lower Platte North NRD Office  
P.O. Box 126  
Wahoo, NE 68066

1. UNFINISHED BUSINESS

We have no unfinished business to consider.

2. WILD NE AND OTHER PROGRAMS

We received survey information from Ducks Unlimited on the Wanahoo Wetland area to be renovated (attached). They are asking for comments from the NRD and G & P. The O & M staff have cut many trees in this section of property.

3. OPERATION & MAINTENANCE & OTHER ITEMS

The O & M staff continue to inspect watershed dams, cut and spray trees on our recreational properties. We hired a drone to spray areas along the Clear Creek Levee such as Phragmites, Purple Loosestrife, and trees. Shred the roadsides around Wanahoo. Some time in August, we will start our mowing circuit on dams, recreation area roadsides, levees and ditches.

3.A. Rehabilitation of Cottonwood 21-A, NRCS & HDR

The final contract and scope has been signed between the NRD and HDR. Before the signatures, the contract was reviewed by NRD staff and legal counsel. The Scope was reviewed by the NRCS.

A kick-off meeting is scheduled for August 17th at the NRD office..

3.B. Czechland RV Camping Electrical Upgrades

G & R Electric installed 50 amp service to four RV campsites for \$1150. Now eight of the 11 RV pads have the option of 30 or 50 amp service.

Czechland has three free non-electrical RV pads. If we were to power these pads and/or build additional pads, we would need more service from Butler Public Power. Here are two options from BPPD: Option 1 - Upgrade existing service to 600/800 amps to feed more camper sites.

Butler PPD would set a bigger transformer at no charge to feed the larger load. All additional equipment would be purchased and installed by your electrician. With this option, you may run into voltage drop issues on the secondary side depending on how far away the new sites are.

Option 2- Add additional service to feed new camping sites.

Butler PPD would install underground primary wire @ \$8.38/ft from the existing transformer to the desired location. A 200 amp meter/breaker combo socket would be provided at no additional charge. If a 320 amp service is required, it can be purchased through BPPD for \$818.01. The new service would require a 7 year contract and there is a monthly \$27.50 facility charge (same as the current service).

3.C. Grass Drill Rental Revenue

Grass drill revenues for the first half of 2023.

Rosendahl Farms Seed & Feed (Platte Co.) paid the district \$1,542.21, 18 cooperators used the drill.

Rezac Seed (Saunders) paid the District \$1,193.20, 15 cooperators used the drill.

3.D. Lake Wanahoo Archery Range

Heimann and Schomer met with Henry and Marty Waverka on July 20. We met to go over Henry's Eagle Scout plans to build a 40 yard archery range just northwest of the boat ramp. Henry has secured the Big Game Conservation Association as a sponsor who will provide funding for the materials to build the range and a commitment to maintain the target structures in the future. Heimann has developed an interlocal agreement between the District and BGCA (attached). NRD legal counsel has reviewed the agreement and it will go before the BGCA board on August 8th. Henry plans to build the project on September 23rd and prep/layout work the week before. The NRD will assist by digging holes and providing limestone.

3.E. Buoy System Repair

As reported at the previous Borad meeting, on July 9th, two divers and an assistant from the Great Omaha Scuba Club hooked the new buoy cable system to the anchor points on the lake floor and the collar point buoy. The divers did a great job and enjoyed the experience, it took approximately 3 hours.

The committee discussed a donation to the club for their service.

4. ROCK AND JETTY

We have not received any applications or requests for payments for bank stabilization projects. We did receive a call from a landowner stating the difficulty they are having with the Corps of Engineers in obtaining a 404 permit.

5. LAKE WANAHOO

5.A. Lake Wanahoo Permit Sales

For the month of June, the District received \$10,390.00 in annual park permit revenue. The year by year break down of annual permit sales is listed below.

| <b>Month</b>     | <b>Monthly Total</b> | <b>YTD</b> |
|------------------|----------------------|------------|
| <b>June 2023</b> | \$10390.00           | \$61635.00 |
| <b>June2022</b>  | \$10462.50           | \$62572.50 |
| <b>June 2021</b> | \$10567.50           | \$73162.50 |
| <b>June 2020</b> | \$13030.00           | \$80140.00 |
| <b>June 2019</b> | \$12290.00           | \$67385.00 |

5.B. Lake Wanahoo Camping Revenue

5.C. Clint Johannes Education Building

During the month of July, the building was rented 21 times with 5 NRD events. Revenue for the month was \$1,325. There are only 3 weekend dates available for the rest of the year.

5.D. Noonan / Snitily Wetland Property

Several years ago we made the decision to name segments of our Wanahoo trail system after the names of the landowners who previously owned the property the

trails are located. We have had a request to name the approx. 176 acres of the LPNNRD owned wetland property located in the NW most portion of our Wanahoo land after the Noonan and Snitily families who owned that land dating back to the mid 60's.

6. INFORMATION AND EDUCATION

6.A. Information

6.A.1. Radio & eAds

July's KTIC radio ad featured the three recreation areas. August's ad will feature the upcoming variance deadlines.

July's Wahoo Newspaper e-ad featured an ad for Pork Chop Island. August's ad will also feature the upcoming variance deadlines. Those are attached.

6.A.2. Analytics

The LPNNRD Facebook/Twitter pages, and the website are the fastest and low-cost ways to get information out to the public. Tracking analytics are a way to see if people are seeing the information and what ways seem to be most effective. If you are on Facebook or Twitter, please like, follow, share, or retweet the Lower Platte North NRD posts!

*Total reach/impressions show how many people saw the post/tweet. Engagements include likes, comments, shares/retweets and link clicks.*

| <b>FACEBOOK</b>   | <b>Total Reach</b> | <b>Engagements</b> | <b>Followers</b> |
|-------------------|--------------------|--------------------|------------------|
| <b>July 2023</b>  | 9260               | 428                | 1,481            |
| <b>June 2023</b>  | 7,626              | 1,252              | 1,474            |
| <b>May 2023</b>   | 4,103              | 184                | 1,465            |
| <b>April 2023</b> | 6,135              | 399                | 1,458            |

| <b>TWITTER</b>   | <b>Total impressions</b> | <b>Engagements</b> | <b>Followers</b> |
|------------------|--------------------------|--------------------|------------------|
| <b>July 2023</b> | 2,072                    | 99                 | 404              |
| <b>June 2023</b> | 1,111                    | 56                 | 400              |
| <b>May 2023</b>  | 638                      | 10                 | 400              |

|                   |       |    |     |
|-------------------|-------|----|-----|
| <b>April 2023</b> | 1,140 | 56 | 400 |
|-------------------|-------|----|-----|

**Top Posts on Facebook and Twitter:**

- Starry night at Lake Wanahoo flyer
- Wildflowers and Wine flyer
- Butler County Fair/giveaway promotion
- Buoy system dive team pictures
- 4R's event at ENREC/Nitrogen Certification

| <b>W<br/>E<br/>B<br/>S<br/>I<br/>T<br/>E</b> | <b>Users</b> | <b>Traffic Channel</b>   | <b>Top Pages</b>  | <b>Devices</b>                                  |
|--|--------------|--|---|---|
| <b>July 2023</b>                             | 2,409        | Organic 71.8%<br>Direct 21.7%<br>Referral 5.2%<br>Social 1.3%  | Lake Wanahoo Home<br>Czechland Lake Downloads<br>Outdoor Recreation | Mobile 62.2%<br>Desktop 36.2%<br>Tablet 1.5%    |
| <b>June 2023</b>                             | 2,523        | Organic 72.7%<br>Direct 20.8%<br>Referral 5.4%<br>Social 1%    | Lake Wanahoo Home<br>Czechland Lake<br>Outdoor Recreation Downloads | Mobile 65.2%<br>Desktop 33.1%<br>Tablet 1.7%    |
| <b>May 2023</b>                              | 2,755        | Organic 75.1%<br>Direct 17.4%<br>Referral 6.6%<br>Social 1%    | Lake Wanahoo Home<br>Czechland Lake<br>Outdoor Recreation Downloads | Mobile 65.42%<br>Desktop 32.8%<br>Tablet 1.78%  |
| <b>April 2023</b>                            | 1,517        | Organic 68.8%<br>Direct 18.4%<br>Referral 10.9%<br>Social 1.9% | Lake Wanahoo Home<br>Czechland Lake Downloads<br>Outdoor Recreation | Mobile 58.40%<br>Desktop 40.34%<br>Tablet 1.25% |

*Traffic channels: organic traffic means they use a search engine then choose an option that includes lpnnrd.org, direct traffic means they type in lpnnrd.org directly (or have it bookmarked), and referral traffic is any other traffic not from a search engine or social (such as a link from another site).*

6.B. Education

6.B.1. Past events

**July 7th:** Coffee Lakeside had two attendees. It rained, so I ended up doing the presentation indoors.

**July 11th-12th:** I&E meeting in Ord.

**July 17th:** Starry Night at the Lake event. We had close to 35 people attend this

event.

**July 19th:** Wildflowers and Wine Night drew in 15 people. Attendance was a lot lower than the past two years.

**July 21st:** Mothing Bioblitz event. UNL brought 6 summer scholar students who are in the entomology field. No members of the public attended, but the students, myself, and professor Golick had a great time. I'm hoping to do another bioblitz soon.

**July 27th:** Mead Public Library, story time hour. Cancelled.

6.B.1.a. Future Events

- August 17th: Coffee Lakeside: Screentime.
- August 23rd: Science and Scenes with Alissa Hansen.
- August 29th: State Fair education day

During August, I am preparing for the new school year (flyer attached). We are also getting ready to host our next CEO student, Cort, who will be with us all of the fall semester.

## 7. RURAL WATER SYSTEMS

### 7.A. Colon System

The Colon RWD has been carrying an outstanding balance of \$344.20 for the Ralph Palmer account. Of that amount, \$230.20 is for water services, the remaining is sewer service due to the Village of Colon. Efforts to contact/reach Mr. Palmer by both NRD and Colon haven't succeed; word is he moved out of state. The RWD will need to write off the water expense.

Colon RWD completed the tri-annual lead and copper testing the past month. Once results are received from the lab results will be sent to participating homeowners; five sample sites are utilized, all samples must be taken from faucets that are regularly used for drinking, i.e. kitchen, bath.

The RWD conducted 6 locate requests the past month. Routine monthly sampling completed, bills mailed 7/31.

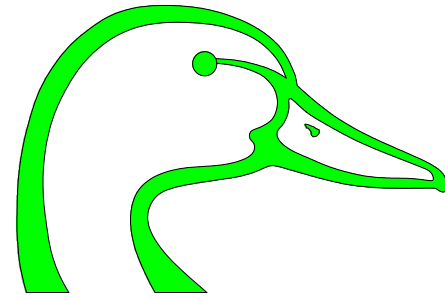
### 7.B. Bruno System

The Bruno water tower radio system needs to be upgraded; the signal from the tower to the meter pit to open the valve is not working so to fill water tower requires manually operating the valve. The Bruno RWD is not liable for the radio system outside of the meter pit, therefore, repair/replacement costs fall to the Village of Bruno.

The RWD conducted 2 locate requests, completed routine sampling and bills mailed 7/31.

### 7.C. Other

#### 7.C.1. REVIEW FISCAL YEAR '24 OPERATIONS, I&E, WANAHOO & RURAL WATER BUDGET



DUCKS UNLIMITED

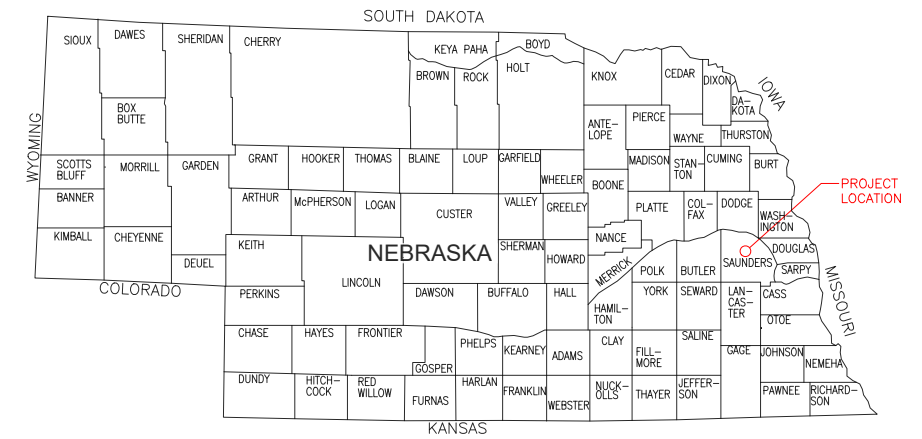
# DUCKS UNLIMITED

PROJECT

## LAKE WANAHOO LPNDRD ENHANCEMENT

LOCATED IN THE NW<sup>1</sup>/<sub>4</sub> OF SECTION 15  
TOWNSHIP 15N, RANGE 7W, 6TH P.M.  
SAUNDERS COUNTY, NEBRASKA

IN COOPERATION WITH  
LPNDRD, NGPC, NAWCC



|     |                         |
|-----|-------------------------|
| 101 | SPECIFICATIONS          |
| 102 | GENERAL CONDITIONS      |
| 201 | SUPPLEMENTAL CONDITIONS |
| 203 | MOBILIZATION            |
| 206 | EXCAVATION              |
|     | CONSTRUCTED TOPOGRAPHY  |

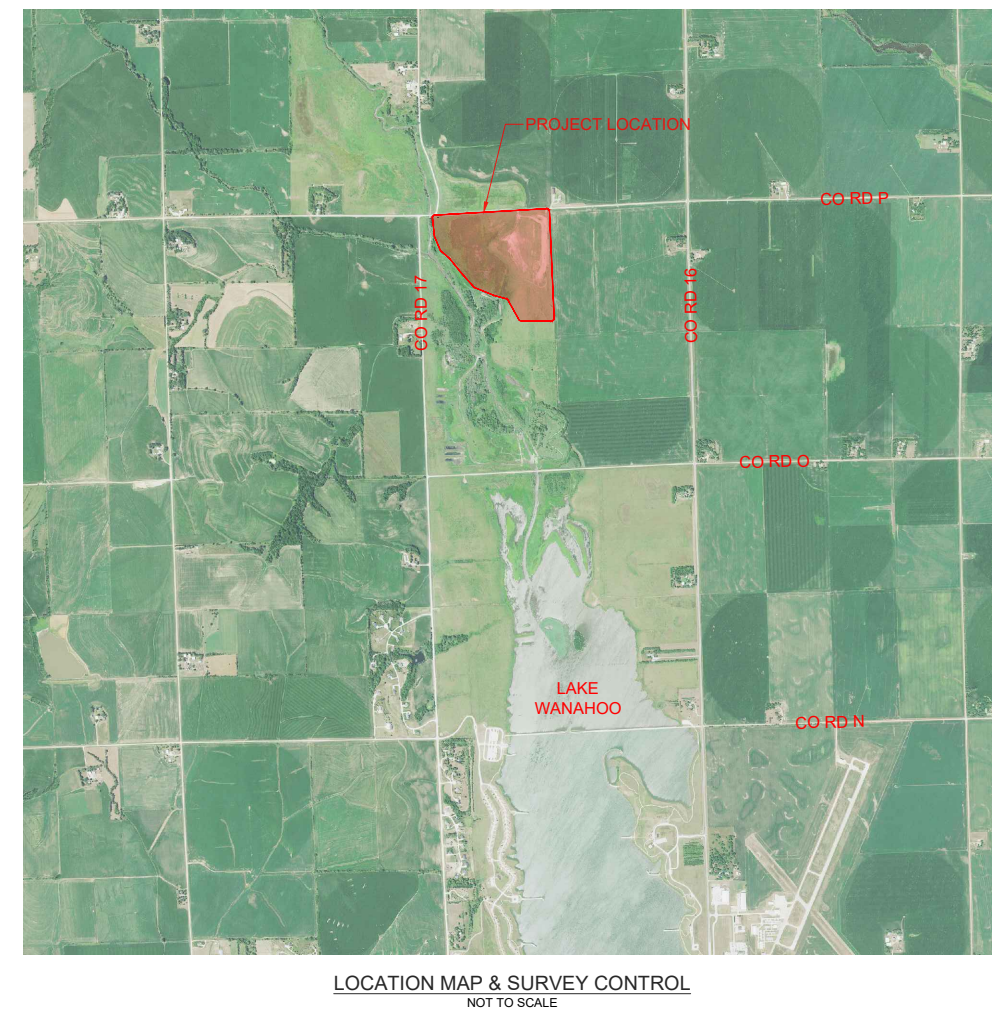
**PLAN INDEX**

|   |                          |
|---|--------------------------|
| 1 | LOCATION & VICINITY MAPS |
| 2 | OVERALL PLAN             |
| 3 | EXCAVATION PLAN          |
| 4 | ROAD DITCH FILL PLAN     |

**ESTIMATED QUANTITIES**

|                  |              |
|------------------|--------------|
| MOBILIZATION     | 1 L.S.       |
| EXCAVATION       | 9800 C.Y.-P* |
| ROAD DITCH FILL  | 750 C.Y.-P*  |
| SOUTH DITCH FILL | 520 C.Y.-P*  |

\*PAYMENT WILL BE BASED ON THIS PLAN QUANTITY



ALL WRITTEN SCALES ARE ACCURATE ON 24x36 INCH SHEETS

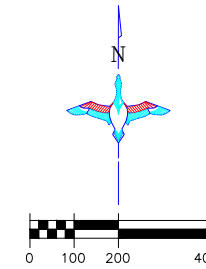
UTILITIES NOTE: BEFORE THE START OF CONSTRUCTION, THE OWNER OF ANY UTILITIES INVOLVED MUST BE NOTIFIED. THE CONTRACTOR IS RESPONSIBLE FOR GIVING THIS NOTICE BY CALLING "DIGGER'S HOTLINE" AT (800) 331-5666 AT LEAST 48 HOURS PRIOR TO ANY WORK.

DJ REGIONAL ENGINEER:  
BEN CHAVEZ  
2121 N. WEBB ROAD, SUITE 309  
GRAND ISLAND, NE 68803  
(308) 379-4974

K:\Land Projects\NE-94-2 Lake Wanhoo\Design\NE-94-2 Lake Wanhoo.dwg

PRELIMINARY NOT FOR CONSTRUCTION

|                              |                                 |                 |
|------------------------------|---------------------------------|-----------------|
|                              | PROJECT NO. NE-94-2             | DESIGNED BY: BC |
|                              | LAKE WANAHOO LPNDRD ENHANCEMENT | DRAWN BY: BC    |
| GREAT PLAINS REGIONAL OFFICE | LOCATION & VICINITY MAPS        | SURVEYED BY: BC |
| DATE: 7/27/23                | SHEET NO. 1 OF 4                | CHECKED BY: CC  |
|                              | APPROVED BY: CC                 | APPROVED BY:    |



OVERALL PLAN VIEW  
SCALE 1"=200'

ABBREVIATIONS LIST

- BTM. = BOTTOM
- C.L. = CENTER LINE
- CMP = CORRUGATED METAL PIPE ROUND
- CONC. = CONCRETE
- E = EASTING COORDINATE OR EAST
- ELEV. = ELEVATION
- EX. = EXISTING
- EXIST. = EXISTING
- GA. = GAUGE
- INV = INVERT
- LAT = LATITUDE (WGS84)
- LONG = LONGITUDE (WGS84)
- N. = NORTHING COORDINATE OR NORTH
- OHE = OVERHEAD ELECTRIC
- P.C. = POINT OF INTERSECTION
- P.I. = POINT OF INTERSECTION
- P.T. = POINT OF TANGENCY
- R### = RADIUS LENGTH
- RCP = REINFORCED CONCRETE PIPE
- RD = ROAD
- REQ'D = REQUIRED
- R.O.W. = RIGHT OF WAY
- S = SOUTH
- SHLD = SHOULDER
- TBM = TEMPORARY BENCHMARK
- TEL = TELEPHONE/COMMUNICATIONS
- UG = UNDERGROUND
- W = WEST OR WITH

\*NOTE: NOT ALL ABBREVIATIONS IN THIS LIST APPEAR ON THESE PLANS.

GENERAL NOTES

1. ONE HALF FOOT CONTOUR INTERVAL SHOWN BASED ON LIDAR DATA.
2. 2020 1 METER RESOLUTION AERIAL IMAGERY IS SHOWN.
3. ITALICIZED TEXT DENOTES EXISTING FEATURE OR EXISTING ELEVATION.
4. SPOT ELEVATIONS INDICATED BY  $\phi$  XXXX.X ARE RANDOMLY LOCATED AND ARE BASED ON SURFACE MODEL ELEVATIONS.

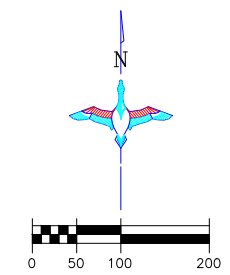
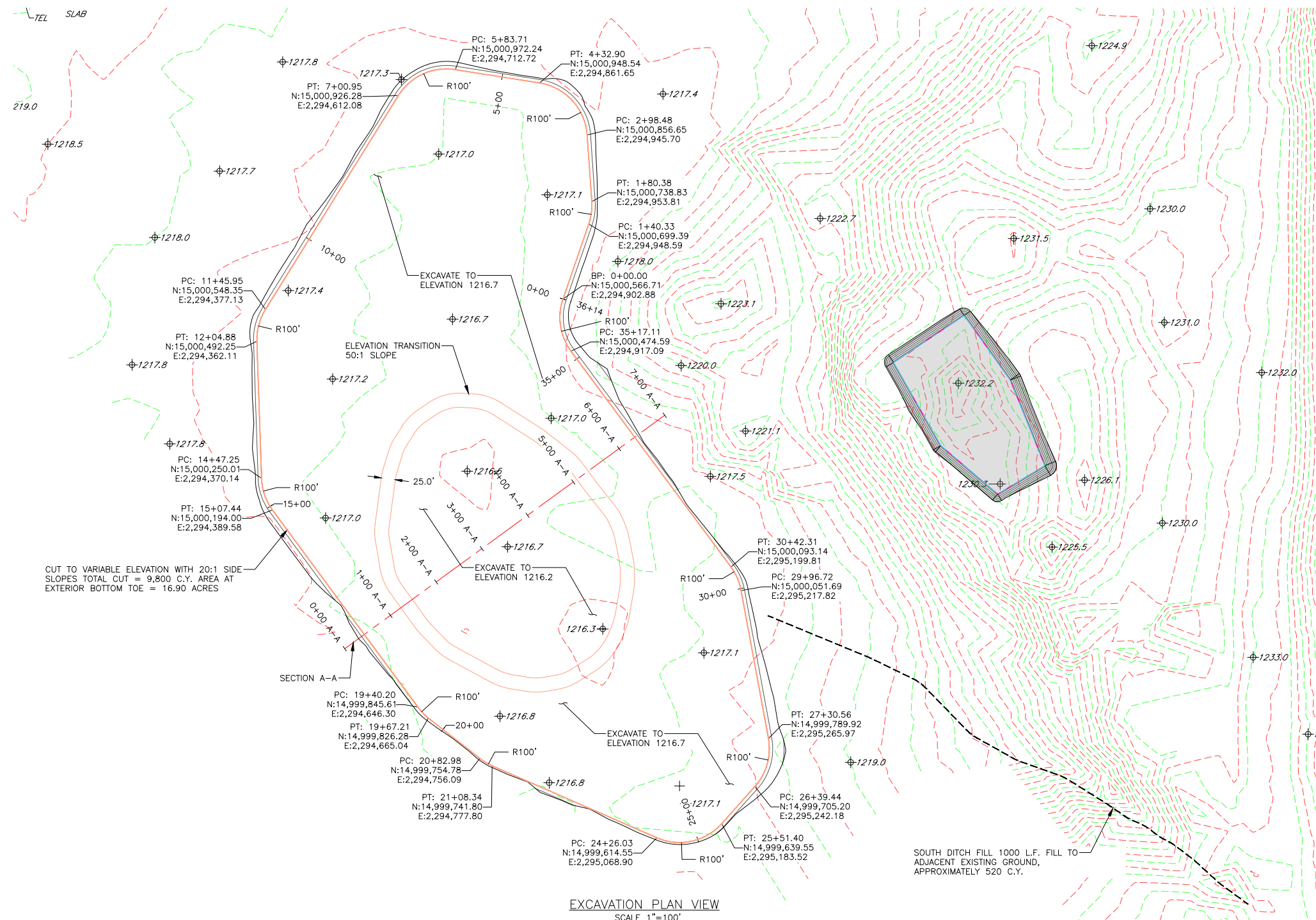
THIS MATERIAL, DATA AND INFORMATION IS THE PROPERTY OF DUCKS UNLIMITED, INC. IT MAY NOT BE USED OR REPRODUCED FOR ANY PURPOSE WITHOUT THE PRIOR WRITTEN CONSENT OF AN AUTHORIZED AGENT OF DUCKS UNLIMITED, INC. DUCKS UNLIMITED, INC. MAKES NO REPRESENTATION OR WARRANTY OF ANY KIND REGARDING THIS MATERIAL, DATA AND INFORMATION, INCLUDING, BUT NOT LIMITED TO, THE ACCURACY OF THE MATERIAL, DATA AND INFORMATION OR ITS SUITABILITY FOR ANY PURPOSE. ALL USE OF THE MATERIAL, DATA AND INFORMATION IS AT THE USER'S SOLE RISK. BY USING ANY OF THIS MATERIAL, DATA AND INFORMATION, USER AGREES THAT DUCKS UNLIMITED, INC. IS NOT RESPONSIBLE FOR THEIR USE OF THE MATERIAL, DATA AND INFORMATION OR THE RESULTS THEREOF.

HORIZONTAL AND VERTICAL CONTROL OPUS SOLUTION— COORDINATES ARE UTM ZONE 14 GRID COORDINATES IN US FEET [NAD83]. THEY WERE ESTABLISHED FROM THE WGS84 ELLIPSOID WITH INFORMATION FROM A TRIMBLE R10 SURVEY GRADE GPS RECEIVER ON SEPTEMBER 9, 2022 AT DUCKS UNLIMITED CONTROL POINT DU-303-22 AND CALIBRATED TO AN OPUS POSITION OCCUPIED FOR 3 HOURS AND 2 MINUTES AND SENT TO NGS FOR SOLUTION. THE VERTICAL CONTROL CAME FROM THE SAME SOLUTION USING GEOID 18 CONUS IN THE NAVD83. THE FULL OPUS SOLUTION REPORT IS ON FILE AT THE DUCKS UNLIMITED ENGINEERING DEPARTMENT IN GRAND ISLAND, NEBRASKA.

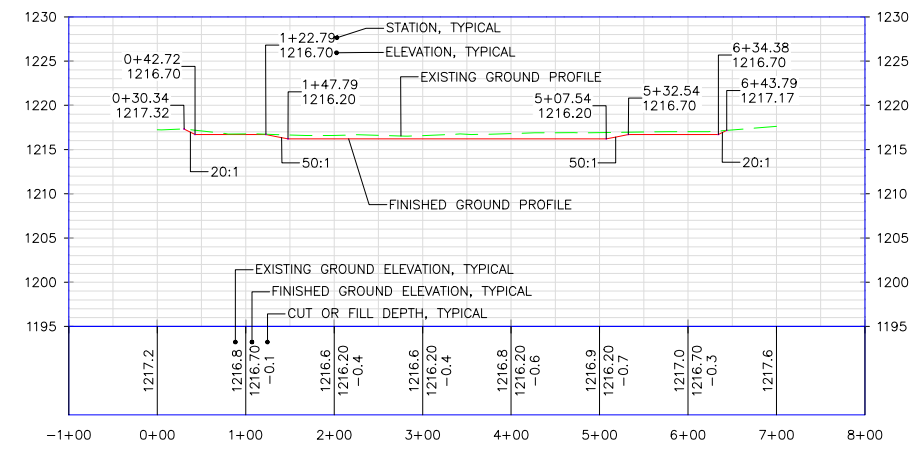
K:\Land Projects\NE-94-2 Lake Wanhoo\Design\NE-94-2 Lake Wanhoo.dwg

PRELIMINARY NOT FOR CONSTRUCTION

|                              |   |                 |
|------------------------------|---|-----------------|
|                              | PROJECT NO. NE-94-2                         | DESIGNED BY: BC |
|                              | LAKE WANHOO LPNRRD ENHANCEMENT OVERALL PLAN | DRAWN BY: BC    |
| GREAT PLAINS REGIONAL OFFICE |   | SURVEYED BY: BC |
| DATE: 7/27/23                | SHEET NO. 2 OF 4                            | CHECKED BY: CC  |
|                              | APPROVED BY: CC                             | APPROVED BY:    |



EXCAVATION PLAN VIEW  
SCALE 1"=100'



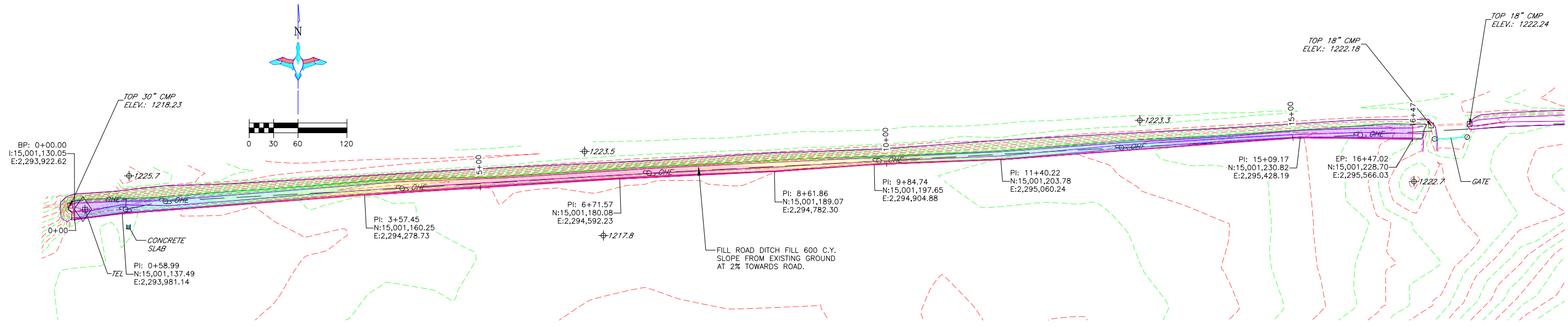
SECTION A-A  
HORIZONTAL SCALE 1" = 100'  
VERTICAL SCALE 1" = 10'

THIS MATERIAL, DATA AND INFORMATION IS THE PROPERTY OF DUCKS UNLIMITED, INC. IT MAY NOT BE USED OR REPRODUCED FOR ANY PURPOSE WITHOUT THE PRIOR WRITTEN CONSENT OF AN AUTHORIZED AGENT OF DUCKS UNLIMITED, INC. DUCKS UNLIMITED, INC. MAKES NO REPRESENTATION OR WARRANTY OF ANY KIND REGARDING THIS MATERIAL, DATA AND INFORMATION, INCLUDING, BUT NOT LIMITED TO, THE ACCURACY OF THE MATERIAL, DATA AND INFORMATION OR ITS SUITABILITY FOR ANY PURPOSE. ALL USE OF THE MATERIAL, DATA AND INFORMATION IS AT THE USER'S SOLE RISK. BY USING ANY OF THIS MATERIAL, DATA AND INFORMATION, USER AGREES THAT DUCKS UNLIMITED, INC. IS NOT RESPONSIBLE FOR THEIR USE OF THE MATERIAL, DATA AND INFORMATION OR THE RESULTS THEREOF.

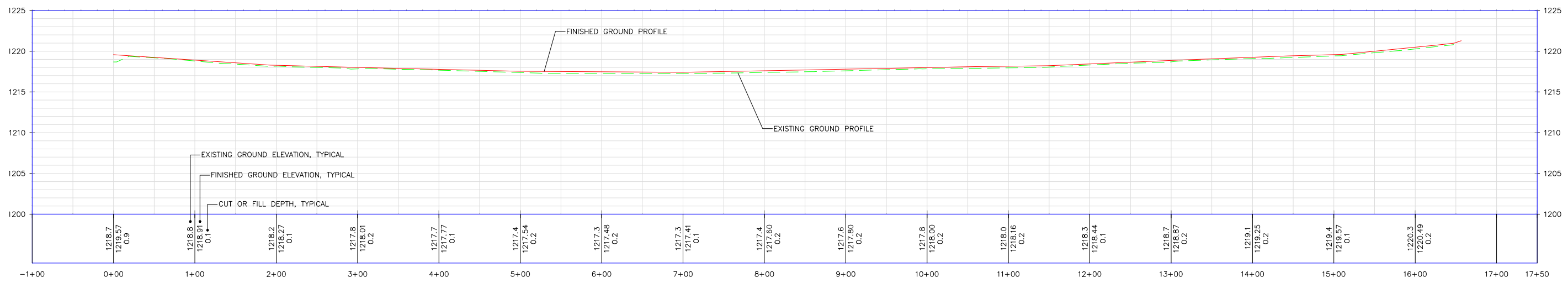
PRELIMINARY NOT FOR CONSTRUCTION

|                              |  |                 |
|------------------------------|--|-----------------|
|                              | PROJECT NO. NE-94-2                            | DESIGNED BY: BC |
|                              | LAKE WANAHOO LPNDR ENHANCEMENT EXCAVATION PLAN | DRAWN BY: BC    |
| GREAT PLAINS REGIONAL OFFICE | SURVEYED BY: BC                                | CHECKED BY: CC  |
| DATE: 7/27/23                | SHEET NO. 3 OF 4                               | APPROVED BY: CC |

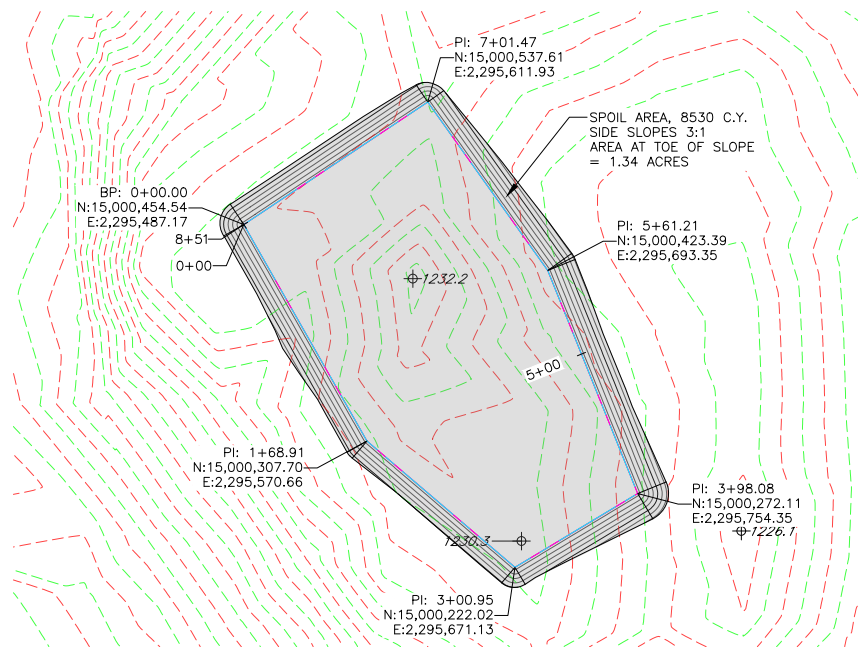
K:\Land Projects\NE-94-2 Lake Wanhoo\Design\NE-94-2 Lake Wanhoo.dwg



ROAD DITCH FILL PLAN VIEW  
SCALE 1"=60'



ROAD DITCH FILL PROFILE  
HORIZONTAL SCALE 1" = 60'  
VERTICAL SCALE 1" = 6'



SPOIL AREA PLAN VIEW  
SCALE 1"=60'

THIS MATERIAL, DATA AND INFORMATION IS THE PROPERTY OF DUCKS UNLIMITED, INC. IT MAY NOT BE USED OR REPRODUCED FOR ANY PURPOSE WITHOUT THE PRIOR WRITTEN CONSENT OF AN AUTHORIZED AGENT OF DUCKS UNLIMITED, INC. DUCKS UNLIMITED, INC. MAKES NO REPRESENTATION OR WARRANTY OF ANY KIND REGARDING THIS MATERIAL, DATA AND INFORMATION, INCLUDING, BUT NOT LIMITED TO, THE ACCURACY OF THE MATERIAL, DATA AND INFORMATION OR ITS SUITABILITY FOR ANY PURPOSE. ALL USE OF THE MATERIAL, DATA AND INFORMATION IS AT THE USER'S SOLE RISK. BY USING ANY OF THIS MATERIAL, DATA AND INFORMATION, USER AGREES THAT DUCKS UNLIMITED, INC. IS NOT RESPONSIBLE FOR THEIR USE OF THE MATERIAL, DATA AND INFORMATION OR THE RESULTS THEREOF.

PRELIMINARY NOT FOR CONSTRUCTION

|               |                                |                 |
|---------------|--------------------------------|-----------------|
|               | PROJECT NO. NE-94-2            | DESIGNED BY: BC |
|               | LAKE WANAHOO LPNDR ENHANCEMENT | DRAWN BY: BC    |
|               | ROAD DITCH FILL PLAN           | SURVEYED BY: BC |
|               |                                | CHECKED BY: CC  |
| DATE: 7/27/23 | SHEET NO. 4 OF 4               | APPROVED BY: CC |

K:\Land Projects\NE-94-2 Lake Wanhoo\Design\NE-94-2 Lake Wanhoo.dwg

**AGREEMENT FOR  
LAKE WANAHOO ARCHERY RANGE  
FOR PUBLIC USE BETWEEN  
LOWER PLATTE NORTH NATURAL RESOURCES DISTRICT  
BIG GAME CONSERVATION ASSOCIATION**

This Agreement (hereinafter named Agreement") is made by and among the following Parties:

Lower Platte North Natural Resources District (LPNNRD)  
Big Game Conservation Association (BGCA)

All of such parties hereinafter being referred to collectively as "Partners".

WHEREAS:

LPNNRD in coordination with Eagle Scout Henry Waverka and Troop 405 has developed an archery range on Lake Wanahoo publicly owned property.

BGCA's mission is to provide bi-annual maintenance as a co-sponsor to the archery range to ensure that the range is safe, hazard free and functional for all public use which contributes to our recreational, hunting heritage and education.

This agreement is not intended to create either a legal partnership nor a joint venture between the Partners. Rather, the document shall prescribe responsibilities for each entity in reaching their shared goal of providing certain recreational activities on Lake Wanahoo.

THEREFORE, in consideration of the foregoing recitals and their mutual covenants hereinafter expressed, the Partners agree as follows:

**1. Authority:**

The Partners desire to work together to enhance a designated area on Lake Wanahoo property for a public archery range and make the most efficient use of their respective powers by cooperating on a basis of mutual advantage. In furtherance of this cooperative effort the Parties desire to enter into this Agreement with one another for joint and cooperative action for any power or powers, privileges or authorities exercised or capable of exercise individually by them. It is understood, however, that the LPNNRD is the title holder to the reach estate and thus shall have the discretion to modify or otherwise limit the activities located within the designated area provided that it in doing so it cannot impose additional responsibilities upon BGCA without their express consent.

**2. Archery Range Establishment**

The LPNNRD will allow Henry Waverka and Troop 405 to:

- a. Install four (4) archery range targets at 10, 20, 30, and 40 yards.
- b. BGCA will provide all materials for construction of the archery range.

**3. Archery Range Maintenance**

BGCA agrees to provide needed repairs and maintenance to the archery range targets. "Annual Maintenance" shall mean maintaining the structures (targets) each Spring (March) and Summer (August) before Fall archery seasons assuring, they are safe to the public and equipment. If proper maintenance is not completed in a timely manner LPNNRD will notify BGCA of needed repairs and/or maintenance and after 15 days if not completed, the LPNNRD will have the discretionary option to do the maintenance and invoice BGCA. Alternatively, the LPNNRD shall have the authority to discontinue this activity.

LPNNRD will provide maintenance to the grounds such as mowing, spraying, and additional materials such as rock.

**4. Funding:**

All labor and costs associated with establishing a 40-yard archery range will be provided by Troop 405 and BGCA. BGCA and/or another sponsor also agree to provide all costs required for archery target repairs and maintenance.

**5. Effective Date:**

This Agreement becomes effective upon execution by both Partners. The original copy of this Agreement will be maintained as part of the records of LPNNRD, with a copy being mailed to BGCA.

**7. Duration of Agreement:**

This Agreement shall extend from the date of execution by both Partners and will remain in effect until one or both Partners wish to terminate the Agreement. This Agreement may be terminated at any time upon a 30-day written notice. Upon termination, BGCA agrees find another sponsor to do the maintenance upkeep on the archery range and leave subject area in good repair, as directed by LPNNRD, within 30 days after receiving notice of agreement termination. If not completed within the 30-day period, LPNNRD will complete needed tasks at a fair and reasonable cost then bill BGCA.

**8. Amendment of Agreement:**

This Agreement may be amended at any time, subject to written approval of such amendment by both Partners, provided that no amendment shall, directly or indirectly, affect or impair any contracts or agreements agreed upon in writing prior to the effective date of such amendment.

**9. Indemnification:**

The Partners assume no liability under this Agreement unless expressly accepted herein. Each party agrees to defend the other from and against all liabilities, obligations, losses, damages, claims, and demands arising from the acts of its respective officers, agents, or employees.

**10. Default and Dispute:**

If any party to this agreement believes that the other is in default of any term or condition of this Agreement, said party shall send written Notice of Default to such party. Failure of the defaulting party to cure a default under this Agreement within thirty (30) days after receipt of the written notice thereof, shall entitle the other party to proceed to take action necessary to cure the default and bill the defaulting party for all costs associated with such cure. If in the event that any dispute or controversy arising out of or relating to this Agreement occurs, the parties shall mutually attempt to mediate such dispute. If no resolution is reached at mediation, the parties may then proceed with a court action against the other at the Saunders County District Court.

**IN WITNESS WHEREOF**, each Partner has caused this Agreement to be executed by its duly authorized officer as of the date and year shown below.

**Lower Platte North Natural Resources District**

By: \_\_\_\_\_

Title: \_\_\_\_\_

Date: \_\_\_\_\_

**Big Game Conservation Association**

By: Chris Edwards \_\_\_\_\_

Title: Big Game Conservation Association Committee Member

Date: \_\_\_\_\_



# *Pork Chop Island*

Your secluded island awaits.



# Park Chop Island

Your secluded island awaits  
at Lake Wanahoo.



# VARIANCE REQUESTS

Variance requests for new and expanded irrigated acres in Restricted Development Areas and Non-Hydrologically Connected Areas are due by **August 15**. Hydrologically Connected Areas are due by **September 15**. For more information visit [lpnnrd.org](http://lpnnrd.org) or call 402-443-4675.



LOWER PLATTE NORTH  
Natural Resources District

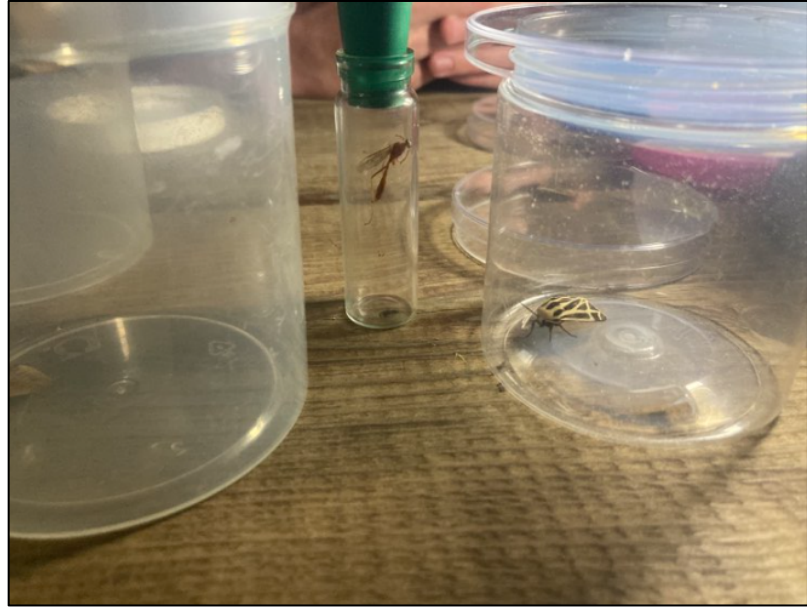
# VARIANCE REQUESTS

Variance requests for new and expanded irrigated acres in Restricted Development Areas and Non-Hydrologically Connected Areas are due by **August 15**. Hydrologically Connected Areas are due by **September 15**. For more information visit [lpnrd.org](http://lpnrd.org) or call 402-443-4675.



LOWER PLATTE NORTH  
Natural Resources District





Tiger moths, Ipsilon Dart Moth, Western bean cutworm moth, western yellow striped armyworm moth, double banded grass veneer, and more.

16 different moths in total.



LAKE WANAHOO

**Lake Wanahoo Mothing Bioblitz**

JUL 21, 2023 - JUL 28, 2023

Happy (almost) National Mothing Week! Join us for our very first Mothing Bioblitz this Friday, July 21st, at Lake Wanahoo in Wahoo, Nebraska. Starting at 8:00 p.m. at the Clint Johannes Education Building, where we will learn about moths and then take our adventures outside! Can't join us Friday night? You can head to the [Read More >](#)

[Project Journal](#)

Overview

16  
OBSERVATIONS

8  
SPECIES

1  
IDENTIFIER

2  
OBSERVERS

Stats

Recent Observations ➔ View All

**Nais Tiger Moth**  
*Apantesis nais*  
👤 1 11 days ago

**Harneessed Tiger Moth**  
*Apantesis phalerata*  
👤 1 11 days ago

**Ipsilon Dart Moth**  
*Agrotis ipsilon*  
👤 1 11 days ago

**Genus Hypena**  
👤 1 11 days ago