

Operations Committee Meeting
Thursday, April 1, 2021 8:30 AM
Lower Platte North NRD Office
P.O. Box 126
Wahoo, NE 68066

1. UNFINISHED BUSINESS

We have no unfinished business to attend to.

2. WILD NE AND OTHER PROGRAMS

A prescribed burn for the Wanahoo Wildlife area in Section 15 is planned, weather permitting.

Heimann has reached out to the Big Game Conservation Group and the Wahoo Chapter of Ducks Unlimited asking if they would have some interest in a volunteer day to eradicate trees in certain areas.

Scott Luedtke is exploring grant opportunities for tree removal on the Wanahoo areas.

3. OPERATION & MAINTENANCE & OTHER ITEMS

The O & M crew burned large tree piles at Czechland Lake. Dam inspections after the recent rains. Equipment and vehicle maintenance gearing up for spring/summer.

Assisted with a water line leak repair at the dump station. Continue to cut and treat trees on all our areas.

A. Wanahoo Stilling Basin - (FEMA)

Valley Corp ran pumps to see if they could lower the water table enough for drawing down the stilling basin area safely for the welding of the gabion basket brackets. They were not successful enough to lower the water so, they are discussing alternate "B" Gabion Basket Connection (attached) of which will not be required to lower the water level as much. Discussion involves price. The District is monitoring the Lake level and attempting to get it down one foot and when the water isn't blowing over the weir Valley Corp will begin work on the baffles and then filters #1 and #2.

Attached is the third pay application which was sent too late for the previous Board meeting. We should expect pay application #4 before our April Board meeting.

B. Western Sarpy Clear Creek O & M Manuals & Easements

The Clear Creek Levee O & M manual is still under review within the Corps of Engineers and between LPN and LPS NRD's. Staff has forwarded comments to the COE.

Heimann will register the Army's easement with the Register of Deeds after Board meeting.

There is also an easement with the State of Nebraska, Dept. of Military, within Camp Ashland that was signed by the State but not by the NRD and it also has not been registered with the Deeds Office. Heimann has requested the State to research this.

- C. Conservation Trees
Currently the District has ordered 11,275 trees and of those 5,245 will be planted by the District for 12 cooperators.
- D. Haying on Recreational Grounds
Maps have been put together for haying lands at Czechland, Homestead and Lake Wanahoo. See the five attached maps.
We will advertise for three weeks, send packets to interested cooperators and open bids at our next Operations meeting April 29th.
- E. Wahoo Creek Watershed Water Quality Plan Phase II (Czechland Lake)
We have been in contact with Mark Mainelli, Saunders County Engineer and acting Road Superintendent about completing the Czechland Lake Shoreline/Road Stabilization Project this summer. Saunders County is securing a 404 permit (attached) and will also contribute all engineering services. The total Project estimate is \$299,103 (attached). The plan is that LPNNRD will provide the rip-rap and fabric (\$231,955) and the County will provide engineering and do the construction work. We plan to use available EPA 319 and NET grant funding to assist with at least 60% of our expense.
- F. Nebraska Land Trust
The Nebraska Land Trust is an organization that secures conservation easements on properties throughout the State of Nebraska. The conservation easements protect lands in their natural state preserving them from future development.
David Sands is the administrator of the NE Land Trust and he operates under a Board of Directors (list attached) of many walks of life, agencies and organizations. Our District can have up to three people listed on the Board with only one of those individuals capable of voting at one time. Since John Hannah was not reelected and was a member of the NE Land Trust, would there be a current board member who would have interest in joining the NE Land Trust Board. Currently Nancy Meyer and Bob Heimann are listed members.

4. ROCK AND JETTY

Dave Medinger in Butler County did some repair work on jetties last summer in which we assisted and plans to continue.

5. LAKE WANAHOO

A. Lake Wanahoo Permit Sales

For the month of March, as of 3/31, the District has received \$8,755.00 in annual permit revenue. The year by year comparison table is below.

B. Calender Year	C. Permits Sold	D. Monthly Sales	E. YTD Toals
F. 2021	G. 537	H. \$8,755.00	I. \$33,692.50
J. 2020	K. 324	L. \$5,357.50	M. \$27,542.50
N. 2019	O. 259	P. \$4,455.00	Q. \$29,090.00

R. Lake Wanahoo Camping Revenue

As of 3/31, the District has received \$1,290.50 in camping revenue.

S. Lake Wanahoo Education Building

During the month of March, the building was rented 16 times. 2 NRD meetings, 1 youth event. Revenue for month of December: \$900

T. General Lake Wanahoo Update

Staff has been working on getting the dump station operational after a line break was found below one of the flush out hydrants. Richard Mullen has returned from Arizona and will begin work on 4/1. Gottschalk and Schomer will be reviewing applications for summer Wanahoo Technicians. We only have one returning employee from last year. We are looking to replace the four past employees not returning as well as at least one person for the guard shack. The new trails have been mapped and work will begin at the start of April.

6. INFORMATION AND EDUCATION

A. Information

1. Radio & eAds

The KTIC ad and Wahoo Newspaper e-ad from March is attached. The ads promoted our tree sales

2. Analytics

LPNNRD Website: The same top 5 viewed pages remained the same in March. We continue to receive most of our traffic from internet searches with keywords: lower platte north nrd, lower platte north, lake wanahoo, wanahoo nrd, czechland and others. We are also receiving traffic from outdoornebraska.org, nrdnet.org, visitnebraska.com, wahoo-ashland-waverly.com and other sites. There were 50 clicks to our site from Facebook and 3 from Twitter.

3. LPNNRD Website	4. # of Users	5. Top Pages/Views	6. Viewing Device
7. February 2021	8. 1,032	9. Home 708 Lake Wanahoo 480 Forestry 209 Downloads 171 Certification Test 144	10. Desktop 61.53% Mobile 34.4% Tablet 4.07%
11. March 2021	12. 1,696	13. Home 1,577 Lake Wanahoo 833	14. Desktop 56.81% Mobile 39.78%

			Certificati on Test 245 Forestry 227 Download s 225	Tablet 3.42%
--	--	--	---	-----------------

15.

LPNNRD Facebook: Our top Facebook posts included: docks are back in at Czechland Lake and Lake Wanahoo, press release and information about the new educational series "Coffee, Lakeside"

16. Fac eb oo k	17. T o t a l V i e w s	18. T o t a l R e a c h	19. To tal En ga ge d Us ers	20. Foll ow ers
21. Fe bru ary 20 21	22. 1 3 4 7	23. 1 3 1 3	24. 37	25. 12 17
26. Ma rch 1- 28, 20 21	27. 3 , 1 0 8	28. 2 , 8 4 3	29. 72	30. 1,1 92

31.

LPNNRD Twitter: Our top posts included information about the first Coffee, Lakeside event; limited availability remaining for tree and shrub orders; docks are back in at Czechland Lake and Lake Wanahoo.

32. T wi tt er	33. Imp ress ions	34. Enga geme nts	35. Fo llo we rs	3
37. Fe br ua ry	38. 174 8	39. 49	40.	4

	20			
	21			
42. M	43. 331	44. 90	45. 33	4
ar	1		0	
ch				
1-				
28				
,				
20				
21				
47.				

As a reminder, please Like and Share our Facebook and Twitter posts if you have an account - this helps us to reach more people!

48. Advertising with News Channel Nebraska

Last year we shared the Lake Wanahoo video during the start of the pandemic with News Channel Nebraska and had a great response! This year we have two new videos (Projects video, Operations and Maintenance video) that we would like to share with News Channel Nebraska.

Attached is the coverage map for News Channel Nebraska and it can also be downloaded through streaming devices.

The rates (same as last year) for running the videos are also attached:

News - \$475 per month

Ag - \$400 per month

B. Education

1. Education Programs

- The first Coffee, Lakeside is taking place today at 9 o'clock.
- Kyle Arp, EMS captain here in Wahoo, taught safety and first aid to our survival club this month.
- K-6 at Saint Wenceslaus will be coming out to Lake Wanahoo for their field trips in April.
- St. Wenceslaus Pre-K groups will be coming out to Lake Wanahoo for their field trips in April.
- 1st and 3rd graders from Wahoo elementary will be coming out to Lake Wanahoo for their field trips in April and May.
- Spring Conservation Sensation will be taking place May 5th.
- Aaron Ickler, our CEO student, has been in the office learning from different departments.

2. Shell Creek Watershed Scholarship Applicant

We received one scholarship applicant this year - Emma Montoya. Her information is attached. She has met the qualifications.

To qualify for the scholarship, applicants must:

- Be a graduating senior at Newman Grove High School or Schuyler Central High School
- Have completed at least one year as a member of the Shell Creek Watershed Monitoring Program
- Be enrolled in an accredited two- or four-year college or university
- Plan to pursue a major or course of study relating to science and/or natural resources

3. Envirothon

The Nebraska State Envirothon Contest will be held at Lake Wanahoo on April 28th.

The NCF-Envirothon has decided to make the contest virtual in the last week of July. We will not need any volunteers for this.

7. RURAL WATER SYSTEMS

DHHS released the 2020 water quality reports for our Colon and Bruno RWDs. Reports will be posted to our website and at local post offices.

Elliott and Benal attended the Nebraska Rural Water Conference in Kearney March 15-16. Both acquired enough hours to renew their Grade 4 water operator licenses. Major topic was the new lead and copper rules going into effect; Colon and Bruno RWDs shouldn't see any big effects, but many water utilities are going to see significant impacts due to increasing lead restrictions and reporting requirements.

A. Colon System

New water rates take effect with this month's (March) bills.

JEO submitted a cost estimate (attached) for new development in Colon; the Colon RWD will cover costs of engineering, and DHHS review.

Meters read, bills in the mail, and routine monthly sampling completed.

B. Bruno System

The new 2" service connection at the Waste Connection Landfill should be completed by 4/2. M.E. Collins has been contracted for the labor.

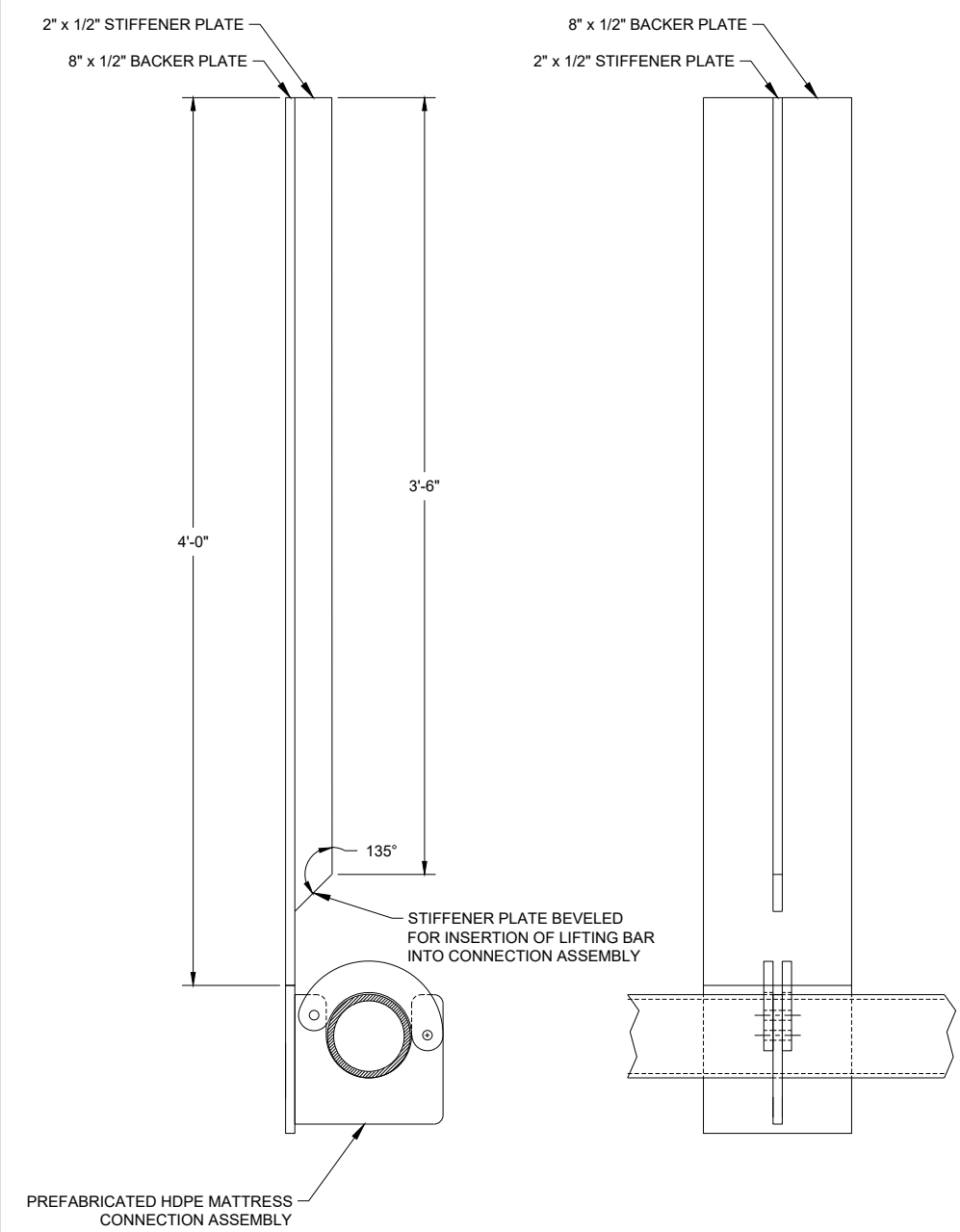
Meters read, bills in the mail, and routine monthly sampling completed.

C. Other

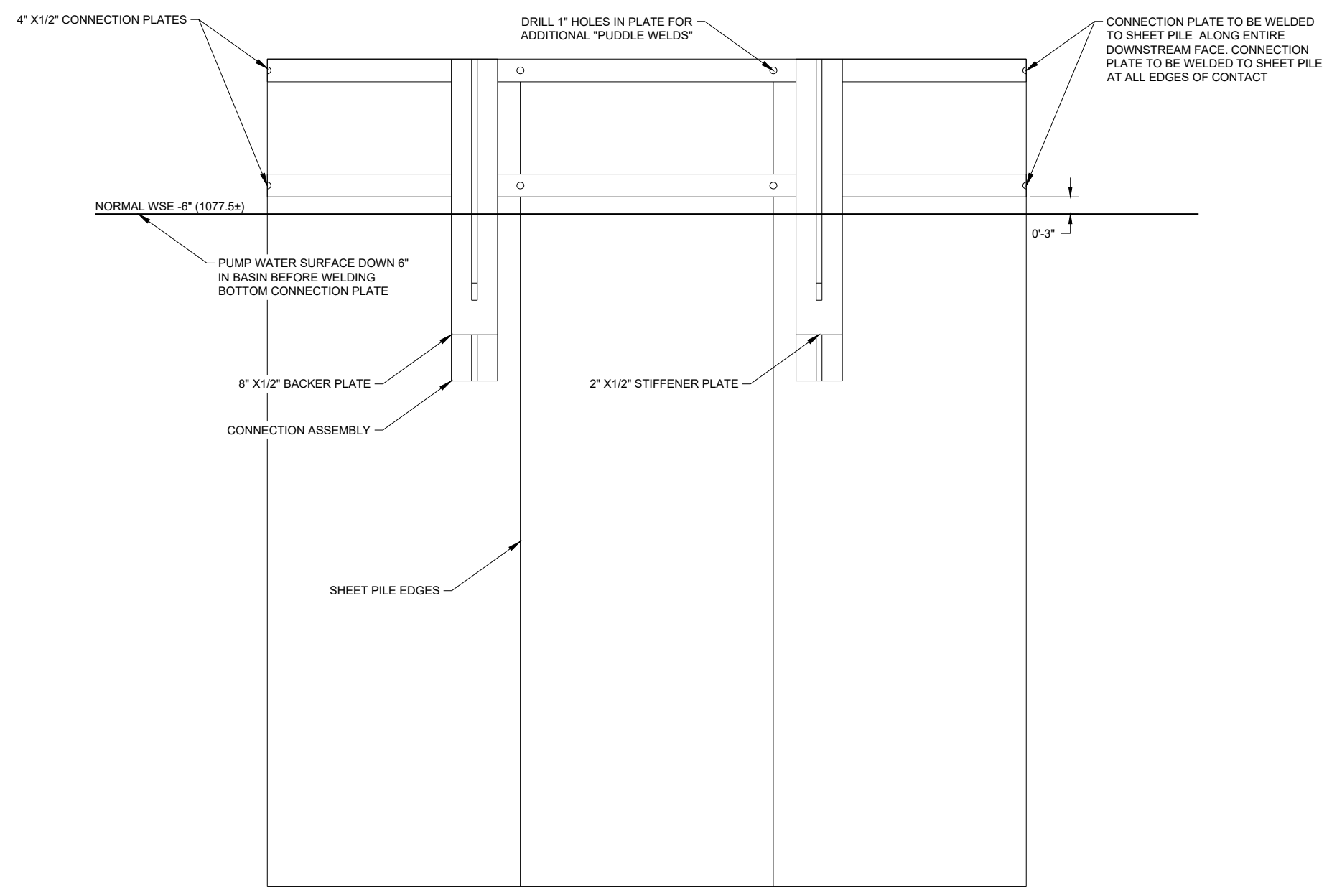
REVISIONS	
NO.	DATE

DESIGNED BY: MKS
DRAWN BY: ERS
QA / QC BY: MKS
PROJECT NO.: 022-19-01
DATE: 03.22.2021

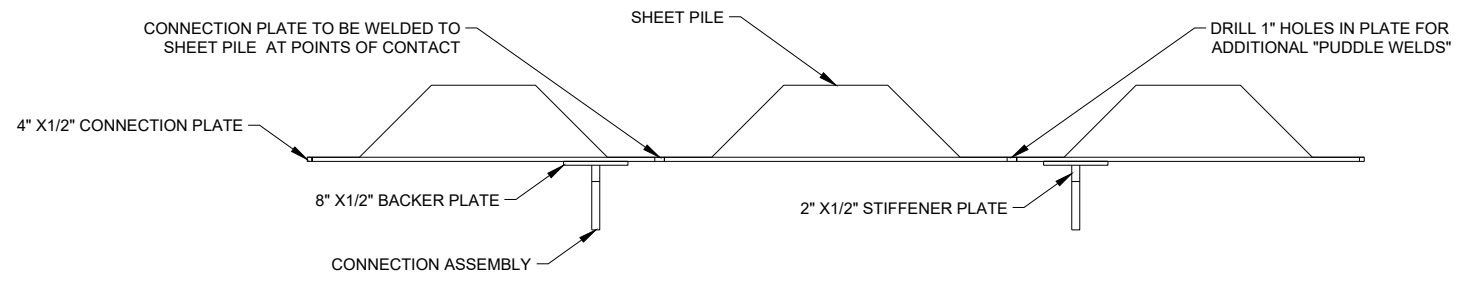
TITLE
**ALTERNATE
GABION TO
SHEET PILE
CONNECTION
DETAILS**



GABION TO SHEET PILE CONNECTION DETAIL (1)



GABION TO SHEET PILE CONNECTION (FRONT VIEW) (2)

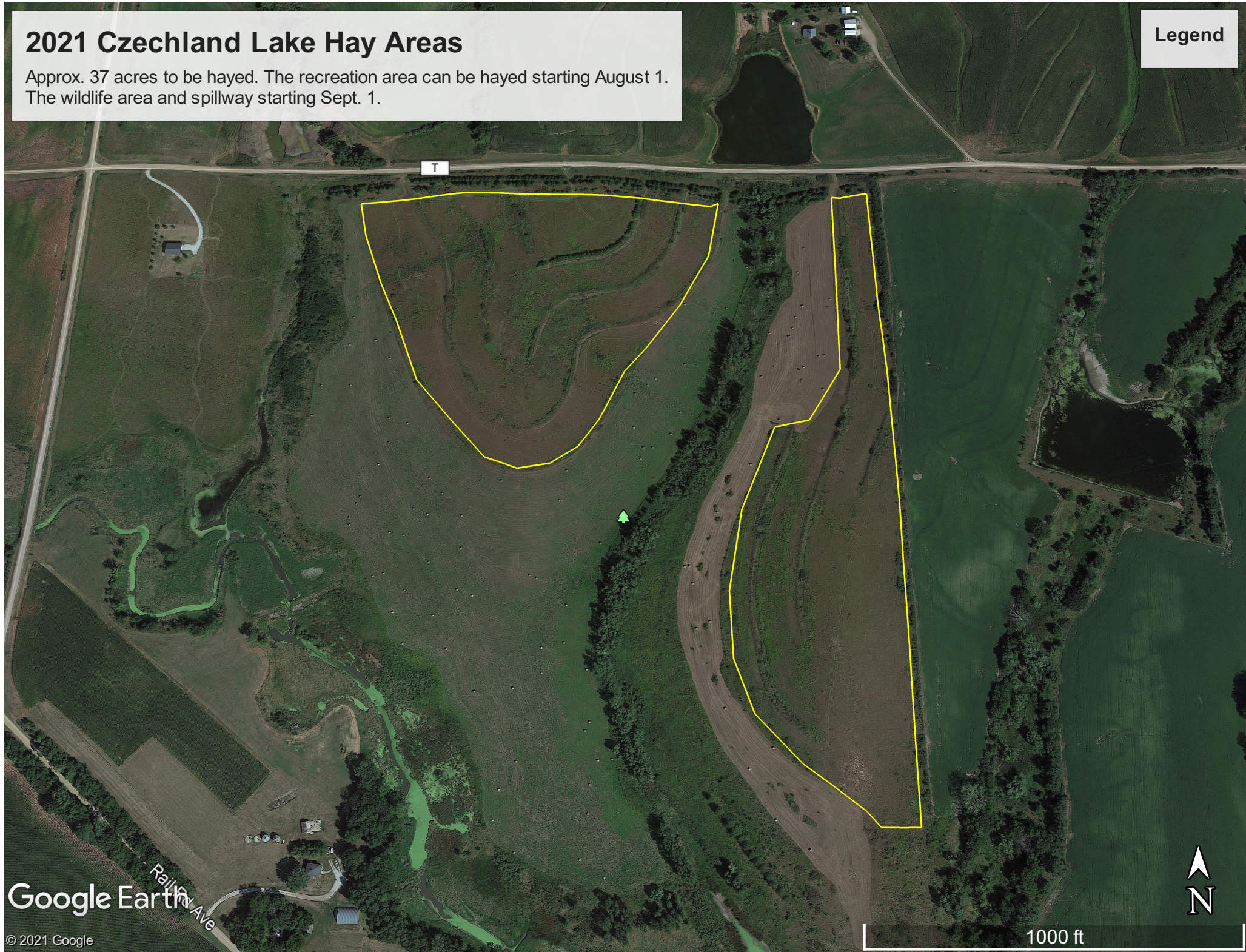


GABION TO SHEET PILE CONNECTION (PLAN VIEW) (3)

2021 Czechland Lake Hay Areas

Approx. 37 acres to be hayed. The recreation area can be hayed starting August 1.
The wildlife area and spillway starting Sept. 1.

Legend



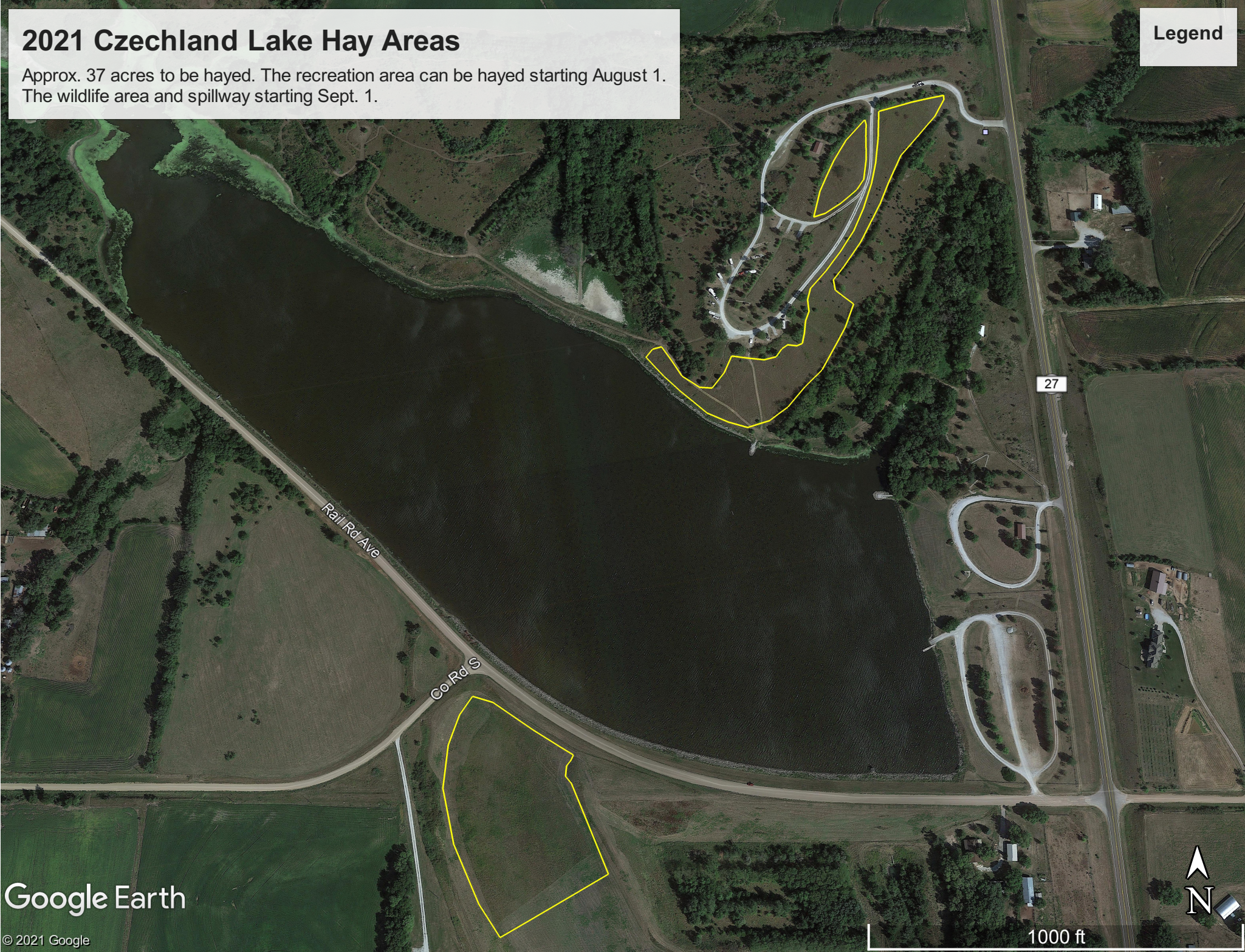
Google Earth
Rain Ave



2021 Czechland Lake Hay Areas

Approx. 37 acres to be hayed. The recreation area can be hayed starting August 1. The wildlife area and spillway starting Sept. 1.

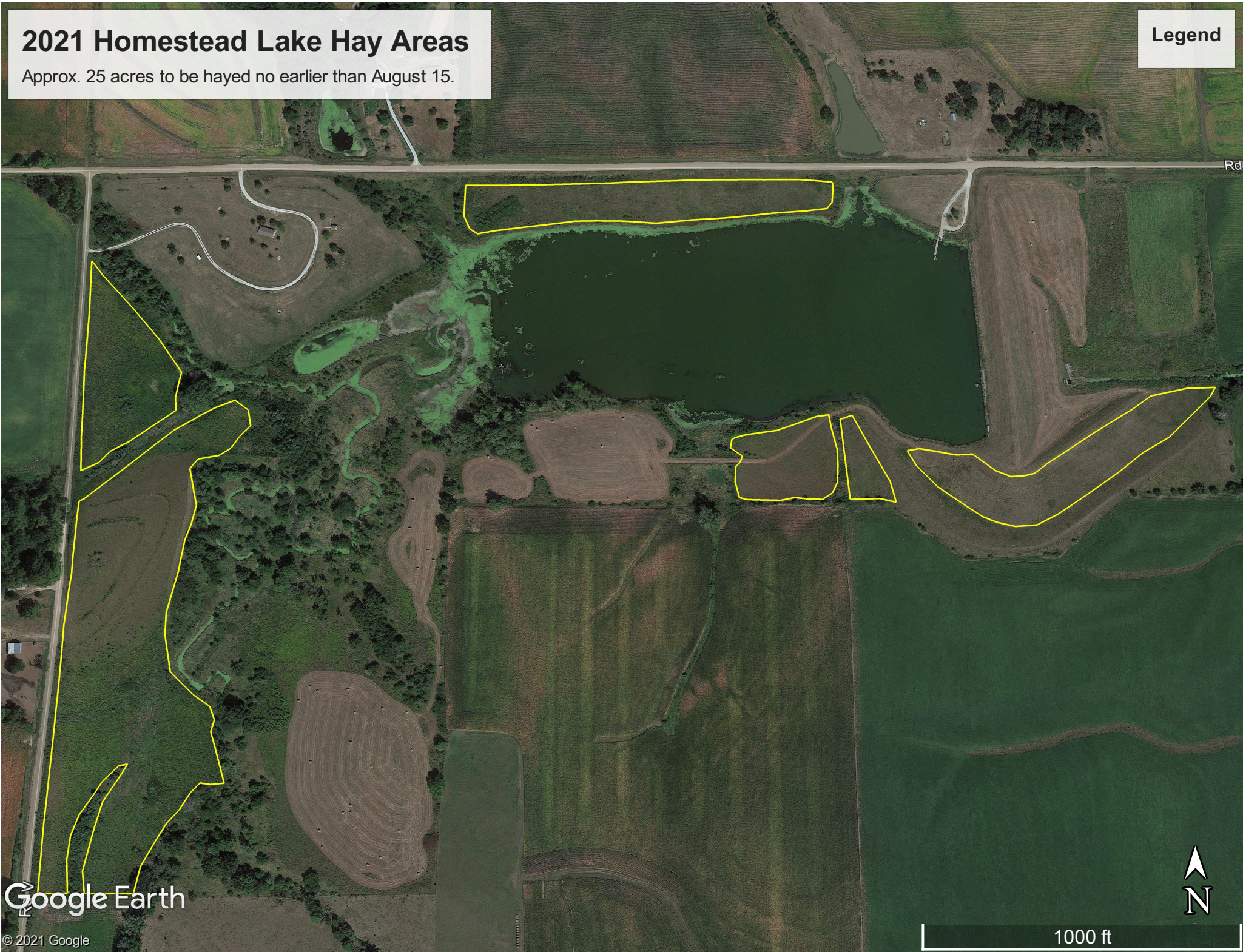
Legend



2021 Homestead Lake Hay Areas

Approx. 25 acres to be hayed no earlier than August 15.

Legend



Wanahoo Hay After Sept. 1

47 acres

Legend



Reservoir 8-D

Google Earth

© 2021 Google

Lakeview Dr
Skyline Dr

5000 ft



Wanahoo Rec Hay July 15 - August 15

West = 17.5 acres, East = 16 acres

Legend



Lake Wanahoo

17

16

Google Earth

© 2021 Google

1000 ft





March 25, 2021

U.S. Army Corps of Engineers
Wehrspann Regulatory Office
8901 South 154th Street, Suite 1
Omaha, NE 68138-3621

Project: Prague Northwest, Czechland Lake
Located in Section 26-T16N-R5E, Saunders County

RE: 404 Permit

Dear Corps Personnel:

Our firm is the Saunders County consulting engineer for the above project. On behalf of the county, we are submitting notification for a project involving the placement of rock riprap to stabilize a portion of the south bank of the Czechland Lake Reservoir. Construction is anticipated to begin in the spring of 2021.

The scope of this project is to stabilize a portion of the south bank of Czechland Lake Reservoir. Previously existing rock riprap has been eroded and needs maintenance. The roadway at the top of bank is in danger of being undermined due to erosion. Approximately 3130 Tons (2320 CuYd) of rock riprap will be placed for 1,600 feet along the south channel bank to stop the erosion caused by heavy wave action. Approximately 450 CuYd of the rock riprap will be placed below Ordinary High Water. All rock riprap will be placed on filter fabric. Any disturbed areas will be revegetated as appropriate. Construction is expected to be complete within 30 days of the start date.

Under Section 404(f)(1) of the Clean Water Act, we believe that this activity is exempt, as it is considered maintenance to a previously existing dame/levee structure. Please verify the project does not require a 404 permit.

The following items are included with this letter:

- Project location map (sheet 1)
- Aerial map
- Typical cross section of improvement (sheet 2-T)
- Plan and profile sheets (sheets 3 & 4)

If you have any questions or need additional information, please call.

Sincerely,

A handwritten signature in blue ink, appearing to read 'Arlon Strahm', with several loops and a long horizontal stroke extending to the right.

Arlon Strahm

CC: Andy Nordstrom, Saunders County Hwy Superintendent
Shannon Sjolie, Nebraska Game and Parks
Tom Mountford, Lower Platte North NRD
Nebraska Historical Society

INDEX OF SHEETS

SHEET NO.	DESCRIPTION
1	TITLE PAGE
2-T	TYPICAL CROSS SECTIONS OF IMPROVEMENT
3 TO 4	PLAN AND PROFILES
X-1 TO X-4	CROSS SECTIONS

PLANS FOR CONSTRUCTION PRAGUE NORTHWEST SAUNDERS COUNTY

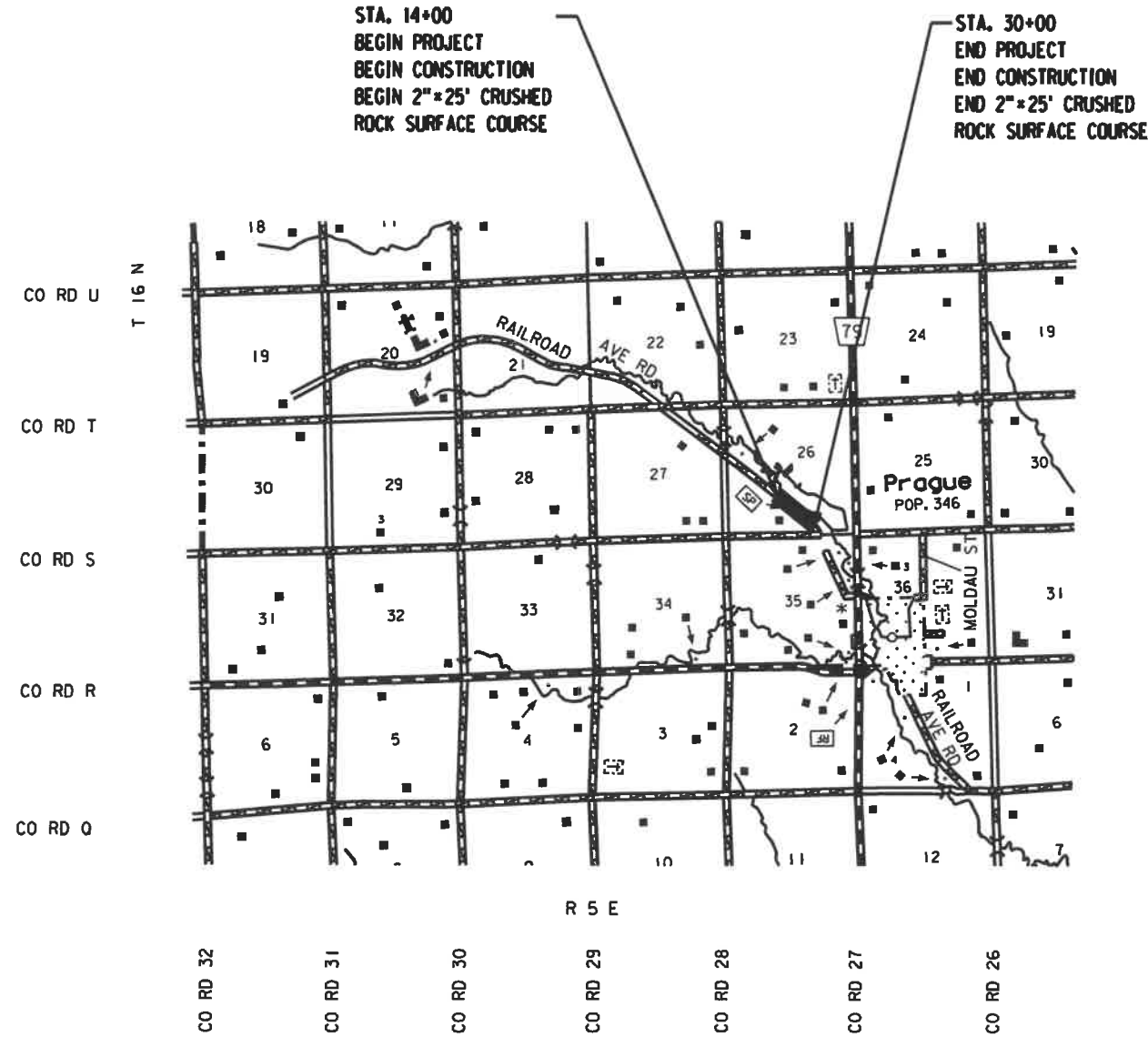


THE 2017 EDITION OF THE NEBRASKA DEPARTMENT OF TRANSPORTATION STANDARD SPECIFICATIONS FOR HIGHWAY CONSTRUCTION AND THE SPECIAL PROVISIONS APPLY TO THIS PROJECT.

STANDARD PLANS

STANDARD PLAN NO.	DESCRIPTION
501-R7	(3 SHEETS) EROSION CONTROL
502-R2	(2 SHEETS) SILT FENCE DETAILS
920-R7	(3 SHEETS) TRAFFIC CONTROL, CONSTRUCTION AND MAINTENANCE
921-R8	(2 SHEETS) TRAFFIC CONTROL, CONSTRUCTION AND MAINTENANCE
923-R2	TRAFFIC CONTROL, ROAD CLOSURE

MEETS OR EXCEEDS MINIMUM DESIGN STANDARDS OF THE BOARD OF PUBLIC ROADS CLASSIFICATIONS AND STANDARDS FOR NEW AND RECONSTRUCTED ROADS IN RURAL AREAS.



HALF SIZE PLANS

DESIGN DESIGNATION	
YEAR:	- -
ADT:	- -
ZHT:	- -
N.F.C. =	LOCAL
S.F.C. =	LOCAL

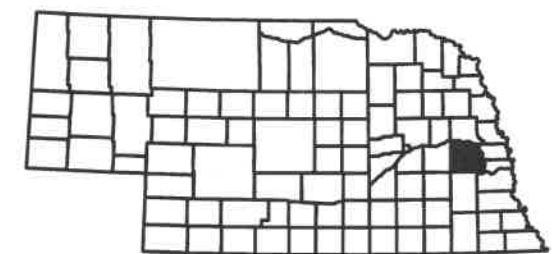
CONVENTIONAL SIGNS

FENCE R.O.W. OR WIRE	— x —
GUARDRAIL	— — — — —
TRAVELED WAY	=====
DIKE	XXXXXXXXXXXX
CULVERT	— — — — —
POWER POLE	⊕
TELEPHONE POLE	⊕
MAILBOX	⊕
RAILROAD TRACKS	— — — — —
MARSH	— — — — —
TREE - CONIFEROUS	⊙
TREE - DECIDUOUS	⊙

R.O.W. LEGEND

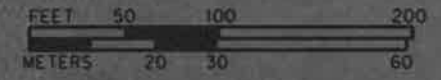
NEW CONTROLLED ACCESS	— — — — —
PREVIOUS CONTROLLED ACCESS	— — — — —
LIMITS OF CONSTRUCTION	— — — — —
PREVIOUS R.O.W.	— — — — —
NEW R.O.W.	— — — — —
EXISTING PERMANENT EASEMENT	— — — — —
TEMPORARY EASEMENT	— — — — —
EXCESS TAKING	— — — — —
PERMANENT EASEMENT	— — — — —
EXISTING RAILROAD EASEMENT	— — — — —
NEW RAILROAD PERMANENT EASEMENT	— — — — —
NEW RAILROAD TEMPORARY EASEMENT	— — — — —

REFERENCE POST NO. N/A TO REFERENCE POST NO. N/A
 EXCEPTIONS: FROM STA. N/A TO STA. N/A
 TOTAL NET LENGTH OF PROJECT: 0.303 MILES



Plans by:
**Mainelli
Wagner &
Associates, Inc.**

SAUNDERS COUNTY
CZECHLAND LAKE RECREATION AREA
PRAGUE NORTHWEST



APPROXIMATE AREA
OF PROPOSED ROCK RIPRAP

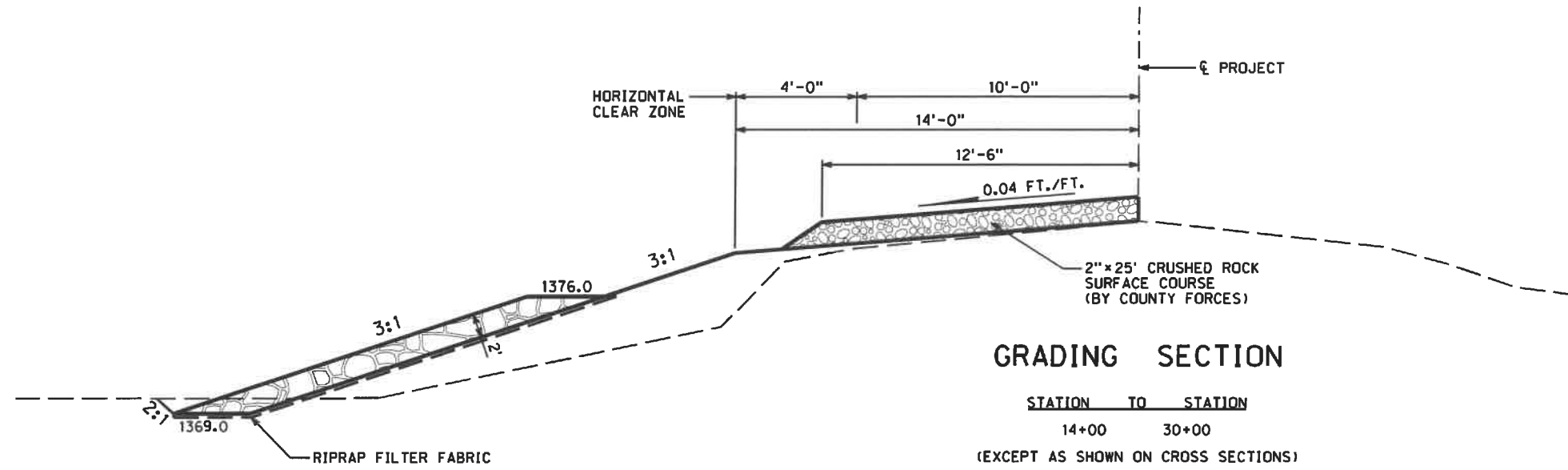
☉ PROJECT

☉ EXISTING ROADWAY

Rail Rd Ave



TYPICAL CROSS SECTION OF IMPROVEMENT



ANY UNSUITABLE MATERIAL ENCOUNTERED DURING CONSTRUCTION MUST BE EXCAVATED AND REMOVED FROM THE SITE. THE RESULTING VOID MAY BE FILLED WITH SUITABLE MATERIAL AS DIRECTED BY THE ENGINEER. ADDITIONAL EXCAVATION WILL NOT BE PAID FOR DIRECTLY BUT SHALL BE CONSIDERED SUBSIDIARY TO THE ITEM "SITE PREPARATION".

ANY EXCESS MATERIAL WILL BE DISPOSED OF BY THE COUNTY AS APPROVED BY THE ENGINEER. IF ADDITIONAL MATERIAL IS REQUIRED FOR FINAL GRADING, THE COUNTY WILL BE REQUIRED TO OBTAIN THE NECESSARY SUITABLE MATERIAL FROM A SITE APPROVED BY THE ENGINEER.

UPON COMPLETION OF THE GRADING OPERATIONS PERMANENT SEEDING OF THE DISTURBED AREAS CREATED BY THE GRADING OPERATIONS WILL BE PERFORMED BY THE COUNTY AS DIRECTED BY THE PROJECT MANAGER.

COMPACTION REQUIREMENTS	
ROADWAY EMBANKMENT	CLASS II
EMBANKMENT FOR INTERSECTING PUBLIC ROADS	CLASS II
PRIVATE DRIVES	CLASS I
(SEE SEC. 205 IN THE 2017 EDITION OF THE NEBRASKA STANDARD SPECIFICATIONS)	

THE LOCATIONS OF ALL AERIAL AND UNDERGROUND UTILITY FACILITIES MAY NOT BE INDICATED IN THESE PLANS. UNDERGROUND UTILITIES, WHETHER INDICATED OR NOT WILL BE LOCATED AND FLAGGED BY THE UTILITIES AT THE REQUEST OF THE COUNTY.

NO EXCAVATION WILL BE PERMITTED IN THE AREA OF THE UNDERGROUND UTILITY FACILITIES UNTIL ALL SUCH FACILITIES HAVE BEEN LOCATED AND IDENTIFIED TO THE SATISFACTION OF ALL PARTIES. THE EXCAVATION MUST BE ACCOMPLISHED WITH EXTREME CARE IN ORDER TO AVOID ANY POSSIBILITY OF DAMAGE TO THE UTILITY FACILITY.

THE COUNTY MAY CLOSE THE ROAD TO ALL BUT LOCAL TRAFFIC SUBJECT TO THE CONDITIONS PRESCRIBED IN THE 2017 EDITION OF THE NEBRASKA STANDARD SPECIFICATIONS.

THE COUNTY SHALL PROVIDE ROUTING THROUGH TRAFFIC AROUND THE PROJECT IF DEEMED NECESSARY.

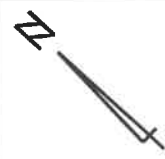
ALL SIGNING AND PAVEMENT MARKING DURING CONSTRUCTION SHALL BE DONE BY THE COUNTY IN CONFORMANCE WITH THE LATEST EDITION OF THE "MANUAL ON UNIFORM TRAFFIC CONTROL DEVICES".

EARTHWORK QUANTITIES		DRIVES AND DIKES ARE NOT INCLUDED	
STATION TO STATION	DESCRIPTION	EXCAVATION AVAILABLE (cu. yds.)	EMBANKMENT (cu. yds.)
14+00 30+00	CHANNEL	804	2,502
	TOTALS	804	2,502

SUMMARY OF QUANTITIES

ITEM	QUANTITY	UNIT
MOBILIZATION	1.000	LUMP SUM
SITE PREPARATION	1.000	LUMP SUM
EARTHWORK MEASURED IN EMBANKMENT	2,502.000	CU. YDS.
CRUSHED ROCK SURFACE COURSE	167.000	TONS
ROCK RIPRAP, TYPE "A"	3,130.000	TONS
RIPRAP FILTER FABRIC	4,285.000	SQ. YDS.
COVERCROP SEEDING	2.100	ACRES
SEEDING, TYPE "A"	2.100	ACRES

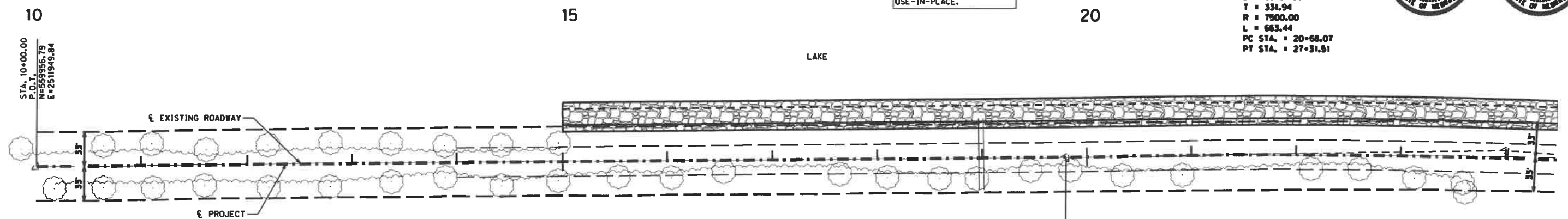
SEC. 26-T16N-R5E



PI STA. = 24+00.00
 H = 559068.78
 E = 2513032.17
 Δ = 05°04'06" RT.
 D = 05°04'06"
 T = 331.94
 R = 7500.00
 L = 663.44
 PC STA. = 20+68.07
 PT STA. = 27+31.51

NOTE: EXISTING NRD RIGHT-OF-WAY.
 NO ADDITIONAL EASEMENTS REQUIRED.

STA. 18+99
 48" x 69" CORR. METAL PIPE.
 USE -IN-PLACE.



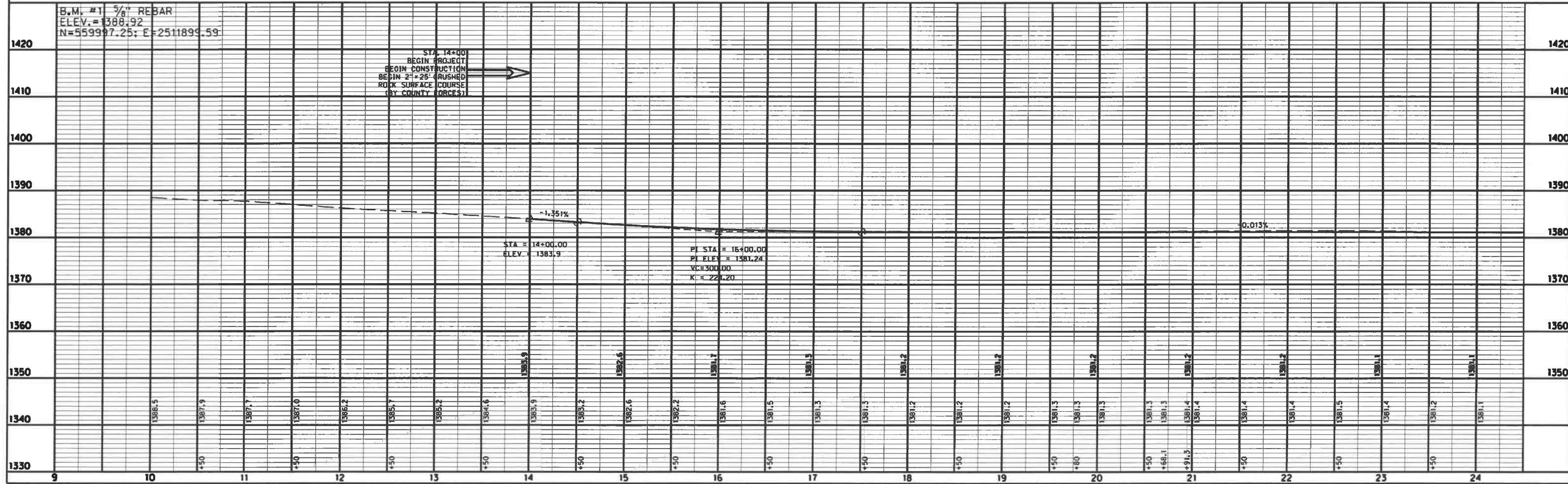
STA. 19+79.99
 P.O.T.
 N=559334.01
 E=2512706.49
 Δ=00°17'53" LT.

STA. 15+00 TO STA. 29+00
 PLACE 3,130 TONS OF ROCK RIPRAP,
 TYPE "A" ON 4,285 SQ. YDS. OF
 RIPRAP FILTER FABRIC.
 SEE SHEET 2-T FOR DETAILS.

NO TIES AVAILABLE.

SEC. 26-T16N-R5E

ALL BANDS FOR CORRUGATED METAL PIPE SHALL BE
 2'-0" WIDE (MINIMUM) UNLESS APPROVED BY THE ENGINEER.



SEC. 26-T16N-R5E

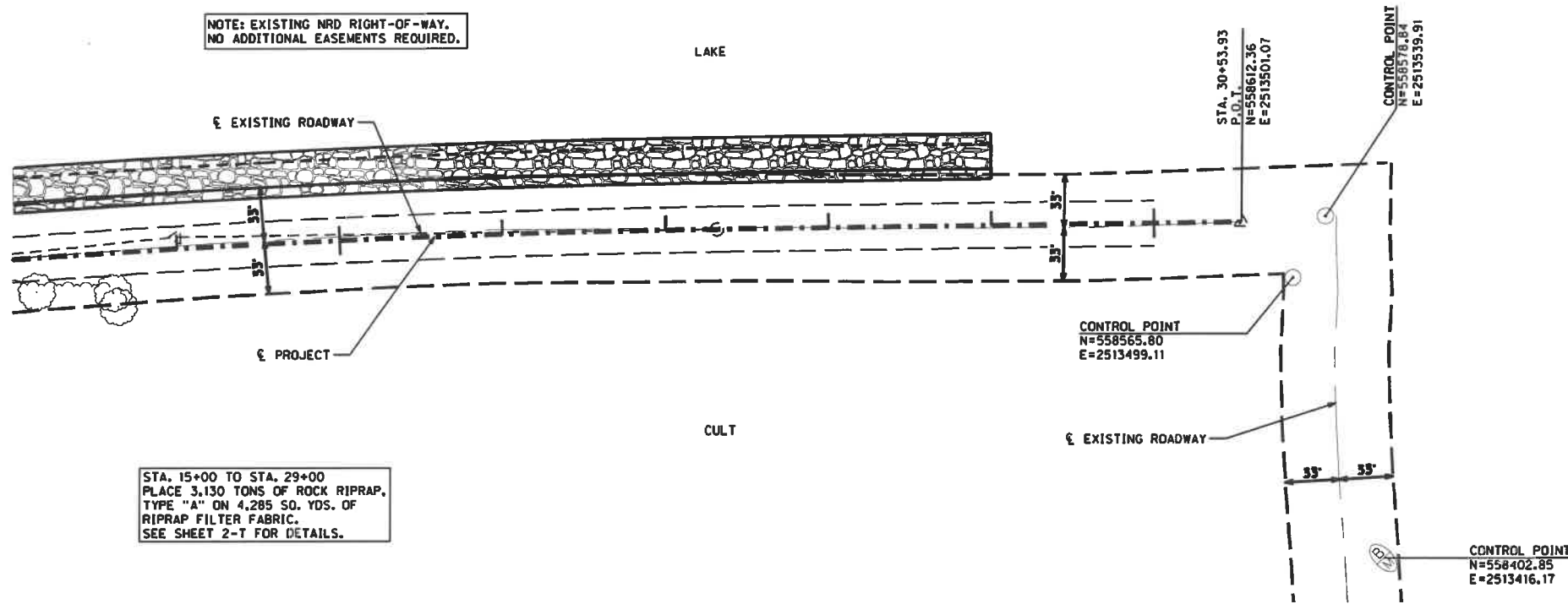


25

30



NOTE: EXISTING NRD RIGHT-OF-WAY.
NO ADDITIONAL EASEMENTS REQUIRED.

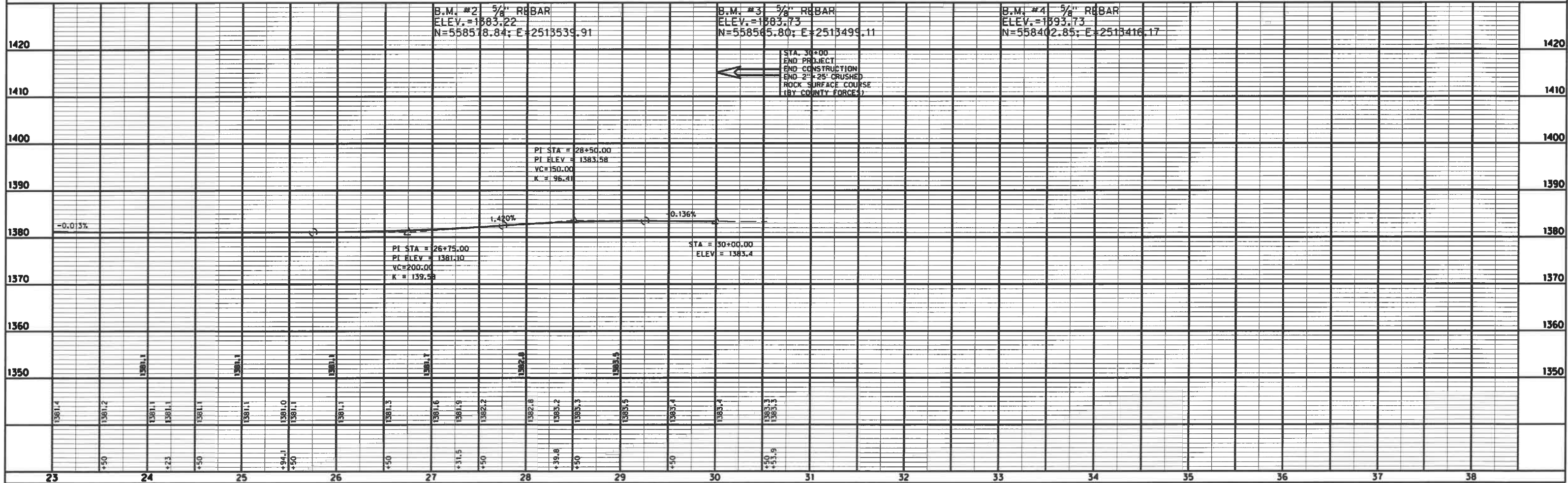


STA. 15+00 TO STA. 29+00
PLACE 3,130 TONS OF ROCK RIPRAP,
TYPE "A" ON 4,285 SQ. YDS. OF
RIPRAP FILTER FABRIC.
SEE SHEET 2-T FOR DETAILS.

SEC. 26-T16N-R5E

ALL BANDS FOR CORRUGATED METAL PIPE SHALL BE
2'-0" WIDE (MINIMUM) UNLESS APPROVED BY THE ENGINEER.

NO TIES AVAILABLE.



Engineer's Estimate

Project: Prague Northwest

County: Saunders

Project No.: Czech Lake

Description: Approximately 0.3 miles of grading.

Option 2



Engineer's Estimate

	Item Description	Plan Qty.	Units	Unit Price	Amount
1-1	Mobilization	1.000	Lump Sum	\$10,000.00	\$10,000.00
1-2	Site Preparation	1.000	Lump Sum	\$10,000.00	\$10,000.00
1-3	Traffic Control	1.000	Lump Sum	\$10,000.00	\$10,000.00
1-4	Crushed Rock Surface Course	167.000	Tons	\$40.00	\$6,680.00
1-5	Rock Riprap, Type "B"	3,130.000	Tons	\$70.00	\$219,100.00
1-7	Riprap Filter Fabric	4,285.000	Sq. Yds.	\$3.00	\$12,855.00
1-6	Earthwork Measured in Embankment	2,389.000	Cu. Yds.	\$12.00	\$28,668.00
1-7	Seeding, Type "A"	0.900	Acres	\$1,000.00	\$900.00
1-8	Covercrop Seeding	0.900	Acres	\$1,000.00	\$900.00
Total for Project:					\$299,103.00



Preserving Our Agricultural, Historical And Natural Resources.

Nebraska Land Trust Board of Directors (December 2020)

Fontenelle Forest

TBA
Executive Director
1111 N. Bellevue Blvd.
Omaha, NE 68005
(402) 731-3140
whitethall@fontenelle.org

History Nebraska

Nicholas Fogerty
Preservation Archeologist
PO Box 82554
Lincoln NE 68501-2554
402-471-2609

John Swigart

John.swigart@nebraska.gov

Lower Platte North NRD

Nancy Meyer
LPNNRD Board Member
P.O. Box 126
Wahoo, NE 68066
(402) 443-4675
nmeyer@istarter.com

Bob Heimann

Operations Manager
P.O. Box 126
Wahoo, NE 68066
(402) 443-4675
bheimann@lpnrd.org

Lower Platte South NRD

Paul Zillig
General Manager
3125 Portia St.
Lincoln, NE 68501
(402) 476-2729
pzillig@lpsnrd.org

Dan Schulz

Resources Coordinator
3125 Portia St.
Lincoln, NE 68501
(402) 476-2729
dschulz@lpsnrd.org

National Park Service*

Steve Thede
Superintendent, Niobrara National Scenic
River
P.O. Box 319
Valentine, NE 69201
(402) 376-1901
steve_thede@nps.gov

Nebraska Audubon Society

Joe Francis (Treasurer)
1530 S. 44th St.
Lincoln, NE 68506
(402) 489-7965
jjso44@gmail.com

Ross Scott

8900 Roca Road
Roca NE 68430
rocaok@gmail.com

Glenn Pollock

6736 Laurel
Omaha, NE 68104
(402) 203-5789
pollockg@cox.net

Nebraska Big Game Society

Justin Hertz
402-416-3847
justin@haydenoutdoors.com

Nebraska Cattlemen

Todd R. McWha
Waite McWha & Heng
116 N Dewey
PO Box 38
North Platte, NE 69103
(308) 532-2202
tmcwha@northplattelaw.com

Nebraska Game and Parks

Commission

Jim Douglas
Director
2200 N. 33rd St.
Lincoln, NE 68502
(402) 471-5539
jim.douglas@nebraska.gov

Tim McCoy

Deputy Director
2200 N. 33rd St.
Lincoln, NE 68502
(402) 471-5411
tim.mccoy@nebraska.gov

Nebraska Sportsmen's

Foundation

Dustin Allemann
(402) 369-1800
dustinallemann@gmail.com

Nebraska Wildlife Federation

J.J. Johnson

Nebraska State Director
4547 Calvert St., Ste 12
Lincoln, NE 68501
(402) 477-1008
nebraskawildlife@windstream.net

Dave Koukol (Secretary)

Engdahl, Koukol & Johnson, LLC
12020 Shamrock Plaza, Ste 333
Omaha, NE 68154
(402) 934-9499
dkoukol@westomahalaw.com

Niobrara Council

Jason Appelt

Bassett, Nebraska
(402) 760-1075
mjappelt@yahoo.com

Papio-Missouri River NRD

Jim Becic

Environmental Coordinator
8901 S. 154th St.
Omaha, NE 68138
(402) 444-6222
jbecic@papionrd.org

Platte River Basin Environments*

Hod Kosman

President, Platte Valley National Bank
1212 Circle Dr.
Scottsbluff, NE 69363
(308) 632-3617
hkosman@pvbank.com

Sandhills Cattle Association

Carl Simmons

PO Box 26
Valentine, NE 69201
(402) 376-131
carl@simmonsmail.com

United States Fish and Wildlife Service*

Eliza Hines

Nebraska Field Supervisor
9325 S. Alda Rd.
Wood River, NE 68883
(308) 382-6468
eliza_hines@fws.gov

Robert Harms

Ecological Services
9325 S. Alda Rd.
Wood River, NE 68883
(308) 382-6468
robert_harms@fws.gov

Kenny Dinan

9325 S. Alda Rd.
Wood River, NE 68883
(308) 382-6468
kenny_dinan@fws.gov

At-Large Members

Glenn Johnson (Chair)+1

7224 S. 94th Ct.
Lincoln, NE 68526
(402) 840-3623
glennjohnson39@gmail.com

Michael Linder (Vice Chair)

Koley Jessen P.C.
One Pacific Place
1125 S. 103rd St.
Omaha, NE 68124
(402) 390-9500

Sara Coffee Radil

9917 Devonshire Dr.
Omaha, NE 68114
(402) 203-5345
gryradil@cox.net

Neal Ratzlaff, M.D.

536 Brentwood Rd.
Omaha, NE 68114
(402) 397-0135
nratzloff@cox.net

Michael Siedschlag, P.E.

13511 Charles Cir.
Omaha, NE 68154
(402) 290-2272
msiedschlag@cox.net

Katie Zulkoski

Zulkoski Strategy Group
725 S. 14th St.
Lincoln, NE 68508
katie@zulkoskistrategy.com

General Counsel

Nancy Roberts, (Legal Counsel)

McGill Gotsdiner Law Firm
11404 W. Dodge Rd., Suite 500
Omaha, NE 68154
(402) 492-9200 Ext. 106
NancyRoberts@mgwl.com

NLT Staff*

Dave Sands, Executive Director

9200 Andermatt Dr., Ste 7
Lincoln, NE 68526
(402) 438-5263
Cell – (402) 430-3931
dsands@nelandtrust.org

Jacob Alishouse, Stewardship Director

9200 Andermatt Dr., Ste 7
Lincoln, NE 68526
(402) 438-5263
Cell- (402) 419-3201
jalishouse@nelandtrust.org

Accepting Tree Orders!

LPNNRD is accepting tree and shrub orders! View available species online and an order form at www.lpnnrd.org or call 402-443-4675



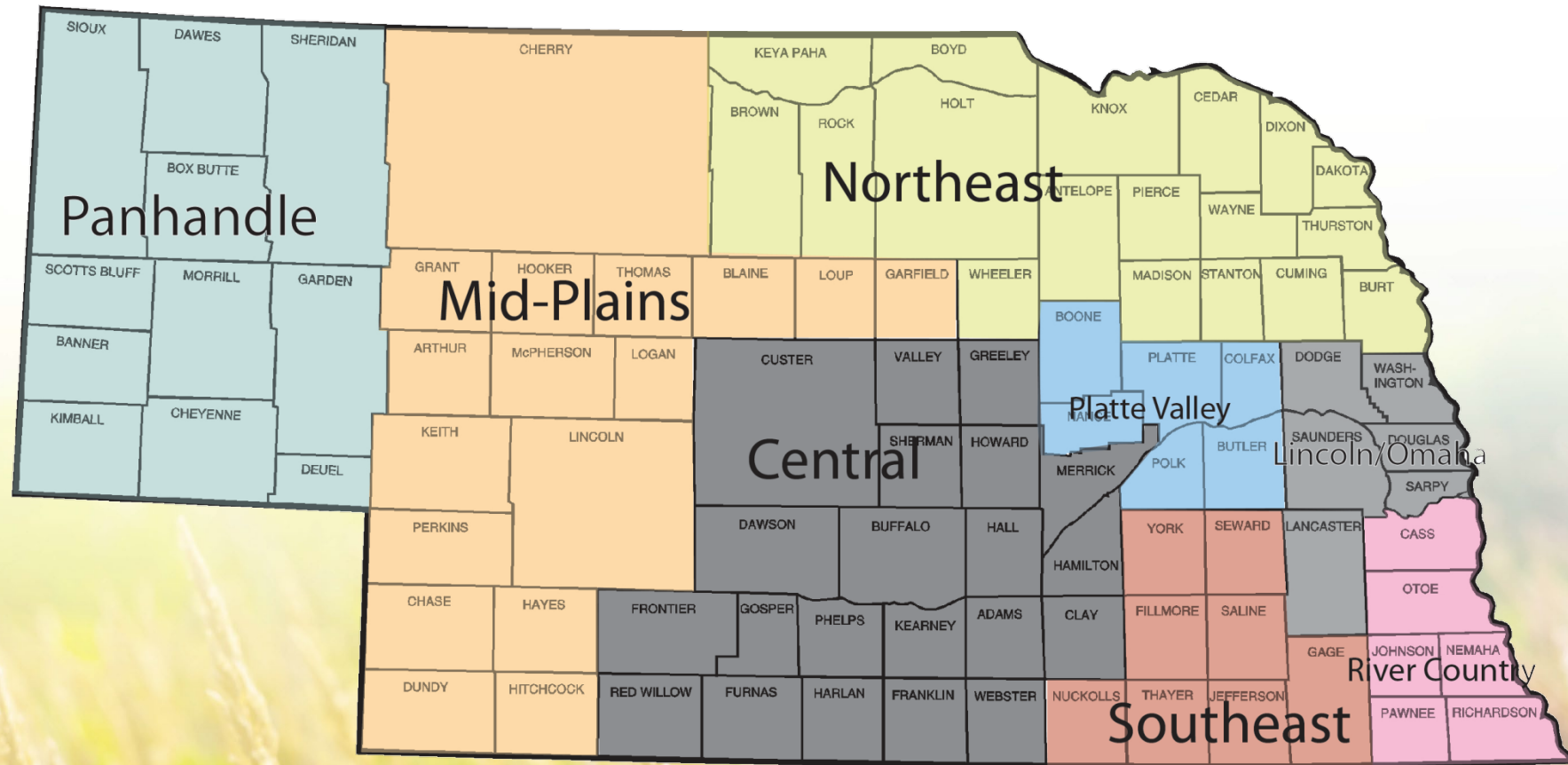
LOWER PLATTE NORTH
Natural Resources District



New & Expanded Online Coverage

- More news
- More content
- More weather
- **ALL DAY**

In the Region that matters MOST to you



News Channel Nebraska 2020 Advertising Rates

News:

- 1 (:30) during your exclusive hour
- 1 (:05) name/logo during your exclusive hour
- *Hours are available first come first served**
- \$475 per month (30 commercials per month)

Ag:

- 1 (:30) per day (6am-midnight rotation)
- 1 (:05) name/logo during the day (6am-midnight rotation)
- \$400 per month (30 commercials per month)

Sports: (sponsor, not in live sports)

- 1 (:30) per day (6am-midnight rotation)
- 1 (:05) name/logo during the day (6am-midnight rotation)
- \$360 per month

Weather:

- 1 name/logo per day = \$295 per month
- 1 name/logo per day + 30 (:30) ads per month = \$375 per month
- 1 name/logo per day + 40 (:30) ads per month = \$495 per month
- 2 name/logo per day + 100 (:30) ads per month = \$850 per month
- 3 name/logo per day + 130 (:30) ads per month = \$1195 per month

General Rates (:30 or :15) Commercials only rate

- 6am-10am = \$17
- 10am-3pm = \$15
- 3pm-6pm = \$18
- 6pm-12am = \$19
- 6am-12am = \$13

Production Rates:

- \$125 for a :15 or :30 second commercial (client has B-Roll) (\$200 is no B-roll available)
- \$50 for editing existing commercials
- \$50 for drone shots
- Multiple Locations: \$50 per location outside 15 mile radius
- 2 hour production shoot – subject to additional charges if longer



**SHELL CREEK WATERSHED MONITORING PROGRAM
SCHOLARSHIP APPLICATION**



1. **ACADEMIC YEAR** – Indicate the academic year for which you are applying for scholarship assistance: 2021

2. **MAJOR/COURSE OF STUDY** – Indicate the major or course of study you will be pursuing:

Pre-Professional nursing

3. **COLLEGE** – Indicate the accredited two-year or four-year college or university you will be attending:

North east Community College

4. PERSONAL DATA

Applicant Name (First MI Last): <u>Emma L. Montoya</u>			
Primary Residence:			
Address <u>106 South 10th Street</u>			
City <u>Newman Grove</u>	State <u>NE</u>	ZIP <u>68758</u>	
Primary Phone <u>402-649-4524</u>	Email <u>emmamontoya15@gmail.com</u>		
Parent/Guardian Name(s) <u>Amy and Jose Montoya</u>			

5. **PERSONAL ESSAY** – On one separate sheet of paper provide an essay stating your chosen major/course of study, how it relates to science and/or natural resources, and how you believe your experience with the Shell Creek Watershed Monitoring Program will help you achieve your academic goals. Please do not exceed one page.

6. **HIGH SCHOOL GRADES** - Provide a copy of your most recent high school grades/transcript, including GPA.

7. **SAT/ACT SCORES** - If available, provide a copy of your SAT or ACT results.

8. **PROOF OF ENROLLMENT** - Provide proof of enrollment (ie. letter of acceptance, tuition statement, or class schedule) from the college/university you will be attending.

Continued on next page

PLEASE SUBMIT ONLY ONE APPLICATION. Completion of items 1 through 8 above is mandatory. If the information requested does not apply, enter N/A. Applications should be sent to: **Lower Platte North NRD, Attn: Sydney Abbott, PO Box 126, Wahoo, NE 68066**, or emailed to **sabbott@lpnnrd.org**

ELIGIBILITY – To be eligible, an applicant must satisfy the following requirements:

Be a graduating senior at Newman Grove High School or Schuyler Central High School

Have completed at least one year as a member of the Shell Creek Watershed Monitoring Program

Be enrolled in an accredited two- or four-year college or university

Plan to pursue a major or course of study relating to science and/or natural resources

All applications and supporting materials must be received by the LPNNRD Office no later than March 15th for consideration for the fall term.

Lower Platte North NRD staff and representatives from Newman Grove Public Schools and Schuyler Public Schools will evaluate applications. The Lower Platte North NRD Board of Directors will make the final award decision.

I certify that, to the best of my knowledge, all information given on this application is true, correct, original and complete, and that I understand and will abide by the scholarship requirements if I am chosen as the recipient.

Applicant's Signature Emmanuel Montoya **Date:** 2-5-21

Emma Montoya

106 South 10th Street
Newman Grove, NE 68758
(402) 649-4524
emmamontoya15@gmail.com

5th February 2021

Hi, I am Emma Montoya and I am a student at Newman Grove Public Schools. I have been my entire life. After graduating from Newman Grove High School I plan on attending Northeast Community College. My major will be Pre-professional Nursing. I have my schedule and plan already made for the next 4 years. I plan on getting my BSN. A nursing degree is a science based degree. I have always loved science, but my experience with the Shell Creek Watershed Monitoring Program has changed my perspective of science. It has shown me a respect for science. In science classes I've always learned concepts, and ways to be able to relate them to things in the real world. With me participating in this program I have actually gone out and made an actual connection. This will help me with my career, because I know now how important it is that we are aware of our community, and what we do that affects it. I already work as a CNA and am able to not only share the knowledge I have about our community with the people I work with and take care of, but I am able to know how to make deeper connections with them too. When I first started helping with the watershed program I didn't know much about it, but now that I have put in all of the work I have I have such a great appreciation for how science affects everything around me.

Sincerely,

Emma Montoya

ENGINEER'S CONCEPTUAL OPINION OF PROBABLE COST**WALNUT AND 1st STREET WATER MAIN****COLON, NEBRASKA****JEO Project No. 090051**

Date Prepared:

March 1, 2021

**ESTIMATE OF QUANTITIES**

Item #	Description	Unit	Quantity	Unit Price	Total	
GROUP A - FURNAS STREET WATER 21ST TO 24TH						
1.	Mobilization	LS	1	\$15,000.00	\$5,000	
2.	Bonding and Insurance	LS	1	\$7,500.00	\$5,000	
3.	6" PVC Water Main, DR 18	LF	900	\$35.00	\$31,500	
4.	Fittings	LS	1	\$6,500.00	\$6,500	
5.	6" Gate Valve and Box, MJ	EA	1	\$1,200.00	\$1,200	
6.	Connect to Existing Water Main	EA	2	\$1,250.00	\$2,500	
				Construction Subtotal	Group A	\$51,700
				Contingency	10%	\$5,170
				Total Opinion of Construction Cost - Group A		\$56,870
PROFESSIONAL SERVICES						
1.	Design Services (Engineering, Survey, Architecture)				\$6,000	
2.	Overhead (Legal, Fiscal, Etc.) 10%				\$600	
				Subtotal Professional Services	\$6,600	
				Total Opinion of Project Cost		\$63,470

JEO Consulting Group Inc.'s (JEO) Opinions of Probable Cost provided for herein are to be made on the basis of JEO's experience and qualifications and represent JEO's best judgment. However, since JEO has no control over the cost of labor, materials, equipment, or services furnished by others, or over the Contractor's methods of determining prices, or over competitive bidding or market conditions, JEO cannot and does not guarantee that proposals, bids, or actual construction cost will not vary from Opinions of Probable Cost prepared by JEO.

Prepared By: D. Henke

Checked By: