

Projects Committee Meeting
 Thursday, November 3, 2016 8:00 AM
 Lower Platte North NRD Office
 P.O. Box 126
 Wahoo, NE 68066

1. UNFINISHED BUSINESS
 - None
2. SWCP
 - 2.A. SWCP Application Approvals
 - Darrell Umscheid Diversion \$ 507.45
 - 2.B. SWCP Payments
 - None
 - 2.C. SWCP Cancellations
 - None
 - 2.D. Nebraska Buffer Strip Payments

Nebraska Buffer Strip Program 2016 Payments

Charles Barjenbruch	9.5 acres	\$ 229.24
James Barjenbruch	13 acres	\$ 341.77
Lavaine Gaskill	5.5 acres	\$ 155.38
Hill Valley Farms	16.5 acres	\$ 3,712.50
Rodney Julsen	23.1 acres	\$ 5,197.50
Ed Luetkenhaus	4 acres	\$ 900.00
Francis Shanle	9.5 acres	\$ 247.00
Ronald Anderson	12.9 acres	\$ 759.93
Tom Sprunk	15.4 acres	<u>\$ 3,465.00</u>

TOTAL 2016 PAYMENTS: \$ 15,008.32

2.E. Wahoo Creek Cost Share Payments

Payments:

Mary Jo Spicka	Terraces/tile	\$ 7,381.32
Robert Hedges	Lands for Cons.	<u>\$ 6,992.00</u>
TOTAL:		\$ 14,373.32

3. WATERSHEDS

3.A. Shell Creek - Watershed Plan

NDEQ is making final inputs as requested by EPA. We are hopeful to get final approval in a week or two. EPA was having a hang up on the rotation of priority watersheds. They are fine with focusing Section 319 funds on the stream and tributary corridor, but want other funding sources to support the upland work in the priority sub-watersheds.

It appears that EPA is accepting the following compromise:

1. Increase the width of the stream corridor from 1,000 feet to 1,500 feet (total 3,000 feet) and limit expenditure of Section 319 funds to Best Management Practices installed in the corridor. This will shift Section 319 funds more toward structural practices [oxbow connections, stream stabilization and retention ponds (e.g., road structures)] and exclusion fencing and pasture management. It will also accommodate fields with 1/4 miles rows so we don't have to split eligibility within large fields.
2. Retain the priority sub-watersheds and rotation schedule, but limit practice funding to sources other than Section 319 funds.
3. Retain match eligibility for non-federal funds expended for practices installed in the sub-watersheds.
4. Retain wellhead protection areas as special priority areas for Section 319 eligibility.
5. Retain eligibility for upgrade of on-site waste water treatment systems as a watershed-wide practice.
6. Retain outreach as a watershed wide practice/activity.

3.B. Wahoo Creek Watershed

3.B.1. Wahoo Creek Watershed Water Quality Plan Phase I

Attached is the 9/30/2016, \$1,250 invoice that was paid to JEO for contract work in the Wahoo Creek Watershed. To date, \$95,900 of their \$120,000 total contract has been paid. Since much of the remaining contract work will not be completed under Phase I, we have shifted the focus to payments on land treatment contracts to landowner. Phase I will be finished in March, 2017.

4. LOWER PLATTE RIVER CORRIDOR ALLIANCE

4.A. LPRCA Monthly Report

On October 18th, Miyoshi and Mountford met with the managers and assistant managers at LPSNRD and PMRNRD to discuss the future of the LPRCA. With Meghan Sittler's resignation, it was decided to wait until all three NRD's have an opportunity to regroup and discuss how or what partners want to continue in the future before a new coordinator is hired. As you know, LPNNRD is presently a non-dues paying member but is participating with three previous commitments. The next scheduled LPRCA quarterly meeting is set for 10:00 a.m. at the Papio Missouri River NRD.

Last week we were informed that Corps Headquarters is moving forward to include the Lower Platte River Watershed Restoration in the President's Budget. This is the authority that the Alliance has been working to get approved for 10 years which will provide funding opportunities for conservation work in the Lower Platte Watershed (see attachment).

SEC. 5104. LOWER PLATTE RIVER WATERSHED RESTORATION,
NEBRASKA.

(a) IN GENERAL.—The Secretary may cooperate with and provide assistance to the Lower Platte River natural resources districts in the State of Nebraska to serve as

non-Federal interests with respect to— (1) conducting comprehensive watershed planning in the natural resource districts; (2) assessing water resources in the natural resource districts; and (3) providing project feasibility planning, design, and construction assistance for water resource and watershed management in the natural resource districts, including projects for environmental restoration and flood damage reduction.

(b) FUNDING.— (1) FEDERAL SHARE.—The Federal share of the cost of carrying out an activity described in subsection (a)(1) shall be 75 percent. (2) NON-FEDERAL SHARE.—The non-Federal share of the cost of carrying out an activity described in subsection (a) may be provided in cash or in kind.

(c) AUTHORIZATION OF APPROPRIATIONS.—There is authorized to be appropriated to the Secretary to carry out this section \$12,000,000.

5. OTHER

5.A. Army COE 205 Projects

5.A.1. Fremont 205

The Corps of Engineers has organized a Non-Federal partners meeting for Thursday, November 10 at 9:00 a.m. in the Fremont City Counsel Chambers. The COE will update us on the study and tell us how we will proceed with a public meeting most likely after the first of the year.

5.A.2. Schuyler 205

On October 27th, Mountford and Heimann participated in a conference call with the Army COE (attachment) to discuss remaining tasks as the Shell Creek Levee Project is wrapping up. Final tasks include sediment removal, grading, shaping, and seeding of the south drainage ditch of Highway 30 eastward from Drainage and completion of the Operation and Maintenance Manual.

7. **Ditch Clean out plans and specs** - JEO has been working diligently in the preparation of plans and specs for the ditch clean out. Coordination has occurred with the COE. Plans and specs were sent for review to the COE and NDOR on Oct 26th. Award of a contract is targeted for November 11. Weather permitting, the work will be completed this fall. The COE will provide comment on the plans and specs. One comment to be aware of is that a note needs to be added to the plans not to disturb existing drainage structures to address any concern related to the drainage structure No. 1 being impacted.

8. **O & M Manual Status** -The Draft Final O&M Manual has been sent to the Schuyler, LPNDRD, NDOR and Union Pacific on CD's. Comments have been requested to be submitted by November 18th to the COE. All are encouraged to closely review the drawing for accuracy. The O&M Manual goes into effect when the project is turned over. It will be approved before the project is turned over. Once turned over the sponsor would coordinate with the Readiness Branch who will oversee the project. Inspections will be completed by the Missouri River Project Office.

5.B. Shell Creek Landowner Levee Project Update

No new information was presented.

5.C. Review of Projects Financial Statement

5.D. Platte Center Bank Stabilization Project Payment Request

Platte Center has completed the latest phase of their Elm Creek Bank Stabilization Project and is requesting \$11,357 (50% assistance) reimbursement on their \$22,714 total invoice as attached. The Board previously approved 50% assistance up to \$11,715 toward this project phase.

6. ADJOURNMENT

With no further business, the Projects Committee adjourned (in record time) at 8:28 a.m.

SWCP Monthly Report

October 31, 2016

SWCP LOCAL	\$20,000.00
SWCP TREE ALLOCATION	\$3,000.00
STATE ALLOCATION	\$114,161.19
AMOUNT SPENT	\$42,104.32
CASH BALANCE	\$95,056.87
ALLOCATION %	153%

SWCP #	STATUS	NAME	AMOUNT	PROJECT	SHELL CREEK FUND
--------	--------	------	--------	---------	------------------

APPROVED SMALL DAM PROJECTS:

15-S-12	Approved	Mike Chvatal	\$	16,742.31	Small Dam
---------	----------	--------------	----	-----------	-----------

APPROVED SUMMER PROJECTS:

15-C-15	Approved	Randy Brabec	\$	1,200.18	Diversion	
15-B-17	Approved	Randy Fendrich	\$	12,500.00	W/S Basins w/Tile	
15-B-20	Approved	Tom Smaus	\$	7,753.52	Terraces/Tile	
15-S-23	Approved	Glen Treptow	\$	12,500.00	Terraces/Tile	Wahoo Creek
15-S-24	Approved	Doris Treptow Rev. Trust	\$	6,812.72	Terraces/Tile	Wahoo Creek

TOTAL SUMMER APPROVALS \$ 57,508.73

APPROVED PROJECTS:

16-S-1	Approved	Edward Kratky	\$	12,500.00	
16-S-2	Approved	Bob, Rich, Tim Bartek	\$	12,379.13	
16-D-3	Approved	Vering Feeyard, LLC	\$	12,500.00	
16-S-4	Approved	Paseka Family Rev. Tr.	\$	1,748.25	
16-B-5	Approved	Kirk Marushad	\$	11,576.49	
16-B-6	Approved	Bonita Jisa	\$	12,500.00	
16-B-7	Approved	Laverne Kucera	\$	12,500.00	
16-B-8	Approved	Richard Voboril	\$	12,500.00	

TOTAL FALL APPROVALS \$ 88,203.87

APPROVED SHELL CREEK PROJECTS:

TOTAL

TOTAL \$0.00

TOTAL AMOUNT ALLOCATED \$ 145,712.60

PAID PROJECTS

SWCP #	STATUS	NAME	AMOUNT	PROJECT
15-S-14	Approved	Mike Chvatal	\$ 12,187.14	Terraces/Basins/Tile
15-S-16	Approved	David Hartman	\$ 10,962.26	Terraces/Tile/Basins
15-S-21	Approved	James Fujan Trust	\$ 6,454.92	Terraces/Tile
15-S-22	Approved	David Sousek	\$ 12,500.00	Terraces/Tile

LOCAL FUNDS

PAID PROJECTS COTTONWOOD CREEK WATERSHED

SWCP PAID: \$ 42,104.32 \$0.00

PAID PROJECTS COORDINATING - SAND & DUCK CREEK

Total SWCP PAID: \$ 42,104.32



3137

Invoice



September 30, 2016
Project No: R100267.01
Invoice No: 91831
Invoice Amount: 1,250.00

Lower Platte North NRD
511 Commercial Park Road
PO Box 126
Wahoo, NE 68066

Project Manager John Petersen

Project R100267.01 Lower Platte North NRD: Wahoo Watershed Water Quality Plan Phase I Implementation

Professional Services through September 23, 2016

	Contract Amount	Percent Complete	Billed-to-Date	Previous Billing	Current Billing
Lump Sum Phase(s)					
Task 1 - Land Use and Condition Assessment	\$15,000.00	100 %	\$15,000.00	\$15,000.00	0.00
Task 2 - Stream Stability and Ecological Assessment	\$61,500.00	95 %	\$58,425.00	\$58,425.00	0.00
Task 3 - Stream Monitoring Reference Sites	\$18,500.00	10 %	\$1,850.00	\$1,850.00	0.00
Meetings and Public Involvement	\$12,500.00	85 %	\$10,625.00	\$9,375.00	\$1,250.00
Project Management	\$12,500.00	80 %	\$10,000.00	\$10,000.00	0.00
Total	\$120,000.00		\$95,900.00	\$94,650.00	\$1,250.00

Total Amount Due Upon Receipt \$1,250.00

cc: Tom Mountford, tmountford@lpnrd.com

Date rec'd 10/31/16
Approved by RBH JM
Date approved 10-10-16 10/14/16
Expense acct 4050802
Funding source _____
% (amount) _____
Income acct _____



Monthly Progress Report

Lower Platte North NRD Wahoo Creek Watershed WQMP Implementation Phase 1

JEO Project #: 100267.01
Through: September 23, 2016

-
1. **Work Completed this Period (August 19 to September 23, 2016)**
 - Coordination with NRD and County on next steps for project
 - Met with County committee and full county board to discuss road dam projects and future phases
 2. **Work to be Completed Next Period**
 - TBD, continued meetings with NRD and County to push project forward and gain project partners
 3. **Project schedule**
 - TBD, anticipated that design phase will begin in January 2017
 4. **Information Needed from NRD**
 - None at this time
 5. **Next Meeting Date and Time**
 - None planned at this time

Please contact Adam Rupe at 402.435.3080 or at arupe@jeo.com or John G. Petersen at 402.392.9923 or jpetersen@jeo.com for any questions or concerns regarding this progress report.



**US Army Corps
of Engineers®**

Lower Platte Watershed, Nebraska (NWO)

Aquatic Ecosystem Restoration

Authorization: Section 5104, Water Resources Development Act of 2007 (P.L. 110-114).

SEC. 5104. LOWER PLATTE RIVER WATERSHED RESTORATION, NEBRASKA.

(a) **IN GENERAL.**—The Secretary may cooperate with and provide assistance to the Lower Platte River natural resources districts in the State of Nebraska to serve as non-Federal interests with respect to—

(1) conducting comprehensive watershed planning in the natural resource districts;

(2) assessing water resources in the natural resource districts; and

(3) providing project feasibility planning, design, and construction assistance for water resource and watershed management in the natural resource districts, including projects for environmental restoration and flood damage reduction.

(b) **FUNDING.**—

(1) **FEDERAL SHARE.**—The Federal share of the cost of carrying out an activity described in subsection (a)(1) shall be 75 percent.

(2) **NON-FEDERAL SHARE.**—The non-Federal share of the cost of carrying out an activity described in subsection (a) may be provided in cash or in kind.

(c) **AUTHORIZATION OF APPROPRIATIONS.**—There is authorized to be appropriated to the Secretary to carry out this section \$12,000,000.

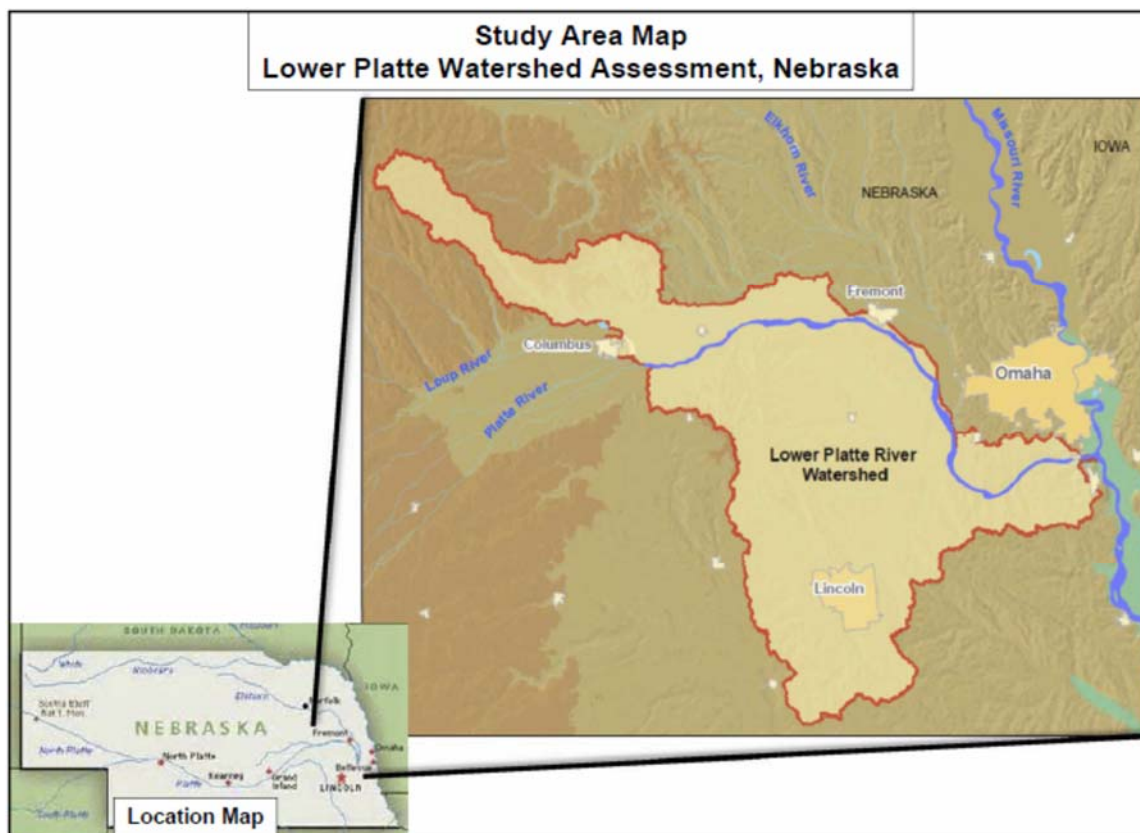
Sponsors and Letter of Intent (LOI):

Most recent Letter of Intent was received from the Lower Platte South Natural Resources District dated April 13, 2016.

Project Location Description (see Map):

The Lower Platte Study area includes the lower 110 miles of the Platte River from Columbus, Nebraska to the mouth. The study area includes 24 communities and 8 counties including over 50-percent of the population in the State of Nebraska. The Lower Platte River is a wide, braided, sand-bed stream and serves as the defining river system of the Central Plains. The Upper end of the Lower Platte Basin includes the Loup River watershed which drains much of the Nebraska Sand Hills. The Salt Creek watershed along the southern edge of the Lower Platte Basin is the only saline wetlands complex in the State of Nebraska and the only known habitat worldwide for the endangered Salt Creek tiger beetle (over 90% has been degraded or lost due to development). Underlying the Central and Lower Platte is the Ogallala Aquifer which is the largest groundwater aquifer in North America. The in-stream, floodplain, and wetland/riparian habitat along the Lower Platte River forms a critical connection between habitats along the Missouri River and those along upper reaches of the Platte River as well as its tributaries.

Lower Platte is classified as a mid-order, warm water river. Historically the river itself has been frequented by endangered pallid sturgeon and many other at risk species such as blue sucker, lake sturgeon, plains topminnow, sturgeon chub, and pimpleback mussels. Sandbars within the river channel are used as nesting sites for endangered interior least terns and threatened piping plovers. Other aquatic and terrestrial species which are dependent on wetlands and riparian areas along the river corridor are also at risk including: wood thrush, Blandings turtles, North American river otters, massasauga, and Bell's vireo.



Problems and Opportunities:

The primary issue this comprehensive study will address is assessing degraded ecosystem habitats along the Lower Platte River of eastern Nebraska. Transportation infrastructure, bank stabilization, levees, irrigation, and other encroachments and land use changes have degraded riverine and floodplain habitats along the Lower Platte River. This river reach encompasses a portion of the internationally significant Central Flyway, contains regionally important environmentally sensitive areas, and critical habitats for three federally listed species and several state listed species of concern, but is also home to over 50% of the total population in the State of Nebraska. This region of the State is seeing continued population growth and increases in development are putting even more pressure on these habitats. The Nebraska Natural Legacy Project identified 17 at-risk native species at risk on the Lower Platte including: interior least tern, piping plover, pallid sturgeon, blue sucker, sturgeon chub, lake sturgeon, Blanding's turtle, western prairie fringed orchid, wood thrush, Bell's vireo, and North American river otter. The Lower Platte is frequented by endangered pallid sturgeon during spring runoff and its numerous sandbars are used for nesting by endangered interior least terns and threatened piping plovers. Remnant riparian cottonwoods and upland hardwoods provide wintering sites for an average of 45-50 bald eagles and shelter and nesting habitat for neo-tropical migratory birds. The Association of State Wetlands Managers estimates that the State of Nebraska has lost approximately 35% of its historic wetlands, and the 1991 Nebraska Wetlands Priority Plan identifies acquisition and restoration of remnant wetlands along the Lower Platte River corridor, the Todd Valley (adjacent wetlands in the vicinity of the Lower Platte), and the Saline Wetlands within the Salt Creek Watershed as priority sites.

The goal of the study would be to develop an integrated water resource development plan to restore riverine and floodplain habitats by improving natural channel forming processes, restoring connectivity between the river and its floodplain along the corridor, and restoring side channel and wetland/riparian habitats to support native species. Restoration objectives would contribute to habitats that support the

special status species listed but would aim for restoring the overall abundance and quality of habitats available contributing to system connectivity and biodiversity without limiting objectives to those species. The study presents an opportunity to develop a comprehensive plan that could also be used by the State of Nebraska and regional and local governments to guide on-going and future development that supports critical social and economic values in a sustainable manner.

Budget Criteria:

Habitat Scarcity: Unique sand bed, braided large river system (NAS); 35% wetlands loss (ASWM); 90% saline wetlands loss (Natural Legacy Project); invasive vegetation encroachment (Natural Legacy Project); and multiple ESA species. The Lower Platte is a critical large river tributary to the Missouri River system providing vital fish, wildlife, and bird habitat including breeding/spawning and rearing habitat. **Score = 25**

Connectivity: Direct reconnection of main channel to backwaters, chutes, and floodplain (where feasible) along 110 miles of river providing linkages to habitats in the Central Flyway, the Nebraska Sand Hills, and the Salt Creek Saline Wetlands for threatened and endangered species and species of concern. **Score = 18**

Special Status Species: USFWS 1994 Biological Opinion on Platte River operations. Platte River Recovery Implementation Program, basin-wide effort by Department of Interior, CO, NE, & WY for Endangered Species Habitat on the Central Platte, authorized 8 May 2008. 17 at-risk native species (Nebraska Natural Legacy Project) on the Lower Platte. 40-50 over-wintering bald eagles annually. Internationally unique and endangered Salt Creek tiger beetle. **Score = 10**

Hydrologic Characteristic: The Loup and Elkhorn Rivers and Salt Creek tributaries provide a more stable flow regime on the Lower Platte than other reaches of the river. Opportunities to improve flows on the Central Platte are underway by others and the study would investigate opportunities to capitalize on integrating the restored flows into furthering the value of restored habitats on the Lower Platte. Study integrates water resource management, including critical for water supplies for Omaha and Lincoln, which rely on the alluvial aquifer beneath the river. **Score = 15**

Geomorphic Characteristic: Study aims to restore best attainable condition characteristics of the unique braided river, including allowing natural meanders and geographic functions through obstruction removal, reconnection of floodplain habitat, and restoration of habitat form including actions that will assist in maintaining natural formation and maintenance of sandbars, multiple channels, and floodplain processes. The more stable flow regime of the Lower Platte sustains some scouring flows and meandering processes. **Score = 15**

Self-Sustaining: N/A **Score = ##**

Plan Recognition: Links to Platte River BiOp, USFWS recovery plans for pallid sturgeon, interior least tern, and piping plover. Links to the Lower Platte Basin-Wide Water Management Plan under development in 2016. **Score = 10**

Budget Criteria Summary: The Comprehensive Plan will leverage and synthesize data from numerous projects being carried out by the Corps and others and apply a systems-approach to restoring and reconnecting habitats producing immediate and sustainable benefits for this river system. The Plan will identify key stressor variables affecting the habitats and linkages to potential restoration opportunities. The study will culminate in an integrated water resource management plan identifying a suite of actions that restore these habitats and shape future development actions in a manner that sustains and preserves the Lower Platte as a critical resource supporting ecological, social, and economic values. The study will formulate an implementation strategy that the local

sponsor can then use to pursue project funding through federal, state, local, and non-profit means. Comprehensive restoration and integration of water resources needs on the Lower Platte River is both regionally and nationally significant, and the study will set the stage for achieving that end through collaboration and partnerships.

Regionally Significant: The Lower Platte River provided critical regional and national benefits as a unique and scarce large braided river system. The river is a priority area for FWS and the Nebraska Game and Parks Commission due to its critical role in the Central Flyway, importance to federal and state listed species and its importance to fisheries resources on both the Platte and Missouri Rivers. The study area specifically links the Central Platte and Missouri River regions that have specific BiOp actions, and potential exists to restore connectivity throughout the reach. **Total Score = 63 [Y]**

Nationally Significant: N/A **Total Score = 63 [N]**

Relationship to Corps or Projects Funded by Other Agencies: The Corps has constructed several FRM projects and one AER project within the Lower Platte Basin historically, and is currently studying flood risks in the vicinity of the City of Fremont which has one of the highest flood risks in the state with the entire City being located in the Platte River floodplain. The State of Nebraska Department of Roads has been improving highway transportation networks in eastern Nebraska in response to population growth and traffic volumes. NRCS and others have established several wetland restoration sites along the Platte River. The Department of Interior and States of Wyoming, Colorado, and Nebraska are partnering on implementation of the Platte River BiOp on the Central Platte River upstream from the study area reach.

**LOWER PLATTE SOUTH
NATURAL RESOURCES DISTRICT**



3125 PORTIA STREET
P.O. BOX 83581 · LINCOLN, NE 68501-3581
(402) 476-2729 · FAX (402) 476-6454
www.lpsnrd.org

April 13, 2016

Colonel John W. Henderson, P.E., Commanding
United States Army Corps of Engineers, Omaha District
1616 Capitol Ave
Omaha, NE 68102-4901

RE: Lower Platte River Watershed Restoration, Nebraska - Aquatic Ecosystem Restoration
Comprehensive Study—Letter of Intent

Dear Colonel Henderson:

A comprehensive study is needed to better assess degraded ecosystem habitats and identify potential actions to achieve and sustain a healthier river ecosystem in the Lower Platte River Watershed. The Lower Platte River Watershed provides the drinking water supply to over 50% of Nebraska's population who depend on the Platte River for drinking water. The 24 communities and 8 counties within the Lower Platte River constitute the area of the state with the largest sustained population growth. The Lower Platte River is also home to three federally threatened and endangered species and additional species of concern. The increasing population and changes in land use in the watershed along the Lower Platte River pose significant challenges to continue to protect and maintain necessary quality habitat and water supply. The LPRCA continues to work collaboratively to address these issues but additional study is needed to integrate data to identify projects that can be conducted across the watershed to restore degraded habitat and provide immediate and multiple benefits to the watershed.

The Lower Platte South NRD, on behalf of the LPRCA stands ready and able to serve as local sponsor for this project and to cost share at a rate of 75-25 on this comprehensive study currently estimated to cost \$3 million.

Sincerely,

A handwritten signature in blue ink, appearing to read 'Glenn Johnson', is written over the typed name.

Glenn Johnson
General Manager

Tom Mountford

From: Paul Zillig
Sent: Monday, October 24, 2016 4:42 PM
To: Johnson, Greg NWO; Thompson, Bradley E NWO
Cc: John Miyoshi; John Winkler; David Potter; Marlin Petermann; Tom Mountford
Subject: RE: Lower Platte Watershed Study -- Potential New Start (UNCLASSIFIED)

Greg/Brad:

I've discussed this with both NRDs and my Board Chair and we are interested in requesting the Lower Platte Watershed Study be submitted as a potential New Start study for the FY 17 Workplan.

Paul

-----Original Message-----

From: Johnson, Greg NWO [mailto:Greg.Johnson@usace.army.mil]
Sent: Thursday, October 20, 2016 4:46 PM
To: Paul Zillig
Cc: Thompson, Bradley E NWO
Subject: Lower Platte Watershed Study -- Potential New Start (UNCLASSIFIED)
Importance: High

CLASSIFICATION: UNCLASSIFIED

Paul:

Attached please find a fact sheet we prepared this past spring summarizing the proposed Lower Platte Watershed Study, and the Letter of Intent to cost-share the study. These documents were required for requesting potential New Starts for the FY18 President's Budget Request.

As we discussed on the phone, ASA(CW) and OMB are considering including potential New Starts in the FY17 Workplan, and they are starting with the potential FY18 New Start list. HQUSACE has asked the Districts to contact their sponsors on any potential New Starts to assess whether those sponsors would be ready, willing, and able to sign an FCSA and initiate a New Start study in the spring of 2017 (Mar-Apr timeframe).

I have placed calls to John Miyoshi and Marlin Petermann in addition to yourself to discuss, but am awaiting their return calls. Please feel free to coordinate with both entities. We have a deadline of providing a response to HQUSACE by the end of the day on 25 October.

A positive response affirming the NRDs and Lower Platte Corridor Alliance's interest in pursuing a New Start in FY17 doesn't necessarily guarantee it will be approved by ASA(CW) and OMB. In addition, a negative response will not affect consideration of this New Start as part of the FY18 PBUD which is still being evaluated and will be released sometime in early February 2017.

Please let Brad and I know if you would like us to include the Lower Platte Watershed Study in the list of potential New Start studies for the FY17 Workplan.

Let me know if you have any questions.

Schuyler Section 205 Study

Status Call

October 26, 2016 11am to noon

Attendees: Mayor Reinecke, Mary Peschel, Jim McGowen, Tom Mountford, Bob Heimann, Bob Worden, Tom Gorman, Andrew Barry, Gwyn Jarrett

DISCUSSION:

1. Actions that have taken place:

- Second Amendment to PPA was signed by city and NRD
- Final As-Builts have been received/ contract is being reviewed for close out
- Draft O&M Manuals completed
- Corps has been responding to questions from JEO in preparation of plans and specs to clean out the ditch. No additional COE permit will be required to clean out the ditch to the “as-built” condition under the civil works process which this project falls under.
- LERRD crediting for \$983,262.50 is complete.
- All WIK submitted before Mark retired has been reviewed. Formal documentation will soon be complete and a letter will be provided to sponsor.

2. Gate Discussion

During a May 2016 call, an inquiry was made as to the need for a gate near the Coop. Concern was expressed that the COE would come back in 5-10 years and require a gate. A gate was added to amendment. Questions have been asked on the type of gate needed and if one is really needed.

Access and maintenance is sponsor responsibility. COE position is that if sponsor thinks no gate is needed that is acceptable. If in the future, sponsor finds that individuals are driving on the levee and ruts are developing, a gate may be appropriate to install at that time. It will be a sponsor responsibility.

The O&M Manual does not reference this gate. The sponsor will be held responsible in carrying out maintenance for items outlined in the O&M Manual.

3. Ditch Clean out plans and specs

JEO has been working diligently in the preparation of plans and specs for the ditch clean out. Coordination has occurred with the COE. Plans and specs were sent for review to the COE and NDOR on Oct 26th. Award of a contract is targeted for November 11. Weather permitting, the work will be completed this fall. The COE will provide comment on the plans and specs. One comment to be aware of is that a note needs to be added to the plans not to disturb existing drainage structures to address any concern related to the drainage structure No. 1 being impacted.

4. O & M Manual Status

The Draft Final O&M Manual has been sent to the Schuyler, LPNNRD, NDOR and Union Pacific on CD's. Comments have been requested to be submitted by November 18th to the COE. All are encouraged to closely review the drawing for accuracy.

The O&M Manual goes into effect when the project is turned over. It will be approved before the project is turned over. Once turned over the sponsor would coordinate with the Readiness Branch who will oversee the project. Inspections will be completed by the Missouri River Project Office.

The project will fall under PL84-99. In future flood situations, the COE will come in and repair damage at 100% federal expense when the projects have a positive BCR.

Additional Information provided not discussed on call:

The O&M Manual includes "**APPENDIX B STANDARD OPERATING PROCEDURES For LEVEE SYSTEM INCLUDING OLD HIGHWAY 30 CLOSURE STRUCTURE**". Since this appendix is specific to the Schuyler Project any changes to the SOP recommended by the City will make it more useful. The SOP will be a "living document", to be revised by the City based on experience in high water events.

5. Levee Evaluation Report

The draft is prepared and ready for Agency Technical Review. Any comments received on the report will be considered. The report will go to FEMA. The final product is a Letter of Map Revision for the city of Schuyler. It's expected the LOMR process will be completed in 2017. An email and call have been made to the ATR lead. Follow-up will occur to schedule the ATR review.

6. Action Items

- Corps will provide comments on plan to JEO NLT Wednesday, November 2.
- Entities reviewing O&M Manual will provide comment NLT November 18.
- City will proceed to target an award for the ditch cleanout on November 11.
- Corps will make changes and begin routing manual for approval. Based on information known now, it's anticipated the O&M Manual will be approved by the first or second week of December.

Tom Mountford

From: Village of Platte Center
Sent: Thursday, October 27, 2016 10:58 AM
To: tmountford@lpnrd.org
Subject: Platte Center Creek Project

Good morning Tom:

I am just giving you a heads up on our maintenance on Elm Creek. Wemhoff Construction has completed another phase of the ongoing maintenance on the creek bank. He has submitted a bill for \$22,714.00. I believe that in the past, the Village has paid the bill, then submitted proof of payment and copy of his bill. We will pay the current bill on November 8th, then I will remit that documentation.

Please let me know if this is correct and if you have any questions.

Sincerely
Karla Costello

Wemhoff Construction

P. O. Box 257
 254 D. Street
 Platte Center, NE 68653-0257
 402-246-3955

Date	10/22/2016
Invoice #	1626

Village of Platte Center P.O. BOX 125 Platte Center, NE 68653

Date	Description	Rate	Amount
10/14/2016	RESHAPED AND RIP RAPED ELM CREEK BANK SOUTH OF 4th STREET.		
	57 hrs. Excavator.	150.00	8,550.00
	41 hrs. Track Loader	145.00	5,945.00
	24 hrs. Dozer.	150.00	3,600.00
	3.5 hrs. Grader.	95.00	332.50
	2.5 hrs. Scraper.	155.00	387.50
	2 hrs. Dump Truck	80.00	160.00
	RENTED EXCAVATOR AND JACK HAMMER	3,450.00	3,450.00
	Seeding	119.00	119.00
	Labor	20.00	170.00
<i>Thank You</i>			
1.5% per month interest will be added after 30 days from invoice date.		Total	\$22,714.00