

Board of Education Retreat
Monday, March 16, 2026 5:00 PM
Osteria Kayla
406 N Main Street
Fremont, NE 68025

1. Special Meeting Called to Order and Roll Call
 - 1.1. Pledge of Allegiance
2. Review of DLR Plans
 - Phase A
 - Phase B
 - Phase C
 - Phase "Z"
3. Review from Community Engagement and Any Discussion
4. Discussion of other needs and future-leading building and facilities projects
 - Van Parking
 - Parking Lot and Spaces
 - Track Resurface
 - Playground
5. Adjourn

ARLINGTON
PUBLIC SCHOOLS

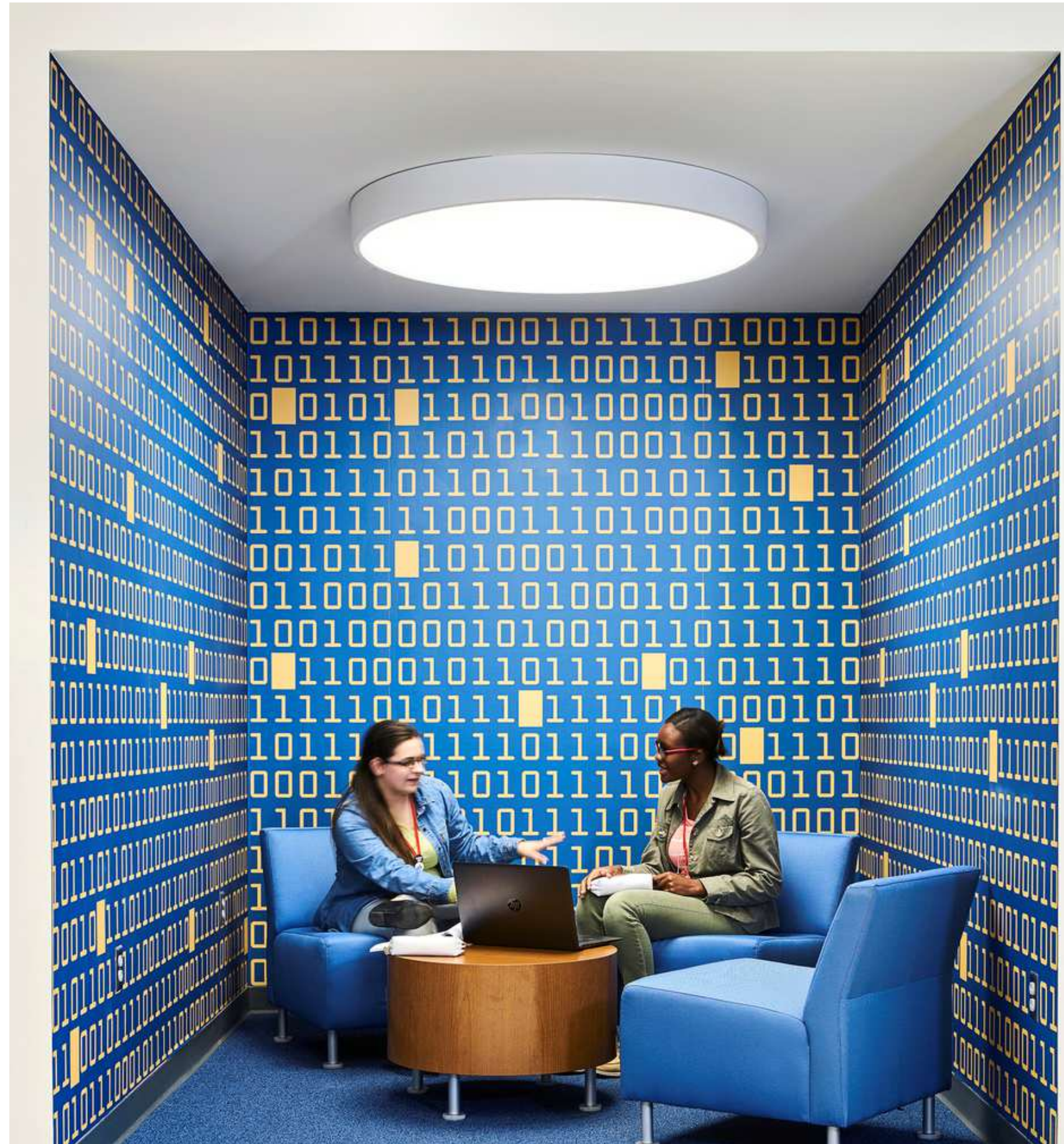


Visioning Workshop
January 12, 2026

WELCOME

Agenda

- 01 Welcome & Introductions
- 02 Recap
- 03 Option Review
- 04 Cost Estimating
- 05 Community Event Share Discussion



Recap





WELCOME

Workshops

Why Change?

Understanding School Design

Learning Connections

Priorities Activity

Pictures Worth a 1000 Words

I See | We See

A Day in the Life Activity

Visual Listening

Design Your Dream school



WE SEE

We See Statement

We see Arlington Public Schools with modern facilities that stay true to our rural roots—an inviting, community-centered place where students feel valued, build real-world skills, and grow with confidence in a functional, inspiring space.



GUIDING PRINCIPALS



Welcoming and Inclusive: Create environments where every person feels safe, valued, and invited.



Foster Experiential Learning: Design for curiosity, creativity, and hands-on, real-world engagement.



Support Well-Being and Nature Connection: Promote health, calm, and whole-person development through nature-rich, wellness-centered design.



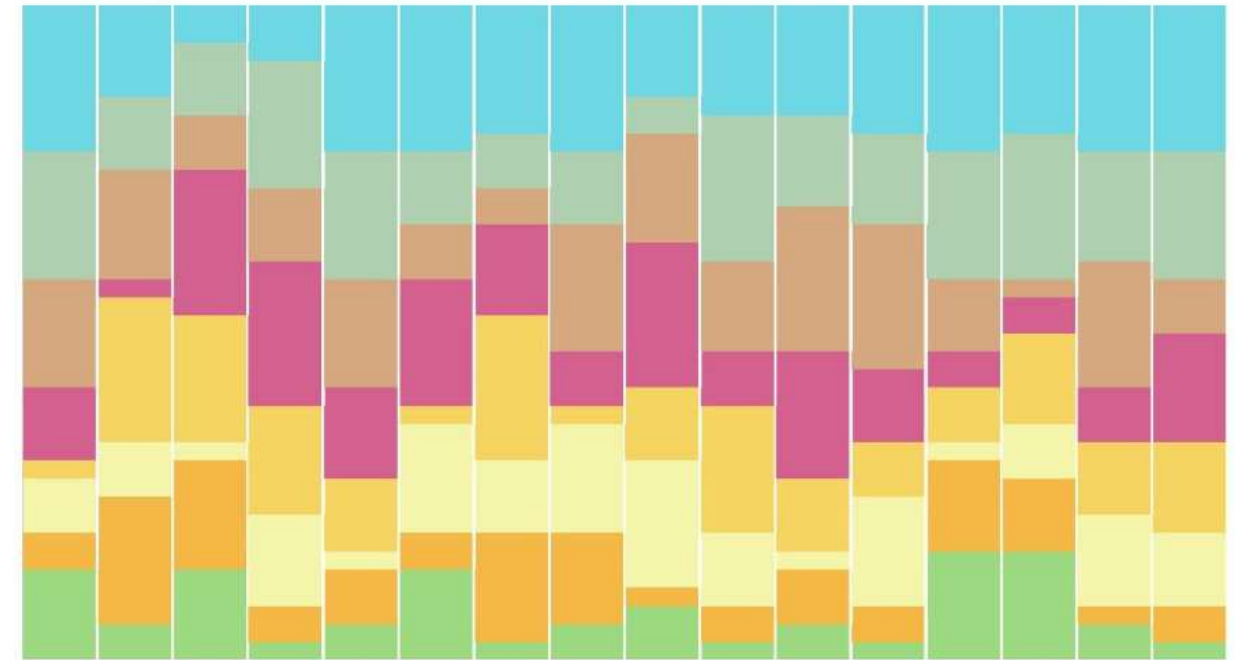
Design with Purpose and Future Vision: Build functional, timeless spaces that are adaptable, innovative, and grounded in community heritage.

VISION

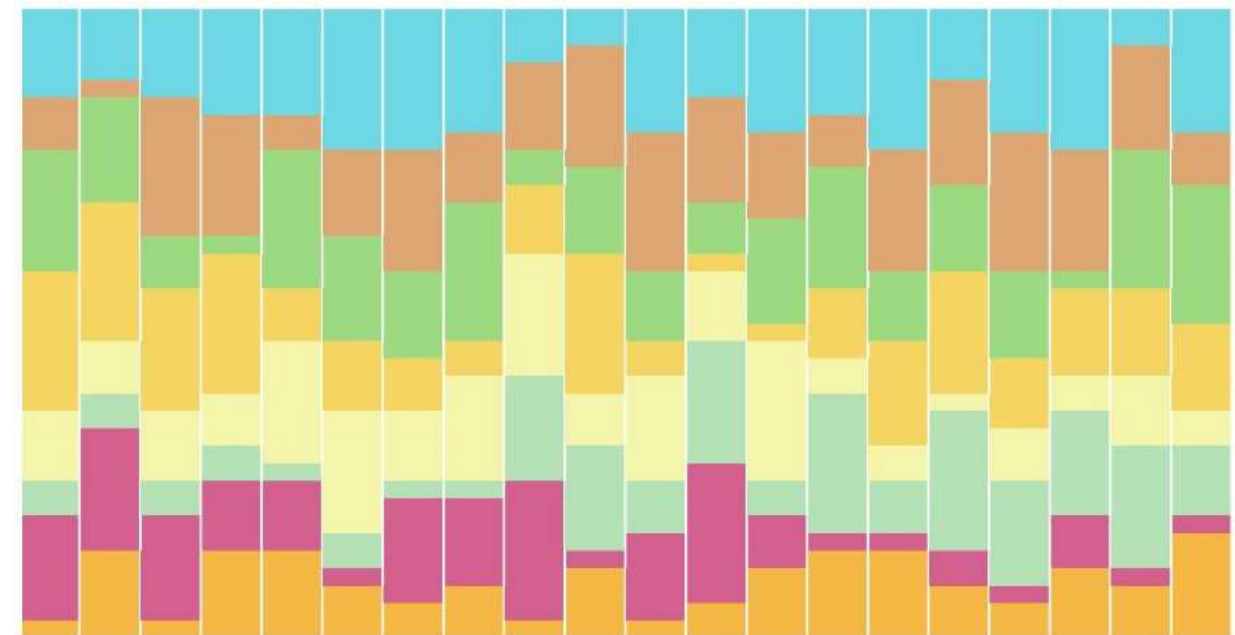
Participant Priorities

Arlington staff, faculty, parents, and community members were asked to rank their top priorities for the project's overall success to gain a further understanding of the communities needs. Nine unique priorities were provided based on information previously gathered from teacher interviews. Each participant ranked the priorities in order from high to low based on the individual's definition of success.

EXPANDED ACADEMIC PATHWAYS (CTE RENO)	ACTIVITIES ENTRY IDENTITY & EXPANDED COMMONS	FLEXIBLE LEARNING & COLLABORATION SPACE
FINE & PERFORMING ARTS EXPANSION	EXPANDED ATHLETIC SPACE (WRESTLING ROOM)	SPECIAL EDUCATION & RESOURCE SPACE
LOCKER ROOMS & RESTROOMS	PARKING AND SITE CIRCULATION	OTHER (WRITE IN)



Priority rankings following the first workshop with the community. Expanded academic pathways, activities entry identity, and flexible learning space ranked as the top three priorities.

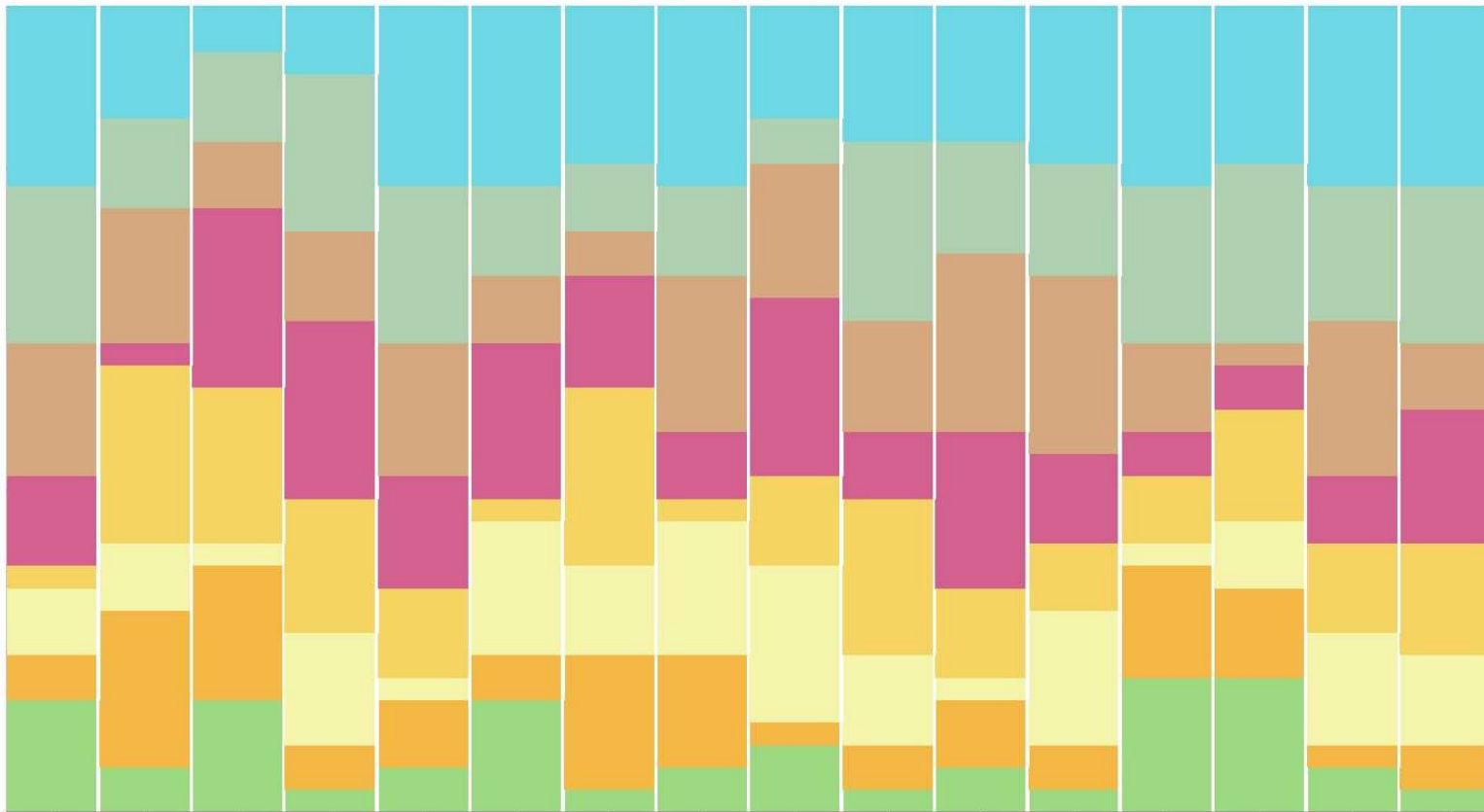


Priority rankings from students, parents, and teachers following parent-teacher conferences. Expanded academic pathways and flexible learning and collaboration space remained in the top three priorities with the addition of parking and site circulation

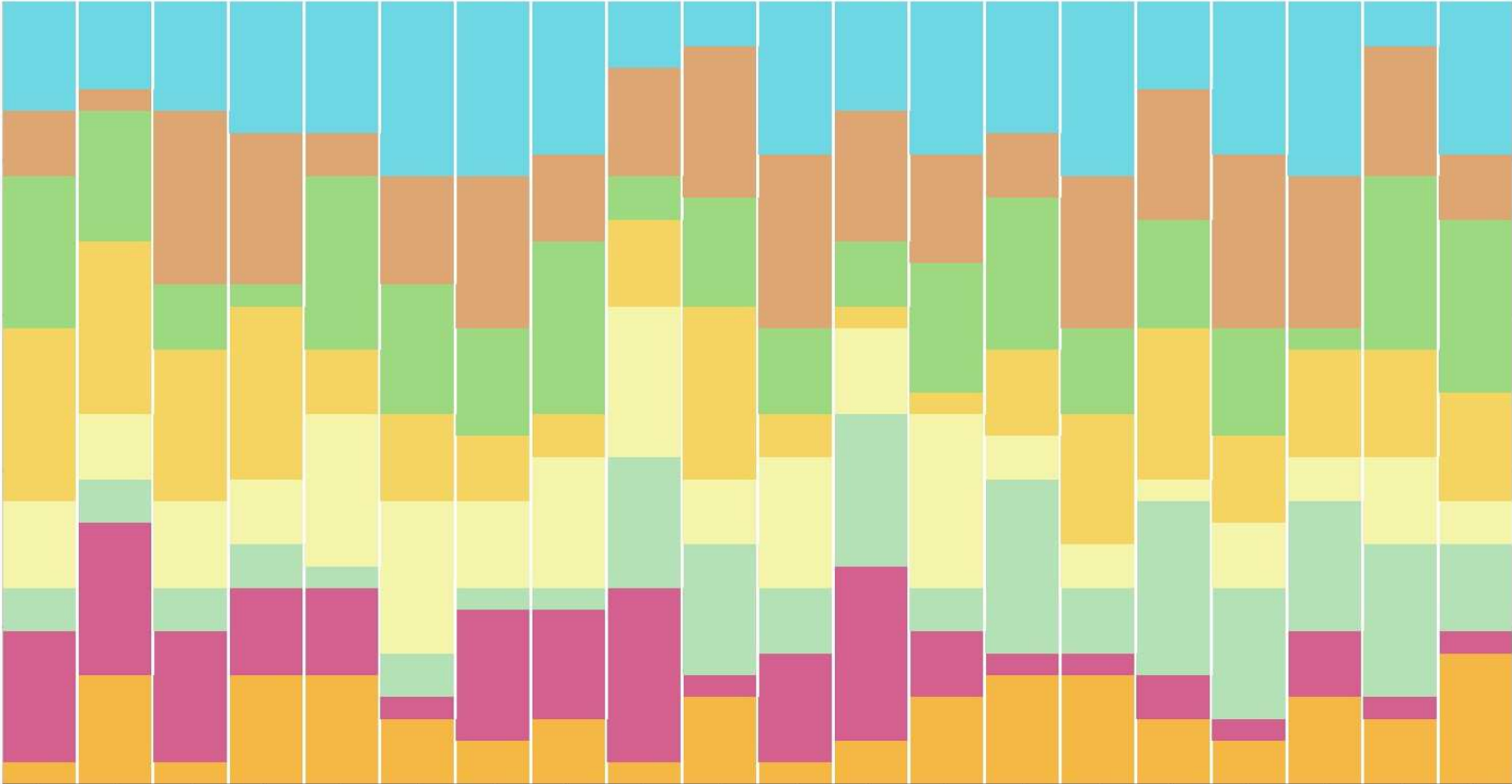
Recap



WORKSHOP PRIORITY RESULTS



PARENT-TEACHER CONFERENCE PRIORITY RESULTS



- Expanded Academic Pathways (CTE Reno)
- Activities Entry Identity & Expanded Commons
- Flexible Learning & Collaboration Space
- Fine & Performing Arts Expansion
- Expanded Athletic Space (Wrestling Room etc.)
- Special Education & Resource Space
- Locker Rooms & Restrooms
- Parking & Site Circulation

Recap | Learning Connections

SPACES FOR CREATIVE WORK

LARGE GROUP SPACES

DIFFERENTIATED TEACHING

VISIBLE LEARNING

TEACHING THROUGH INSTRUCTIONAL TECHNOLOGY

FURNITURE THAT SUPPORTS INDIVIDUALS

OUTDOOR SPACES

PRESENTATION SPACES

AUTHENTIC/REAL WORLD LEARNING

FLEXIBLE TECHNOLOGY

INQUIRY BASED TEACHING

ERGONOMIC FURNITURE

CONNECTIONS TO NATURE

OPTIONAL PRIVACY

HEALTH AND WELLNESS

WORKSHOP MODEL TEACHING

SPACES THAT ALLOW MOVEMENT

PERSONALIZED LEARNING

FLEXIBLE FURNITURE TYPES

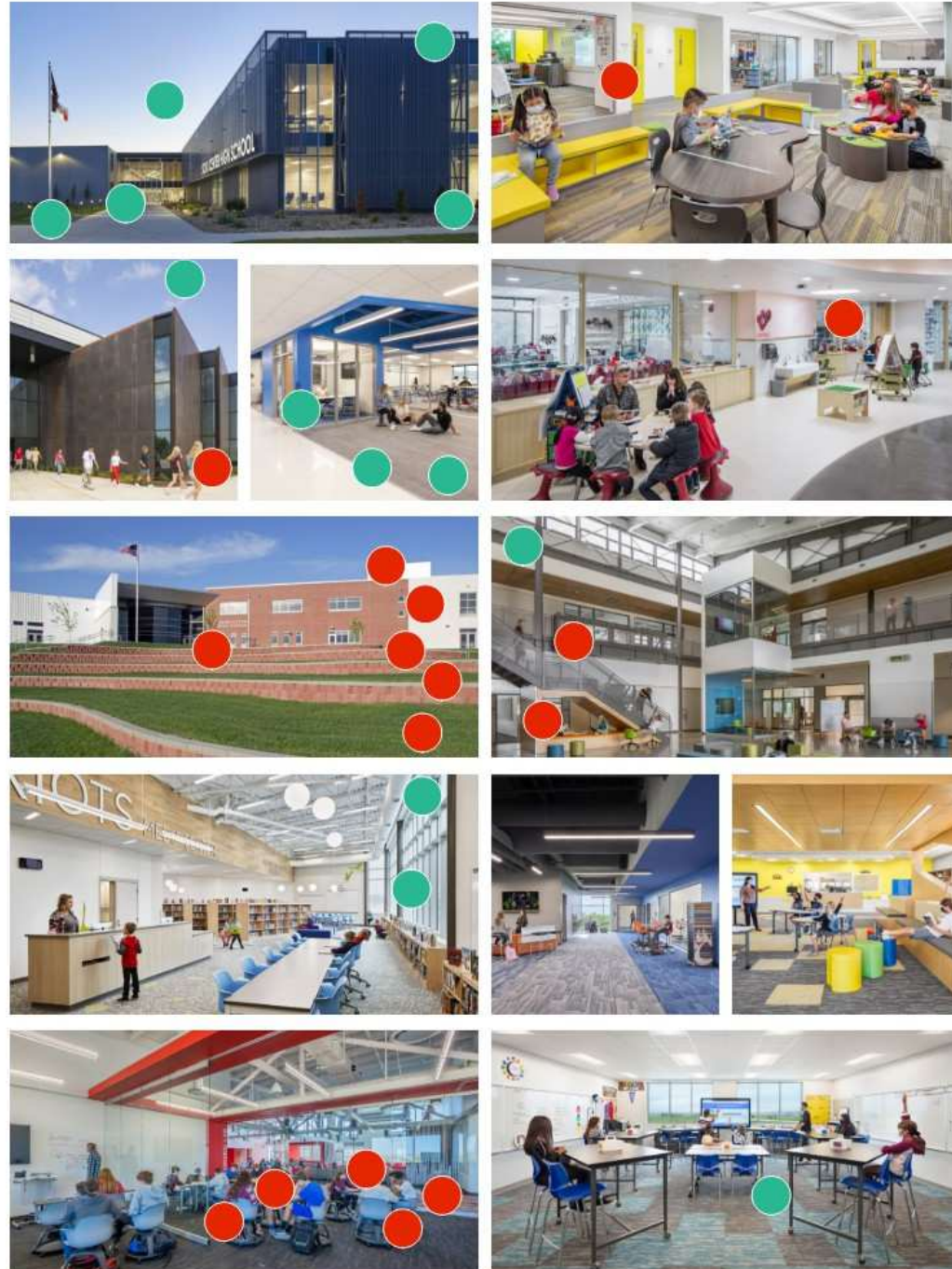
VISUAL LISTENING



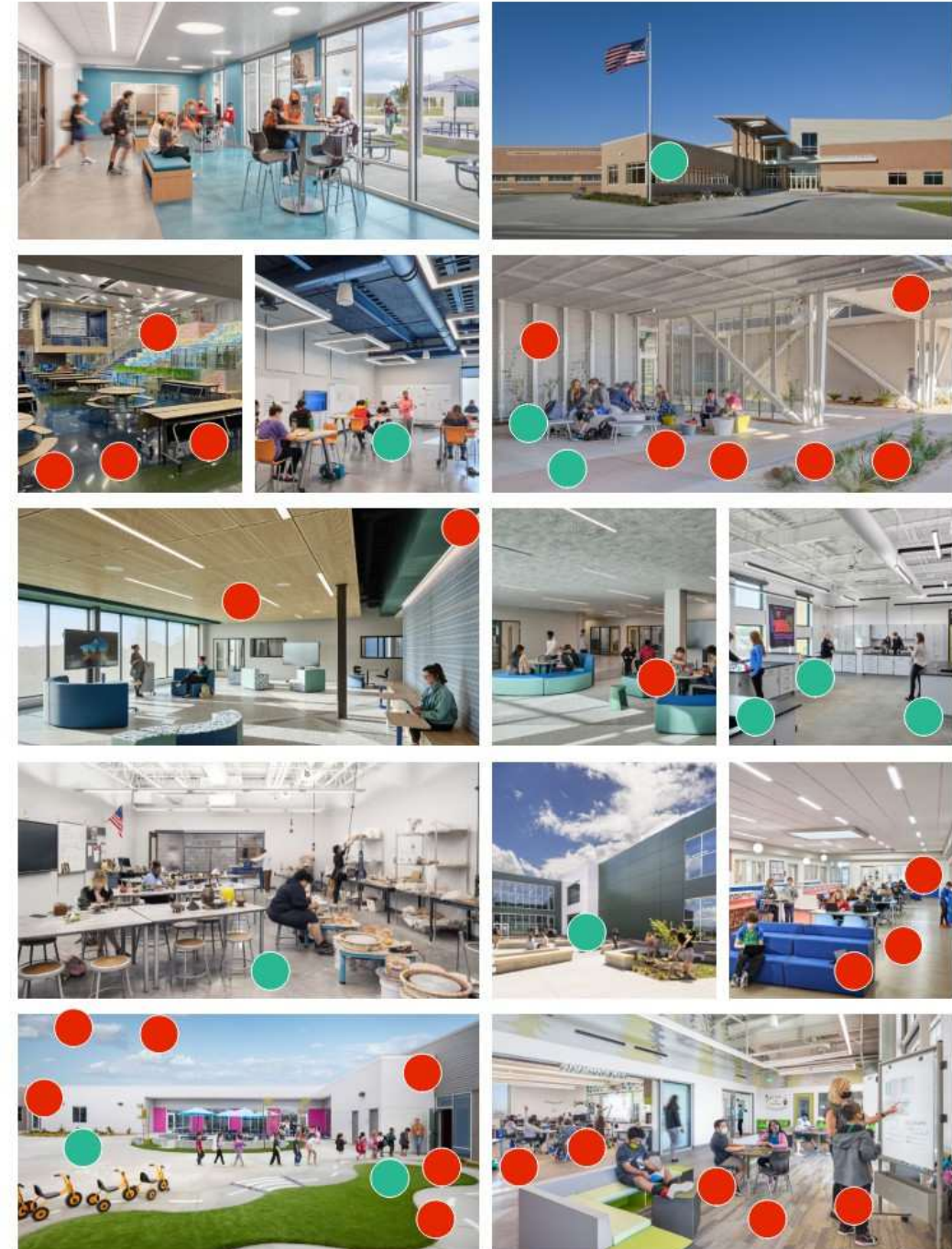
EDUCATIONAL VISUALIZATION

Visioning Photo Exercise

● Likes ● Dislikes



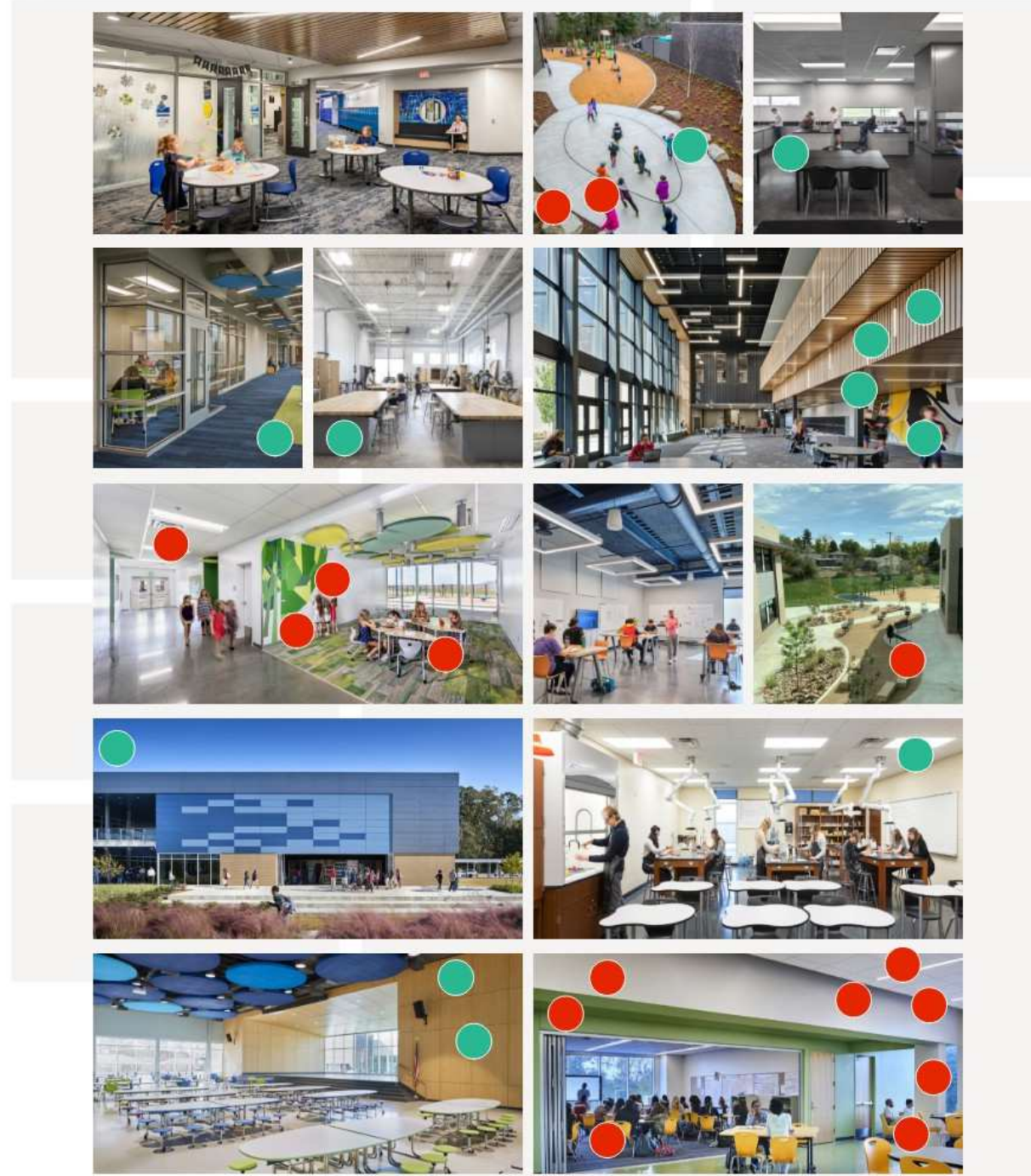
● Likes ● Dislikes



EDUCATIONAL VISUALIZATION

Visioning Photo Exercise

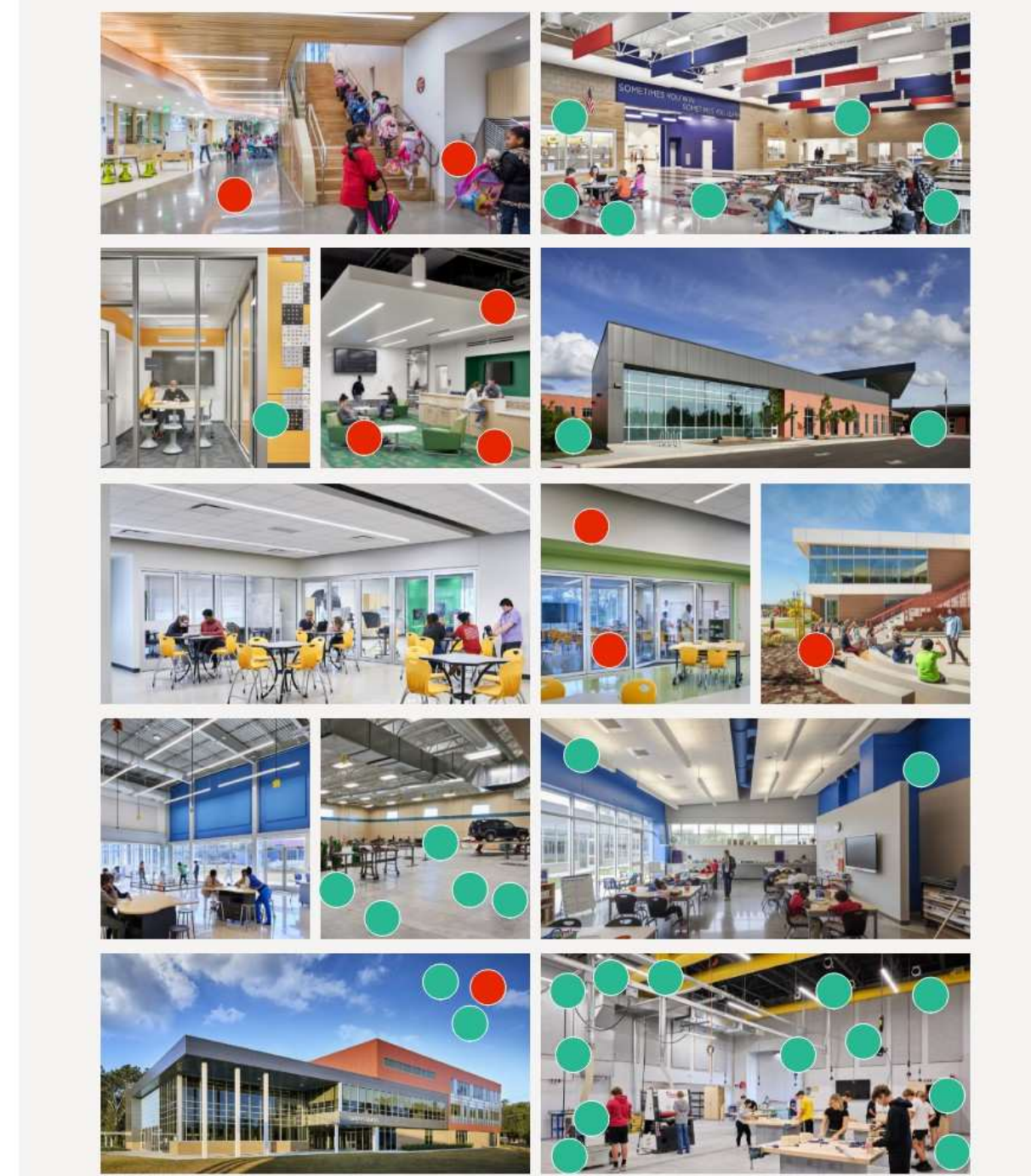
● Likes ● Dislikes



EDUCATIONAL VISUALIZATION

Visioning Photo Exercise

● Likes ● Dislikes



Design Your Dream School



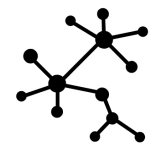
DREAM SCHOOL



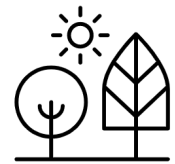
FRONT DOOR



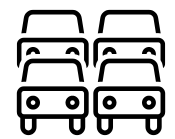
OUTDOOR LEARNING ENVIRONMENTS



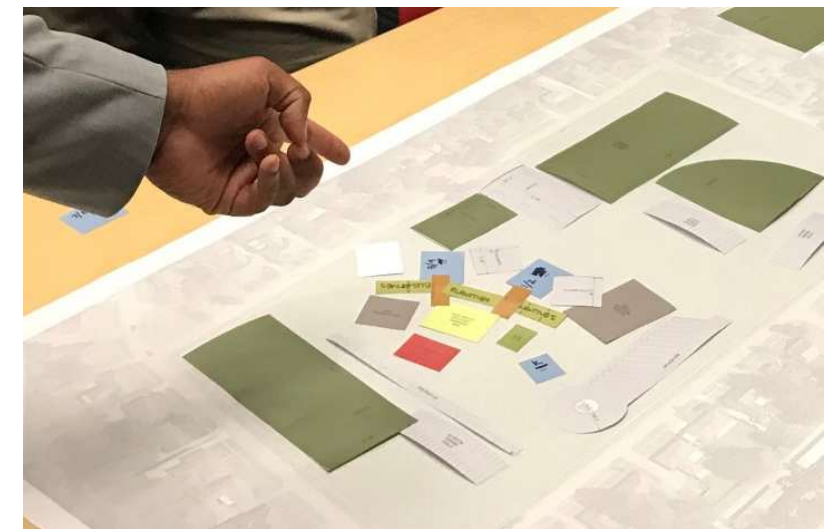
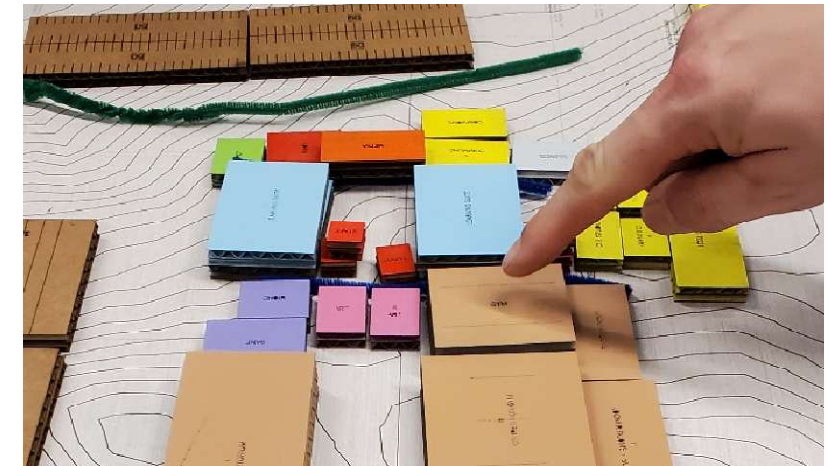
BUILDING ADJACENCIES



OUTDOOR PLAY / ACTIVITY



TRAFFIC FLOW – BUS, CAR, PEDESTRIAN



DREAM SCHOOL



CRITICAL DESIGN ELEMENTS



SPECIFIC FACILITY NEEDS



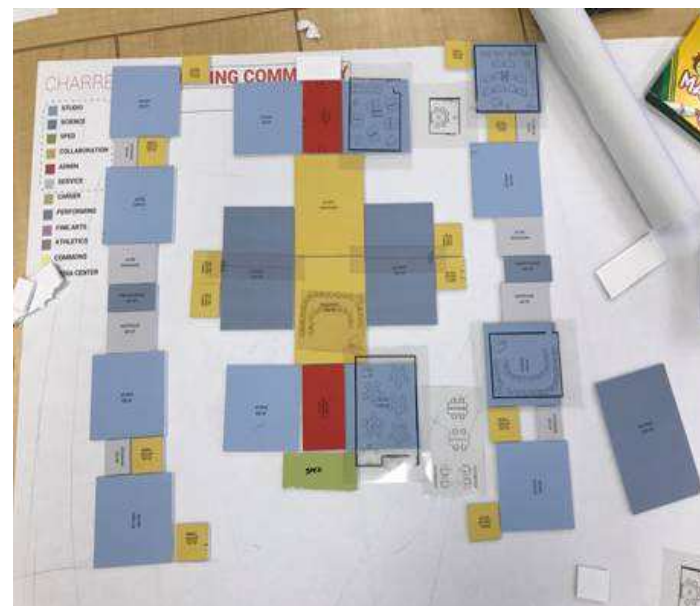
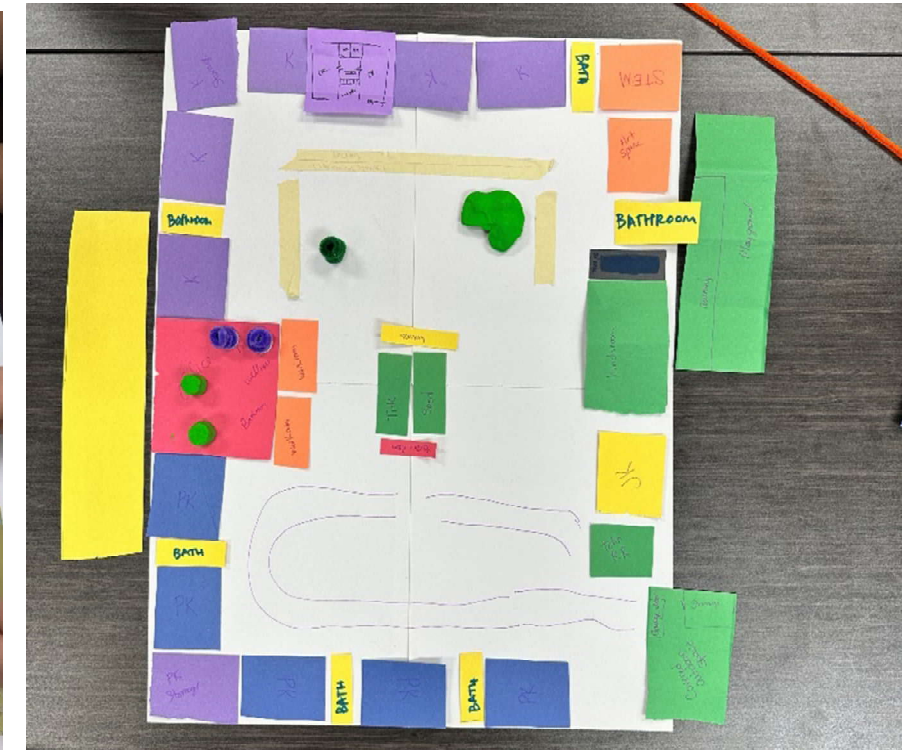
UNIQUE OPPORTUNITIES



STUDENT AND STAFF NEEDS



IMPORTANT ADJACENCIES



Arlington Public Schools

PK-12 School - Space Program Summary

	EXISTING			PROPOSED			DEFICIENCY	2026 Scope
DEPARTMENT / SPACE	# of Spaces	ea Space	Total Net SF	# of Spaces	ea Space	Total Net SF	Total Net SF	Total Gross SF
LIFE SKILLS			1240	subtotal		2300	1060	3220
15.01 Classroom	1	620	620	1	900	900	280	
15.02 Foods lab	1	620	620	1	900	900	280	
15.03 Pantry / Storage			0	1	100	100	100	
15.04 Clothing / Textiles Lab			0	0	0	0	0	
15.05 Samples Storage			0		0	0	0	
15.06 Laundry / Utility			0	1	80	80	80	
15.07 Child Development Lab			0			0	0	
15.08 Observation			0		0	0	0	
15.09 Storage			0	1	100	100	100	
15.10 Changing / Toilet			0	1	120	120	120	
15.11 Office			0			0	0	
15.12 Collaboration Space			0	1	100	100	100	
15.13			0		0	0	0	

Notes:

PHYSICAL EDUCATION / ATHLETICS		38770		subtotal		44540		5770		6924	
20.01	Lobby	1	1500	1500	1	1500	1500	0			
20.02	Public Restrooms	2	350	700	2	350	700	0			
20.03	Concessions	1	200	200	1	200	200	0			
20.04	Gymnasium - Competition	1	10800	10800	1	10800	10800	0			
	.01 Elevated Track			0			0	0			
	.02 Gymnasium Storage			0	1	300	300	300			
	.03 Athletic Storage			0	1	300	300	300			
20.04	Gymnasium - Competition	1	7600	7600	1	7600	7600	0			
	.01 Gymnasium Storage	2	200	400	2	200	400	0			
	.02 Athletic Storage	1	280	280	1	280	280	0			
20.05	Gymnasium - Elementary	1	6900	6900	1	6900	6900	0			
	.01 Storage	1	335	335	1	335	335	0			
20.06	Weight Room	1	3950	3950	1	3950	3950	0			
	.01 Weights Storage			0	0	0	0	0			
20.07	Exercise / Fitness / Aerobics			0	0	0	0	0			
	.01 Exercise Storage			0	0	0	0	0			
20.08	Wrestling Room	0	0	0	1	4000	4000	4000	3 mats		
	.01 Wrestling Storage	0	0	0	1	100	100	100			
20.09	Classroom / Team Meeting Room	0	0	0	1	800	800	800			
20.10	Training Room	1	280	280	1	280	280	0			
	.01 Training Storage			0	1	100	100	100			
20.11	Laundry			0		0	0	0			
20.12	MS Locker Room	2	950	1900	2	950	1900	0			
	.01 Showers / Drying	8	10	80	8	10	80	0			
	.02 Toilet	2	60	120	2	60	120	0			
20.13	HS Locker Room	2	720	1440	2	720	1440	0			
	.01 Showers / Drying	9	10	90	9	10	90	0			
	.02 Toilet	2	100	200	2	100	200	0			
20.13	Athletic Locker Room	2	500	1000	2	500	1000	0			
	.01 Showers / Drying	2	120	240	2	120	240	0			
	.02 Toilet	2	50	100	2	50	100	0			
20.14	Official's Locker Room	2	65	130	2	65	130	0			
	.01 Showers / Drying	2	25	50	2	25	50	0			
	.02 Toilet			0	0	0	0	0			
20.15	Staff Locker Room			0		0	0	0			
	.01 Showers / Drying			0		0	0	0			
	.02 Toilet			0		0	0	0			
20.16	Phys. Ed. Office	3	65	195	3	65	195	0			
20.17	Athletic Office	2	100	200	2	100	200	0			
20.18	Storage	1	80	80	1	250	250	170			

Notes:

	EXISTING			PROPOSED			DEFICIENCY	2026 Scope
DEPARTMENT / SPACE	# of Spaces	ea Space	Total Net SF	# of Spaces	ea Space	Total Net SF	Total Net SF	Total Gross SF
AUDITORIUM			500	subtotal		13510	13010	18914
3.01 Lobby			0	1	2000	2000	2000	
3.02 Ticket Booth			0	1	120	120	120	
3.03 Concessions			0	1	150	150	150	
3.04 Seating Area - Main House			0	1	6600	6600	6600	
3.05 Black Box / Forum Seating			0		0	0	0	
3.06 Stage	1	500	500	1	2800	2800	2300	
3.07 Orchestra Pit			0	0	375	0	0	
3.08 Lighting Control			0	1	150	150	150	
3.09 Sound Control			0	1	150	150	150	
3.10 Dressing Room / Toilet							0	
.01 Men			0	1	125	125	125	
.02 Women			0	1	125	125	125	
3.11 Makeup			0	1	240	240	240	
3.12 Green Room			0		0	0	0	
3.13 Scene / Stage Shop			0	1	500	500	500	
3.14 Shop Storage			0	1	50	50	50	
3.15 Stage Storage			0	1	150	150	150	
3.16 Prop Storage			0	1	150	150	150	
3.17 Costume Storage			0	1	100	100	100	
3.18 Flat Storage			0	1	100	100	100	
3.19			0		0	0	0	

Notes:

DEPARTMENT / SPACE	# of Spaces	ea Space	Total Net SF	# of Spaces	ea Space	Total Net SF	Total Net SF	Total Gross SF
STUDENT SERVICES / SUPPORT			1395	subtotal		4375	2980	
24.01 Lockers	0	0	0	0	0	0	0	
24.02 Social Commons	1	500	500	2	500	1000	500	
24.03 Learning Commons			0	3	800	2400	2400	
24.04 School Bank / Flex Room	1	725	725	1	725	725	0	
24.05 Storage	1	170	170	1	250	250	80	

Notes:

DEPARTMENT / SPACE	EXISTING			PROPOSED			DEFICIENCY	2026 Scope
	# of Spaces	ea Space	Total Net SF	# of Spaces	ea Space	Total Net SF	Total Net SF	Total Gross SF
TECHNOLOGY / INDUSTRIAL			5278			9906	4628	13868
TECHNOLOGY / VOCATIONAL ARTS				subtotal				
25.01 Classroom	1	670	670	1	670	670	0	
25.02 Wood Lab	1	1200	1200	1	1200	1200	0	
25.03 Construction Lab			0	1	2000	2000	2000	
25.04 Metals Lab	1	2200	2200	1	2200	2200	0	
25.05 Manufacturing Lab			0	1	1000	1000	1000	
25.06 Auto Mechanics Lab			0	1	480	480	480	
25.07 Auto Body Lab			0		0	0	0	
25.08 Agriculture Classroom	1	840	840	1	840	840	0	
25.09 Technology/Robotics Lab			0	0	0	0	0	
25.10 Finishing Room			0	1	180	180	180	
25.11 Materials Storage	1	168	168	2	168	336	168	
25.12 Project Storage	1	200	200	2	200	400	200	
25.13 Tool Storage			0	2	200	400	400	
25.14 Locker/Changing			0	2	100	200	200	
25.15 Office			0	0	0	0	0	
25.16 Showroom			0	0	0	0	0	
25.17			0		0	0	0	

Notes:

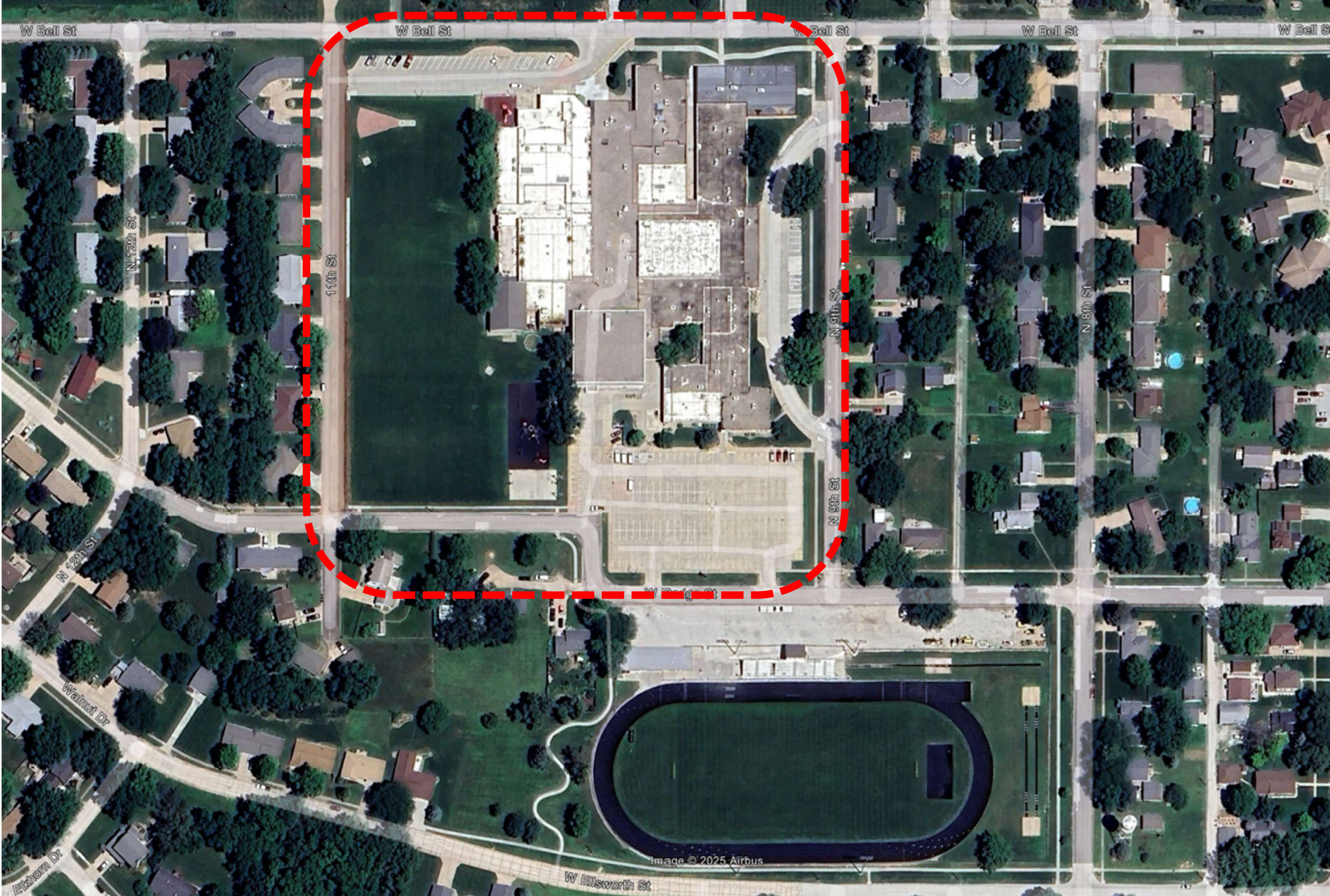
TOTAL NET ASSIGNABLE AREA

BUILDING INFRASTRUCTURE

TOTAL BUILDING AREA

42933

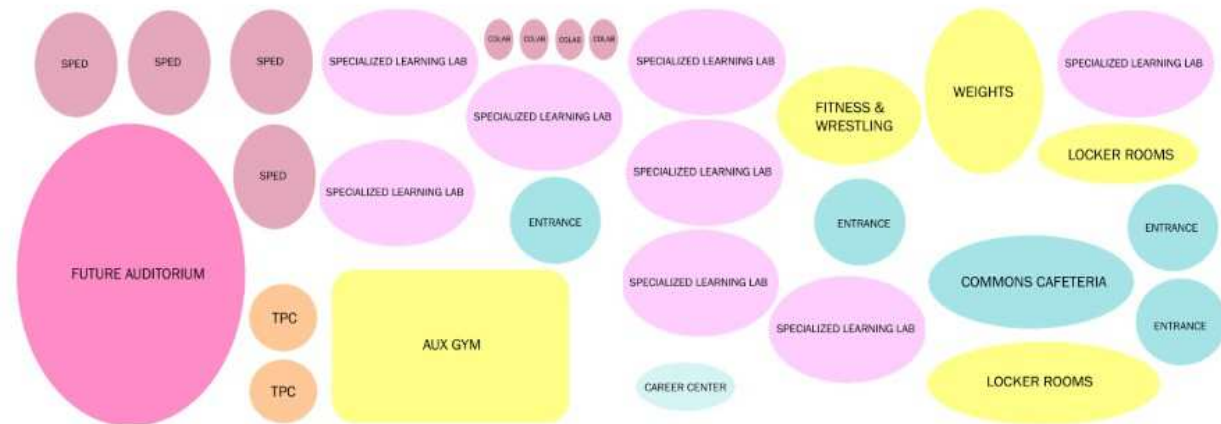
This Number includes a grossing factor for each new space



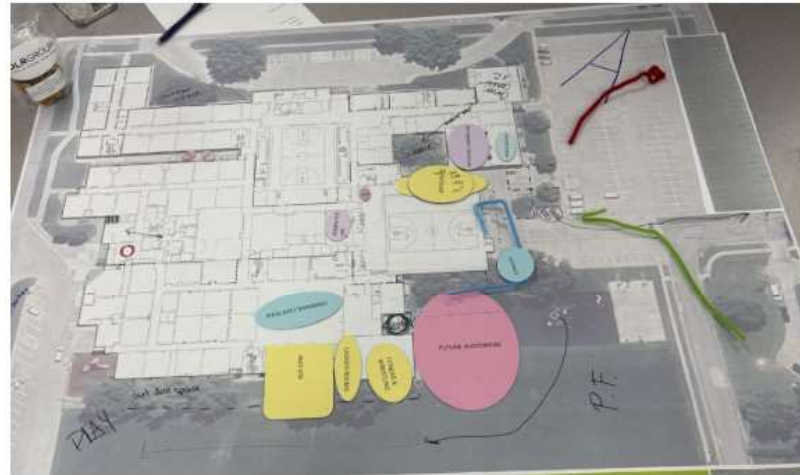
MACRO ORGANIZATION

Design Your Dream School

The Arlington team was supplied with the site plan as well as manipulatives labeled with all the items on the priority list. They were instructed to utilize these pieces and put them on the site where they thought they should be and to make sure to include adjacencies as well as any notes. At the conclusion each group presented to the entire committee and addressed any questions. Each committee member was asked to identify items they liked and did not with each plan and to pick their 2 favorite options

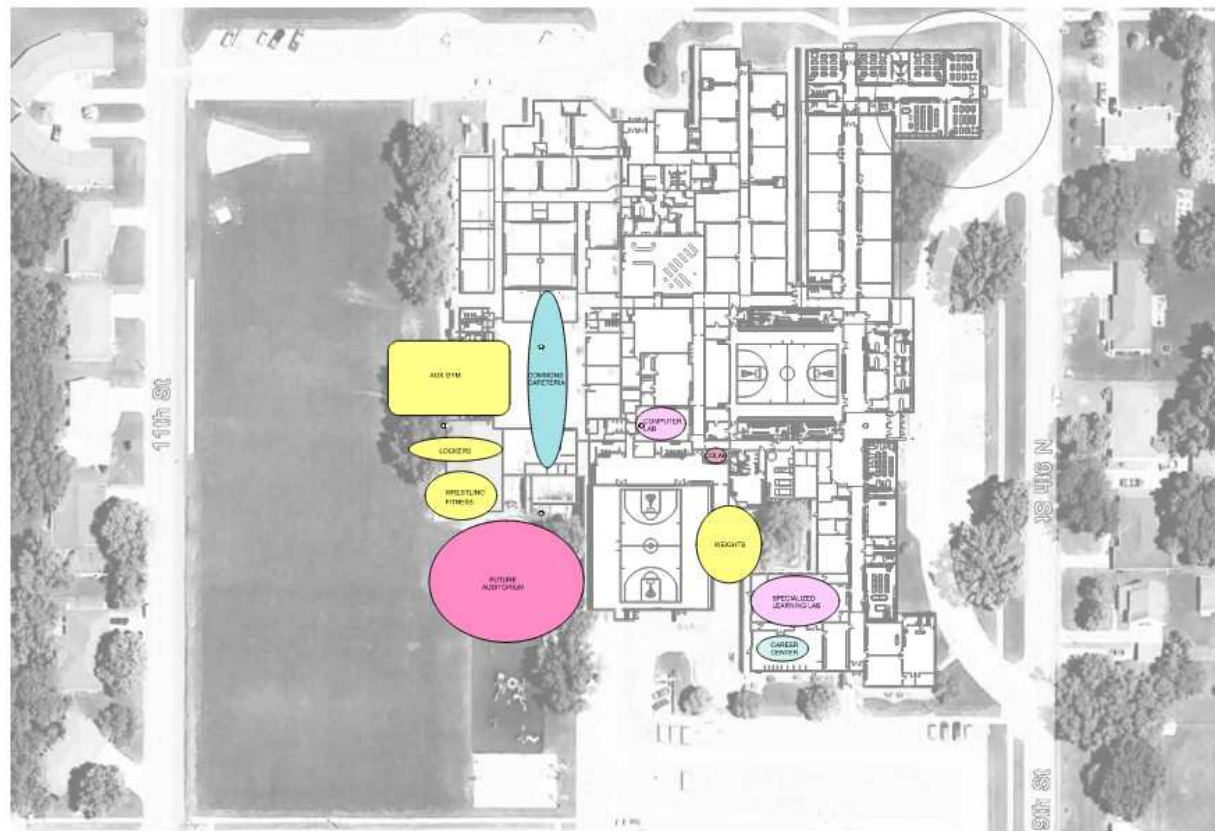


MACRO ORGANIZATION



Option A Synthesis

- Option A received positive feedback related to traffic flow, athletics, and CTE improvements, but generated significant concern around moving science rooms.

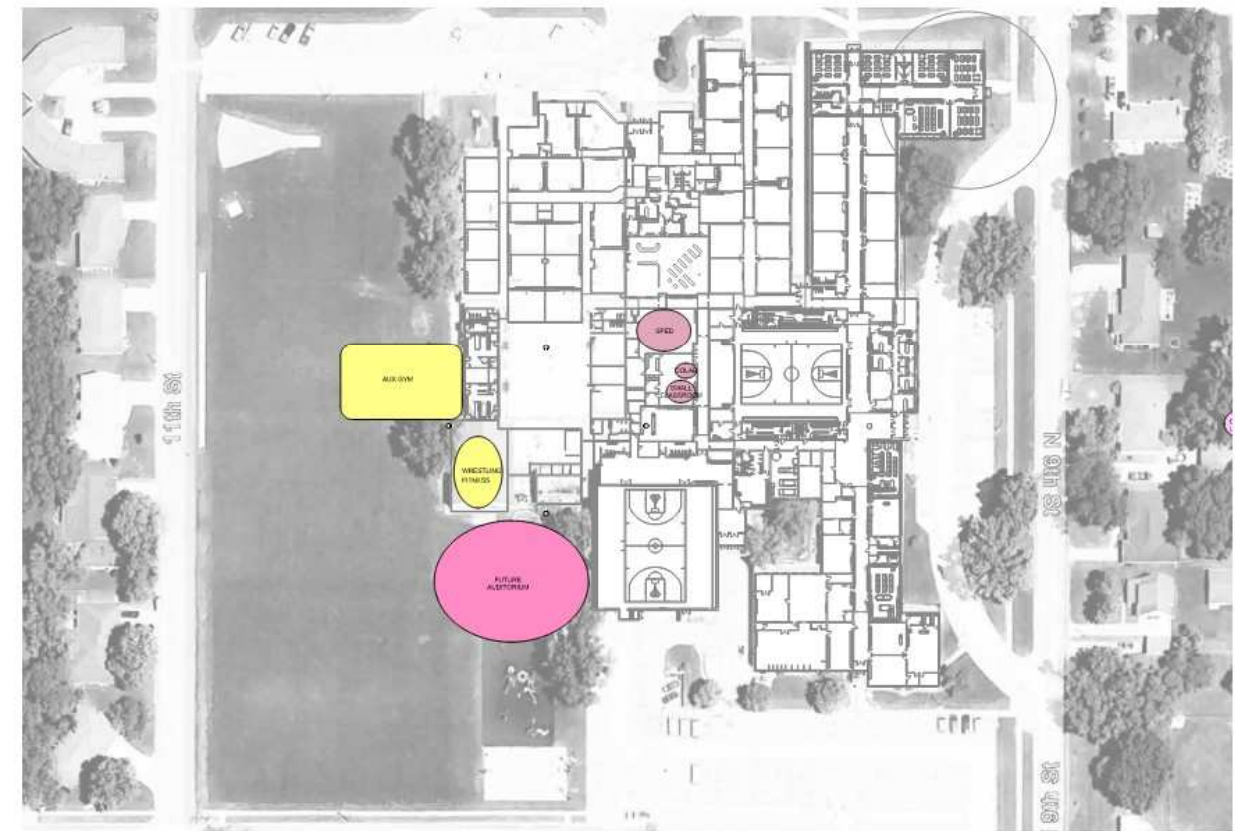


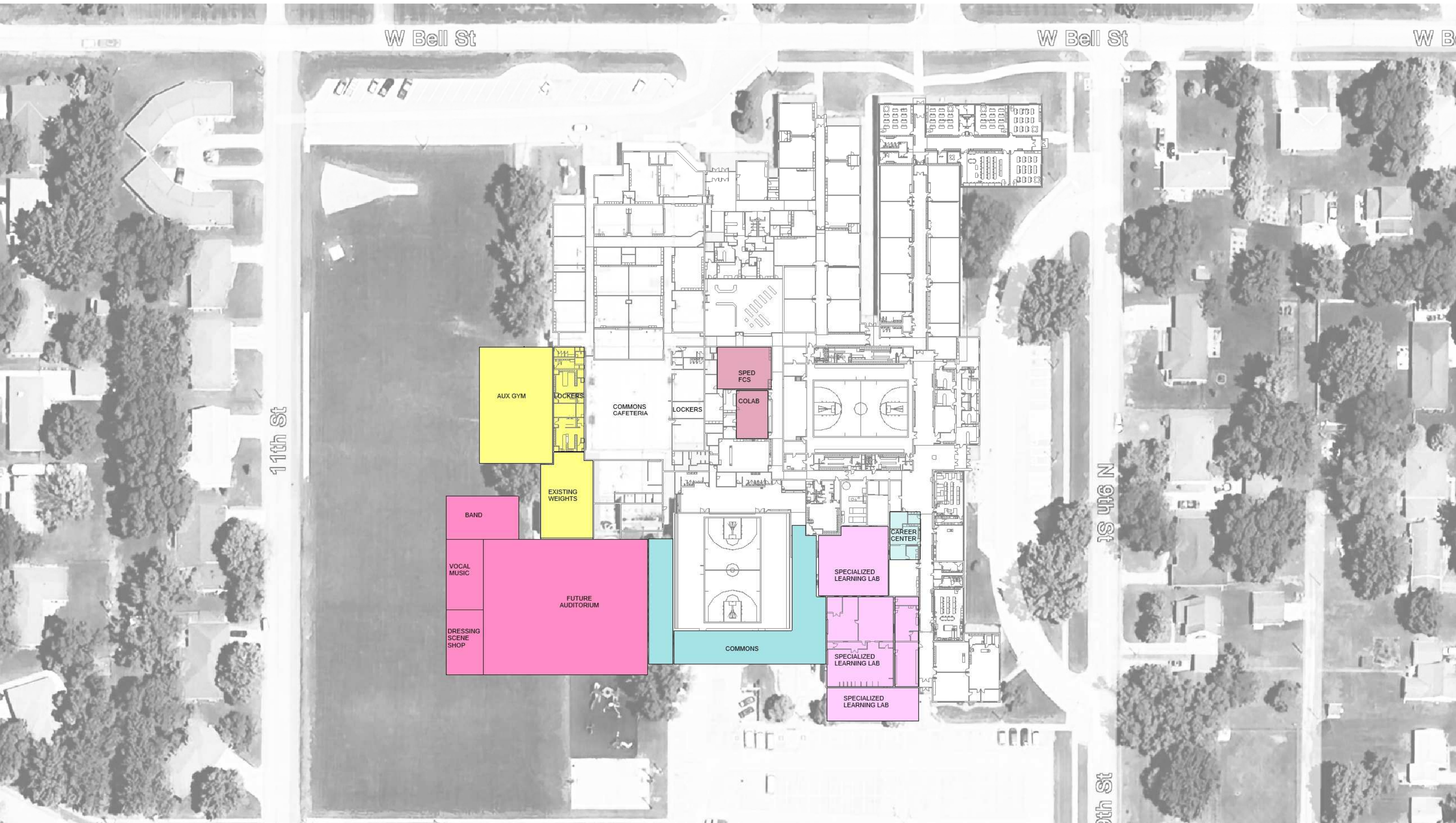
MACRO ORGANIZATION



Option B Synthesis

- Option B emerged as the strongest choice, primarily due to its improved auditorium placement, expanded parking, and effective reuse of space.





W Bell St

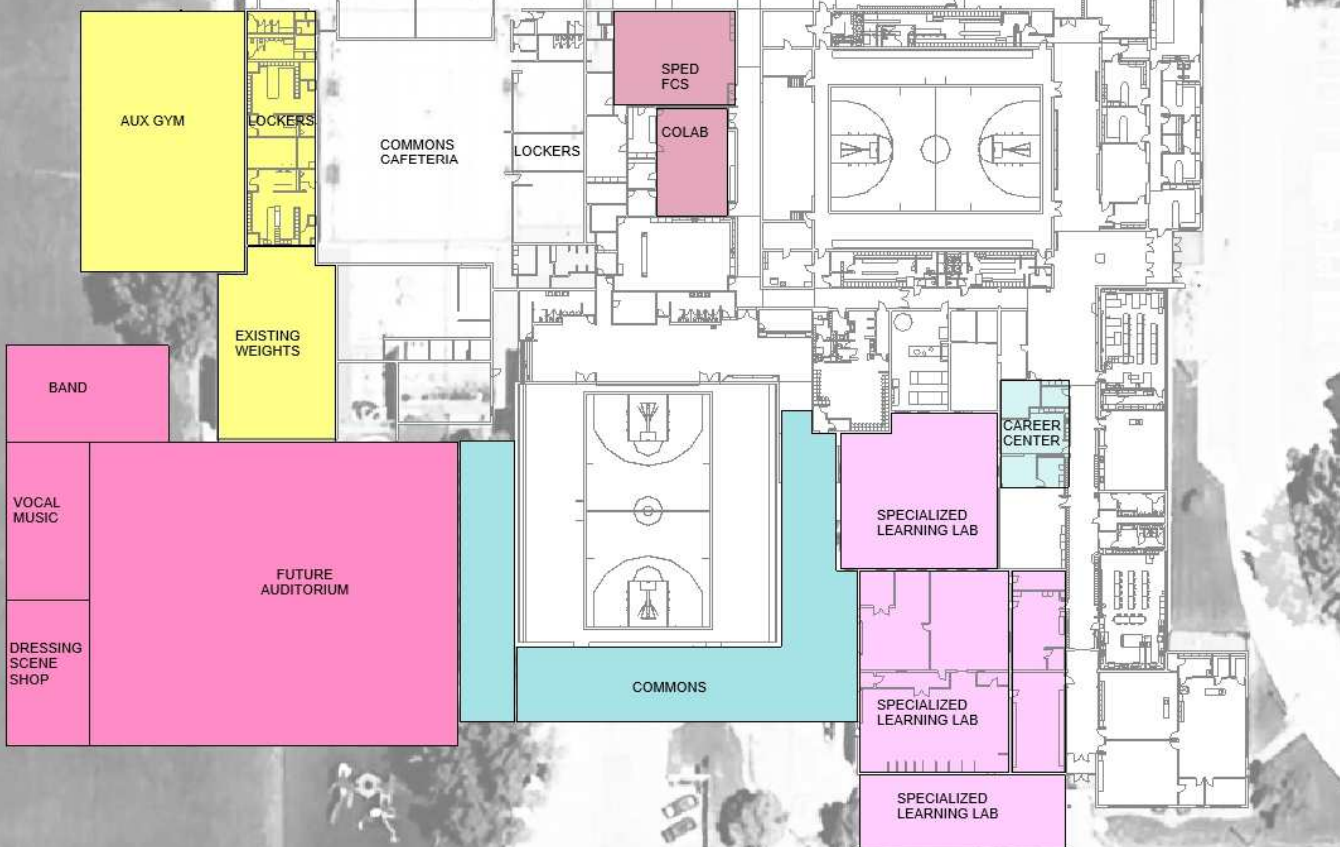
W Bell St

W B

11th St

N 9th St

11th St



AUX GYM

LOCKERS

COMMONS CAFETERIA

LOCKERS

SPED FCS

COLAB

BAND

VOCAL MUSIC

DRESSING SCENE SHOP

FUTURE AUDITORIUM

COMMONS

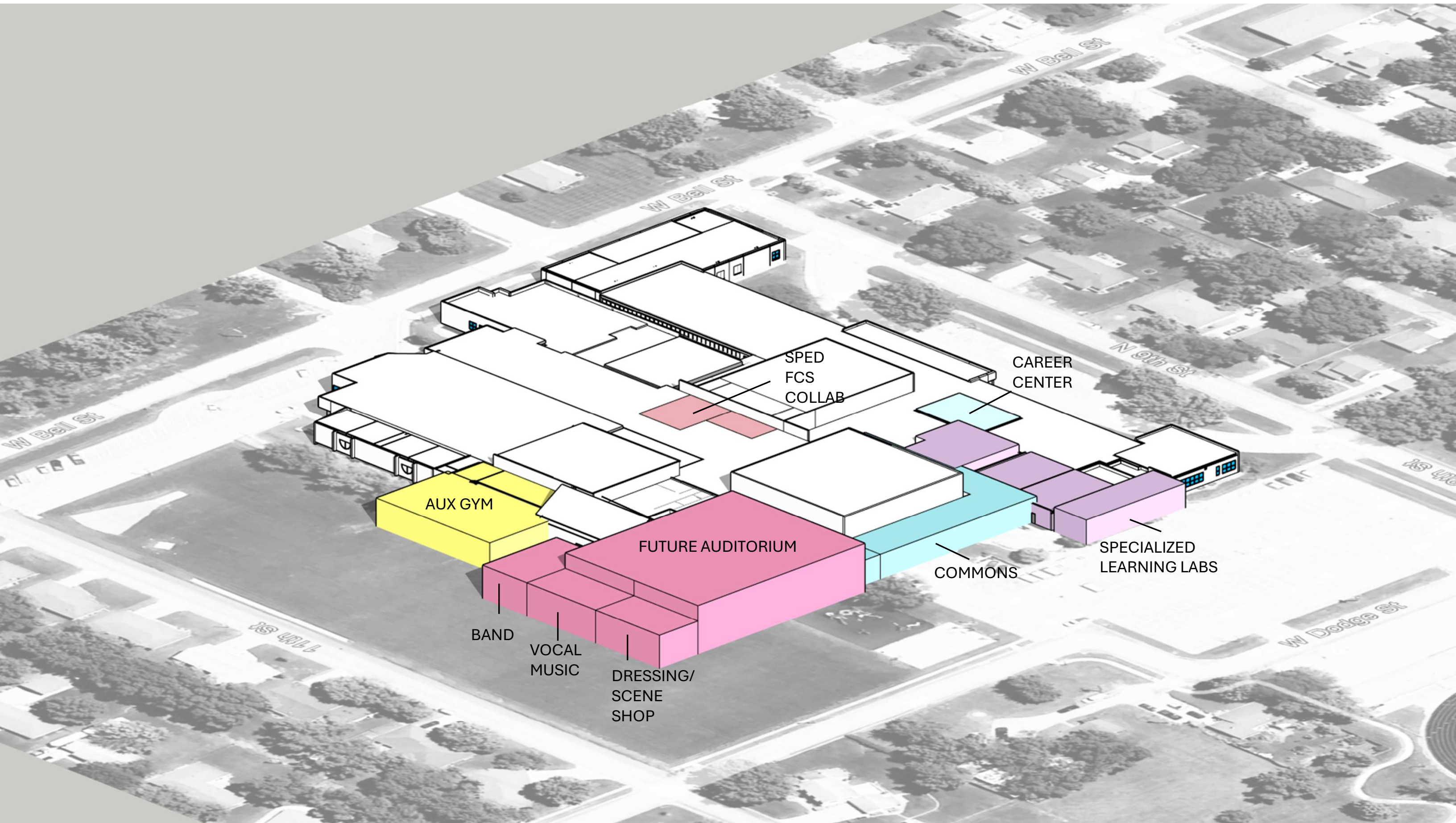
EXISTING WEIGHTS

SPECIALIZED LEARNING LAB

CAREER CENTER

SPECIALIZED LEARNING LAB

SPECIALIZED LEARNING LAB



Project A

Expanded Academic pathways (New Addition 5800 SF)

New Construction Lab

New Manufacturing Lab

Finishing Room

Tool Storage

Locker Room/Changing Rooms

Reno 6700 SF existing space including classroom and industrial tech

Flexible Learning and Colab space (3000 SF renovation)

Activities Entry & Expanded Commons (5500 SF new Addition)

Total Renovation and New Additions = 21,000 SF

Total project cost = \$9,528,888 (construction cost \$7,025,000)

Project B

Parking and Site Circulation TBD

Expanded athletic space (New Addition 6925 SF)

Wrestling room (3 mats)

Classroom/Team meeting room

Training Room

Storage

Locker Rooms (renovations)

Previous Cost of Locker Alt 2021 \$825,000 (\$1,600,000 today)

Total Renovations and New Additions = 14,925 S.F.

Total Project Cost = \$5,741,539 (construction cost \$4,282,600)

Alternates:

Alternate pricing will be added or deducted to the total GMP price if accepted.

- CC-1 – ADD \$105,000
 - Remove and replace existing corridor lockers with new lockers and install corridor lockers in the addition corridors.
 - **ACCEPT or REJECT**
- CC-2 – ADD \$280,000
 - Complete renovation of the blue gym locker rooms/restroom as designed.
 - **ACCEPT or REJECT**
- CC-3 – ADD \$210,000
 - Complete renovation of existing area B north locker room as designed.
 - **ACCEPT or REJECT**
- CC-4 – ADD \$230,000
 - Complete Renovation of existing area B south locker room as designed.
 - **ACCEPT or REJECT**

Project C

Fine and Performing Arts expansion New Addition (25,500 SF)

Lobby/Pre-Function

600 Seat House

40' Deep Stage

Dressing Rooms

Scene Shop

Storage

Band/music relocation

Special Ed and Resource (renovations) moved to band rooms 5000 SF

Total Renovations and New Additions = 14,925 S.F.

Total Project Cost = \$20,170,592 (construction cost \$15,586,000)



11th St

N 9th St

N 9th St

AUX GYM

LOCKERS

EXISTING WEIGHTS

COMMONS CAFETERIA

LOCKERS

SPECIALIZED LEARNING LAB

COMMONS

BAND

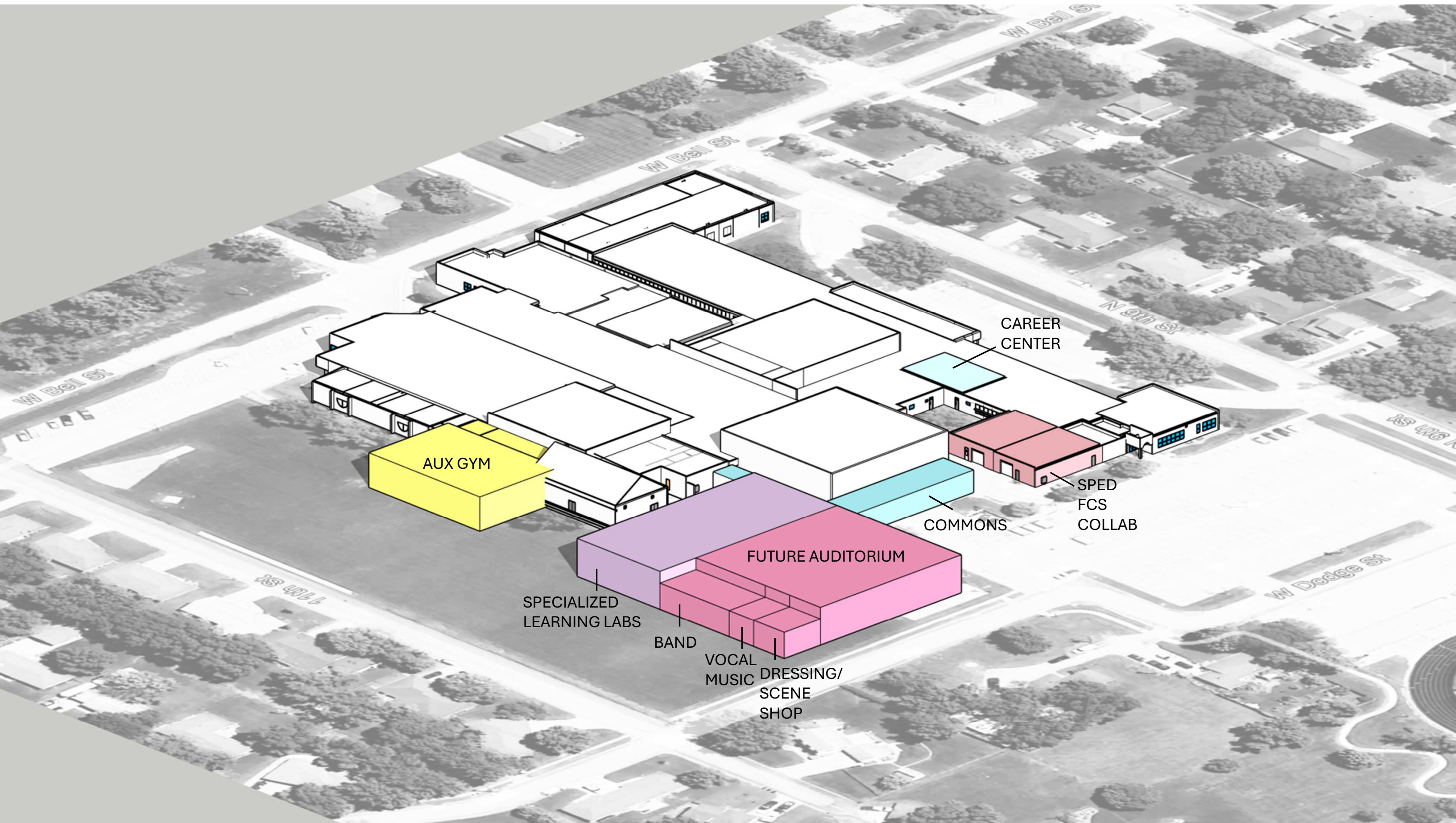
VOCAL MUSIC

DRESSING SCENE SHOP

FUTURE AUDITORIUM

SPED FCS COLAB

CAREER CENTER



AUX GYM

CAREER CENTER

SPED FCS COLLAB

COMMONS

FUTURE AUDITORIUM

SPECIALIZED LEARNING LABS

BAND

VOCAL MUSIC

DRESSING/SCENE SHOP

W Dodge St

W Bell St

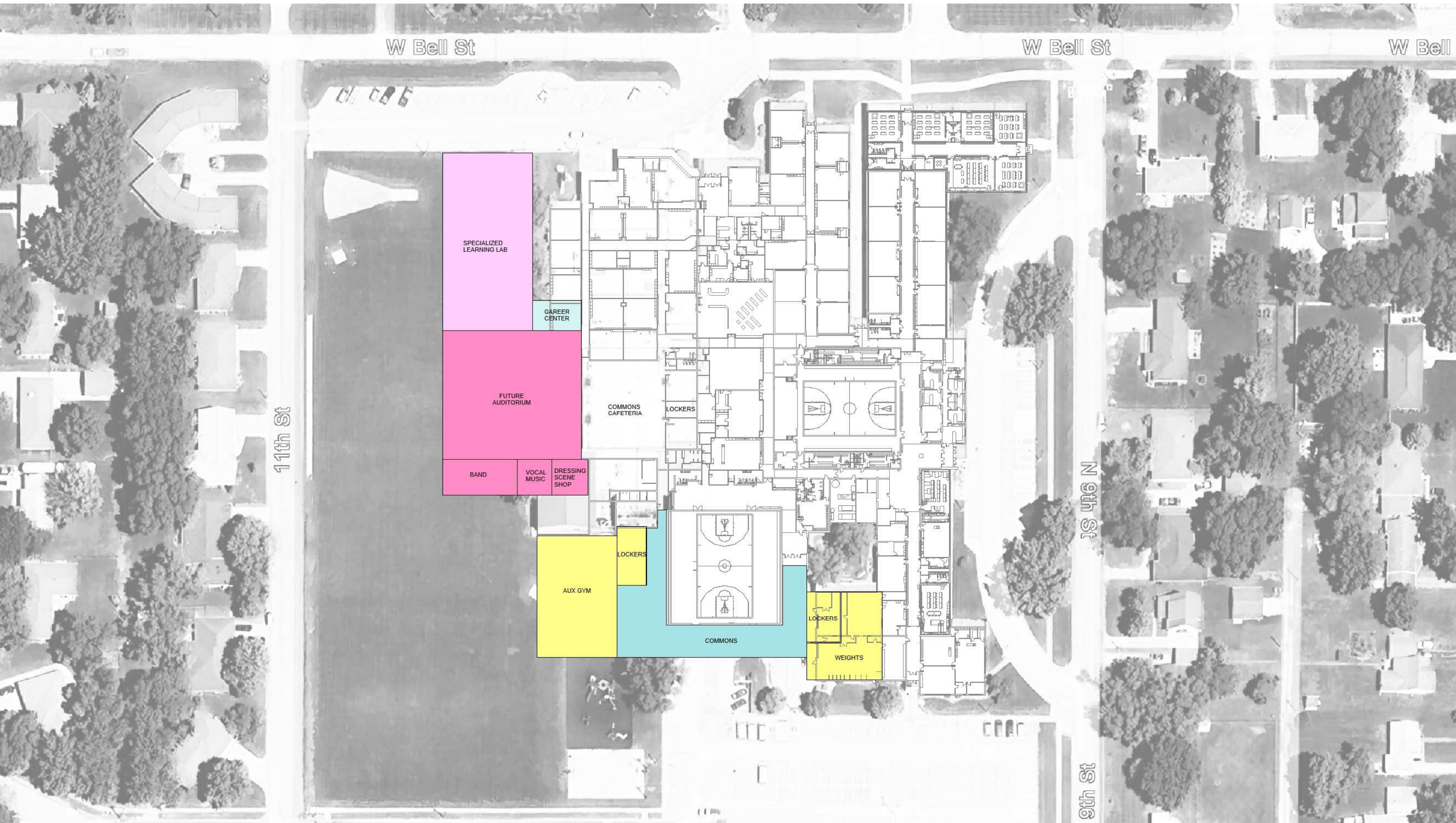
W Bell St

W Bell St

15th St

16th St

15th St



W Bell St

W Bell St

W Bell

11th St

SPECIALIZED LEARNING LAB

CAREER CENTER

FUTURE AUDITORIUM

COMMONS CAFETERIA

LOCKERS

BAND

VOCAL MUSIC

DRESSING SCENE SHOP

AUX GYM

LOCKERS

COMMONS

LOCKERS

WEIGHTS

N 9th St

9th St



SPECIALIZED
LEARNING LABS

FUTURE AUDITORIUM

CAREER
CENTER

AUX GYM

COMMONS

WEIGHTS

Community Open House Discussion January 28th



ARLINGTON
PUBLIC SCHOOLS



Visioning Workshop
January 12, 2026

Recap





WELCOME

Workshops

Why Change?

Understanding School Design

Learning Connections

Priorities Activity

Pictures Worth a 1000 Words

I See | We See

A Day in the Life Activity

Visual Listening

Design Your Dream school



WE SEE

We See Statement

We see Arlington Public Schools with modern facilities that stay true to our **rural roots** – an inviting, **community-centered** place where students feel **valued**, build **real-world** skills and grow with **confidence** in a functional, inspiring space.



GUIDING PRINCIPALS



Welcoming and Inclusive:

Create environments where every person feels safe, valued, and invited.



Foster Experiential Learning:

Design for curiosity, creativity, and hands-on, real-world engagement.



Support Well-Being and Nature Connection:

Promote health, calm, and whole-person development through nature-rich, wellness-centered design.



Design with Purpose and Future Vision:

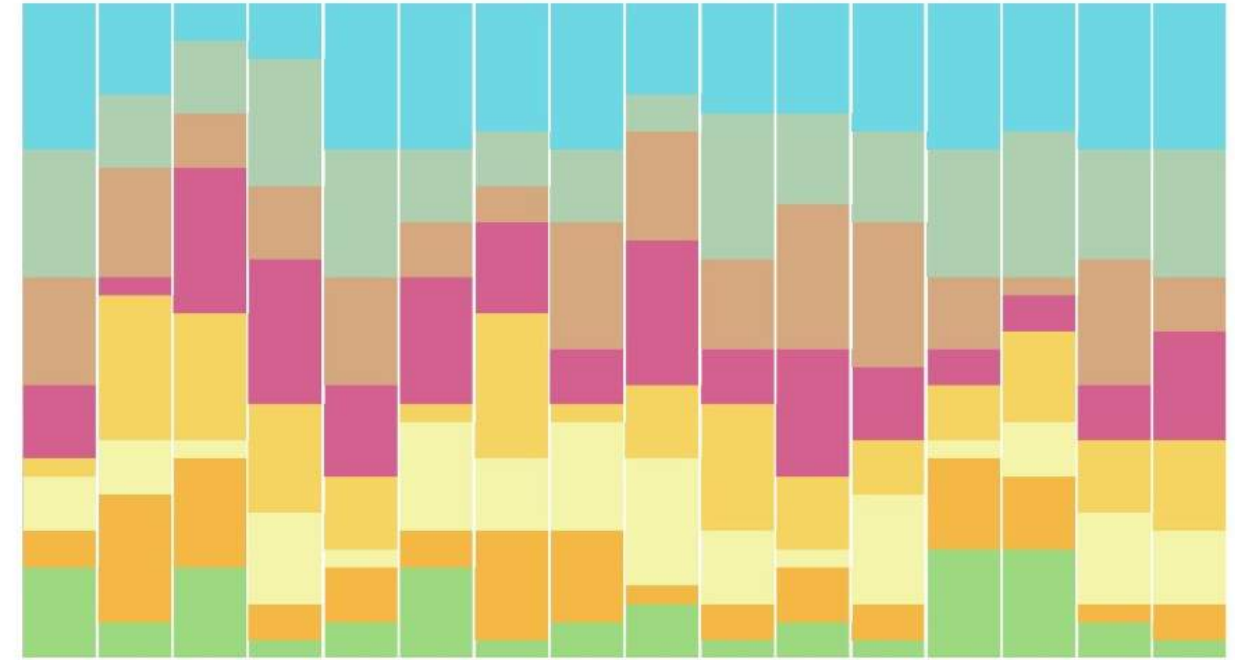
Build functional, timeless spaces that are adaptable, innovative, and grounded in community heritage.

VISION

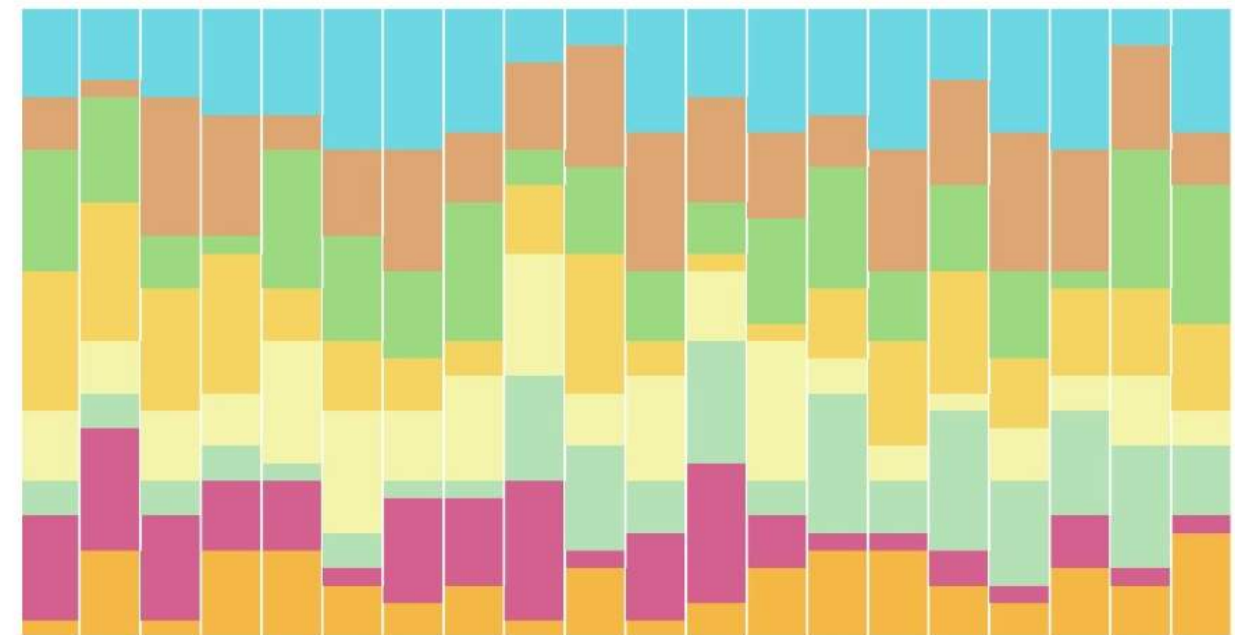
Participant Priorities

Arlington staff, faculty, parents, and community members were asked to rank their top priorities for the project's overall success to gain a further understanding of the communities needs. Nine unique priorities were provided based on information previously gathered from teacher interviews. Each participant ranked the priorities in order from high to low based on the individual's definition of success.

EXPANDED ACADEMIC PATHWAYS (CTE RENO)	ACTIVITIES ENTRY IDENTITY & EXPANDED COMMONS	FLEXIBLE LEARNING & COLLABORATION SPACE
FINE & PERFORMING ARTS EXPANSION	EXPANDED ATHLETIC SPACE (WRESTLING ROOM)	SPECIAL EDUCATION & RESOURCE SPACE
LOCKER ROOMS & RESTROOMS	PARKING AND SITE CIRCULATION	OTHER (WRITE IN)



Priority rankings following the first workshop with the community. Expanded academic pathways, activities entry identity, and flexible learning space ranked as the top three priorities.

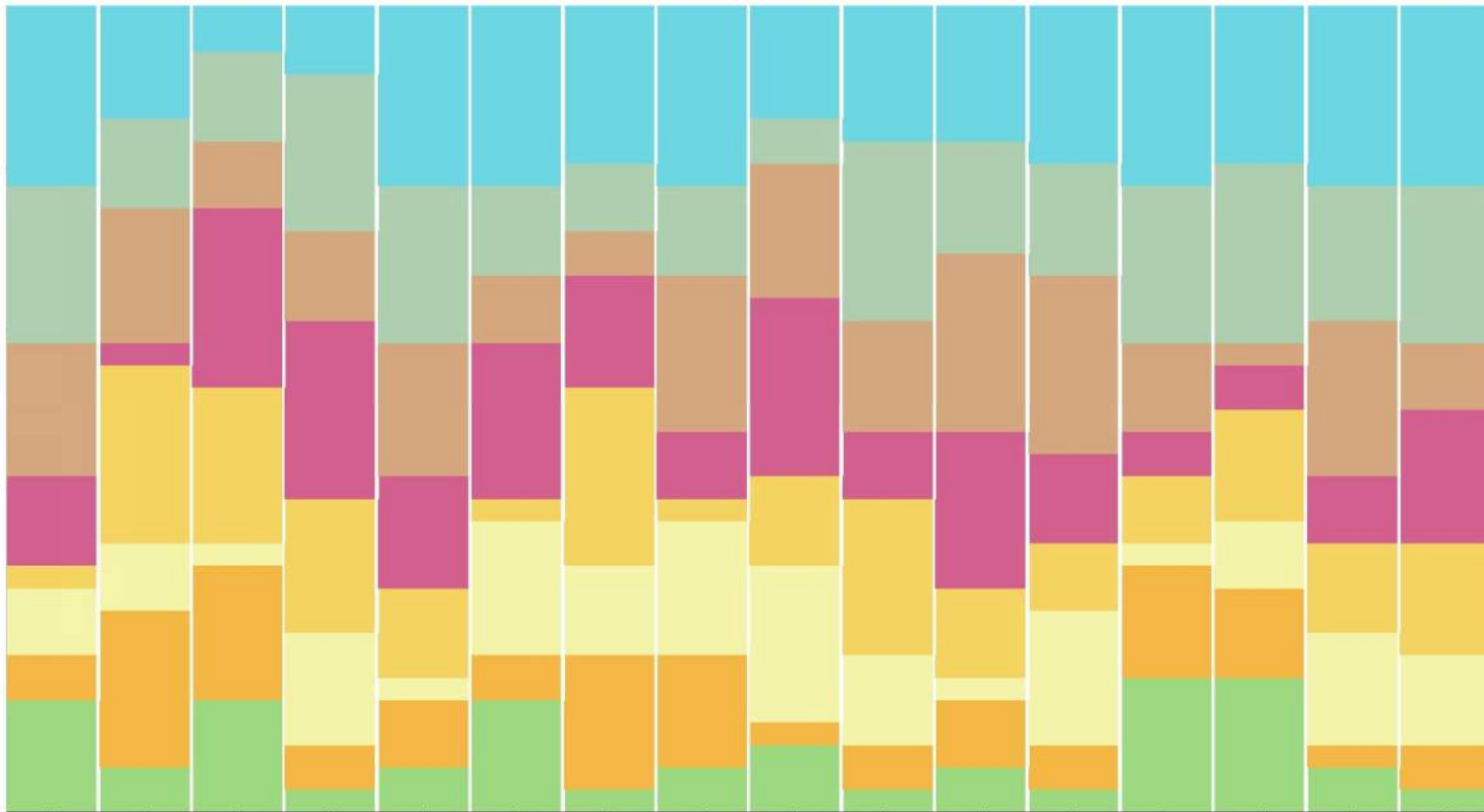


Priority rankings from students, parents, and teachers following parent-teacher conferences. Expanded academic pathways and flexible learning and collaboration space remained in the top three priorities with the addition of parking and site circulation

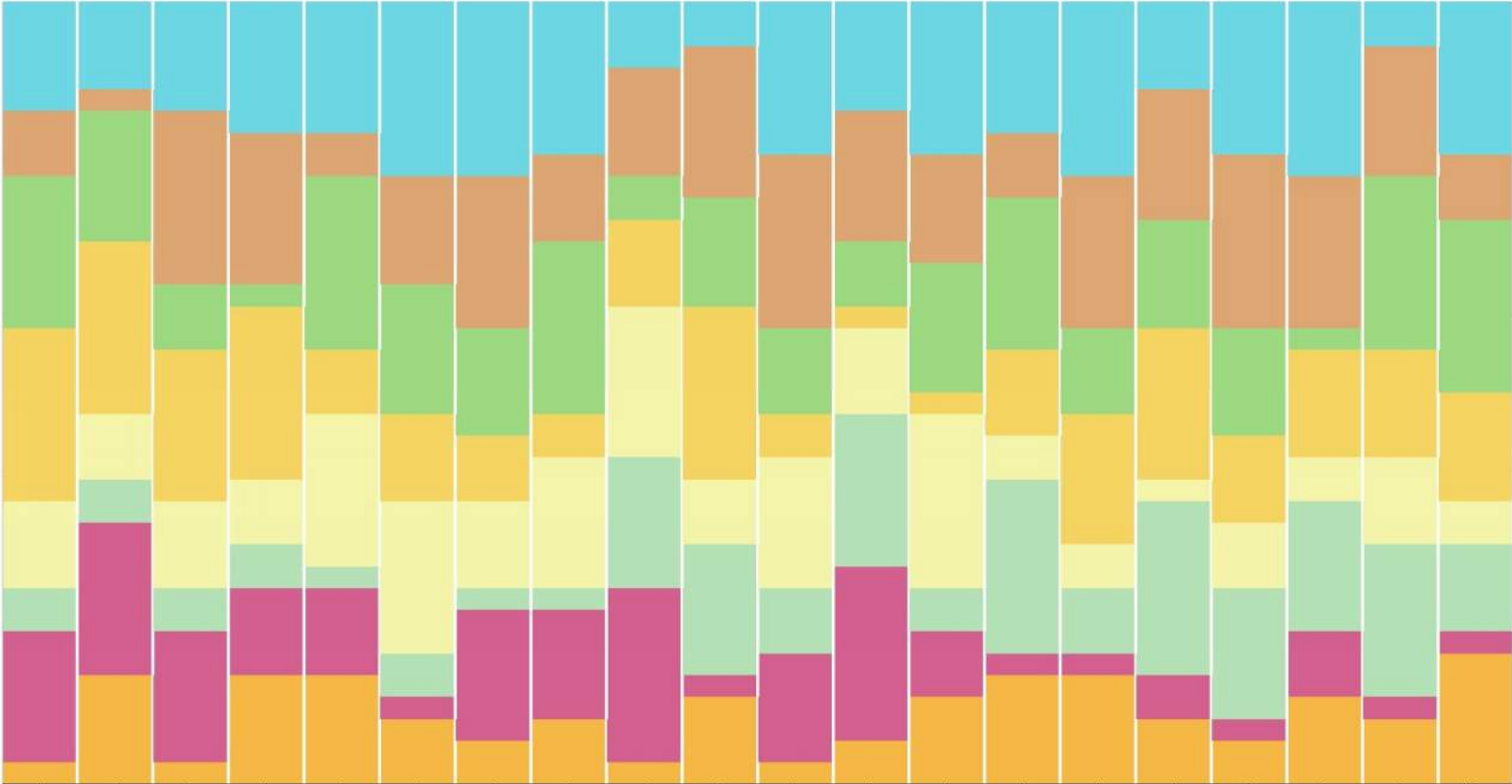
Recap



WORKSHOP PRIORITY RESULTS



PARENT-TEACHER CONFERENCE PRIORITY RESULTS



- Expanded Academic Pathways (CTE Reno)
- Activities Entry Identity & Expanded Commons
- Flexible Learning & Collaboration Space
- Fine & Performing Arts Expansion
- Expanded Athletic Space (Wrestling Room etc.)
- Special Education & Resource Space
- Locker Rooms & Restrooms
- Parking & Site Circulation

Recap | Learning Connections

SPACES FOR CREATIVE WORK

LARGE GROUP SPACES

DIFFERENTIATED TEACHING

VISIBLE LEARNING

TEACHING THROUGH INSTRUCTIONAL TECHNOLOGY

FURNITURE THAT SUPPORTS INDIVIDUALS

OUTDOOR SPACES

PRESENTATION SPACES

AUTHENTIC/REAL WORLD LEARNING

FLEXIBLE TECHNOLOGY

INQUIRY BASED TEACHING

ERGONOMIC FURNITURE

CONNECTIONS TO NATURE

OPTIONAL PRIVACY

HEALTH AND WELLNESS

WORKSHOP MODEL TEACHING

SPACES THAT ALLOW MOVEMENT

PERSONALIZED LEARNING

FLEXIBLE FURNITURE TYPES

Design Your Dream School



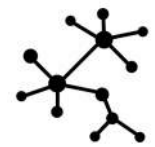
DREAM SCHOOL



FRONT DOOR



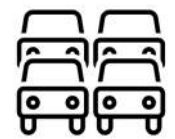
OUTDOOR LEARNING ENVIRONMENTS



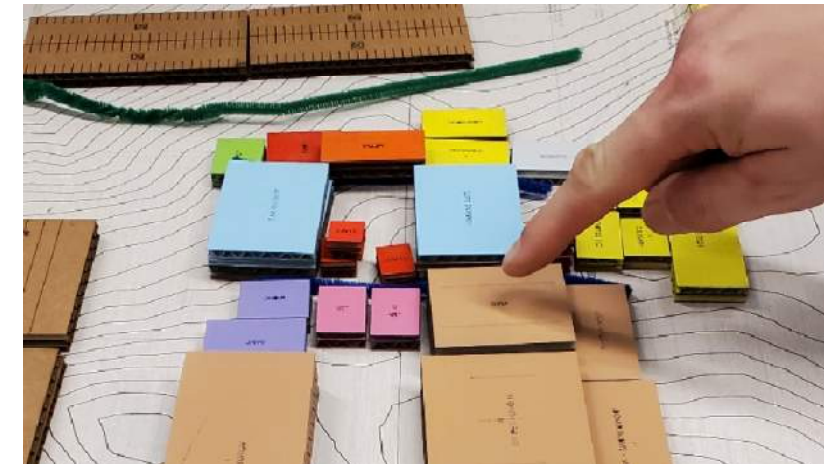
BUILDING ADJACENCIES



OUTDOOR PLAY / ACTIVITY



TRAFFIC FLOW – BUS, CAR, PEDESTRIAN



DREAM SCHOOL



CRITICAL DESIGN ELEMENTS



SPECIFIC FACILITY NEEDS



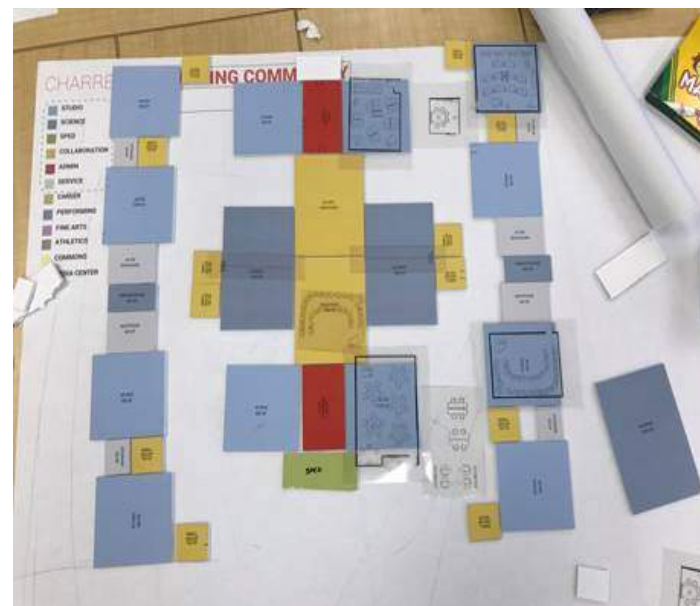
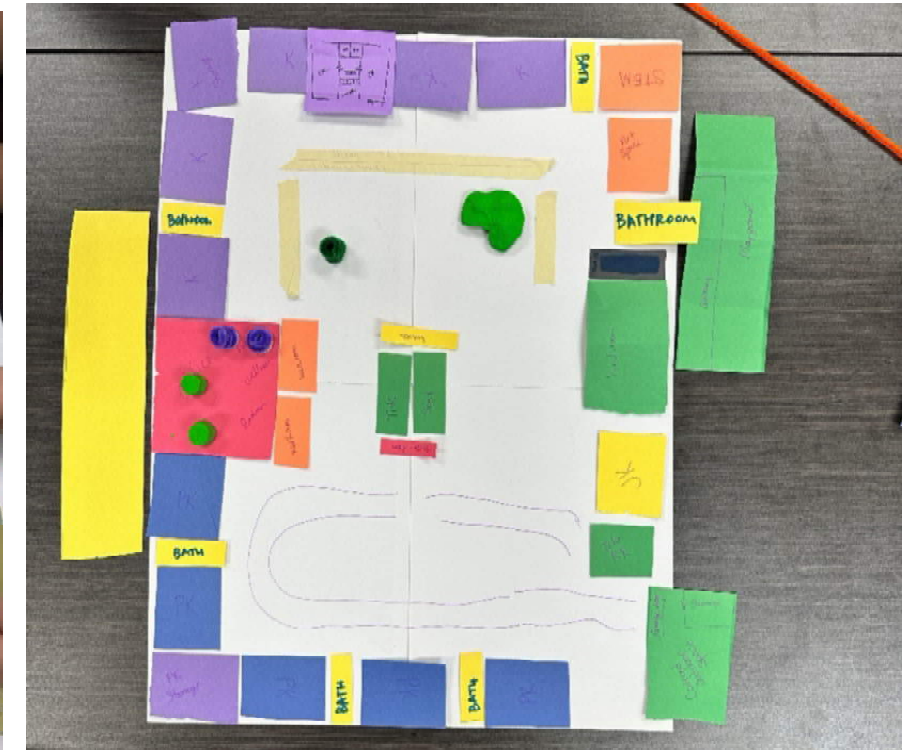
UNIQUE OPPORTUNITIES

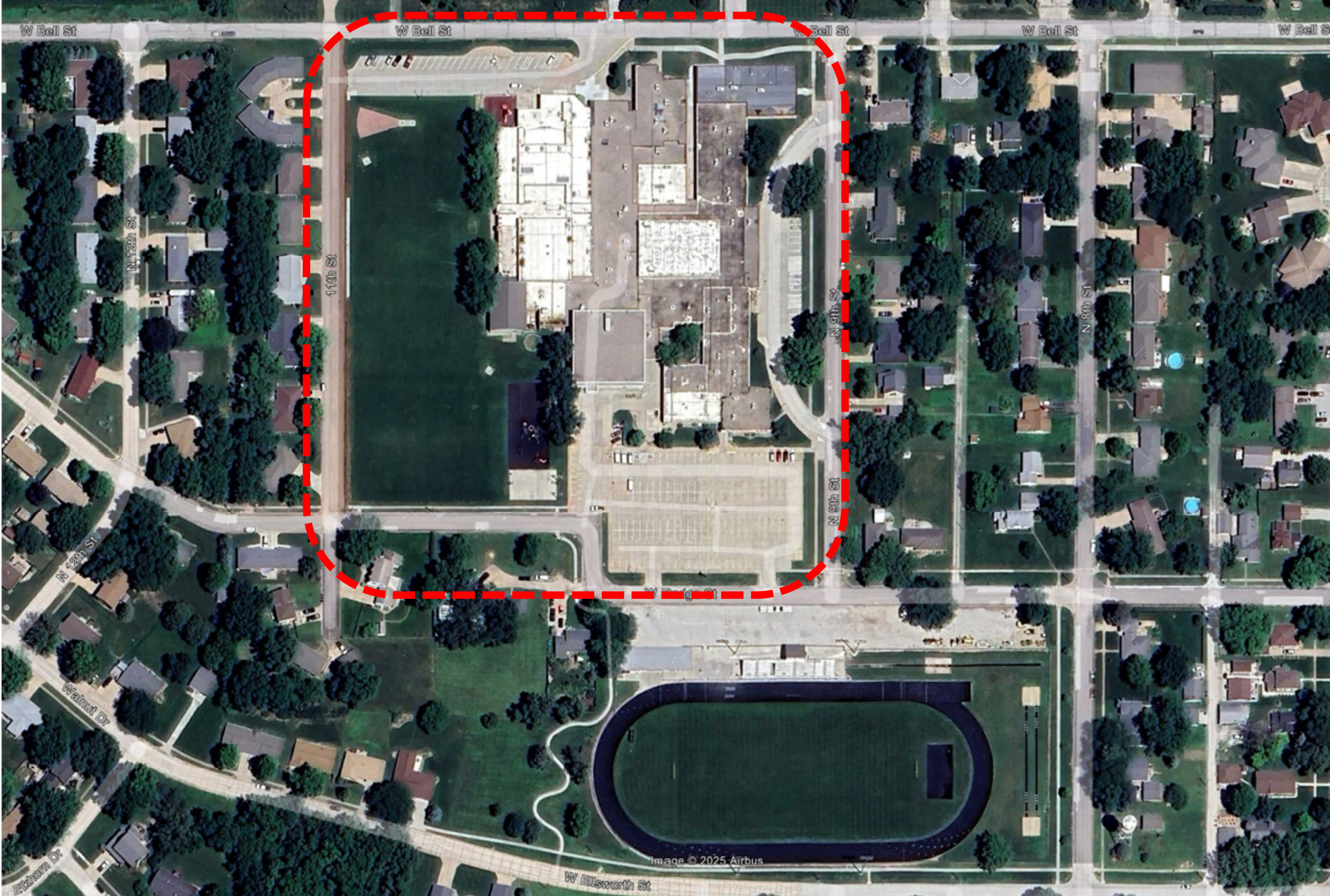


STUDENT AND STAFF NEEDS



IMPORTANT ADJACENCIES



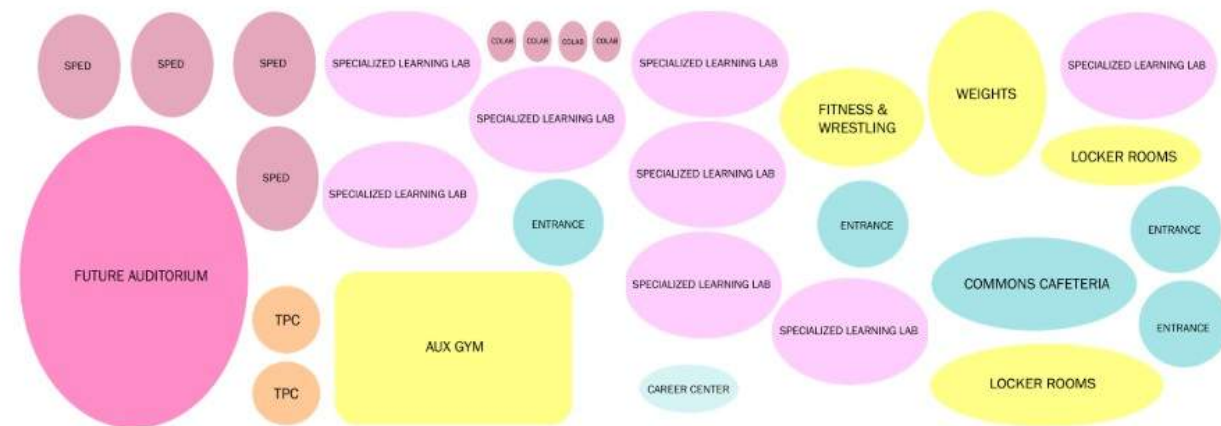


MACRO ORGANIZATION

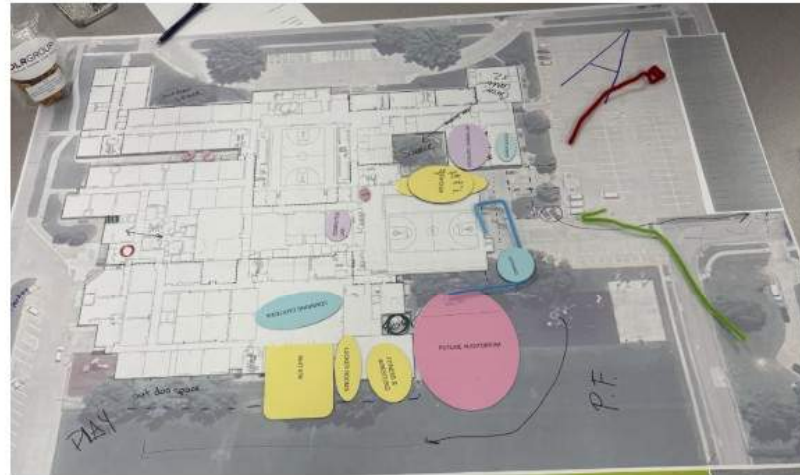
Design Your Dream School

25 years into the Future

The Arlington team was supplied with the site plan as well as manipulatives labeled with all the items on the priority list. They were instructed to utilize these pieces and put them on the site where they thought they should be and to make sure to include adjacencies as well as any notes. At the conclusion each group presented to the entire committee and addressed any questions. Each committee member was asked to identify items they liked and did not with each plan and to pick their 2 favorite options

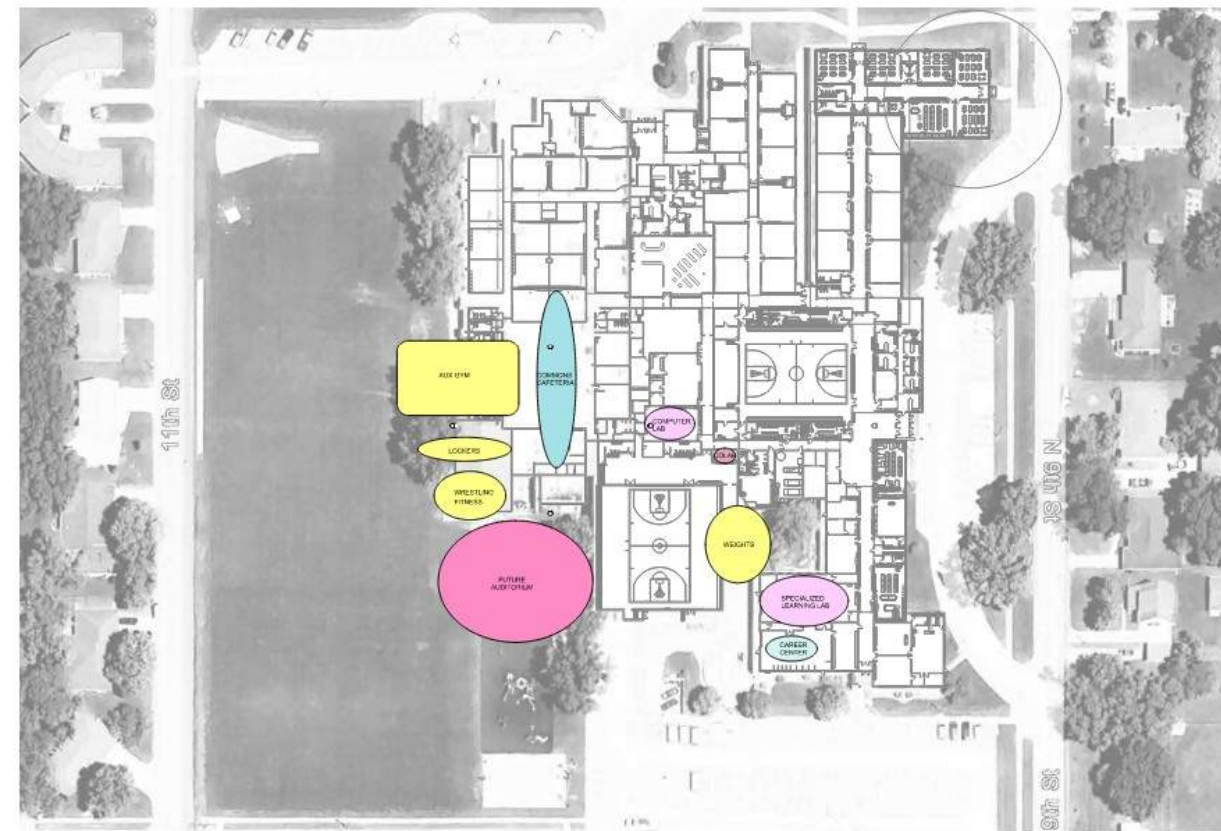


MACRO ORGANIZATION



Option A Synthesis

- Option A received positive feedback related to traffic flow, athletics, and CTE improvements, but generated significant concern around moving science rooms.

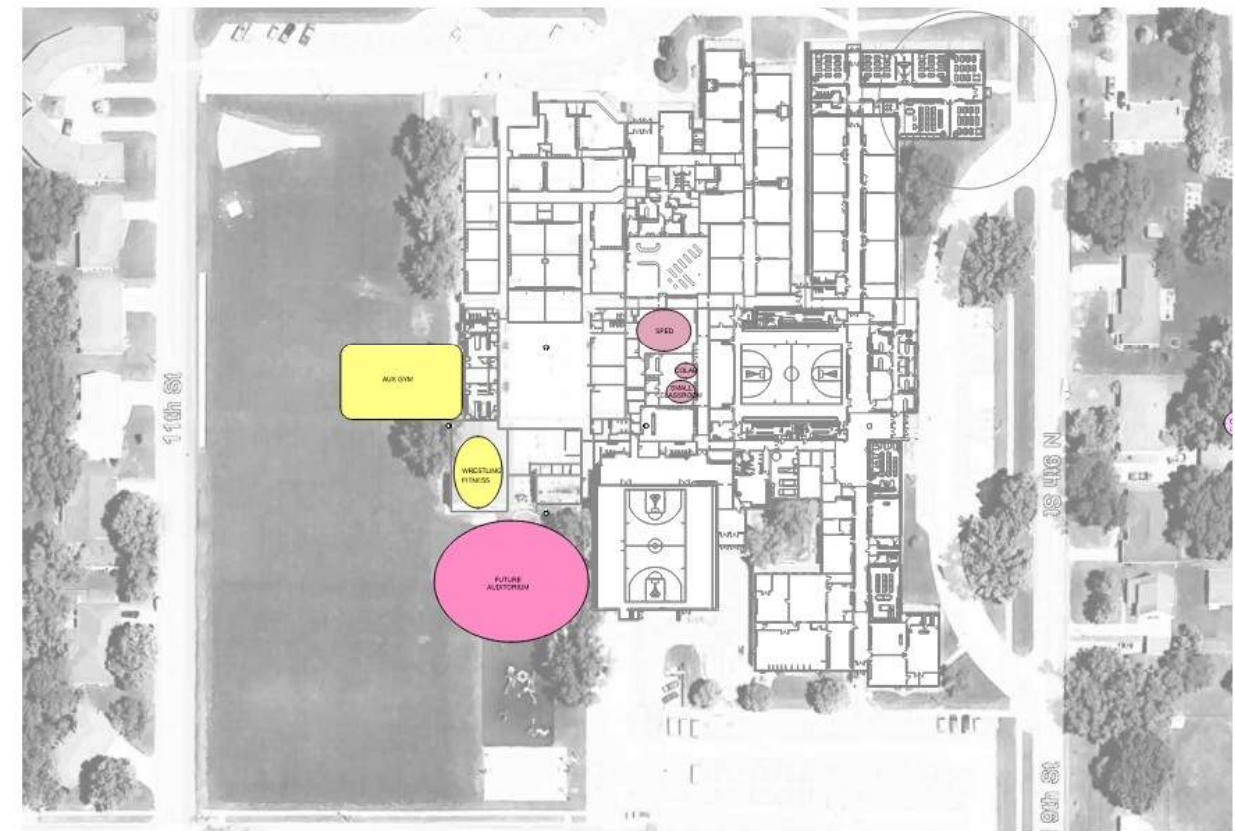


MACRO ORGANIZATION



Option B Synthesis

- Option B emerged as the strongest choice, primarily due to its improved auditorium placement, expanded parking, and effective reuse of space.



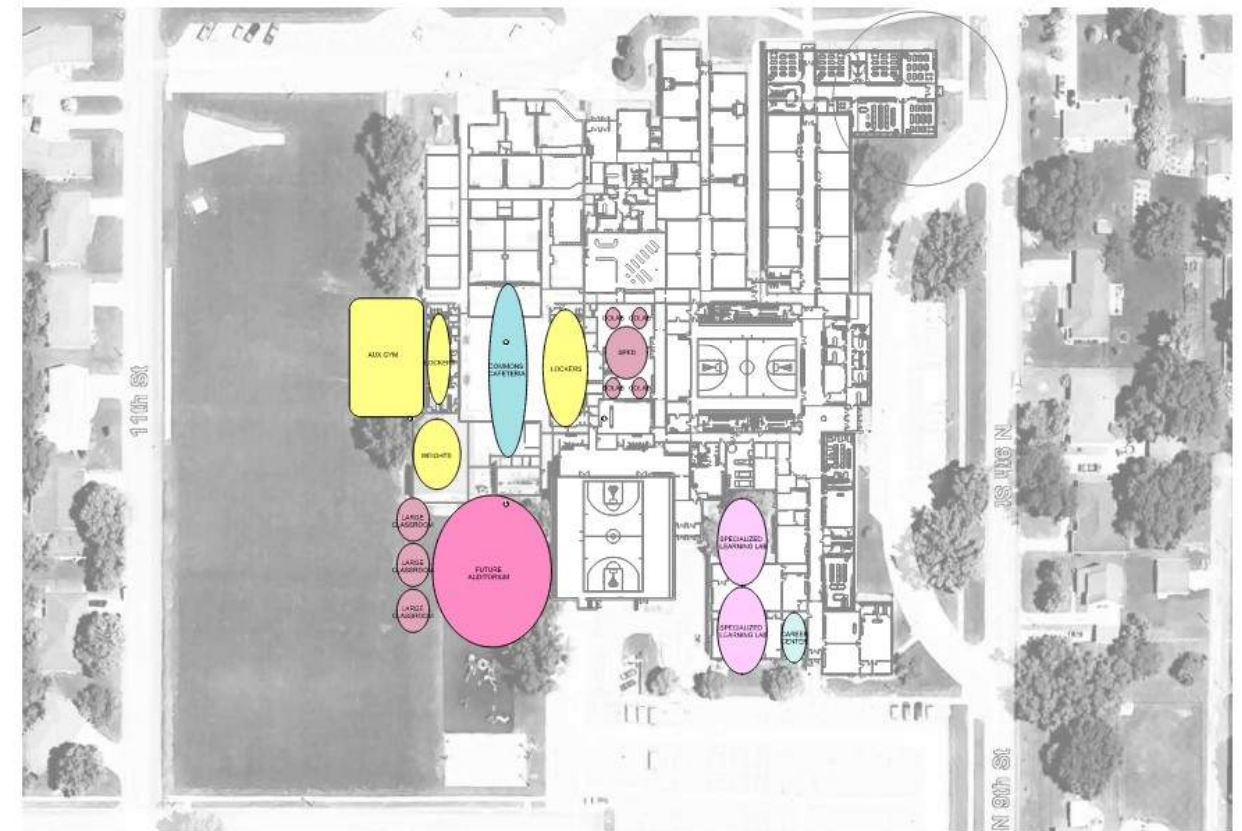
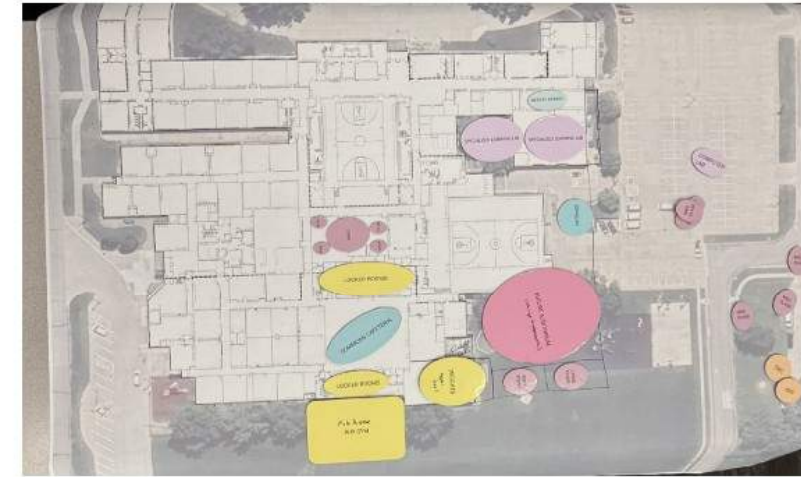
MACRO ORGANIZATION



Option C Synthesis

- Option C, while praised for its elementary classroom expansion, fitness space improvements, and Blue Gym repurposing, was consistently criticized for providing no additional parking and introducing several undesirable academic space shifts.

MACRO ORGANIZATION



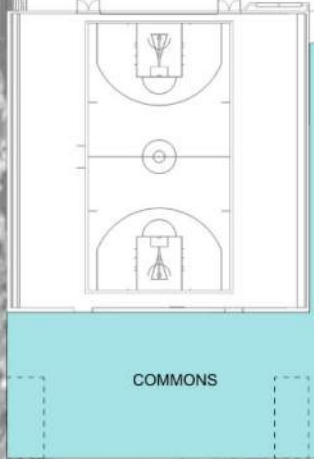


11th St

W 10th St

W 10th St

N 9th St



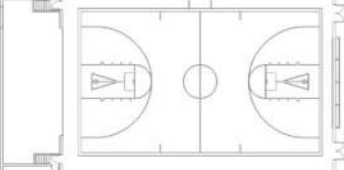
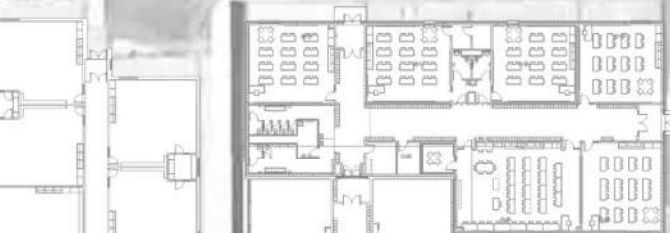
COMMONS



SPECIALIZED LEARNING LAB



SPECIALIZED LEARNING LAB



11th St

W 10th St

W 10th St

N 9th St

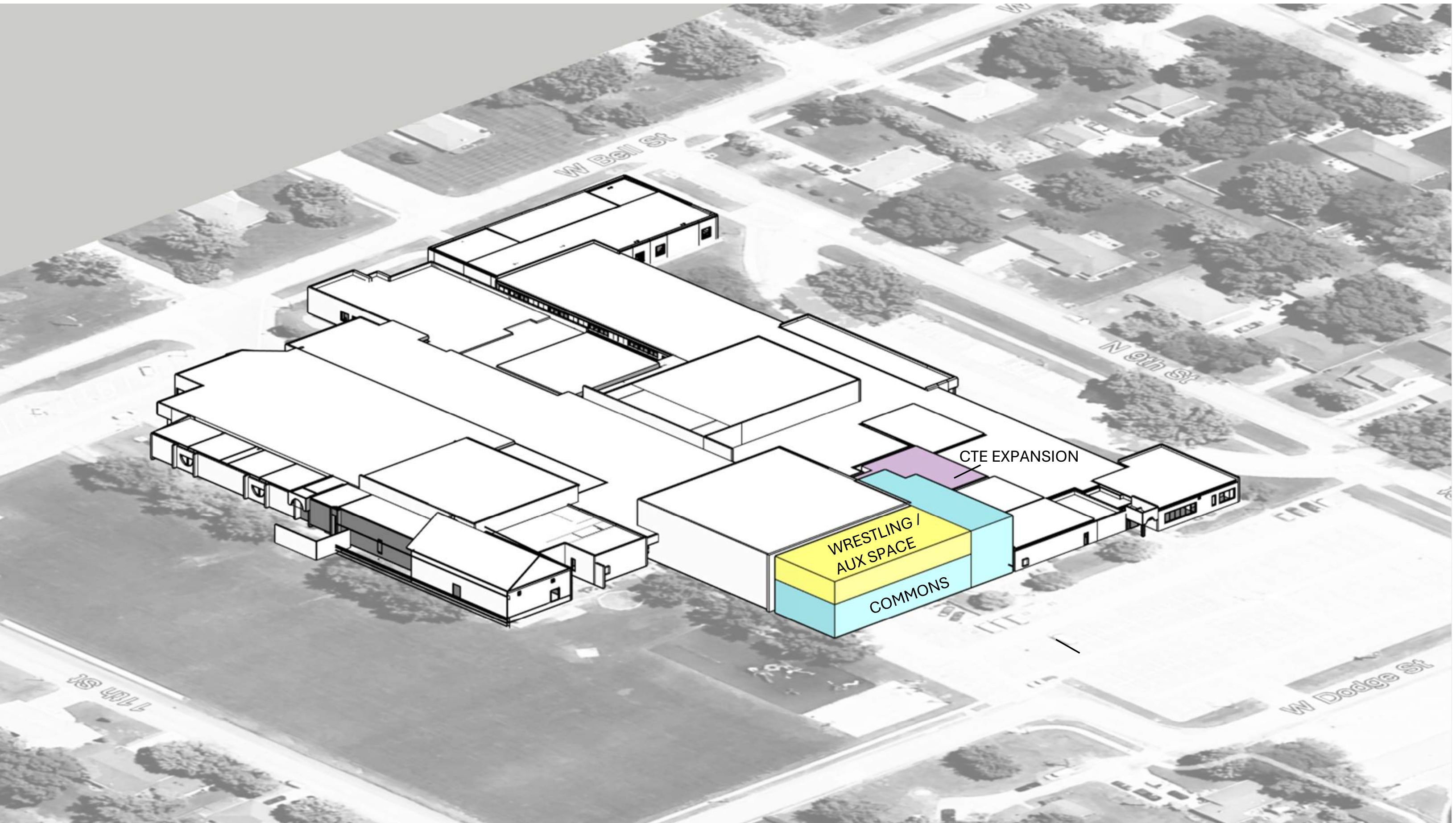


WRESTLING /
AUX SPACE

COMMONS

SPECIALIZED
LEARNING LAB

SPECIALIZED
LEARNING LAB



W Bell St

N 9th St

CTE EXPANSION

WRESTLING /
AUX SPACE

COMMONS

1st St

W Dodge St

Project Scope

Expanded Academic pathways (New Addition 3350 SF)

Construction Lab

Manufacturing Lab

Finishing Room

Tool Storage

Locker Room/Changing Rooms

Reno 6700 SF existing space including classroom and industrial tech

Activities Entry & Expanded Commons (10,000 SF new Addition)

New wrestling and activities space (5500 SF 2nd floor over Commons)

Total Renovation and New Additions = 25,350 SF

Total project cost estimate = between \$11 - \$13 Million

BEFORE YOU LEAVE PLEASE ANSWER BELOW:

3 THINGS I AM EXCITED ABOUT AFTER HEARING ABOUT THE FUTURE PLANS

2 THINGS I AM CONCERNED ABOUT WITH THIS FUTURE PLAN

ADDITIONAL QUESTIONS I HAVE



ARLINGTON PUBLIC SCHOOLS

COMMUNITY ENGAGEMENT REPORT

JANUARY 28, 2026



WHAT TOOK PLACE

Arlington Public Schools held a community meeting on January 28th in the school's "Blue Gym." After a short presentation from DLR Group regarding ideas for potential facility improvements, NASB facilitated discussion around several topic areas chosen by the Board of Education. Nearly 50 community members were in attendance, which were split into 8 different table groups for discussion.

EXECUTIVE SUMMARY

The Community Engagement report reflects strong overall pride in Arlington Public Schools and a deep sense of connection between the district, families, and broader community. Community and parent involvement emerged as the district's most frequently cited point of pride, followed by the range of classroom and extracurricular opportunities, with academic indicators such as student achievement, graduation rate, and college readiness also noted. Another was the importance of quality teachers, small class sizes, low staff turnover, and welcoming district culture that are all currently present at APS.

When considering priorities for student learning over the next five years, responses placed a clear emphasis on career readiness and workforce alignment. Growth in trade and technical education was identified as the top priority, along with increased local partnerships, expanded career exploration opportunities, and instruction in financial literacy, employability skills, and emerging technologies such as artificial intelligence. These responses suggest an expectation that the district continue balancing academic achievement with practical, real-world preparation for a variety of postsecondary pathways.

Feedback related to community partnerships and family engagement reinforced existing strengths while also identifying future opportunities. Those in attendance expressed interest in family-focused events and further engagement with community partners for experiential and career learning opportunities. Current and potential communication systems were also discussed in the absence of a town newspaper. Responses, paired with attendance at the meeting show the eagerness of families and the community to support the school through various means.

General comments to conclude the evening centered around parking, accessibility, building appearance, and space limitations of the wrestling room.

WHAT'S NEXT

With a strong foundation of community trust and engagement evident in the report, the Board's next role is to translate community input into clear direction, priorities, and accountability. The data does not suggest a need for course correction, but rather for intentional alignment and follow-through.

First, the Board should use the identified priorities to affirm or refine the district's strategic direction. This may include confirming that current goals sufficiently address CTE expansion, career pathways, and emerging skills such as AI, or signaling where adjustments or new priorities are warranted. The Board's role is not to design programs, but to ensure the district's long-term vision reflects community expectations.

Second, the feedback around partnerships and engagement calls for the Board to set expectations for structured, two-way communication and community involvement. This includes asking how engagement efforts are tracked, how input is used in decision-making, and how outcomes are communicated back to families. Establishing clarity around "what happens after engagement" will help sustain trust and avoid engagement fatigue.

Third, facility-related data suggest the need for continued oversight of long-range planning. While operational details rest with administration, the Board should consider how facilities, parking, accessibility, and safety align with enrollment trends and program growth. Clear timelines, transparency, and regular updates will be important to address these points.

To conclude, the Board should view this report as a baseline for future measurement. Determining how and when progress will be reviewed will help ensure that community input meaningfully informs decisions over time (*ensure to align with Strategic Plan Strategies 3.2 and 4.1*). In short, the Board's next step is to listen, align, and lead: listen to what the community values, align district priorities accordingly, and lead through clear expectations, oversight, and communication.

Identify the points of pride, accomplishment, and achievement of Arlington Public Schools.

Field	Groups Identifying (of 8 possible)	Field	Groups Identifying (of 8 possible)
Community/Parent Involvement & Support	5	College Readiness	1
Available Student Offerings	3	Community/Family Engagement Through School Events	1
Collaboration with Youth Sports	3	Continual Growth of Young Families	1
FBLA	3	District Facilities	1
Student Achievement / Test Scores	3	Encourage Involvement	1
Athletics	2	Friendly Competition	1
FFA / Ag Program	2	Graduation Rate	1
Inclusive of All Students	2	Growth in Wrestling Program	1
Quality Teachers	2	High Quantity of Scholar Athletes	1
School Communication	2	Minimal Staff Turnover	1
Strong Reputation / Appealing District	2	Partner with Surrounding Schools	1
Teacher Engagement	2	Percentage of Teachers with Masters Degree	1
Accelerated Programs	1	Skills USA	1
Art Throughout School	1	Small Class Sizes	1
Arts	1	Striv TV	1
Classrooms	1	Student Behaviors	1
Clubs	1	Up to Date Technology/Computers	1
College Going Rate	1	Variety of Pathways	1
		Welcoming	1

What key areas related to student learning should be prioritized over the next five years?

Field	Groups Identifying <i>(of 8 possible)</i>
Trade/Technical Education (CTE) Growth	7
Local Partnerships	4
Artificial Intelligence Training for Staff & Students	3
Career Exploration Info/Exposure	3
Financial Literacy	3
Foreign Language at Younger Age	2
3D Technology / Robotics	1
Appealing Facilities/Spaces	1
Community Input for Needs	1
CTE / Ag Facility Updates	1
Dual Credit	1
Employable Skills	1
Fine Arts Skills	1
Giving Back / Volunteering	1
Improved Testing Systems	1
Learning Challenges Affecting Test Motivation	1
Low Testing Scores	1
Mentoring Program	1
Proactive Planning for Growth	1
Professional Learning for Teachers	1
Roots to Wings	1
Soft Skills	1
Special Education Needs	1
Technology Skills	1
Weight Room w/ Community Access	1

How can the district strengthen community partnerships and increase family connection, communication, and involvement?

Field	Groups Identifying (of 8 possible)
Family Events (i.e., Muffins w/ Mom, Book Bingo, Literacy Game Night)	3
Filling Newspaper Void w/ Community Updates	3
Job Fair / Dream Day	3
Partnerships w/ Local Community/Businesses	3
Alumni Presenting on Experiences/Careers	2
Classroom & Extracurricular Communication	2
Annual Community Engagement	1
Collaboration with PTO and Booster Club	1
Community Access to Weight Room	1
Community Garden	1
Community Wellness Center & Library	1
Continue with Strong Sponsors	1
Digital Messaging Board by Bus Barn	1
Easy Accessibility to Information/Involvement	1
Healthy School–Community Communication Practices	1
Job Shadowing	1
PR/Media Person	1
Representation at Community Events (i.e., Summer Sizzle, Fall Festival, Arlington Community Church)	1
Shared Facility with School/Community	1
Unified Sports	1

General Comments:

- community pride (community has been great since we moved here)
- parent expertise collected so they can be contacted as an expert speaker (engaging our community)

- parking
- handicap accessible parking for activities (move the vans)
- competing schools' bus parking

- private funding for wrestling room (would the school have interest in renting/using the space)

- community engagement 3 part? where does it go from there, how do we follow up as a board?
- hard feelings both ways, wrestling room and access. wrestling room doesn't have enough room
- 45 ish wrestlers is a safety concern (plus 79 youth)

- the appearance of our building, currently externally
- is there plans now for the building?
- What can we do now?
- current parking
- school community parking

