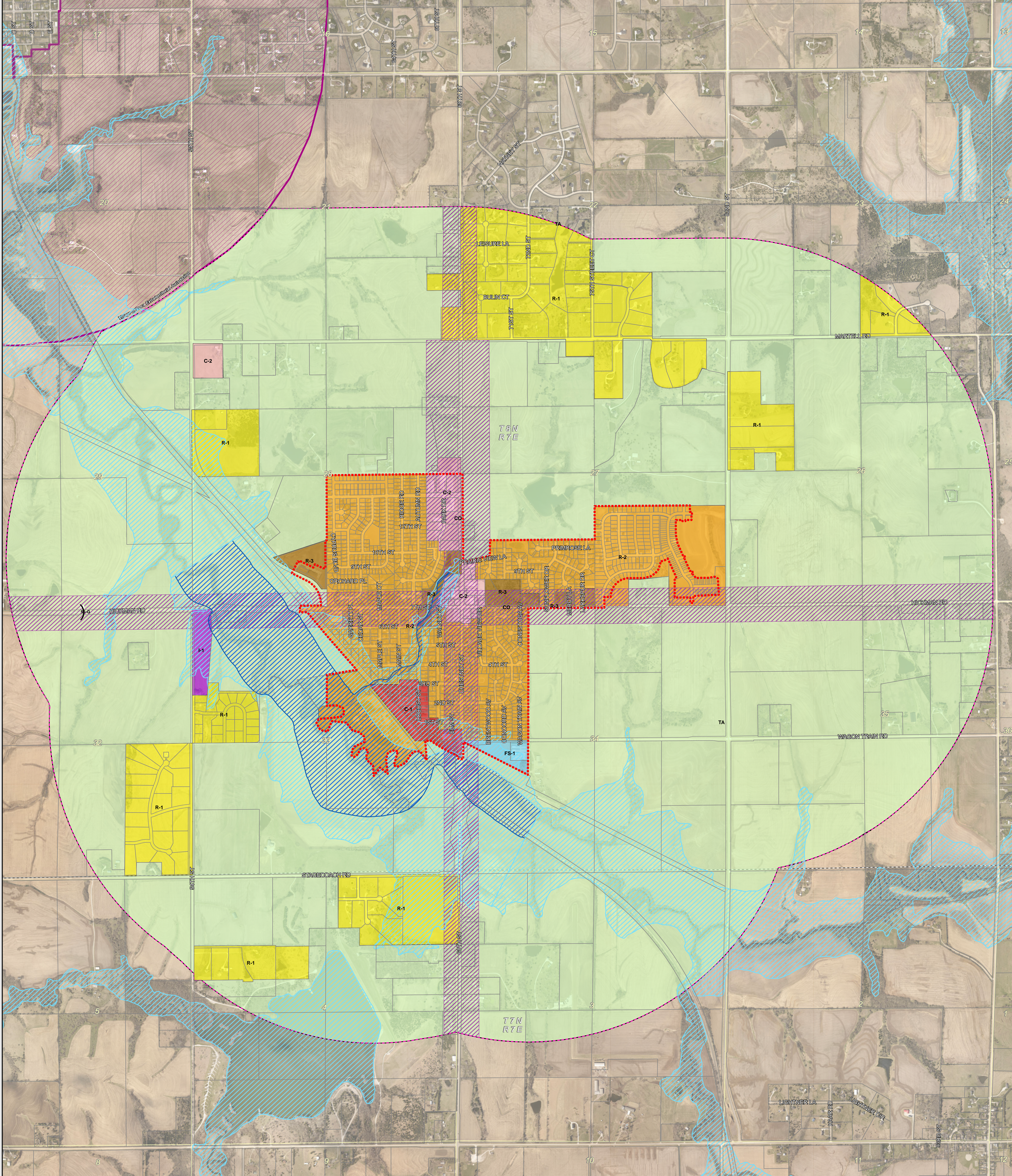


Planning Commission Special Workshop
Meeting
Thursday, June 29, 2023 6:00 PM

Hickman Community Center/City Hall 115
Locust Street, Room 128 Hickman, Nebraska

1. Call to Order
 - 1.A. Participant Sign-In Sheet Available & Disclosure of Meeting Recording Process Notice Posted.
 - 1.B. This is an Open Meeting of the Hickman Nebraska Planning Commission. The Hickman Nebraska Planning Commission abides by the Nebraska Open Meetings Act in conducting business. A copy of the Nebraska Open Meetings Act is on display in this meeting room as required by Nebraska State Law. Notice of meeting and copies of this agenda have been publically posted prior to the meeting at the Hickman City Hall, Hickman U.S. Post Office and U-Stop Market.
 - 1.C. The Hickman Nebraska Planning Commission may vote to go into Executive Closed Session on any agenda item as allowed by Nebraska State Law. The Planning Commission Members may be excused and re-enter the meeting room at any time after reconvening open session.
 - 1.D. Registered Agenda Speakers: All individuals requesting to be Registered Agenda Speakers must fill out a Registered Speaker Card & submit to Recording Clerk. The Planning Commission Chairperson or Presiding Meeting Officer reserves the right to deny this request, or will call you to the podium when your agenda Item is ready to be heard. Presentations, if allowed, may be limited to five (5) minutes per person, with a limit of three (3) individuals speaking per topic position. Please come to the podium, and clearly state your name and address for the record and the agenda topic you wish to speak upon in a professional manner.
2. Roll Call
3. Discussion of the DRAFT Update to the Zoning Regulations for the City of Hickman and its Zoning Authority
4. Meeting Adjournment



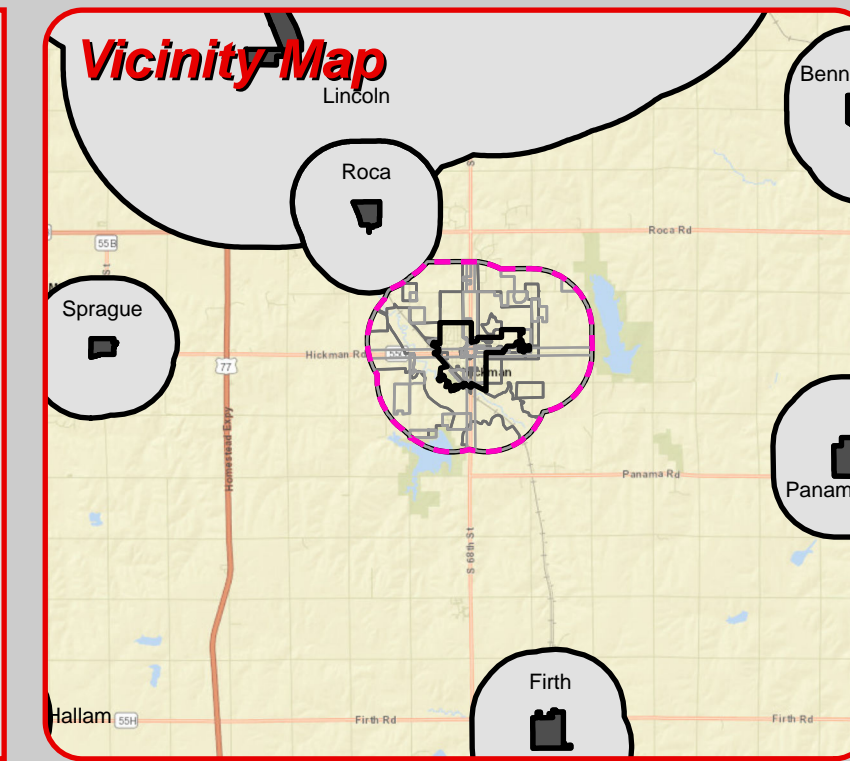
Legend

- C-1** COMMERCIAL LIMITED
- C-2** GENERAL COMMERCIAL
- I-1** INDUSTRIAL
- CO** CORRIDOR OVERLAY
- FS-1** FLEX SPACE MIXED USE
- R-1** RESIDENTIAL ESTATES
- R-2** MEDIUM DENSITY RESIDENTIAL
- R-3** HIGH DENSITY RESIDENTIAL
- TA** TRANSITIONAL AGRICULTURE

- 1-Mile ETJ
- Hickman Corporate Limits
- Townships
- Sections
- Ownership Parcels
- Village of Roca 1-Mile ETJ

Flood Zones

- *100-Year Floodplain Overlay
- *Floodway Overlay



Note:

*The 100-Year Floodplain areas shown on this map are a generalized representation of the Floodplain boundaries shown on the following FIRM panels in the 31109C series:
0445F, 0444F, 0463F, 0557F, 0576F

The above mentioned FIRM Panels are specific to the City of Hickman, and were officially adopted as of 2/18/2011, and must be referred to for interpretation of Floodplain areas.

The aerial imagery used for this map was collected in March 2020.

This map was prepared using information from record drawings supplied by JEO and/or other applicable city, county, federal, or public or private entities. JEO does not guarantee the accuracy of this map or the information used to prepare this map. This is not a scaled plot.

THIS IS TO CERTIFY THAT THIS IS THE OFFICIAL ZONING MAP REFERRED TO IN ORDINANCE NO. _____ OF THE CITY OF HICKMAN, NEBRASKA. THIS OFFICIAL ZONING DISTRICT MAP SUPERSEDES AND REPLACES ANY OR ALL OTHER OFFICIAL ZONING DISTRICT MAPS ADOPTED ON THIS DAY OF _____.

MAYOR, CITY OF HICKMAN, NEBRASKA _____ ATTESTED: CITY CLERK _____

REVISION DATE	ORDINANCE NO.	SIGNATURE	REVISION DATE	ORDINANCE NO.	SIGNATURE

City of Hickman
Lancaster County, Nebraska
Official Zoning Map

1 Inch = 600 Feet

Created By: J. Sather
Revised By: M. Frates
Date: 8/18/2022
Software: ArcGIS Pro 3.0.1
File: 110273.00