

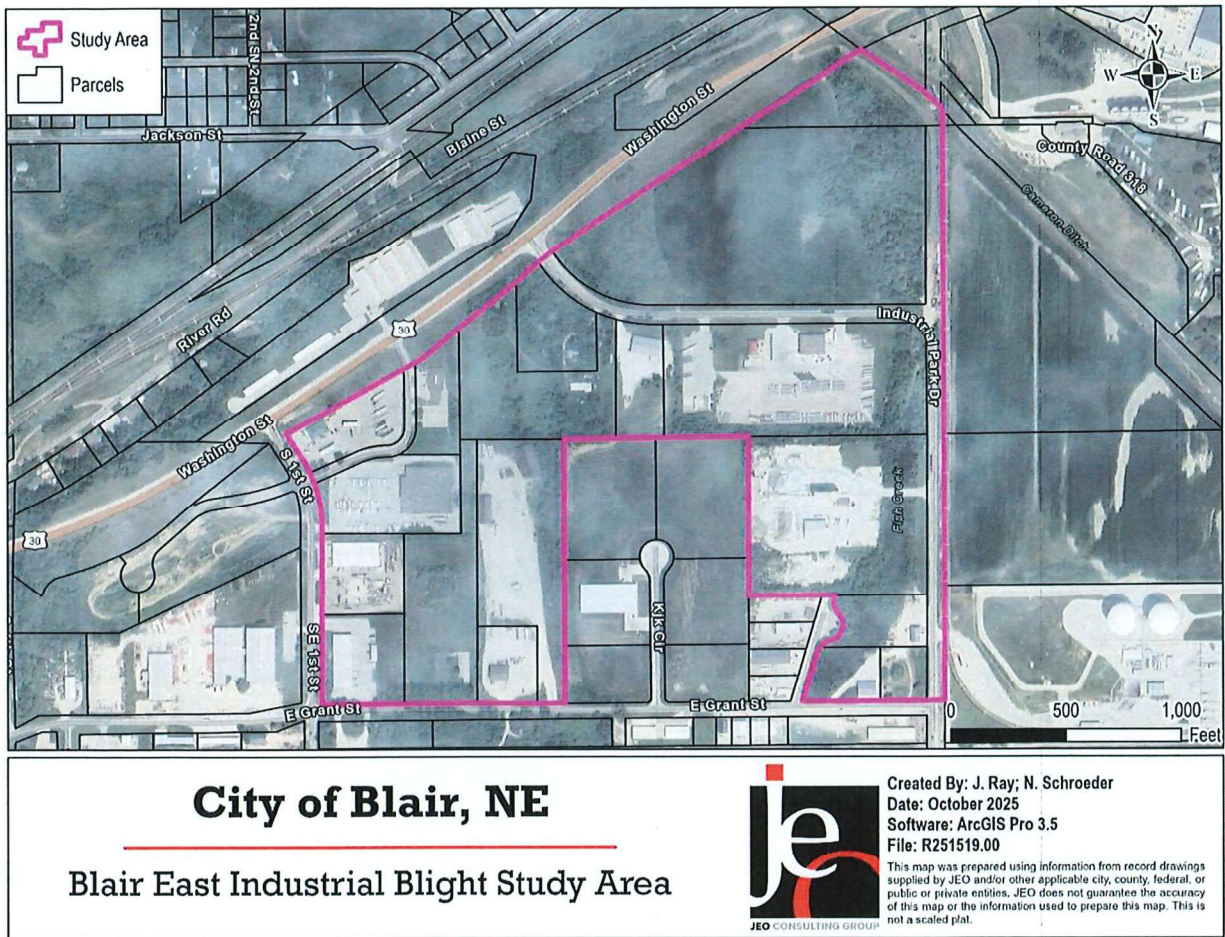
Designated Study Area

The designated study area is in and partially outside the current Corporate Limits of the City of Blair. The designated study area was selected for a number of reasons, including:

1. The presence of blighted and substandard characteristics within the study area.
2. The potential for private development and redevelopment activities in the study area.
3. The need for improvements in infrastructure due to specific existing conditions.
4. The economical and functional obsolescence of certain properties within the study area.
5. The need for public intervention to stimulate the development and redevelopment of vital infrastructure systems and housing to support these private redevelopment efforts.

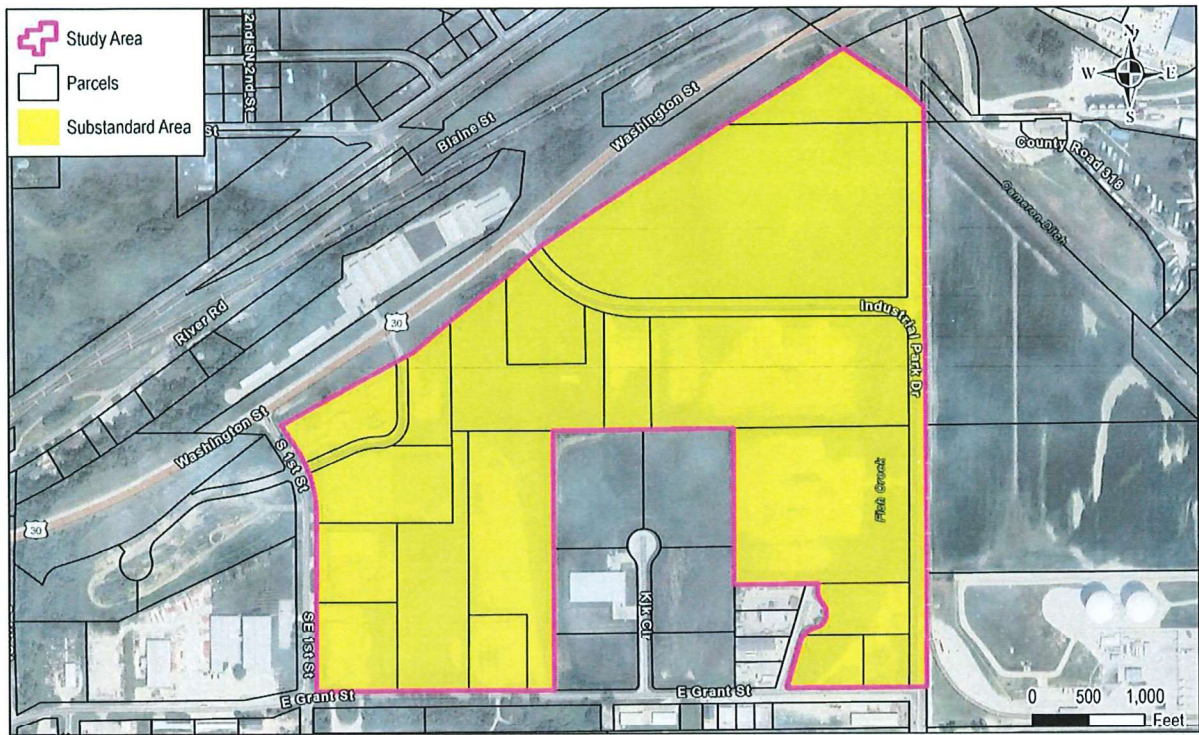
The study area as identified can be found in Figure 1. For this study, the study area will be known as the “Designated Study Area” which was reviewed for substandard and blight characteristics.

Figure 1: Designated Study Area



A portion of the designated study area is located outside but adjacent to the corporate limits of the City of Blair and within the City’s extra-territorial jurisdiction. Because this portion of the designated study area is not yet located within the corporate limits, the area or portions thereof will need to be annexed to be included in the Community Development Agency’s area of operation to become eligible for Tax Increment Financing, as specific projects make application to the CDA for a redevelopment project.

Figure 7 Recommended Blight and Substandard Designation



City of Blair, NE

Blair East Industrial Blight Study: Recommended Blight & Substandard Area



Created By: J. Ray; N. Schroeder
Date: October 2025
Software: ArcGIS Pro 3.5
File: R251519.00

This map was prepared using information from record drawings supplied by JEO and/or other applicable city, county, federal, or public or private entities. JEO does not guarantee the accuracy of this map or the information used to prepare this map. This is not a scaled plan.