

ARLINGTON
PUBLIC SCHOOLS



Visioning Workshop
January 12, 2026

Recap





WELCOME

Workshops

Why Change?

Understanding School Design

Learning Connections

Priorities Activity

Pictures Worth a 1000 Words

I See | We See

A Day in the Life Activity

Visual Listening

Design Your Dream school



WE SEE

We See Statement

We see Arlington Public Schools with modern facilities that stay true to our **rural roots** – an inviting, **community-centered** place where students feel **valued**, build **real-world** skills and grow with **confidence** in a functional, inspiring space.



GUIDING PRINCIPALS



Welcoming and Inclusive:

Create environments where every person feels safe, valued, and invited.



Foster Experiential Learning:

Design for curiosity, creativity, and hands-on, real-world engagement.



Support Well-Being and Nature Connection:

Promote health, calm, and whole-person development through nature-rich, wellness-centered design.



Design with Purpose and Future Vision:

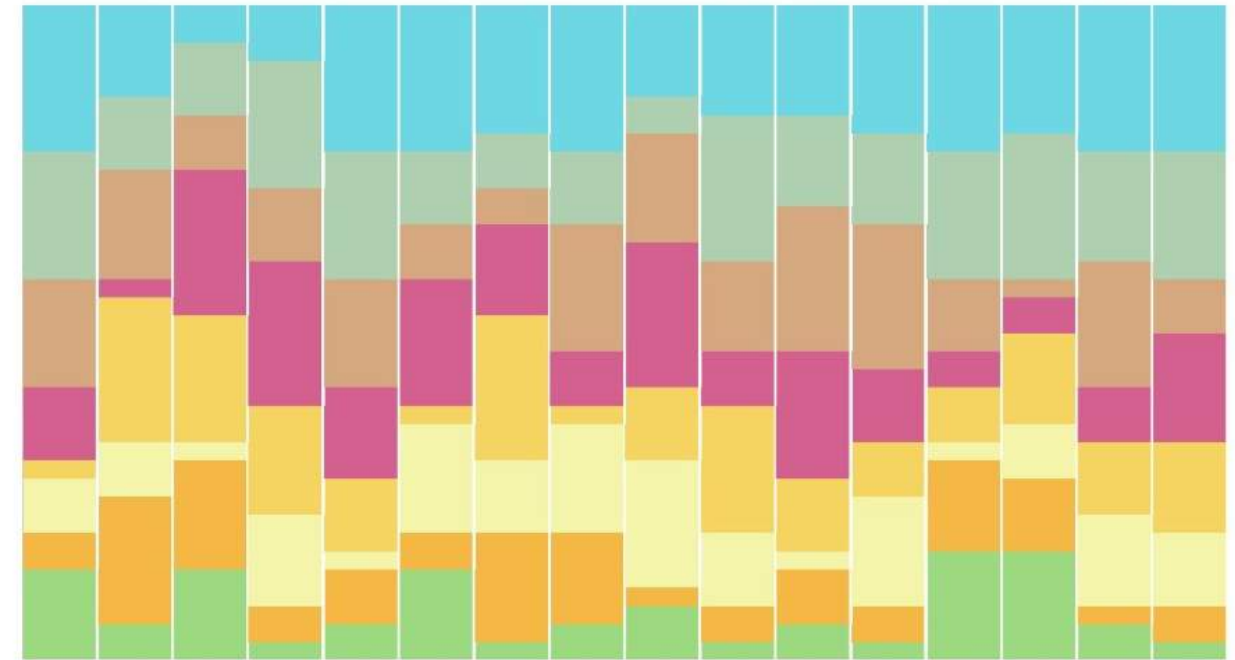
Build functional, timeless spaces that are adaptable, innovative, and grounded in community heritage.

VISION

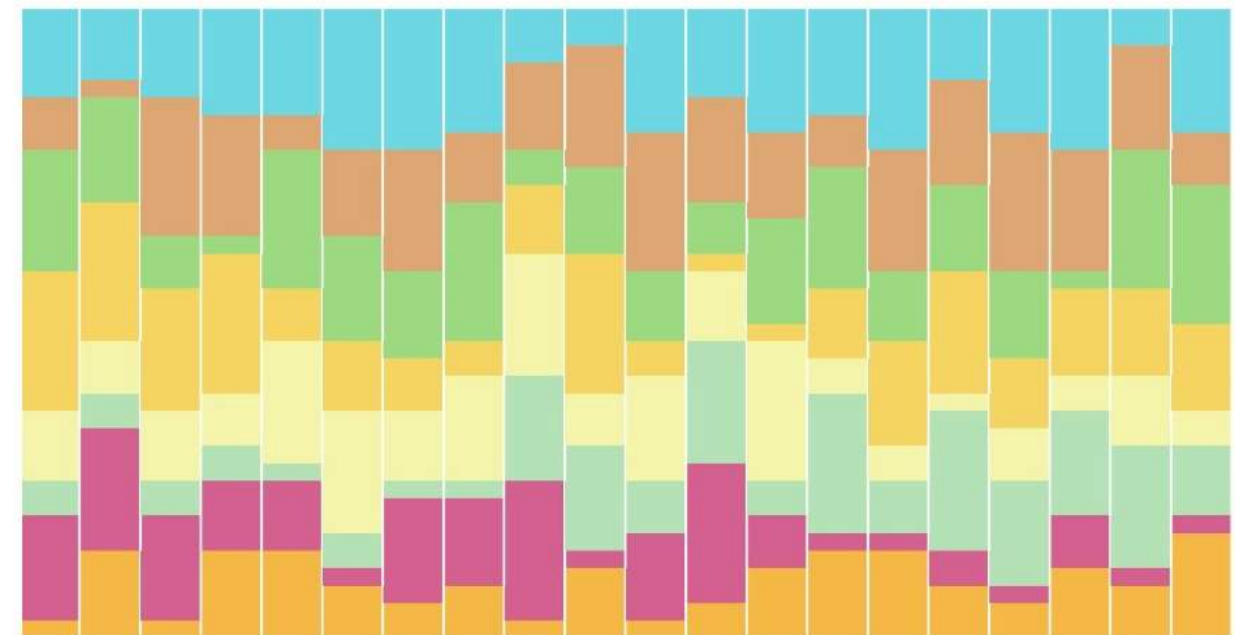
Participant Priorities

Arlington staff, faculty, parents, and community members were asked to rank their top priorities for the project's overall success to gain a further understanding of the communities needs. Nine unique priorities were provided based on information previously gathered from teacher interviews. Each participant ranked the priorities in order from high to low based on the individual's definition of success.

EXPANDED ACADEMIC PATHWAYS (CTE RENO)	ACTIVITIES ENTRY IDENTITY & EXPANDED COMMONS	FLEXIBLE LEARNING & COLLABORATION SPACE
FINE & PERFORMING ARTS EXPANSION	EXPANDED ATHLETIC SPACE (WRESTLING ROOM)	SPECIAL EDUCATION & RESOURCE SPACE
LOCKER ROOMS & RESTROOMS	PARKING AND SITE CIRCULATION	OTHER (WRITE IN)



Priority rankings following the first workshop with the community. Expanded academic pathways, activities entry identity, and flexible learning space ranked as the top three priorities.

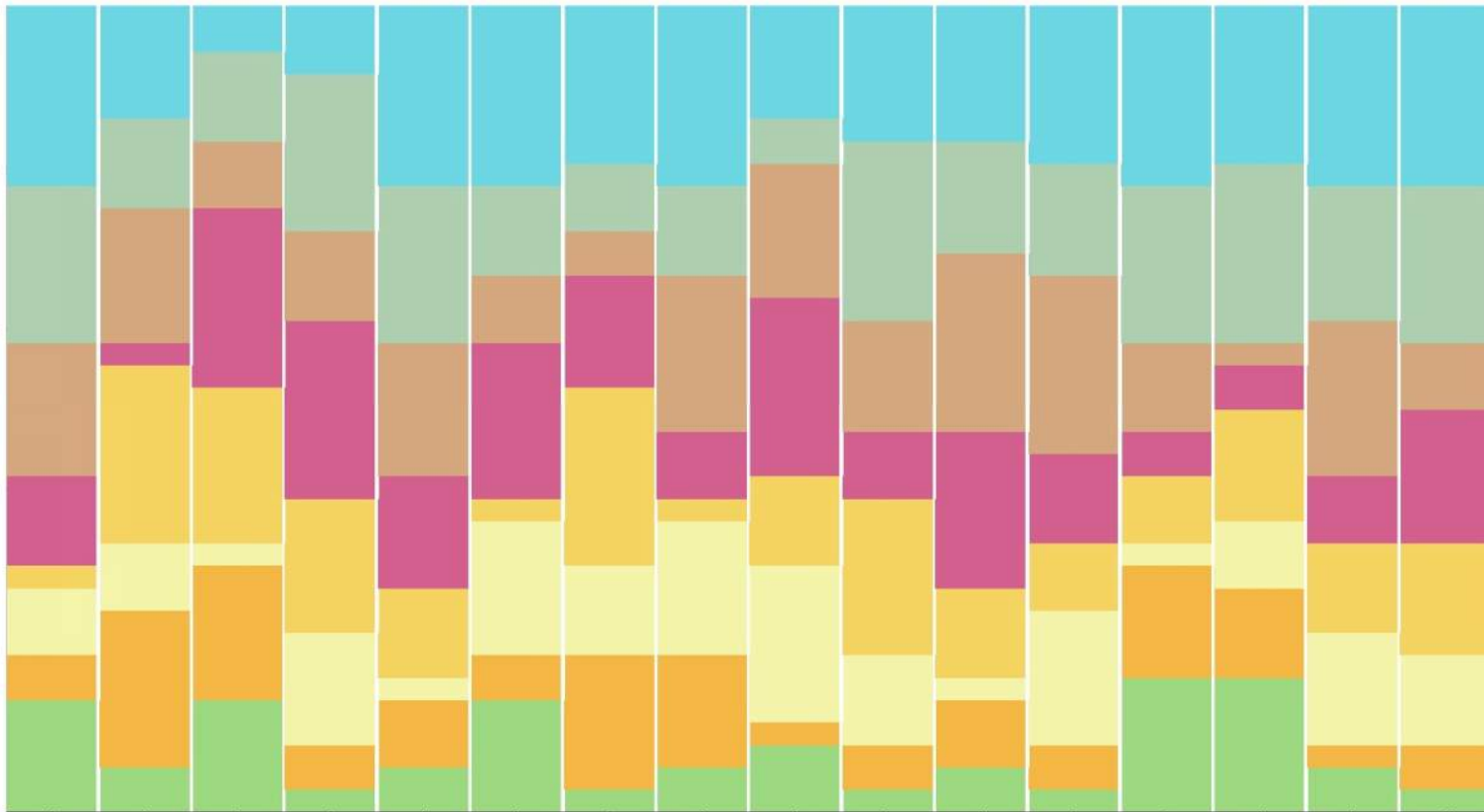


Priority rankings from students, parents, and teachers following parent-teacher conferences. Expanded academic pathways and flexible learning and collaboration space remained in the top three priorities with the addition of parking and site circulation

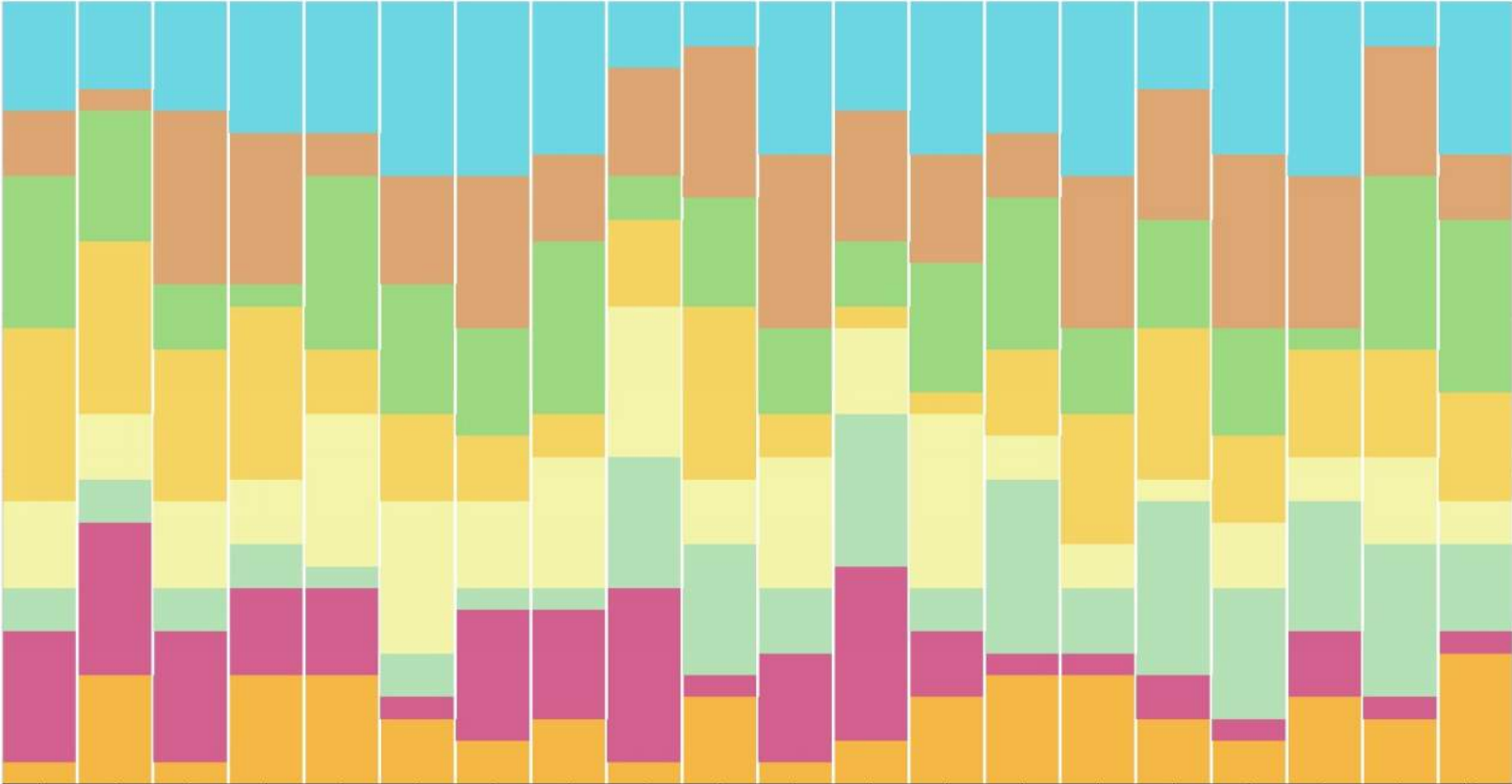
Recap



WORKSHOP PRIORITY RESULTS



PARENT-TEACHER CONFERENCE PRIORITY RESULTS



- Expanded Academic Pathways (CTE Reno)
- Activities Entry Identity & Expanded Commons
- Flexible Learning & Collaboration Space
- Fine & Performing Arts Expansion
- Expanded Athletic Space (Wrestling Room etc.)
- Special Education & Resource Space
- Locker Rooms & Restrooms
- Parking & Site Circulation

Recap | Learning Connections

SPACES FOR CREATIVE WORK

LARGE GROUP SPACES

DIFFERENTIATED TEACHING

VISIBLE LEARNING

TEACHING THROUGH INSTRUCTIONAL TECHNOLOGY

FURNITURE THAT SUPPORTS INDIVIDUALS

OUTDOOR SPACES

PRESENTATION SPACES

AUTHENTIC/REAL WORLD LEARNING

FLEXIBLE TECHNOLOGY

INQUIRY BASED TEACHING

ERGONOMIC FURNITURE

CONNECTIONS TO NATURE

OPTIONAL PRIVACY

HEALTH AND WELLNESS

WORKSHOP MODEL TEACHING

SPACES THAT ALLOW MOVEMENT

PERSONALIZED LEARNING

FLEXIBLE FURNITURE TYPES

Design Your Dream School



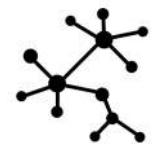
DREAM SCHOOL



FRONT DOOR



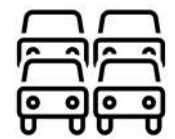
OUTDOOR LEARNING ENVIRONMENTS



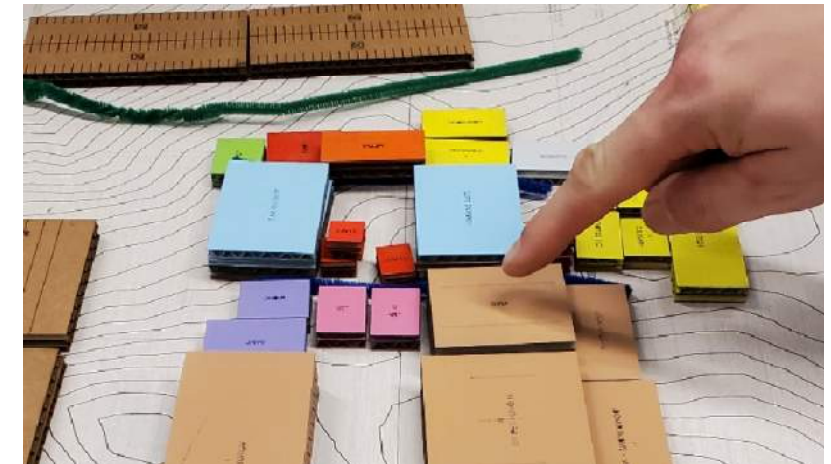
BUILDING ADJACENCIES



OUTDOOR PLAY / ACTIVITY



TRAFFIC FLOW – BUS, CAR, PEDESTRIAN



DREAM SCHOOL



CRITICAL DESIGN ELEMENTS



SPECIFIC FACILITY NEEDS



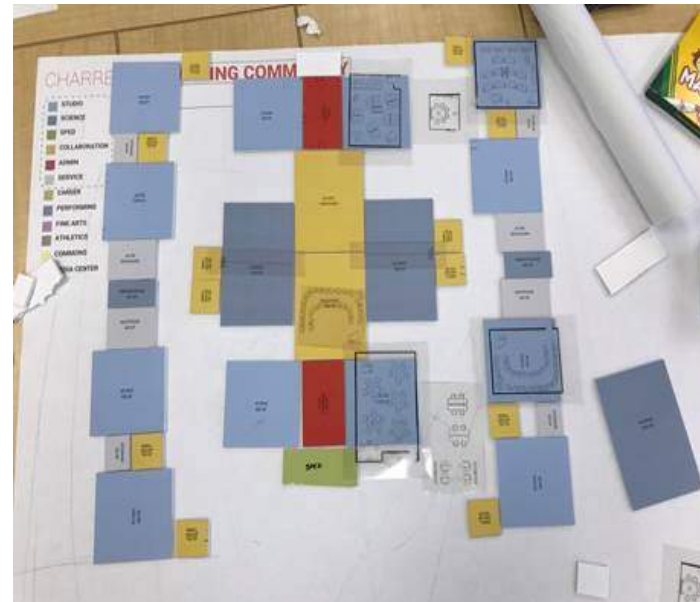
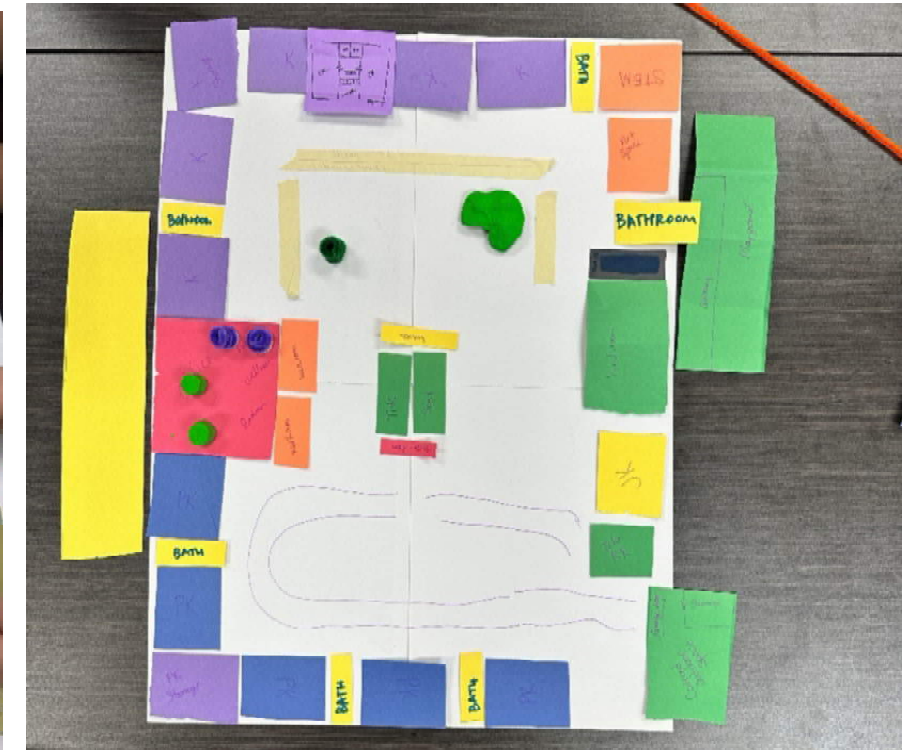
UNIQUE OPPORTUNITIES

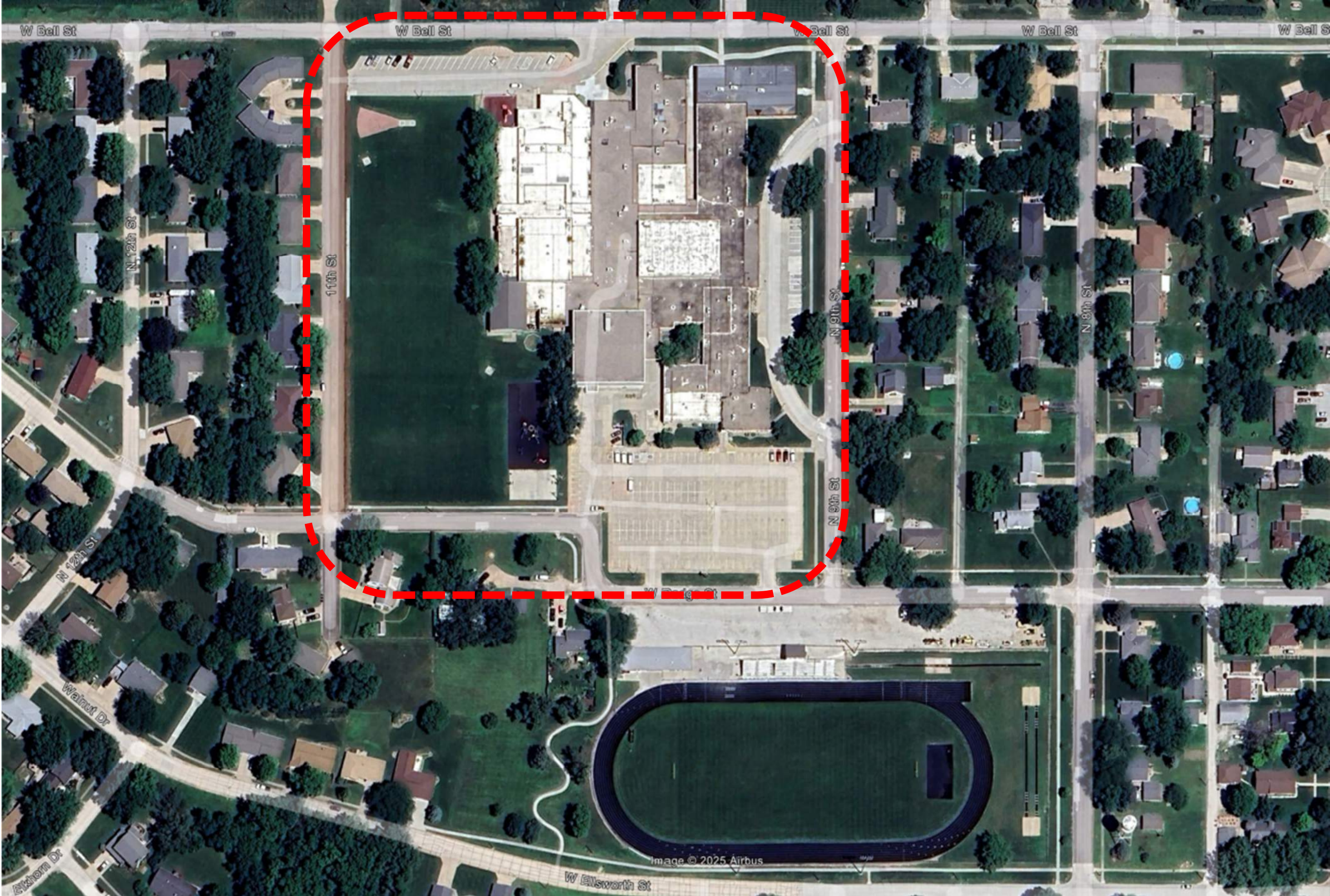


STUDENT AND STAFF NEEDS



IMPORTANT ADJACENCIES



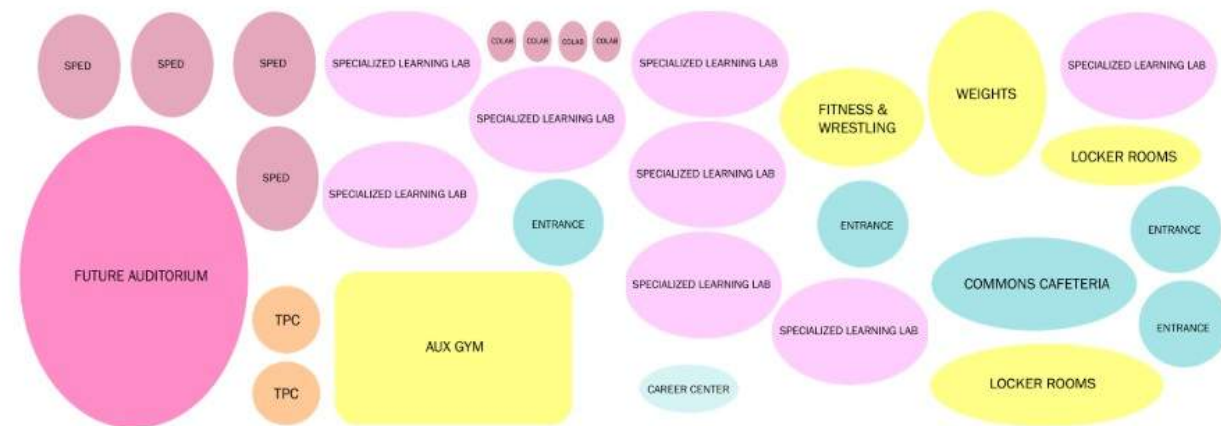


MACRO ORGANIZATION

Design Your Dream School

25 years into the Future

The Arlington team was supplied with the site plan as well as manipulatives labeled with all the items on the priority list. They were instructed to utilize these pieces and put them on the site where they thought they should be and to make sure to include adjacencies as well as any notes. At the conclusion each group presented to the entire committee and addressed any questions. Each committee member was asked to identify items they liked and did not with each plan and to pick their 2 favorite options

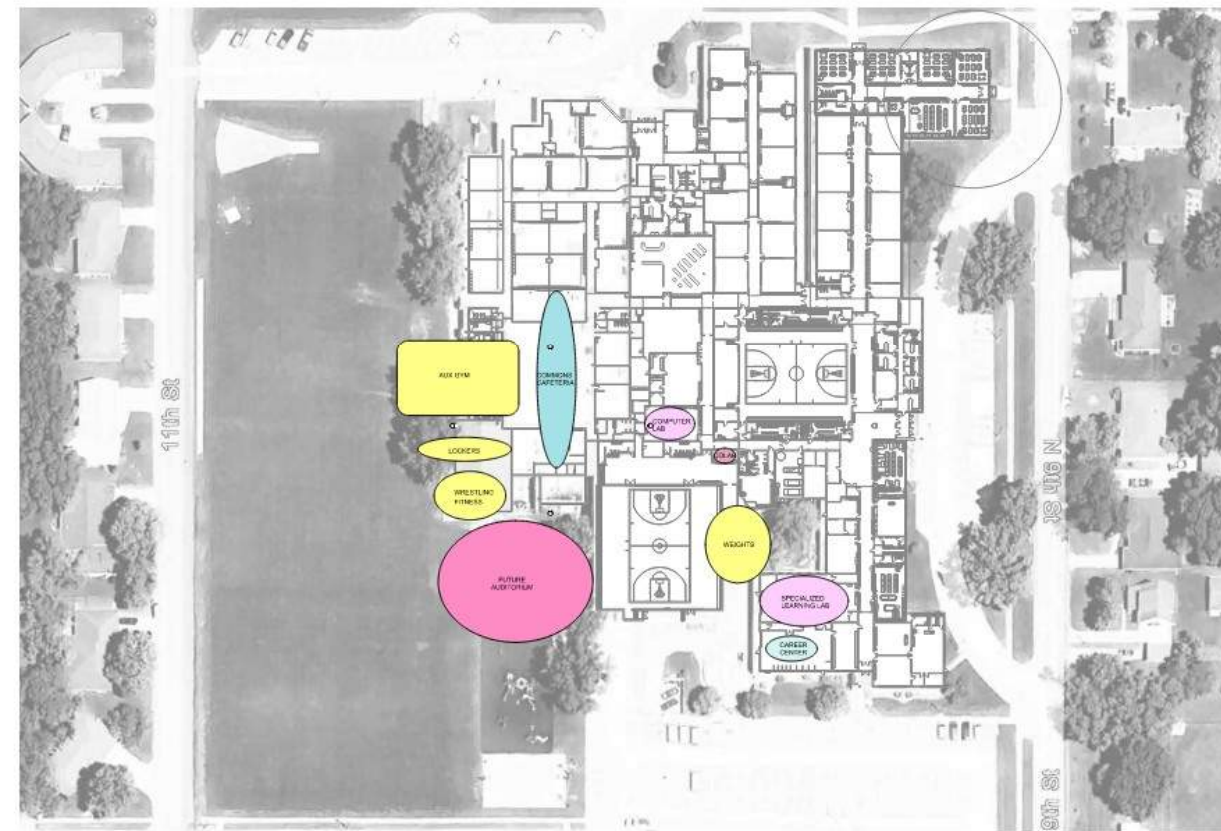


MACRO ORGANIZATION



Option A Synthesis

- Option A received positive feedback related to traffic flow, athletics, and CTE improvements, but generated significant concern around moving science rooms.

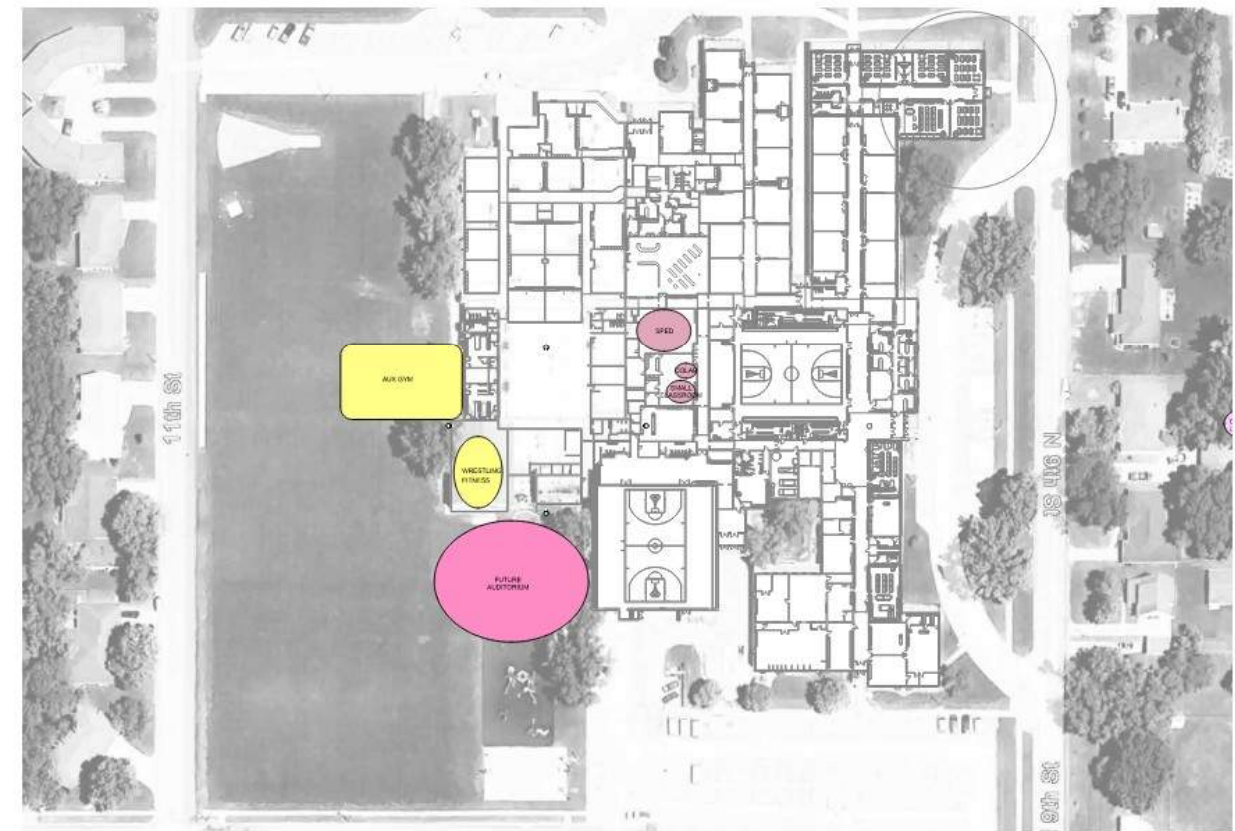


MACRO ORGANIZATION



Option B Synthesis

- Option B emerged as the strongest choice, primarily due to its improved auditorium placement, expanded parking, and effective reuse of space.



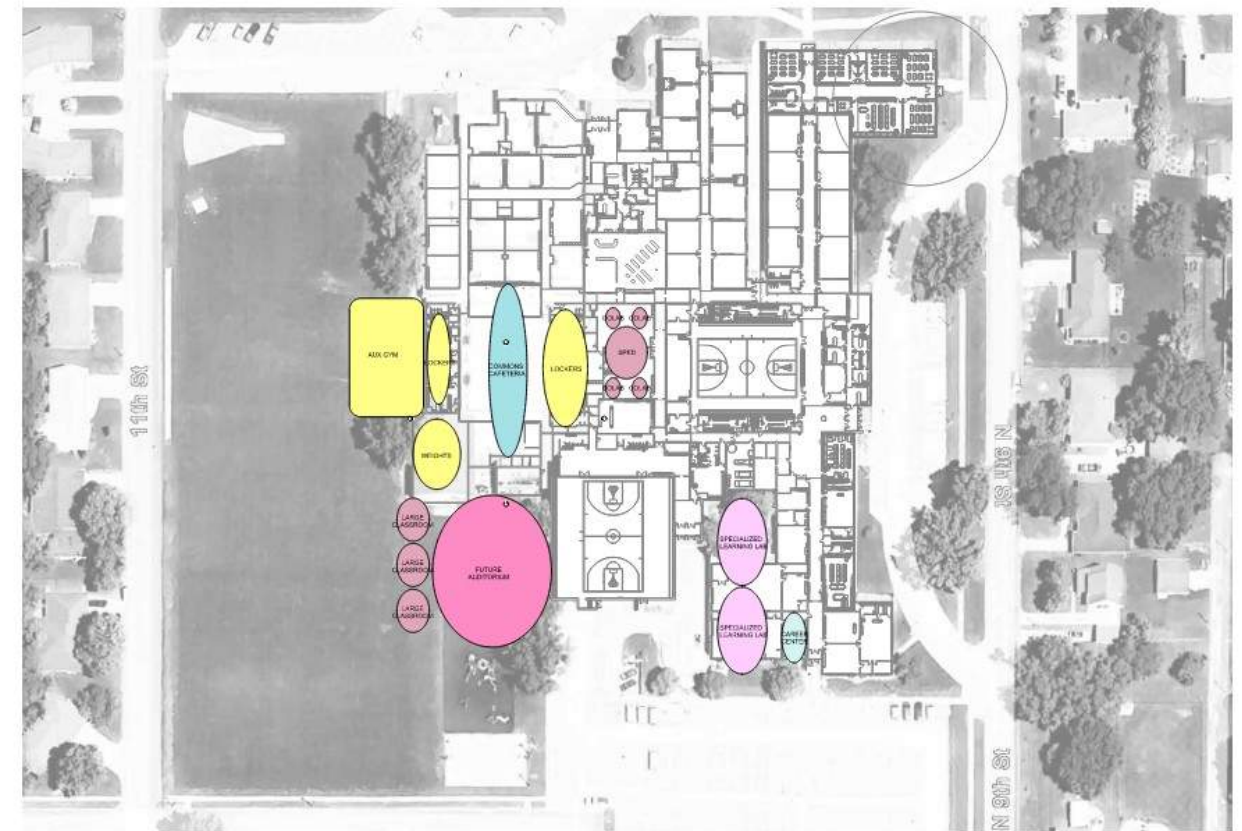
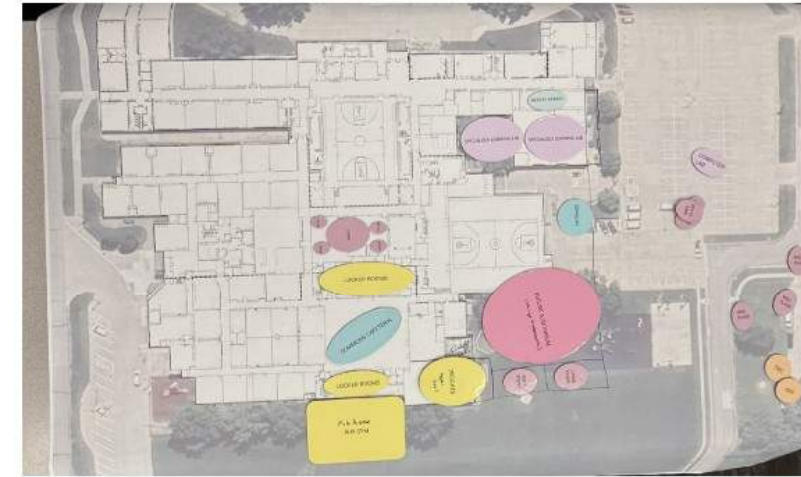
MACRO ORGANIZATION



Option C Synthesis

- Option C, while praised for its elementary classroom expansion, fitness space improvements, and Blue Gym repurposing, was consistently criticized for providing no additional parking and introducing several undesirable academic space shifts.

MACRO ORGANIZATION



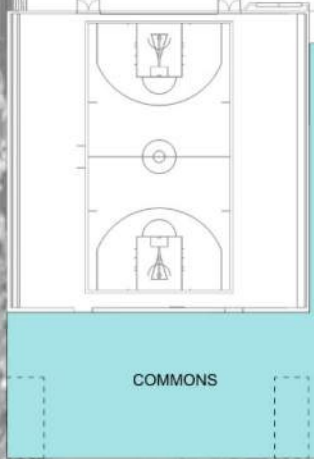


11th St

W 10th St

W 10th St

N 9th St



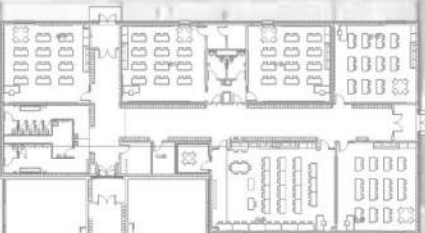
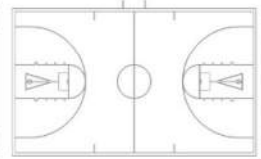
COMMONS



SPECIALIZED LEARNING LAB



SPECIALIZED LEARNING LAB



11th St

W 10th St

W 10th St

N 9th St

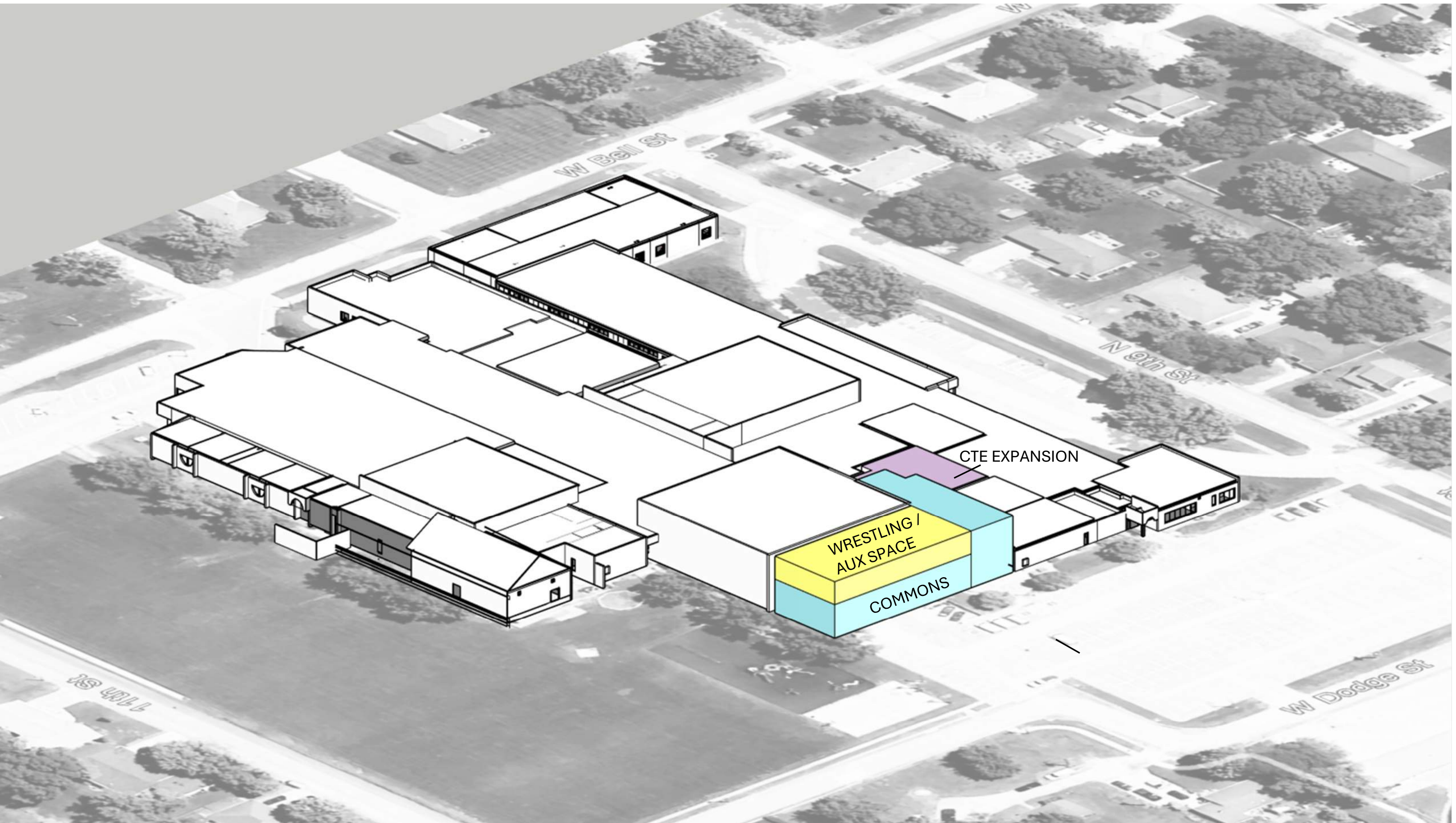


WRESTLING /
AUX SPACE

COMMONS

SPECIALIZED
LEARNING LAB

SPECIALIZED
LEARNING LAB



W Bell St

N 9th St

CTE EXPANSION

WRESTLING /
AUX SPACE

COMMONS

W 1st St

W Dodge St

Project Scope

Expanded Academic pathways (New Addition 3350 SF)

- Construction Lab

- Manufacturing Lab

- Finishing Room

- Tool Storage

- Locker Room/Changing Rooms

- Reno 6700 SF existing space including classroom and industrial tech

Activities Entry & Expanded Commons (10,000 SF new Addition)

New wrestling and activities space (5500 SF 2nd floor over Commons)

Total Renovation and New Additions = 25,350 SF

Total project cost estimate = between \$11 - \$13 Million

BEFORE YOU LEAVE PLEASE ANSWER BELOW:

3 THINGS I AM EXCITED ABOUT AFTER HEARING ABOUT THE FUTURE PLANS

2 THINGS I AM CONCERNED ABOUT WITH THIS FUTURE PLAN

ADDITIONAL QUESTIONS I HAVE