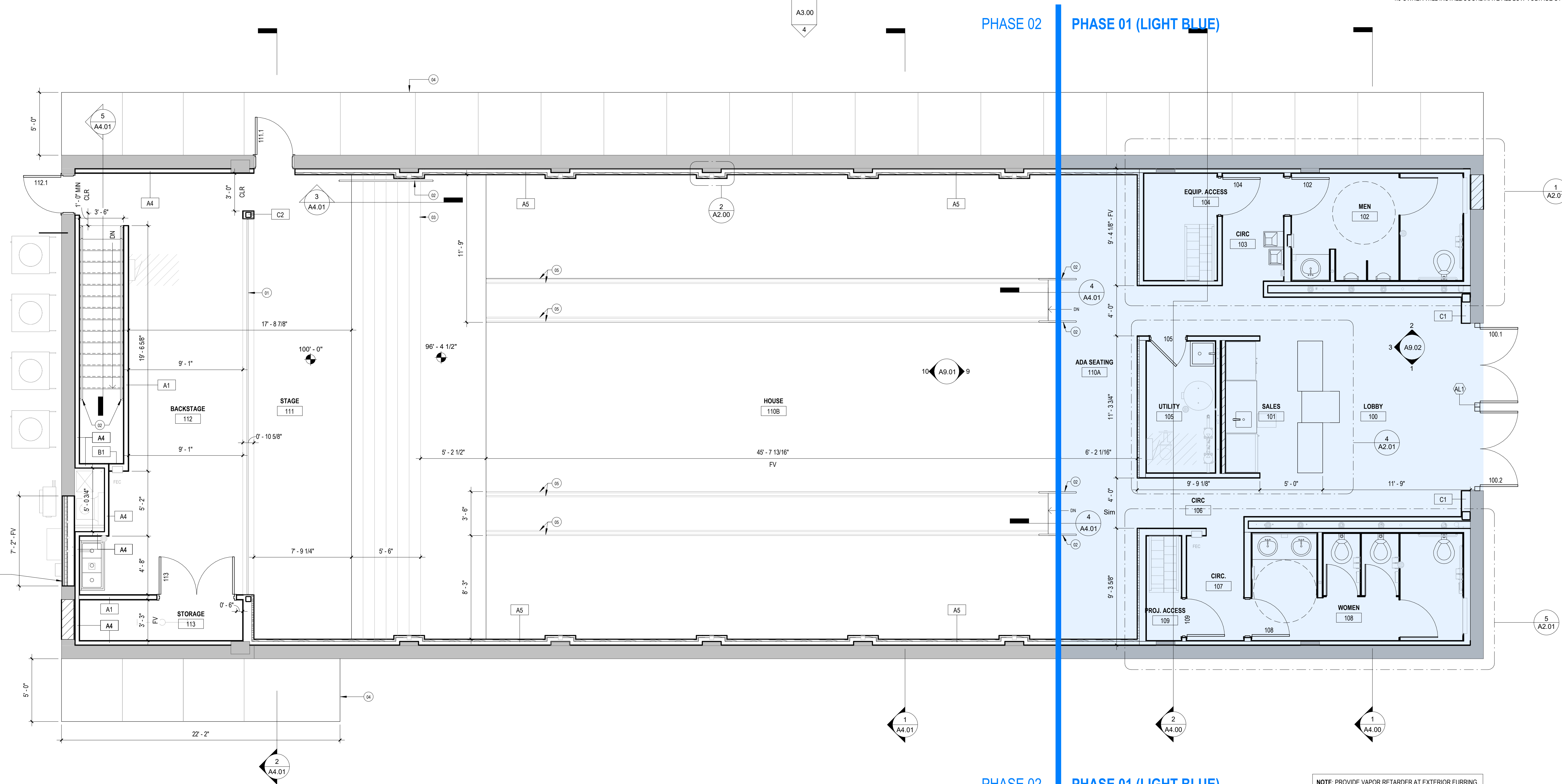


6/15/2022 11:19:57 PM

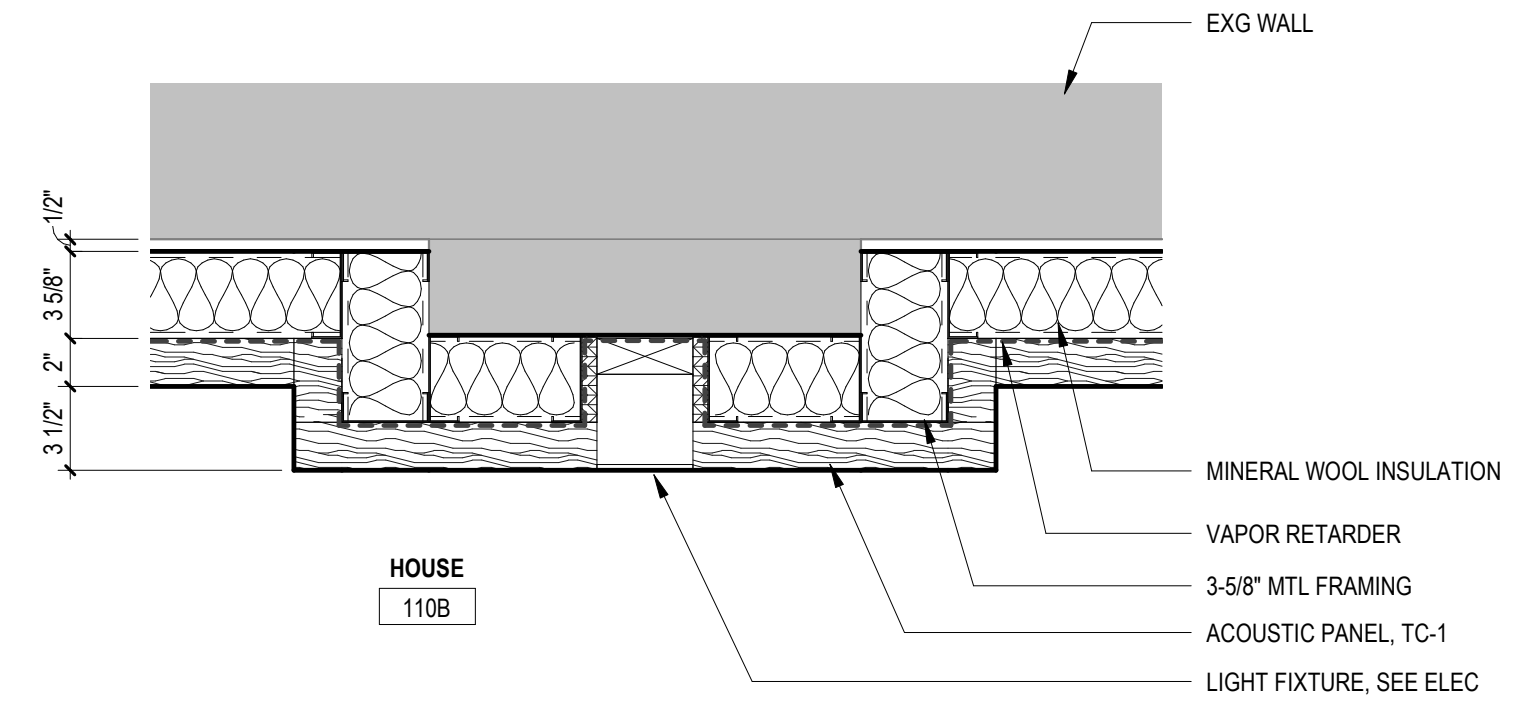
1 FIRST FLOOR PLAN  
A2.00 1/4" = 1'-0"

EXTERIOR WALL INFILL  
5/8" GYP BD  
6" MTL STUD FRAMING  
3" CLOSED CELL SPRAY FOAM IN STUD SPACE  
5/8" EXT GYP SHEATHING  
AIR BARRIER MEMBRANE  
2" RIGID INSULATION W/ Z-GIRTS  
METAL WALL PANEL



NOTE: PROVIDE VAPOR RETARDER AT EXTERIOR FURRING.

MARK	DESCRIPTION
01	RETRACTABLE MOVIE SCREEN. COORDINATE WITH MOVIE THEATER EQUIPMENT VENDOR.
02	STEEL PIPE HANDRAIL, PAINT.
03	WOOD STAIRS. CONSTRUCT WITH FIRE RETARDANT TREATED LUMBER.
04	SIDEWALK - 4" SLAB ON GRADE CONCRETE.
05	LIGHT FIXTURE. SEE ELEC.
06	PAINTED STEEL TOILET PARTITIONS.
07	ALTERNATING TREAD DEVICE.
08	MECHANICAL EQUIPMENT, SEE MECH.
09	SOLID SURFACE COUNTERTOP, SS-1
10	MCP SINK, OPCI.



2 PLAN DETAIL - VERTICAL ACCENT LIGHT - TYP  
A2.00 1 1/2" = 1'-0"

### GENERAL NOTES

- GENERAL
  - CONTRACTOR SHALL VERIFY CONDITIONS AND DIMENSIONS PRIOR TO MATERIAL FABRICATION AND CONSTRUCTION.
  - DIMENSIONS ARE NOMINAL. FINISH FACE TO FINISH FACE, UNLESS OTHERWISE NOTED. DO NOT SCALE FROM DRAWINGS.
  - MATERIAL SYMBOLS AND ABBREVIATIONS USED ON THE ARCHITECTURAL DRAWINGS ARE SHOWN ON DRAWING G0.01.
  - WHEN DRAWING AND SPECIFICATIONS ARE NOT IN AGREEMENT, THE BIDDER SHALL REQUEST WRITTEN CLARIFICATION PRIOR TO BIDDING AND CONSTRUCTION. IF NOT CLARIFIED PRIOR TO BIDDING THE FOLLOWING PRECEDENCE SHALL BE USED TO DETERMINE SCOPE OF THE BID: SIZE QUANTITY CONTROLLED BY DRAWING, MATERIAL QUALITY CONTROLLED BY SPECIFICATION. FINAL INTERPRETATION MUST BE ISSUED BY THE ARCHITECT/ENGINEER PRIOR TO MATERIAL FABRICATION OR CONSTRUCTION.
  - FIRE STOP ALL FLOOR AND WALL PENETRATIONS AS REQUIRED BY CODE.
  - UNLESS OTHERWISE NOTED, ALL FURNITURE IS NIC.
  - ELEMENTS SHOWN IN SOLID HALF TONE LINES INDICATE EXISTING CONDITIONS. ELEMENTS SHOWN IN FULL TONE SOLID INDICATE PROPOSED CONSTRUCTION.
- FLOORS
  - LEVEL ALL EXISTING FLOORS FOR A FLAT, CONTINUOUS SURFACE. EVALUATE FLOOR LEVELNESS AND COORDINATE TRANSITIONS OF FLOOR MATERIALS. CONDUCT POST DEMO MEETING TO EVALUATE REMOVAL AND/OR REPLACEMENT EXTENTS AND OPTIONS.
  - FLOOR FINISH TRANSITIONS TO OCCUR UNDER DOOR CENTERLINES, UNLESS OTHERWISE NOTED.
- WALLS/PARTITIONS
  - FIRE AND SMOKE RATED PARTITIONS ARE SHOWN ON THE FLOOR PLANS AND/OR CEILING PLANS. WALLS DESIGNATED WITH TO BE 1 HR. RATED. SEE FLOOR PLANS.
  - ALL INTERIOR METAL STUD PARTITIONS ARE 3 5/8" 25 GA STUDS WITH 5/8" GYPSUM BOARD EACH SIDE UNLESS OTHERWISE NOTED. SEE WALL TYPES ON SHEET G0.02.
  - FILL STUD PARTITIONS WITH ACOUSTICAL BLANKET INSULATION AS INDICATED BY WALL TYPE.
  - PROVIDE SOLID WOOD BLOCKING BEHIND WALL MOUNTED EQUIPMENT, SHELVES, CABINETS, OWNER PROVIDED ART AND SIMILAR ITEMS ON GYPSUM BOARD/STUD PARTITIONS.
  - PROVIDE CONTROL JOINTS NOT TO EXCEED THE SPACES INDICATED BELOW. OBTAIN APPROVAL OF LOCATIONS FROM THE ARCHITECT PRIOR TO CONSTRUCTION.

MATERIAL / EXPOSURE	MAX. SPACING	DETAIL ON SHEET
INTERIOR GYPSUM BOARD CEILING W/ PERIMETER RELIEF	50" ANY DIRECTION	-
ALL OTHER INTERIOR OR EXTERIOR GYPSUM BOARD WALLS OR CEILING	30" ANY DIRECTION	-

- PROVIDE WATER RESISTANT BOARD AT ALL WET WALL AREAS.
- EVALUATE EXISTING MASONRY WALLS. TUCKPOINT WALLS AS RECOMMENDED.
- OWNER PROVIDED EQUIPMENT
  - CONTRACTOR TO COORDINATE THE INSTALLATION OF EQUIPMENT WITH OWNER SUPPLIERS/ CONTRACTORS.
  - OWNER PROVIDED FURNITURE INDICATED FOR INFORMATION AND COORDINATION PURPOSES.
  - OWNER WILL INSTALL/COORDINATE ALL LOW VOLTAGE SYSTEMS.

**TACK**architects  
2922 N 61<sup>st</sup> Street, Studio 1  
Omaha Nebraska 68104  
www.tackarch.com

Isis Theatre Renovation

139 West 13th Street  
Crete, Nebraska 68333

© 2022 TACKarchitects, Inc.  
These documents have been prepared by TACKarchitects, Inc. specifically for the following project:  
Isis Theatre Renovation  
They are not suitable for use on other projects or locations without the express written approval and participation of TACKarchitects, Inc. Any reproduction is prohibited.

AGENCY APPROVAL(S):

NO.	REVISION	DATE

SHEET NAME:  
**FIRST FLOOR PLAN**

DATE: 2022\_05-23  
PROJECT NO.: 2019.044.00

SHEET NO.:  
**A2.00**