

ARLINGTON  
PUBLIC SCHOOLS

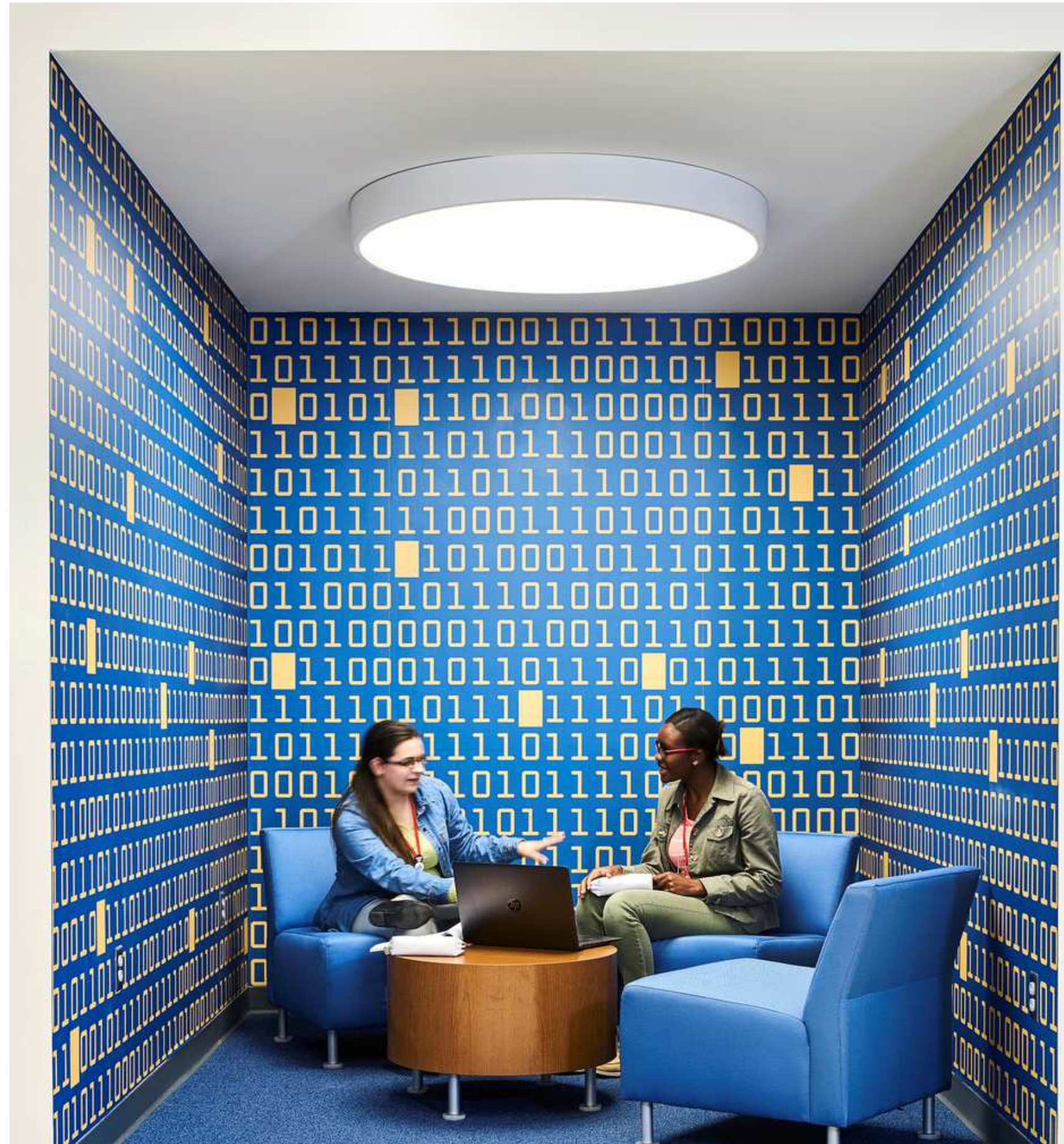


Visioning Workshop  
January 12, 2026

WELCOME

# Agenda

- 01 Welcome & Introductions
- 02 Recap
- 03 Option Review
- 04 Cost Estimating
- 05 Community Event Share Discussion



# Recap





WELCOME

# Workshops

Why Change?

Understanding School Design

Learning Connections

Priorities Activity

Pictures Worth a 1000 Words

I See | We See

A Day in the Life Activity

Visual Listening

Design Your Dream school



# WE SEE

## We See Statement

We see Arlington Public Schools with modern facilities that stay true to our rural roots—an inviting, community-centered place where students feel valued, build real-world skills, and grow with confidence in a functional, inspiring space.



# GUIDING PRINCIPALS

---



Welcoming and Inclusive: Create environments where every person feels safe, valued, and invited.



Foster Experiential Learning: Design for curiosity, creativity, and hands-on, real-world engagement.



Support Well-Being and Nature Connection: Promote health, calm, and whole-person development through nature-rich, wellness-centered design.



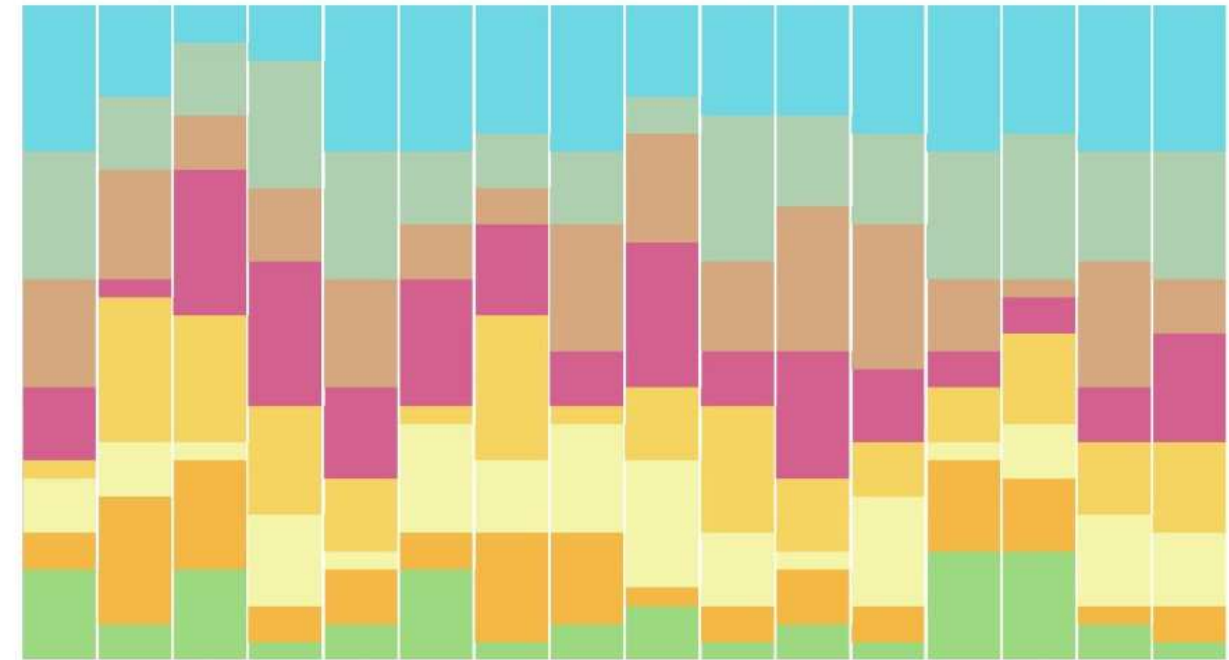
Design with Purpose and Future Vision: Build functional, timeless spaces that are adaptable, innovative, and grounded in community heritage.

VISION

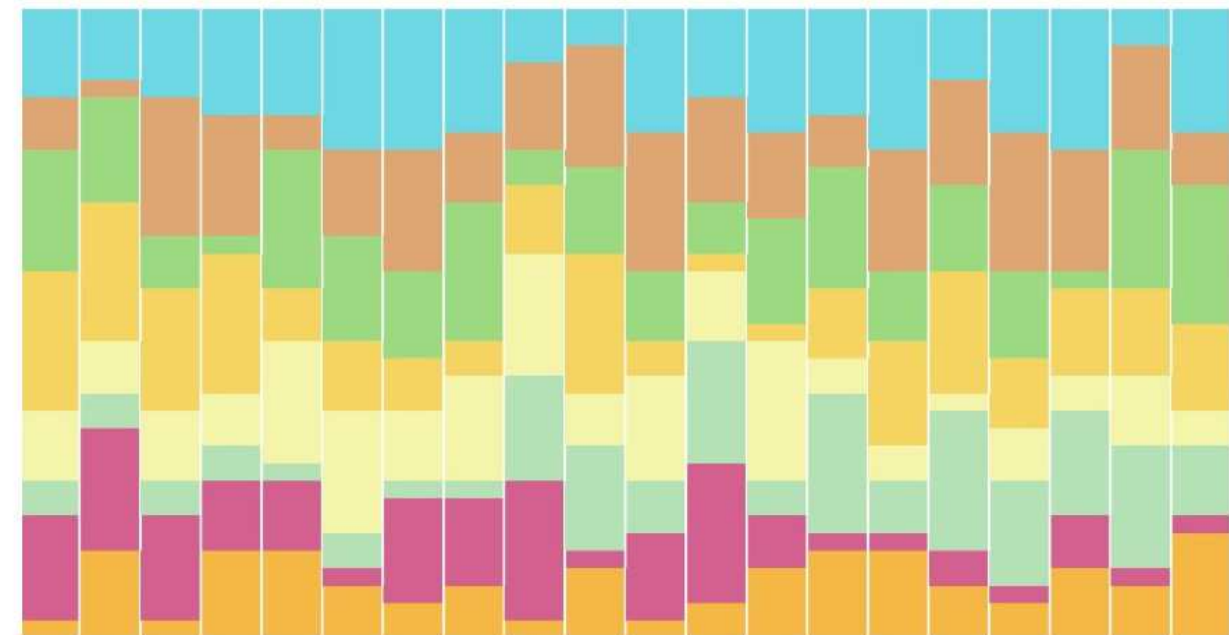
# Participant Priorities

Arlington staff, faculty, parents, and community members were asked to rank their top priorities for the project's overall success to gain a further understanding of the communities needs. Nine unique priorities were provided based on information previously gathered from teacher interviews. Each participant ranked the priorities in order from high to low based on the individual's definition of success.

|                                       |  |   |
|---------------------------------------|--|---|
| EXPANDED ACADEMIC PATHWAYS (CTE RENO) | ACTIVITIES ENTRY IDENTITY & EXPANDED COMMONS | FLEXIBLE LEARNING & COLLABORATION SPACE |
| FINE & PERFORMING ARTS EXPANSION      | EXPANDED ATHLETIC SPACE (WRESTLING ROOM)     | SPECIAL EDUCATION & RESOURCE SPACE      |
| LOCKER ROOMS & RESTROOMS              | PARKING AND SITE CIRCULATION                 | OTHER (WRITE IN)                        |



Priority rankings following the first workshop with the community. Expanded academic pathways, activities entry identity, and flexible learning space ranked as the top three priorities.

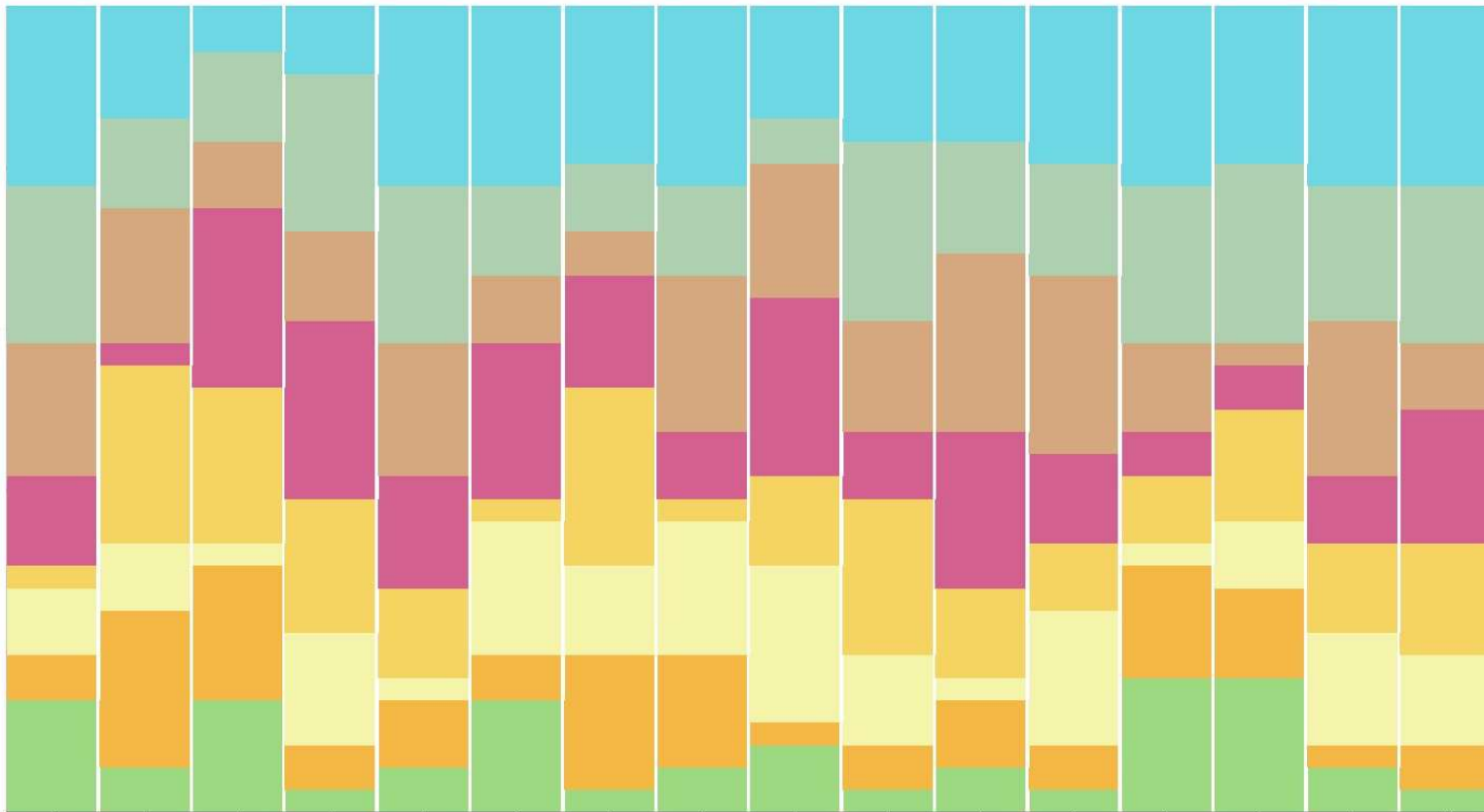


Priority rankings from students, parents, and teachers following parent-teacher conferences. Expanded academic pathways and flexible learning and collaboration space remained in the top three priorities with the addition of parking and site circulation

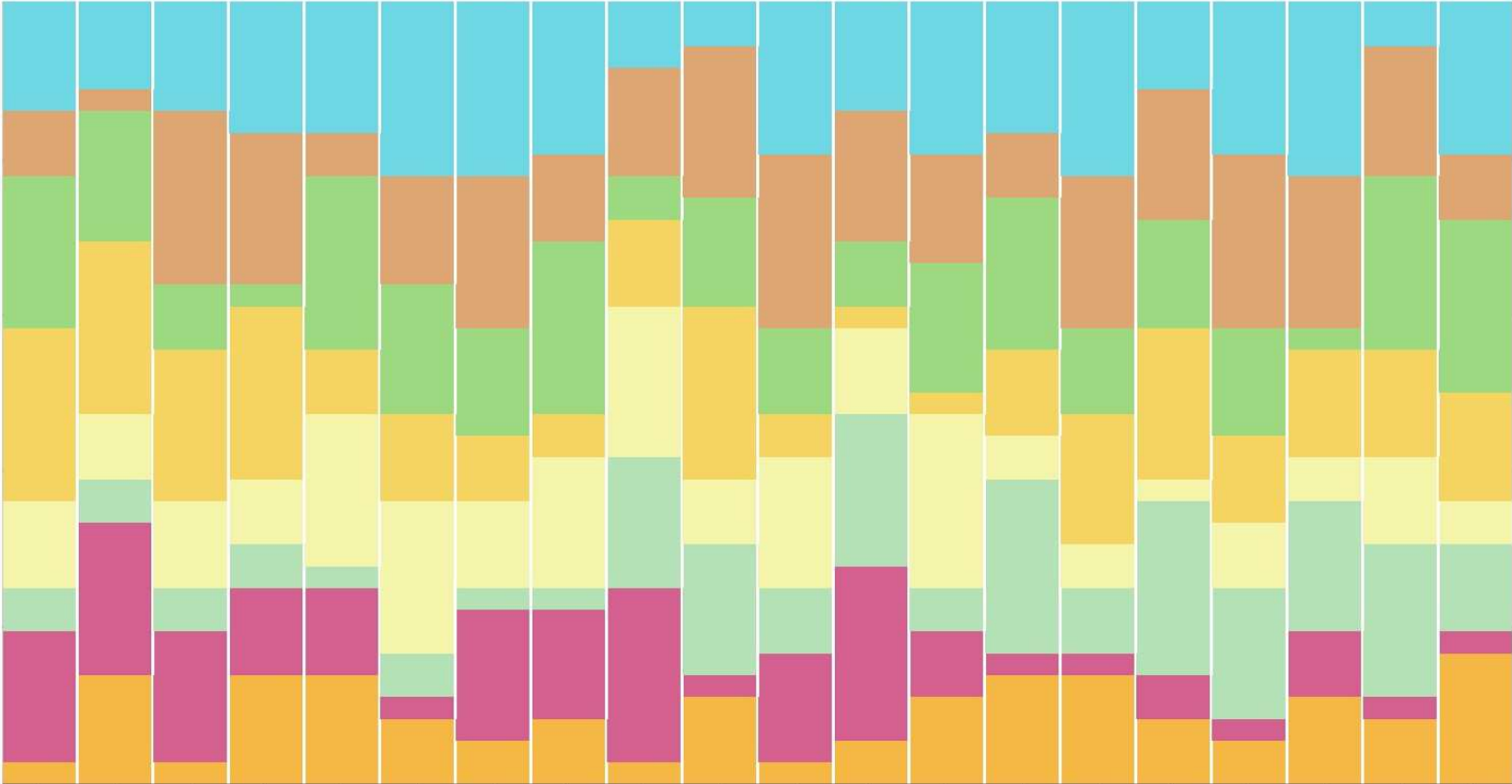
# Recap



## WORKSHOP PRIORITY RESULTS



## PARENT-TEACHER CONFERENCE PRIORITY RESULTS



- Expanded Academic Pathways (CTE Reno)
- Activities Entry Identity & Expanded Commons
- Flexible Learning & Collaboration Space
- Fine & Performing Arts Expansion
- Expanded Athletic Space (Wrestling Room etc.)
- Special Education & Resource Space
- Locker Rooms & Restrooms
- Parking & Site Circulation

Recap | Learning Connections

---

---

SPACES FOR CREATIVE WORK

LARGE GROUP SPACES

DIFFERENTIATED TEACHING

VISIBLE LEARNING

TEACHING THROUGH INSTRUCTIONAL TECHNOLOGY

FURNITURE THAT SUPPORTS INDIVIDUALS

OUTDOOR SPACES

PRESENTATION SPACES

AUTHENTIC/REAL WORLD LEARNING

**FLEXIBLE TECHNOLOGY**

INQUIRY BASED TEACHING

ERGONOMIC FURNITURE

**CONNECTIONS TO NATURE**

OPTIONAL PRIVACY

HEALTH AND WELLNESS

WORKSHOP MODEL TEACHING

SPACES THAT ALLOW MOVEMENT

PERSONALIZED LEARNING

FLEXIBLE FURNITURE TYPES

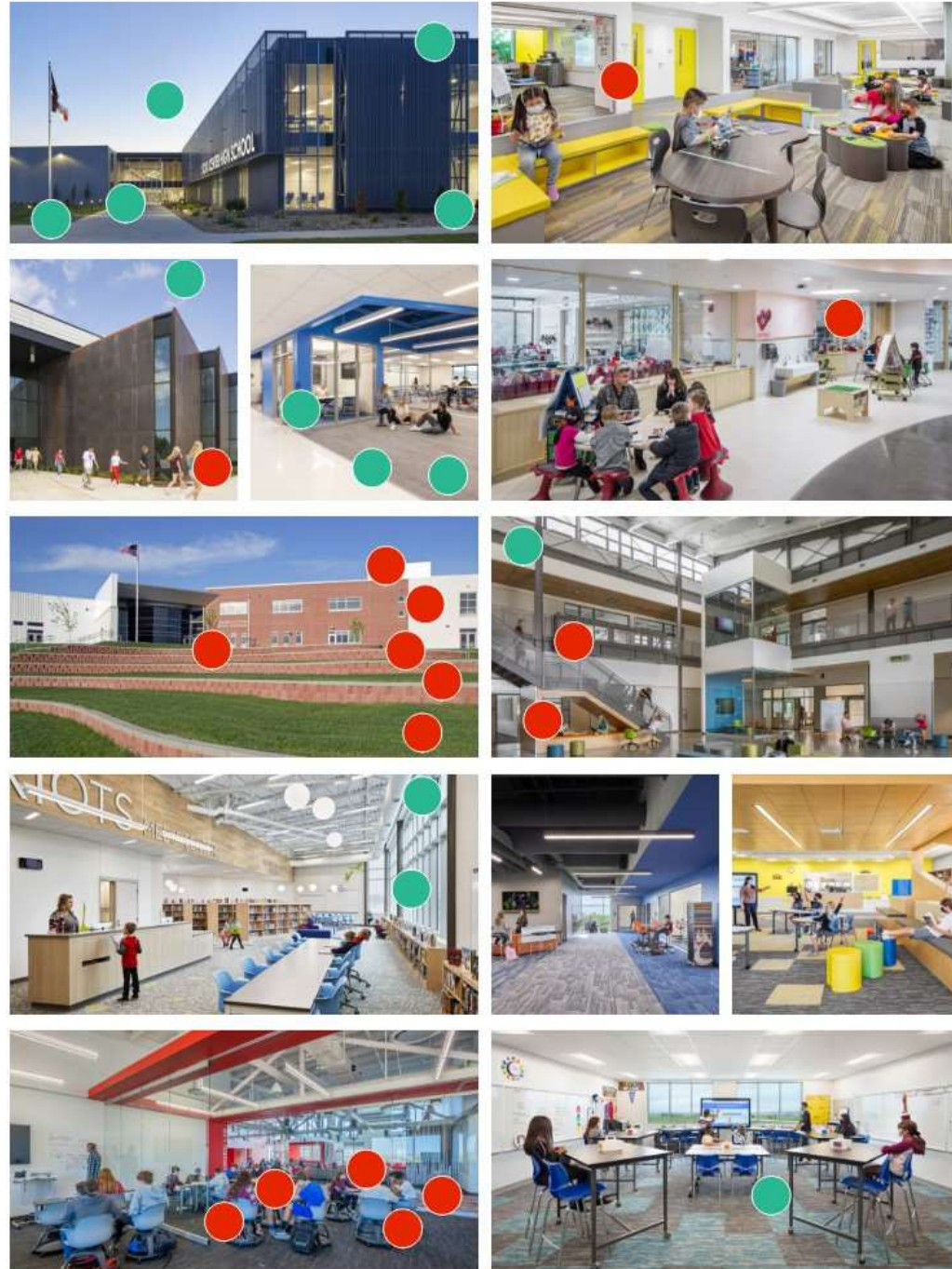
# VISUAL LISTENING



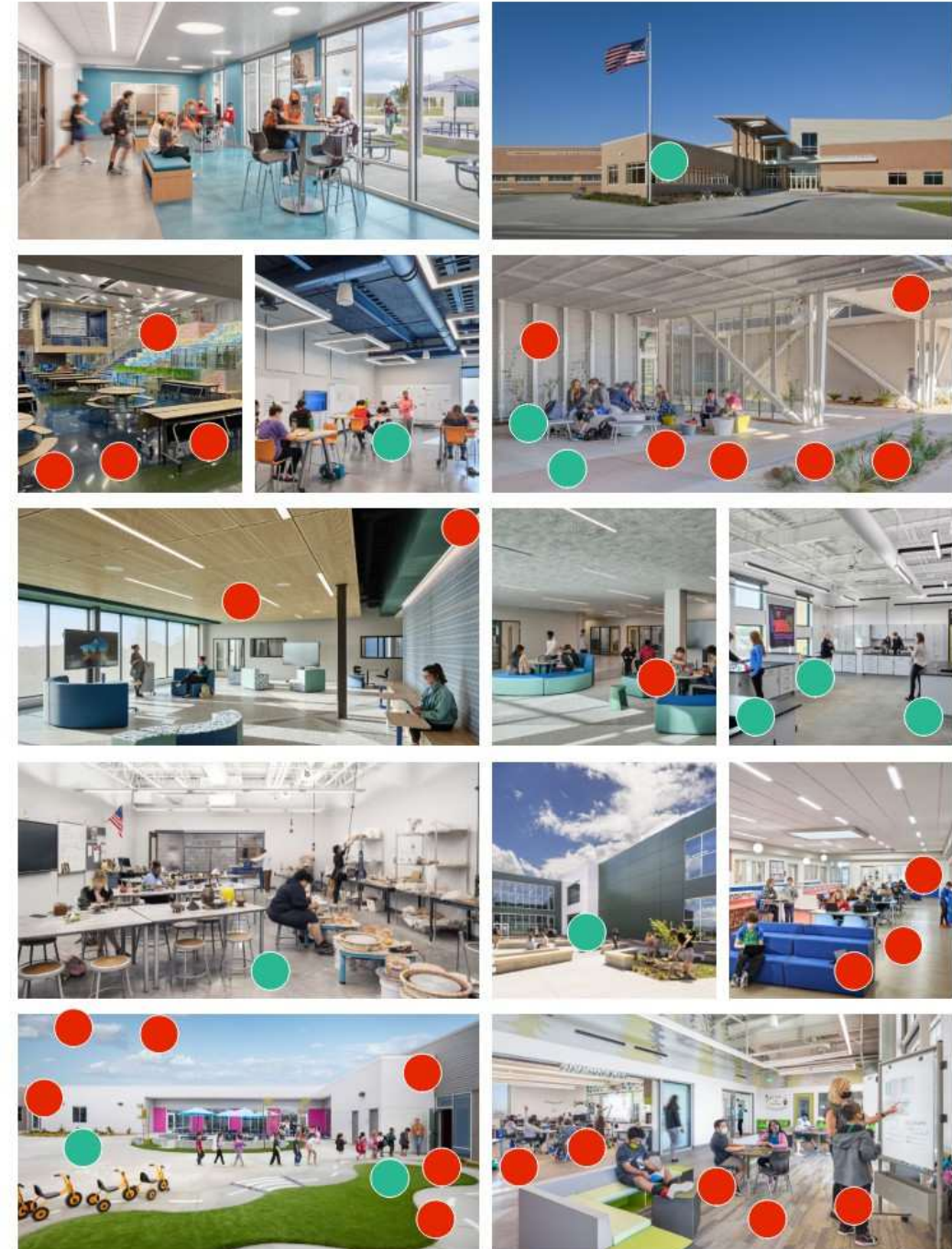
EDUCATIONAL VISUALIZATION

# Visioning Photo Exercise

● Likes ● Dislikes



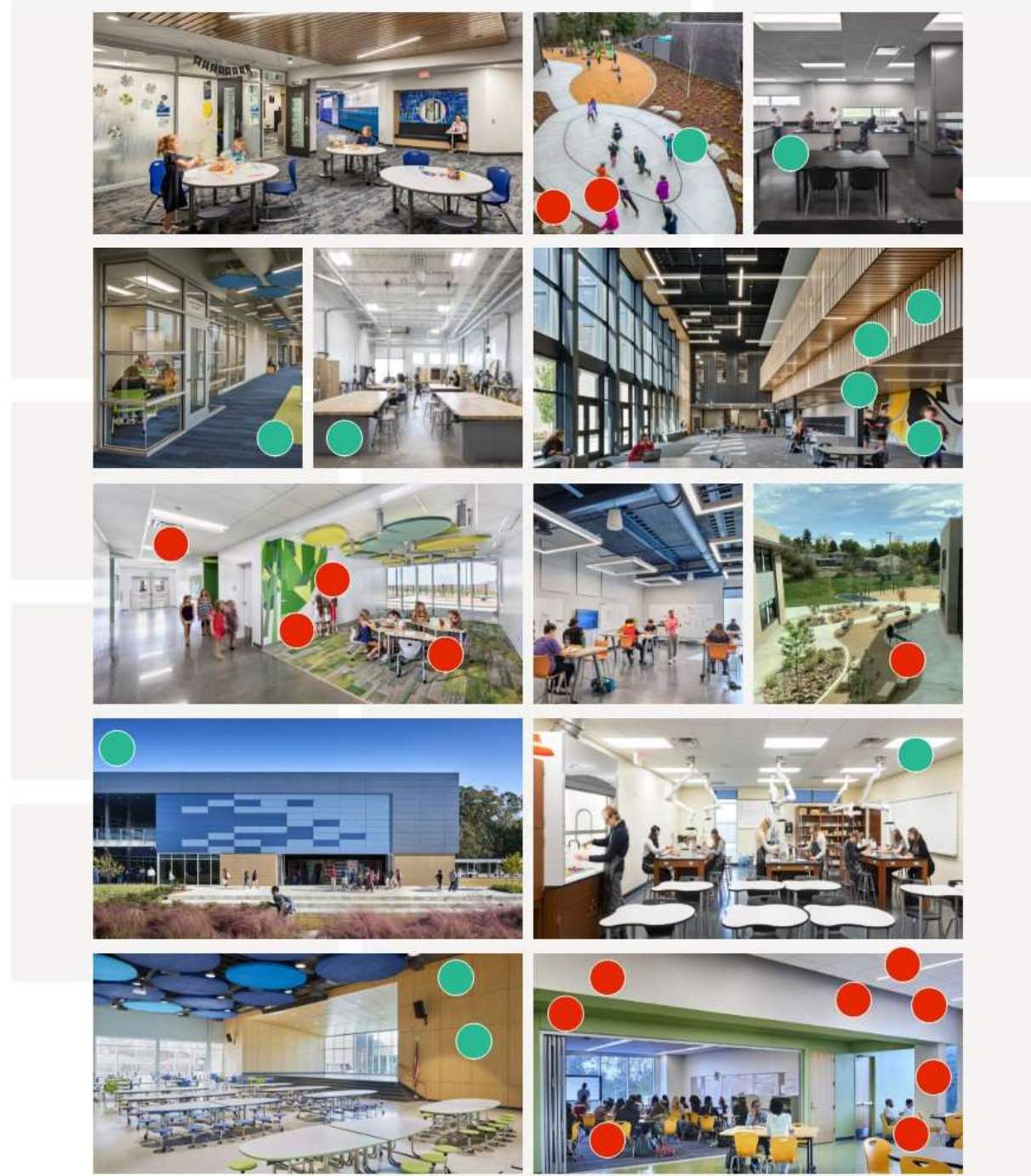
● Likes ● Dislikes



EDUCATIONAL VISUALIZATION

# Visioning Photo Exercise

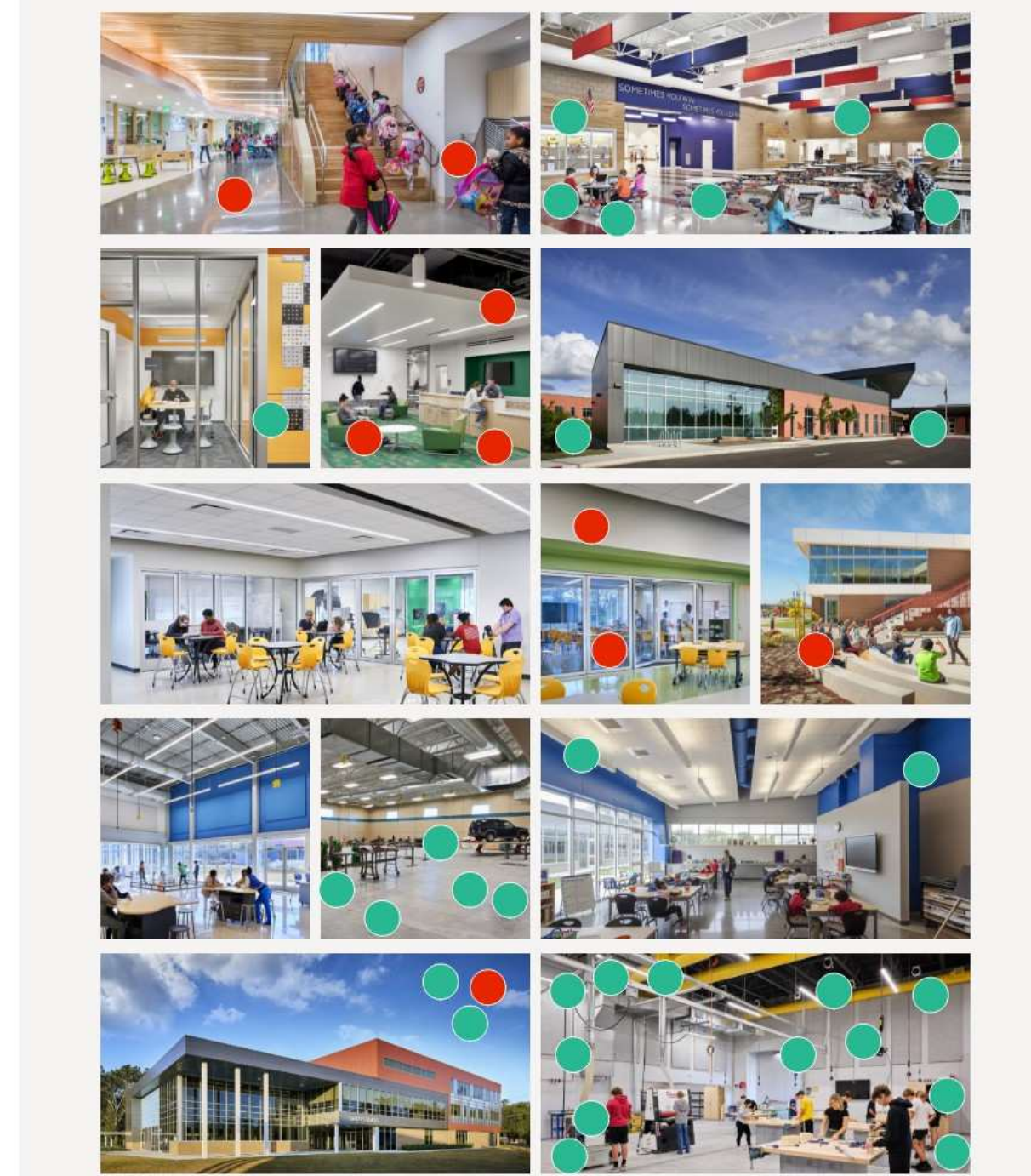
● Likes ● Dislikes



EDUCATIONAL VISUALIZATION

# Visioning Photo Exercise

● Likes ● Dislikes



# Design Your Dream School



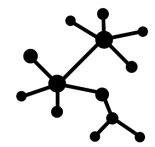
# DREAM SCHOOL



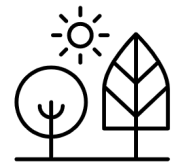
FRONT DOOR



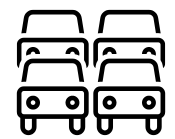
OUTDOOR LEARNING ENVIRONMENTS



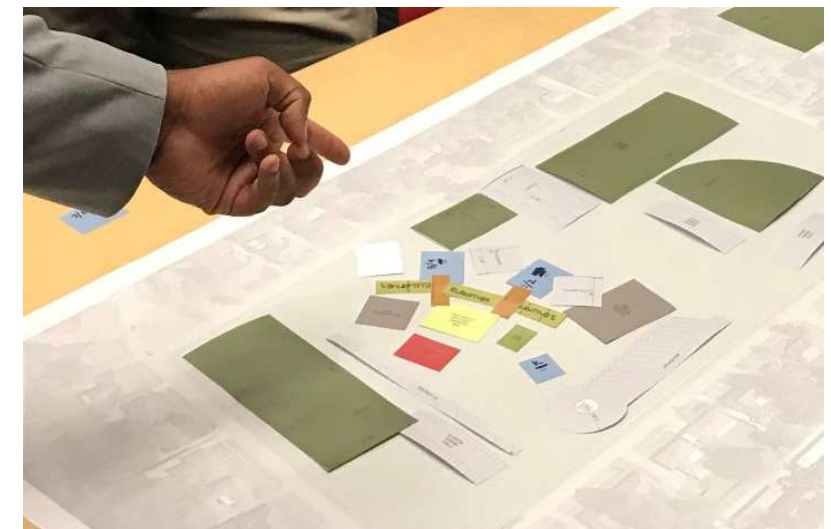
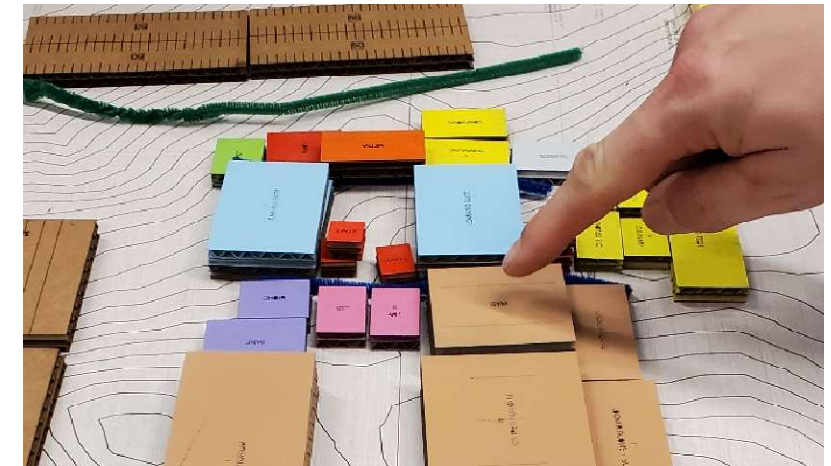
BUILDING ADJACENCIES



OUTDOOR PLAY / ACTIVITY



TRAFFIC FLOW – BUS, CAR, PEDESTRIAN



# DREAM SCHOOL



CRITICAL DESIGN ELEMENTS



SPECIFIC FACILITY NEEDS



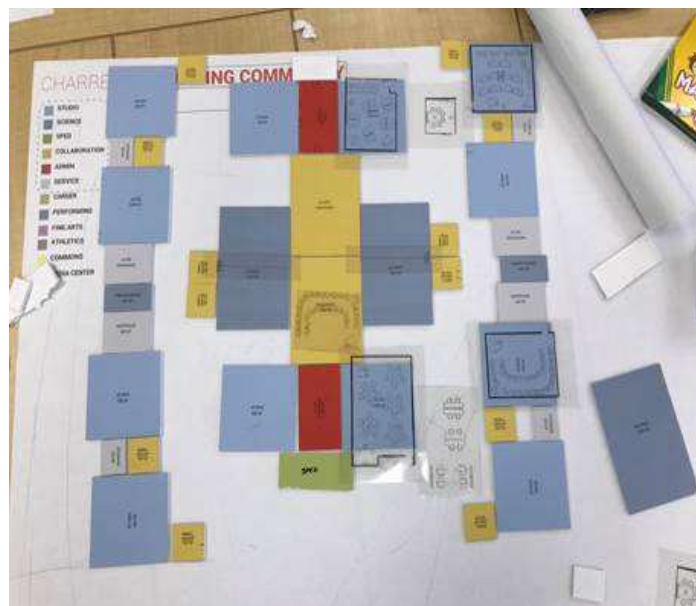
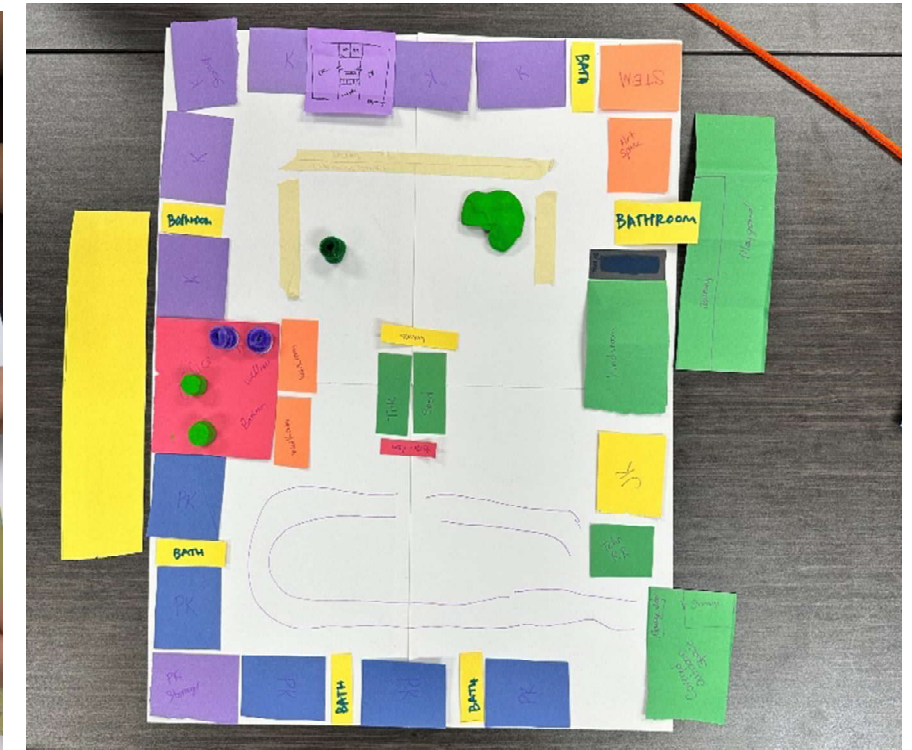
UNIQUE OPPORTUNITIES



STUDENT AND STAFF NEEDS



IMPORTANT ADJACENCIES



# Arlington Public Schools

## PK-12 School - Space Program Summary

|                               | EXISTING    |          |              | PROPOSED        |          |              | DEFICIENCY   | 2026 Scope     |
|-------------------------------|-------------|----------|--------------|-----------------|----------|--------------|--------------|----------------|
| DEPARTMENT / SPACE            | # of Spaces | ea Space | Total Net SF | # of Spaces     | ea Space | Total Net SF | Total Net SF | Total Gross SF |
| <b>LIFE SKILLS</b>            |             |          | <b>1240</b>  | <b>subtotal</b> |          | <b>2300</b>  | <b>1060</b>  | <b>3220</b>    |
| 15.01 Classroom               | 1           | 620      | 620          | 1               | 900      | 900          | 280          |                |
| 15.02 Foods lab               | 1           | 620      | 620          | 1               | 900      | 900          | 280          |                |
| 15.03 Pantry / Storage        |             |          | 0            | 1               | 100      | 100          | 100          |                |
| 15.04 Clothing / Textiles Lab |             |          | 0            | 0               | 0        | 0            | 0            |                |
| 15.05 Samples Storage         |             |          | 0            |                 | 0        | 0            | 0            |                |
| 15.06 Laundry / Utility       |             |          | 0            | 1               | 80       | 80           | 80           |                |
| 15.07 Child Development Lab   |             |          | 0            |                 |          | 0            | 0            |                |
| 15.08 Observation             |             |          | 0            |                 | 0        | 0            | 0            |                |
| 15.09 Storage                 |             |          | 0            | 1               | 100      | 100          | 100          |                |
| 15.10 Changing / Toilet       |             |          | 0            | 1               | 120      | 120          | 120          |                |
| 15.11 Office                  |             |          | 0            |                 |          | 0            | 0            |                |
| 15.12 Collaboration Space     |             |          | 0            | 1               | 100      | 100          | 100          |                |
| 15.13                         |             |          | 0            |                 | 0        | 0            | 0            |                |

Notes:

| PHYSICAL EDUCATION / ATHLETICS |                               | 38770 |       | subtotal |   | 44540 |       | 5770 |        | 6924 |  |
|--------------------------------|-------------------------------|-------|-------|----------|---|-------|-------|------|--------|------|--|
| 20.01                          | Lobby                         | 1     | 1500  | 1500     | 1 | 1500  | 1500  | 0    |        |      |  |
| 20.02                          | Public Restrooms              | 2     | 350   | 700      | 2 | 350   | 700   | 0    |        |      |  |
| 20.03                          | Concessions                   | 1     | 200   | 200      | 1 | 200   | 200   | 0    |        |      |  |
| 20.04                          | Gymnasium - Competition       | 1     | 10800 | 10800    | 1 | 10800 | 10800 | 0    |        |      |  |
|                                | .01 Elevated Track            |       |       | 0        |   |       | 0     | 0    |        |      |  |
|                                | .02 Gymnasium Storage         |       |       | 0        | 1 | 300   | 300   | 300  |        |      |  |
|                                | .03 Athletic Storage          |       |       | 0        | 1 | 300   | 300   | 300  |        |      |  |
| 20.04                          | Gymnasium - Competition       | 1     | 7600  | 7600     | 1 | 7600  | 7600  | 0    |        |      |  |
|                                | .01 Gymnasium Storage         | 2     | 200   | 400      | 2 | 200   | 400   | 0    |        |      |  |
|                                | .02 Athletic Storage          | 1     | 280   | 280      | 1 | 280   | 280   | 0    |        |      |  |
| 20.05                          | Gymnasium - Elementary        | 1     | 6900  | 6900     | 1 | 6900  | 6900  | 0    |        |      |  |
|                                | .01 Storage                   | 1     | 335   | 335      | 1 | 335   | 335   | 0    |        |      |  |
| 20.06                          | Weight Room                   | 1     | 3950  | 3950     | 1 | 3950  | 3950  | 0    |        |      |  |
|                                | .01 Weights Storage           |       |       | 0        | 0 | 0     | 0     | 0    |        |      |  |
| 20.07                          | Exercise / Fitness / Aerobics |       |       | 0        | 0 | 0     | 0     | 0    |        |      |  |
|                                | .01 Exercise Storage          |       |       | 0        | 0 | 0     | 0     | 0    |        |      |  |
| 20.08                          | Wrestling Room                | 0     | 0     | 0        | 1 | 4000  | 4000  | 4000 | 3 mats |      |  |
|                                | .01 Wrestling Storage         | 0     | 0     | 0        | 1 | 100   | 100   | 100  |        |      |  |
| 20.09                          | Classroom / Team Meeting Room | 0     | 0     | 0        | 1 | 800   | 800   | 800  |        |      |  |
| 20.10                          | Training Room                 | 1     | 280   | 280      | 1 | 280   | 280   | 0    |        |      |  |
|                                | .01 Training Storage          |       |       | 0        | 1 | 100   | 100   | 100  |        |      |  |
| 20.11                          | Laundry                       |       |       | 0        |   | 0     | 0     | 0    |        |      |  |
| 20.12                          | MS Locker Room                | 2     | 950   | 1900     | 2 | 950   | 1900  | 0    |        |      |  |
|                                | .01 Showers / Drying          | 8     | 10    | 80       | 8 | 10    | 80    | 0    |        |      |  |
|                                | .02 Toilet                    | 2     | 60    | 120      | 2 | 60    | 120   | 0    |        |      |  |
| 20.13                          | HS Locker Room                | 2     | 720   | 1440     | 2 | 720   | 1440  | 0    |        |      |  |
|                                | .01 Showers / Drying          | 9     | 10    | 90       | 9 | 10    | 90    | 0    |        |      |  |
|                                | .02 Toilet                    | 2     | 100   | 200      | 2 | 100   | 200   | 0    |        |      |  |
| 20.13                          | Athletic Locker Room          | 2     | 500   | 1000     | 2 | 500   | 1000  | 0    |        |      |  |
|                                | .01 Showers / Drying          | 2     | 120   | 240      | 2 | 120   | 240   | 0    |        |      |  |
|                                | .02 Toilet                    | 2     | 50    | 100      | 2 | 50    | 100   | 0    |        |      |  |
| 20.14                          | Official's Locker Room        | 2     | 65    | 130      | 2 | 65    | 130   | 0    |        |      |  |
|                                | .01 Showers / Drying          | 2     | 25    | 50       | 2 | 25    | 50    | 0    |        |      |  |
|                                | .02 Toilet                    |       |       | 0        | 0 | 0     | 0     | 0    |        |      |  |
| 20.15                          | Staff Locker Room             |       |       | 0        |   | 0     | 0     | 0    |        |      |  |
|                                | .01 Showers / Drying          |       |       | 0        |   | 0     | 0     | 0    |        |      |  |
|                                | .02 Toilet                    |       |       | 0        |   | 0     | 0     | 0    |        |      |  |
| 20.16                          | Phys. Ed. Office              | 3     | 65    | 195      | 3 | 65    | 195   | 0    |        |      |  |
| 20.17                          | Athletic Office               | 2     | 100   | 200      | 2 | 100   | 200   | 0    |        |      |  |
| 20.18                          | Storage                       | 1     | 80    | 80       | 1 | 250   | 250   | 170  |        |      |  |

Notes:

|                                | EXISTING    |          |              | PROPOSED        |          |              | DEFICIENCY   | 2026 Scope     |
|--------------------------------|-------------|----------|--------------|-----------------|----------|--------------|--------------|----------------|
| DEPARTMENT / SPACE             | # of Spaces | ea Space | Total Net SF | # of Spaces     | ea Space | Total Net SF | Total Net SF | Total Gross SF |
| <b>AUDITORIUM</b>              |             |          | <b>500</b>   | <b>subtotal</b> |          | <b>13510</b> | <b>13010</b> | <b>18914</b>   |
| 3.01 Lobby                     |             |          | 0            | 1               | 2000     | 2000         | 2000         |                |
| 3.02 Ticket Booth              |             |          | 0            | 1               | 120      | 120          | 120          |                |
| 3.03 Concessions               |             |          | 0            | 1               | 150      | 150          | 150          |                |
| 3.04 Seating Area - Main House |             |          | 0            | 1               | 6600     | 6600         | 6600         |                |
| 3.05 Black Box / Forum Seating |             |          | 0            |                 | 0        | 0            | 0            |                |
| 3.06 Stage                     | 1           | 500      | 500          | 1               | 2800     | 2800         | 2300         |                |
| 3.07 Orchestra Pit             |             |          | 0            | 0               | 375      | 0            | 0            |                |
| 3.08 Lighting Control          |             |          | 0            | 1               | 150      | 150          | 150          |                |
| 3.09 Sound Control             |             |          | 0            | 1               | 150      | 150          | 150          |                |
| 3.10 Dressing Room / Toilet    |             |          |              |                 |          |              | 0            |                |
| .01 Men                        |             |          | 0            | 1               | 125      | 125          | 125          |                |
| .02 Women                      |             |          | 0            | 1               | 125      | 125          | 125          |                |
| 3.11 Makeup                    |             |          | 0            | 1               | 240      | 240          | 240          |                |
| 3.12 Green Room                |             |          | 0            |                 | 0        | 0            | 0            |                |
| 3.13 Scene / Stage Shop        |             |          | 0            | 1               | 500      | 500          | 500          |                |
| 3.14 Shop Storage              |             |          | 0            | 1               | 50       | 50           | 50           |                |
| 3.15 Stage Storage             |             |          | 0            | 1               | 150      | 150          | 150          |                |
| 3.16 Prop Storage              |             |          | 0            | 1               | 150      | 150          | 150          |                |
| 3.17 Costume Storage           |             |          | 0            | 1               | 100      | 100          | 100          |                |
| 3.18 Flat Storage              |             |          | 0            | 1               | 100      | 100          | 100          |                |
| 3.19                           |             |          | 0            |                 | 0        | 0            | 0            |                |

Notes:

| DEPARTMENT / SPACE                | # of Spaces | ea Space | Total Net SF | # of Spaces     | ea Space | Total Net SF | Total Net SF | Total Gross SF |
|-----------------------------------|-------------|----------|--------------|-----------------|----------|--------------|--------------|----------------|
| <b>STUDENT SERVICES / SUPPORT</b> |             |          | <b>1395</b>  | <b>subtotal</b> |          | <b>4375</b>  | <b>2980</b>  |                |
| 24.01 Lockers                     | 0           | 0        | 0            | 0               | 0        | 0            | 0            |                |
| 24.02 Social Commons              | 1           | 500      | 500          | 2               | 500      | 1000         | 500          |                |
| 24.03 Learning Commons            |             |          | 0            | 3               | 800      | 2400         | 2400         |                |
| 24.04 School Bank / Flex Room     | 1           | 725      | 725          | 1               | 725      | 725          | 0            |                |
| 24.05 Storage                     | 1           | 170      | 170          | 1               | 250      | 250          | 80           |                |

Notes:

|                               | EXISTING    |          |              | PROPOSED    |          |              | DEFICIENCY   | 2026 Scope     |
|-------------------------------|-------------|----------|--------------|-------------|----------|--------------|--------------|----------------|
| DEPARTMENT / SPACE            | # of Spaces | ea Space | Total Net SF | # of Spaces | ea Space | Total Net SF | Total Net SF | Total Gross SF |
| TECHNOLOGY / INDUSTRIAL       |             |          | 5278         |             |          | 9906         | 4628         | 13868          |
| TECHNOLOGY / VOCATIONAL ARTS  |             |          |              | subtotal    |          |              |              |                |
| 25.01 Classroom               | 1           | 670      | 670          | 1           | 670      | 670          | 0            |                |
| 25.02 Wood Lab                | 1           | 1200     | 1200         | 1           | 1200     | 1200         | 0            |                |
| 25.03 Construction Lab        |             |          | 0            | 1           | 2000     | 2000         | 2000         |                |
| 25.04 Metals Lab              | 1           | 2200     | 2200         | 1           | 2200     | 2200         | 0            |                |
| 25.05 Manufacturing Lab       |             |          | 0            | 1           | 1000     | 1000         | 1000         |                |
| 25.06 Auto Mechanics Lab      |             |          | 0            | 1           | 480      | 480          | 480          |                |
| 25.07 Auto Body Lab           |             |          | 0            |             | 0        | 0            | 0            |                |
| 25.08 Agriculture Classroom   | 1           | 840      | 840          | 1           | 840      | 840          | 0            |                |
| 25.09 Technology/Robotics Lab |             |          | 0            | 0           | 0        | 0            | 0            |                |
| 25.10 Finishing Room          |             |          | 0            | 1           | 180      | 180          | 180          |                |
| 25.11 Materials Storage       | 1           | 168      | 168          | 2           | 168      | 336          | 168          |                |
| 25.12 Project Storage         | 1           | 200      | 200          | 2           | 200      | 400          | 200          |                |
| 25.13 Tool Storage            |             |          | 0            | 2           | 200      | 400          | 400          |                |
| 25.14 Locker/Changing         |             |          | 0            | 2           | 100      | 200          | 200          |                |
| 25.15 Office                  |             |          | 0            | 0           | 0        | 0            | 0            |                |
| 25.16 Showroom                |             |          | 0            | 0           | 0        | 0            | 0            |                |
| 25.17                         |             |          | 0            |             | 0        | 0            | 0            |                |

Notes:

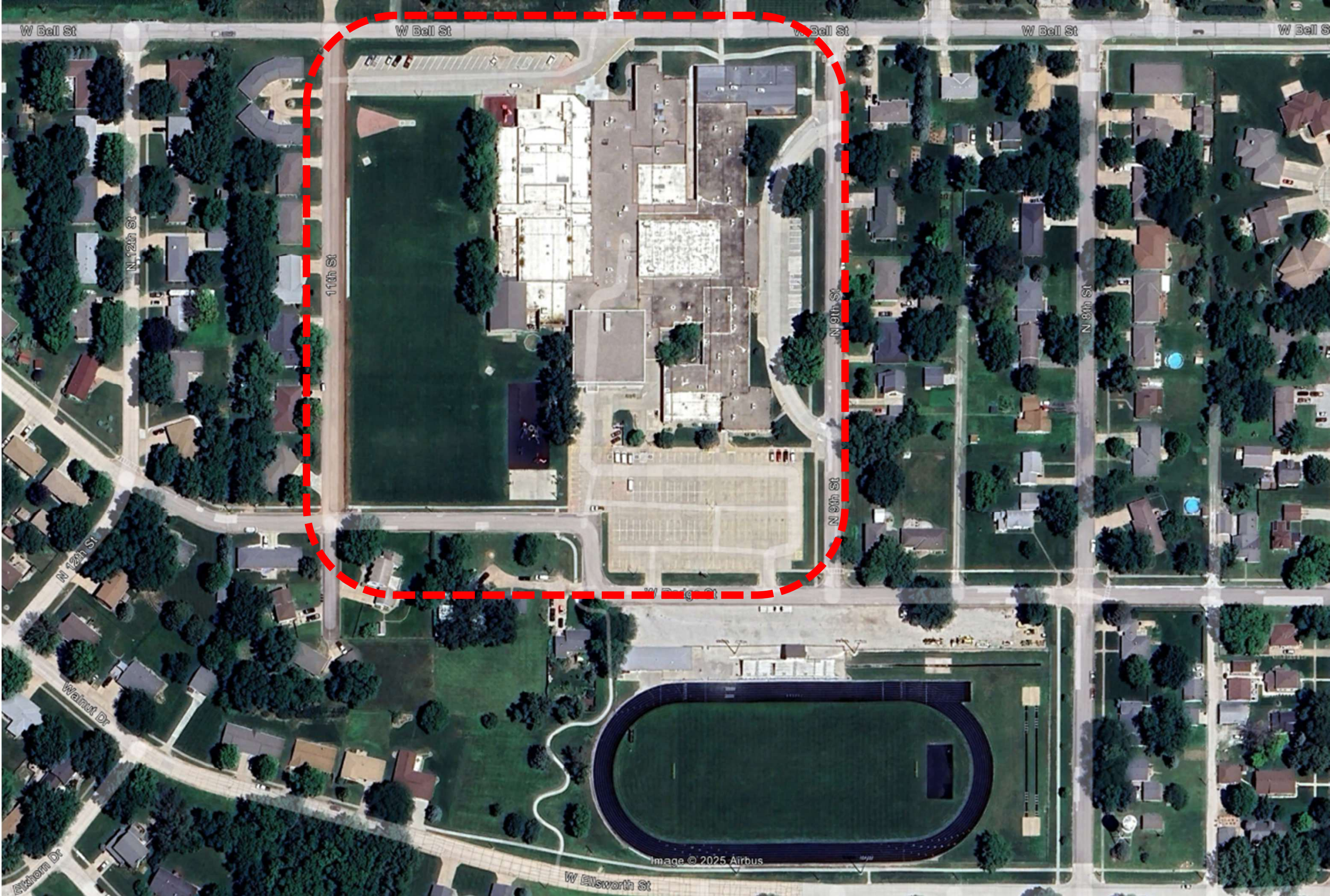
**TOTAL NET ASSIGNABLE AREA**

**BUILDING INFRASTRUCTURE**

**TOTAL BUILDING AREA**

**42933**

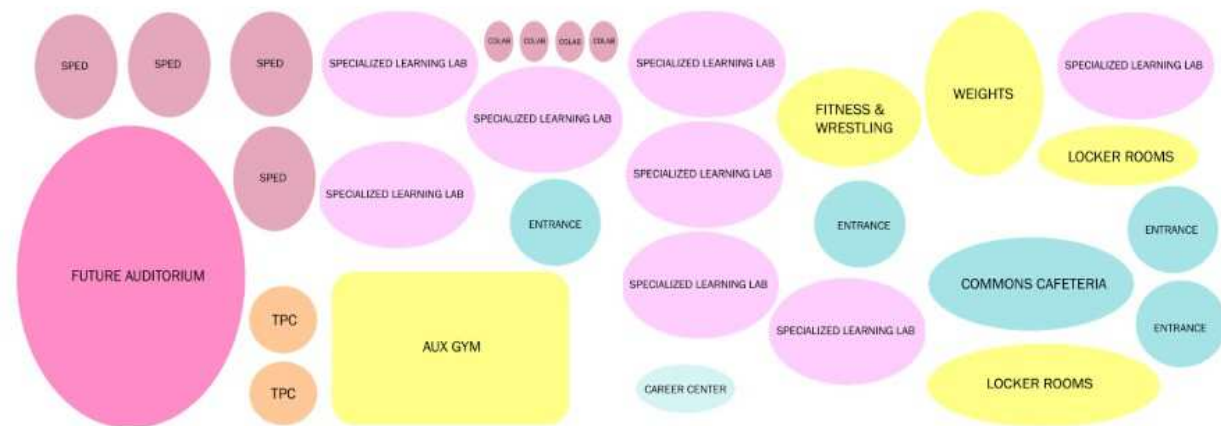
This Number includes a grossing factor for each new space



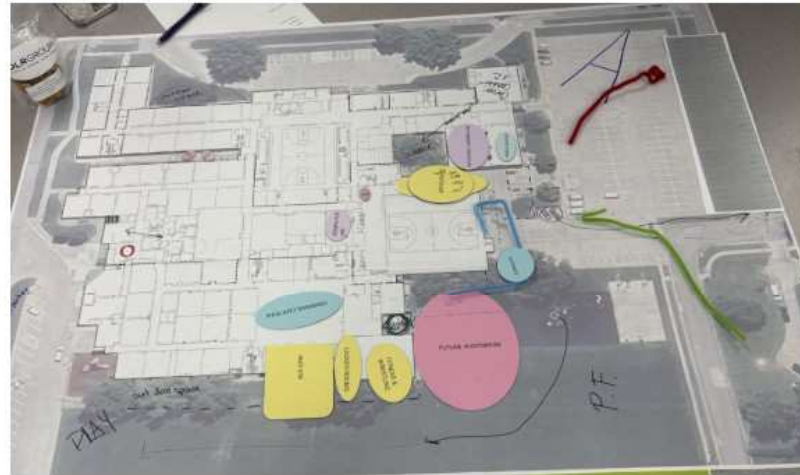
**MACRO ORGANIZATION**

# Design Your Dream School

The Arlington team was supplied with the site plan as well as manipulatives labeled with all the items on the priority list. They were instructed to utilize these pieces and put them on the site where they thought they should be and to make sure to include adjacencies as well as any notes. At the conclusion each group presented to the entire committee and addressed any questions. Each committee member was asked to identify items they liked and did not with each plan and to pick their 2 favorite options

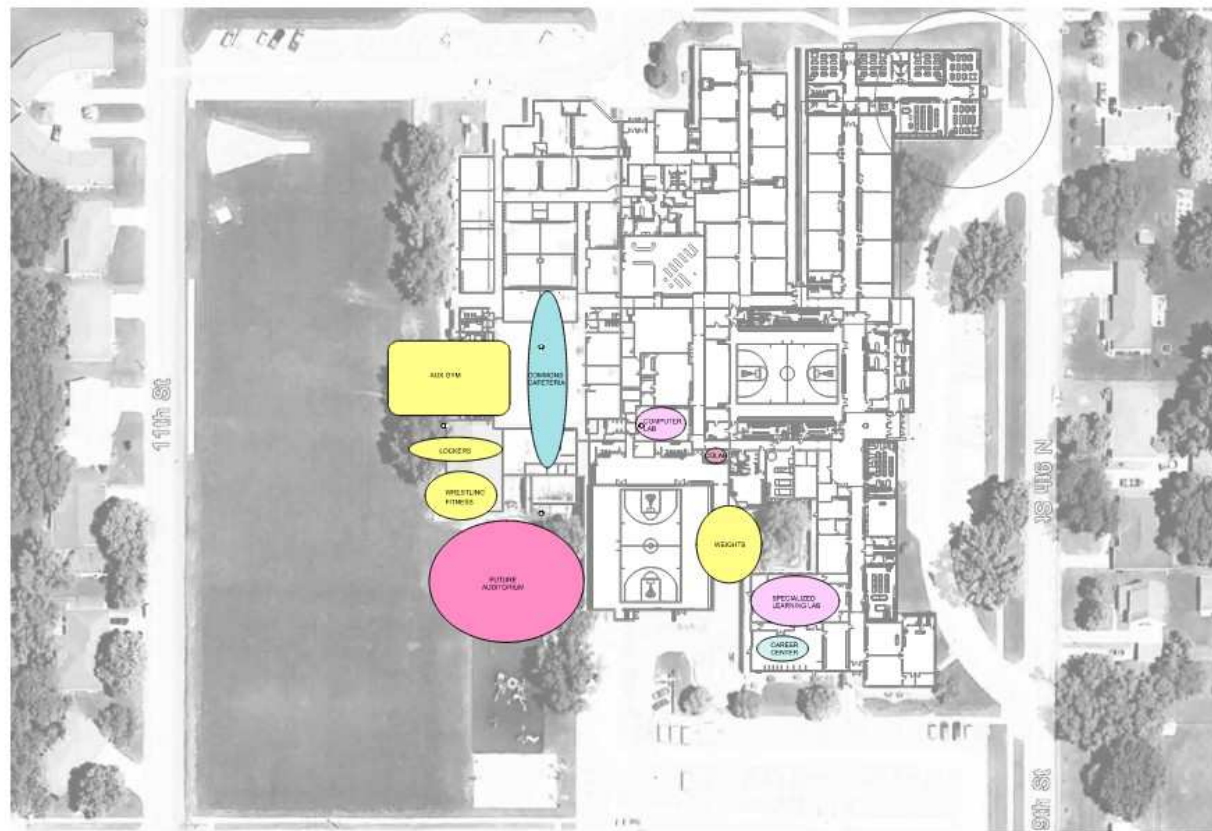


**MACRO ORGANIZATION**



**Option A Synthesis**

- Option A received positive feedback related to traffic flow, athletics, and CTE improvements, but generated significant concern around moving science rooms.

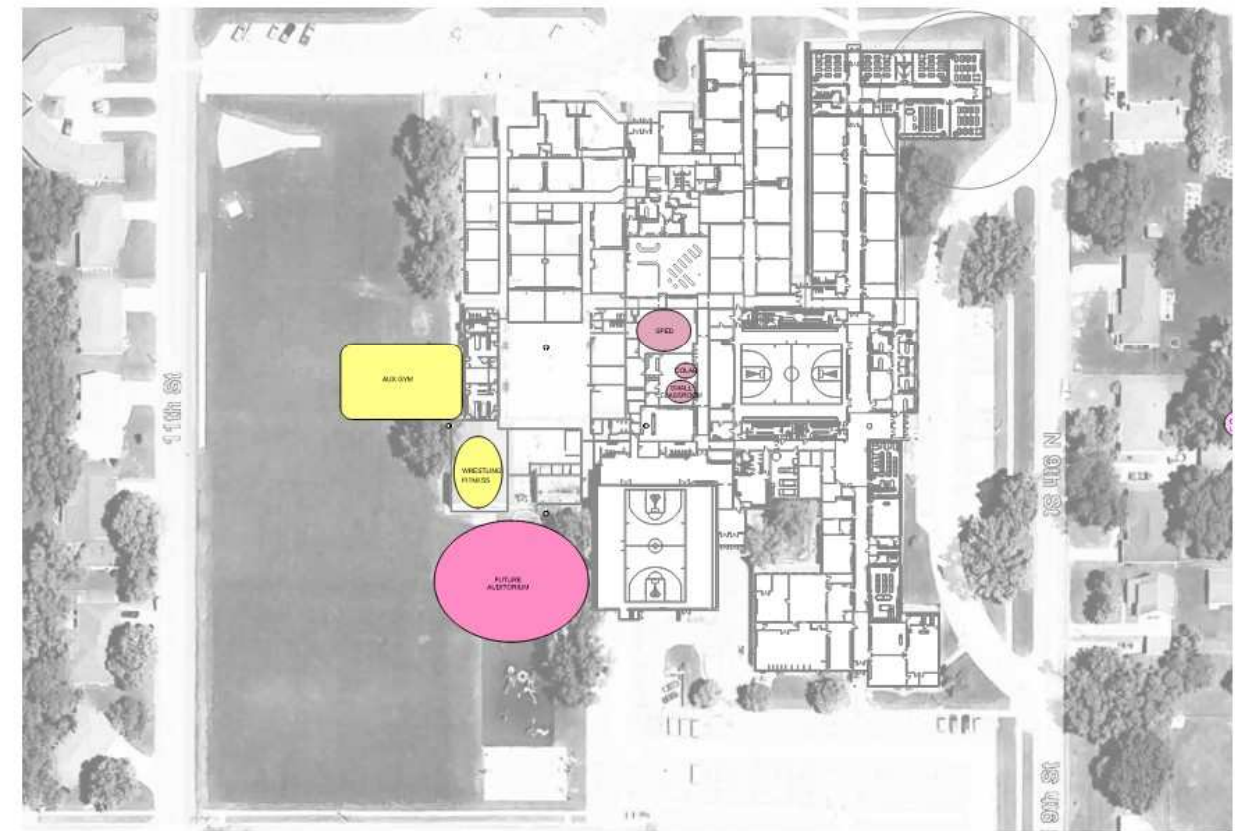


**MACRO ORGANIZATION**

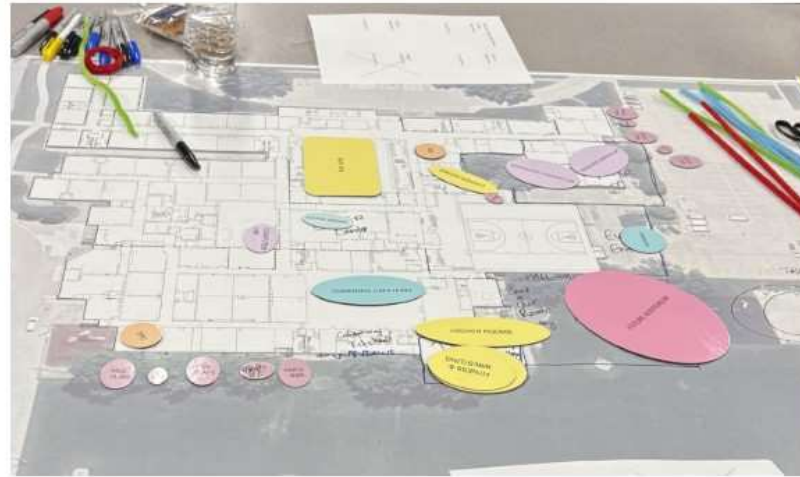


**Option B Synthesis**

- Option B emerged as the strongest choice, primarily due to its improved auditorium placement, expanded parking, and effective reuse of space.



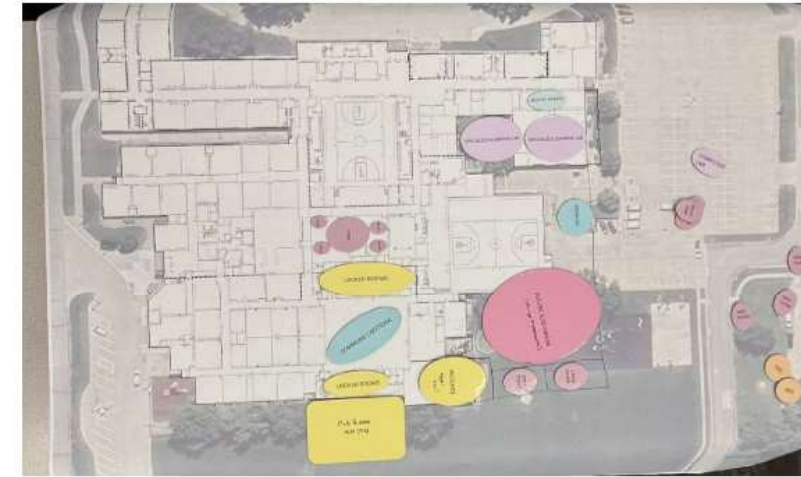
**MACRO ORGANIZATION**

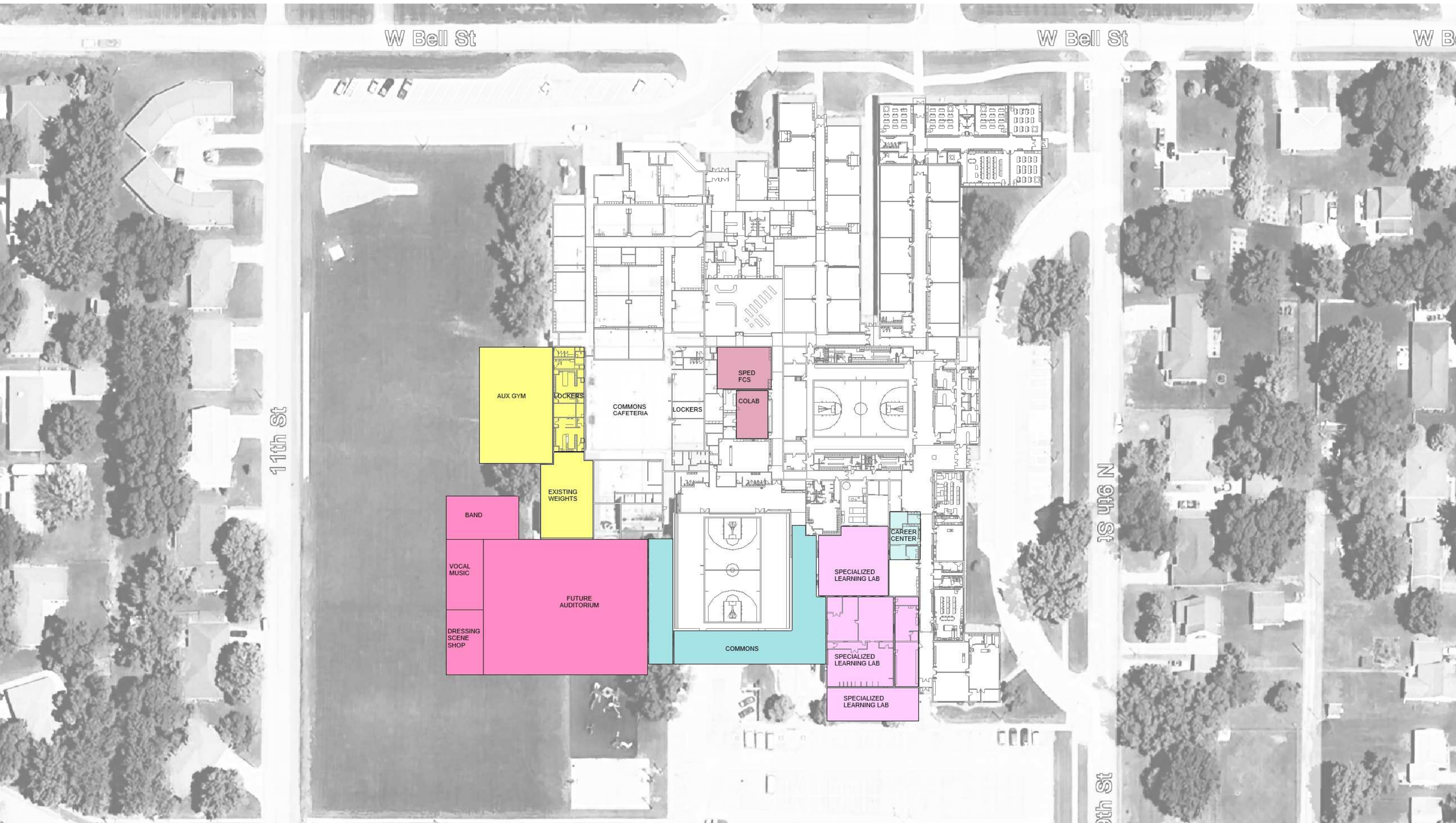


**Option C Synthesis**

- Option C, while praised for its elementary classroom expansion, fitness space improvements, and Blue Gym repurposing, was consistently criticized for providing no additional parking and introducing several undesirable academic space shifts.

**MACRO ORGANIZATION**





W Bell St

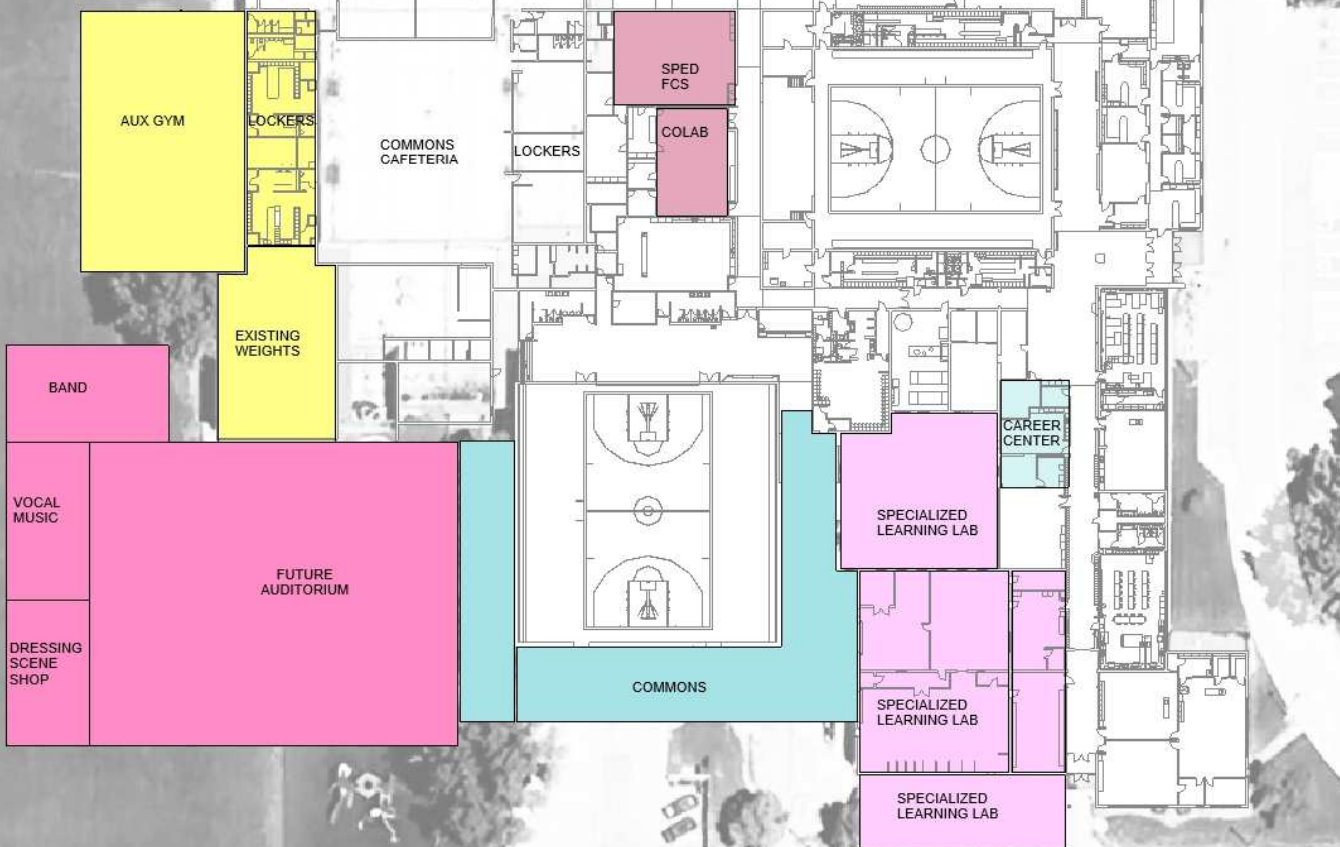
W Bell St

W B

11th St

N 9th St

11th St





AUX GYM

SPED  
FCS  
COLLAB

CAREER  
CENTER

FUTURE AUDITORIUM

COMMONS

SPECIALIZED  
LEARNING LABS

BAND

VOCAL  
MUSIC

DRESSING/  
SCENE  
SHOP

W Bell St

N 9th St

W Dodge St

15th St

## Project A

Expanded Academic pathways (New Addition 5800 SF)

New Construction Lab

New Manufacturing Lab

Finishing Room

Tool Storage

Locker Room/Changing Rooms

Reno 6700 SF existing space including classroom and industrial tech

Flexible Learning and Colab space (3000 SF renovation)

Activities Entry & Expanded Commons (5500 SF new Addition)

**Total Renovation and New Additions = 21,000 SF**

**Total project cost = \$9,528,888 (construction cost \$7,025,000)**

## Project B

Parking and Site Circulation TBD

Expanded athletic space (New Addition 6925 SF)

Wrestling room (3 mats)

Classroom/Team meeting room

Training Room

Storage

Locker Rooms (renovations)

Previous Cost of Locker Alt 2021 \$825,000 (\$1,600,000 today)

Total Renovations and New Additions = 14,925 S.F.

Total Project Cost = \$5,741,539 (construction cost \$4,282,600)

### Alternates:

Alternate pricing will be added or deducted to the total GMP price if accepted.

- CC-1 – ADD \$105,000
  - Remove and replace existing corridor lockers with new lockers and install corridor lockers in the addition corridors.
  - **ACCEPT or REJECT**
- CC-2 – ADD \$280,000
  - Complete renovation of the blue gym locker rooms/restroom as designed.
  - **ACCEPT or REJECT**
- CC-3 – ADD \$210,000
  - Complete renovation of existing area B north locker room as designed.
  - **ACCEPT or REJECT**
- CC-4 – ADD \$230,000
  - Complete Renovation of existing area B south locker room as designed.
  - **ACCEPT or REJECT**

## Project C

Fine and Performing Arts expansion New Addition (25,500 SF)

Lobby/Pre-Function

600 Seat House

40' Deep Stage

Dressing Rooms

Scene Shop

Storage

Band/music relocation

Special Ed and Resource (renovations) moved to band rooms 5000 SF

**Total Renovations and New Additions = 14,925 S.F.**

**Total Project Cost = \$20,170,592 (construction cost \$15,586,000)**



11th St

N 9th St

N 9th St

AUX GYM

LOCKERS

EXISTING WEIGHTS

COMMONS CAFETERIA

LOCKERS

SPECIALIZED LEARNING LAB

COMMONS

BAND

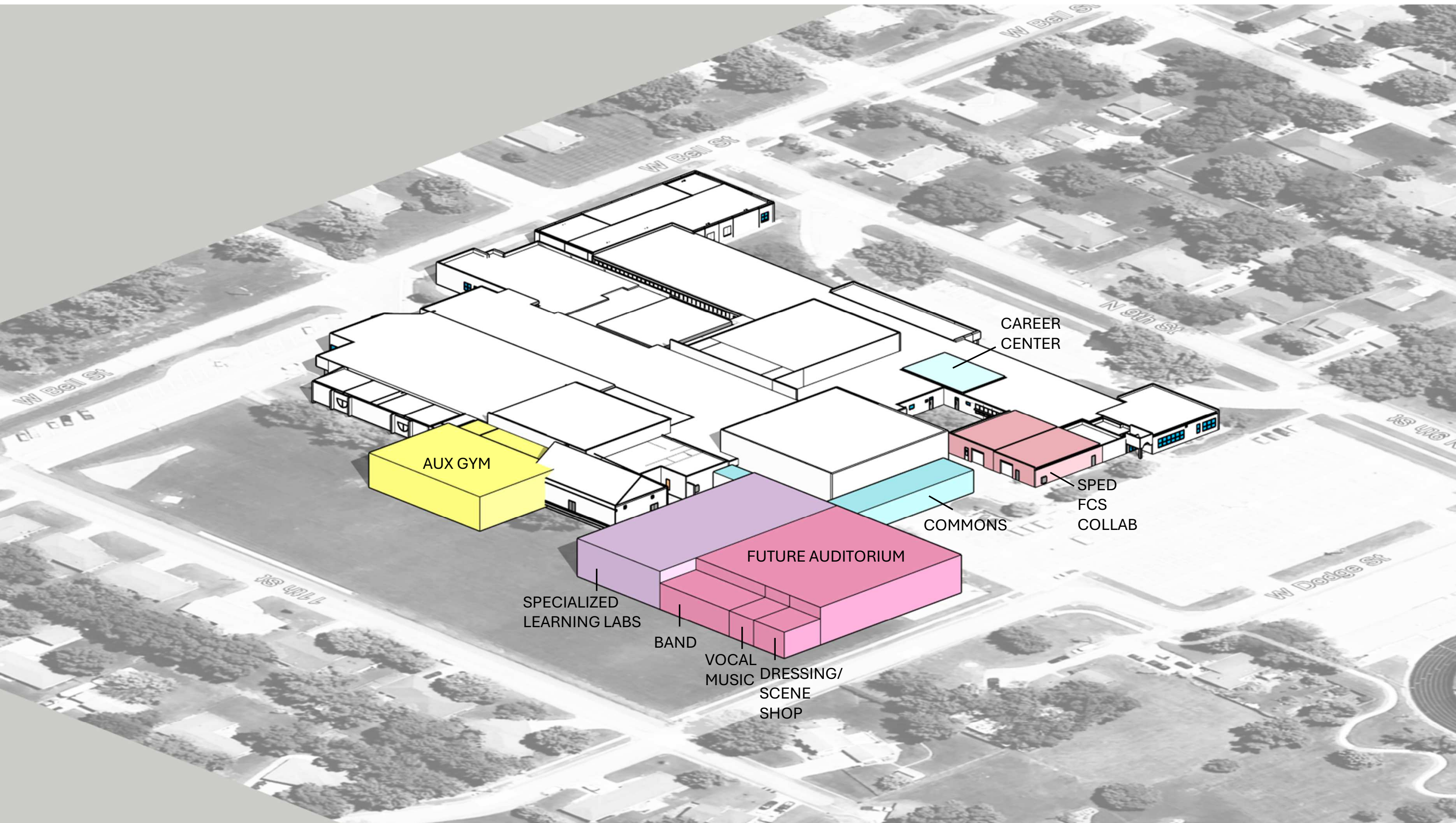
VOCAL MUSIC

DRESSING SCENE SHOP

FUTURE AUDITORIUM

SPED FCS COLAB

CAREER CENTER



AUX GYM

CAREER CENTER

SPED FCS COLLAB

COMMONS

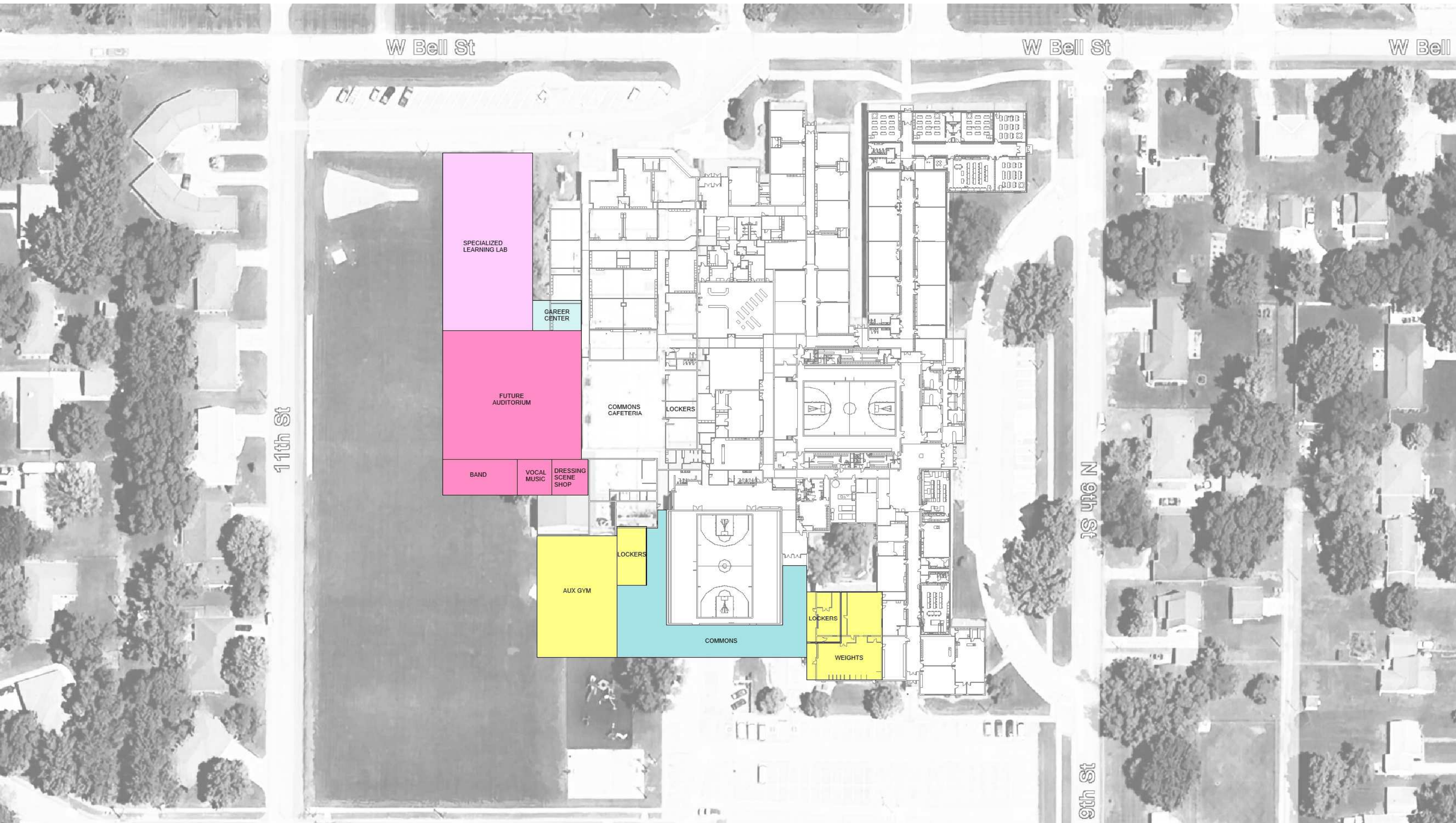
FUTURE AUDITORIUM

SPECIALIZED LEARNING LABS

BAND

VOCAL MUSIC

DRESSING/ SCENE SHOP



W Bell St

W Bell St

W Bell

11th St

SPECIALIZED LEARNING LAB

CAREER CENTER

FUTURE AUDITORIUM

COMMONS CAFETERIA

LOCKERS

BAND

VOCAL MUSIC

DRESSING SCENE SHOP

LOCKERS

AUX GYM

COMMONS

LOCKERS

WEIGHTS

N 9th St

9th St



SPECIALIZED  
LEARNING LABS

CAREER  
CENTER

FUTURE AUDITORIUM

AUX GYM

COMMONS

WEIGHTS

W Bel St

W Bel St

W Bel St

N 9th St

185 4th St

185 4th St

W Dodge St

# Community Open House Discussion January 28th

